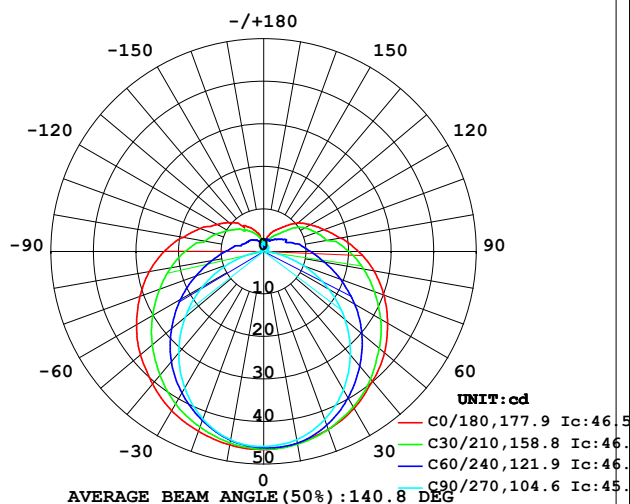


LUMINAIRE PHOTOMETRIC TEST REPORT

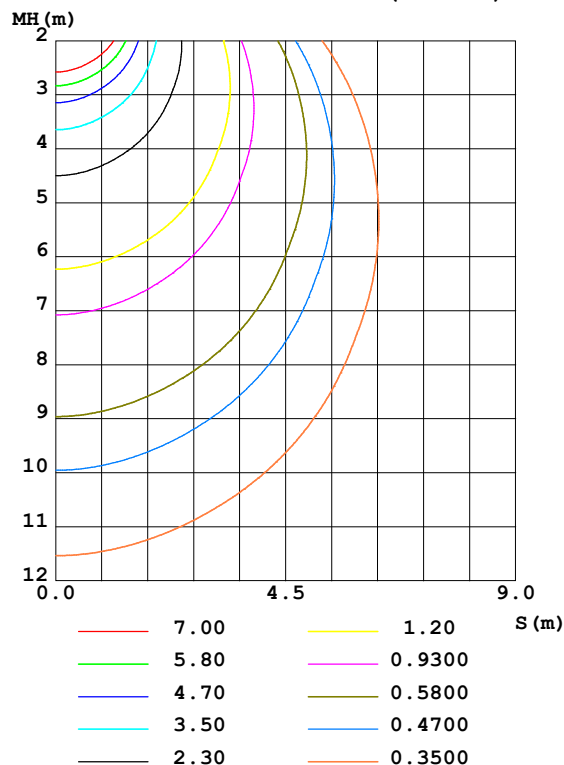
Test:U:24.00V I:0.4201A P:10.08W PF:1.000 Freq:50.00Hz Lamp Flux:221.153x1 lm		
NAME: SF21-24V-2835-72-CC-2700-80	TYPE: 硅胶	WEIGHT:
SPEC.:	DIM.: 28mm*11.5mm	SERIAL No.:2021120703
MFR.: OLYMPIA	SUR.:1*0.016	Shielding Angle:

DATA OF LAMP		PHOTOMETRIC DATA Eff: 21.93 lm/W			
MODEL	2835	I _{max} (cd)	46.56	S/MH(C0/180)	1.40
NOMINAL POWER(W)	10	LOR(%)	100.0	S/MH(C90/270)	1.21
RATED VOLTAGE(V)	24	TOTAL FLUX(lm)	221.15	η UP,DN(C0-180)	10.2,38.6
NOMINAL FLUX(lm)	221.153	CIE CLASS	SEMI-D.	η UP,DN(C180-360)	11.3,39.9
LAMPS INSIDE	1	η up(%)	21.5	CIBSE SHR NOM	1.50
TEST VOLTAGE(V)	24	η down(%)	78.5	CIBSE SHR MAX	1.55

LUMINOUS INTENSITY DISTRIBUTION DIAGRAM



C0 PLANE ISOLUX DIAGRAM (UNIT:lx)



C Range: 0 - 360DEG
C Interval: 30.0DEG
Test Speed: HIGH
Temperature:25.3DEG
Operators:LPC
Test Date:2021-12-07

γ Range: 0 - 180DEG
γ Interval: 1.0DEG
Test System:EVERFINE GO-2000B_V1 SYSTEM V2.0.362
Humidity:65.0%
Test Distance:9.200m [K=1.0000]
Remarks:

ZONAL FLUX DIAGRAM

ZONAL FLUX DIAGRAM:

γ	C0	C45	C90	C135	C180	C225	C270	C315	γ	Φ zone	Φ total	%lum, lamp
10	45.82	45.89	44.96	44.36	46.19	45.41	44.95	45.71	0- 10	4.365	4.365	1.97,1.97
20	44.48	43.98	42.02	41.92	44.93	43.09	41.87	44.14	10- 20	12.57	16.93	7.66,7.66
30	42.57	40.95	37.52	38.41	43.25	39.93	37.11	41.35	20- 30	19.30	36.23	16.4,16.4
40	39.81	37.13	31.70	34.17	40.64	35.87	31.10	38.01	30- 40	23.94	60.17	27.2,27.2
50	37.09	32.81	24.99	29.49	37.81	31.26	24.14	34.01	40- 50	26.21	86.38	39.1,39.1
60	33.64	28.21	17.66	24.61	34.55	26.38	16.62	29.62	50- 60	26.11	112.5	50.9,50.9
70	30.07	23.50	10.10	19.88	30.97	21.54	8.997	25.05	60- 70	23.95	136.4	61.7,61.7
80	26.31	19.18	3.287	15.75	27.27	17.27	2.537	20.78	70- 80	20.43	156.9	70.9,70.9
90	22.30	15.54	0.6533	12.34	23.43	13.72	0.4784	17.14	80- 90	16.66	173.5	78.5,78.5
100	18.24	11.91	0.7391	9.421	19.20	10.54	0.5325	13.43	90-100	13.50	187.0	84.6,84.6
110	15.13	9.701	0.8142	7.688	15.88	8.597	0.6063	11.13	100-110	10.35	197.4	89.3,89.3
120	12.65	8.503	1.005	6.274	12.72	7.180	0.7034	9.374	110-120	8.072	205.5	92.9,92.9
130	10.42	6.421	1.237	5.325	10.62	6.144	0.8744	8.054	120-130	6.166	211.6	95.7,95.7
140	7.738	4.586	1.448	4.304	7.772	5.101	1.035	5.650	130-140	4.282	215.9	97.6,97.6
150	5.841	3.450	1.664	3.292	6.542	4.136	1.326	4.428	140-150	2.707	218.6	98.8,98.8
160	4.350	2.923	1.738	2.174	4.838	3.081	1.668	3.631	150-160	1.599	220.2	99.6,99.6
170	1.946	2.611	1.735	1.338	1.969	1.996	2.005	3.284	160-170	0.7525	221.0	99.9,99.9
180	1.146	1.231	1.658	2.151	1.151	1.138	2.236	2.091	170-180	0.1934	221.2	100,100
DEG	LUMINOUS INTENSITY:cd									UNIT:lm		

Conical surface Flux(90deg): 73.143 lm

%lum = 33.1%

%lamp = 33.1%

Conical surface Flux(120deg): 112.49 lm

%lum = 50.9%

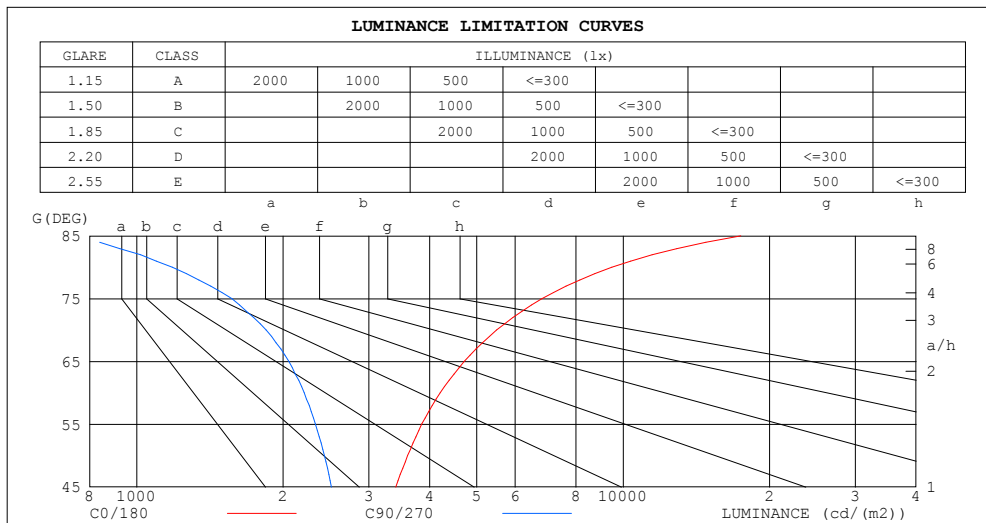
%lamp = 50.9%

C Range: 0 - 360DEG
 C Interval: 30.0DEG
 Test Speed: HIGH
 Temperature:25.3DEG
 Operators:LPC
 Test Date:2021-12-07

γ Range: 0 - 180DEG
 γ Interval: 1.0DEG
 Test System:EVERFINE GO-2000B_V1 SYSTEM V2.0.362
 Humidity:65.0%
 Test Distance:9.200m [K=1.0000]
 Remarks:

LUMINANCE LIMITATION CURVES

Test:U:24.00V I:0.4201A P:10.08W PF:1.000 Freq:50.00Hz Lamp Flux:221.153x1 lm		
NAME: SF21-24V-2835-72-CC-2700-80	TYPE: 硅胶	WEIGHT:
SPEC.:	DIM.: 28mm*11.5mm	SERIAL No.:2021120703
MFR.: OLYMPIA	SUR.:1*0.016	Shielding Angle:



LUMINANCE cd/(m2)		
G (DEG)	C0/180	C90/270
85	17451	733
80	9471	1183
75	6814	1569
70	5495	1846
65	4715	2054
60	4205	2208
55	3855	2331
50	3606	2430
45	3409	2514

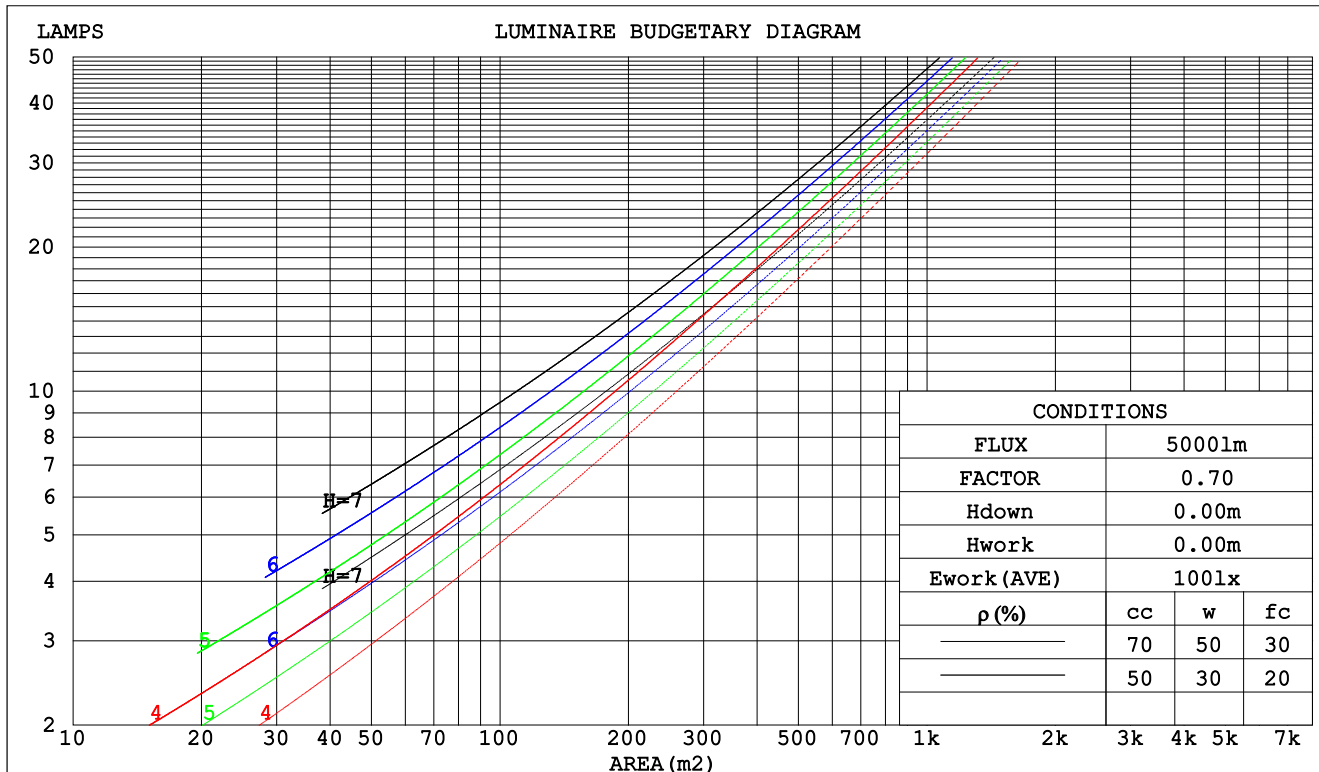
C Range: 0 - 360DEG
C Interval: 30.0DEG
Test Speed: HIGH
Temperature:25.3DEG
Operators:LPC
Test Date:2021-12-07

γ Range: 0 - 180DEG
 γ Interval: 1.0DEG
Test System:EVERFINE GO-2000B_V1 SYSTEM V2.0.362
Humidity:65.0%
Test Distance:9.200m [K=1.0000]
Remarks:

CU AND LUMINAIRE BUDGETARY ESTIMATE DIAGRAM

Test:U:24.00V I:0.4201A P:10.08W PF:1.000 Freq:50.00Hz Lamp Flux:221.153x1 lm		
NAME: SF21-24V-2835-72-CC-2700-80	TYPE: 硅胶	WEIGHT:
SPEC.:	DIM.: 28mm*11.5mm	SERIAL No.:2021120703
MFR.: OLYMPIA	SUR.:1*0.016	Shielding Angle:

pcc	80%			70%			50%			30%			10%			0
pw	50%	30%	10%	50%	30%	10%	50%	30%	10%	50%	30%	10%	50%	30%	10%	0
pfc	20%			20%			20%			20%			20%			0
RCR	Coefficients of Utilization(CU)															
0.0	1.14	1.14	1.14	1.09	1.09	1.09	.99	.99	.99	.90	.90	.90	.82	.82	.82	.78
1.0	.95	.89	.85	.90	.86	.81	.82	.78	.75	.74	.71	.69	.67	.65	.63	.59
2.0	.81	.73	.67	.77	.70	.64	.70	.64	.59	.64	.59	.55	.58	.54	.51	.47
3.0	.70	.61	.54	.67	.59	.52	.61	.54	.49	.55	.50	.45	.50	.46	.42	.38
4.0	.62	.52	.45	.59	.50	.44	.54	.46	.41	.49	.43	.38	.44	.39	.35	.32
5.0	.55	.45	.38	.52	.44	.37	.48	.40	.35	.44	.37	.32	.40	.34	.30	.27
6.0	.49	.40	.33	.47	.38	.32	.43	.36	.30	.39	.33	.28	.36	.30	.26	.24
7.0	.44	.35	.29	.42	.34	.28	.39	.32	.26	.36	.29	.25	.32	.27	.23	.21
8.0	.40	.31	.26	.39	.30	.25	.35	.28	.23	.33	.26	.22	.30	.25	.21	.18
9.0	.37	.28	.23	.35	.27	.22	.33	.26	.21	.30	.24	.20	.27	.22	.18	.16
10.0	.34	.26	.20	.32	.25	.20	.30	.23	.19	.28	.22	.18	.25	.20	.17	.15



C Range: 0 - 360DEG
 C Interval: 30.0DEG
 Test Speed: HIGH
 Temperature:25.3DEG
 Operators:LPC
 Test Date:2021-12-07

γ Range: 0 - 180DEG
 γ Interval: 1.0DEG
 Test System:EVERFINE GO-2000B_V1 SYSTEM V2.0.362
 Humidity:65.0%
 Test Distance:9.200m [K=1.0000]
 Remarks:

WEC AND CCEC

Test:U:24.00V I:0.4201A P:10.08W PF:1.000 Freq:50.00Hz Lamp Flux:221.153x1 lm		
NAME: SF21-24V-2835-72-CC-2700-80	TYPE: 硅胶	WEIGHT:
SPEC.:	DIM.: 28mm*11.5mm	SERIAL No.:2021120703
MFR.: OLYMPIA	SUR.:1*0.016	Shielding Angle:

pcc	80%			70%			50%			30%			10%			0	
pw	50%	30%	10%	50%	30%	10%	50%	30%	10%	50%	30%	10%	50%	30%	10%	0	
pfc	20%			20%			20%			20%			20%			0	
RCR	RCR:Room Cavity Ratio						Wall Exitance Coefficients(WEC)										
0.0																	
1.0	.384	.218	.069	.370	.211	.067	.345	.198	.063	.321	.185	.059	.299	.173	.056		
2.0	.332	.182	.056	.319	.176	.054	.296	.164	.051	.274	.154	.048	.254	.144	.045		
3.0	.294	.157	.047	.283	.152	.046	.262	.142	.043	.242	.133	.041	.224	.124	.038		
4.0	.265	.138	.040	.255	.133	.039	.235	.125	.037	.217	.117	.035	.201	.109	.033		
5.0	.241	.123	.036	.231	.119	.035	.214	.111	.033	.198	.104	.031	.182	.097	.029		
6.0	.220	.111	.032	.212	.107	.031	.196	.100	.029	.181	.094	.028	.167	.088	.026		
7.0	.203	.101	.028	.196	.097	.028	.181	.091	.026	.167	.086	.025	.154	.080	.024		
8.0	.189	.092	.026	.182	.089	.025	.168	.084	.024	.155	.079	.023	.143	.074	.021		
9.0	.176	.085	.024	.169	.082	.023	.157	.078	.022	.145	.073	.021	.134	.068	.020		
10.0	.164	.079	.022	.158	.077	.021	.147	.072	.020	.136	.068	.019	.126	.063	.018		

pcc	80%			70%			50%			30%			10%			0
pw	50%	30%	10%	50%	30%	10%	50%	30%	10%	50%	30%	10%	50%	30%	10%	0
pfc	20%			20%			20%			20%			20%			0
RCR	RCR:Room Cavity Ratio						Ceiling Cavity Exitance Coefficients(CCEC)									
0.0	.355	.355	.355	.303	.303	.303	.207	.207	.207	.119	.119	.119	.038	.038	.038	
1.0	.351	.321	.294	.300	.275	.253	.205	.189	.175	.118	.110	.102	.038	.035	.033	
2.0	.344	.298	.260	.295	.257	.225	.202	.178	.157	.116	.103	.092	.037	.033	.030	
3.0	.337	.282	.238	.289	.243	.207	.198	.169	.145	.114	.099	.085	.037	.032	.028	
4.0	.329	.269	.224	.282	.233	.195	.194	.162	.137	.112	.095	.081	.036	.031	.027	
5.0	.321	.260	.214	.276	.225	.187	.190	.157	.132	.110	.092	.078	.035	.030	.026	
6.0	.314	.252	.207	.270	.218	.181	.186	.153	.128	.108	.090	.076	.035	.029	.025	
7.0	.307	.245	.202	.264	.213	.176	.182	.149	.125	.106	.088	.074	.034	.029	.025	
8.0	.300	.240	.198	.258	.208	.173	.179	.146	.123	.104	.086	.073	.034	.028	.024	
9.0	.294	.235	.195	.253	.204	.170	.175	.143	.121	.102	.085	.072	.033	.028	.024	
10.0	.288	.231	.193	.248	.201	.168	.172	.141	.120	.100	.083	.071	.033	.027	.024	

C Range: 0 - 360DEG
 C Interval: 30.0DEG
 Test Speed: HIGH
 Temperature:25.3DEG
 Operators:LPC
 Test Date:2021-12-07

γ Range: 0 - 180DEG
 γ Interval: 1.0DEG
 Test System:EVERFINE GO-2000B_V1 SYSTEM V2.0.362
 Humidity:65.0%
 Test Distance:9.200m [K=1.0000]
 Remarks:

UGR(Unified Glare Rating) Table

Test:U:24.00V I:0.4201A P:10.08W PF:1.000 Freq:50.00Hz Lamp Flux:221.153x1 lm										
NAME: SF21-24V-2835-72-CC-2700-80					TYPE: 硅胶			WEIGHT:		
SPEC.:					DIM.: 28mm*11.5mm			SERIAL No.:2021120703		
MFR.: OLYMPIA					SUR.:1*0.016			Shielding Angle:		
ceiling/cavity	0.7	0.7	0.5	0.5	0.3	0.7	0.7	0.5	0.5	0.3
walls	0.5	0.3	0.5	0.3	0.3	0.5	0.3	0.5	0.3	0.3
working plane	0.2	0.2	0.2	0.2	0.2	0.2	0.2	0.2	0.2	0.2
Room dimensions	Viewed crosswise					Viewed endwise				
x = 2H y = 2H	22.0	23.3	22.5	23.9	24.5	19.7	21.0	20.2	21.6	22.2
3H	24.7	25.9	25.3	26.5	27.2	21.1	22.3	21.7	22.9	23.6
4H	26.2	27.4	26.8	28.0	28.7	21.7	22.8	22.3	23.4	24.1
6H	27.9	29.0	28.5	29.6	30.4	22.0	23.1	22.6	23.7	24.4
8H	28.9	29.9	29.5	30.6	31.3	22.1	23.1	22.7	23.8	24.5
12H	29.9	31.0	30.6	31.6	32.3	22.1	23.1	22.8	23.8	24.5
4H 2H	22.6	23.7	23.2	24.3	25.0	20.9	22.1	21.5	22.7	23.4
3H	25.6	26.6	26.2	27.2	28.0	22.7	23.7	23.3	24.4	25.1
4H	27.3	28.2	27.9	28.9	29.7	23.5	24.4	24.2	25.1	25.9
6H	29.2	30.0	29.9	30.7	31.5	24.1	24.9	24.8	25.6	26.4
8H	30.2	31.0	30.9	31.7	32.5	24.3	25.1	25.0	25.8	26.6
12H	31.4	32.2	32.2	32.9	33.7	24.4	25.2	25.1	25.9	26.7
8H 4H	27.6	28.4	28.3	29.1	30.0	24.7	25.5	25.4	26.2	27.0
6H	29.9	30.5	30.6	31.3	32.1	25.8	26.5	26.5	27.2	28.0
8H	31.1	31.7	31.9	32.5	33.4	26.3	26.9	27.0	27.6	28.5
12H	32.6	33.1	33.4	33.9	34.8	26.6	27.2	27.4	27.9	28.8
12H 4H	27.7	28.4	28.4	29.1	30.0	25.1	25.8	25.8	26.6	27.4
6H	30.0	30.6	30.7	31.3	32.2	26.5	27.0	27.2	27.8	28.7
8H	31.4	31.9	32.2	32.7	33.6	27.1	27.7	27.9	28.4	29.3
Variations with the observer position at spacings:										
S = 1.0H	+ 0.1 / - 0.1					+ 0.1 / - 0.1				
1.5H	+ 0.2 / - 0.3					+ 0.2 / - 0.3				
2.0H	+ 0.2 / - 0.4					+ 0.3 / - 0.4				

CIE Pub.117, 221.2 lm Total Lamp Luminous Flux Correct (8log(F/F0) = -5.2)

C Range: 0 - 360DEG
 C Interval: 30.0DEG
 Test Speed: HIGH
 Temperature:25.3DEG
 Operators:LPC
 Test Date:2021-12-07

γ Range: 0 - 180DEG
 γ Interval: 1.0DEG
 Test System:EVERFINE GO-2000B_V1 SYSTEM V2.0.362
 Humidity:65.0%
 Test Distance:9.200m [K=1.0000]
 Remarks:

UTILIZATION FACTORS TABLE

Test:U:24.00V I:0.4201A P:10.08W PF:1.000 Freq:50.00Hz Lamp Flux:221.153x1 lm		
NAME: SF21-24V-2835-72-CC-2700-80	TYPE: 硅胶	WEIGHT:
SPEC.:	DIM.: 28mm*11.5mm	SERIAL No.:2021120703
MFR.: OLYMPIA	SUR.:1*0.016	Shielding Angle:

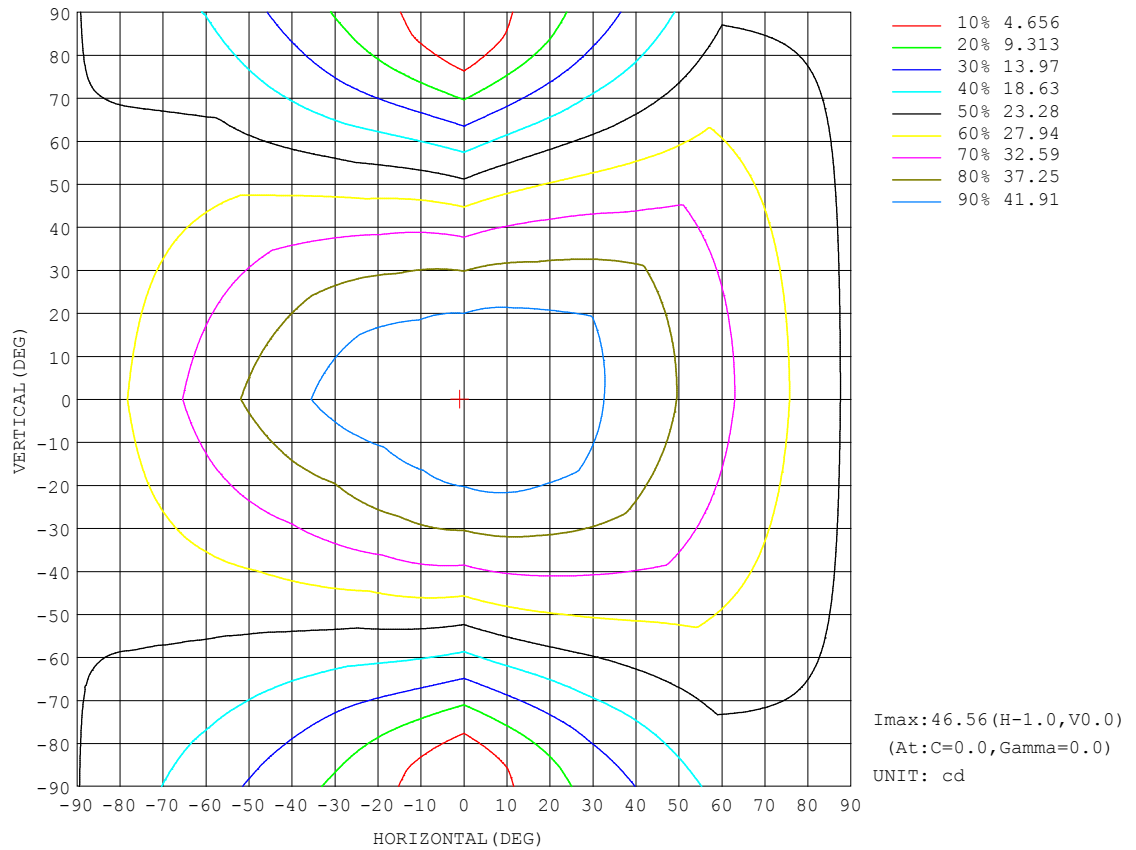
REFLECTANCE										
Ceiling	0.8	0.8	0.8	0.7	0.7	0.7	0.5	0.5	0.5	0
Walls	0.7	0.5	0.3	0.7	0.5	0.3	0.7	0.5	0.3	0
Working plane	0.2	0.2	0.2	0.2	0.2	0.2	0.2	0.2	0.2	0
ROOM INDEX	UTILIZATION FACTORS (PERCENT) $k(RI) \times RCR = 5$									
$k = 0.60$	47	34	27	46	34	27	44	33	26	20
0.80	56	43	35	54	42	34	51	40	33	25
1.00	64	51	42	61	49	42	58	50	40	31
1.25	70	58	49	68	56	48	63	53	46	36
1.50	76	63	55	73	61	53	67	58	51	40
2.00	83	72	63	80	69	62	73	65	58	46
2.50	87	77	69	84	74	67	77	69	63	50
3.00	91	82	74	87	79	72	80	73	68	53
4.00	96	88	81	92	84	78	84	78	73	58
5.00	99	92	86	94	88	83	86	81	77	61
ROOM INDEX	UF (total)									Direct
According to DIN EN 13032-2 2004			Suspended					SHRNOM = 1.25		

C Range: 0 - 360DEG
C Interval: 30.0DEG
Test Speed: HIGH
Temperature:25.3DEG
Operators:LPC
Test Date:2021-12-07

γ Range: 0 - 180DEG
 γ Interval: 1.0DEG
Test System:EVERFINE GO-2000B_V1 SYSTEM V2.0.362
Humidity:65.0%
Test Distance:9.200m [K=1.0000]
Remarks:

ISOCANDELA DIAGRAM

Test:U:24.00V I:0.4201A P:10.08W PF:1.000 Freq:50.00Hz Lamp Flux:221.153x1 lm		
NAME: SF21-24V-2835-72-CC-2700-80	TYPE: 硅胶	WEIGHT:
SPEC.:	DIM.: 28mm*11.5mm	SERIAL No.:2021120703
MFR.: OLYMPIA	SUR.:1*0.016	Shielding Angle:

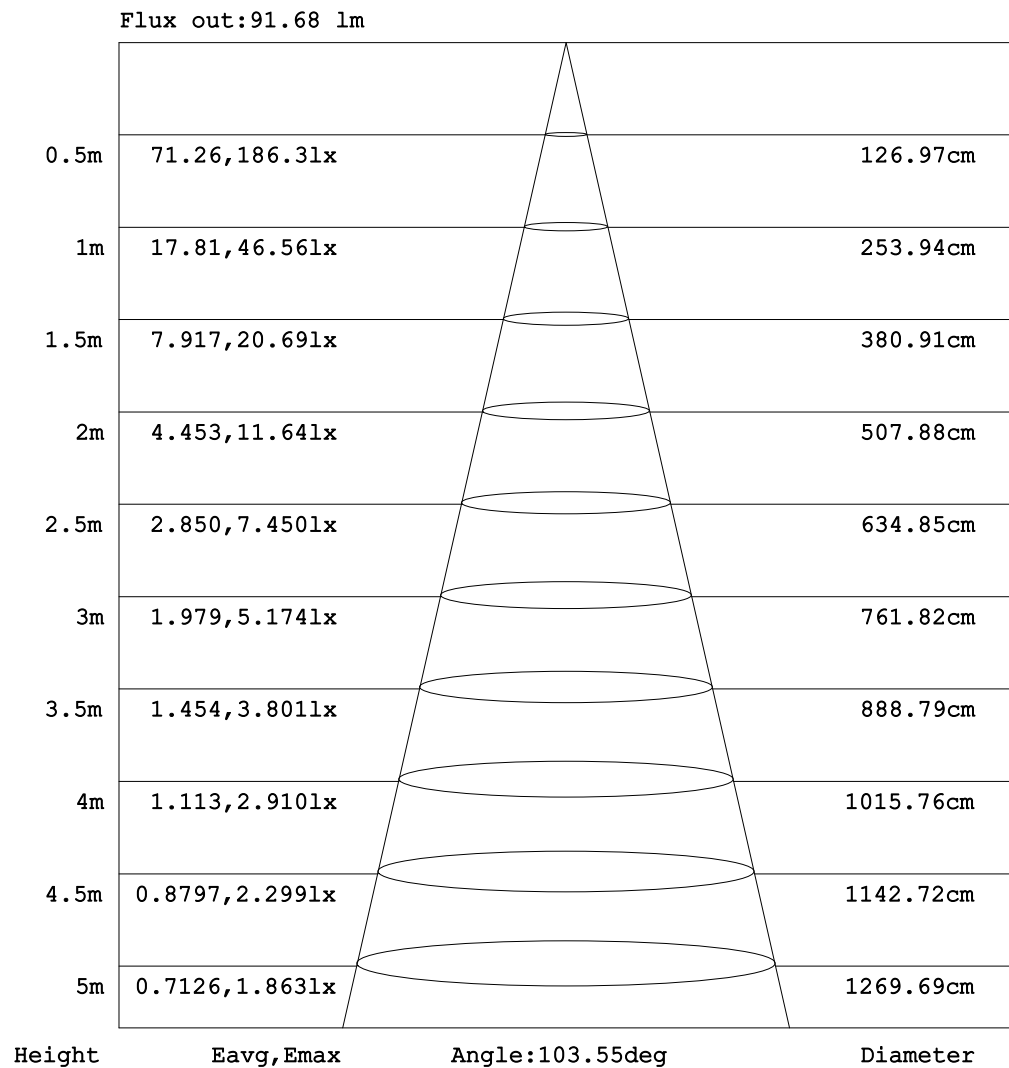


C Range: 0 - 360DEG
C Interval: 30.0DEG
Test Speed: HIGH
Temperature:25.3DEG
Operators:LPC
Test Date:2021-12-07

γ Range: 0 - 180DEG
 γ Interval: 1.0DEG
Test System:EVERFINE GO-2000B_V1 SYSTEM V2.0.362
Humidity:65.0%
Test Distance:9.200m [K=1.0000]
Remarks:

AAI Figure

Test:U:24.00V I:0.4201A P:10.08W PF:1.000 Freq:50.00Hz Lamp Flux:221.153x1 lm		
NAME: SF21-24V-2835-72-CC-2700-80	TYPE: 硅胶	WEIGHT:
SPEC.:	DIM.: 28mm*11.5mm	SERIAL No.:2021120703
MFR.: OLYMPIA	SUR.:1*0.016	Shielding Angle:



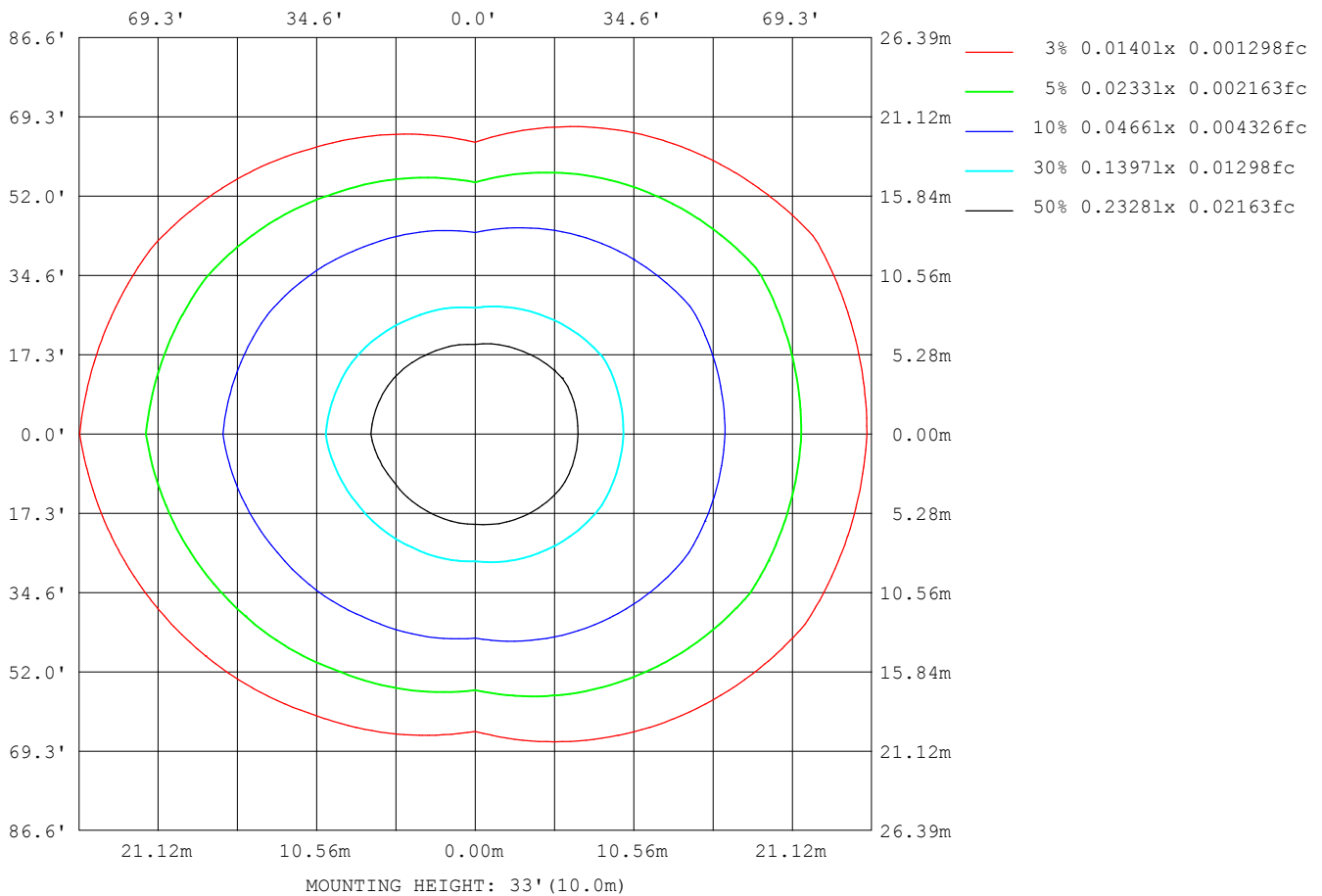
Note: The Curves indicate the illuminated area and the average illumination when the luminaire is at different distance.

C Range: 0 - 360DEG
 C Interval: 30.0DEG
 Test Speed: HIGH
 Temperature: 25.3DEG
 Operators: LPC
 Test Date: 2021-12-07

γ Range: 0 - 180DEG
 γ Interval: 1.0DEG
 Test System: EVERFINE GO-2000B_V1 SYSTEM V2.0.362
 Humidity: 65.0%
 Test Distance: 9.200m [K=1.0000]
 Remarks:

ISOLUX DIAGRAM

Test:U:24.00V I:0.4201A P:10.08W PF:1.000 Freq:50.00Hz Lamp Flux:221.153x1 lm		
NAME: SF21-24V-2835-72-CC-2700-80	TYPE: 硅胶	WEIGHT:
SPEC.:	DIM.: 28mm*11.5mm	SERIAL No.:2021120703
MFR.: OLYMPIA	SUR.:1*0.016	Shielding Angle:



C Range: 0 - 360DEG
 C Interval: 30.0DEG
 Test Speed: HIGH
 Temperature: 25.3DEG
 Operators: LPC
 Test Date: 2021-12-07

γ Range: 0 - 180DEG
 γ Interval: 1.0DEG
 Test System: EVERFINE GO-2000B_V1 SYSTEM V2.0.362
 Humidity: 65.0%
 Test Distance: 9.200m [K=1.0000]
 Remarks:

LED Avg.L Report

Test:U:24.00V I:0.4201A P:10.08W PF:1.000 Freq:50.00Hz Lamp Flux:221.153x1 lm		
NAME: SF21-24V-2835-72-CC-2700-80	TYPE:硅胶	WEIGHT:
SPEC.:	DIM.: 28mm*11.5mm	SERIAL No.:2021120703
MFR.: OLYMPIA	SUR.:1*0.016	Shielding Angle:

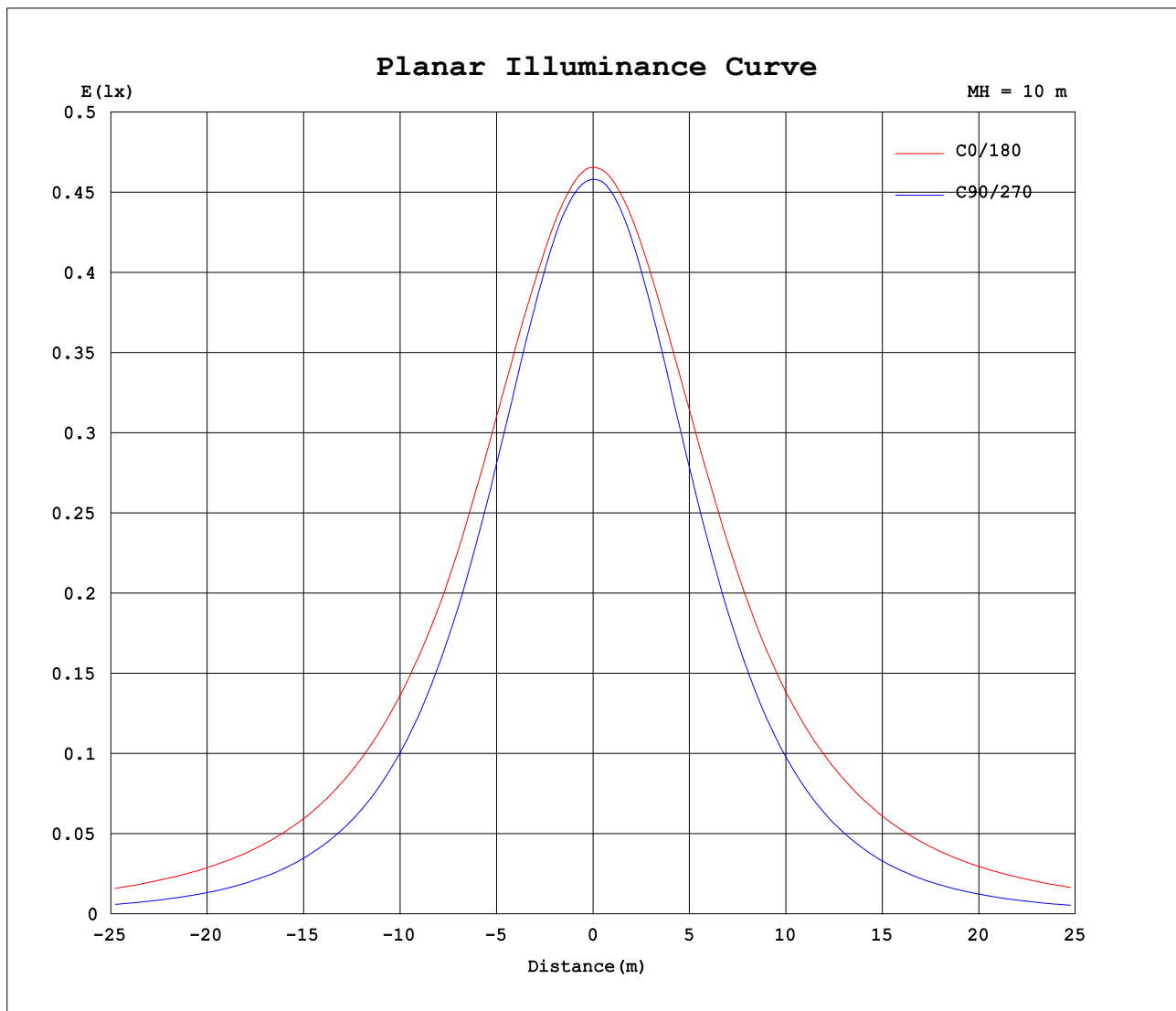
AvgL	cd/m2
L_0~180 (65) av	4779
L_0~180 (75) av	6927
L_0~180 (85) av	17815
L_90~270 (65) av	1972
L_90~270 (75) av	1446
L_90~270 (85) av	589
L_45 (65) av	3705
L_45 (75) av	4990
L_45 (85) av	12058

Standard: GB/T 29293-2012

C Range: 0 - 360DEG
C Interval: 30.0DEG
Test Speed: HIGH
Temperature:25.3DEG
Operators:LPC
Test Date:2021-12-07

γ Range: 0 - 180DEG
γ Interval: 1.0DEG
Test System:EVERFINE GO-2000B_V1 SYSTEM V2.0.362
Humidity:65.0%
Test Distance:9.200m [K=1.0000]
Remarks:

Planar Illuminance Curve



C Range: 0 - 360DEG
C Interval: 30.0DEG
Test Speed: HIGH
Temperature: 25.3DEG
Operators: LPC
Test Date: 2021-12-07

γ Range: 0 - 180DEG
 γ Interval: 1.0DEG
Test System: EVERFINE GO-2000B_V1 SYSTEM V2.0.362
Humidity: 65.0%
Test Distance: 9.200m [K=1.0000]
Remarks:

LUMINOUS DISTRIBUTION INTENSITY DATA

Test:U:24.00V I:0.4201A P:10.08W PF:1.000 Freq:50.00Hz Lamp Flux:221.153x1 lm		
NAME: SF21-24V-2835-72-CC-2700-80	TYPE: 硅胶	WEIGHT:
SPEC.:	DIM.: 28mm*11.5mm	SERIAL No.:2021120703
MFR.: OLYMPIA	SUR.:1*0.016	Shielding Angle:

Table--1

UNIT: cd

C (DEG) γ (DEG)	0	30	60	90	120	150	180	210	240	270	300	330						
0	46.6	46.5	46.1	45.8	45.7	45.7	46.6	46.5	46.1	45.8	45.7	45.7						
5	46.3	46.4	46.2	45.6	45.2	45.1	46.5	46.2	45.8	45.7	45.8	46.0						
10	45.8	46.0	45.8	45.0	44.4	44.3	46.2	45.7	45.1	44.9	45.4	46.0						
15	45.2	45.4	44.8	43.7	43.1	43.4	45.7	44.9	43.9	43.7	44.6	45.7						
20	44.5	44.5	43.4	42.0	41.6	42.3	44.9	43.9	42.3	41.9	43.3	45.0						
25	43.6	43.4	41.7	40.0	39.7	40.8	44.2	42.8	40.5	39.7	41.6	44.1						
30	42.6	42.2	39.7	37.5	37.6	39.2	43.2	41.4	38.5	37.1	39.6	43.1						
35	41.2	40.8	37.5	34.7	35.3	37.4	42.1	39.8	36.2	34.2	37.6	41.9						
40	39.8	39.1	35.2	31.7	32.7	35.6	40.6	37.9	33.8	31.1	35.4	40.6						
45	38.6	37.2	32.7	28.4	30.0	33.8	39.2	36.1	31.1	27.7	33.1	39.1						
50	37.1	35.5	30.1	25.0	27.2	31.8	37.8	34.2	28.3	24.1	30.6	37.4						
55	35.4	33.7	27.5	21.4	24.4	29.7	36.3	32.2	25.4	20.4	28.1	35.5						
60	33.6	31.7	24.7	17.7	21.6	27.6	34.6	30.2	22.6	16.6	25.4	33.9						
65	31.9	29.7	21.8	13.9	18.8	25.6	32.7	28.1	19.8	12.8	22.6	32.1						
70	30.1	27.7	19.3	10.1	16.2	23.6	31.0	26.1	17.0	9.00	19.9	30.1						
75	28.2	25.8	16.8	6.50	13.8	21.7	29.2	24.1	14.5	5.48	17.5	28.2						
80	26.3	23.9	14.5	3.29	11.7	19.8	27.3	22.2	12.3	2.54	15.1	26.4						
85	24.3	22.0	12.6	1.02	9.99	17.9	25.4	20.3	10.5	0.62	13.2	24.6						
90	22.3	20.0	11.0	0.65	8.55	16.1	23.4	18.5	8.99	0.48	11.6	22.7						
95	20.4	18.2	9.75	0.68	7.51	14.6	21.5	16.7	7.84	0.51	10.3	21.0						
100	18.2	15.0	8.83	0.74	6.82	12.0	19.2	14.0	7.04	0.53	9.23	17.6						
105	16.6	14.1	7.43	0.78	5.01	11.4	17.5	13.0	5.52	0.60	7.69	16.3						
110	15.1	13.1	6.30	0.81	4.79	10.6	15.9	12.0	5.18	0.61	7.41	14.8						
115	13.8	12.1	5.88	0.89	4.39	9.22	13.9	10.8	4.70	0.63	6.94	13.7						
120	12.6	11.2	5.77	1.01	4.15	8.40	12.7	9.83	4.53	0.70	6.24	12.5						
125	11.5	9.93	5.08	1.13	4.03	7.70	11.6	8.95	4.34	0.79	5.79	11.6						
130	10.4	8.35	4.49	1.24	3.69	6.96	10.6	8.14	4.15	0.87	5.31	10.8						
135	9.07	6.67	4.06	1.35	3.47	6.15	9.61	7.39	3.85	0.96	4.82	8.92						
140	7.74	5.49	3.68	1.45	3.11	5.50	7.77	6.66	3.55	1.04	4.21	7.09						
145	6.64	4.65	3.30	1.52	2.80	4.80	7.41	5.93	3.26	1.12	3.82	6.31						
150	5.84	3.95	2.95	1.66	2.43	4.15	6.54	5.23	3.04	1.33	3.43	5.42						
155	5.15	3.36	2.97	1.71	1.97	3.53	5.71	4.57	2.64	1.49	3.42	4.64						
160	4.35	2.84	3.01	1.74	1.46	2.88	4.84	3.95	2.21	1.67	3.43	3.83						
165	3.59	2.49	2.99	1.74	1.17	2.07	4.20	3.30	1.81	1.84	3.41	3.25						
170	1.95	2.34	2.88	1.73	1.16	1.52	1.97	2.61	1.38	2.01	3.32	3.25						
175	1.53	2.00	2.74	1.73	1.15	1.24	1.65	1.86	1.20	2.13	3.18	3.13						
180	1.15	1.14	1.32	1.66	2.36	1.94	1.15	1.15	1.13	2.24	2.24	1.94						

C Range: 0 - 360DEG
C Interval: 30.0DEG
Test Speed: HIGH
Temperature:25.3DEG
Operators:LPC
Test Date:2021-12-07

γ Range: 0 - 180DEG
γ Interval: 1.0DEG
Test System:EVERFINE GO-2000B_V1 SYSTEM V2.0.362
Humidity:65.0%
Test Distance:9.200m [K=1.0000]
Remarks:

Photometric Data Table [cd]

G/C	0.0	30.0	60.0	90.0	120.0	150.0	180.0	210.0	240.0	270.0
0.0	46.56	46.47	46.15	45.82	45.72	45.67	46.56	46.47	46.15	45.82
3.0	46.48	46.47	46.18	45.73	45.47	45.36	46.56	46.39	46.00	45.82
6.0	46.25	46.35	46.11	45.49	45.10	44.94	46.46	46.16	45.71	45.59
9.0	45.94	46.12	45.87	45.13	44.60	44.47	46.27	45.84	45.28	45.15
12.0	45.57	45.79	45.45	44.50	43.94	43.99	46.00	45.41	44.64	44.49
15.0	45.17	45.37	44.81	43.69	43.13	43.42	45.66	44.90	43.85	43.65
18.0	44.76	44.89	44.04	42.72	42.23	42.78	45.24	44.32	42.93	42.66
21.0	44.33	44.32	43.12	41.63	41.21	42.05	44.81	43.69	41.92	41.48
24.0	43.83	43.60	42.09	40.37	40.10	41.18	44.37	43.00	40.84	40.13
27.0	43.24	42.91	40.92	38.99	38.91	40.20	43.85	42.25	39.69	38.70
30.0	42.57	42.19	39.71	37.52	37.62	39.19	43.25	41.40	38.45	37.11
33.0	41.78	41.36	38.39	35.87	36.24	38.12	42.57	40.44	37.17	35.42
36.0	40.91	40.44	37.03	34.13	34.79	37.03	41.79	39.42	35.77	33.63
39.0	40.04	39.47	35.63	32.34	33.26	35.98	40.93	38.31	34.30	31.72
42.0	39.35	38.38	34.18	30.43	31.67	34.93	40.08	37.19	32.75	29.76
45.0	38.57	37.22	32.69	28.45	30.02	33.76	39.21	36.06	31.13	27.71
48.0	37.70	36.14	31.18	26.42	28.34	32.57	38.37	34.95	29.46	25.59
51.0	36.77	35.15	29.63	24.29	26.67	31.35	37.52	33.81	27.75	23.40
54.0	35.74	34.06	28.00	22.11	24.98	30.08	36.58	32.64	26.02	21.20
57.0	34.69	32.94	26.36	19.92	23.32	28.81	35.59	31.41	24.31	18.91
60.0	33.64	31.75	24.68	17.66	21.62	27.60	34.55	30.15	22.61	16.62
63.0	32.59	30.50	22.96	15.38	19.92	26.39	33.47	28.90	20.91	14.34
66.0	31.54	29.30	21.31	13.12	18.28	25.15	32.40	27.67	19.22	12.02
69.0	30.45	28.11	19.80	10.85	16.70	23.99	31.32	26.47	17.54	9.741
72.0	29.34	26.94	18.28	8.602	15.19	22.79	30.24	25.28	15.97	7.556
75.0	28.22	25.79	16.80	6.498	13.79	21.66	29.15	24.11	14.50	5.479
78.0	27.08	24.63	15.35	4.463	12.50	20.54	28.03	22.94	13.16	3.588
81.0	25.93	23.47	14.07	2.745	11.36	19.38	26.91	21.83	11.93	2.074
84.0	24.75	22.34	12.92	1.404	10.31	18.27	25.74	20.71	10.85	0.8179
87.0	23.50	21.21	11.90	0.6832	9.362	17.18	24.59	19.58	9.862	0.4930
90.0	22.30	20.05	11.02	0.6533	8.552	16.12	23.43	18.46	8.988	0.4784
93.0	21.15	18.95	10.22	0.6685	7.882	15.16	22.23	17.39	8.255	0.4946
96.0	20.01	17.90	9.541	0.6836	7.350	14.29	21.08	16.39	7.662	0.5109
99.0	18.92	16.02	8.988	0.7188	6.937	12.33	19.80	14.25	7.175	0.5271
102.0	17.56	14.73	8.520	0.7558	6.585	11.81	18.50	13.64	6.814	0.6028
105.0	16.61	14.12	7.431	0.7808	5.014	11.37	17.47	13.04	5.518	0.6041
108.0	15.71	13.52	6.863	0.8058	4.830	10.90	16.50	12.43	5.411	0.6054
111.0	14.86	12.90	6.014	0.8192	4.735	10.22	15.58	11.70	5.080	0.6067
114.0	14.08	12.31	5.609	0.8597	4.449	9.417	14.47	11.08	4.789	0.6081
117.0	13.35	11.76	5.936	0.9350	4.288	8.819	13.44	10.41	4.618	0.6632
120.0	12.65	11.24	5.771	1.005	4.152	8.397	12.72	9.832	4.527	0.7034
123.0	11.97	10.48	5.312	1.066	4.069	7.990	12.04	9.294	4.387	0.7638
126.0	11.32	9.622	4.957	1.146	3.991	7.568	11.44	8.766	4.296	0.8140
129.0	10.65	8.801	4.610	1.216	3.766	7.110	10.82	8.274	4.181	0.8642
132.0	9.884	7.546	4.278	1.277	3.629	6.678	10.21	7.877	4.025	0.9196
135.0	9.074	6.667	4.062	1.347	3.468	6.148	9.607	7.389	3.854	0.9598
138.0	8.240	5.733	3.855	1.407	3.268	5.773	8.918	6.922	3.673	1.005
141.0	7.506	5.300	3.604	1.463	3.031	5.366	7.179	6.520	3.482	1.070
144.0	6.837	4.774	3.383	1.513	2.840	4.964	7.552	6.052	3.326	1.101
147.0	6.289	4.376	3.147	1.568	2.684	4.512	6.914	5.645	3.191	1.161
150.0	5.841	3.954	2.946	1.664	2.433	4.150	6.542	5.228	3.044	1.326
153.0	5.440	3.563	2.880	1.699	2.152	3.768	6.054	4.841	2.798	1.422
156.0	5.012	3.246	3.010	1.720	1.886	3.401	5.572	4.454	2.562	1.518
159.0	4.585	2.934	3.009	1.738	1.614	3.014	5.103	4.082	2.296	1.638
162.0	4.017	2.643	3.000	1.737	1.177	2.551	4.602	3.751	2.039	1.744
165.0	3.590	2.486	2.991	1.736	1.170	2.075	4.205	3.303	1.809	1.844
168.0	2.073	2.417	2.965	1.735	1.164	1.626	2.160	2.896	1.561	1.960
171.0	1.865	2.296	2.850	1.735	1.157	1.461	1.879	2.439	1.346	2.050
174.0	1.595	2.080	2.765	1.734	1.149	1.296	1.723	1.986	1.236	2.096
177.0	1.343	1.832	2.649	1.729	1.141	1.131	1.517	1.590	1.126	2.171
180.0	1.146	1.141	1.322	1.658	2.357	1.945	1.151	1.146	1.131	2.236
G/C	300.0	330.0								
0.0	45.72	45.67								
3.0	45.78	45.90								
6.0	45.75	46.03								
9.0	45.57	45.99								
12.0	45.16	45.95								
15.0	44.60	45.71								
18.0	43.87	45.30								
21.0	42.98	44.81								
24.0	41.96	44.25								
27.0	40.82	43.68								
30.0	39.64	43.05								

C Range: 0 - 360DEG
 C Interval: 30.0DEG
 Test Speed: HIGH
 Temperature: 25.3DEG
 Operators: LPC
 Test Date: 2021-12-07

γ Range: 0 - 180DEG
 γ Interval: 1.0DEG
 Test System: EVERFINE GO-2000B_V1 SYSTEM V2.0.362
 Humidity: 65.0%
 Test Distance: 9.200m [K=1.0000]
 Remarks:

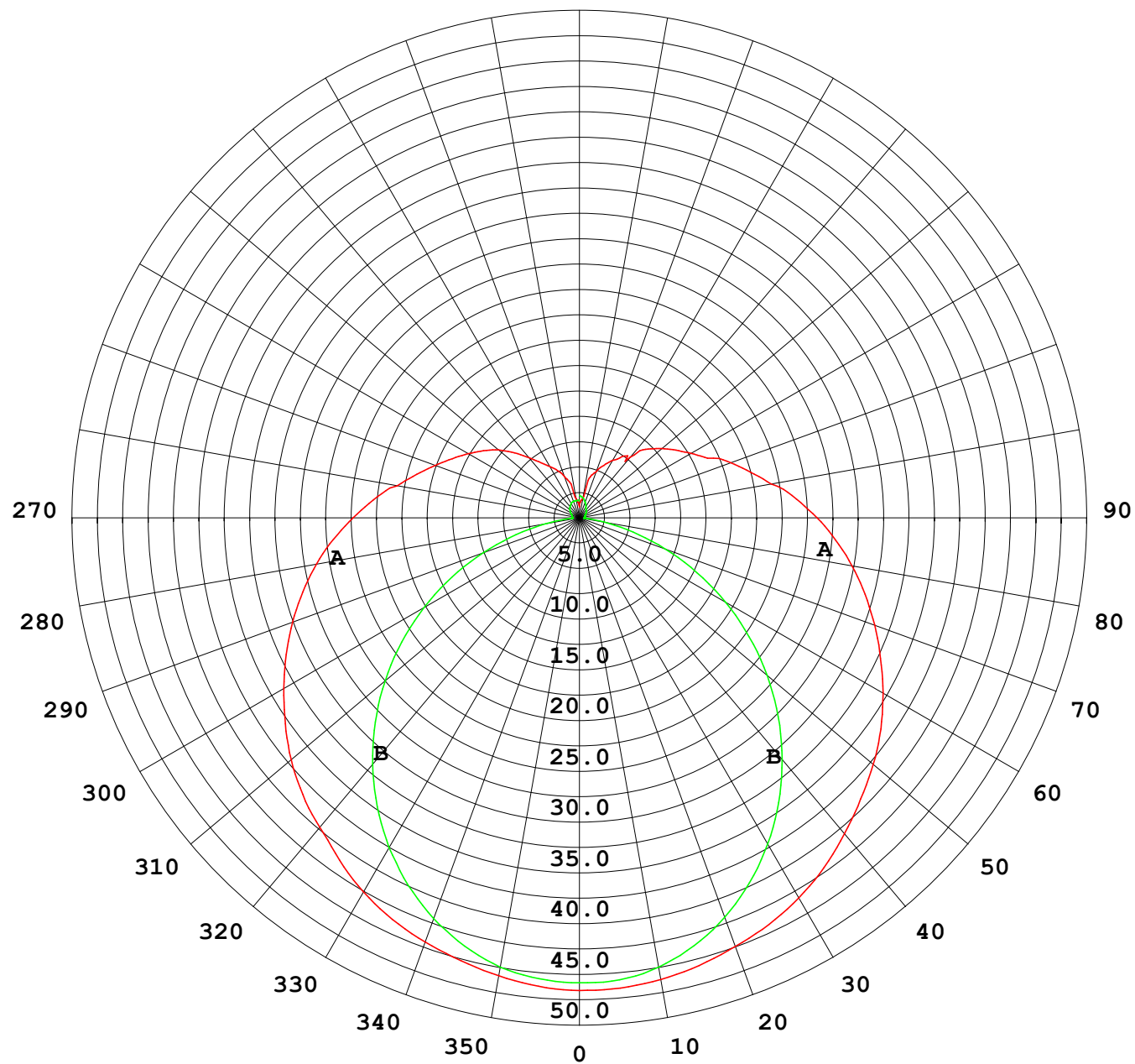
Photometric Data Table [cd]

33.0	38.42	42.38
36.0	37.15	41.68
39.0	35.83	40.90
42.0	34.50	40.05
45.0	33.11	39.11
48.0	31.66	38.09
51.0	30.13	36.99
54.0	28.58	35.84
57.0	27.00	34.88
60.0	25.36	33.87
63.0	23.69	32.83
66.0	22.04	31.73
69.0	20.44	30.55
72.0	18.95	29.37
75.0	17.48	28.23
78.0	16.05	27.12
81.0	14.71	26.03
84.0	13.52	24.94
87.0	12.47	23.82
90.0	11.56	22.72
93.0	10.75	21.66
96.0	10.03	20.59
99.0	9.411	18.67
102.0	8.746	17.27
105.0	7.694	16.34
108.0	7.508	15.29
111.0	7.405	14.63
114.0	7.100	13.97
117.0	6.582	13.27
120.0	6.236	12.51
123.0	5.999	11.90
126.0	5.678	11.37
129.0	5.367	11.03
132.0	5.120	10.01
135.0	4.818	8.924
138.0	4.426	7.779
141.0	4.065	6.987
144.0	3.859	6.575
147.0	3.668	5.962
150.0	3.432	5.424
153.0	3.393	4.962
156.0	3.419	4.469
159.0	3.428	3.987
162.0	3.438	3.505
165.0	3.412	3.252
168.0	3.362	3.260
171.0	3.282	3.240
174.0	3.191	3.182
177.0	3.090	3.056
180.0	2.236	1.945

C Range: 0 - 360DEG
C Interval: 30.0DEG
Test Speed: HIGH
Temperature: 25.3DEG
Operators: LPC
Test Date: 2021-12-07

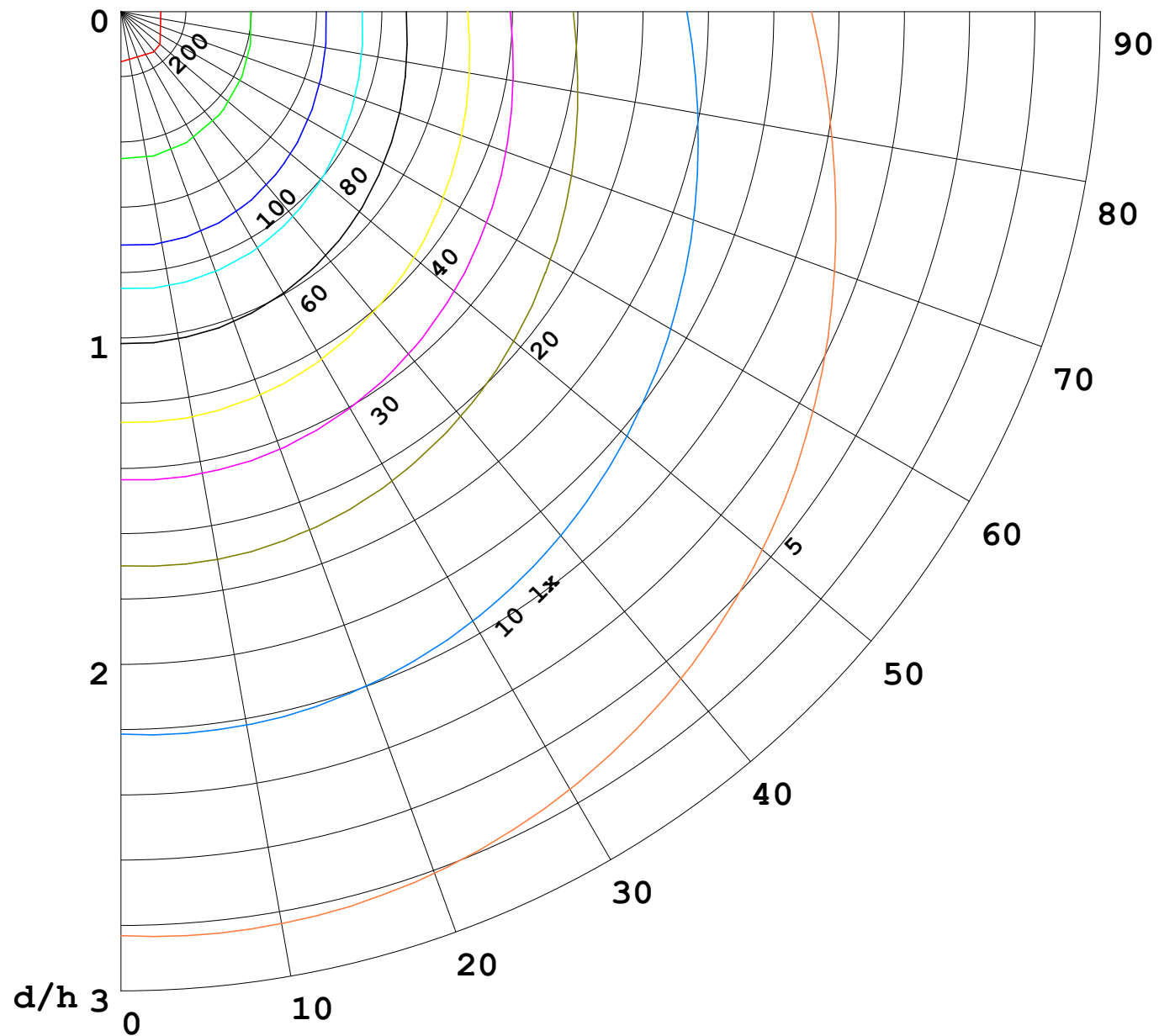
γ Range: 0 - 180DEG
γ Interval: 1.0DEG
Test System: EVERFINE GO-2000B_V1 SYSTEM V2.0.362
Humidity: 65.0%
Test Distance: 9.200m [K=1.0000]
Remarks:

I (cd)



1000 lm

$\kappa = 1$



F = 5000 lm
 K = 0.7
 Hcc = 0.0 m
 Hfc = 0.0 m
 Eave = 100 lx

	Pcc	Pw	Pfc
—	70	50	30
—	50	30	20

