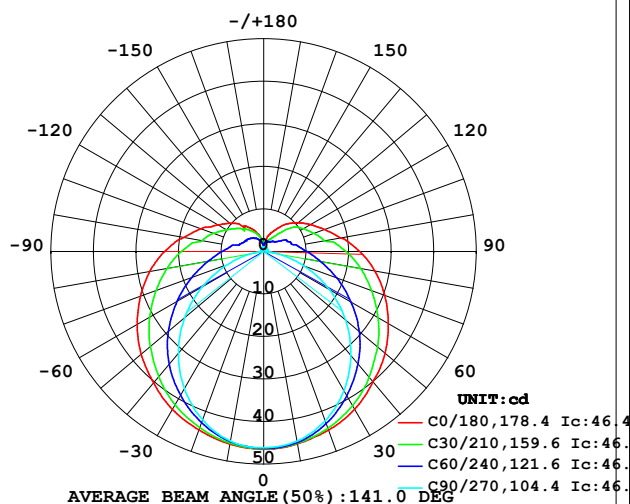


LUMINAIRE PHOTOMETRIC TEST REPORT

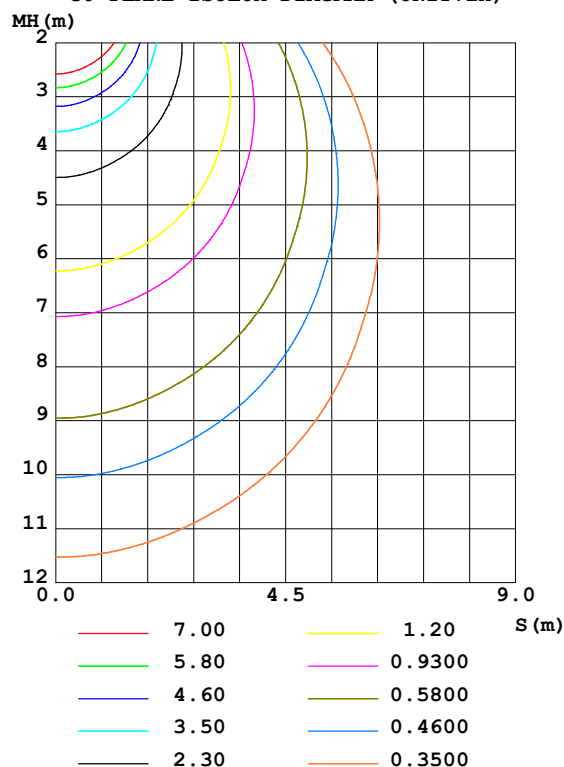
Test:U:24.00V I:0.4235A P:10.16W PF:1.000 Freq:50.00Hz Lamp Flux:221.44x1 lm		
NAME: SF21-24V-2835-72-CC-3500-80	TYPE: 硅胶	WEIGHT:
SPEC.:	DIM.: 28mm*11.5mm	SERIAL No.:2021120704
MFR.: OLYMPIA	SUR.:1*0.016	Shielding Angle:

DATA OF LAMP		PHOTOMETRIC DATA Eff: 21.79 lm/W			
MODEL	2835	I _{max} (cd)	46.48	S/MH (C0/180)	1.38
NOMINAL POWER (W)	10	LOR (%)	100.0	S/MH (C90/270)	1.21
RATED VOLTAGE (V)	24	TOTAL FLUX (lm)	221.44	η UP, DN (C0-180)	10.5, 39.0
NOMINAL FLUX (lm)	221.44	CIE CLASS	SEMI-D.	η UP, DN (C180-360)	10.9, 39.5
LAMPS INSIDE	1	η up (%)	21.4	CIBSE SHR NOM	1.50
TEST VOLTAGE (V)	24	η down (%)	78.6	CIBSE SHR MAX	1.55

LUMINOUS INTENSITY DISTRIBUTION DIAGRAM



C0 PLANE ISOLUX DIAGRAM (UNIT: lx)



C Range: 0 - 360DEG
 C Interval: 30.0DEG
 Test Speed: HIGH
 Temperature: 25.3DEG
 Operators: LPC
 Test Date: 2021-12-07

γ Range: 0 - 180DEG
 γ Interval: 1.0DEG
 Test System: EVERFINE GO-2000B_V1 SYSTEM V2.0.362
 Humidity: 65.0%
 Test Distance: 9.200m [K=1.0000]
 Remarks:

ZONAL FLUX DIAGRAM

ZONAL FLUX DIAGRAM:

γ	C0	C45	C90	C135	C180	C225	C270	C315	γ	Φ zone	Φ total	%lum, lamp
10	45.91	45.71	45.30	45.11	45.97	45.60	45.26	45.70	0- 10	4.382	4.382	1.98,1.98
20	44.66	43.62	42.36	42.85	44.63	43.42	42.05	43.58	10- 20	12.60	16.98	7.67,7.67
30	42.81	40.49	37.78	39.70	42.89	40.38	37.27	40.49	20- 30	19.34	36.33	16.4,16.4
40	40.00	36.55	31.91	35.69	40.31	36.50	31.19	36.79	30- 40	24.00	60.33	27.2,27.2
50	37.26	32.16	25.13	31.24	37.60	32.05	24.29	32.59	40- 50	26.27	86.59	39.1,39.1
60	33.83	27.36	17.77	26.44	34.35	27.24	16.69	28.01	50- 60	26.19	112.8	50.9,50.9
70	30.28	22.68	10.21	21.76	30.83	22.48	9.067	23.35	60- 70	24.01	136.8	61.8,61.8
80	26.55	18.37	3.348	17.57	27.18	18.17	2.507	19.07	70- 80	20.49	157.3	71,71
90	22.56	14.77	0.6734	14.05	23.28	14.57	0.4352	15.45	80- 90	16.71	174.0	78.6,78.6
100	18.41	11.22	0.7341	10.82	19.08	11.22	0.4923	11.81	90-100	13.48	187.5	84.7,84.7
110	15.20	9.614	0.7842	8.864	15.71	9.147	0.5611	10.01	100-110	10.34	197.8	89.3,89.3
120	12.69	8.013	0.8394	7.262	12.50	7.635	0.6191	8.398	110-120	8.090	205.9	93,93
130	10.53	6.193	0.9047	6.254	10.37	6.546	0.6984	6.617	120-130	6.098	212.0	95.7,95.7
140	8.461	4.341	0.9600	5.272	7.577	5.549	0.7839	4.785	130-140	4.266	216.3	97.7,97.7
150	6.134	3.045	1.073	4.214	6.426	4.591	0.9296	3.596	140-150	2.705	219.0	98.9,98.9
160	4.400	2.587	1.096	3.161	4.617	3.551	1.0000	2.822	150-160	1.572	220.5	99.6,99.6
170	1.966	2.204	1.094	2.055	1.989	2.429	1.017	2.452	160-170	0.7258	221.3	99.9,99.9
180	1.146	1.151	1.091	1.108	1.146	1.151	1.065	1.113	170-180	0.1687	221.4	100,100
DEG	LUMINOUS INTENSITY:cd									UNIT:lm		

Conical surface Flux(90deg): 73.321 lm

%lum = 33.1%

%lamp = 33.1%

Conical surface Flux(120deg): 112.78 lm

%lum = 50.9%

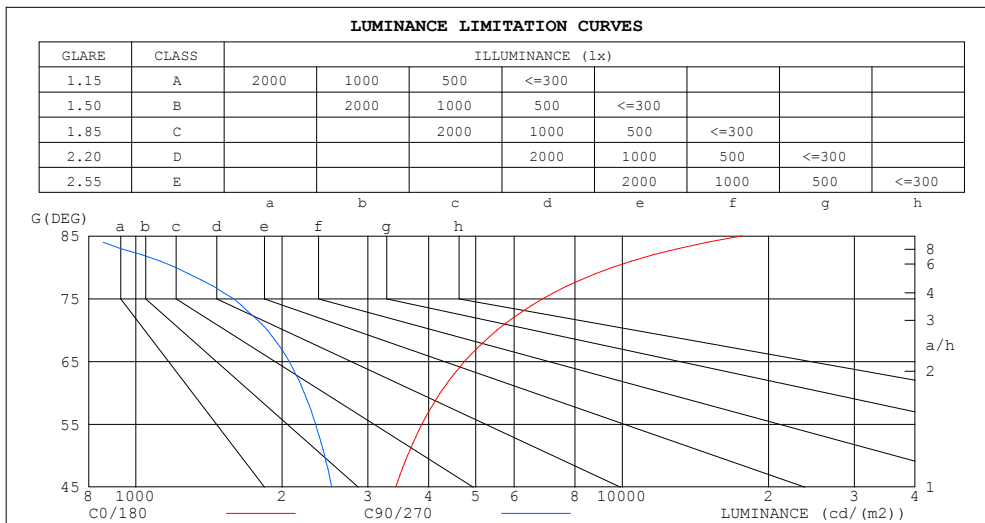
%lamp = 50.9%

C Range: 0 - 360DEG
 C Interval: 30.0DEG
 Test Speed: HIGH
 Temperature:25.3DEG
 Operators:LPC
 Test Date:2021-12-07

γ Range: 0 - 180DEG
 γ Interval: 1.0DEG
 Test System:EVERFINE GO-2000B_V1 SYSTEM V2.0.362
 Humidity:65.0%
 Test Distance:9.200m [K=1.0000]
 Remarks:

LUMINANCE LIMITATION CURVES

Test:U:24.00V I:0.4235A P:10.16W PF:1.000 Freq:50.00Hz Lamp Flux:221.44x1 lm		
NAME: SF21-24V-2835-72-CC-3500-80	TYPE: 硅胶	WEIGHT:
SPEC.:	DIM.: 28mm*11.5mm	SERIAL No.:2021120704
MFR.: OLYMPIA	SUR.:1*0.016	Shielding Angle:



LUMINANCE cd/(m2)		
G (DEG)	C0/180	C90/270
85	17641	758
80	9556	1205
75	6868	1587
70	5533	1865
65	4745	2067
60	4228	2221
55	3877	2343
50	3623	2444
45	3423	2529

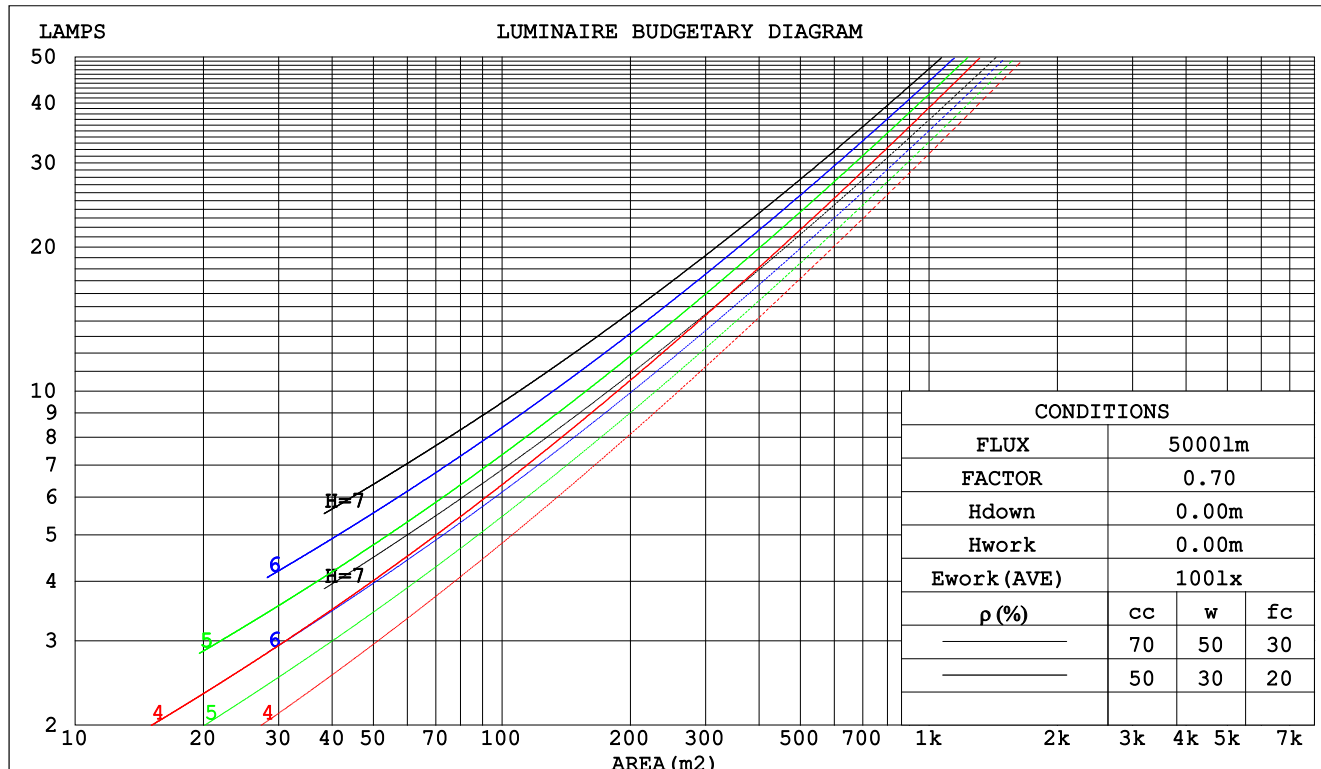
C Range: 0 - 360DEG
C Interval: 30.0DEG
Test Speed: HIGH
Temperature:25.3DEG
Operators:LPC
Test Date:2021-12-07

γ Range: 0 - 180DEG
 γ Interval: 1.0DEG
Test System:EVERFINE GO-2000B_V1 SYSTEM V2.0.362
Humidity:65.0%
Test Distance:9.200m [K=1.0000]
Remarks:

CU AND LUMINAIRE BUDGETARY ESTIMATE DIAGRAM

Test:U:24.00V I:0.4235A P:10.16W PF:1.000 Freq:50.00Hz Lamp Flux:221.44x1 lm		
NAME: SF21-24V-2835-72-CC-3500-80	TYPE: 硅胶	WEIGHT:
SPEC.:	DIM.: 28mm*11.5mm	SERIAL No.:2021120704
MFR.: OLYMPIA	SUR.:1*0.016	Shielding Angle:

pcc	80%			70%			50%			30%			10%			0
pw	50%	30%	10%	50%	30%	10%	50%	30%	10%	50%	30%	10%	50%	30%	10%	0
pfc	20%			20%			20%			20%			20%			0
RCR	RCR:Room Cavity Ratio						Coefficients of Utilization(CU)									
0.0	1.14	1.14	1.14	1.09	1.09	1.09	.99	.99	.99	.90	.90	.90	.82	.82	.82	.79
1.0	.95	.89	.85	.90	.86	.81	.82	.78	.75	.75	.71	.69	.68	.65	.63	.59
2.0	.81	.73	.67	.77	.70	.64	.70	.64	.59	.64	.59	.55	.58	.54	.51	.47
3.0	.70	.61	.54	.67	.59	.52	.61	.54	.49	.55	.50	.45	.50	.46	.42	.39
4.0	.62	.52	.45	.59	.50	.44	.54	.46	.41	.49	.43	.38	.44	.39	.35	.32
5.0	.55	.45	.38	.52	.44	.37	.48	.40	.35	.44	.37	.32	.40	.34	.30	.27
6.0	.49	.40	.33	.47	.38	.32	.43	.36	.30	.39	.33	.28	.36	.30	.26	.24
7.0	.44	.35	.29	.42	.34	.28	.39	.32	.26	.36	.29	.25	.33	.27	.23	.21
8.0	.40	.31	.26	.39	.30	.25	.35	.28	.23	.33	.26	.22	.30	.25	.21	.18
9.0	.37	.28	.23	.35	.27	.22	.33	.26	.21	.30	.24	.20	.28	.22	.18	.16
10.0	.34	.26	.20	.32	.25	.20	.30	.23	.19	.28	.22	.18	.26	.20	.17	.15



C Range: 0 - 360DEG
 C Interval: 30.0DEG
 Test Speed: HIGH
 Temperature:25.3DEG
 Operators:LPC
 Test Date:2021-12-07

γ Range: 0 - 180DEG
 γ Interval: 1.0DEG
 Test System:EVERFINE GO-2000B_V1 SYSTEM V2.0.362
 Humidity:65.0%
 Test Distance:9.200m [K=1.0000]
 Remarks:

WEC AND CCEC

Test:U:24.00V I:0.4235A P:10.16W PF:1.000 Freq:50.00Hz Lamp Flux:221.44x1 lm		
NAME: SF21-24V-2835-72-CC-3500-80	TYPE: 硅胶	WEIGHT:
SPEC.:	DIM.: 28mm*11.5mm	SERIAL No.:2021120704
MFR.: OLYMPIA	SUR.:1*0.016	Shielding Angle:

pcc	80%			70%			50%			30%			10%			0	
pw	50%	30%	10%	50%	30%	10%	50%	30%	10%	50%	30%	10%	50%	30%	10%	0	
pfc	20%			20%			20%			20%			20%			0	
RCR	RCR:Room Cavity Ratio						Wall Exitance Coefficients(WEC)										
0.0																	
1.0	.384	.219	.069	.371	.211	.067	.345	.198	.063	.321	.185	.059	.299	.174	.056		
2.0	.332	.182	.056	.319	.176	.054	.296	.165	.051	.275	.154	.048	.255	.144	.045		
3.0	.294	.157	.047	.283	.152	.046	.262	.142	.043	.242	.133	.041	.224	.124	.038		
4.0	.265	.138	.040	.255	.133	.039	.236	.125	.037	.218	.117	.035	.201	.109	.033		
5.0	.241	.123	.036	.231	.119	.035	.214	.111	.033	.198	.104	.031	.183	.098	.029		
6.0	.221	.111	.032	.212	.107	.031	.196	.101	.029	.181	.094	.028	.167	.088	.026		
7.0	.203	.101	.029	.196	.098	.028	.181	.092	.026	.167	.086	.025	.154	.080	.024		
8.0	.189	.092	.026	.182	.089	.025	.168	.084	.024	.155	.079	.023	.144	.074	.021		
9.0	.176	.085	.024	.169	.083	.023	.157	.078	.022	.145	.073	.021	.134	.068	.020		
10.0	.165	.079	.022	.159	.077	.021	.147	.072	.020	.136	.068	.019	.126	.063	.018		

pcc	80%			70%			50%			30%			10%			0	
pw	50%	30%	10%	50%	30%	10%	50%	30%	10%	50%	30%	10%	50%	30%	10%	0	
pfc	20%			20%			20%			20%			20%			0	
RCR	RCR:Room Cavity Ratio						Ceiling Cavity Exitance Coefficients(CCEC)										
0.0	.354	.354	.354	.302	.302	.302	.206	.206	.206	.119	.119	.119	.038	.038	.038		
1.0	.350	.320	.293	.300	.275	.252	.205	.189	.174	.118	.109	.101	.038	.035	.033		
2.0	.343	.297	.259	.294	.256	.224	.202	.177	.156	.116	.103	.091	.037	.033	.030		
3.0	.336	.281	.237	.288	.242	.206	.198	.168	.144	.114	.098	.085	.037	.032	.028		
4.0	.328	.269	.223	.281	.232	.194	.194	.162	.137	.112	.095	.081	.036	.031	.027		
5.0	.320	.259	.214	.275	.224	.186	.190	.157	.131	.110	.092	.078	.035	.030	.026		
6.0	.313	.251	.207	.269	.217	.180	.186	.152	.127	.108	.090	.076	.035	.029	.025		
7.0	.306	.244	.201	.263	.212	.176	.182	.149	.124	.106	.088	.074	.034	.029	.024		
8.0	.299	.239	.197	.258	.207	.172	.178	.146	.122	.104	.086	.073	.034	.028	.024		
9.0	.293	.234	.194	.253	.203	.170	.175	.143	.120	.102	.084	.072	.033	.028	.024		
10.0	.287	.230	.192	.248	.200	.168	.172	.141	.119	.100	.083	.071	.032	.027	.024		

C Range: 0 - 360DEG
 C Interval: 30.0DEG
 Test Speed: HIGH
 Temperature:25.3DEG
 Operators:LPC
 Test Date:2021-12-07

γ Range: 0 - 180DEG
 γ Interval: 1.0DEG
 Test System:EVERFINE GO-2000B_V1 SYSTEM V2.0.362
 Humidity:65.0%
 Test Distance:9.200m [K=1.0000]
 Remarks:

UGR(Unified Glare Rating) Table

Test:U:24.00V I:0.4235A P:10.16W PF:1.000 Freq:50.00Hz Lamp Flux:221.44x1 lm												
NAME: SF21-24V-2835-72-CC-3500-80						TYPE:硅胶		WEIGHT:				
SPEC.:						DIM.: 28mm*11.5mm		SERIAL No.:2021120704				
MFR.: OLYMPIA						SUR.:1*0.016		Shielding Angle:				
ceiling/cavity	0.7	0.7	0.5	0.5	0.3	0.7	0.7	0.5	0.5	0.3		
walls	0.5	0.3	0.5	0.3	0.3	0.5	0.3	0.5	0.3	0.3		
working plane	0.2	0.2	0.2	0.2	0.2	0.2	0.2	0.2	0.2	0.2		
Room dimensions	Viewed crosswise					Viewed endwise						
x = 2H y = 2H	21.9	23.3	22.5	23.8	24.4	19.5	20.9	20.1	21.4	22.0		
	3H	24.7	25.9	25.3	26.5	27.1	21.0	22.2	21.5	22.8	23.4	
	4H	26.2	27.4	26.8	28.0	28.7	21.5	22.7	22.1	23.3	24.0	
	6H	27.9	29.0	28.5	29.6	30.3	21.8	22.9	22.5	23.6	24.3	
	8H	28.9	29.9	29.5	30.5	31.3	21.9	23.0	22.6	23.6	24.3	
	12H	29.9	31.0	30.6	31.6	32.3	22.0	23.0	22.6	23.6	24.4	
	4H	2H	22.5	23.6	23.1	24.2	24.9	20.7	21.9	21.3	22.5	23.2
	3H	25.5	26.5	26.1	27.1	27.9	22.5	23.5	23.1	24.2	24.9	
	4H	27.2	28.1	27.9	28.8	29.6	23.3	24.2	23.9	24.9	25.6	
	6H	29.1	30.0	29.8	30.6	31.5	23.9	24.7	24.6	25.4	26.2	
	8H	30.2	31.0	30.9	31.7	32.5	24.1	24.8	24.8	25.5	26.4	
	12H	31.4	32.1	32.1	32.9	33.7	24.2	24.9	24.9	25.6	26.5	
8H	4H	27.5	28.3	28.2	29.0	29.8	24.5	25.3	25.2	26.0	26.8	
6H	29.8	30.4	30.5	31.2	32.0	25.5	26.2	26.2	26.9	27.8		
8H	31.1	31.7	31.8	32.4	33.3	26.0	26.6	26.7	27.3	28.2		
12H	32.6	33.1	33.3	33.8	34.7	26.3	26.8	27.1	27.6	28.5		
12H	4H	27.6	28.3	28.3	29.0	29.8	24.9	25.6	25.6	26.3	27.2	
6H	29.9	30.5	30.6	31.2	32.1	26.2	26.8	26.9	27.5	28.4		
8H	31.3	31.8	32.1	32.6	33.5	26.8	27.4	27.6	28.1	29.0		
Variations with the observer position at spacings:												
S = 1.0H	+ 0.1 / - 0.1					+ 0.1 / - 0.1						
1.5H	+ 0.2 / - 0.3					+ 0.2 / - 0.3						
2.0H	+ 0.2 / - 0.3					+ 0.2 / - 0.4						

CIE Pub.117, 221.4 lm Total Lamp Luminous Flux Correct (8log(F/F0) = -5.2)

C Range: 0 - 360DEG
C Interval: 30.0DEG
Test Speed: HIGH
Temperature:25.3DEG
Operators:LPC
Test Date:2021-12-07

γ Range: 0 - 180DEG
γ Interval: 1.0DEG
Test System:EVERFINE GO-2000B_V1 SYSTEM V2.0.362
Humidity:65.0%
Test Distance:9.200m [K=1.0000]
Remarks:

UTILIZATION FACTORS TABLE

Test:U:24.00V I:0.4235A P:10.16W PF:1.000 Freq:50.00Hz Lamp Flux:221.44x1 lm		
NAME: SF21-24V-2835-72-CC-3500-80	TYPE: 硅胶	WEIGHT:
SPEC.:	DIM.: 28mm*11.5mm	SERIAL No.:2021120704
MFR.: OLYMPIA	SUR.:1*0.016	Shielding Angle:

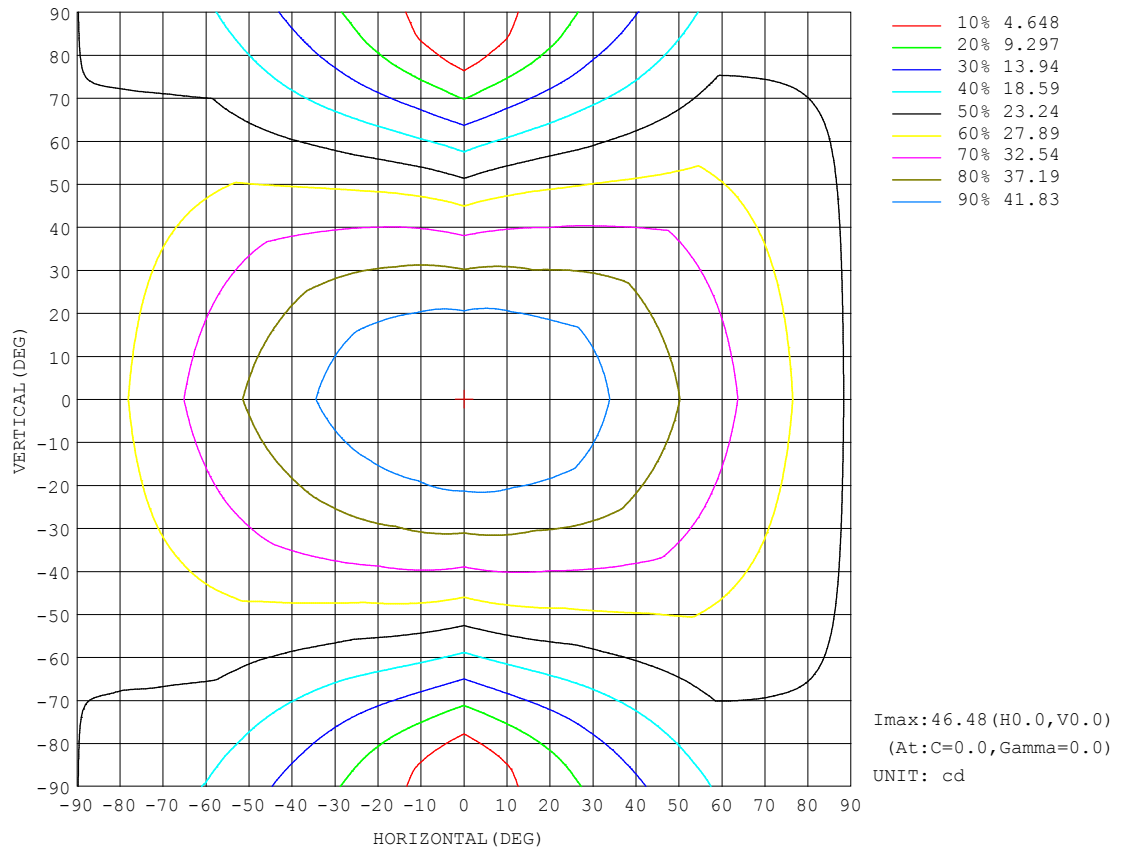
REFLECTANCE										
Ceiling	0.8	0.8	0.8	0.7	0.7	0.7	0.5	0.5	0.5	0
Walls	0.7	0.5	0.3	0.7	0.5	0.3	0.7	0.5	0.3	0
Working plane	0.2	0.2	0.2	0.2	0.2	0.2	0.2	0.2	0.2	0
ROOM INDEX	UTILIZATION FACTORS (PERCENT) $k(RI) \times RCR = 5$									
$k = 0.60$	47	34	27	46	34	27	44	33	26	20
0.80	56	43	35	54	42	34	51	40	33	25
1.00	64	51	42	62	49	42	58	50	40	31
1.25	70	58	49	68	56	48	63	53	46	36
1.50	76	63	55	73	61	53	67	58	51	40
2.00	83	72	63	80	69	62	73	65	59	46
2.50	87	77	69	84	74	67	77	69	63	50
3.00	91	82	74	87	79	72	80	73	68	53
4.00	96	88	81	92	84	78	84	78	73	58
5.00	99	92	86	94	88	83	86	81	77	61
ROOM INDEX	UF (total)									Direct
According to DIN EN 13032-2 2004			Suspended					SHRNOM = 1.25		

C Range: 0 - 360DEG
C Interval: 30.0DEG
Test Speed: HIGH
Temperature:25.3DEG
Operators:LPC
Test Date:2021-12-07

γ Range: 0 - 180DEG
 γ Interval: 1.0DEG
Test System:EVERFINE GO-2000B_V1 SYSTEM V2.0.362
Humidity:65.0%
Test Distance:9.200m [K=1.0000]
Remarks:

ISOCANDELA DIAGRAM

Test:U:24.00V I:0.4235A P:10.16W PF:1.000 Freq:50.00Hz Lamp Flux:221.44x1 lm		
NAME: SF21-24V-2835-72-CC-3500-80	TYPE: 硅胶	WEIGHT:
SPEC.:	DIM.: 28mm*11.5mm	SERIAL No.:2021120704
MFR.: OLYMPIA	SUR.:1*0.016	Shielding Angle:

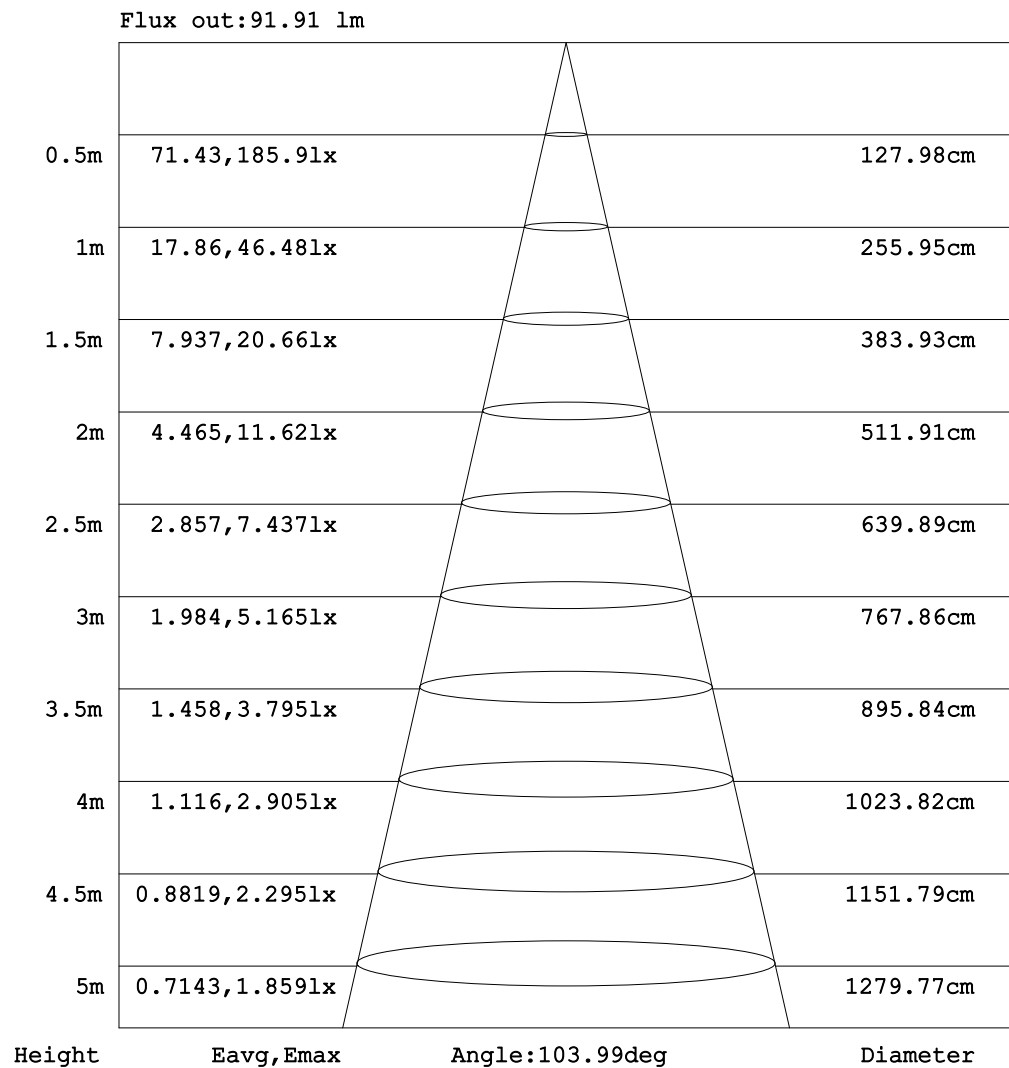


C Range: 0 - 360DEG
C Interval: 30.0DEG
Test Speed: HIGH
Temperature:25.3DEG
Operators:LPC
Test Date:2021-12-07

γ Range: 0 - 180DEG
 γ Interval: 1.0DEG
Test System:EVERFINE GO-2000B_V1 SYSTEM V2.0.362
Humidity:65.0%
Test Distance:9.200m [K=1.0000]
Remarks:

AAI Figure

Test:U:24.00V I:0.4235A P:10.16W PF:1.000 Freq:50.00Hz Lamp Flux:221.44x1 lm		
NAME: SF21-24V-2835-72-CC-3500-80	TYPE: 硅胶	WEIGHT:
SPEC.:	DIM.: 28mm*11.5mm	SERIAL No.:2021120704
MFR.: OLYMPIA	SUR.:1*0.016	Shielding Angle:



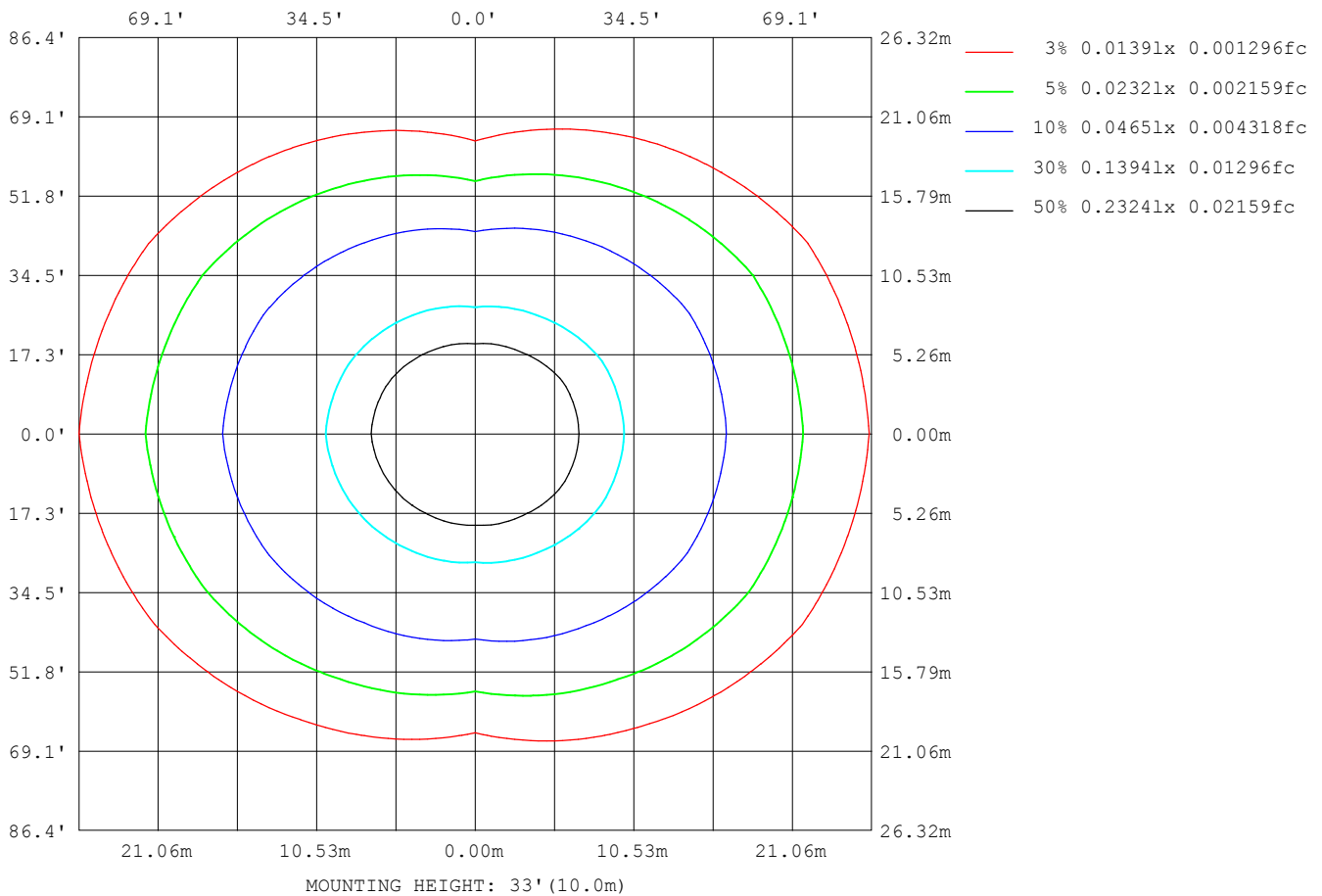
Note:The Curves indicate the illuminated area and the average illumination when the luminaire is at different distance.

C Range: 0 - 360DEG
 C Interval: 30.0DEG
 Test Speed: HIGH
 Temperature:25.3DEG
 Operators:LPC
 Test Date:2021-12-07

γ Range: 0 - 180DEG
 γ Interval: 1.0DEG
 Test System:EVERFINE GO-2000B_V1 SYSTEM V2.0.362
 Humidity:65.0%
 Test Distance:9.200m [K=1.0000]
 Remarks:

ISOLUX DIAGRAM

Test:U:24.00V I:0.4235A P:10.16W PF:1.000 Freq:50.00Hz Lamp Flux:221.44x1 lm		
NAME: SF21-24V-2835-72-CC-3500-80	TYPE: 硅胶	WEIGHT:
SPEC.:	DIM.: 28mm*11.5mm	SERIAL No.:2021120704
MFR.: OLYMPIA	SUR.:1*0.016	Shielding Angle:



C Range: 0 - 360DEG
C Interval: 30.0DEG
Test Speed: HIGH
Temperature:25.3DEG
Operators:LPC
Test Date:2021-12-07

γ Range: 0 - 180DEG
 γ Interval: 1.0DEG
Test System:EVERFINE GO-2000B_V1 SYSTEM V2.0.362
Humidity:65.0%
Test Distance:9.200m [K=1.0000]
Remarks:

LED Avg.L Report

Test:U:24.00V I:0.4235A P:10.16W PF:1.000 Freq:50.00Hz Lamp Flux:221.44x1 lm		
NAME: SF21-24V-2835-72-CC-3500-80	TYPE:硅胶	WEIGHT:
SPEC.:	DIM.: 28mm*11.5mm	SERIAL No.:2021120704
MFR.: OLYMPIA	SUR.:1*0.016	Shielding Angle:

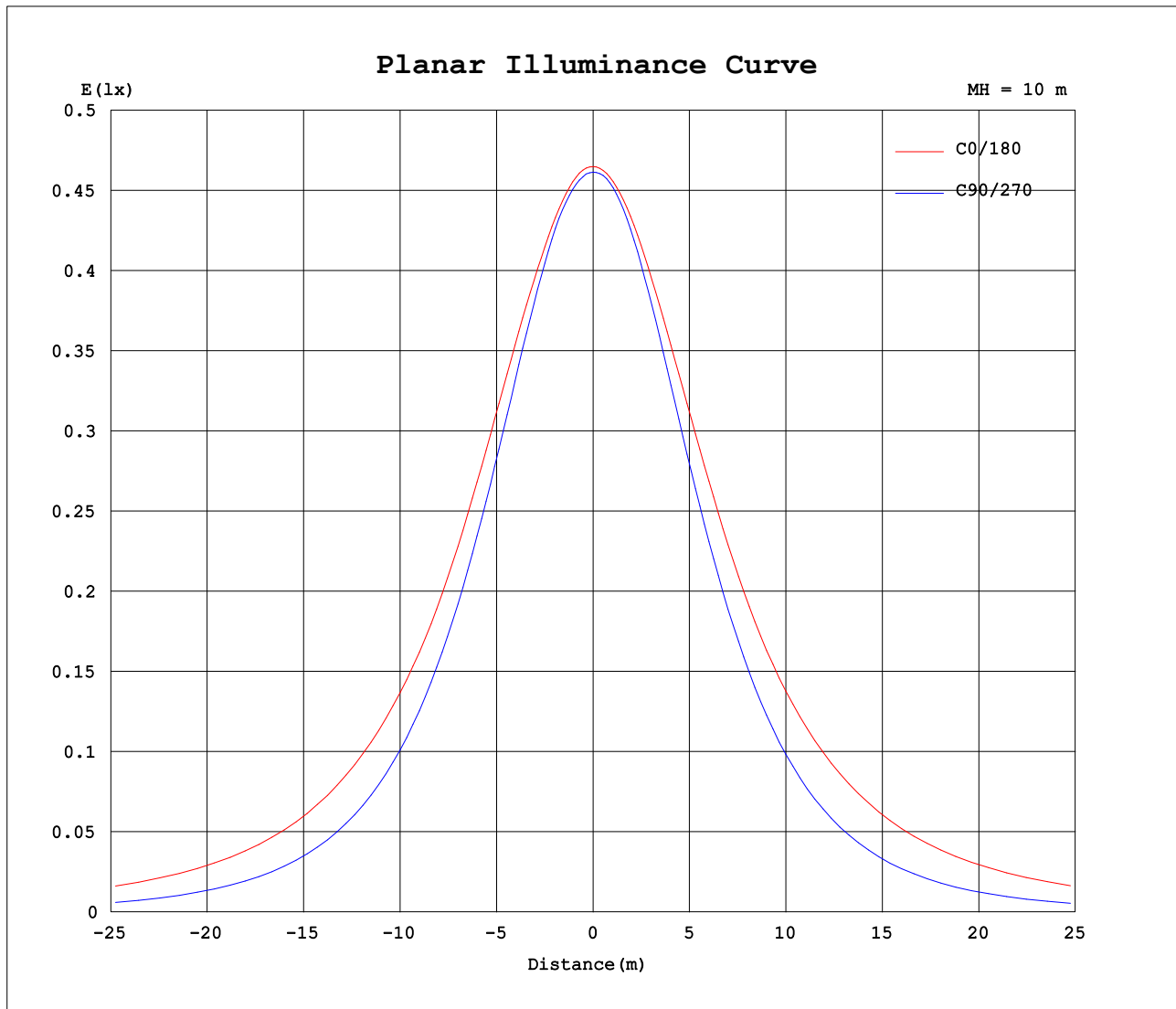
AvgL	cd/m2
L_0~180 (65) av	4782
L_0~180 (75) av	6939
L_0~180 (85) av	17878
L_90~270 (65) av	1983
L_90~270 (75) av	1460
L_90~270 (85) av	585
L_45 (65) av	3717
L_45 (75) av	5003
L_45 (85) av	12098

Standard: GB/T 29293-2012

C Range: 0 - 360DEG
 C Interval: 30.0DEG
 Test Speed: HIGH
 Temperature:25.3DEG
 Operators:LPC
 Test Date:2021-12-07

γ Range: 0 - 180DEG
 γ Interval: 1.0DEG
 Test System:EVERFINE GO-2000B_V1 SYSTEM V2.0.362
 Humidity:65.0%
 Test Distance:9.200m [K=1.0000]
 Remarks:

Planar Illuminance Curve



C Range: 0 - 360DEG
C Interval: 30.0DEG
Test Speed: HIGH
Temperature: 25.3DEG
Operators: LPC
Test Date: 2021-12-07

γ Range: 0 - 180DEG
 γ Interval: 1.0DEG
Test System: EVERFINE GO-2000B_V1 SYSTEM V2.0.362
Humidity: 65.0%
Test Distance: 9.200m [K=1.0000]
Remarks:

LUMINOUS DISTRIBUTION INTENSITY DATA

Test:U:24.00V I:0.4235A P:10.16W PF:1.000 Freq:50.00Hz Lamp Flux:221.44x1 lm		
NAME: SF21-24V-2835-72-CC-3500-80	TYPE: 硅胶	WEIGHT:
SPEC.:	DIM.: 28mm*11.5mm	SERIAL No.:2021120704
MFR.: OLYMPIA	SUR.:1*0.016	Shielding Angle:

Table--1

UNIT: cd

C (DEG) γ (DEG)	0	30	60	90	120	150	180	210	240	270	300	330						
0	46.5	46.4	46.3	46.1	46.1	46.1	46.5	46.4	46.3	46.1	46.1	46.1						
5	46.4	46.3	46.2	45.9	45.8	45.7	46.4	46.3	46.0	46.0	46.0	46.0						
10	45.9	45.8	45.6	45.3	45.1	45.1	46.0	45.8	45.4	45.3	45.5	45.9						
15	45.3	45.1	44.5	44.0	43.9	44.3	45.4	45.0	44.3	43.9	44.5	45.2						
20	44.7	44.2	43.0	42.4	42.4	43.3	44.6	44.0	42.8	42.1	43.0	44.2						
25	43.9	43.1	41.2	40.3	40.6	42.2	43.9	42.9	41.1	39.8	41.1	43.1						
30	42.8	41.9	39.1	37.8	38.6	40.8	42.9	41.7	39.1	37.3	38.9	42.1						
35	41.5	40.4	36.9	35.0	36.4	39.1	41.7	40.2	36.9	34.4	36.6	40.8						
40	40.0	38.6	34.5	31.9	34.0	37.4	40.3	38.4	34.6	31.2	34.4	39.2						
45	38.7	36.7	32.0	28.6	31.4	35.6	39.0	36.6	32.0	27.8	32.1	37.4						
50	37.3	35.0	29.4	25.1	28.6	33.8	37.6	34.8	29.3	24.3	29.6	35.6						
55	35.6	33.1	26.6	21.5	25.8	31.9	36.1	32.9	26.4	20.5	26.9	33.8						
60	33.8	31.1	23.7	17.8	23.0	29.9	34.4	31.0	23.5	16.7	24.1	31.9						
65	32.1	29.0	21.0	14.0	20.3	27.9	32.6	28.9	20.8	12.8	21.3	29.9						
70	30.3	27.0	18.3	10.2	17.6	25.9	30.8	26.9	18.1	9.07	18.7	28.0						
75	28.4	25.1	15.8	6.57	15.1	24.0	29.0	25.0	15.5	5.51	16.2	26.1						
80	26.6	23.2	13.6	3.35	13.0	22.2	27.2	23.1	13.2	2.51	14.0	24.2						
85	24.6	21.3	11.7	1.06	11.2	20.3	25.3	21.2	11.4	0.57	12.0	22.3						
90	22.6	19.4	10.2	0.67	9.68	18.4	23.3	19.4	9.78	0.44	10.4	20.5						
95	20.6	17.6	8.93	0.68	8.53	16.8	21.3	17.6	8.57	0.45	9.13	18.6						
100	18.4	14.4	8.05	0.73	7.74	13.9	19.1	14.7	7.72	0.49	8.18	15.4						
105	16.7	13.6	6.78	0.76	5.77	13.1	17.3	13.8	5.98	0.55	6.91	14.5						
110	15.2	12.5	6.68	0.78	5.57	12.2	15.7	12.6	5.67	0.56	6.70	13.3						
115	13.9	11.6	6.09	0.82	5.08	10.5	13.8	11.3	5.20	0.59	5.90	12.3						
120	12.7	10.8	5.27	0.84	4.82	9.70	12.5	10.2	5.06	0.62	5.49	11.3						
125	11.6	9.93	4.23	0.87	4.70	8.97	11.4	9.27	4.87	0.66	4.96	10.1						
130	10.5	8.78	3.60	0.90	4.34	8.17	10.4	8.46	4.63	0.70	4.41	8.83						
135	9.48	7.16	3.38	0.93	4.25	7.32	9.37	7.70	4.40	0.76	3.83	7.81						
140	8.46	5.55	3.14	0.96	3.94	6.60	7.58	6.95	4.15	0.78	3.37	6.20						
145	7.30	4.37	2.86	0.99	3.55	5.80	7.32	6.26	3.83	0.83	3.03	5.22						
150	6.13	3.53	2.56	1.07	3.27	5.16	6.43	5.56	3.62	0.93	2.69	4.50						
155	5.18	3.10	2.56	1.08	2.99	4.47	5.59	4.92	3.25	0.94	2.65	3.76						
160	4.40	2.62	2.55	1.10	2.57	3.75	4.62	4.24	2.86	1.00	2.63	3.02						
165	3.66	2.25	2.47	1.10	2.10	3.13	3.82	3.60	2.44	1.01	2.46	2.65						
170	1.97	2.16	2.25	1.09	1.72	2.39	1.99	2.85	2.01	1.02	2.36	2.55						
175	1.59	1.82	1.74	1.09	1.14	1.61	1.61	2.20	1.67	1.03	1.95	2.31						
180	1.15	1.19	1.12	1.09	1.11	1.11	1.15	1.19	1.12	1.07	1.10	1.13						

C Range: 0 - 360DEG
C Interval: 30.0DEG
Test Speed: HIGH
Temperature:25.3DEG
Operators:LPC
Test Date:2021-12-07

γ Range: 0 - 180DEG
γ Interval: 1.0DEG
Test System:EVERFINE GO-2000B_V1 SYSTEM V2.0.362
Humidity:65.0%
Test Distance:9.200m [K=1.0000]
Remarks:

Photometric Data Table [cd]

G/C	0.0	30.0	60.0	90.0	120.0	150.0	180.0	210.0	240.0	270.0
0.0	46.48	46.38	46.26	46.14	46.11	46.06	46.48	46.38	46.26	46.14
3.0	46.47	46.34	46.26	46.05	45.98	45.89	46.44	46.37	46.18	46.13
6.0	46.29	46.18	46.07	45.82	45.69	45.62	46.30	46.18	45.94	45.92
9.0	46.02	45.91	45.74	45.44	45.28	45.26	46.06	45.90	45.58	45.47
12.0	45.68	45.54	45.27	44.85	44.69	44.80	45.76	45.51	45.01	44.77
15.0	45.30	45.09	44.53	44.03	43.92	44.28	45.38	45.03	44.28	43.90
18.0	44.93	44.57	43.68	43.03	43.04	43.72	44.95	44.46	43.41	42.91
21.0	44.51	44.02	42.71	41.98	42.05	43.09	44.50	43.82	42.49	41.64
24.0	44.04	43.36	41.60	40.69	40.96	42.44	44.03	43.15	41.43	40.35
27.0	43.47	42.64	40.41	39.28	39.82	41.65	43.50	42.45	40.30	38.83
30.0	42.81	41.85	39.13	37.78	38.59	40.80	42.89	41.67	39.10	37.27
33.0	42.07	40.97	37.77	36.13	37.30	39.84	42.21	40.78	37.82	35.61
36.0	41.22	40.01	36.40	34.37	35.94	38.79	41.42	39.82	36.48	33.76
39.0	40.29	38.98	34.99	32.53	34.50	37.71	40.58	38.76	35.06	31.86
42.0	39.49	37.85	33.52	30.62	32.99	36.68	39.77	37.66	33.59	29.93
45.0	38.73	36.67	32.02	28.61	31.42	35.62	38.96	36.59	32.03	27.82
48.0	37.86	35.61	30.44	26.57	29.77	34.55	38.18	35.50	30.40	25.69
51.0	36.94	34.59	28.81	24.43	28.08	33.46	37.32	34.45	28.72	23.52
54.0	35.93	33.46	27.14	22.22	26.35	32.30	36.38	33.35	26.99	21.32
57.0	34.88	32.25	25.43	20.03	24.66	31.08	35.40	32.17	25.25	18.96
60.0	33.83	31.06	23.67	17.77	22.99	29.89	34.35	30.96	23.53	16.69
63.0	32.78	29.79	22.03	15.49	21.36	28.66	33.29	29.72	21.88	14.42
66.0	31.73	28.61	20.43	13.22	19.73	27.45	32.25	28.50	20.23	12.06
69.0	30.64	27.40	18.86	10.93	18.12	26.34	31.18	27.31	18.59	9.847
72.0	29.56	26.23	17.29	8.688	16.58	25.15	30.10	26.14	16.99	7.686
75.0	28.44	25.06	15.80	6.573	15.14	24.04	29.03	24.98	15.48	5.514
78.0	27.31	23.92	14.43	4.538	13.79	22.90	27.91	23.83	14.09	3.574
81.0	26.17	22.79	13.18	2.815	12.60	21.77	26.81	22.71	12.83	2.059
84.0	24.99	21.63	12.05	1.434	11.53	20.69	25.65	21.61	11.71	0.7274
87.0	23.78	20.52	11.06	0.7484	10.55	19.53	24.50	20.48	10.71	0.4578
90.0	22.56	19.38	10.17	0.6734	9.678	18.43	23.28	19.35	9.782	0.4352
93.0	21.38	18.24	9.375	0.6585	8.948	17.40	22.11	18.27	9.014	0.4394
96.0	20.22	17.24	8.727	0.6785	8.345	16.44	20.96	17.25	8.371	0.4494
99.0	19.11	15.20	8.199	0.7188	7.867	14.12	19.63	14.96	7.864	0.4622
102.0	17.71	14.21	7.736	0.7441	7.351	13.66	18.37	14.38	7.456	0.5376
105.0	16.73	13.58	6.781	0.7592	5.772	13.12	17.31	13.78	5.981	0.5464
108.0	15.79	12.98	6.735	0.7742	5.604	12.53	16.33	13.08	5.899	0.5552
111.0	14.92	12.33	6.416	0.7892	5.509	11.63	15.40	12.22	5.578	0.5640
114.0	14.12	11.80	6.066	0.8042	5.173	10.78	14.20	11.56	5.276	0.5728
117.0	13.38	11.27	5.995	0.8292	4.981	10.15	13.25	10.83	5.116	0.6070
120.0	12.69	10.76	5.266	0.8394	4.820	9.704	12.50	10.21	5.060	0.6191
123.0	12.02	10.29	4.636	0.8595	4.683	9.276	11.81	9.626	4.960	0.6382
126.0	11.39	9.764	4.087	0.8776	4.664	8.834	11.18	9.103	4.814	0.6734
129.0	10.75	9.198	3.700	0.8897	4.354	8.316	10.56	8.591	4.678	0.6835
132.0	10.11	8.109	3.473	0.9197	4.303	7.869	9.959	8.183	4.538	0.7186
135.0	9.481	7.163	3.383	0.9298	4.252	7.320	9.366	7.696	4.402	0.7587
138.0	8.867	5.989	3.242	0.9449	4.112	6.779	8.702	7.213	4.231	0.7738
141.0	8.255	5.244	3.076	0.9650	3.871	6.467	7.034	6.821	4.065	0.7940
144.0	7.542	4.537	2.921	0.9801	3.624	5.979	7.472	6.384	3.899	0.8291
147.0	6.808	4.004	2.740	1.005	3.448	5.572	6.898	5.997	3.738	0.8493
150.0	6.134	3.532	2.559	1.073	3.267	5.160	6.426	5.565	3.618	0.9296
153.0	5.546	3.246	2.522	1.080	3.117	4.768	5.928	5.178	3.376	0.9387
156.0	5.028	3.005	2.560	1.087	2.901	4.296	5.441	4.791	3.160	0.9498
159.0	4.615	2.718	2.553	1.094	2.650	3.894	4.867	4.394	2.934	0.9799
162.0	4.112	2.422	2.528	1.098	2.383	3.522	4.336	4.072	2.713	1.004
165.0	3.661	2.247	2.473	1.096	2.097	3.130	3.822	3.600	2.442	1.009
168.0	2.097	2.226	2.348	1.095	1.885	2.703	2.165	2.936	2.155	1.015
171.0	1.900	2.115	2.192	1.093	1.634	2.175	1.899	2.765	1.919	1.019
174.0	1.660	1.899	1.946	1.092	1.178	1.768	1.678	2.368	1.733	1.030
177.0	1.448	1.437	1.463	1.091	1.126	1.111	1.502	1.936	1.340	1.040
180.0	1.146	1.186	1.116	1.091	1.111	1.106	1.146	1.186	1.116	1.065
G/C	300.0	330.0								
0.0	46.11	46.06								
3.0	46.10	46.13								
6.0	45.97	46.14								
9.0	45.67	45.97								
12.0	45.15	45.68								
15.0	44.46	45.23								
18.0	43.61	44.65								
21.0	42.62	43.99								
24.0	41.48	43.34								
27.0	40.23	42.74								
30.0	38.90	42.08								

C Range: 0 - 360DEG
 C Interval: 30.0DEG
 Test Speed: HIGH
 Temperature: 25.3DEG
 Operators: LPC
 Test Date: 2021-12-07

γ Range: 0 - 180DEG
 γ Interval: 1.0DEG
 Test System: EVERFINE GO-2000B_V1 SYSTEM V2.0.362
 Humidity: 65.0%
 Test Distance: 9.200m [K=1.0000]
 Remarks:

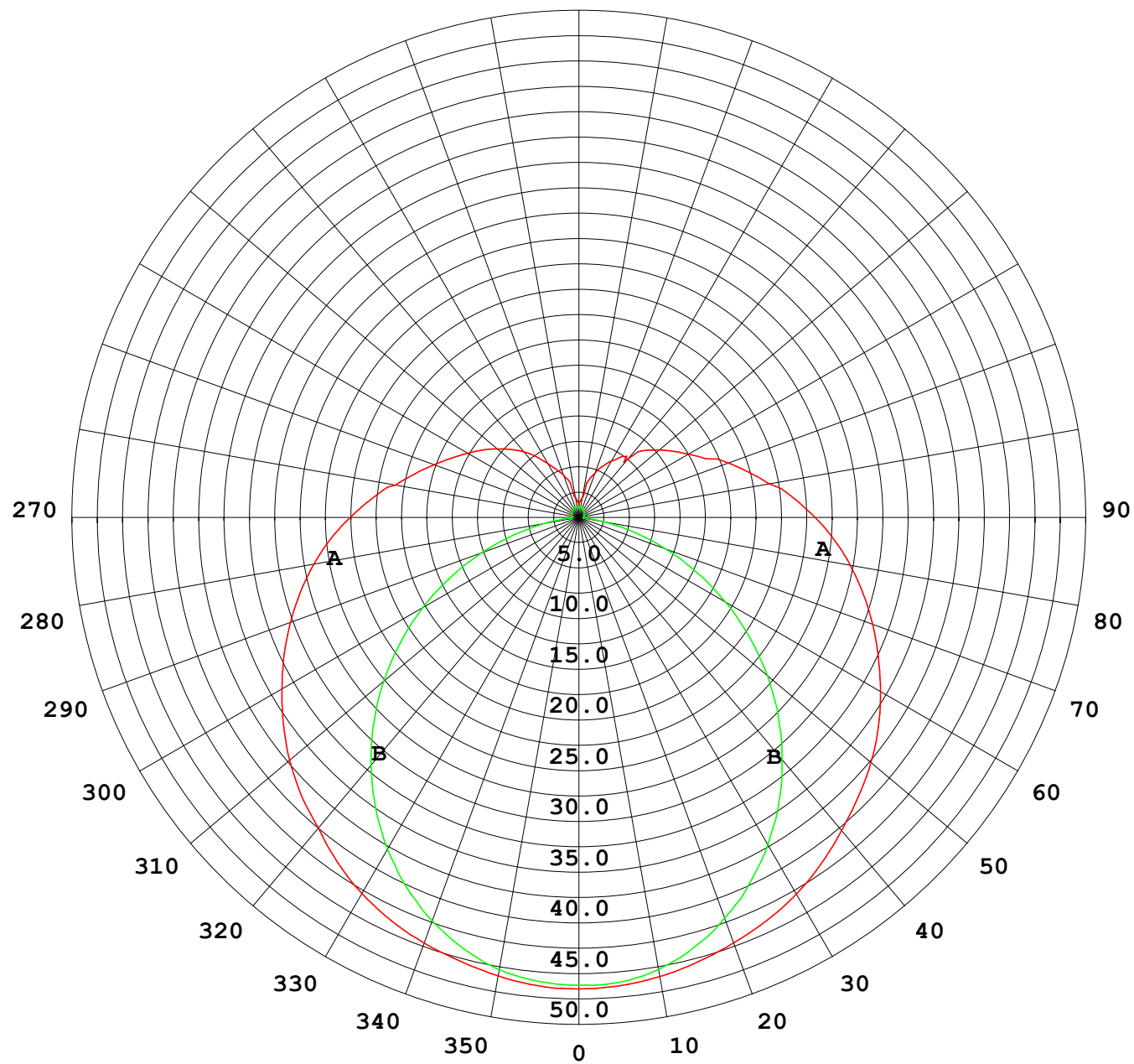
Photometric Data Table [cd]

33.0	37.52	41.34
36.0	36.16	40.49
39.0	34.81	39.55
42.0	33.45	38.51
45.0	32.07	37.41
48.0	30.64	36.24
51.0	29.08	35.22
54.0	27.45	34.21
57.0	25.79	33.10
60.0	24.08	31.95
63.0	22.37	30.75
66.0	20.82	29.53
69.0	19.25	28.36
72.0	17.69	27.23
75.0	16.20	26.08
78.0	14.80	24.93
81.0	13.53	23.81
84.0	12.38	22.68
87.0	11.35	21.55
90.0	10.44	20.45
93.0	9.606	19.33
96.0	8.913	18.25
99.0	8.336	16.41
102.0	7.867	15.12
105.0	6.909	14.46
108.0	6.769	13.78
111.0	6.661	13.11
114.0	6.377	12.46
117.0	5.764	11.88
120.0	5.491	11.30
123.0	5.170	10.57
126.0	4.843	9.797
129.0	4.522	9.094
132.0	4.200	8.430
135.0	3.829	7.811
138.0	3.532	6.748
141.0	3.311	6.087
144.0	3.080	5.445
147.0	2.914	4.952
150.0	2.693	4.499
153.0	2.653	4.067
156.0	2.653	3.610
159.0	2.638	3.188
162.0	2.563	2.835
165.0	2.457	2.649
168.0	2.412	2.598
171.0	2.311	2.523
174.0	2.139	2.383
177.0	1.487	2.047
180.0	1.101	1.126

C Range: 0 - 360DEG
C Interval: 30.0DEG
Test Speed: HIGH
Temperature:25.3DEG
Operators:LPC
Test Date:2021-12-07

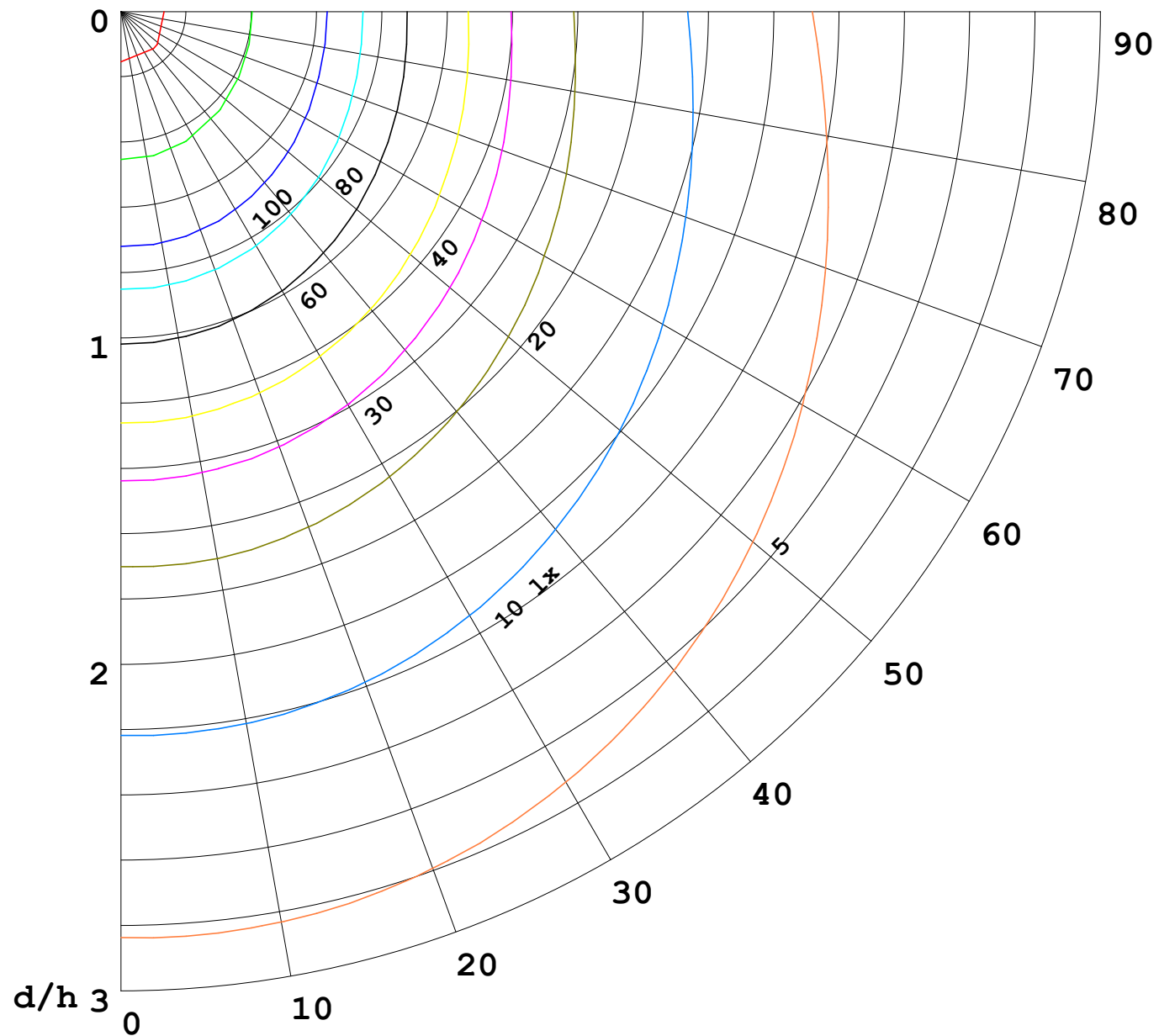
γ Range: 0 - 180DEG
γ Interval: 1.0DEG
Test System:EVERFINE GO-2000B_V1 SYSTEM V2.0.362
Humidity:65.0%
Test Distance:9.200m [K=1.0000]
Remarks:

I (cd)



1000 lm

$\kappa = 1$



F = 5000 lm
 K = 0.7
 Hcc = 0.0 m
 Hfc = 0.0 m
 Eave = 100 lx

	Pcc	Pw	Pfc
—	70	50	30
—	50	30	20

