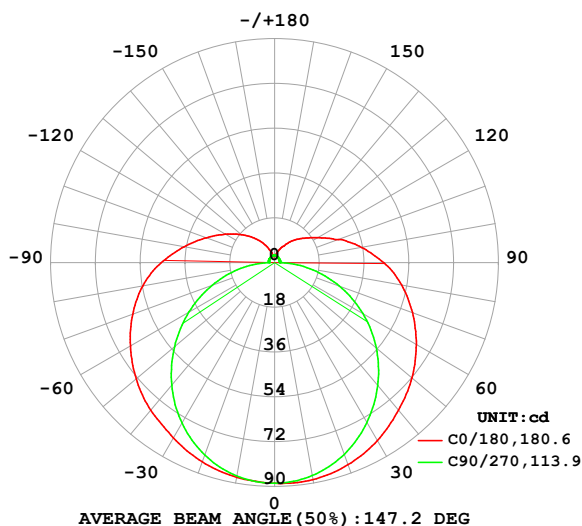


LUMINAIRE PHOTOMETRIC TEST REPORT

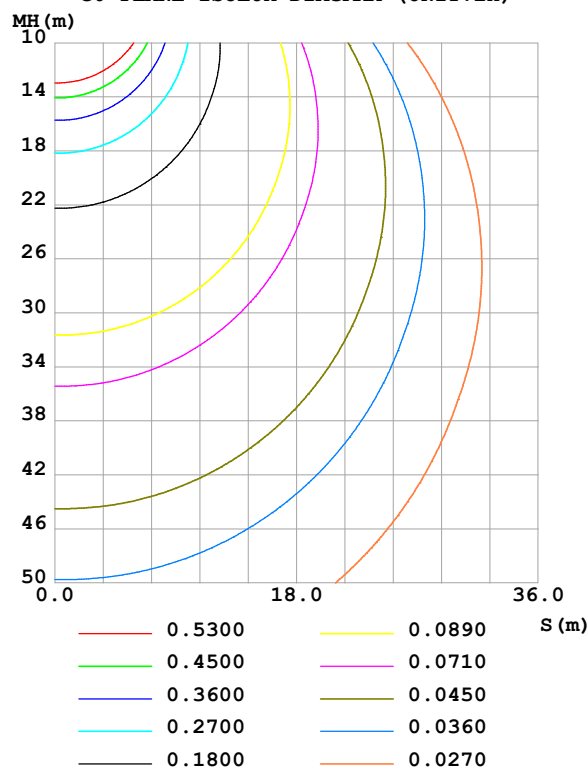
Test:U:24.00V I:0.4761A P:11.43W PF:1.000 Freq:0Hz Lamp Flux:433.332x1 lm		
NAME: SF21-24V-5050-60-5000-80	TYPE:	WEIGHT:
SPEC.:	DIM.: Length=1m	SERIAL No.:
MFR.:	SUR.:	Shielding Angle:

DATA OF LAMP		PHOTOMETRIC DATA				Eff: 37.92 lm/W
MODEL		I _{max} (cd)	88.85	S/MH(C0/180)	1.38	
NOMINAL POWER(W)		LOR(%)	100.0	S/MH(C90/270)	1.25	
RATED VOLTAGE(V)		TOTAL FLUX(lm)	433.33	η UP,DN(C0-180)	9.7,40.1	
NOMINAL FLUX(lm)	433.332	CIE CLASS	SEMI-D.	η UP,DN(C180-360)	9.9,40.3	
LAMPS INSIDE	1	η up (%)	19.6	CIBSE SHR NOM	1.50	
TEST VOLTAGE(V)		η down (%)	80.4	CIBSE SHR MAX	1.55	

LUMINOUS INTENSITY DISTRIBUTION DIAGRAM



C0 PLANE ISOLUX DIAGRAM (UNIT:lx)



C Range: 0 - 360DEG
C Interval: 22.5DEG
Test Speed: HIGH
Temperature:25.3℃
Operators:Cloud
Test Date:2024-10-30

γ Range: 0 - 180DEG
γ Interval: 1.0DEG
Test System:EVERFINE GO-2000B_V1 SYSTEM V2.00.488
Humidity:65.0%
Test Distance:6.360m [K=1.0000]
Remarks:

ZONAL FLUX DIAGRAM

ZONAL FLUX DIAGRAM:

γ	C0	C45	C90	C135	C180	C225	C270	C315	γ	Φ zone	Φ total	%lum, lamp
10	88.55	87.98	86.94	87.10	87.62	87.27	87.13	88.07	0- 10	8.414	8.414	1.94,1.94
20	86.43	84.68	81.99	83.40	85.24	83.77	82.28	84.92	10- 20	24.33	32.75	7.56,7.56
30	82.60	79.06	74.23	77.61	81.37	78.11	74.52	79.34	20- 30	37.60	70.34	16.2,16.2
40	77.45	71.57	64.53	70.14	77.46	70.79	64.37	71.92	30- 40	46.91	117.3	27.1,27.1
50	72.09	62.83	53.39	62.82	72.67	63.52	52.53	63.19	40- 50	51.86	169.1	39,39
60	65.79	54.08	40.98	54.53	66.94	55.29	39.82	54.50	50- 60	52.40	221.5	51.1,51.1
70	59.02	45.54	27.75	46.09	60.75	46.93	26.79	45.86	60- 70	49.07	270.6	62.4,62.4
80	51.85	37.66	14.47	38.23	53.75	39.13	13.96	37.99	70- 80	42.90	313.5	72.3,72.3
90	43.86	30.15	2.280	30.36	45.53	31.23	2.279	30.56	80- 90	34.91	348.4	80.4,80.4
100	35.53	23.32	2.079	23.32	36.98	24.08	2.525	23.75	90-100	26.87	375.3	86.6,86.6
110	27.38	15.94	2.189	18.01	29.30	18.65	2.586	14.64	100-110	19.88	395.1	91.2,91.2
120	20.06	11.83	2.212	14.10	22.90	14.61	2.695	11.74	110-120	14.18	409.3	94.5,94.5
130	15.29	8.759	2.276	10.83	17.59	11.23	2.724	9.494	120-130	10.03	419.4	96.8,96.8
140	11.66	6.739	2.319	7.758	12.99	8.132	2.785	6.843	130-140	6.679	426.0	98.3,98.3
150	7.832	5.000	2.572	5.173	8.739	5.411	2.886	5.030	140-150	3.964	430.0	99.2,99.2
160	5.486	4.020	2.727	3.289	5.074	3.365	2.993	3.700	150-160	2.088	432.1	99.7,99.7
170	2.943	3.182	2.863	2.958	2.571	2.965	3.002	3.247	160-170	0.9531	433.0	99.9,99.9
180	2.631	2.985	2.978	3.094	2.623	2.994	2.984	3.097	170-180	0.2846	433.3	100,100
DEG	LUMINOUS INTENSITY:cd									UNIT:lm		

Conical surface Flux(90deg): 142.85 lm

%lum = 33.0%

%lamp = 33.0%

Conical surface Flux(130deg): 246.67 lm

%lum = 56.9%

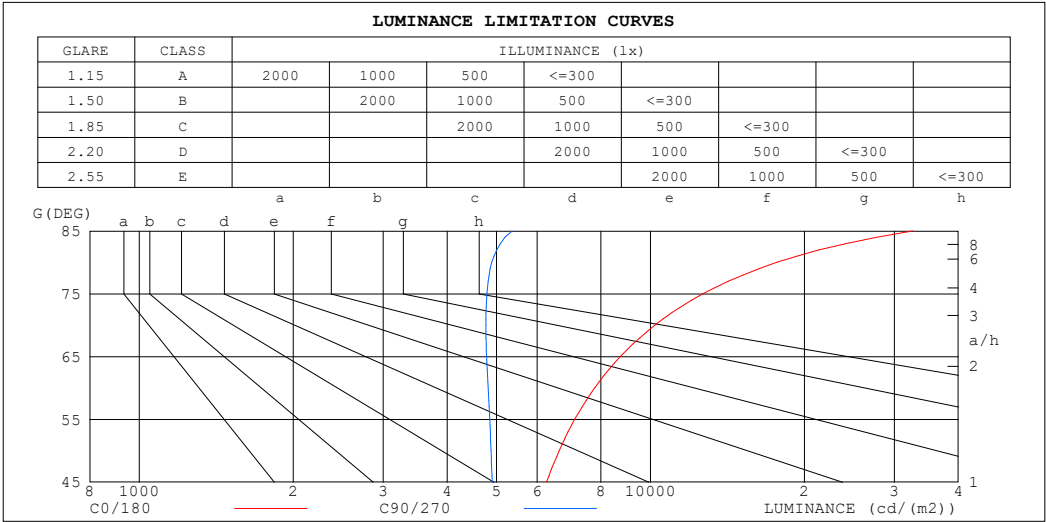
%lamp = 56.9%

C Range: 0 - 360DEG
 C Interval: 22.5DEG
 Test Speed: HIGH
 Temperature:25.3℃
 Operators:Cloud
 Test Date:2024-10-30

γ Range: 0 - 180DEG
 γ Interval: 1.0DEG
 Test System:EVERFINE GO-2000B_V1 SYSTEM V2.00.488
 Humidity:65.0%
 Test Distance:6.360m [K=1.0000]
 Remarks:

LUMINANCE LIMITATION CURVES

Test:U:24.00V I:0.4761A P:11.43W PF:1.000 Freq:0Hz Lamp Flux:433.332x1 lm		
NAME: SF21-24V-5050-60-5000-80	TYPE:	WEIGHT:
SPEC.:	DIM.: Length=1m	SERIAL No.:
MFR.:	SUR.:	Shielding Angle:



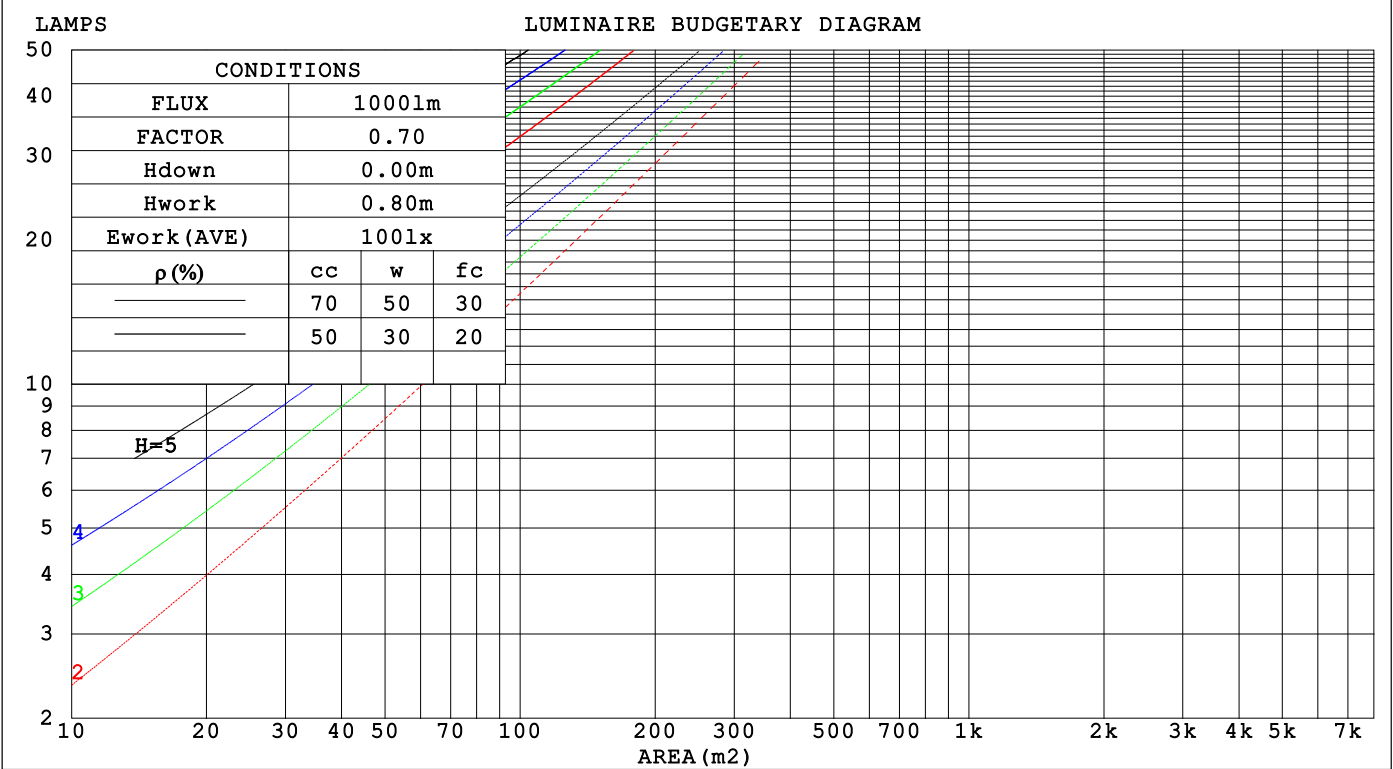
LUMINANCE cd/(m2)		
G (DEG)	C0/180	C90/270
85	32590	5364
80	17649	4893
75	12665	4785
70	10199	4764
65	8729	4781
60	7776	4812
55	7108	4846
50	6628	4876
45	6261	4906

C Range: 0 - 360DEG	γ Range: 0 - 180DEG
C Interval: 22.5DEG	γ Interval: 1.0DEG
Test Speed: HIGH	Test System:EVERFINE GO-2000B_V1 SYSTEM V2.00.488
Temperature:25.3℃	Humidity:65.0%
Operators:Cloud	Test Distance:6.360m [K=1.0000]
Test Date:2024-10-30	Remarks:

CU AND LUMINAIRE BUDGETARY ESTIMATE DIAGRAM

Test:U:24.00V I:0.4761A P:11.43W PF:1.000 Freq:0Hz																	
Lamp Flux:433.332x1 lm																	
NAME: SF21-24V-5050-60-5000-80									TYPE:						WEIGHT:		
SPEC.:									DIM.: Length=1m						SERIAL No.:		
MFR.:									SUR.:						Shielding Angle:		

pcc	80%			70%			50%			30%			10%			0
pw	50%	30%	10%	50%	30%	10%	50%	30%	10%	50%	30%	10%	50%	30%	10%	0
pfc	20%			20%			20%			20%			20%			0
RCR	RCR:Room Cavity Ratio Coefficients of Utilization(CU)															
0.0	1.14	1.14	1.14	1.09	1.09	1.09	1.00	1.00	1.00	.92	.92	.92	.84	.84	.84	.80
1.0	.95	.89	.84	.91	.86	.81	.83	.79	.75	.75	.72	.69	.69	.66	.64	.60
2.0	.81	.73	.66	.77	.70	.64	.70	.64	.59	.64	.59	.55	.58	.54	.51	.48
3.0	.70	.61	.54	.67	.59	.52	.61	.54	.48	.56	.50	.45	.51	.46	.42	.39
4.0	.61	.52	.45	.59	.50	.43	.54	.46	.40	.49	.43	.38	.45	.39	.35	.32
5.0	.54	.45	.38	.52	.43	.37	.48	.40	.34	.44	.37	.32	.40	.34	.30	.27
6.0	.49	.39	.33	.47	.38	.32	.43	.35	.30	.39	.33	.28	.36	.30	.26	.24
7.0	.44	.35	.28	.42	.34	.28	.39	.31	.26	.36	.29	.25	.33	.27	.23	.21
8.0	.40	.31	.25	.38	.30	.24	.35	.28	.23	.33	.26	.22	.30	.25	.21	.18
9.0	.36	.28	.22	.35	.27	.22	.32	.26	.21	.30	.24	.20	.28	.22	.18	.16
10.0	.33	.25	.20	.32	.25	.20	.30	.23	.19	.28	.22	.18	.26	.20	.17	.15



C Range: 0 - 360DEG
C Interval: 22.5DEG
Test Speed: HIGH
Temperature:25.3℃
Operators:Cloud
Test Date:2024-10-30

γ Range: 0 - 180DEG
γ Interval: 1.0DEG
Test System:EVERFINE GO-2000B_V1 SYSTEM V2.00.488
Humidity:65.0%
Test Distance:6.360m [K=1.0000]
Remarks:

WEC AND CCEC

Test:U:24.00V I:0.4761A P:11.43W PF:1.000 Freq:0Hz Lamp Flux:433.332x1 lm					
NAME: SF21-24V-5050-60-5000-80			TYPE:		WEIGHT:
SPEC.:			DIM.: Length=1m		SERIAL No.:
MFR.:			SUR.:		Shielding Angle:

pcc	80%			70%			50%			30%			10%			0														
pw	50%	30%	10%	50%	30%	10%	50%	30%	10%	50%	30%	10%	50%	30%	10%	0														
pfc	20%			20%			20%			20%			20%			0														
RCR	RCR:Room Cavity Ratio															Wall Exitance Coefficients(WEC)														
0.0																														
1.0	.394	.224	.071	.381	.217	.069	.356	.204	.065	.333	.192	.062	.312	.181	.058															
2.0	.338	.185	.057	.326	.180	.055	.304	.169	.053	.283	.159	.050	.264	.149	.047															
3.0	.299	.159	.048	.289	.155	.047	.268	.145	.044	.250	.137	.042	.232	.129	.040															
4.0	.269	.140	.041	.259	.136	.040	.241	.128	.038	.223	.120	.036	.208	.113	.034															
5.0	.244	.124	.036	.235	.121	.035	.218	.114	.033	.203	.107	.032	.188	.101	.030															
6.0	.223	.112	.032	.215	.109	.031	.200	.102	.030	.186	.096	.028	.172	.091	.027															
7.0	.206	.102	.029	.198	.099	.028	.184	.093	.027	.171	.088	.026	.159	.083	.024															
8.0	.190	.093	.026	.184	.090	.026	.171	.085	.024	.159	.080	.023	.147	.076	.022															
9.0	.177	.086	.024	.171	.083	.023	.159	.079	.022	.148	.074	.021	.138	.070	.020															
10.0	.166	.080	.022	.160	.077	.022	.149	.073	.021	.139	.069	.020	.129	.065	.019															

pcc	80%			70%			50%			30%			10%			0
pw	50%	30%	10%	50%	30%	10%	50%	30%	10%	50%	30%	10%	50%	30%	10%	0
pfc	20%			20%			20%			20%			20%			0
RCR	RCR:Room Cavity Ratio						Ceiling Cavity Exitance Coefficients (CCEC)									
0.0	.340	.340	.340	.290	.290	.290	.198	.198	.198	.114	.114	.114	.036	.036	.036	
1.0	.337	.306	.278	.288	.263	.240	.197	.181	.166	.113	.105	.096	.036	.034	.031	
2.0	.330	.283	.244	.283	.244	.211	.194	.169	.147	.112	.098	.086	.036	.032	.028	
3.0	.323	.267	.223	.277	.230	.193	.190	.160	.135	.110	.093	.080	.035	.030	.026	
4.0	.315	.254	.208	.270	.220	.181	.186	.153	.128	.107	.090	.075	.035	.029	.025	
5.0	.307	.245	.199	.264	.212	.173	.182	.148	.122	.105	.087	.072	.034	.028	.024	
6.0	.300	.237	.192	.257	.205	.167	.178	.144	.118	.103	.084	.070	.033	.028	.023	
7.0	.292	.230	.187	.252	.200	.163	.174	.140	.115	.101	.082	.069	.033	.027	.023	
8.0	.286	.225	.183	.246	.195	.159	.170	.137	.113	.099	.081	.067	.032	.026	.022	
9.0	.279	.220	.180	.241	.191	.157	.167	.134	.111	.097	.079	.066	.031	.026	.022	
10.0	.273	.216	.177	.236	.187	.155	.164	.132	.110	.095	.078	.066	.031	.026	.022	

C Range: 0 - 360DEG
C Interval: 22.5DEG
Test Speed: HIGH
Temperature:25.3℃
Operators:Cloud
Test Date:2024-10-30

γ Range: 0 - 180DEG
γ Interval: 1.0DEG
Test System:EVERFINE GO-2000B_V1 SYSTEM V2.00.488
Humidity:65.0%
Test Distance:6.360m [K=1.0000]
Remarks:

UGR(Unified Glare Rating) Table

Test:U:24.00V I:0.4761A P:11.43W PF:1.000 Freq:0Hz Lamp Flux:433.332x1 lm										
NAME: SF21-24V-5050-60-5000-80					TYPE:			WEIGHT:		
SPEC.:					DIM.: Length=1m			SERIAL No.:		
MFR.:					SUR.:			Shielding Angle:		
ceiling/cavity	0.7	0.7	0.5	0.5	0.3	0.7	0.7	0.5	0.5	0.3
walls	0.5	0.3	0.5	0.3	0.3	0.5	0.3	0.5	0.3	0.3
working plane	0.2	0.2	0.2	0.2	0.2	0.2	0.2	0.2	0.2	0.2
Room dimensions	Viewed crosswise					Viewed endwise				
x = 2H y = 2H	21.7	23.1	22.3	23.6	24.2	19.7	21.1	20.2	21.6	22.2
3H	24.5	25.8	25.1	26.3	27.0	21.4	22.7	22.0	23.3	23.9
4H	26.1	27.3	26.6	27.8	28.5	22.2	23.4	22.8	24.0	24.7
6H	27.8	28.9	28.4	29.5	30.2	22.9	24.1	23.5	24.7	25.4
8H	28.7	29.8	29.3	30.4	31.1	23.2	24.3	23.8	24.9	25.6
12H	29.8	30.9	30.4	31.5	32.2	23.5	24.5	24.1	25.1	25.8
4H 2H	22.3	23.5	22.9	24.1	24.7	20.8	22.0	21.4	22.6	23.3
3H	25.3	26.4	25.9	27.0	27.7	22.8	23.9	23.4	24.5	25.2
4H	27.1	28.0	27.7	28.7	29.4	23.8	24.7	24.4	25.4	26.1
6H	29.0	29.9	29.7	30.5	31.3	24.7	25.5	25.3	26.2	27.0
8H	30.1	30.9	30.8	31.6	32.4	25.0	25.9	25.7	26.5	27.3
12H	31.3	32.1	32.0	32.8	33.6	25.4	26.1	26.1	26.8	27.6
8H 4H	27.4	28.2	28.1	28.9	29.7	24.8	25.7	25.5	26.3	27.1
6H	29.7	30.4	30.4	31.1	31.9	26.1	26.8	26.8	27.5	28.3
8H	31.0	31.6	31.7	32.3	33.2	26.7	27.3	27.4	28.0	28.9
12H	32.5	33.0	33.2	33.8	34.6	27.2	27.7	27.9	28.5	29.4
12H 4H	27.5	28.2	28.2	28.9	29.7	25.2	25.9	25.9	26.6	27.4
6H	29.8	30.4	30.5	31.2	32.0	26.6	27.3	27.4	28.0	28.8
8H	31.2	31.8	32.0	32.5	33.4	27.4	27.9	28.1	28.7	29.6
Variations with the observer position at spacings(CIE Pub.117):										
S = 1.0H	+ 0.1 / - 0.1					+ 0.1 / - 0.1				
1.5H	+ 0.2 / - 0.3					+ 0.2 / - 0.3				
2.0H	+ 0.3 / - 0.4					+ 0.2 / - 0.4				

CIE Pub.117, 433.3 lm Total Lamp Luminous Flux Correct (8log(F/F0) = -2.9)
Area: 0.017 m2

C Range: 0 - 360DEG
C Interval: 22.5DEG
Test Speed: HIGH
Temperature:25.3℃
Operators:Cloud
Test Date:2024-10-30

γ Range: 0 - 180DEG
γ Interval: 1.0DEG
Test System:EVERFINE GO-2000B_V1 SYSTEM V2.00.488
Humidity:65.0%
Test Distance:6.360m [K=1.0000]
Remarks:

UTILIZATION FACTORS TABLE

Test:U:24.00V I:0.4761A P:11.43W PF:1.000 Freq:0Hz Lamp Flux:433.332x1 lm		
NAME: SF21-24V-5050-60-5000-80	TYPE:	WEIGHT:
SPEC.:	DIM.: Length=1m	SERIAL No.:
MFR.:	SUR.:	Shielding Angle:

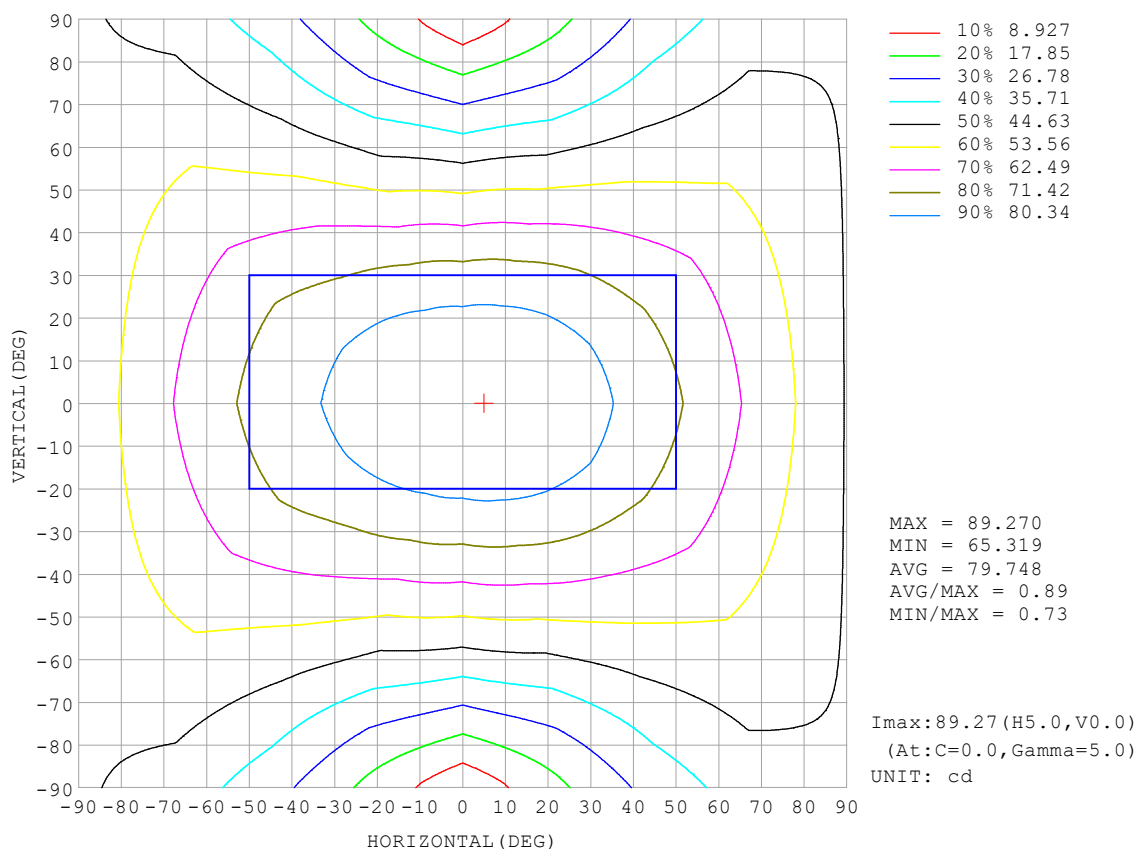
REFLECTANCE										
Ceiling	0.8	0.8	0.8	0.7	0.7	0.7	0.5	0.5	0.5	0
Walls	0.7	0.5	0.3	0.7	0.5	0.3	0.7	0.5	0.3	0
Working plane	0.2	0.2	0.2	0.2	0.2	0.2	0.2	0.2	0.2	0
ROOM INDEX	UTILIZATION FACTORS (PERCENT) $k(RI) \times RCR = 5$									
$k = 0.60$	47	34	27	46	34	27	44	33	26	20
0.80	56	43	35	54	42	34	51	40	33	25
1.00	64	50	42	62	49	41	58	50	40	31
1.25	70	58	49	68	56	48	64	53	46	36
1.50	76	63	54	73	61	53	68	58	51	40
2.00	83	72	63	80	69	61	74	65	59	47
2.50	87	77	69	84	74	67	77	70	63	50
3.00	91	82	74	87	79	72	81	74	68	54
4.00	96	88	81	92	85	78	85	79	74	59
5.00	99	92	86	95	88	83	87	82	77	62
ROOM INDEX	UF (total)									Direct
According to DIN EN 13032-2 2004			Suspended					SHRNOM = 1.25		

C Range: 0 - 360DEG
 C Interval: 22.5DEG
 Test Speed: HIGH
 Temperature: 25.3°C
 Operators: Cloud
 Test Date: 2024-10-30

γ Range: 0 - 180DEG
 γ Interval: 1.0DEG
 Test System: EVERFINE GO-2000B_V1 SYSTEM V2.00.488
 Humidity: 65.0%
 Test Distance: 6.360m [K=1.0000]
 Remarks:

ISOCANDELA DIAGRAM

Test:U:24.00V I:0.4761A P:11.43W PF:1.000 Freq:0Hz Lamp Flux:433.332x1 lm		
NAME: SF21-24V-5050-60-5000-80	TYPE:	WEIGHT:
SPEC.:	DIM.: Length=1m	SERIAL No.:
MFR.:	SUR.:	Shielding Angle:

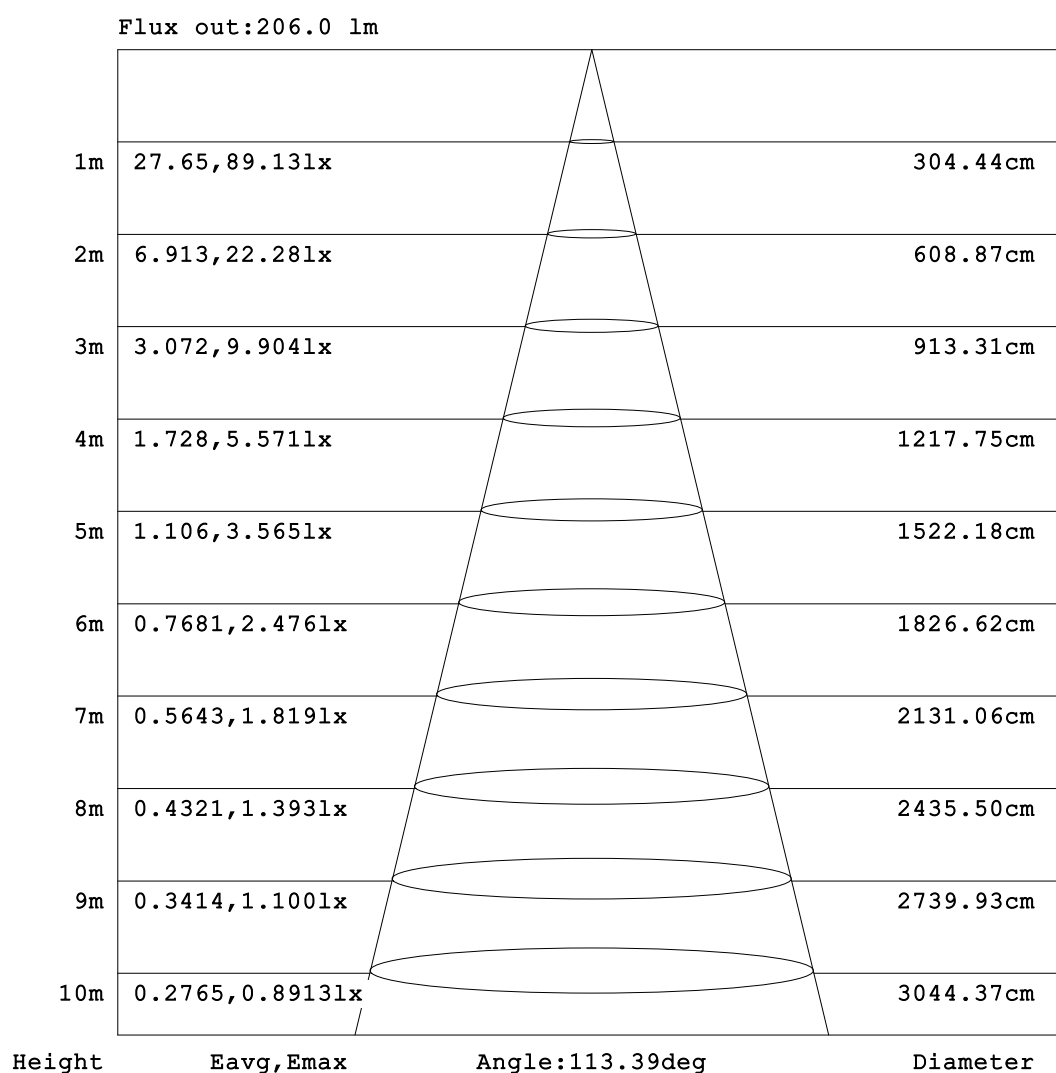


C Range: 0 - 360DEG
C Interval: 22.5DEG
Test Speed: HIGH
Temperature:25.3℃
Operators:Cloud
Test Date:2024-10-30

γ Range: 0 - 180DEG
γ Interval: 1.0DEG
Test System:EVERFINE GO-2000B_V1 SYSTEM V2.00.488
Humidity:65.0%
Test Distance:6.360m [K=1.0000]
Remarks:

AAI Figure

Test:U:24.00V I:0.4761A P:11.43W PF:1.000 Freq:0Hz Lamp Flux:433.332x1 lm		
NAME: SF21-24V-5050-60-5000-80	TYPE:	WEIGHT:
SPEC.:	DIM.: Length=1m	SERIAL No.:
MFR.:	SUR.:	Shielding Angle:



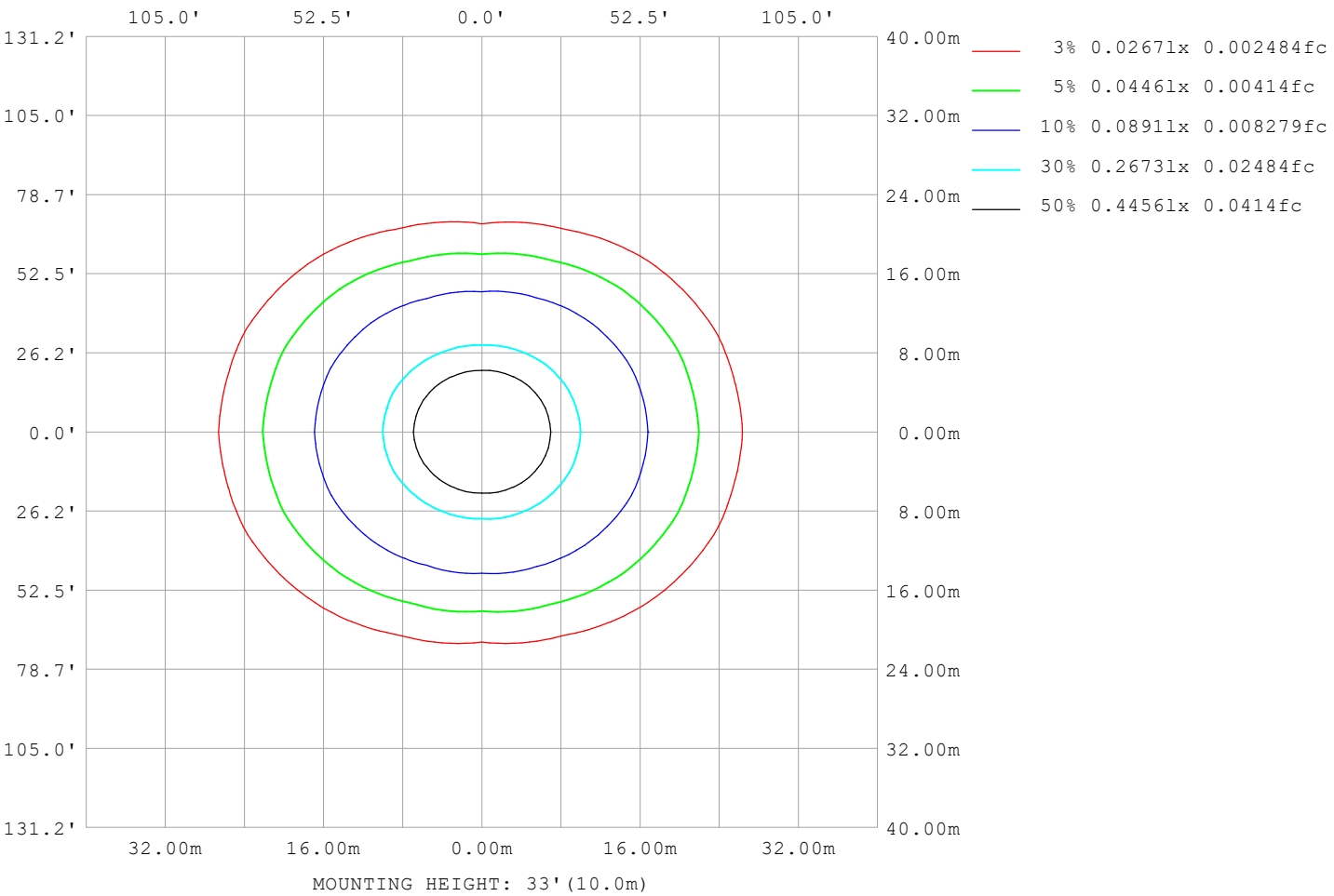
Note: The Curves indicate the illuminated area and the average illumination when the luminaire is at different distance.

C Range: 0 - 360DEG
C Interval: 22.5DEG
Test Speed: HIGH
Temperature: 25.3°C
Operators: Cloud
Test Date: 2024-10-30

γ Range: 0 - 180DEG
γ Interval: 1.0DEG
Test System: EVERFINE GO-2000B_V1 SYSTEM V2.00.488
Humidity: 65.0%
Test Distance: 6.360m [K=1.0000]
Remarks:

ISOLUX DIAGRAM

Test:U:24.00V I:0.4761A P:11.43W PF:1.000 Freq:0Hz Lamp Flux:433.332x1 lm		
NAME: SF21-24V-5050-60-5000-80	TYPE:	WEIGHT:
SPEC.:	DIM.: Length=1m	SERIAL No.:
MFR.:	SUR.:	Shielding Angle:



C Range: 0 - 360DEG	γ Range: 0 - 180DEG
C Interval: 22.5DEG	γ Interval: 1.0DEG
Test Speed: HIGH	Test System:EVERFINE GO-2000B_V1 SYSTEM V2.00.488
Temperature:25.3℃	Humidity:65.0%
Operators:Cloud	Test Distance:6.360m [K=1.0000]
Test Date:2024-10-30	Remarks:

LED Avg.L Report

Test:U:24.00V I:0.4761A P:11.43W PF:1.000 Freq:0Hz Lamp Flux:433.332x1 lm		
NAME: SF21-24V-5050-60-5000-80	TYPE:	WEIGHT:
SPEC.:	DIM.: Length=1m	SERIAL No.:
MFR.:	SUR.:	Shielding Angle:

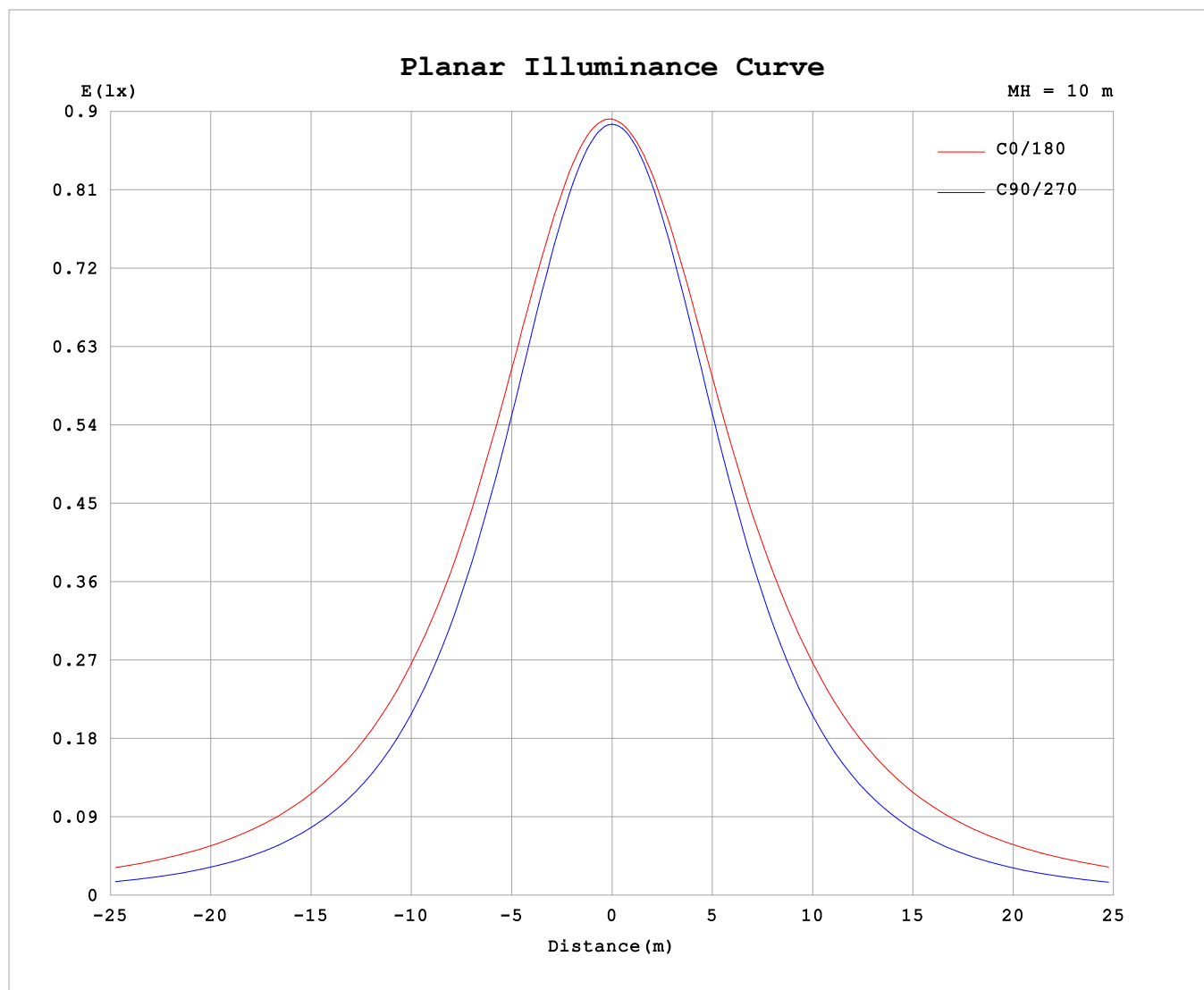
AvgL	cd/m2
L_0~180 (65) av	8793
L_0~180 (75) av	12821
L_0~180 (85) av	33037
L_90~270 (65) av	4713
L_90~270 (75) av	4708
L_90~270 (85) av	5278
L_45 (65) av	7000
L_45 (75) av	9569
L_45 (85) av	23258

Standard: GB/T 29293-2012

C Range: 0 - 360DEG
C Interval: 22.5DEG
Test Speed: HIGH
Temperature:25.3℃
Operators:Cloud
Test Date:2024-10-30

γ Range: 0 - 180DEG
γ Interval: 1.0DEG
Test System:EVERFINE GO-2000B_V1 SYSTEM V2.00.488
Humidity:65.0%
Test Distance:6.360m [K=1.0000]
Remarks:

Planar Illuminance Curve



C Range: 0 - 360DEG
C Interval: 22.5DEG
Test Speed: HIGH
Temperature: 25.3 °C
Operators: Cloud
Test Date: 2024-10-30

γ Range: 0 - 180DEG
 γ Interval: 1.0DEG
Test System: EVERFINE GO-2000B_V1 SYSTEM V2.00.488
Humidity: 65.0%
Test Distance: 6.360m [K=1.0000]
Remarks:

LUMINOUS DISTRIBUTION INTENSITY DATA

Test:U:24.00V I:0.4761A P:11.43W PF:1.000 Freq:0Hz Lamp Flux:433.332x1 lm																	
NAME: SF21-24V-5050-60-5000-80									TYPE:						WEIGHT:		
SPEC.:									DIM.: Length=1m						SERIAL No.:		
MFR.:									SUR.:						Shielding Angle:		

Table--1

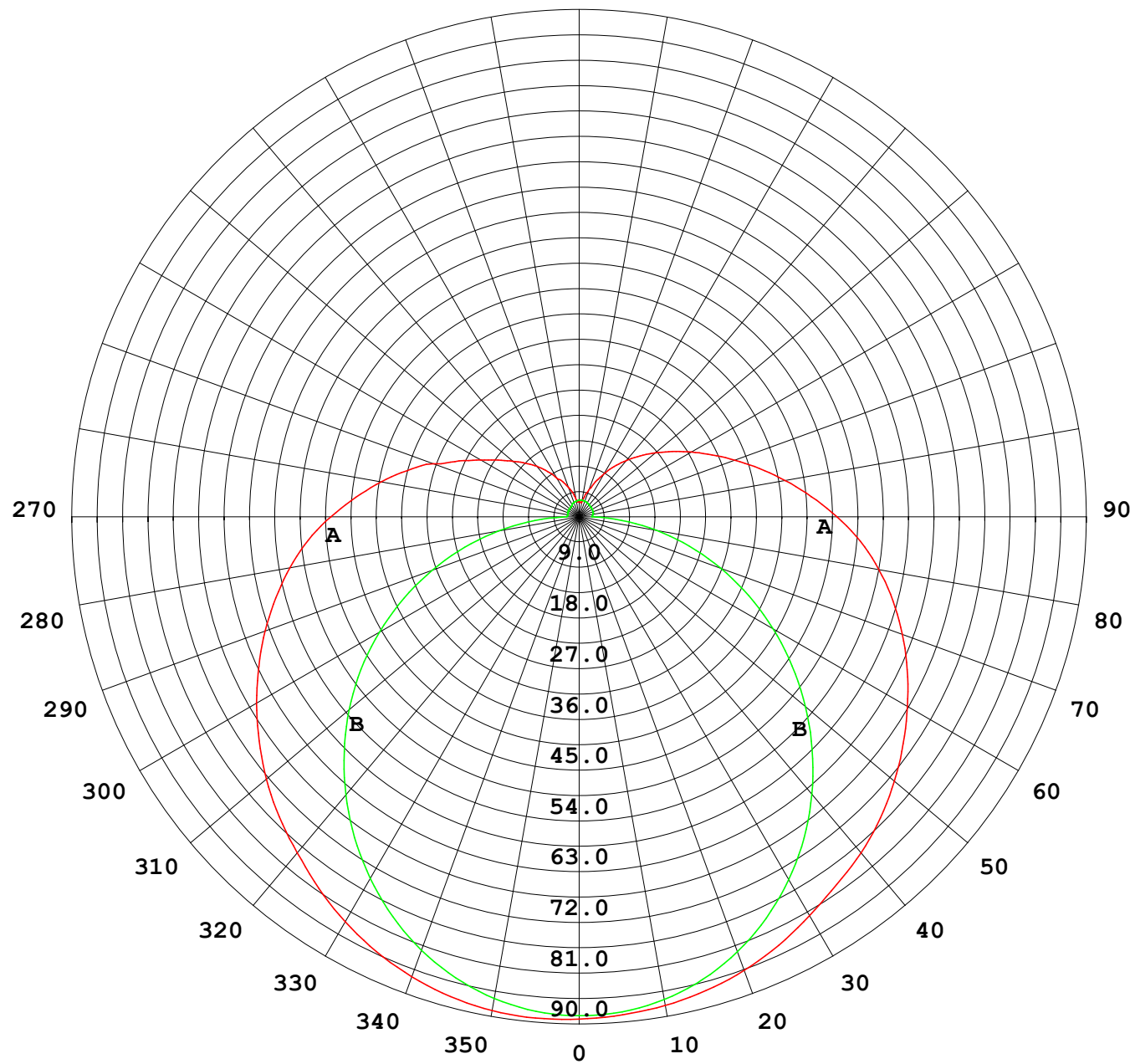
UNIT: cd

C (DEG) γ (DEG)		0	22.5	45	67.5	90	112.5	135	157.5	180	202.5	225	247.5	270	292.5	315	337.5			
0	88.7	88.7	88.7	88.7	88.7	88.7	88.7	88.7	88.7	88.7	88.7	88.7	88.7	88.7	88.7	88.7	88.7			
5	88.8	88.8	88.7	88.4	88.2	88.2	88.1	88.2	88.3	88.2	88.2	88.2	88.2	88.3	88.5	88.7	88.8			
10	88.5	88.4	88.0	87.4	86.9	86.9	87.1	87.4	87.6	87.5	87.3	87.0	87.1	87.5	88.1	88.5				
15	87.7	87.4	86.7	85.6	84.8	84.9	85.5	86.3	86.6	86.4	85.8	85.1	85.1	85.8	86.8	87.6				
20	86.4	86.0	84.7	83.1	82.0	82.2	83.4	84.7	85.2	84.8	83.8	82.5	82.3	83.3	84.9	86.1				
25	84.7	84.0	82.1	79.9	78.4	79.0	80.7	82.7	83.5	82.8	81.2	79.3	78.7	80.2	82.4	84.2				
30	82.6	81.6	79.1	76.1	74.2	75.1	77.6	80.3	81.4	80.4	78.1	75.4	74.5	76.3	79.3	81.8				
35	80.1	78.8	75.5	71.9	69.6	70.8	74.0	77.7	79.3	77.9	74.6	71.0	69.7	72.0	75.8	79.1				
40	77.5	75.7	71.6	67.2	64.5	66.1	70.1	75.5	77.5	75.7	70.8	66.2	64.4	67.1	71.9	76.0				
45	74.9	72.4	67.3	62.0	59.1	61.0	66.5	73.0	75.2	73.3	67.2	61.0	58.6	61.8	67.7	72.7				
50	72.1	69.3	62.8	56.6	53.4	55.7	62.8	70.1	72.7	70.4	63.5	55.5	52.5	56.3	63.2	69.6				
55	69.0	65.8	58.4	51.0	47.3	50.1	58.8	66.9	69.9	67.2	59.5	49.9	46.2	50.6	58.7	66.3				
60	65.8	62.4	54.1	45.2	41.0	44.6	54.5	63.5	66.9	63.9	55.3	44.5	39.8	44.9	54.5	62.9				
65	62.4	58.8	49.7	39.5	34.4	39.4	50.2	60.1	63.9	60.6	51.0	39.4	33.3	39.2	50.1	59.3				
70	59.0	55.3	45.5	34.0	27.8	34.1	46.1	56.7	60.7	57.2	46.9	34.2	26.8	33.7	45.9	55.8				
75	55.5	51.7	41.5	28.9	21.1	28.8	42.1	53.1	57.4	53.6	43.0	29.1	20.3	28.5	41.8	52.2				
80	51.9	48.1	37.7	24.1	14.5	24.0	38.2	49.5	53.8	49.9	39.1	24.5	14.0	23.8	38.0	48.6				
85	48.1	44.3	34.0	19.9	7.96	19.8	34.4	45.5	49.8	45.9	35.2	20.4	7.68	19.6	34.3	44.9				
90	43.9	40.3	30.2	16.2	2.28	16.0	30.4	41.2	45.5	41.7	31.2	16.7	2.28	15.9	30.6	40.9				
95	39.6	36.3	26.6	13.2	2.09	13.0	26.6	37.0	41.2	37.4	27.5	13.7	2.39	12.9	27.0	36.9				
100	35.5	32.5	23.3	9.59	2.08	10.9	23.3	33.0	37.0	33.4	24.1	11.6	2.52	8.53	23.8	33.0				
105	31.5	28.5	18.9	7.70	2.16	9.47	20.4	29.3	33.0	29.7	21.2	10.2	2.59	6.71	18.5	29.0				
110	27.4	23.8	15.9	7.24	2.19	8.39	18.0	25.9	29.3	26.3	18.6	9.11	2.59	5.91	14.6	22.8				
115	23.4	20.7	13.5	6.81	2.20	7.41	15.9	22.9	25.9	23.2	16.5	8.10	2.67	5.84	13.0	19.5				
120	20.1	18.0	11.8	5.90	2.21	6.52	14.1	20.2	22.9	20.4	14.6	7.15	2.70	6.10	11.7	16.8				
125	17.5	15.8	10.4	5.24	2.24	5.52	12.4	17.8	20.1	18.0	12.9	6.10	2.70	5.65	10.4	15.1				
130	15.3	13.9	8.76	4.75	2.28	4.74	10.8	15.5	17.6	15.7	11.2	5.23	2.72	5.10	9.49	13.7				
135	13.4	11.4	7.71	4.40	2.30	4.06	9.31	13.4	15.2	13.6	9.68	4.49	2.75	4.53	8.04	12.3				
140	11.7	10.2	6.74	4.02	2.32	3.51	7.76	11.4	13.0	11.5	8.13	3.88	2.78	4.07	6.84	10.9				
145	9.77	7.85	5.84	3.67	2.35	2.96	6.36	9.46	10.9	9.62	6.62	3.29	2.84	3.70	5.93	8.52				
150	7.83	6.45	5.00	3.22	2.57	2.76	5.17	7.47	8.74	7.60	5.41	3.02	2.89	3.32	5.03	6.85				
155	6.85	5.42	4.27	3.32	2.66	2.71	4.16	5.89	6.82	6.00	4.35	2.89	2.95	3.20	4.27	5.56				
160	5.49	4.38	4.02	3.13	2.73	2.77	3.29	4.52	5.07	4.62	3.36	2.89	2.99	3.19	3.70	4.44				
165	4.38	3.51	3.55	2.99	2.80	2.84	2.94	3.34	3.70	3.36	2.96	2.92	3.00	3.15	3.39	3.61				
170	2.94	3.04	3.18	2.93	2.86	2.92	2.96	3.02	2.57	2.95	2.96	2.95	3.00	3.11	3.25	3.27				
175	2.66	3.01	2.99	2.95	2.92	2.99	3.03	3.09	2.60	2.96	2.99	2.98	3.00	3.08	3.13	3.18				
180	2.63	2.99	2.98	2.99	2.98	3.03	3.09	3.15	2.62	2.99	2.99	2.98	2.98	3.05	3.10	3.17				

C Range: 0 - 360DEG
C Interval: 22.5DEG
Test Speed: HIGH
Temperature:25.3℃
Operators:Cloud
Test Date:2024-10-30

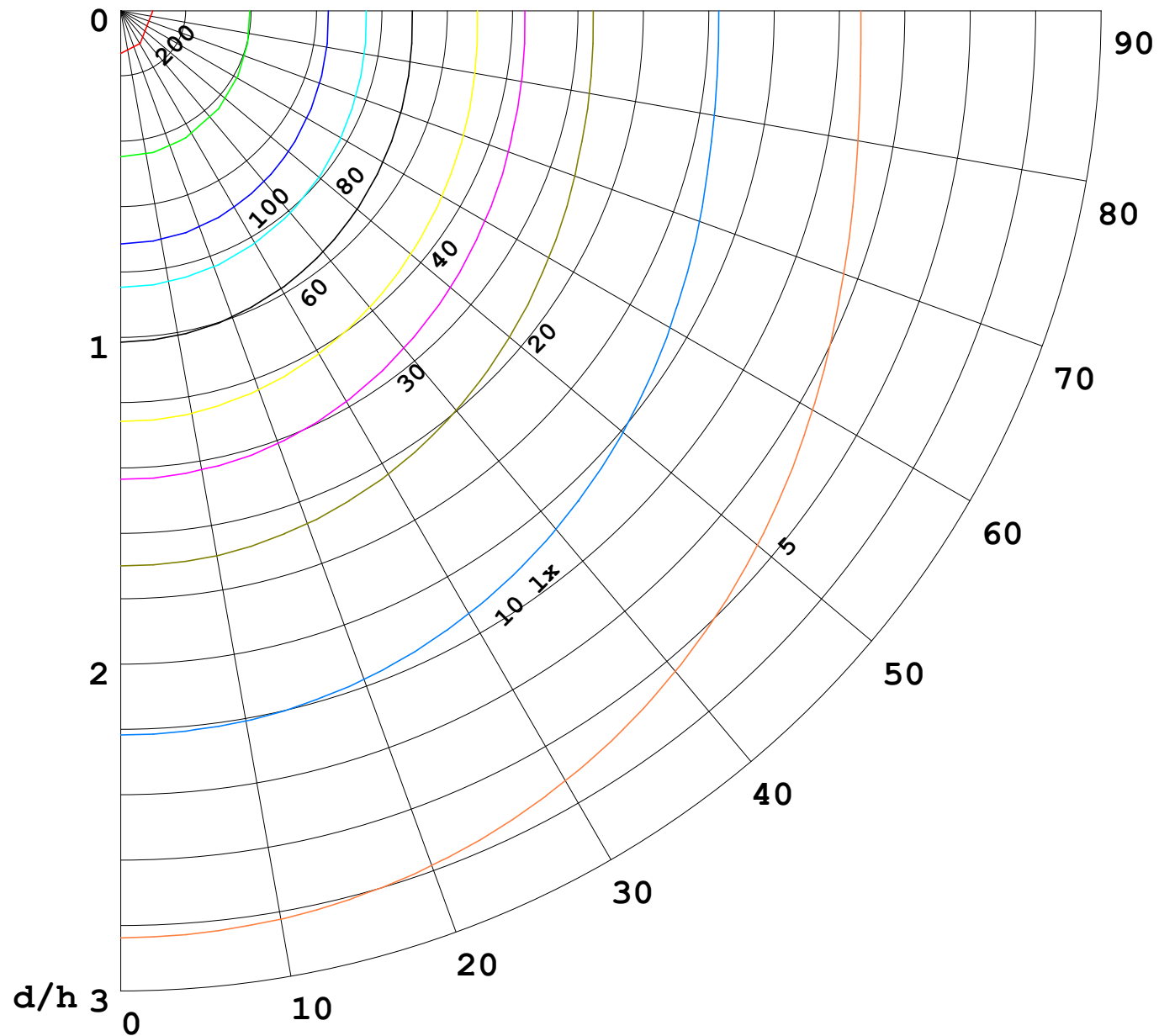
γ Range: 0 - 180DEG
γ Interval: 1.0DEG
Test System:EVERFINE GO-2000B_V1 SYSTEM V2.00.488
Humidity:65.0%
Test Distance:6.360m [K=1.0000]
Remarks:

I (cd)



1000 lm

$\kappa = 1$



F = 1000 lm
 K = 0.7
 Hcc = 0.8 m
 Hfc = 0.0 m
 Eave = 100 lx

	Pcc	Pw	Pfc
————	70	50	30
————	50	30	20

