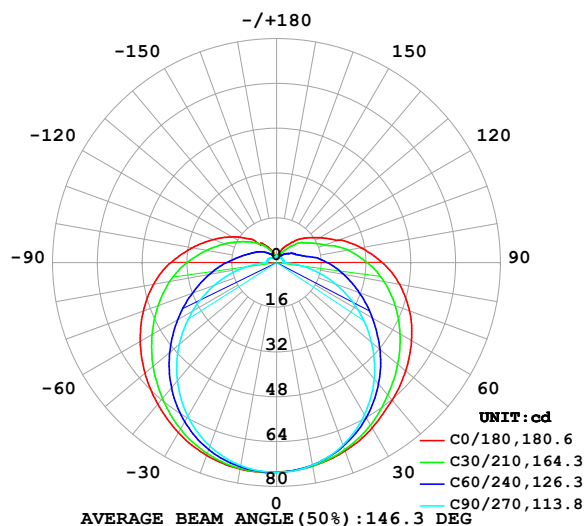


LUMINAIRE PHOTOMETRIC TEST REPORT

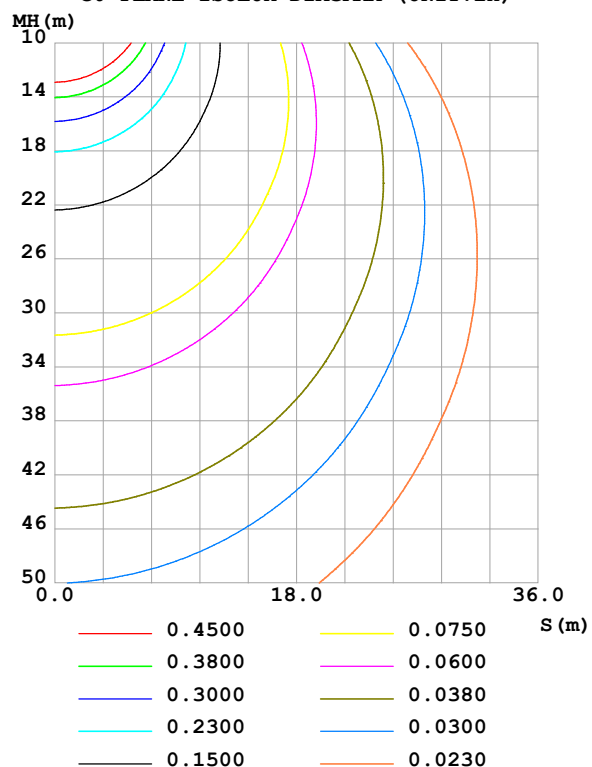
Test:U:24.00V I:0.5015A P:12.04W PF:1.000 Freq:0Hz Lamp Flux:366.728x1 lm		
NAME: SF21-24V-5050-60-2500K	TYPE:	WEIGHT:
SPEC.:	DIM.: Length=1m	SERIAL No.:
MFR.: OLympia lighting	SUR.:	Shielding Angle:

DATA OF LAMP		PHOTOMETRIC DATA				Eff: 30.47 lm/W
MODEL	5050	I _{max} (cd)	75.08	S/MH(C0/180)	1.41	
NOMINAL POWER(W)	12	LOR(%)	100.0	S/MH(C90/270)	1.26	
RATED VOLTAGE(V)	24	TOTAL FLUX(lm)	366.73	η UP,DN(C0-180)	9.8,39.9	
NOMINAL FLUX(lm)	366.728	CIE CLASS	SEMI-D.	η UP,DN(C180-360)	10.0,40.3	
LAMPS INSIDE	1	η up (%)	19.8	CIBSE SHR NOM	1.50	
TEST VOLTAGE(V)		η down (%)	80.2	CIBSE SHR MAX	1.55	

LUMINOUS INTENSITY DISTRIBUTION DIAGRAM



C0 PLANE ISOLUX DIAGRAM (UNIT:lx)



C Range: 0 - 360DEG
C Interval: 30.0DEG
Test Speed: HIGH
Temperature:25.3℃
Operators:
Test Date:2025-03-06

γ Range: 0 - 180DEG
γ Interval: 1.0DEG
Test System:EVERFINE GO-2000B_V1 SYSTEM V2.00.488
Humidity:65.0%
Test Distance:6.360m [K=1.0000]
Remarks:

ZONAL FLUX DIAGRAM

ZONAL FLUX DIAGRAM:

γ	C0	C45	C90	C135	C180	C225	C270	C315	γ	Φ zone	Φ total	%lum, lamp
10	73.85	73.63	73.53	74.36	74.92	74.41	73.64	73.70	0- 10	7.109	7.109	1.94,1.94
20	71.63	70.44	69.41	71.65	73.28	71.82	69.76	70.62	10- 20	20.57	27.68	7.55,7.55
30	68.27	65.55	62.82	66.99	70.19	67.21	63.48	65.80	20- 30	31.80	59.48	16.2,16.2
40	64.25	59.21	54.27	60.71	66.04	60.94	55.20	59.50	30- 40	39.66	99.14	27,27
50	60.20	52.37	44.28	53.58	61.44	53.75	45.42	52.71	40- 50	43.75	142.9	39,39
60	55.68	45.24	33.47	46.02	56.29	46.11	34.73	45.59	50- 60	44.13	187.0	51,51
70	50.54	38.30	22.39	38.58	50.67	38.58	23.70	38.67	60- 70	41.38	228.4	62.3,62.3
80	44.58	31.66	11.62	31.63	44.66	31.59	12.94	32.00	70- 80	36.23	264.6	72.2,72.2
90	37.76	25.30	2.390	25.07	37.79	24.98	3.714	25.63	80- 90	29.54	294.2	80.2,80.2
100	30.75	19.12	2.419	19.34	30.65	19.26	3.615	19.52	90-100	22.97	317.2	86.5,86.5
110	23.52	13.42	2.419	14.90	24.15	14.79	3.425	14.34	100-110	17.15	334.3	91.2,91.2
120	17.90	10.41	2.375	11.52	18.48	11.40	3.159	11.04	110-120	12.30	346.6	94.5,94.5
130	13.64	8.133	2.315	8.835	13.41	8.735	2.769	8.251	120-130	8.603	355.2	96.9,96.9
140	10.29	5.747	2.199	6.591	9.091	6.438	2.387	5.721	130-140	5.562	360.8	98.4,98.4
150	7.098	3.723	2.058	4.751	6.606	4.489	2.176	3.935	140-150	3.254	364.0	99.3,99.3
160	4.441	2.737	2.113	3.356	4.043	3.156	2.159	2.983	150-160	1.713	365.7	99.7,99.7
170	2.432	2.254	2.208	2.555	2.268	2.405	2.254	2.438	160-170	0.7739	366.5	99.9,99.9
180	2.332	2.281	2.321	2.418	2.314	2.288	2.321	2.405	170-180	0.2238	366.7	100,100
DEG	LUMINOUS INTENSITY:cd									UNIT:lm		

Conical surface Flux(90deg): 120.74 lm

%lum = 32.9%

%lamp = 32.9%

Conical surface Flux(130deg): 208.23 lm

%lum = 56.8%

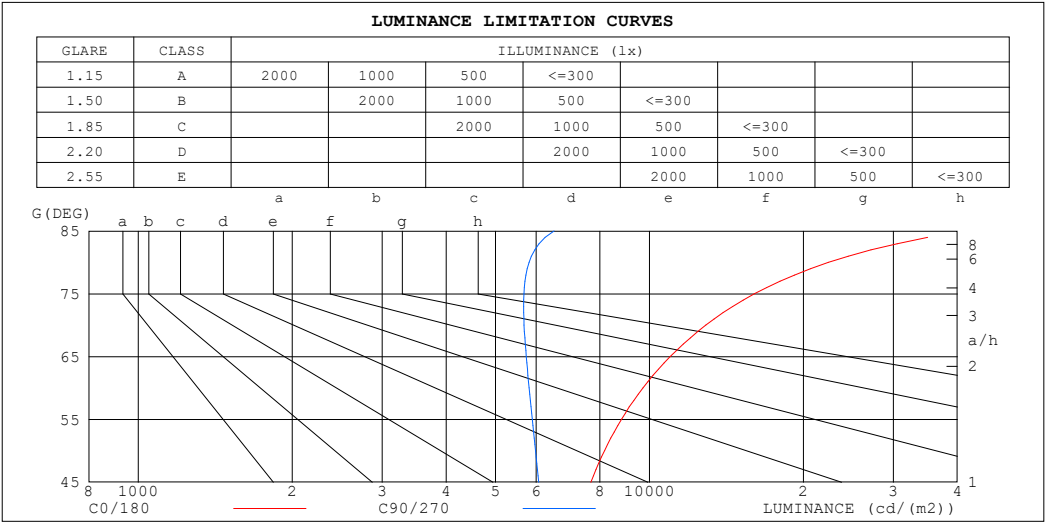
%lamp = 56.8%

C Range: 0 - 360DEG
 C Interval: 30.0DEG
 Test Speed: HIGH
 Temperature:25.3℃
 Operators:
 Test Date:2025-03-06

γ Range: 0 - 180DEG
 γ Interval: 1.0DEG
 Test System:EVERFINE GO-2000B_V1 SYSTEM V2.00.488
 Humidity:65.0%
 Test Distance:6.360m [K=1.0000]
 Remarks:

LUMINANCE LIMITATION CURVES

Test:U:24.00V I:0.5015A P:12.04W PF:1.000 Freq:0Hz Lamp Flux:366.728x1 lm		
NAME: SF21-24V-5050-60-2500K	TYPE:	WEIGHT:
SPEC.:	DIM.: Length=1m	SERIAL No.:
MFR.: OLympia lighting	SUR.:	Shielding Angle:



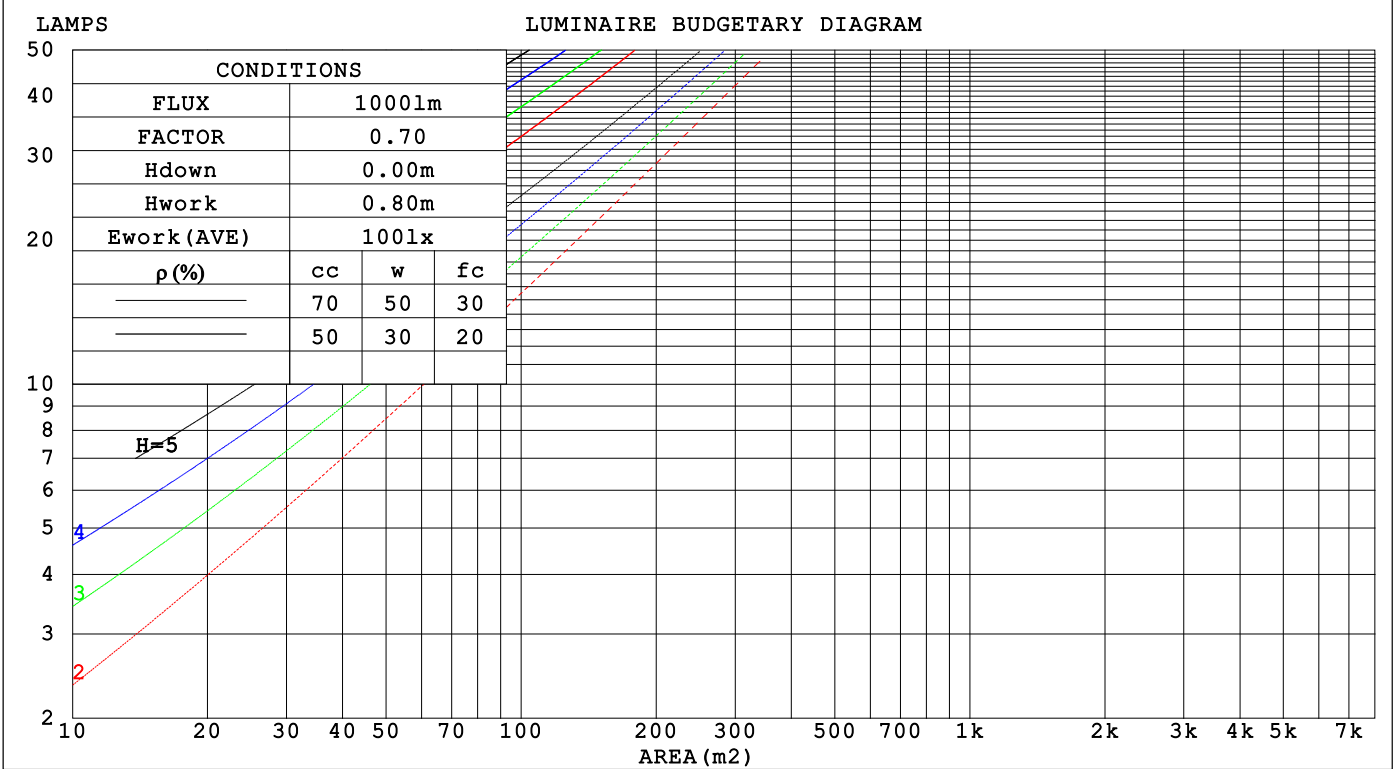
LUMINANCE cd/(m2)		
G (DEG)	C0/180	C90/270
85	41325	6510
80	22382	5811
75	16045	5685
70	12884	5685
65	10979	5739
60	9708	5813
55	8815	5896
50	8165	5983
45	7679	6069

C Range: 0 - 360DEG	γ Range: 0 - 180DEG
C Interval: 30.0DEG	γ Interval: 1.0DEG
Test Speed: HIGH	Test System:EVERFINE GO-2000B_V1 SYSTEM V2.00.488
Temperature:25.3℃	Humidity:65.0%
Operators:	Test Distance:6.360m [K=1.0000]
Test Date:2025-03-06	Remarks:

CU AND LUMINAIRE BUDGETARY ESTIMATE DIAGRAM

Test:U:24.00V I:0.5015A P:12.04W PF:1.000 Freq:0Hz		
Lamp Flux:366.728x1 lm		
NAME: SF21-24V-5050-60-2500K	TYPE:	WEIGHT:
SPEC.:	DIM.: Length=1m	SERIAL No.:
MFR.: OLYMPIA lighting	SUR.:	Shielding Angle:

pcc	80%			70%			50%			30%			10%			0
pw	50%	30%	10%	50%	30%	10%	50%	30%	10%	50%	30%	10%	50%	30%	10%	0
pfc	20%			20%			20%			20%			20%			0
RCR	RCR:Room Cavity Ratio			Coefficients of Utilization(CU)												
0.0	1.14	1.14	1.14	1.09	1.09	1.09	1.00	1.00	1.00	.92	.92	.92	.84	.84	.84	.80
1.0	.95	.89	.84	.90	.86	.81	.82	.79	.75	.75	.72	.69	.68	.66	.64	.60
2.0	.81	.73	.66	.77	.70	.64	.70	.64	.59	.64	.59	.55	.58	.54	.51	.47
3.0	.70	.61	.54	.67	.59	.52	.61	.54	.48	.56	.50	.45	.50	.46	.42	.39
4.0	.61	.52	.45	.59	.50	.43	.54	.46	.40	.49	.43	.38	.45	.39	.35	.32
5.0	.54	.45	.38	.52	.43	.37	.48	.40	.34	.44	.37	.32	.40	.34	.30	.27
6.0	.49	.39	.33	.47	.38	.32	.43	.35	.30	.39	.33	.28	.36	.30	.26	.24
7.0	.44	.35	.28	.42	.34	.28	.39	.31	.26	.36	.29	.25	.33	.27	.23	.21
8.0	.40	.31	.25	.38	.30	.24	.35	.28	.23	.33	.26	.22	.30	.25	.20	.18
9.0	.36	.28	.22	.35	.27	.22	.32	.25	.21	.30	.24	.20	.28	.22	.18	.16
10.0	.33	.25	.20	.32	.25	.20	.30	.23	.19	.28	.22	.18	.26	.20	.17	.15



C Range: 0 - 360DEG
C Interval: 30.0DEG
Test Speed: HIGH
Temperature:25.3℃
Operators:
Test Date:2025-03-06

γ Range: 0 - 180DEG
γ Interval: 1.0DEG
Test System:EVERFINE GO-2000B_V1 SYSTEM V2.00.488
Humidity:65.0%
Test Distance:6.360m [K=1.0000]
Remarks:

WEC AND CCEC

Test:U:24.00V I:0.5015A P:12.04W PF:1.000 Freq:0Hz Lamp Flux:366.728x1 lm		
NAME: SF21-24V-5050-60-2500K	TYPE:	WEIGHT:
SPEC.:	DIM.: Length=1m	SERIAL No.:
MFR.: OLympia lighting	SUR.:	Shielding Angle:

pcc	80%			70%			50%			30%			10%			0														
pw	50%	30%	10%	50%	30%	10%	50%	30%	10%	50%	30%	10%	50%	30%	10%	0														
pfc	20%			20%			20%			20%			20%			0														
RCR	RCR:Room Cavity Ratio															Wall Exitance Coefficients(WEC)														
0.0																														
1.0	.394	.224	.071	.380	.217	.069	.355	.204	.065	.333	.192	.062	.311	.181	.058															
2.0	.338	.185	.057	.326	.180	.055	.304	.169	.052	.283	.159	.050	.264	.149	.047															
3.0	.299	.159	.048	.288	.154	.046	.268	.145	.044	.249	.136	.042	.232	.128	.040															
4.0	.269	.140	.041	.259	.135	.040	.240	.127	.038	.223	.120	.036	.207	.113	.034															
5.0	.244	.124	.036	.235	.121	.035	.218	.113	.033	.202	.107	.032	.188	.100	.030															
6.0	.223	.112	.032	.215	.109	.031	.200	.102	.030	.185	.096	.028	.172	.090	.027															
7.0	.205	.102	.029	.198	.099	.028	.184	.093	.027	.171	.088	.025	.158	.082	.024															
8.0	.190	.093	.026	.184	.090	.026	.171	.085	.024	.159	.080	.023	.147	.076	.022															
9.0	.177	.086	.024	.171	.083	.023	.159	.079	.022	.148	.074	.021	.137	.070	.020															
10.0	.166	.080	.022	.160	.077	.022	.149	.073	.021	.139	.069	.020	.129	.065	.019															

pcc	80%			70%			50%			30%			10%			0
pw	50%	30%	10%	50%	30%	10%	50%	30%	10%	50%	30%	10%	50%	30%	10%	0
pfc	20%			20%			20%			20%			20%			0
RCR	RCR:Room Cavity Ratio						Ceiling Cavity Exitance Coefficients (CCEC)									
0.0	.341	.341	.341	.292	.292	.292	.199	.199	.199	.114	.114	.114	.037	.037	.037	
1.0	.338	.307	.280	.289	.264	.241	.198	.181	.166	.114	.105	.097	.036	.034	.031	
2.0	.331	.285	.245	.284	.245	.212	.195	.170	.148	.112	.099	.087	.036	.032	.028	
3.0	.324	.268	.224	.278	.231	.194	.191	.161	.136	.110	.094	.080	.035	.030	.026	
4.0	.316	.256	.210	.271	.221	.182	.187	.154	.128	.108	.090	.076	.035	.029	.025	
5.0	.308	.246	.200	.265	.213	.174	.182	.149	.123	.106	.087	.073	.034	.029	.024	
6.0	.301	.238	.193	.259	.206	.168	.178	.144	.119	.104	.085	.071	.033	.028	.023	
7.0	.294	.232	.188	.253	.201	.164	.175	.141	.116	.101	.083	.069	.033	.027	.023	
8.0	.287	.226	.184	.247	.196	.161	.171	.138	.114	.099	.081	.068	.032	.027	.022	
9.0	.281	.221	.181	.242	.192	.158	.168	.135	.112	.098	.080	.067	.032	.026	.022	
10.0	.275	.217	.179	.237	.189	.156	.164	.133	.111	.096	.078	.066	.031	.026	.022	

C Range: 0 - 360DEG
C Interval: 30.0DEG
Test Speed: HIGH
Temperature:25.3℃
Operators:
Test Date:2025-03-06

γ Range: 0 - 180DEG
γ Interval: 1.0DEG
Test System:EVERFINE GO-2000B_V1 SYSTEM V2.00.488
Humidity:65.0%
Test Distance:6.360m [K=1.0000]
Remarks:

UGR(Unified Glare Rating) Table

Test:U:24.00V I:0.5015A P:12.04W PF:1.000 Freq:0Hz Lamp Flux:366.728x1 lm										
NAME: SF21-24V-5050-60-2500K					TYPE:			WEIGHT:		
SPEC.:					DIM.: Length=1m			SERIAL No.:		
MFR.: OLympia lighting					SUR.:			Shielding Angle:		
ceiling/cavity	0.7	0.7	0.5	0.5	0.3	0.7	0.7	0.5	0.5	0.3
walls	0.5	0.3	0.5	0.3	0.3	0.5	0.3	0.5	0.3	0.3
working plane	0.2	0.2	0.2	0.2	0.2	0.2	0.2	0.2	0.2	0.2
Room dimensions	Viewed crosswise					Viewed endwise				
x = 2H y = 2H	22.9	24.2	23.4	24.8	25.4	20.8	22.2	21.3	22.7	23.3
3H	25.7	27.0	26.3	27.5	28.2	22.5	23.8	23.1	24.4	25.0
4H	27.3	28.5	27.9	29.0	29.7	23.3	24.5	23.9	25.1	25.8
6H	29.0	30.1	29.6	30.7	31.4	24.0	25.2	24.6	25.8	26.4
8H	30.0	31.1	30.6	31.7	32.4	24.3	25.4	24.9	26.0	26.7
12H	31.1	32.1	31.7	32.7	33.5	24.5	25.6	25.2	26.2	26.9
4H 2H	23.5	24.7	24.0	25.2	25.9	21.9	23.1	22.5	23.7	24.4
3H	26.5	27.6	27.2	28.2	28.9	23.9	25.0	24.6	25.6	26.3
4H	28.3	29.3	28.9	29.9	30.6	24.9	25.9	25.6	26.5	27.3
6H	30.2	31.1	30.9	31.8	32.5	25.8	26.7	26.5	27.4	28.1
8H	31.3	32.1	32.0	32.8	33.6	26.2	27.0	26.9	27.7	28.5
12H	32.6	33.3	33.2	34.0	34.8	26.5	27.3	27.2	28.0	28.8
8H 4H	28.6	29.5	29.3	30.1	30.9	26.0	26.8	26.7	27.5	28.3
6H	30.9	31.6	31.6	32.3	33.1	27.3	28.0	28.0	28.7	29.5
8H	32.2	32.8	32.9	33.6	34.4	27.9	28.5	28.6	29.2	30.1
12H	33.7	34.2	34.4	35.0	35.9	28.4	29.0	29.2	29.7	30.6
12H 4H	28.7	29.4	29.4	30.1	30.9	26.4	27.1	27.1	27.8	28.6
6H	31.0	31.7	31.8	32.4	33.2	27.8	28.5	28.6	29.2	30.0
8H	32.5	33.0	33.2	33.7	34.6	28.6	29.2	29.4	29.9	30.8
Variations with the observer position at spacings(CIE Pub.117):										
S = 1.0H	+ 0.1 / - 0.1					+ 0.1 / - 0.1				
1.5H	+ 0.2 / - 0.3					+ 0.2 / - 0.3				
2.0H	+ 0.2 / - 0.3					+ 0.2 / - 0.4				

CIE Pub.117, 366.7 lm Total Lamp Luminous Flux Correct (8log(F/F0) = -3.5)
Area: 0.0115 m2

C Range: 0 - 360DEG
C Interval: 30.0DEG
Test Speed: HIGH
Temperature:25.3℃
Operators:
Test Date:2025-03-06

γ Range: 0 - 180DEG
γ Interval: 1.0DEG
Test System:EVERFINE GO-2000B_V1 SYSTEM V2.00.488
Humidity:65.0%
Test Distance:6.360m [K=1.0000]
Remarks:

UTILIZATION FACTORS TABLE

Test:U:24.00V I:0.5015A P:12.04W PF:1.000 Freq:0Hz Lamp Flux:366.728x1 lm		
NAME: SF21-24V-5050-60-2500K	TYPE:	WEIGHT:
SPEC.:	DIM.: Length=1m	SERIAL No.:
MFR.: OLympia lighting	SUR.:	Shielding Angle:

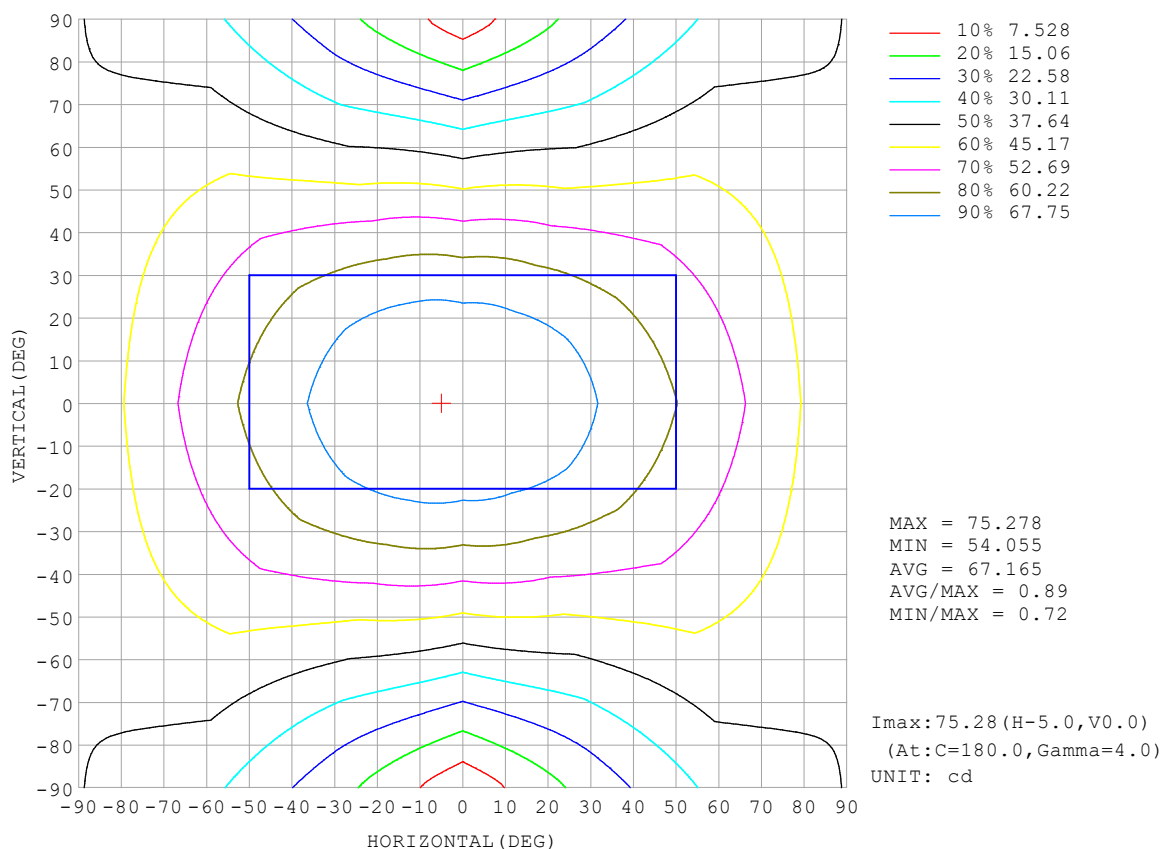
REFLECTANCE										
Ceiling	0.8	0.8	0.8	0.7	0.7	0.7	0.5	0.5	0.5	0
Walls	0.7	0.5	0.3	0.7	0.5	0.3	0.7	0.5	0.3	0
Working plane	0.2	0.2	0.2	0.2	0.2	0.2	0.2	0.2	0.2	0
ROOM INDEX	UTILIZATION FACTORS (PERCENT) $k(RI) \times RCR = 5$									
$k = 0.60$	47	34	27	46	34	27	44	33	26	20
0.80	56	43	35	54	42	34	51	40	33	25
1.00	63	50	42	61	49	41	58	50	40	31
1.25	70	57	49	68	56	48	63	53	46	36
1.50	75	63	54	73	61	53	68	58	51	40
2.00	83	71	63	80	69	61	74	65	58	46
2.50	87	77	69	84	74	67	77	70	63	50
3.00	91	82	74	87	79	72	80	73	68	54
4.00	96	88	81	92	85	78	84	78	73	58
5.00	99	92	86	95	88	83	87	82	77	62
ROOM INDEX	UF (total)									Direct
According to DIN EN 13032-2 2004			Suspended					SHRNOM = 1.25		

C Range: 0 - 360DEG
 C Interval: 30.0DEG
 Test Speed: HIGH
 Temperature: 25.3 °C
 Operators:
 Test Date: 2025-03-06

γ Range: 0 - 180DEG
 γ Interval: 1.0DEG
 Test System: EVERFINE GO-2000B_V1 SYSTEM V2.00.488
 Humidity: 65.0%
 Test Distance: 6.360m [K=1.0000]
 Remarks:

ISOCANDELA DIAGRAM

Test:U:24.00V I:0.5015A P:12.04W PF:1.000 Freq:0Hz Lamp Flux:366.728x1 lm		
NAME: SF21-24V-5050-60-2500K	TYPE:	WEIGHT:
SPEC.:	DIM.: Length=1m	SERIAL No.:
MFR.: OLympia lighting	SUR.:	Shielding Angle:

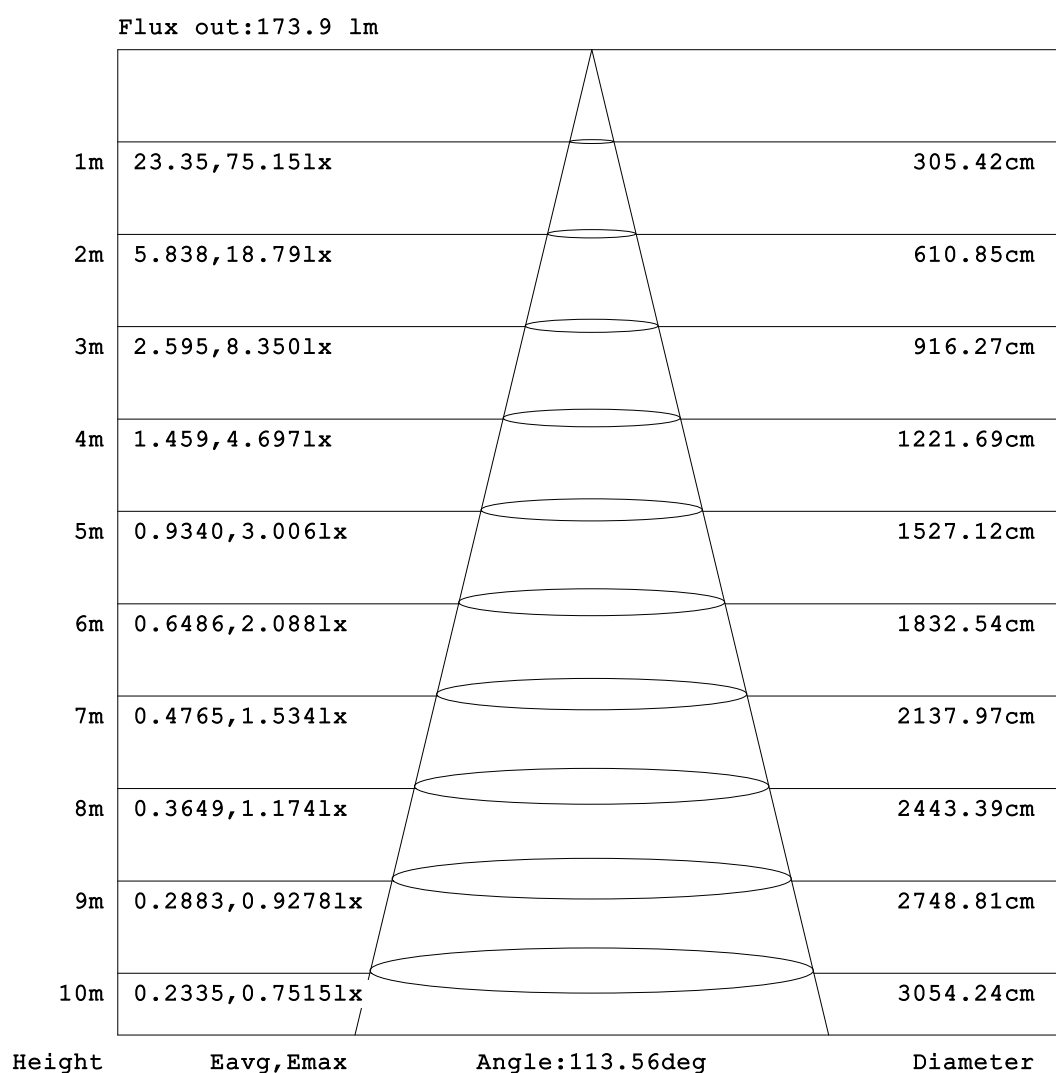


C Range: 0 - 360DEG
C Interval: 30.0DEG
Test Speed: HIGH
Temperature: 25.3°C
Operators:
Test Date: 2025-03-06

γ Range: 0 - 180DEG
γ Interval: 1.0DEG
Test System: EVERFINE GO-2000B_V1 SYSTEM V2.00.488
Humidity: 65.0%
Test Distance: 6.360m [K=1.0000]
Remarks:

AAI Figure

Test:U:24.00V I:0.5015A P:12.04W PF:1.000 Freq:0Hz Lamp Flux:366.728x1 lm		
NAME: SF21-24V-5050-60-2500K	TYPE:	WEIGHT:
SPEC.:	DIM.: Length=1m	SERIAL No.:
MFR.: OLympia lighting	SUR.:	Shielding Angle:



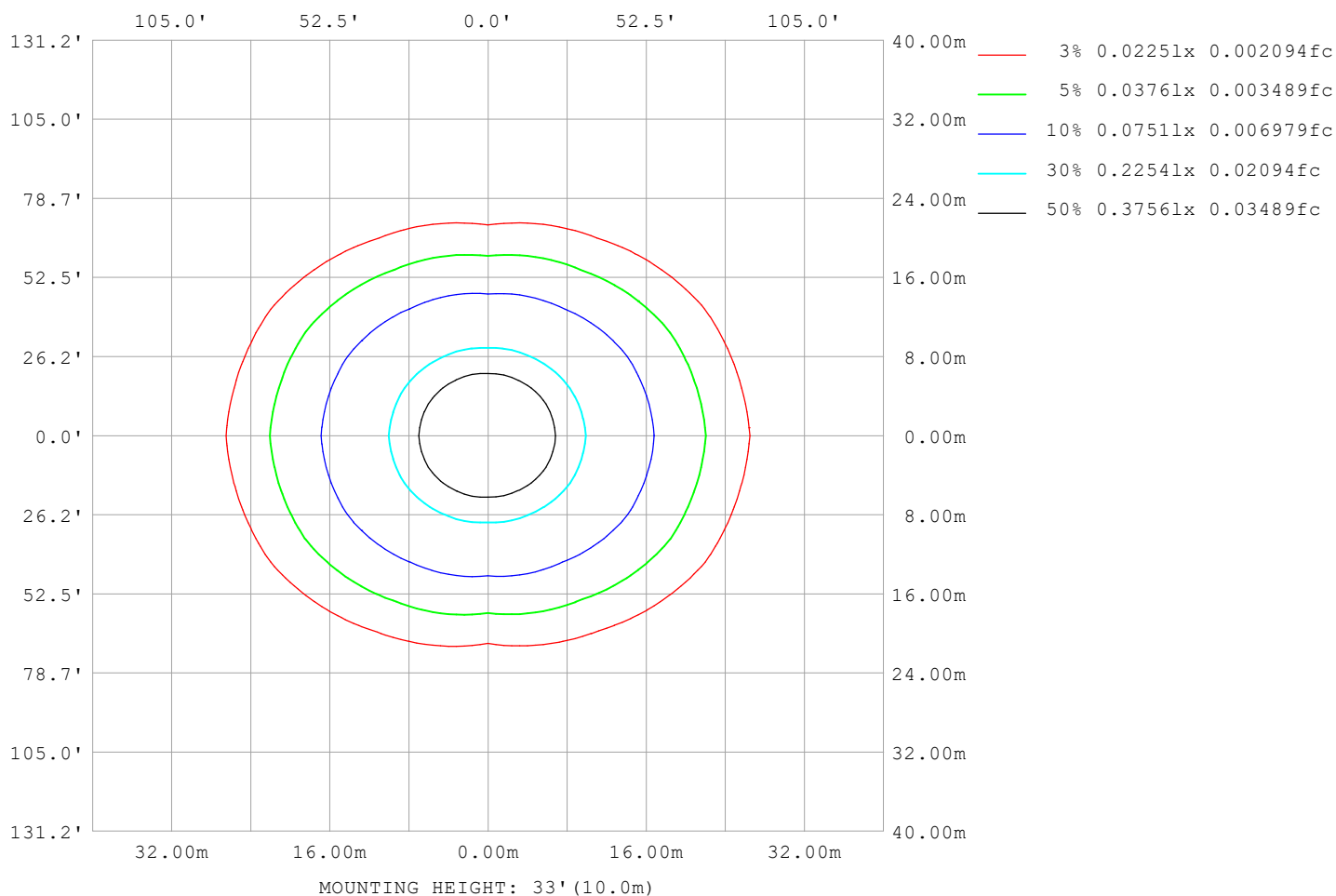
Note:The Curves indicate the illuminated area and the average illumination when the luminaire is at different distance.

C Range: 0 - 360DEG
C Interval: 30.0DEG
Test Speed: HIGH
Temperature:25.3℃
Operators:
Test Date:2025-03-06

γ Range: 0 - 180DEG
γ Interval: 1.0DEG
Test System:EVERFINE GO-2000B_V1 SYSTEM V2.00.488
Humidity:65.0%
Test Distance:6.360m [K=1.0000]
Remarks:

ISOLUX DIAGRAM

Test:U:24.00V I:0.5015A P:12.04W PF:1.000 Freq:0Hz Lamp Flux:366.728x1 lm		
NAME: SF21-24V-5050-60-2500K	TYPE:	WEIGHT:
SPEC.:	DIM.: Length=1m	SERIAL No.:
MFR.: OLympia lighting	SUR.:	Shielding Angle:



C Range: 0 - 360DEG
C Interval: 30.0DEG
Test Speed: HIGH
Temperature: 25.3°C
Operators:
Test Date: 2025-03-06

γ Range: 0 - 180DEG
γ Interval: 1.0DEG
Test System: EVERFINE GO-2000B_V1 SYSTEM V2.00.488
Humidity: 65.0%
Test Distance: 6.360m [K=1.0000]
Remarks:

LED Avg.L Report

Test:U:24.00V I:0.5015A P:12.04W PF:1.000 Freq:0Hz Lamp Flux:366.728x1 lm		
NAME: SF21-24V-5050-60-2500K	TYPE:	WEIGHT:
SPEC.:	DIM.: Length=1m	SERIAL No.:
MFR.: OLympia lighting	SUR.:	Shielding Angle:

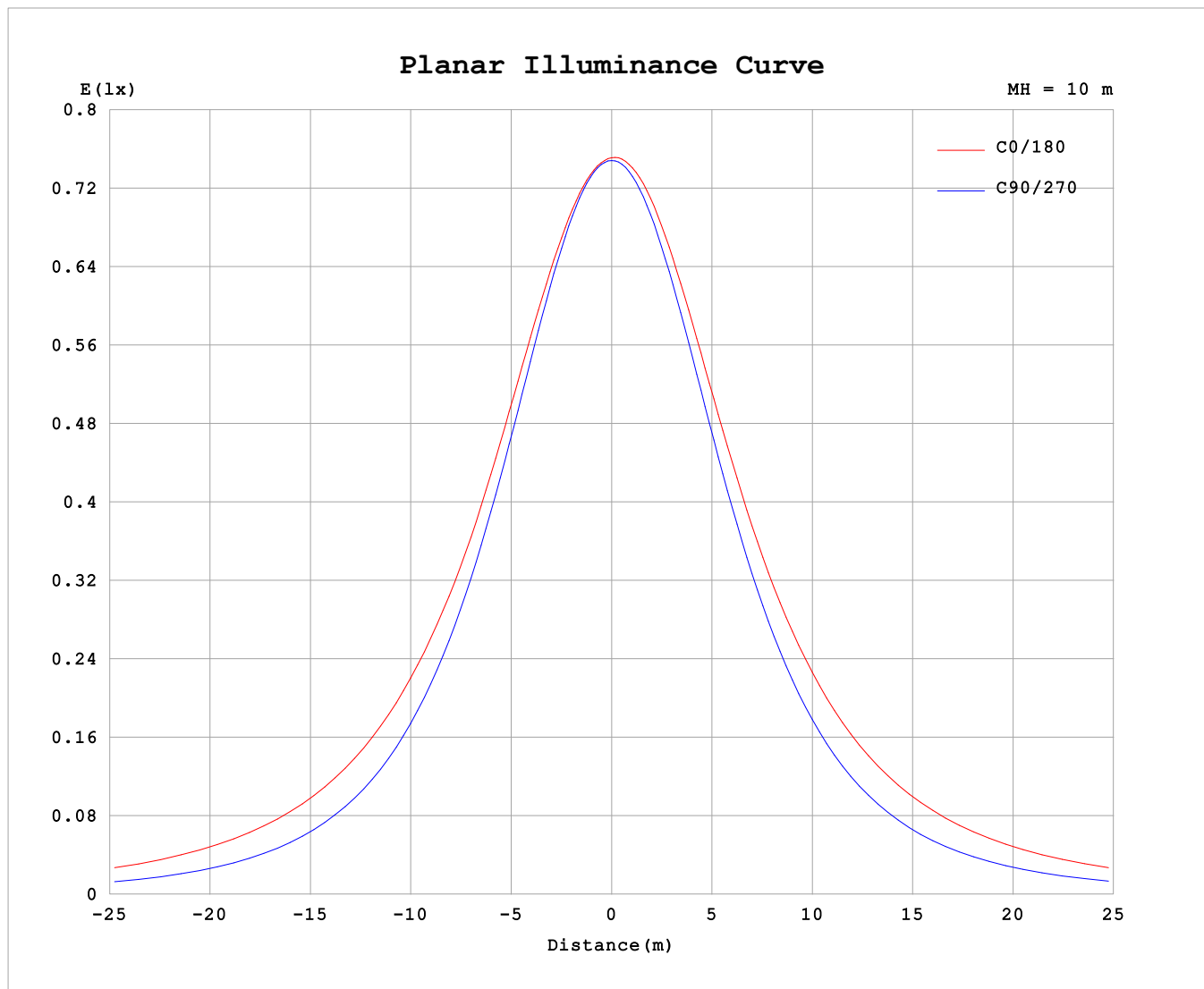
AvgL	cd/m2
L_0~180 (65) av	10982
L_0~180 (75) av	16020
L_0~180 (85) av	41251
L_90~270 (65) av	5879
L_90~270 (75) av	5914
L_90~270 (85) av	7133
L_45 (65) av	8693
L_45 (75) av	11881
L_45 (85) av	28929

Standard: GB/T 29293-2012

C Range: 0 - 360DEG
C Interval: 30.0DEG
Test Speed: HIGH
Temperature:25.3℃
Operators:
Test Date:2025-03-06

γ Range: 0 - 180DEG
γ Interval: 1.0DEG
Test System:EVERFINE GO-2000B_V1 SYSTEM V2.00.488
Humidity:65.0%
Test Distance:6.360m [K=1.0000]
Remarks:

Planar Illuminance Curve



C Range: 0 - 360DEG
C Interval: 30.0DEG
Test Speed: HIGH
Temperature: 25.3 °C
Operators:
Test Date: 2025-03-06

γ Range: 0 - 180DEG
 γ Interval: 1.0DEG
Test System: EVERFINE GO-2000B_V1 SYSTEM V2.00.488
Humidity: 65.0%
Test Distance: 6.360m [K=1.0000]
Remarks:

LUMINOUS DISTRIBUTION INTENSITY DATA

Test:U:24.00V I:0.5015A P:12.04W PF:1.000 Freq:0Hz Lamp Flux:366.728x1 lm																	
NAME: SF21-24V-5050-60-2500K									TYPE:						WEIGHT:		
SPEC.:									DIM.: Length=1m						SERIAL No.:		
MFR.: OLympia lighting									SUR.:						Shielding Angle:		

Table--1

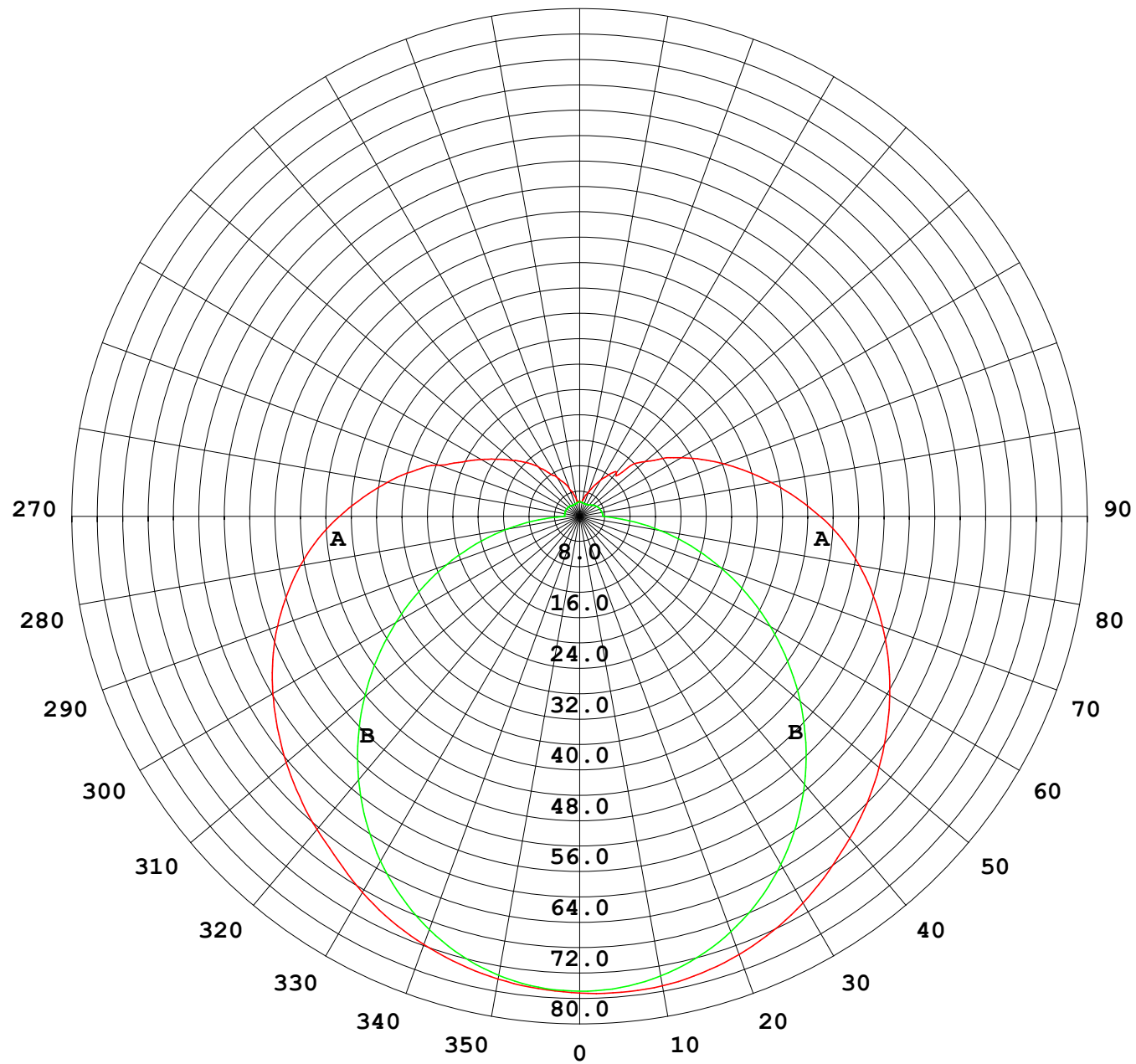
UNIT: cd

C (DEG) γ (DEG)	0	30	60	90	120	150	180	210	240	270	300	330						
0	74.9	74.9	74.9	74.9	74.9	74.9	74.9	74.9	74.9	74.9	74.9	74.9						
5	74.5	74.5	74.5	74.6	74.8	75.0	75.1	75.0	74.8	74.6	74.5	74.5						
10	73.8	73.8	73.5	73.5	74.1	74.6	74.9	74.7	74.1	73.6	73.6	73.8						
15	72.9	72.6	71.9	71.8	72.7	73.8	74.3	73.9	72.9	72.0	72.1	72.7						
20	71.6	71.1	69.8	69.4	70.8	72.5	73.3	72.6	71.1	69.8	70.1	71.1						
25	70.1	69.3	67.1	66.4	68.3	70.8	71.9	70.9	68.7	66.9	67.5	69.3						
30	68.3	67.1	64.0	62.8	65.3	68.7	70.2	68.7	65.7	63.5	64.5	67.1						
35	66.1	64.5	60.5	58.8	61.8	66.2	68.2	66.2	62.3	59.6	61.1	64.5						
40	64.3	61.7	56.7	54.3	58.0	63.4	66.0	63.4	58.4	55.2	57.3	61.7						
45	62.3	59.2	52.5	49.4	53.8	60.6	63.8	60.6	54.3	50.5	53.3	59.1						
50	60.2	56.5	48.2	44.3	49.4	57.7	61.4	57.6	49.9	45.4	49.0	56.4						
55	58.0	53.7	43.8	38.9	44.9	54.6	58.9	54.5	45.3	40.1	44.6	53.6						
60	55.7	50.9	39.6	33.5	40.5	51.5	56.3	51.4	40.8	34.7	40.4	50.8						
65	53.2	48.0	35.5	27.9	36.2	48.4	53.5	48.2	36.4	29.2	36.3	47.9						
70	50.5	45.1	31.5	22.4	31.9	45.2	50.7	45.1	32.1	23.7	32.3	45.0						
75	47.6	42.1	27.8	16.9	28.0	42.1	47.7	41.9	28.1	18.3	28.6	42.0						
80	44.6	39.0	24.3	11.6	24.3	38.9	44.7	38.8	24.4	12.9	25.2	38.8						
85	41.3	35.8	21.1	6.53	21.0	35.7	41.4	35.5	21.1	7.77	21.9	35.6						
90	37.8	32.4	18.2	2.39	17.9	32.2	37.8	32.1	17.9	3.71	19.0	32.3						
95	34.2	29.1	15.6	2.38	15.2	28.8	34.2	28.7	15.2	3.66	16.4	29.0						
100	30.7	26.0	12.3	2.42	13.1	25.6	30.7	25.5	13.0	3.62	13.2	25.9						
105	27.3	22.4	9.68	2.42	11.3	22.7	27.3	22.5	11.2	3.53	10.8	22.4						
110	23.5	18.6	8.20	2.42	9.89	19.9	24.1	19.8	9.81	3.42	9.45	19.2						
115	20.3	16.1	7.33	2.40	8.79	17.4	21.2	17.3	8.70	3.31	7.93	16.7						
120	17.9	14.1	6.76	2.38	7.86	15.2	18.5	15.0	7.75	3.16	7.47	14.6						
125	15.7	12.5	5.68	2.35	6.99	13.2	15.9	13.1	6.88	2.99	6.27	12.7						
130	13.6	11.2	5.09	2.31	6.11	11.6	13.4	11.4	6.05	2.77	5.41	11.1						
135	12.0	9.04	4.53	2.29	5.26	10.0	11.2	9.91	5.13	2.56	4.81	8.73						
140	10.3	7.61	3.88	2.20	4.56	8.63	9.09	8.48	4.40	2.39	4.11	7.33						
145	8.31	5.67	3.30	2.10	4.02	7.28	7.98	7.12	3.78	2.26	3.51	6.13						
150	7.10	4.59	2.86	2.06	3.61	5.89	6.61	5.69	3.29	2.18	3.06	4.81						
155	5.90	3.91	2.44	2.08	2.96	4.80	5.23	4.64	2.75	2.16	2.75	3.96						
160	4.44	3.17	2.30	2.11	2.75	3.96	4.04	3.77	2.54	2.16	2.53	3.43						
165	3.50	2.49	2.25	2.14	2.57	3.07	3.32	2.79	2.35	2.20	2.34	2.77						
170	2.43	2.30	2.21	2.21	2.46	2.65	2.27	2.52	2.29	2.25	2.33	2.55						
175	2.38	2.28	2.22	2.29	2.43	2.44	2.28	2.32	2.29	2.30	2.38	2.40						
180	2.33	2.29	2.27	2.32	2.42	2.42	2.31	2.29	2.29	2.32	2.40	2.41						

C Range: 0 - 360DEG
C Interval: 30.0DEG
Test Speed: HIGH
Temperature:25.3℃
Operators:
Test Date:2025-03-06

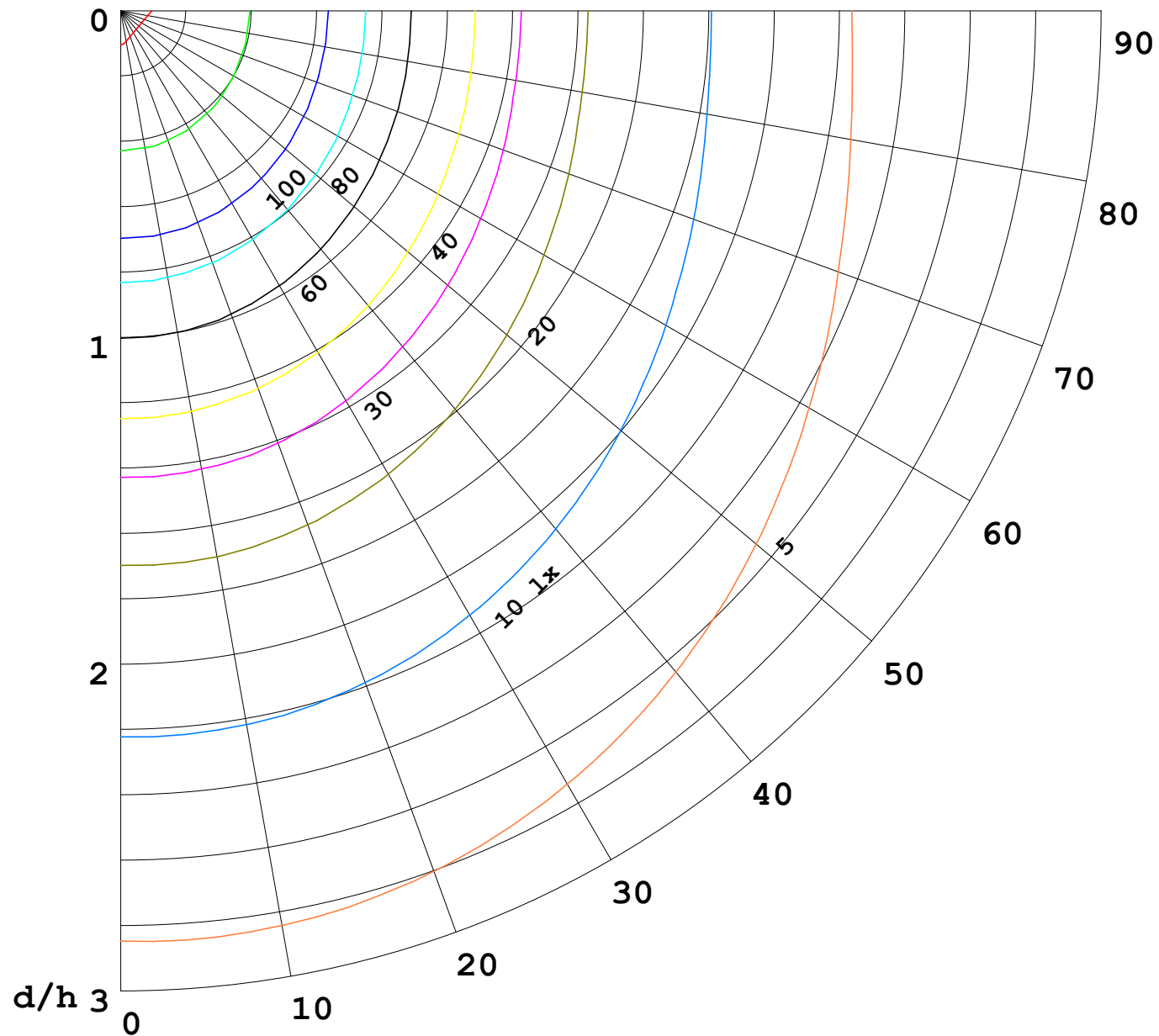
γ Range: 0 - 180DEG
γ Interval: 1.0DEG
Test System:EVERFINE GO-2000B_V1 SYSTEM V2.00.488
Humidity:65.0%
Test Distance:6.360m [K=1.0000]
Remarks:

I (cd)



1000 lm

$\kappa = 1$



F = 1000 lm
 K = 0.7
 Hcc = 0.8 m
 Hfc = 0.0 m
 Eave = 100 lx

	Pcc	Pw	Pfc
—————	70	50	30
—————	50	30	20

