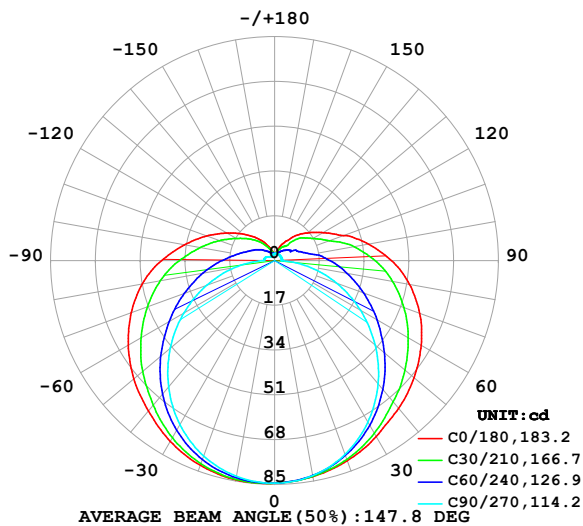


LUMINAIRE PHOTOMETRIC TEST REPORT

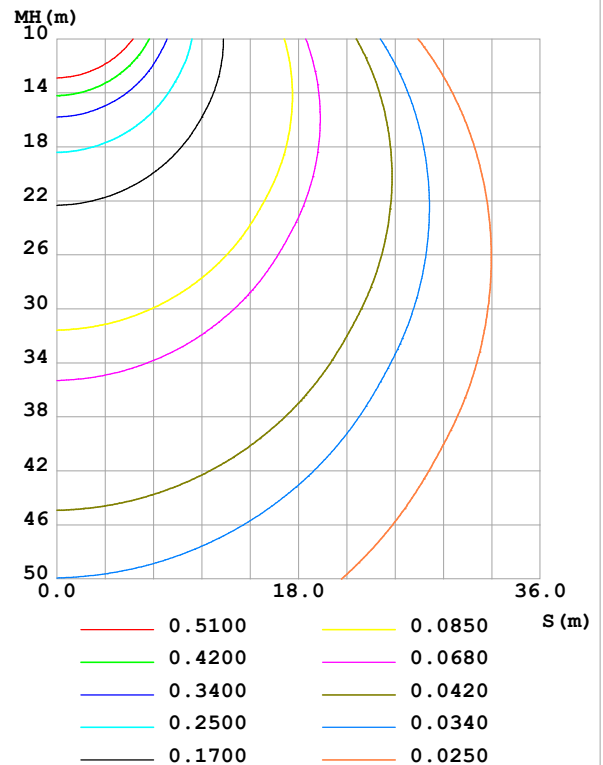
Test:U:24.00V I:0.4800A P:11.52W PF:1.000 Freq:0Hz Lamp Flux:418.218x1 lm		
NAME: SF21-24V-5050-60-5700K	TYPE:	WEIGHT:
SPEC.:	DIM.: Length=1m	SERIAL No.:
MFR.: OLympia lighting	SUR.:	Shielding Angle:

DATA OF LAMP		PHOTOMETRIC DATA Eff: 36.30 lm/W			
MODEL	5050	I _{max} (cd)	84.69	S/MH(C0/180)	1.41
NOMINAL POWER(W)	12	LOR(%)	100.0	S/MH(C90/270)	1.27
RATED VOLTAGE(V)	24	TOTAL FLUX(lm)	418.22	η UP,DN(C0-180)	10.1,39.8
NOMINAL FLUX(lm)	418.218	CIE CLASS	SEMI-D.	η UP,DN(C180-360)	9.9,40.2
LAMPS INSIDE	1	η up (%)	20.0	CIBSE SHR NOM	1.50
TEST VOLTAGE(V)		η down (%)	80.0	CIBSE SHR MAX	1.55

LUMINOUS INTENSITY DISTRIBUTION DIAGRAM



C0 PLANE ISOLUX DIAGRAM (UNIT:lx)



C Range: 0 - 360DEG
C Interval: 30.0DEG
Test Speed: HIGH
Temperature:25.3℃
Operators:
Test Date:2025-03-06

γ Range: 0 - 180DEG
γ Interval: 1.0DEG
Test System:EVERFINE GO-2000B_V1 SYSTEM V2.00.488
Humidity:65.0%
Test Distance:6.360m [K=1.0000]
Remarks:

ZONAL FLUX DIAGRAM

ZONAL FLUX DIAGRAM:

γ	C0	C45	C90	C135	C180	C225	C270	C315	γ	Φ zone	Φ total	%lum, lamp
10	83.27	83.04	82.92	83.86	84.53	84.03	83.18	83.22	0- 10	8.019	8.019	1.92,1.92
20	80.82	79.48	78.25	80.86	82.69	81.20	78.90	79.89	10- 20	23.22	31.24	7.47,7.47
30	77.13	73.98	70.83	75.60	79.22	76.01	71.91	74.57	20- 30	35.93	67.17	16.1,16.1
40	73.28	66.98	61.15	68.53	74.54	68.94	62.64	67.70	30- 40	44.86	112.0	26.8,26.8
50	69.13	59.51	49.83	60.58	69.79	60.91	51.72	60.26	40- 50	49.63	161.7	38.7,38.7
60	64.25	51.77	37.59	52.23	64.16	52.37	39.81	52.30	50- 60	50.26	211.9	50.7,50.7
70	58.66	44.11	25.05	44.03	57.90	43.93	27.43	44.35	60- 70	47.32	259.2	62,62
80	52.03	36.74	12.86	36.20	50.97	35.84	15.26	36.75	70- 80	41.56	300.8	71.9,71.9
90	44.42	29.65	2.616	28.61	42.94	28.10	4.321	29.51	80- 90	33.95	334.8	80,80
100	36.28	22.63	2.734	22.16	34.80	21.54	4.093	22.40	90-100	26.42	361.2	86.4,86.4
110	27.99	16.20	2.746	17.10	27.47	16.46	3.798	16.22	100-110	19.74	380.9	91.1,91.1
120	21.37	11.94	2.718	13.13	21.02	12.64	2.983	12.37	110-120	14.11	395.0	94.5,94.5
130	16.38	9.948	2.714	9.910	15.74	9.690	2.425	8.789	120-130	9.829	404.9	96.8,96.8
140	12.39	6.398	2.746	7.398	11.60	7.199	2.107	5.928	130-140	6.426	411.3	98.3,98.3
150	8.422	4.970	2.754	5.418	8.010	5.103	2.121	4.220	140-150	3.749	415.0	99.2,99.2
160	5.520	3.600	2.754	3.923	5.118	3.742	2.358	3.023	150-160	2.010	417.0	99.7,99.7
170	2.956	2.816	2.734	2.859	3.129	2.887	2.595	2.598	160-170	0.9123	418.0	99.9,99.9
180	2.779	2.780	2.714	2.654	2.793	2.786	2.702	2.683	170-180	0.2624	418.2	100,100
DEG	LUMINOUS INTENSITY:cd									UNIT:lm		

Conical surface Flux(90deg): 136.51 lm

%lum = 32.6%

%lamp = 32.6%

Conical surface Flux(130deg): 236.15 lm

%lum = 56.5%

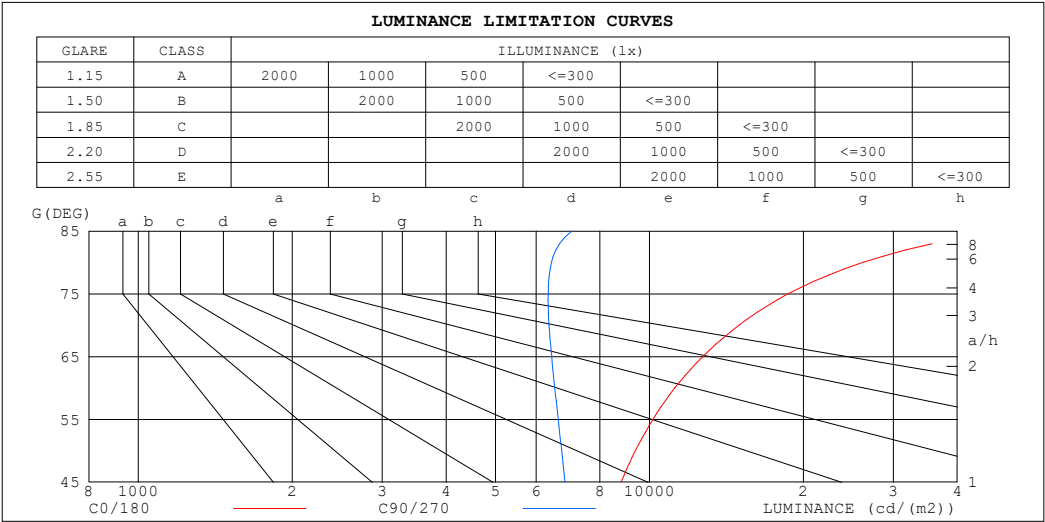
%lamp = 56.5%

C Range: 0 - 360DEG
 C Interval: 30.0DEG
 Test Speed: HIGH
 Temperature:25.3℃
 Operators:
 Test Date:2025-03-06

γ Range: 0 - 180DEG
 γ Interval: 1.0DEG
 Test System:EVERFINE GO-2000B_V1 SYSTEM V2.00.488
 Humidity:65.0%
 Test Distance:6.360m [K=1.0000]
 Remarks:

LUMINANCE LIMITATION CURVES

Test:U:24.00V I:0.4800A P:11.52W PF:1.000 Freq:0Hz Lamp Flux:418.218x1 lm		
NAME: SF21-24V-5050-60-5700K	TYPE:	WEIGHT:
SPEC.:	DIM.: Length=1m	SERIAL No.:
MFR.: OLympia lighting	SUR.:	Shielding Angle:



LUMINANCE cd/(m2)		
G (DEG)	C0/180	C90/270
85	48435	7050
80	26142	6429
75	18681	6337
70	14963	6361
65	12713	6438
60	11211	6527
55	10157	6628
50	9384	6732
45	8798	6835

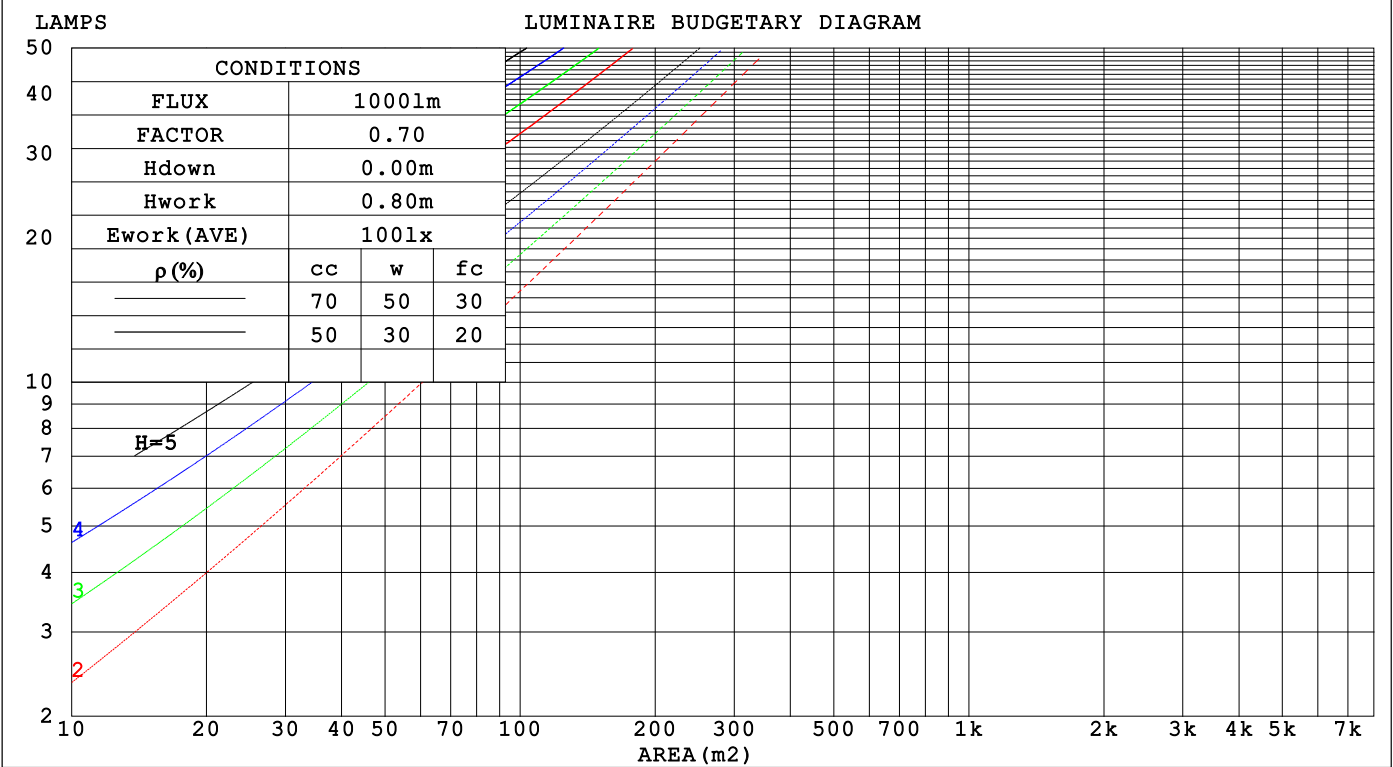
C Range: 0 - 360DEG
C Interval: 30.0DEG
Test Speed: HIGH
Temperature:25.3℃
Operators:
Test Date:2025-03-06

γ Range: 0 - 180DEG
γ Interval: 1.0DEG
Test System:EVERFINE GO-2000B_V1 SYSTEM V2.00.488
Humidity:65.0%
Test Distance:6.360m [K=1.0000]
Remarks:

CU AND LUMINAIRE BUDGETARY ESTIMATE DIAGRAM

Test:U:24.00V I:0.4800A P:11.52W PF:1.000 Freq:0Hz		
Lamp Flux:418.218x1 lm		
NAME: SF21-24V-5050-60-5700K	TYPE:	WEIGHT:
SPEC.:	DIM.: Length=1m	SERIAL No.:
MFR.: OLYMPIA lighting	SUR.:	Shielding Angle:

pcc	80%			70%			50%			30%			10%			0
pw	50%	30%	10%	50%	30%	10%	50%	30%	10%	50%	30%	10%	50%	30%	10%	0
pfc	20%			20%			20%			20%			20%			0
RCR	RCR:Room Cavity Ratio															



C Range: 0 - 360DEG
C Interval: 30.0DEG
Test Speed: HIGH
Temperature:25.3℃
Operators:
Test Date:2025-03-06

γ Range: 0 - 180DEG
γ Interval: 1.0DEG
Test System:EVERFINE GO-2000B_V1 SYSTEM V2.00.488
Humidity:65.0%
Test Distance:6.360m [K=1.0000]
Remarks:

WEC AND CCEC

Test:U:24.00V I:0.4800A P:11.52W PF:1.000 Freq:0Hz Lamp Flux:418.218x1 lm		
NAME: SF21-24V-5050-60-5700K	TYPE:	WEIGHT:
SPEC.:	DIM.: Length=1m	SERIAL No.:
MFR.: OLympia lighting	SUR.:	Shielding Angle:

pcc	80%			70%			50%			30%			10%			0														
pw	50%	30%	10%	50%	30%	10%	50%	30%	10%	50%	30%	10%	50%	30%	10%	0														
pfc	20%			20%			20%			20%			20%			0														
RCR	RCR:Room Cavity Ratio															Wall Exitance Coefficients(WEC)														
0.0																														
1.0	.395	.224	.071	.381	.218	.069	.356	.204	.065	.333	.192	.062	.312	.181	.058															
2.0	.339	.186	.057	.327	.180	.055	.304	.169	.053	.283	.159	.050	.264	.149	.047															
3.0	.300	.160	.048	.289	.155	.047	.268	.145	.044	.249	.137	.042	.232	.128	.040															
4.0	.269	.140	.041	.259	.136	.040	.241	.128	.038	.223	.120	.036	.207	.113	.034															
5.0	.244	.124	.036	.235	.121	.035	.218	.114	.033	.202	.107	.032	.188	.100	.030															
6.0	.223	.112	.032	.215	.109	.031	.200	.102	.030	.185	.096	.028	.172	.090	.027															
7.0	.206	.102	.029	.198	.099	.028	.184	.093	.027	.171	.088	.025	.158	.082	.024															
8.0	.191	.093	.026	.184	.090	.026	.171	.085	.024	.159	.080	.023	.147	.076	.022															
9.0	.177	.086	.024	.171	.083	.023	.159	.079	.022	.148	.074	.021	.137	.070	.020															
10.0	.166	.080	.022	.160	.077	.022	.149	.073	.021	.139	.069	.020	.129	.065	.019															

pcc	80%			70%			50%			30%			10%			0
pw	50%	30%	10%	50%	30%	10%	50%	30%	10%	50%	30%	10%	50%	30%	10%	0
pfc	20%			20%			20%			20%			20%			0
RCR	RCR:Room Cavity Ratio						Ceiling Cavity Exitance Coefficients (CCEC)									
0.0	.343	.343	.343	.293	.293	.293	.200	.200	.200	.115	.115	.115	.037	.037	.037	
1.0	.339	.309	.281	.290	.265	.242	.199	.182	.167	.114	.105	.097	.037	.034	.031	
2.0	.333	.286	.247	.285	.246	.213	.195	.170	.149	.113	.099	.087	.036	.032	.028	
3.0	.325	.270	.225	.279	.233	.195	.192	.162	.137	.111	.094	.081	.036	.031	.026	
4.0	.318	.257	.211	.273	.222	.183	.187	.155	.129	.108	.091	.076	.035	.030	.025	
5.0	.310	.248	.202	.266	.214	.175	.183	.150	.124	.106	.088	.073	.034	.029	.024	
6.0	.302	.240	.195	.260	.208	.169	.179	.145	.120	.104	.085	.071	.034	.028	.024	
7.0	.295	.233	.190	.254	.202	.165	.175	.142	.117	.102	.083	.070	.033	.027	.023	
8.0	.288	.228	.186	.248	.197	.162	.172	.139	.115	.100	.082	.068	.032	.027	.023	
9.0	.282	.223	.183	.243	.193	.159	.168	.136	.113	.098	.080	.067	.032	.026	.022	
10.0	.276	.219	.180	.238	.190	.157	.165	.134	.112	.096	.079	.067	.031	.026	.022	

C Range: 0 - 360DEG
C Interval: 30.0DEG
Test Speed: HIGH
Temperature:25.3℃
Operators:
Test Date:2025-03-06

γ Range: 0 - 180DEG
γ Interval: 1.0DEG
Test System:EVERFINE GO-2000B_V1 SYSTEM V2.00.488
Humidity:65.0%
Test Distance:6.360m [K=1.0000]
Remarks:

UGR(Unified Glare Rating) Table

Test:U:24.00V I:0.4800A P:11.52W PF:1.000 Freq:0Hz Lamp Flux:418.218x1 lm											
NAME: SF21-24V-5050-60-5700K						TYPE:		WEIGHT:			
SPEC.:						DIM.: Length=1m		SERIAL No.:			
MFR.: OLympia lighting						SUR.:		Shielding Angle:			
ceiling/cavity	0.7	0.7	0.5	0.5	0.3	0.7	0.7	0.5	0.5	0.3	
walls	0.5	0.3	0.5	0.3	0.3	0.5	0.3	0.5	0.3	0.3	
working plane	0.2	0.2	0.2	0.2	0.2	0.2	0.2	0.2	0.2	0.2	
Room dimensions		Viewed crosswise					Viewed endwise				
x = 2H y = 2H	2H	22.9	24.3	23.5	24.8	25.4	20.7	22.1	21.3	22.6	23.2
	3H	25.8	27.0	26.4	27.6	28.3	22.5	23.7	23.0	24.3	24.9
	4H	27.4	28.6	28.0	29.2	29.8	23.3	24.5	23.9	25.0	25.7
	6H	29.1	30.3	29.7	30.9	31.6	23.9	25.1	24.5	25.7	26.4
	8H	30.1	31.2	30.7	31.8	32.5	24.2	25.3	24.8	25.9	26.6
	12H	31.2	32.3	31.8	32.9	33.6	24.4	25.5	25.1	26.1	26.8
4H	2H	23.5	24.7	24.1	25.3	26.0	21.9	23.1	22.5	23.7	24.4
	3H	26.6	27.7	27.2	28.3	29.0	23.9	25.0	24.5	25.6	26.3
	4H	28.4	29.4	29.0	30.0	30.8	24.9	25.9	25.5	26.5	27.2
	6H	30.4	31.2	31.0	31.9	32.7	25.8	26.6	26.5	27.3	28.1
	8H	31.5	32.3	32.1	33.0	33.8	26.2	27.0	26.8	27.7	28.5
	12H	32.7	33.5	33.4	34.2	35.0	26.5	27.2	27.2	27.9	28.8
8H	4H	28.8	29.6	29.4	30.3	31.1	26.0	26.8	26.7	27.5	28.3
	6H	31.0	31.7	31.8	32.4	33.3	27.3	28.0	28.0	28.7	29.5
	8H	32.4	33.0	33.1	33.7	34.6	27.9	28.5	28.6	29.2	30.1
	12H	33.9	34.4	34.6	35.2	36.0	28.4	29.0	29.2	29.7	30.6
12H	4H	28.8	29.5	29.5	30.2	31.1	26.4	27.1	27.1	27.8	28.7
	6H	31.2	31.8	31.9	32.5	33.4	27.9	28.5	28.6	29.2	30.1
	8H	32.6	33.1	33.3	33.9	34.8	28.6	29.2	29.4	29.9	30.8
Variations with the observer position at spacings(CIE Pub.117):											
S = 1.0H		+ 0.1 / - 0.1					+ 0.1 / - 0.1				
1.5H		+ 0.2 / - 0.3					+ 0.2 / - 0.3				
2.0H		+ 0.2 / - 0.3					+ 0.2 / - 0.4				

CIE Pub.117, 418.2 lm Total Lamp Luminous Flux Correct (8log(F/F0) = -3.0)
Area: 0.0115 m2

C Range: 0 - 360DEG
C Interval: 30.0DEG
Test Speed: HIGH
Temperature:25.3℃
Operators:
Test Date:2025-03-06

γ Range: 0 - 180DEG
γ Interval: 1.0DEG
Test System:EVERFINE GO-2000B_V1 SYSTEM V2.00.488
Humidity:65.0%
Test Distance:6.360m [K=1.0000]
Remarks:

UTILIZATION FACTORS TABLE

Test:U:24.00V I:0.4800A P:11.52W PF:1.000 Freq:0Hz Lamp Flux:418.218x1 lm		
NAME: SF21-24V-5050-60-5700K	TYPE:	WEIGHT:
SPEC.:	DIM.: Length=1m	SERIAL No.:
MFR.: OLympia lighting	SUR.:	Shielding Angle:

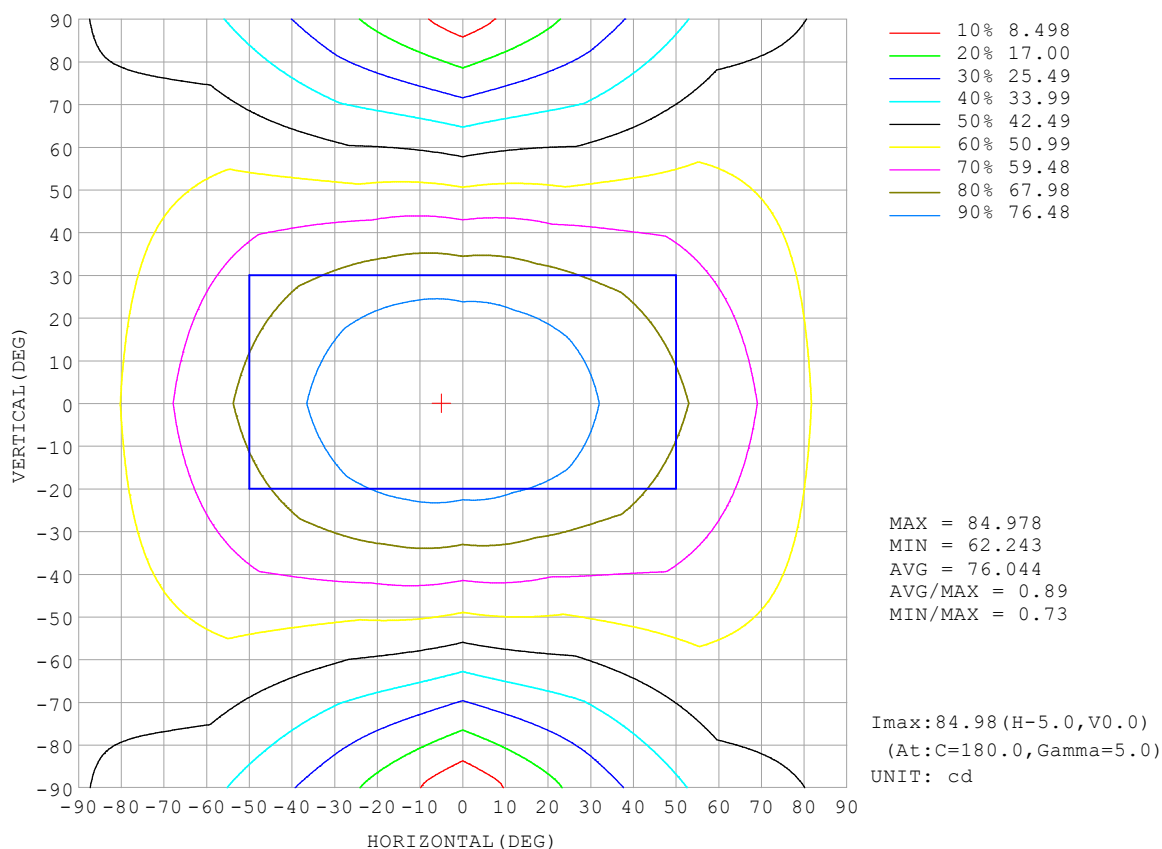
REFLECTANCE										
Ceiling	0.8	0.8	0.8	0.7	0.7	0.7	0.5	0.5	0.5	0
Walls	0.7	0.5	0.3	0.7	0.5	0.3	0.7	0.5	0.3	0
Working plane	0.2	0.2	0.2	0.2	0.2	0.2	0.2	0.2	0.2	0
ROOM INDEX	UTILIZATION FACTORS (PERCENT) $k(RI) \times RCR = 5$									
$k = 0.60$	47	34	27	45	34	27	43	33	26	19
0.80	56	43	34	54	42	34	51	40	33	25
1.00	63	50	42	61	49	41	58	49	40	31
1.25	70	57	49	68	56	48	63	53	46	36
1.50	75	63	54	73	61	53	67	58	51	40
2.00	83	71	63	79	69	61	73	65	58	46
2.50	87	77	68	84	74	67	77	69	63	50
3.00	91	81	74	87	79	72	80	73	67	54
4.00	96	88	81	92	84	78	84	78	73	58
5.00	99	92	86	95	88	83	87	82	77	61
ROOM INDEX	UF (total)									Direct
According to DIN EN 13032-2 2004			Suspended					SHRNOM = 1.25		

C Range: 0 - 360DEG
 C Interval: 30.0DEG
 Test Speed: HIGH
 Temperature: 25.3 °C
 Operators:
 Test Date: 2025-03-06

γ Range: 0 - 180DEG
 γ Interval: 1.0DEG
 Test System: EVERFINE GO-2000B_V1 SYSTEM V2.00.488
 Humidity: 65.0%
 Test Distance: 6.360m [K=1.0000]
 Remarks:

ISOCANDELA DIAGRAM

Test:U:24.00V I:0.4800A P:11.52W PF:1.000 Freq:0Hz Lamp Flux:418.218x1 lm		
NAME: SF21-24V-5050-60-5700K	TYPE:	WEIGHT:
SPEC.:	DIM.: Length=1m	SERIAL No.:
MFR.: OLympia lighting	SUR.:	Shielding Angle:

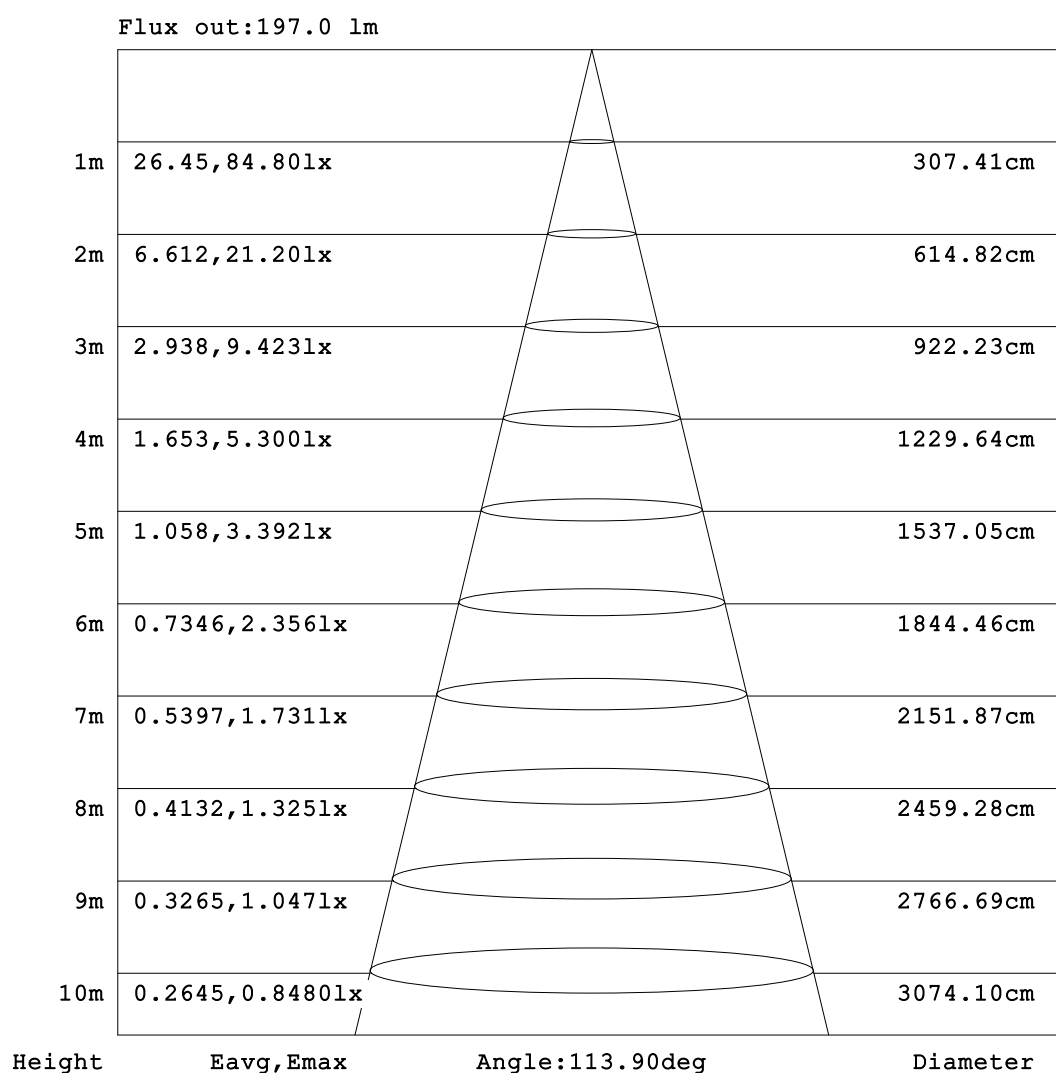


C Range: 0 - 360DEG
C Interval: 30.0DEG
Test Speed: HIGH
Temperature:25.3℃
Operators:
Test Date:2025-03-06

γ Range: 0 - 180DEG
γ Interval: 1.0DEG
Test System:EVERFINE GO-2000B_V1 SYSTEM V2.00.488
Humidity:65.0%
Test Distance:6.360m [K=1.0000]
Remarks:

AAI Figure

Test:U:24.00V I:0.4800A P:11.52W PF:1.000 Freq:0Hz Lamp Flux:418.218lx 1m		
NAME: SF21-24V-5050-60-5700K	TYPE:	WEIGHT:
SPEC.:	DIM.: Length=1m	SERIAL No.:
MFR.: OLympia lighting	SUR.:	Shielding Angle:



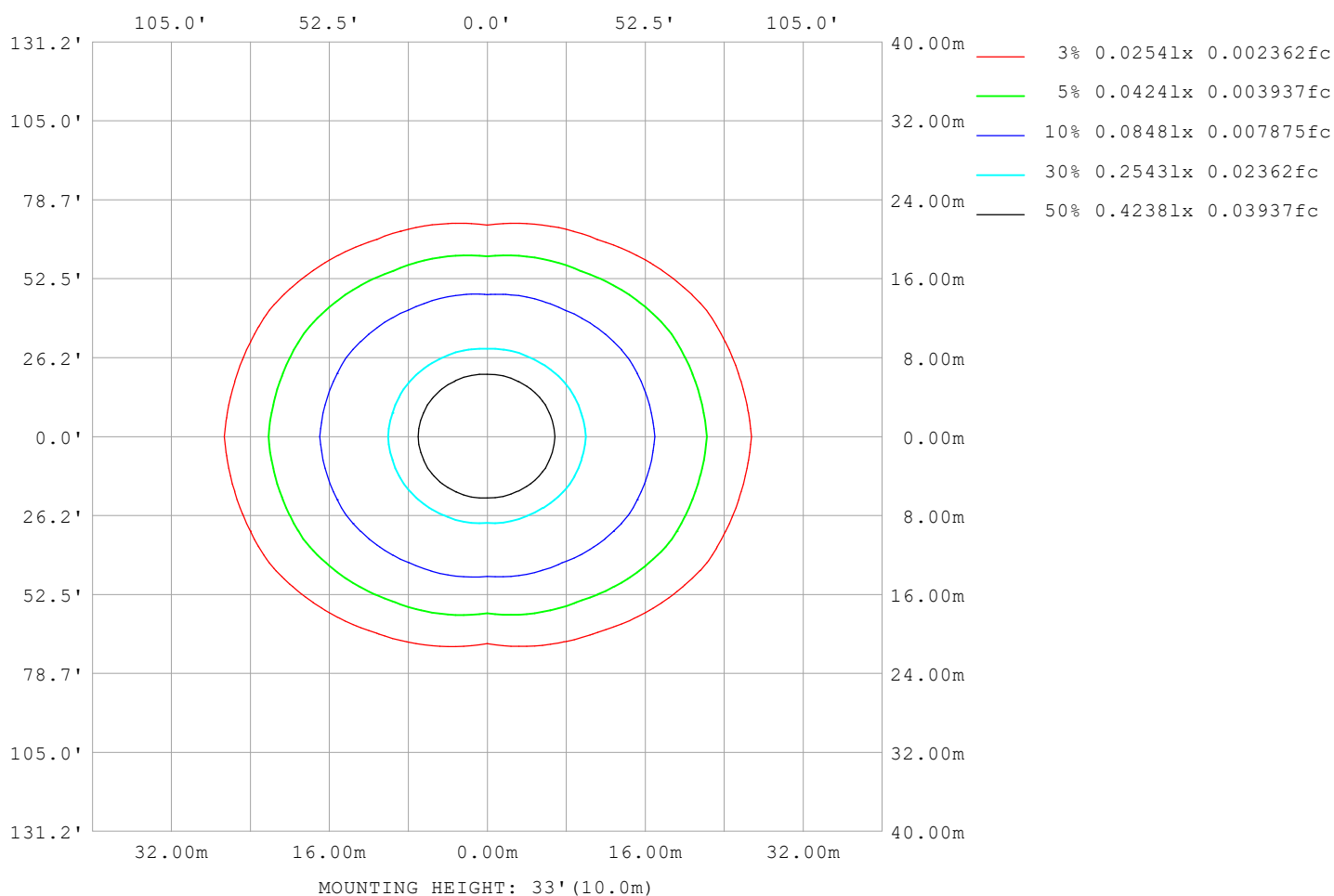
Note:The Curves indicate the illuminated area and the average illumination when the luminaire is at different distance.

C Range: 0 - 360DEG
C Interval: 30.0DEG
Test Speed: HIGH
Temperature:25.3℃
Operators:
Test Date:2025-03-06

γ Range: 0 - 180DEG
γ Interval: 1.0DEG
Test System:EVERFINE GO-2000B_V1 SYSTEM V2.00.488
Humidity:65.0%
Test Distance:6.360m [K=1.0000]
Remarks:

ISOLUX DIAGRAM

Test:U:24.00V I:0.4800A P:11.52W PF:1.000 Freq:0Hz Lamp Flux:418.218x1 lm		
NAME: SF21-24V-5050-60-5700K	TYPE:	WEIGHT:
SPEC.:	DIM.: Length=1m	SERIAL No.:
MFR.: OLympia lighting	SUR.:	Shielding Angle:



C Range: 0 - 360DEG
C Interval: 30.0DEG
Test Speed: HIGH
Temperature: 25.3°C
Operators:
Test Date: 2025-03-06

γ Range: 0 - 180DEG
γ Interval: 1.0DEG
Test System: EVERFINE GO-2000B_V1 SYSTEM V2.00.488
Humidity: 65.0%
Test Distance: 6.360m [K=1.0000]
Remarks:

LED Avg.L Report

Test:U:24.00V I:0.4800A P:11.52W PF:1.000 Freq:0Hz Lamp Flux:418.218x1 lm		
NAME: SF21-24V-5050-60-5700K	TYPE:	WEIGHT:
SPEC.:	DIM.: Length=1m	SERIAL No.:
MFR.: OLympia lighting	SUR.:	Shielding Angle:

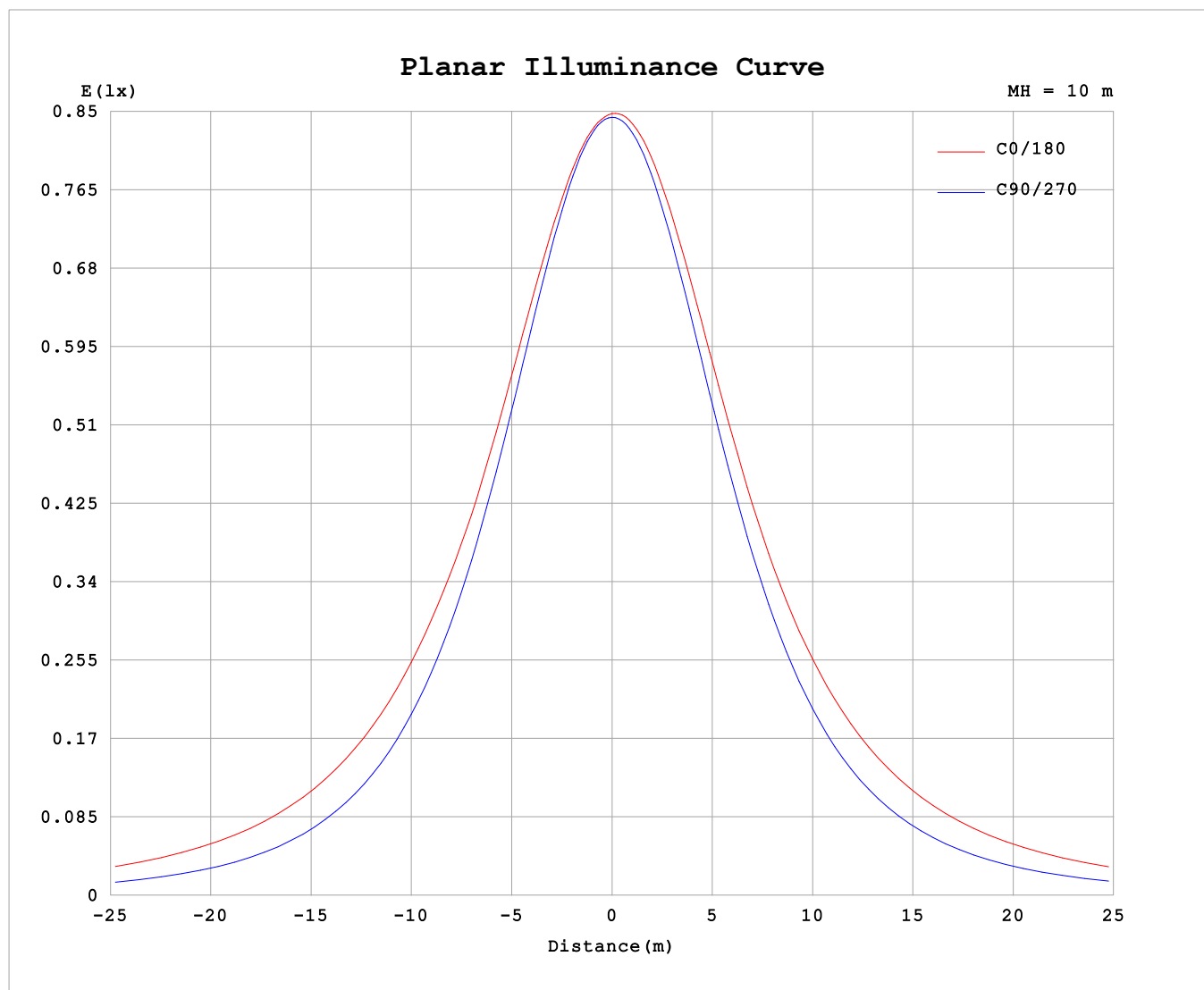
AvgL	cd/m2
L_0~180 (65) av	12621
L_0~180 (75) av	18468
L_0~180 (85) av	47649
L_90~270 (65) av	6684
L_90~270 (75) av	6749
L_90~270 (85) av	8207
L_45 (65) av	9933
L_45 (75) av	13611
L_45 (85) av	33173

Standard: GB/T 29293-2012

C Range: 0 - 360DEG
C Interval: 30.0DEG
Test Speed: HIGH
Temperature:25.3℃
Operators:
Test Date:2025-03-06

γ Range: 0 - 180DEG
γ Interval: 1.0DEG
Test System:EVERFINE GO-2000B_V1 SYSTEM V2.00.488
Humidity:65.0%
Test Distance:6.360m [K=1.0000]
Remarks:

Planar Illuminance Curve



C Range: 0 - 360DEG
C Interval: 30.0DEG
Test Speed: HIGH
Temperature: 25.3 °C
Operators:
Test Date: 2025-03-06

γ Range: 0 - 180DEG
 γ Interval: 1.0DEG
Test System: EVERFINE GO-2000B_V1 SYSTEM V2.00.488
Humidity: 65.0%
Test Distance: 6.360m [K=1.0000]
Remarks:

LUMINOUS DISTRIBUTION INTENSITY DATA

Test:U:24.00V I:0.4800A P:11.52W PF:1.000 Freq:0Hz Lamp Flux:418.218x1 lm											
NAME: SF21-24V-5050-60-5700K						TYPE:			WEIGHT:		
SPEC.:						DIM.: Length=1m			SERIAL No.:		
MFR.: Olym pia lighting						SUR.:			Shielding Angle:		

Table--1

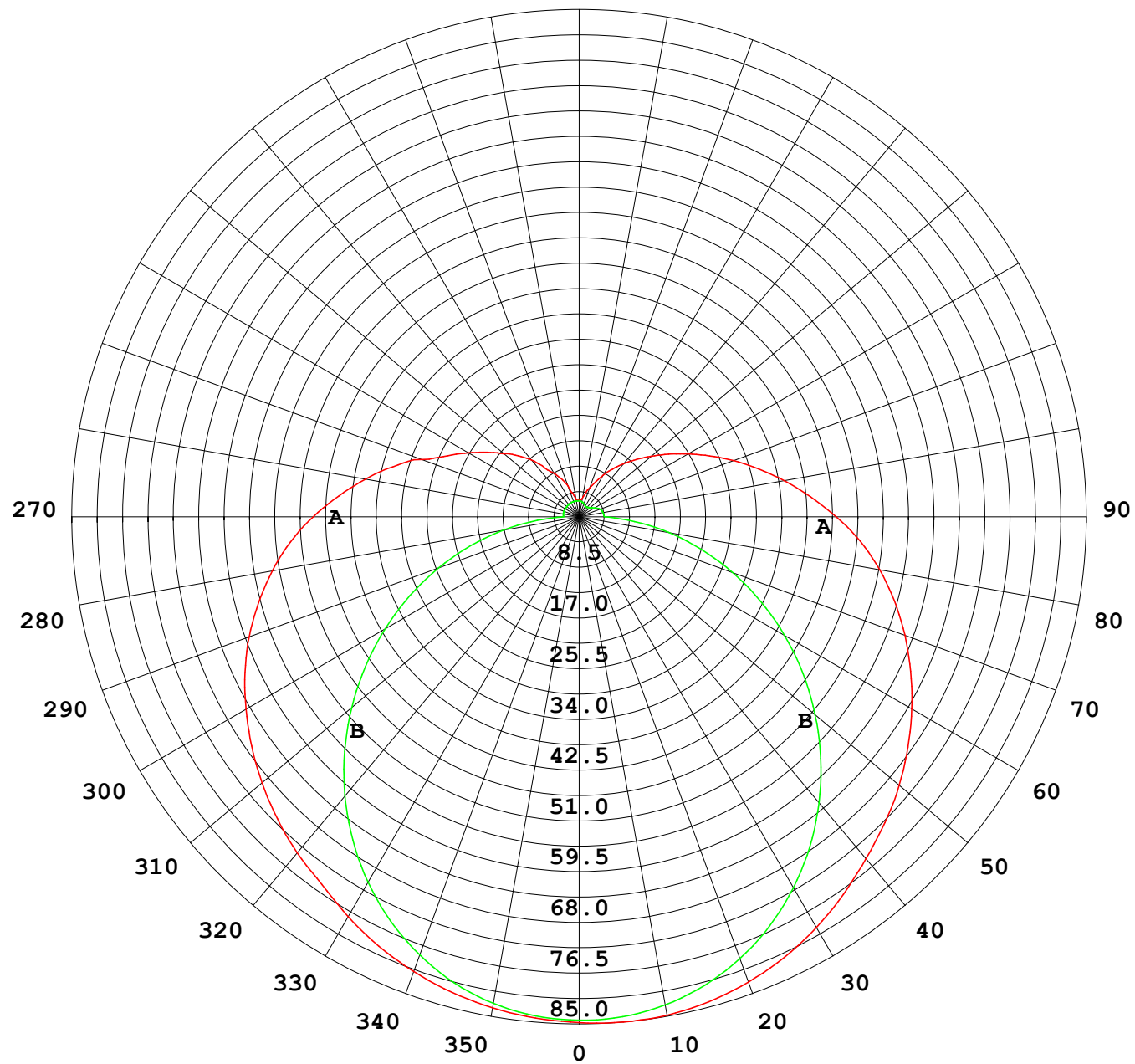
UNIT: cd

C (DEG) γ (DEG)	0	30	60	90	120	150	180	210	240	270	300	330							
0	84.5	84.5	84.5	84.5	84.5	84.5	84.5	84.5	84.5	84.5	84.5	84.5							
5	84.0	84.0	84.0	84.1	84.3	84.5	84.7	84.6	84.4	84.2	84.1	84.1							
10	83.3	83.2	82.9	82.9	83.5	84.2	84.5	84.3	83.7	83.2	83.1	83.3							
15	82.2	81.9	81.1	81.0	82.0	83.3	83.8	83.5	82.4	81.4	81.5	82.1							
20	80.8	80.3	78.7	78.3	79.9	81.8	82.7	82.0	80.4	78.9	79.3	80.5							
25	79.1	78.2	75.7	74.9	77.1	79.9	81.2	80.1	77.7	75.7	76.5	78.4							
30	77.1	75.7	72.2	70.8	73.7	77.5	79.2	77.7	74.4	71.9	73.2	76.0							
35	75.0	72.9	68.3	66.2	69.8	74.7	77.0	74.8	70.5	67.5	69.3	73.2							
40	73.3	70.1	63.9	61.2	65.5	71.6	74.5	71.7	66.2	62.6	65.1	70.3							
45	71.3	67.5	59.3	55.7	60.8	68.4	72.2	68.5	61.5	57.3	60.6	67.7							
50	69.1	64.6	54.4	49.8	55.8	65.3	69.8	65.4	56.4	51.7	55.7	64.8							
55	66.8	61.7	49.5	43.8	50.8	62.0	67.1	62.0	51.2	45.9	50.7	61.7							
60	64.2	58.6	44.9	37.6	45.8	58.7	64.2	58.6	46.2	39.8	46.0	58.6							
65	61.6	55.5	40.4	31.3	41.1	55.2	61.1	55.0	41.3	33.6	41.2	55.4							
70	58.7	52.3	35.9	25.1	36.4	51.6	57.9	51.3	36.5	27.4	36.5	52.2							
75	55.4	48.9	31.8	18.9	32.0	48.1	54.5	47.7	31.9	21.3	32.1	48.9							
80	52.0	45.5	28.0	12.9	28.0	44.4	51.0	44.0	27.6	15.3	28.1	45.4							
85	48.4	42.0	24.4	7.08	24.2	40.7	47.1	40.2	23.7	9.38	24.4	41.8							
90	44.4	38.2	21.1	2.62	20.6	36.6	42.9	36.2	20.0	4.32	21.0	38.0							
95	40.3	34.3	18.2	2.68	17.6	32.8	38.8	32.3	16.9	4.17	18.0	34.2							
100	36.3	30.7	14.5	2.73	15.1	29.2	34.8	28.7	14.4	4.09	14.3	30.5							
105	32.3	26.6	11.8	2.75	13.1	25.9	31.0	25.4	12.3	4.00	11.3	26.4							
110	28.0	22.2	10.2	2.75	11.4	22.8	27.5	22.3	10.6	3.80	9.59	22.9							
115	24.2	19.3	9.20	2.73	10.2	19.9	24.1	19.5	9.35	3.42	7.77	19.8							
120	21.4	16.9	6.96	2.72	8.88	17.4	21.0	17.0	8.32	2.98	7.35	17.4							
125	18.8	15.1	6.87	2.71	7.72	15.2	18.3	14.8	7.41	2.67	6.02	15.1							
130	16.4	13.5	6.38	2.71	6.53	13.3	15.7	12.9	6.48	2.43	5.17	12.4							
135	14.4	11.4	5.63	2.73	5.51	11.6	13.6	11.2	5.49	2.24	4.61	11.0							
140	12.4	7.76	5.03	2.75	4.83	9.96	11.6	9.60	4.79	2.11	4.05	7.81							
145	9.99	6.81	4.40	2.75	4.41	8.40	9.76	8.03	4.22	2.08	3.56	6.45							
150	8.42	6.05	3.89	2.75	3.96	6.87	8.01	6.50	3.70	2.12	3.06	5.38							
155	7.00	5.04	3.34	2.75	3.43	5.64	6.39	5.36	3.14	2.25	2.65	3.98							
160	5.52	4.14	3.06	2.75	3.14	4.71	5.12	4.54	2.95	2.36	2.53	3.52							
165	4.06	3.32	2.82	2.75	2.91	3.54	4.00	3.50	2.79	2.49	2.49	2.76							
170	2.96	2.87	2.76	2.73	2.79	2.93	3.13	3.07	2.71	2.60	2.54	2.65							
175	2.75	2.79	2.76	2.71	2.73	2.64	2.83	2.84	2.72	2.66	2.61	2.64							
180	2.78	2.80	2.76	2.71	2.68	2.63	2.79	2.80	2.77	2.70	2.70	2.67							

C Range: 0 - 360DEG
C Interval: 30.0DEG
Test Speed: HIGH
Temperature:25.3℃
Operators:
Test Date:2025-03-06

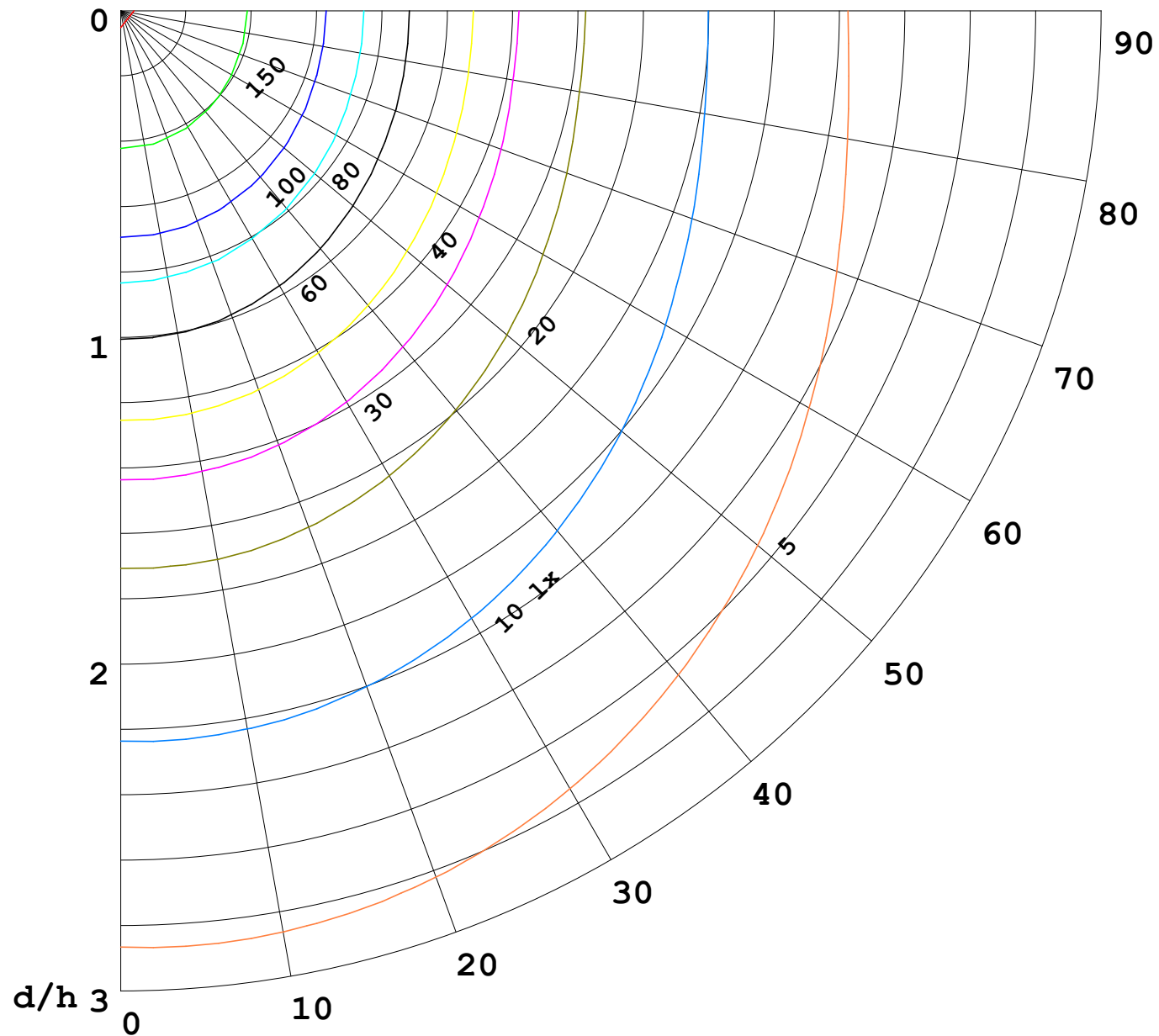
γ Range: 0 - 180DEG
γ Interval: 1.0DEG
Test System:EVERFINE GO-2000B_V1 SYSTEM V2.00.488
Humidity:65.0%
Test Distance:6.360m [K=1.0000]
Remarks:

I (cd)



1000 lm

$\kappa = 1$



F = 1000 lm
 K = 0.7
 Hcc = 0.8 m
 Hfc = 0.0 m
 Eave = 100 lx

	Pcc	Pw	Pfc
————	70	50	30
————	50	30	20

