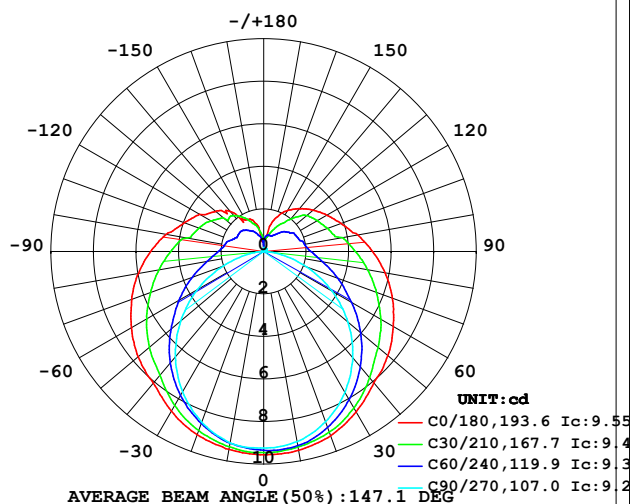


LUMINAIRE PHOTOMETRIC TEST REPORT

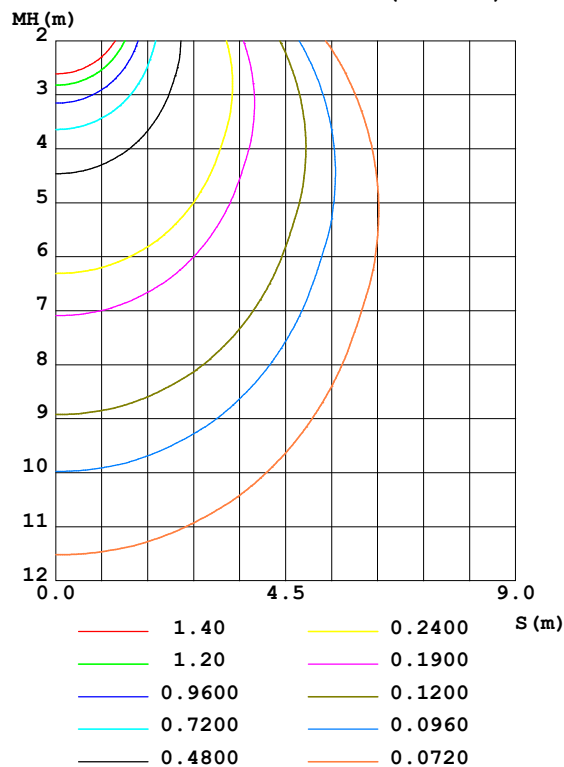
Test:U:24.00V I:0.2350A P:5.640W PF:1.000 Freq:0Hz Lamp Flux:48.105x1 lm		
NAME: SF21-24V-3528-72-A	TYPE: 硅胶	WEIGHT:
SPEC.:	DIM.: 28mm*11.5mm	SERIAL No.:2021113003
MFR.: OLYMPIA	SUR.:1*0.016	Shielding Angle:

DATA OF LAMP		PHOTOMETRIC DATA				Eff: 8.53 lm/W
MODEL	3528	I _{max} (cd)	9.554	S/MH (C0/180)	1.36	
NOMINAL POWER (W)	5	LOR (%)	100.0	S/MH (C90/270)	1.23	
RATED VOLTAGE (V)	24	TOTAL FLUX (lm)	48.105	η UP, DN (C0-180)	12.9, 36.8	
NOMINAL FLUX (lm)	48.105	CIE CLASS	SEMI-D.	η UP, DN (C180-360)	13.1, 37.2	
LAMPS INSIDE	1	η up (%)	26.0	CIBSE SHR NOM	1.50	
TEST VOLTAGE (V)	24.0	η down (%)	74.0	CIBSE SHR MAX	1.50	

LUMINOUS INTENSITY DISTRIBUTION DIAGRAM



C0 PLANE ISOLUX DIAGRAM (UNIT:lx)



C Range: 0 - 360DEG
C Interval: 30.0DEG
Test Speed: HIGH
Temperature: 25.3DEG
Operators: LPC
Test Date: 2021-11-30

γ Range: 0 - 180DEG
γ Interval: 1.0DEG
Test System: EVERFINE GO-2000B_V1 SYSTEM V2.0.362
Humidity: 65.0%
Test Distance: 9.200m [K=1.0000]
Remarks:

ZONAL FLUX DIAGRAM

ZONAL FLUX DIAGRAM:

γ	C0	C45	C90	C135	C180	C225	C270	C315	γ	Φ zone	Φ total	%lum, lamp
10	9.489	9.303	9.071	8.986	9.448	9.235	9.132	9.141	0- 10	0.8848	0.8848	1.84,1.84
20	9.218	8.918	8.518	8.531	9.162	8.782	8.539	8.757	10- 20	2.549	3.434	7.14,7.14
30	8.700	8.268	7.648	7.835	8.679	8.096	7.625	8.137	20- 30	3.909	7.343	15.3,15.3
40	8.067	7.413	6.517	6.979	8.076	7.217	6.469	7.320	30- 40	4.817	12.16	25.3,25.3
50	7.620	6.491	5.175	6.129	7.704	6.355	5.097	6.420	40- 50	5.266	17.43	36.2,36.2
60	7.037	5.564	3.702	5.290	7.181	5.478	3.615	5.558	50- 60	5.292	22.72	47.2,47.2
70	6.444	4.682	2.165	4.448	6.608	4.623	2.042	4.699	60- 70	4.930	27.65	57.5,57.5
80	5.795	3.888	0.7629	3.704	5.985	3.855	0.6593	3.922	70- 80	4.311	31.96	66.4,66.4
90	5.122	3.267	0.1365	3.141	5.312	3.254	0.0704	3.307	80- 90	3.627	35.59	74,74
100	4.504	2.869	0.1256	2.681	4.658	2.770	0.0704	2.897	90-100	3.110	38.70	80.4,80.4
110	3.870	2.473	0.1319	2.252	3.970	2.424	0.0704	2.512	100-110	2.573	41.27	85.8,85.8
120	3.428	2.294	0.1450	1.984	3.502	2.151	0.0704	2.267	110-120	2.147	43.41	90.2,90.2
130	3.036	2.028	0.1575	1.851	2.945	1.963	0.0754	2.033	120-130	1.734	45.15	93.9,93.9
140	2.629	1.563	0.1679	1.643	2.462	1.764	0.1105	1.566	130-140	1.304	46.45	96.6,96.6
150	2.222	1.156	0.1770	1.349	1.719	1.465	0.1357	1.164	140-150	0.8600	47.31	98.4,98.4
160	1.669	0.8746	0.1800	1.023	1.573	1.141	0.1362	0.9238	150-160	0.5077	47.82	99.4,99.4
170	0.6536	0.6961	0.1805	0.6810	0.5173	0.7966	0.1400	0.7669	160-170	0.2347	48.05	99.9,99.9
180	0.2061	0.1860	0.1809	0.1885	0.2111	0.1985	0.1407	0.1759	170-180	0.0501	48.11	100,100
DEG	LUMINOUS INTENSITY:cd									UNIT:lm		

Conical surface Flux(90deg): 14.763 lm

%lum = 30.7%

%lamp = 30.7%

Conical surface Flux(120deg): 22.718 lm

%lum = 47.2%

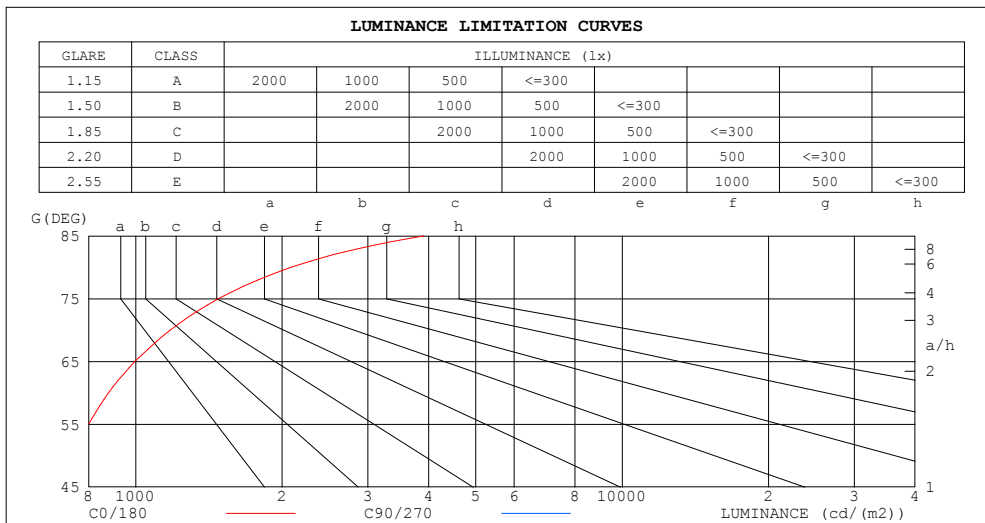
%lamp = 47.2%

C Range: 0 - 360DEG
 C Interval: 30.0DEG
 Test Speed: HIGH
 Temperature:25.3DEG
 Operators:LPC
 Test Date:2021-11-30

γ Range: 0 - 180DEG
 γ Interval: 1.0DEG
 Test System:EVERFINE GO-2000B_V1 SYSTEM V2.0.362
 Humidity:65.0%
 Test Distance:9.200m [K=1.0000]
 Remarks:

LUMINANCE LIMITATION CURVES

Test:U:24.00V I:0.2350A P:5.640W PF:1.000 Freq:0Hz Lamp Flux:48.105x1 lm		
NAME: SF21-24V-3528-72-A	TYPE: 硅胶	WEIGHT:
SPEC.:	DIM.: 28mm*11.5mm	SERIAL No.:2021113003
MFR.: OLYMPIA	SUR.:1*0.016	Shielding Angle:



LUMINANCE cd/(m2)		
G (DEG)	C0/180	C90/270
85	3911	173
80	2086	275
75	1480	347
70	1177	396
65	996	433
60	880	463
55	800	484
50	741	503
45	696	518

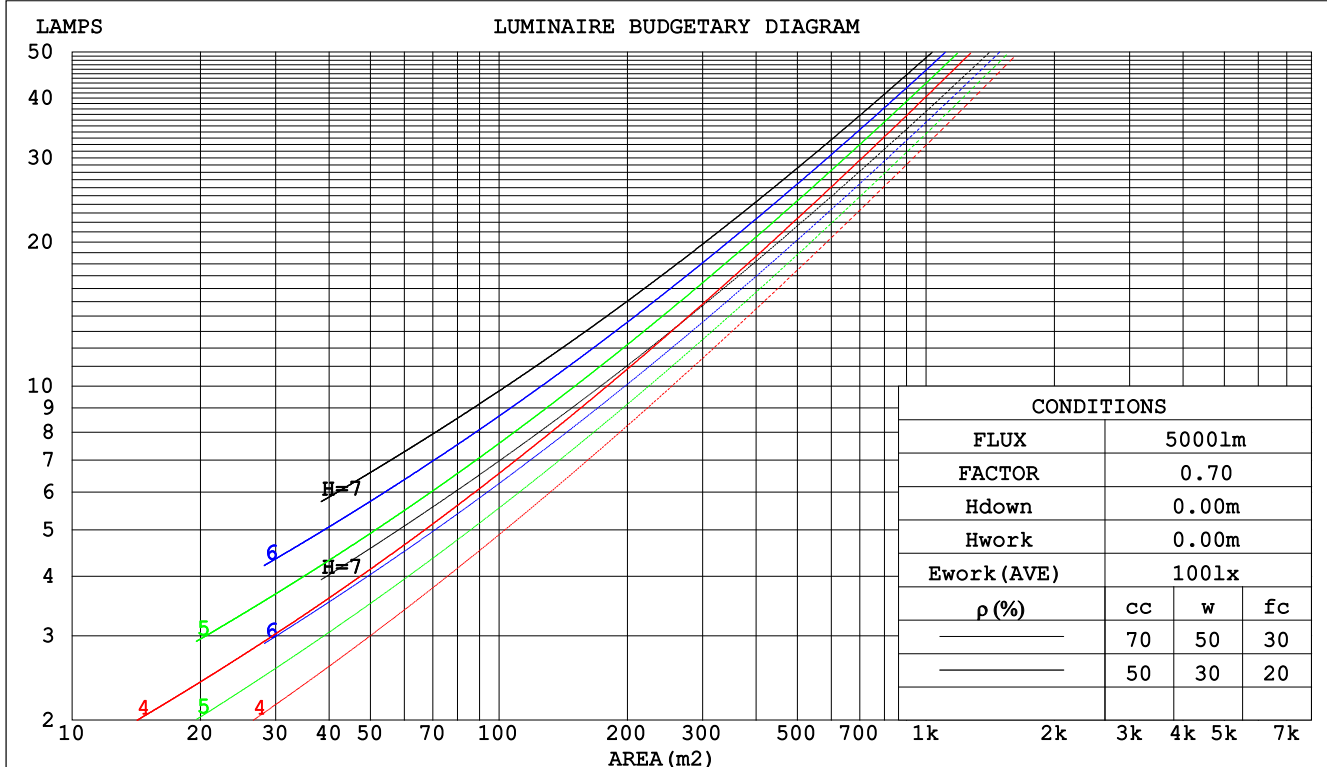
C Range: 0 - 360DEG
C Interval: 30.0DEG
Test Speed: HIGH
Temperature:25.3DEG
Operators:LPC
Test Date:2021-11-30

γ Range: 0 - 180DEG
γ Interval: 1.0DEG
Test System:EVERFINE GO-2000B_V1 SYSTEM V2.0.362
Humidity:65.0%
Test Distance:9.200m [K=1.0000]
Remarks:

CU AND LUMINAIRE BUDGETARY ESTIMATE DIAGRAM

Test:U:24.00V I:0.2350A P:5.640W PF:1.000 Freq:0Hz Lamp Flux:48.105x1 lm		
NAME: SF21-24V-3528-72-A	TYPE: 硅胶	WEIGHT:
SPEC.:	DIM.: 28mm*11.5mm	SERIAL No.:2021113003
MFR.: OLYMPIA	SUR.:1*0.016	Shielding Angle:

pcc	80%			70%			50%			30%			10%			0
pw	50%	30%	10%	50%	30%	10%	50%	30%	10%	50%	30%	10%	50%	30%	10%	0
pfc	20%			20%			20%			20%			20%			0
RCR	RCR:Room Cavity Ratio						Coefficients of Utilization(CU)									
0.0	1.13	1.13	1.13	1.07	1.07	1.07	.97	.97	.97	.87	.87	.87	.78	.78	.78	.74
1.0	.94	.89	.84	.89	.84	.80	.80	.76	.73	.71	.69	.66	.64	.61	.59	.55
2.0	.80	.72	.66	.76	.69	.63	.68	.63	.58	.61	.56	.53	.54	.51	.48	.44
3.0	.70	.61	.54	.66	.58	.51	.59	.53	.47	.53	.48	.43	.47	.43	.39	.36
4.0	.61	.52	.45	.58	.49	.43	.52	.45	.40	.47	.41	.36	.42	.37	.33	.30
5.0	.54	.45	.38	.52	.43	.36	.46	.39	.34	.42	.36	.31	.37	.32	.28	.25
6.0	.48	.39	.33	.46	.38	.31	.42	.35	.29	.38	.32	.27	.34	.29	.25	.22
7.0	.44	.35	.29	.42	.33	.28	.38	.31	.26	.34	.28	.24	.31	.26	.22	.19
8.0	.40	.31	.25	.38	.30	.24	.34	.28	.23	.31	.25	.21	.28	.23	.19	.17
9.0	.36	.28	.22	.35	.27	.22	.32	.25	.20	.29	.23	.19	.26	.21	.17	.15
10.0	.33	.25	.20	.32	.24	.19	.29	.23	.18	.27	.21	.17	.24	.19	.16	.14



C Range: 0 - 360DEG
 C Interval: 30.0DEG
 Test Speed: HIGH
 Temperature:25.3DEG
 Operators:LPC
 Test Date:2021-11-30

γ Range: 0 - 180DEG
 γ Interval: 1.0DEG
 Test System:EVERFINE GO-2000B_V1 SYSTEM V2.0.362
 Humidity:65.0%
 Test Distance:9.200m [K=1.0000]
 Remarks:

WEC AND CCEC

Test:U:24.00V I:0.2350A P:5.640W PF:1.000 Freq:0Hz Lamp Flux:48.105x1 lm		
NAME: SF21-24V-3528-72-A	TYPE: 硅胶	WEIGHT:
SPEC.:	DIM.: 28mm*11.5mm	SERIAL No.:2021113003
MFR.: OLYMPIA	SUR.:1*0.016	Shielding Angle:

pcc	80%			70%			50%			30%			10%			0	
pw	50%	30%	10%	50%	30%	10%	50%	30%	10%	50%	30%	10%	50%	30%	10%	0	
pfc	20%			20%			20%			20%			20%			0	
RCR	RCR:Room Cavity Ratio						Wall Exitance Coefficients(WEC)										
0.0																	
1.0	.383	.218	.069	.368	.210	.067	.339	.195	.062	.313	.181	.058	.289	.168	.054		
2.0	.330	.181	.055	.316	.174	.054	.290	.161	.050	.266	.149	.047	.244	.138	.044		
3.0	.292	.155	.047	.280	.150	.045	.256	.139	.042	.235	.129	.039	.215	.119	.037		
4.0	.263	.137	.040	.251	.132	.039	.230	.122	.036	.210	.113	.034	.192	.104	.032		
5.0	.239	.122	.035	.228	.117	.034	.209	.109	.032	.191	.101	.030	.174	.093	.028		
6.0	.219	.110	.031	.209	.106	.030	.192	.098	.029	.175	.091	.027	.159	.084	.025		
7.0	.202	.100	.028	.193	.096	.027	.177	.089	.026	.161	.083	.024	.147	.076	.022		
8.0	.187	.091	.026	.179	.088	.025	.164	.082	.023	.150	.076	.022	.137	.070	.020		
9.0	.174	.084	.024	.167	.081	.023	.153	.076	.021	.140	.070	.020	.128	.065	.019		
10.0	.163	.078	.022	.156	.076	.021	.143	.070	.020	.131	.065	.019	.120	.060	.017		

pcc	80%			70%			50%			30%			10%			0	
pw	50%	30%	10%	50%	30%	10%	50%	30%	10%	50%	30%	10%	50%	30%	10%	0	
pfc	20%			20%			20%			20%			20%			0	
RCR	RCR:Room Cavity Ratio						Ceiling Cavity Exitance Coefficients(CCEC)										
0.0	.389	.389	.389	.332	.332	.332	.227	.227	.227	.130	.130	.130	.042	.042	.042		
1.0	.385	.355	.329	.330	.305	.283	.225	.210	.196	.130	.121	.114	.042	.039	.037		
2.0	.379	.333	.295	.324	.287	.255	.222	.198	.178	.128	.115	.104	.041	.037	.034		
3.0	.371	.317	.274	.318	.273	.237	.218	.190	.166	.126	.111	.098	.041	.036	.032		
4.0	.363	.305	.260	.312	.263	.225	.214	.183	.159	.124	.107	.094	.040	.035	.031		
5.0	.356	.295	.250	.306	.255	.217	.211	.178	.154	.122	.105	.091	.039	.034	.030		
6.0	.349	.287	.243	.300	.249	.212	.207	.174	.150	.120	.102	.089	.039	.033	.029		
7.0	.342	.281	.238	.294	.243	.207	.203	.171	.147	.118	.100	.087	.038	.033	.029		
8.0	.335	.275	.234	.288	.239	.204	.200	.168	.145	.116	.099	.086	.038	.032	.029		
9.0	.329	.270	.231	.283	.235	.201	.196	.165	.143	.114	.097	.085	.037	.032	.028		
10.0	.323	.266	.229	.279	.231	.199	.193	.163	.142	.113	.096	.085	.037	.032	.028		

C Range: 0 - 360DEG
 C Interval: 30.0DEG
 Test Speed: HIGH
 Temperature:25.3DEG
 Operators:LPC
 Test Date:2021-11-30

γ Range: 0 - 180DEG
 γ Interval: 1.0DEG
 Test System:EVERFINE GO-2000B_V1 SYSTEM V2.0.362
 Humidity:65.0%
 Test Distance:9.200m [K=1.0000]
 Remarks:

UGR(Unified Glare Rating) Table

Test:U:24.00V I:0.2350A P:5.640W PF:1.000 Freq:0Hz Lamp Flux:48.105x1 lm										
NAME: SF21-24V-3528-72-A					TYPE: 硅胶			WEIGHT:		
SPEC.:					DIM.: 28mm*11.5mm			SERIAL No.:2021113003		
MFR.: OLYMPIA					SUR.:1*0.016			Shielding Angle:		
ceiling/cavity	0.7	0.7	0.5	0.5	0.3	0.7	0.7	0.5	0.5	0.3
walls	0.5	0.3	0.5	0.3	0.3	0.5	0.3	0.5	0.3	0.3
working plane	0.2	0.2	0.2	0.2	0.2	0.2	0.2	0.2	0.2	0.2
Room dimensions	Viewed crosswise					Viewed endwise				
x = 2H y = 2H	21.5	22.7	22.1	23.3	24.1	19.0	20.3	19.6	20.9	21.6
3H	24.3	25.5	24.9	26.1	26.9	20.5	21.6	21.1	22.3	23.0
4H	25.9	27.0	26.5	27.7	28.4	21.0	22.1	21.7	22.8	23.6
6H	27.7	28.7	28.3	29.4	30.2	21.4	22.5	22.1	23.1	23.9
8H	28.7	29.7	29.3	30.4	31.2	21.5	22.5	22.2	23.2	24.0
12H	29.8	30.8	30.5	31.5	32.3	21.5	22.5	22.2	23.2	24.0
4H 2H	22.0	23.1	22.6	23.8	24.5	20.2	21.3	20.9	22.0	22.8
3H	25.1	26.0	25.8	26.7	27.6	22.0	22.9	22.7	23.6	24.5
4H	26.9	27.8	27.6	28.5	29.3	22.8	23.7	23.5	24.4	25.2
6H	28.9	29.7	29.6	30.4	31.3	23.4	24.2	24.1	24.9	25.8
8H	30.0	30.7	30.7	31.5	32.4	23.6	24.4	24.4	25.1	26.0
12H	31.3	31.9	32.0	32.7	33.6	23.7	24.4	24.5	25.2	26.1
8H 4H	27.2	27.9	27.9	28.7	29.6	24.0	24.7	24.8	25.5	26.4
6H	29.5	30.1	30.3	30.9	31.9	25.1	25.7	25.8	26.5	27.4
8H	30.8	31.4	31.6	32.2	33.2	25.5	26.1	26.3	26.9	27.9
12H	32.4	32.9	33.2	33.7	34.7	25.9	26.4	26.7	27.2	28.2
12H 4H	27.2	27.9	28.0	28.7	29.6	24.4	25.1	25.2	25.9	26.8
6H	29.6	30.2	30.4	31.0	31.9	25.8	26.3	26.6	27.1	28.1
8H	31.1	31.6	31.9	32.4	33.4	26.4	26.9	27.2	27.7	28.7
Variations with the observer position at spacings:										
S = 1.0H	+ 0.1 / - 0.1					+ 0.1 / - 0.1				
1.5H	+ 0.2 / - 0.3					+ 0.2 / - 0.3				
2.0H	+ 0.2 / - 0.3					+ 0.2 / - 0.4				

CIE Pub.117, 48.11 lm Total Lamp Luminous Flux Correct (8log(F/F0) = -10.5)

C Range: 0 - 360DEG
C Interval: 30.0DEG
Test Speed: HIGH
Temperature:25.3DEG
Operators:LPC
Test Date:2021-11-30

γ Range: 0 - 180DEG
γ Interval: 1.0DEG
Test System:EVERFINE GO-2000B_V1 SYSTEM V2.0.362
Humidity:65.0%
Test Distance:9.200m [K=1.0000]
Remarks:

UTILIZATION FACTORS TABLE

Test:U:24.00V I:0.2350A P:5.640W PF:1.000 Freq:0Hz Lamp Flux:48.105x1 lm		
NAME: SF21-24V-3528-72-A	TYPE: 硅胶	WEIGHT:
SPEC.:	DIM.: 28mm*11.5mm	SERIAL No.:2021113003
MFR.: OLYMPIA	SUR.:1*0.016	Shielding Angle:

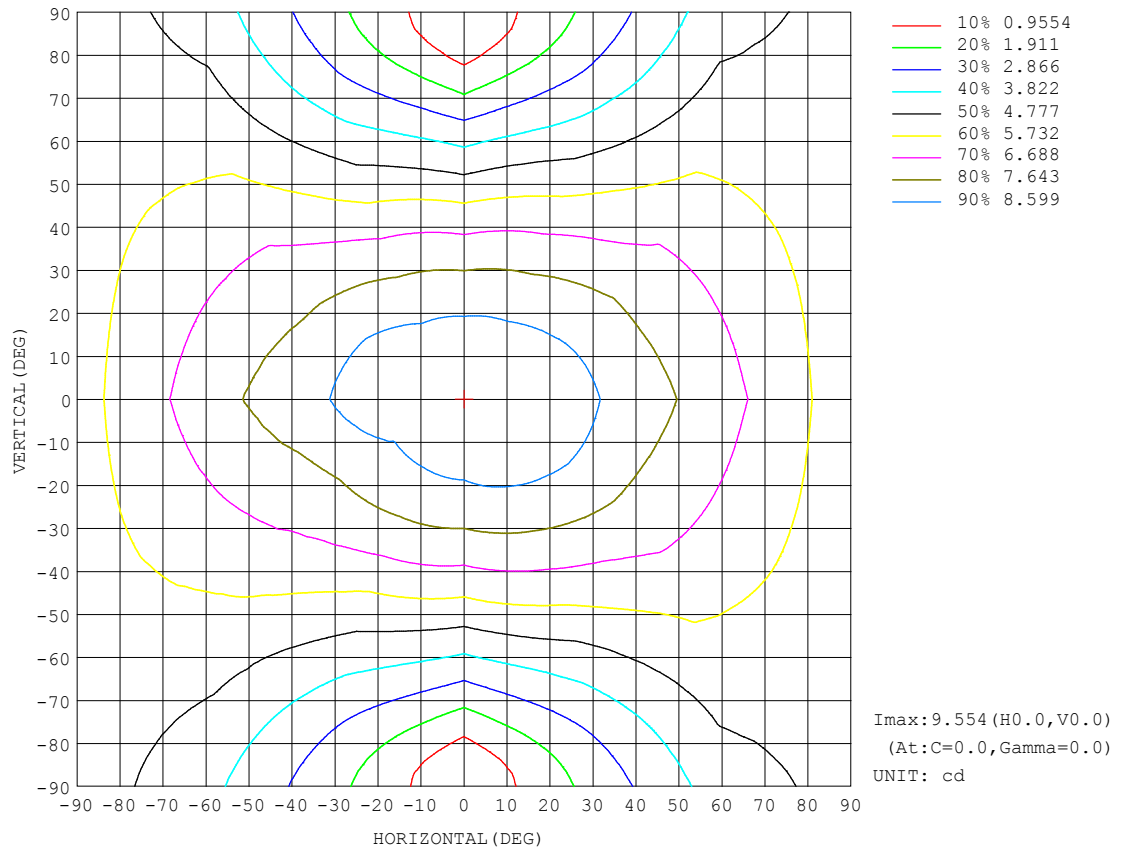
REFLECTANCE										
Ceiling	0.8	0.8	0.8	0.7	0.7	0.7	0.5	0.5	0.5	0
Walls	0.7	0.5	0.3	0.7	0.5	0.3	0.7	0.5	0.3	0
Working plane	0.2	0.2	0.2	0.2	0.2	0.2	0.2	0.2	0.2	0
ROOM INDEX	UTILIZATION FACTORS (PERCENT) $k(RI) \times RCR = 5$									
$k = 0.60$	46	33	26	44	33	26	42	31	25	18
0.80	55	42	34	53	41	33	49	39	32	24
1.00	62	49	41	60	48	40	56	48	38	29
1.25	69	56	48	66	55	46	61	51	44	34
1.50	74	62	53	71	60	52	65	56	49	37
2.00	81	70	62	78	68	60	71	63	56	43
2.50	86	76	67	82	73	65	75	67	61	46
3.00	90	80	73	86	77	70	78	71	65	50
4.00	95	86	80	90	83	77	81	76	71	54
5.00	98	90	84	93	86	81	84	79	74	57
ROOM INDEX	UF(total)									Direct
According to DIN EN 13032-2 2004			Suspended					SHRNOM = 1.25		

C Range: 0 - 360DEG
 C Interval: 30.0DEG
 Test Speed: HIGH
 Temperature:25.3DEG
 Operators:LPC
 Test Date:2021-11-30

γ Range: 0 - 180DEG
 γ Interval: 1.0DEG
 Test System:EVERFINE GO-2000B_V1 SYSTEM V2.0.362
 Humidity:65.0%
 Test Distance:9.200m [K=1.0000]
 Remarks:

ISOCANDELA DIAGRAM

Test:U:24.00V I:0.2350A P:5.640W PF:1.000 Freq:0Hz Lamp Flux:48.105x1 lm		
NAME: SF21-24V-3528-72-A	TYPE: 硅胶	WEIGHT:
SPEC.:	DIM.: 28mm*11.5mm	SERIAL No.:2021113003
MFR.: OLYMPIA	SUR.:1*0.016	Shielding Angle:

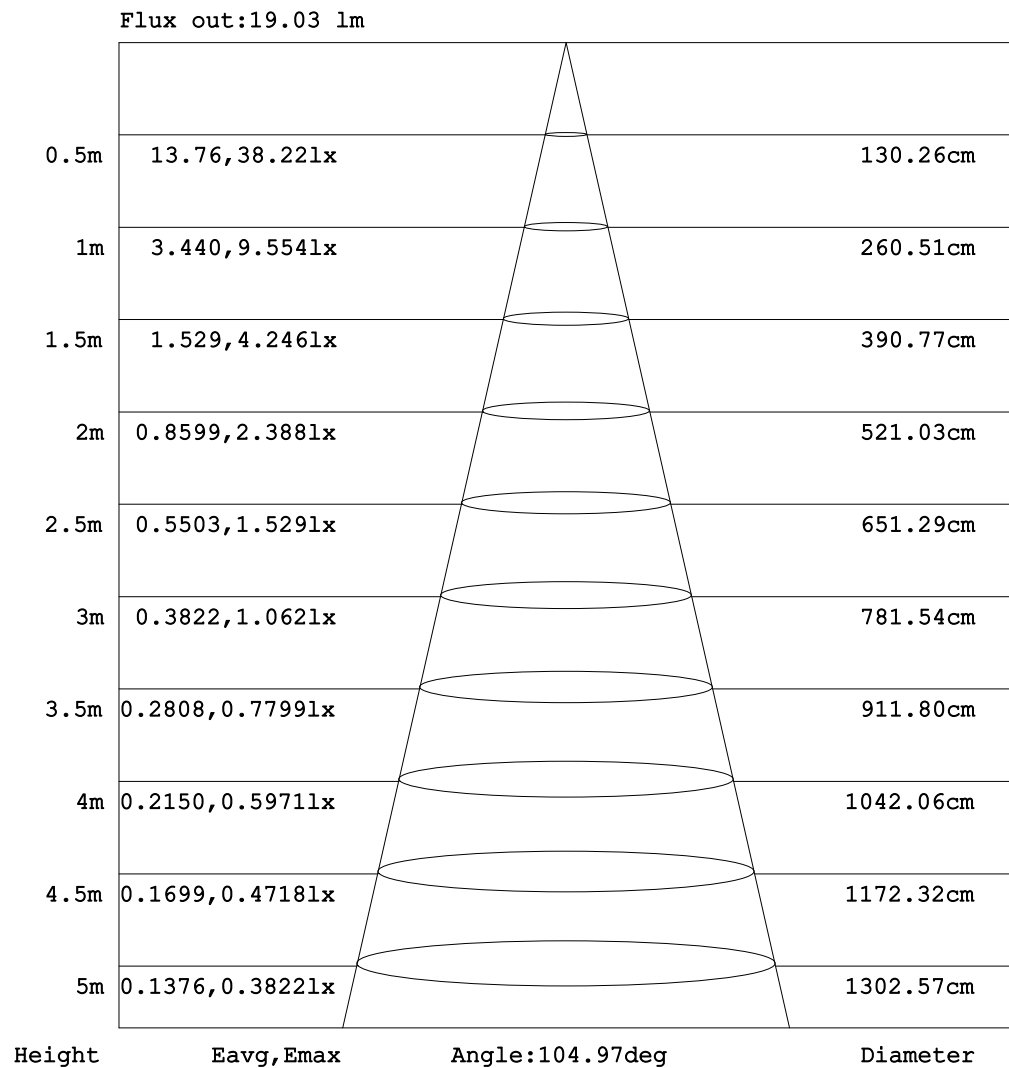


C Range: 0 - 360DEG
C Interval: 30.0DEG
Test Speed: HIGH
Temperature: 25.3DEG
Operators: LPC
Test Date: 2021-11-30

γ Range: 0 - 180DEG
 γ Interval: 1.0DEG
Test System: EVERFINE GO-2000B_V1 SYSTEM V2.0.362
Humidity: 65.0%
Test Distance: 9.200m [K=1.0000]
Remarks:

AAI Figure

Test:U:24.00V I:0.2350A P:5.640W PF:1.000 Freq:0Hz Lamp Flux:48.105x1 lm		
NAME: SF21-24V-3528-72-A	TYPE: 硅胶	WEIGHT:
SPEC.:	DIM.: 28mm*11.5mm	SERIAL No.:2021113003
MFR.: OLYMPIA	SUR.:1*0.016	Shielding Angle:



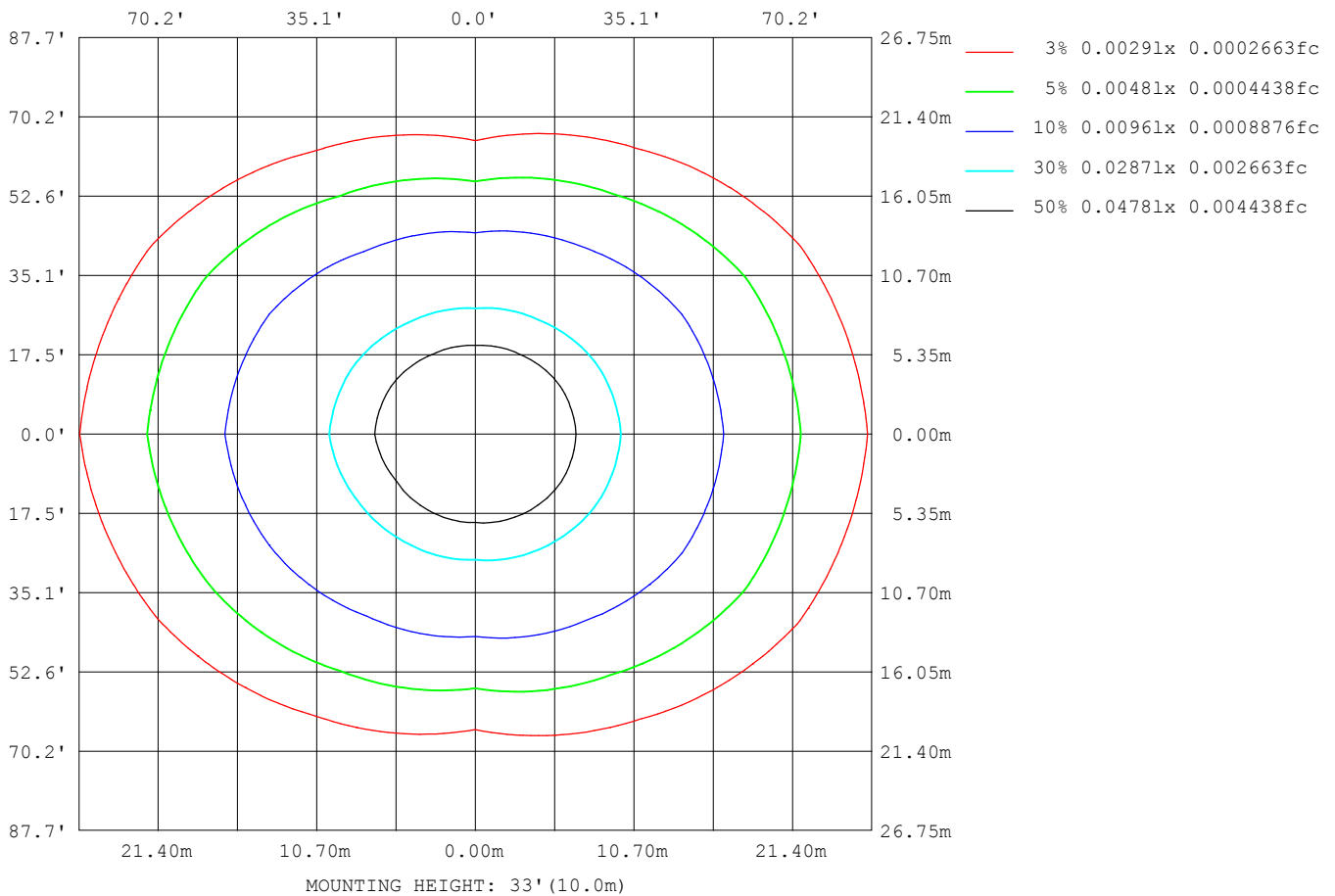
Note: The Curves indicate the illuminated area and the average illumination when the luminaire is at different distance.

C Range: 0 - 360DEG
 C Interval: 30.0DEG
 Test Speed: HIGH
 Temperature: 25.3DEG
 Operators: LPC
 Test Date: 2021-11-30

γ Range: 0 - 180DEG
 γ Interval: 1.0DEG
 Test System: EVERFINE GO-2000B_V1 SYSTEM V2.0.362
 Humidity: 65.0%
 Test Distance: 9.200m [K=1.0000]
 Remarks:

ISOLUX DIAGRAM

Test:U:24.00V I:0.2350A P:5.640W PF:1.000 Freq:0Hz Lamp Flux:48.105x1 lm		
NAME: SF21-24V-3528-72-A	TYPE: 硅胶	WEIGHT:
SPEC.:	DIM.: 28mm*11.5mm	SERIAL No.:2021113003
MFR.: OLYMPIA	SUR.:1*0.016	Shielding Angle:



C Range: 0 - 360DEG
C Interval: 30.0DEG
Test Speed: HIGH
Temperature:25.3DEG
Operators:LPC
Test Date:2021-11-30

γ Range: 0 - 180DEG
 γ Interval: 1.0DEG
Test System:EVERFINE GO-2000B_V1 SYSTEM V2.0.362
Humidity:65.0%
Test Distance:9.200m [K=1.0000]
Remarks:

LED Avg.L Report

Test:U:24.00V I:0.2350A P:5.640W PF:1.000 Freq:0Hz Lamp Flux:48.105x1 lm		
NAME: SF21-24V-3528-72-A	TYPE:硅胶	WEIGHT:
SPEC.:	DIM.: 28mm*11.5mm	SERIAL No.:2021113003
MFR.: OLYMPIA	SUR.:1*0.016	Shielding Angle:

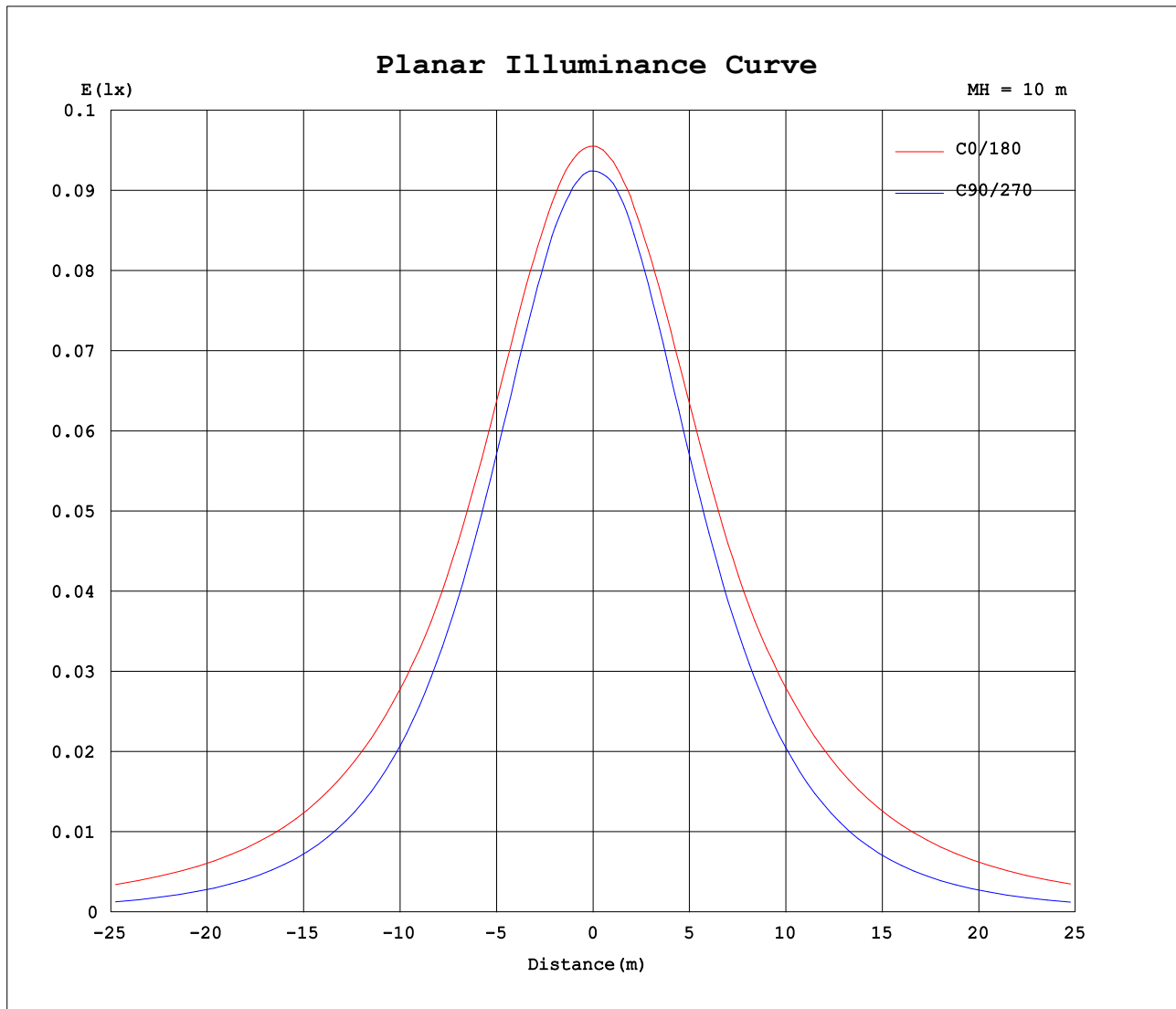
AvgL	cd/m2
L_0~180 (65) av	1007
L_0~180 (75) av	1502
L_0~180 (85) av	3984
L_90~270 (65) av	426
L_90~270 (75) av	332
L_90~270 (85) av	157
L_45 (65) av	747
L_45 (75) av	1030
L_45 (85) av	2579

Standard: GB/T 29293-2012

C Range: 0 - 360DEG
C Interval: 30.0DEG
Test Speed: HIGH
Temperature:25.3DEG
Operators:LPC
Test Date:2021-11-30

γ Range: 0 - 180DEG
γ Interval: 1.0DEG
Test System:EVERFINE GO-2000B_V1 SYSTEM V2.0.362
Humidity:65.0%
Test Distance:9.200m [K=1.0000]
Remarks:

Planar Illuminance Curve



C Range: 0 - 360DEG
C Interval: 30.0DEG
Test Speed: HIGH
Temperature: 25.3DEG
Operators: LPC
Test Date: 2021-11-30

γ Range: 0 - 180DEG
 γ Interval: 1.0DEG
Test System: EVERFINE GO-2000B_V1 SYSTEM V2.0.362
Humidity: 65.0%
Test Distance: 9.200m [K=1.0000]
Remarks:

LUMINOUS DISTRIBUTION INTENSITY DATA

Test:U:24.00V I:0.2350A P:5.640W PF:1.000 Freq:0Hz Lamp Flux:48.105x1 lm		
NAME: SF21-24V-3528-72-A	TYPE: 硅胶	WEIGHT:
SPEC.:	DIM.: 28mm*11.5mm	SERIAL No.:2021113003
MFR.: OLYMPIA	SUR.:1*0.016	Shielding Angle:

Table--1

UNIT: cd

C (DEG) γ (DEG)	0	30	60	90	120	150	180	210	240	270	300	330						
0	9.55	9.46	9.35	9.24	9.21	9.16	9.55	9.46	9.35	9.24	9.21	9.16						
5	9.54	9.43	9.36	9.20	9.18	9.08	9.52	9.44	9.28	9.24	9.21	9.18						
10	9.49	9.34	9.27	9.07	9.02	8.95	9.45	9.32	9.15	9.13	9.12	9.16						
15	9.37	9.20	9.08	8.83	8.80	8.76	9.31	9.16	8.91	8.88	8.92	9.06						
20	9.22	9.04	8.80	8.52	8.49	8.57	9.16	8.96	8.60	8.54	8.64	8.88						
25	8.99	8.80	8.45	8.13	8.14	8.27	8.95	8.69	8.24	8.11	8.30	8.65						
30	8.70	8.49	8.04	7.65	7.72	7.95	8.68	8.37	7.82	7.63	7.89	8.38						
35	8.39	8.14	7.58	7.11	7.25	7.56	8.36	7.99	7.35	7.06	7.43	8.06						
40	8.07	7.75	7.07	6.52	6.73	7.23	8.08	7.60	6.83	6.47	6.93	7.71						
45	7.87	7.35	6.53	5.86	6.17	6.96	7.91	7.30	6.28	5.81	6.41	7.34						
50	7.62	7.03	5.95	5.18	5.59	6.67	7.70	7.02	5.69	5.10	5.85	6.99						
55	7.34	6.70	5.36	4.44	5.06	6.35	7.45	6.70	5.12	4.36	5.30	6.71						
60	7.04	6.37	4.76	3.70	4.54	6.04	7.18	6.35	4.60	3.61	4.73	6.39						
65	6.74	5.99	4.21	2.93	4.04	5.68	6.89	6.01	4.08	2.83	4.19	6.04						
70	6.44	5.64	3.72	2.16	3.54	5.35	6.61	5.66	3.58	2.04	3.71	5.68						
75	6.13	5.30	3.24	1.44	3.08	5.04	6.31	5.34	3.10	1.31	3.24	5.36						
80	5.80	4.96	2.82	0.76	2.70	4.71	5.98	5.01	2.70	0.66	2.81	5.04						
85	5.45	4.64	2.48	0.24	2.39	4.40	5.66	4.67	2.38	0.20	2.47	4.71						
90	5.12	4.31	2.22	0.14	2.17	4.12	5.31	4.37	2.14	0.07	2.21	4.41						
95	4.80	4.05	2.06	0.12	2.00	3.84	4.99	4.10	1.95	0.07	2.03	4.14						
100	4.50	3.78	1.96	0.13	1.88	3.48	4.66	3.69	1.85	0.07	1.92	3.87						
105	4.13	3.33	1.90	0.13	1.78	3.17	4.25	3.39	1.80	0.07	1.84	3.42						
110	3.87	3.19	1.76	0.13	1.48	3.03	3.97	3.24	1.61	0.07	1.75	3.28						
115	3.64	3.04	1.71	0.14	1.37	2.87	3.72	3.09	1.50	0.07	1.70	3.11						
120	3.43	2.92	1.67	0.15	1.39	2.57	3.50	2.87	1.43	0.07	1.56	2.97						
125	3.24	2.77	1.52	0.15	1.41	2.41	3.14	2.66	1.44	0.07	1.50	2.78						
130	3.04	2.63	1.43	0.16	1.42	2.28	2.94	2.48	1.45	0.08	1.41	2.66						
135	2.83	2.34	1.32	0.16	1.32	2.16	2.62	2.28	1.40	0.08	1.30	2.32						
140	2.63	1.99	1.14	0.17	1.25	2.03	2.46	2.21	1.32	0.11	1.18	1.95						
145	2.43	1.64	0.99	0.17	1.16	1.88	1.67	2.03	1.21	0.14	1.01	1.66						
150	2.22	1.44	0.87	0.18	1.07	1.63	1.72	1.83	1.10	0.14	0.87	1.45						
155	1.98	1.18	0.82	0.18	0.97	1.43	1.67	1.61	1.01	0.14	0.86	1.25						
160	1.67	0.94	0.81	0.18	0.83	1.21	1.57	1.41	0.87	0.14	0.85	1.00						
165	1.34	0.74	0.80	0.18	0.71	1.01	1.33	1.22	0.76	0.14	0.84	0.80						
170	0.65	0.65	0.74	0.18	0.58	0.78	0.52	0.95	0.65	0.14	0.76	0.77						
175	0.50	0.53	0.66	0.18	0.34	0.53	0.45	0.73	0.44	0.14	0.69	0.70						
180	0.21	0.19	0.18	0.18	0.19	0.19	0.21	0.20	0.20	0.14	0.17	0.19						

C Range: 0 - 360DEG
C Interval: 30.0DEG
Test Speed: HIGH
Temperature:25.3DEG
Operators:LPC
Test Date:2021-11-30

γ Range: 0 - 180DEG
γ Interval: 1.0DEG
Test System:EVERFINE GO-2000B_V1 SYSTEM V2.0.362
Humidity:65.0%
Test Distance:9.200m [K=1.0000]
Remarks:

Photometric Data Table [cd]

G/C	0.0	30.0	60.0	90.0	120.0	150.0	180.0	210.0	240.0	270.0
0.0	9.554	9.458	9.348	9.242	9.212	9.162	9.554	9.458	9.348	9.242
3.0	9.554	9.443	9.363	9.232	9.217	9.117	9.544	9.458	9.313	9.242
6.0	9.539	9.403	9.343	9.187	9.142	9.056	9.514	9.423	9.247	9.237
9.0	9.509	9.363	9.298	9.101	9.052	8.976	9.458	9.348	9.177	9.167
12.0	9.449	9.287	9.218	9.006	8.951	8.880	9.388	9.268	9.071	9.032
15.0	9.368	9.202	9.082	8.835	8.801	8.765	9.312	9.162	8.910	8.881
18.0	9.293	9.116	8.921	8.654	8.625	8.634	9.232	9.052	8.729	8.680
21.0	9.177	8.991	8.735	8.453	8.424	8.498	9.126	8.911	8.538	8.454
24.0	9.032	8.865	8.529	8.201	8.213	8.337	8.996	8.750	8.317	8.213
27.0	8.876	8.679	8.298	7.935	7.982	8.146	8.845	8.575	8.075	7.922
30.0	8.700	8.493	8.042	7.648	7.721	7.950	8.679	8.368	7.824	7.625
33.0	8.519	8.287	7.766	7.332	7.439	7.719	8.493	8.142	7.543	7.303
36.0	8.323	8.066	7.479	6.985	7.143	7.483	8.312	7.906	7.246	6.951
39.0	8.127	7.834	7.178	6.643	6.831	7.287	8.126	7.670	6.939	6.595
42.0	7.976	7.588	6.856	6.261	6.515	7.126	8.016	7.464	6.623	6.208
45.0	7.871	7.347	6.535	5.864	6.173	6.960	7.910	7.303	6.281	5.806
48.0	7.725	7.131	6.183	5.462	5.826	6.784	7.784	7.137	5.934	5.374
51.0	7.574	6.960	5.836	5.034	5.484	6.623	7.668	6.951	5.577	4.962
54.0	7.404	6.764	5.479	4.602	5.158	6.417	7.513	6.760	5.226	4.504
57.0	7.223	6.573	5.128	4.155	4.861	6.221	7.352	6.564	4.919	4.062
60.0	7.037	6.367	4.761	3.702	4.544	6.035	7.181	6.353	4.602	3.615
63.0	6.856	6.136	4.414	3.235	4.238	5.824	7.015	6.152	4.291	3.142
66.0	6.690	5.915	4.122	2.778	3.941	5.618	6.829	5.941	3.984	2.665
69.0	6.504	5.704	3.816	2.321	3.640	5.417	6.659	5.730	3.678	2.203
72.0	6.323	5.503	3.524	1.863	3.358	5.226	6.488	5.534	3.391	1.750
75.0	6.127	5.302	3.238	1.436	3.082	5.035	6.312	5.338	3.105	1.313
78.0	5.926	5.096	2.971	1.009	2.845	4.839	6.131	5.137	2.849	0.9108
81.0	5.730	4.894	2.740	0.6473	2.634	4.648	5.920	4.941	2.628	0.5636
84.0	5.519	4.704	2.539	0.3159	2.448	4.457	5.714	4.745	2.442	0.2672
87.0	5.323	4.503	2.368	0.1735	2.287	4.281	5.513	4.549	2.271	0.0907
90.0	5.122	4.312	2.222	0.1365	2.166	4.116	5.312	4.373	2.136	0.0704
93.0	4.931	4.146	2.116	0.1275	2.061	3.965	5.115	4.202	2.040	0.0704
96.0	4.740	3.985	2.031	0.1224	1.970	3.804	4.939	4.046	1.930	0.0704
99.0	4.559	3.829	1.970	0.1248	1.900	3.652	4.724	3.880	1.889	0.0704
102.0	4.289	3.422	1.935	0.1219	1.845	3.241	4.447	3.488	1.829	0.0704
105.0	4.127	3.327	1.905	0.1257	1.784	3.166	4.246	3.393	1.799	0.0704
108.0	3.971	3.252	1.774	0.1294	1.529	3.100	4.075	3.297	1.680	0.0704
111.0	3.825	3.166	1.746	0.1332	1.456	3.000	3.914	3.212	1.578	0.0704
114.0	3.679	3.070	1.718	0.1370	1.390	2.910	3.759	3.111	1.513	0.0704
117.0	3.554	2.985	1.690	0.1407	1.323	2.793	3.638	3.021	1.428	0.0704
120.0	3.428	2.920	1.669	0.1450	1.395	2.573	3.502	2.870	1.432	0.0704
123.0	3.312	2.834	1.614	0.1492	1.402	2.463	3.226	2.739	1.437	0.0704
126.0	3.197	2.754	1.513	0.1532	1.410	2.387	3.100	2.624	1.441	0.0704
129.0	3.076	2.678	1.453	0.1564	1.417	2.317	2.980	2.513	1.446	0.0754
132.0	2.956	2.563	1.387	0.1597	1.387	2.117	2.864	2.251	1.437	0.0754
135.0	2.830	2.336	1.322	0.1628	1.322	2.156	2.622	2.276	1.402	0.0805
138.0	2.714	2.125	1.217	0.1659	1.262	2.075	2.598	2.262	1.352	0.1004
141.0	2.594	1.929	1.106	0.1689	1.237	1.980	2.396	2.181	1.301	0.1205
144.0	2.463	1.693	1.021	0.1731	1.181	1.890	2.056	2.061	1.241	0.1357
147.0	2.347	1.573	0.9401	0.1751	1.131	1.779	1.863	1.960	1.166	0.1357
150.0	2.222	1.437	0.8747	0.1770	1.066	1.633	1.719	1.830	1.101	0.1357
153.0	2.096	1.276	0.8244	0.1790	1.026	1.507	1.691	1.704	1.075	0.1357
156.0	1.915	1.125	0.8181	0.1797	0.9500	1.392	1.663	1.563	0.9997	0.1357
159.0	1.724	0.9896	0.8118	0.1799	0.8597	1.256	1.598	1.412	0.9043	0.1357
162.0	1.564	0.8590	0.8055	0.1801	0.7943	1.125	1.482	1.322	0.8289	0.1374
165.0	1.338	0.7386	0.7992	0.1802	0.7138	1.015	1.327	1.222	0.7638	0.1390
168.0	0.8185	0.6785	0.7790	0.1804	0.6587	0.8641	1.156	1.036	0.6834	0.1398
171.0	0.6285	0.6330	0.7338	0.1806	0.5333	0.7334	0.4824	0.9000	0.6179	0.1401
174.0	0.5332	0.5526	0.6787	0.1808	0.3776	0.6074	0.4573	0.7793	0.4820	0.1404
177.0	0.4576	0.5113	0.5139	0.1809	0.2818	0.3462	0.4520	0.6437	0.3211	0.1407
180.0	0.2061	0.1910	0.1809	0.1809	0.1910	0.1860	0.2111	0.2010	0.1960	0.1407
G/C	300.0	330.0								
0.0	9.212	9.162								
3.0	9.212	9.187								
6.0	9.177	9.176								
9.0	9.122	9.165								
12.0	9.036	9.132								
15.0	8.915	9.062								
18.0	8.764	8.961								
21.0	8.578	8.836								
24.0	8.377	8.705								
27.0	8.146	8.554								
30.0	7.890	8.384								

C Range: 0 - 360DEG
 C Interval: 30.0DEG
 Test Speed: HIGH
 Temperature: 25.3DEG
 Operators: LPC
 Test Date: 2021-11-30

γ Range: 0 - 180DEG
 γ Interval: 1.0DEG
 Test System: EVERFINE GO-2000B_V1 SYSTEM V2.0.362
 Humidity: 65.0%
 Test Distance: 9.200m [K=1.0000]
 Remarks:

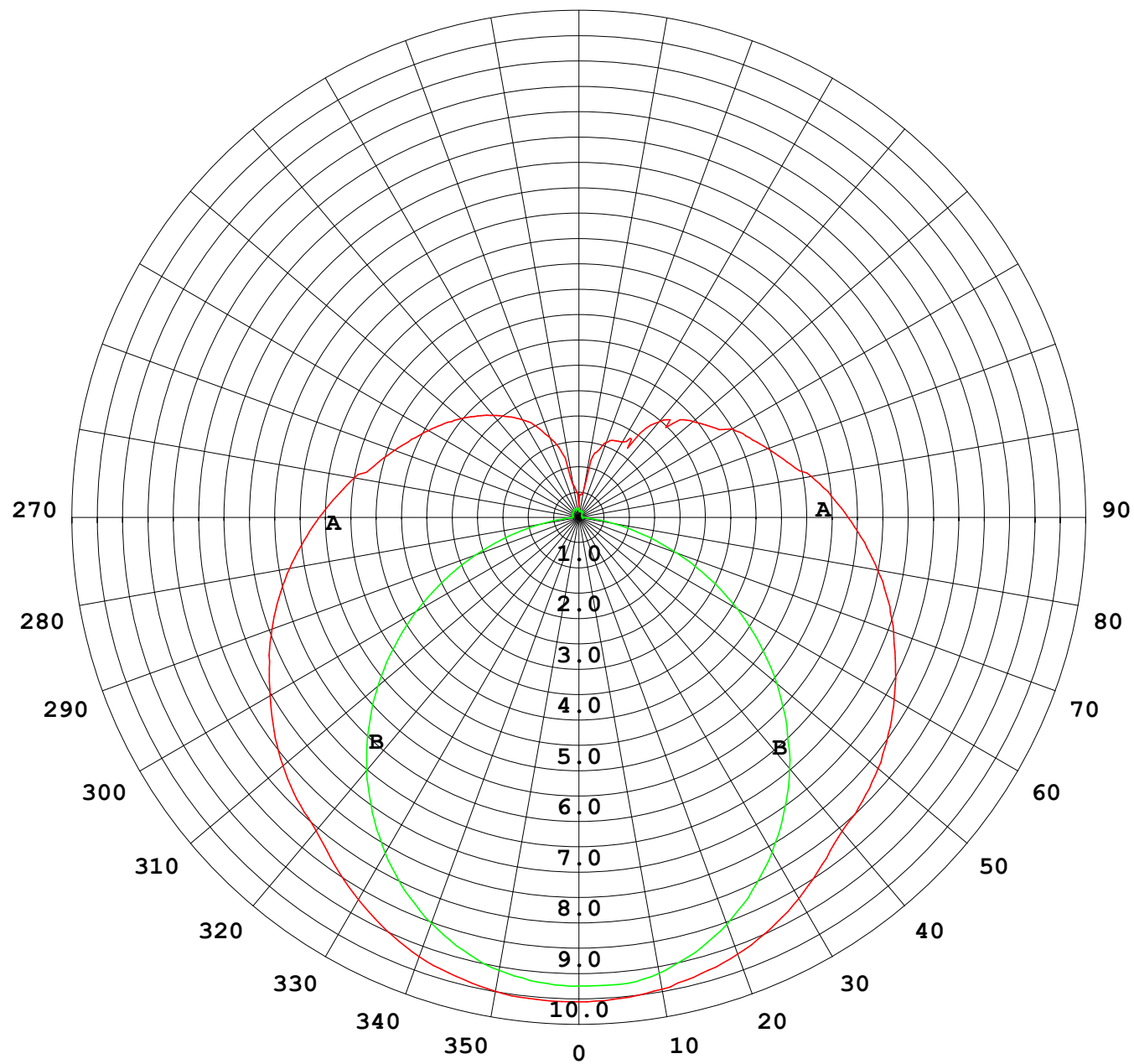
Photometric Data Table [cd]

33.0	7.613	8.197
36.0	7.331	7.996
39.0	7.030	7.786
42.0	6.718	7.574
45.0	6.407	7.338
48.0	6.080	7.112
51.0	5.753	6.931
54.0	5.417	6.760
57.0	5.090	6.584
60.0	4.728	6.388
63.0	4.406	6.177
66.0	4.095	5.956
69.0	3.808	5.745
72.0	3.517	5.559
75.0	3.236	5.358
78.0	2.959	5.167
81.0	2.733	4.971
84.0	2.532	4.785
87.0	2.357	4.599
90.0	2.206	4.408
93.0	2.095	4.232
96.0	2.005	4.081
99.0	1.940	3.920
102.0	1.895	3.504
105.0	1.839	3.423
108.0	1.766	3.327
111.0	1.739	3.237
114.0	1.729	3.146
117.0	1.644	3.061
120.0	1.563	2.970
123.0	1.513	2.865
126.0	1.492	2.759
129.0	1.427	2.684
132.0	1.372	2.574
135.0	1.296	2.323
138.0	1.246	2.076
141.0	1.150	1.855
144.0	1.050	1.709
147.0	0.9546	1.588
150.0	0.8743	1.453
153.0	0.8677	1.347
156.0	0.8610	1.202
159.0	0.8544	1.051
162.0	0.8477	0.8950
165.0	0.8411	0.7991
168.0	0.7789	0.7816
171.0	0.7637	0.7640
174.0	0.7134	0.7139
177.0	0.5357	0.6636
180.0	0.1658	0.1860

C Range: 0 - 360DEG
 C Interval: 30.0DEG
 Test Speed: HIGH
 Temperature: 25.3DEG
 Operators: LPC
 Test Date: 2021-11-30

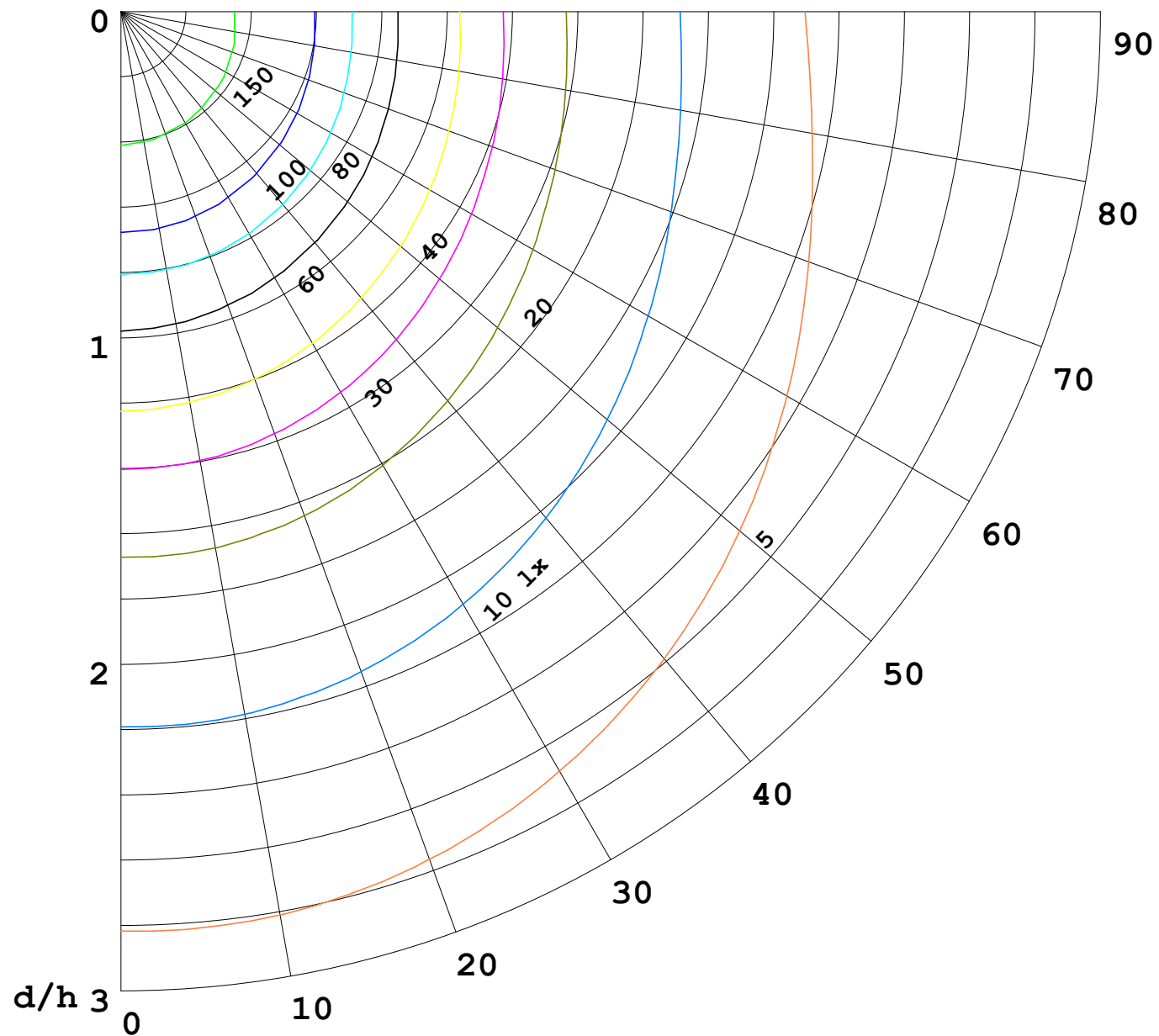
γ Range: 0 - 180DEG
 γ Interval: 1.0DEG
 Test System: EVERFINE GO-2000B_V1 SYSTEM V2.0.362
 Humidity: 65.0%
 Test Distance: 9.200m [K=1.0000]
 Remarks:

I (cd)



1000 lm

$\kappa = 1$



F = 5000 lm
 K = 0.7
 Hcc = 0.0 m
 Hfc = 0.0 m
 Eave = 100 lx

	Pcc	Pw	Pfc
—	70	50	30
—	50	30	20

