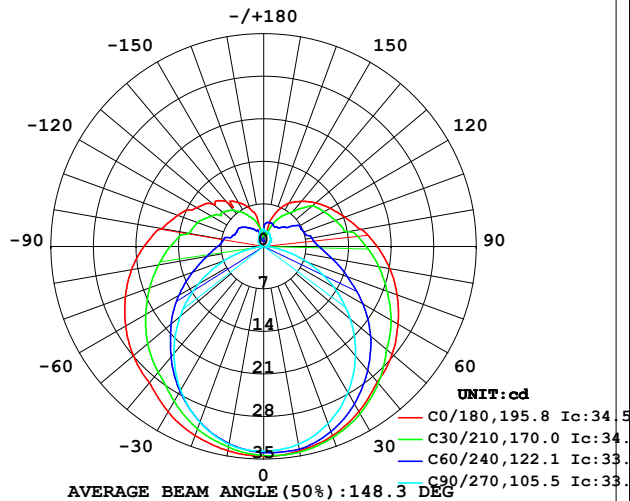


LUMINAIRE PHOTOMETRIC TEST REPORT

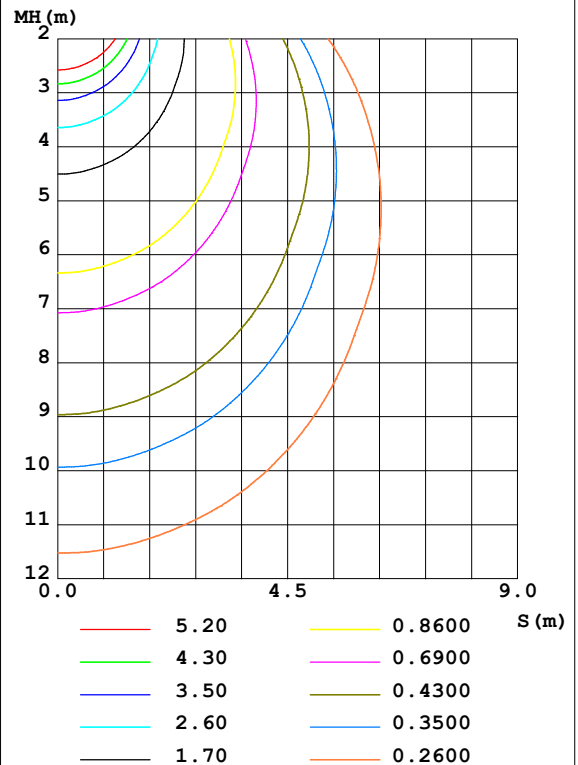
Test:U:24.00V I:0.2256A P:5.414W PF:1.000 Freq:0Hz Lamp Flux:178.317x1 lm		
NAME: SF21-24V-3528-72-4500-80	TYPE: 硅胶	WEIGHT:
SPEC.:	DIM.: 28mm*11.5mm	SERIAL No.:2021113001
MFR.: OLYMPIA	SUR.:1*0.016	Shielding Angle:

DATA OF LAMP		PHOTOMETRIC DATA Eff: 32.93 lm/W			
MODEL	3528	I _{max} (cd)	34.53	S/MH (C0/180)	1.36
NOMINAL POWER (W)	5	LOR (%)	100.0	S/MH (C90/270)	1.21
RATED VOLTAGE (V)	24	TOTAL FLUX (lm)	178.32	η UP, DN (C0-180)	13.0, 36.3
NOMINAL FLUX (lm)	178.317	CIE CLASS	SEMI-D.	η UP, DN (C180-360)	13.7, 37.0
LAMPS INSIDE	1	η up (%)	26.7	CIBSE SHR NOM	1.50
TEST VOLTAGE (V)	24.0	η down (%)	73.3	CIBSE SHR MAX	1.50

LUMINOUS INTENSITY DISTRIBUTION DIAGRAM



C0 PLANE ISOLUX DIAGRAM (UNIT: lx)



C Range: 0 - 360DEG
 C Interval: 30.0DEG
 Test Speed: HIGH
 Temperature: 25.3DEG
 Operators: LPC
 Test Date: 2021-11-30

γ Range: 0 - 180DEG
 γ Interval: 1.0DEG
 Test System: EVERFINE GO-2000B_V1 SYSTEM V2.0.362
 Humidity: 65.0%
 Test Distance: 9.200m [K=1.0000]
 Remarks:

ZONAL FLUX DIAGRAM

ZONAL FLUX DIAGRAM:

γ	C0	C45	C90	C135	C180	C225	C270	C315	γ	Φ zone	Φ total	%lum, lamp
10	34.13	34.09	33.06	32.57	34.12	33.24	33.03	33.81	0- 10	3.220	3.220	1.81,1.81
20	33.14	32.92	31.02	30.46	33.10	31.33	30.77	32.78	10- 20	9.269	12.49	7,7
30	31.36	30.84	27.74	27.60	31.43	28.50	27.35	30.84	20- 30	14.19	26.68	15,15
40	29.13	27.98	23.51	24.75	29.29	25.38	22.99	28.39	30- 40	17.55	44.23	24.8,24.8
50	27.59	24.69	18.60	21.75	28.00	22.39	17.97	25.38	40- 50	19.30	63.53	35.6,35.6
60	25.51	21.53	13.25	18.58	26.25	19.28	12.46	22.06	50- 60	19.46	82.99	46.5,46.5
70	23.38	18.15	7.674	15.53	24.22	16.20	6.960	18.81	60- 70	18.17	101.2	56.7,56.7
80	21.08	15.30	2.630	12.93	22.09	13.55	2.114	15.96	70- 80	15.95	117.1	65.7,65.7
90	18.67	13.00	0.5205	10.95	19.69	11.50	0.4000	13.67	80- 90	13.56	130.7	73.3,73.3
100	16.35	11.00	0.5580	9.195	17.04	9.591	0.4467	11.52	90-100	11.69	142.4	79.8,79.8
110	14.19	9.823	0.7541	8.063	15.05	8.481	0.5777	10.37	100-110	9.695	152.1	85.3,85.3
120	12.62	9.147	1.096	7.048	12.78	7.557	0.8440	9.313	110-120	8.151	160.2	89.8,89.8
130	11.18	7.648	1.483	6.323	10.80	6.835	1.105	8.358	120-130	6.617	166.8	93.6,93.6
140	9.702	5.739	1.789	5.342	9.722	5.926	1.322	6.532	130-140	4.974	171.8	96.3,96.3
150	8.214	4.706	2.106	4.056	8.346	4.807	1.548	5.312	140-150	3.337	175.1	98.2,98.2
160	5.958	3.805	2.367	3.013	6.595	3.815	2.100	4.471	150-160	2.037	177.2	99.4,99.4
170	2.177	3.055	2.578	1.519	2.190	1.920	2.643	4.031	160-170	0.9195	178.1	99.9,99.9
180	0.8594	1.500	2.623	2.463	0.8544	1.191	2.970	2.463	170-180	0.2268	178.3	100,100
DEG	LUMINOUS INTENSITY:cd									UNIT:lm		

Conical surface Flux(90deg): 53.761 lm

%lum = 30.1%

%lamp = 30.1%

Conical surface Flux(120deg): 82.987 lm

%lum = 46.5%

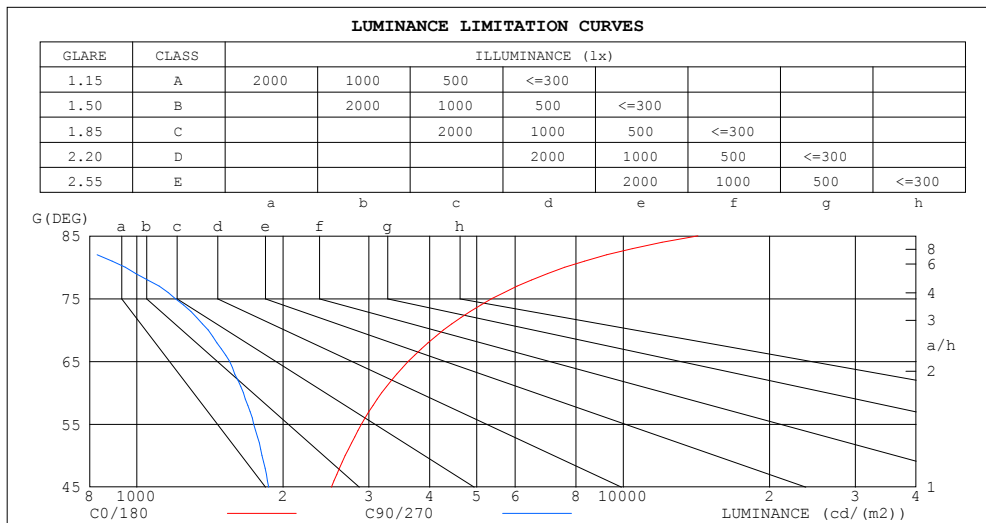
%lamp = 46.5%

C Range: 0 - 360DEG
 C Interval: 30.0DEG
 Test Speed: HIGH
 Temperature:25.3DEG
 Operators:LPC
 Test Date:2021-11-30

γ Range: 0 - 180DEG
 γ Interval: 1.0DEG
 Test System:EVERFINE GO-2000B_V1 SYSTEM V2.0.362
 Humidity:65.0%
 Test Distance:9.200m [K=1.0000]
 Remarks:

LUMINANCE LIMITATION CURVES

Test:U:24.00V I:0.2256A P:5.414W PF:1.000 Freq:0Hz Lamp Flux:178.317x1 lm		
NAME: SF21-24V-3528-72-4500-80	TYPE: 硅胶	WEIGHT:
SPEC.:	DIM.: 28mm*11.5mm	SERIAL No.:2021113001
MFR.: OLYMPIA	SUR.:1*0.016	Shielding Angle:



LUMINANCE cd/(m2)		
G (DEG)	C0/180	C90/270
85	14234	643
80	7586	947
75	5372	1201
70	4272	1402
65	3618	1552
60	3189	1657
55	2898	1740
50	2683	1809
45	2514	1868

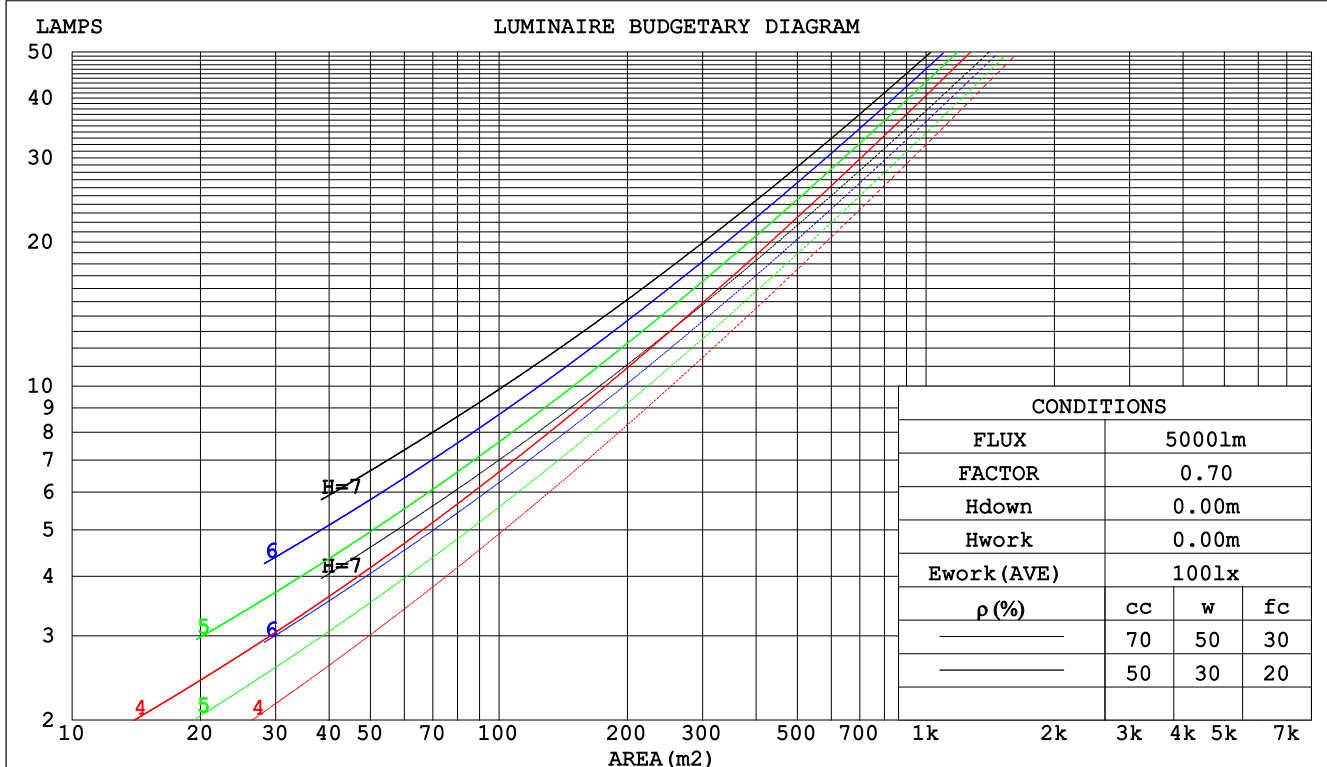
C Range: 0 - 360DEG
C Interval: 30.0DEG
Test Speed: HIGH
Temperature:25.3DEG
Operators:LPC
Test Date:2021-11-30

γ Range: 0 - 180DEG
 γ Interval: 1.0DEG
Test System:EVERFINE GO-2000B_V1 SYSTEM V2.0.362
Humidity:65.0%
Test Distance:9.200m [K=1.0000]
Remarks:

CU AND LUMINAIRE BUDGETARY ESTIMATE DIAGRAM

Test:U:24.00V I:0.2256A P:5.414W PF:1.000 Freq:0Hz Lamp Flux:178.317x1 lm		
NAME: SF21-24V-3528-72-4500-80	TYPE: 硅胶	WEIGHT:
SPEC.:	DIM.: 28mm*11.5mm	SERIAL No.:2021113001
MFR.: OLYMPIA	SUR.:1*0.016	Shielding Angle:

pcc	80%			70%			50%			30%			10%			0
pw	50%	30%	10%	50%	30%	10%	50%	30%	10%	50%	30%	10%	50%	30%	10%	0
pfc	20%			20%			20%			20%			20%			0
RCR	RCR:Room Cavity Ratio						Coefficients of Utilization(CU)									
0.0	1.13	1.13	1.13	1.07	1.07	1.07	.96	.96	.96	.86	.86	.86	.77	.77	.77	.73
1.0	.94	.88	.83	.89	.84	.80	.79	.76	.72	.71	.68	.65	.63	.61	.59	.55
2.0	.80	.72	.66	.76	.69	.63	.68	.62	.57	.61	.56	.52	.54	.50	.47	.43
3.0	.69	.60	.53	.66	.58	.51	.59	.52	.47	.53	.47	.43	.47	.42	.39	.35
4.0	.61	.52	.44	.58	.49	.43	.52	.45	.39	.46	.41	.36	.41	.36	.33	.29
5.0	.54	.45	.38	.51	.43	.36	.46	.39	.33	.41	.35	.31	.37	.32	.28	.25
6.0	.48	.39	.33	.46	.37	.31	.41	.34	.29	.37	.31	.27	.33	.28	.24	.22
7.0	.44	.35	.28	.41	.33	.27	.37	.30	.25	.34	.28	.23	.30	.25	.21	.19
8.0	.40	.31	.25	.38	.30	.24	.34	.27	.22	.31	.25	.21	.28	.23	.19	.17
9.0	.36	.28	.22	.34	.27	.22	.31	.25	.20	.28	.23	.19	.26	.21	.17	.15
10.0	.33	.25	.20	.32	.24	.19	.29	.22	.18	.26	.21	.17	.24	.19	.15	.14



C Range: 0 - 360DEG
 C Interval: 30.0DEG
 Test Speed: HIGH
 Temperature:25.3DEG
 Operators:LPC
 Test Date:2021-11-30

γ Range: 0 - 180DEG
 γ Interval: 1.0DEG
 Test System:EVERFINE GO-2000B_V1 SYSTEM V2.0.362
 Humidity:65.0%
 Test Distance:9.200m [K=1.0000]
 Remarks:

WEC AND CCEC

Test:U:24.00V I:0.2256A P:5.414W PF:1.000 Freq:0Hz Lamp Flux:178.317x1 lm		
NAME: SF21-24V-3528-72-4500-80	TYPE: 硅胶	WEIGHT:
SPEC.:	DIM.: 28mm*11.5mm	SERIAL No.:2021113001
MFR.: OLYMPIA	SUR.:1*0.016	Shielding Angle:

pcc	80%			70%			50%			30%			10%			0	
pw	50%	30%	10%	50%	30%	10%	50%	30%	10%	50%	30%	10%	50%	30%	10%	0	
pfc	20%			20%			20%			20%			20%			0	
RCR	RCR:Room Cavity Ratio						Wall Exitance Coefficients(WEC)										
0.0																	
1.0	.383	.218	.069	.368	.210	.067	.339	.195	.062	.313	.180	.058	.289	.167	.054		
2.0	.330	.181	.055	.316	.174	.054	.290	.161	.050	.266	.149	.047	.244	.138	.043		
3.0	.292	.156	.047	.280	.150	.045	.256	.139	.042	.234	.128	.039	.214	.118	.037		
4.0	.263	.137	.040	.251	.132	.039	.230	.122	.036	.210	.113	.034	.191	.104	.032		
5.0	.239	.122	.035	.228	.117	.034	.209	.109	.032	.190	.100	.030	.173	.093	.028		
6.0	.219	.110	.031	.209	.106	.030	.191	.098	.028	.174	.091	.027	.158	.083	.025		
7.0	.202	.100	.028	.193	.096	.027	.176	.089	.026	.161	.082	.024	.146	.076	.022		
8.0	.187	.091	.026	.179	.088	.025	.164	.082	.023	.149	.076	.022	.136	.070	.020		
9.0	.174	.084	.024	.167	.081	.023	.153	.075	.021	.139	.070	.020	.127	.064	.019		
10.0	.163	.078	.022	.156	.075	.021	.143	.070	.020	.131	.065	.018	.119	.060	.017		

pcc	80%			70%			50%			30%			10%			0	
pw	50%	30%	10%	50%	30%	10%	50%	30%	10%	50%	30%	10%	50%	30%	10%	0	
pfc	20%			20%			20%			20%			20%			0	
RCR	RCR:Room Cavity Ratio						Ceiling Cavity Exitance Coefficients(CCEC)										
0.0	.394	.394	.394	.337	.337	.337	.230	.230	.230	.132	.132	.132	.042	.042	.042		
1.0	.391	.361	.334	.334	.310	.287	.229	.213	.199	.132	.123	.116	.042	.040	.037		
2.0	.384	.338	.300	.329	.291	.259	.225	.202	.181	.130	.117	.106	.042	.038	.035		
3.0	.377	.322	.279	.323	.278	.242	.222	.193	.170	.128	.113	.100	.041	.037	.033		
4.0	.369	.310	.265	.317	.268	.230	.218	.187	.162	.126	.109	.096	.041	.036	.032		
5.0	.361	.300	.255	.310	.260	.222	.214	.182	.157	.124	.107	.093	.040	.035	.031		
6.0	.354	.293	.248	.304	.253	.216	.210	.177	.153	.122	.104	.091	.039	.034	.030		
7.0	.347	.286	.243	.299	.248	.212	.206	.174	.150	.120	.102	.089	.039	.034	.030		
8.0	.340	.281	.240	.293	.243	.209	.203	.171	.148	.118	.101	.088	.038	.033	.029		
9.0	.334	.276	.236	.288	.239	.206	.200	.168	.146	.116	.099	.087	.038	.033	.029		
10.0	.329	.272	.234	.283	.236	.204	.197	.166	.145	.115	.098	.087	.037	.032	.029		

C Range: 0 - 360DEG
 C Interval: 30.0DEG
 Test Speed: HIGH
 Temperature:25.3DEG
 Operators:LPC
 Test Date:2021-11-30

γ Range: 0 - 180DEG
 γ Interval: 1.0DEG
 Test System:EVERFINE GO-2000B_V1 SYSTEM V2.0.362
 Humidity:65.0%
 Test Distance:9.200m [K=1.0000]
 Remarks:

UGR(Unified Glare Rating) Table

Test:U:24.00V I:0.2256A P:5.414W PF:1.000 Freq:0Hz Lamp Flux:178.317x1 lm											
NAME: SF21-24V-3528-72-4500-80						TYPE:硅胶			WEIGHT:		
SPEC.:						DIM.: 28mm*11.5mm			SERIAL No.:2021113001		
MFR.: OLYMPIA						SUR.:1*0.016			Shielding Angle:		
ceiling/cavity	0.7	0.7	0.5	0.5	0.3	0.7	0.7	0.5	0.5	0.3	
walls	0.5	0.3	0.5	0.3	0.3	0.5	0.3	0.5	0.3	0.3	
working plane	0.2	0.2	0.2	0.2	0.2	0.2	0.2	0.2	0.2	0.2	
Room dimensions		Viewed crosswise					Viewed endwise				
x = 2H y = 2H	21.5	22.7	22.1	23.4	24.1	19.1	20.4	19.8	21.0	21.8	
	3H	24.3	25.4	24.9	26.1	26.9	20.6	21.7	21.2	22.4	23.2
	4H	25.9	27.0	26.5	27.6	28.4	21.1	22.2	21.8	22.9	23.7
	6H	27.6	28.7	28.3	29.4	30.2	21.5	22.5	22.2	23.2	24.0
	8H	28.6	29.6	29.3	30.3	31.1	21.6	22.6	22.3	23.3	24.1
	12H	29.7	30.7	30.4	31.4	32.2	21.6	22.6	22.3	23.3	24.2
4H	2H	22.1	23.2	22.7	23.8	24.6	20.4	21.5	21.1	22.2	23.0
	3H	25.1	26.1	25.8	26.8	27.6	22.2	23.2	22.9	23.9	24.7
	4H	26.9	27.8	27.6	28.5	29.4	23.0	23.9	23.7	24.6	25.5
	6H	28.9	29.7	29.6	30.4	31.3	23.6	24.4	24.4	25.2	26.1
	8H	30.0	30.7	30.7	31.5	32.4	23.9	24.6	24.6	25.4	26.3
	12H	31.2	31.9	32.0	32.7	33.6	24.0	24.7	24.8	25.5	26.4
8H	4H	27.3	28.0	28.0	28.8	29.7	24.3	25.0	25.0	25.8	26.7
	6H	29.6	30.2	30.4	31.0	32.0	25.4	26.0	26.2	26.8	27.8
	8H	30.9	31.5	31.7	32.3	33.3	25.9	26.4	26.7	27.2	28.2
	12H	32.4	32.9	33.2	33.7	34.7	26.3	26.8	27.1	27.6	28.6
12H	4H	27.3	28.0	28.1	28.8	29.7	24.7	25.4	25.5	26.2	27.1
	6H	29.7	30.3	30.5	31.1	32.1	26.1	26.6	26.9	27.4	28.4
	8H	31.2	31.7	32.0	32.5	33.5	26.8	27.3	27.6	28.1	29.1
Variations with the observer position at spacings:											
S = 1.0H	+ 0.1 / - 0.1					+ 0.1 / - 0.1					
1.5H	+ 0.2 / - 0.3					+ 0.2 / - 0.3					
2.0H	+ 0.3 / - 0.4					+ 0.3 / - 0.4					

CIE Pub.117, 178.3 lm Total Lamp Luminous Flux Correct (8log(F/F0) = -6.0)

C Range: 0 - 360DEG
 C Interval: 30.0DEG
 Test Speed: HIGH
 Temperature:25.3DEG
 Operators:LPC
 Test Date:2021-11-30

γ Range: 0 - 180DEG
 γ Interval: 1.0DEG
 Test System:EVERFINE GO-2000B_V1 SYSTEM V2.0.362
 Humidity:65.0%
 Test Distance:9.200m [K=1.0000]
 Remarks:

UTILIZATION FACTORS TABLE

Test:U:24.00V I:0.2256A P:5.414W PF:1.000 Freq:0Hz Lamp Flux:178.317x1 lm		
NAME: SF21-24V-3528-72-4500-80	TYPE: 硅胶	WEIGHT:
SPEC.:	DIM.: 28mm*11.5mm	SERIAL No.:2021113001
MFR.: OLYMPIA	SUR.:1*0.016	Shielding Angle:

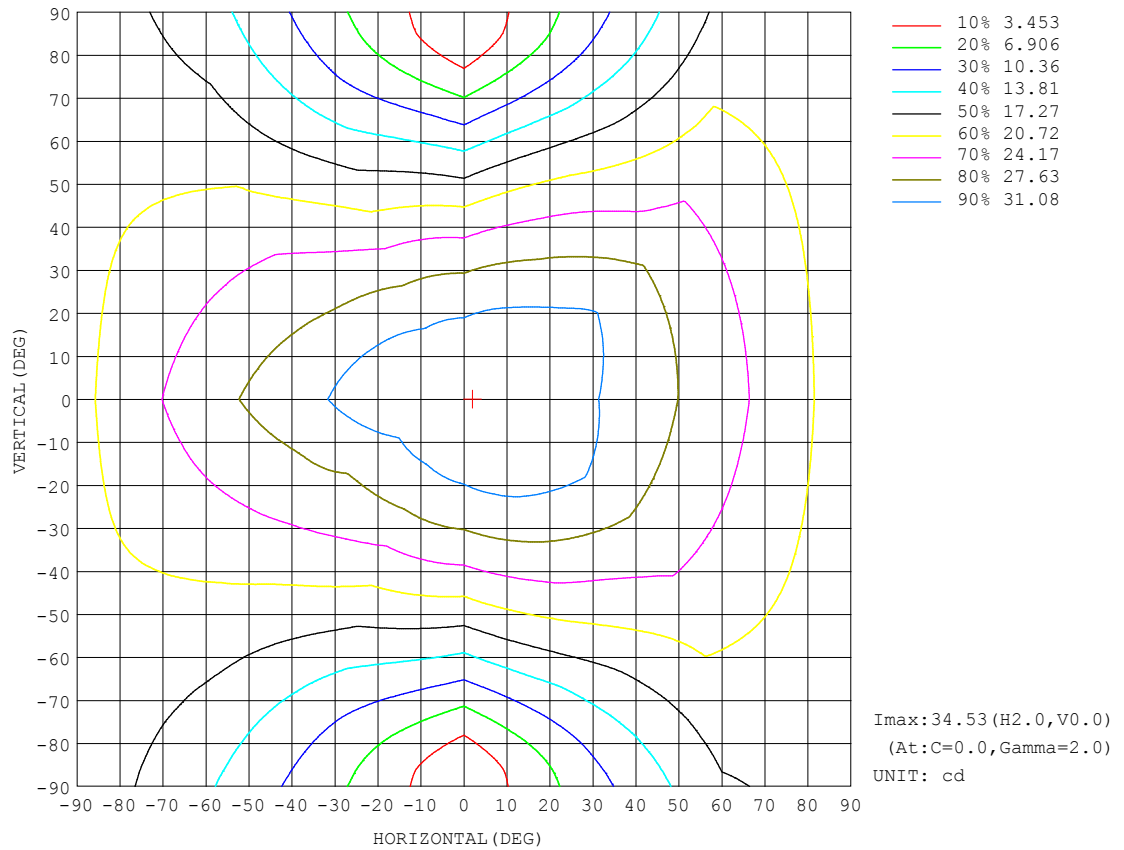
REFLECTANCE										
Ceiling	0.8	0.8	0.8	0.7	0.7	0.7	0.5	0.5	0.5	0
Walls	0.7	0.5	0.3	0.7	0.5	0.3	0.7	0.5	0.3	0
Working plane	0.2	0.2	0.2	0.2	0.2	0.2	0.2	0.2	0.2	0
ROOM INDEX	UTILIZATION FACTORS (PERCENT) $k(RI) \times RCR = 5$									
$k = 0.60$	45	33	26	44	32	25	42	31	25	18
0.80	54	41	33	52	40	33	49	38	31	23
1.00	62	49	40	60	47	40	55	47	38	28
1.25	69	56	47	66	54	46	61	51	44	33
1.50	74	61	53	71	59	51	65	55	48	37
2.00	81	70	61	77	67	59	71	62	56	42
2.50	86	75	67	82	72	65	74	67	60	46
3.00	90	80	72	85	77	70	77	70	65	49
4.00	94	86	79	90	82	76	81	75	70	53
5.00	97	90	84	92	86	81	83	78	74	56
ROOM INDEX	UF (total)									Direct
According to DIN EN 13032-2 2004			Suspended					SHRNOM = 1.25		

C Range: 0 - 360DEG
C Interval: 30.0DEG
Test Speed: HIGH
Temperature:25.3DEG
Operators:LPC
Test Date:2021-11-30

γ Range: 0 - 180DEG
 γ Interval: 1.0DEG
Test System:EVERFINE GO-2000B_V1 SYSTEM V2.0.362
Humidity:65.0%
Test Distance:9.200m [K=1.0000]
Remarks:

ISOCANDELA DIAGRAM

Test:U:24.00V I:0.2256A P:5.414W PF:1.000 Freq:0Hz Lamp Flux:178.317x1 lm		
NAME: SF21-24V-3528-72-4500-80	TYPE: 硅胶	WEIGHT:
SPEC.:	DIM.: 28mm*11.5mm	SERIAL No.:2021113001
MFR.: OLYMPIA	SUR.:1*0.016	Shielding Angle:

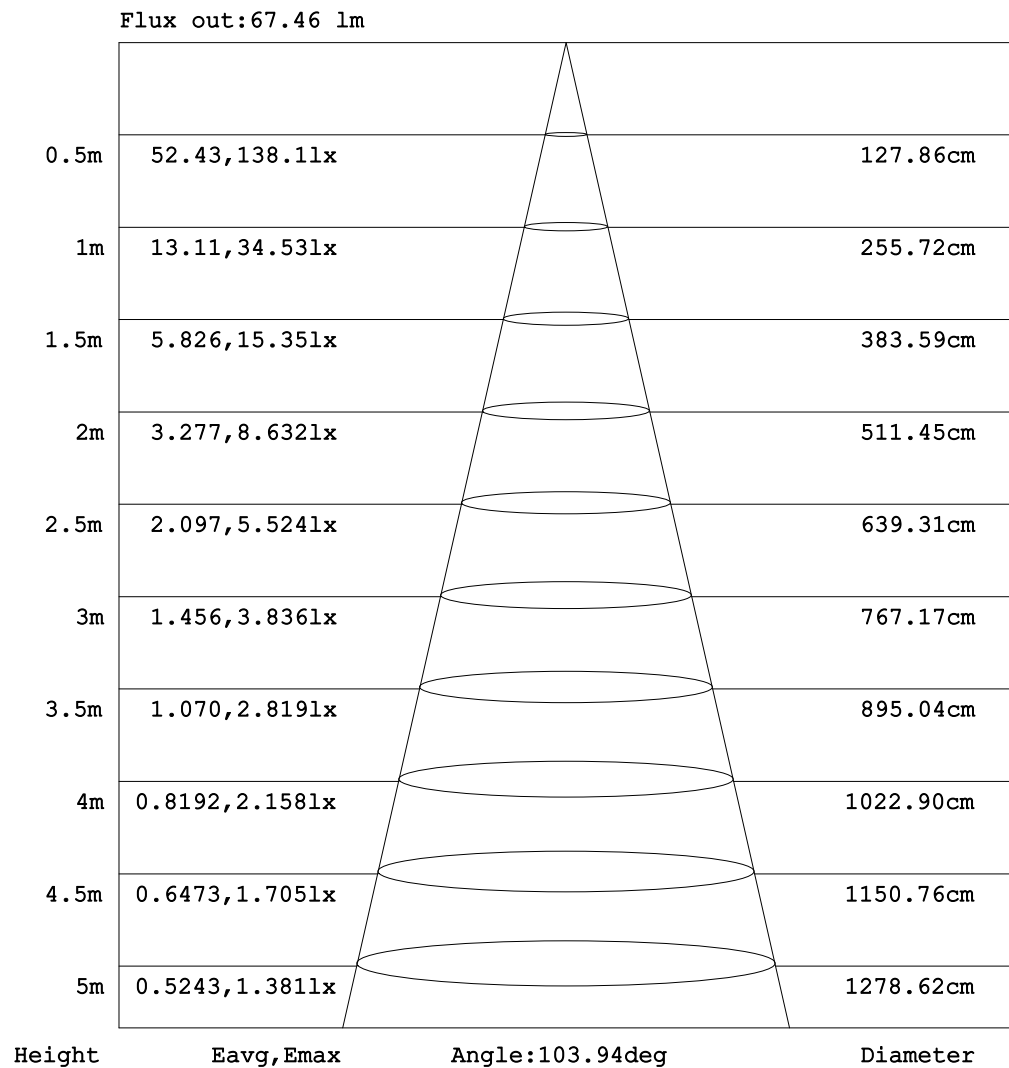


C Range: 0 - 360DEG
C Interval: 30.0DEG
Test Speed: HIGH
Temperature: 25.3DEG
Operators: LPC
Test Date: 2021-11-30

γ Range: 0 - 180DEG
 γ Interval: 1.0DEG
Test System: EVERFINE GO-2000B_V1 SYSTEM V2.0.362
Humidity: 65.0%
Test Distance: 9.200m [K=1.0000]
Remarks:

AAI Figure

Test:U:24.00V I:0.2256A P:5.414W PF:1.000 Freq:0Hz Lamp Flux:178.317x1 lm		
NAME: SF21-24V-3528-72-4500-80	TYPE: 硅胶	WEIGHT:
SPEC.:	DIM.: 28mm*11.5mm	SERIAL No.:2021113001
MFR.: OLYMPIA	SUR.:1*0.016	Shielding Angle:



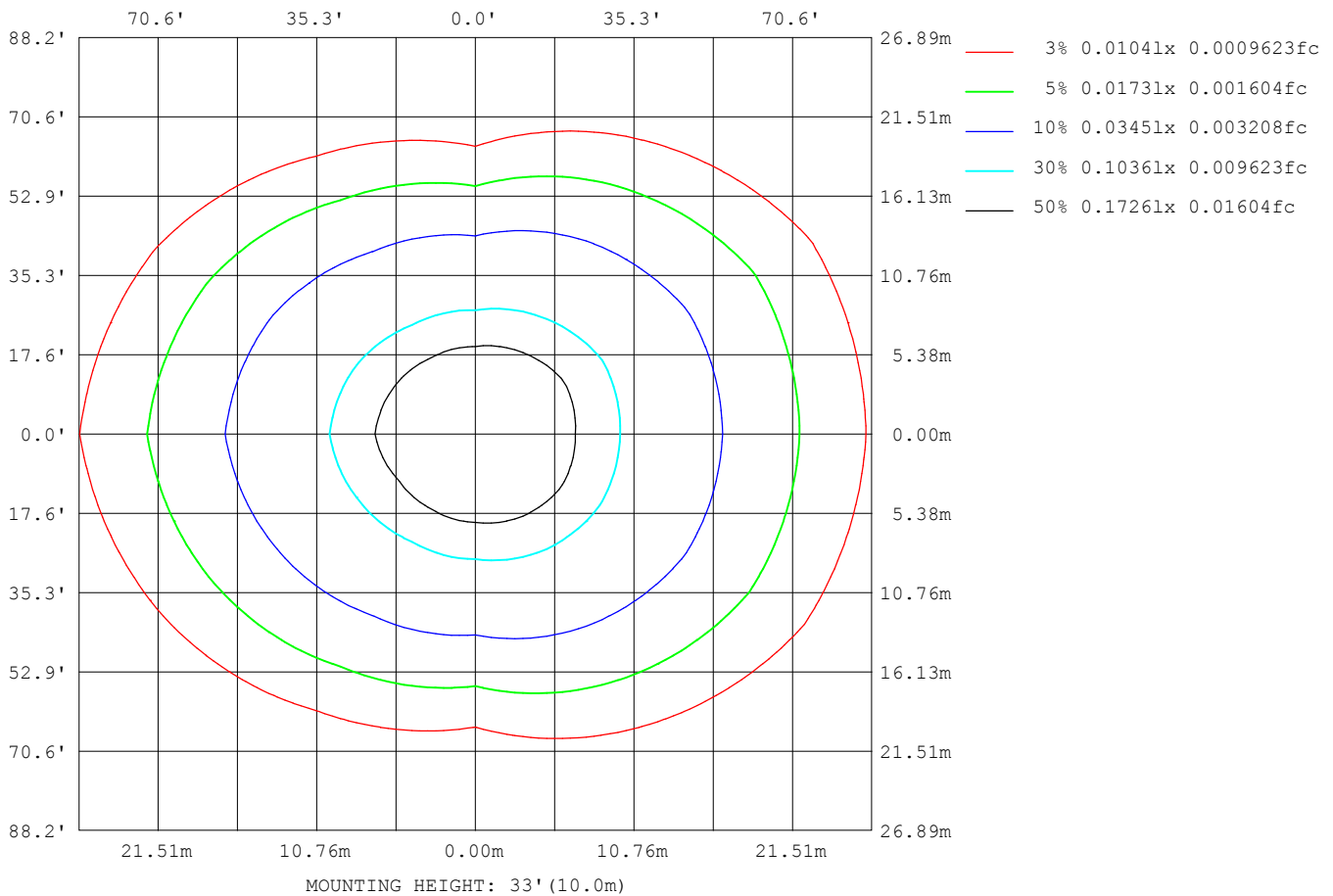
Note: The Curves indicate the illuminated area and the average illumination when the luminaire is at different distance.

C Range: 0 - 360DEG
 C Interval: 30.0DEG
 Test Speed: HIGH
 Temperature: 25.3DEG
 Operators: LPC
 Test Date: 2021-11-30

γ Range: 0 - 180DEG
 γ Interval: 1.0DEG
 Test System: EVERFINE GO-2000B_V1 SYSTEM V2.0.362
 Humidity: 65.0%
 Test Distance: 9.200m [K=1.0000]
 Remarks:

ISOLUX DIAGRAM

Test:U:24.00V I:0.2256A P:5.414W PF:1.000 Freq:0Hz Lamp Flux:178.317x1 lm		
NAME: SF21-24V-3528-72-4500-80	TYPE: 硅胶	WEIGHT:
SPEC.:	DIM.: 28mm*11.5mm	SERIAL No.:2021113001
MFR.: OLYMPIA	SUR.:1*0.016	Shielding Angle:



C Range: 0 - 360DEG
C Interval: 30.0DEG
Test Speed: HIGH
Temperature:25.3DEG
Operators:LPC
Test Date:2021-11-30

γ Range: 0 - 180DEG
 γ Interval: 1.0DEG
Test System:EVERFINE GO-2000B_V1 SYSTEM V2.0.362
Humidity:65.0%
Test Distance:9.200m [K=1.0000]
Remarks:

LED Avg.L Report

Test:U:24.00V I:0.2256A P:5.414W PF:1.000 Freq:0Hz Lamp Flux:178.317x1 lm		
NAME: SF21-24V-3528-72-4500-80	TYPE:硅胶	WEIGHT:
SPEC.:	DIM.: 28mm*11.5mm	SERIAL No.:2021113001
MFR.: OLYMPIA	SUR.:1*0.016	Shielding Angle:

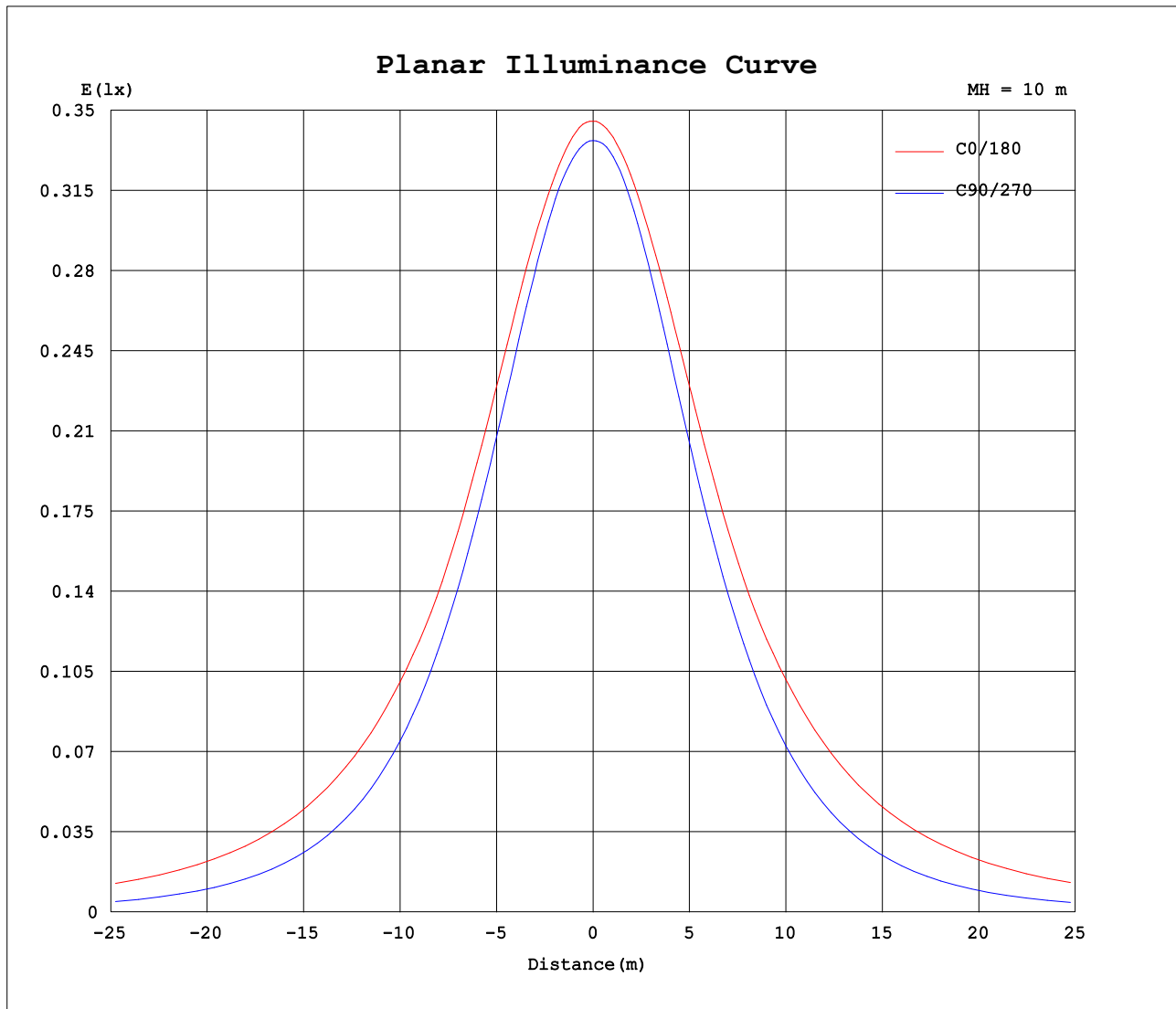
AvgL	cd/m2
L_0~180 (65) av	3675
L_0~180 (75) av	5484
L_0~180 (85) av	14609
L_90~270 (65) av	1491
L_90~270 (75) av	1127
L_90~270 (85) av	519
L_45 (65) av	2796
L_45 (75) av	3867
L_45 (85) av	9766

Standard: GB/T 29293-2012

C Range: 0 - 360DEG
C Interval: 30.0DEG
Test Speed: HIGH
Temperature:25.3DEG
Operators:LPC
Test Date:2021-11-30

γ Range: 0 - 180DEG
γ Interval: 1.0DEG
Test System:EVERFINE GO-2000B_V1 SYSTEM V2.0.362
Humidity:65.0%
Test Distance:9.200m [K=1.0000]
Remarks:

Planar Illuminance Curve



C Range: 0 - 360DEG
C Interval: 30.0DEG
Test Speed: HIGH
Temperature: 25.3DEG
Operators: LPC
Test Date: 2021-11-30

γ Range: 0 - 180DEG
 γ Interval: 1.0DEG
Test System: EVERFINE GO-2000B_V1 SYSTEM V2.0.362
Humidity: 65.0%
Test Distance: 9.200m [K=1.0000]
Remarks:

LUMINOUS DISTRIBUTION INTENSITY DATA

Test:U:24.00V I:0.2256A P:5.414W PF:1.000 Freq:0Hz Lamp Flux:178.317x1 lm		
NAME: SF21-24V-3528-72-4500-80	TYPE: 硅胶	WEIGHT:
SPEC.:	DIM.: 28mm*11.5mm	SERIAL No.:2021113001
MFR.: OLYMPIA	SUR.:1*0.016	Shielding Angle:

Table--1

UNIT: cd

C (DEG) γ (DEG)	0	30	60	90	120	150	180	210	240	270	300	330						
0	34.5	34.4	33.9	33.7	33.7	33.6	34.5	34.4	33.9	33.7	33.7	33.6						
5	34.5	34.5	34.0	33.5	33.3	33.2	34.4	34.1	33.6	33.6	33.7	34.0						
10	34.1	34.3	33.8	33.1	32.6	32.5	34.1	33.5	33.0	33.0	33.6	34.1						
15	33.7	34.0	33.3	32.2	31.7	31.6	33.7	32.8	32.0	32.1	33.0	34.0						
20	33.1	33.4	32.4	31.0	30.4	30.5	33.1	31.9	30.7	30.8	32.1	33.5						
25	32.3	32.7	31.3	29.5	28.9	29.2	32.4	30.8	29.2	29.2	30.9	32.9						
30	31.4	31.8	29.9	27.7	27.2	28.0	31.4	29.5	27.5	27.3	29.5	32.2						
35	30.2	30.6	28.3	25.7	25.4	27.1	30.3	28.1	25.7	25.3	28.0	31.4						
40	29.1	29.3	26.6	23.5	23.4	26.1	29.3	27.0	23.7	23.0	26.5	30.3						
45	28.4	27.9	24.8	21.1	21.6	24.9	28.7	26.0	21.7	20.5	24.8	29.1						
50	27.6	26.4	23.0	18.6	19.8	23.7	28.0	24.9	19.9	18.0	23.0	27.7						
55	26.6	25.4	20.9	16.0	17.9	22.4	27.2	23.7	18.0	15.3	21.1	26.2						
60	25.5	24.2	18.8	13.3	16.0	21.2	26.2	22.4	16.1	12.5	19.0	25.1						
65	24.5	22.9	16.7	10.5	14.1	20.0	25.2	21.2	14.3	9.67	16.9	24.0						
70	23.4	21.6	14.7	7.67	12.3	18.8	24.2	20.0	12.4	6.96	14.8	22.8						
75	22.2	20.4	13.0	4.97	10.8	17.6	23.2	18.8	10.8	4.36	13.1	21.5						
80	21.1	19.2	11.4	2.63	9.43	16.4	22.1	17.6	9.51	2.11	11.5	20.4						
85	19.8	18.0	10.1	0.90	8.41	15.3	20.9	16.5	8.43	0.55	10.2	19.3						
90	18.7	16.9	9.12	0.52	7.59	14.3	19.7	15.4	7.62	0.40	9.19	18.1						
95	17.5	15.8	8.45	0.52	7.09	13.4	18.5	14.4	7.03	0.39	8.48	17.1						
100	16.4	13.9	8.06	0.56	6.83	11.6	17.0	12.5	6.71	0.45	8.06	15.0						
105	15.1	13.2	7.30	0.67	5.62	11.3	16.0	12.0	5.69	0.53	7.32	14.3						
110	14.2	12.6	7.06	0.75	5.27	10.9	15.1	11.6	5.39	0.58	7.08	13.7						
115	13.4	12.0	6.76	0.92	5.08	9.79	14.2	10.8	5.13	0.70	7.02	12.7						
120	12.6	11.5	6.80	1.10	4.99	9.11	12.8	10.0	5.09	0.84	6.54	12.1						
125	11.9	11.0	5.97	1.29	4.90	8.39	12.0	9.02	5.12	0.97	6.42	11.2						
130	11.2	10.4	4.87	1.48	4.53	8.11	10.8	8.79	4.88	1.11	5.97	10.7						
135	10.5	8.95	4.56	1.64	4.20	7.59	10.7	8.30	4.48	1.24	5.71	9.41						
140	9.70	7.44	4.04	1.79	3.75	6.94	9.72	7.80	4.05	1.32	5.19	7.88						
145	8.96	6.59	3.91	1.90	3.32	6.06	9.12	7.00	3.66	1.40	4.71	7.06						
150	8.21	5.65	3.76	2.11	2.92	5.19	8.35	6.28	3.33	1.55	4.34	6.29						
155	7.13	4.67	3.83	2.24	2.85	4.35	7.59	5.36	2.86	1.82	4.15	5.52						
160	5.96	3.55	4.06	2.37	2.50	3.53	6.60	4.75	2.88	2.10	4.28	4.67						
165	4.59	1.81	4.07	2.50	0.90	3.01	5.62	3.80	0.99	2.39	4.29	3.88						
170	2.18	2.07	4.04	2.58	0.89	2.15	2.19	2.91	0.93	2.64	4.23	3.83						
175	1.66	2.49	3.84	2.63	0.86	1.22	1.62	1.37	0.87	2.81	4.10	3.78						
180	0.86	0.85	2.15	2.62	2.79	2.13	0.85	0.86	1.52	2.97	2.82	2.11						

C Range: 0 - 360DEG
C Interval: 30.0DEG
Test Speed: HIGH
Temperature:25.3DEG
Operators:LPC
Test Date:2021-11-30

γ Range: 0 - 180DEG
γ Interval: 1.0DEG
Test System:EVERFINE GO-2000B_V1 SYSTEM V2.0.362
Humidity:65.0%
Test Distance:9.200m [K=1.0000]
Remarks:

Photometric Data Table [cd]

G/C	0.0	30.0	60.0	90.0	120.0	150.0	180.0	210.0	240.0	270.0
0.0	34.53	34.41	33.92	33.68	33.66	33.65	34.53	34.41	33.92	33.68
3.0	34.53	34.47	33.99	33.62	33.44	33.37	34.48	34.24	33.75	33.68
6.0	34.41	34.47	33.95	33.44	33.15	33.05	34.38	33.99	33.47	33.51
9.0	34.20	34.39	33.90	33.18	32.77	32.67	34.20	33.65	33.10	33.19
12.0	33.95	34.22	33.69	32.73	32.32	32.20	33.96	33.23	32.59	32.69
15.0	33.71	33.98	33.30	32.21	31.68	31.62	33.66	32.81	32.01	32.08
18.0	33.41	33.66	32.81	31.51	30.94	30.97	33.33	32.33	31.28	31.34
21.0	32.99	33.29	32.22	30.73	30.12	30.27	32.98	31.70	30.44	30.48
24.0	32.49	32.84	31.53	29.83	29.22	29.50	32.53	31.00	29.54	29.51
27.0	31.97	32.36	30.76	28.81	28.25	28.69	32.02	30.26	28.56	28.48
30.0	31.36	31.79	29.90	27.74	27.24	27.97	31.43	29.46	27.53	27.35
33.0	30.70	31.11	28.97	26.56	26.13	27.43	30.79	28.61	26.47	26.13
36.0	30.00	30.38	27.99	25.29	25.01	26.90	30.11	27.79	25.32	24.83
39.0	29.29	29.62	26.97	23.98	23.82	26.29	29.46	27.20	24.14	23.45
42.0	28.86	28.80	25.91	22.58	22.63	25.63	29.05	26.65	22.93	22.02
45.0	28.44	27.91	24.84	21.14	21.56	24.93	28.72	26.03	21.70	20.55
48.0	27.95	27.00	23.74	19.67	20.51	24.20	28.30	25.37	20.59	19.02
51.0	27.40	26.20	22.58	18.12	19.43	23.45	27.85	24.67	19.53	17.43
54.0	26.81	25.58	21.36	16.51	18.30	22.68	27.34	23.94	18.43	15.84
57.0	26.15	24.92	20.11	14.91	17.14	21.91	26.82	23.19	17.29	14.17
60.0	25.51	24.21	18.84	13.25	16.00	21.17	26.25	22.41	16.15	12.46
63.0	24.88	23.45	17.55	11.56	14.85	20.43	25.65	21.66	15.00	10.81
66.0	24.25	22.65	16.27	9.921	13.75	19.69	25.03	20.93	13.89	9.166
69.0	23.60	21.89	15.02	8.217	12.64	19.00	24.42	20.20	12.80	7.508
72.0	22.94	21.15	14.01	6.564	11.66	18.28	23.81	19.50	11.77	5.911
75.0	22.25	20.42	12.99	4.972	10.75	17.57	23.18	18.77	10.85	4.362
78.0	21.56	19.71	12.01	3.504	9.924	16.89	22.53	18.07	10.01	2.949
81.0	20.84	18.99	11.08	2.228	9.204	16.22	21.86	17.37	9.260	1.732
84.0	20.10	18.30	10.31	1.168	8.586	15.57	21.14	16.69	8.627	0.7718
87.0	19.37	17.57	9.657	0.5475	8.063	14.93	20.41	16.02	8.075	0.4227
90.0	18.67	16.88	9.119	0.5205	7.591	14.30	19.69	15.39	7.617	0.4000
93.0	17.98	16.24	8.681	0.5027	7.258	13.74	19.00	14.74	7.206	0.3966
96.0	17.31	15.63	8.359	0.5227	7.032	13.25	18.32	14.17	6.945	0.4048
99.0	16.66	14.95	8.122	0.5529	6.871	12.13	17.62	12.93	6.764	0.4362
102.0	15.69	13.47	7.966	0.6234	6.735	11.52	16.62	12.31	6.643	0.4723
105.0	15.10	13.21	7.300	0.6685	5.618	11.32	16.01	12.04	5.688	0.5316
108.0	14.54	12.83	7.145	0.6988	5.252	11.06	15.42	11.78	5.532	0.5593
111.0	14.02	12.46	7.014	0.7843	5.272	10.75	14.86	11.47	5.355	0.5979
114.0	13.52	12.12	6.882	0.8749	5.095	9.984	14.34	10.99	5.156	0.6733
117.0	13.05	11.80	6.880	0.9904	5.031	9.487	13.27	10.49	5.093	0.7586
120.0	12.62	11.50	6.796	1.096	4.986	9.111	12.78	10.03	5.086	0.8440
123.0	12.18	11.21	6.350	1.207	5.021	8.849	12.33	9.590	5.109	0.9195
126.0	11.77	10.89	5.732	1.327	4.860	8.042	11.91	8.647	5.121	0.9949
129.0	11.33	10.59	4.988	1.438	4.640	8.241	11.26	8.901	4.940	1.085
132.0	10.89	9.838	4.785	1.548	4.368	7.920	10.84	8.610	4.733	1.151
135.0	10.46	8.954	4.560	1.639	4.197	7.593	10.66	8.299	4.482	1.241
138.0	10.00	8.174	4.223	1.729	3.941	7.196	10.17	8.047	4.231	1.281
141.0	9.551	7.216	3.976	1.815	3.640	6.783	8.678	7.611	3.969	1.337
144.0	9.113	6.703	3.920	1.885	3.388	6.276	9.216	7.108	3.733	1.397
147.0	8.671	6.195	3.860	1.966	3.192	5.698	8.803	6.756	3.543	1.437
150.0	8.214	5.647	3.765	2.106	2.921	5.190	8.346	6.283	3.331	1.548
153.0	7.617	5.039	3.724	2.191	2.814	4.687	7.908	5.741	3.025	1.718
156.0	6.898	4.451	3.894	2.267	2.855	4.155	7.426	5.318	2.855	1.879
159.0	6.199	3.792	4.020	2.347	2.609	3.638	6.837	4.831	2.880	2.040
162.0	5.347	2.821	4.071	2.418	1.097	3.165	6.179	4.424	2.282	2.216
165.0	4.591	1.815	4.074	2.498	0.8976	3.011	5.621	3.797	0.9937	2.387
168.0	2.393	1.950	4.052	2.548	0.8918	2.786	2.969	3.193	0.9576	2.553
171.0	2.067	2.203	4.031	2.583	0.8863	1.963	2.039	2.715	0.9215	2.693
174.0	1.755	2.518	3.901	2.614	0.8794	1.406	1.723	1.723	0.8854	2.804
177.0	1.514	2.399	3.640	2.633	0.8544	0.8493	1.572	0.8812	0.8493	2.889
180.0	0.8594	0.8493	2.151	2.623	2.794	2.131	0.8544	0.8644	1.518	2.970
G/C	300.0	330.0								
0.0	33.66	33.65								
3.0	33.74	33.88								
6.0	33.73	34.01								
9.0	33.65	34.07								
12.0	33.36	34.05								
15.0	32.97	33.95								
18.0	32.46	33.70								
21.0	31.86	33.37								
24.0	31.15	33.01								
27.0	30.36	32.58								
30.0	29.53	32.16								

C Range: 0 - 360DEG
 C Interval: 30.0DEG
 Test Speed: HIGH
 Temperature: 25.3DEG
 Operators: LPC
 Test Date: 2021-11-30

γ Range: 0 - 180DEG
 γ Interval: 1.0DEG
 Test System: EVERFINE GO-2000B_V1 SYSTEM V2.0.362
 Humidity: 65.0%
 Test Distance: 9.200m [K=1.0000]
 Remarks:

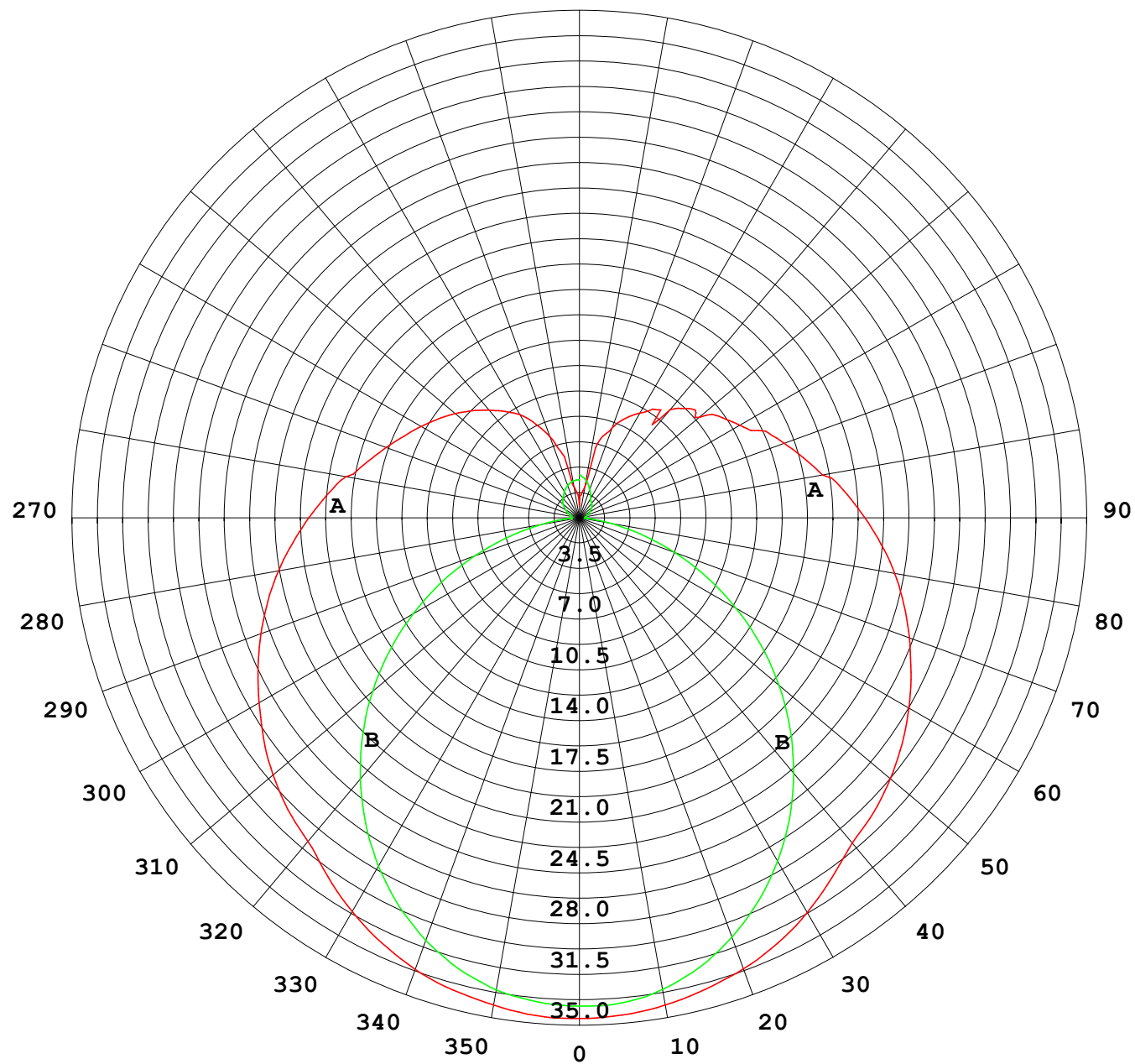
Photometric Data Table [cd]

33.0	28.66	31.74
36.0	27.73	31.18
39.0	26.79	30.55
42.0	25.79	29.85
45.0	24.78	29.09
48.0	23.76	28.25
51.0	22.68	27.41
54.0	21.50	26.50
57.0	20.26	25.66
60.0	19.01	25.10
63.0	17.74	24.46
66.0	16.47	23.76
69.0	15.20	23.05
72.0	14.13	22.31
75.0	13.13	21.55
78.0	12.14	20.87
81.0	11.21	20.18
84.0	10.41	19.51
87.0	9.743	18.85
90.0	9.190	18.15
93.0	8.733	17.50
96.0	8.377	16.90
99.0	8.121	15.95
102.0	7.768	14.62
105.0	7.316	14.27
108.0	7.056	13.92
111.0	7.101	13.50
114.0	6.927	12.85
117.0	6.614	12.42
120.0	6.538	12.09
123.0	6.533	11.33
126.0	6.317	11.19
129.0	6.065	10.89
132.0	5.855	10.07
135.0	5.708	9.410
138.0	5.421	8.812
141.0	5.080	7.870
144.0	4.789	7.234
147.0	4.578	6.695
150.0	4.336	6.288
153.0	4.136	5.857
156.0	4.182	5.374
159.0	4.275	4.841
162.0	4.283	4.314
165.0	4.291	3.876
168.0	4.281	3.795
171.0	4.222	3.840
174.0	4.141	3.815
177.0	4.005	3.734
180.0	2.819	2.106

C Range: 0 - 360DEG
C Interval: 30.0DEG
Test Speed: HIGH
Temperature:25.3DEG
Operators:LPC
Test Date:2021-11-30

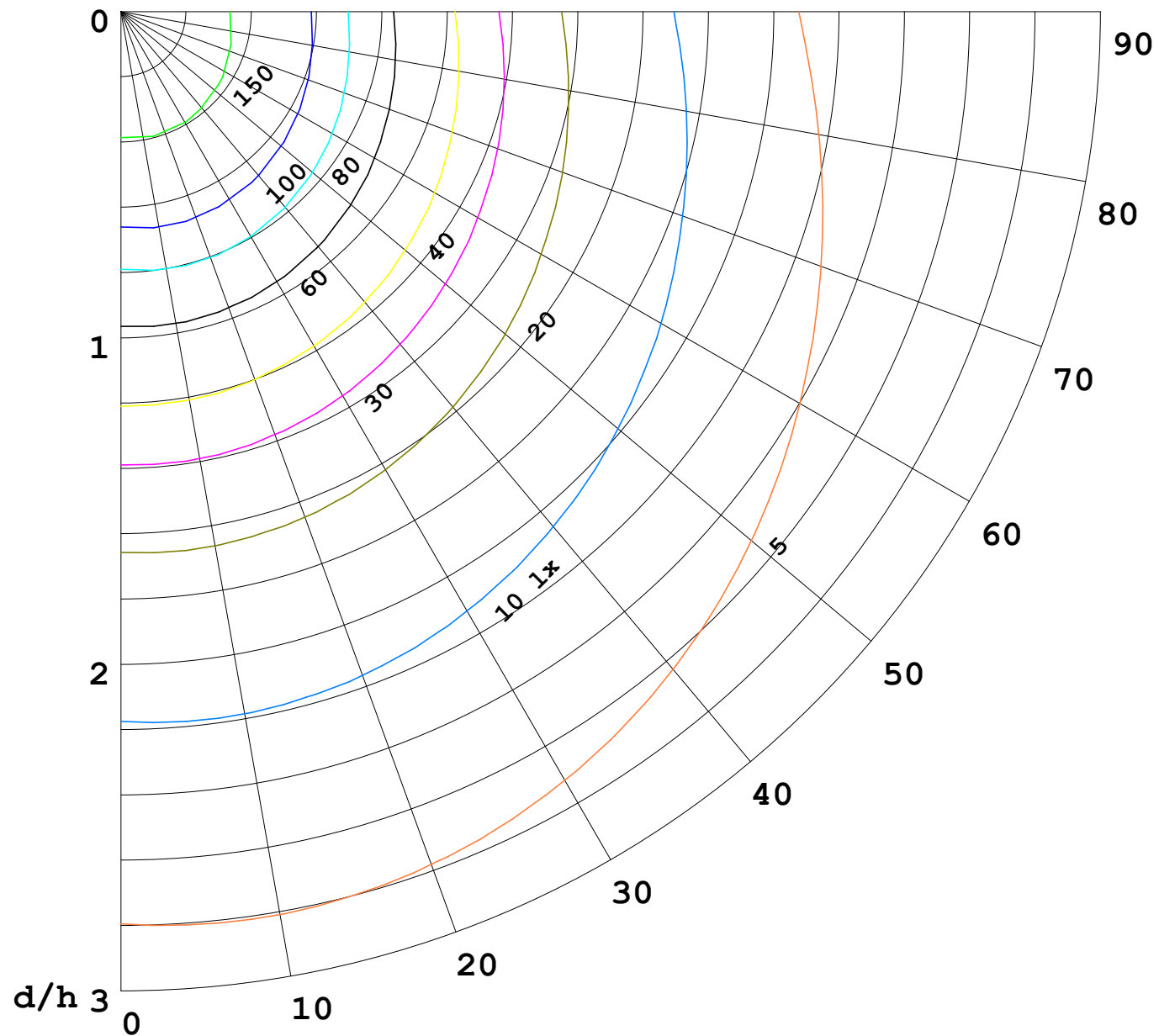
γ Range: 0 - 180DEG
γ Interval: 1.0DEG
Test System:EVERFINE GO-2000B_V1 SYSTEM V2.0.362
Humidity:65.0%
Test Distance:9.200m [K=1.0000]
Remarks:

I (cd)



1000 lm

$\kappa = 1$



F = 5000 lm
 K = 0.7
 Hcc = 0.0 m
 Hfc = 0.0 m
 Eave = 100 lx

	Pcc	Pw	Pfc
—	70	50	30
—	50	30	20

