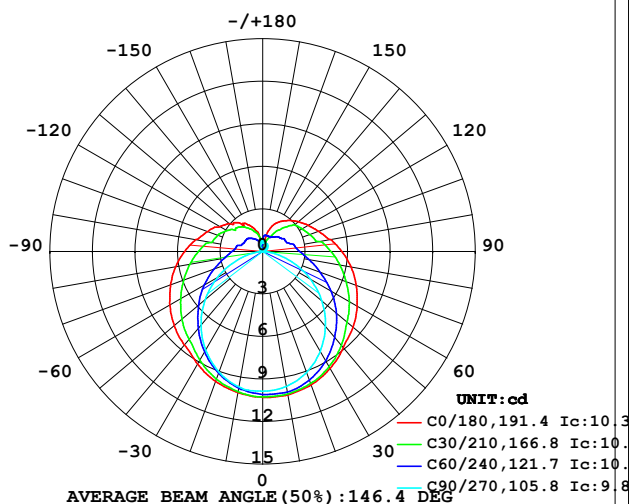


LUMINAIRE PHOTOMETRIC TEST REPORT

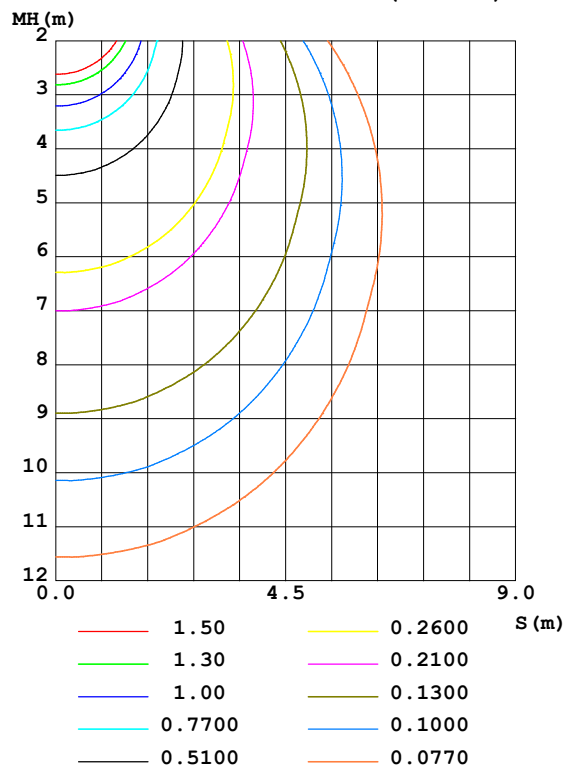
Test:U:24.00V I:0.2234A P:5.362W PF:1.000 Freq:0Hz Lamp Flux:51.8913x1 lm		
NAME: SF21-24V-3528-72-R	TYPE: 硅胶	WEIGHT:
SPEC.:	DIM.: 28mm*11.5mm	SERIAL No.:2021113002
MFR.: OLYMPIA	SUR.:1*0.016	Shielding Angle:

DATA OF LAMP		PHOTOMETRIC DATA				Eff: 9.68 lm/W
MODEL	3528	I _{max} (cd)	10.31	S/MH (C0/180)	1.33	
NOMINAL POWER (W)	5	LOR (%)	100.0	S/MH (C90/270)	1.22	
RATED VOLTAGE (V)	24	TOTAL FLUX (lm)	51.891	η UP, DN (C0-180)	12.4, 36.3	
NOMINAL FLUX (lm)	51.8913	CIE CLASS	SEMI-D.	η UP, DN (C180-360)	13.7, 37.6	
LAMPS INSIDE	1	η up (%)	26.1	CIBSE SHR NOM	1.50	
TEST VOLTAGE (V)	24.0	η down (%)	73.9	CIBSE SHR MAX	1.50	

LUMINOUS INTENSITY DISTRIBUTION DIAGRAM



C0 PLANE ISOLUX DIAGRAM (UNIT: lx)



C Range: 0 - 360DEG
C Interval: 30.0DEG
Test Speed: HIGH
Temperature: 25.3DEG
Operators: LPC
Test Date: 2021-11-30

γ Range: 0 - 180DEG
γ Interval: 1.0DEG
Test System: EVERFINE GO-2000B_V1 SYSTEM V2.0.362
Humidity: 65.0%
Test Distance: 9.200m [K=1.0000]
Remarks:

ZONAL FLUX DIAGRAM

ZONAL FLUX DIAGRAM:

γ	C0	C45	C90	C135	C180	C225	C270	C315	γ	Φ zone	Φ total	%lum, lamp
10	10.28	10.14	9.674	9.381	10.11	9.918	9.700	9.870	0- 10	0.9483	0.9483	1.83,1.83
20	10.01	9.778	9.081	8.687	9.749	9.353	9.042	9.672	10- 20	2.730	3.678	7.09,7.09
30	9.529	9.140	8.131	7.893	9.186	8.526	8.032	9.164	20- 30	4.186	7.864	15.2,15.2
40	8.846	8.268	6.889	7.049	8.604	7.573	6.766	8.491	30- 40	5.179	13.04	25.1,25.1
50	8.323	7.278	5.457	6.137	8.151	6.671	5.299	7.639	40- 50	5.692	18.74	36.1,36.1
60	7.700	6.313	3.883	5.172	7.558	5.731	3.700	6.659	50- 60	5.728	24.46	47.1,47.1
70	7.027	5.287	2.230	4.265	6.920	4.797	2.052	5.709	60- 70	5.322	29.79	57.4,57.4
80	6.333	4.420	0.7477	3.508	6.241	3.983	0.6191	4.855	70- 80	4.649	34.43	66.4,66.4
90	5.584	3.724	0.1505	2.958	5.503	3.360	0.0854	4.144	80- 90	3.926	38.36	73.9,73.9
100	4.896	3.163	0.1408	2.470	4.818	2.788	0.0804	3.534	90-100	3.364	41.72	80.4,80.4
110	4.192	2.674	0.1603	2.106	4.136	2.455	0.1356	3.125	100-110	2.768	44.49	85.7,85.7
120	3.704	2.503	0.2564	1.792	3.513	2.195	0.2009	2.724	110-120	2.296	46.79	90.2,90.2
130	3.282	2.236	0.3770	1.570	3.074	1.965	0.2188	2.508	120-130	1.854	48.64	93.7,93.7
140	2.860	1.739	0.4826	1.244	2.673	1.756	0.2795	1.991	130-140	1.406	50.05	96.4,96.4
150	2.433	1.251	0.5831	0.9548	2.226	1.440	0.3114	1.593	140-150	0.9354	50.98	98.3,98.3
160	1.875	1.008	0.6071	0.8290	1.698	1.128	0.5225	1.403	150-160	0.5677	51.55	99.3,99.3
170	0.6638	0.9261	0.6077	0.5099	0.5524	0.6089	0.6902	1.297	160-170	0.2731	51.82	99.9,99.9
180	0.2211	0.3292	0.6031	0.7865	0.2262	0.2186	0.7890	0.7614	170-180	0.0664	51.89	100,100
DEG	LUMINOUS INTENSITY:cd									UNIT:lm		

Conical surface Flux(90deg): 15.856 lm

%lum = 30.6%

%lamp = 30.6%

Conical surface Flux(120deg): 24.464 lm

%lum = 47.1%

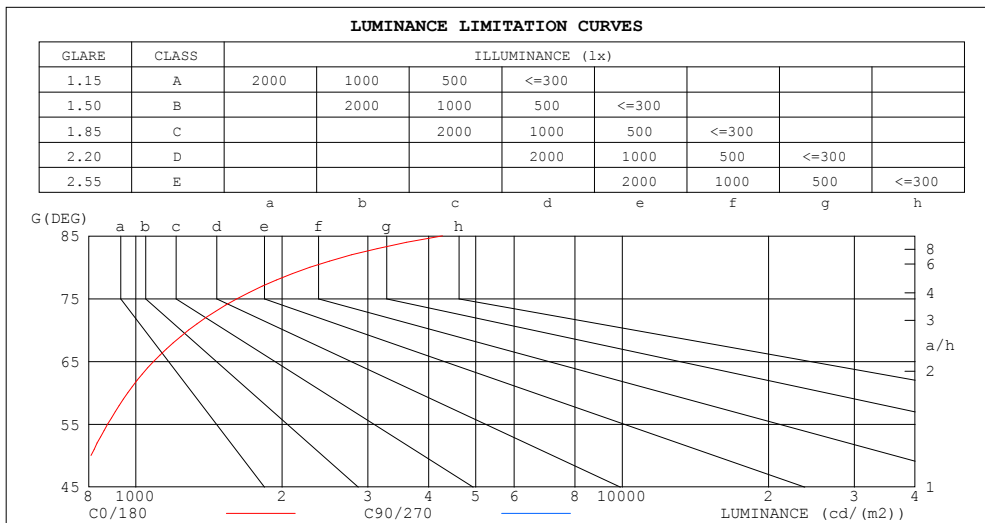
%lamp = 47.1%

C Range: 0 - 360DEG
 C Interval: 30.0DEG
 Test Speed: HIGH
 Temperature:25.3DEG
 Operators:LPC
 Test Date:2021-11-30

γ Range: 0 - 180DEG
 γ Interval: 1.0DEG
 Test System:EVERFINE GO-2000B_V1 SYSTEM V2.0.362
 Humidity:65.0%
 Test Distance:9.200m [K=1.0000]
 Remarks:

LUMINANCE LIMITATION CURVES

Test:U:24.00V I:0.2234A P:5.362W PF:1.000 Freq:0Hz Lamp Flux:51.8913x1 lm		
NAME: SF21-24V-3528-72-R	TYPE: 硅胶	WEIGHT:
SPEC.:	DIM.: 28mm*11.5mm	SERIAL No.:2021113002
MFR.: OLYMPIA	SUR.:1*0.016	Shielding Angle:



LUMINANCE cd/(m2)		
G (DEG)	C0/180	C90/270
85	4271	162
80	2279	269
75	1617	348
70	1284	407
65	1088	452
60	963	485
55	876	511
50	809	531
45	757	548

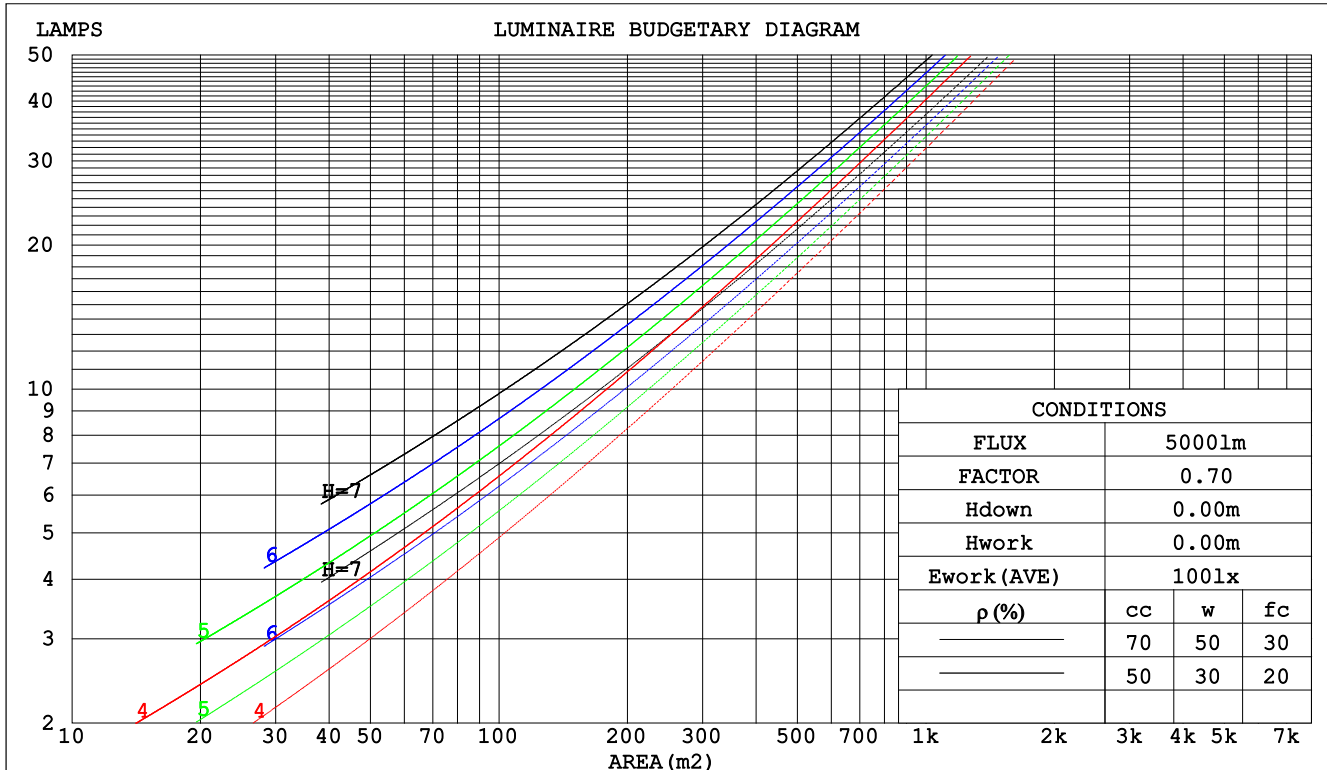
C Range: 0 - 360DEG
C Interval: 30.0DEG
Test Speed: HIGH
Temperature:25.3DEG
Operators:LPC
Test Date:2021-11-30

γ Range: 0 - 180DEG
 γ Interval: 1.0DEG
Test System:EVERFINE GO-2000B_V1 SYSTEM V2.0.362
Humidity:65.0%
Test Distance:9.200m [K=1.0000]
Remarks:

CU AND LUMINAIRE BUDGETARY ESTIMATE DIAGRAM

Test:U:24.00V I:0.2234A P:5.362W PF:1.000 Freq:0Hz Lamp Flux:51.8913x1 lm		
NAME: SF21-24V-3528-72-R	TYPE: 硅胶	WEIGHT:
SPEC.:	DIM.: 28mm*11.5mm	SERIAL No.:2021113002
MFR.: OLYMPIA	SUR.:1*0.016	Shielding Angle:

pcc	80%			70%			50%			30%			10%			0
pw	50%	30%	10%	50%	30%	10%	50%	30%	10%	50%	30%	10%	50%	30%	10%	0
pfc	20%			20%			20%			20%			20%			0
RCR	RCR:Room Cavity Ratio						Coefficients of Utilization(CU)									
0.0	1.13	1.13	1.13	1.07	1.07	1.07	.97	.97	.97	.87	.87	.87	.78	.78	.78	.74
1.0	.94	.88	.84	.89	.84	.80	.80	.76	.73	.71	.68	.66	.64	.61	.59	.55
2.0	.80	.72	.66	.76	.69	.63	.68	.63	.58	.61	.56	.52	.54	.51	.48	.44
3.0	.70	.61	.54	.66	.58	.51	.59	.53	.47	.53	.48	.43	.47	.43	.39	.36
4.0	.61	.52	.45	.58	.49	.43	.52	.45	.39	.47	.41	.36	.42	.37	.33	.30
5.0	.54	.45	.38	.51	.43	.36	.46	.39	.34	.42	.36	.31	.37	.32	.28	.25
6.0	.48	.39	.33	.46	.38	.31	.42	.34	.29	.37	.31	.27	.34	.29	.25	.22
7.0	.44	.35	.28	.42	.33	.27	.38	.31	.25	.34	.28	.24	.31	.26	.22	.19
8.0	.40	.31	.25	.38	.30	.24	.34	.27	.23	.31	.25	.21	.28	.23	.19	.17
9.0	.36	.28	.22	.35	.27	.22	.32	.25	.20	.29	.23	.19	.26	.21	.17	.15
10.0	.33	.25	.20	.32	.24	.19	.29	.23	.18	.26	.21	.17	.24	.19	.16	.14



C Range: 0 - 360DEG
 C Interval: 30.0DEG
 Test Speed: HIGH
 Temperature:25.3DEG
 Operators:LPC
 Test Date:2021-11-30

γ Range: 0 - 180DEG
 γ Interval: 1.0DEG
 Test System:EVERFINE GO-2000B_V1 SYSTEM V2.0.362
 Humidity:65.0%
 Test Distance:9.200m [K=1.0000]
 Remarks:

WEC AND CCEC

Test:U:24.00V I:0.2234A P:5.362W PF:1.000 Freq:0Hz Lamp Flux:51.8913x1 lm		
NAME: SF21-24V-3528-72-R	TYPE: 硅胶	WEIGHT:
SPEC.:	DIM.: 28mm*11.5mm	SERIAL No.:2021113002
MFR.: OLYMPIA	SUR.:1*0.016	Shielding Angle:

pcc	80%			70%			50%			30%			10%			0	
pw	50%	30%	10%	50%	30%	10%	50%	30%	10%	50%	30%	10%	50%	30%	10%	0	
pfc	20%			20%			20%			20%			20%			0	
RCR	RCR:Room Cavity Ratio						Wall Exitance Coefficients(WEC)										
0.0																	
1.0	.383	.218	.069	.368	.210	.067	.340	.195	.062	.313	.181	.058	.289	.168	.054		
2.0	.330	.181	.055	.316	.174	.054	.290	.161	.050	.267	.150	.047	.245	.138	.044		
3.0	.292	.156	.047	.280	.150	.045	.257	.139	.042	.235	.129	.039	.215	.119	.037		
4.0	.263	.137	.040	.252	.132	.039	.230	.122	.036	.211	.113	.034	.192	.104	.032		
5.0	.239	.122	.035	.229	.117	.034	.209	.109	.032	.191	.101	.030	.174	.093	.028		
6.0	.219	.110	.031	.209	.106	.030	.192	.098	.029	.175	.091	.027	.159	.084	.025		
7.0	.202	.100	.028	.193	.096	.027	.177	.089	.026	.162	.083	.024	.147	.076	.022		
8.0	.187	.091	.026	.179	.088	.025	.164	.082	.023	.150	.076	.022	.137	.070	.020		
9.0	.174	.084	.024	.167	.081	.023	.153	.076	.021	.140	.070	.020	.128	.065	.019		
10.0	.163	.078	.022	.156	.076	.021	.144	.070	.020	.131	.065	.019	.120	.060	.017		

pcc	80%			70%			50%			30%			10%			0	
pw	50%	30%	10%	50%	30%	10%	50%	30%	10%	50%	30%	10%	50%	30%	10%	0	
pfc	20%			20%			20%			20%			20%			0	
RCR	RCR:Room Cavity Ratio						Ceiling Cavity Exitance Coefficients(CCEC)										
0.0	.389	.389	.389	.333	.333	.333	.227	.227	.227	.130	.130	.130	.042	.042	.042		
1.0	.386	.356	.329	.330	.305	.283	.226	.210	.196	.130	.122	.114	.042	.039	.037		
2.0	.379	.333	.295	.325	.287	.255	.222	.199	.178	.128	.115	.104	.041	.037	.034		
3.0	.372	.317	.274	.319	.274	.237	.219	.190	.167	.126	.111	.098	.041	.036	.032		
4.0	.364	.305	.260	.312	.263	.226	.215	.184	.159	.124	.108	.094	.040	.035	.031		
5.0	.356	.295	.250	.306	.255	.218	.211	.178	.154	.122	.105	.091	.039	.034	.030		
6.0	.349	.287	.243	.300	.249	.212	.207	.174	.150	.120	.103	.089	.039	.034	.029		
7.0	.342	.281	.238	.294	.244	.208	.203	.171	.147	.118	.101	.088	.038	.033	.029		
8.0	.335	.276	.234	.289	.239	.204	.200	.168	.145	.116	.099	.086	.038	.032	.029		
9.0	.329	.271	.231	.284	.235	.202	.197	.165	.143	.114	.098	.085	.037	.032	.028		
10.0	.324	.267	.229	.279	.232	.200	.193	.163	.142	.113	.096	.085	.037	.032	.028		

C Range: 0 - 360DEG
 C Interval: 30.0DEG
 Test Speed: HIGH
 Temperature:25.3DEG
 Operators:LPC
 Test Date:2021-11-30

γ Range: 0 - 180DEG
 γ Interval: 1.0DEG
 Test System:EVERFINE GO-2000B_V1 SYSTEM V2.0.362
 Humidity:65.0%
 Test Distance:9.200m [K=1.0000]
 Remarks:

UGR(Unified Glare Rating) Table

Test:U:24.00V I:0.2234A P:5.362W PF:1.000 Freq:0Hz Lamp Flux:51.8913x1 lm										
NAME: SF21-24V-3528-72-R					TYPE: 硅胶			WEIGHT:		
SPEC.:					DIM.: 28mm*11.5mm			SERIAL No.:2021113002		
MFR.: OLYMPIA					SUR.:1*0.016			Shielding Angle:		
ceiling/cavity	0.7	0.7	0.5	0.5	0.3	0.7	0.7	0.5	0.5	0.3
walls	0.5	0.3	0.5	0.3	0.3	0.5	0.3	0.5	0.3	0.3
working plane	0.2	0.2	0.2	0.2	0.2	0.2	0.2	0.2	0.2	0.2
Room dimensions	Viewed crosswise					Viewed endwise				
x = 2H y = 2H	21.6	22.9	22.2	23.5	24.2	19.2	20.5	19.8	21.1	21.8
3H	24.4	25.6	25.1	26.2	27.0	20.7	21.8	21.3	22.5	23.2
4H	26.0	27.1	26.7	27.8	28.6	21.2	22.3	21.9	23.0	23.8
6H	27.8	28.8	28.5	29.5	30.3	21.6	22.6	22.2	23.3	24.1
8H	28.8	29.8	29.5	30.5	31.3	21.7	22.7	22.3	23.4	24.2
12H	29.9	30.9	30.6	31.6	32.4	21.7	22.7	22.4	23.4	24.2
4H 2H	22.2	23.3	22.8	24.0	24.7	20.5	21.6	21.1	22.3	23.0
3H	25.2	26.2	25.9	26.9	27.7	22.3	23.2	23.0	23.9	24.8
4H	27.0	27.9	27.7	28.6	29.5	23.1	24.0	23.8	24.7	25.5
6H	29.0	29.8	29.7	30.5	31.4	23.7	24.5	24.4	25.2	26.1
8H	30.1	30.9	30.9	31.6	32.5	23.9	24.6	24.7	25.4	26.3
12H	31.4	32.1	32.2	32.9	33.8	24.0	24.7	24.8	25.5	26.4
8H 4H	27.4	28.1	28.1	28.9	29.8	24.3	25.1	25.1	25.8	26.7
6H	29.7	30.3	30.5	31.1	32.0	25.4	26.0	26.2	26.8	27.8
8H	31.0	31.6	31.8	32.4	33.3	25.9	26.5	26.7	27.3	28.2
12H	32.5	33.0	33.4	33.9	34.8	26.3	26.8	27.1	27.6	28.6
12H 4H	27.4	28.1	28.2	28.8	29.8	24.7	25.4	25.5	26.2	27.1
6H	29.8	30.4	30.6	31.2	32.1	26.1	26.7	26.9	27.5	28.4
8H	31.2	31.7	32.1	32.6	33.5	26.8	27.3	27.6	28.1	29.1
Variations with the observer position at spacings:										
S = 1.0H	+ 0.1 / - 0.1					+ 0.1 / - 0.1				
1.5H	+ 0.2 / - 0.3					+ 0.2 / - 0.3				
2.0H	+ 0.3 / - 0.3					+ 0.3 / - 0.4				

CIE Pub.117, 51.89 lm Total Lamp Luminous Flux Correct (8log(F/F0) = -10.3)

C Range: 0 - 360DEG
C Interval: 30.0DEG
Test Speed: HIGH
Temperature:25.3DEG
Operators:LPC
Test Date:2021-11-30

γ Range: 0 - 180DEG
γ Interval: 1.0DEG
Test System:EVERFINE GO-2000B_V1 SYSTEM V2.0.362
Humidity:65.0%
Test Distance:9.200m [K=1.0000]
Remarks:

UTILIZATION FACTORS TABLE

Test:U:24.00V I:0.2234A P:5.362W PF:1.000 Freq:0Hz Lamp Flux:51.8913x1 lm		
NAME: SF21-24V-3528-72-R	TYPE: 硅胶	WEIGHT:
SPEC.:	DIM.: 28mm*11.5mm	SERIAL No.:2021113002
MFR.: OLYMPIA	SUR.:1*0.016	Shielding Angle:

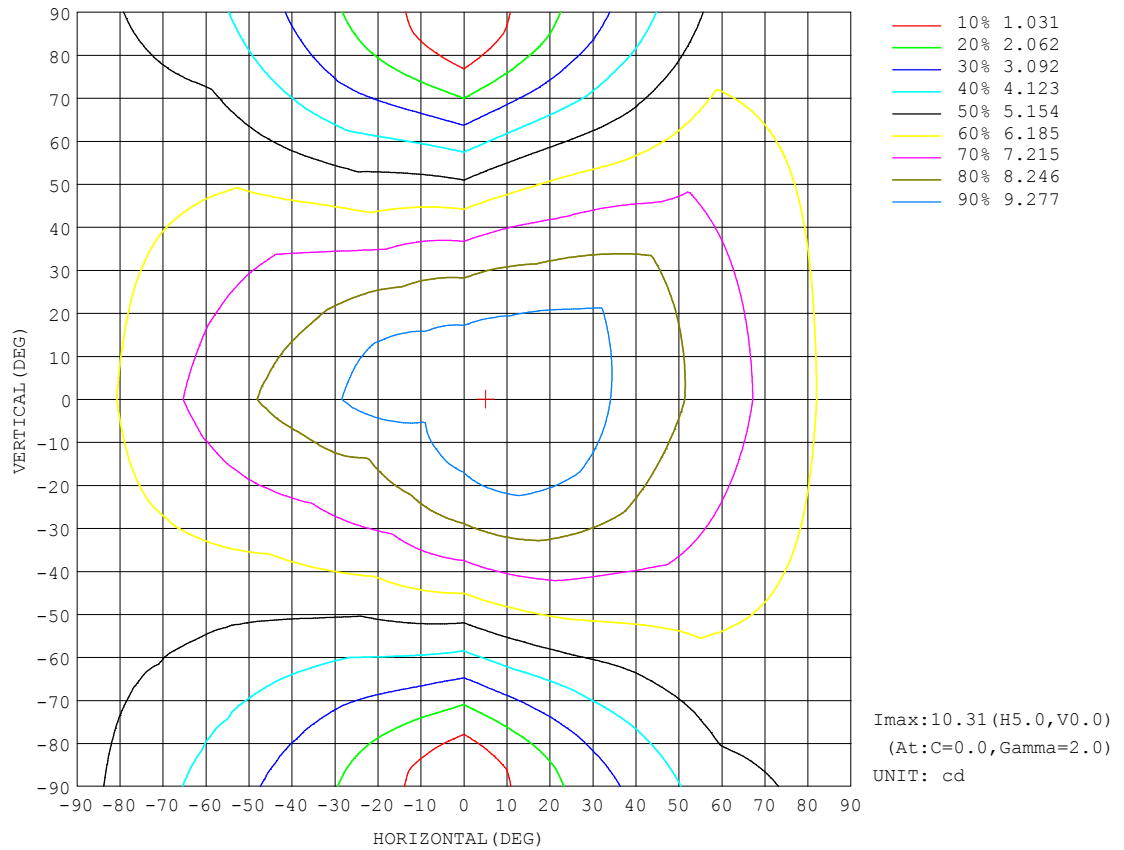
REFLECTANCE										
Ceiling	0.8	0.8	0.8	0.7	0.7	0.7	0.5	0.5	0.5	0
Walls	0.7	0.5	0.3	0.7	0.5	0.3	0.7	0.5	0.3	0
Working plane	0.2	0.2	0.2	0.2	0.2	0.2	0.2	0.2	0.2	0
ROOM INDEX	UTILIZATION FACTORS (PERCENT) $k(RI) \times RCR = 5$									
$k = 0.60$	45	33	26	44	33	26	42	31	25	18
0.80	55	41	33	53	41	33	49	39	32	23
1.00	62	49	41	60	48	40	56	47	38	29
1.25	69	56	48	66	54	46	61	51	44	34
1.50	74	62	53	71	60	52	65	56	49	37
2.00	81	70	62	78	67	60	71	63	56	43
2.50	86	76	67	82	73	65	75	67	61	46
3.00	90	80	73	85	77	70	78	71	65	50
4.00	95	86	80	90	83	77	81	76	71	54
5.00	98	90	84	93	86	81	84	79	74	57
ROOM INDEX	UF (total)									Direct
According to DIN EN 13032-2 2004			Suspended					SHRNOM = 1.25		

C Range: 0 - 360DEG
C Interval: 30.0DEG
Test Speed: HIGH
Temperature:25.3DEG
Operators:LPC
Test Date:2021-11-30

γ Range: 0 - 180DEG
 γ Interval: 1.0DEG
Test System:EVERFINE GO-2000B_V1 SYSTEM V2.0.362
Humidity:65.0%
Test Distance:9.200m [K=1.0000]
Remarks:

ISOCANDELA DIAGRAM

Test:U:24.00V I:0.2234A P:5.362W PF:1.000 Freq:0Hz Lamp Flux:51.8913x1 lm		
NAME: SF21-24V-3528-72-R	TYPE: 硅胶	WEIGHT:
SPEC.:	DIM.: 28mm*11.5mm	SERIAL No.:2021113002
MFR.: OLYMPIA	SUR.:1*0.016	Shielding Angle:

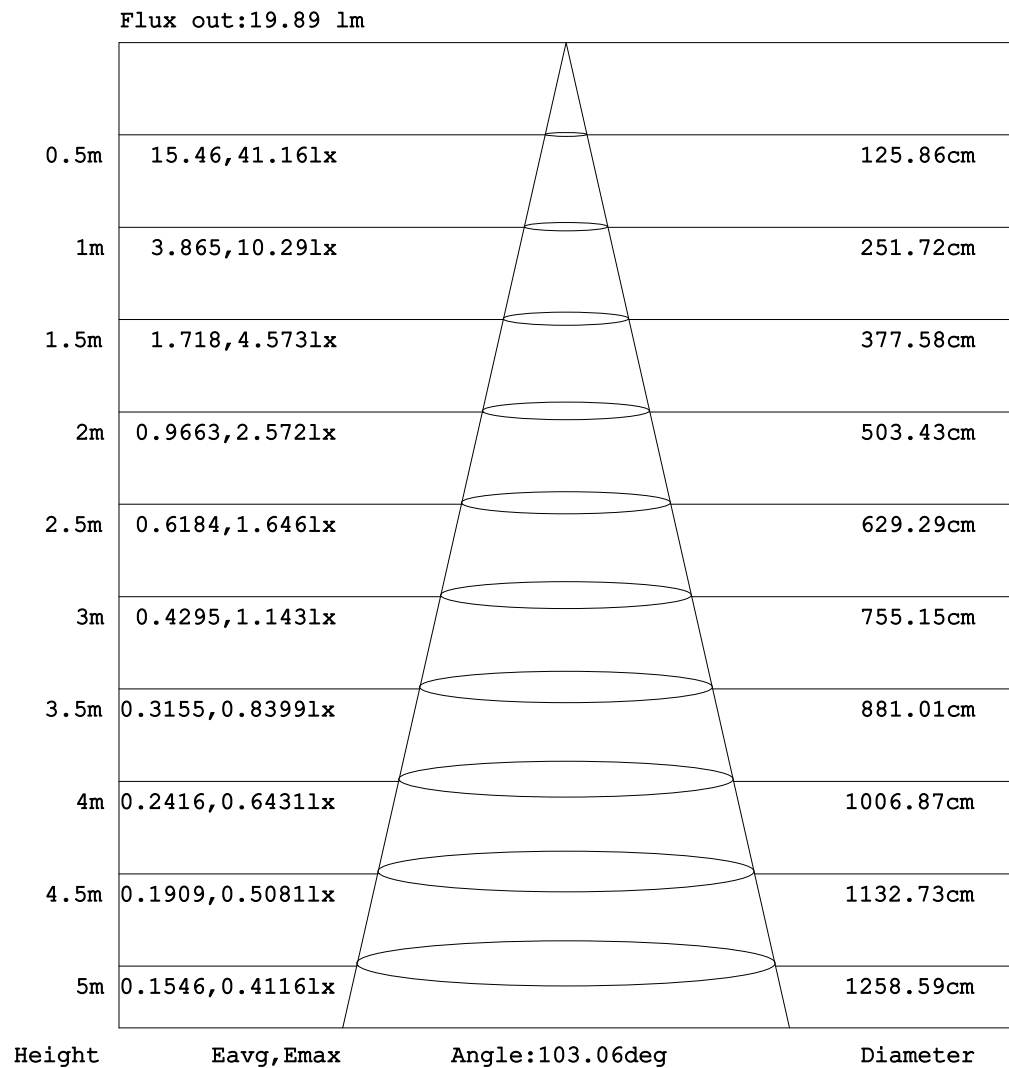


C Range: 0 - 360DEG
C Interval: 30.0DEG
Test Speed: HIGH
Temperature:25.3DEG
Operators:LPC
Test Date:2021-11-30

γ Range: 0 - 180DEG
 γ Interval: 1.0DEG
Test System:EVERFINE GO-2000B_V1 SYSTEM V2.0.362
Humidity:65.0%
Test Distance:9.200m [K=1.0000]
Remarks:

AAI Figure

Test:U:24.00V I:0.2234A P:5.362W PF:1.000 Freq:0Hz Lamp Flux:51.8913x1 lm		
NAME: SF21-24V-3528-72-R	TYPE: 硅胶	WEIGHT:
SPEC.:	DIM.: 28mm*11.5mm	SERIAL No.:2021113002
MFR.: OLYMPIA	SUR.:1*0.016	Shielding Angle:



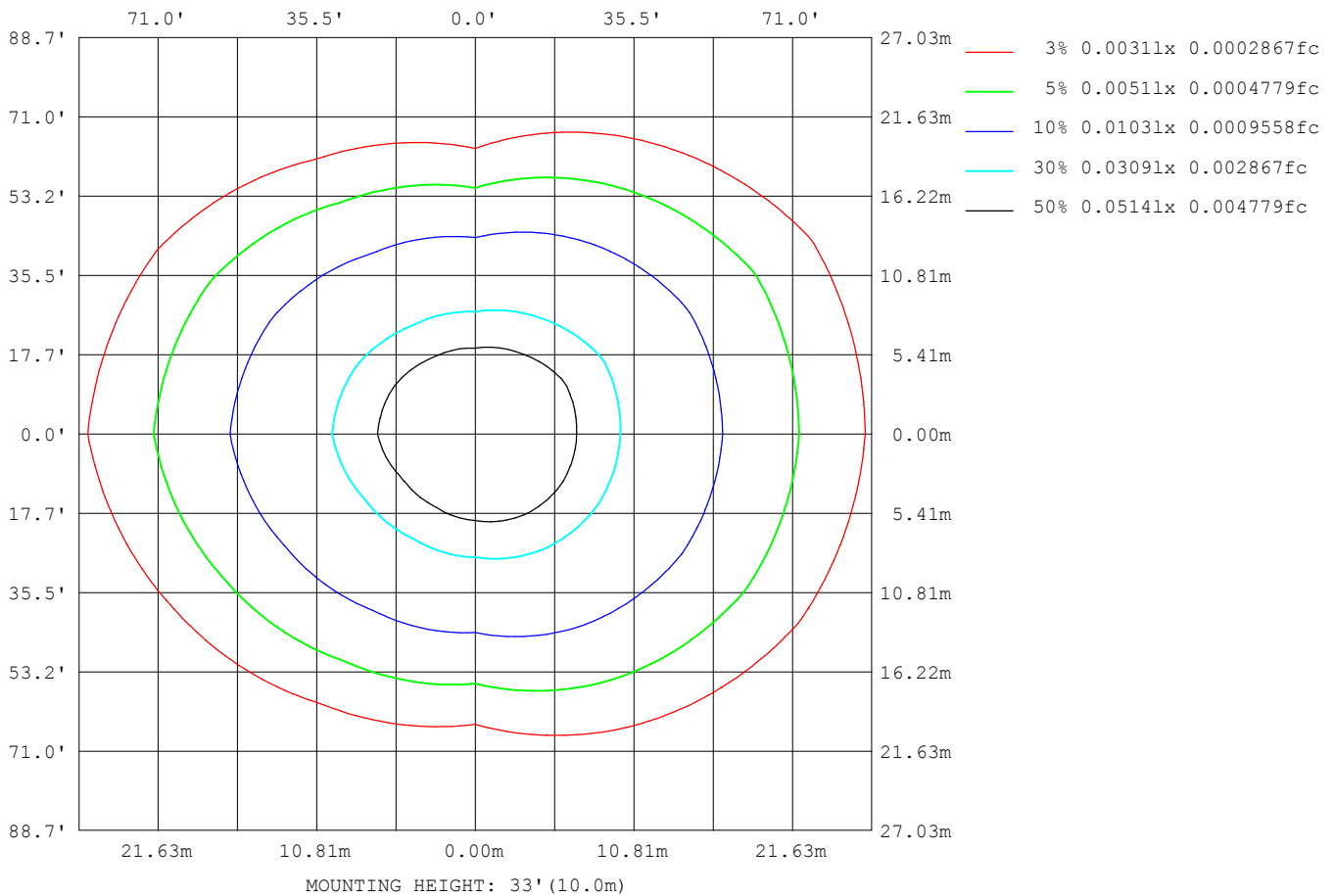
Note: The Curves indicate the illuminated area and the average illumination when the luminaire is at different distance.

C Range: 0 - 360DEG
 C Interval: 30.0DEG
 Test Speed: HIGH
 Temperature: 25.3DEG
 Operators: LPC
 Test Date: 2021-11-30

γ Range: 0 - 180DEG
 γ Interval: 1.0DEG
 Test System: EVERFINE GO-2000B_V1 SYSTEM V2.0.362
 Humidity: 65.0%
 Test Distance: 9.200m [K=1.0000]
 Remarks:

ISOLUX DIAGRAM

Test:U:24.00V I:0.2234A P:5.362W PF:1.000 Freq:0Hz Lamp Flux:51.8913x1 lm		
NAME: SF21-24V-3528-72-R	TYPE: 硅胶	WEIGHT:
SPEC.:	DIM.: 28mm*11.5mm	SERIAL No.:2021113002
MFR.: OLYMPIA	SUR.:1*0.016	Shielding Angle:



C Range: 0 - 360DEG
C Interval: 30.0DEG
Test Speed: HIGH
Temperature:25.3DEG
Operators:LPC
Test Date:2021-11-30

γ Range: 0 - 180DEG
 γ Interval: 1.0DEG
Test System:EVERFINE GO-2000B_V1 SYSTEM V2.0.362
Humidity:65.0%
Test Distance:9.200m [K=1.0000]
Remarks:

LED Avg.L Report

Test:U:24.00V I:0.2234A P:5.362W PF:1.000 Freq:0Hz Lamp Flux:51.8913x1 lm		
NAME: SF21-24V-3528-72-R	TYPE:硅胶	WEIGHT:
SPEC.:	DIM.: 28mm*11.5mm	SERIAL No.:2021113002
MFR.: OLYMPIA	SUR.:1*0.016	Shielding Angle:

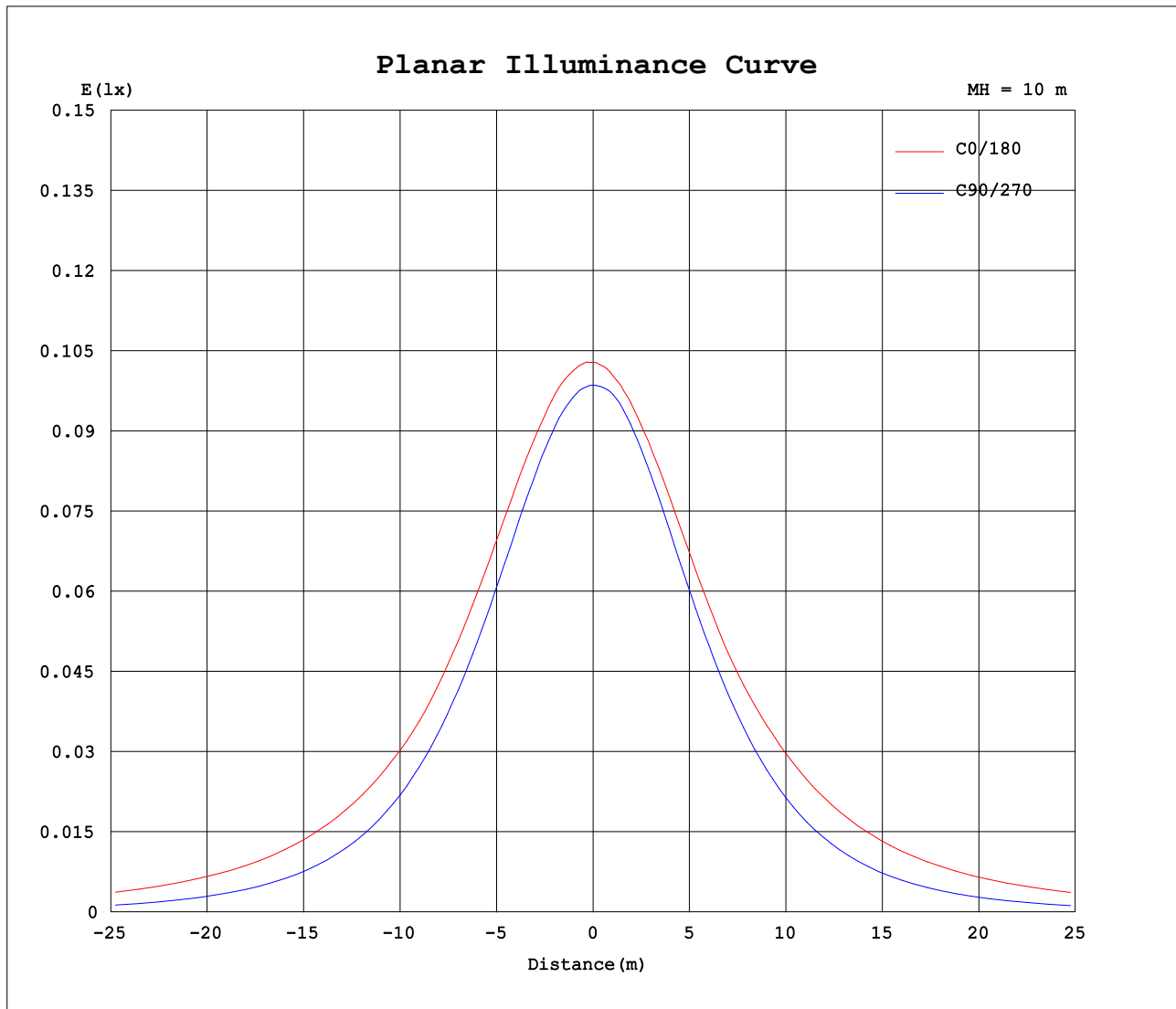
AvgL	cd/m2
L_0~180 (65) av	1079
L_0~180 (75) av	1604
L_0~180 (85) av	4240
L_90~270 (65) av	438
L_90~270 (75) av	330
L_90~270 (85) av	135
L_45 (65) av	817
L_45 (75) av	1126
L_45 (85) av	2823

Standard: GB/T 29293-2012

C Range: 0 - 360DEG
C Interval: 30.0DEG
Test Speed: HIGH
Temperature:25.3DEG
Operators:LPC
Test Date:2021-11-30

γ Range: 0 - 180DEG
γ Interval: 1.0DEG
Test System:EVERFINE GO-2000B_V1 SYSTEM V2.0.362
Humidity:65.0%
Test Distance:9.200m [K=1.0000]
Remarks:

Planar Illuminance Curve



C Range: 0 - 360DEG
C Interval: 30.0DEG
Test Speed: HIGH
Temperature: 25.3DEG
Operators: LPC
Test Date: 2021-11-30

γ Range: 0 - 180DEG
 γ Interval: 1.0DEG
Test System: EVERFINE GO-2000B_V1 SYSTEM V2.0.362
Humidity: 65.0%
Test Distance: 9.200m [K=1.0000]
Remarks:

LUMINOUS DISTRIBUTION INTENSITY DATA

Test:U:24.00V I:0.2234A P:5.362W PF:1.000 Freq:0Hz Lamp Flux:51.8913x1 lm		
NAME: SF21-24V-3528-72-R	TYPE: 硅胶	WEIGHT:
SPEC.:	DIM.: 28mm*11.5mm	SERIAL No.:2021113002
MFR.: OLYMPIA	SUR.:1*0.016	Shielding Angle:

Table--1

UNIT: cd

C (DEG) γ (DEG)	0	30	60	90	120	150	180	210	240	270	300	330						
0	10.3	10.3	10.1	9.86	9.82	9.76	10.3	10.3	10.1	9.86	9.82	9.76						
5	10.3	10.2	10.1	9.81	9.67	9.57	10.2	10.2	9.97	9.86	9.81	9.88						
10	10.3	10.2	10.1	9.67	9.45	9.31	10.1	10.0	9.79	9.70	9.78	9.96						
15	10.2	10.1	9.91	9.43	9.15	8.99	9.94	9.84	9.49	9.42	9.64	9.97						
20	10.0	9.91	9.65	9.08	8.74	8.63	9.75	9.58	9.13	9.04	9.40	9.95						
25	9.80	9.69	9.31	8.65	8.27	8.29	9.49	9.25	8.69	8.57	9.09	9.81						
30	9.53	9.38	8.90	8.13	7.77	8.02	9.19	8.86	8.20	8.03	8.71	9.62						
35	9.21	9.03	8.42	7.54	7.22	7.71	8.83	8.44	7.65	7.43	8.27	9.41						
40	8.85	8.63	7.90	6.89	6.74	7.36	8.60	8.08	7.07	6.77	7.81	9.17						
45	8.57	8.20	7.36	6.21	6.22	6.99	8.40	7.79	6.48	6.06	7.32	8.85						
50	8.32	7.76	6.79	5.46	5.67	6.61	8.15	7.44	5.90	5.30	6.80	8.47						
55	8.04	7.43	6.19	4.69	5.09	6.22	7.86	7.07	5.36	4.50	6.29	8.06						
60	7.70	7.06	5.56	3.88	4.51	5.83	7.56	6.69	4.77	3.70	5.70	7.62						
65	7.36	6.67	4.92	3.05	3.95	5.46	7.24	6.30	4.20	2.87	5.09	7.27						
70	7.03	6.27	4.31	2.23	3.44	5.09	6.92	5.94	3.65	2.05	4.47	6.95						
75	6.69	5.90	3.80	1.44	2.99	4.74	6.59	5.58	3.17	1.29	3.93	6.59						
80	6.33	5.53	3.31	0.75	2.61	4.41	6.24	5.22	2.75	0.62	3.47	6.24						
85	5.96	5.17	2.92	0.23	2.31	4.09	5.87	4.86	2.42	0.15	3.03	5.90						
90	5.58	4.82	2.63	0.15	2.10	3.81	5.50	4.54	2.18	0.09	2.72	5.56						
95	5.23	4.50	2.42	0.13	1.94	3.56	5.17	4.21	1.98	0.08	2.50	5.24						
100	4.90	4.03	2.29	0.14	1.85	3.09	4.82	3.68	1.90	0.08	2.37	4.70						
105	4.48	3.73	2.10	0.16	1.60	2.99	4.41	3.52	1.71	0.12	2.13	4.37						
110	4.19	3.52	1.83	0.16	1.37	2.84	4.14	3.38	1.53	0.14	2.07	4.18						
115	3.94	3.36	1.77	0.20	1.29	2.57	3.89	3.18	1.46	0.14	2.07	3.87						
120	3.70	3.22	1.79	0.26	1.25	2.33	3.51	2.94	1.45	0.20	1.96	3.48						
125	3.49	3.08	1.62	0.31	1.18	2.19	3.29	2.74	1.44	0.21	1.86	3.45						
130	3.28	2.92	1.55	0.38	1.09	2.05	3.07	2.52	1.41	0.22	1.75	3.27						
135	3.08	2.51	1.49	0.44	0.98	1.85	2.88	2.43	1.33	0.25	1.66	2.95						
140	2.86	2.12	1.35	0.48	0.85	1.63	2.67	2.28	1.23	0.28	1.52	2.46						
145	2.65	1.79	1.26	0.53	0.80	1.40	2.44	2.09	1.11	0.30	1.40	2.16						
150	2.43	1.35	1.16	0.58	0.75	1.16	2.23	1.87	1.01	0.31	1.28	1.91						
155	2.20	1.08	1.15	0.60	0.71	0.93	1.98	1.64	0.88	0.42	1.29	1.69						
160	1.88	0.85	1.16	0.61	0.82	0.83	1.70	1.45	0.81	0.52	1.36	1.45						
165	1.48	0.68	1.17	0.61	0.24	0.79	1.45	1.22	0.48	0.61	1.37	1.23						
170	0.66	0.68	1.17	0.61	0.23	0.79	0.55	0.96	0.26	0.69	1.35	1.25						
175	0.46	0.68	1.11	0.61	0.22	0.38	0.44	0.56	0.22	0.75	1.32	1.25						
180	0.22	0.22	0.44	0.60	0.86	0.71	0.23	0.23	0.21	0.79	0.80	0.72						

C Range: 0 - 360DEG
C Interval: 30.0DEG
Test Speed: HIGH
Temperature:25.3DEG
Operators:LPC
Test Date:2021-11-30

γ Range: 0 - 180DEG
γ Interval: 1.0DEG
Test System:EVERFINE GO-2000B_V1 SYSTEM V2.0.362
Humidity:65.0%
Test Distance:9.200m [K=1.0000]
Remarks:

Photometric Data Table [cd]

G/C	0.0	30.0	60.0	90.0	120.0	150.0	180.0	210.0	240.0	270.0
0.0	10.29	10.25	10.09	9.860	9.815	9.765	10.29	10.25	10.09	9.860
3.0	10.30	10.25	10.09	9.840	9.735	9.644	10.26	10.25	10.02	9.855
6.0	10.29	10.24	10.09	9.785	9.630	9.518	10.20	10.18	9.935	9.841
9.0	10.28	10.21	10.08	9.704	9.504	9.368	10.13	10.09	9.845	9.745
12.0	10.23	10.16	10.03	9.569	9.343	9.187	10.04	9.966	9.674	9.595
15.0	10.16	10.09	9.906	9.433	9.148	8.990	9.941	9.836	9.493	9.419
18.0	10.08	9.986	9.761	9.222	8.917	8.769	9.835	9.690	9.277	9.208
21.0	9.976	9.860	9.585	9.000	8.655	8.548	9.699	9.514	9.040	8.957
24.0	9.846	9.729	9.379	8.734	8.369	8.342	9.543	9.313	8.789	8.670
27.0	9.690	9.564	9.158	8.442	8.078	8.181	9.362	9.092	8.497	8.369
30.0	9.529	9.378	8.902	8.131	7.766	8.021	9.186	8.856	8.196	8.032
33.0	9.339	9.187	8.620	7.779	7.439	7.835	8.970	8.605	7.879	7.680
36.0	9.148	8.955	8.319	7.422	7.123	7.639	8.774	8.353	7.542	7.298
39.0	8.927	8.714	8.007	7.025	6.826	7.432	8.629	8.137	7.190	6.902
42.0	8.710	8.468	7.686	6.633	6.530	7.211	8.528	7.966	6.829	6.495
45.0	8.569	8.196	7.359	6.206	6.218	6.985	8.402	7.785	6.477	6.057
48.0	8.434	7.915	7.022	5.763	5.886	6.759	8.252	7.584	6.125	5.605
51.0	8.268	7.694	6.686	5.306	5.550	6.538	8.096	7.368	5.803	5.143
54.0	8.092	7.508	6.319	4.834	5.203	6.297	7.920	7.142	5.467	4.670
57.0	7.906	7.277	5.947	4.356	4.851	6.070	7.749	6.911	5.120	4.188
60.0	7.700	7.060	5.565	3.883	4.509	5.834	7.558	6.690	4.773	3.700
63.0	7.489	6.819	5.178	3.406	4.178	5.608	7.362	6.459	4.426	3.203
66.0	7.298	6.588	4.791	2.879	3.846	5.377	7.171	6.228	4.085	2.710
69.0	7.097	6.347	4.424	2.401	3.544	5.156	6.980	6.011	3.758	2.218
72.0	6.896	6.116	4.112	1.913	3.253	4.940	6.779	5.795	3.441	1.745
75.0	6.695	5.905	3.801	1.441	2.991	4.744	6.593	5.579	3.165	1.293
78.0	6.474	5.673	3.504	1.019	2.755	4.538	6.387	5.358	2.909	0.8656
81.0	6.258	5.467	3.227	0.6172	2.549	4.377	6.166	5.142	2.673	0.5085
84.0	6.032	5.251	2.986	0.3108	2.368	4.156	5.945	4.931	2.477	0.2269
87.0	5.806	5.025	2.790	0.1954	2.217	3.980	5.724	4.730	2.311	0.0956
90.0	5.584	4.819	2.629	0.1505	2.101	3.814	5.503	4.539	2.181	0.0854
93.0	5.373	4.613	2.488	0.1399	1.995	3.648	5.301	4.348	2.045	0.0804
96.0	5.167	4.447	2.383	0.1292	1.925	3.513	5.090	4.157	1.960	0.0804
99.0	4.961	4.250	2.312	0.1307	1.860	3.320	4.884	3.896	1.910	0.0804
102.0	4.665	3.819	2.267	0.1558	1.825	3.035	4.603	3.594	1.884	0.0804
105.0	4.479	3.729	2.097	0.1575	1.600	2.995	4.412	3.518	1.712	0.1206
108.0	4.303	3.613	1.955	0.1592	1.408	2.895	4.246	3.428	1.568	0.1331
111.0	4.142	3.488	1.814	0.1609	1.349	2.804	4.091	3.342	1.523	0.1369
114.0	3.986	3.402	1.781	0.1910	1.294	2.693	3.945	3.232	1.472	0.1406
117.0	3.845	3.312	1.764	0.2213	1.273	2.462	3.808	3.076	1.457	0.1557
120.0	3.704	3.216	1.789	0.2564	1.252	2.332	3.513	2.940	1.450	0.2009
123.0	3.574	3.136	1.659	0.2966	1.211	2.251	3.392	2.815	1.442	0.2075
126.0	3.453	3.040	1.613	0.3318	1.161	2.125	3.251	2.674	1.435	0.2096
129.0	3.323	2.950	1.558	0.3570	1.101	2.070	3.125	2.482	1.427	0.2165
132.0	3.197	2.764	1.523	0.4021	1.026	1.970	2.835	2.508	1.407	0.2311
135.0	3.076	2.507	1.488	0.4373	0.9752	1.849	2.879	2.428	1.332	0.2462
138.0	2.946	2.281	1.407	0.4574	0.9099	1.713	2.748	2.337	1.266	0.2663
141.0	2.820	2.010	1.327	0.4976	0.8296	1.583	2.607	2.252	1.191	0.2827
144.0	2.689	1.864	1.277	0.5177	0.8042	1.447	2.288	2.126	1.116	0.2923
147.0	2.564	1.622	1.216	0.5479	0.7891	1.296	2.372	1.991	1.075	0.3019
150.0	2.433	1.346	1.156	0.5831	0.7540	1.156	2.226	1.870	1.010	0.3114
153.0	2.297	1.151	1.144	0.6036	0.7088	1.010	2.080	1.754	0.9244	0.3667
156.0	2.147	1.045	1.154	0.6053	0.7186	0.8943	1.919	1.579	0.8543	0.4371
159.0	1.946	0.9092	1.160	0.6070	0.7888	0.8393	1.753	1.493	0.8340	0.4973
162.0	1.725	0.7533	1.165	0.6072	0.6308	0.7738	1.542	1.377	0.7639	0.5427
165.0	1.483	0.6835	1.169	0.6074	0.2365	0.7943	1.447	1.222	0.4764	0.6081
168.0	0.7437	0.6835	1.173	0.6076	0.2331	0.8745	1.195	1.056	0.2710	0.6781
171.0	0.6286	0.6835	1.163	0.6077	0.2296	0.7072	0.5174	0.9051	0.2510	0.6963
174.0	0.5082	0.6835	1.146	0.6079	0.2262	0.4617	0.4522	0.6743	0.2310	0.7186
177.0	0.3574	0.6017	0.9911	0.6081	0.2211	0.2161	0.3561	0.3577	0.2111	0.7639
180.0	0.2211	0.2211	0.4372	0.6031	0.8644	0.7086	0.2262	0.2262	0.2111	0.7890
G/C	300.0	330.0								
0.0	9.815	9.765								
3.0	9.810	9.845								
6.0	9.807	9.910								
9.0	9.800	9.946								
12.0	9.740	9.971								
15.0	9.639	9.971								
18.0	9.518	9.964								
21.0	9.352	9.911								
24.0	9.156	9.831								
27.0	8.945	9.740								
30.0	8.709	9.620								

C Range: 0 - 360DEG
 C Interval: 30.0DEG
 Test Speed: HIGH
 Temperature: 25.3DEG
 Operators: LPC
 Test Date: 2021-11-30

γ Range: 0 - 180DEG
 γ Interval: 1.0DEG
 Test System: EVERFINE GO-2000B_V1 SYSTEM V2.0.362
 Humidity: 65.0%
 Test Distance: 9.200m [K=1.0000]
 Remarks:

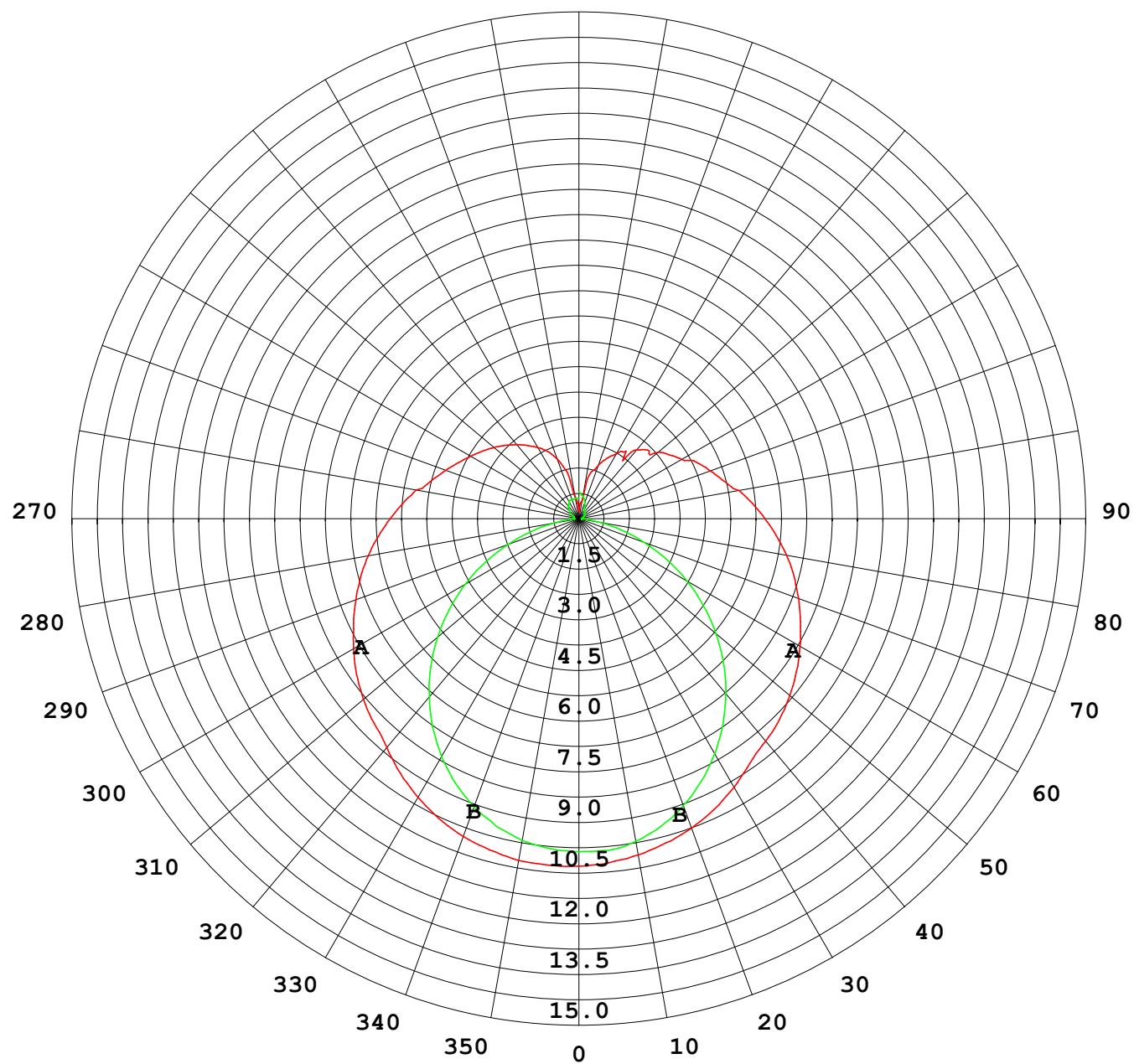
Photometric Data Table [cd]

33.0	8.447	9.494
36.0	8.181	9.363
39.0	7.904	9.223
42.0	7.618	9.042
45.0	7.321	8.846
48.0	6.995	8.625
51.0	6.703	8.394
54.0	6.397	8.147
57.0	6.055	7.891
60.0	5.698	7.620
63.0	5.331	7.399
66.0	4.964	7.212
69.0	4.597	7.016
72.0	4.225	6.815
75.0	3.929	6.595
78.0	3.658	6.388
81.0	3.366	6.172
84.0	3.105	5.966
87.0	2.894	5.760
90.0	2.723	5.564
93.0	2.593	5.368
96.0	2.467	5.182
99.0	2.377	4.986
102.0	2.281	4.463
105.0	2.131	4.368
108.0	2.102	4.257
111.0	2.060	4.137
114.0	2.021	3.931
117.0	2.040	3.720
120.0	1.965	3.483
123.0	1.890	3.465
126.0	1.829	3.413
129.0	1.779	3.302
132.0	1.729	3.157
135.0	1.658	2.951
138.0	1.598	2.719
141.0	1.507	2.308
144.0	1.412	2.202
147.0	1.347	2.041
150.0	1.276	1.910
153.0	1.267	1.795
156.0	1.317	1.639
159.0	1.355	1.503
162.0	1.365	1.337
165.0	1.374	1.231
168.0	1.362	1.201
171.0	1.342	1.251
174.0	1.327	1.254
177.0	1.291	1.256
180.0	0.8041	0.7187

C Range: 0 - 360DEG
C Interval: 30.0DEG
Test Speed: HIGH
Temperature:25.3DEG
Operators:LPC
Test Date:2021-11-30

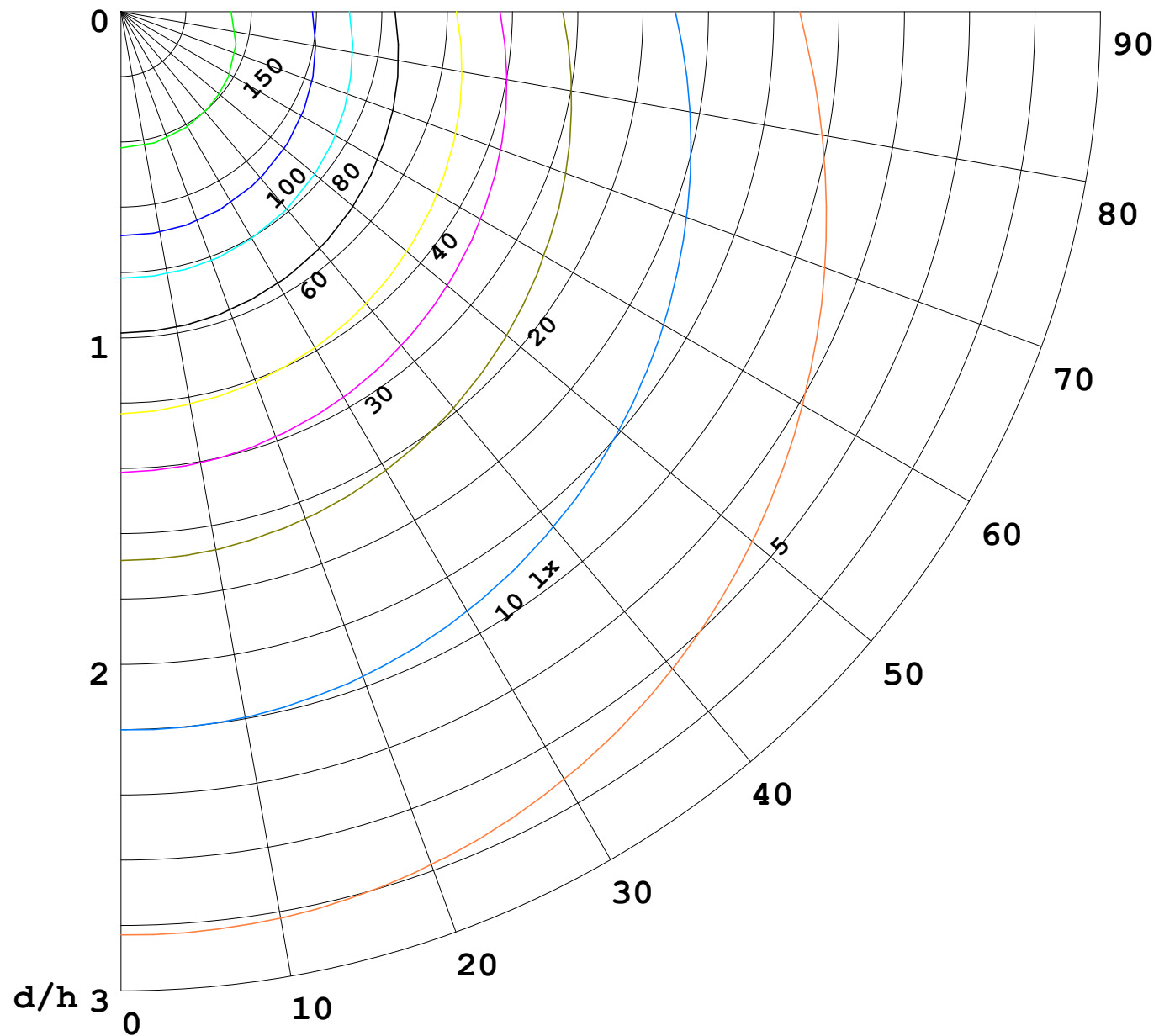
γ Range: 0 - 180DEG
γ Interval: 1.0DEG
Test System:EVERFINE GO-2000B_V1 SYSTEM V2.0.362
Humidity:65.0%
Test Distance:9.200m [K=1.0000]
Remarks:

I (cd)



1000 lm

$\kappa = 1$



F = 5000 lm
 K = 0.7
 Hcc = 0.0 m
 Hfc = 0.0 m
 Eave = 100 lx

	Pcc	Pw	Pfc
—	70	50	30
—	50	30	20

