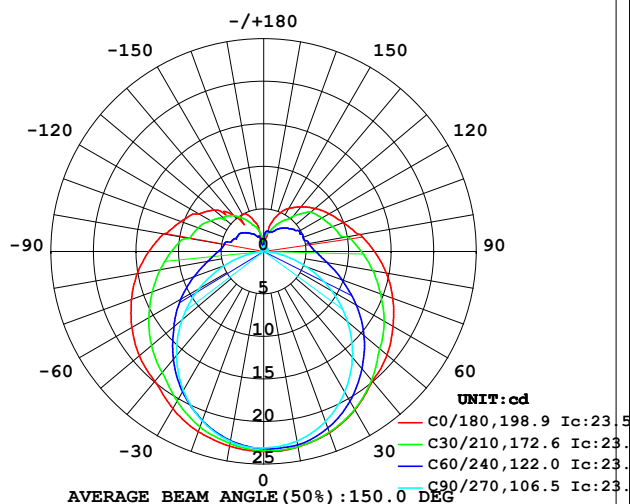


LUMINAIRE PHOTOMETRIC TEST REPORT

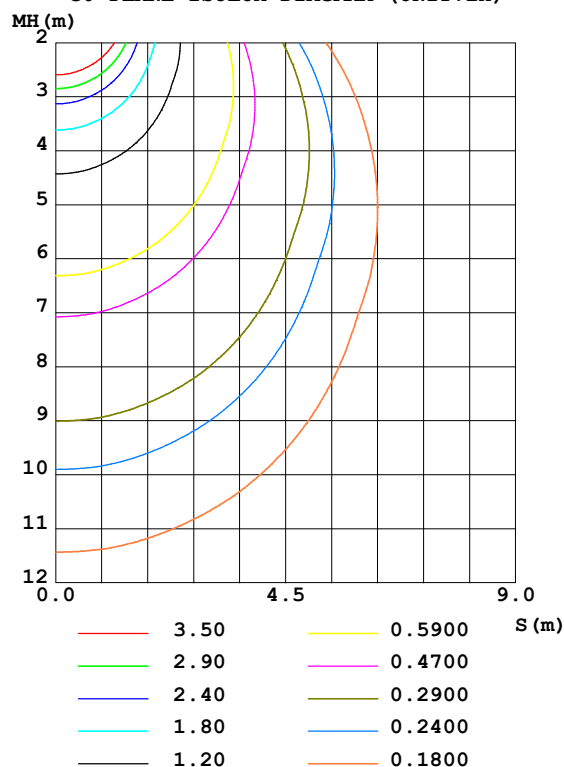
Test:U:24.00V I:0.2218A P:5.323W PF:1.000 Freq:0Hz Lamp Flux:122.579x1 lm		
NAME: SF21-24V-3528-72-G	TYPE: 硅胶	WEIGHT:
SPEC.:	DIM.: 28mm*11.5mm	SERIAL No.:2021113004
MFR.: OLYMPIA	SUR.:1*0.016	Shielding Angle:

DATA OF LAMP		PHOTOMETRIC DATA Eff: 23.03 lm/W			
MODEL	3528	I _{max} (cd)	23.53	S/MH (C0/180)	1.36
NOMINAL POWER (W)	5	LOR (%)	100.0	S/MH (C90/270)	1.22
RATED VOLTAGE (V)	24	TOTAL FLUX (lm)	122.58	η UP, DN (C0-180)	13.2, 36.3
NOMINAL FLUX (lm)	122.579	CIE CLASS	SEMI-D.	η UP, DN (C180-360)	13.6, 36.9
LAMPS INSIDE	1	η up (%)	26.8	CIBSE SHR NOM	1.50
TEST VOLTAGE (V)	24.0	η down (%)	73.2	CIBSE SHR MAX	1.55

LUMINOUS INTENSITY DISTRIBUTION DIAGRAM



C0 PLANE ISOLUX DIAGRAM (UNIT: lx)



C Range: 0 - 360DEG
 C Interval: 30.0DEG
 Test Speed: HIGH
 Temperature: 25.3DEG
 Operators: LPC
 Test Date: 2021-11-30

γ Range: 0 - 180DEG
 γ Interval: 1.0DEG
 Test System: EVERFINE GO-2000B_V1 SYSTEM V2.0.362
 Humidity: 65.0%
 Test Distance: 9.200m [K=1.0000]
 Remarks:

ZONAL FLUX DIAGRAM

ZONAL FLUX DIAGRAM:

γ	C0	C45	C90	C135	C180	C225	C270	C315	γ	Φ zone	Φ total	%lum, lamp
10	23.33	23.19	22.65	22.44	23.23	22.75	22.66	23.18	0- 10	2.203	2.203	1.8,1.8
20	22.67	22.34	21.26	21.10	22.54	21.54	21.17	22.44	10- 20	6.348	8.551	6.98,6.98
30	21.49	20.87	19.08	19.17	21.35	19.70	18.88	21.03	20- 30	9.731	18.28	14.9,14.9
40	19.88	18.85	16.23	17.21	19.92	17.56	15.96	19.21	30- 40	12.02	30.30	24.7,24.7
50	18.92	16.60	12.90	15.14	19.08	15.50	12.54	17.08	40- 50	13.21	43.52	35.5,35.5
60	17.55	14.45	9.224	13.00	17.90	13.43	8.818	14.91	50- 60	13.34	56.86	46.4,46.4
70	16.15	12.22	5.409	10.93	16.54	11.34	4.958	12.71	60- 70	12.49	69.34	56.6,56.6
80	14.65	10.30	1.872	9.152	15.10	9.506	1.560	10.80	70- 80	10.99	80.33	65.5,65.5
90	13.04	8.790	0.3467	7.805	13.50	8.109	0.2442	9.272	80- 90	9.361	89.69	73.2,73.2
100	11.54	7.652	0.3620	6.628	11.95	6.825	0.2733	7.996	90-100	8.108	97.80	79.8,79.8
110	9.967	6.776	0.4061	5.747	10.35	6.061	0.2873	7.167	100-110	6.760	104.6	85.3,85.3
120	8.887	6.377	0.4222	4.978	8.824	5.406	0.2956	6.428	110-120	5.701	110.3	90,90
130	7.892	5.689	0.4674	4.283	7.592	4.686	0.3566	5.880	120-130	4.579	114.8	93.7,93.7
140	6.856	4.525	0.5127	3.716	5.571	4.194	0.4120	4.507	130-140	3.413	118.3	96.5,96.5
150	5.836	3.488	0.5515	2.890	5.031	3.365	0.5175	3.659	140-150	2.230	120.5	98.3,98.3
160	4.389	2.610	0.5632	2.218	4.174	2.534	0.5261	3.084	150-160	1.346	121.8	99.4,99.4
170	1.674	2.273	0.5492	1.277	1.603	1.347	0.5649	2.719	160-170	0.6136	122.4	99.9,99.9
180	0.5579	0.5553	0.5327	0.5453	0.5729	0.5553	0.6081	0.5704	170-180	0.1339	122.6	100,100
DEG	LUMINOUS INTENSITY:cd									UNIT:lm		

Conical surface Flux(90deg): 36.828 lm

%lum = 30.0%

%lamp = 30.0%

Conical surface Flux(120deg): 56.857 lm

%lum = 46.4%

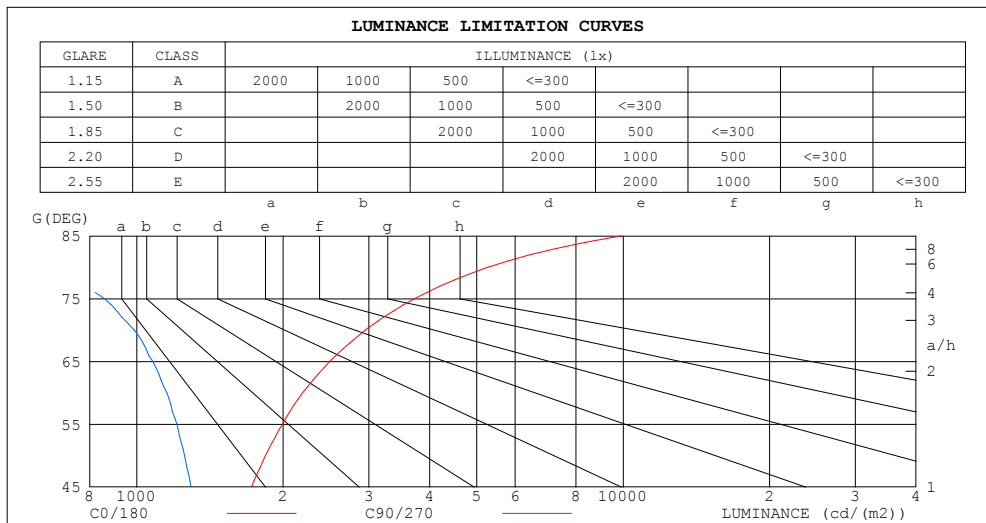
%lamp = 46.4%

C Range: 0 - 360DEG
 C Interval: 30.0DEG
 Test Speed: HIGH
 Temperature:25.3DEG
 Operators:LPC
 Test Date:2021-11-30

γ Range: 0 - 180DEG
 γ Interval: 1.0DEG
 Test System:EVERFINE GO-2000B_V1 SYSTEM V2.0.362
 Humidity:65.0%
 Test Distance:9.200m [K=1.0000]
 Remarks:

LUMINANCE LIMITATION CURVES

Test:U:24.00V I:0.2218A P:5.323W PF:1.000 Freq:0Hz Lamp Flux:122.579x1 lm		
NAME: SF21-24V-3528-72-G	TYPE: 硅胶	WEIGHT:
SPEC.:	DIM.: 28mm*11.5mm	SERIAL No.:2021113004
MFR.: OLYMPIA	SUR.:1*0.016	Shielding Angle:



LUMINANCE cd/(m2)		
G (DEG)	C0/180	C90/270
85	9916	467
80	5272	674
75	3724	859
70	2952	988
65	2495	1079
60	2194	1153
55	1992	1209
50	1839	1254
45	1721	1292

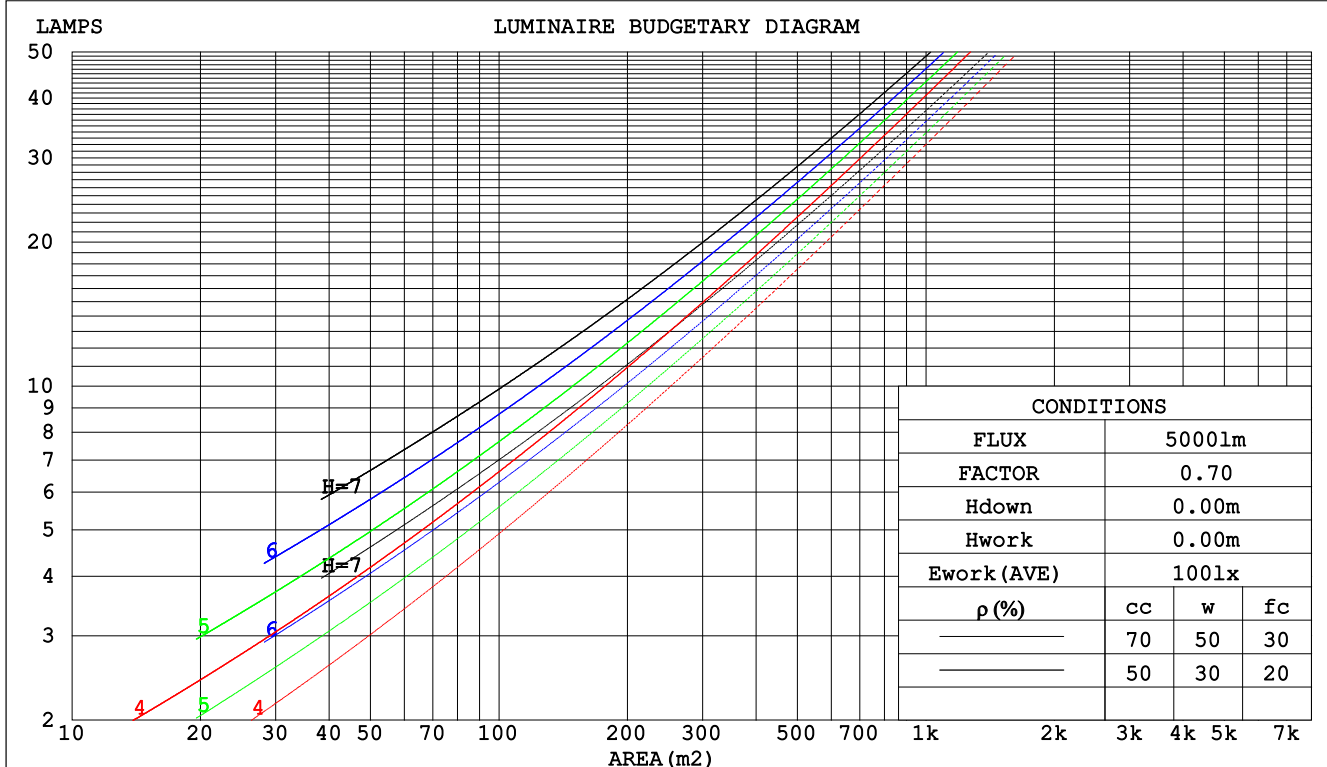
C Range: 0 - 360DEG
C Interval: 30.0DEG
Test Speed: HIGH
Temperature:25.3DEG
Operators:LPC
Test Date:2021-11-30

γ Range: 0 - 180DEG
 γ Interval: 1.0DEG
Test System:EVERFINE GO-2000B_V1 SYSTEM V2.0.362
Humidity:65.0%
Test Distance:9.200m [K=1.0000]
Remarks:

CU AND LUMINAIRE BUDGETARY ESTIMATE DIAGRAM

Test:U:24.00V I:0.2218A P:5.323W PF:1.000 Freq:0Hz Lamp Flux:122.579x1 lm		
NAME: SF21-24V-3528-72-G	TYPE: 硅胶	WEIGHT:
SPEC.:	DIM.: 28mm*11.5mm	SERIAL No.:2021113004
MFR.: OLYMPIA	SUR.:1*0.016	Shielding Angle:

pcc	80%			70%			50%			30%			10%			0
pw	50%	30%	10%	50%	30%	10%	50%	30%	10%	50%	30%	10%	50%	30%	10%	0
pfc	20%			20%			20%			20%			20%			0
RCR	RCR:Room Cavity Ratio						Coefficients of Utilization(CU)									
0.0	1.13	1.13	1.13	1.07	1.07	1.07	.96	.96	.96	.86	.86	.86	.77	.77	.77	.73
1.0	.94	.88	.83	.89	.84	.80	.79	.76	.72	.71	.68	.65	.63	.61	.59	.55
2.0	.80	.72	.66	.76	.69	.63	.68	.62	.57	.60	.56	.52	.54	.50	.47	.43
3.0	.69	.60	.53	.66	.58	.51	.59	.52	.47	.52	.47	.43	.47	.42	.39	.35
4.0	.61	.52	.44	.58	.49	.43	.52	.45	.39	.46	.40	.36	.41	.36	.33	.29
5.0	.54	.45	.38	.51	.43	.36	.46	.39	.33	.41	.35	.31	.37	.32	.28	.25
6.0	.48	.39	.32	.46	.37	.31	.41	.34	.29	.37	.31	.27	.33	.28	.24	.22
7.0	.44	.35	.28	.41	.33	.27	.37	.30	.25	.34	.28	.23	.30	.25	.21	.19
8.0	.40	.31	.25	.38	.30	.24	.34	.27	.22	.31	.25	.21	.28	.23	.19	.17
9.0	.36	.28	.22	.34	.27	.21	.31	.25	.20	.28	.23	.18	.26	.21	.17	.15
10.0	.33	.25	.20	.32	.24	.19	.29	.22	.18	.26	.21	.17	.24	.19	.15	.13



C Range: 0 - 360DEG
 C Interval: 30.0DEG
 Test Speed: HIGH
 Temperature:25.3DEG
 Operators:LPC
 Test Date:2021-11-30

γ Range: 0 - 180DEG
 γ Interval: 1.0DEG
 Test System:EVERFINE GO-2000B_V1 SYSTEM V2.0.362
 Humidity:65.0%
 Test Distance:9.200m [K=1.0000]
 Remarks:

WEC AND CCEC

Test:U:24.00V I:0.2218A P:5.323W PF:1.000 Freq:0Hz Lamp Flux:122.579x1 lm		
NAME: SF21-24V-3528-72-G	TYPE: 硅胶	WEIGHT:
SPEC.:	DIM.: 28mm*11.5mm	SERIAL No.:2021113004
MFR.: OLYMPIA	SUR.:1*0.016	Shielding Angle:

pcc	80%			70%			50%			30%			10%			0	
pw	50%	30%	10%	50%	30%	10%	50%	30%	10%	50%	30%	10%	50%	30%	10%	0	
pfc	20%			20%			20%			20%			20%			0	
RCR	RCR:Room Cavity Ratio						Wall Exitance Coefficients(WEC)										
0.0																	
1.0	.384	.218	.069	.369	.210	.067	.340	.195	.062	.313	.181	.058	.289	.167	.054		
2.0	.330	.181	.055	.316	.174	.054	.290	.161	.050	.266	.149	.047	.244	.138	.043		
3.0	.292	.156	.047	.280	.150	.045	.256	.139	.042	.234	.128	.039	.214	.118	.037		
4.0	.263	.137	.040	.251	.132	.039	.230	.122	.036	.210	.113	.034	.191	.104	.032		
5.0	.239	.122	.035	.228	.117	.034	.209	.109	.032	.190	.100	.030	.173	.092	.028		
6.0	.219	.110	.031	.209	.106	.030	.191	.098	.028	.174	.091	.027	.158	.083	.025		
7.0	.202	.100	.028	.193	.096	.027	.176	.089	.026	.161	.082	.024	.146	.076	.022		
8.0	.187	.091	.026	.179	.088	.025	.164	.082	.023	.149	.076	.022	.136	.070	.020		
9.0	.174	.084	.024	.167	.081	.023	.153	.075	.021	.139	.070	.020	.127	.064	.019		
10.0	.163	.078	.022	.156	.075	.021	.143	.070	.020	.131	.065	.018	.119	.060	.017		

pcc	80%			70%			50%			30%			10%			0
pw	50%	30%	10%	50%	30%	10%	50%	30%	10%	50%	30%	10%	50%	30%	10%	0
pfc	20%			20%			20%			20%			20%			0
RCR	RCR:Room Cavity Ratio						Ceiling Cavity Exitance Coefficients(CCEC)									
0.0	.395	.395	.395	.337	.337	.337	.230	.230	.230	.132	.132	.132	.042	.042	.042	
1.0	.392	.362	.335	.335	.310	.288	.229	.213	.199	.132	.124	.116	.042	.040	.037	
2.0	.385	.339	.301	.330	.292	.260	.226	.202	.181	.130	.118	.106	.042	.038	.035	
3.0	.377	.323	.280	.324	.279	.243	.222	.194	.170	.128	.113	.100	.041	.037	.033	
4.0	.370	.311	.266	.317	.269	.231	.218	.187	.163	.126	.110	.096	.041	.036	.032	
5.0	.362	.301	.256	.311	.261	.223	.214	.182	.157	.124	.107	.093	.040	.035	.031	
6.0	.355	.293	.249	.305	.254	.217	.210	.178	.154	.122	.105	.091	.039	.034	.030	
7.0	.348	.287	.244	.299	.249	.213	.207	.174	.151	.120	.103	.090	.039	.034	.030	
8.0	.341	.281	.240	.294	.244	.210	.203	.171	.149	.118	.101	.089	.038	.033	.029	
9.0	.335	.277	.237	.289	.240	.207	.200	.169	.147	.117	.100	.088	.038	.033	.029	
10.0	.329	.273	.235	.284	.237	.205	.197	.167	.146	.115	.098	.087	.037	.032	.029	

C Range: 0 - 360DEG
 C Interval: 30.0DEG
 Test Speed: HIGH
 Temperature:25.3DEG
 Operators:LPC
 Test Date:2021-11-30

γ Range: 0 - 180DEG
 γ Interval: 1.0DEG
 Test System:EVERFINE GO-2000B_V1 SYSTEM V2.0.362
 Humidity:65.0%
 Test Distance:9.200m [K=1.0000]
 Remarks:

UGR(Unified Glare Rating) Table

Test:U:24.00V I:0.2218A P:5.323W PF:1.000 Freq:0Hz Lamp Flux:122.579x1 lm										
NAME: SF21-24V-3528-72-G					TYPE: 硅胶			WEIGHT:		
SPEC.:					DIM.: 28mm*11.5mm			SERIAL No.:2021113004		
MFR.: OLYMPIA					SUR.:1*0.016			Shielding Angle:		
ceiling/cavity	0.7	0.7	0.5	0.5	0.3	0.7	0.7	0.5	0.5	0.3
walls	0.5	0.3	0.5	0.3	0.3	0.5	0.3	0.5	0.3	0.3
working plane	0.2	0.2	0.2	0.2	0.2	0.2	0.2	0.2	0.2	0.2
Room dimensions	Viewed crosswise					Viewed endwise				
x = 2H y = 2H	21.4	22.7	22.0	23.3	24.0	19.0	20.3	19.6	20.9	21.7
3H	24.2	25.4	24.9	26.1	26.8	20.5	21.7	21.1	22.3	23.1
4H	25.8	26.9	26.5	27.6	28.4	21.1	22.2	21.7	22.8	23.6
6H	27.6	28.7	28.3	29.4	30.2	21.4	22.5	22.1	23.2	24.0
8H	28.6	29.6	29.3	30.3	31.2	21.5	22.6	22.2	23.3	24.1
12H	29.8	30.7	30.5	31.4	32.3	21.6	22.6	22.3	23.3	24.1
4H 2H	22.0	23.1	22.6	23.7	24.5	20.3	21.4	20.9	22.1	22.8
3H	25.1	26.0	25.8	26.7	27.6	22.1	23.0	22.8	23.7	24.6
4H	26.9	27.7	27.6	28.5	29.4	22.9	23.8	23.6	24.5	25.4
6H	28.9	29.6	29.6	30.4	31.3	23.5	24.3	24.3	25.1	26.0
8H	30.0	30.7	30.7	31.5	32.4	23.7	24.5	24.5	25.2	26.2
12H	31.3	31.9	32.0	32.7	33.7	23.9	24.6	24.7	25.3	26.3
8H 4H	27.2	28.0	28.0	28.7	29.6	24.1	24.9	24.9	25.6	26.6
6H	29.5	30.2	30.3	31.0	31.9	25.2	25.9	26.0	26.7	27.6
8H	30.9	31.4	31.7	32.2	33.2	25.7	26.3	26.5	27.1	28.1
12H	32.4	32.9	33.2	33.7	34.7	26.1	26.6	26.9	27.4	28.4
12H 4H	27.2	27.9	28.0	28.7	29.6	24.6	25.3	25.4	26.0	27.0
6H	29.7	30.2	30.5	31.0	32.0	25.9	26.5	26.7	27.3	28.3
8H	31.1	31.6	31.9	32.4	33.4	26.6	27.1	27.5	28.0	29.0
Variations with the observer position at spacings:										
S = 1.0H	+ 0.1 / - 0.1					+ 0.1 / - 0.1				
1.5H	+ 0.2 / - 0.3					+ 0.2 / - 0.3				
2.0H	+ 0.3 / - 0.4					+ 0.3 / - 0.4				

CIE Pub.117, 122.6 lm Total Lamp Luminous Flux Correct (8log(F/F0) = -7.3)

C Range: 0 - 360DEG
C Interval: 30.0DEG
Test Speed: HIGH
Temperature:25.3DEG
Operators:LPC
Test Date:2021-11-30

γ Range: 0 - 180DEG
γ Interval: 1.0DEG
Test System:EVERFINE GO-2000B_V1 SYSTEM V2.0.362
Humidity:65.0%
Test Distance:9.200m [K=1.0000]
Remarks:

UTILIZATION FACTORS TABLE

Test:U:24.00V I:0.2218A P:5.323W PF:1.000 Freq:0Hz Lamp Flux:122.579x1 lm		
NAME: SF21-24V-3528-72-G	TYPE: 硅胶	WEIGHT:
SPEC.:	DIM.: 28mm*11.5mm	SERIAL No.:2021113004
MFR.: OLYMPIA	SUR.:1*0.016	Shielding Angle:

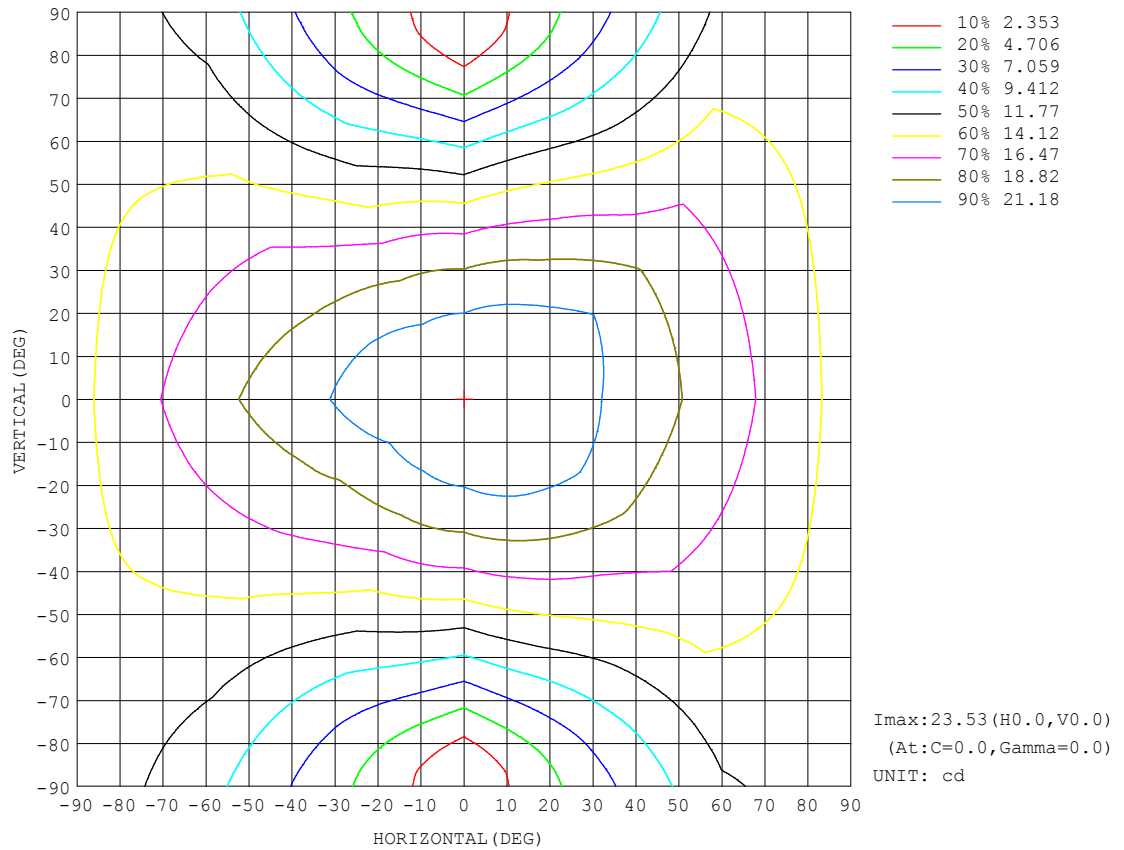
REFLECTANCE										
Ceiling	0.8	0.8	0.8	0.7	0.7	0.7	0.5	0.5	0.5	0
Walls	0.7	0.5	0.3	0.7	0.5	0.3	0.7	0.5	0.3	0
Working plane	0.2	0.2	0.2	0.2	0.2	0.2	0.2	0.2	0.2	0
ROOM INDEX	UTILIZATION FACTORS (PERCENT) $k(RI) \times RCR = 5$									
$k = 0.60$	45	33	26	44	32	25	41	31	25	18
0.80	54	41	33	52	40	33	49	38	31	23
1.00	62	49	40	59	47	39	55	47	38	28
1.25	69	56	47	66	54	46	61	51	44	33
1.50	74	61	53	71	59	51	65	55	48	37
2.00	81	70	61	77	67	59	71	62	56	42
2.50	86	75	67	82	72	65	74	66	60	46
3.00	89	80	72	85	77	70	77	70	65	49
4.00	94	86	79	90	82	76	81	75	70	53
5.00	97	90	84	92	86	81	83	78	74	56
ROOM INDEX	UF (total)									Direct
According to DIN EN 13032-2 2004			Suspended					SHRNOM = 1.25		

C Range: 0 - 360DEG
 C Interval: 30.0DEG
 Test Speed: HIGH
 Temperature: 25.3DEG
 Operators: LPC
 Test Date: 2021-11-30

γ Range: 0 - 180DEG
 γ Interval: 1.0DEG
 Test System: EVERFINE GO-2000B_V1 SYSTEM V2.0.362
 Humidity: 65.0%
 Test Distance: 9.200m [K=1.0000]
 Remarks:

ISOCANDELA DIAGRAM

Test:U:24.00V I:0.2218A P:5.323W PF:1.000 Freq:0Hz Lamp Flux:122.579x1 lm		
NAME: SF21-24V-3528-72-G	TYPE: 硅胶	WEIGHT:
SPEC.:	DIM.: 28mm*11.5mm	SERIAL No.:2021113004
MFR.: OLYMPIA	SUR.:1*0.016	Shielding Angle:

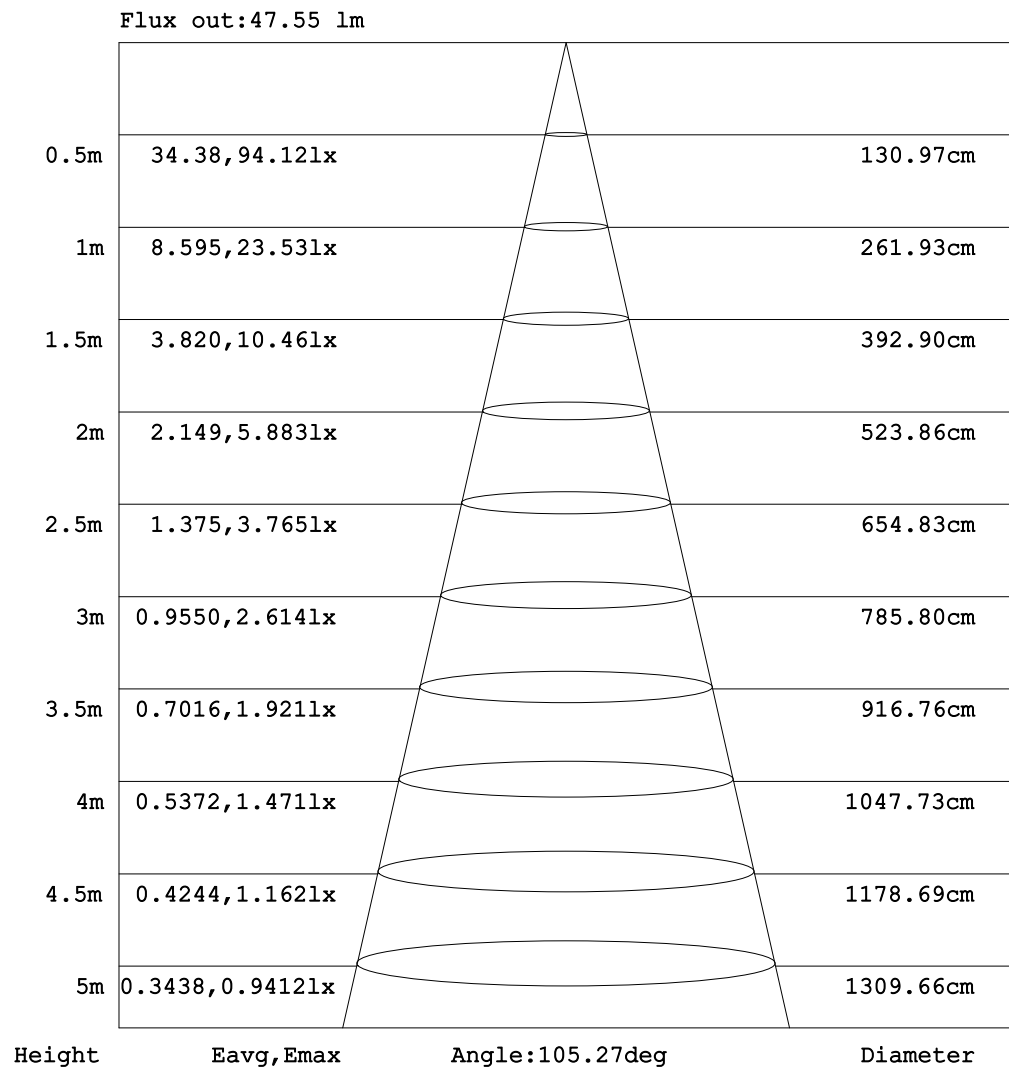


C Range: 0 - 360DEG
C Interval: 30.0DEG
Test Speed: HIGH
Temperature:25.3DEG
Operators:LPC
Test Date:2021-11-30

γ Range: 0 - 180DEG
 γ Interval: 1.0DEG
Test System:EVERFINE GO-2000B_V1 SYSTEM V2.0.362
Humidity:65.0%
Test Distance:9.200m [K=1.0000]
Remarks:

AAI Figure

Test:U:24.00V I:0.2218A P:5.323W PF:1.000 Freq:0Hz Lamp Flux:122.579x1 lm		
NAME: SF21-24V-3528-72-G	TYPE: 硅胶	WEIGHT:
SPEC.:	DIM.: 28mm*11.5mm	SERIAL No.:2021113004
MFR.: OLYMPIA	SUR.:1*0.016	Shielding Angle:



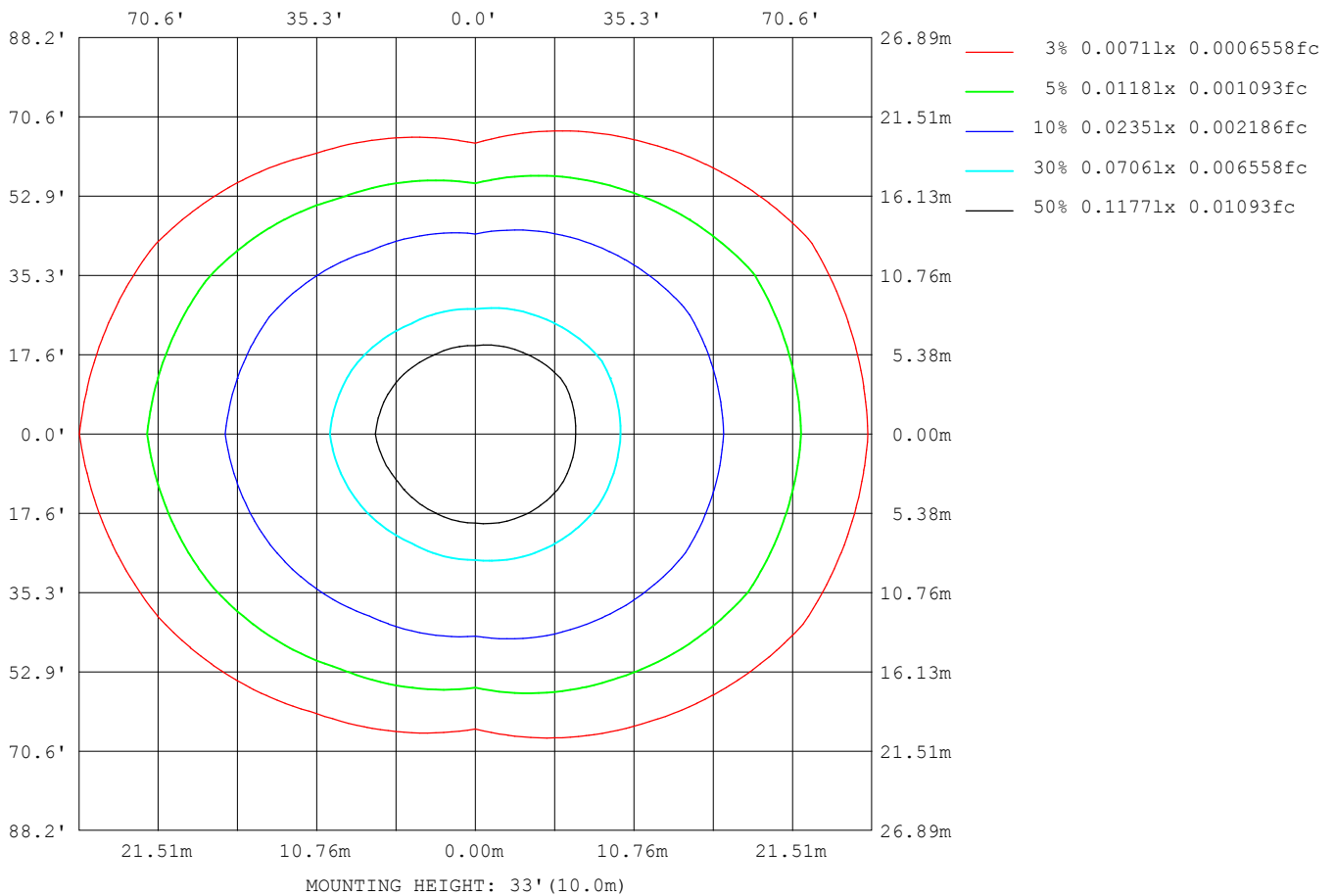
Note: The Curves indicate the illuminated area and the average illumination when the luminaire is at different distance.

C Range: 0 - 360DEG
 C Interval: 30.0DEG
 Test Speed: HIGH
 Temperature: 25.3DEG
 Operators: LPC
 Test Date: 2021-11-30

γ Range: 0 - 180DEG
 γ Interval: 1.0DEG
 Test System: EVERFINE GO-2000B_V1 SYSTEM V2.0.362
 Humidity: 65.0%
 Test Distance: 9.200m [K=1.0000]
 Remarks:

ISOLUX DIAGRAM

Test:U:24.00V I:0.2218A P:5.323W PF:1.000 Freq:0Hz Lamp Flux:122.579x1 lm		
NAME: SF21-24V-3528-72-G	TYPE: 硅胶	WEIGHT:
SPEC.:	DIM.: 28mm*11.5mm	SERIAL No.:2021113004
MFR.: OLYMPIA	SUR.:1*0.016	Shielding Angle:



C Range: 0 - 360DEG
C Interval: 30.0DEG
Test Speed: HIGH
Temperature:25.3DEG
Operators:LPC
Test Date:2021-11-30

γ Range: 0 - 180DEG
 γ Interval: 1.0DEG
Test System:EVERFINE GO-2000B_V1 SYSTEM V2.0.362
Humidity:65.0%
Test Distance:9.200m [K=1.0000]
Remarks:

LED Avg.L Report

Test:U:24.00V I:0.2218A P:5.323W PF:1.000 Freq:0Hz Lamp Flux:122.579x1 lm		
NAME: SF21-24V-3528-72-G	TYPE:硅胶	WEIGHT:
SPEC.:	DIM.: 28mm*11.5mm	SERIAL No.:2021113004
MFR.: OLYMPIA	SUR.:1*0.016	Shielding Angle:

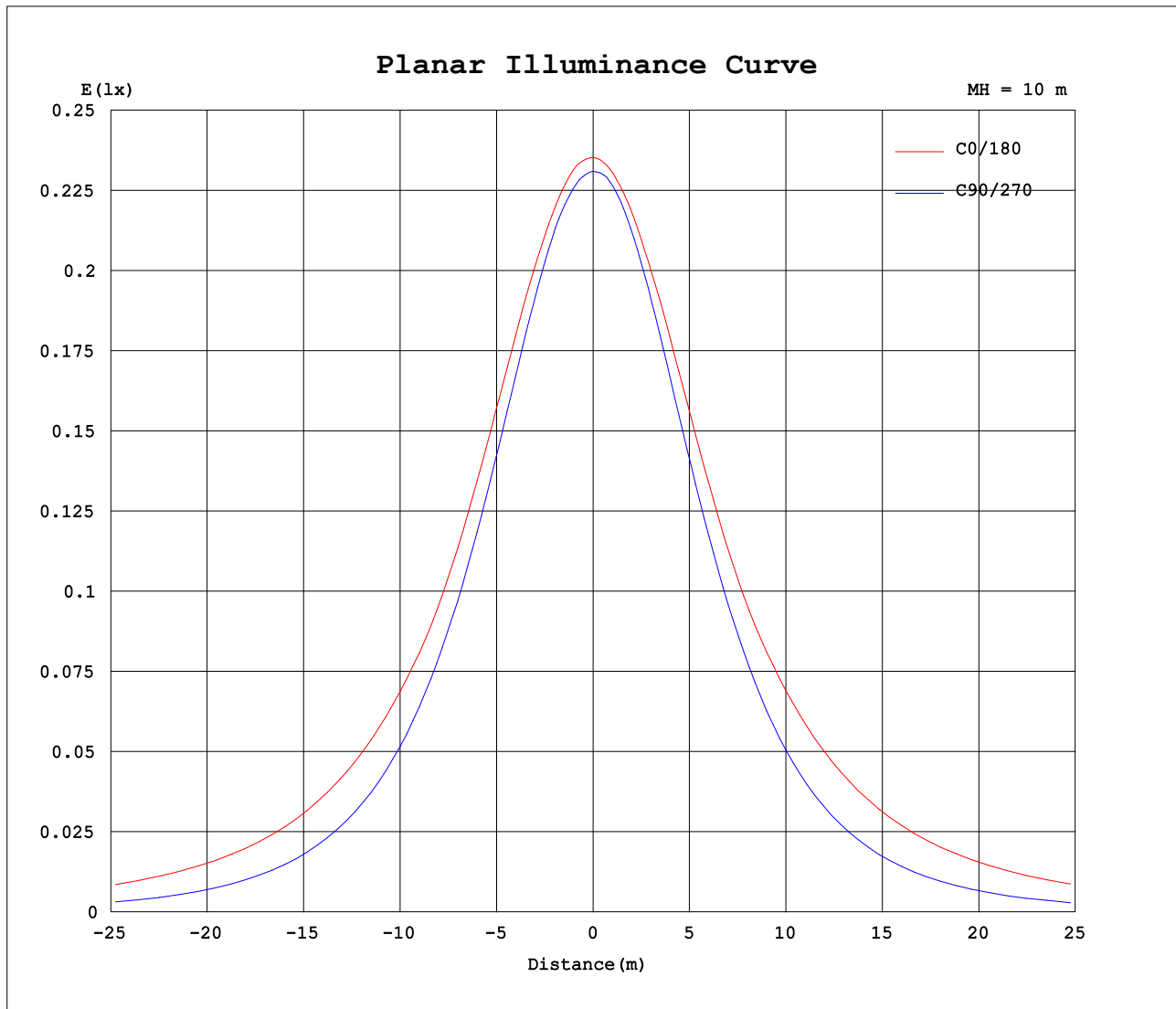
AvgL	cd/m2
L_0~180 (65) av	2521
L_0~180 (75) av	3775
L_0~180 (85) av	10086
L_90~270 (65) av	1048
L_90~270 (75) av	809
L_90~270 (85) av	387
L_45 (65) av	1914
L_45 (75) av	2657
L_45 (85) av	6732

Standard: GB/T 29293-2012

C Range: 0 - 360DEG
 C Interval: 30.0DEG
 Test Speed: HIGH
 Temperature:25.3DEG
 Operators:LPC
 Test Date:2021-11-30

γ Range: 0 - 180DEG
 γ Interval: 1.0DEG
 Test System:EVERFINE GO-2000B_V1 SYSTEM V2.0.362
 Humidity:65.0%
 Test Distance:9.200m [K=1.0000]
 Remarks:

Planar Illuminance Curve



C Range: 0 - 360DEG
C Interval: 30.0DEG
Test Speed: HIGH
Temperature: 25.3DEG
Operators: LPC
Test Date: 2021-11-30

γ Range: 0 - 180DEG
 γ Interval: 1.0DEG
Test System: EVERFINE GO-2000B_V1 SYSTEM V2.0.362
Humidity: 65.0%
Test Distance: 9.200m [K=1.0000]
Remarks:

LUMINOUS DISTRIBUTION INTENSITY DATA

Test:U:24.00V I:0.2218A P:5.323W PF:1.000 Freq:0Hz Lamp Flux:122.579x1 lm		
NAME: SF21-24V-3528-72-G	TYPE: 硅胶	WEIGHT:
SPEC.:	DIM.: 28mm*11.5mm	SERIAL No.:2021113004
MFR.: OLYMPIA	SUR.:1*0.016	Shielding Angle:

Table--1

UNIT: cd

C (DEG) γ (DEG)	0	30	60	90	120	150	180	210	240	270	300	330						
0	23.5	23.4	23.2	23.1	23.1	23.1	23.5	23.4	23.2	23.1	23.1	23.1						
5	23.5	23.4	23.2	23.0	22.9	22.8	23.4	23.3	23.0	23.0	23.2	23.3						
10	23.3	23.3	23.1	22.6	22.4	22.4	23.2	22.9	22.6	22.7	23.0	23.4						
15	23.0	23.0	22.7	22.1	21.8	21.9	22.9	22.5	22.0	22.0	22.6	23.2						
20	22.7	22.6	22.1	21.3	21.0	21.2	22.5	21.9	21.1	21.2	22.0	22.9						
25	22.1	22.1	21.3	20.3	20.0	20.3	22.0	21.2	20.2	20.1	21.2	22.4						
30	21.5	21.4	20.3	19.1	18.9	19.4	21.4	20.3	19.1	18.9	20.2	21.9						
35	20.7	20.6	19.2	17.7	17.7	18.7	20.6	19.4	17.9	17.5	19.1	21.2						
40	19.9	19.7	18.0	16.2	16.3	18.1	19.9	18.6	16.5	16.0	17.9	20.5						
45	19.5	18.8	16.7	14.6	15.0	17.3	19.6	18.0	15.1	14.3	16.7	19.6						
50	18.9	17.8	15.4	12.9	13.7	16.5	19.1	17.2	13.8	12.5	15.5	18.7						
55	18.3	17.1	14.0	11.1	12.5	15.7	18.5	16.4	12.6	10.7	14.2	17.7						
60	17.6	16.3	12.6	9.22	11.2	14.8	17.9	15.6	11.3	8.82	12.8	17.0						
65	16.9	15.5	11.1	7.29	9.86	14.0	17.2	14.7	9.97	6.87	11.3	16.3						
70	16.2	14.6	9.82	5.41	8.64	13.2	16.5	13.9	8.74	4.96	9.98	15.4						
75	15.4	13.8	8.66	3.56	7.57	12.4	15.8	13.1	7.61	3.14	8.83	14.6						
80	14.6	13.0	7.56	1.87	6.66	11.6	15.1	12.3	6.66	1.56	7.74	13.9						
85	13.8	12.2	6.73	0.65	5.94	10.9	14.3	11.6	5.91	0.43	6.85	13.1						
90	13.0	11.5	6.10	0.35	5.41	10.2	13.5	10.9	5.35	0.24	6.21	12.3						
95	12.3	10.8	5.67	0.34	5.03	9.54	12.7	10.2	4.94	0.26	5.74	11.6						
100	11.5	9.88	5.42	0.36	4.85	8.41	12.0	8.91	4.74	0.27	5.47	10.5						
105	10.6	9.00	5.08	0.39	4.41	8.05	11.0	8.52	4.45	0.28	5.16	9.72						
110	9.97	8.61	4.94	0.41	3.76	7.73	10.4	8.20	3.92	0.29	5.02	9.31						
115	9.39	8.24	4.85	0.41	3.33	7.26	9.75	7.82	3.54	0.29	4.87	8.87						
120	8.89	7.90	4.85	0.42	3.38	6.58	8.82	7.23	3.58	0.30	4.54	8.32						
125	8.39	7.57	4.45	0.44	3.27	6.21	8.22	6.74	3.55	0.32	4.32	7.76						
130	7.89	7.22	4.16	0.47	3.07	5.49	7.59	5.95	3.42	0.36	4.20	7.56						
135	7.38	6.32	3.90	0.49	2.86	5.26	6.65	5.95	3.14	0.37	3.89	6.52						
140	6.86	5.44	3.61	0.51	2.68	4.75	5.57	5.52	2.86	0.41	3.58	5.43						
145	6.35	4.58	3.31	0.53	2.40	4.21	4.75	4.96	2.58	0.45	3.25	4.93						
150	5.84	4.01	2.96	0.55	2.15	3.63	5.03	4.34	2.39	0.52	2.98	4.34						
155	5.20	3.48	2.58	0.56	1.83	3.13	4.89	3.71	2.05	0.52	2.95	3.81						
160	4.39	2.81	2.41	0.56	1.88	2.55	4.17	3.22	1.84	0.53	2.94	3.22						
165	3.44	2.24	2.44	0.56	0.85	1.98	3.49	2.77	1.49	0.54	2.89	2.63						
170	1.67	2.12	2.43	0.55	0.59	1.97	1.60	2.10	0.60	0.56	2.80	2.63						
175	1.29	1.76	2.24	0.53	0.57	0.58	1.32	1.47	0.56	0.59	2.66	2.49						
180	0.56	0.56	0.55	0.53	0.54	0.55	0.57	0.57	0.54	0.61	0.58	0.56						

C Range: 0 - 360DEG
C Interval: 30.0DEG
Test Speed: HIGH
Temperature:25.3DEG
Operators:LPC
Test Date:2021-11-30

γ Range: 0 - 180DEG
γ Interval: 1.0DEG
Test System:EVERFINE GO-2000B_V1 SYSTEM V2.0.362
Humidity:65.0%
Test Distance:9.200m [K=1.0000]
Remarks:

Photometric Data Table [cd]

G/C	0.0	30.0	60.0	90.0	120.0	150.0	180.0	210.0	240.0	270.0
0.0	23.53	23.44	23.18	23.10	23.13	23.14	23.53	23.44	23.18	23.10
3.0	23.53	23.44	23.21	23.03	22.99	22.97	23.49	23.35	23.09	23.09
6.0	23.49	23.41	23.17	22.91	22.79	22.76	23.40	23.21	22.92	22.99
9.0	23.38	23.33	23.13	22.72	22.54	22.53	23.28	23.01	22.67	22.77
12.0	23.21	23.19	22.98	22.42	22.25	22.22	23.11	22.75	22.33	22.44
15.0	23.03	23.01	22.68	22.07	21.84	21.88	22.90	22.49	21.95	22.04
18.0	22.84	22.78	22.34	21.61	21.38	21.47	22.70	22.19	21.49	21.56
21.0	22.57	22.50	21.93	21.06	20.83	21.01	22.44	21.80	20.96	20.98
24.0	22.26	22.17	21.45	20.48	20.23	20.52	22.12	21.34	20.37	20.34
27.0	21.90	21.83	20.91	19.80	19.60	19.97	21.76	20.87	19.73	19.64
30.0	21.49	21.42	20.31	19.08	18.91	19.42	21.35	20.34	19.07	18.88
33.0	21.02	20.95	19.64	18.29	18.18	18.97	20.90	19.77	18.35	18.06
36.0	20.53	20.45	18.95	17.43	17.40	18.61	20.44	19.20	17.59	17.19
39.0	20.03	19.93	18.22	16.53	16.60	18.22	20.02	18.71	16.81	16.27
42.0	19.71	19.36	17.47	15.62	15.77	17.82	19.78	18.34	15.98	15.31
45.0	19.47	18.76	16.72	14.61	14.96	17.34	19.55	17.95	15.13	14.31
48.0	19.15	18.15	15.94	13.58	14.23	16.88	19.29	17.53	14.31	13.26
51.0	18.80	17.68	15.13	12.54	13.50	16.39	18.98	17.06	13.55	12.17
54.0	18.42	17.28	14.29	11.46	12.72	15.87	18.63	16.60	12.81	11.09
57.0	17.99	16.83	13.44	10.32	11.95	15.37	18.27	16.09	12.02	9.964
60.0	17.55	16.34	12.56	9.224	11.16	14.84	17.90	15.59	11.27	8.818
63.0	17.14	15.85	11.70	8.068	10.38	14.35	17.49	15.08	10.48	7.648
66.0	16.73	15.28	10.81	6.887	9.617	13.87	17.07	14.57	9.717	6.501
69.0	16.31	14.79	10.05	5.796	8.883	13.38	16.68	14.10	8.983	5.345
72.0	15.86	14.31	9.341	4.615	8.185	12.90	16.27	13.62	8.260	4.215
75.0	15.42	13.83	8.657	3.555	7.566	12.42	15.84	13.14	7.607	3.144
78.0	14.95	13.35	7.978	2.500	6.988	11.94	15.40	12.66	7.019	2.134
81.0	14.48	12.86	7.375	1.571	6.495	11.50	14.94	12.19	6.506	1.294
84.0	14.00	12.41	6.872	0.8525	6.063	11.06	14.46	11.74	6.049	0.6201
87.0	13.51	11.93	6.450	0.3567	5.700	10.62	13.97	11.29	5.668	0.2818
90.0	13.04	11.48	6.097	0.3467	5.409	10.20	13.50	10.87	5.351	0.2442
93.0	12.57	11.06	5.811	0.3368	5.147	9.794	13.04	10.45	5.070	0.2529
96.0	12.11	10.65	5.609	0.3468	4.986	9.432	12.57	10.03	4.885	0.2617
99.0	11.68	10.27	5.458	0.3619	4.875	9.007	12.11	9.486	4.784	0.2704
102.0	11.00	9.207	5.358	0.3720	4.790	8.166	11.42	8.725	4.699	0.2764
105.0	10.60	8.996	5.083	0.3870	4.405	8.046	11.00	8.524	4.448	0.2831
108.0	10.21	8.774	4.940	0.4020	3.831	7.875	10.61	8.333	3.980	0.2856
111.0	9.852	8.523	4.945	0.4081	3.740	7.674	10.24	8.127	3.879	0.2881
114.0	9.505	8.307	5.006	0.4071	3.680	7.496	9.874	7.911	3.747	0.2906
117.0	9.193	8.091	4.804	0.4221	3.462	6.899	9.528	7.575	3.598	0.2931
120.0	8.887	7.900	4.855	0.4222	3.378	6.578	8.824	7.233	3.578	0.2956
123.0	8.590	7.704	4.555	0.4343	3.307	6.377	8.462	6.911	3.571	0.3015
126.0	8.298	7.503	4.418	0.4473	3.232	6.106	8.090	6.650	3.533	0.3216
129.0	7.992	7.297	4.217	0.4624	3.117	5.309	7.738	5.826	3.447	0.3367
132.0	7.686	6.914	4.041	0.4775	2.996	5.548	7.274	6.162	3.301	0.3568
135.0	7.384	6.316	3.896	0.4926	2.860	5.256	6.653	5.951	3.136	0.3719
138.0	7.062	5.778	3.720	0.5060	2.775	4.964	6.128	5.675	2.985	0.3919
141.0	6.756	5.194	3.549	0.5161	2.634	4.658	5.334	5.434	2.804	0.4270
144.0	6.454	4.688	3.378	0.5327	2.458	4.321	3.939	5.072	2.623	0.4422
147.0	6.138	4.376	3.192	0.5480	2.302	3.969	4.866	4.675	2.482	0.4572
150.0	5.836	4.015	2.961	0.5515	2.147	3.633	5.031	4.343	2.387	0.5175
153.0	5.505	3.663	2.684	0.5550	1.926	3.311	5.005	4.007	2.190	0.5155
156.0	5.043	3.331	2.538	0.5585	1.824	3.025	4.773	3.599	1.984	0.5198
159.0	4.555	2.929	2.428	0.5620	1.879	2.678	4.320	3.322	1.839	0.5245
162.0	4.083	2.567	2.422	0.5655	1.865	2.356	3.783	3.106	1.905	0.5327
165.0	3.445	2.241	2.437	0.5649	0.8505	1.980	3.491	2.770	1.494	0.5428
168.0	1.837	2.196	2.434	0.5556	0.5932	2.055	2.915	2.328	0.7829	0.5563
171.0	1.594	2.065	2.423	0.5460	0.5838	1.415	1.552	1.971	0.5898	0.5692
174.0	1.358	1.804	2.298	0.5377	0.5713	0.5987	1.391	1.630	0.5663	0.5829
177.0	1.187	1.620	1.878	0.5327	0.5480	0.5478	1.201	0.9624	0.5428	0.6031
180.0	0.5579	0.5579	0.5528	0.5327	0.5428	0.5478	0.5729	0.5679	0.5428	0.6081
G/C	300.0	330.0								
0.0	23.13	23.14								
3.0	23.16	23.27								
6.0	23.14	23.35								
9.0	23.07	23.36								
12.0	22.86	23.35								
15.0	22.59	23.24								
18.0	22.25	23.05								
21.0	21.84	22.79								
24.0	21.35	22.48								
27.0	20.80	22.17								
30.0	20.20	21.86								

C Range: 0 - 360DEG
 C Interval: 30.0DEG
 Test Speed: HIGH
 Temperature: 25.3DEG
 Operators: LPC
 Test Date: 2021-11-30

γ Range: 0 - 180DEG
 γ Interval: 1.0DEG
 Test System: EVERFINE GO-2000B_V1 SYSTEM V2.0.362
 Humidity: 65.0%
 Test Distance: 9.200m [K=1.0000]
 Remarks:

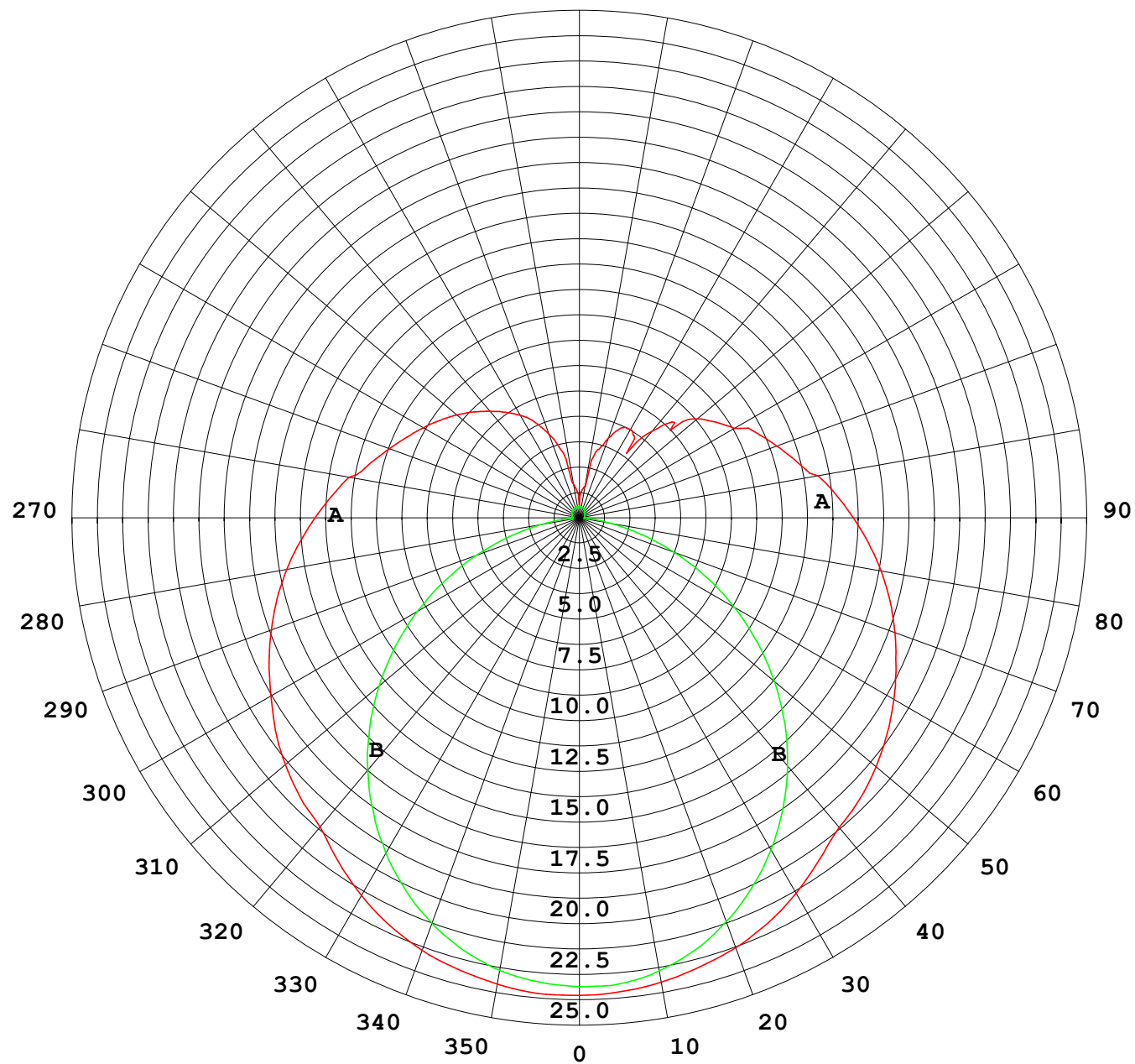
Photometric Data Table [cd]

33.0	19.55	21.52
36.0	18.86	21.11
39.0	18.15	20.66
42.0	17.43	20.17
45.0	16.71	19.64
48.0	15.99	19.08
51.0	15.24	18.47
54.0	14.45	17.88
57.0	13.65	17.44
60.0	12.78	17.03
63.0	11.91	16.59
66.0	11.05	16.12
69.0	10.21	15.63
72.0	9.521	15.10
75.0	8.833	14.62
78.0	8.174	14.16
81.0	7.541	13.71
84.0	7.014	13.25
87.0	6.577	12.78
90.0	6.211	12.33
93.0	5.899	11.89
96.0	5.678	11.47
99.0	5.513	11.07
102.0	5.417	9.956
105.0	5.159	9.720
108.0	4.961	9.489
111.0	5.005	9.228
114.0	4.830	8.957
117.0	4.852	8.666
120.0	4.538	8.319
123.0	4.367	8.007
126.0	4.312	7.660
129.0	4.256	7.594
132.0	4.060	7.269
135.0	3.895	6.520
138.0	3.758	6.082
141.0	3.507	5.174
144.0	3.311	5.077
147.0	3.160	4.650
150.0	2.979	4.338
153.0	2.900	4.067
156.0	2.960	3.710
159.0	2.945	3.348
162.0	2.930	2.942
165.0	2.890	2.629
168.0	2.850	2.628
171.0	2.779	2.638
174.0	2.683	2.538
177.0	2.398	2.448
180.0	0.5830	0.5579

C Range: 0 - 360DEG
C Interval: 30.0DEG
Test Speed: HIGH
Temperature:25.3DEG
Operators:LPC
Test Date:2021-11-30

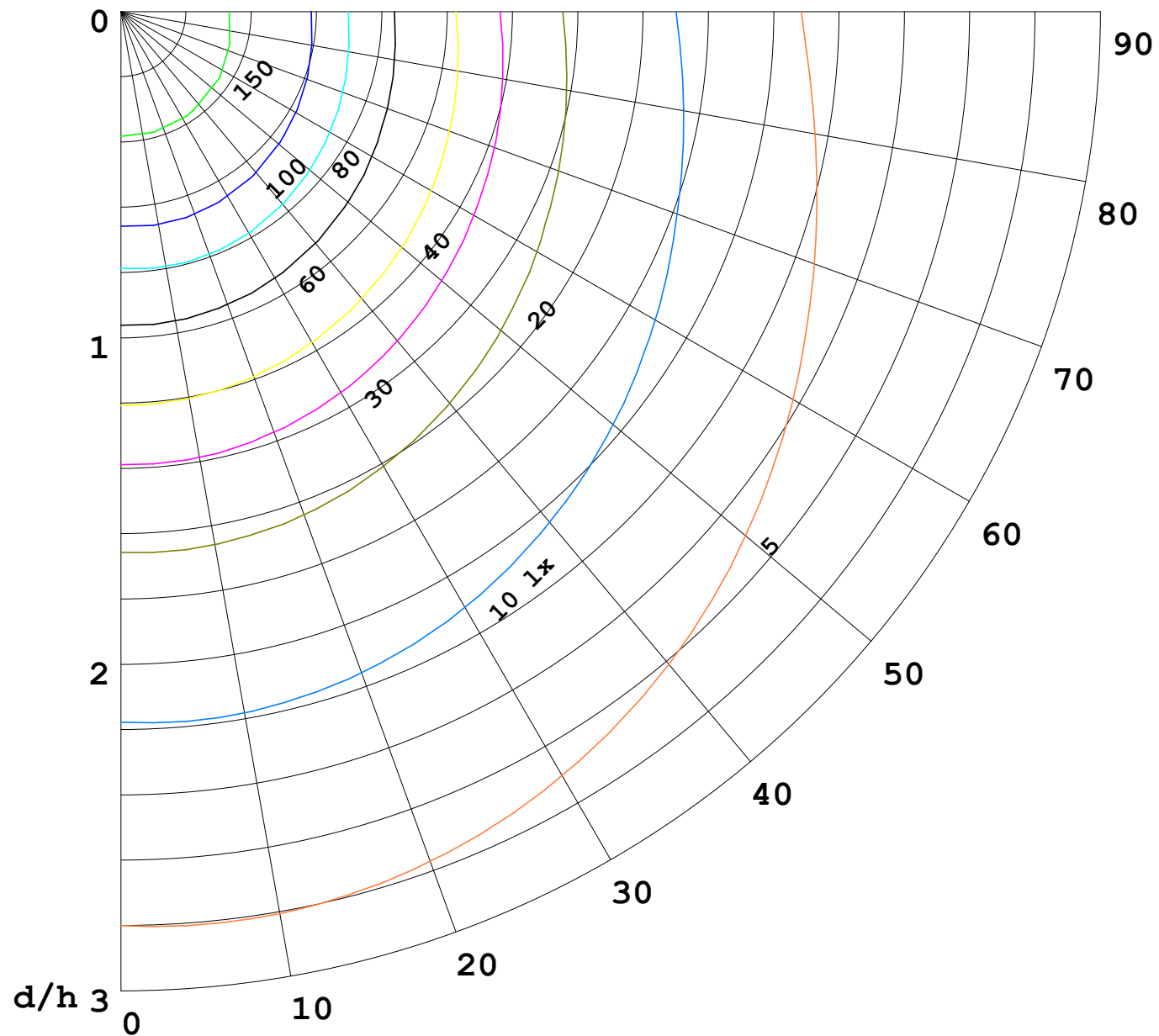
γ Range: 0 - 180DEG
γ Interval: 1.0DEG
Test System:EVERFINE GO-2000B_V1 SYSTEM V2.0.362
Humidity:65.0%
Test Distance:9.200m [K=1.0000]
Remarks:

I (cd)



1000 lm

$\kappa = 1$



F = 5000 lm
 K = 0.7
 Hcc = 0.0 m
 Hfc = 0.0 m
 Eave = 100 lx

	Pcc	Pw	Pfc
—	70	50	30
—	50	30	20

