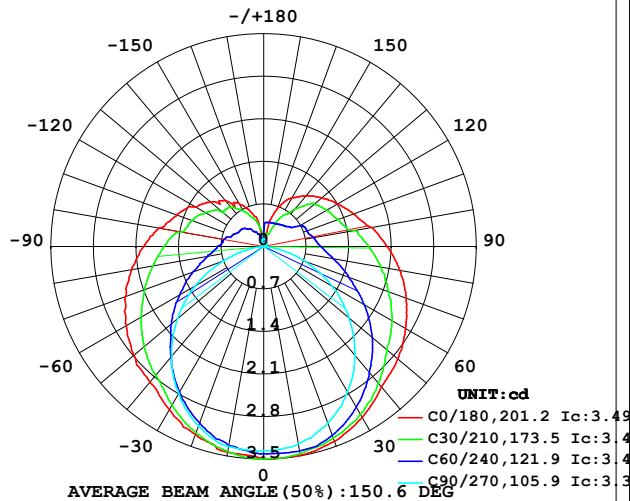


LUMINAIRE PHOTOMETRIC TEST REPORT

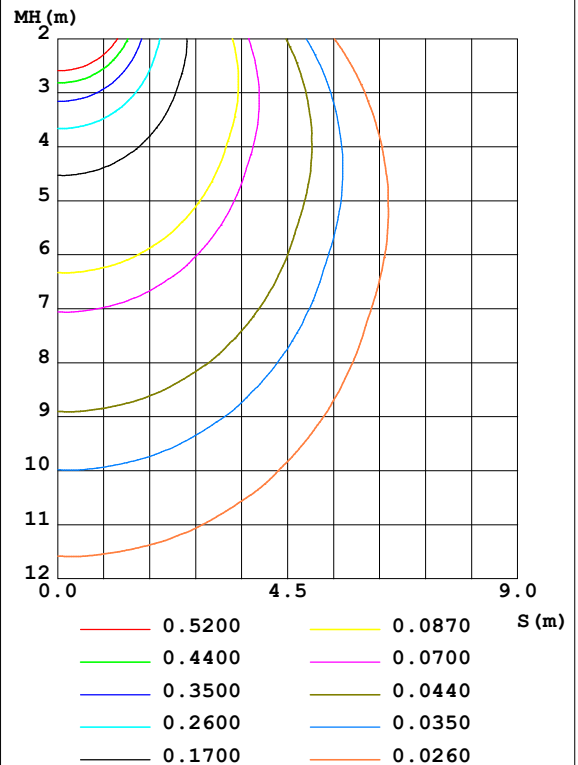
Test:U:24.00V I:0.2336A P:5.606W PF:1.000 Freq:0Hz Lamp Flux:18.1649x1 lm		
NAME: SF21-24V-3528-72-B	TYPE: 硅胶	WEIGHT:
SPEC.:	DIM.: 28mm*11.5mm	SERIAL No.:2021113005
MFR.: OLYMPIA	SUR.:1*0.016	Shielding Angle:

DATA OF LAMP		PHOTOMETRIC DATA				Eff: 3.24 lm/W
MODEL	3528	I _{max} (cd)	3.498	S/MH (C0/180)	1.33	
NOMINAL POWER (W)	5	LOR (%)	100.0	S/MH (C90/270)	1.24	
RATED VOLTAGE (V)	24	TOTAL FLUX (lm)	18.165	η UP, DN (C0-180)	12.9, 36.1	
NOMINAL FLUX (lm)	18.1649	CIE CLASS	SEMI-D.	η UP, DN (C180-360)	13.9, 37.1	
LAMPS INSIDE	1	η up (%)	26.9	CIBSE SHR NOM	1.50	
TEST VOLTAGE (V)	24.0	η down (%)	73.1	CIBSE SHR MAX	1.50	

LUMINOUS INTENSITY DISTRIBUTION DIAGRAM



C0 PLANE ISOLUX DIAGRAM (UNIT: lx)



C Range: 0 - 360DEG
 C Interval: 30.0DEG
 Test Speed: HIGH
 Temperature: 25.3DEG
 Operators: LPC
 Test Date: 2021-11-30

γ Range: 0 - 180DEG
 γ Interval: 1.0DEG
 Test System: EVERFINE GO-2000B_V1 SYSTEM V2.0.362
 Humidity: 65.0%
 Test Distance: 9.200m [K=1.0000]
 Remarks:

ZONAL FLUX DIAGRAM

ZONAL FLUX DIAGRAM:

γ	C0	C45	C90	C135	C180	C225	C270	C315	γ	Φ zone	Φ total	%lum, lamp
10	3.489	3.439	3.297	3.272	3.436	3.375	3.341	3.404	0- 10	0.3245	0.3245	1.79,1.79
20	3.413	3.330	3.091	3.036	3.292	3.176	3.146	3.333	10- 20	0.9360	1.260	6.94,6.94
30	3.247	3.119	2.759	2.759	3.101	2.892	2.790	3.166	20- 30	1.436	2.697	14.8,14.8
40	3.016	2.822	2.346	2.473	2.920	2.568	2.358	2.927	30- 40	1.778	4.475	24.6,24.6
50	2.880	2.490	1.834	2.174	2.784	2.274	1.855	2.623	40- 50	1.957	6.432	35.4,35.4
60	2.694	2.176	1.296	1.847	2.613	1.960	1.302	2.282	50- 60	1.977	8.409	46.3,46.3
70	2.493	1.847	0.7282	1.538	2.422	1.671	0.7141	1.972	60- 70	1.851	10.26	56.5,56.5
80	2.272	1.561	0.2006	1.289	2.206	1.392	0.2013	1.681	70- 80	1.631	11.89	65.5,65.5
90	2.031	1.334	0.0101	1.098	1.970	1.201	0	1.460	80- 90	1.393	13.28	73.1,73.1
100	1.809	1.176	0.0151	0.9373	1.748	1.021	0	1.259	90-100	1.214	14.50	79.8,79.8
110	1.573	1.041	0.0201	0.7992	1.523	0.9021	0	1.133	100-110	1.011	15.51	85.4,85.4
120	1.402	0.9449	0.0402	0.6627	1.301	0.7947	0.0000	1.013	110-120	0.8502	16.36	90.1,90.1
130	1.247	0.8017	0.0653	0.5949	1.136	0.6562	0	0.9323	120-130	0.6767	17.03	93.8,93.8
140	1.086	0.6356	0.0653	0.4749	0.9996	0.6116	0.0402	0.7541	130-140	0.5075	17.54	96.6,96.6
150	0.9199	0.4874	0.0653	0.3392	0.8239	0.4774	0.0402	0.5976	140-150	0.3317	17.87	98.4,98.4
160	0.6587	0.3150	0.0653	0.2134	0.5929	0.3544	0.0703	0.5037	150-160	0.1904	18.06	99.4,99.4
170	0.1709	0.3092	0.0653	0.1299	0.1456	0.1609	0.1178	0.4412	160-170	0.0831	18.15	99.9,99.9
180	0.0302	0.0352	0.0553	0.1005	0.0402	0.0352	0.1307	0.1282	170-180	0.0175	18.16	100,100
DEG	LUMINOUS INTENSITY:cd									UNIT:lm		

Conical surface Flux(90deg): 5.4406 lm

%lum = 30.0%

%lamp = 30.0%

Conical surface Flux(120deg): 8.4088 lm

%lum = 46.3%

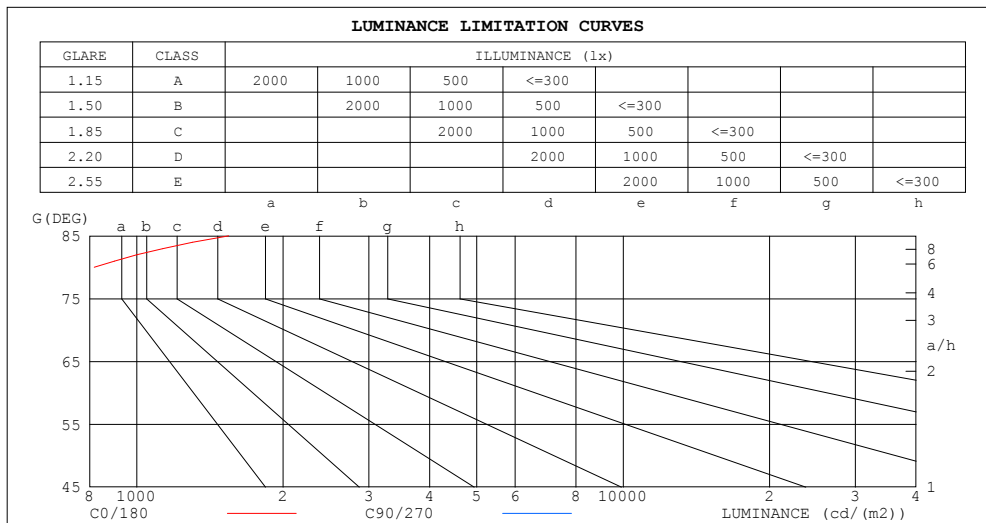
%lamp = 46.3%

C Range: 0 - 360DEG
 C Interval: 30.0DEG
 Test Speed: HIGH
 Temperature:25.3DEG
 Operators:LPC
 Test Date:2021-11-30

γ Range: 0 - 180DEG
 γ Interval: 1.0DEG
 Test System:EVERFINE GO-2000B_V1 SYSTEM V2.0.362
 Humidity:65.0%
 Test Distance:9.200m [K=1.0000]
 Remarks:

LUMINANCE LIMITATION CURVES

Test:U:24.00V I:0.2336A P:5.606W PF:1.000 Freq:0Hz Lamp Flux:18.1649x1 lm		
NAME: SF21-24V-3528-72-B	TYPE: 硅胶	WEIGHT:
SPEC.:	DIM.: 28mm*11.5mm	SERIAL No.:2021113005
MFR.: OLYMPIA	SUR.:1*0.016	Shielding Angle:



LUMINANCE cd/(m2)		
G (DEG)	C0/180	C90/270
85	1546	18
80	818	72
75	577	108
70	456	133
65	384	150
60	337	162
55	305	171
50	280	178
45	261	186

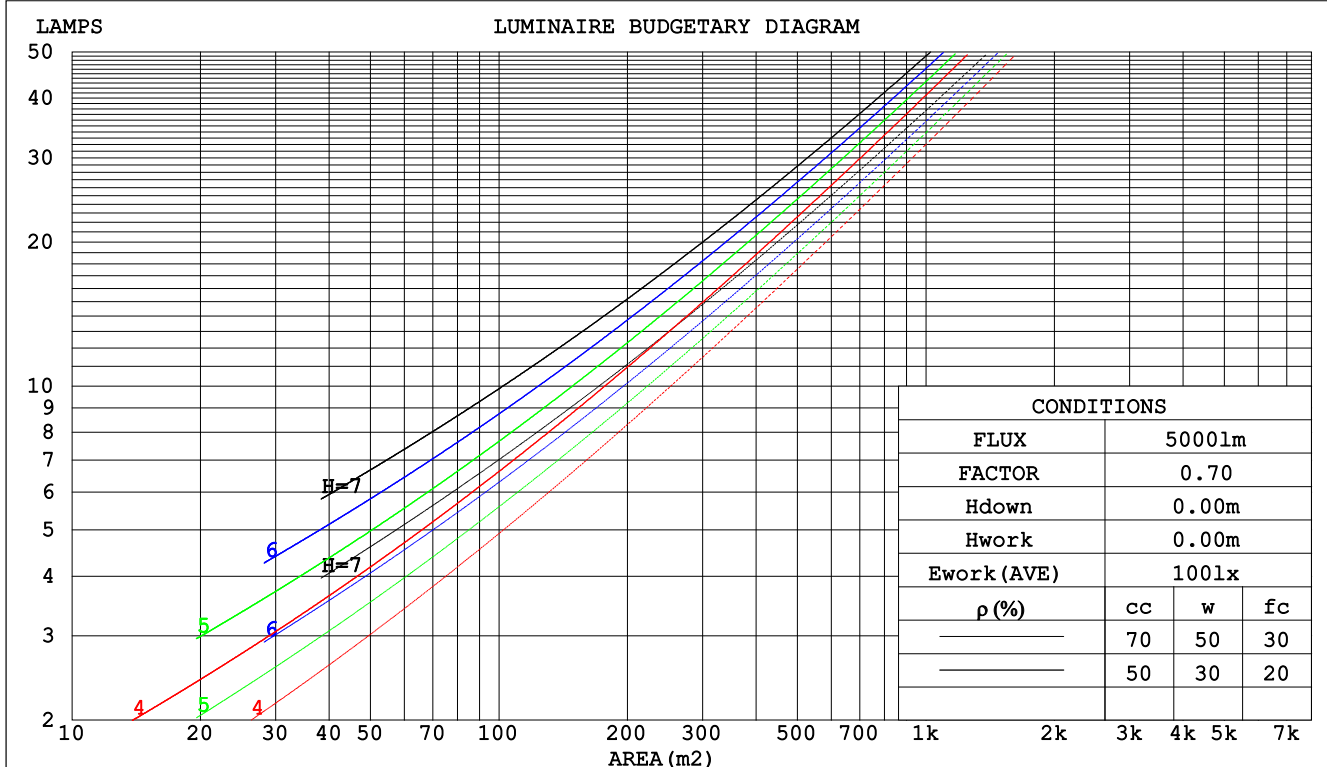
C Range: 0 - 360DEG
C Interval: 30.0DEG
Test Speed: HIGH
Temperature:25.3DEG
Operators:LPC
Test Date:2021-11-30

γ Range: 0 - 180DEG
 γ Interval: 1.0DEG
Test System:EVERFINE GO-2000B_V1 SYSTEM V2.0.362
Humidity:65.0%
Test Distance:9.200m [K=1.0000]
Remarks:

CU AND LUMINAIRE BUDGETARY ESTIMATE DIAGRAM

Test:U:24.00V I:0.2336A P:5.606W PF:1.000 Freq:0Hz Lamp Flux:18.1649x1 lm		
NAME: SF21-24V-3528-72-B	TYPE: 硅胶	WEIGHT:
SPEC.:	DIM.: 28mm*11.5mm	SERIAL No.:2021113005
MFR.: OLYMPIA	SUR.:1*0.016	Shielding Angle:

pcc	80%			70%			50%			30%			10%			0
pw	50%	30%	10%	50%	30%	10%	50%	30%	10%	50%	30%	10%	50%	30%	10%	0
pfc	20%			20%			20%			20%			20%			0
RCR	RCR:Room Cavity Ratio						Coefficients of Utilization(CU)									
0.0	1.13	1.13	1.13	1.07	1.07	1.07	.96	.96	.96	.86	.86	.86	.77	.77	.77	.73
1.0	.94	.88	.83	.89	.84	.79	.79	.76	.72	.71	.68	.65	.63	.61	.59	.54
2.0	.80	.72	.66	.76	.69	.63	.68	.62	.57	.60	.56	.52	.54	.50	.47	.43
3.0	.69	.60	.53	.66	.58	.51	.59	.52	.47	.52	.47	.43	.47	.42	.39	.35
4.0	.61	.51	.44	.58	.49	.43	.52	.45	.39	.46	.40	.36	.41	.36	.32	.29
5.0	.54	.45	.38	.51	.43	.36	.46	.39	.33	.41	.35	.31	.37	.32	.28	.25
6.0	.48	.39	.32	.46	.37	.31	.41	.34	.29	.37	.31	.26	.33	.28	.24	.22
7.0	.43	.35	.28	.41	.33	.27	.37	.30	.25	.34	.28	.23	.30	.25	.21	.19
8.0	.39	.31	.25	.38	.30	.24	.34	.27	.22	.31	.25	.21	.28	.23	.19	.17
9.0	.36	.28	.22	.34	.27	.21	.31	.25	.20	.28	.23	.18	.25	.21	.17	.15
10.0	.33	.25	.20	.32	.24	.19	.29	.22	.18	.26	.21	.17	.24	.19	.15	.13



C Range: 0 - 360DEG
 C Interval: 30.0DEG
 Test Speed: HIGH
 Temperature:25.3DEG
 Operators:LPC
 Test Date:2021-11-30

γ Range: 0 - 180DEG
 γ Interval: 1.0DEG
 Test System:EVERFINE GO-2000B_V1 SYSTEM V2.0.362
 Humidity:65.0%
 Test Distance:9.200m [K=1.0000]
 Remarks:

WEC AND CCEC

Test:U:24.00V I:0.2336A P:5.606W PF:1.000 Freq:0Hz Lamp Flux:18.1649x1 lm		
NAME: SF21-24V-3528-72-B	TYPE: 硅胶	WEIGHT:
SPEC.:	DIM.: 28mm*11.5mm	SERIAL No.:2021113005
MFR.: OLYMPIA	SUR.:1*0.016	Shielding Angle:

pcc	80%			70%			50%			30%			10%			0	
pw	50%	30%	10%	50%	30%	10%	50%	30%	10%	50%	30%	10%	50%	30%	10%	0	
pfc	20%			20%			20%			20%			20%			0	
RCR	RCR:Room Cavity Ratio						Wall Exitance Coefficients(WEC)										
0.0																	
1.0	.384	.219	.069	.369	.210	.067	.340	.195	.062	.314	.181	.058	.289	.168	.054		
2.0	.330	.181	.056	.316	.174	.054	.290	.161	.050	.266	.149	.047	.244	.138	.043		
3.0	.293	.156	.047	.280	.150	.045	.256	.139	.042	.234	.128	.039	.214	.118	.037		
4.0	.263	.137	.040	.252	.132	.039	.230	.122	.036	.210	.113	.034	.191	.104	.032		
5.0	.239	.122	.035	.228	.117	.034	.209	.109	.032	.190	.100	.030	.173	.092	.028		
6.0	.219	.110	.031	.209	.106	.030	.191	.098	.029	.174	.091	.027	.158	.083	.025		
7.0	.202	.100	.028	.193	.096	.027	.176	.089	.026	.161	.082	.024	.146	.076	.022		
8.0	.187	.091	.026	.179	.088	.025	.164	.082	.023	.149	.076	.022	.136	.070	.020		
9.0	.174	.084	.024	.167	.081	.023	.153	.075	.021	.139	.070	.020	.127	.064	.019		
10.0	.163	.078	.022	.156	.075	.021	.143	.070	.020	.131	.065	.018	.119	.060	.017		

pcc	80%			70%			50%			30%			10%			0	
pw	50%	30%	10%	50%	30%	10%	50%	30%	10%	50%	30%	10%	50%	30%	10%	0	
pfc	20%			20%			20%			20%			20%			0	
RCR	RCR:Room Cavity Ratio						Ceiling Cavity Exitance Coefficients(CCEC)										
0.0	.395	.395	.395	.338	.338	.338	.231	.231	.231	.132	.132	.132	.042	.042	.042		
1.0	.392	.362	.335	.335	.311	.288	.229	.214	.199	.132	.124	.116	.042	.040	.037		
2.0	.385	.340	.301	.330	.292	.260	.226	.202	.182	.130	.118	.106	.042	.038	.035		
3.0	.378	.323	.280	.324	.279	.243	.222	.194	.170	.128	.113	.100	.041	.037	.033		
4.0	.370	.311	.266	.318	.269	.231	.218	.187	.163	.126	.110	.096	.041	.036	.032		
5.0	.363	.302	.256	.311	.261	.223	.214	.182	.158	.124	.107	.093	.040	.035	.031		
6.0	.355	.294	.250	.305	.254	.217	.211	.178	.154	.122	.105	.091	.039	.034	.030		
7.0	.348	.287	.245	.300	.249	.213	.207	.175	.151	.120	.103	.090	.039	.034	.030		
8.0	.342	.282	.241	.294	.244	.210	.204	.172	.149	.118	.101	.089	.038	.033	.029		
9.0	.336	.277	.238	.289	.241	.207	.200	.169	.147	.117	.100	.088	.038	.033	.029		
10.0	.330	.273	.235	.284	.237	.205	.197	.167	.146	.115	.099	.087	.037	.032	.029		

C Range: 0 - 360DEG
 C Interval: 30.0DEG
 Test Speed: HIGH
 Temperature:25.3DEG
 Operators:LPC
 Test Date:2021-11-30

γ Range: 0 - 180DEG
 γ Interval: 1.0DEG
 Test System:EVERFINE GO-2000B_V1 SYSTEM V2.0.362
 Humidity:65.0%
 Test Distance:9.200m [K=1.0000]
 Remarks:

UGR(Unified Glare Rating) Table

Test:U:24.00V I:0.2336A P:5.606W PF:1.000 Freq:0Hz Lamp Flux:18.1649x1 lm										
NAME: SF21-24V-3528-72-B					TYPE: 硅胶			WEIGHT:		
SPEC.:					DIM.: 28mm*11.5mm			SERIAL No.:2021113005		
MFR.: OLYMPIA					SUR.:1*0.016			Shielding Angle:		
ceiling/cavity	0.7	0.7	0.5	0.5	0.3	0.7	0.7	0.5	0.5	0.3
walls	0.5	0.3	0.5	0.3	0.3	0.5	0.3	0.5	0.3	0.3
working plane	0.2	0.2	0.2	0.2	0.2	0.2	0.2	0.2	0.2	0.2
Room dimensions	Viewed crosswise					Viewed endwise				
x = 2H y = 2H	21.5	22.8	22.1	23.4	24.2	19.0	20.3	19.6	20.9	21.7
3H	24.4	25.6	25.1	26.2	27.0	20.4	21.6	21.1	22.3	23.0
4H	26.0	27.2	26.7	27.8	28.6	21.0	22.1	21.6	22.7	23.5
6H	27.9	28.9	28.5	29.6	30.4	21.3	22.3	21.9	23.0	23.8
8H	28.9	29.9	29.6	30.6	31.4	21.3	22.3	22.0	23.0	23.8
12H	30.0	31.0	30.7	31.7	32.6	21.3	22.3	22.0	23.0	23.8
4H 2H	22.1	23.2	22.8	23.9	24.7	20.3	21.4	21.0	22.1	22.9
3H	25.2	26.2	25.9	26.9	27.7	22.1	23.1	22.8	23.8	24.6
4H	27.0	27.9	27.8	28.7	29.5	22.9	23.8	23.6	24.5	25.4
6H	29.1	29.9	29.8	30.6	31.5	23.5	24.3	24.2	25.0	25.9
8H	30.2	30.9	31.0	31.7	32.6	23.6	24.4	24.4	25.1	26.1
12H	31.5	32.2	32.3	33.0	33.9	23.7	24.4	24.5	25.2	26.1
8H 4H	27.4	28.1	28.1	28.9	29.8	24.2	24.9	25.0	25.7	26.6
6H	29.7	30.4	30.5	31.2	32.1	25.3	25.9	26.1	26.7	27.7
8H	31.1	31.6	31.9	32.5	33.4	25.8	26.3	26.6	27.1	28.1
12H	32.6	33.1	33.5	34.0	35.0	26.1	26.6	26.9	27.4	28.4
12H 4H	27.4	28.1	28.2	28.9	29.8	24.6	25.3	25.4	26.1	27.0
6H	29.9	30.4	30.7	31.2	32.2	26.0	26.6	26.8	27.4	28.4
8H	31.3	31.8	32.1	32.6	33.6	26.7	27.2	27.5	28.0	29.0
Variations with the observer position at spacings:										
S = 1.0H	+ 0.1 / - 0.1					+ 0.1 / - 0.1				
1.5H	+ 0.2 / - 0.2					+ 0.2 / - 0.3				
2.0H	+ 0.2 / - 0.3					+ 0.3 / - 0.4				

CIE Pub.117, 18.16 lm Total Lamp Luminous Flux Correct (8log(F/F0) = -13.9)

C Range: 0 - 360DEG
C Interval: 30.0DEG
Test Speed: HIGH
Temperature:25.3DEG
Operators:LPC
Test Date:2021-11-30

γ Range: 0 - 180DEG
γ Interval: 1.0DEG
Test System:EVERFINE GO-2000B_V1 SYSTEM V2.0.362
Humidity:65.0%
Test Distance:9.200m [K=1.0000]
Remarks:

UTILIZATION FACTORS TABLE

Test:U:24.00V I:0.2336A P:5.606W PF:1.000 Freq:0Hz Lamp Flux:18.1649x1 lm		
NAME: SF21-24V-3528-72-B	TYPE: 硅胶	WEIGHT:
SPEC.:	DIM.: 28mm*11.5mm	SERIAL No.:2021113005
MFR.: OLYMPIA	SUR.:1*0.016	Shielding Angle:

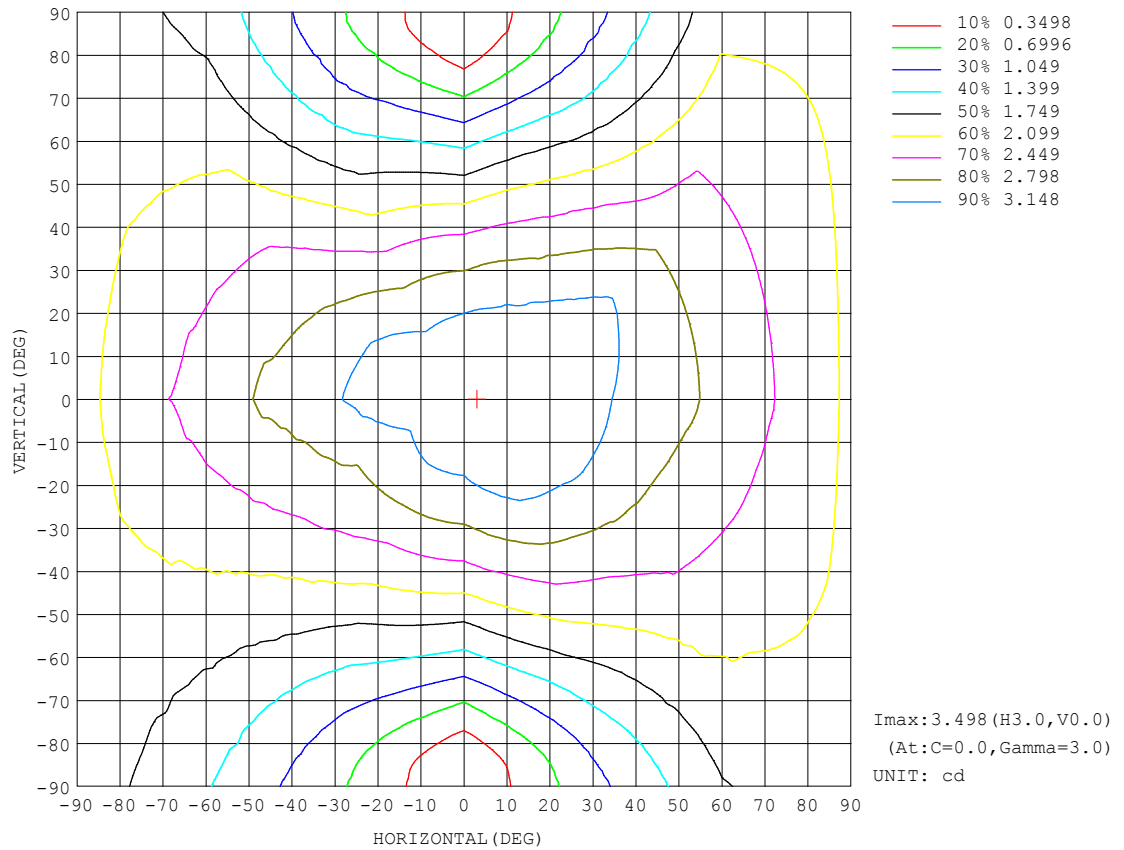
REFLECTANCE										
Ceiling	0.8	0.8	0.8	0.7	0.7	0.7	0.5	0.5	0.5	0
Walls	0.7	0.5	0.3	0.7	0.5	0.3	0.7	0.5	0.3	0
Working plane	0.2	0.2	0.2	0.2	0.2	0.2	0.2	0.2	0.2	0
ROOM INDEX	UTILIZATION FACTORS (PERCENT) $k(RI) \times RCR = 5$									
$k = 0.60$	45	33	26	44	32	25	41	31	25	18
0.80	54	41	33	52	40	32	49	38	31	23
1.00	62	49	40	59	47	39	55	47	38	28
1.25	69	56	47	66	54	46	61	51	44	33
1.50	74	61	52	70	59	51	65	55	48	37
2.00	81	70	61	77	67	59	70	62	56	42
2.50	86	75	67	82	72	65	74	66	60	46
3.00	89	80	72	85	76	69	77	70	64	49
4.00	94	86	79	89	82	76	81	75	70	53
5.00	97	90	84	92	86	80	83	78	74	56
ROOM INDEX	UF (total)									Direct
According to DIN EN 13032-2 2004			Suspended					SHRNOM = 1.25		

C Range: 0 - 360DEG
C Interval: 30.0DEG
Test Speed: HIGH
Temperature:25.3DEG
Operators:LPC
Test Date:2021-11-30

γ Range: 0 - 180DEG
 γ Interval: 1.0DEG
Test System:EVERFINE GO-2000B_V1 SYSTEM V2.0.362
Humidity:65.0%
Test Distance:9.200m [K=1.0000]
Remarks:

ISOCANDELA DIAGRAM

Test:U:24.00V I:0.2336A P:5.606W PF:1.000 Freq:0Hz Lamp Flux:18.1649x1 lm		
NAME: SF21-24V-3528-72-B	TYPE: 硅胶	WEIGHT:
SPEC.:	DIM.: 28mm*11.5mm	SERIAL No.:2021113005
MFR.: OLYMPIA	SUR.:1*0.016	Shielding Angle:

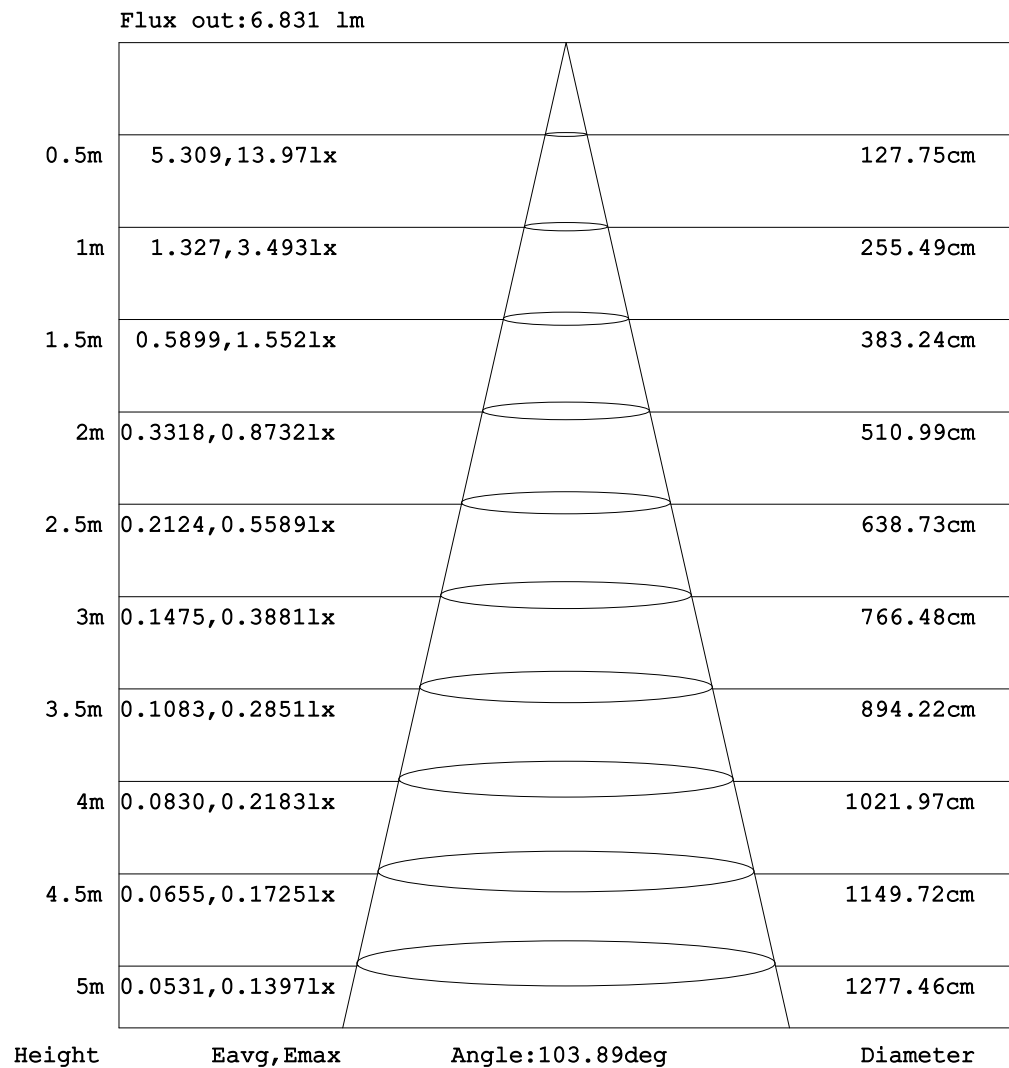


C Range: 0 - 360DEG
C Interval: 30.0DEG
Test Speed: HIGH
Temperature: 25.3DEG
Operators: LPC
Test Date: 2021-11-30

γ Range: 0 - 180DEG
 γ Interval: 1.0DEG
Test System: EVERFINE GO-2000B_V1 SYSTEM V2.0.362
Humidity: 65.0%
Test Distance: 9.200m [K=1.0000]
Remarks:

AAI Figure

Test:U:24.00V I:0.2336A P:5.606W PF:1.000 Freq:0Hz Lamp Flux:18.1649x1 lm		
NAME: SF21-24V-3528-72-B	TYPE: 硅胶	WEIGHT:
SPEC.:	DIM.: 28mm*11.5mm	SERIAL No.:2021113005
MFR.: OLYMPIA	SUR.:1*0.016	Shielding Angle:



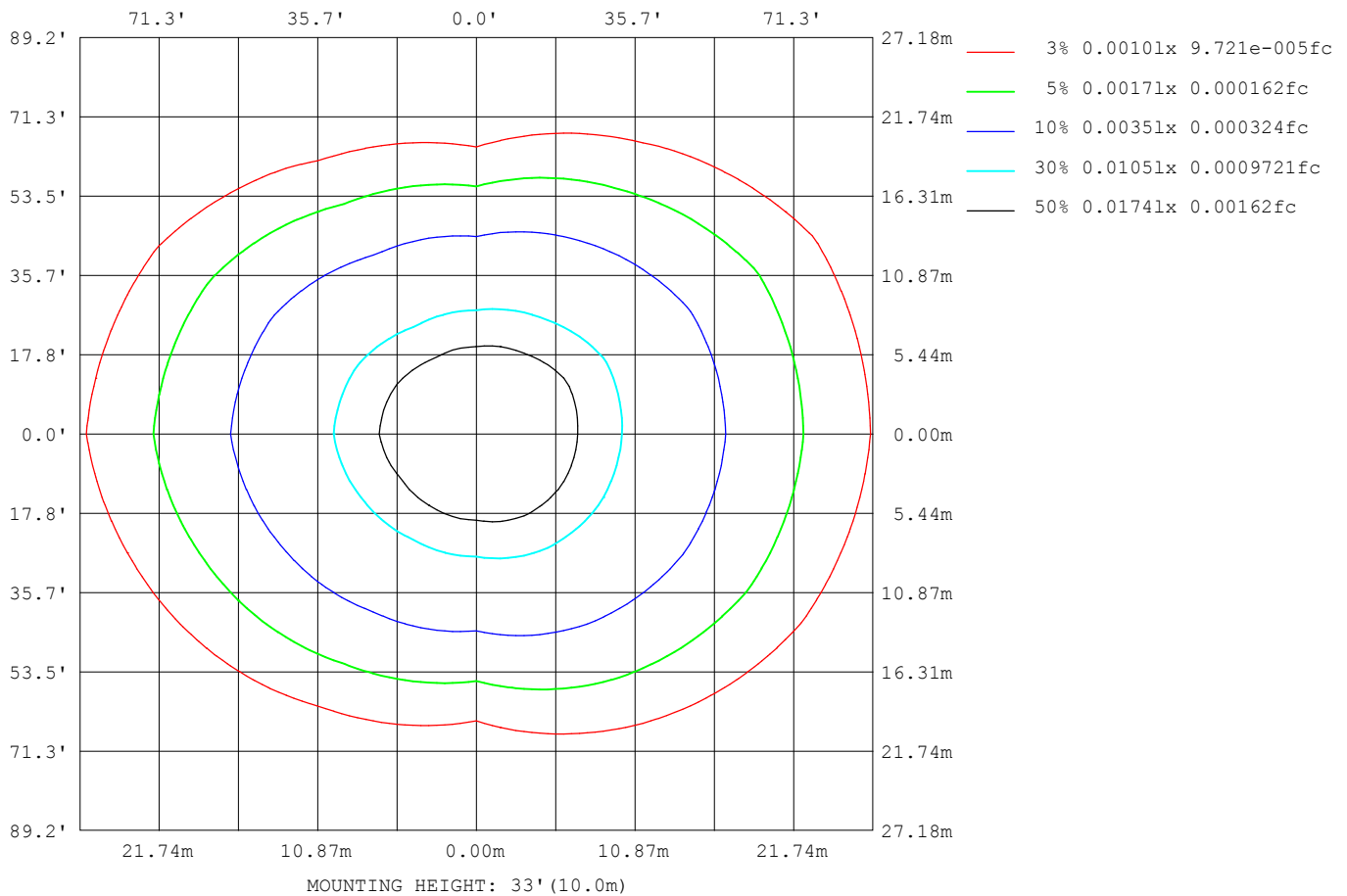
Note: The Curves indicate the illuminated area and the average illumination when the luminaire is at different distance.

C Range: 0 - 360DEG
 C Interval: 30.0DEG
 Test Speed: HIGH
 Temperature: 25.3DEG
 Operators: LPC
 Test Date: 2021-11-30

γ Range: 0 - 180DEG
 γ Interval: 1.0DEG
 Test System: EVERFINE GO-2000B_V1 SYSTEM V2.0.362
 Humidity: 65.0%
 Test Distance: 9.200m [K=1.0000]
 Remarks:

ISOLUX DIAGRAM

Test:U:24.00V I:0.2336A P:5.606W PF:1.000 Freq:0Hz Lamp Flux:18.1649x1 lm		
NAME: SF21-24V-3528-72-B	TYPE: 硅胶	WEIGHT:
SPEC.:	DIM.: 28mm*11.5mm	SERIAL No.:2021113005
MFR.: OLYMPIA	SUR.:1*0.016	Shielding Angle:



C Range: 0 - 360DEG
C Interval: 30.0DEG
Test Speed: HIGH
Temperature:25.3DEG
Operators:LPC
Test Date:2021-11-30

γ Range: 0 - 180DEG
 γ Interval: 1.0DEG
Test System:EVERFINE GO-2000B_V1 SYSTEM V2.0.362
Humidity:65.0%
Test Distance:9.200m [K=1.0000]
Remarks:

LED Avg.L Report

Test:U:24.00V I:0.2336A P:5.606W PF:1.000 Freq:0Hz Lamp Flux:18.1649x1 lm		
NAME: SF21-24V-3528-72-B	TYPE:硅胶	WEIGHT:
SPEC.:	DIM.: 28mm*11.5mm	SERIAL No.:2021113005
MFR.: OLYMPIA	SUR.:1*0.016	Shielding Angle:

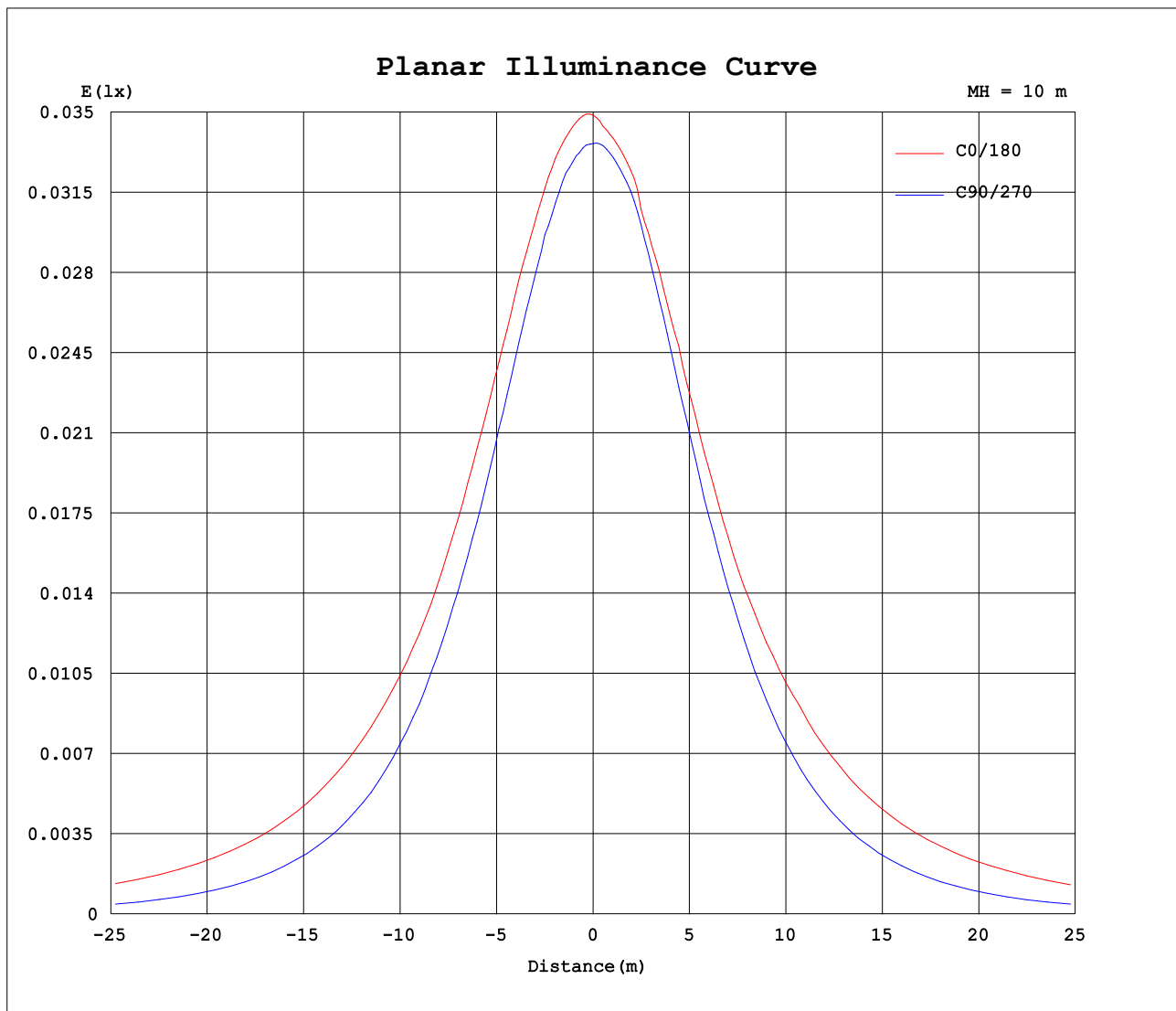
AvgL	cd/m2
L_0~180 (65) av	379
L_0~180 (75) av	567
L_0~180 (85) av	1523
L_90~270 (65) av	149
L_90~270 (75) av	107
L_90~270 (85) av	20
L_45 (65) av	285
L_45 (75) av	396
L_45 (85) av	1005

Standard: GB/T 29293-2012

C Range: 0 - 360DEG
C Interval: 30.0DEG
Test Speed: HIGH
Temperature:25.3DEG
Operators:LPC
Test Date:2021-11-30

γ Range: 0 - 180DEG
γ Interval: 1.0DEG
Test System:EVERFINE GO-2000B_V1 SYSTEM V2.0.362
Humidity:65.0%
Test Distance:9.200m [K=1.0000]
Remarks:

Planar Illuminance Curve



C Range: 0 - 360DEG
C Interval: 30.0DEG
Test Speed: HIGH
Temperature: 25.3DEG
Operators: LPC
Test Date: 2021-11-30

γ Range: 0 - 180DEG
 γ Interval: 1.0DEG
Test System: EVERFINE GO-2000B_V1 SYSTEM V2.0.362
Humidity: 65.0%
Test Distance: 9.200m [K=1.0000]
Remarks:

LUMINOUS DISTRIBUTION INTENSITY DATA

Test:U:24.00V I:0.2336A P:5.606W PF:1.000 Freq:0Hz Lamp Flux:18.1649x1 lm																	
NAME: SF21-24V-3528-72-B									TYPE: 硅胶						WEIGHT:		
SPEC.:									DIM.: 28mm*11.5mm						SERIAL No.:2021113005		
MFR.: OLYMPIA									SUR.:1*0.016						Shielding Angle:		

Table--1

UNIT: cd

C (DEG) γ (DEG)	0	30	60	90	120	150	180	210	240	270	300	330						
0	3.49	3.49	3.41	3.36	3.40	3.37	3.49	3.49	3.41	3.36	3.40	3.37						
5	3.50	3.49	3.41	3.35	3.38	3.34	3.44	3.48	3.37	3.36	3.40	3.42						
10	3.49	3.46	3.42	3.30	3.30	3.24	3.44	3.42	3.33	3.34	3.38	3.43						
15	3.46	3.41	3.40	3.21	3.20	3.13	3.35	3.36	3.23	3.27	3.34	3.43						
20	3.41	3.35	3.31	3.09	3.06	3.01	3.29	3.26	3.09	3.15	3.25	3.42						
25	3.34	3.28	3.19	2.94	2.91	2.87	3.21	3.15	2.94	2.99	3.14	3.40						
30	3.25	3.19	3.05	2.76	2.73	2.78	3.10	3.02	2.77	2.79	3.00	3.33						
35	3.14	3.09	2.89	2.56	2.54	2.69	3.00	2.87	2.58	2.59	2.85	3.26						
40	3.02	2.93	2.71	2.35	2.35	2.60	2.92	2.76	2.37	2.36	2.68	3.18						
45	2.95	2.79	2.52	2.11	2.18	2.47	2.86	2.67	2.17	2.12	2.52	3.05						
50	2.88	2.65	2.33	1.83	1.99	2.36	2.78	2.56	1.98	1.86	2.33	2.92						
55	2.79	2.55	2.13	1.57	1.78	2.22	2.70	2.45	1.80	1.59	2.14	2.77						
60	2.69	2.45	1.91	1.30	1.59	2.10	2.61	2.32	1.60	1.30	1.93	2.63						
65	2.59	2.32	1.69	1.01	1.41	1.98	2.53	2.21	1.42	1.01	1.72	2.54						
70	2.49	2.20	1.49	0.73	1.23	1.84	2.42	2.09	1.25	0.71	1.51	2.44						
75	2.39	2.07	1.33	0.45	1.07	1.73	2.31	1.97	1.09	0.44	1.32	2.31						
80	2.27	1.96	1.16	0.20	0.95	1.63	2.21	1.85	0.93	0.20	1.17	2.20						
85	2.16	1.84	1.03	0.02	0.84	1.52	2.09	1.74	0.83	0.03	1.03	2.10						
90	2.03	1.72	0.94	0.01	0.77	1.43	1.97	1.64	0.76	0.00	0.93	1.99						
95	1.92	1.63	0.88	0.01	0.71	1.34	1.88	1.54	0.69	0.00	0.86	1.88						
100	1.81	1.52	0.83	0.02	0.68	1.19	1.75	1.37	0.67	0.00	0.80	1.72						
105	1.66	1.36	0.78	0.02	0.64	1.12	1.60	1.30	0.62	0.00	0.77	1.59						
110	1.57	1.32	0.76	0.02	0.51	1.09	1.52	1.26	0.55	0.00	0.77	1.50						
115	1.48	1.25	0.75	0.03	0.46	1.01	1.44	1.20	0.51	0.00	0.76	1.39						
120	1.40	1.20	0.69	0.04	0.44	0.89	1.30	1.11	0.48	0.00	0.69	1.33						
125	1.32	1.15	0.55	0.05	0.43	0.83	1.23	1.03	0.47	0.00	0.68	1.29						
130	1.25	1.09	0.51	0.07	0.41	0.78	1.14	0.86	0.46	0.00	0.63	1.24						
135	1.17	0.95	0.48	0.07	0.37	0.71	1.05	0.87	0.42	0.03	0.60	1.13						
140	1.09	0.80	0.47	0.07	0.33	0.62	1.00	0.84	0.38	0.04	0.55	0.96						
145	1.00	0.65	0.45	0.07	0.28	0.52	0.88	0.76	0.31	0.04	0.48	0.81						
150	0.92	0.55	0.43	0.07	0.25	0.43	0.82	0.67	0.28	0.04	0.48	0.72						
155	0.81	0.32	0.42	0.07	0.23	0.34	0.71	0.58	0.23	0.05	0.47	0.64						
160	0.66	0.21	0.42	0.07	0.16	0.27	0.59	0.50	0.21	0.07	0.46	0.54						
165	0.48	0.21	0.41	0.07	0.06	0.25	0.51	0.40	0.08	0.10	0.46	0.44						
170	0.17	0.21	0.40	0.07	0.05	0.21	0.15	0.30	0.03	0.12	0.45	0.43						
175	0.14	0.20	0.40	0.07	0.04	0.04	0.09	0.14	0.03	0.13	0.44	0.42						
180	0.03	0.03	0.05	0.06	0.12	0.09	0.04	0.04	0.03	0.13	0.16	0.10						

C Range: 0 - 360DEG
C Interval: 30.0DEG
Test Speed: HIGH
Temperature:25.3DEG
Operators:LPC
Test Date:2021-11-30

γ Range: 0 - 180DEG
γ Interval: 1.0DEG
Test System:EVERFINE GO-2000B_V1 SYSTEM V2.0.362
Humidity:65.0%
Test Distance:9.200m [K=1.0000]
Remarks:

Photometric Data Table [cd]

G/C	0.0	30.0	60.0	90.0	120.0	150.0	180.0	210.0	240.0	270.0
0.0	3.488	3.493	3.412	3.362	3.402	3.372	3.488	3.493	3.412	3.362
3.0	3.498	3.493	3.412	3.357	3.402	3.337	3.453	3.498	3.407	3.367
6.0	3.494	3.488	3.415	3.337	3.362	3.312	3.443	3.468	3.362	3.356
9.0	3.490	3.467	3.417	3.317	3.317	3.257	3.437	3.438	3.327	3.345
12.0	3.478	3.432	3.410	3.262	3.272	3.196	3.432	3.398	3.277	3.327
15.0	3.458	3.412	3.398	3.211	3.197	3.131	3.352	3.357	3.231	3.267
18.0	3.428	3.377	3.347	3.141	3.126	3.060	3.327	3.297	3.146	3.197
21.0	3.403	3.337	3.287	3.065	3.036	3.000	3.277	3.237	3.065	3.116
24.0	3.347	3.297	3.222	2.975	2.940	2.915	3.251	3.171	2.975	3.016
27.0	3.302	3.247	3.141	2.869	2.840	2.844	3.171	3.101	2.874	2.915
30.0	3.247	3.186	3.051	2.759	2.734	2.784	3.101	3.016	2.769	2.790
33.0	3.186	3.116	2.961	2.643	2.619	2.729	3.040	2.930	2.658	2.679
36.0	3.116	3.045	2.860	2.527	2.503	2.683	2.965	2.850	2.538	2.558
39.0	3.041	2.965	2.754	2.382	2.383	2.608	2.925	2.784	2.417	2.413
42.0	2.985	2.885	2.639	2.236	2.272	2.543	2.885	2.739	2.291	2.272
45.0	2.950	2.789	2.523	2.105	2.176	2.467	2.860	2.674	2.166	2.121
48.0	2.915	2.699	2.413	1.939	2.061	2.397	2.829	2.609	2.055	1.960
51.0	2.865	2.618	2.292	1.789	1.946	2.317	2.774	2.543	1.954	1.800
54.0	2.820	2.568	2.172	1.628	1.830	2.241	2.719	2.473	1.834	1.634
57.0	2.754	2.503	2.041	1.472	1.714	2.161	2.678	2.403	1.728	1.473
60.0	2.694	2.447	1.905	1.296	1.594	2.100	2.613	2.322	1.598	1.302
63.0	2.639	2.362	1.780	1.125	1.493	2.030	2.548	2.257	1.487	1.126
66.0	2.578	2.292	1.649	0.9494	1.377	1.970	2.488	2.176	1.397	0.9454
69.0	2.513	2.206	1.533	0.7885	1.267	1.884	2.447	2.106	1.271	0.7694
72.0	2.458	2.141	1.428	0.6176	1.166	1.804	2.377	2.041	1.161	0.5987
75.0	2.388	2.070	1.327	0.4469	1.071	1.734	2.312	1.970	1.085	0.4377
78.0	2.317	2.000	1.227	0.2911	0.9954	1.668	2.246	1.895	0.9947	0.2869
81.0	2.252	1.935	1.136	0.1554	0.9249	1.603	2.191	1.830	0.9292	0.1611
84.0	2.177	1.864	1.061	0.0450	0.8596	1.563	2.116	1.759	0.8441	0.0606
87.0	2.106	1.794	0.9904	0.0101	0.8093	1.487	2.045	1.699	0.7888	0.0000
90.0	2.031	1.724	0.9449	0.0101	0.7690	1.427	1.970	1.639	0.7637	0
93.0	1.965	1.663	0.8998	0.0101	0.7288	1.377	1.909	1.583	0.7035	0
96.0	1.900	1.608	0.8696	0.0101	0.7087	1.322	1.834	1.528	0.6785	0
99.0	1.830	1.568	0.8445	0.0101	0.6985	1.276	1.779	1.458	0.6734	0
102.0	1.724	1.402	0.8173	0.0201	0.6785	1.151	1.663	1.327	0.6482	0
105.0	1.664	1.362	0.7813	0.0201	0.6385	1.121	1.603	1.297	0.6176	0
108.0	1.608	1.322	0.7653	0.0201	0.5328	1.091	1.558	1.282	0.5576	0
111.0	1.558	1.291	0.7592	0.0251	0.5029	1.090	1.513	1.241	0.5426	0
114.0	1.508	1.251	0.7531	0.0302	0.4729	1.030	1.457	1.216	0.5225	0
117.0	1.453	1.231	0.7290	0.0352	0.4372	0.9447	1.407	1.161	0.4974	0
120.0	1.402	1.196	0.6937	0.0402	0.4359	0.8895	1.301	1.111	0.4787	0.0000
123.0	1.362	1.166	0.5934	0.0453	0.4345	0.8543	1.261	1.061	0.4730	0
126.0	1.312	1.136	0.5478	0.0553	0.4332	0.8342	1.206	1.010	0.4665	0
129.0	1.262	1.096	0.5228	0.0604	0.4273	0.7855	1.156	0.9253	0.4596	0
132.0	1.211	1.060	0.5026	0.0653	0.4022	0.7617	1.105	0.8814	0.4472	0.0100
135.0	1.171	0.9497	0.4825	0.0653	0.3720	0.7085	1.050	0.8730	0.4220	0.0250
138.0	1.121	0.8592	0.4725	0.0653	0.3518	0.6682	1.015	0.8645	0.3869	0.0352
141.0	1.066	0.7736	0.4624	0.0653	0.3167	0.6031	0.9596	0.8393	0.3748	0.0402
144.0	1.020	0.6683	0.4523	0.0653	0.2816	0.5426	0.8049	0.7792	0.3464	0.0402
147.0	0.9652	0.6230	0.4393	0.0653	0.2564	0.4873	0.8544	0.7289	0.2964	0.0402
150.0	0.9199	0.5476	0.4272	0.0653	0.2463	0.4320	0.8239	0.6736	0.2812	0.0402
153.0	0.8647	0.4317	0.4247	0.0653	0.2387	0.3668	0.7587	0.6234	0.2660	0.0452
156.0	0.7844	0.2760	0.4209	0.0653	0.2312	0.3114	0.6834	0.5580	0.2211	0.0552
159.0	0.6888	0.2181	0.4172	0.0653	0.1744	0.2764	0.6228	0.5126	0.2160	0.0653
162.0	0.5984	0.2107	0.4135	0.0653	0.1176	0.2612	0.5376	0.4625	0.2010	0.0753
165.0	0.4779	0.2123	0.4097	0.0653	0.0608	0.2450	0.5073	0.4022	0.0799	0.0955
168.0	0.1835	0.2139	0.4060	0.0653	0.0453	0.2268	0.4094	0.3369	0.0251	0.1141
171.0	0.1609	0.2155	0.4022	0.0653	0.0452	0.0402	0.1304	0.2816	0.0251	0.1196
174.0	0.1358	0.2110	0.3985	0.0653	0.0403	0.0352	0.0954	0.1713	0.0251	0.1251
177.0	0.1107	0.1904	0.3920	0.0603	0.0402	0.0352	0.0703	0.0656	0.0251	0.1307
180.0	0.0302	0.0251	0.0452	0.0553	0.1156	0.0854	0.0402	0.0402	0.0302	0.1307
G/C	300.0	330.0								
0.0	3.402	3.372								
3.0	3.402	3.417								
6.0	3.402	3.423								
9.0	3.372	3.429								
12.0	3.357	3.434								
15.0	3.337	3.429								
18.0	3.277	3.423								
21.0	3.231	3.418								
24.0	3.176	3.413								
27.0	3.095	3.372								
30.0	3.000	3.332								

C Range: 0 - 360DEG
 C Interval: 30.0DEG
 Test Speed: HIGH
 Temperature: 25.3DEG
 Operators: LPC
 Test Date: 2021-11-30

γ Range: 0 - 180DEG
 γ Interval: 1.0DEG
 Test System: EVERFINE GO-2000B_V1 SYSTEM V2.0.362
 Humidity: 65.0%
 Test Distance: 9.200m [K=1.0000]
 Remarks:

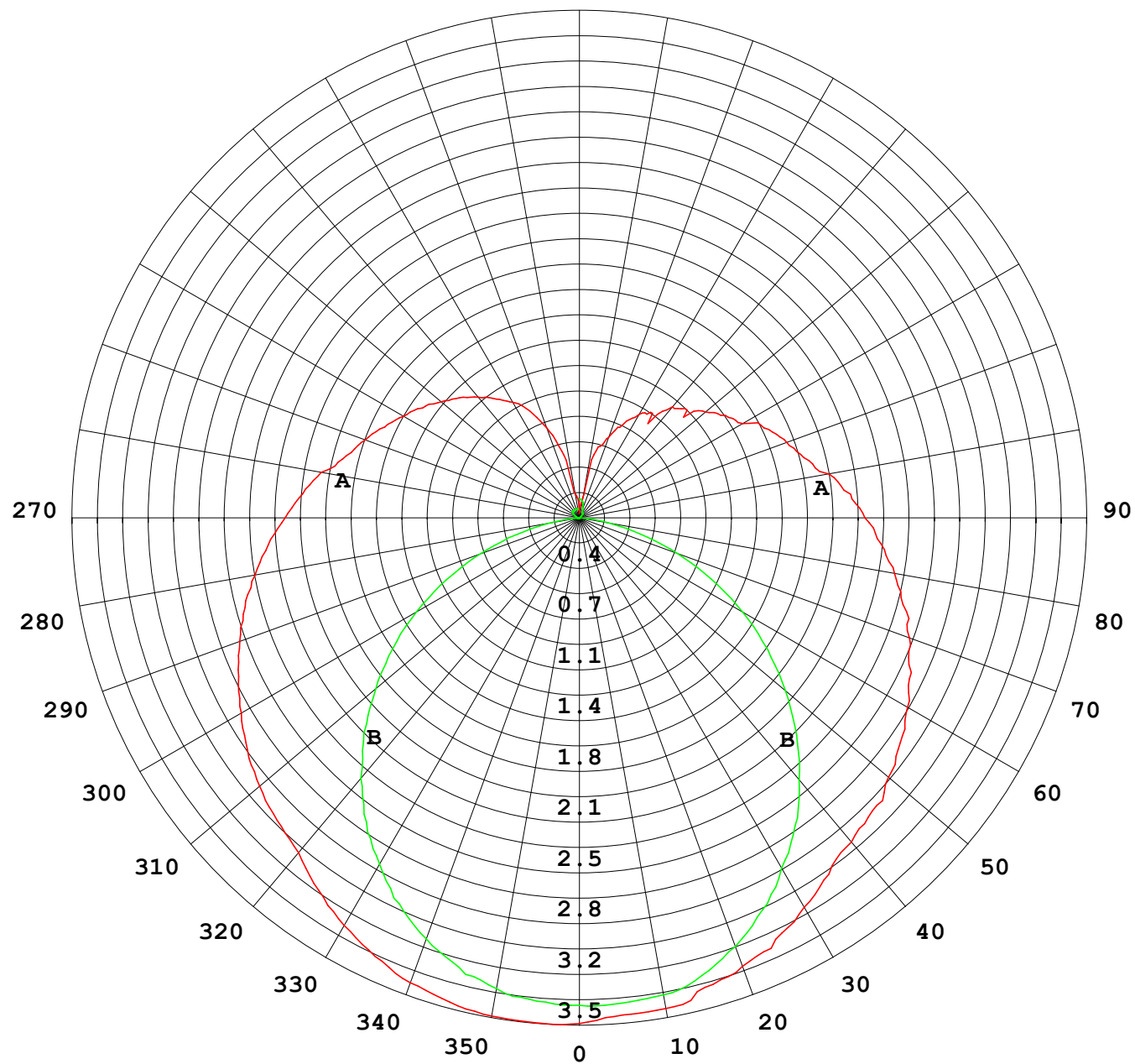
Photometric Data Table [cd]

33.0	2.914	3.292
36.0	2.819	3.242
39.0	2.713	3.192
42.0	2.608	3.121
45.0	2.517	3.051
48.0	2.397	2.975
51.0	2.291	2.890
54.0	2.181	2.805
57.0	2.055	2.709
60.0	1.929	2.634
63.0	1.794	2.578
66.0	1.668	2.523
69.0	1.538	2.458
72.0	1.427	2.392
75.0	1.322	2.312
78.0	1.241	2.242
81.0	1.135	2.181
84.0	1.080	2.116
87.0	0.9947	2.046
90.0	0.9297	1.990
93.0	0.8844	1.925
96.0	0.8493	1.865
99.0	0.8339	1.799
102.0	0.7839	1.618
105.0	0.7723	1.588
108.0	0.7700	1.533
111.0	0.7677	1.483
114.0	0.7653	1.413
117.0	0.7533	1.372
120.0	0.6936	1.332
123.0	0.6874	1.302
126.0	0.6784	1.287
129.0	0.6381	1.257
132.0	0.6173	1.201
135.0	0.6000	1.131
138.0	0.5828	1.036
141.0	0.5376	0.8803
144.0	0.4924	0.8395
147.0	0.4800	0.7741
150.0	0.4764	0.7188
153.0	0.4729	0.6736
156.0	0.4693	0.6134
159.0	0.4657	0.5580
162.0	0.4621	0.4977
165.0	0.4585	0.4424
168.0	0.4561	0.4307
171.0	0.4541	0.4262
174.0	0.4522	0.4217
177.0	0.4170	0.4171
180.0	0.1558	0.1005

C Range: 0 - 360DEG
C Interval: 30.0DEG
Test Speed: HIGH
Temperature:25.3DEG
Operators:LPC
Test Date:2021-11-30

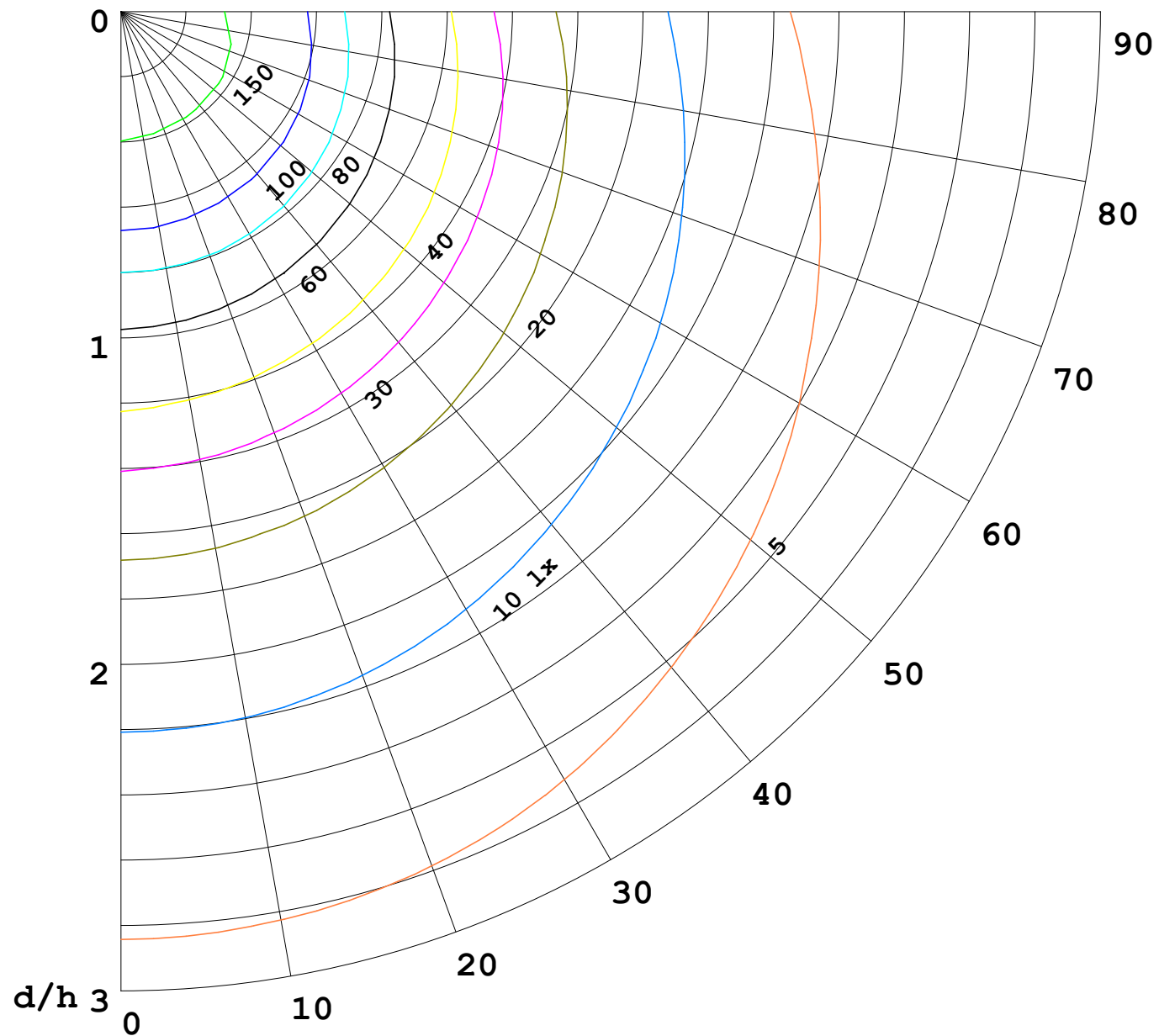
γ Range: 0 - 180DEG
γ Interval: 1.0DEG
Test System:EVERFINE GO-2000B_V1 SYSTEM V2.0.362
Humidity:65.0%
Test Distance:9.200m [K=1.0000]
Remarks:

I (cd)



1000 lm

$\kappa = 1$



F = 5000 lm
 K = 0.7
 Hcc = 0.0 m
 Hfc = 0.0 m
 Eave = 100 lx

	Pcc	Pw	Pfc
—	70	50	30
—	50	30	20

