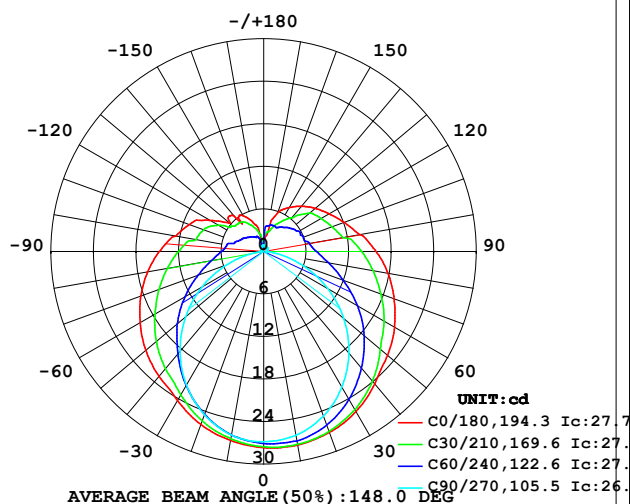


LUMINAIRE PHOTOMETRIC TEST REPORT

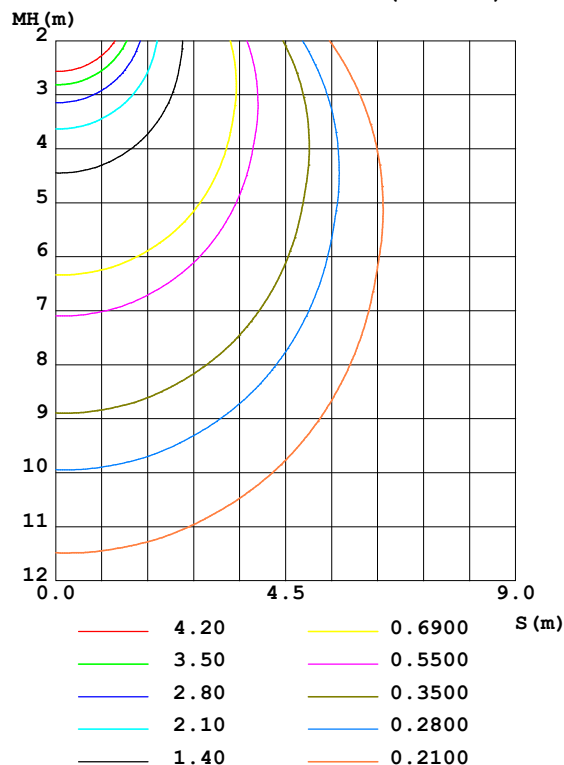
Test:U:24.00V I:0.2562A P:6.149W PF:1.000 Freq:0Hz Lamp Flux:141.692x1 lm		
NAME: SF21-24V-3528-72-2200-80	TYPE: 硅胶	WEIGHT:
SPEC.:	DIM.: 28mm*11.5mm	SERIAL No.:2021112907
MFR.: OLYMPIA	SUR.:1*0.016	Shielding Angle:

DATA OF LAMP		PHOTOMETRIC DATA Eff: 23.04 lm/W			
MODEL	3528	I _{max} (cd)	27.77	S/MH (C0/180)	1.32
NOMINAL POWER (W)	5	LOR (%)	100.0	S/MH (C90/270)	1.21
RATED VOLTAGE (V)	24	TOTAL FLUX (lm)	141.69	η UP, DN (C0-180)	13.0, 36.7
NOMINAL FLUX (lm)	141.692	CIE CLASS	SEMI-D.	η UP, DN (C180-360)	13.2, 37.1
LAMPS INSIDE	1	η up (%)	26.2	CIBSE SHR NOM	1.50
TEST VOLTAGE (V)	24.0	η down (%)	73.8	CIBSE SHR MAX	1.55

LUMINOUS INTENSITY DISTRIBUTION DIAGRAM



C0 PLANE ISOLUX DIAGRAM (UNIT:lx)



C Range: 0 - 360DEG
C Interval: 30.0DEG
Test Speed: HIGH
Temperature: 25.3DEG
Operators: LPC
Test Date: 2021-11-29

γ Range: 0 - 180DEG
γ Interval: 1.0DEG
Test System: EVERFINE GO-2000B_V1 SYSTEM V2.0.362
Humidity: 65.0%
Test Distance: 9.200m [K=1.0000]
Remarks:

ZONAL FLUX DIAGRAM

ZONAL FLUX DIAGRAM:

γ	C0	C45	C90	C135	C180	C225	C270	C315	γ	Φ zone	Φ total	%lum, lamp
10	27.73	27.37	26.32	25.81	27.05	26.54	26.29	27.08	0- 10	2.572	2.572	1.82,1.82
20	27.15	26.53	24.68	23.97	25.97	24.92	24.50	26.43	10- 20	7.406	9.978	7.04,7.04
30	26.07	24.92	22.10	21.83	24.30	22.62	21.80	25.04	20- 30	11.35	21.33	15.1,15.1
40	24.39	22.67	18.70	19.53	23.00	20.21	18.36	23.20	30- 40	14.08	35.41	25,25
50	22.82	20.00	14.74	17.11	21.71	17.83	14.39	20.83	40- 50	15.50	50.91	35.9,35.9
60	21.32	17.44	10.45	14.53	20.12	15.27	10.04	18.09	50- 60	15.61	66.52	46.9,46.9
70	19.59	14.74	6.012	12.03	18.44	12.79	5.572	15.53	60- 70	14.55	81.07	57.2,57.2
80	17.80	12.49	1.967	9.858	16.63	10.65	1.621	13.19	70- 80	12.75	93.82	66.2,66.2
90	15.86	10.63	0.4010	8.049	14.72	8.986	0.2863	11.31	80- 90	10.80	104.6	73.8,73.8
100	13.78	8.976	0.4374	6.694	12.64	7.499	0.3093	9.474	90-100	9.269	113.9	80.4,80.4
110	12.06	8.110	0.4817	5.659	11.18	6.581	0.3671	8.718	100-110	7.663	121.5	85.8,85.8
120	10.66	7.561	0.5629	4.694	8.812	5.486	0.3819	7.928	110-120	6.379	127.9	90.3,90.3
130	9.495	6.766	0.6434	4.174	6.223	4.323	0.5277	7.149	120-130	4.980	132.9	93.8,93.8
140	8.344	5.340	0.6886	3.485	6.539	4.033	0.6734	5.460	130-140	3.739	136.6	96.4,96.4
150	7.158	4.385	0.7355	2.794	5.823	3.483	0.7890	4.420	140-150	2.543	139.2	98.2,98.2
160	5.837	3.752	0.7456	2.301	4.315	2.767	0.8443	3.913	150-160	1.583	140.8	99.4,99.4
170	2.363	3.231	0.7475	1.034	1.547	1.602	0.8744	3.764	160-170	0.7447	141.5	99.9,99.9
180	0.7036	0.6835	0.7187	0.8292	0.6986	0.6760	0.9750	0.8393	170-180	0.1740	141.7	100,100
DEG	LUMINOUS INTENSITY:cd									UNIT:lm		

Conical surface Flux(90deg): 43.065 lm

%lum = 30.4%

%lamp = 30.4%

Conical surface Flux(120deg): 66.516 lm

%lum = 46.9%

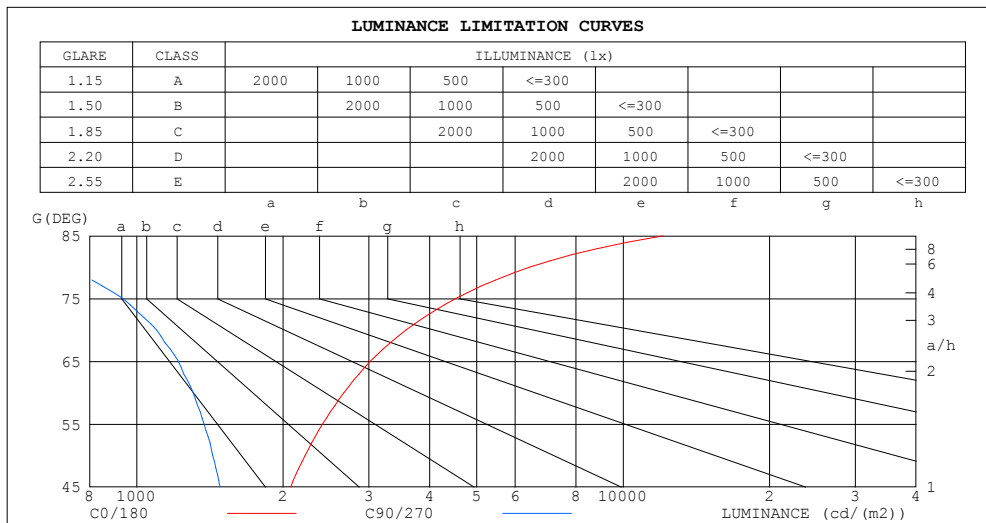
%lamp = 46.9%

C Range: 0 - 360DEG
 C Interval: 30.0DEG
 Test Speed: HIGH
 Temperature:25.3DEG
 Operators:LPC
 Test Date:2021-11-29

γ Range: 0 - 180DEG
 γ Interval: 1.0DEG
 Test System:EVERFINE GO-2000B_V1 SYSTEM V2.0.362
 Humidity:65.0%
 Test Distance:9.200m [K=1.0000]
 Remarks:

LUMINANCE LIMITATION CURVES

Test:U:24.00V I:0.2562A P:6.149W PF:1.000 Freq:0Hz Lamp Flux:141.692x1 lm		
NAME: SF21-24V-3528-72-2200-80	TYPE: 硅胶	WEIGHT:
SPEC.:	DIM.: 28mm*11.5mm	SERIAL No.:2021112907
MFR.: OLYMPIA	SUR.:1*0.016	Shielding Angle:



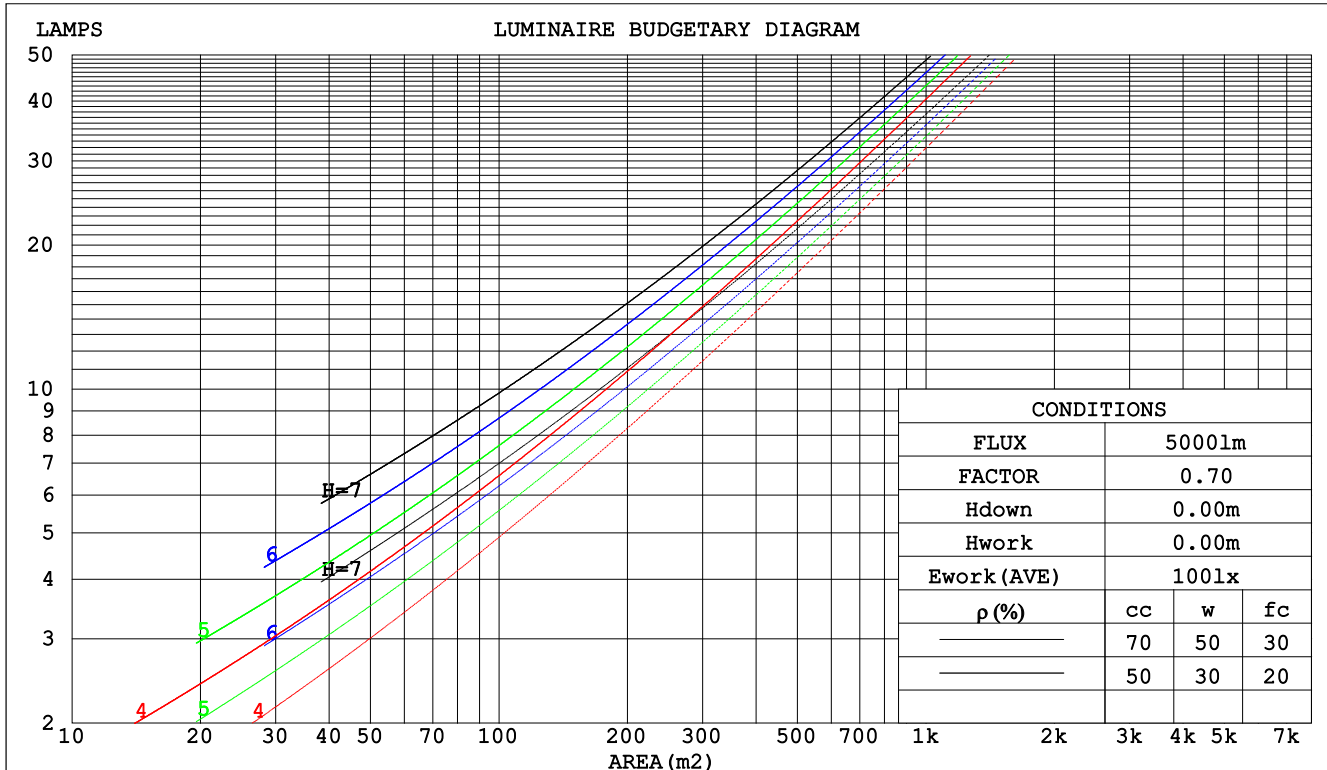
C Range: 0 - 360DEG
C Interval: 30.0DEG
Test Speed: HIGH
Temperature:25.3DEG
Operators:LPC
Test Date:2021-11-29

γ Range: 0 - 180DEG
γ Interval: 1.0DEG
Test System:EVERFINE GO-2000B_V1 SYSTEM V2.0.362
Humidity:65.0%
Test Distance:9.200m [K=1.0000]
Remarks:

CU AND LUMINAIRE BUDGETARY ESTIMATE DIAGRAM

Test:U:24.00V I:0.2562A P:6.149W PF:1.000 Freq:0Hz Lamp Flux:141.692x1 lm		
NAME: SF21-24V-3528-72-2200-80	TYPE: 硅胶	WEIGHT:
SPEC.:	DIM.: 28mm*11.5mm	SERIAL No.:2021112907
MFR.: OLYMPIA	SUR.:1*0.016	Shielding Angle:

pcc	80%			70%			50%			30%			10%			0
pw	50%	30%	10%	50%	30%	10%	50%	30%	10%	50%	30%	10%	50%	30%	10%	0
pfc	20%			20%			20%			20%			20%			0
RCR	RCR:Room Cavity Ratio						Coefficients of Utilization(CU)									
0.0	1.13	1.13	1.13	1.07	1.07	1.07	.97	.97	.97	.87	.87	.87	.78	.78	.78	.74
1.0	.94	.88	.84	.89	.84	.80	.80	.76	.72	.71	.68	.66	.64	.61	.59	.55
2.0	.80	.72	.66	.76	.69	.63	.68	.62	.58	.61	.56	.52	.54	.51	.47	.44
3.0	.69	.61	.53	.66	.58	.51	.59	.52	.47	.53	.47	.43	.47	.43	.39	.36
4.0	.61	.52	.44	.58	.49	.43	.52	.45	.39	.47	.41	.36	.41	.37	.33	.30
5.0	.54	.45	.38	.51	.43	.36	.46	.39	.34	.42	.36	.31	.37	.32	.28	.25
6.0	.48	.39	.33	.46	.38	.31	.42	.34	.29	.37	.31	.27	.33	.28	.24	.22
7.0	.44	.35	.28	.42	.33	.27	.38	.31	.25	.34	.28	.23	.30	.25	.22	.19
8.0	.40	.31	.25	.38	.30	.24	.34	.27	.22	.31	.25	.21	.28	.23	.19	.17
9.0	.36	.28	.22	.35	.27	.22	.31	.25	.20	.29	.23	.19	.26	.21	.17	.15
10.0	.33	.25	.20	.32	.24	.19	.29	.23	.18	.26	.21	.17	.24	.19	.16	.14



C Range: 0 - 360DEG
 C Interval: 30.0DEG
 Test Speed: HIGH
 Temperature:25.3DEG
 Operators:LPC
 Test Date:2021-11-29

γ Range: 0 - 180DEG
 γ Interval: 1.0DEG
 Test System:EVERFINE GO-2000B_V1 SYSTEM V2.0.362
 Humidity:65.0%
 Test Distance:9.200m [K=1.0000]
 Remarks:

WEC AND CCEC

Test:U:24.00V I:0.2562A P:6.149W PF:1.000 Freq:0Hz Lamp Flux:141.692x1 lm		
NAME: SF21-24V-3528-72-2200-80	TYPE: 硅胶	WEIGHT:
SPEC.:	DIM.: 28mm*11.5mm	SERIAL No.:2021112907
MFR.: OLYMPIA	SUR.:1*0.016	Shielding Angle:

pcc	80%			70%			50%			30%			10%			0	
pw	50%	30%	10%	50%	30%	10%	50%	30%	10%	50%	30%	10%	50%	30%	10%	0	
pfc	20%			20%			20%			20%			20%			0	
RCR	RCR:Room Cavity Ratio						Wall Exitance Coeffcients(WEC)										
0.0																	
1.0	.384	.218	.069	.369	.210	.067	.340	.195	.062	.314	.181	.058	.290	.168	.054		
2.0	.330	.181	.056	.317	.174	.054	.291	.162	.050	.267	.150	.047	.245	.139	.044		
3.0	.293	.156	.047	.280	.150	.045	.257	.139	.042	.235	.129	.040	.215	.119	.037		
4.0	.263	.137	.040	.252	.132	.039	.231	.122	.037	.211	.113	.034	.192	.104	.032		
5.0	.239	.122	.035	.229	.117	.034	.209	.109	.032	.191	.101	.030	.174	.093	.028		
6.0	.219	.110	.031	.210	.106	.030	.192	.098	.029	.175	.091	.027	.159	.084	.025		
7.0	.202	.100	.028	.193	.096	.027	.177	.089	.026	.162	.083	.024	.147	.076	.022		
8.0	.187	.092	.026	.179	.088	.025	.164	.082	.023	.150	.076	.022	.137	.070	.020		
9.0	.175	.084	.024	.167	.081	.023	.153	.076	.021	.140	.070	.020	.128	.065	.019		
10.0	.163	.078	.022	.157	.076	.021	.144	.070	.020	.131	.065	.019	.120	.060	.017		

pcc	80%			70%			50%			30%			10%			0
pw	50%	30%	10%	50%	30%	10%	50%	30%	10%	50%	30%	10%	50%	30%	10%	0
pfc	20%			20%			20%			20%			20%			0
RCR	RCR:Room Cavity Ratio						Ceiling Cavity Exitance Coefficients(CCEC)									
0.0	.390	.390	.390	.333	.333	.333	.227	.227	.227	.131	.131	.131	.042	.042	.042	
1.0	.386	.356	.330	.331	.306	.284	.226	.210	.196	.130	.122	.114	.042	.039	.037	
2.0	.380	.334	.296	.325	.288	.256	.223	.199	.178	.129	.116	.105	.041	.037	.034	
3.0	.372	.318	.275	.319	.274	.238	.219	.191	.167	.127	.111	.098	.041	.036	.032	
4.0	.365	.306	.261	.313	.264	.226	.215	.184	.159	.124	.108	.094	.040	.035	.031	
5.0	.357	.296	.251	.307	.256	.218	.211	.179	.154	.122	.105	.091	.039	.034	.030	
6.0	.350	.288	.244	.301	.250	.213	.207	.175	.150	.120	.103	.089	.039	.034	.030	
7.0	.343	.282	.239	.295	.244	.208	.204	.171	.148	.118	.101	.088	.038	.033	.029	
8.0	.336	.276	.235	.289	.240	.205	.200	.168	.145	.116	.099	.087	.038	.033	.029	
9.0	.330	.272	.232	.284	.236	.202	.197	.166	.144	.115	.098	.086	.037	.032	.028	
10.0	.324	.267	.230	.280	.232	.200	.194	.163	.142	.113	.097	.085	.037	.032	.028	

C Range: 0 - 360DEG
 C Interval: 30.0DEG
 Test Speed: HIGH
 Temperature:25.3DEG
 Operators:LPC
 Test Date:2021-11-29

γ Range: 0 - 180DEG
 γ Interval: 1.0DEG
 Test System:EVERFINE GO-2000B_V1 SYSTEM V2.0.362
 Humidity:65.0%
 Test Distance:9.200m [K=1.0000]
 Remarks:

UGR(Unified Glare Rating) Table

Test:U:24.00V I:0.2562A P:6.149W PF:1.000 Freq:0Hz Lamp Flux:141.692x1 lm											
NAME: SF21-24V-3528-72-2200-80						TYPE:硅胶		WEIGHT:			
SPEC.:						DIM.: 28mm*11.5mm		SERIAL No.:2021112907			
MFR.: OLYMPIA						SUR.:1*0.016		Shielding Angle:			
ceiling/cavity	0.7	0.7	0.5	0.5	0.3	0.7	0.7	0.5	0.5	0.3	
walls	0.5	0.3	0.5	0.3	0.3	0.5	0.3	0.5	0.3	0.3	
working plane	0.2	0.2	0.2	0.2	0.2	0.2	0.2	0.2	0.2	0.2	
Room dimensions		Viewed crosswise					Viewed endwise				
x = 2H y = 2H	21.7	23.0	22.3	23.6	24.3	19.2	20.5	19.8	21.1	21.8	
	3H	24.6	25.7	25.2	26.4	27.1	20.7	21.8	21.3	22.5	23.2
	4H	26.2	27.3	26.8	27.9	28.7	21.2	22.3	21.9	23.0	23.8
	6H	28.0	29.0	28.6	29.7	30.5	21.6	22.6	22.2	23.3	24.1
	8H	29.0	30.0	29.6	30.7	31.5	21.6	22.7	22.3	23.3	24.2
	12H	30.1	31.1	30.8	31.8	32.6	21.7	22.6	22.4	23.3	24.2
4H	2H	22.3	23.4	22.9	24.1	24.8	20.5	21.6	21.2	22.3	23.1
	3H	25.4	26.4	26.1	27.1	27.9	22.3	23.3	23.0	24.0	24.8
	4H	27.2	28.1	27.9	28.8	29.7	23.1	24.0	23.8	24.7	25.6
	6H	29.2	30.0	29.9	30.7	31.6	23.7	24.5	24.5	25.3	26.2
	8H	30.3	31.1	31.1	31.8	32.7	23.9	24.7	24.7	25.5	26.4
	12H	31.6	32.3	32.4	33.1	34.0	24.1	24.8	24.8	25.5	26.5
8H	4H	27.5	28.3	28.3	29.0	29.9	24.4	25.2	25.2	25.9	26.8
	6H	29.9	30.5	30.7	31.3	32.2	25.5	26.2	26.3	26.9	27.9
	8H	31.2	31.8	32.0	32.6	33.5	26.0	26.6	26.8	27.4	28.3
	12H	32.8	33.3	33.6	34.1	35.1	26.4	26.9	27.2	27.7	28.7
12H	4H	27.6	28.2	28.3	29.0	29.9	24.9	25.5	25.6	26.3	27.2
	6H	30.0	30.6	30.8	31.4	32.3	26.2	26.8	27.0	27.6	28.6
	8H	31.5	32.0	32.3	32.8	33.8	26.9	27.4	27.8	28.3	29.2
Variations with the observer position at spacings:											
S = 1.0H	+ 0.1 / - 0.1					+ 0.1 / - 0.1					
1.5H	+ 0.2 / - 0.3					+ 0.2 / - 0.3					
2.0H	+ 0.3 / - 0.3					+ 0.3 / - 0.4					

CIE Pub.117, 141.7 lm Total Lamp Luminous Flux Correct (8log(F/F0) = -6.8)

C Range: 0 - 360DEG
C Interval: 30.0DEG
Test Speed: HIGH
Temperature:25.3DEG
Operators:LPC
Test Date:2021-11-29

γ Range: 0 - 180DEG
γ Interval: 1.0DEG
Test System:EVERFINE GO-2000B_V1 SYSTEM V2.0.362
Humidity:65.0%
Test Distance:9.200m [K=1.0000]
Remarks:

UTILIZATION FACTORS TABLE

Test:U:24.00V I:0.2562A P:6.149W PF:1.000 Freq:0Hz Lamp Flux:141.692x1 lm		
NAME: SF21-24V-3528-72-2200-80	TYPE: 硅胶	WEIGHT:
SPEC.:	DIM.: 28mm*11.5mm	SERIAL No.:2021112907
MFR.: OLYMPIA	SUR.:1*0.016	Shielding Angle:

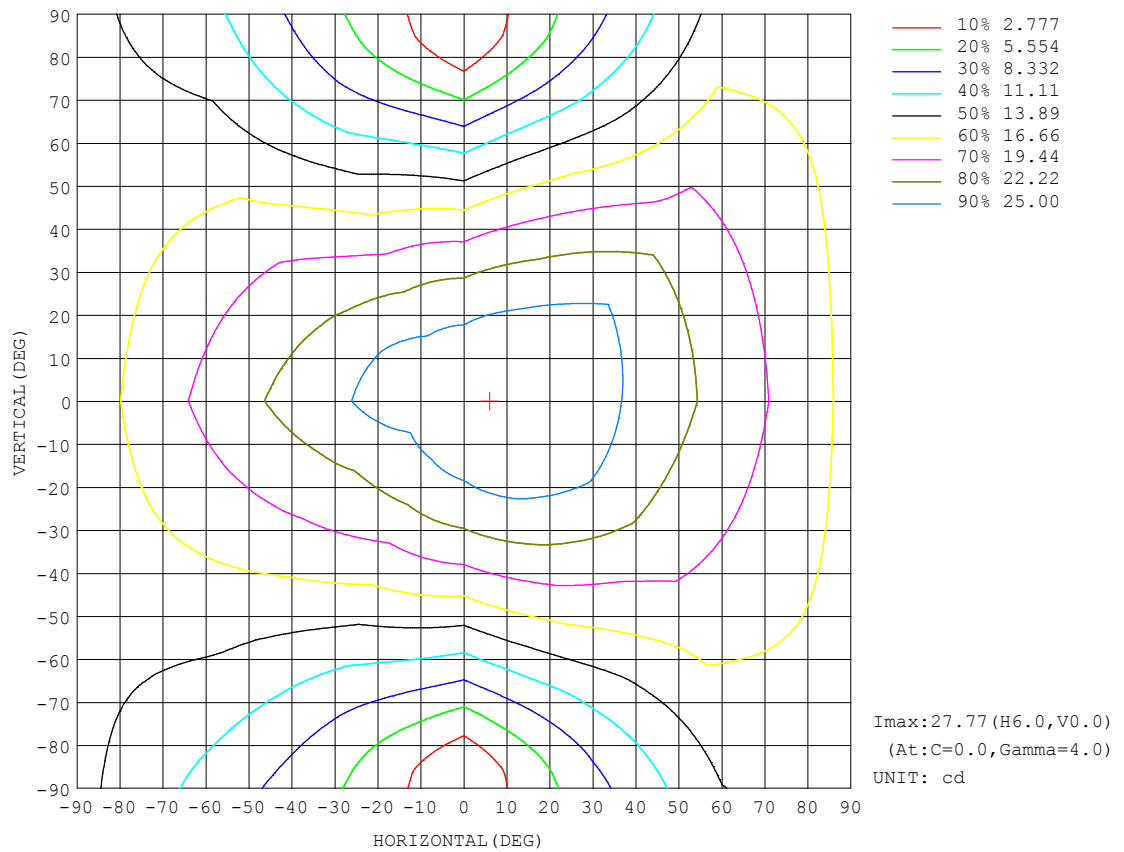
REFLECTANCE										
Ceiling	0.8	0.8	0.8	0.7	0.7	0.7	0.5	0.5	0.5	0
Walls	0.7	0.5	0.3	0.7	0.5	0.3	0.7	0.5	0.3	0
Working plane	0.2	0.2	0.2	0.2	0.2	0.2	0.2	0.2	0.2	0
ROOM INDEX	UTILIZATION FACTORS (PERCENT) $k(RI) \times RCR = 5$									
$k = 0.60$	45	33	26	44	32	26	42	31	25	18
0.80	54	41	33	53	40	33	49	39	32	23
1.00	62	49	40	60	48	40	55	47	38	29
1.25	69	56	47	66	54	46	61	51	44	33
1.50	74	62	53	71	60	51	65	56	49	37
2.00	81	70	61	78	67	60	71	63	56	43
2.50	86	75	67	82	72	65	74	67	61	46
3.00	90	80	72	85	77	70	77	71	65	49
4.00	94	86	79	90	83	76	81	76	71	54
5.00	98	90	84	93	86	81	84	79	74	57
ROOM INDEX	UF(total)									Direct
According to DIN EN 13032-2 2004			Suspended					SHRNOM = 1.25		

C Range: 0 - 360DEG
 C Interval: 30.0DEG
 Test Speed: HIGH
 Temperature:25.3DEG
 Operators:LPC
 Test Date:2021-11-29

γ Range: 0 - 180DEG
 γ Interval: 1.0DEG
 Test System:EVERFINE GO-2000B_V1 SYSTEM V2.0.362
 Humidity:65.0%
 Test Distance:9.200m [K=1.0000]
 Remarks:

ISOCANDELA DIAGRAM

Test:U:24.00V I:0.2562A P:6.149W PF:1.000 Freq:0Hz Lamp Flux:141.692x1 lm		
NAME: SF21-24V-3528-72-2200-80	TYPE: 硅胶	WEIGHT:
SPEC.:	DIM.: 28mm*11.5mm	SERIAL No.:2021112907
MFR.: OLYMPIA	SUR.:1*0.016	Shielding Angle:

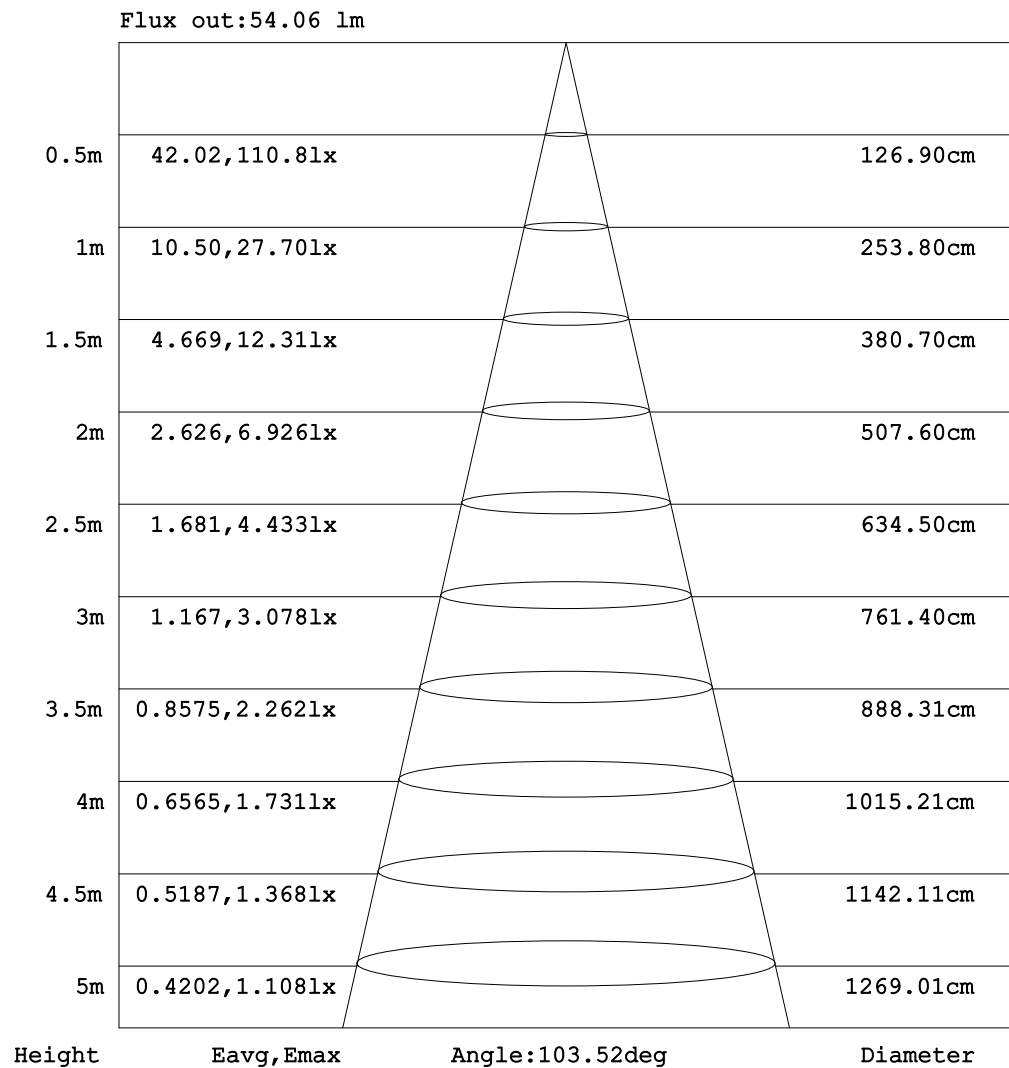


C Range: 0 - 360DEG
C Interval: 30.0DEG
Test Speed: HIGH
Temperature:25.3DEG
Operators:LPC
Test Date:2021-11-29

γ Range: 0 - 180DEG
γ Interval: 1.0DEG
Test System:EVERFINE GO-2000B_V1 SYSTEM V2.0.362
Humidity:65.0%
Test Distance:9.200m [K=1.0000]
Remarks:

AAI Figure

Test:U:24.00V I:0.2562A P:6.149W PF:1.000 Freq:0Hz Lamp Flux:141.692x1 lm		
NAME: SF21-24V-3528-72-2200-80	TYPE: 硅胶	WEIGHT:
SPEC.:	DIM.: 28mm*11.5mm	SERIAL No.:2021112907
MFR.: OLYMPIA	SUR.:1*0.016	Shielding Angle:



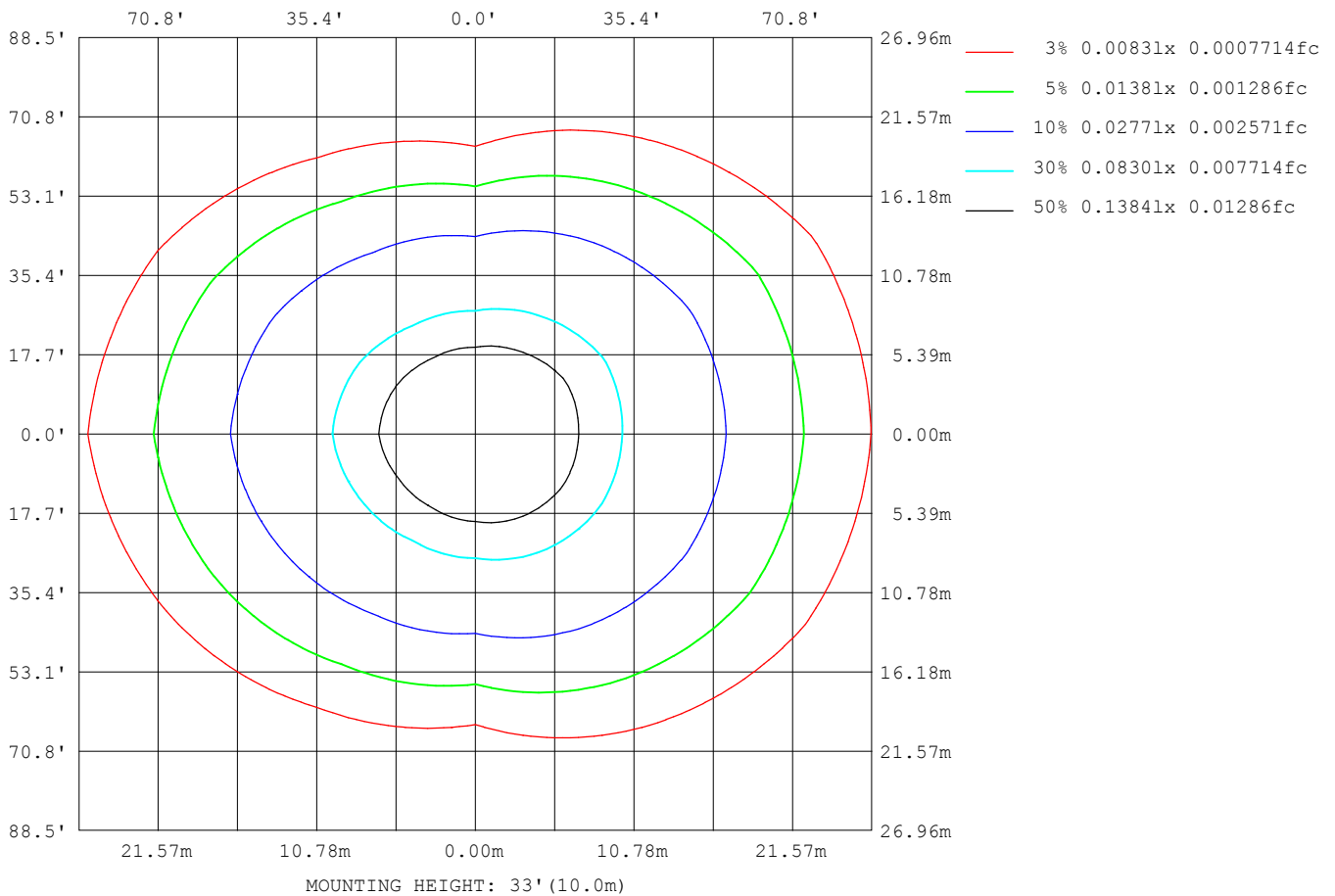
Note: The Curves indicate the illuminated area and the average illumination when the luminaire is at different distance.

C Range: 0 - 360DEG
 C Interval: 30.0DEG
 Test Speed: HIGH
 Temperature: 25.3DEG
 Operators: LPC
 Test Date: 2021-11-29

γ Range: 0 - 180DEG
 γ Interval: 1.0DEG
 Test System: EVERFINE GO-2000B_V1 SYSTEM V2.0.362
 Humidity: 65.0%
 Test Distance: 9.200m [K=1.0000]
 Remarks:

ISOLUX DIAGRAM

Test:U:24.00V I:0.2562A P:6.149W PF:1.000 Freq:0Hz Lamp Flux:141.692x1 lm		
NAME: SF21-24V-3528-72-2200-80	TYPE: 硅胶	WEIGHT:
SPEC.:	DIM.: 28mm*11.5mm	SERIAL No.:2021112907
MFR.: OLYMPIA	SUR.:1*0.016	Shielding Angle:



C Range: 0 - 360DEG
C Interval: 30.0DEG
Test Speed: HIGH
Temperature:25.3DEG
Operators:LPC
Test Date:2021-11-29

γ Range: 0 - 180DEG
 γ Interval: 1.0DEG
Test System:EVERFINE GO-2000B_V1 SYSTEM V2.0.362
Humidity:65.0%
Test Distance:9.200m [K=1.0000]
Remarks:

LED Avg.L Report

Test:U:24.00V I:0.2562A P:6.149W PF:1.000 Freq:0Hz Lamp Flux:141.692x1 lm		
NAME: SF21-24V-3528-72-2200-80	TYPE:硅胶	WEIGHT:
SPEC.:	DIM.: 28mm*11.5mm	SERIAL No.:2021112907
MFR.: OLYMPIA	SUR.:1*0.016	Shielding Angle:

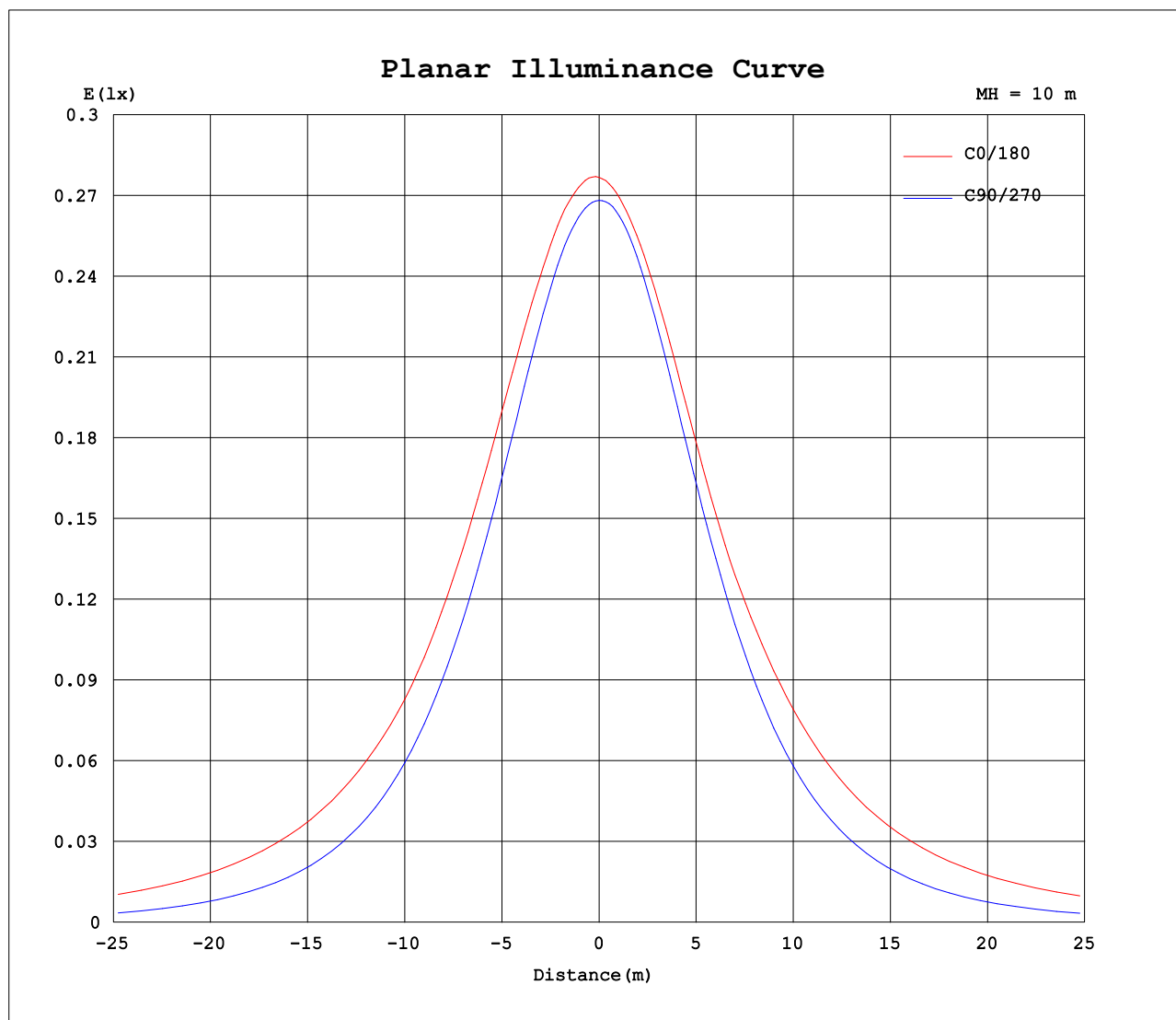
AvgL	cd/m2
L_0~180 (65) av	2937
L_0~180 (75) av	4380
L_0~180 (85) av	11657
L_90~270 (65) av	1188
L_90~270 (75) av	884
L_90~270 (85) av	357
L_45 (65) av	2246
L_45 (75) av	3102
L_45 (85) av	7785

Standard: GB/T 29293-2012

C Range: 0 - 360DEG
C Interval: 30.0DEG
Test Speed: HIGH
Temperature:25.3DEG
Operators:LPC
Test Date:2021-11-29

γ Range: 0 - 180DEG
γ Interval: 1.0DEG
Test System:EVERFINE GO-2000B_V1 SYSTEM V2.0.362
Humidity:65.0%
Test Distance:9.200m [K=1.0000]
Remarks:

Planar Illuminance Curve



C Range: 0 - 360DEG
C Interval: 30.0DEG
Test Speed: HIGH
Temperature: 25.3DEG
Operators: LPC
Test Date: 2021-11-29

γ Range: 0 - 180DEG
 γ Interval: 1.0DEG
Test System: EVERFINE GO-2000B_V1 SYSTEM V2.0.362
Humidity: 65.0%
Test Distance: 9.200m [K=1.0000]
Remarks:

LUMINOUS DISTRIBUTION INTENSITY DATA

Test:U:24.00V I:0.2562A P:6.149W PF:1.000 Freq:0Hz Lamp Flux:141.692x1 lm																	
NAME: SF21-24V-3528-72-2200-80									TYPE: 硅胶						WEIGHT:		
SPEC.:									DIM.: 28mm*11.5mm						SERIAL No.:2021112907		
MFR.: OLYMPIA									SUR.:1*0.016						Shielding Angle:		

Table--1

UNIT: cd

C (DEG) γ (DEG)	0	30	60	90	120	150	180	210	240	270	300	330						
0	27.7	27.6	27.1	26.8	26.8	26.8	27.7	27.6	27.1	26.8	26.8	26.8						
5	27.8	27.7	27.2	26.7	26.5	26.4	27.4	27.3	26.8	26.7	26.9	27.2						
10	27.7	27.6	27.1	26.3	25.9	25.7	27.1	26.8	26.3	26.3	26.8	27.4						
15	27.5	27.4	26.7	25.6	25.1	24.9	26.6	26.2	25.5	25.5	26.4	27.4						
20	27.1	27.0	26.0	24.7	24.0	23.9	26.0	25.4	24.4	24.5	25.7	27.2						
25	26.7	26.4	25.2	23.5	22.8	22.9	25.2	24.5	23.2	23.2	24.8	26.8						
30	26.1	25.7	24.1	22.1	21.4	22.2	24.3	23.4	21.9	21.8	23.8	26.3						
35	25.3	24.9	22.8	20.5	20.0	21.4	23.5	22.3	20.4	20.2	22.7	25.7						
40	24.4	23.9	21.5	18.7	18.5	20.5	23.0	21.6	18.8	18.4	21.5	24.9						
45	23.4	22.7	20.0	16.8	17.2	19.5	22.4	20.7	17.3	16.4	20.1	24.0						
50	22.8	21.5	18.5	14.7	15.7	18.5	21.7	19.8	15.9	14.4	18.7	23.0						
55	22.1	20.5	16.9	12.6	14.1	17.5	20.9	18.8	14.4	12.2	17.1	21.8						
60	21.3	19.6	15.3	10.4	12.6	16.5	20.1	17.7	12.8	10.0	15.5	20.7						
65	20.4	18.6	13.6	8.23	11.0	15.5	19.3	16.7	11.3	7.83	13.8	19.8						
70	19.6	17.6	11.9	6.01	9.63	14.4	18.4	15.7	9.86	5.57	12.2	18.9						
75	18.7	16.6	10.6	3.88	8.40	13.5	17.6	14.8	8.58	3.44	10.7	17.9						
80	17.8	15.7	9.31	1.97	7.34	12.4	16.6	13.8	7.49	1.62	9.46	16.9						
85	16.8	14.7	8.23	0.61	6.53	11.3	15.7	12.9	6.64	0.39	8.34	16.0						
90	15.9	13.8	7.44	0.40	5.89	10.2	14.7	12.0	5.96	0.29	7.52	15.1						
95	14.9	12.9	6.89	0.40	5.51	9.34	13.8	11.2	5.52	0.30	6.94	14.3						
100	13.8	11.4	6.58	0.44	5.27	8.12	12.6	9.71	5.29	0.31	6.60	12.3						
105	12.9	10.8	5.96	0.47	4.06	7.90	11.9	9.42	4.37	0.36	5.97	11.9						
110	12.1	10.3	5.95	0.48	3.64	7.67	11.2	9.02	4.14	0.37	6.02	11.4						
115	11.3	9.79	5.73	0.51	3.22	6.88	10.5	8.38	3.77	0.37	6.00	10.8						
120	10.7	9.36	5.77	0.56	2.94	6.45	8.81	7.40	3.57	0.38	5.56	10.3						
125	10.1	8.96	5.41	0.61	2.85	5.79	7.40	6.01	3.33	0.46	5.34	9.84						
130	9.49	8.46	5.08	0.64	2.61	5.73	6.22	5.55	3.10	0.53	5.01	9.29						
135	8.93	7.38	4.79	0.67	2.58	5.23	6.99	5.39	2.87	0.60	4.69	8.07						
140	8.34	6.22	4.46	0.69	2.28	4.69	6.54	5.35	2.72	0.67	4.26	6.66						
145	7.75	5.59	4.20	0.72	2.03	4.02	6.10	5.10	2.54	0.71	3.91	5.77						
150	7.16	4.84	3.93	0.74	2.20	3.39	5.82	4.60	2.37	0.79	3.59	5.25						
155	6.58	4.24	3.89	0.74	2.03	2.73	5.13	4.10	2.36	0.84	3.72	4.58						
160	5.84	3.59	3.91	0.75	2.09	2.51	4.31	3.49	2.04	0.84	3.97	3.86						
165	4.69	2.91	3.88	0.75	0.72	2.15	3.69	2.84	0.83	0.85	4.00	3.36						
170	2.36	2.77	3.69	0.75	0.71	1.36	1.55	2.45	0.76	0.87	3.92	3.61						
175	1.88	2.48	3.55	0.75	0.68	0.89	0.99	0.80	0.69	0.92	3.82	3.56						
180	0.70	0.68	0.68	0.72	0.91	0.74	0.70	0.69	0.66	0.97	0.90	0.77						

C Range: 0 - 360DEG
C Interval: 30.0DEG
Test Speed: HIGH
Temperature:25.3DEG
Operators:LPC
Test Date:2021-11-29

γ Range: 0 - 180DEG
γ Interval: 1.0DEG
Test System:EVERFINE GO-2000B_V1 SYSTEM V2.0.362
Humidity:65.0%
Test Distance:9.200m [K=1.0000]
Remarks:

Photometric Data Table [cd]

G/C	0.0	30.0	60.0	90.0	120.0	150.0	180.0	210.0	240.0	270.0
0.0	27.68	27.56	27.08	26.82	26.83	26.84	27.68	27.56	27.08	26.82
3.0	27.77	27.68	27.17	26.77	26.65	26.59	27.55	27.40	26.92	26.81
6.0	27.76	27.68	27.15	26.63	26.38	26.26	27.37	27.18	26.70	26.67
9.0	27.74	27.65	27.13	26.42	26.03	25.86	27.14	26.90	26.40	26.42
12.0	27.65	27.55	27.01	26.08	25.61	25.40	26.89	26.60	25.98	26.02
15.0	27.48	27.40	26.71	25.63	25.08	24.88	26.60	26.21	25.46	25.52
18.0	27.30	27.18	26.34	25.09	24.48	24.32	26.24	25.77	24.86	24.94
21.0	27.08	26.91	25.88	24.48	23.79	23.71	25.83	25.26	24.20	24.26
24.0	26.81	26.54	25.35	23.74	23.06	23.13	25.36	24.66	23.47	23.51
27.0	26.47	26.15	24.75	22.95	22.27	22.61	24.84	24.04	22.67	22.69
30.0	26.07	25.75	24.09	22.10	21.44	22.21	24.30	23.37	21.87	21.80
33.0	25.61	25.24	23.35	21.14	20.56	21.77	23.76	22.71	20.99	20.83
36.0	25.11	24.68	22.56	20.12	19.67	21.25	23.38	22.17	20.08	19.81
39.0	24.58	24.09	21.75	19.07	18.82	20.72	23.10	21.72	19.15	18.72
42.0	23.99	23.43	20.90	17.95	18.00	20.16	22.77	21.24	18.21	17.59
45.0	23.45	22.72	20.02	16.78	17.17	19.54	22.39	20.71	17.32	16.44
48.0	23.07	22.00	19.12	15.58	16.30	18.97	22.01	20.15	16.49	15.22
51.0	22.68	21.26	18.21	14.34	15.39	18.33	21.57	19.57	15.61	13.97
54.0	22.26	20.65	17.26	13.05	14.45	17.68	21.10	18.97	14.69	12.69
57.0	21.81	20.16	16.28	11.77	13.51	17.09	20.62	18.35	13.77	11.39
60.0	21.32	19.60	15.28	10.45	12.57	16.48	20.12	17.70	12.84	10.04
63.0	20.78	19.03	14.26	9.082	11.66	15.86	19.61	17.09	11.91	8.729
66.0	20.26	18.43	13.25	7.781	10.75	15.26	19.13	16.52	11.02	7.372
69.0	19.75	17.79	12.24	6.434	9.904	14.65	18.61	15.92	10.14	6.009
72.0	19.25	17.18	11.37	5.112	9.120	14.05	18.09	15.34	9.325	4.708
75.0	18.72	16.62	10.58	3.882	8.396	13.47	17.55	14.75	8.582	3.441
78.0	18.18	16.05	9.803	2.691	7.737	12.81	17.00	14.17	7.903	2.290
81.0	17.62	15.48	9.069	1.636	7.164	12.15	16.44	13.62	7.290	1.324
84.0	17.03	14.92	8.426	0.8271	6.681	11.50	15.85	13.07	6.778	0.5601
87.0	16.45	14.36	7.887	0.4279	6.259	10.83	15.29	12.54	6.351	0.3069
90.0	15.86	13.81	7.445	0.4010	5.891	10.21	14.72	12.01	5.964	0.2863
93.0	15.29	13.28	7.082	0.3981	5.645	9.653	14.17	11.53	5.663	0.2932
96.0	14.74	12.78	6.811	0.4071	5.459	9.231	13.62	11.07	5.462	0.3001
99.0	14.20	12.06	6.625	0.4223	5.323	8.381	13.09	9.963	5.327	0.3070
102.0	13.36	11.13	6.479	0.4507	5.112	8.036	12.33	9.625	5.216	0.3365
105.0	12.86	10.78	5.962	0.4670	4.059	7.895	11.87	9.419	4.367	0.3596
108.0	12.38	10.47	5.957	0.4758	3.725	7.754	11.45	9.193	4.291	0.3641
111.0	11.91	10.18	5.952	0.4846	3.569	7.623	11.05	8.946	4.079	0.3685
114.0	11.48	9.880	5.705	0.5076	3.287	6.990	10.65	8.545	3.844	0.3730
117.0	11.06	9.603	5.775	0.5378	3.146	6.663	9.706	8.048	3.678	0.3775
120.0	10.66	9.357	5.765	0.5629	2.936	6.453	8.812	7.405	3.568	0.3819
123.0	10.29	9.121	5.458	0.5931	2.825	6.241	7.948	6.741	3.467	0.4421
126.0	9.952	8.885	5.343	0.6183	2.855	5.671	7.124	5.776	3.271	0.4723
129.0	9.606	8.628	5.142	0.6433	2.639	5.819	6.425	5.691	3.116	0.5226
132.0	9.269	7.999	4.946	0.6634	2.608	5.583	6.736	5.448	3.020	0.5577
135.0	8.927	7.381	4.785	0.6735	2.578	5.231	6.986	5.388	2.875	0.5980
138.0	8.580	6.687	4.589	0.6835	2.423	4.939	6.864	5.342	2.774	0.6481
141.0	8.229	6.115	4.403	0.6986	2.217	4.567	5.347	5.337	2.699	0.6884
144.0	7.872	5.708	4.252	0.7087	2.046	4.170	6.047	5.167	2.583	0.6984
147.0	7.515	5.281	4.092	0.7289	2.155	3.743	6.136	4.936	2.458	0.7387
150.0	7.158	4.844	3.926	0.7355	2.201	3.386	5.823	4.600	2.366	0.7890
153.0	6.801	4.472	3.835	0.7422	2.076	3.009	5.421	4.163	2.277	0.8340
156.0	6.459	4.125	3.905	0.7448	2.011	2.602	4.994	3.971	2.357	0.8443
159.0	6.038	3.743	3.915	0.7454	1.929	2.433	4.531	3.590	2.140	0.8443
162.0	5.291	3.280	3.908	0.7459	1.575	2.370	4.019	3.278	1.936	0.8476
165.0	4.691	2.910	3.880	0.7465	0.7203	2.151	3.692	2.836	0.8276	0.8527
168.0	2.547	2.849	3.740	0.7471	0.7097	2.367	1.842	2.433	0.7853	0.8594
171.0	2.273	2.713	3.674	0.7477	0.7037	1.268	1.472	2.108	0.7430	0.8745
174.0	1.961	2.522	3.594	0.7483	0.6787	0.9858	1.169	0.9263	0.7007	0.9045
177.0	1.740	2.302	3.006	0.7488	0.6735	0.7036	0.6986	0.7037	0.6584	0.9298
180.0	0.7036	0.6835	0.6835	0.7187	0.9147	0.7438	0.6986	0.6936	0.6584	0.9750
G/C	300.0	330.0								
0.0	26.83	26.84								
3.0	26.90	27.06								
6.0	26.88	27.24								
9.0	26.85	27.33								
12.0	26.66	27.38								
15.0	26.38	27.39								
18.0	26.01	27.28								
21.0	25.55	27.09								
24.0	25.02	26.87								
27.0	24.43	26.60								
30.0	23.80	26.29								

C Range: 0 - 360DEG
 C Interval: 30.0DEG
 Test Speed: HIGH
 Temperature: 25.3DEG
 Operators: LPC
 Test Date: 2021-11-29

γ Range: 0 - 180DEG
 γ Interval: 1.0DEG
 Test System: EVERFINE GO-2000B_V1 SYSTEM V2.0.362
 Humidity: 65.0%
 Test Distance: 9.200m [K=1.0000]
 Remarks:

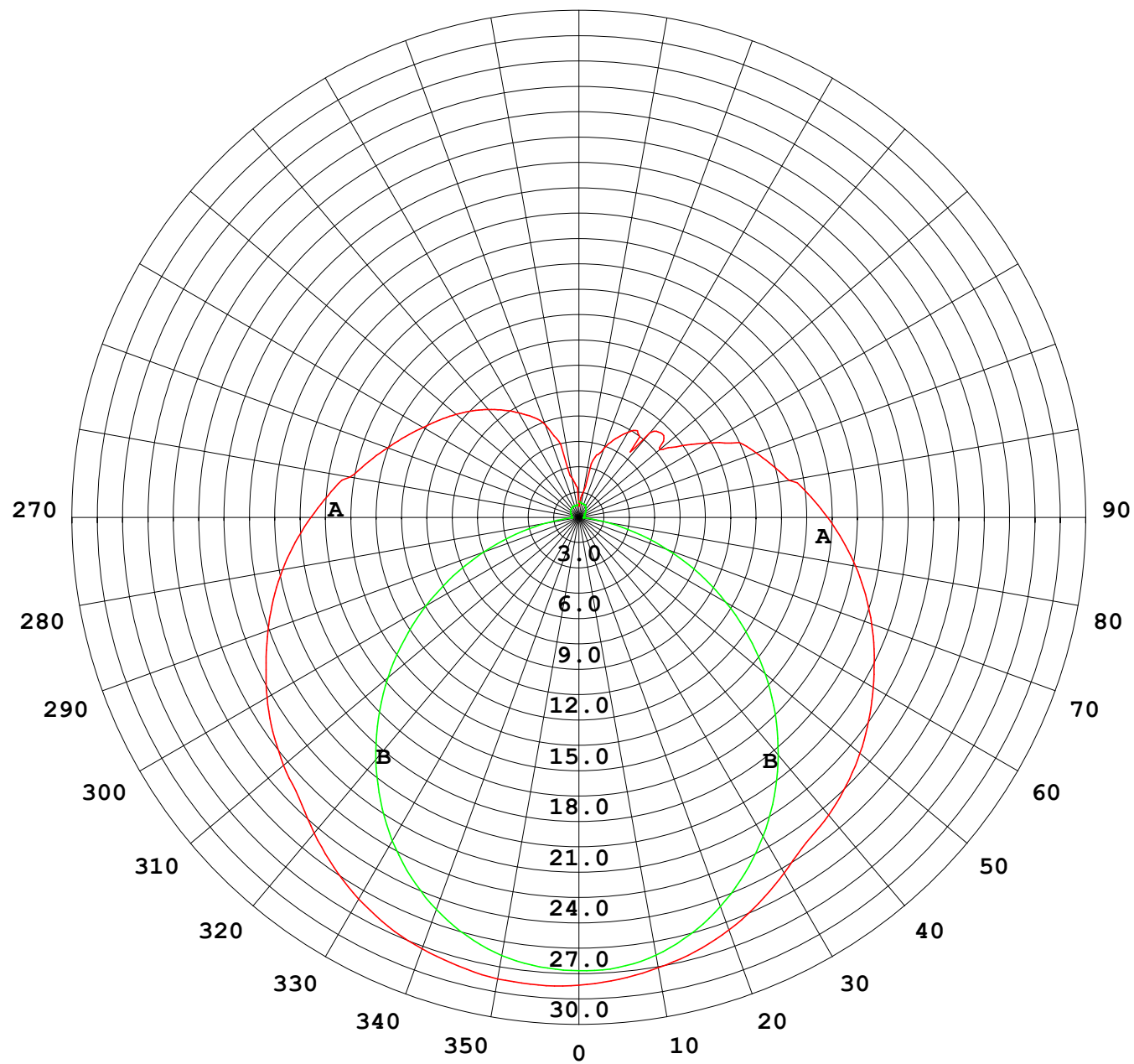
Photometric Data Table [cd]

33.0	23.14	25.92
36.0	22.43	25.52
39.0	21.70	25.09
42.0	20.93	24.59
45.0	20.12	24.03
48.0	19.28	23.42
51.0	18.38	22.76
54.0	17.45	22.09
57.0	16.52	21.37
60.0	15.52	20.66
63.0	14.51	20.11
66.0	13.52	19.62
69.0	12.51	19.08
72.0	11.55	18.50
75.0	10.73	17.90
78.0	9.953	17.28
81.0	9.224	16.73
84.0	8.536	16.18
87.0	7.984	15.63
90.0	7.517	15.11
93.0	7.145	14.59
96.0	6.854	14.09
99.0	6.654	13.19
102.0	6.492	12.20
105.0	5.970	11.93
108.0	6.011	11.65
111.0	6.019	11.30
114.0	6.006	10.96
117.0	5.733	10.63
120.0	5.557	10.30
123.0	5.452	10.01
126.0	5.256	9.746
129.0	5.085	9.459
132.0	4.879	8.772
135.0	4.693	8.068
138.0	4.422	6.945
141.0	4.181	6.589
144.0	3.975	5.992
147.0	3.809	5.564
150.0	3.593	5.247
153.0	3.599	4.856
156.0	3.785	4.434
159.0	3.941	4.012
162.0	3.981	3.590
165.0	3.995	3.362
168.0	3.965	3.553
171.0	3.900	3.628
174.0	3.825	3.564
177.0	3.691	3.533
180.0	0.9046	0.7740

C Range: 0 - 360DEG
C Interval: 30.0DEG
Test Speed: HIGH
Temperature:25.3DEG
Operators:LPC
Test Date:2021-11-29

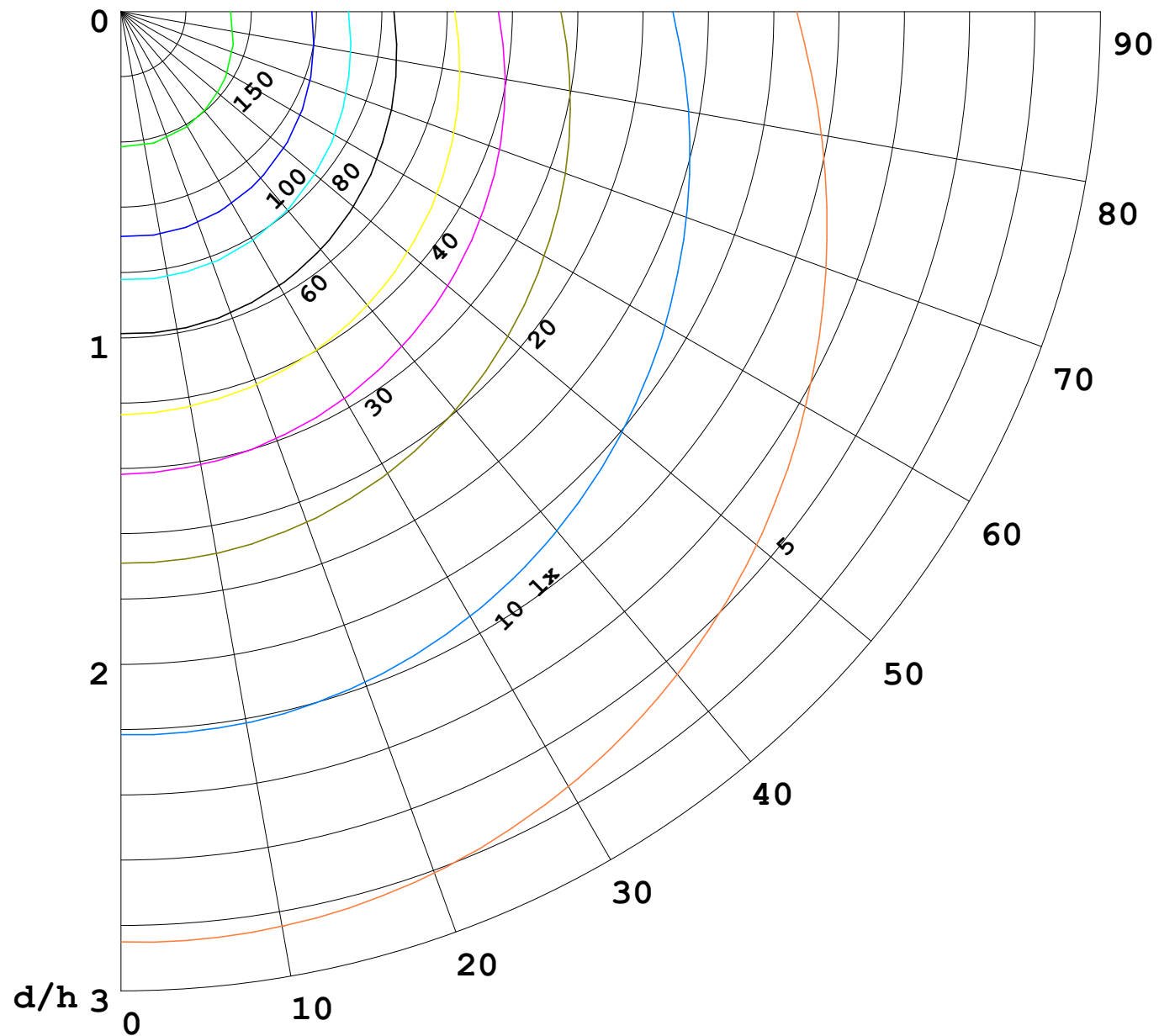
γ Range: 0 - 180DEG
γ Interval: 1.0DEG
Test System:EVERFINE GO-2000B_V1 SYSTEM V2.0.362
Humidity:65.0%
Test Distance:9.200m [K=1.0000]
Remarks:

I (cd)



1000 lm

$\kappa = 1$



F = 5000 lm
 K = 0.7
 Hcc = 0.0 m
 Hfc = 0.0 m
 Eave = 100 lx

	Pcc	Pw	Pfc
—	70	50	30
—	50	30	20

