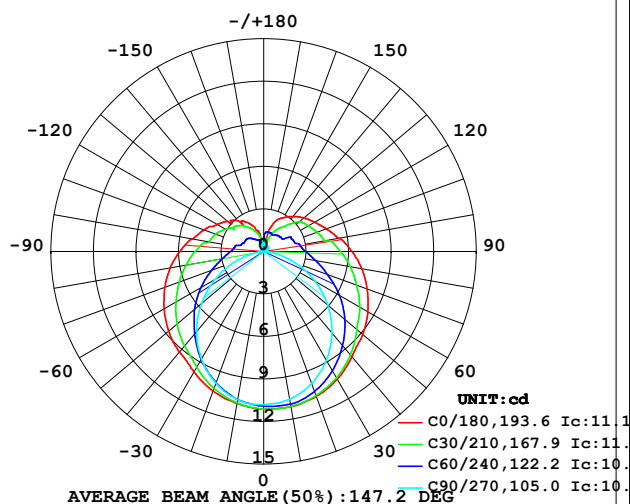


LUMINAIRE PHOTOMETRIC TEST REPORT

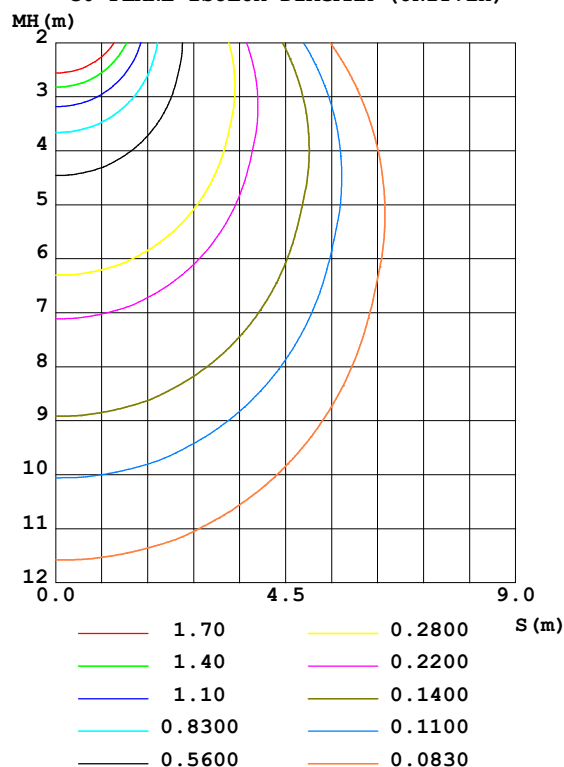
Test:U:24.00V I:0.2336A P:5.606W PF:1.000 Freq:0Hz Lamp Flux:56.7879x1 lm		
NAME: SF21-24V-3528-72-P	TYPE: 硅胶	WEIGHT:
SPEC.:	DIM.: 28mm*11.5mm	SERIAL No.:2021113006
MFR.: OLYMPIA	SUR.:1*0.016	Shielding Angle:

DATA OF LAMP		PHOTOMETRIC DATA Eff: 10.13 lm/W			
MODEL	3528	I _{max} (cd)	11.14	S/MH (C0/180)	1.32
NOMINAL POWER (W)	5	LOR (%)	100.0	S/MH (C90/270)	1.21
RATED VOLTAGE (V)	24	TOTAL FLUX (lm)	56.788	η UP, DN (C0-180)	12.8, 36.6
NOMINAL FLUX (lm)	56.7879	CIE CLASS	SEMI-D.	η UP, DN (C180-360)	13.4, 37.2
LAMPS INSIDE	1	η up (%)	26.2	CIBSE SHR NOM	1.50
TEST VOLTAGE (V)	24.0	η down (%)	73.8	CIBSE SHR MAX	1.50

LUMINOUS INTENSITY DISTRIBUTION DIAGRAM



C0 PLANE ISOLUX DIAGRAM (UNIT: lx)



C Range: 0 - 360DEG
C Interval: 30.0DEG
Test Speed: HIGH
Temperature: 25.3DEG
Operators: LPC
Test Date: 2021-11-30

γ Range: 0 - 180DEG
γ Interval: 1.0DEG
Test System: EVERFINE GO-2000B_V1 SYSTEM V2.0.362
Humidity: 65.0%
Test Distance: 9.200m [K=1.0000]
Remarks:

ZONAL FLUX DIAGRAM

ZONAL FLUX DIAGRAM:

γ	C0	C45	C90	C135	C180	C225	C270	C315	γ	Φ zone	Φ total	%lum, lamp
10	11.11	11.02	10.59	10.39	10.89	10.72	10.62	10.91	0- 10	1.036	1.036	1.82,1.82
20	10.87	10.66	9.910	9.627	10.48	10.06	9.886	10.65	10- 20	2.981	4.017	7.07,7.07
30	10.39	9.999	8.864	8.750	9.825	9.132	8.776	10.07	20- 30	4.565	8.582	15.1,15.1
40	9.691	9.092	7.497	7.818	9.247	8.139	7.369	9.325	30- 40	5.653	14.23	25.1,25.1
50	9.122	8.026	5.909	6.828	8.749	7.176	5.741	8.390	40- 50	6.219	20.45	36,36
60	8.484	6.996	4.170	5.780	8.111	6.131	3.962	7.292	50- 60	6.256	26.71	47,47
70	7.771	5.888	2.371	4.782	7.422	5.131	2.172	6.257	60- 70	5.820	32.53	57.3,57.3
80	7.027	4.963	0.7528	3.955	6.689	4.259	0.6292	5.312	70- 80	5.090	37.62	66.2,66.2
90	6.233	4.199	0.1637	3.317	5.925	3.588	0.0855	4.553	80- 90	4.317	41.94	73.8,73.8
100	5.399	3.493	0.1558	2.784	5.100	2.986	0.0854	3.816	90-100	3.707	45.64	80.4,80.4
110	4.715	3.125	0.1861	2.376	4.477	2.623	0.1104	3.433	100-110	3.051	48.70	85.7,85.7
120	4.162	2.830	0.2865	2.053	3.809	2.322	0.1908	3.068	110-120	2.543	51.24	90.2,90.2
130	3.699	2.417	0.3720	1.789	3.328	2.088	0.2312	2.697	120-130	2.036	53.27	93.8,93.8
140	3.227	1.902	0.4373	1.435	2.838	1.794	0.2814	2.151	130-140	1.525	54.80	96.5,96.5
150	2.760	1.565	0.4694	1.118	2.372	1.430	0.3367	1.751	140-150	1.020	55.82	98.3,98.3
160	2.167	1.081	0.4742	0.9020	1.657	1.131	0.4422	1.525	150-160	0.6170	56.44	99.4,99.4
170	0.7593	1.169	0.4790	0.4906	0.5475	0.6489	0.5477	1.417	160-170	0.2828	56.72	99.9,99.9
180	0.2412	0.3066	0.4624	0.5327	0.2412	0.2337	0.6634	0.5403	170-180	0.0693	56.79	100,100
DEG	LUMINOUS INTENSITY:cd									UNIT:lm		

Conical surface Flux(90deg): 17.306 lm

%lum = 30.5%

%lamp = 30.5%

Conical surface Flux(120deg): 26.709 lm

%lum = 47.0%

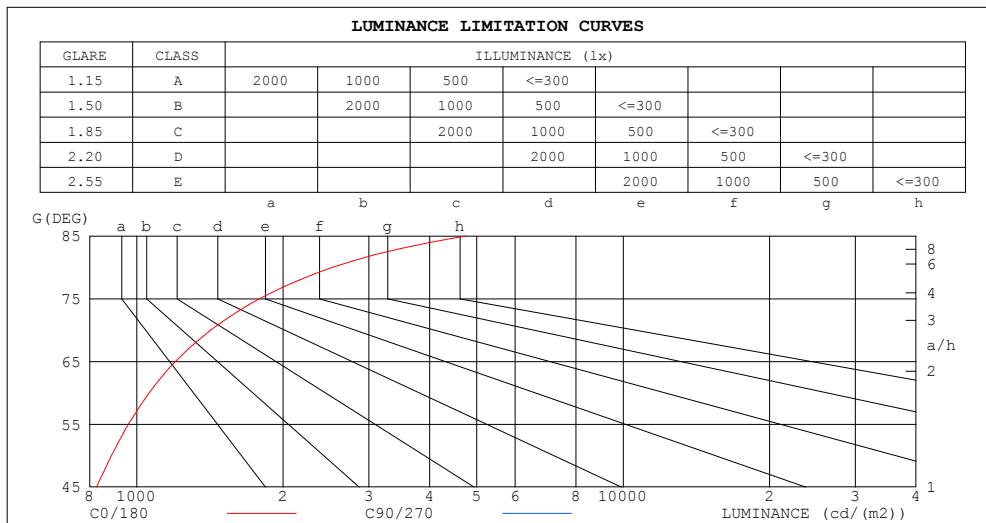
%lamp = 47.0%

C Range: 0 - 360DEG
 C Interval: 30.0DEG
 Test Speed: HIGH
 Temperature:25.3DEG
 Operators:LPC
 Test Date:2021-11-30

γ Range: 0 - 180DEG
 γ Interval: 1.0DEG
 Test System:EVERFINE GO-2000B_V1 SYSTEM V2.0.362
 Humidity:65.0%
 Test Distance:9.200m [K=1.0000]
 Remarks:

LUMINANCE LIMITATION CURVES

Test:U:24.00V I:0.2336A P:5.606W PF:1.000 Freq:0Hz Lamp Flux:56.7879x1 lm		
NAME: SF21-24V-3528-72-P	TYPE: 硅胶	WEIGHT:
SPEC.:	DIM.: 28mm*11.5mm	SERIAL No.:2021113006
MFR.: OLYMPIA	SUR.:1*0.016	Shielding Angle:



LUMINANCE cd/(m2)		
G (DEG)	C0/180	C90/270
85	4758	151
80	2529	271
75	1790	365
70	1420	433
65	1202	484
60	1061	521
55	962	550
50	887	575
45	827	594

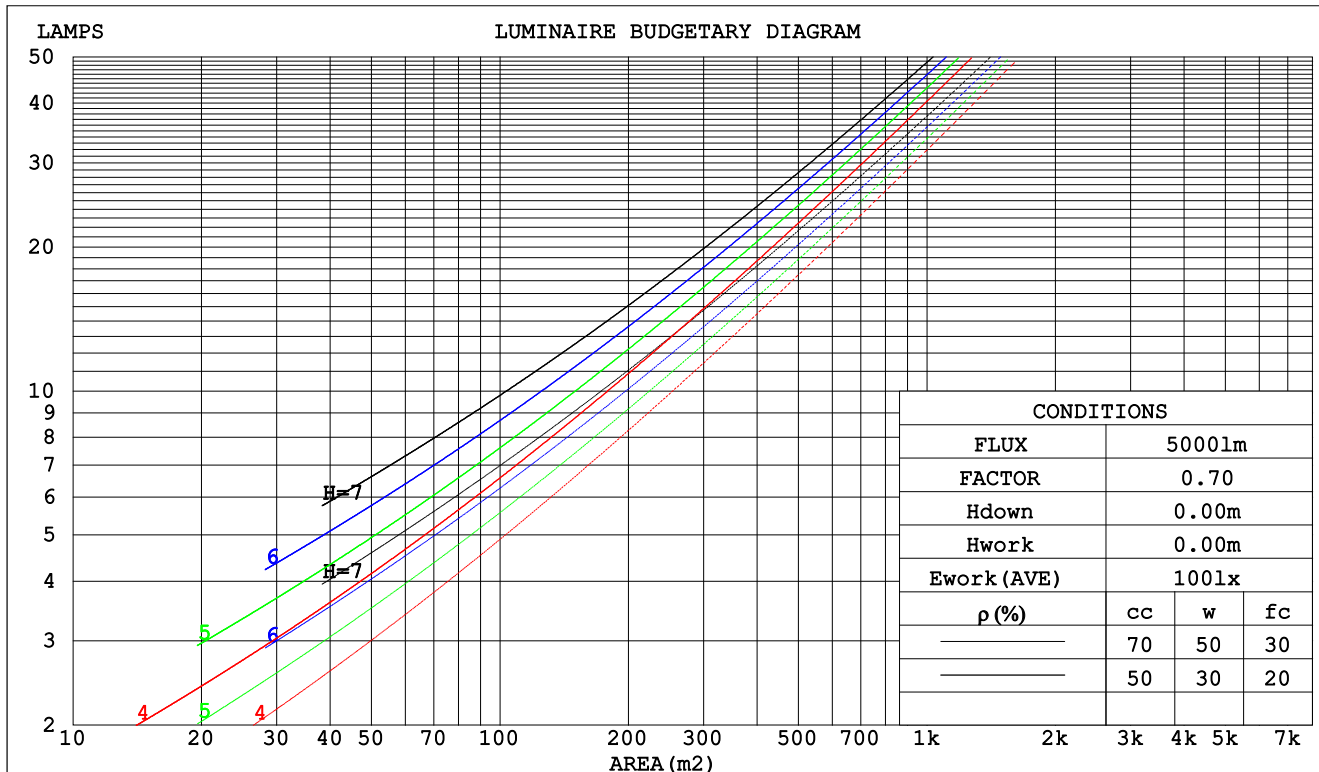
C Range: 0 - 360DEG
C Interval: 30.0DEG
Test Speed: HIGH
Temperature:25.3DEG
Operators:LPC
Test Date:2021-11-30

γ Range: 0 - 180DEG
γ Interval: 1.0DEG
Test System:EVERFINE GO-2000B_V1 SYSTEM V2.0.362
Humidity:65.0%
Test Distance:9.200m [K=1.0000]
Remarks:

CU AND LUMINAIRE BUDGETARY ESTIMATE DIAGRAM

Test:U:24.00V I:0.2336A P:5.606W PF:1.000 Freq:0Hz Lamp Flux:56.7879x1 lm		
NAME: SF21-24V-3528-72-P	TYPE: 硅胶	WEIGHT:
SPEC.:	DIM.: 28mm*11.5mm	SERIAL No.:2021113006
MFR.: OLYMPIA	SUR.:1*0.016	Shielding Angle:

pcc	80%			70%			50%			30%			10%			0
pw	50%	30%	10%	50%	30%	10%	50%	30%	10%	50%	30%	10%	50%	30%	10%	0
pfc	20%			20%			20%			20%			20%			0
RCR	RCR:Room Cavity Ratio						Coefficients of Utilization(CU)									
0.0	1.13	1.13	1.13	1.07	1.07	1.07	.97	.97	.97	.87	.87	.87	.78	.78	.78	.74
1.0	.94	.88	.84	.89	.84	.80	.80	.76	.72	.71	.68	.66	.64	.61	.59	.55
2.0	.80	.72	.66	.76	.69	.63	.68	.62	.58	.61	.56	.52	.54	.51	.47	.44
3.0	.69	.61	.53	.66	.58	.51	.59	.53	.47	.53	.48	.43	.47	.43	.39	.36
4.0	.61	.52	.45	.58	.49	.43	.52	.45	.39	.47	.41	.36	.42	.37	.33	.30
5.0	.54	.45	.38	.51	.43	.36	.46	.39	.34	.42	.36	.31	.37	.32	.28	.25
6.0	.48	.39	.33	.46	.38	.31	.42	.34	.29	.37	.31	.27	.34	.28	.25	.22
7.0	.44	.35	.28	.42	.33	.27	.38	.31	.25	.34	.28	.24	.31	.25	.22	.19
8.0	.40	.31	.25	.38	.30	.24	.34	.27	.23	.31	.25	.21	.28	.23	.19	.17
9.0	.36	.28	.22	.35	.27	.22	.31	.25	.20	.29	.23	.19	.26	.21	.17	.15
10.0	.33	.25	.20	.32	.24	.19	.29	.23	.18	.26	.21	.17	.24	.19	.16	.14



C Range: 0 - 360DEG
 C Interval: 30.0DEG
 Test Speed: HIGH
 Temperature:25.3DEG
 Operators:LPC
 Test Date:2021-11-30

γ Range: 0 - 180DEG
 γ Interval: 1.0DEG
 Test System:EVERFINE GO-2000B_V1 SYSTEM V2.0.362
 Humidity:65.0%
 Test Distance:9.200m [K=1.0000]
 Remarks:

WEC AND CCEC

Test:U:24.00V I:0.2336A P:5.606W PF:1.000 Freq:0Hz Lamp Flux:56.7879x1 lm		
NAME: SF21-24V-3528-72-P	TYPE: 硅胶	WEIGHT:
SPEC.:	DIM.: 28mm*11.5mm	SERIAL No.:2021113006
MFR.: OLYMPIA	SUR.:1*0.016	Shielding Angle:

pcc	80%			70%			50%			30%			10%			0	
pw	50%	30%	10%	50%	30%	10%	50%	30%	10%	50%	30%	10%	50%	30%	10%	0	
pfc	20%			20%			20%			20%			20%			0	
RCR	RCR:Room Cavity Ratio						Wall Exitance Coefficients(WEC)										
0.0																	
1.0	.384	.218	.069	.368	.210	.067	.340	.195	.062	.314	.181	.058	.290	.168	.054		
2.0	.330	.181	.055	.316	.174	.054	.290	.162	.050	.267	.150	.047	.245	.138	.044		
3.0	.292	.156	.047	.280	.150	.045	.257	.139	.042	.235	.129	.039	.215	.119	.037		
4.0	.263	.137	.040	.252	.132	.039	.230	.122	.036	.211	.113	.034	.192	.104	.032		
5.0	.239	.122	.035	.229	.117	.034	.209	.109	.032	.191	.101	.030	.174	.093	.028		
6.0	.219	.110	.031	.209	.106	.030	.192	.098	.029	.175	.091	.027	.159	.084	.025		
7.0	.202	.100	.028	.193	.096	.027	.177	.089	.026	.161	.083	.024	.147	.076	.022		
8.0	.187	.091	.026	.179	.088	.025	.164	.082	.023	.150	.076	.022	.137	.070	.020		
9.0	.174	.084	.024	.167	.081	.023	.153	.076	.021	.140	.070	.020	.128	.065	.019		
10.0	.163	.078	.022	.156	.076	.021	.144	.070	.020	.131	.065	.019	.120	.060	.017		

pcc	80%			70%			50%			30%			10%			0
pw	50%	30%	10%	50%	30%	10%	50%	30%	10%	50%	30%	10%	50%	30%	10%	0
pfc	20%			20%			20%			20%			20%			0
RCR	RCR:Room Cavity Ratio						Ceiling Cavity Exitance Coefficients(CCEC)									
0.0	.390	.390	.390	.333	.333	.333	.227	.227	.227	.131	.131	.131	.042	.042	.042	
1.0	.386	.356	.329	.331	.306	.284	.226	.210	.196	.130	.122	.114	.042	.039	.037	
2.0	.380	.334	.296	.325	.287	.256	.223	.199	.178	.128	.116	.104	.041	.037	.034	
3.0	.372	.318	.274	.319	.274	.238	.219	.190	.167	.127	.111	.098	.041	.036	.032	
4.0	.364	.306	.260	.313	.264	.226	.215	.184	.159	.124	.108	.094	.040	.035	.031	
5.0	.357	.296	.251	.307	.256	.218	.211	.179	.154	.122	.105	.091	.039	.034	.030	
6.0	.350	.288	.244	.300	.249	.212	.207	.175	.150	.120	.103	.089	.039	.034	.030	
7.0	.343	.282	.239	.295	.244	.208	.204	.171	.147	.118	.101	.088	.038	.033	.029	
8.0	.336	.276	.235	.289	.240	.205	.200	.168	.145	.116	.099	.087	.038	.033	.029	
9.0	.330	.271	.232	.284	.236	.202	.197	.166	.144	.115	.098	.086	.037	.032	.028	
10.0	.324	.267	.230	.279	.232	.200	.194	.163	.142	.113	.097	.085	.037	.032	.028	

C Range: 0 - 360DEG
 C Interval: 30.0DEG
 Test Speed: HIGH
 Temperature:25.3DEG
 Operators:LPC
 Test Date:2021-11-30

γ Range: 0 - 180DEG
 γ Interval: 1.0DEG
 Test System:EVERFINE GO-2000B_V1 SYSTEM V2.0.362
 Humidity:65.0%
 Test Distance:9.200m [K=1.0000]
 Remarks:

UGR(Unified Glare Rating) Table

Test:U:24.00V I:0.2336A P:5.606W PF:1.000 Freq:0Hz Lamp Flux:56.7879x1 lm										
NAME: SF21-24V-3528-72-P					TYPE: 硅胶			WEIGHT:		
SPEC.:					DIM.: 28mm*11.5mm			SERIAL No.:2021113006		
MFR.: OLYMPIA					SUR.:1*0.016			Shielding Angle:		
ceiling/cavity	0.7	0.7	0.5	0.5	0.3	0.7	0.7	0.5	0.5	0.3
walls	0.5	0.3	0.5	0.3	0.3	0.5	0.3	0.5	0.3	0.3
working plane	0.2	0.2	0.2	0.2	0.2	0.2	0.2	0.2	0.2	0.2
Room dimensions	Viewed crosswise					Viewed endwise				
x = 2H y = 2H	21.7	23.0	22.3	23.6	24.3	19.2	20.5	19.9	21.1	21.9
3H	24.5	25.7	25.1	26.3	27.1	20.7	21.8	21.3	22.5	23.2
4H	26.1	27.2	26.8	27.9	28.7	21.2	22.3	21.8	23.0	23.7
6H	27.9	28.9	28.6	29.6	30.4	21.5	22.6	22.2	23.3	24.1
8H	28.9	29.9	29.6	30.6	31.4	21.6	22.6	22.3	23.3	24.1
12H	30.0	31.0	30.7	31.7	32.5	21.6	22.6	22.3	23.3	24.1
4H 2H	22.2	23.4	22.9	24.0	24.8	20.5	21.6	21.2	22.3	23.1
3H	25.3	26.3	26.0	27.0	27.8	22.3	23.3	23.0	24.0	24.8
4H	27.1	28.0	27.8	28.7	29.6	23.1	24.0	23.8	24.7	25.6
6H	29.1	29.9	29.9	30.7	31.5	23.7	24.5	24.5	25.3	26.2
8H	30.2	31.0	31.0	31.7	32.6	23.9	24.7	24.7	25.4	26.3
12H	31.5	32.2	32.3	33.0	33.9	24.0	24.7	24.8	25.5	26.4
8H 4H	27.5	28.2	28.2	29.0	29.9	24.4	25.1	25.2	25.9	26.8
6H	29.8	30.4	30.6	31.2	32.2	25.5	26.1	26.3	26.9	27.9
8H	31.1	31.7	31.9	32.5	33.5	26.0	26.5	26.8	27.4	28.3
12H	32.7	33.2	33.5	34.0	35.0	26.4	26.9	27.2	27.7	28.7
12H 4H	27.5	28.2	28.3	29.0	29.9	24.8	25.5	25.6	26.3	27.2
6H	29.9	30.5	30.7	31.3	32.2	26.2	26.8	27.0	27.6	28.5
8H	31.4	31.9	32.2	32.7	33.7	26.9	27.4	27.7	28.2	29.2
Variations with the observer position at spacings:										
S = 1.0H	+ 0.1 / - 0.1					+ 0.1 / - 0.1				
1.5H	+ 0.2 / - 0.3					+ 0.2 / - 0.3				
2.0H	+ 0.3 / - 0.4					+ 0.3 / - 0.5				

CIE Pub.117, 56.79 lm Total Lamp Luminous Flux Correct (8log(F/F0) = -10.0)

C Range: 0 - 360DEG
 C Interval: 30.0DEG
 Test Speed: HIGH
 Temperature:25.3DEG
 Operators:LPC
 Test Date:2021-11-30

γ Range: 0 - 180DEG
 γ Interval: 1.0DEG
 Test System:EVERFINE GO-2000B_V1 SYSTEM V2.0.362
 Humidity:65.0%
 Test Distance:9.200m [K=1.0000]
 Remarks:

UTILIZATION FACTORS TABLE

Test:U:24.00V I:0.2336A P:5.606W PF:1.000 Freq:0Hz Lamp Flux:56.7879x1 lm		
NAME: SF21-24V-3528-72-P	TYPE: 硅胶	WEIGHT:
SPEC.:	DIM.: 28mm*11.5mm	SERIAL No.:2021113006
MFR.: OLYMPIA	SUR.:1*0.016	Shielding Angle:

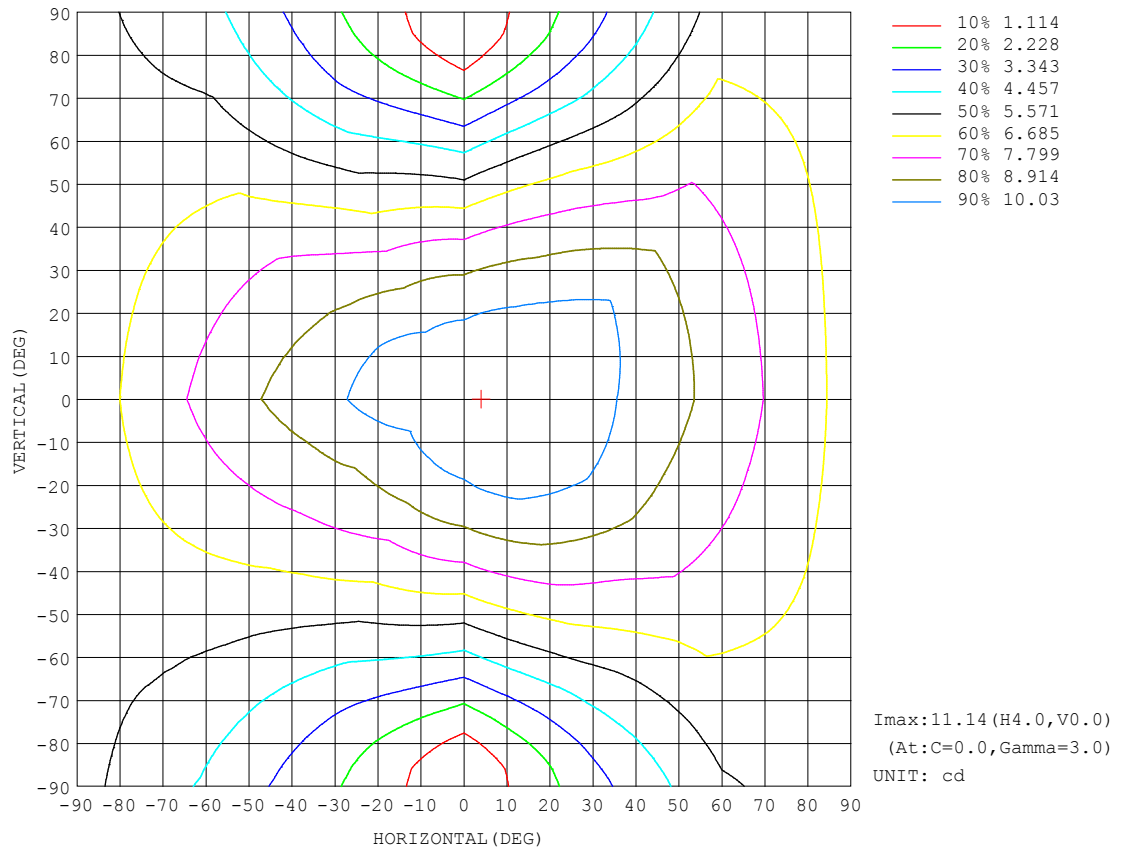
REFLECTANCE										
Ceiling	0.8	0.8	0.8	0.7	0.7	0.7	0.5	0.5	0.5	0
Walls	0.7	0.5	0.3	0.7	0.5	0.3	0.7	0.5	0.3	0
Working plane	0.2	0.2	0.2	0.2	0.2	0.2	0.2	0.2	0.2	0
ROOM INDEX	UTILIZATION FACTORS (PERCENT) $k(RI) \times RCR = 5$									
$k = 0.60$	45	33	26	44	32	26	42	31	25	18
0.80	54	41	33	53	40	33	49	39	32	23
1.00	62	49	41	60	48	40	55	47	38	29
1.25	69	56	47	66	54	46	61	51	44	34
1.50	74	62	53	71	60	52	65	56	49	37
2.00	81	70	62	78	67	60	71	63	56	43
2.50	86	75	67	82	72	65	74	67	61	46
3.00	90	80	72	85	77	70	77	71	65	50
4.00	94	86	79	90	83	76	81	76	71	54
5.00	98	90	84	93	86	81	84	79	74	57
ROOM INDEX	UF (total)									Direct
According to DIN EN 13032-2 2004			Suspended					SHRNOM = 1.25		

C Range: 0 - 360DEG
 C Interval: 30.0DEG
 Test Speed: HIGH
 Temperature: 25.3DEG
 Operators: LPC
 Test Date: 2021-11-30

γ Range: 0 - 180DEG
 γ Interval: 1.0DEG
 Test System: EVERFINE GO-2000B_V1 SYSTEM V2.0.362
 Humidity: 65.0%
 Test Distance: 9.200m [K=1.0000]
 Remarks:

ISOCANDELA DIAGRAM

Test:U:24.00V I:0.2336A P:5.606W PF:1.000 Freq:0Hz Lamp Flux:56.7879x1 lm		
NAME: SF21-24V-3528-72-P	TYPE: 硅胶	WEIGHT:
SPEC.:	DIM.: 28mm*11.5mm	SERIAL No.:2021113006
MFR.: OLYMPIA	SUR.:1*0.016	Shielding Angle:

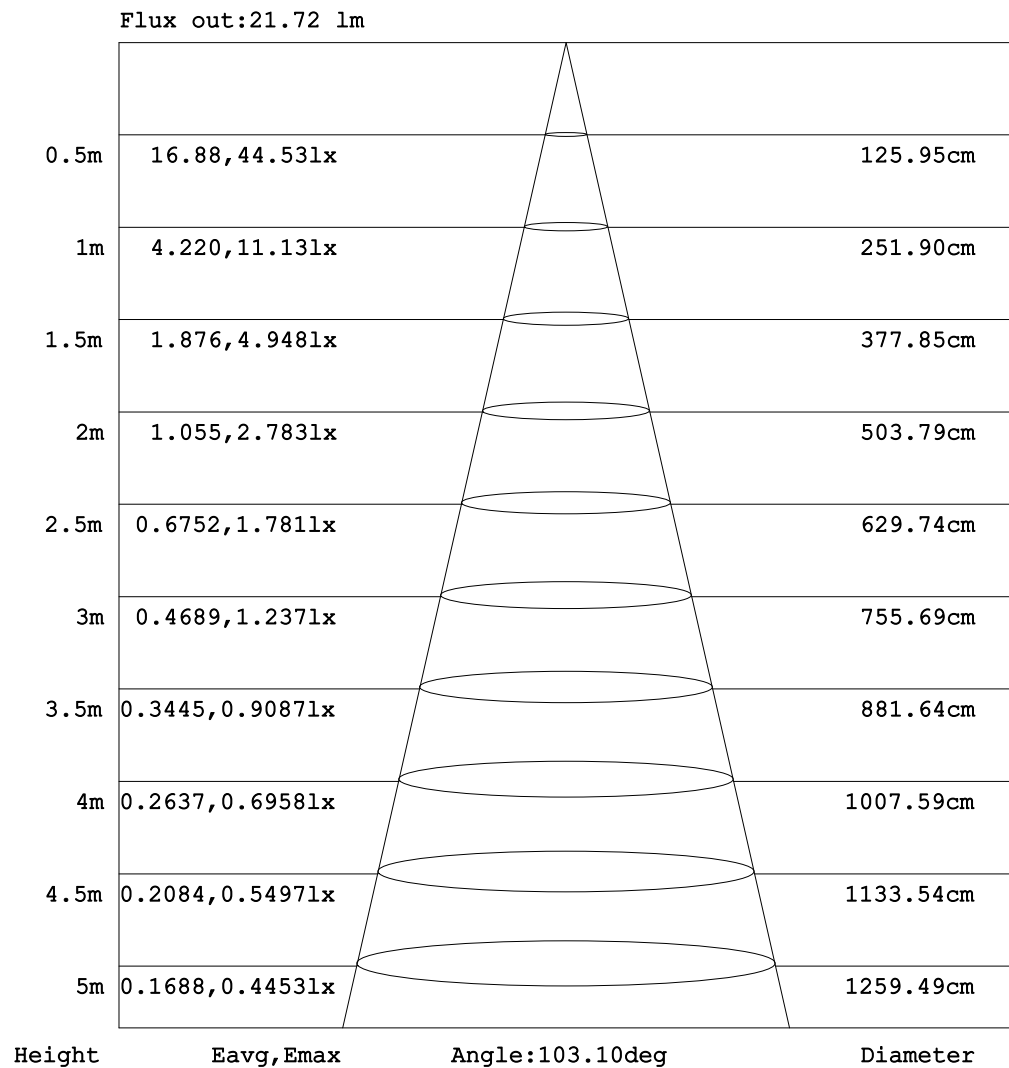


C Range: 0 - 360DEG
C Interval: 30.0DEG
Test Speed: HIGH
Temperature:25.3DEG
Operators:LPC
Test Date:2021-11-30

γ Range: 0 - 180DEG
 γ Interval: 1.0DEG
Test System:EVERFINE GO-2000B_V1 SYSTEM V2.0.362
Humidity:65.0%
Test Distance:9.200m [K=1.0000]
Remarks:

AAI Figure

Test:U:24.00V I:0.2336A P:5.606W PF:1.000 Freq:0Hz Lamp Flux:56.7879x1 lm		
NAME: SF21-24V-3528-72-P	TYPE: 硅胶	WEIGHT:
SPEC.:	DIM.: 28mm*11.5mm	SERIAL No.:2021113006
MFR.: OLYMPIA	SUR.:1*0.016	Shielding Angle:



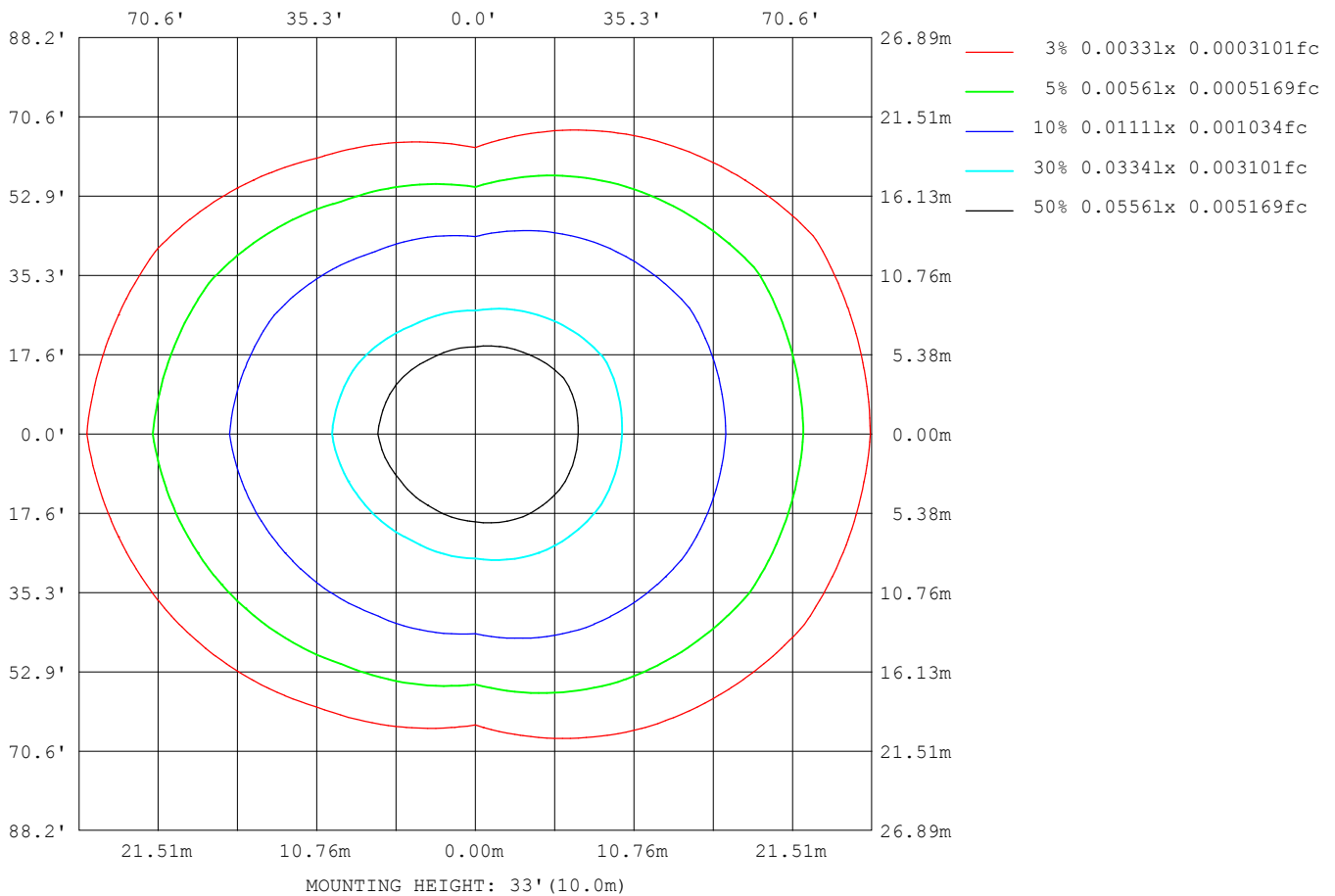
Note: The Curves indicate the illuminated area and the average illumination when the luminaire is at different distance.

C Range: 0 - 360DEG
 C Interval: 30.0DEG
 Test Speed: HIGH
 Temperature: 25.3DEG
 Operators: LPC
 Test Date: 2021-11-30

γ Range: 0 - 180DEG
 γ Interval: 1.0DEG
 Test System: EVERFINE GO-2000B_V1 SYSTEM V2.0.362
 Humidity: 65.0%
 Test Distance: 9.200m [K=1.0000]
 Remarks:

ISOLUX DIAGRAM

Test:U:24.00V I:0.2336A P:5.606W PF:1.000 Freq:0Hz Lamp Flux:56.7879x1 lm		
NAME: SF21-24V-3528-72-P	TYPE:硅胶	WEIGHT:
SPEC.:	DIM.: 28mm*11.5mm	SERIAL No.:2021113006
MFR.: OLYMPIA	SUR.:1*0.016	Shielding Angle:



C Range: 0 - 360DEG
C Interval: 30.0DEG
Test Speed: HIGH
Temperature:25.3DEG
Operators:LPC
Test Date:2021-11-30

γ Range: 0 - 180DEG
 γ Interval: 1.0DEG
Test System:EVERFINE GO-2000B_V1 SYSTEM V2.0.362
Humidity:65.0%
Test Distance:9.200m [K=1.0000]
Remarks:

LED Avg.L Report

Test:U:24.00V I:0.2336A P:5.606W PF:1.000 Freq:0Hz Lamp Flux:56.7879x1 lm		
NAME: SF21-24V-3528-72-P	TYPE:硅胶	WEIGHT:
SPEC.:	DIM.: 28mm*11.5mm	SERIAL No.:2021113006
MFR.: OLYMPIA	SUR.:1*0.016	Shielding Angle:

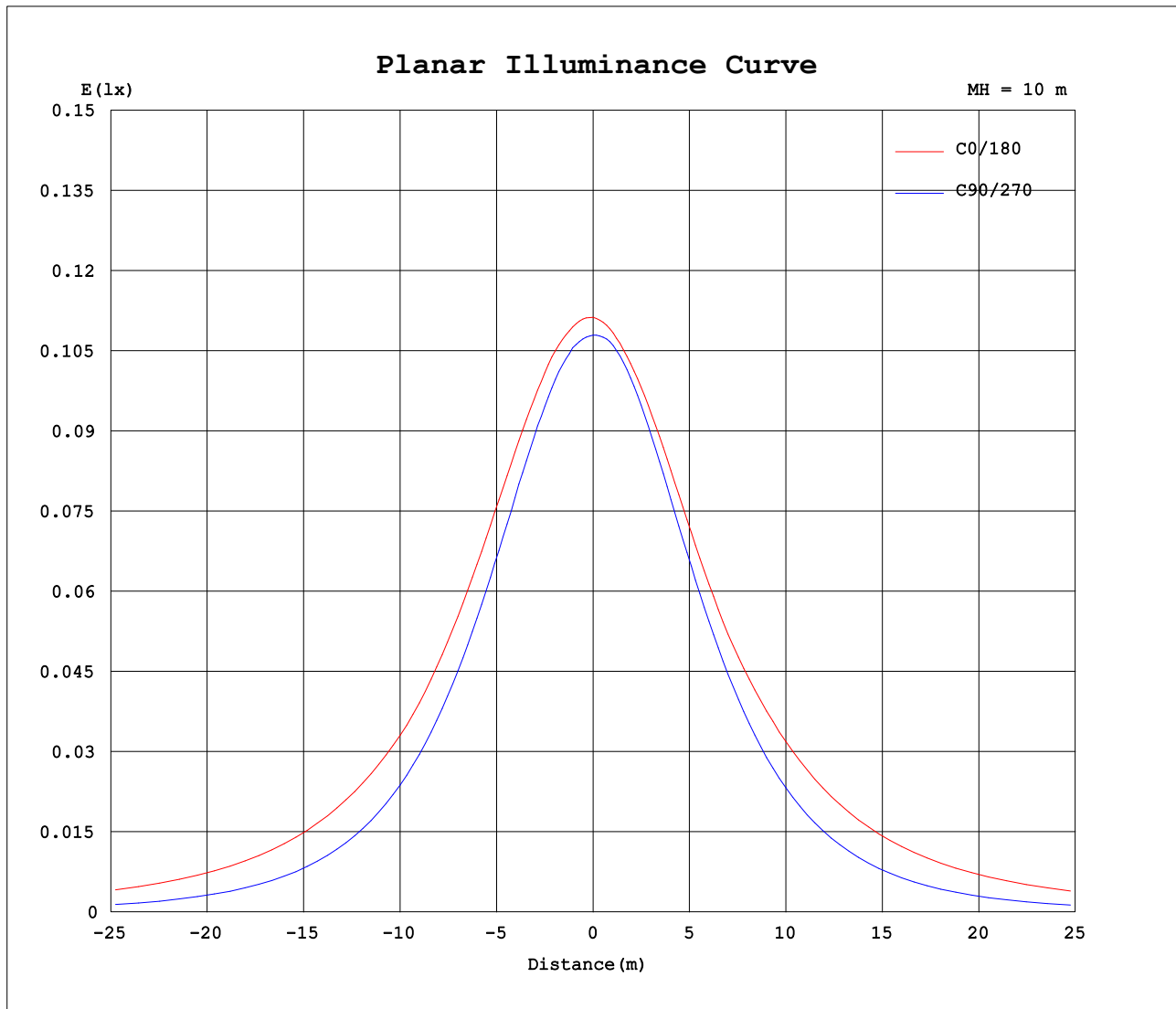
AvgL	cd/m2
L_0~180 (65) av	1175
L_0~180 (75) av	1748
L_0~180 (85) av	4638
L_90~270 (65) av	468
L_90~270 (75) av	344
L_90~270 (85) av	124
L_45 (65) av	900
L_45 (75) av	1240
L_45 (85) av	3122

Standard: GB/T 29293-2012

C Range: 0 - 360DEG
C Interval: 30.0DEG
Test Speed: HIGH
Temperature:25.3DEG
Operators:LPC
Test Date:2021-11-30

γ Range: 0 - 180DEG
γ Interval: 1.0DEG
Test System:EVERFINE GO-2000B_V1 SYSTEM V2.0.362
Humidity:65.0%
Test Distance:9.200m [K=1.0000]
Remarks:

Planar Illuminance Curve



C Range: 0 - 360DEG
C Interval: 30.0DEG
Test Speed: HIGH
Temperature: 25.3DEG
Operators: LPC
Test Date: 2021-11-30

γ Range: 0 - 180DEG
 γ Interval: 1.0DEG
Test System: EVERFINE GO-2000B_V1 SYSTEM V2.0.362
Humidity: 65.0%
Test Distance: 9.200m [K=1.0000]
Remarks:

LUMINOUS DISTRIBUTION INTENSITY DATA

Test:U:24.00V I:0.2336A P:5.606W PF:1.000 Freq:0Hz Lamp Flux:56.7879x1 lm		
NAME: SF21-24V-3528-72-P	TYPE: 硅胶	WEIGHT:
SPEC.:	DIM.: 28mm*11.5mm	SERIAL No.:2021113006
MFR.: OLYMPIA	SUR.:1*0.016	Shielding Angle:

Table--1

UNIT: cd

C (DEG) γ (DEG)	0	30	60	90	120	150	180	210	240	270	300	330						
0	11.1	11.1	10.9	10.8	10.8	10.8	11.1	11.1	10.9	10.8	10.8	10.8						
5	11.1	11.1	10.9	10.7	10.7	10.6	11.0	11.0	10.8	10.8	10.8	10.9						
10	11.1	11.1	10.9	10.6	10.4	10.3	10.9	10.8	10.6	10.6	10.8	11.0						
15	11.0	11.0	10.8	10.3	10.1	9.99	10.7	10.6	10.3	10.3	10.6	11.0						
20	10.9	10.8	10.5	9.91	9.67	9.59	10.5	10.3	9.84	9.89	10.3	11.0						
25	10.7	10.6	10.1	9.43	9.17	9.21	10.2	9.89	9.36	9.36	9.98	10.8						
30	10.4	10.3	9.71	8.86	8.60	8.90	9.82	9.45	8.81	8.78	9.55	10.6						
35	10.1	9.93	9.21	8.22	8.00	8.57	9.47	9.02	8.22	8.10	9.10	10.3						
40	9.69	9.52	8.66	7.50	7.43	8.21	9.25	8.70	7.58	7.37	8.60	10.0						
45	9.35	9.07	8.08	6.72	6.87	7.80	9.03	8.35	6.94	6.59	8.08	9.68						
50	9.12	8.58	7.47	5.91	6.28	7.38	8.75	7.98	6.38	5.74	7.51	9.27						
55	8.83	8.20	6.83	5.05	5.65	6.95	8.44	7.57	5.75	4.86	6.88	8.81						
60	8.48	7.82	6.17	4.17	5.01	6.55	8.11	7.14	5.12	3.96	6.25	8.33						
65	8.13	7.42	5.47	3.28	4.39	6.14	7.76	6.74	4.50	3.06	5.57	7.98						
70	7.77	6.98	4.80	2.37	3.83	5.74	7.42	6.35	3.91	2.17	4.90	7.61						
75	7.41	6.59	4.24	1.51	3.33	5.35	7.06	5.95	3.39	1.34	4.30	7.23						
80	7.03	6.20	3.73	0.75	2.91	5.00	6.69	5.56	2.96	0.63	3.80	6.83						
85	6.64	5.81	3.28	0.21	2.59	4.63	6.30	5.19	2.61	0.14	3.33	6.47						
90	6.23	5.43	2.97	0.16	2.34	4.30	5.92	4.84	2.34	0.09	3.00	6.10						
95	5.85	5.09	2.73	0.15	2.18	4.05	5.55	4.51	2.16	0.09	2.77	5.75						
100	5.40	4.38	2.60	0.16	2.09	3.48	5.10	3.92	2.06	0.09	2.62	5.01						
105	5.03	4.22	2.31	0.17	1.65	3.39	4.78	3.77	1.73	0.09	2.42	4.78						
110	4.71	4.01	2.24	0.19	1.51	3.24	4.48	3.61	1.63	0.11	2.29	4.57						
115	4.41	3.81	2.16	0.23	1.42	2.89	4.21	3.38	1.53	0.13	2.18	4.30						
120	4.16	3.64	2.02	0.29	1.42	2.68	3.81	3.13	1.52	0.19	2.12	4.02						
125	3.92	3.50	1.59	0.33	1.37	2.52	3.58	2.91	1.50	0.22	2.03	3.81						
130	3.70	3.27	1.56	0.37	1.24	2.34	3.33	2.73	1.44	0.23	1.94	3.45						
135	3.46	2.80	1.53	0.41	1.13	2.15	3.13	2.57	1.32	0.27	1.83	3.10						
140	3.23	2.32	1.49	0.44	0.98	1.89	2.84	2.41	1.18	0.28	1.66	2.64						
145	2.99	2.06	1.44	0.46	0.86	1.61	2.63	2.15	1.05	0.30	1.52	2.34						
150	2.76	1.75	1.38	0.47	0.88	1.36	2.37	1.92	0.94	0.34	1.40	2.10						
155	2.52	1.39	1.36	0.47	0.81	1.09	2.09	1.59	0.89	0.38	1.43	1.85						
160	2.17	0.76	1.40	0.47	0.84	0.96	1.66	1.43	0.83	0.44	1.48	1.57						
165	1.67	0.68	1.41	0.48	0.26	0.90	1.48	1.15	0.51	0.50	1.49	1.34						
170	0.76	0.93	1.41	0.48	0.25	0.73	0.55	0.90	0.39	0.55	1.50	1.34						
175	0.58	0.84	1.30	0.48	0.24	0.37	0.43	0.34	0.28	0.60	1.45	1.34						
180	0.24	0.23	0.38	0.46	0.60	0.46	0.24	0.24	0.23	0.66	0.61	0.47						

C Range: 0 - 360DEG
C Interval: 30.0DEG
Test Speed: HIGH
Temperature:25.3DEG
Operators:LPC
Test Date:2021-11-30

γ Range: 0 - 180DEG
γ Interval: 1.0DEG
Test System:EVERFINE GO-2000B_V1 SYSTEM V2.0.362
Humidity:65.0%
Test Distance:9.200m [K=1.0000]
Remarks:

Photometric Data Table [cd]

G/C	0.0	30.0	60.0	90.0	120.0	150.0	180.0	210.0	240.0	270.0
0.0	11.13	11.13	10.91	10.80	10.83	10.80	11.13	11.13	10.91	10.80
3.0	11.14	11.14	10.95	10.77	10.76	10.69	11.08	11.07	10.86	10.80
6.0	11.13	11.13	10.95	10.73	10.64	10.57	11.01	10.99	10.76	10.78
9.0	11.12	11.12	10.94	10.62	10.50	10.40	10.92	10.88	10.65	10.67
12.0	11.10	11.06	10.90	10.48	10.32	10.21	10.82	10.75	10.48	10.51
15.0	11.02	10.99	10.78	10.30	10.10	9.990	10.72	10.59	10.26	10.31
18.0	10.94	10.90	10.63	10.08	9.852	9.759	10.57	10.41	10.02	10.07
21.0	10.84	10.77	10.43	9.845	9.565	9.513	10.42	10.20	9.749	9.791
24.0	10.72	10.62	10.22	9.528	9.269	9.262	10.25	9.962	9.457	9.474
27.0	10.57	10.47	9.977	9.216	8.947	9.066	10.04	9.716	9.146	9.148
30.0	10.39	10.29	9.706	8.864	8.600	8.900	9.825	9.449	8.814	8.776
33.0	10.21	10.09	9.409	8.477	8.249	8.709	9.598	9.188	8.462	8.379
36.0	9.997	9.850	9.103	8.065	7.887	8.498	9.408	8.946	8.090	7.962
39.0	9.771	9.608	8.776	7.648	7.535	8.282	9.287	8.750	7.713	7.510
42.0	9.540	9.352	8.430	7.191	7.208	8.046	9.162	8.564	7.326	7.053
45.0	9.353	9.071	8.083	6.718	6.866	7.804	9.031	8.353	6.944	6.585
48.0	9.228	8.789	7.716	6.251	6.520	7.553	8.890	8.132	6.607	6.082
51.0	9.067	8.488	7.349	5.748	6.153	7.287	8.694	7.891	6.256	5.570
54.0	8.886	8.262	6.962	5.230	5.776	7.030	8.503	7.655	5.879	5.047
57.0	8.700	8.056	6.575	4.708	5.394	6.779	8.312	7.404	5.502	4.510
60.0	8.484	7.824	6.168	4.170	5.012	6.548	8.111	7.142	5.120	3.962
63.0	8.263	7.583	5.751	3.642	4.640	6.301	7.900	6.891	4.743	3.424
66.0	8.057	7.337	5.334	3.084	4.268	6.060	7.699	6.665	4.376	2.886
69.0	7.846	7.055	4.917	2.557	3.941	5.819	7.493	6.424	4.024	2.348
72.0	7.630	6.814	4.565	2.024	3.625	5.578	7.281	6.193	3.693	1.826
75.0	7.414	6.593	4.238	1.512	3.333	5.347	7.060	5.951	3.386	1.338
78.0	7.183	6.357	3.931	1.049	3.072	5.126	6.844	5.710	3.120	0.8907
81.0	6.946	6.121	3.620	0.6272	2.835	4.910	6.628	5.494	2.874	0.5085
84.0	6.720	5.899	3.358	0.3057	2.644	4.703	6.377	5.268	2.683	0.2020
87.0	6.469	5.658	3.142	0.1917	2.478	4.498	6.156	5.051	2.497	0.1007
90.0	6.233	5.432	2.966	0.1637	2.337	4.297	5.925	4.835	2.341	0.0855
93.0	6.002	5.211	2.815	0.1462	2.232	4.136	5.698	4.629	2.221	0.0854
96.0	5.776	5.015	2.699	0.1496	2.161	3.985	5.482	4.443	2.131	0.0854
99.0	5.554	4.697	2.624	0.1508	2.096	3.632	5.260	4.028	2.065	0.0854
102.0	5.228	4.302	2.563	0.1630	2.046	3.447	4.960	3.860	2.040	0.0854
105.0	5.031	4.216	2.308	0.1738	1.655	3.392	4.779	3.775	1.728	0.0854
108.0	4.831	4.086	2.263	0.1810	1.568	3.292	4.603	3.679	1.668	0.0904
111.0	4.655	3.975	2.236	0.2011	1.481	3.196	4.422	3.579	1.603	0.1146
114.0	4.464	3.849	2.162	0.2212	1.422	2.945	4.266	3.438	1.533	0.1272
117.0	4.303	3.744	2.186	0.2613	1.422	2.789	3.960	3.272	1.525	0.1407
120.0	4.162	3.643	2.017	0.2865	1.423	2.683	3.809	3.126	1.518	0.1908
123.0	4.016	3.548	1.624	0.3167	1.407	2.608	3.668	2.996	1.510	0.2143
126.0	3.880	3.452	1.584	0.3418	1.352	2.436	3.533	2.815	1.493	0.2194
129.0	3.740	3.346	1.578	0.3619	1.277	2.387	3.397	2.739	1.447	0.2311
132.0	3.604	3.075	1.548	0.3920	1.191	2.276	3.112	2.674	1.412	0.2463
135.0	3.463	2.804	1.533	0.4121	1.131	2.146	3.126	2.574	1.321	0.2663
138.0	3.323	2.522	1.518	0.4272	1.046	1.990	2.970	2.488	1.246	0.2764
141.0	3.187	2.281	1.473	0.4424	0.9402	1.844	2.685	2.353	1.146	0.2854
144.0	3.046	2.115	1.458	0.4573	0.8697	1.668	2.678	2.197	1.075	0.2975
147.0	2.900	1.940	1.417	0.4680	0.8694	1.512	2.547	2.071	1.000	0.3116
150.0	2.760	1.753	1.377	0.4694	0.8795	1.356	2.372	1.920	0.9396	0.3367
153.0	2.619	1.527	1.332	0.4708	0.8043	1.201	2.216	1.760	0.9111	0.3618
156.0	2.473	1.296	1.382	0.4723	0.8166	1.030	2.035	1.558	0.8826	0.3969
159.0	2.252	0.8785	1.401	0.4737	0.8290	0.9549	1.822	1.468	0.8541	0.4372
162.0	1.931	0.6232	1.406	0.4752	0.4912	0.9343	1.563	1.332	0.7316	0.4623
165.0	1.670	0.6792	1.409	0.4766	0.2602	0.9014	1.477	1.151	0.5089	0.4974
168.0	0.8310	0.9347	1.408	0.4781	0.2557	0.8789	0.7373	0.9503	0.4395	0.5276
171.0	0.7191	0.9247	1.407	0.4795	0.2505	0.6577	0.5172	0.7949	0.3700	0.5578
174.0	0.6236	0.8592	1.337	0.4810	0.2450	0.4445	0.4372	0.4184	0.3006	0.6029
177.0	0.5130	0.7219	1.207	0.4824	0.2412	0.2312	0.3059	0.2516	0.2312	0.6081
180.0	0.2412	0.2312	0.3820	0.4624	0.6031	0.4624	0.2412	0.2362	0.2312	0.6634
G/C	300.0	330.0								
0.0	10.83	10.80								
3.0	10.83	10.89								
6.0	10.82	10.97								
9.0	10.81	11.00								
12.0	10.73	11.02								
15.0	10.61	11.01								
18.0	10.47	11.00								
21.0	10.27	10.93								
24.0	10.07	10.83								
27.0	9.809	10.72								
30.0	9.548	10.59								

C Range: 0 - 360DEG
 C Interval: 30.0DEG
 Test Speed: HIGH
 Temperature: 25.3DEG
 Operators: LPC
 Test Date: 2021-11-30

γ Range: 0 - 180DEG
 γ Interval: 1.0DEG
 Test System: EVERFINE GO-2000B_V1 SYSTEM V2.0.362
 Humidity: 65.0%
 Test Distance: 9.200m [K=1.0000]
 Remarks:

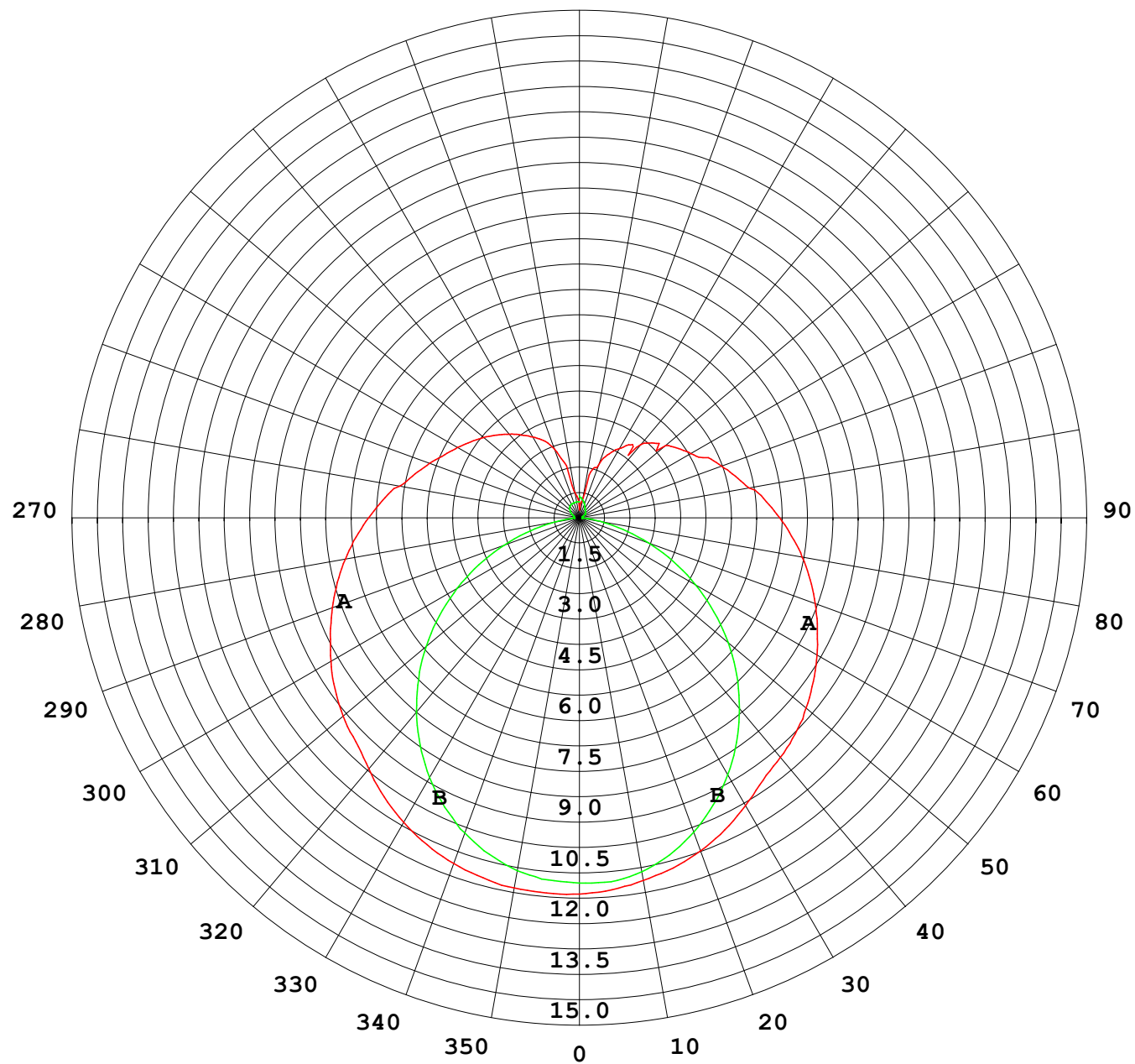
Photometric Data Table [cd]

33.0	9.282	10.44
36.0	9.000	10.29
39.0	8.713	10.11
42.0	8.407	9.906
45.0	8.075	9.680
48.0	7.738	9.434
51.0	7.386	9.183
54.0	7.015	8.911
57.0	6.648	8.615
60.0	6.250	8.333
63.0	5.843	8.117
66.0	5.436	7.911
69.0	5.029	7.695
72.0	4.632	7.464
75.0	4.301	7.228
78.0	3.994	6.986
81.0	3.698	6.755
84.0	3.411	6.539
87.0	3.186	6.313
90.0	3.005	6.102
93.0	2.844	5.886
96.0	2.719	5.675
99.0	2.628	5.334
102.0	2.552	4.910
105.0	2.419	4.785
108.0	2.302	4.664
111.0	2.281	4.524
114.0	2.209	4.368
117.0	2.116	4.167
120.0	2.116	4.021
123.0	2.046	3.930
126.0	1.990	3.695
129.0	1.960	3.553
132.0	1.890	3.257
135.0	1.834	3.097
138.0	1.723	2.760
141.0	1.648	2.579
144.0	1.563	2.403
147.0	1.487	2.232
150.0	1.402	2.101
153.0	1.392	1.951
156.0	1.453	1.790
159.0	1.481	1.609
162.0	1.485	1.453
165.0	1.490	1.337
168.0	1.494	1.327
171.0	1.498	1.347
174.0	1.452	1.344
177.0	1.406	1.342
180.0	0.6131	0.4674

C Range: 0 - 360DEG
C Interval: 30.0DEG
Test Speed: HIGH
Temperature:25.3DEG
Operators:LPC
Test Date:2021-11-30

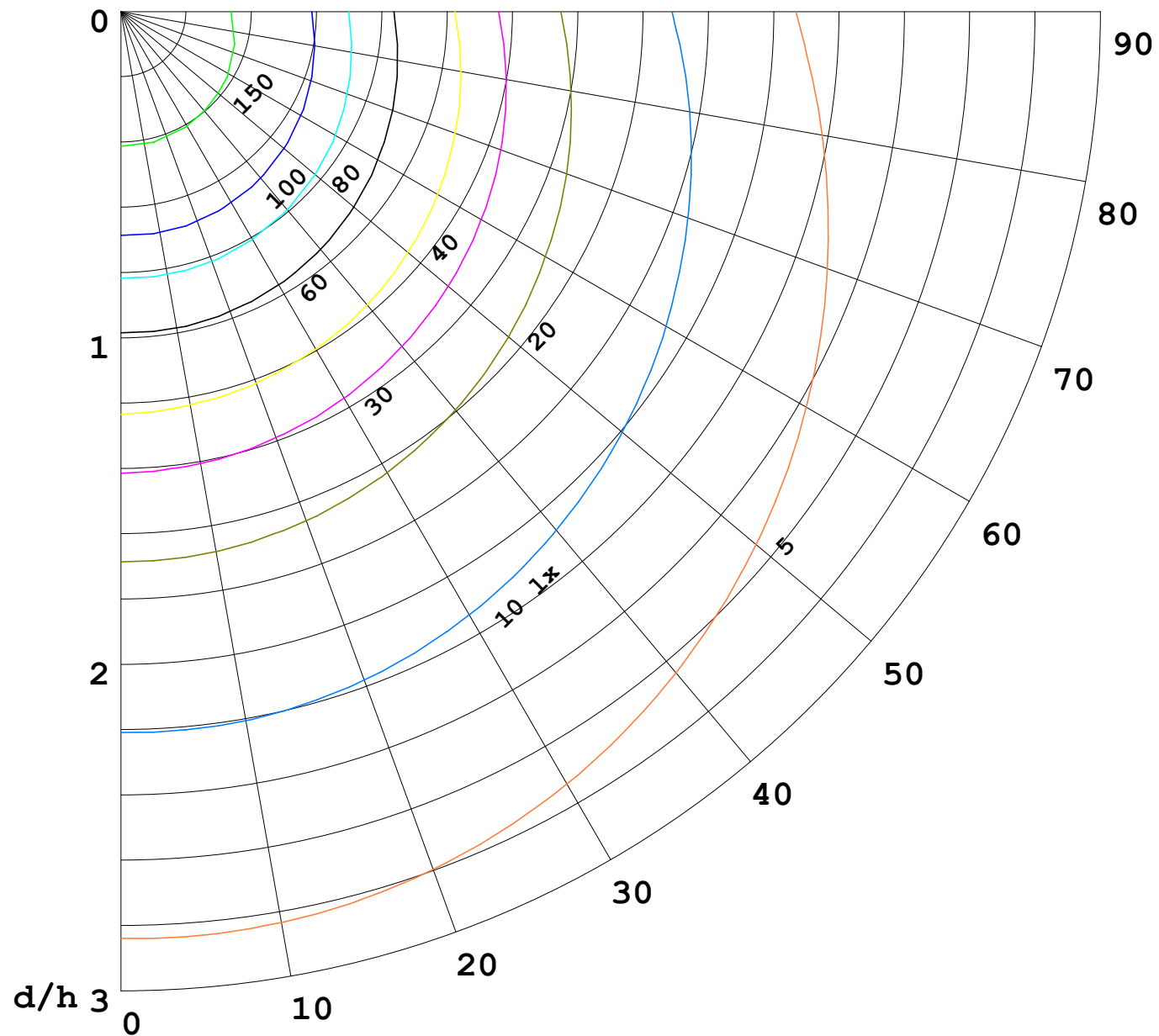
γ Range: 0 - 180DEG
γ Interval: 1.0DEG
Test System:EVERFINE GO-2000B_V1 SYSTEM V2.0.362
Humidity:65.0%
Test Distance:9.200m [K=1.0000]
Remarks:

I (cd)



1000 lm

$\kappa = 1$



F = 5000 lm
 K = 0.7
 Hcc = 0.0 m
 Hfc = 0.0 m
 Eave = 100 lx

	Pcc	Pw	Pfc
—	70	50	30
—	50	30	20

