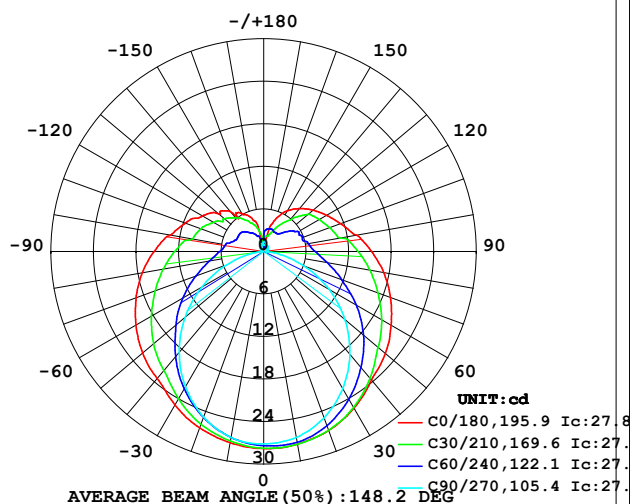


LUMINAIRE PHOTOMETRIC TEST REPORT

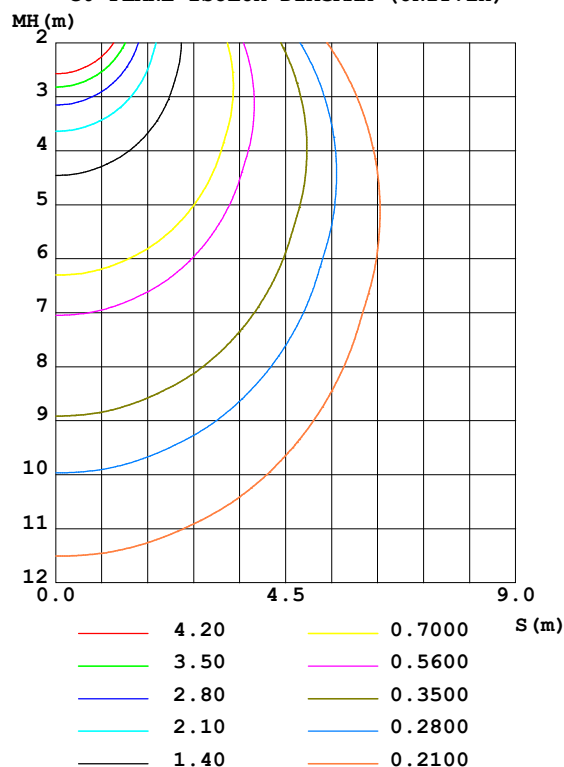
Test:U:24.00V I:0.2264A P:5.434W PF:1.000 Freq:0Hz Lamp Flux:143.349x1 lm		
NAME: SF21-24V-3528-72-2700-80	TYPE: 硅胶	WEIGHT:
SPEC.:	DIM.: 28mm*11.5mm	SERIAL No.:2021112908
MFR.: OLYMPIA	SUR.:1*0.016	Shielding Angle:

DATA OF LAMP		PHOTOMETRIC DATA Eff: 26.38 lm/W			
MODEL	3528	I _{max} (cd)	27.81	S/MH (C0/180)	1.35
NOMINAL POWER (W)	5	LOR (%)	100.0	S/MH (C90/270)	1.21
RATED VOLTAGE (V)	24	TOTAL FLUX (lm)	143.35	η UP, DN (C0-180)	12.8, 36.3
NOMINAL FLUX (lm)	143.349	CIE CLASS	SEMI-D.	η UP, DN (C180-360)	13.7, 37.2
LAMPS INSIDE	1	η up (%)	26.5	CIBSE SHR NOM	1.50
TEST VOLTAGE (V)	24.0	η down (%)	73.5	CIBSE SHR MAX	1.55

LUMINOUS INTENSITY DISTRIBUTION DIAGRAM



C0 PLANE ISOLUX DIAGRAM (UNIT: lx)



C Range: 0 - 360DEG
 C Interval: 30.0DEG
 Test Speed: HIGH
 Temperature: 25.3DEG
 Operators: LPC
 Test Date: 2021-11-29

γ Range: 0 - 180DEG
 γ Interval: 1.0DEG
 Test System: EVERFINE GO-2000B_V1 SYSTEM V2.0.362
 Humidity: 65.0%
 Test Distance: 9.200m [K=1.0000]
 Remarks:

ZONAL FLUX DIAGRAM

ZONAL FLUX DIAGRAM:

γ	C0	C45	C90	C135	C180	C225	C270	C315	γ	Φ zone	Φ total	%lum, lamp
10	27.59	27.47	26.65	26.26	27.39	26.90	26.64	27.33	0- 10	2.598	2.598	1.81,1.81
20	26.87	26.48	24.97	24.51	26.48	25.42	24.83	26.56	10- 20	7.478	10.08	7.03,7.03
30	25.51	24.72	22.33	22.21	25.02	23.21	22.08	25.03	20- 30	11.45	21.53	15,15
40	23.66	22.35	18.93	19.89	23.39	20.64	18.55	23.06	30- 40	14.16	35.69	24.9,24.9
50	22.40	19.73	14.96	17.46	22.29	18.23	14.48	20.63	40- 50	15.56	51.25	35.8,35.8
60	20.76	17.15	10.63	14.88	20.81	15.74	10.06	17.91	50- 60	15.69	66.94	46.7,46.7
70	19.04	14.45	6.143	12.41	19.17	13.25	5.572	15.30	60- 70	14.63	81.57	56.9,56.9
80	17.19	12.15	2.063	10.32	17.39	11.08	1.656	12.99	70- 80	12.83	94.40	65.9,65.9
90	15.23	10.30	0.4110	8.717	15.47	9.401	0.2998	11.11	80- 90	10.90	105.3	73.5,73.5
100	13.29	8.696	0.4425	7.330	13.34	7.839	0.3149	9.336	90-100	9.389	114.7	80,80
110	11.54	7.860	0.4971	6.346	11.78	6.936	0.3702	8.539	100-110	7.780	122.5	85.4,85.4
120	10.23	7.325	0.5880	5.573	10.01	6.215	0.4322	7.780	110-120	6.552	129.0	90,90
130	9.093	6.300	0.7037	4.955	8.280	5.687	0.5778	7.001	120-130	5.316	134.3	93.7,93.7
140	7.912	4.543	0.7891	4.139	7.388	4.930	0.7086	5.317	130-140	3.951	138.3	96.5,96.5
150	6.635	3.662	0.9047	3.163	6.095	4.076	0.8743	4.312	140-150	2.598	140.9	98.3,98.3
160	4.786	3.025	0.9311	2.266	4.998	3.157	1.040	3.704	150-160	1.570	142.5	99.4,99.4
170	1.810	2.734	0.9333	0.8726	1.773	1.729	1.181	3.337	160-170	0.7267	143.2	99.9,99.9
180	0.6885	0.6885	0.8795	1.093	0.6885	0.6734	1.352	1.098	170-180	0.1668	143.3	100,100
DEG	LUMINOUS INTENSITY:cd									UNIT:lm		

Conical surface Flux(90deg): 43.374 lm

%lum = 30.3%

%lamp = 30.3%

Conical surface Flux(120deg): 66.935 lm

%lum = 46.7%

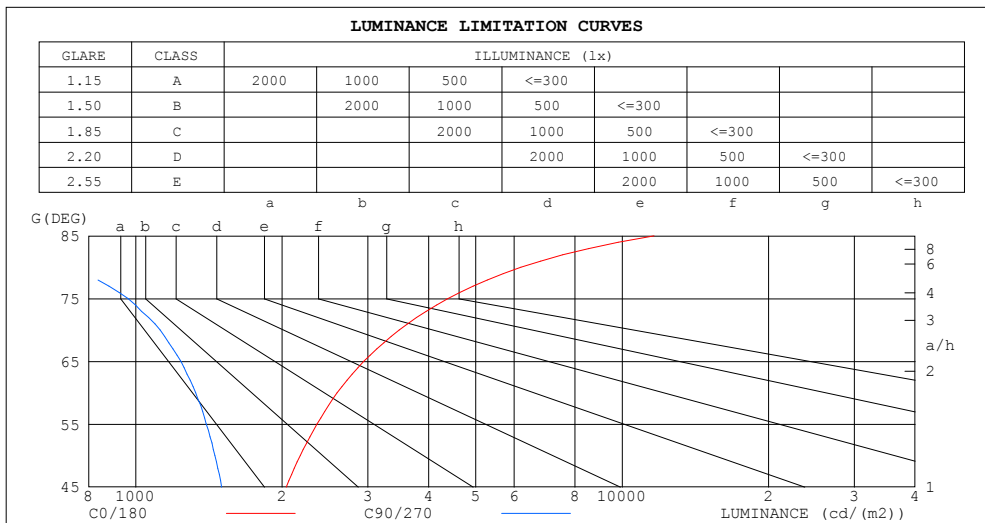
%lamp = 46.7%

C Range: 0 - 360DEG
 C Interval: 30.0DEG
 Test Speed: HIGH
 Temperature:25.3DEG
 Operators:LPC
 Test Date:2021-11-29

γ Range: 0 - 180DEG
 γ Interval: 1.0DEG
 Test System:EVERFINE GO-2000B_V1 SYSTEM V2.0.362
 Humidity:65.0%
 Test Distance:9.200m [K=1.0000]
 Remarks:

LUMINANCE LIMITATION CURVES

Test:U:24.00V I:0.2264A P:5.434W PF:1.000 Freq:0Hz Lamp Flux:143.349x1 lm		
NAME: SF21-24V-3528-72-2700-80	TYPE: 硅胶	WEIGHT:
SPEC.:	DIM.: 28mm*11.5mm	SERIAL No.:2021112908
MFR.: OLYMPIA	SUR.:1*0.016	Shielding Angle:



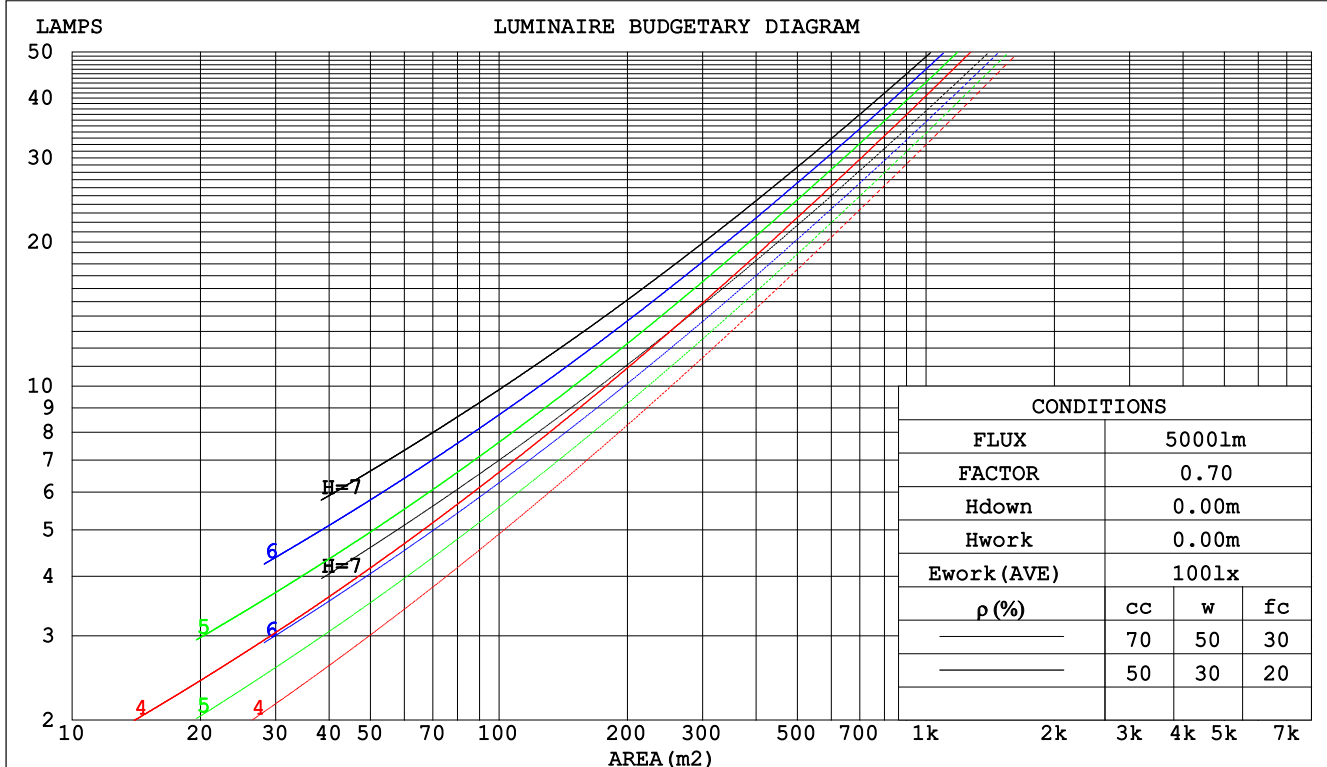
C Range: 0 - 360DEG
C Interval: 30.0DEG
Test Speed: HIGH
Temperature:25.3DEG
Operators:LPC
Test Date:2021-11-29

γ Range: 0 - 180DEG
γ Interval: 1.0DEG
Test System:EVERFINE GO-2000B_V1 SYSTEM V2.0.362
Humidity:65.0%
Test Distance:9.200m [K=1.0000]
Remarks:

CU AND LUMINAIRE BUDGETARY ESTIMATE DIAGRAM

Test:U:24.00V I:0.2264A P:5.434W PF:1.000 Freq:0Hz Lamp Flux:143.349x1 lm		
NAME: SF21-24V-3528-72-2700-80	TYPE: 硅胶	WEIGHT:
SPEC.:	DIM.: 28mm*11.5mm	SERIAL No.:2021112908
MFR.: OLYMPIA	SUR.:1*0.016	Shielding Angle:

pcc	80%			70%			50%			30%			10%			0
pw	50%	30%	10%	50%	30%	10%	50%	30%	10%	50%	30%	10%	50%	30%	10%	0
pfc	20%			20%			20%			20%			20%			0
RCR	RCR:Room Cavity Ratio						Coefficients of Utilization(CU)									
0.0	1.13	1.13	1.13	1.07	1.07	1.07	.96	.96	.96	.87	.87	.87	.78	.78	.78	.73
1.0	.94	.88	.84	.89	.84	.80	.80	.76	.72	.71	.68	.65	.63	.61	.59	.55
2.0	.80	.72	.66	.76	.69	.63	.68	.62	.57	.61	.56	.52	.54	.50	.47	.43
3.0	.69	.61	.53	.66	.58	.51	.59	.52	.47	.53	.47	.43	.47	.43	.39	.35
4.0	.61	.52	.44	.58	.49	.43	.52	.45	.39	.46	.41	.36	.41	.37	.33	.30
5.0	.54	.45	.38	.51	.43	.36	.46	.39	.33	.41	.35	.31	.37	.32	.28	.25
6.0	.48	.39	.33	.46	.37	.31	.41	.34	.29	.37	.31	.27	.33	.28	.24	.22
7.0	.44	.35	.28	.42	.33	.27	.38	.31	.25	.34	.28	.23	.30	.25	.21	.19
8.0	.40	.31	.25	.38	.30	.24	.34	.27	.22	.31	.25	.21	.28	.23	.19	.17
9.0	.36	.28	.22	.35	.27	.22	.31	.25	.20	.28	.23	.19	.26	.21	.17	.15
10.0	.33	.25	.20	.32	.24	.19	.29	.22	.18	.26	.21	.17	.24	.19	.16	.14



C Range: 0 - 360DEG
 C Interval: 30.0DEG
 Test Speed: HIGH
 Temperature:25.3DEG
 Operators:LPC
 Test Date:2021-11-29

γ Range: 0 - 180DEG
 γ Interval: 1.0DEG
 Test System:EVERFINE GO-2000B_V1 SYSTEM V2.0.362
 Humidity:65.0%
 Test Distance:9.200m [K=1.0000]
 Remarks:

WEC AND CCEC

Test:U:24.00V I:0.2264A P:5.434W PF:1.000 Freq:0Hz Lamp Flux:143.349x1 lm		
NAME: SF21-24V-3528-72-2700-80	TYPE: 硅胶	WEIGHT:
SPEC.:	DIM.: 28mm*11.5mm	SERIAL No.:2021112908
MFR.: OLYMPIA	SUR.:1*0.016	Shielding Angle:

pcc	80%			70%			50%			30%			10%			0	
pw	50%	30%	10%	50%	30%	10%	50%	30%	10%	50%	30%	10%	50%	30%	10%	0	
pfc	20%			20%			20%			20%			20%			0	
RCR	RCR:Room Cavity Ratio						Wall Exitance Coeffcients (WEC)										
0.0																	
1.0	.383	.218	.069	.368	.210	.067	.340	.195	.062	.313	.181	.058	.289	.167	.054		
2.0	.330	.181	.055	.316	.174	.054	.290	.161	.050	.266	.149	.047	.244	.138	.043		
3.0	.292	.156	.047	.280	.150	.045	.256	.139	.042	.234	.128	.039	.214	.119	.037		
4.0	.263	.137	.040	.251	.132	.039	.230	.122	.036	.210	.113	.034	.191	.104	.032		
5.0	.239	.122	.035	.228	.117	.034	.209	.109	.032	.191	.101	.030	.173	.093	.028		
6.0	.219	.110	.031	.209	.106	.030	.191	.098	.029	.174	.091	.027	.159	.084	.025		
7.0	.202	.100	.028	.193	.096	.027	.176	.089	.026	.161	.083	.024	.146	.076	.022		
8.0	.187	.091	.026	.179	.088	.025	.164	.082	.023	.149	.076	.022	.136	.070	.020		
9.0	.174	.084	.024	.167	.081	.023	.153	.076	.021	.140	.070	.020	.127	.065	.019		
10.0	.163	.078	.022	.156	.075	.021	.143	.070	.020	.131	.065	.018	.119	.060	.017		

pcc	80%			70%			50%			30%			10%			0	
pw	50%	30%	10%	50%	30%	10%	50%	30%	10%	50%	30%	10%	50%	30%	10%	0	
pfc	20%			20%			20%			20%			20%			0	
RCR	RCR:Room Cavity Ratio						Ceiling Cavity Exitance Coefficients(CCEC)										
0.0	.393	.393	.393	.336	.336	.336	.229	.229	.229	.132	.132	.132	.042	.042	.042		
1.0	.389	.359	.332	.333	.308	.286	.228	.212	.198	.131	.123	.115	.042	.040	.037		
2.0	.383	.337	.299	.328	.290	.258	.225	.201	.180	.129	.117	.106	.042	.038	.034		
3.0	.375	.321	.278	.322	.277	.241	.221	.192	.169	.128	.112	.099	.041	.036	.033		
4.0	.368	.309	.264	.315	.267	.229	.217	.186	.161	.125	.109	.095	.040	.035	.031		
5.0	.360	.299	.254	.309	.259	.221	.213	.181	.156	.123	.106	.093	.040	.035	.031		
6.0	.353	.291	.247	.303	.252	.215	.209	.177	.152	.121	.104	.090	.039	.034	.030		
7.0	.346	.285	.242	.297	.247	.211	.205	.173	.149	.119	.102	.089	.039	.033	.029		
8.0	.339	.279	.238	.292	.242	.208	.202	.170	.147	.118	.100	.088	.038	.033	.029		
9.0	.333	.275	.235	.287	.238	.205	.199	.167	.146	.116	.099	.087	.037	.032	.029		
10.0	.327	.270	.233	.282	.235	.203	.196	.165	.144	.114	.098	.086	.037	.032	.029		

C Range: 0 - 360DEG
 C Interval: 30.0DEG
 Test Speed: HIGH
 Temperature:25.3DEG
 Operators:LPC
 Test Date:2021-11-29

γ Range: 0 - 180DEG
 γ Interval: 1.0DEG
 Test System:EVERFINE GO-2000B_V1 SYSTEM V2.0.362
 Humidity:65.0%
 Test Distance:9.200m [K=1.0000]
 Remarks:

UGR(Unified Glare Rating) Table

Test:U:24.00V I:0.2264A P:5.434W PF:1.000 Freq:0Hz Lamp Flux:143.349x1 lm										
NAME: SF21-24V-3528-72-2700-80					TYPE: 硅胶			WEIGHT:		
SPEC.:					DIM.: 28mm*11.5mm			SERIAL No.:2021112908		
MFR.: OLYMPIA					SUR.:1*0.016			Shielding Angle:		
ceiling/cavity	0.7	0.7	0.5	0.5	0.3	0.7	0.7	0.5	0.5	0.3
walls	0.5	0.3	0.5	0.3	0.3	0.5	0.3	0.5	0.3	0.3
working plane	0.2	0.2	0.2	0.2	0.2	0.2	0.2	0.2	0.2	0.2
Room dimensions	Viewed crosswise					Viewed endwise				
x = 2H y = 2H	21.5	22.7	22.1	23.4	24.1	19.1	20.4	19.7	21.0	21.7
3H	24.3	25.5	24.9	26.1	26.9	20.6	21.7	21.2	22.4	23.1
4H	25.9	27.0	26.6	27.7	28.5	21.1	22.2	21.8	22.9	23.7
6H	27.7	28.7	28.3	29.4	30.2	21.5	22.5	22.1	23.2	24.0
8H	28.7	29.7	29.4	30.4	31.2	21.6	22.6	22.3	23.3	24.1
12H	29.8	30.8	30.5	31.5	32.3	21.6	22.6	22.3	23.3	24.1
4H 2H	22.0	23.1	22.7	23.8	24.6	20.4	21.5	21.0	22.1	22.9
3H	25.1	26.1	25.8	26.8	27.6	22.2	23.1	22.8	23.8	24.7
4H	26.9	27.8	27.6	28.5	29.4	23.0	23.8	23.7	24.6	25.4
6H	28.9	29.7	29.6	30.4	31.3	23.6	24.4	24.3	25.1	26.0
8H	30.0	30.7	30.8	31.5	32.4	23.8	24.5	24.6	25.3	26.2
12H	31.3	32.0	32.1	32.7	33.7	23.9	24.6	24.7	25.4	26.3
8H 4H	27.3	28.0	28.0	28.8	29.7	24.2	25.0	25.0	25.7	26.6
6H	29.6	30.2	30.4	31.0	31.9	25.3	26.0	26.1	26.7	27.7
8H	30.9	31.5	31.7	32.3	33.2	25.8	26.4	26.6	27.2	28.2
12H	32.4	32.9	33.3	33.8	34.8	26.2	26.7	27.0	27.5	28.5
12H 4H	27.3	28.0	28.1	28.7	29.7	24.7	25.3	25.4	26.1	27.1
6H	29.7	30.3	30.5	31.1	32.0	26.0	26.6	26.8	27.4	28.4
8H	31.2	31.6	32.0	32.5	33.5	26.7	27.2	27.5	28.0	29.0
Variations with the observer position at spacings:										
S = 1.0H	+ 0.1 / - 0.1					+ 0.1 / - 0.1				
1.5H	+ 0.2 / - 0.3					+ 0.2 / - 0.3				
2.0H	+ 0.3 / - 0.4					+ 0.3 / - 0.4				

CIE Pub.117, 143.3 lm Total Lamp Luminous Flux Correct (8log(F/F0) = -6.7)

C Range: 0 - 360DEG
 C Interval: 30.0DEG
 Test Speed: HIGH
 Temperature:25.3DEG
 Operators:LPC
 Test Date:2021-11-29

γ Range: 0 - 180DEG
 γ Interval: 1.0DEG
 Test System:EVERFINE GO-2000B_V1 SYSTEM V2.0.362
 Humidity:65.0%
 Test Distance:9.200m [K=1.0000]
 Remarks:

UTILIZATION FACTORS TABLE

Test:U:24.00V I:0.2264A P:5.434W PF:1.000 Freq:0Hz Lamp Flux:143.349x1 lm		
NAME: SF21-24V-3528-72-2700-80	TYPE: 硅胶	WEIGHT:
SPEC.:	DIM.: 28mm*11.5mm	SERIAL No.:2021112908
MFR.: OLYMPIA	SUR.:1*0.016	Shielding Angle:

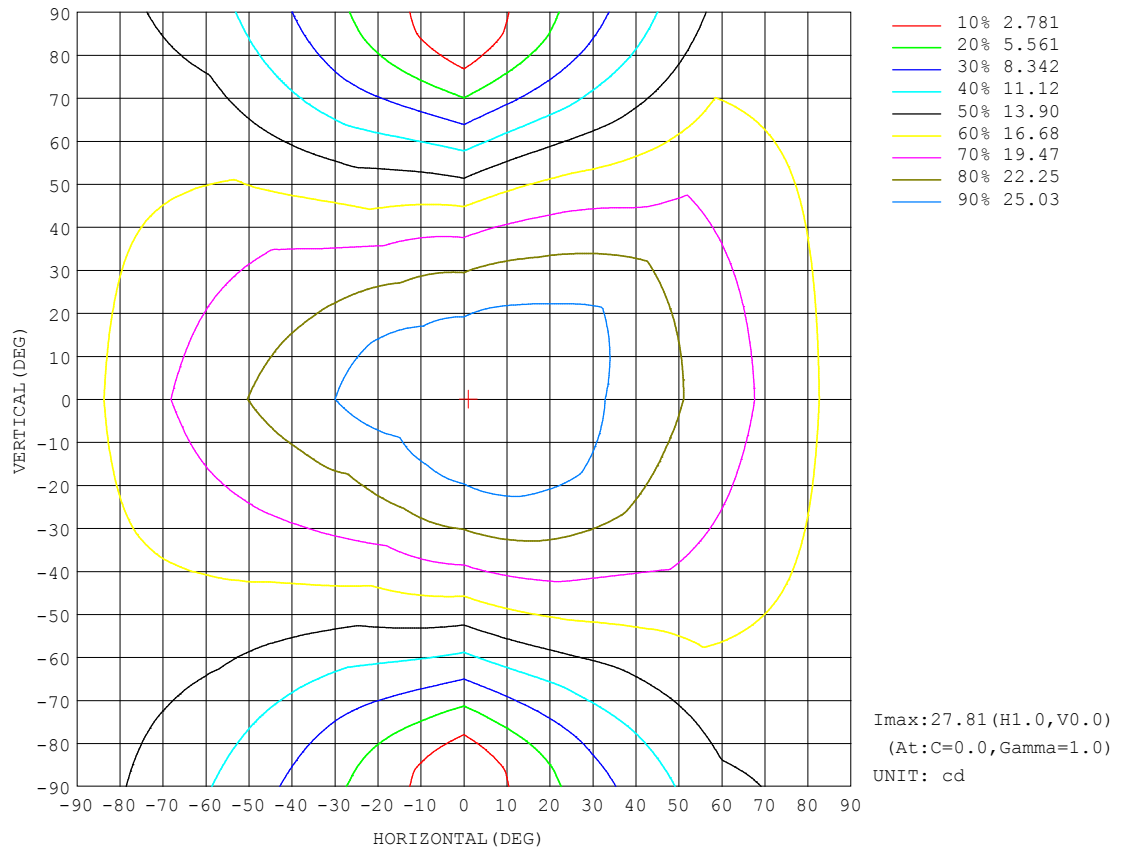
REFLECTANCE										
Ceiling	0.8	0.8	0.8	0.7	0.7	0.7	0.5	0.5	0.5	0
Walls	0.7	0.5	0.3	0.7	0.5	0.3	0.7	0.5	0.3	0
Working plane	0.2	0.2	0.2	0.2	0.2	0.2	0.2	0.2	0.2	0
ROOM INDEX	UTILIZATION FACTORS (PERCENT) $k(RI) \times RCR = 5$									
$k = 0.60$	45	33	26	44	32	25	42	31	25	18
0.80	54	41	33	52	40	33	49	38	32	23
1.00	62	49	40	60	47	40	55	47	38	29
1.25	69	56	47	66	54	46	61	51	44	33
1.50	74	61	53	71	59	51	65	55	49	37
2.00	81	70	61	78	67	60	71	62	56	43
2.50	86	75	67	82	72	65	74	67	61	46
3.00	90	80	72	85	77	70	77	70	65	49
4.00	94	86	79	90	82	76	81	75	70	53
5.00	97	90	84	93	86	81	84	79	74	56
ROOM INDEX	UF(total)									Direct
According to DIN EN 13032-2 2004			Suspended					SHRNOM = 1.25		

C Range: 0 - 360DEG
 C Interval: 30.0DEG
 Test Speed: HIGH
 Temperature:25.3DEG
 Operators:LPC
 Test Date:2021-11-29

γ Range: 0 - 180DEG
 γ Interval: 1.0DEG
 Test System:EVERFINE GO-2000B_V1 SYSTEM V2.0.362
 Humidity:65.0%
 Test Distance:9.200m [K=1.0000]
 Remarks:

ISOCANDELA DIAGRAM

Test:U:24.00V I:0.2264A P:5.434W PF:1.000 Freq:0Hz Lamp Flux:143.349x1 lm		
NAME: SF21-24V-3528-72-2700-80	TYPE: 硅胶	WEIGHT:
SPEC.:	DIM.: 28mm*11.5mm	SERIAL No.:2021112908
MFR.: OLYMPIA	SUR.:1*0.016	Shielding Angle:

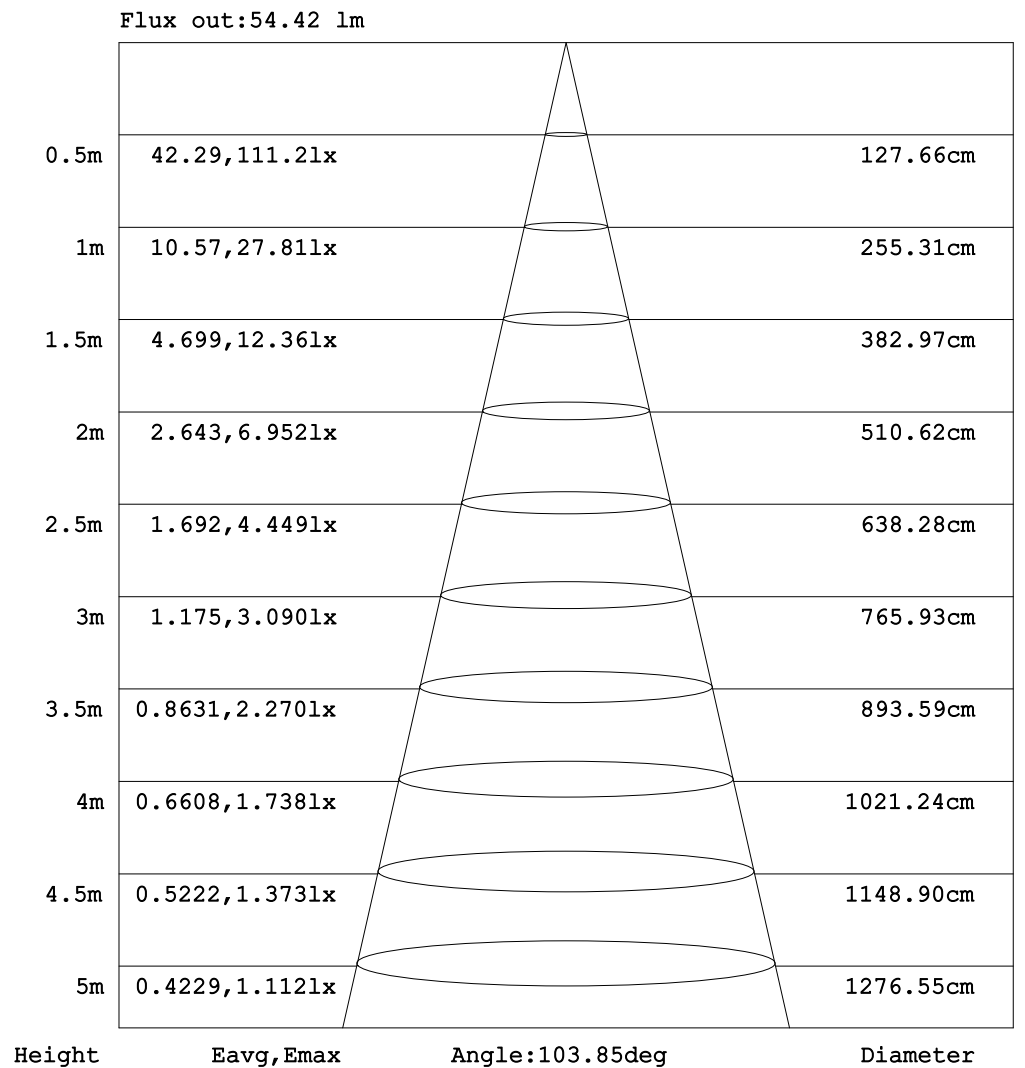


C Range: 0 - 360DEG
C Interval: 30.0DEG
Test Speed: HIGH
Temperature:25.3DEG
Operators:LPC
Test Date:2021-11-29

γ Range: 0 - 180DEG
 γ Interval: 1.0DEG
Test System:EVERFINE GO-2000B_V1 SYSTEM V2.0.362
Humidity:65.0%
Test Distance:9.200m [K=1.0000]
Remarks:

AAI Figure

Test:U:24.00V I:0.2264A P:5.434W PF:1.000 Freq:0Hz Lamp Flux:143.349x1 lm		
NAME: SF21-24V-3528-72-2700-80	TYPE: 硅胶	WEIGHT:
SPEC.:	DIM.: 28mm*11.5mm	SERIAL No.:2021112908
MFR.: OLYMPIA	SUR.:1*0.016	Shielding Angle:



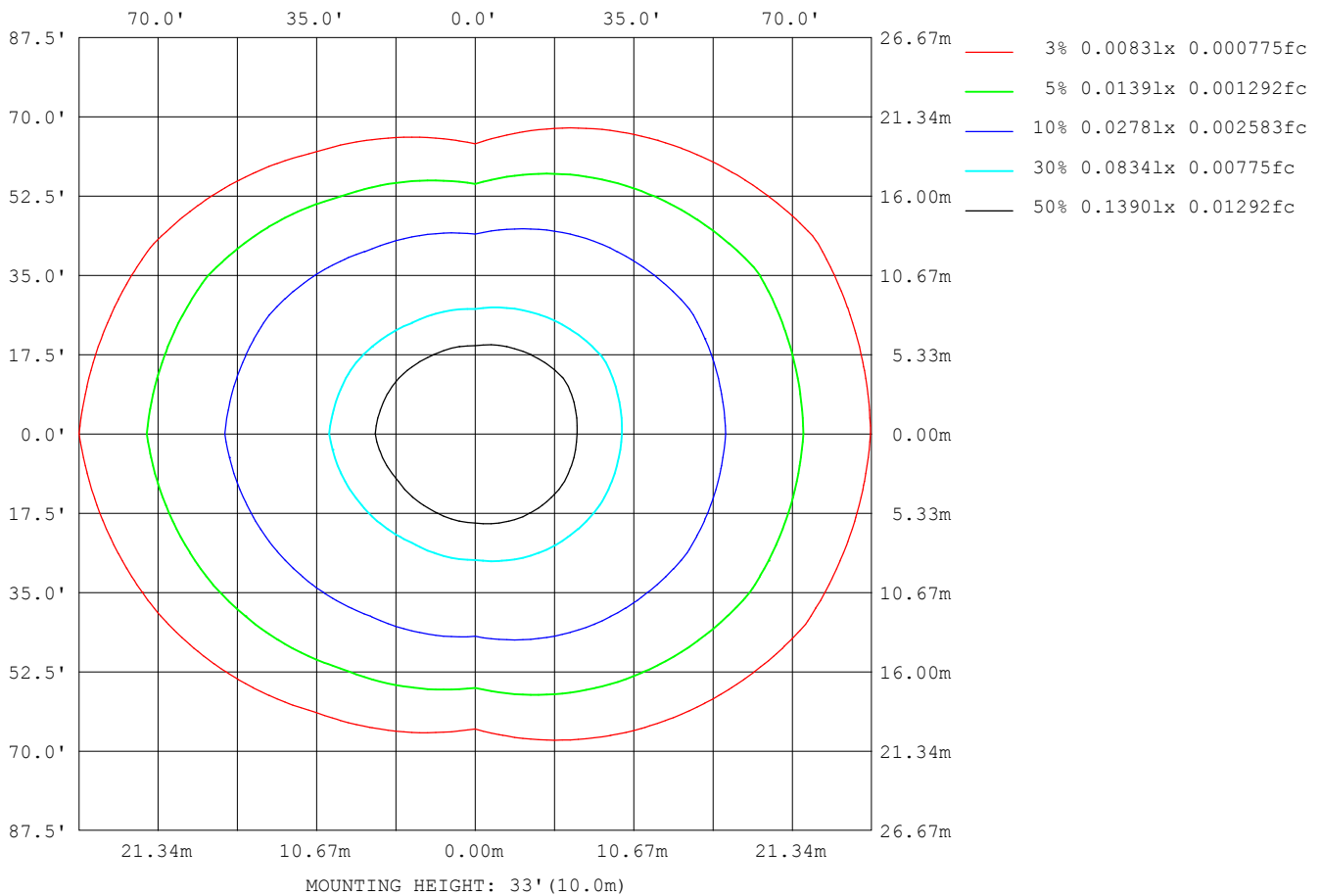
Note: The Curves indicate the illuminated area and the average illumination when the luminaire is at different distance.

C Range: 0 - 360DEG
 C Interval: 30.0DEG
 Test Speed: HIGH
 Temperature: 25.3DEG
 Operators: LPC
 Test Date: 2021-11-29

γ Range: 0 - 180DEG
 γ Interval: 1.0DEG
 Test System: EVERFINE GO-2000B_V1 SYSTEM V2.0.362
 Humidity: 65.0%
 Test Distance: 9.200m [K=1.0000]
 Remarks:

ISOLUX DIAGRAM

Test:U:24.00V I:0.2264A P:5.434W PF:1.000 Freq:0Hz Lamp Flux:143.349x1 lm		
NAME: SF21-24V-3528-72-2700-80	TYPE: 硅胶	WEIGHT:
SPEC.:	DIM.: 28mm*11.5mm	SERIAL No.:2021112908
MFR.: OLYMPIA	SUR.:1*0.016	Shielding Angle:



C Range: 0 - 360DEG
C Interval: 30.0DEG
Test Speed: HIGH
Temperature:25.3DEG
Operators:LPC
Test Date:2021-11-29

γ Range: 0 - 180DEG
 γ Interval: 1.0DEG
Test System:EVERFINE GO-2000B_V1 SYSTEM V2.0.362
Humidity:65.0%
Test Distance:9.200m [K=1.0000]
Remarks:

LED Avg.L Report

Test:U:24.00V I:0.2264A P:5.434W PF:1.000 Freq:0Hz Lamp Flux:143.349x1 lm		
NAME: SF21-24V-3528-72-2700-80	TYPE:硅胶	WEIGHT:
SPEC.:	DIM.: 28mm*11.5mm	SERIAL No.:2021112908
MFR.: OLYMPIA	SUR.:1*0.016	Shielding Angle:

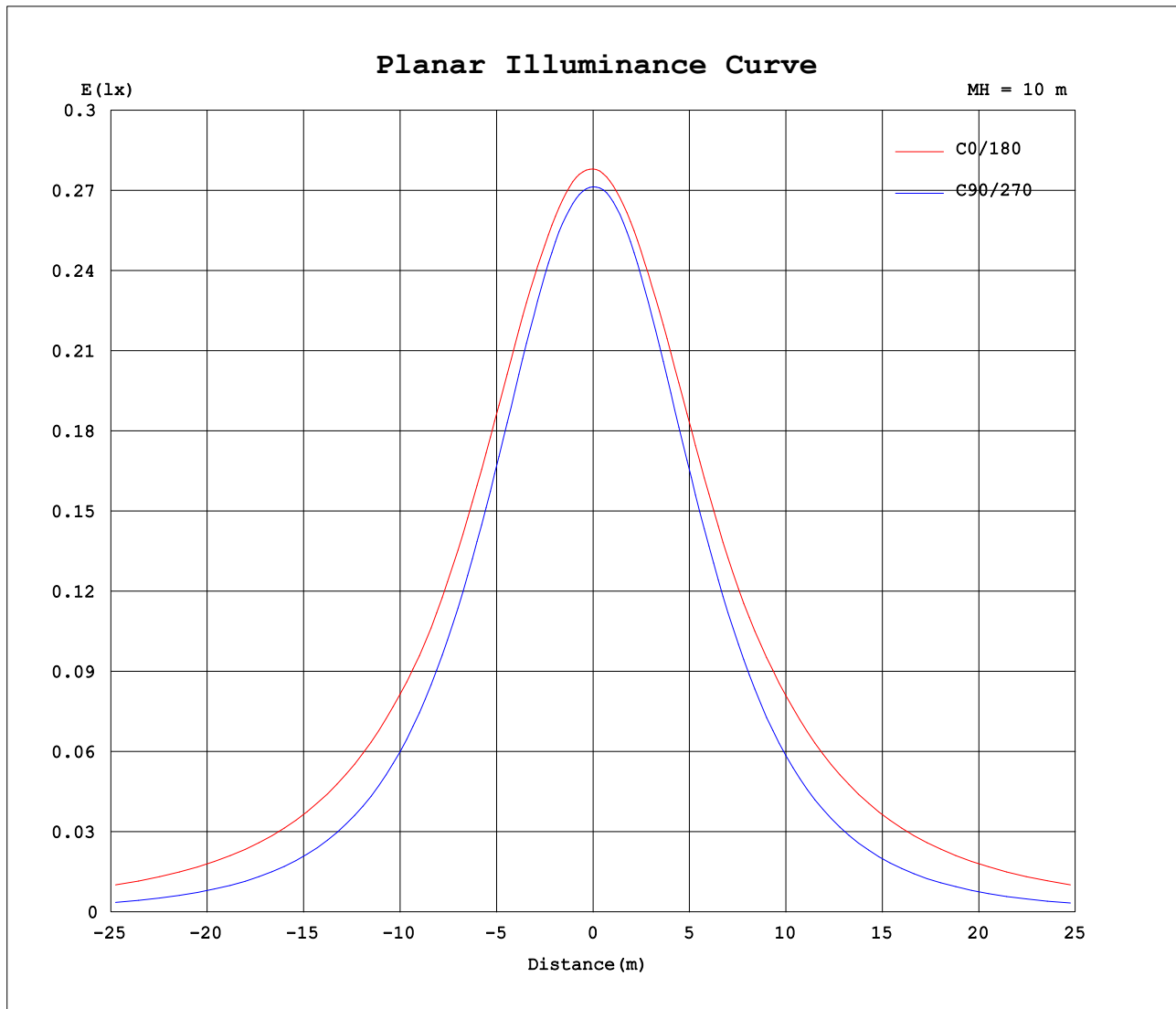
AvgL	cd/m2
L_0~180 (65) av	2948
L_0~180 (75) av	4399
L_0~180 (85) av	11702
L_90~270 (65) av	1197
L_90~270 (75) av	902
L_90~270 (85) av	389
L_45 (65) av	2256
L_45 (75) av	3120
L_45 (85) av	7871

Standard: GB/T 29293-2012

C Range: 0 - 360DEG
C Interval: 30.0DEG
Test Speed: HIGH
Temperature:25.3DEG
Operators:LPC
Test Date:2021-11-29

γ Range: 0 - 180DEG
γ Interval: 1.0DEG
Test System:EVERFINE GO-2000B_V1 SYSTEM V2.0.362
Humidity:65.0%
Test Distance:9.200m [K=1.0000]
Remarks:

Planar Illuminance Curve



C Range: 0 - 360DEG
C Interval: 30.0DEG
Test Speed: HIGH
Temperature: 25.3DEG
Operators: LPC
Test Date: 2021-11-29

γ Range: 0 - 180DEG
 γ Interval: 1.0DEG
Test System: EVERFINE GO-2000B_V1 SYSTEM V2.0.362
Humidity: 65.0%
Test Distance: 9.200m [K=1.0000]
Remarks:

LUMINOUS DISTRIBUTION INTENSITY DATA

Test:U:24.00V I:0.2264A P:5.434W PF:1.000 Freq:0Hz Lamp Flux:143.349x1 lm		
NAME: SF21-24V-3528-72-2700-80	TYPE: 硅胶	WEIGHT:
SPEC.:	DIM.: 28mm*11.5mm	SERIAL No.:2021112908
MFR.: OLYMPIA	SUR.:1*0.016	Shielding Angle:

Table--1

UNIT: cd

C (DEG) γ (DEG)	0	30	60	90	120	150	180	210	240	270	300	330						
0	27.8	27.8	27.4	27.1	27.2	27.2	27.8	27.8	27.4	27.1	27.2	27.2						
5	27.8	27.8	27.5	27.0	26.8	26.7	27.7	27.5	27.1	27.1	27.2	27.5						
10	27.6	27.6	27.3	26.6	26.3	26.2	27.4	27.2	26.6	26.6	27.1	27.6						
15	27.3	27.3	26.9	25.9	25.5	25.4	27.0	26.6	25.9	25.9	26.7	27.5						
20	26.9	26.8	26.1	25.0	24.5	24.5	26.5	25.9	24.9	24.8	25.9	27.2						
25	26.3	26.2	25.2	23.8	23.3	23.5	25.8	25.0	23.7	23.5	25.0	26.7						
30	25.5	25.4	24.1	22.3	21.9	22.5	25.0	24.0	22.4	22.1	23.9	26.1						
35	24.6	24.4	22.7	20.7	20.4	21.8	24.1	22.9	20.9	20.4	22.7	25.5						
40	23.7	23.4	21.3	18.9	18.8	21.0	23.4	21.9	19.4	18.6	21.5	24.7						
45	23.1	22.2	19.9	17.0	17.4	20.0	22.9	21.2	17.7	16.6	20.1	23.7						
50	22.4	21.1	18.4	15.0	15.9	19.0	22.3	20.3	16.2	14.5	18.7	22.6						
55	21.6	20.2	16.8	12.8	14.4	18.0	21.6	19.3	14.7	12.3	17.1	21.4						
60	20.8	19.2	15.1	10.6	12.8	17.0	20.8	18.3	13.2	10.1	15.4	20.4						
65	19.9	18.2	13.3	8.37	11.3	16.0	20.0	17.3	11.7	7.82	13.7	19.5						
70	19.0	17.2	11.8	6.14	9.85	15.0	19.2	16.3	10.2	5.57	12.0	18.6						
75	18.1	16.2	10.4	4.00	8.63	14.0	18.3	15.3	8.88	3.47	10.6	17.6						
80	17.2	15.2	9.08	2.06	7.55	13.1	17.4	14.4	7.77	1.66	9.35	16.6						
85	16.2	14.3	8.06	0.68	6.73	12.2	16.4	13.5	6.87	0.41	8.24	15.7						
90	15.2	13.3	7.26	0.41	6.07	11.4	15.5	12.6	6.23	0.30	7.42	14.8						
95	14.3	12.5	6.73	0.41	5.67	10.7	14.5	11.8	5.73	0.31	6.85	13.9						
100	13.3	11.0	6.42	0.44	5.45	9.21	13.3	10.2	5.49	0.31	6.53	12.1						
105	12.3	10.4	5.81	0.47	4.44	8.96	12.5	9.86	4.90	0.36	5.93	11.7						
110	11.5	9.91	5.81	0.50	4.08	8.61	11.8	9.42	4.45	0.37	5.97	11.1						
115	10.9	9.45	5.55	0.54	3.98	7.75	11.1	8.87	4.23	0.38	5.93	10.6						
120	10.2	9.05	5.60	0.59	3.93	7.22	10.0	8.23	4.20	0.43	5.50	10.1						
125	9.66	8.66	5.11	0.64	3.86	6.63	9.40	7.45	4.23	0.51	5.25	9.61						
130	9.09	8.19	4.41	0.70	3.49	6.42	8.28	7.22	4.16	0.58	4.95	9.05						
135	8.51	7.02	3.73	0.75	3.28	5.99	8.15	6.72	3.94	0.64	4.62	7.96						
140	7.91	5.83	3.26	0.79	2.93	5.35	7.39	6.26	3.60	0.71	4.17	6.46						
145	7.30	5.04	3.16	0.83	2.55	4.65	6.59	5.73	3.23	0.77	3.81	5.72						
150	6.64	4.17	3.16	0.90	2.35	3.97	6.09	5.15	3.00	0.87	3.51	5.11						
155	5.78	3.35	3.26	0.93	2.10	3.28	5.72	4.43	2.60	0.95	3.50	4.48						
160	4.79	2.68	3.37	0.93	1.88	2.65	5.00	4.00	2.32	1.04	3.61	3.80						
165	3.75	2.28	3.34	0.93	0.71	2.41	4.33	3.38	1.51	1.13	3.64	3.22						
170	1.81	2.24	3.23	0.93	0.70	1.04	1.77	2.62	0.83	1.18	3.42	3.26						
175	1.49	2.04	3.01	0.93	0.68	0.67	1.32	1.65	0.71	1.27	3.29	3.20						
180	0.69	0.68	0.69	0.88	1.28	0.91	0.69	0.68	0.66	1.35	1.28	0.91						

C Range: 0 - 360DEG
C Interval: 30.0DEG
Test Speed: HIGH
Temperature:25.3DEG
Operators:LPC
Test Date:2021-11-29

γ Range: 0 - 180DEG
γ Interval: 1.0DEG
Test System:EVERFINE GO-2000B_V1 SYSTEM V2.0.362
Humidity:65.0%
Test Distance:9.200m [K=1.0000]
Remarks:

Photometric Data Table [cd]

G/C	0.0	30.0	60.0	90.0	120.0	150.0	180.0	210.0	240.0	270.0
0.0	27.81	27.76	27.39	27.14	27.16	27.17	27.81	27.76	27.39	27.14
3.0	27.81	27.78	27.44	27.08	26.98	26.92	27.75	27.65	27.26	27.14
6.0	27.78	27.76	27.45	26.94	26.73	26.65	27.63	27.48	27.05	27.01
9.0	27.65	27.66	27.37	26.73	26.43	26.32	27.45	27.26	26.77	26.76
12.0	27.46	27.50	27.21	26.37	26.04	25.92	27.24	26.95	26.36	26.36
15.0	27.27	27.29	26.86	25.94	25.52	25.43	26.97	26.60	25.88	25.87
18.0	27.06	27.02	26.45	25.36	24.92	24.90	26.69	26.23	25.32	25.28
21.0	26.76	26.72	25.96	24.73	24.25	24.32	26.37	25.77	24.68	24.60
24.0	26.39	26.33	25.38	24.01	23.52	23.69	25.97	25.23	23.98	23.81
27.0	25.97	25.89	24.75	23.19	22.74	23.03	25.52	24.65	23.21	22.99
30.0	25.51	25.39	24.05	22.33	21.91	22.51	25.02	24.03	22.39	22.08
33.0	25.00	24.82	23.28	21.37	21.01	22.10	24.48	23.35	21.55	21.08
36.0	24.46	24.22	22.47	20.35	20.10	21.64	23.93	22.67	20.63	20.04
39.0	23.86	23.58	21.64	19.30	19.15	21.14	23.48	22.07	19.68	18.92
42.0	23.38	22.91	20.77	18.17	18.22	20.58	23.22	21.63	18.70	17.76
45.0	23.06	22.17	19.91	16.99	17.38	19.99	22.91	21.16	17.70	16.59
48.0	22.67	21.45	19.03	15.79	16.53	19.42	22.55	20.64	16.75	15.34
51.0	22.26	20.91	18.08	14.54	15.62	18.80	22.16	20.08	15.90	14.06
54.0	21.81	20.40	17.09	13.26	14.69	18.17	21.74	19.52	15.02	12.76
57.0	21.30	19.83	16.10	11.97	13.75	17.55	21.29	18.90	14.11	11.43
60.0	20.76	19.24	15.07	10.63	12.81	16.96	20.81	18.29	13.19	10.06
63.0	20.25	18.63	14.04	9.263	11.89	16.35	20.32	17.67	12.26	8.729
66.0	19.73	17.96	12.99	7.917	11.00	15.77	19.80	17.05	11.37	7.372
69.0	19.23	17.36	12.01	6.570	10.13	15.16	19.32	16.49	10.49	6.014
72.0	18.68	16.77	11.21	5.258	9.336	14.57	18.82	15.92	9.641	4.713
75.0	18.14	16.19	10.39	3.997	8.627	14.01	18.30	15.34	8.883	3.471
78.0	17.57	15.60	9.592	2.781	7.948	13.45	17.77	14.77	8.195	2.320
81.0	17.01	15.02	8.858	1.721	7.360	12.90	17.21	14.20	7.576	1.364
84.0	16.41	14.45	8.235	0.9025	6.862	12.39	16.63	13.64	7.029	0.6003
87.0	15.80	13.88	7.706	0.4530	6.450	11.86	16.05	13.10	6.592	0.3219
90.0	15.23	13.33	7.264	0.4110	6.068	11.37	15.47	12.58	6.225	0.2998
93.0	14.67	12.81	6.912	0.4021	5.805	10.93	14.91	12.06	5.889	0.3043
96.0	14.13	12.32	6.665	0.4072	5.619	10.52	14.37	11.60	5.673	0.3089
99.0	13.59	11.81	6.474	0.4323	5.484	9.621	13.82	10.56	5.528	0.3134
102.0	12.78	10.61	6.338	0.4534	5.373	9.136	13.00	10.07	5.422	0.3366
105.0	12.29	10.36	5.812	0.4698	4.441	8.955	12.52	9.856	4.901	0.3619
108.0	11.84	10.09	5.759	0.4862	4.140	8.764	12.06	9.590	4.587	0.3669
111.0	11.40	9.809	5.825	0.5026	4.055	8.533	11.64	9.339	4.411	0.3719
114.0	10.98	9.538	5.690	0.5278	3.985	7.889	11.23	8.997	4.247	0.3769
117.0	10.60	9.272	5.658	0.5530	3.950	7.507	10.39	8.605	4.196	0.3819
120.0	10.23	9.051	5.600	0.5880	3.925	7.221	10.01	8.228	4.202	0.4322
123.0	9.882	8.830	5.208	0.6233	3.890	6.985	9.653	7.896	4.237	0.4723
126.0	9.540	8.578	4.987	0.6534	3.835	6.368	9.276	7.139	4.221	0.5226
129.0	9.208	8.331	4.560	0.6887	3.564	6.517	8.660	7.323	4.181	0.5627
132.0	8.862	7.723	4.118	0.7188	3.403	6.261	8.318	7.022	4.086	0.5980
135.0	8.510	7.024	3.731	0.7539	3.282	5.989	8.145	6.720	3.940	0.6432
138.0	8.153	6.440	3.403	0.7790	3.107	5.593	7.738	6.419	3.748	0.6785
141.0	7.796	5.633	3.202	0.7991	2.831	5.231	6.947	6.113	3.507	0.7236
144.0	7.434	5.176	3.166	0.8193	2.594	4.833	6.748	5.816	3.286	0.7589
147.0	7.038	4.677	3.161	0.8396	2.468	4.391	6.592	5.534	3.111	0.8090
150.0	6.635	4.170	3.155	0.9047	2.352	3.974	6.095	5.147	3.005	0.8743
153.0	6.174	3.657	3.166	0.9248	2.203	3.517	5.879	4.841	2.748	0.9196
156.0	5.576	3.185	3.316	0.9303	1.972	3.160	5.587	4.363	2.517	0.9748
159.0	4.977	2.788	3.362	0.9309	1.900	2.733	5.179	4.127	2.317	1.020
162.0	4.290	2.482	3.357	0.9316	1.289	2.467	4.647	3.821	2.286	1.085
165.0	3.751	2.277	3.342	0.9322	0.7137	2.407	4.325	3.384	1.510	1.126
168.0	1.932	2.287	3.287	0.9329	0.7072	1.975	2.332	2.896	0.8832	1.161
171.0	1.750	2.206	3.207	0.9335	0.7007	0.6884	1.677	2.479	0.8100	1.196
174.0	1.559	2.090	3.077	0.9341	0.6886	0.6734	1.401	1.947	0.7367	1.251
177.0	1.363	1.923	2.940	0.9348	0.6735	0.6684	1.211	1.018	0.6634	1.316
180.0	0.6885	0.6835	0.6936	0.8795	1.277	0.9097	0.6885	0.6835	0.6634	1.352
G/C	300.0	330.0								
0.0	27.16	27.17								
3.0	27.22	27.35								
6.0	27.23	27.49								
9.0	27.16	27.54								
12.0	26.95	27.53								
15.0	26.66	27.50								
18.0	26.25	27.32								
21.0	25.77	27.09								
24.0	25.21	26.80								
27.0	24.58	26.49								
30.0	23.92	26.13								

C Range: 0 - 360DEG
 C Interval: 30.0DEG
 Test Speed: HIGH
 Temperature: 25.3DEG
 Operators: LPC
 Test Date: 2021-11-29

γ Range: 0 - 180DEG
 γ Interval: 1.0DEG
 Test System: EVERFINE GO-2000B_V1 SYSTEM V2.0.362
 Humidity: 65.0%
 Test Distance: 9.200m [K=1.0000]
 Remarks:

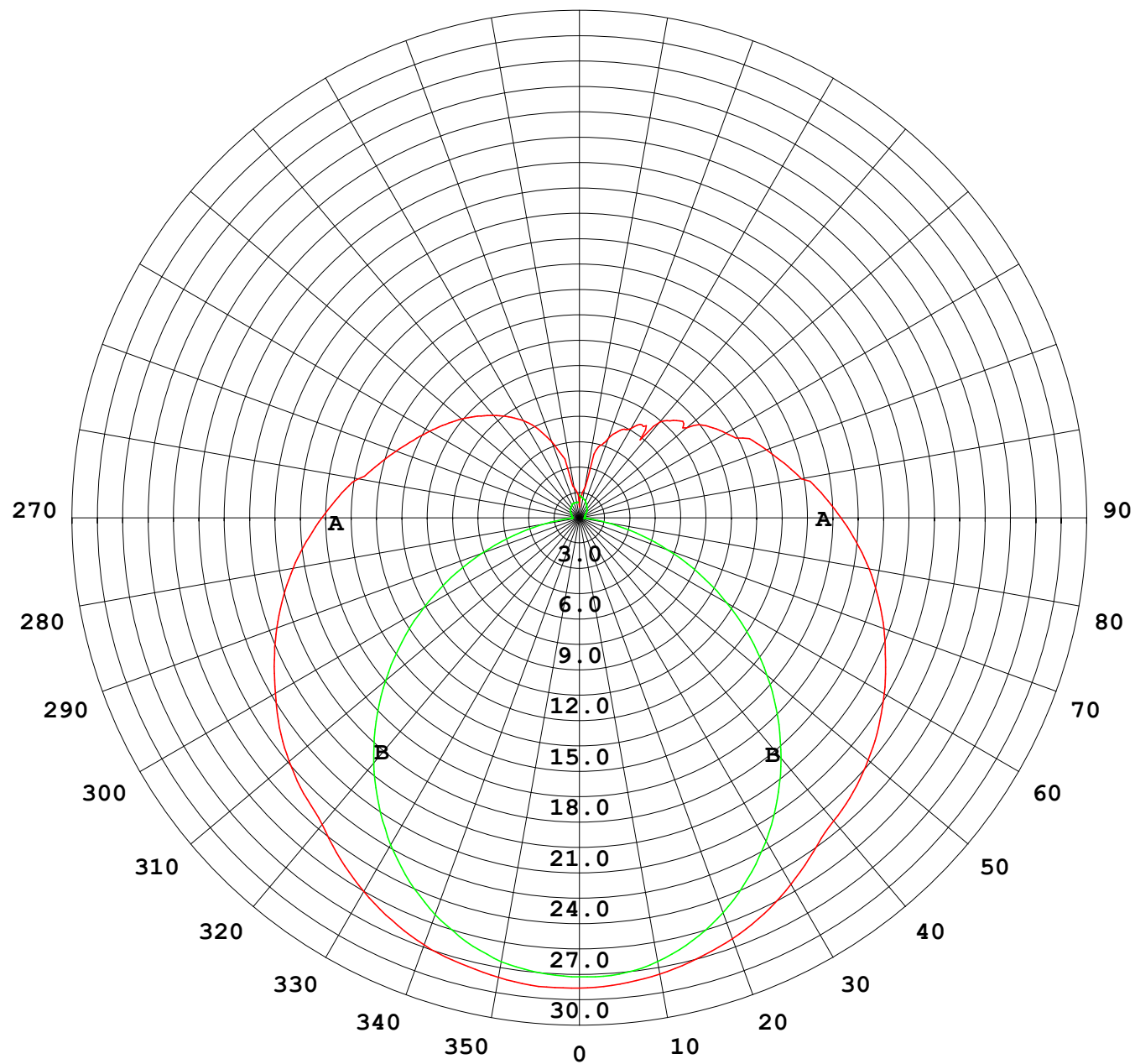
Photometric Data Table [cd]

33.0	23.21	25.79
36.0	22.47	25.37
39.0	21.71	24.84
42.0	20.91	24.29
45.0	20.08	23.68
48.0	19.27	23.03
51.0	18.39	22.35
54.0	17.43	21.65
57.0	16.46	20.91
60.0	15.44	20.38
63.0	14.41	19.89
66.0	13.39	19.35
69.0	12.35	18.77
72.0	11.46	18.18
75.0	10.64	17.56
78.0	9.858	17.00
81.0	9.104	16.45
84.0	8.436	15.90
87.0	7.889	15.34
90.0	7.422	14.80
93.0	7.055	14.27
96.0	6.774	13.76
99.0	6.578	13.01
102.0	6.422	11.91
105.0	5.930	11.67
108.0	5.926	11.34
111.0	5.970	10.99
114.0	5.911	10.68
117.0	5.524	10.36
120.0	5.502	10.06
123.0	5.362	9.776
126.0	5.161	9.524
129.0	5.020	9.228
132.0	4.814	8.636
135.0	4.623	7.963
138.0	4.371	7.149
141.0	4.085	6.473
144.0	3.864	5.907
147.0	3.713	5.459
150.0	3.512	5.112
153.0	3.403	4.751
156.0	3.549	4.358
159.0	3.601	3.946
162.0	3.620	3.534
165.0	3.638	3.222
168.0	3.532	3.231
171.0	3.402	3.246
174.0	3.332	3.213
177.0	3.256	3.156
180.0	1.282	0.9147

C Range: 0 - 360DEG
 C Interval: 30.0DEG
 Test Speed: HIGH
 Temperature: 25.3DEG
 Operators: LPC
 Test Date: 2021-11-29

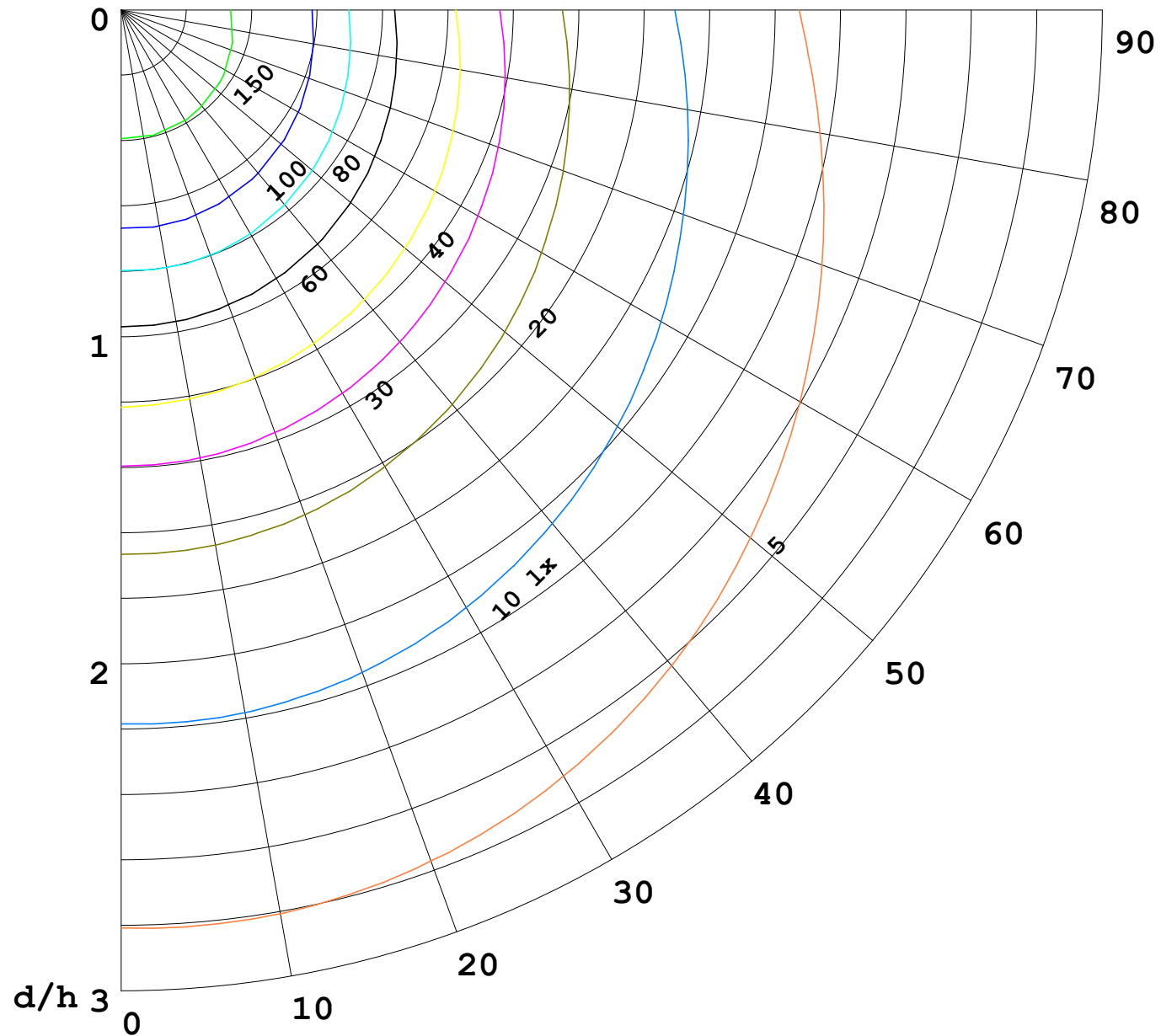
γ Range: 0 - 180DEG
 γ Interval: 1.0DEG
 Test System: EVERFINE GO-2000B_V1 SYSTEM V2.0.362
 Humidity: 65.0%
 Test Distance: 9.200m [K=1.0000]
 Remarks:

I (cd)



1000 lm

$\kappa = 1$



F = 5000 lm
 K = 0.7
 Hcc = 0.0 m
 Hfc = 0.0 m
 Eave = 100 lx

	Pcc	Pw	Pfc
—	70	50	30
—	50	30	20

