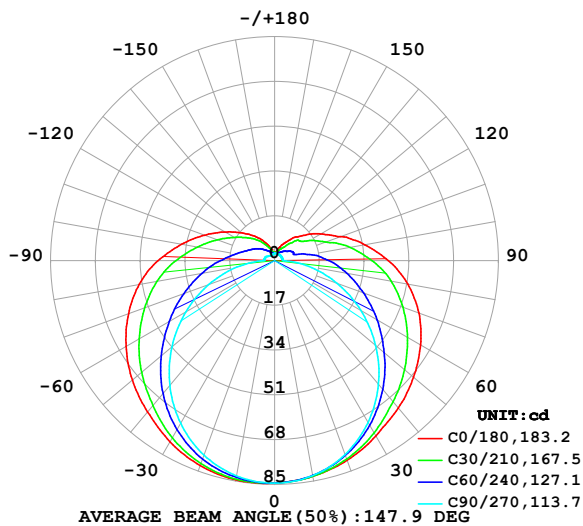


## LUMINAIRE PHOTOMETRIC TEST REPORT

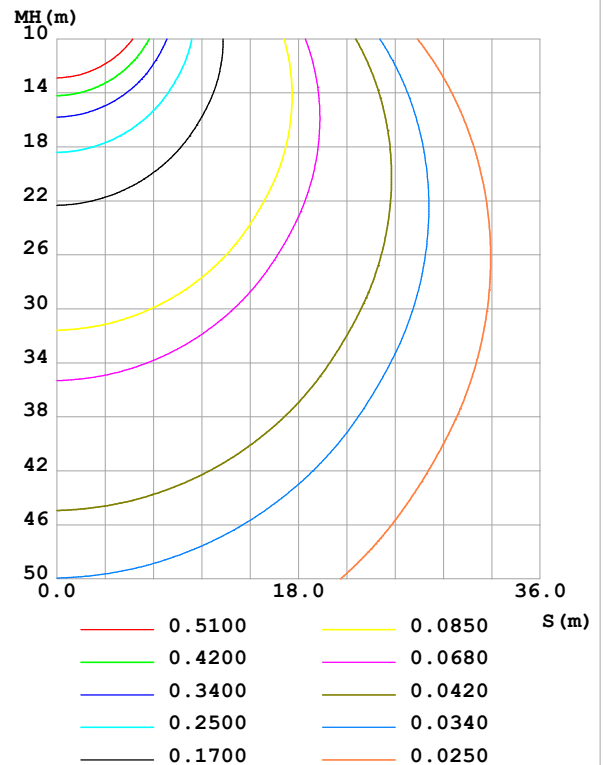
Test:U:24.00V I:0.4931A P:11.83W PF:1.000 Freq:0Hz Lamp Flux:418.885x1 lm		
NAME: SF21-24V-5050-60-4500K	TYPE:	WEIGHT:
SPEC.:	DIM.: Length=1m	SERIAL No.:
MFR.: OLympia lighting	SUR.:	Shielding Angle:

DATA OF LAMP		PHOTOMETRIC DATA Eff: 35.40 lm/W			
MODEL	5050	Imax (cd)	84.67	S/MH(C0/180)	1.41
NOMINAL POWER(W)	12	LOR(%)	100.0	S/MH(C90/270)	1.26
RATED VOLTAGE(V)	24	TOTAL FLUX(lm)	418.90	$\eta$ UP,DN(C0-180)	9.8,39.9
NOMINAL FLUX(lm)	418.885	CIE CLASS	SEMI-D.	$\eta$ UP,DN(C180-360)	10.2,40.1
LAMPS INSIDE	1	$\eta$ up (%)	20.0	CIBSE SHR NOM	1.50
TEST VOLTAGE(V)		$\eta$ down (%)	80.0	CIBSE SHR MAX	1.55

LUMINOUS INTENSITY DISTRIBUTION DIAGRAM



C0 PLANE ISOLUX DIAGRAM (UNIT:lx)



C Range: 0 - 360DEG  
C Interval: 30.0DEG  
Test Speed: HIGH  
Temperature:25.3℃  
Operators:  
Test Date:2025-03-07

$\gamma$  Range: 0 - 180DEG  
 $\gamma$  Interval: 1.0DEG  
Test System:EVERFINE GO-2000B\_V1 SYSTEM V2.00.488  
Humidity:65.0%  
Test Distance:6.360m [K=1.0000]  
Remarks:

## ZONAL FLUX DIAGRAM

## ZONAL FLUX DIAGRAM:

$\gamma$	C0	C45	C90	C135	C180	C225	C270	C315	$\gamma$	$\Phi$ zone	$\Phi$ total	%lum, lamp
10	83.17	83.00	82.93	83.89	84.52	83.92	83.00	83.07	0- 10	8.015	8.015	1.91,1.91
20	80.62	79.40	78.31	80.98	82.78	81.05	78.56	79.54	10- 20	23.20	31.21	7.45,7.45
30	76.87	73.88	70.96	75.87	79.44	75.89	71.36	74.03	20- 30	35.87	67.08	16,16
40	73.11	66.91	61.34	68.94	75.02	68.90	61.88	67.06	30- 40	44.80	111.9	26.7,26.7
50	68.89	59.37	50.03	61.30	70.54	61.09	50.87	59.56	40- 50	49.60	161.5	38.5,38.6
60	63.97	51.62	37.78	53.11	65.12	52.81	38.89	51.77	50- 60	50.31	211.8	50.6,50.6
70	58.30	43.88	25.23	44.94	59.04	44.59	26.54	44.00	60- 70	47.46	259.3	61.9,61.9
80	51.30	36.39	13.27	37.07	52.18	36.68	14.56	36.56	70- 80	41.77	301.0	71.9,71.9
90	43.22	28.84	3.475	29.40	44.23	29.05	4.132	29.32	80- 90	34.18	335.2	80,80
100	34.89	21.35	3.000	22.68	35.91	22.38	4.041	22.24	90-100	26.49	361.7	86.3,86.3
110	26.69	14.15	2.891	17.48	28.38	17.23	3.899	16.27	100-110	19.63	381.3	91,91
120	20.32	11.33	2.880	13.53	21.81	13.34	3.322	12.33	110-120	14.09	395.4	94.4,94.4
130	15.11	8.795	2.873	10.37	16.47	10.30	2.761	9.323	120-130	9.823	405.2	96.7,96.7
140	11.48	6.495	2.861	7.751	12.27	7.757	2.402	6.306	130-140	6.485	411.7	98.3,98.3
150	7.830	4.456	2.859	5.650	8.690	5.618	2.361	4.484	140-150	3.855	415.6	99.2,99.2
160	5.339	3.422	2.859	4.047	5.522	4.053	2.549	3.363	150-160	2.079	417.7	99.7,99.7
170	3.051	3.001	2.859	3.104	3.044	3.138	2.691	2.800	160-170	0.9593	418.6	99.9,99.9
180	3.053	3.001	2.859	2.845	3.058	3.006	2.835	2.833	170-180	0.2812	418.9	100,100
DEG	LUMINOUS INTENSITY:cd									UNIT:lm		

Conical surface Flux(90deg): 136.34 lm

%lum = 32.5%

%lamp = 32.5%

Conical surface Flux(130deg): 236.08 lm

%lum = 56.4%

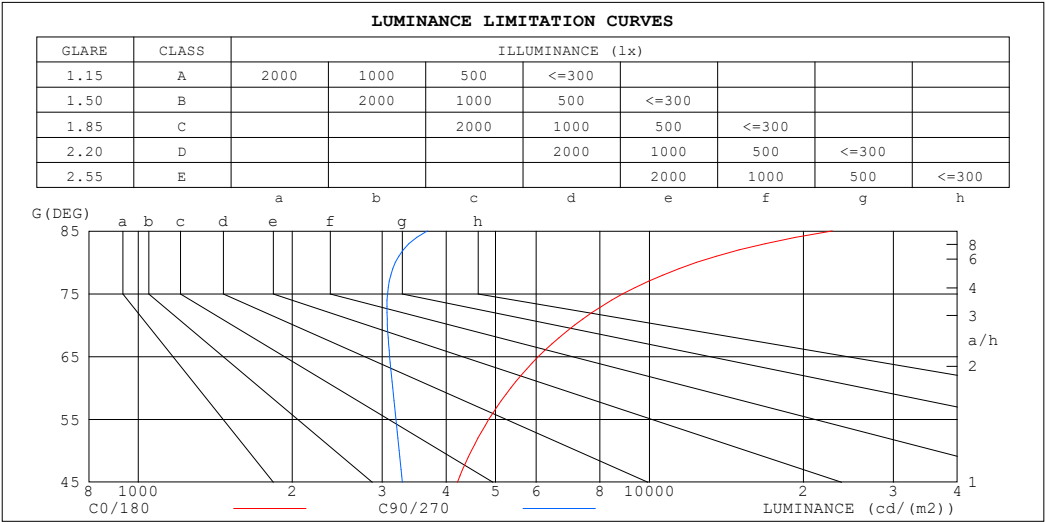
%lamp = 56.4%

C Range: 0 - 360DEG  
 C Interval: 30.0DEG  
 Test Speed: HIGH  
 Temperature:25.3℃  
 Operators:  
 Test Date:2025-03-07

$\gamma$  Range: 0 - 180DEG  
 $\gamma$  Interval: 1.0DEG  
 Test System:EVERFINE GO-2000B\_V1 SYSTEM V2.00.488  
 Humidity:65.0%  
 Test Distance:6.360m [K=1.0000]  
 Remarks:

LUMINANCE LIMITATION CURVES

Test:U:24.00V I:0.4931A P:11.83W PF:1.000 Freq:0Hz Lamp Flux:418.885x1 lm		
NAME: SF21-24V-5050-60-4500K	TYPE:	WEIGHT:
SPEC.:	DIM.: Length=1m	SERIAL No.:
MFR.: OLympia lighting	SUR.:	Shielding Angle:



LUMINANCE cd/(m2)		
G (DEG)	C0/180	C90/270
85	22762	3676
80	12361	3181
75	8877	3074
70	7132	3070
65	6065	3101
60	5353	3144
55	4851	3190
50	4484	3239
45	4206	3287

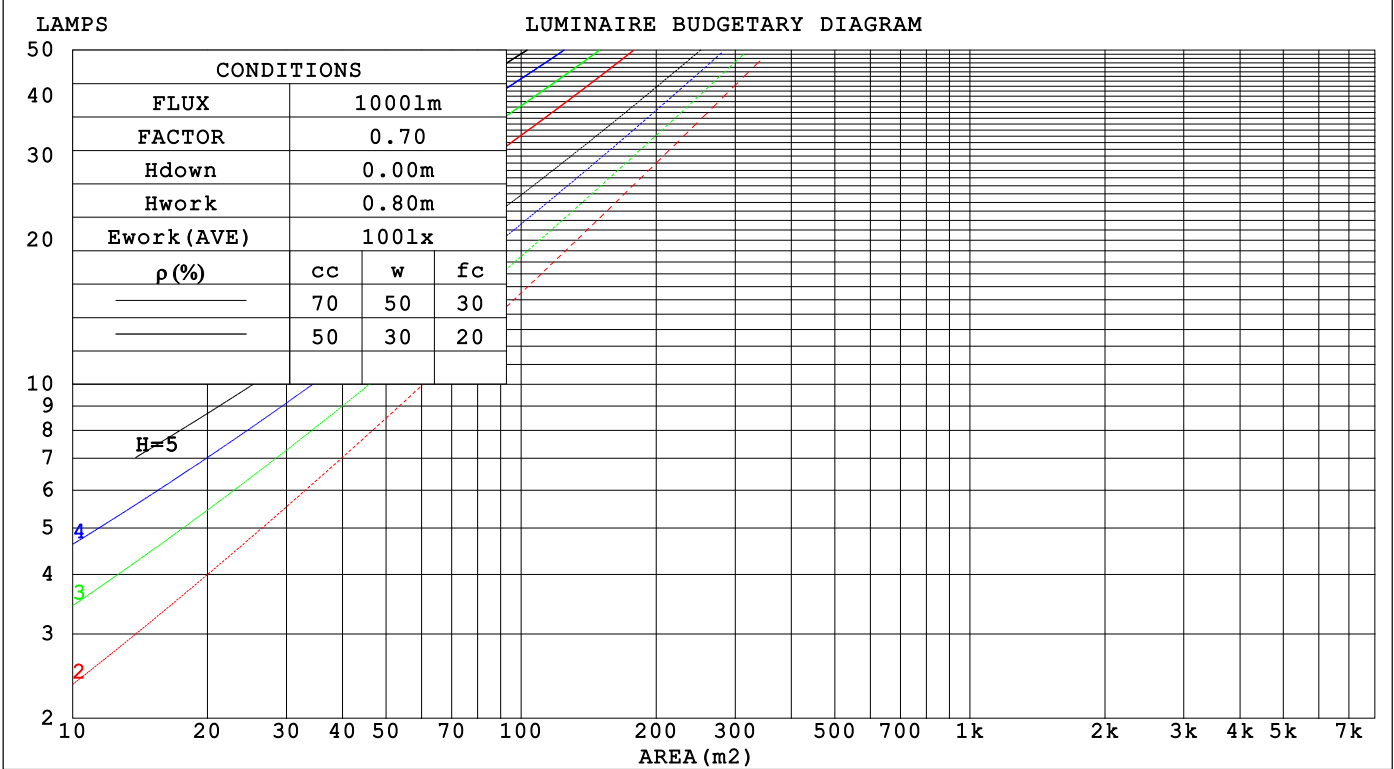
C Range: 0 - 360DEG  
C Interval: 30.0DEG  
Test Speed: HIGH  
Temperature:25.3℃  
Operators:  
Test Date:2025-03-07

γ Range: 0 - 180DEG  
γ Interval: 1.0DEG  
Test System:EVERFINE GO-2000B\_V1 SYSTEM V2.00.488  
Humidity:65.0%  
Test Distance:6.360m [K=1.0000]  
Remarks:

CU AND LUMINAIRE BUDGETARY ESTIMATE DIAGRAM

Test:U:24.00V I:0.4931A P:11.83W PF:1.000 Freq:0Hz		
Lamp Flux:418.885x1 lm		
NAME: SF21-24V-5050-60-4500K	TYPE:	WEIGHT:
SPEC.:	DIM.: Length=1m	SERIAL No.:
MFR.: OLYMPIA lighting	SUR.:	Shielding Angle:

pcc	80%			70%			50%			30%			10%			0
pw	50%	30%	10%	50%	30%	10%	50%	30%	10%	50%	30%	10%	50%	30%	10%	0
pfc	20%			20%			20%			20%			20%			0
RCR	RCR:Room Cavity Ratio															



C Range: 0 - 360DEG  
C Interval: 30.0DEG  
Test Speed: HIGH  
Temperature:25.3℃  
Operators:  
Test Date:2025-03-07

γ Range: 0 - 180DEG  
γ Interval: 1.0DEG  
Test System:EVERFINE GO-2000B\_V1 SYSTEM V2.00.488  
Humidity:65.0%  
Test Distance:6.360m [K=1.0000]  
Remarks:

## WEC AND CCEC

Test:U:24.00V I:0.4931A P:11.83W PF:1.000 Freq:0Hz Lamp Flux:418.885x1 lm		
NAME: SF21-24V-5050-60-4500K	TYPE:	WEIGHT:
SPEC.:	DIM.: Length=1m	SERIAL No.:
MFR.: OLympia lighting	SUR.:	Shielding Angle:

pcc	80%			70%			50%			30%			10%			0														
pw	50%	30%	10%	50%	30%	10%	50%	30%	10%	50%	30%	10%	50%	30%	10%	0														
pfc	20%			20%			20%			20%			20%			0														
RCR	RCR:Room Cavity Ratio															Wall Exitance Coefficients(WEC)														
0.0																														
1.0	.395	.225	.071	.382	.218	.069	.357	.205	.065	.334	.193	.062	.313	.181	.058															
2.0	.339	.186	.057	.327	.180	.056	.305	.169	.053	.284	.159	.050	.264	.150	.047															
3.0	.300	.160	.048	.289	.155	.047	.269	.146	.044	.250	.137	.042	.232	.128	.040															
4.0	.269	.140	.041	.259	.136	.040	.241	.128	.038	.223	.120	.036	.207	.113	.034															
5.0	.244	.124	.036	.235	.121	.035	.218	.114	.033	.203	.107	.032	.188	.100	.030															
6.0	.223	.112	.032	.215	.109	.031	.200	.102	.030	.185	.096	.028	.172	.090	.027															
7.0	.206	.102	.029	.198	.099	.028	.184	.093	.027	.171	.088	.025	.158	.082	.024															
8.0	.191	.093	.026	.184	.090	.026	.171	.085	.024	.159	.080	.023	.147	.076	.022															
9.0	.177	.086	.024	.171	.083	.023	.159	.079	.022	.148	.074	.021	.137	.070	.020															
10.0	.166	.080	.022	.160	.077	.022	.149	.073	.021	.139	.069	.020	.129	.065	.019															

pcc	80%			70%			50%			30%			10%			0
pw	50%	30%	10%	50%	30%	10%	50%	30%	10%	50%	30%	10%	50%	30%	10%	0
pfc	20%			20%			20%			20%			20%			0
RCR	RCR:Room Cavity Ratio						Ceiling Cavity Exitance Coefficients (CCEC)									
0.0	.343	.343	.343	.293	.293	.293	.200	.200	.200	.115	.115	.115	.037	.037	.037	
1.0	.340	.309	.281	.291	.265	.242	.199	.182	.167	.114	.106	.097	.037	.034	.031	
2.0	.333	.286	.247	.285	.246	.213	.196	.170	.149	.113	.099	.087	.036	.032	.028	
3.0	.326	.270	.225	.279	.233	.195	.192	.162	.137	.111	.094	.081	.036	.031	.026	
4.0	.318	.257	.211	.273	.222	.184	.188	.155	.129	.108	.091	.076	.035	.030	.025	
5.0	.310	.248	.202	.266	.214	.175	.183	.150	.124	.106	.088	.074	.034	.029	.024	
6.0	.303	.240	.195	.260	.208	.170	.179	.145	.120	.104	.086	.071	.034	.028	.024	
7.0	.295	.233	.190	.254	.202	.165	.176	.142	.117	.102	.084	.070	.033	.027	.023	
8.0	.289	.228	.186	.249	.198	.162	.172	.139	.115	.100	.082	.068	.032	.027	.023	
9.0	.282	.223	.183	.243	.194	.159	.169	.136	.113	.098	.080	.068	.032	.026	.022	
10.0	.277	.219	.180	.238	.190	.157	.165	.134	.112	.096	.079	.067	.031	.026	.022	

C Range: 0 - 360DEG  
C Interval: 30.0DEG  
Test Speed: HIGH  
Temperature:25.3℃  
Operators:  
Test Date:2025-03-07

γ Range: 0 - 180DEG  
γ Interval: 1.0DEG  
Test System:EVERFINE GO-2000B\_V1 SYSTEM V2.00.488  
Humidity:65.0%  
Test Distance:6.360m [K=1.0000]  
Remarks:

## UGR(Unified Glare Rating) Table

Test:U:24.00V I:0.4931A P:11.83W PF:1.000 Freq:0Hz Lamp Flux:418.885x1 lm										
NAME: SF21-24V-5050-60-4500K					TYPE:			WEIGHT:		
SPEC.:					DIM.: Length=1m			SERIAL No.:		
MFR.: OLympia lighting					SUR.:			Shielding Angle:		
ceiling/cavity	0.7	0.7	0.5	0.5	0.3	0.7	0.7	0.5	0.5	0.3
walls	0.5	0.3	0.5	0.3	0.3	0.5	0.3	0.5	0.3	0.3
working plane	0.2	0.2	0.2	0.2	0.2	0.2	0.2	0.2	0.2	0.2
Room dimensions	Viewed crosswise					Viewed endwise				
x = 2H y = 2H	22.9	24.3	23.4	24.8	25.4	20.7	22.1	21.3	22.6	23.2
3H	25.7	27.0	26.3	27.6	28.2	22.5	23.7	23.0	24.3	25.0
4H	27.3	28.5	27.9	29.1	29.8	23.3	24.5	23.9	25.1	25.7
6H	29.1	30.2	29.7	30.8	31.5	24.0	25.1	24.6	25.7	26.4
8H	30.0	31.1	30.6	31.7	32.4	24.3	25.4	24.9	26.0	26.7
12H	31.1	32.2	31.7	32.8	33.5	24.5	25.6	25.1	26.2	26.9
4H 2H	23.5	24.7	24.1	25.3	25.9	21.9	23.1	22.5	23.7	24.4
3H	26.6	27.6	27.2	28.2	29.0	23.9	24.9	24.5	25.6	26.3
4H	28.3	29.3	29.0	30.0	30.7	24.9	25.9	25.5	26.5	27.2
6H	30.3	31.2	31.0	31.8	32.6	25.8	26.7	26.5	27.3	28.1
8H	31.4	32.2	32.1	32.9	33.7	26.2	27.0	26.9	27.7	28.5
12H	32.6	33.4	33.3	34.1	34.9	26.5	27.3	27.2	28.0	28.8
8H 4H	28.7	29.5	29.4	30.2	31.0	26.0	26.8	26.7	27.5	28.3
6H	31.0	31.7	31.7	32.4	33.2	27.3	27.9	28.0	28.7	29.5
8H	32.3	32.9	33.0	33.6	34.5	27.9	28.5	28.6	29.2	30.1
12H	33.8	34.3	34.5	35.0	35.9	28.4	29.0	29.2	29.7	30.6
12H 4H	28.7	29.5	29.4	30.2	31.0	26.4	27.1	27.1	27.8	28.6
6H	31.1	31.7	31.8	32.4	33.3	27.8	28.5	28.6	29.2	30.1
8H	32.5	33.1	33.3	33.8	34.7	28.6	29.2	29.4	29.9	30.8
Variations with the observer position at spacings(CIE Pub.117):										
S = 1.0H	+ 0.1 / - 0.1					+ 0.1 / - 0.1				
1.5H	+ 0.2 / - 0.3					+ 0.2 / - 0.3				
2.0H	+ 0.2 / - 0.3					+ 0.2 / - 0.4				

CIE Pub.117, 418.9 lm Total Lamp Luminous Flux Correct (8log(F/F0) = -3.0)  
Area: 0.024 m2

C Range: 0 - 360DEG  
C Interval: 30.0DEG  
Test Speed: HIGH  
Temperature:25.3℃  
Operators:  
Test Date:2025-03-07

γ Range: 0 - 180DEG  
γ Interval: 1.0DEG  
Test System:EVERFINE GO-2000B\_V1 SYSTEM V2.00.488  
Humidity:65.0%  
Test Distance:6.360m [K=1.0000]  
Remarks:

## UTILIZATION FACTORS TABLE

Test:U:24.00V I:0.4931A P:11.83W PF:1.000 Freq:0Hz Lamp Flux:418.885x1 lm		
NAME: SF21-24V-5050-60-4500K	TYPE:	WEIGHT:
SPEC.:	DIM.: Length=1m	SERIAL No.:
MFR.: OLympia lighting	SUR.:	Shielding Angle:

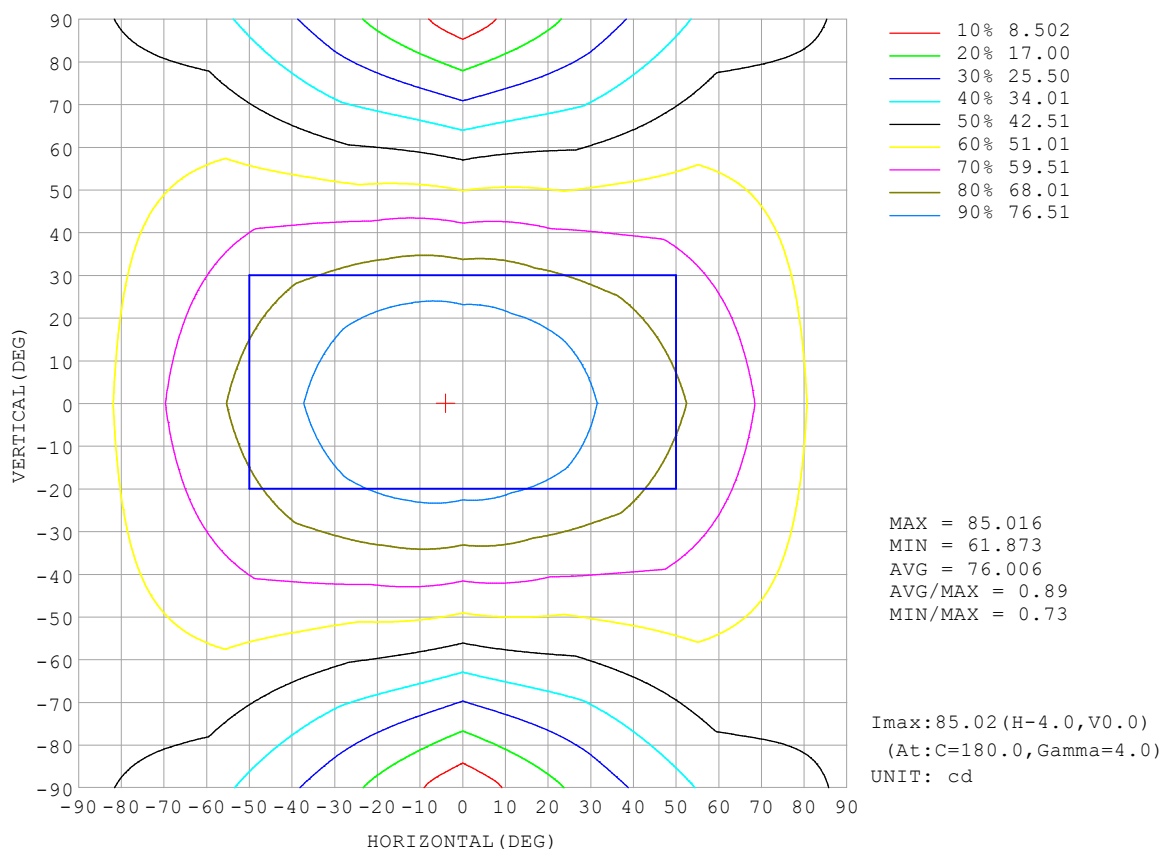
REFLECTANCE										
Ceiling	0.8	0.8	0.8	0.7	0.7	0.7	0.5	0.5	0.5	0
Walls	0.7	0.5	0.3	0.7	0.5	0.3	0.7	0.5	0.3	0
Working plane	0.2	0.2	0.2	0.2	0.2	0.2	0.2	0.2	0.2	0
ROOM INDEX	UTILIZATION FACTORS (PERCENT) $k(RI) \times RCR = 5$									
$k = 0.60$	47	34	27	45	34	27	43	33	26	19
0.80	56	42	34	54	42	34	51	40	33	25
1.00	63	50	42	61	49	41	58	49	40	31
1.25	70	57	49	68	56	48	63	53	46	36
1.50	75	63	54	72	61	53	67	58	51	40
2.00	83	71	63	79	69	61	73	65	58	46
2.50	87	77	68	84	74	67	77	69	63	50
3.00	91	81	74	87	79	72	80	73	67	53
4.00	96	88	81	92	84	78	84	78	73	58
5.00	99	92	86	95	88	83	87	82	77	61
ROOM INDEX	UF (total)									Direct
According to DIN EN 13032-2 2004			Suspended					SHRNOM = 1.25		

C Range: 0 - 360DEG  
 C Interval: 30.0DEG  
 Test Speed: HIGH  
 Temperature: 25.3 °C  
 Operators:  
 Test Date: 2025-03-07

γ Range: 0 - 180DEG  
 γ Interval: 1.0DEG  
 Test System: EVERFINE GO-2000B\_V1 SYSTEM V2.00.488  
 Humidity: 65.0%  
 Test Distance: 6.360m [K=1.0000]  
 Remarks:

## ISOCANDELA DIAGRAM

Test:U:24.00V I:0.4931A P:11.83W PF:1.000 Freq:0Hz Lamp Flux:418.885x1 lm		
NAME: SF21-24V-5050-60-4500K	TYPE:	WEIGHT:
SPEC.:	DIM.: Length=1m	SERIAL No.:
MFR.: OLympia lighting	SUR.:	Shielding Angle:



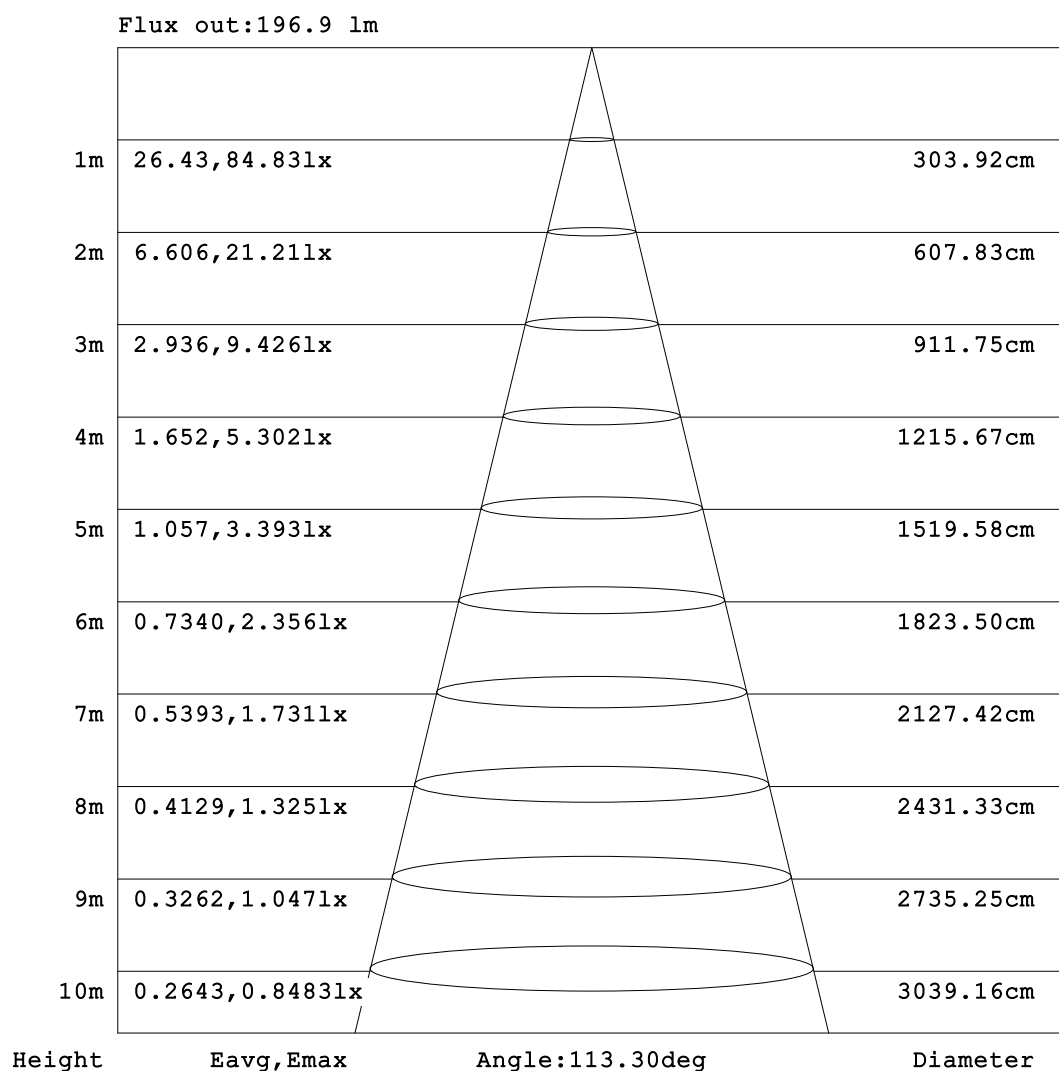
C Range: 0 - 360DEG  
C Interval: 30.0DEG  
Test Speed: HIGH  
Temperature:25.3℃  
Operators:  
Test Date:2025-03-07

γ Range: 0 - 180DEG  
γ Interval: 1.0DEG  
Test System:EVERFINE GO-2000B\_V1 SYSTEM V2.00.488  
Humidity:65.0%  
Test Distance:6.360m [K=1.0000]  
Remarks:



## AAI Figure

Test:U:24.00V I:0.4931A P:11.83W PF:1.000 Freq:0Hz Lamp Flux:418.885x1 lm		
NAME: SF21-24V-5050-60-4500K	TYPE:	WEIGHT:
SPEC.:	DIM.: Length=1m	SERIAL No.:
MFR.: OLympia lighting	SUR.:	Shielding Angle:



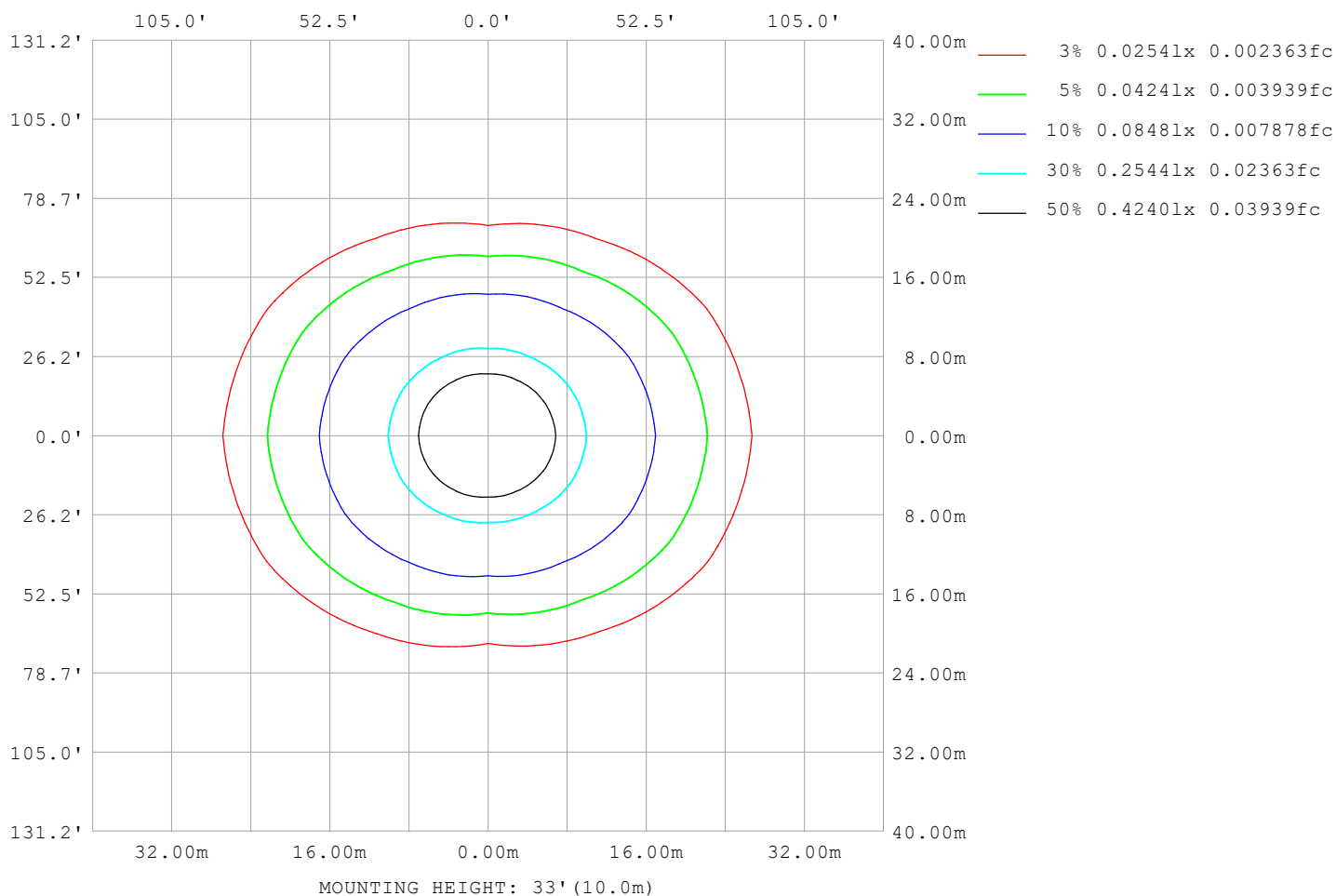
Note:The Curves indicate the illuminated area and the average illumination when the luminaire is at different distance.

C Range: 0 - 360DEG  
C Interval: 30.0DEG  
Test Speed: HIGH  
Temperature:25.3℃  
Operators:  
Test Date:2025-03-07

γ Range: 0 - 180DEG  
γ Interval: 1.0DEG  
Test System:EVERFINE GO-2000B\_V1 SYSTEM V2.00.488  
Humidity:65.0%  
Test Distance:6.360m [K=1.0000]  
Remarks:

## ISOLUX DIAGRAM

Test:U:24.00V I:0.4931A P:11.83W PF:1.000 Freq:0Hz Lamp Flux:418.885x1 lm		
NAME: SF21-24V-5050-60-4500K	TYPE:	WEIGHT:
SPEC.:	DIM.: Length=1m	SERIAL No.:
MFR.: OLympia lighting	SUR.:	Shielding Angle:



C Range: 0 - 360DEG  
C Interval: 30.0DEG  
Test Speed: HIGH  
Temperature: 25.3°C  
Operators:  
Test Date: 2025-03-07

γ Range: 0 - 180DEG  
γ Interval: 1.0DEG  
Test System: EVERFINE GO-2000B\_V1 SYSTEM V2.00.488  
Humidity: 65.0%  
Test Distance: 6.360m [K=1.0000]  
Remarks:

## LED Avg.L Report

Test:U:24.00V I:0.4931A P:11.83W PF:1.000 Freq:0Hz Lamp Flux:418.885x1 lm		
NAME: SF21-24V-5050-60-4500K	TYPE:	WEIGHT:
SPEC.:	DIM.: Length=1m	SERIAL No.:
MFR.: OLympia lighting	SUR.:	Shielding Angle:

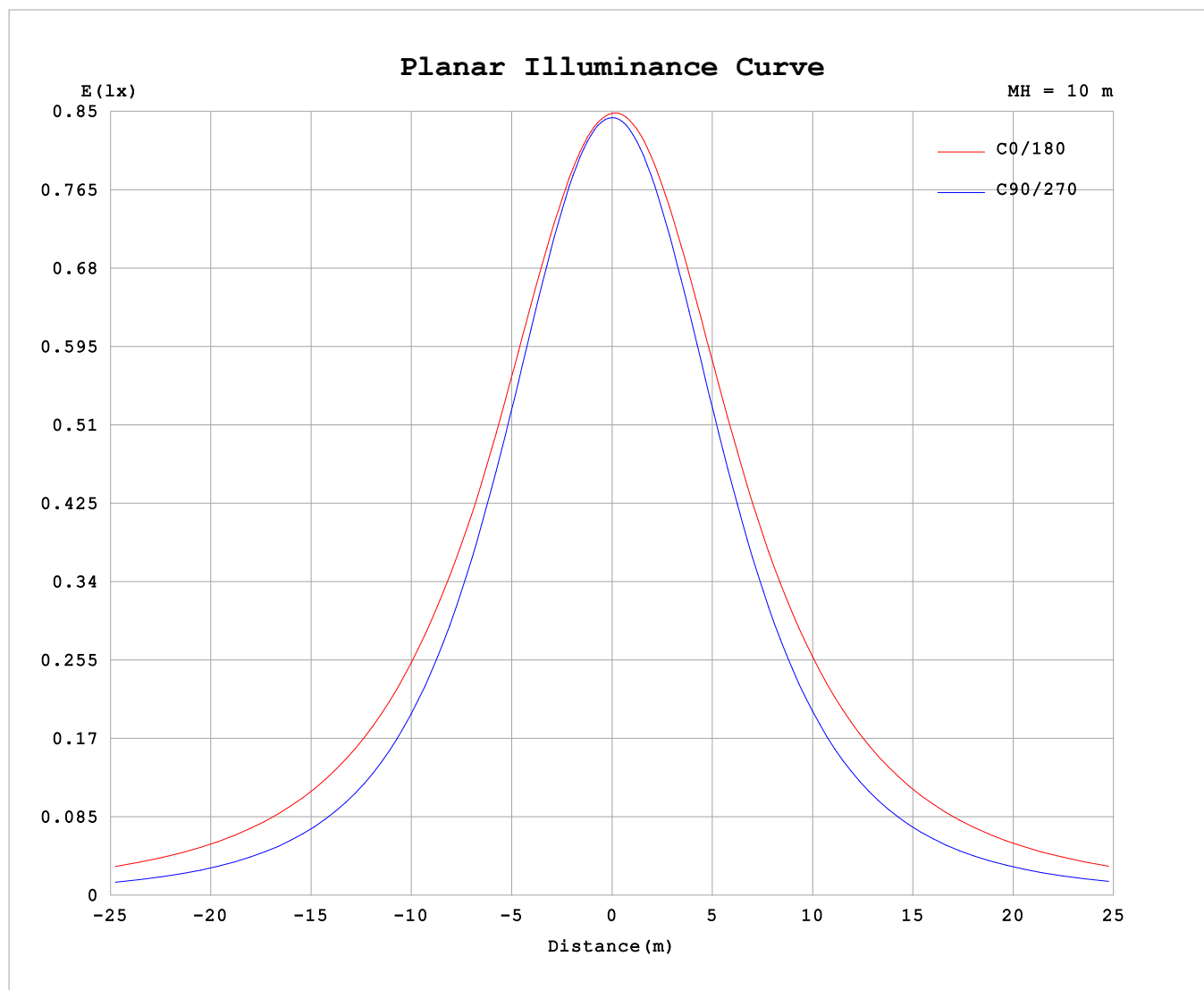
AvgL	cd/m2
L_0~180 (65) av	6085
L_0~180 (75) av	8906
L_0~180 (85) av	22902
L_90~270 (65) av	3165
L_90~270 (75) av	3188
L_90~270 (85) av	3939
L_45 (65) av	4783
L_45 (75) av	6572
L_45 (85) av	16033

Standard: GB/T 29293-2012

C Range: 0 - 360DEG  
C Interval: 30.0DEG  
Test Speed: HIGH  
Temperature:25.3℃  
Operators:  
Test Date:2025-03-07

γ Range: 0 - 180DEG  
γ Interval: 1.0DEG  
Test System:EVERFINE GO-2000B\_V1 SYSTEM V2.00.488  
Humidity:65.0%  
Test Distance:6.360m [K=1.0000]  
Remarks:

## Planar Illuminance Curve



C Range: 0 - 360DEG  
C Interval: 30.0DEG  
Test Speed: HIGH  
Temperature: 25.3 °C  
Operators:  
Test Date: 2025-03-07

$\gamma$  Range: 0 - 180DEG  
 $\gamma$  Interval: 1.0DEG  
Test System: EVERFINE GO-2000B\_V1 SYSTEM V2.00.488  
Humidity: 65.0%  
Test Distance: 6.360m [K=1.0000]  
Remarks:

## LUMINOUS DISTRIBUTION INTENSITY DATA

Test:U:24.00V I:0.4931A P:11.83W PF:1.000 Freq:0Hz Lamp Flux:418.885x1 lm																	
NAME: SF21-24V-5050-60-4500K									TYPE:						WEIGHT:		
SPEC.:									DIM.: Length=1m						SERIAL No.:		
MFR.: OLympia lighting									SUR.:						Shielding Angle:		

Table--1

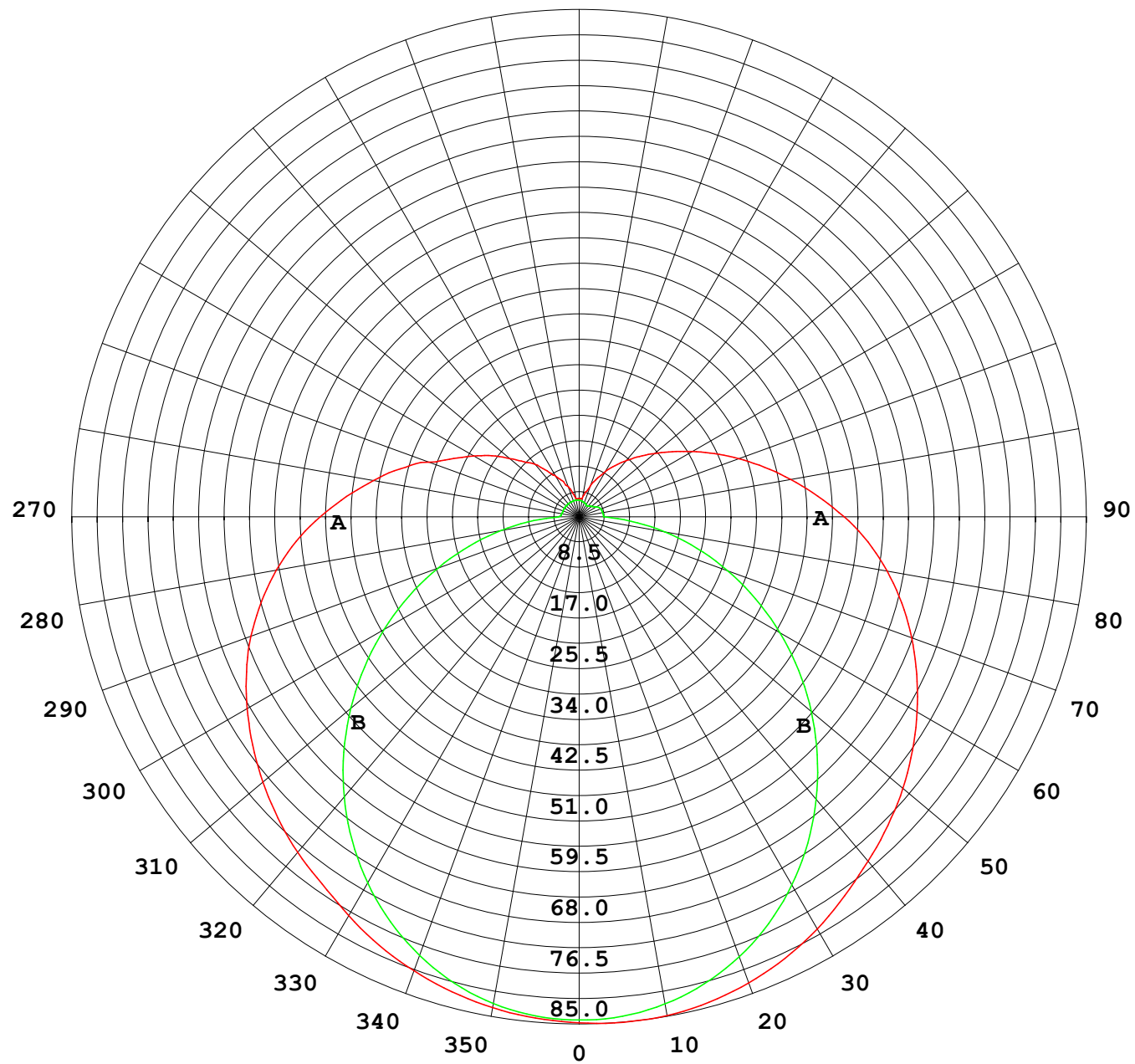
UNIT: cd

C (DEG) γ (DEG)	0	30	60	90	120	150	180	210	240	270	300	330						
0	84.4	84.4	84.4	84.4	84.4	84.4	84.4	84.4	84.4	84.4	84.4	84.4						
5	84.0	84.0	84.0	84.1	84.3	84.5	84.7	84.6	84.3	84.1	84.0	84.0						
10	83.2	83.2	82.8	82.9	83.5	84.2	84.5	84.3	83.6	83.0	83.0	83.2						
15	82.1	81.9	81.1	81.0	82.1	83.4	83.9	83.4	82.2	81.1	81.3	81.9						
20	80.6	80.1	78.7	78.3	80.0	82.0	82.8	82.0	80.1	78.6	78.9	80.2						
25	78.9	78.0	75.7	75.0	77.2	80.1	81.3	80.0	77.4	75.3	76.0	78.0						
30	76.9	75.5	72.2	71.0	73.9	77.8	79.4	77.7	74.1	71.4	72.5	75.5						
35	74.8	72.7	68.2	66.4	70.1	75.1	77.2	74.9	70.2	66.9	68.6	72.7						
40	73.1	69.9	63.9	61.3	65.8	72.1	75.0	71.9	65.9	61.9	64.3	69.9						
45	71.1	67.3	59.2	55.9	61.2	69.2	72.9	68.9	61.2	56.5	59.6	67.2						
50	68.9	64.4	54.3	50.0	56.3	66.3	70.5	65.9	56.2	50.9	54.7	64.4						
55	66.5	61.4	49.6	44.0	51.3	63.1	67.9	62.7	51.1	45.0	49.9	61.4						
60	64.0	58.3	45.0	37.8	46.4	59.8	65.1	59.4	46.2	38.9	45.3	58.3						
65	61.3	55.1	40.4	31.5	41.7	56.4	62.2	56.0	41.4	32.7	40.6	55.2						
70	58.3	51.8	35.9	25.2	37.0	52.8	59.0	52.5	36.7	26.5	36.0	52.0						
75	54.9	48.4	31.7	19.1	32.6	49.3	55.7	48.9	32.2	20.5	31.8	48.7						
80	51.3	44.9	27.8	13.3	28.5	45.6	52.2	45.3	28.1	14.6	27.9	45.2						
85	47.4	41.2	24.2	7.70	24.7	41.8	48.4	41.5	24.2	8.78	24.3	41.6						
90	43.2	37.0	20.7	3.48	21.0	37.8	44.2	37.5	20.6	4.13	20.9	37.8						
95	39.0	32.9	17.3	3.06	17.9	33.7	40.0	33.5	17.5	4.10	17.9	33.9						
100	34.9	29.2	13.5	3.00	15.4	30.0	35.9	29.8	14.9	4.04	14.2	30.2						
105	30.9	25.1	9.61	2.92	13.3	26.5	32.0	26.4	12.9	3.97	11.6	26.2						
110	26.7	20.7	7.60	2.89	11.6	23.3	28.4	23.2	11.2	3.90	10.1	22.4						
115	23.1	17.9	7.77	2.88	10.3	20.4	25.0	20.3	10.0	3.73	8.29	19.4						
120	20.3	15.5	7.19	2.88	9.24	17.8	21.8	17.7	8.95	3.32	7.86	16.8						
125	17.8	12.8	6.24	2.88	8.21	15.6	19.0	15.5	7.98	3.00	6.64	14.7						
130	15.1	12.0	5.59	2.87	7.17	13.6	16.5	13.6	7.05	2.76	5.79	12.9						
135	13.0	10.2	5.13	2.87	6.19	11.8	14.3	11.9	6.07	2.57	5.21	11.0						
140	11.5	8.42	4.57	2.86	5.37	10.1	12.3	10.2	5.27	2.40	4.42	8.19						
145	9.42	6.27	4.03	2.86	4.79	8.57	10.4	8.69	4.62	2.29	3.88	6.88						
150	7.83	5.33	3.58	2.86	4.33	6.97	8.69	7.06	4.17	2.36	3.39	5.58						
155	6.68	4.59	3.16	2.86	3.61	5.71	7.01	5.78	3.54	2.49	3.10	4.53						
160	5.34	3.81	3.04	2.86	3.33	4.76	5.52	4.83	3.28	2.55	2.90	3.82						
165	4.03	3.16	2.99	2.86	3.12	3.73	4.31	3.74	3.07	2.62	2.69	3.03						
170	3.05	3.04	2.96	2.86	2.95	3.26	3.04	3.29	2.98	2.69	2.73	2.87						
175	3.04	3.04	2.96	2.86	2.90	2.95	3.06	3.11	2.97	2.76	2.78	2.79						
180	3.05	3.04	2.97	2.86	2.86	2.83	3.06	3.03	2.98	2.84	2.85	2.82						

C Range: 0 - 360DEG  
C Interval: 30.0DEG  
Test Speed: HIGH  
Temperature:25.3℃  
Operators:  
Test Date:2025-03-07

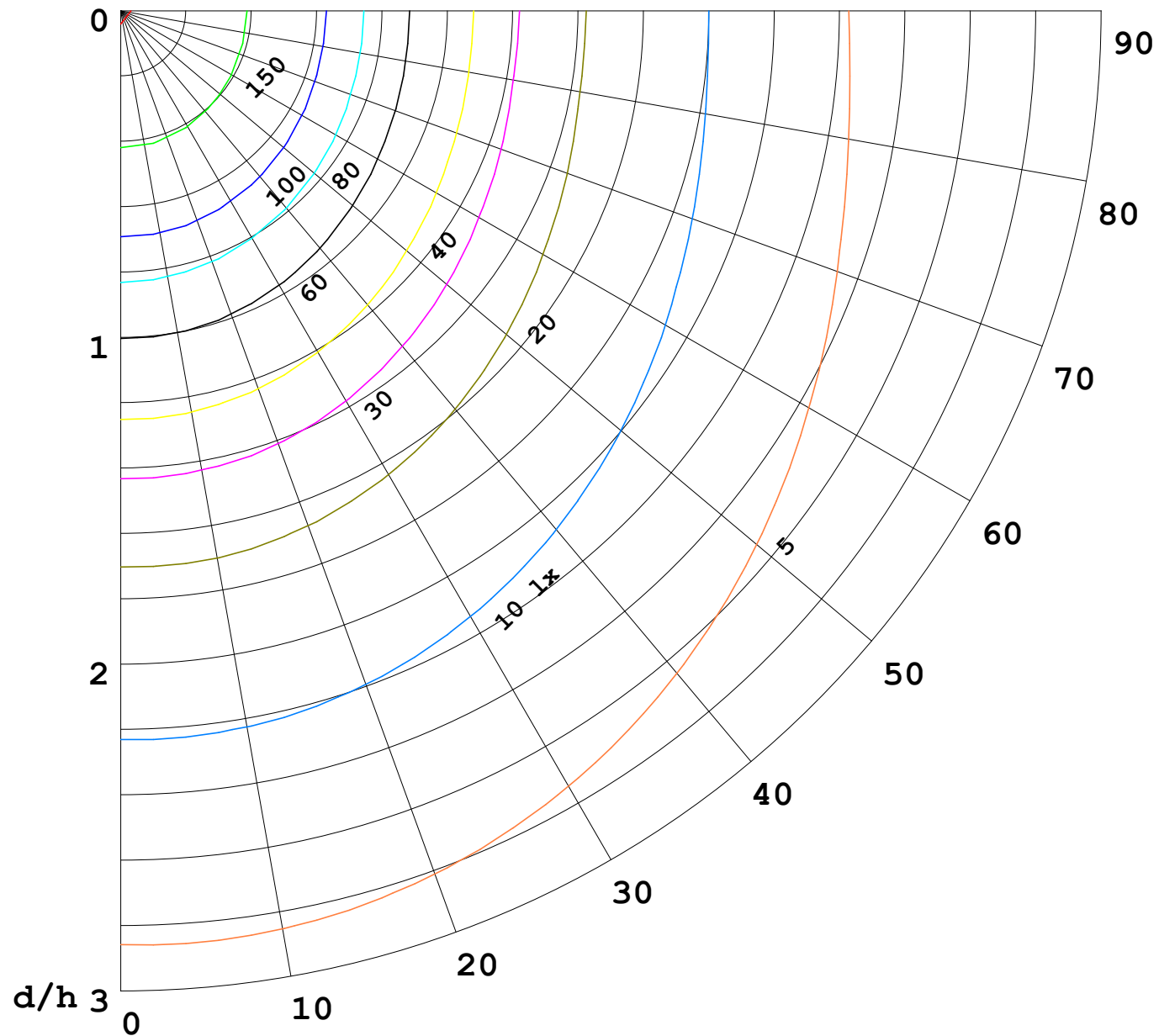
γ Range: 0 - 180DEG  
γ Interval: 1.0DEG  
Test System:EVERFINE GO-2000B\_V1 SYSTEM V2.00.488  
Humidity:65.0%  
Test Distance:6.360m [K=1.0000]  
Remarks:

I (cd)



1000 lm

$\kappa = 1$



F = 1000 lm  
 K = 0.7  
 Hcc = 0.8 m  
 Hfc = 0.0 m  
 Eave = 100 lx

	Pcc	Pw	Pfc
—————	70	50	30
—————	50	30	20

