

## LUMINAIRE PHOTOMETRIC TEST REPORT

Test:U:24.00V I:0.4820A P:11.57W PF:1.000 Freq:0Hz  
Lamp Flux:443.99x1 lm

NAME: SF21-24V-5050-60-3500K

TYPE:

WEIGHT:

SPEC.:

DIM.: Length=1m

SERIAL No.:

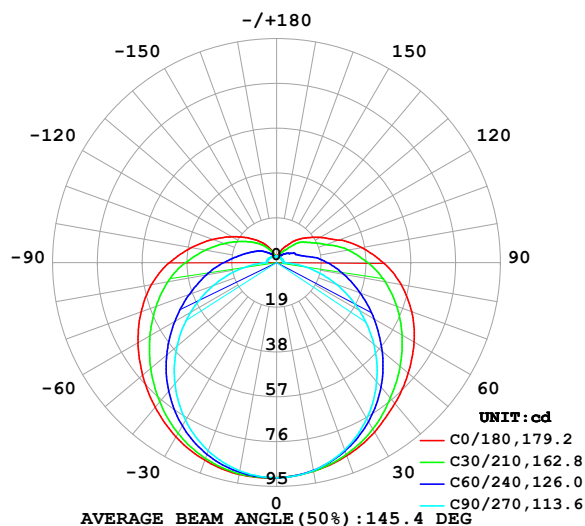
MFR.: OLympia lighting

SUR.:

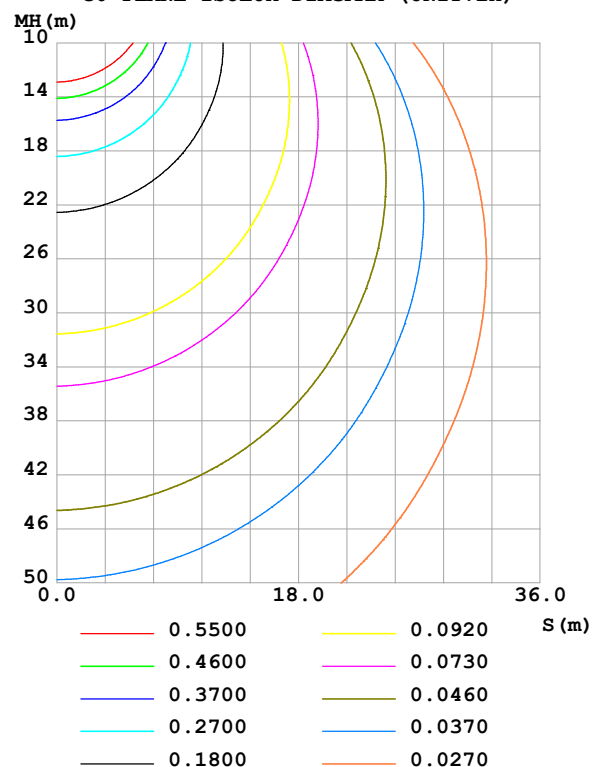
Shielding Angle:

DATA OF LAMP		PHOTOMETRIC DATA				Eff: 38.38 lm/W
MODEL	5050	I <sub>max</sub> (cd)	91.49	S/MH(C0/180)	1.40	
NOMINAL POWER(W)	12	LOR(%)	100.0	S/MH(C90/270)	1.26	
RATED VOLTAGE(V)	24	TOTAL FLUX(lm)	443.99	η UP,DN(C0-180)	9.7,39.9	
NOMINAL FLUX(lm)	443.99	CIE CLASS	SEMI-D.	η UP,DN(C180-360)	10.0,40.4	
LAMPS INSIDE	1	η up (%)	19.7	CIBSE SHR NOM	1.50	
TEST VOLTAGE(V)		η down (%)	80.3	CIBSE SHR MAX	1.55	

LUMINOUS INTENSITY DISTRIBUTION DIAGRAM



C0 PLANE ISOLUX DIAGRAM (UNIT:lx)



C Range: 0 - 360DEG  
C Interval: 30.0DEG  
Test Speed: HIGH  
Temperature:25.3℃  
Operators:  
Test Date:2025-03-06

γ Range: 0 - 180DEG  
γ Interval: 1.0DEG  
Test System:EVERFINE GO-2000B\_V1 SYSTEM V2.00.488  
Humidity:65.0%  
Test Distance:6.360m [K=1.0000]  
Remarks:

## ZONAL FLUX DIAGRAM

## ZONAL FLUX DIAGRAM:

$\gamma$	C0	C45	C90	C135	C180	C225	C270	C315	$\gamma$	$\Phi$ zone	$\Phi$ total	%lum, lamp
10	89.91	89.69	89.59	90.57	91.28	90.67	89.73	89.79	0- 10	8.661	8.661	1.95,1.95
20	87.19	85.80	84.52	87.26	89.25	87.49	84.99	86.04	10- 20	25.06	33.72	7.59,7.59
30	83.06	79.80	76.53	81.50	85.43	81.84	77.28	80.16	20- 30	38.73	72.44	16.3,16.3
40	78.09	72.01	66.07	73.78	80.18	74.18	67.13	72.49	30- 40	48.28	120.7	27.2,27.2
50	72.98	63.47	53.86	64.89	74.24	65.33	55.19	64.06	40- 50	53.15	173.9	39.2,39.2
60	67.35	54.59	40.59	55.55	67.93	56.02	42.06	55.30	50- 60	53.48	227.4	51.2,51.2
70	60.99	46.01	27.02	46.46	61.19	46.93	28.55	46.82	60- 70	50.03	277.4	62.5,62.5
80	53.62	37.86	13.97	38.07	53.88	38.56	15.48	38.71	70- 80	43.74	321.1	72.3,72.3
90	45.26	30.15	2.827	30.10	45.51	30.57	4.394	30.94	80- 90	35.61	356.7	80.3,80.3
100	36.74	22.71	2.732	23.16	36.79	23.60	4.258	23.56	90-100	27.64	384.4	86.6,86.6
110	28.10	16.14	2.674	17.76	28.89	18.13	4.056	17.27	100-110	20.59	405.0	91.2,91.2
120	21.44	12.67	2.636	13.68	21.99	13.91	3.793	13.28	110-120	14.78	419.7	94.5,94.5
130	16.31	9.922	2.581	10.46	16.47	10.59	3.483	9.924	120-130	10.34	430.1	96.9,96.9
140	12.20	6.710	2.581	7.768	12.09	7.777	3.177	6.678	130-140	6.759	436.8	98.4,98.4
150	8.151	4.541	2.581	5.543	8.194	5.472	2.893	4.650	140-150	3.932	440.8	99.3,99.3
160	5.396	3.328	2.587	3.941	4.873	3.711	2.729	3.405	150-160	2.044	442.8	99.7,99.7
170	2.936	2.728	2.642	3.034	2.751	2.796	2.674	2.807	160-170	0.9154	443.7	99.9,99.9
180	2.731	2.702	2.685	2.858	2.719	2.709	2.688	2.838	170-180	0.2641	444.0	100,100
DEG	LUMINOUS INTENSITY:cd									UNIT:lm		

Conical surface Flux(90deg): 146.98 lm

%lum = 33.1%

%lamp = 33.1%

Conical surface Flux(130deg): 253 lm

%lum = 57.0%

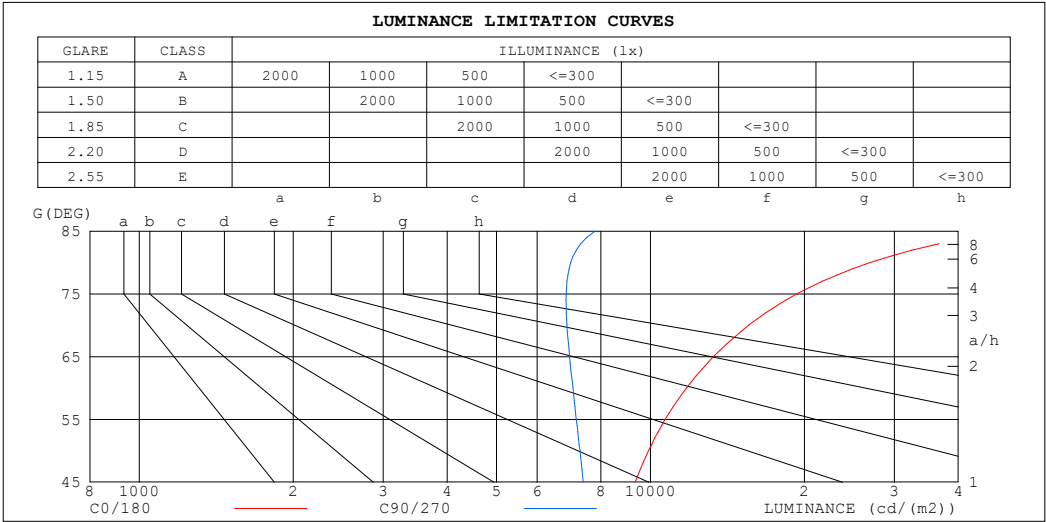
%lamp = 57.0%

C Range: 0 - 360DEG  
 C Interval: 30.0DEG  
 Test Speed: HIGH  
 Temperature:25.3℃  
 Operators:  
 Test Date:2025-03-06

$\gamma$  Range: 0 - 180DEG  
 $\gamma$  Interval: 1.0DEG  
 Test System:EVERFINE GO-2000B\_V1 SYSTEM V2.00.488  
 Humidity:65.0%  
 Test Distance:6.360m [K=1.0000]  
 Remarks:

LUMINANCE LIMITATION CURVES

Test:U:24.00V I:0.4820A P:11.57W PF:1.000 Freq:0Hz Lamp Flux:443.99x1 lm		
NAME: SF21-24V-5050-60-3500K	TYPE:	WEIGHT:
SPEC.:	DIM.: Length=1m	SERIAL No.:
MFR.: OLympia lighting	SUR.:	Shielding Angle:



LUMINANCE cd/(m2)		
G (DEG)	C0/180	C90/270
85	49674	7801
80	26956	6984
75	19354	6842
70	15569	6859
65	13286	6947
60	11760	7049
55	10688	7160
50	9912	7275
45	9335	7383

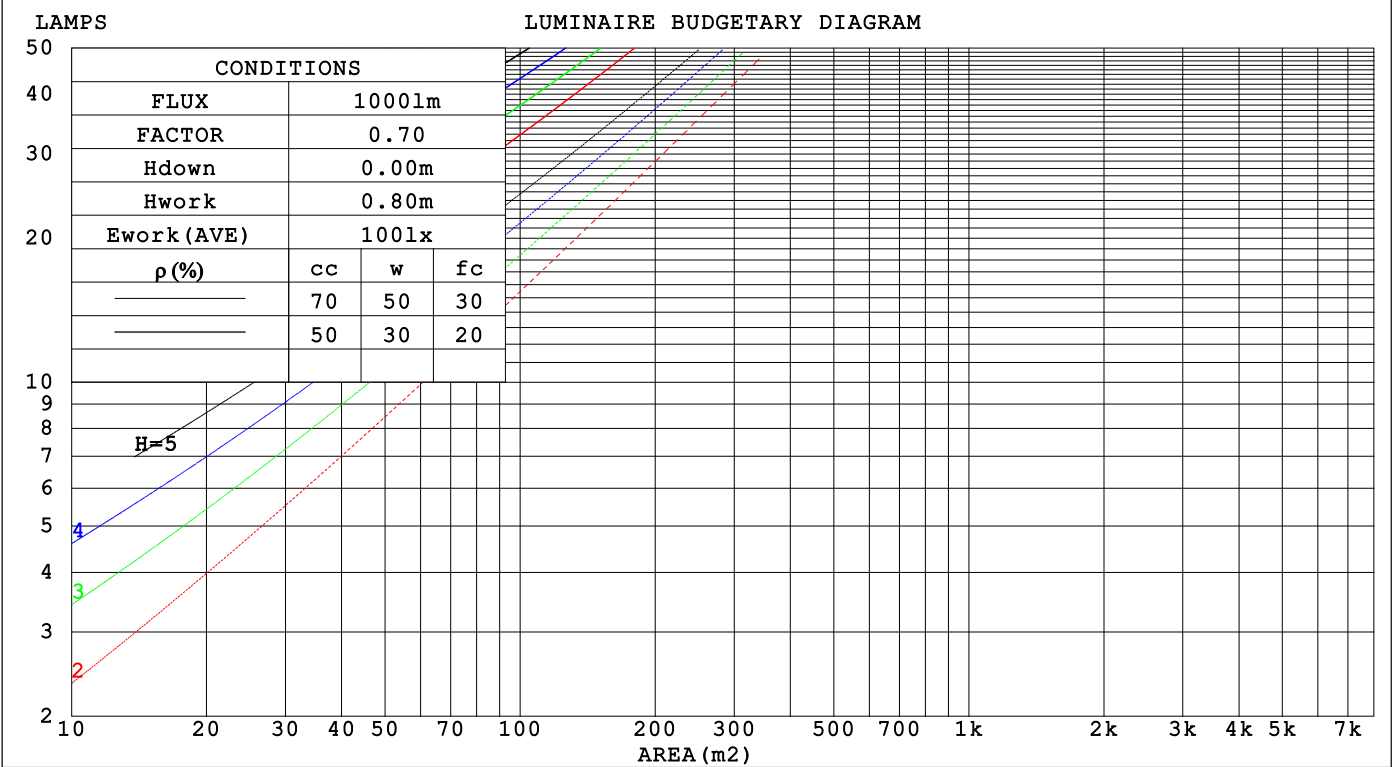
C Range: 0 - 360DEG  
C Interval: 30.0DEG  
Test Speed: HIGH  
Temperature:25.3℃  
Operators:  
Test Date:2025-03-06

γ Range: 0 - 180DEG  
γ Interval: 1.0DEG  
Test System:EVERFINE GO-2000B\_V1 SYSTEM V2.00.488  
Humidity:65.0%  
Test Distance:6.360m [K=1.0000]  
Remarks:

CU AND LUMINAIRE BUDGETARY ESTIMATE DIAGRAM

Test:U:24.00V I:0.4820A P:11.57W PF:1.000 Freq:0Hz		
Lamp Flux:443.99x1 lm		
NAME: SF21-24V-5050-60-3500K	TYPE:	WEIGHT:
SPEC.:	DIM.: Length=1m	SERIAL No.:
MFR.: OLYMPIA lighting	SUR.:	Shielding Angle:

pcc	80%			70%			50%			30%			10%			0
pw	50%	30%	10%	50%	30%	10%	50%	30%	10%	50%	30%	10%	50%	30%	10%	0
pfc	20%			20%			20%			20%			20%			0
RCR	RCR:Room Cavity Ratio			Coefficients of Utilization(CU)												
0.0	1.14	1.14	1.14	1.09	1.09	1.09	1.00	1.00	1.00	.92	.92	.92	.84	.84	.84	.80
1.0	.95	.89	.84	.91	.86	.81	.83	.79	.75	.75	.72	.69	.69	.66	.64	.60
2.0	.81	.73	.66	.77	.70	.64	.70	.65	.59	.64	.59	.55	.58	.54	.51	.48
3.0	.70	.61	.54	.67	.59	.52	.61	.54	.49	.56	.50	.45	.51	.46	.42	.39
4.0	.61	.52	.45	.59	.50	.43	.54	.46	.41	.49	.43	.38	.45	.40	.35	.32
5.0	.55	.45	.38	.52	.43	.37	.48	.40	.35	.44	.37	.32	.40	.35	.30	.28
6.0	.49	.39	.33	.47	.38	.32	.43	.35	.30	.39	.33	.28	.36	.31	.26	.24
7.0	.44	.35	.29	.42	.34	.28	.39	.32	.26	.36	.29	.25	.33	.27	.23	.21
8.0	.40	.31	.25	.38	.30	.24	.35	.28	.23	.33	.26	.22	.30	.25	.21	.18
9.0	.37	.28	.22	.35	.27	.22	.33	.26	.21	.30	.24	.20	.28	.22	.18	.16
10.0	.34	.26	.20	.32	.25	.20	.30	.23	.19	.28	.22	.18	.26	.20	.17	.15



C Range: 0 - 360DEG  
C Interval: 30.0DEG  
Test Speed: HIGH  
Temperature:25.3℃  
Operators:  
Test Date:2025-03-06

γ Range: 0 - 180DEG  
γ Interval: 1.0DEG  
Test System:EVERFINE GO-2000B\_V1 SYSTEM V2.00.488  
Humidity:65.0%  
Test Distance:6.360m [K=1.0000]  
Remarks:

## WEC AND CCEC

Test:U:24.00V I:0.4820A P:11.57W PF:1.000 Freq:0Hz Lamp Flux:443.99x1 lm		
NAME: SF21-24V-5050-60-3500K	TYPE:	WEIGHT:
SPEC.:	DIM.: Length=1m	SERIAL No.:
MFR.: OLympia lighting	SUR.:	Shielding Angle:

pcc	80%			70%			50%			30%			10%			0														
pw	50%	30%	10%	50%	30%	10%	50%	30%	10%	50%	30%	10%	50%	30%	10%	0														
pfc	20%			20%			20%			20%			20%			0														
RCR	RCR:Room Cavity Ratio															Wall Exitance Coefficients(WEC)														
0.0																														
1.0	.393	.223	.071	.380	.217	.069	.355	.204	.065	.332	.192	.061	.311	.180	.058															
2.0	.338	.185	.057	.326	.179	.055	.303	.169	.052	.283	.159	.050	.264	.149	.047															
3.0	.299	.159	.048	.288	.154	.046	.268	.145	.044	.249	.136	.042	.232	.128	.040															
4.0	.268	.139	.041	.259	.135	.040	.240	.127	.038	.223	.120	.036	.207	.113	.034															
5.0	.244	.124	.036	.235	.120	.035	.218	.113	.033	.202	.107	.032	.188	.100	.030															
6.0	.223	.112	.032	.215	.108	.031	.199	.102	.030	.185	.096	.028	.172	.090	.027															
7.0	.205	.102	.029	.198	.099	.028	.184	.093	.027	.171	.088	.025	.159	.082	.024															
8.0	.190	.093	.026	.184	.090	.026	.171	.085	.024	.159	.080	.023	.147	.076	.022															
9.0	.177	.086	.024	.171	.083	.023	.159	.079	.022	.148	.074	.021	.137	.070	.020															
10.0	.166	.079	.022	.160	.077	.022	.149	.073	.021	.139	.069	.020	.129	.065	.019															

pcc	80%			70%			50%			30%			10%			0
pw	50%	30%	10%	50%	30%	10%	50%	30%	10%	50%	30%	10%	50%	30%	10%	0
pfc	20%			20%			20%			20%			20%			0
RCR	RCR:Room Cavity Ratio						Ceiling Cavity Exitance Coefficients (CCEC)									
0.0	.340	.340	.340	.291	.291	.291	.198	.198	.198	.114	.114	.114	.036	.036	.036	
1.0	.337	.306	.279	.288	.263	.240	.197	.181	.166	.114	.105	.096	.036	.034	.031	
2.0	.330	.284	.244	.283	.244	.211	.194	.169	.147	.112	.098	.086	.036	.032	.028	
3.0	.323	.267	.223	.277	.231	.193	.190	.160	.136	.110	.094	.080	.035	.030	.026	
4.0	.315	.255	.209	.270	.220	.182	.186	.153	.128	.108	.090	.076	.035	.029	.025	
5.0	.307	.245	.199	.264	.212	.173	.182	.148	.122	.105	.087	.073	.034	.028	.024	
6.0	.300	.237	.192	.258	.205	.167	.178	.144	.118	.103	.085	.070	.033	.028	.023	
7.0	.293	.231	.187	.252	.200	.163	.174	.140	.116	.101	.083	.069	.033	.027	.023	
8.0	.286	.225	.183	.246	.195	.160	.170	.137	.113	.099	.081	.068	.032	.027	.022	
9.0	.280	.220	.180	.241	.191	.157	.167	.134	.112	.097	.079	.067	.032	.026	.022	
10.0	.274	.216	.178	.236	.188	.155	.164	.132	.110	.096	.078	.066	.031	.026	.022	

C Range: 0 - 360DEG  
C Interval: 30.0DEG  
Test Speed: HIGH  
Temperature:25.3℃  
Operators:  
Test Date:2025-03-06

γ Range: 0 - 180DEG  
γ Interval: 1.0DEG  
Test System:EVERFINE GO-2000B\_V1 SYSTEM V2.00.488  
Humidity:65.0%  
Test Distance:6.360m [K=1.0000]  
Remarks:

UGR(Unified Glare Rating) Table

Test:U:24.00V I:0.4820A P:11.57W PF:1.000 Freq:0Hz Lamp Flux:443.99x1 lm										
NAME: SF21-24V-5050-60-3500K					TYPE:			WEIGHT:		
SPEC.:					DIM.: Length=1m			SERIAL No.:		
MFR.: OLympia lighting					SUR.:			Shielding Angle:		
ceiling/cavity	0.7	0.7	0.5	0.5	0.3	0.7	0.7	0.5	0.5	0.3
walls	0.5	0.3	0.5	0.3	0.3	0.5	0.3	0.5	0.3	0.3
working plane	0.2	0.2	0.2	0.2	0.2	0.2	0.2	0.2	0.2	0.2
Room dimensions	Viewed crosswise					Viewed endwise				
x = 2H y = 2H	22.9	24.3	23.4	24.8	25.4	20.8	22.2	21.3	22.7	23.3
3H	25.7	27.0	26.3	27.5	28.2	22.5	23.8	23.1	24.4	25.0
4H	27.3	28.5	27.8	29.0	29.7	23.3	24.5	23.9	25.1	25.8
6H	29.0	30.1	29.6	30.7	31.4	24.0	25.1	24.6	25.7	26.4
8H	29.9	31.0	30.5	31.6	32.3	24.3	25.4	24.9	26.0	26.7
12H	31.0	32.1	31.7	32.7	33.4	24.5	25.6	25.1	26.2	26.9
4H 2H	23.5	24.7	24.0	25.2	25.9	21.9	23.1	22.5	23.7	24.4
3H	26.5	27.6	27.1	28.2	28.9	23.9	25.0	24.5	25.6	26.3
4H	28.3	29.2	28.9	29.9	30.6	24.9	25.9	25.5	26.5	27.2
6H	30.2	31.1	30.9	31.7	32.5	25.8	26.6	26.4	27.3	28.1
8H	31.3	32.1	32.0	32.8	33.6	26.2	27.0	26.8	27.7	28.4
12H	32.5	33.3	33.2	34.0	34.8	26.5	27.2	27.2	27.9	28.7
8H 4H	28.6	29.4	29.3	30.1	30.9	26.0	26.8	26.6	27.4	28.2
6H	30.9	31.6	31.6	32.3	33.1	27.2	27.9	27.9	28.6	29.4
8H	32.2	32.8	32.9	33.5	34.4	27.8	28.4	28.5	29.2	30.0
12H	33.7	34.2	34.4	34.9	35.8	28.4	28.9	29.1	29.6	30.5
12H 4H	28.7	29.4	29.3	30.1	30.9	26.3	27.1	27.0	27.8	28.6
6H	31.0	31.6	31.7	32.3	33.2	27.8	28.4	28.5	29.1	30.0
8H	32.4	33.0	33.2	33.7	34.6	28.6	29.1	29.3	29.8	30.7
Variations with the observer position at spacings(CIE Pub.117):										
S = 1.0H	+ 0.1 / - 0.1					+ 0.1 / - 0.1				
1.5H	+ 0.2 / - 0.3					+ 0.2 / - 0.3				
2.0H	+ 0.2 / - 0.3					+ 0.2 / - 0.4				

CIE Pub.117, 444.0 lm Total Lamp Luminous Flux Correct (8log(F/F0) = -2.8)  
Area: 0.0115 m2

C Range: 0 - 360DEG  
C Interval: 30.0DEG  
Test Speed: HIGH  
Temperature:25.3℃  
Operators:  
Test Date:2025-03-06

γ Range: 0 - 180DEG  
γ Interval: 1.0DEG  
Test System:EVERFINE GO-2000B\_V1 SYSTEM V2.00.488  
Humidity:65.0%  
Test Distance:6.360m [K=1.0000]  
Remarks:

## UTILIZATION FACTORS TABLE

Test:U:24.00V I:0.4820A P:11.57W PF:1.000 Freq:0Hz Lamp Flux:443.99x1 lm		
NAME: SF21-24V-5050-60-3500K	TYPE:	WEIGHT:
SPEC.:	DIM.: Length=1m	SERIAL No.:
MFR.: OLympia lighting	SUR.:	Shielding Angle:

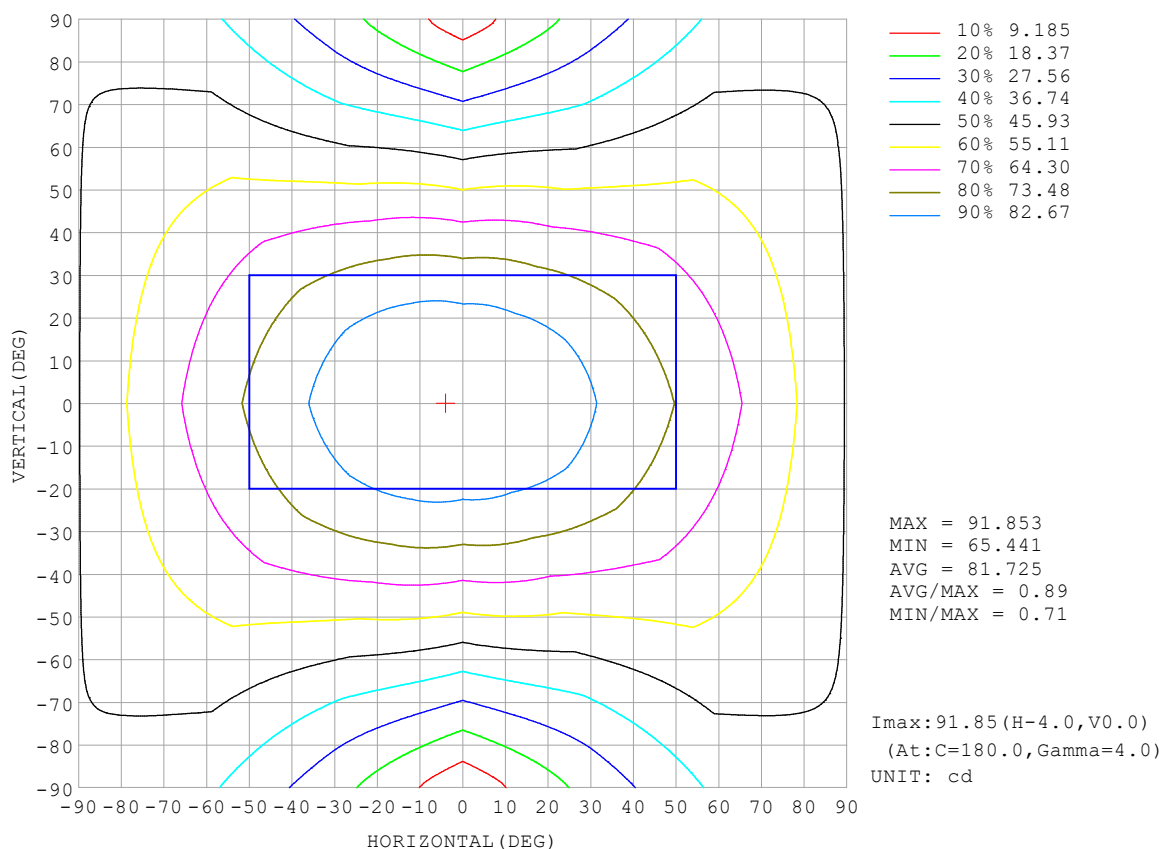
REFLECTANCE										
Ceiling	0.8	0.8	0.8	0.7	0.7	0.7	0.5	0.5	0.5	0
Walls	0.7	0.5	0.3	0.7	0.5	0.3	0.7	0.5	0.3	0
Working plane	0.2	0.2	0.2	0.2	0.2	0.2	0.2	0.2	0.2	0
ROOM INDEX	UTILIZATION FACTORS (PERCENT) $k(RI) \times RCR = 5$									
$k = 0.60$	47	34	27	46	34	27	44	33	26	20
0.80	56	43	35	54	42	34	51	41	33	25
1.00	64	50	42	62	49	41	58	50	40	31
1.25	70	58	49	68	56	48	64	54	46	36
1.50	76	63	54	73	61	53	68	58	51	40
2.00	83	72	63	80	69	62	74	65	59	47
2.50	87	77	69	84	74	67	77	70	63	50
3.00	91	82	74	87	79	72	81	74	68	54
4.00	96	88	81	92	85	78	85	79	74	59
5.00	99	92	86	95	88	83	87	82	77	62
ROOM INDEX	UF (total)									Direct
According to DIN EN 13032-2 2004			Suspended					SHRNOM = 1.25		

C Range: 0 - 360DEG  
 C Interval: 30.0DEG  
 Test Speed: HIGH  
 Temperature: 25.3 °C  
 Operators:  
 Test Date: 2025-03-06

γ Range: 0 - 180DEG  
 γ Interval: 1.0DEG  
 Test System: EVERFINE GO-2000B\_V1 SYSTEM V2.00.488  
 Humidity: 65.0%  
 Test Distance: 6.360m [K=1.0000]  
 Remarks:

## ISOCANDELA DIAGRAM

Test:U:24.00V I:0.4820A P:11.57W PF:1.000 Freq:0Hz Lamp Flux:443.99x1 lm		
NAME: SF21-24V-5050-60-3500K	TYPE:	WEIGHT:
SPEC.:	DIM.: Length=1m	SERIAL No.:
MFR.: OLympia lighting	SUR.:	Shielding Angle:



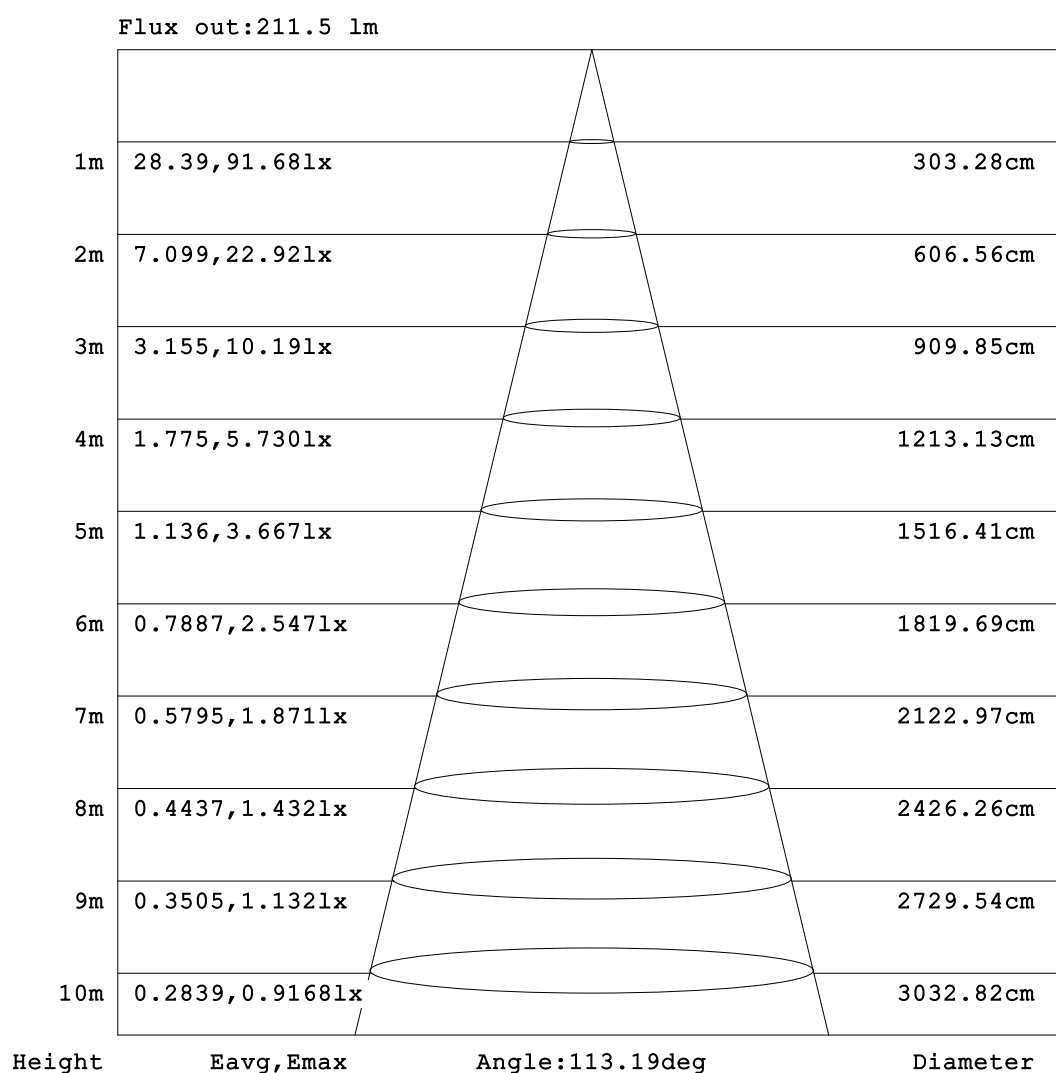
C Range: 0 - 360DEG  
C Interval: 30.0DEG  
Test Speed: HIGH  
Temperature: 25.3°C  
Operators:  
Test Date: 2025-03-06

γ Range: 0 - 180DEG  
γ Interval: 1.0DEG  
Test System: EVERFINE GO-2000B\_V1 SYSTEM V2.00.488  
Humidity: 65.0%  
Test Distance: 6.360m [K=1.0000]  
Remarks:



## AAI Figure

Test:U:24.00V I:0.4820A P:11.57W PF:1.000 Freq:0Hz Lamp Flux:443.99x1 lm		
NAME: SF21-24V-5050-60-3500K	TYPE:	WEIGHT:
SPEC.:	DIM.: Length=1m	SERIAL No.:
MFR.: OLympia lighting	SUR.:	Shielding Angle:



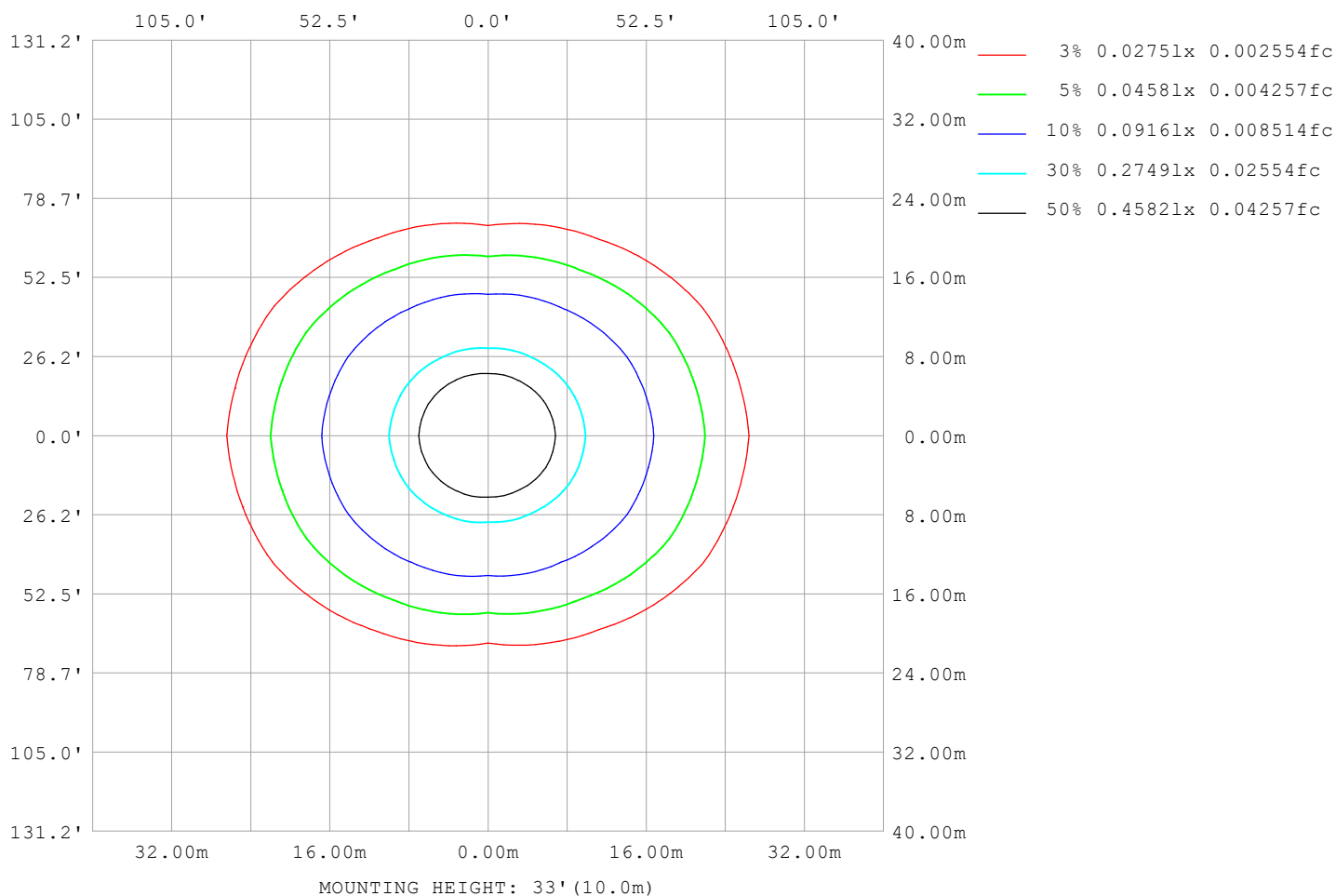
Note:The Curves indicate the illuminated area and the average illumination when the luminaire is at different distance.

C Range: 0 - 360DEG  
C Interval: 30.0DEG  
Test Speed: HIGH  
Temperature:25.3℃  
Operators:  
Test Date:2025-03-06

γ Range: 0 - 180DEG  
γ Interval: 1.0DEG  
Test System:EVERFINE GO-2000B\_V1 SYSTEM V2.00.488  
Humidity:65.0%  
Test Distance:6.360m [K=1.0000]  
Remarks:

## ISOLUX DIAGRAM

Test:U:24.00V I:0.4820A P:11.57W PF:1.000 Freq:0Hz Lamp Flux:443.99x1 lm		
NAME: SF21-24V-5050-60-3500K	TYPE:	WEIGHT:
SPEC.:	DIM.: Length=1m	SERIAL No.:
MFR.: OLympia lighting	SUR.:	Shielding Angle:



C Range: 0 - 360DEG  
C Interval: 30.0DEG  
Test Speed: HIGH  
Temperature: 25.3°C  
Operators:  
Test Date: 2025-03-06

γ Range: 0 - 180DEG  
γ Interval: 1.0DEG  
Test System: EVERFINE GO-2000B\_V1 SYSTEM V2.00.488  
Humidity: 65.0%  
Test Distance: 6.360m [K=1.0000]  
Remarks:

## LED Avg.L Report

Test:U:24.00V I:0.4820A P:11.57W PF:1.000 Freq:0Hz Lamp Flux:443.99x1 lm		
NAME: SF21-24V-5050-60-3500K	TYPE:	WEIGHT:
SPEC.:	DIM.: Length=1m	SERIAL No.:
MFR.: OLympia lighting	SUR.:	Shielding Angle:

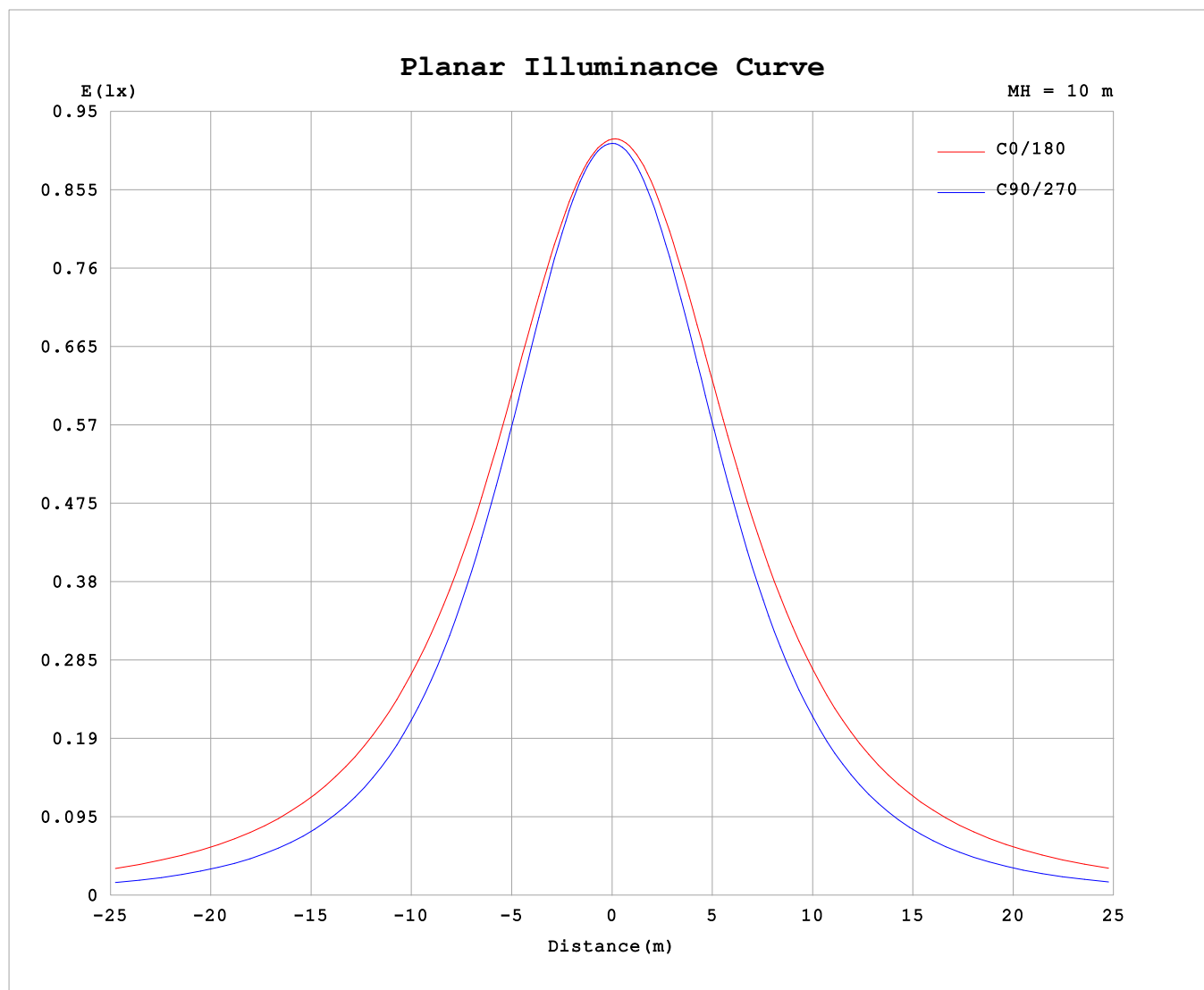
AvgL	cd/m2
L_0~180 (65) av	13263
L_0~180 (75) av	19322
L_0~180 (85) av	49617
L_90~270 (65) av	7111
L_90~270 (75) av	7107
L_90~270 (85) av	8532
L_45 (65) av	10511
L_45 (75) av	14357
L_45 (85) av	34920

Standard: GB/T 29293-2012

C Range: 0 - 360DEG  
C Interval: 30.0DEG  
Test Speed: HIGH  
Temperature:25.3℃  
Operators:  
Test Date:2025-03-06

γ Range: 0 - 180DEG  
γ Interval: 1.0DEG  
Test System:EVERFINE GO-2000B\_V1 SYSTEM V2.00.488  
Humidity:65.0%  
Test Distance:6.360m [K=1.0000]  
Remarks:

## Planar Illuminance Curve



C Range: 0 - 360DEG  
C Interval: 30.0DEG  
Test Speed: HIGH  
Temperature: 25.3 °C  
Operators:  
Test Date: 2025-03-06

$\gamma$  Range: 0 - 180DEG  
 $\gamma$  Interval: 1.0DEG  
Test System: EVERFINE GO-2000B\_V1 SYSTEM V2.00.488  
Humidity: 65.0%  
Test Distance: 6.360m [K=1.0000]  
Remarks:

## LUMINOUS DISTRIBUTION INTENSITY DATA

Test:U:24.00V I:0.4820A P:11.57W PF:1.000 Freq:0Hz Lamp Flux:443.99x1 lm																	
NAME: SF21-24V-5050-60-3500K									TYPE:						WEIGHT:		
SPEC.:									DIM.: Length=1m						SERIAL No.:		
MFR.: OLympia lighting									SUR.:						Shielding Angle:		

Table--1

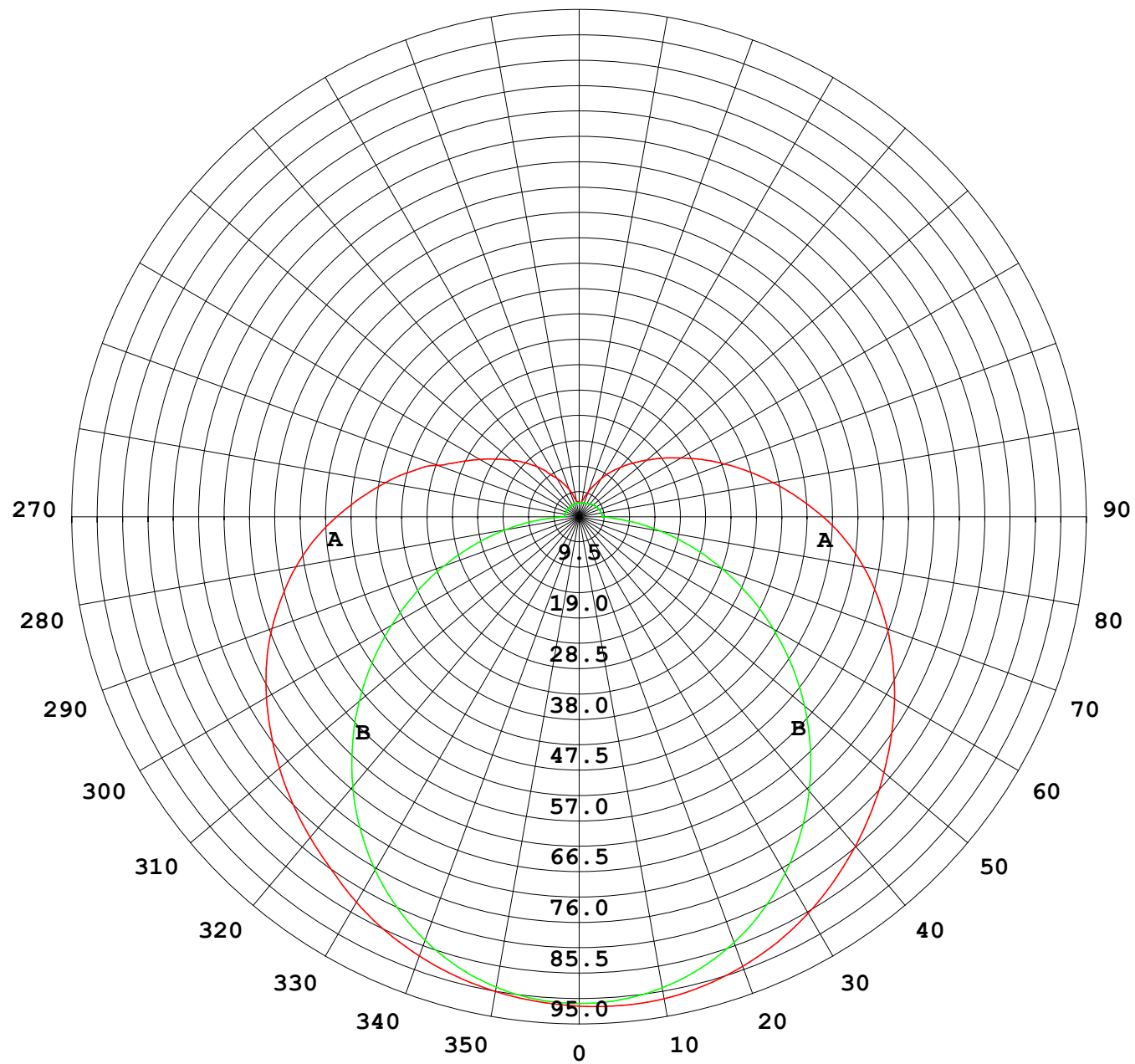
UNIT: cd

C (DEG) γ (DEG)		0	30	60	90	120	150	180	210	240	270	300	330						
0	91.3	91.3	91.3	91.3	91.3	91.3	91.3	91.3	91.3	91.3	91.3	91.3	91.3						
5	90.7	90.8	90.7	90.9	91.1	91.3	91.5	91.4	91.1	90.9	90.8	90.8							
10	89.9	89.9	89.5	89.6	90.2	90.9	91.3	91.0	90.3	89.7	89.7	89.9							
15	88.7	88.5	87.6	87.5	88.6	89.9	90.5	90.0	88.8	87.7	87.9	88.5							
20	87.2	86.6	85.0	84.5	86.2	88.3	89.2	88.4	86.6	85.0	85.4	86.7							
25	85.3	84.3	81.8	80.9	83.2	86.2	87.6	86.3	83.6	81.5	82.3	84.4							
30	83.1	81.6	78.0	76.5	79.5	83.5	85.4	83.6	80.0	77.3	78.6	81.7							
35	80.5	78.5	73.7	71.6	75.2	80.4	82.9	80.6	75.9	72.5	74.4	78.6							
40	78.1	75.1	68.9	66.1	70.6	77.0	80.2	77.1	71.2	67.1	69.8	75.2							
45	75.6	71.8	63.9	60.1	65.5	73.4	77.3	73.5	66.2	61.4	64.9	71.9							
50	73.0	68.4	58.5	53.9	60.1	69.7	74.2	69.8	60.9	55.2	59.6	68.5							
55	70.2	65.0	53.0	47.3	54.6	65.8	71.1	65.9	55.4	48.7	54.3	65.0							
60	67.4	61.4	47.7	40.6	49.1	62.0	67.9	62.1	49.9	42.1	49.1	61.5							
65	64.3	57.9	42.6	33.8	43.7	58.2	64.6	58.2	44.6	35.3	44.1	58.0							
70	61.0	54.3	37.7	27.0	38.6	54.3	61.2	54.4	39.4	28.5	39.2	54.4							
75	57.4	50.5	33.2	20.4	33.8	50.6	57.6	50.7	34.6	21.9	34.7	50.8							
80	53.6	46.7	29.0	14.0	29.4	46.7	53.9	46.8	30.3	15.5	30.5	47.0							
85	49.6	42.8	25.1	7.83	25.4	42.8	49.9	42.9	26.3	9.27	26.5	43.0							
90	45.3	38.7	21.6	2.83	21.7	38.5	45.5	38.7	22.5	4.39	22.9	39.0							
95	40.9	34.7	18.5	2.76	18.4	34.4	41.0	34.5	19.2	4.34	19.8	35.0							
100	36.7	30.9	14.5	2.73	15.8	30.5	36.8	30.7	16.5	4.26	15.9	31.2							
105	32.6	26.8	11.4	2.70	13.6	26.9	32.7	27.1	14.3	4.16	13.2	26.9							
110	28.1	22.5	9.73	2.67	11.9	23.6	28.9	23.8	12.5	4.06	11.5	23.1							
115	24.4	19.6	8.86	2.66	10.5	20.6	25.3	20.7	11.1	3.92	10.00	20.0							
120	21.4	17.1	8.24	2.64	9.39	18.0	22.0	18.0	9.82	3.79	9.09	17.5							
125	18.8	15.2	6.82	2.62	8.33	15.6	19.1	15.7	8.67	3.64	7.56	15.2							
130	16.3	13.6	6.29	2.58	7.29	13.6	16.5	13.6	7.57	3.48	6.69	13.2							
135	14.3	11.2	5.56	2.58	6.31	11.8	14.2	11.8	6.40	3.33	5.80	11.1							
140	12.2	8.63	4.78	2.58	5.43	10.1	12.1	10.1	5.50	3.18	4.92	8.43							
145	9.93	6.68	4.13	2.58	4.74	8.51	10.1	8.45	4.79	3.02	4.36	6.97							
150	8.15	5.48	3.60	2.58	4.21	6.88	8.19	6.75	4.19	2.89	3.78	5.52							
155	6.81	4.61	3.03	2.58	3.56	5.61	6.40	5.44	3.40	2.81	3.21	4.50							
160	5.40	3.83	2.83	2.59	3.25	4.64	4.87	4.42	3.00	2.73	2.91	3.90							
165	3.98	3.09	2.68	2.61	3.02	3.65	3.86	3.37	2.74	2.68	2.71	3.15							
170	2.94	2.80	2.66	2.64	2.91	3.15	2.75	2.90	2.69	2.67	2.76	2.86							
175	2.77	2.72	2.66	2.67	2.88	2.91	2.70	2.73	2.70	2.69	2.81	2.77							
180	2.73	2.72	2.68	2.69	2.87	2.85	2.72	2.72	2.70	2.69	2.84	2.83							

C Range: 0 - 360DEG  
C Interval: 30.0DEG  
Test Speed: HIGH  
Temperature:25.3℃  
Operators:  
Test Date:2025-03-06

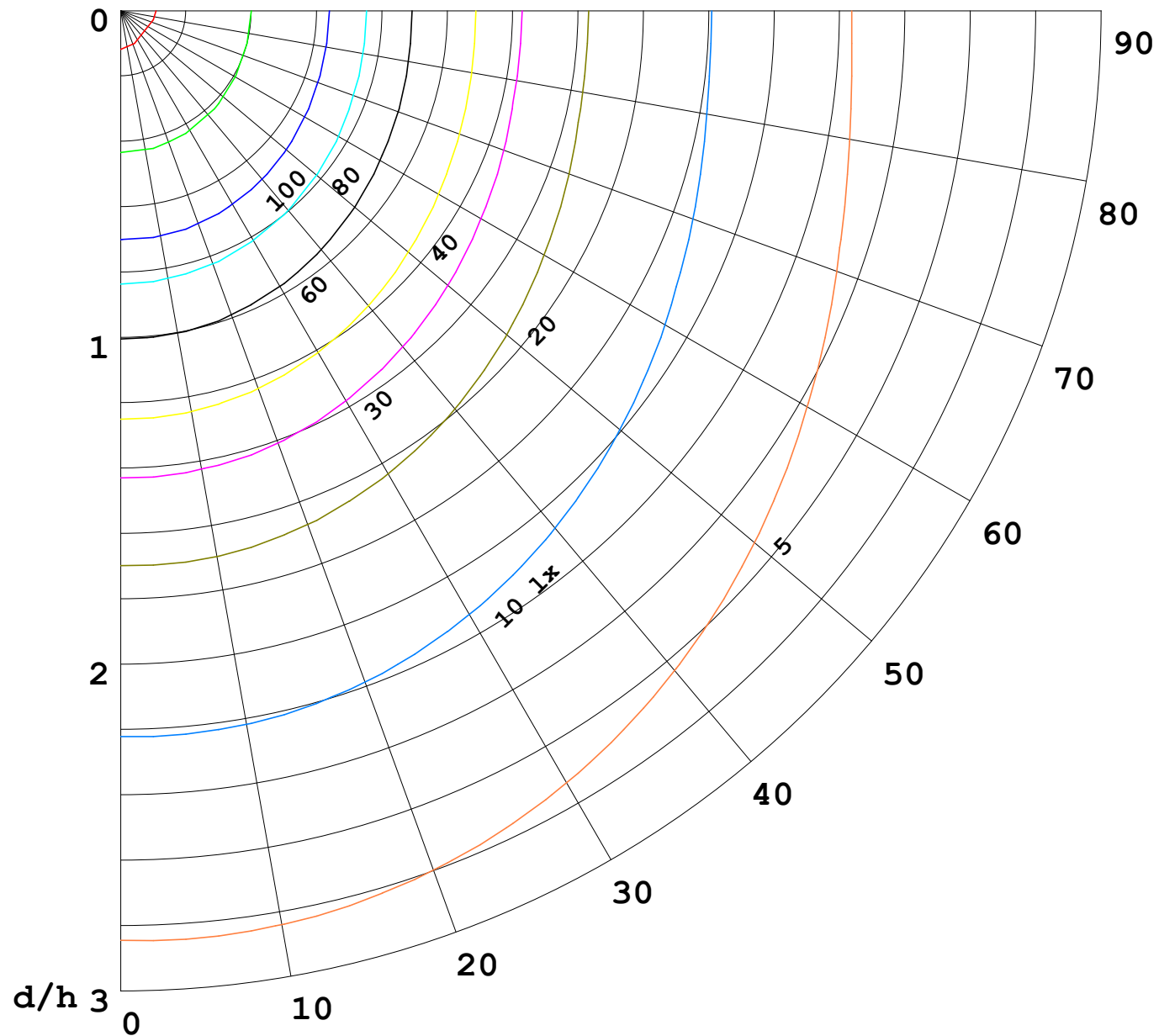
γ Range: 0 - 180DEG  
γ Interval: 1.0DEG  
Test System:EVERFINE GO-2000B\_V1 SYSTEM V2.00.488  
Humidity:65.0%  
Test Distance:6.360m [K=1.0000]  
Remarks:

I (cd)



1000 lm

$\kappa = 1$



F = 1000 lm  
 K = 0.7  
 Hcc = 0.8 m  
 Hfc = 0.0 m  
 Eave = 100 lx

	Pcc	Pw	Pfc
—————	70	50	30
—————	50	30	20

