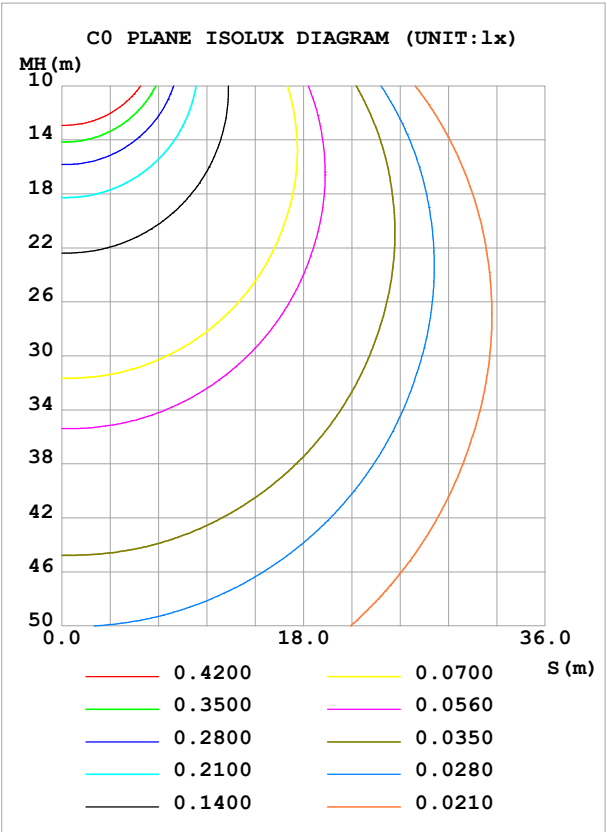
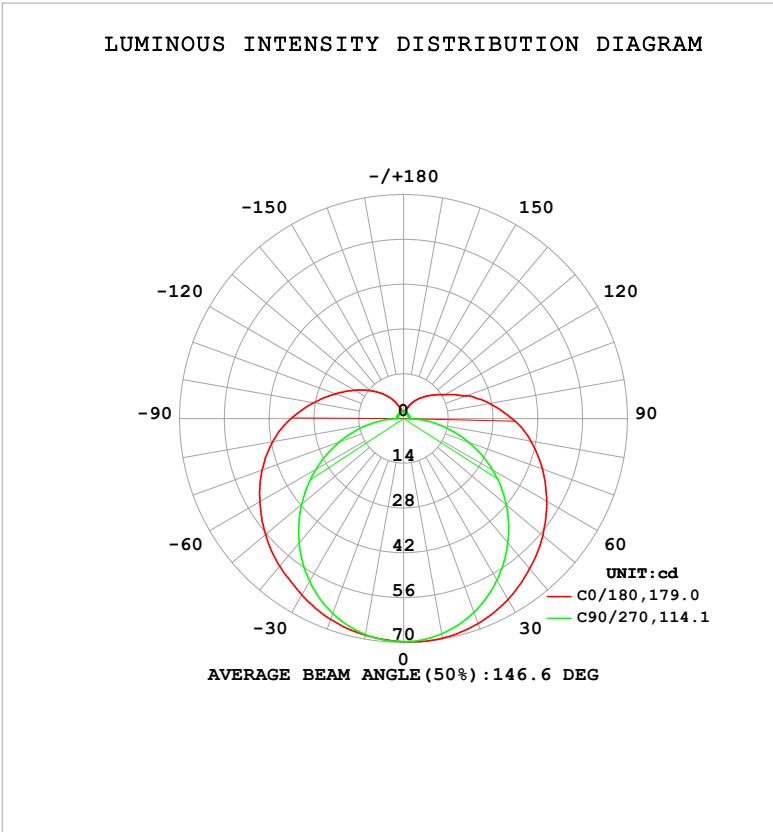


LUMINAIRE PHOTOMETRIC TEST REPORT

Test:U:24.00V I:0.4717A P:11.32W PF:1.000 Freq:0Hz Lamp Flux:338.77lx1 lm		
NAME: SF21-24V-5050-60-2200-80	TYPE:	WEIGHT:
SPEC.:	DIM.: Length=1m	SERIAL No.:
MFR.:	SUR.:	Shielding Angle:

DATA OF LAMP		PHOTOMETRIC DATA				Eff: 29.92 lm/W
MODEL		Imax (cd)	69.90	S/MH(C0/180)		1.37
NOMINAL POWER(W)		LOR(%)	100.0	S/MH(C90/270)		1.25
RATED VOLTAGE(V)		TOTAL FLUX(lm)	338.77	η UP,DN(C0-180)		9.5,40.2
NOMINAL FLUX(lm)	338.771	CIE CLASS	SEMI-D.	η UP,DN(C180-360)		9.9,40.5
LAMPS INSIDE	1	η up (%)	19.3	CIBSE SHR NOM		1.50
TEST VOLTAGE(V)		η down (%)	80.7	CIBSE SHR MAX		1.55



C Range: 0 - 360DEG	γ Range: 0 - 180DEG
C Interval: 22.5DEG	γ Interval: 1.0DEG
Test Speed: HIGH	Test System:EVERFINE GO-2000B_V1 SYSTEM V2.00.488
Temperature:25.3℃	Humidity:65.0%
Operators:Cloud	Test Distance:6.360m [K=1.0000]
Test Date:2024-10-30	Remarks:

## ZONAL FLUX DIAGRAM

## ZONAL FLUX DIAGRAM:

$\gamma$	C0	C45	C90	C135	C180	C225	C270	C315	$\gamma$	$\Phi$ zone	$\Phi$ total	%lum, lamp
10	69.72	69.17	68.34	68.44	68.79	68.62	68.57	69.29	0- 10	6.616	6.616	1.95,1.95
20	68.18	66.59	64.43	65.49	66.79	65.86	64.83	66.86	10- 20	19.14	25.75	7.6,7.6
30	65.29	62.18	58.37	60.88	63.66	61.43	58.77	62.58	20- 30	29.57	55.32	16.3,16.3
40	61.28	56.38	50.72	54.99	60.28	55.66	50.87	56.80	30- 40	36.91	92.23	27.2,27.2
50	56.84	49.60	41.92	48.94	56.38	49.68	41.61	50.04	40- 50	40.77	133.0	39.3,39.3
60	51.69	42.64	32.15	42.25	51.91	43.05	31.60	43.18	50- 60	41.13	174.1	51.4,51.4
70	46.19	35.81	21.69	35.60	47.05	36.47	21.34	36.29	60- 70	38.43	212.6	62.7,62.7
80	40.41	29.52	11.25	29.45	41.56	30.36	11.22	29.99	70- 80	33.50	246.1	72.6,72.6
90	33.99	23.51	1.767	23.35	35.22	24.23	2.012	24.03	80- 90	27.19	273.2	80.7,80.7
100	27.37	18.07	1.648	17.94	28.64	18.74	2.117	17.40	90-100	20.88	294.1	86.8,86.8
110	20.91	12.14	1.732	13.87	22.75	14.52	2.163	11.78	100-110	15.37	309.5	91.4,91.4
120	15.15	8.783	1.764	10.86	17.80	11.36	2.154	8.936	110-120	10.99	320.5	94.6,94.6
130	11.40	6.492	1.801	8.327	13.68	8.729	2.140	6.534	120-130	7.690	328.2	96.9,96.9
140	8.588	4.947	1.836	5.965	10.10	6.297	2.151	5.312	130-140	5.071	333.2	98.4,98.4
150	6.021	3.647	2.006	3.955	6.793	4.180	2.195	3.860	140-150	3.020	336.3	99.3,99.3
160	3.791	2.859	2.102	2.513	3.847	2.584	2.250	2.798	150-160	1.578	337.8	99.7,99.7
170	2.187	2.340	2.189	2.260	2.038	2.268	2.273	2.385	160-170	0.7163	338.6	99.9,99.9
180	2.072	2.271	2.261	2.318	2.069	2.285	2.273	2.321	170-180	0.2161	338.8	100,100
DEG	LUMINOUS INTENSITY:cd									UNIT:lm		

Conical surface Flux(90deg): 112.35 lm

%lum = 33.2%

%lamp = 33.2%

Conical surface Flux(130deg): 193.83 lm

%lum = 57.2%

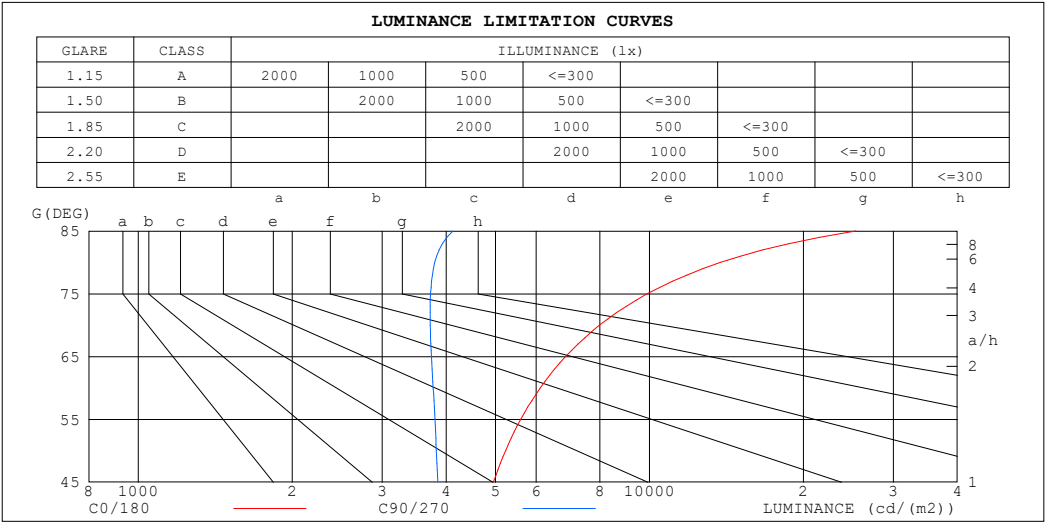
%lamp = 57.2%

C Range: 0 - 360DEG  
 C Interval: 22.5DEG  
 Test Speed: HIGH  
 Temperature:25.3℃  
 Operators:Cloud  
 Test Date:2024-10-30

$\gamma$  Range: 0 - 180DEG  
 $\gamma$  Interval: 1.0DEG  
 Test System:EVERFINE GO-2000B\_V1 SYSTEM V2.00.488  
 Humidity:65.0%  
 Test Distance:6.360m [K=1.0000]  
 Remarks:

LUMINANCE LIMITATION CURVES

Test:U:24.00V I:0.4717A P:11.32W PF:1.000 Freq:0Hz Lamp Flux:338.771x1 lm		
NAME: SF21-24V-5050-60-2200-80	TYPE:	WEIGHT:
SPEC.:	DIM.: Length=1m	SERIAL No.:
MFR.:	SUR.:	Shielding Angle:



LUMINANCE cd/(m2)		
G (DEG)	C0/180	C90/270
85	25346	4126
80	13765	3802
75	9899	3729
70	7988	3724
65	6851	3746
60	6114	3775
55	5597	3804
50	5230	3829
45	4950	3855

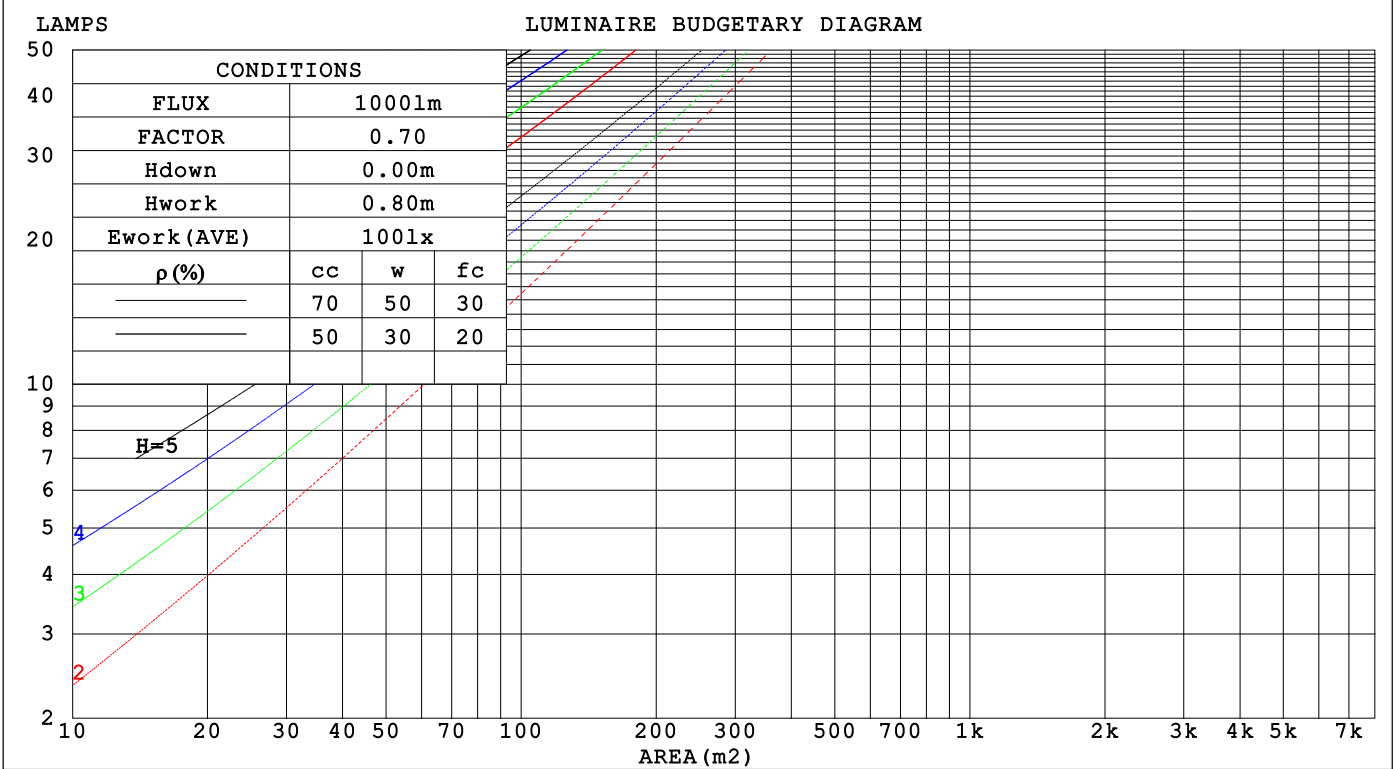
C Range: 0 - 360DEG  
C Interval: 22.5DEG  
Test Speed: HIGH  
Temperature:25.3℃  
Operators:Cloud  
Test Date:2024-10-30

γ Range: 0 - 180DEG  
γ Interval: 1.0DEG  
Test System:EVERFINE GO-2000B\_V1 SYSTEM V2.00.488  
Humidity:65.0%  
Test Distance:6.360m [K=1.0000]  
Remarks:

CU AND LUMINAIRE BUDGETARY ESTIMATE DIAGRAM

Test:U:24.00V I:0.4717A P:11.32W PF:1.000 Freq:0Hz		
Lamp Flux:338.77lx1 lm		
NAME: SF21-24V-5050-60-2200-80	TYPE:	WEIGHT:
SPEC.:	DIM.: Length=1m	SERIAL No.:
MFR.:	SUR.:	Shielding Angle:

pcc	80%			70%			50%			30%			10%			0
pw	50%	30%	10%	50%	30%	10%	50%	30%	10%	50%	30%	10%	50%	30%	10%	0
pfc	20%			20%			20%			20%			20%			0
RCR	RCR:Room Cavity Ratio			Coefficients of Utilization(CU)												
0.0	1.14	1.14	1.14	1.10	1.10	1.10	1.00	1.00	1.00	.92	.92	.92	.84	.84	.84	.81
1.0	.95	.89	.84	.91	.86	.81	.83	.79	.75	.75	.72	.69	.69	.66	.64	.60
2.0	.81	.73	.66	.77	.70	.64	.71	.65	.60	.64	.59	.55	.58	.55	.51	.48
3.0	.70	.61	.54	.67	.59	.52	.61	.54	.49	.56	.50	.45	.51	.46	.42	.39
4.0	.61	.52	.45	.59	.50	.43	.54	.46	.41	.49	.43	.38	.45	.40	.35	.32
5.0	.55	.45	.38	.52	.43	.37	.48	.40	.35	.44	.37	.32	.40	.35	.30	.28
6.0	.49	.39	.33	.47	.38	.32	.43	.35	.30	.39	.33	.28	.36	.31	.26	.24
7.0	.44	.35	.28	.42	.34	.28	.39	.32	.26	.36	.29	.25	.33	.27	.23	.21
8.0	.40	.31	.25	.38	.30	.24	.35	.28	.23	.33	.26	.22	.30	.25	.21	.18
9.0	.36	.28	.22	.35	.27	.22	.33	.26	.21	.30	.24	.20	.28	.22	.19	.16
10.0	.34	.25	.20	.32	.25	.20	.30	.23	.19	.28	.22	.18	.26	.21	.17	.15



C Range: 0 - 360DEG  
C Interval: 22.5DEG  
Test Speed: HIGH  
Temperature:25.3℃  
Operators:Cloud  
Test Date:2024-10-30

γ Range: 0 - 180DEG  
γ Interval: 1.0DEG  
Test System:EVERFINE GO-2000B\_V1 SYSTEM V2.00.488  
Humidity:65.0%  
Test Distance:6.360m [K=1.0000]  
Remarks:

## WEC AND CCEC

Test:U:24.00V I:0.4717A P:11.32W PF:1.000 Freq:0Hz Lamp Flux:338.771x1 lm		
NAME: SF21-24V-5050-60-2200-80	TYPE:	WEIGHT:
SPEC.:	DIM.: Length=1m	SERIAL No.:
MFR.:	SUR.:	Shielding Angle:

pcc	80%			70%			50%			30%			10%			0
pw	50%	30%	10%	50%	30%	10%	50%	30%	10%	50%	30%	10%	50%	30%	10%	0
pfc	20%			20%			20%			20%			20%			0
RCR	RCR:Room Cavity Ratio						Wall Exitance Coefficients(WEC)									
0.0																
1.0	.393	.224	.071	.380	.217	.069	.356	.204	.065	.333	.192	.062	.312	.181	.058	
2.0	.338	.185	.057	.326	.180	.055	.304	.169	.053	.283	.159	.050	.264	.150	.047	
3.0	.299	.159	.048	.289	.155	.047	.268	.145	.044	.250	.137	.042	.232	.129	.040	
4.0	.269	.140	.041	.259	.136	.040	.241	.128	.038	.224	.120	.036	.208	.113	.034	
5.0	.244	.124	.036	.235	.121	.035	.218	.114	.033	.203	.107	.032	.188	.101	.030	
6.0	.223	.112	.032	.215	.109	.031	.200	.102	.030	.186	.097	.028	.172	.091	.027	
7.0	.206	.102	.029	.198	.099	.028	.184	.093	.027	.171	.088	.026	.159	.083	.024	
8.0	.190	.093	.026	.184	.090	.026	.171	.085	.024	.159	.081	.023	.148	.076	.022	
9.0	.177	.086	.024	.171	.083	.023	.159	.079	.022	.148	.074	.021	.138	.070	.020	
10.0	.166	.080	.022	.160	.077	.022	.149	.073	.021	.139	.069	.020	.129	.065	.019	

pcc	80%			70%			50%			30%			10%			0
pw	50%	30%	10%	50%	30%	10%	50%	30%	10%	50%	30%	10%	50%	30%	10%	0
pfc	20%			20%			20%			20%			20%			0
RCR	RCR:Room Cavity Ratio						Ceiling Cavity Exitance Coefficients (CCEC)									
0.0	.338	.338	.338	.289	.289	.289	.197	.197	.197	.113	.113	.113	.036	.036	.036	
1.0	.335	.304	.276	.286	.261	.238	.196	.179	.164	.113	.104	.096	.036	.033	.031	
2.0	.328	.281	.242	.281	.242	.209	.193	.168	.146	.111	.097	.086	.036	.032	.028	
3.0	.321	.265	.221	.275	.229	.191	.189	.159	.134	.109	.093	.079	.035	.030	.026	
4.0	.313	.252	.206	.268	.218	.179	.185	.152	.126	.107	.089	.075	.034	.029	.025	
5.0	.305	.243	.197	.262	.210	.171	.180	.147	.121	.105	.086	.072	.034	.028	.024	
6.0	.298	.235	.190	.256	.203	.165	.176	.142	.117	.102	.084	.070	.033	.027	.023	
7.0	.290	.228	.185	.250	.198	.161	.173	.139	.114	.100	.082	.068	.032	.027	.022	
8.0	.284	.223	.181	.244	.193	.158	.169	.136	.112	.098	.080	.067	.032	.026	.022	
9.0	.277	.218	.178	.239	.189	.155	.166	.133	.110	.096	.079	.066	.031	.026	.022	
10.0	.271	.214	.175	.234	.186	.153	.162	.131	.109	.095	.077	.065	.031	.025	.022	

C Range: 0 - 360DEG  
C Interval: 22.5DEG  
Test Speed: HIGH  
Temperature:25.3℃  
Operators:Cloud  
Test Date:2024-10-30

γ Range: 0 - 180DEG  
γ Interval: 1.0DEG  
Test System:EVERFINE GO-2000B\_V1 SYSTEM V2.00.488  
Humidity:65.0%  
Test Distance:6.360m [K=1.0000]  
Remarks:

UGR(Unified Glare Rating) Table

Test:U:24.00V I:0.4717A P:11.32W PF:1.000 Freq:0Hz Lamp Flux:338.771x1 lm											
NAME: SF21-24V-5050-60-2200-80					TYPE:			WEIGHT:			
SPEC.:					DIM.: Length=1m			SERIAL No.:			
MFR.:					SUR.:			Shielding Angle:			
ceiling/cavity	0.7	0.7	0.5	0.5	0.3	0.7	0.7	0.5	0.5	0.3	
walls	0.5	0.3	0.5	0.3	0.3	0.5	0.3	0.5	0.3	0.3	
working plane	0.2	0.2	0.2	0.2	0.2	0.2	0.2	0.2	0.2	0.2	
Room dimensions		Viewed crosswise				Viewed endwise					
x = 2H y = 2H	21.8	23.2	22.3	23.7	24.3	19.8	21.1	20.3	21.7	22.3	
	3H	24.6	25.8	25.1	26.4	27.0	21.5	22.8	22.1	23.3	23.9
	4H	26.1	27.3	26.7	27.9	28.5	22.3	23.5	22.9	24.1	24.7
	6H	27.8	28.9	28.4	29.5	30.2	23.0	24.1	23.6	24.7	25.4
	8H	28.7	29.8	29.3	30.4	31.1	23.2	24.3	23.9	24.9	25.6
	12H	29.8	30.9	30.4	31.5	32.2	23.5	24.5	24.1	25.1	25.9
4H	2H	22.4	23.6	22.9	24.1	24.8	20.9	22.1	21.5	22.7	23.3
	3H	25.4	26.4	26.0	27.0	27.8	22.9	23.9	23.5	24.5	25.2
	4H	27.1	28.1	27.7	28.7	29.5	23.8	24.8	24.5	25.4	26.2
	6H	29.0	29.9	29.7	30.6	31.3	24.7	25.6	25.4	26.2	27.0
	8H	30.1	30.9	30.8	31.6	32.4	25.1	25.9	25.8	26.6	27.4
	12H	31.3	32.1	32.0	32.8	33.6	25.4	26.2	26.1	26.8	27.7
8H	4H	27.5	28.3	28.1	29.0	29.7	24.9	25.7	25.6	26.4	27.2
	6H	29.7	30.4	30.4	31.1	31.9	26.1	26.8	26.8	27.5	28.3
	8H	31.0	31.6	31.7	32.3	33.2	26.7	27.3	27.4	28.0	28.9
	12H	32.5	33.0	33.2	33.8	34.6	27.2	27.8	28.0	28.5	29.4
12H	4H	27.5	28.2	28.2	28.9	29.7	25.2	26.0	25.9	26.7	27.5
	6H	29.8	30.4	30.6	31.2	32.0	26.7	27.3	27.4	28.0	28.9
	8H	31.2	31.8	32.0	32.5	33.4	27.4	28.0	28.2	28.7	29.6
Variations with the observer position at spacings(CIE Pub.117):											
S = 1.0H	+ 0.1 / - 0.1					+ 0.1 / - 0.1					
1.5H	+ 0.2 / - 0.3					+ 0.2 / - 0.3					
2.0H	+ 0.3 / - 0.4					+ 0.2 / - 0.4					

CIE Pub.117, 338.8 lm Total Lamp Luminous Flux Correct (8log(F/F0) = -3.8)  
Area: 0.017 m2

C Range: 0 - 360DEG  
C Interval: 22.5DEG  
Test Speed: HIGH  
Temperature:25.3℃  
Operators:Cloud  
Test Date:2024-10-30

γ Range: 0 - 180DEG  
γ Interval: 1.0DEG  
Test System:EVERFINE GO-2000B\_V1 SYSTEM V2.00.488  
Humidity:65.0%  
Test Distance:6.360m [K=1.0000]  
Remarks:

## UTILIZATION FACTORS TABLE

Test:U:24.00V I:0.4717A P:11.32W PF:1.000 Freq:0Hz Lamp Flux:338.771x1 lm		
NAME: SF21-24V-5050-60-2200-80	TYPE:	WEIGHT:
SPEC.:	DIM.: Length=1m	SERIAL No.:
MFR.:	SUR.:	Shielding Angle:

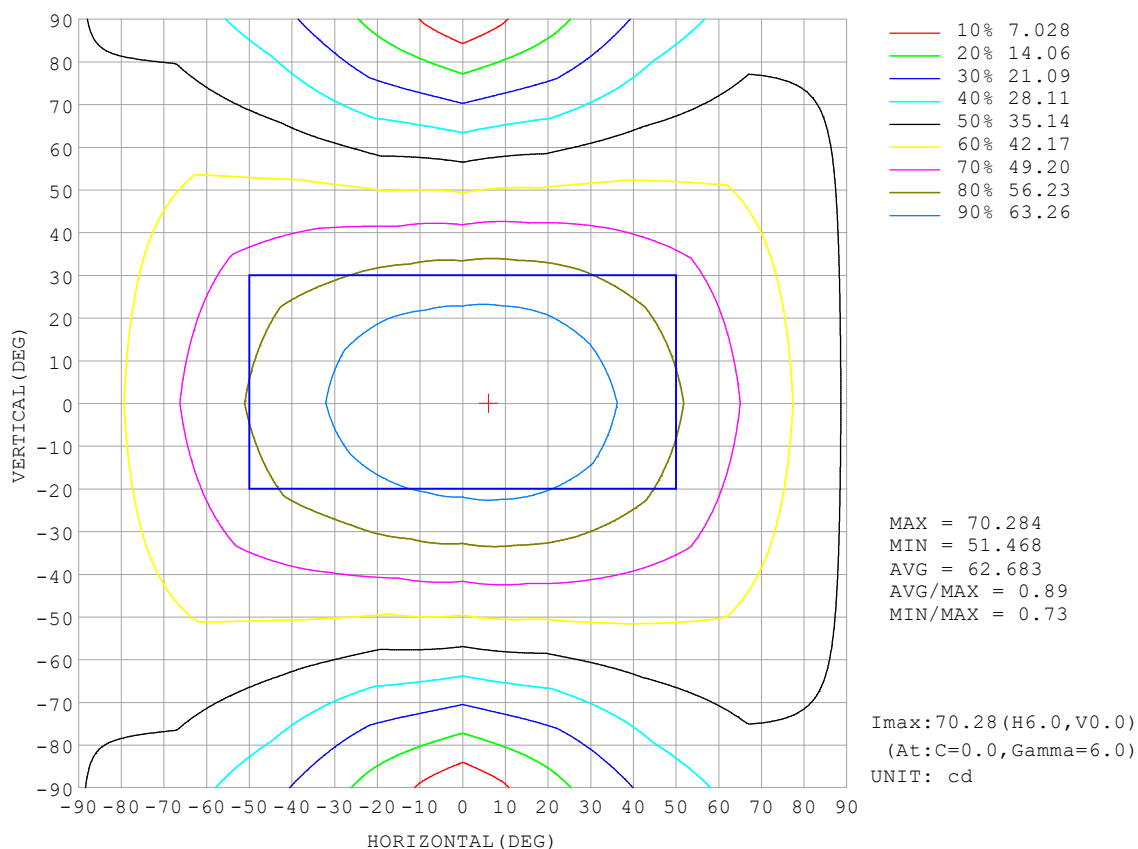
REFLECTANCE										
Ceiling	0.8	0.8	0.8	0.7	0.7	0.7	0.5	0.5	0.5	0
Walls	0.7	0.5	0.3	0.7	0.5	0.3	0.7	0.5	0.3	0
Working plane	0.2	0.2	0.2	0.2	0.2	0.2	0.2	0.2	0.2	0
ROOM INDEX	UTILIZATION FACTORS (PERCENT) $k(RI) \times RCR = 5$									
$k = 0.60$	47	34	27	46	34	27	44	33	26	20
0.80	56	43	35	54	42	34	51	41	33	25
1.00	64	51	42	62	49	41	58	50	40	31
1.25	71	58	49	68	56	48	64	54	46	37
1.50	76	63	54	73	62	53	68	58	51	41
2.00	83	72	63	80	69	62	74	65	59	47
2.50	88	77	69	84	75	67	78	70	64	51
3.00	91	82	74	88	79	72	81	74	68	54
4.00	96	88	81	92	85	79	85	79	74	59
5.00	99	92	86	95	89	83	87	82	78	62
ROOM INDEX	UF (total)									Direct
According to DIN EN 13032-2 2004			Suspended					SHRNOM = 1.25		

C Range: 0 - 360DEG  
 C Interval: 22.5DEG  
 Test Speed: HIGH  
 Temperature: 25.3°C  
 Operators: Cloud  
 Test Date: 2024-10-30

γ Range: 0 - 180DEG  
 γ Interval: 1.0DEG  
 Test System: EVERFINE GO-2000B\_V1 SYSTEM V2.00.488  
 Humidity: 65.0%  
 Test Distance: 6.360m [K=1.0000]  
 Remarks:

## ISOCANDELA DIAGRAM

Test:U:24.00V I:0.4717A P:11.32W PF:1.000 Freq:0Hz Lamp Flux:338.77lx1 lm		
NAME: SF21-24V-5050-60-2200-80	TYPE:	WEIGHT:
SPEC.:	DIM.: Length=1m	SERIAL No.:
MFR.:	SUR.:	Shielding Angle:



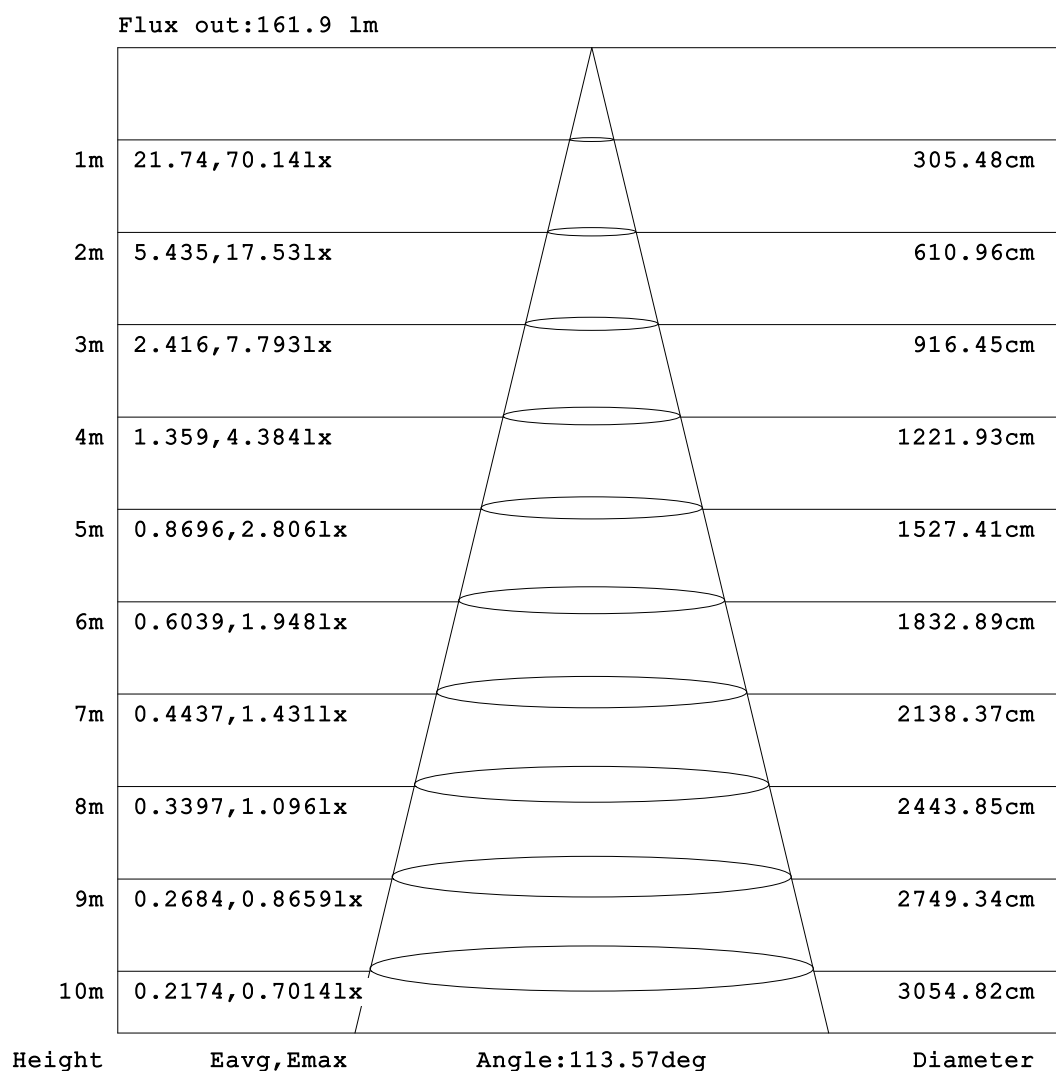
C Range: 0 - 360DEG  
C Interval: 22.5DEG  
Test Speed: HIGH  
Temperature:25.3℃  
Operators:Cloud  
Test Date:2024-10-30

γ Range: 0 - 180DEG  
γ Interval: 1.0DEG  
Test System:EVERFINE GO-2000B\_V1 SYSTEM V2.00.488  
Humidity:65.0%  
Test Distance:6.360m [K=1.0000]  
Remarks:



## AAI Figure

Test:U:24.00V I:0.4717A P:11.32W PF:1.000 Freq:0Hz Lamp Flux:338.77lx1 lm		
NAME: SF21-24V-5050-60-2200-80	TYPE:	WEIGHT:
SPEC.:	DIM.: Length=1m	SERIAL No.:
MFR.:	SUR.:	Shielding Angle:



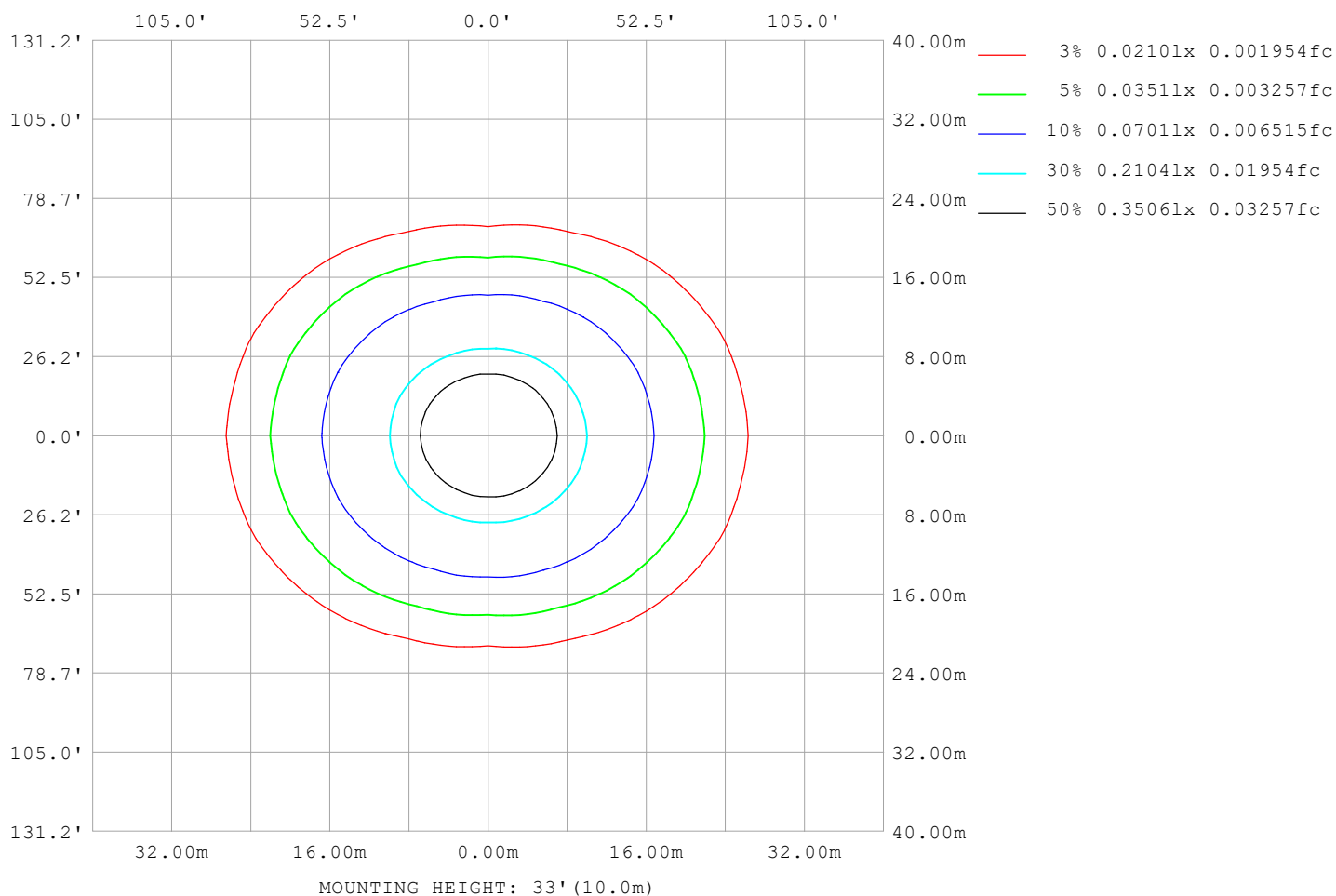
Note: The Curves indicate the illuminated area and the average illumination when the luminaire is at different distance.

C Range: 0 - 360DEG  
C Interval: 22.5DEG  
Test Speed: HIGH  
Temperature: 25.3°C  
Operators: Cloud  
Test Date: 2024-10-30

γ Range: 0 - 180DEG  
γ Interval: 1.0DEG  
Test System: EVERFINE GO-2000B\_V1 SYSTEM V2.00.488  
Humidity: 65.0%  
Test Distance: 6.360m [K=1.0000]  
Remarks:

## ISOLUX DIAGRAM

Test:U:24.00V I:0.4717A P:11.32W PF:1.000 Freq:0Hz Lamp Flux:338.77lx 1m		
NAME: SF21-24V-5050-60-2200-80	TYPE:	WEIGHT:
SPEC.:	DIM.: Length=1m	SERIAL No.:
MFR.:	SUR.:	Shielding Angle:



C Range: 0 - 360DEG  
C Interval: 22.5DEG  
Test Speed: HIGH  
Temperature: 25.3°C  
Operators: Cloud  
Test Date: 2024-10-30

γ Range: 0 - 180DEG  
γ Interval: 1.0DEG  
Test System: EVERFINE GO-2000B\_V1 SYSTEM V2.00.488  
Humidity: 65.0%  
Test Distance: 6.360m [K=1.0000]  
Remarks:

## LED Avg.L Report

Test:U:24.00V I:0.4717A P:11.32W PF:1.000 Freq:0Hz Lamp Flux:338.771x1 lm		
NAME: SF21-24V-5050-60-2200-80	TYPE:	WEIGHT:
SPEC.:	DIM.: Length=1m	SERIAL No.:
MFR.:	SUR.:	Shielding Angle:

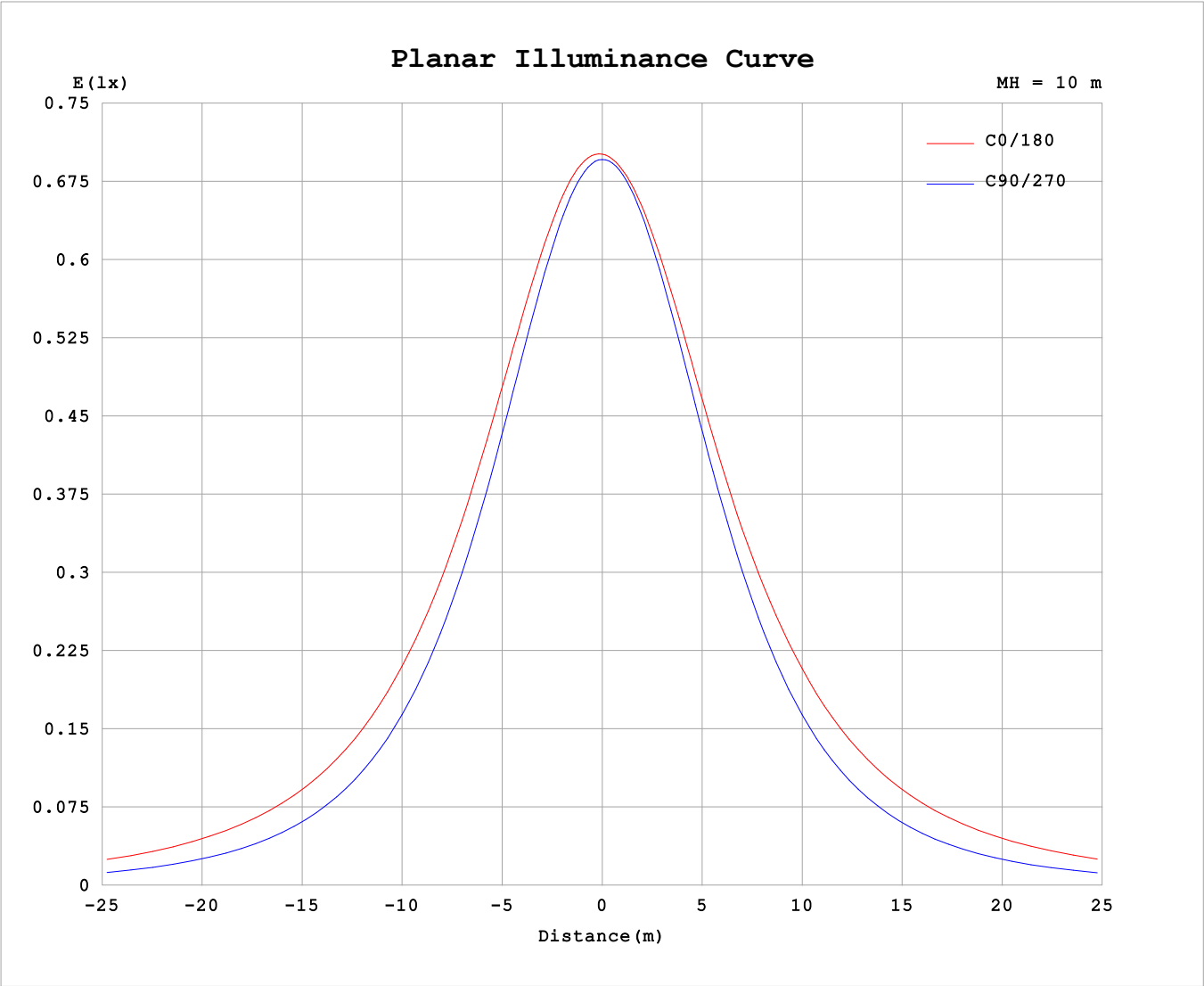
AvgL	cd/m2
L_0~180 (65) av	6855
L_0~180 (75) av	9969
L_0~180 (85) av	25607
L_90~270 (65) av	3720
L_90~270 (75) av	3714
L_90~270 (85) av	4188
L_45 (65) av	5478
L_45 (75) av	7474
L_45 (85) av	18107

Standard: GB/T 29293-2012

C Range: 0 - 360DEG  
C Interval: 22.5DEG  
Test Speed: HIGH  
Temperature:25.3℃  
Operators:Cloud  
Test Date:2024-10-30

γ Range: 0 - 180DEG  
γ Interval: 1.0DEG  
Test System:EVERFINE GO-2000B\_V1 SYSTEM V2.00.488  
Humidity:65.0%  
Test Distance:6.360m [K=1.0000]  
Remarks:

Planar Illuminance Curve



C Range: 0 - 360DEG  
C Interval: 22.5DEG  
Test Speed: HIGH  
Temperature:25.3℃  
Operators:Cloud  
Test Date:2024-10-30

γ Range: 0 - 180DEG  
γ Interval: 1.0DEG  
Test System:EVERFINE GO-2000B\_V1 SYSTEM V2.00.488  
Humidity:65.0%  
Test Distance:6.360m [K=1.0000]  
Remarks:

## LUMINOUS DISTRIBUTION INTENSITY DATA

Test:U:24.00V I:0.4717A P:11.32W PF:1.000 Freq:0Hz Lamp Flux:338.771x1 lm																		
NAME: SF21-24V-5050-60-2200-80									TYPE:					WEIGHT:				
SPEC.:									DIM.: Length=1m					SERIAL No.:				
MFR.:									SUR.:					Shielding Angle:				

Table--1

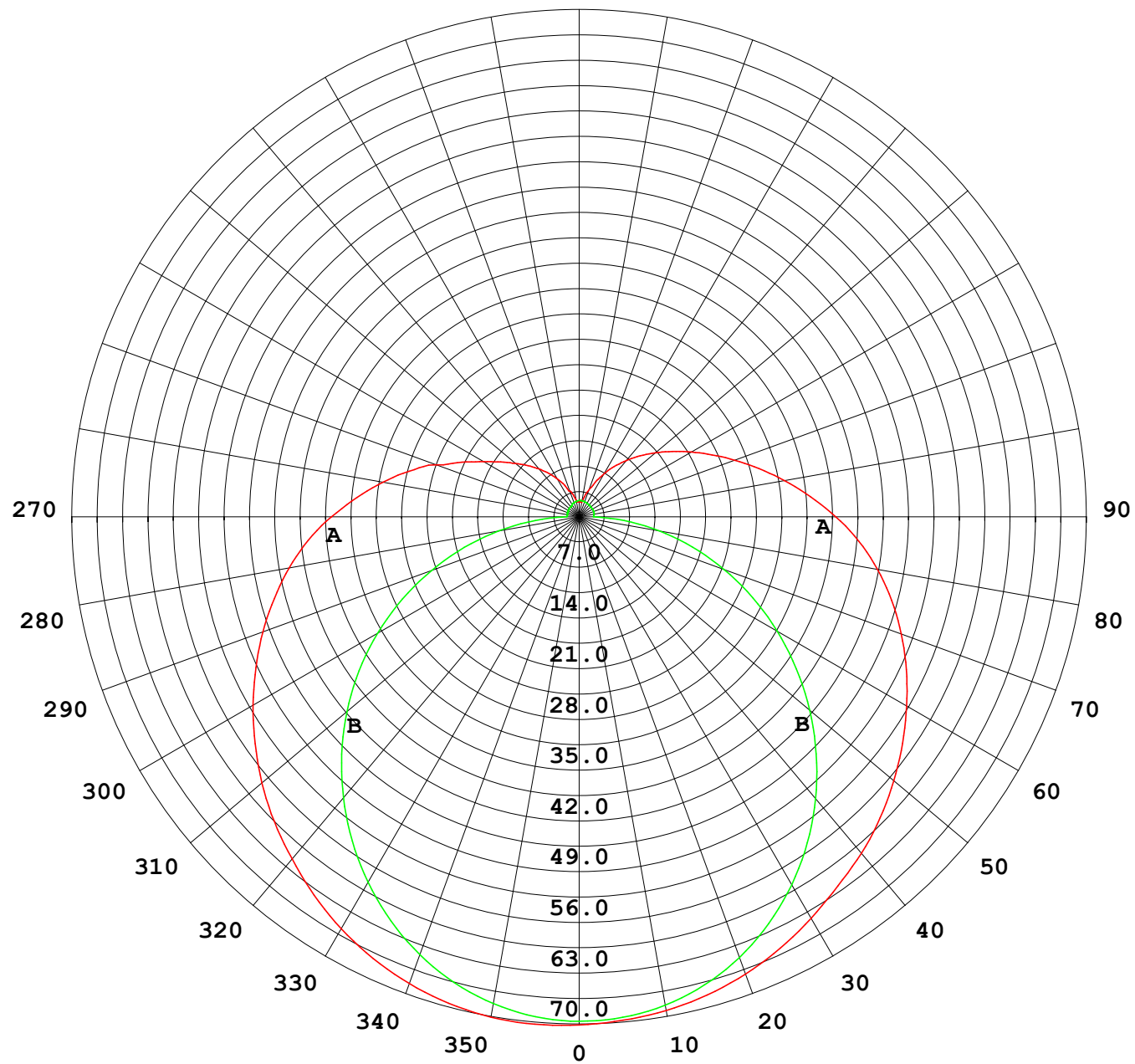
UNIT: cd

C (DEG) γ (DEG)		0	22.5	45	67.5	90	112.5	135	157.5	180	202.5	225	247.5	270	292.5	315	337.5			
0	69.7	69.7	69.7	69.7	69.7	69.7	69.7	69.7	69.7	69.7	69.7	69.7	69.7	69.7	69.7	69.7	69.7			
5	69.9	69.8	69.7	69.5	69.4	69.3	69.3	69.3	69.4	69.3	69.4	69.4	69.4	69.5	69.6	69.7	69.9			
10	69.7	69.6	69.2	68.7	68.3	68.3	68.4	68.7	68.8	68.7	68.6	68.5	68.6	68.9	69.3	69.6				
15	69.1	68.8	68.1	67.3	66.7	66.7	67.2	67.7	67.9	67.8	67.5	67.0	67.0	67.6	68.3	68.9				
20	68.2	67.7	66.6	65.3	64.4	64.6	65.5	66.5	66.8	66.5	65.9	65.0	64.8	65.6	66.9	67.8				
25	66.9	66.2	64.6	62.8	61.6	62.0	63.4	64.9	65.3	64.9	63.8	62.4	62.1	63.2	64.9	66.3				
30	65.3	64.4	62.2	59.9	58.4	58.9	60.9	62.9	63.7	63.1	61.4	59.4	58.8	60.2	62.6	64.5				
35	63.4	62.2	59.4	56.5	54.7	55.5	58.1	60.9	61.9	61.0	58.7	56.0	55.0	56.8	59.8	62.4				
40	61.3	59.8	56.4	52.8	50.7	51.8	55.0	59.0	60.3	59.1	55.7	52.2	50.9	53.0	56.8	60.0				
45	59.2	57.3	53.1	48.8	46.4	47.9	51.9	57.0	58.4	57.1	52.6	48.1	46.4	48.9	53.5	57.5				
50	56.8	54.7	49.6	44.5	41.9	43.7	48.9	54.6	56.4	54.7	49.7	43.8	41.6	44.6	50.0	55.0				
55	54.3	51.9	46.1	40.1	37.2	39.3	45.7	52.0	54.2	52.2	46.4	39.4	36.7	40.1	46.6	52.3				
60	51.7	49.1	42.6	35.6	32.1	34.9	42.2	49.3	51.9	49.6	43.1	35.1	31.6	35.6	43.2	49.6				
65	48.9	46.3	39.2	31.1	27.0	30.7	38.9	46.6	49.5	47.0	39.7	31.0	26.5	31.1	39.7	46.7				
70	46.2	43.3	35.8	26.8	21.7	26.4	35.6	43.9	47.1	44.3	36.5	26.8	21.3	26.8	36.3	43.9				
75	43.3	40.4	32.6	22.7	16.4	22.3	32.5	41.1	44.4	41.6	33.4	22.8	16.2	22.7	33.0	41.1				
80	40.4	37.5	29.5	18.9	11.2	18.5	29.4	38.2	41.6	38.7	30.4	19.2	11.2	18.9	30.0	38.2				
85	37.3	34.5	26.6	15.6	6.13	15.2	26.4	35.1	38.5	35.6	27.3	16.0	6.29	15.6	27.0	35.2				
90	34.0	31.3	23.5	12.7	1.77	12.3	23.3	31.8	35.2	32.3	24.2	13.1	2.01	12.7	24.0	32.0				
95	30.6	28.1	20.6	10.3	1.66	10.01	20.5	28.6	31.9	29.1	21.3	10.8	2.04	10.4	21.2	28.8				
100	27.4	25.0	18.1	7.37	1.65	8.40	17.9	25.5	28.6	26.0	18.7	9.17	2.12	7.16	17.4	24.3				
105	24.2	21.9	14.6	5.86	1.72	7.31	15.7	22.7	25.6	23.1	16.5	8.04	2.17	5.32	14.8	21.8				
110	20.9	18.2	12.1	5.45	1.73	6.48	13.9	20.1	22.8	20.4	14.5	7.17	2.16	4.93	11.8	18.4				
115	17.8	15.7	10.3	4.97	1.75	5.71	12.3	17.7	20.1	18.1	12.8	6.37	2.16	4.93	10.5	15.2				
120	15.1	13.6	8.78	4.44	1.76	5.03	10.9	15.6	17.8	15.9	11.4	5.61	2.15	4.57	8.94	13.5				
125	13.1	11.8	7.73	3.90	1.78	4.25	9.57	13.7	15.6	14.0	10.0	4.79	2.14	4.23	7.90	11.6				
130	11.4	10.5	6.49	3.47	1.80	3.65	8.33	12.0	13.7	12.2	8.73	4.10	2.14	3.84	6.53	10.2				
135	9.95	9.11	5.69	3.16	1.82	3.13	7.16	10.3	11.9	10.6	7.50	3.52	2.14	3.42	5.97	9.09				
140	8.59	7.44	4.95	2.90	1.84	2.73	5.97	8.75	10.1	8.97	6.30	3.04	2.15	3.08	5.31	7.99				
145	7.27	5.76	4.29	2.63	1.87	2.29	4.87	7.27	8.44	7.48	5.13	2.55	2.18	2.80	4.55	6.56				
150	6.02	4.72	3.65	2.33	2.01	2.11	3.96	5.73	6.79	5.93	4.18	2.30	2.19	2.56	3.86	5.28				
155	4.84	3.95	3.08	2.37	2.05	2.11	3.21	4.50	5.25	4.68	3.36	2.21	2.22	2.44	3.26	4.28				
160	3.79	3.16	2.86	2.27	2.10	2.15	2.51	3.45	3.85	3.60	2.58	2.21	2.25	2.38	2.80	3.42				
165	3.11	2.50	2.52	2.23	2.14	2.20	2.26	2.54	2.89	2.62	2.25	2.22	2.27	2.33	2.54	2.77				
170	2.19	2.21	2.34	2.23	2.19	2.24	2.26	2.30	2.04	2.26	2.27	2.25	2.27	2.32	2.38	2.49				
175	2.07	2.29	2.28	2.26	2.23	2.28	2.29	2.33	2.06	2.26	2.28	2.26	2.27	2.31	2.32	2.37				
180	2.07	2.29	2.27	2.28	2.26	2.29	2.32	2.34	2.07	2.28	2.29	2.27	2.27	2.30	2.32	2.36				

C Range: 0 - 360DEG  
C Interval: 22.5DEG  
Test Speed: HIGH  
Temperature:25.3℃  
Operators:Cloud  
Test Date:2024-10-30

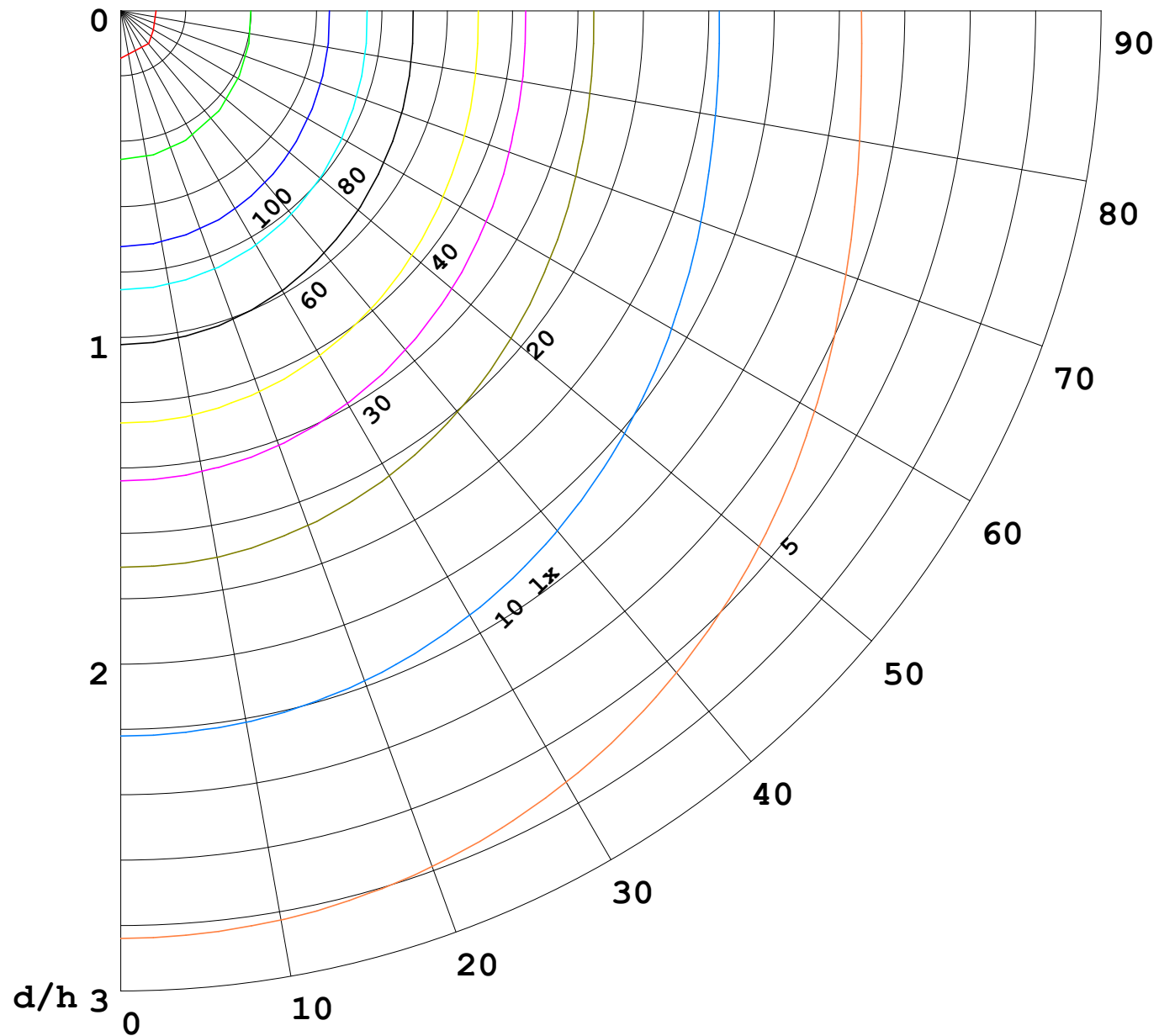
γ Range: 0 - 180DEG  
γ Interval: 1.0DEG  
Test System:EVERFINE GO-2000B\_V1 SYSTEM V2.00.488  
Humidity:65.0%  
Test Distance:6.360m [K=1.0000]  
Remarks:

I (cd)



1000 lm

$\kappa = 1$



F = 1000 lm  
 K = 0.7  
 Hcc = 0.8 m  
 Hfc = 0.0 m  
 Eave = 100 lx

	Pcc	Pw	Pfc
—————	70	50	30
—————	50	30	20

