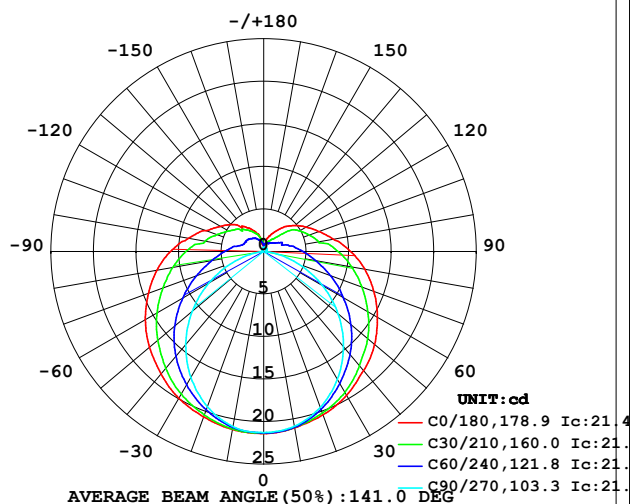


LUMINAIRE PHOTOMETRIC TEST REPORT

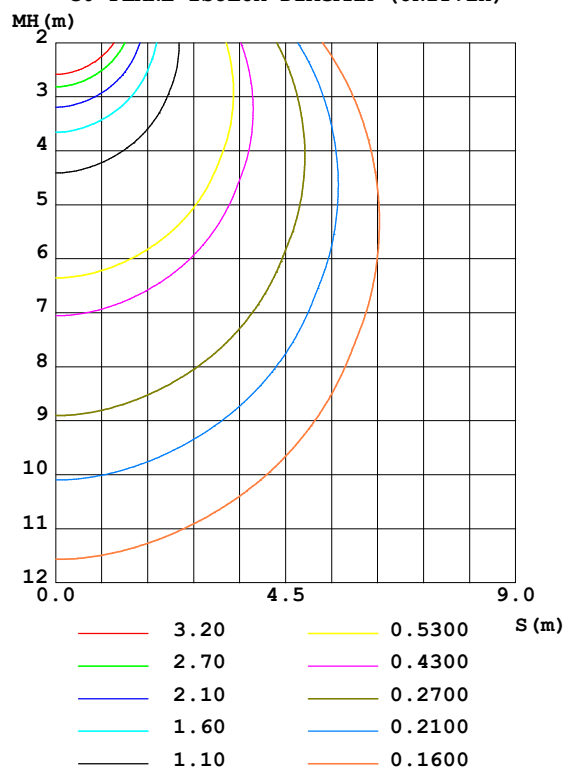
Test:U:12.00V I:0.3927A P:4.712W PF:1.000 Freq:50.00Hz Lamp Flux:101.708x1 lm		
NAME: SF21-12V-3528-72-3500-80	TYPE: 硅胶	WEIGHT:
SPEC.:	DIM.: 28mm*11.5mm	SERIAL No.:2021120602
MFR.: OLYMPIA	SUR.:1*0.016	Shielding Angle:

DATA OF LAMP		PHOTOMETRIC DATA Eff: 21.58 lm/W			
MODEL	3528	I _{max} (cd)	21.40	S/MH(C0/180)	1.40
NOMINAL POWER(W)	5	LOR(%)	100.0	S/MH(C90/270)	1.20
RATED VOLTAGE(V)	12	TOTAL FLUX(lm)	101.71	η UP,DN(C0-180)	10.4,39.2
NOMINAL FLUX(lm)	101.708	CIE CLASS	SEMI-D.	η UP,DN(C180-360)	10.8,39.6
LAMPS INSIDE	1	η up(%)	21.2	CIBSE SHR NOM	1.50
TEST VOLTAGE(V)	12	η down(%)	78.8	CIBSE SHR MAX	1.55

LUMINOUS INTENSITY DISTRIBUTION DIAGRAM



C0 PLANE ISOLUX DIAGRAM (UNIT: lx)



C Range: 0 - 360DEG
C Interval: 30.0DEG
Test Speed: HIGH
Temperature: 25.3DEG
Operators: LPC
Test Date: 2021-12-06

γ Range: 0 - 180DEG
γ Interval: 1.0DEG
Test System: EVERFINE GO-2000B_V1 SYSTEM V2.0.362
Humidity: 65.0%
Test Distance: 9.200m [K=1.0000]
Remarks:

ZONAL FLUX DIAGRAM

ZONAL FLUX DIAGRAM:

γ	C0	C45	C90	C135	C180	C225	C270	C315	γ	Φ zone	Φ total	%lum, lamp
10	21.05	20.99	20.88	20.92	21.24	21.09	20.90	20.96	0- 10	2.020	2.020	1.99,1.99
20	20.43	19.98	19.49	19.95	20.69	20.12	19.41	19.88	10- 20	5.807	7.828	7.7,7.7
30	19.53	18.51	17.35	18.57	19.94	18.73	17.11	18.43	20- 30	8.911	16.74	16.5,16.5
40	18.28	16.67	14.60	16.78	18.79	17.00	14.27	16.71	30- 40	11.06	27.80	27.3,27.3
50	17.03	14.68	11.43	14.74	17.52	14.95	10.98	14.76	40- 50	12.10	39.90	39.2,39.2
60	15.44	12.47	7.942	12.54	16.07	12.74	7.431	12.60	50- 60	12.06	51.96	51.1,51.1
70	13.79	10.33	4.420	10.35	14.42	10.53	3.908	10.47	60- 70	11.04	63.00	61.9,61.9
80	12.06	8.361	1.355	8.361	12.74	8.526	0.9667	8.493	70- 80	9.410	72.41	71.2,71.2
90	10.22	6.697	0.2981	6.732	10.97	6.868	0.2027	6.822	80- 90	7.687	80.10	78.8,78.8
100	8.344	5.064	0.3255	5.097	8.984	5.263	0.2102	5.028	90-100	6.161	86.26	84.8,84.8
110	6.917	3.981	0.3522	3.978	7.210	4.187	0.2180	4.285	100-110	4.647	90.90	89.4,89.4
120	5.786	3.485	0.3770	3.499	5.929	3.631	0.2412	3.626	110-120	3.653	94.56	93,93
130	4.761	2.680	0.4071	3.103	4.944	3.189	0.2973	2.867	120-130	2.812	97.37	95.7,95.7
140	3.786	1.711	0.4323	2.631	3.894	2.694	0.3466	2.043	130-140	1.941	99.31	97.6,97.6
150	2.695	1.301	0.4600	2.164	3.080	2.224	0.3869	1.573	140-150	1.252	100.6	98.9,98.9
160	1.925	1.084	0.4665	1.673	2.246	1.774	0.4221	1.211	150-160	0.7295	101.3	99.6,99.6
170	0.8295	0.8971	0.4729	1.188	0.8789	1.266	0.4514	1.015	160-170	0.3377	101.6	99.9,99.9
180	0.5026	0.4900	0.4774	0.4975	0.5026	0.5001	0.4573	0.4850	170-180	0.0785	101.7	100,100
DEG	LUMINOUS INTENSITY:cd									UNIT:lm		

Conical surface Flux(90deg): 33.783 lm

%lum = 33.2%

%lamp = 33.2%

Conical surface Flux(120deg): 51.955 lm

%lum = 51.1%

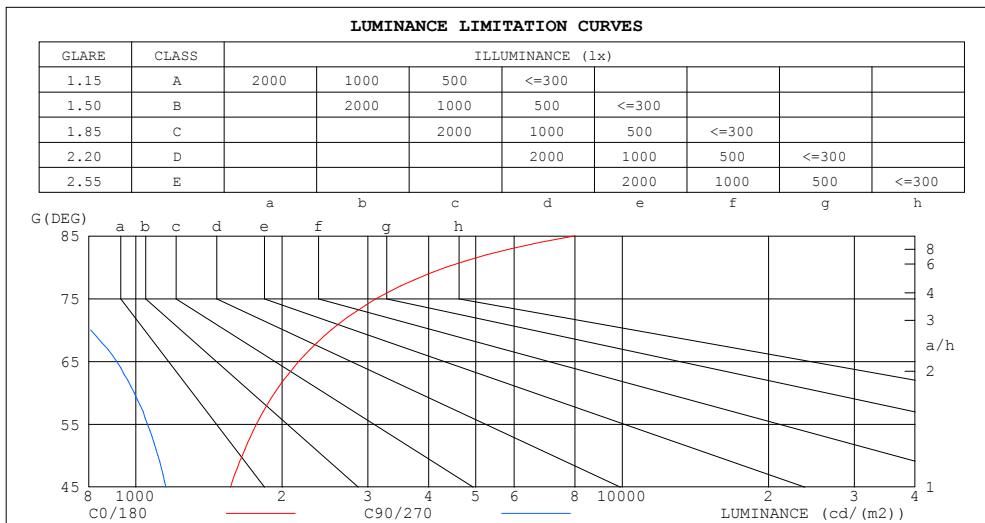
%lamp = 51.1%

C Range: 0 - 360DEG
 C Interval: 30.0DEG
 Test Speed: HIGH
 Temperature:25.3DEG
 Operators:LPC
 Test Date:2021-12-06

γ Range: 0 - 180DEG
 γ Interval: 1.0DEG
 Test System:EVERFINE GO-2000B_V1 SYSTEM V2.0.362
 Humidity:65.0%
 Test Distance:9.200m [K=1.0000]
 Remarks:

LUMINANCE LIMITATION CURVES

Test:U:12.00V I:0.3927A P:4.712W PF:1.000 Freq:50.00Hz Lamp Flux:101.708x1 lm		
NAME: SF21-12V-3528-72-3500-80	TYPE: 硅胶	WEIGHT:
SPEC.:	DIM.: 28mm*11.5mm	SERIAL No.:2021120602
MFR.: OLYMPIA	SUR.:1*0.016	Shielding Angle:



LUMINANCE cd/(m2)		
G (DEG)	C0/180	C90/270
85	8003	234
80	4342	488
75	3123	669
70	2520	808
65	2164	914
60	1930	993
55	1770	1057
50	1656	1111
45	1566	1154

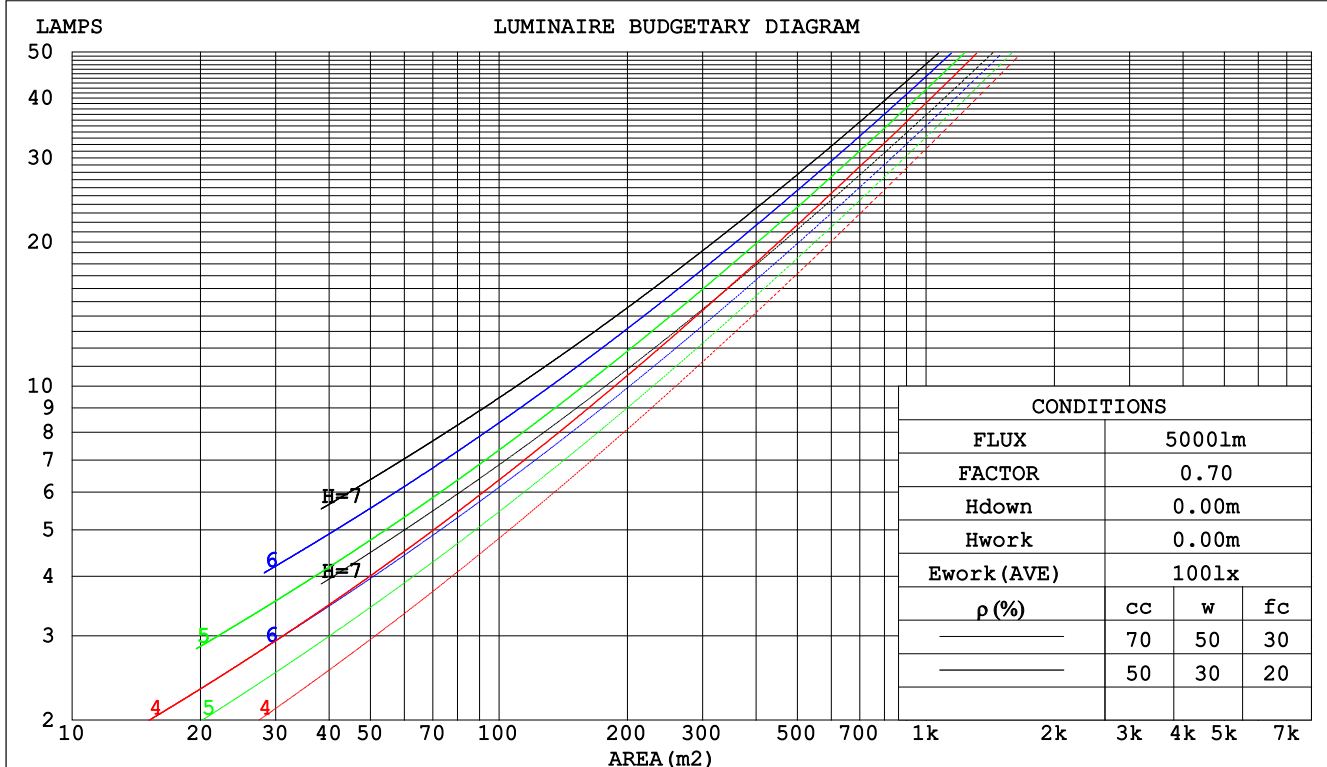
C Range: 0 - 360DEG
C Interval: 30.0DEG
Test Speed: HIGH
Temperature:25.3DEG
Operators:LPC
Test Date:2021-12-06

γ Range: 0 - 180DEG
 γ Interval: 1.0DEG
Test System:EVERFINE GO-2000B_V1 SYSTEM V2.0.362
Humidity:65.0%
Test Distance:9.200m [K=1.0000]
Remarks:

CU AND LUMINAIRE BUDGETARY ESTIMATE DIAGRAM

Test:U:12.00V I:0.3927A P:4.712W PF:1.000 Freq:50.00Hz Lamp Flux:101.708x1 lm		
NAME: SF21-12V-3528-72-3500-80	TYPE: 硅胶	WEIGHT:
SPEC.:	DIM.: 28mm*11.5mm	SERIAL No.:2021120602
MFR.: OLYMPIA	SUR.:1*0.016	Shielding Angle:

pcc	80%			70%			50%			30%			10%			0
pw	50%	30%	10%	50%	30%	10%	50%	30%	10%	50%	30%	10%	50%	30%	10%	0
pfc	20%			20%			20%			20%			20%			0
RCR	RCR:Room Cavity Ratio						Coefficients of Utilization(CU)									
0.0	1.14	1.14	1.14	1.09	1.09	1.09	.99	.99	.99	.91	.91	.91	.83	.83	.83	.79
1.0	.95	.90	.85	.90	.86	.81	.82	.78	.75	.75	.72	.69	.68	.65	.63	.59
2.0	.81	.73	.67	.77	.70	.64	.70	.65	.60	.64	.59	.55	.58	.54	.51	.47
3.0	.70	.61	.54	.67	.59	.52	.61	.54	.49	.55	.50	.45	.50	.46	.42	.39
4.0	.62	.52	.45	.59	.50	.44	.54	.47	.41	.49	.43	.38	.44	.39	.35	.32
5.0	.55	.45	.38	.52	.44	.37	.48	.40	.35	.44	.37	.33	.40	.34	.30	.28
6.0	.49	.40	.33	.47	.38	.32	.43	.36	.30	.39	.33	.28	.36	.31	.26	.24
7.0	.44	.35	.29	.42	.34	.28	.39	.32	.26	.36	.29	.25	.33	.27	.23	.21
8.0	.40	.32	.26	.39	.30	.25	.36	.28	.23	.33	.27	.22	.30	.25	.21	.18
9.0	.37	.28	.23	.35	.28	.22	.33	.26	.21	.30	.24	.20	.28	.22	.19	.16
10.0	.34	.26	.20	.33	.25	.20	.30	.23	.19	.28	.22	.18	.26	.20	.17	.15



C Range: 0 - 360DEG
 C Interval: 30.0DEG
 Test Speed: HIGH
 Temperature:25.3DEG
 Operators:LPC
 Test Date:2021-12-06

γ Range: 0 - 180DEG
 γ Interval: 1.0DEG
 Test System:EVERFINE GO-2000B_V1 SYSTEM V2.0.362
 Humidity:65.0%
 Test Distance:9.200m [K=1.0000]
 Remarks:

WEC AND CCEC

Test:U:12.00V I:0.3927A P:4.712W PF:1.000 Freq:50.00Hz Lamp Flux:101.708x1 lm		
NAME: SF21-12V-3528-72-3500-80	TYPE: 硅胶	WEIGHT:
SPEC.:	DIM.: 28mm*11.5mm	SERIAL No.:2021120602
MFR.: OLYMPIA	SUR.:1*0.016	Shielding Angle:

pcc	80%			70%			50%			30%			10%			0	
pw	50%	30%	10%	50%	30%	10%	50%	30%	10%	50%	30%	10%	50%	30%	10%	0	
pfc	20%			20%			20%			20%			20%			0	
RCR	RCR:Room Cavity Ratio						Wall Exitance Coefficients(WEC)										
0.0																	
1.0	.384	.219	.069	.371	.211	.067	.345	.198	.063	.322	.185	.060	.300	.174	.056		
2.0	.332	.182	.056	.319	.176	.054	.296	.165	.051	.275	.154	.048	.255	.144	.045		
3.0	.294	.157	.047	.283	.152	.046	.262	.142	.043	.243	.133	.041	.225	.124	.039		
4.0	.265	.138	.040	.255	.133	.039	.236	.125	.037	.218	.117	.035	.201	.109	.033		
5.0	.241	.123	.036	.232	.119	.035	.214	.112	.033	.198	.104	.031	.183	.098	.029		
6.0	.221	.111	.032	.212	.107	.031	.196	.101	.029	.181	.094	.028	.168	.088	.026		
7.0	.203	.101	.029	.196	.098	.028	.181	.092	.026	.168	.086	.025	.155	.080	.024		
8.0	.189	.092	.026	.182	.089	.025	.168	.084	.024	.156	.079	.023	.144	.074	.022		
9.0	.176	.085	.024	.169	.083	.023	.157	.078	.022	.145	.073	.021	.134	.068	.020		
10.0	.165	.079	.022	.159	.077	.021	.147	.072	.020	.136	.068	.019	.126	.063	.018		

pcc	80%			70%			50%			30%			10%			0
pw	50%	30%	10%	50%	30%	10%	50%	30%	10%	50%	30%	10%	50%	30%	10%	0
pfc	20%			20%			20%			20%			20%			0
RCR	RCR:Room Cavity Ratio						Ceiling Cavity Exitance Coefficients(CCEC)									
0.0	.352	.352	.352	.301	.301	.301	.206	.206	.206	.118	.118	.118	.038	.038	.038	
1.0	.349	.319	.292	.298	.274	.251	.204	.188	.174	.117	.109	.101	.038	.035	.033	
2.0	.342	.296	.257	.293	.255	.223	.201	.176	.155	.116	.103	.091	.037	.033	.030	
3.0	.334	.280	.236	.287	.241	.205	.197	.168	.144	.114	.098	.085	.037	.032	.028	
4.0	.327	.267	.222	.280	.231	.193	.193	.161	.136	.112	.094	.080	.036	.031	.026	
5.0	.319	.258	.212	.274	.223	.185	.189	.156	.130	.109	.091	.077	.035	.030	.025	
6.0	.312	.250	.205	.268	.216	.179	.185	.151	.126	.107	.089	.075	.035	.029	.025	
7.0	.305	.243	.200	.262	.211	.174	.181	.148	.123	.105	.087	.074	.034	.028	.024	
8.0	.298	.238	.196	.256	.206	.171	.177	.145	.121	.103	.085	.072	.033	.028	.024	
9.0	.292	.233	.193	.251	.202	.168	.174	.142	.120	.101	.084	.071	.033	.028	.024	
10.0	.286	.229	.191	.246	.199	.166	.171	.140	.118	.100	.083	.071	.032	.027	.023	

C Range: 0 - 360DEG
 C Interval: 30.0DEG
 Test Speed: HIGH
 Temperature:25.3DEG
 Operators:LPC
 Test Date:2021-12-06

γ Range: 0 - 180DEG
 γ Interval: 1.0DEG
 Test System:EVERFINE GO-2000B_V1 SYSTEM V2.0.362
 Humidity:65.0%
 Test Distance:9.200m [K=1.0000]
 Remarks:

UGR(Unified Glare Rating) Table

Test:U:12.00V I:0.3927A P:4.712W PF:1.000 Freq:50.00Hz Lamp Flux:101.708x1 lm											
NAME: SF21-12V-3528-72-3500-80						TYPE:硅胶			WEIGHT:		
SPEC.:						DIM.: 28mm*11.5mm			SERIAL No.:2021120602		
MFR.: OLYMPIA						SUR.:1*0.016			Shielding Angle:		
ceiling/cavity	0.7	0.7	0.5	0.5	0.3	0.7	0.7	0.5	0.5	0.3	
walls	0.5	0.3	0.5	0.3	0.3	0.5	0.3	0.5	0.3	0.3	
working plane	0.2	0.2	0.2	0.2	0.2	0.2	0.2	0.2	0.2	0.2	
Room dimensions		Viewed crosswise					Viewed endwise				
x = 2H y = 2H	21.9	23.2	22.4	23.8	24.4	19.4	20.8	20.0	21.3	22.0	
	3H	24.6	25.8	25.2	26.4	27.1	20.8	22.1	21.4	22.7	23.3
	4H	26.1	27.3	26.7	27.9	28.6	21.4	22.5	22.0	23.1	23.8
	6H	27.8	28.9	28.5	29.6	30.3	21.7	22.8	22.3	23.4	24.1
	8H	28.8	29.8	29.4	30.5	31.2	21.7	22.8	22.4	23.4	24.1
	12H	29.9	30.9	30.5	31.5	32.3	21.7	22.7	22.4	23.4	24.1
4H	2H	22.4	23.6	23.0	24.2	24.9	20.7	21.9	21.3	22.5	23.1
	3H	25.4	26.4	26.1	27.1	27.8	22.4	23.4	23.0	24.1	24.8
	4H	27.1	28.1	27.8	28.7	29.5	23.2	24.1	23.8	24.8	25.5
	6H	29.1	29.9	29.7	30.6	31.4	23.7	24.6	24.4	25.3	26.1
	8H	30.1	30.9	30.8	31.6	32.4	23.9	24.7	24.6	25.4	26.2
	12H	31.3	32.1	32.1	32.8	33.6	24.0	24.7	24.7	25.4	26.3
8H	4H	27.5	28.3	28.2	29.0	29.8	24.4	25.2	25.1	25.9	26.7
	6H	29.7	30.4	30.4	31.1	32.0	25.4	26.1	26.1	26.8	27.7
	8H	31.0	31.6	31.7	32.3	33.2	25.9	26.5	26.6	27.2	28.1
	12H	32.5	33.0	33.2	33.8	34.7	26.2	26.7	27.0	27.5	28.4
12H	4H	27.5	28.2	28.2	28.9	29.8	24.8	25.5	25.5	26.2	27.1
	6H	29.8	30.4	30.6	31.2	32.0	26.1	26.7	26.8	27.4	28.3
	8H	31.2	31.8	32.0	32.5	33.4	26.7	27.3	27.5	28.0	28.9
Variations with the observer position at spacings:											
S = 1.0H	+ 0.1 / - 0.1					+ 0.1 / - 0.1					
1.5H	+ 0.2 / - 0.3					+ 0.2 / - 0.3					
2.0H	+ 0.2 / - 0.3					+ 0.3 / - 0.4					

CIE Pub.117, 101.7 lm Total Lamp Luminous Flux Correct (8log(F/F0) = -7.9)

C Range: 0 - 360DEG
C Interval: 30.0DEG
Test Speed: HIGH
Temperature:25.3DEG
Operators:LPC
Test Date:2021-12-06

γ Range: 0 - 180DEG
γ Interval: 1.0DEG
Test System:EVERFINE GO-2000B_V1 SYSTEM V2.0.362
Humidity:65.0%
Test Distance:9.200m [K=1.0000]
Remarks:

UTILIZATION FACTORS TABLE

Test:U:12.00V I:0.3927A P:4.712W PF:1.000 Freq:50.00Hz Lamp Flux:101.708x1 lm		
NAME: SF21-12V-3528-72-3500-80	TYPE: 硅胶	WEIGHT:
SPEC.:	DIM.: 28mm*11.5mm	SERIAL No.:2021120602
MFR.: OLYMPIA	SUR.:1*0.016	Shielding Angle:

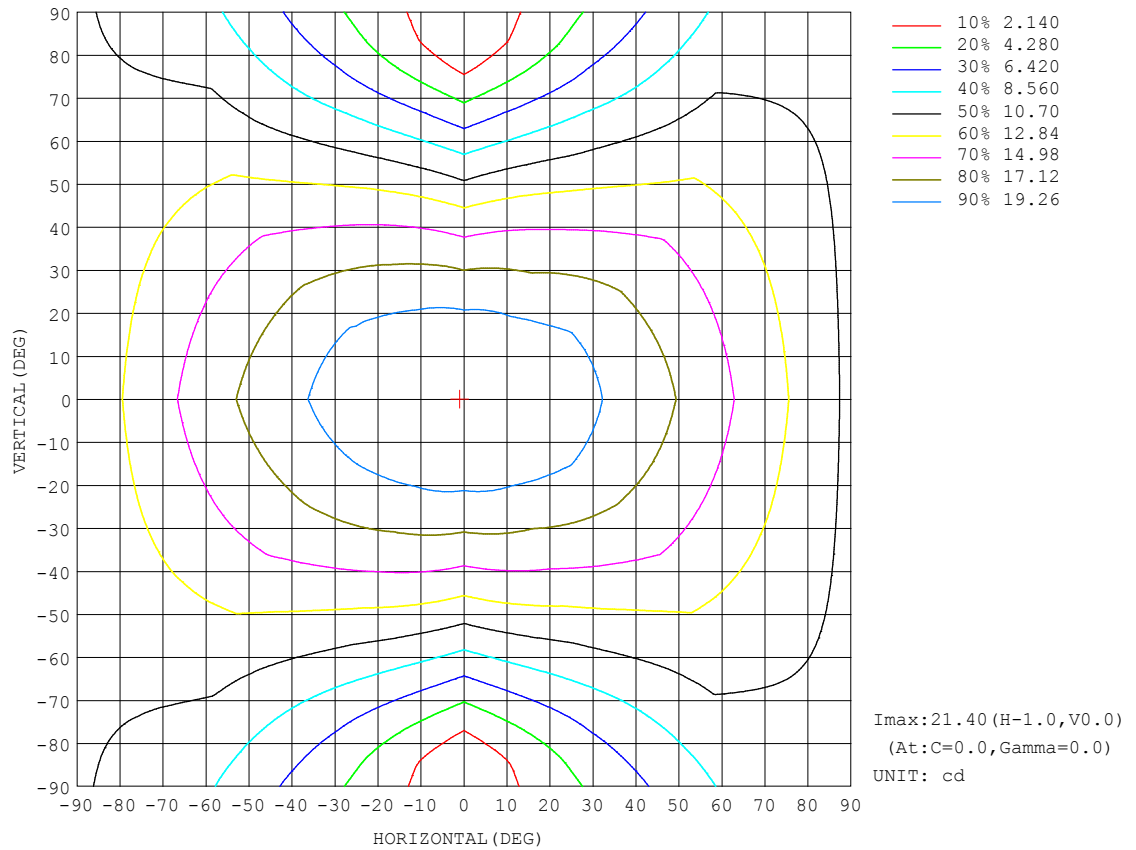
REFLECTANCE										
Ceiling	0.8	0.8	0.8	0.7	0.7	0.7	0.5	0.5	0.5	0
Walls	0.7	0.5	0.3	0.7	0.5	0.3	0.7	0.5	0.3	0
Working plane	0.2	0.2	0.2	0.2	0.2	0.2	0.2	0.2	0.2	0
ROOM INDEX	UTILIZATION FACTORS (PERCENT) $k(RI) \times RCR = 5$									
$k = 0.60$	47	35	27	46	34	27	44	33	26	20
0.80	56	43	35	54	42	35	51	41	34	26
1.00	64	51	42	62	50	42	58	50	40	31
1.25	71	58	49	68	56	48	63	54	46	36
1.50	76	63	55	73	62	54	68	58	51	40
2.00	83	72	63	80	69	62	73	65	59	46
2.50	87	77	69	84	75	67	77	70	63	50
3.00	91	82	74	87	79	72	80	73	68	54
4.00	96	88	81	92	85	79	84	78	73	58
5.00	99	92	86	95	88	83	86	82	77	61
ROOM INDEX	UF (total)									Direct
According to DIN EN 13032-2 2004			Suspended					SHRNOM = 1.25		

C Range: 0 - 360DEG
 C Interval: 30.0DEG
 Test Speed: HIGH
 Temperature: 25.3DEG
 Operators: LPC
 Test Date: 2021-12-06

γ Range: 0 - 180DEG
 γ Interval: 1.0DEG
 Test System: EVERFINE GO-2000B_V1 SYSTEM V2.0.362
 Humidity: 65.0%
 Test Distance: 9.200m [K=1.0000]
 Remarks:

ISOCANDELA DIAGRAM

Test:U:12.00V I:0.3927A P:4.712W PF:1.000 Freq:50.00Hz Lamp Flux:101.708x1 lm		
NAME: SF21-12V-3528-72-3500-80	TYPE: 硅胶	WEIGHT:
SPEC.:	DIM.: 28mm*11.5mm	SERIAL No.:2021120602
MFR.: OLYMPIA	SUR.:1*0.016	Shielding Angle:

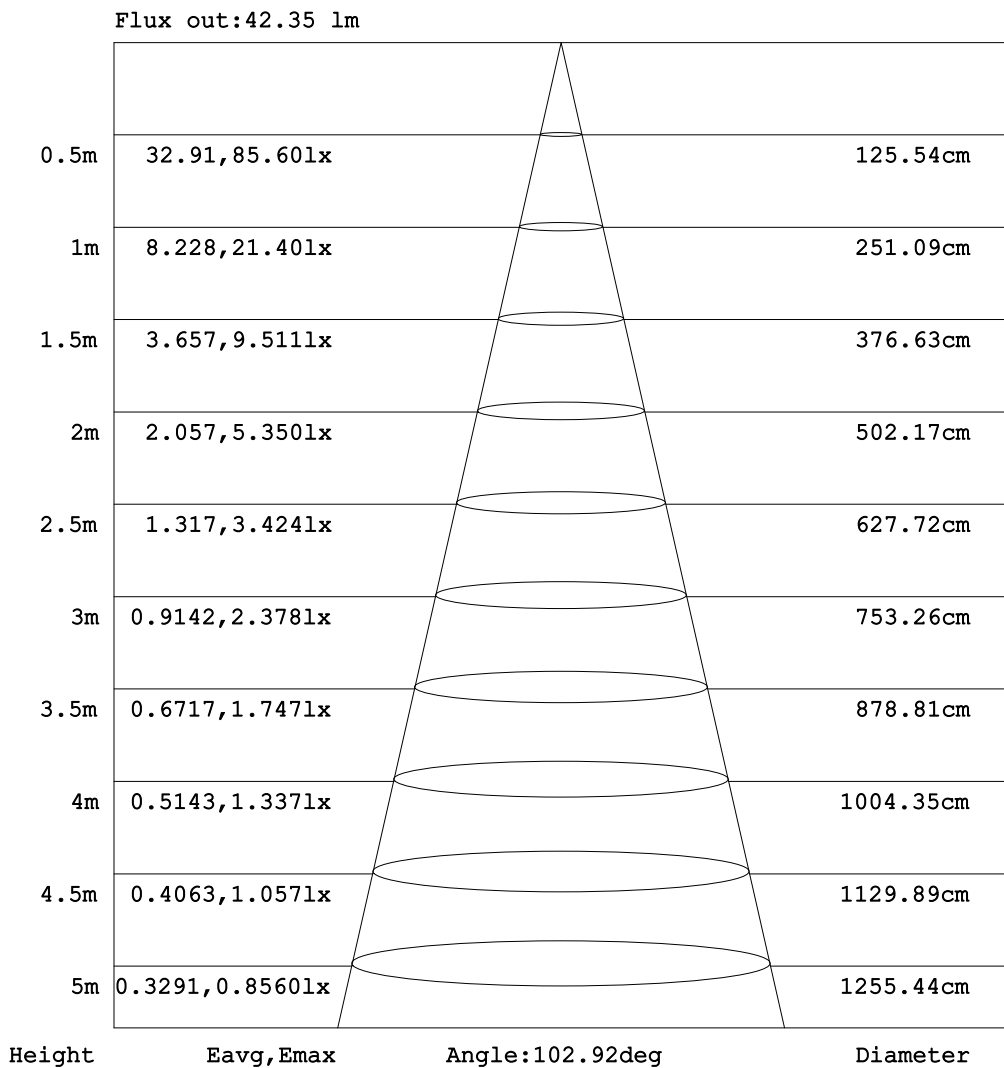


C Range: 0 - 360DEG
C Interval: 30.0DEG
Test Speed: HIGH
Temperature:25.3DEG
Operators:LPC
Test Date:2021-12-06

γ Range: 0 - 180DEG
 γ Interval: 1.0DEG
Test System:EVERFINE GO-2000B_V1 SYSTEM V2.0.362
Humidity:65.0%
Test Distance:9.200m [K=1.0000]
Remarks:

AAI Figure

Test:U:12.00V I:0.3927A P:4.712W PF:1.000 Freq:50.00Hz Lamp Flux:101.708x1 lm		
NAME: SF21-12V-3528-72-3500-80	TYPE: 硅胶	WEIGHT:
SPEC.:	DIM.: 28mm*11.5mm	SERIAL No.:2021120602
MFR.: OLYMPIA	SUR.:1*0.016	Shielding Angle:



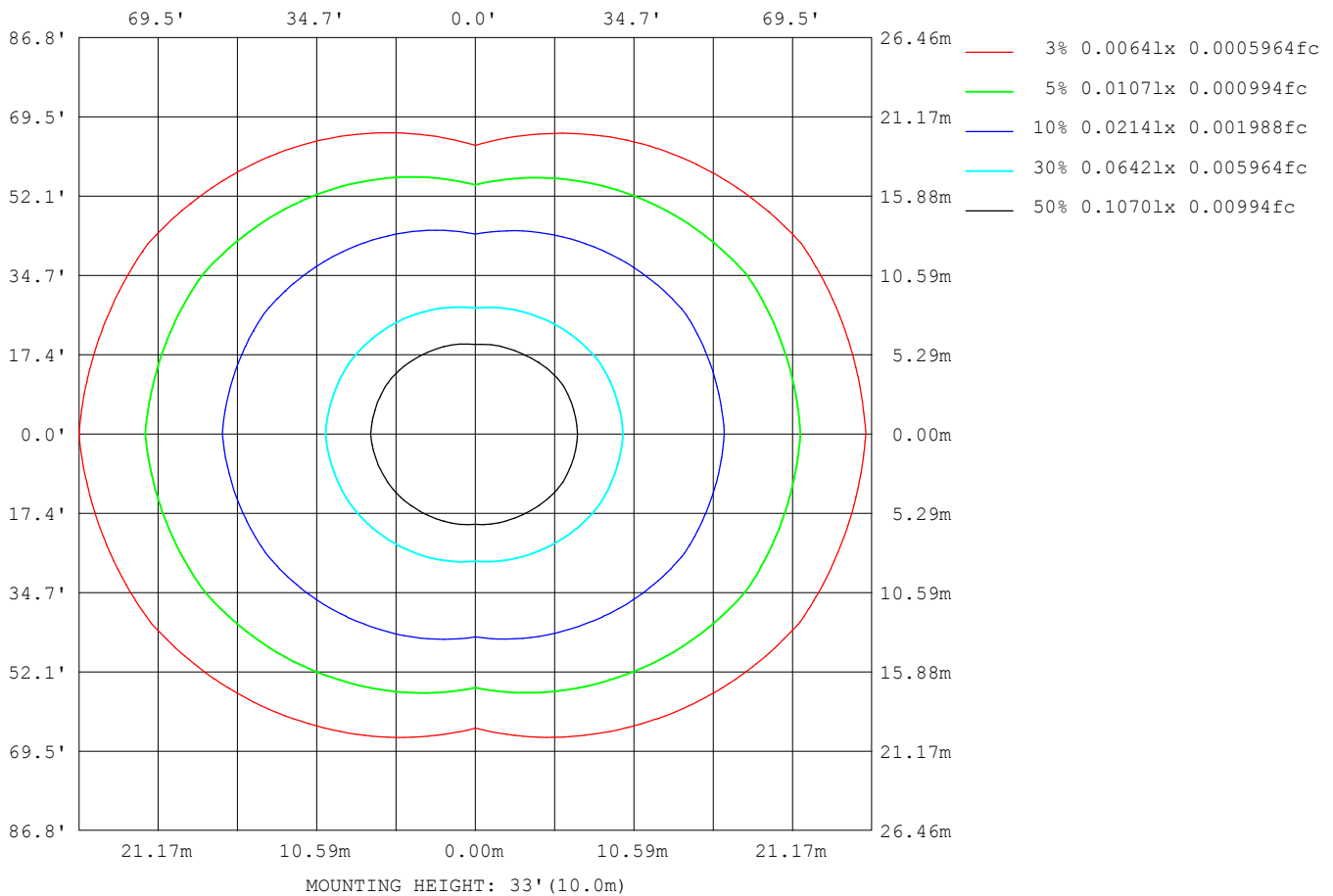
Note: The Curves indicate the illuminated area and the average illumination when the luminaire is at different distance.

C Range: 0 - 360DEG
 C Interval: 30.0DEG
 Test Speed: HIGH
 Temperature: 25.3DEG
 Operators: LPC
 Test Date: 2021-12-06

γ Range: 0 - 180DEG
 γ Interval: 1.0DEG
 Test System: EVERFINE GO-2000B_V1 SYSTEM V2.0.362
 Humidity: 65.0%
 Test Distance: 9.200m [K=1.0000]
 Remarks:

ISOLUX DIAGRAM

Test:U:12.00V I:0.3927A P:4.712W PF:1.000 Freq:50.00Hz Lamp Flux:101.708x1 lm		
NAME: SF21-12V-3528-72-3500-80	TYPE: 硅胶	WEIGHT:
SPEC.:	DIM.: 28mm*11.5mm	SERIAL No.:2021120602
MFR.: OLYMPIA	SUR.:1*0.016	Shielding Angle:



C Range: 0 - 360DEG
C Interval: 30.0DEG
Test Speed: HIGH
Temperature:25.3DEG
Operators:LPC
Test Date:2021-12-06

γ Range: 0 - 180DEG
 γ Interval: 1.0DEG
Test System:EVERFINE GO-2000B_V1 SYSTEM V2.0.362
Humidity:65.0%
Test Distance:9.200m [K=1.0000]
Remarks:

LED Avg.L Report

Test:U:12.00V I:0.3927A P:4.712W PF:1.000 Freq:50.00Hz Lamp Flux:101.708x1 lm		
NAME: SF21-12V-3528-72-3500-80	TYPE:硅胶	WEIGHT:
SPEC.:	DIM.: 28mm*11.5mm	SERIAL No.:2021120602
MFR.: OLYMPIA	SUR.:1*0.016	Shielding Angle:

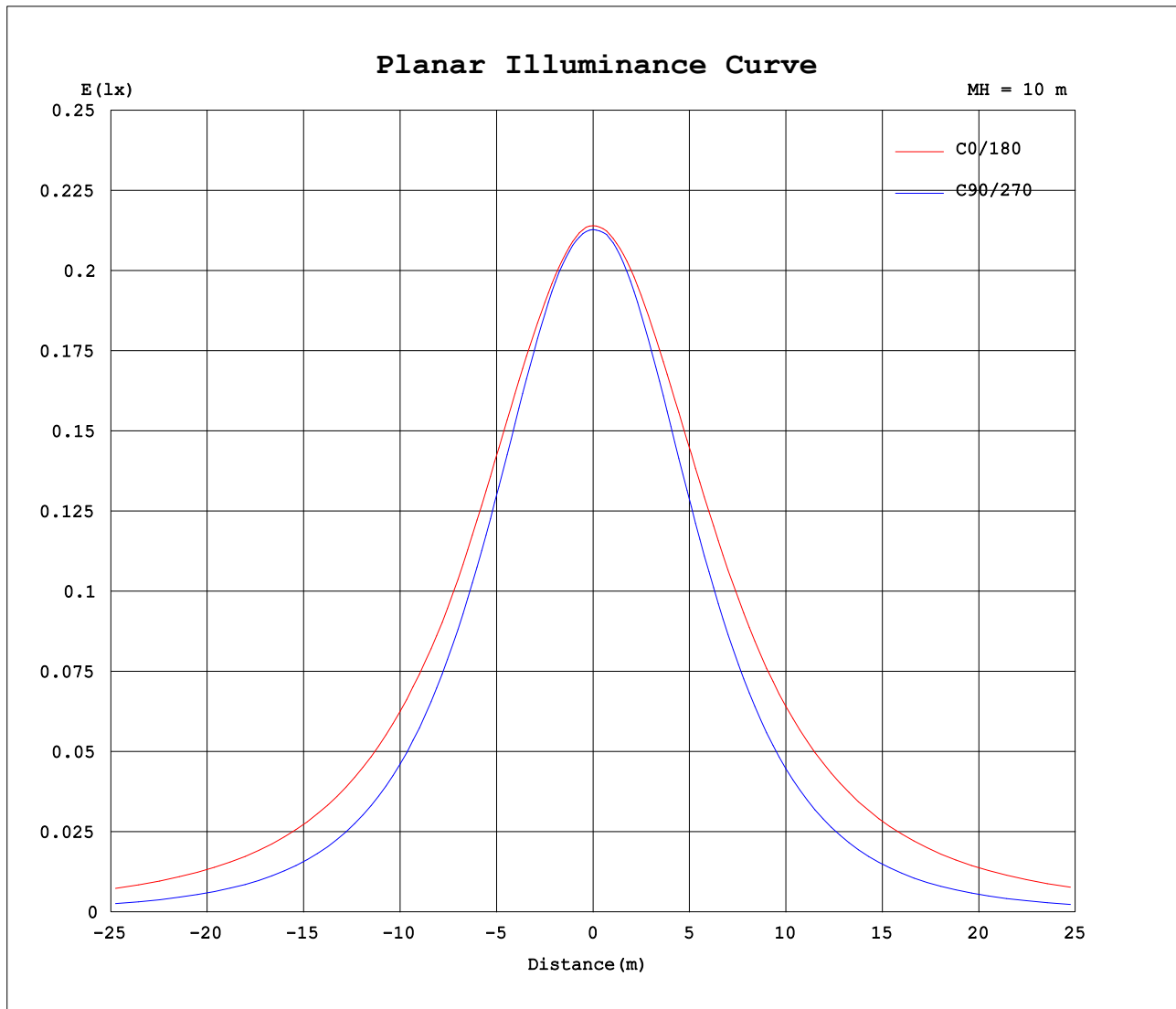
AvgL	cd/m2
L_0~180 (65) av	2209
L_0~180 (75) av	3203
L_0~180 (85) av	8251
L_90~270 (65) av	876
L_90~270 (75) av	609
L_90~270 (85) av	207
L_45 (65) av	1719
L_45 (75) av	2311
L_45 (85) av	5578

Standard: GB/T 29293-2012

C Range: 0 - 360DEG
C Interval: 30.0DEG
Test Speed: HIGH
Temperature:25.3DEG
Operators:LPC
Test Date:2021-12-06

γ Range: 0 - 180DEG
γ Interval: 1.0DEG
Test System:EVERFINE GO-2000B_V1 SYSTEM V2.0.362
Humidity:65.0%
Test Distance:9.200m [K=1.0000]
Remarks:

Planar Illuminance Curve



C Range: 0 - 360DEG
C Interval: 30.0DEG
Test Speed: HIGH
Temperature: 25.3DEG
Operators: LPC
Test Date: 2021-12-06

γ Range: 0 - 180DEG
 γ Interval: 1.0DEG
Test System: EVERFINE GO-2000B_V1 SYSTEM V2.0.362
Humidity: 65.0%
Test Distance: 9.200m [K=1.0000]
Remarks:

LUMINOUS DISTRIBUTION INTENSITY DATA

Test:U:12.00V I:0.3927A P:4.712W PF:1.000 Freq:50.00Hz Lamp Flux:101.708x1 lm		
NAME: SF21-12V-3528-72-3500-80	TYPE: 硅胶	WEIGHT:
SPEC.:	DIM.: 28mm*11.5mm	SERIAL No.:2021120602
MFR.: OLYMPIA	SUR.:1*0.016	Shielding Angle:

Table--1

UNIT: cd

C (DEG) γ (DEG)	0	30	60	90	120	150	180	210	240	270	300	330						
0	21.4	21.4	21.3	21.3	21.3	21.2	21.4	21.4	21.3	21.3	21.3	21.2						
5	21.3	21.2	21.3	21.2	21.2	21.1	21.4	21.4	21.3	21.2	21.2	21.2						
10	21.1	21.0	21.0	20.9	20.9	20.9	21.2	21.2	21.0	20.9	20.9	21.0						
15	20.8	20.6	20.5	20.3	20.4	20.6	21.0	20.9	20.5	20.3	20.4	20.7						
20	20.4	20.2	19.7	19.5	19.7	20.1	20.7	20.4	19.8	19.4	19.6	20.2						
25	20.0	19.7	18.9	18.5	18.9	19.7	20.3	19.9	19.0	18.3	18.7	19.7						
30	19.5	19.1	17.9	17.4	18.0	19.1	19.9	19.3	18.1	17.1	17.7	19.2						
35	18.9	18.4	16.9	16.0	17.0	18.4	19.4	18.7	17.1	15.8	16.7	18.5						
40	18.3	17.5	15.8	14.6	16.0	17.6	18.8	17.9	16.1	14.3	15.7	17.7						
45	17.7	16.7	14.6	13.1	14.8	16.8	18.1	17.1	14.9	12.7	14.6	16.8						
50	17.0	16.0	13.4	11.4	13.5	16.0	17.5	16.2	13.7	11.0	13.4	16.1						
55	16.2	15.1	12.1	9.70	12.2	15.1	16.8	15.4	12.3	9.23	12.1	15.3						
60	15.4	14.1	10.8	7.94	10.9	14.2	16.1	14.5	11.0	7.43	10.8	14.4						
65	14.6	13.2	9.59	6.18	9.60	13.2	15.2	13.6	9.70	5.66	9.63	13.4						
70	13.8	12.3	8.38	4.42	8.37	12.3	14.4	12.6	8.44	3.91	8.42	12.5						
75	12.9	11.4	7.21	2.77	7.18	11.4	13.6	11.7	7.23	2.27	7.24	11.6						
80	12.1	10.5	6.21	1.35	6.16	10.6	12.7	10.9	6.19	0.97	6.22	10.8						
85	11.2	9.65	5.35	0.33	5.30	9.71	11.9	10.00	5.30	0.25	5.35	9.91						
90	10.2	8.76	4.64	0.30	4.59	8.87	11.0	9.14	4.59	0.20	4.62	9.03						
95	9.34	7.95	4.01	0.30	4.04	8.07	10.0	8.30	4.00	0.21	3.91	8.16						
100	8.34	6.57	3.56	0.33	3.53	6.67	8.98	6.98	3.55	0.21	3.33	6.72						
105	7.60	6.17	2.97	0.34	2.57	6.25	8.18	6.51	2.83	0.21	3.10	5.53						
110	6.92	5.71	2.25	0.35	2.54	5.41	7.21	5.84	2.54	0.22	2.81	5.76						
115	6.33	5.29	2.44	0.36	2.44	4.92	6.51	5.28	2.47	0.23	2.61	5.32						
120	5.79	4.88	2.09	0.38	2.37	4.62	5.93	4.82	2.45	0.24	2.36	4.90						
125	5.27	4.47	1.77	0.39	2.34	4.29	5.42	4.41	2.38	0.28	2.07	4.50						
130	4.76	3.77	1.59	0.41	2.25	3.95	4.94	4.10	2.28	0.30	1.80	3.93						
135	4.27	2.78	1.46	0.42	2.19	3.59	4.44	3.69	2.14	0.33	1.60	3.09						
140	3.79	2.09	1.33	0.43	1.99	3.28	3.89	3.35	2.03	0.35	1.45	2.64						
145	3.22	1.79	1.23	0.45	1.85	2.91	3.43	3.04	1.89	0.36	1.29	2.26						
150	2.69	1.51	1.10	0.46	1.71	2.62	3.08	2.69	1.75	0.39	1.22	1.93						
155	2.29	1.28	1.09	0.46	1.54	2.29	2.67	2.39	1.57	0.40	1.17	1.59						
160	1.93	1.09	1.08	0.47	1.38	1.96	2.25	2.13	1.42	0.42	1.11	1.32						
165	1.57	0.93	1.04	0.47	1.23	1.60	1.89	1.74	1.27	0.44	1.07	1.17						
170	0.83	0.87	0.92	0.47	1.04	1.34	0.88	1.45	1.08	0.45	0.94	1.09						
175	0.65	0.71	0.74	0.48	0.86	0.97	0.75	1.11	0.89	0.46	0.78	0.91						
180	0.50	0.49	0.49	0.48	0.50	0.50	0.50	0.51	0.49	0.46	0.47	0.50						

C Range: 0 - 360DEG
C Interval: 30.0DEG
Test Speed: HIGH
Temperature:25.3DEG
Operators:LPC
Test Date:2021-12-06

γ Range: 0 - 180DEG
γ Interval: 1.0DEG
Test System:EVERFINE GO-2000B_V1 SYSTEM V2.0.362
Humidity:65.0%
Test Distance:9.200m [K=1.0000]
Remarks:

Photometric Data Table [cd]

G/C	0.0	30.0	60.0	90.0	120.0	150.0	180.0	210.0	240.0	270.0
0.0	21.40	21.35	21.34	21.28	21.26	21.24	21.40	21.35	21.34	21.28
3.0	21.36	21.30	21.34	21.24	21.26	21.20	21.39	21.36	21.30	21.28
6.0	21.26	21.20	21.23	21.13	21.16	21.11	21.35	21.34	21.21	21.21
9.0	21.11	21.05	21.06	20.95	20.99	20.99	21.28	21.23	21.07	21.00
12.0	20.94	20.87	20.82	20.67	20.74	20.81	21.16	21.07	20.82	20.68
15.0	20.76	20.65	20.47	20.29	20.41	20.60	21.01	20.89	20.48	20.26
18.0	20.57	20.39	20.05	19.82	20.02	20.33	20.82	20.64	20.09	19.77
21.0	20.36	20.13	19.59	19.31	19.60	20.07	20.62	20.34	19.65	19.20
24.0	20.13	19.82	19.06	18.70	19.11	19.77	20.43	20.05	19.19	18.55
27.0	19.85	19.49	18.50	18.06	18.60	19.46	20.19	19.72	18.68	17.87
30.0	19.53	19.11	17.90	17.35	18.03	19.10	19.94	19.34	18.12	17.11
33.0	19.15	18.68	17.29	16.58	17.44	18.69	19.63	19.01	17.53	16.31
36.0	18.74	18.21	16.67	15.75	16.84	18.25	19.29	18.57	16.93	15.47
39.0	18.38	17.72	16.02	14.90	16.18	17.77	18.92	18.09	16.29	14.57
42.0	18.07	17.17	15.34	14.00	15.50	17.26	18.53	17.59	15.61	13.63
45.0	17.71	16.73	14.63	13.05	14.78	16.77	18.15	17.07	14.90	12.66
48.0	17.31	16.29	13.90	12.09	14.04	16.29	17.78	16.58	14.16	11.66
51.0	16.88	15.79	13.15	11.09	13.26	15.79	17.39	16.08	13.40	10.63
54.0	16.41	15.26	12.36	10.05	12.46	15.27	16.98	15.58	12.60	9.597
57.0	15.92	14.72	11.57	9.028	11.67	14.73	16.54	15.04	11.80	8.526
60.0	15.44	14.14	10.80	7.942	10.88	14.20	16.07	14.48	11.00	7.431
63.0	14.96	13.57	10.08	6.872	10.11	13.62	15.57	13.93	10.21	6.386
66.0	14.47	13.02	9.346	5.827	9.356	13.06	15.09	13.36	9.446	5.315
69.0	13.97	12.48	8.622	4.761	8.607	12.50	14.58	12.80	8.692	4.244
72.0	13.45	11.92	7.893	3.746	7.878	11.95	14.10	12.25	7.938	3.235
75.0	12.93	11.41	7.210	2.772	7.184	11.42	13.60	11.74	7.230	2.274
78.0	12.41	10.87	6.596	1.867	6.556	10.90	13.09	11.20	6.587	1.434
81.0	11.89	10.34	6.023	1.093	5.973	10.39	12.57	10.68	5.994	0.7455
84.0	11.35	9.829	5.505	0.4412	5.460	9.869	12.04	10.17	5.471	0.2772
87.0	10.77	9.276	5.048	0.3130	5.007	9.362	11.51	9.646	5.004	0.2162
90.0	10.22	8.758	4.635	0.2981	4.595	8.869	10.97	9.143	4.592	0.2027
93.0	9.686	8.271	4.258	0.2932	4.238	8.361	10.42	8.630	4.220	0.2049
96.0	9.174	7.788	3.891	0.2966	3.956	7.907	9.868	8.133	3.899	0.2072
99.0	8.502	6.594	3.619	0.3218	3.720	6.714	9.150	7.052	3.658	0.2095
102.0	8.038	6.432	3.188	0.3330	2.813	6.538	8.657	6.806	3.120	0.2118
105.0	7.595	6.166	2.966	0.3443	2.573	6.246	8.175	6.509	2.826	0.2141
108.0	7.178	5.884	2.505	0.3490	2.555	5.693	7.712	6.032	2.618	0.2164
111.0	6.786	5.628	2.266	0.3537	2.513	5.276	7.015	5.735	2.517	0.2188
114.0	6.444	5.367	2.392	0.3619	2.463	5.005	6.638	5.393	2.482	0.2211
117.0	6.108	5.115	2.348	0.3670	2.422	4.794	6.266	5.087	2.448	0.2311
120.0	5.786	4.879	2.091	0.3770	2.375	4.623	5.929	4.815	2.447	0.2412
123.0	5.469	4.628	1.901	0.3920	2.356	4.427	5.618	4.569	2.412	0.2613
126.0	5.168	4.382	1.709	0.3951	2.338	4.201	5.331	4.343	2.367	0.2806
129.0	4.866	3.934	1.614	0.4041	2.260	4.020	5.035	4.162	2.307	0.2931
132.0	4.560	3.275	1.533	0.4122	2.237	3.773	4.758	3.946	2.236	0.3085
135.0	4.268	2.778	1.458	0.4242	2.187	3.593	4.445	3.692	2.141	0.3253
138.0	3.986	2.311	1.377	0.4272	2.056	3.407	3.722	3.514	2.070	0.3399
141.0	3.675	2.010	1.312	0.4422	1.950	3.181	3.814	3.278	1.990	0.3500
144.0	3.333	1.824	1.252	0.4423	1.880	2.970	3.547	3.107	1.910	0.3601
147.0	2.986	1.678	1.186	0.4581	1.830	2.794	3.306	2.900	1.884	0.3702
150.0	2.695	1.507	1.096	0.4600	1.709	2.618	3.080	2.694	1.754	0.3869
153.0	2.439	1.362	1.091	0.4620	1.608	2.417	2.818	2.519	1.643	0.3970
156.0	2.192	1.241	1.087	0.4639	1.503	2.211	2.582	2.342	1.528	0.4070
159.0	1.986	1.125	1.084	0.4658	1.412	2.030	2.286	2.201	1.447	0.4171
162.0	1.775	0.9998	1.081	0.4678	1.332	1.803	2.175	1.971	1.362	0.4322
165.0	1.574	0.9298	1.036	0.4697	1.232	1.603	1.893	1.745	1.271	0.4423
168.0	0.8849	0.9195	0.9703	0.4716	1.111	1.447	0.9395	1.563	1.150	0.4477
171.0	0.7895	0.8389	0.8999	0.4736	1.001	1.271	0.8289	1.388	1.035	0.4532
174.0	0.6839	0.7485	0.8196	0.4755	0.8950	1.045	0.7688	1.172	0.9293	0.4586
177.0	0.5635	0.5324	0.5141	0.4774	0.6405	0.8439	0.6885	0.9806	0.7914	0.4574
180.0	0.5026	0.4925	0.4875	0.4774	0.4975	0.4975	0.5026	0.5076	0.4925	0.4573
G/C	300.0	330.0								
0.0	21.26	21.24								
3.0	21.25	21.24								
6.0	21.15	21.20								
9.0	21.00	21.08								
12.0	20.71	20.90								
15.0	20.36	20.65								
18.0	19.93	20.37								
21.0	19.43	20.07								
24.0	18.88	19.78								
27.0	18.29	19.51								
30.0	17.71	19.15								

C Range: 0 - 360DEG
 C Interval: 30.0DEG
 Test Speed: HIGH
 Temperature: 25.3DEG
 Operators: LPC
 Test Date: 2021-12-06

γ Range: 0 - 180DEG
 γ Interval: 1.0DEG
 Test System: EVERFINE GO-2000B_V1 SYSTEM V2.0.362
 Humidity: 65.0%
 Test Distance: 9.200m [K=1.0000]
 Remarks:

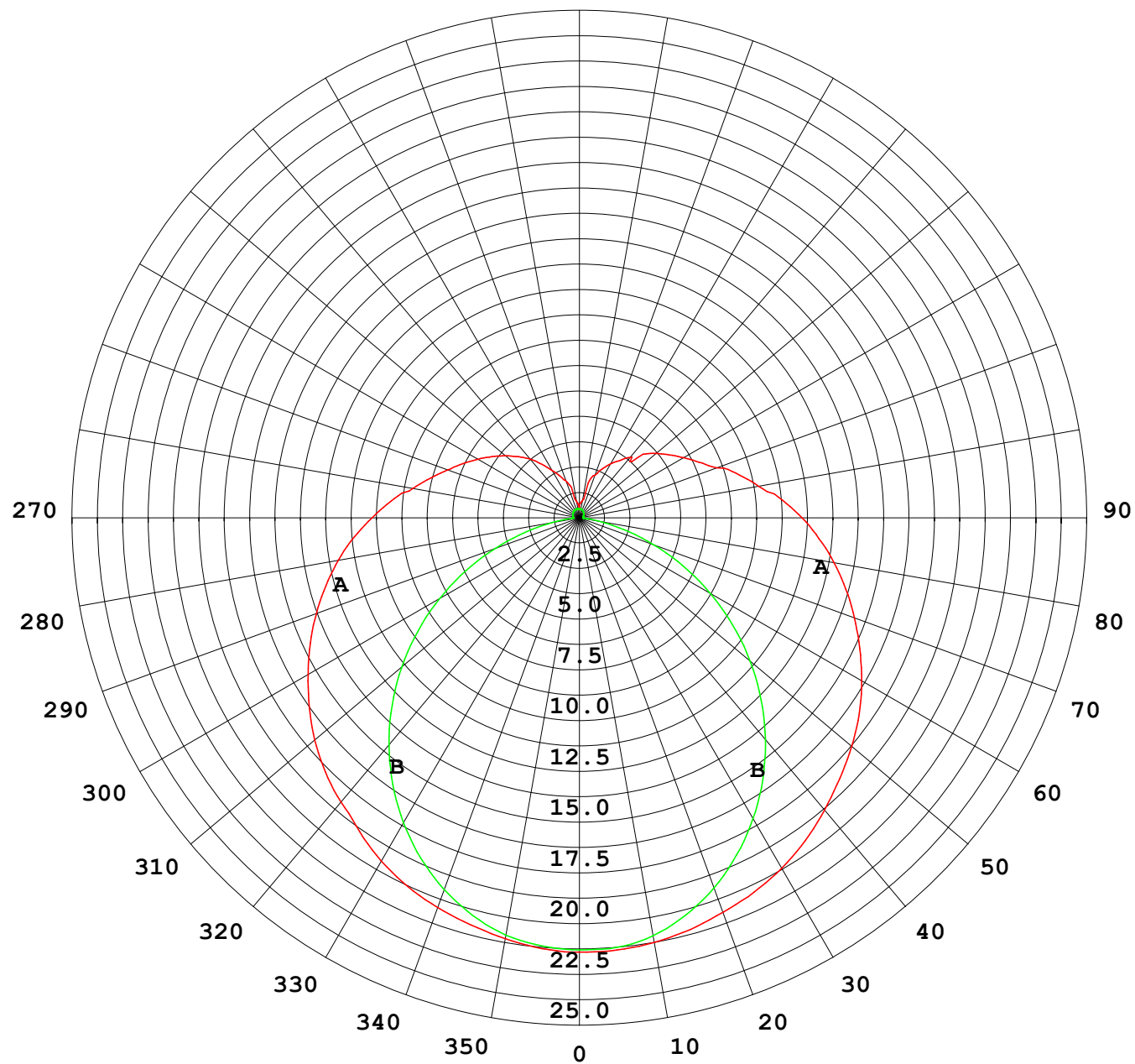
Photometric Data Table [cd]

33.0	17.12	18.76
36.0	16.55	18.33
39.0	15.94	17.84
42.0	15.32	17.33
45.0	14.63	16.82
48.0	13.92	16.41
51.0	13.17	15.93
54.0	12.40	15.44
57.0	11.63	14.91
60.0	10.83	14.36
63.0	10.11	13.80
66.0	9.381	13.25
69.0	8.657	12.71
72.0	7.933	12.17
75.0	7.240	11.65
78.0	6.617	11.11
81.0	6.034	10.60
84.0	5.511	10.07
87.0	5.044	9.551
90.0	4.617	9.028
93.0	4.175	8.525
96.0	3.824	7.973
99.0	3.437	6.773
102.0	3.235	6.635
105.0	3.096	5.535
108.0	2.944	5.804
111.0	2.809	5.670
114.0	2.653	5.408
117.0	2.472	5.147
120.0	2.356	4.896
123.0	2.186	4.659
126.0	2.025	4.418
129.0	1.874	4.062
132.0	1.728	3.655
135.0	1.603	3.093
138.0	1.497	2.860
141.0	1.407	2.559
144.0	1.321	2.328
147.0	1.241	2.131
150.0	1.216	1.930
153.0	1.191	1.730
156.0	1.166	1.543
159.0	1.140	1.362
162.0	1.085	1.227
165.0	1.065	1.166
168.0	1.010	1.131
171.0	0.9292	1.066
174.0	0.8435	0.9552
177.0	0.5570	0.8098
180.0	0.4724	0.4975

C Range: 0 - 360DEG
C Interval: 30.0DEG
Test Speed: HIGH
Temperature:25.3DEG
Operators:LPC
Test Date:2021-12-06

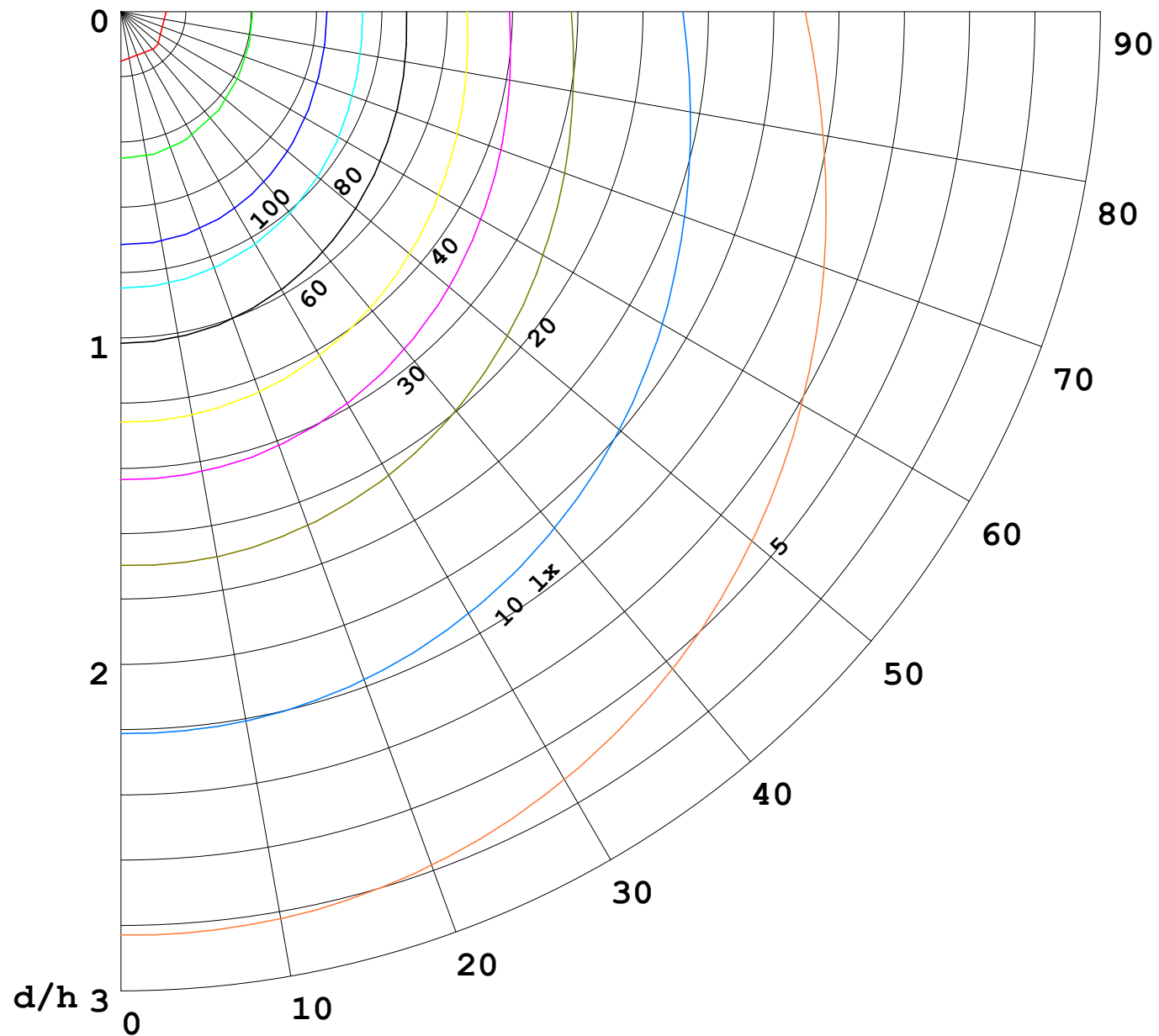
γ Range: 0 - 180DEG
γ Interval: 1.0DEG
Test System:EVERFINE GO-2000B_V1 SYSTEM V2.0.362
Humidity:65.0%
Test Distance:9.200m [K=1.0000]
Remarks:

I (cd)



1000 lm

$\kappa = 1$



F = 5000 lm
 K = 0.7
 Hcc = 0.0 m
 Hfc = 0.0 m
 Eave = 100 lx

	Pcc	Pw	Pfc
—	70	50	30
—	50	30	20

