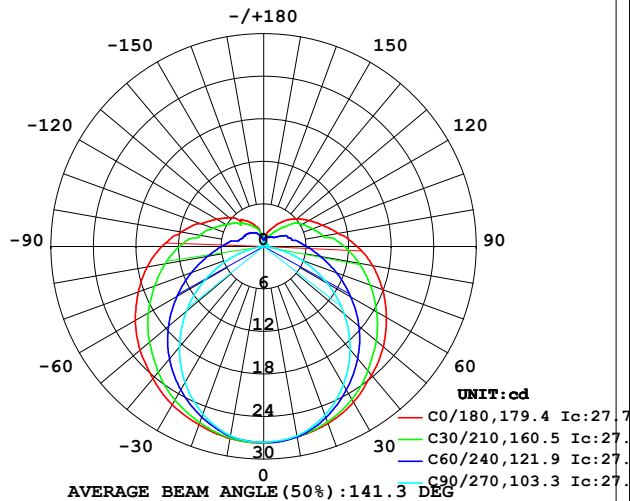


## LUMINAIRE PHOTOMETRIC TEST REPORT

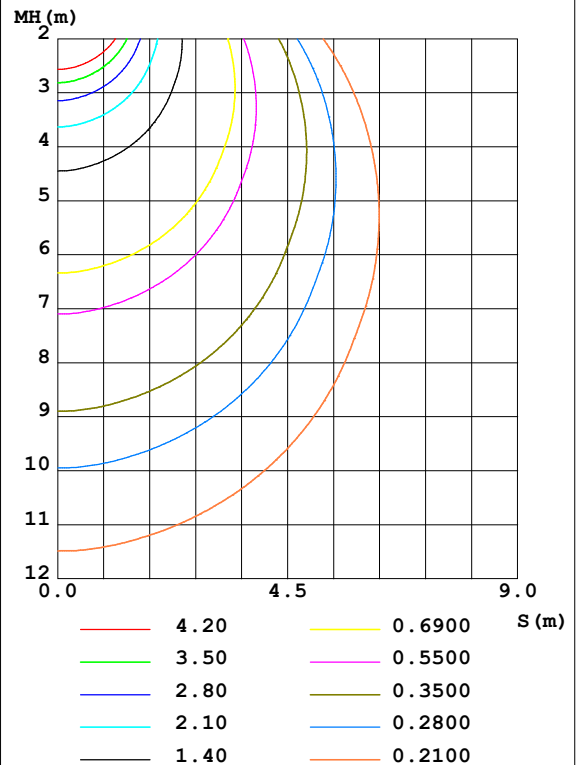
Test:U:12.00V I:0.3918A P:4.702W PF:1.000 Freq:50.00Hz Lamp Flux:132.189x1 lm		
NAME: SF21-12V-3528-72-4000-80	TYPE: 硅胶	WEIGHT:
SPEC.:	DIM.: 28mm*11.5mm	SERIAL No.:2021120603
MFR.: OLYMPIA	SUR.:1*0.016	Shielding Angle:

DATA OF LAMP		PHOTOMETRIC DATA Eff: 28.12 lm/W			
MODEL	3528	I <sub>max</sub> (cd)	27.71	S/MH (C0/180)	1.40
NOMINAL POWER (W)	5	LOR (%)	100.0	S/MH (C90/270)	1.20
RATED VOLTAGE (V)	12	TOTAL FLUX (lm)	132.19	η UP, DN (C0-180)	10.4, 39.1
NOMINAL FLUX (lm)	132.189	CIE CLASS	SEMI-D.	η UP, DN (C180-360)	10.9, 39.6
LAMPS INSIDE	1	η up (%)	21.3	CIBSE SHR NOM	1.50
TEST VOLTAGE (V)	12	η down (%)	78.7	CIBSE SHR MAX	1.55

LUMINOUS INTENSITY DISTRIBUTION DIAGRAM



C0 PLANE ISOLUX DIAGRAM (UNIT: lx)



C Range: 0 - 360DEG  
C Interval: 30.0DEG  
Test Speed: HIGH  
Temperature: 25.3DEG  
Operators: LPC  
Test Date: 2021-12-06

γ Range: 0 - 180DEG  
γ Interval: 1.0DEG  
Test System: EVERFINE GO-2000B\_V1 SYSTEM V2.0.362  
Humidity: 65.0%  
Test Distance: 9.200m [K=1.0000]  
Remarks:

## ZONAL FLUX DIAGRAM

## ZONAL FLUX DIAGRAM:

$\gamma$	C0	C45	C90	C135	C180	C225	C270	C315	$\gamma$	$\Phi$ zone	$\Phi$ total	%lum, lamp
10	27.30	27.27	27.12	27.09	27.49	27.30	27.10	27.30	0- 10	2.620	2.620	1.98,1.98
20	26.56	26.02	25.31	25.76	26.76	26.02	25.13	25.96	10- 20	7.535	10.16	7.68,7.68
30	25.36	24.12	22.53	23.94	25.79	24.20	22.18	24.12	20- 30	11.56	21.72	16.4,16.4
40	23.66	21.76	18.95	21.58	24.32	21.92	18.49	21.94	30- 40	14.35	36.06	27.3,27.3
50	22.04	19.15	14.86	18.95	22.77	19.28	14.24	19.35	40- 50	15.70	51.77	39.2,39.2
60	19.99	16.27	10.37	16.09	20.91	16.45	9.658	16.57	50- 60	15.66	67.42	51,51
70	17.87	13.49	5.766	13.28	18.83	13.64	5.109	13.79	60- 70	14.35	81.77	61.9,61.9
80	15.60	10.91	1.711	10.75	16.69	11.07	1.279	11.22	70- 80	12.25	94.02	71.1,71.1
90	13.20	8.727	0.3719	8.649	14.37	8.918	0.2589	9.039	80- 90	10.01	104.0	78.7,78.7
100	10.71	6.659	0.4474	6.617	11.80	6.878	0.2713	6.922	90-100	8.049	112.1	84.8,84.8
110	8.837	5.504	0.4637	5.166	9.471	5.461	0.3053	5.795	100-110	6.133	118.2	89.4,89.4
120	7.369	4.644	0.4966	4.534	7.693	4.662	0.3518	4.694	110-120	4.775	123.0	93,93
130	6.078	3.437	0.5327	3.957	6.331	4.031	0.3869	3.790	120-130	3.636	126.6	95.8,95.8
140	4.806	2.407	0.5662	3.271	4.964	3.373	0.4439	2.687	130-140	2.494	129.1	97.7,97.7
150	3.459	1.708	0.6293	2.681	3.984	2.814	0.5226	2.023	140-150	1.606	130.7	98.9,98.9
160	2.423	1.457	0.6345	2.008	2.974	2.241	0.5528	1.588	150-160	0.9314	131.7	99.6,99.6
170	1.131	1.229	0.6397	1.337	1.100	1.543	0.6131	1.384	160-170	0.4325	132.1	99.9,99.9
180	0.6734	0.6584	0.6433	0.6483	0.6734	0.6634	0.6081	0.6483	170-180	0.1004	132.2	100,100
DEG	LUMINOUS INTENSITY:cd									UNIT:lm		

Conical surface Flux(90deg): 43.833 lm

%lum = 33.2%

%lamp = 33.2%

Conical surface Flux(120deg): 67.421 lm

%lum = 51.0%

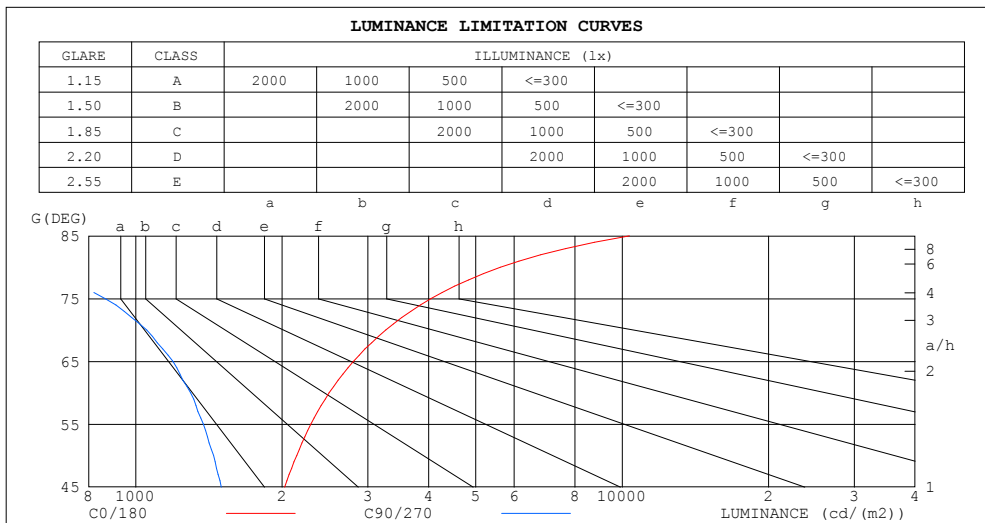
%lamp = 51.0%

C Range: 0 - 360DEG  
 C Interval: 30.0DEG  
 Test Speed: HIGH  
 Temperature:25.3DEG  
 Operators:LPC  
 Test Date:2021-12-06

$\gamma$  Range: 0 - 180DEG  
 $\gamma$  Interval: 1.0DEG  
 Test System:EVERFINE GO-2000B\_V1 SYSTEM V2.0.362  
 Humidity:65.0%  
 Test Distance:9.200m [K=1.0000]  
 Remarks:

## LUMINANCE LIMITATION CURVES

Test:U:12.00V I:0.3918A P:4.702W PF:1.000 Freq:50.00Hz Lamp Flux:132.189x1 lm		
NAME: SF21-12V-3528-72-4000-80	TYPE: 硅胶	WEIGHT:
SPEC.:	DIM.: 28mm*11.5mm	SERIAL No.:2021120603
MFR.: OLYMPIA	SUR.:1*0.016	Shielding Angle:



LUMINANCE cd/(m2)		
G (DEG)	C0/180	C90/270
85	10346	317
80	5616	616
75	4044	865
70	3266	1054
65	2802	1192
60	2499	1297
55	2290	1377
50	2143	1445
45	2025	1499

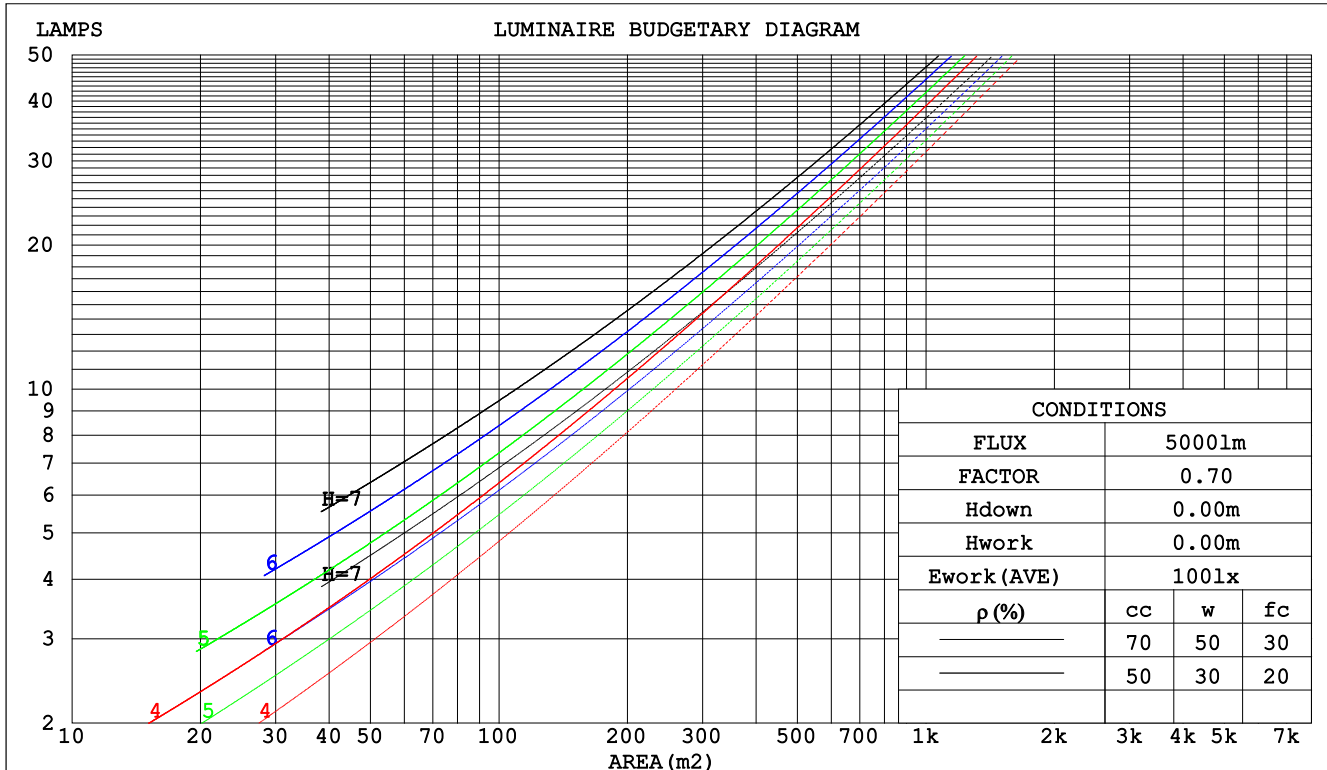
C Range: 0 - 360DEG  
C Interval: 30.0DEG  
Test Speed: HIGH  
Temperature:25.3DEG  
Operators:LPC  
Test Date:2021-12-06

$\gamma$  Range: 0 - 180DEG  
 $\gamma$  Interval: 1.0DEG  
Test System:EVERFINE GO-2000B\_V1 SYSTEM V2.0.362  
Humidity:65.0%  
Test Distance:9.200m [K=1.0000]  
Remarks:

## CU AND LUMINAIRE BUDGETARY ESTIMATE DIAGRAM

Test:U:12.00V I:0.3918A P:4.702W PF:1.000 Freq:50.00Hz Lamp Flux:132.189x1 lm		
NAME: SF21-12V-3528-72-4000-80	TYPE: 硅胶	WEIGHT:
SPEC.:	DIM.: 28mm*11.5mm	SERIAL No.:2021120603
MFR.: OLYMPIA	SUR.:1*0.016	Shielding Angle:

pcc	80%			70%			50%			30%			10%			0
pw	50%	30%	10%	50%	30%	10%	50%	30%	10%	50%	30%	10%	50%	30%	10%	0
pfc	20%			20%			20%			20%			20%			0
RCR	RCR:Room Cavity Ratio						Coefficients of Utilization(CU)									
0.0	1.14	1.14	1.14	1.09	1.09	1.09	.99	.99	.99	.91	.91	.91	.82	.82	.82	.79
1.0	.95	.90	.85	.90	.86	.81	.82	.78	.75	.75	.72	.69	.68	.65	.63	.59
2.0	.81	.73	.67	.77	.70	.64	.70	.64	.60	.64	.59	.55	.58	.54	.51	.47
3.0	.70	.61	.54	.67	.59	.52	.61	.54	.49	.55	.50	.45	.50	.46	.42	.39
4.0	.62	.52	.45	.59	.50	.44	.54	.47	.41	.49	.43	.38	.44	.39	.35	.32
5.0	.55	.45	.38	.52	.44	.37	.48	.40	.35	.44	.37	.32	.40	.34	.30	.27
6.0	.49	.40	.33	.47	.38	.32	.43	.36	.30	.39	.33	.28	.36	.30	.26	.24
7.0	.44	.35	.29	.42	.34	.28	.39	.32	.26	.36	.29	.25	.33	.27	.23	.21
8.0	.40	.32	.26	.39	.30	.25	.35	.28	.23	.33	.26	.22	.30	.25	.21	.18
9.0	.37	.28	.23	.35	.27	.22	.33	.26	.21	.30	.24	.20	.28	.22	.19	.16
10.0	.34	.26	.20	.32	.25	.20	.30	.23	.19	.28	.22	.18	.26	.20	.17	.15



C Range: 0 - 360DEG  
 C Interval: 30.0DEG  
 Test Speed: HIGH  
 Temperature:25.3DEG  
 Operators:LPC  
 Test Date:2021-12-06

γ Range: 0 - 180DEG  
 γ Interval: 1.0DEG  
 Test System:EVERFINE GO-2000B\_V1 SYSTEM V2.0.362  
 Humidity:65.0%  
 Test Distance:9.200m [K=1.0000]  
 Remarks:

## WEC AND CCEC

Test:U:12.00V I:0.3918A P:4.702W PF:1.000 Freq:50.00Hz Lamp Flux:132.189x1 lm		
NAME: SF21-12V-3528-72-4000-80	TYPE: 硅胶	WEIGHT:
SPEC.:	DIM.: 28mm*11.5mm	SERIAL No.:2021120603
MFR.: OLYMPIA	SUR.:1*0.016	Shielding Angle:

pcc	80%			70%			50%			30%			10%			0	
pw	50%	30%	10%	50%	30%	10%	50%	30%	10%	50%	30%	10%	50%	30%	10%	0	
pfc	20%			20%			20%			20%			20%			0	
RCR	RCR:Room Cavity Ratio						Wall Exitance Coefficients (WEC)										
0.0																	
1.0	.385	.219	.069	.371	.212	.067	.345	.198	.063	.322	.186	.060	.300	.174	.056		
2.0	.332	.182	.056	.320	.176	.054	.296	.165	.051	.275	.154	.048	.255	.144	.045		
3.0	.295	.157	.047	.283	.152	.046	.262	.142	.043	.243	.133	.041	.225	.124	.039		
4.0	.265	.138	.040	.255	.133	.039	.236	.125	.037	.218	.117	.035	.201	.109	.033		
5.0	.241	.123	.036	.232	.119	.035	.214	.112	.033	.198	.104	.031	.183	.098	.029		
6.0	.221	.111	.032	.212	.107	.031	.196	.101	.029	.181	.094	.028	.168	.088	.026		
7.0	.203	.101	.029	.196	.098	.028	.181	.092	.026	.168	.086	.025	.155	.080	.024		
8.0	.189	.092	.026	.182	.089	.025	.168	.084	.024	.156	.079	.023	.144	.074	.022		
9.0	.176	.085	.024	.169	.083	.023	.157	.078	.022	.145	.073	.021	.134	.068	.020		
10.0	.165	.079	.022	.159	.077	.021	.147	.072	.020	.136	.068	.019	.126	.063	.018		

pcc	80%			70%			50%			30%			10%			0	
pw	50%	30%	10%	50%	30%	10%	50%	30%	10%	50%	30%	10%	50%	30%	10%	0	
pfc	20%			20%			20%			20%			20%			0	
RCR	RCR:Room Cavity Ratio						Ceiling Cavity Exitance Coefficients(CCEC)										
0.0	.353	.353	.353	.301	.301	.301	.206	.206	.206	.118	.118	.118	.038	.038	.038		
1.0	.349	.319	.292	.299	.274	.251	.204	.188	.174	.118	.109	.101	.038	.035	.033		
2.0	.342	.296	.258	.293	.255	.223	.201	.177	.155	.116	.103	.091	.037	.033	.030		
3.0	.335	.280	.236	.287	.242	.205	.197	.168	.144	.114	.098	.085	.037	.032	.028		
4.0	.327	.268	.222	.281	.231	.193	.193	.161	.136	.112	.094	.080	.036	.031	.026		
5.0	.319	.258	.213	.274	.223	.185	.189	.156	.131	.109	.092	.077	.035	.030	.026		
6.0	.312	.250	.206	.268	.217	.179	.185	.152	.127	.107	.089	.075	.035	.029	.025		
7.0	.305	.244	.200	.262	.211	.175	.181	.148	.124	.105	.087	.074	.034	.029	.024		
8.0	.298	.238	.196	.257	.206	.171	.178	.145	.122	.103	.085	.072	.033	.028	.024		
9.0	.292	.233	.193	.252	.202	.169	.174	.142	.120	.102	.084	.071	.033	.028	.024		
10.0	.286	.229	.191	.247	.199	.167	.171	.140	.118	.100	.083	.071	.032	.027	.023		

C Range: 0 - 360DEG  
 C Interval: 30.0DEG  
 Test Speed: HIGH  
 Temperature:25.3DEG  
 Operators:LPC  
 Test Date:2021-12-06

γ Range: 0 - 180DEG  
 γ Interval: 1.0DEG  
 Test System:EVERFINE GO-2000B\_V1 SYSTEM V2.0.362  
 Humidity:65.0%  
 Test Distance:9.200m [K=1.0000]  
 Remarks:

UGR(Unified Glare Rating) Table

Test:U:12.00V I:0.3918A P:4.702W PF:1.000 Freq:50.00Hz Lamp Flux:132.189x1 lm										
NAME: SF21-12V-3528-72-4000-80					TYPE:硅胶			WEIGHT:		
SPEC.:					DIM.: 28mm*11.5mm			SERIAL No.:2021120603		
MFR.: OLYMPIA					SUR.:1*0.016			Shielding Angle:		
ceiling/cavity	0.7	0.7	0.5	0.5	0.3	0.7	0.7	0.5	0.5	0.3
walls	0.5	0.3	0.5	0.3	0.3	0.5	0.3	0.5	0.3	0.3
working plane	0.2	0.2	0.2	0.2	0.2	0.2	0.2	0.2	0.2	0.2
Room dimensions	Viewed crosswise					Viewed endwise				
x = 2H y = 2H	21.9	23.2	22.4	23.8	24.4	19.5	20.8	20.0	21.4	22.0
3H	24.6	25.8	25.2	26.4	27.1	20.9	22.1	21.5	22.7	23.4
4H	26.1	27.3	26.7	27.9	28.6	21.4	22.6	22.0	23.2	23.8
6H	27.8	28.9	28.4	29.5	30.3	21.7	22.8	22.3	23.4	24.1
8H	28.8	29.8	29.4	30.5	31.2	21.8	22.8	22.4	23.4	24.2
12H	29.8	30.9	30.5	31.5	32.2	21.8	22.8	22.4	23.4	24.2
4H 2H	22.4	23.6	23.0	24.2	24.9	20.7	21.9	21.3	22.5	23.2
3H	25.4	26.4	26.1	27.1	27.8	22.4	23.5	23.1	24.1	24.8
4H	27.1	28.1	27.8	28.7	29.5	23.2	24.1	23.9	24.8	25.6
6H	29.0	29.9	29.7	30.6	31.4	23.8	24.6	24.5	25.3	26.1
8H	30.1	30.9	30.8	31.6	32.4	23.9	24.7	24.6	25.4	26.3
12H	31.3	32.0	32.0	32.8	33.6	24.0	24.8	24.8	25.5	26.3
8H 4H	27.5	28.3	28.2	29.0	29.8	24.4	25.2	25.1	25.9	26.7
6H	29.7	30.4	30.4	31.1	32.0	25.4	26.1	26.2	26.8	27.7
8H	31.0	31.6	31.7	32.3	33.2	25.9	26.5	26.6	27.2	28.1
12H	32.5	33.0	33.2	33.7	34.6	26.2	26.8	27.0	27.5	28.4
12H 4H	27.5	28.2	28.2	28.9	29.8	24.8	25.5	25.5	26.3	27.1
6H	29.8	30.4	30.6	31.2	32.0	26.1	26.7	26.9	27.5	28.3
8H	31.2	31.7	32.0	32.5	33.4	26.8	27.3	27.5	28.1	29.0
Variations with the observer position at spacings:										
S = 1.0H	+ 0.1 / - 0.1					+ 0.1 / - 0.1				
1.5H	+ 0.2 / - 0.3					+ 0.2 / - 0.3				
2.0H	+ 0.2 / - 0.3					+ 0.3 / - 0.4				

CIE Pub.117, 132.2 lm Total Lamp Luminous Flux Correct (8log(F/F0) = -7.0)

C Range: 0 - 360DEG  
C Interval: 30.0DEG  
Test Speed: HIGH  
Temperature:25.3DEG  
Operators:LPC  
Test Date:2021-12-06

γ Range: 0 - 180DEG  
γ Interval: 1.0DEG  
Test System:EVERFINE GO-2000B\_V1 SYSTEM V2.0.362  
Humidity:65.0%  
Test Distance:9.200m [K=1.0000]  
Remarks:

## UTILIZATION FACTORS TABLE

Test:U:12.00V I:0.3918A P:4.702W PF:1.000 Freq:50.00Hz Lamp Flux:132.189x1 lm		
NAME: SF21-12V-3528-72-4000-80	TYPE: 硅胶	WEIGHT:
SPEC.:	DIM.: 28mm*11.5mm	SERIAL No.:2021120603
MFR.: OLYMPIA	SUR.:1*0.016	Shielding Angle:

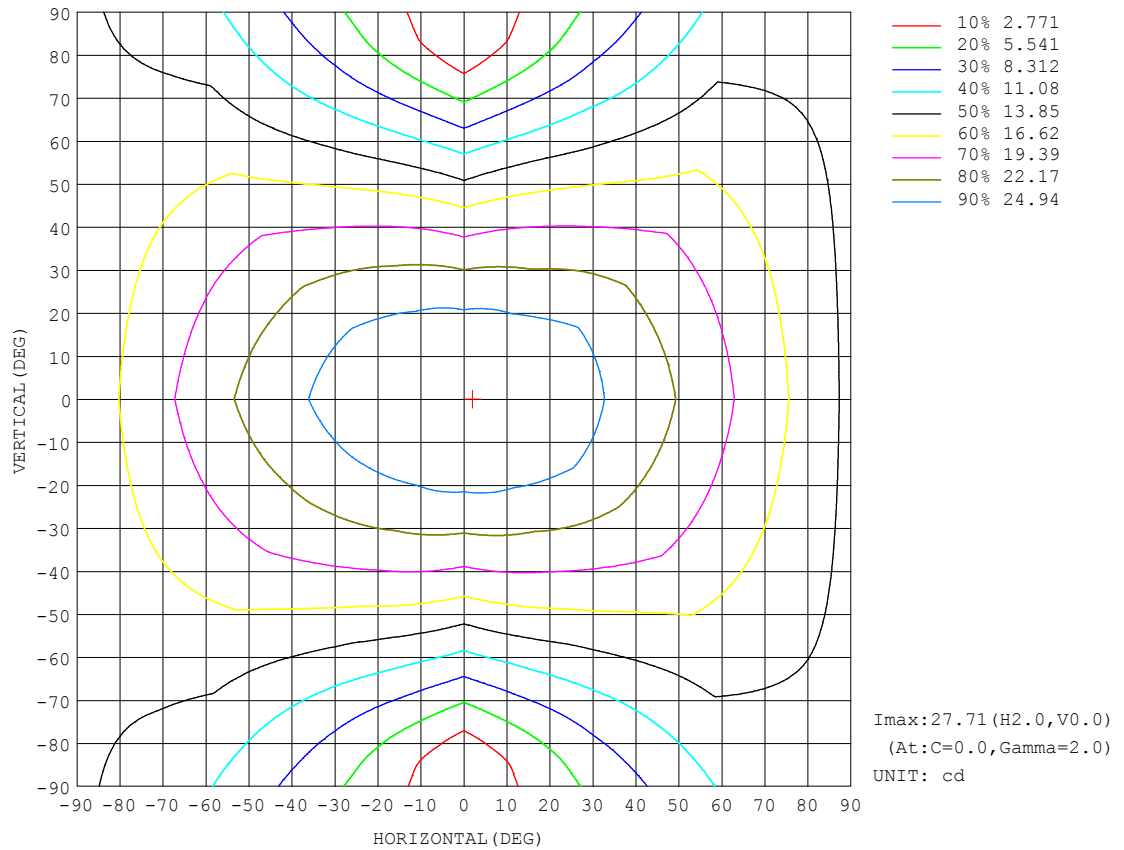
REFLECTANCE										
Ceiling	0.8	0.8	0.8	0.7	0.7	0.7	0.5	0.5	0.5	0
Walls	0.7	0.5	0.3	0.7	0.5	0.3	0.7	0.5	0.3	0
Working plane	0.2	0.2	0.2	0.2	0.2	0.2	0.2	0.2	0.2	0
ROOM INDEX	UTILIZATION FACTORS (PERCENT) $k(RI) \times RCR = 5$									
$k = 0.60$	47	34	27	46	34	27	44	33	26	20
0.80	56	43	35	54	42	34	51	41	34	25
1.00	64	51	42	62	49	42	58	50	40	31
1.25	71	58	49	68	56	48	63	53	46	36
1.50	76	63	55	73	62	54	67	58	51	40
2.00	83	72	63	80	69	62	73	65	59	46
2.50	87	77	69	84	74	67	77	69	63	50
3.00	91	82	74	87	79	72	80	73	68	53
4.00	96	88	81	92	84	78	84	78	73	58
5.00	99	92	86	95	88	83	86	81	77	61
ROOM INDEX	UF (total)									Direct
According to DIN EN 13032-2 2004			Suspended					SHRNOM = 1.25		

C Range: 0 - 360DEG  
 C Interval: 30.0DEG  
 Test Speed: HIGH  
 Temperature: 25.3DEG  
 Operators: LPC  
 Test Date: 2021-12-06

$\gamma$  Range: 0 - 180DEG  
 $\gamma$  Interval: 1.0DEG  
 Test System: EVERFINE GO-2000B\_V1 SYSTEM V2.0.362  
 Humidity: 65.0%  
 Test Distance: 9.200m [K=1.0000]  
 Remarks:

## ISOCANDELA DIAGRAM

Test:U:12.00V I:0.3918A P:4.702W PF:1.000 Freq:50.00Hz Lamp Flux:132.189x1 lm		
NAME: SF21-12V-3528-72-4000-80	TYPE: 硅胶	WEIGHT:
SPEC.:	DIM.: 28mm*11.5mm	SERIAL No.:2021120603
MFR.: OLYMPIA	SUR.:1*0.016	Shielding Angle:



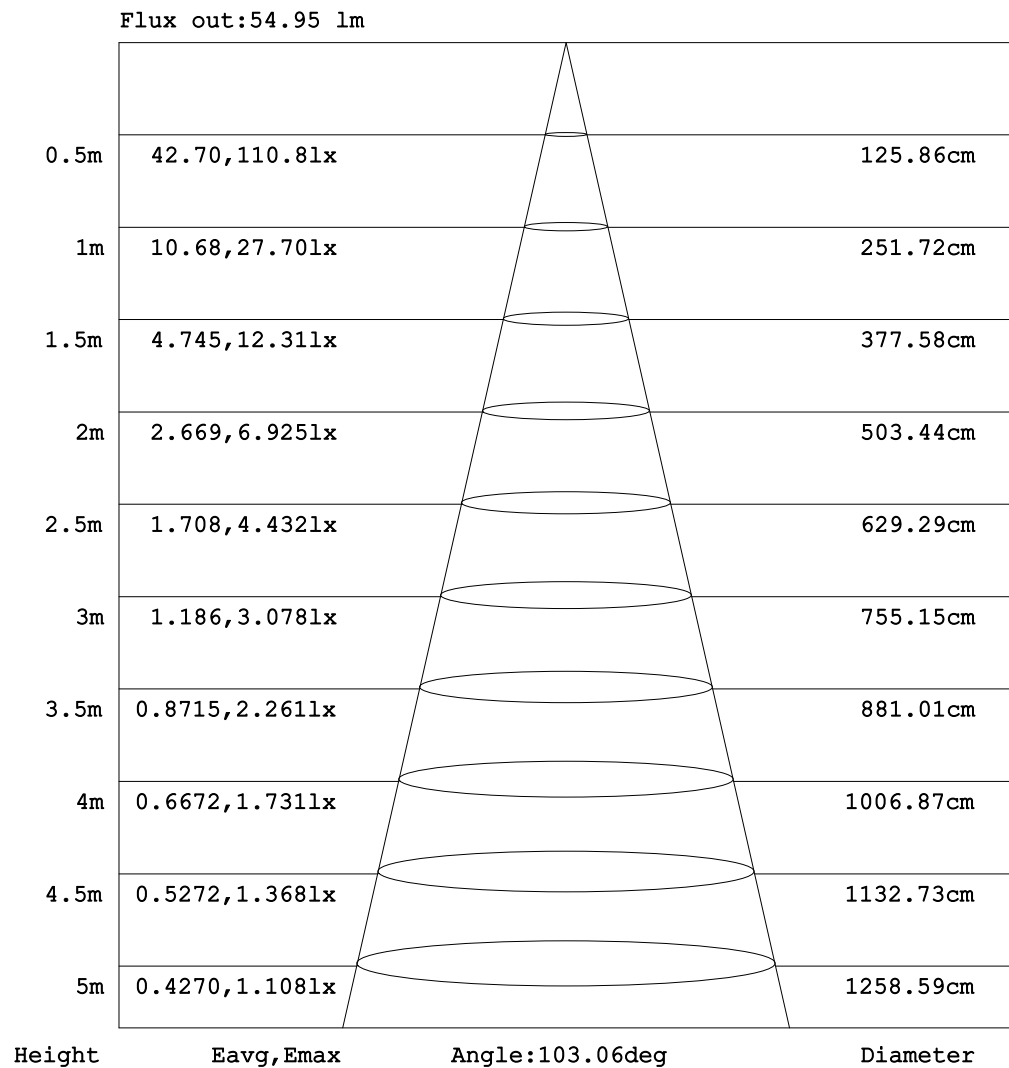
C Range: 0 - 360DEG  
C Interval: 30.0DEG  
Test Speed: HIGH  
Temperature:25.3DEG  
Operators:LPC  
Test Date:2021-12-06

$\gamma$  Range: 0 - 180DEG  
 $\gamma$  Interval: 1.0DEG  
Test System:EVERFINE GO-2000B\_V1 SYSTEM V2.0.362  
Humidity:65.0%  
Test Distance:9.200m [K=1.0000]  
Remarks:



## AAI Figure

Test:U:12.00V I:0.3918A P:4.702W PF:1.000 Freq:50.00Hz Lamp Flux:132.189x1 lm		
NAME: SF21-12V-3528-72-4000-80	TYPE: 硅胶	WEIGHT:
SPEC.:	DIM.: 28mm*11.5mm	SERIAL No.:2021120603
MFR.: OLYMPIA	SUR.:1*0.016	Shielding Angle:



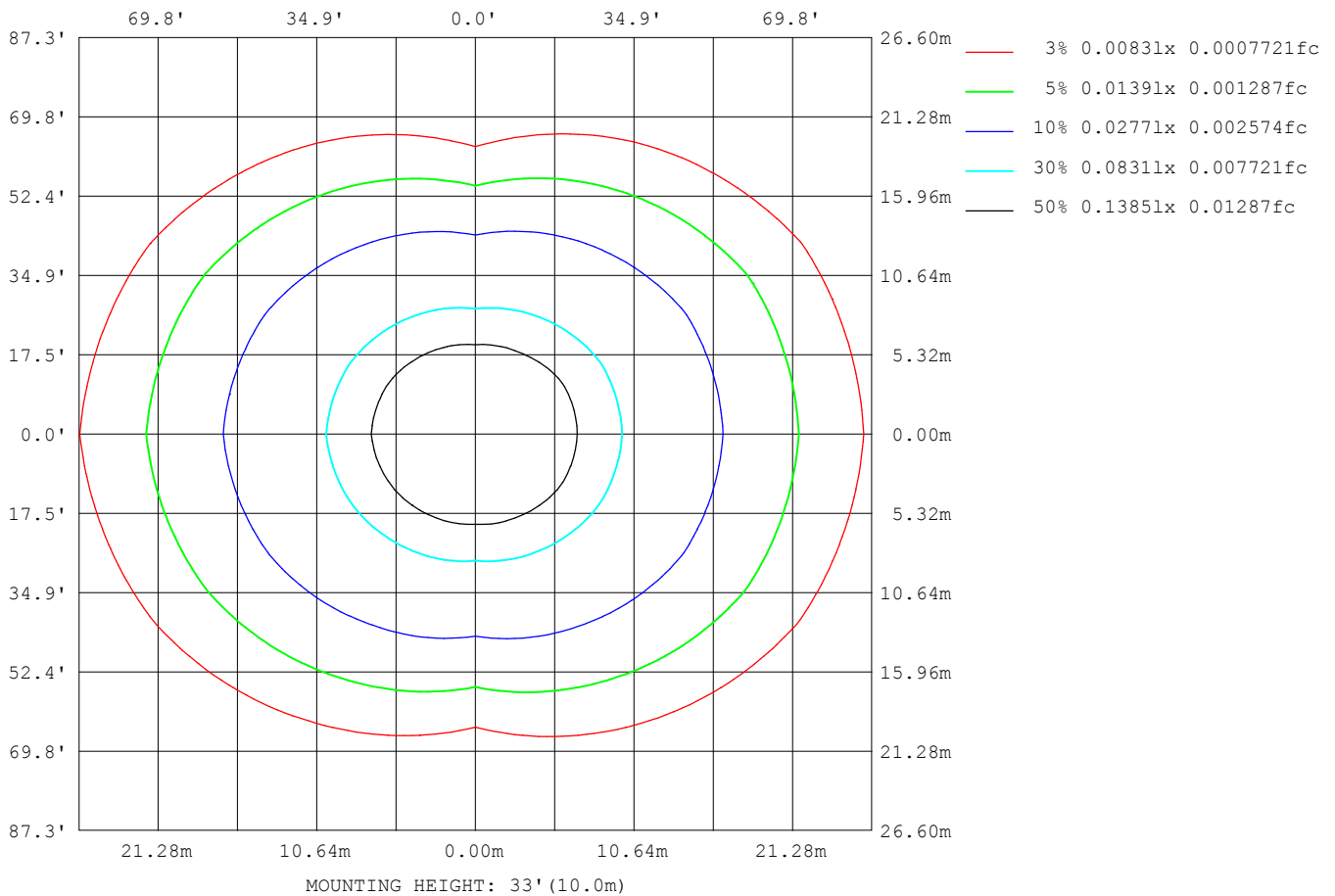
Note: The Curves indicate the illuminated area and the average illumination when the luminaire is at different distance.

C Range: 0 - 360DEG  
 C Interval: 30.0DEG  
 Test Speed: HIGH  
 Temperature: 25.3DEG  
 Operators: LPC  
 Test Date: 2021-12-06

γ Range: 0 - 180DEG  
 γ Interval: 1.0DEG  
 Test System: EVERFINE GO-2000B\_V1 SYSTEM V2.0.362  
 Humidity: 65.0%  
 Test Distance: 9.200m [K=1.0000]  
 Remarks:

## ISOLUX DIAGRAM

Test:U:12.00V I:0.3918A P:4.702W PF:1.000 Freq:50.00Hz Lamp Flux:132.189x1 lm		
NAME: SF21-12V-3528-72-4000-80	TYPE: 硅胶	WEIGHT:
SPEC.:	DIM.: 28mm*11.5mm	SERIAL No.:2021120603
MFR.: OLYMPIA	SUR.:1*0.016	Shielding Angle:



C Range: 0 - 360DEG  
C Interval: 30.0DEG  
Test Speed: HIGH  
Temperature:25.3DEG  
Operators:LPC  
Test Date:2021-12-06

$\gamma$  Range: 0 - 180DEG  
 $\gamma$  Interval: 1.0DEG  
Test System:EVERFINE GO-2000B\_V1 SYSTEM V2.0.362  
Humidity:65.0%  
Test Distance:9.200m [K=1.0000]  
Remarks:

## LED Avg.L Report

Test:U:12.00V I:0.3918A P:4.702W PF:1.000 Freq:50.00Hz Lamp Flux:132.189x1 lm		
NAME: SF21-12V-3528-72-4000-80	TYPE:硅胶	WEIGHT:
SPEC.:	DIM.: 28mm*11.5mm	SERIAL No.:2021120603
MFR.: OLYMPIA	SUR.:1*0.016	Shielding Angle:

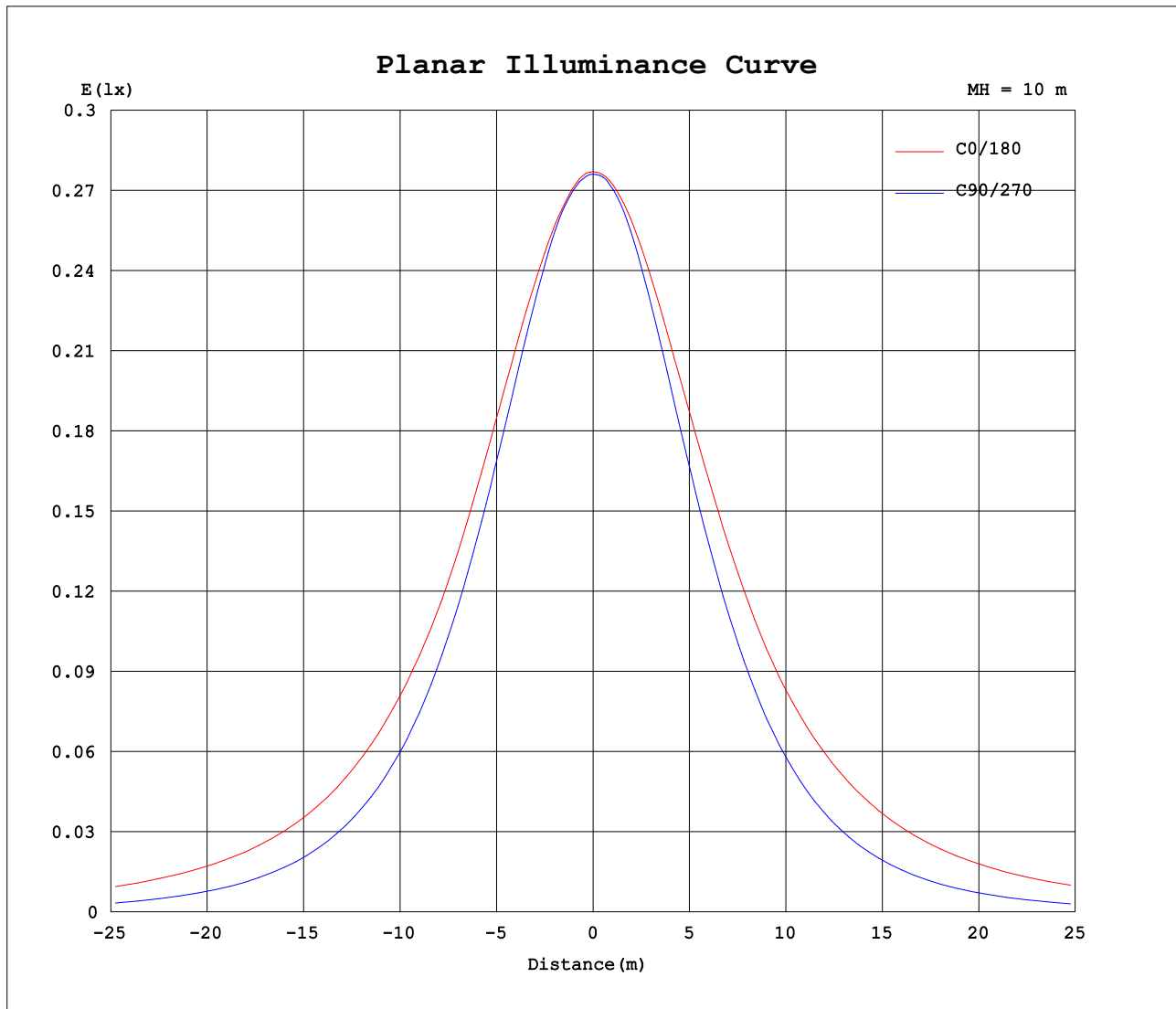
AvgL	cd/m2
L_0~180 (65) av	2870
L_0~180 (75) av	4167
L_0~180 (85) av	10745
L_90~270 (65) av	1142
L_90~270 (75) av	797
L_90~270 (85) av	272
L_45 (65) av	2233
L_45 (75) av	3007
L_45 (85) av	7270

Standard: GB/T 29293-2012

C Range: 0 - 360DEG  
C Interval: 30.0DEG  
Test Speed: HIGH  
Temperature:25.3DEG  
Operators:LPC  
Test Date:2021-12-06

γ Range: 0 - 180DEG  
γ Interval: 1.0DEG  
Test System:EVERFINE GO-2000B\_V1 SYSTEM V2.0.362  
Humidity:65.0%  
Test Distance:9.200m [K=1.0000]  
Remarks:

## Planar Illuminance Curve



C Range: 0 - 360DEG  
C Interval: 30.0DEG  
Test Speed: HIGH  
Temperature: 25.3DEG  
Operators: LPC  
Test Date: 2021-12-06

$\gamma$  Range: 0 - 180DEG  
 $\gamma$  Interval: 1.0DEG  
Test System: EVERFINE GO-2000B\_V1 SYSTEM V2.0.362  
Humidity: 65.0%  
Test Distance: 9.200m [K=1.0000]  
Remarks:

## LUMINOUS DISTRIBUTION INTENSITY DATA

Test:U:12.00V I:0.3918A P:4.702W PF:1.000 Freq:50.00Hz Lamp Flux:132.189x1 lm		
NAME: SF21-12V-3528-72-4000-80	TYPE: 硅胶	WEIGHT:
SPEC.:	DIM.: 28mm*11.5mm	SERIAL No.:2021120603
MFR.: OLYMPIA	SUR.:1*0.016	Shielding Angle:

Table--1

UNIT: cd

C (DEG) γ (DEG)	0	30	60	90	120	150	180	210	240	270	300	330						
0	27.7	27.7	27.7	27.6	27.6	27.6	27.7	27.7	27.7	27.6	27.6	27.6						
5	27.6	27.6	27.6	27.5	27.5	27.4	27.7	27.7	27.5	27.5	27.5	27.6						
10	27.3	27.3	27.3	27.1	27.1	27.1	27.5	27.4	27.2	27.1	27.2	27.4						
15	26.9	26.9	26.6	26.4	26.4	26.6	27.2	27.0	26.5	26.3	26.5	27.0						
20	26.6	26.3	25.7	25.3	25.5	26.0	26.8	26.4	25.6	25.1	25.5	26.4						
25	26.0	25.7	24.6	24.0	24.5	25.4	26.3	25.8	24.6	23.8	24.4	25.8						
30	25.4	24.9	23.3	22.5	23.3	24.6	25.8	25.0	23.4	22.2	23.1	25.1						
35	24.5	24.0	22.0	20.8	22.0	23.7	25.1	24.2	22.1	20.4	21.9	24.3						
40	23.7	22.9	20.6	19.0	20.5	22.6	24.3	23.1	20.7	18.5	20.6	23.3						
45	22.9	21.8	19.1	17.0	19.0	21.6	23.5	22.1	19.2	16.4	19.2	22.1						
50	22.0	20.7	17.5	14.9	17.4	20.5	22.8	21.0	17.5	14.2	17.6	21.1						
55	21.0	19.6	15.9	12.6	15.6	19.4	21.9	19.9	15.8	12.0	16.0	20.0						
60	20.0	18.4	14.1	10.4	14.0	18.2	20.9	18.8	14.1	9.66	14.3	18.9						
65	18.9	17.2	12.5	8.06	12.3	17.0	19.9	17.6	12.5	7.38	12.6	17.7						
70	17.9	16.0	11.0	5.77	10.7	15.8	18.8	16.4	10.9	5.11	11.1	16.5						
75	16.7	14.8	9.45	3.58	9.23	14.7	17.8	15.2	9.35	3.02	9.53	15.4						
80	15.6	13.7	8.13	1.71	7.92	13.6	16.7	14.1	8.01	1.28	8.20	14.2						
85	14.4	12.5	7.00	0.44	6.84	12.5	15.5	13.0	6.88	0.32	7.05	13.1						
90	13.2	11.4	6.08	0.37	5.93	11.4	14.4	11.9	5.95	0.26	6.11	12.0						
95	12.0	10.3	5.33	0.39	5.21	10.3	13.2	10.8	5.22	0.27	5.34	10.9						
100	10.7	8.53	4.79	0.45	4.58	8.65	11.8	9.12	4.64	0.27	4.78	9.07						
105	9.72	7.96	4.10	0.45	3.41	8.09	10.8	8.50	3.62	0.30	4.07	8.44						
110	8.84	7.35	3.66	0.46	3.33	7.00	9.47	7.62	3.31	0.31	3.82	7.77						
115	8.06	6.78	3.58	0.48	3.17	6.39	8.50	6.84	3.19	0.32	3.41	6.83						
120	7.37	6.29	3.00	0.50	3.08	5.99	7.69	6.19	3.13	0.35	3.16	6.23						
125	6.73	5.76	2.44	0.51	2.94	5.53	6.98	5.63	3.01	0.36	2.76	5.87						
130	6.08	4.86	2.02	0.53	2.83	5.08	6.33	5.20	2.86	0.39	2.44	5.14						
135	5.45	3.86	1.85	0.54	2.67	4.57	5.68	4.68	2.71	0.43	2.11	3.96						
140	4.81	3.03	1.78	0.57	2.43	4.11	4.96	4.19	2.55	0.44	1.87	3.50						
145	4.12	2.44	1.65	0.60	2.25	3.68	4.42	3.82	2.38	0.47	1.67	2.94						
150	3.46	1.92	1.50	0.63	2.08	3.29	3.98	3.41	2.22	0.52	1.54	2.50						
155	2.87	1.66	1.49	0.63	1.83	2.79	3.49	3.04	1.99	0.54	1.52	2.05						
160	2.42	1.46	1.46	0.63	1.58	2.43	2.97	2.74	1.74	0.55	1.49	1.69						
165	2.01	1.30	1.41	0.64	1.38	1.96	2.53	2.24	1.52	0.59	1.43	1.51						
170	1.13	1.19	1.27	0.64	1.15	1.52	1.10	1.80	1.28	0.61	1.32	1.45						
175	0.88	0.95	1.00	0.64	0.83	1.09	1.01	1.40	1.08	0.61	1.14	1.27						
180	0.67	0.66	0.66	0.64	0.65	0.65	0.67	0.67	0.65	0.61	0.63	0.67						

C Range: 0 - 360DEG  
C Interval: 30.0DEG  
Test Speed: HIGH  
Temperature:25.3DEG  
Operators:LPC  
Test Date:2021-12-06

γ Range: 0 - 180DEG  
γ Interval: 1.0DEG  
Test System:EVERFINE GO-2000B\_V1 SYSTEM V2.0.362  
Humidity:65.0%  
Test Distance:9.200m [K=1.0000]  
Remarks:

Photometric Data Table [cd]

G/C	0.0	30.0	60.0	90.0	120.0	150.0	180.0	210.0	240.0	270.0
0.0	27.70	27.68	27.65	27.61	27.59	27.57	27.70	27.68	27.65	27.61
3.0	27.67	27.63	27.65	27.55	27.56	27.49	27.70	27.69	27.62	27.61
6.0	27.54	27.51	27.56	27.42	27.41	27.35	27.65	27.63	27.47	27.48
9.0	27.34	27.33	27.36	27.22	27.19	27.17	27.54	27.47	27.27	27.23
12.0	27.16	27.11	27.07	26.86	26.84	26.93	27.37	27.27	26.94	26.80
15.0	26.95	26.85	26.62	26.35	26.40	26.62	27.19	27.00	26.49	26.27
18.0	26.72	26.55	26.10	25.75	25.89	26.27	26.94	26.69	25.98	25.62
21.0	26.46	26.23	25.49	25.07	25.31	25.91	26.67	26.31	25.40	24.87
24.0	26.15	25.83	24.81	24.30	24.67	25.51	26.40	25.89	24.78	24.05
27.0	25.77	25.38	24.11	23.44	23.99	25.09	26.12	25.48	24.11	23.16
30.0	25.36	24.90	23.34	22.53	23.26	24.61	25.79	25.02	23.38	22.18
33.0	24.88	24.36	22.56	21.53	22.48	24.07	25.40	24.53	22.62	21.14
36.0	24.33	23.75	21.77	20.45	21.69	23.46	24.96	23.96	21.82	20.04
39.0	23.81	23.11	20.93	19.35	20.84	22.83	24.49	23.35	20.98	18.87
42.0	23.39	22.39	20.05	18.19	19.95	22.19	23.99	22.70	20.09	17.65
45.0	22.91	21.75	19.15	16.96	19.02	21.57	23.51	22.06	19.17	16.43
48.0	22.39	21.17	18.20	15.69	18.03	20.98	23.09	21.43	18.21	15.12
51.0	21.84	20.52	17.22	14.41	17.03	20.33	22.59	20.82	17.21	13.78
54.0	21.23	19.83	16.22	13.09	16.00	19.65	22.08	20.18	16.18	12.44
57.0	20.61	19.14	15.19	11.70	14.97	18.95	21.51	19.50	15.14	11.07
60.0	19.99	18.39	14.15	10.37	13.96	18.22	20.91	18.77	14.12	9.658
63.0	19.37	17.66	13.19	8.952	12.98	17.47	20.28	18.06	13.14	8.287
66.0	18.73	16.96	12.24	7.590	12.00	16.76	19.65	17.33	12.16	6.909
69.0	18.08	16.25	11.29	6.208	11.04	16.06	19.04	16.63	11.19	5.547
72.0	17.41	15.54	10.34	4.846	10.11	15.38	18.40	15.93	10.25	4.246
75.0	16.75	14.83	9.447	3.580	9.226	14.70	17.76	15.25	9.345	3.024
78.0	16.05	14.14	8.632	2.399	8.411	14.02	17.12	14.57	8.521	1.908
81.0	15.36	13.45	7.893	1.410	7.687	13.36	16.46	13.90	7.762	0.9773
84.0	14.66	12.75	7.205	0.5966	7.034	12.71	15.79	13.24	7.089	0.3479
87.0	13.92	12.06	6.616	0.4138	6.460	12.02	15.07	12.56	6.501	0.2716
90.0	13.20	11.38	6.078	0.3719	5.927	11.37	14.37	11.88	5.954	0.2589
93.0	12.48	10.73	5.600	0.3870	5.469	10.74	13.64	11.23	5.486	0.2627
96.0	11.81	10.09	5.203	0.3971	5.102	10.14	12.95	10.61	5.095	0.2664
99.0	10.91	8.574	4.881	0.4174	4.806	8.709	12.00	9.213	4.783	0.2701
102.0	10.30	8.337	4.290	0.4504	3.713	8.462	11.38	8.892	3.802	0.2864
105.0	9.717	7.965	4.096	0.4549	3.412	8.090	10.76	8.500	3.623	0.2990
108.0	9.179	7.588	3.922	0.4594	3.365	7.341	10.16	7.877	3.422	0.3028
111.0	8.676	7.236	3.659	0.4659	3.287	6.854	9.210	7.474	3.251	0.3065
114.0	8.209	6.889	3.604	0.4725	3.206	6.477	8.672	6.992	3.203	0.3136
117.0	7.777	6.588	3.424	0.4875	3.141	6.216	8.165	6.575	3.171	0.3271
120.0	7.369	6.291	2.997	0.4966	3.083	5.985	7.693	6.193	3.131	0.3518
123.0	6.977	5.980	2.665	0.5126	3.086	5.729	7.261	5.846	3.050	0.3558
126.0	6.600	5.653	2.328	0.5177	2.890	5.432	6.848	5.529	2.990	0.3619
129.0	6.213	5.069	2.087	0.5277	2.865	5.171	6.457	5.288	2.894	0.3820
132.0	5.831	4.301	1.900	0.5428	2.785	4.838	6.085	4.996	2.809	0.4020
135.0	5.454	3.863	1.855	0.5429	2.669	4.573	5.675	4.676	2.709	0.4271
138.0	5.082	3.311	1.824	0.5579	2.508	4.331	4.678	4.448	2.618	0.4405
141.0	4.656	2.924	1.764	0.5704	2.388	4.000	4.870	4.147	2.522	0.4456
144.0	4.243	2.542	1.684	0.5901	2.287	3.749	4.502	3.906	2.412	0.4573
147.0	3.866	2.205	1.593	0.6133	2.192	3.522	4.256	3.649	2.367	0.4974
150.0	3.459	1.919	1.498	0.6293	2.076	3.286	3.984	3.413	2.216	0.5226
153.0	3.097	1.723	1.498	0.6309	1.940	2.999	3.673	3.177	2.085	0.5377
156.0	2.726	1.643	1.483	0.6324	1.790	2.693	3.401	2.986	1.944	0.5428
159.0	2.483	1.512	1.468	0.6340	1.629	2.512	3.040	2.800	1.794	0.5528
162.0	2.273	1.372	1.438	0.6355	1.508	2.230	2.849	2.549	1.648	0.5628
165.0	2.011	1.302	1.408	0.6371	1.378	1.964	2.526	2.242	1.518	0.5879
168.0	1.212	1.251	1.332	0.6386	1.232	1.688	1.220	1.951	1.372	0.5981
171.0	1.081	1.145	1.227	0.6402	1.106	1.456	1.055	1.744	1.221	0.6124
174.0	0.9252	1.010	1.116	0.6417	0.9207	1.170	1.015	1.468	1.105	0.6102
177.0	0.7846	0.7531	0.6755	0.6433	0.6689	0.8681	0.9596	1.257	0.9974	0.6081
180.0	0.6734	0.6584	0.6584	0.6433	0.6483	0.6483	0.6734	0.6734	0.6533	0.6081
G/C	300.0	330.0								
0.0	27.59	27.57								
3.0	27.57	27.59								
6.0	27.48	27.58								
9.0	27.30	27.44								
12.0	26.96	27.26								
15.0	26.51	26.96								
18.0	25.97	26.61								
21.0	25.32	26.26								
24.0	24.62	25.90								
27.0	23.87	25.54								
30.0	23.13	25.10								

C Range: 0 - 360DEG  
 C Interval: 30.0DEG  
 Test Speed: HIGH  
 Temperature: 25.3DEG  
 Operators: LPC  
 Test Date: 2021-12-06

γ Range: 0 - 180DEG  
 γ Interval: 1.0DEG  
 Test System: EVERFINE GO-2000B\_V1 SYSTEM V2.0.362  
 Humidity: 65.0%  
 Test Distance: 9.200m [K=1.0000]  
 Remarks:

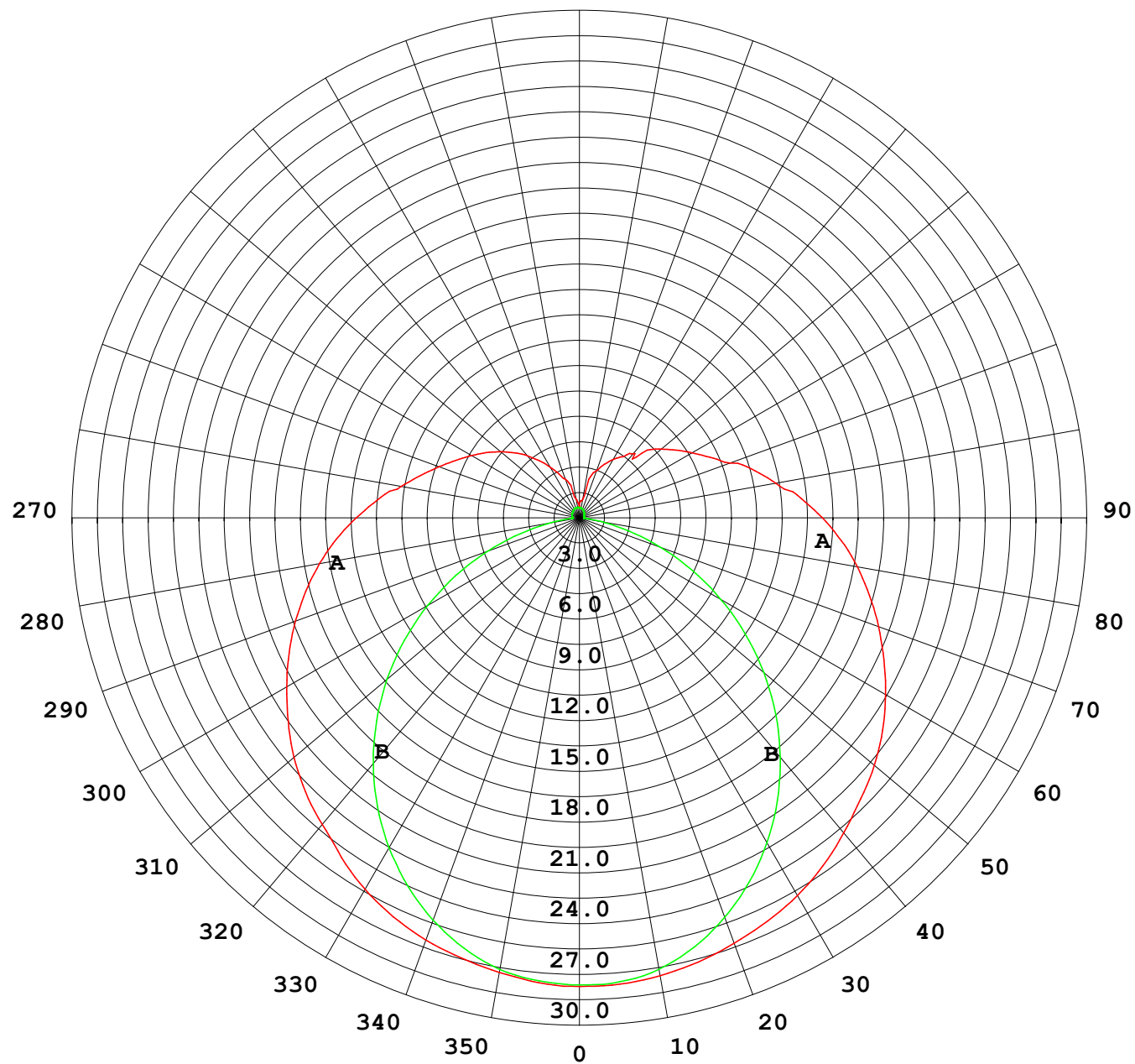
## Photometric Data Table [cd]

33.0	22.38	24.61
36.0	21.64	24.07
39.0	20.87	23.48
42.0	20.06	22.82
45.0	19.18	22.13
48.0	18.25	21.47
51.0	17.29	20.89
54.0	16.32	20.26
57.0	15.30	19.59
60.0	14.26	18.88
63.0	13.24	18.16
66.0	12.32	17.45
69.0	11.38	16.76
72.0	10.44	16.06
75.0	9.526	15.38
78.0	8.702	14.69
81.0	7.948	14.01
84.0	7.265	13.33
87.0	6.662	12.64
90.0	6.114	11.96
93.0	5.622	11.30
96.0	5.210	10.66
99.0	4.874	9.141
102.0	4.355	8.846
105.0	4.066	8.439
108.0	3.979	8.032
111.0	3.824	7.635
114.0	3.512	7.058
117.0	3.296	6.445
120.0	3.160	6.227
123.0	2.924	6.042
126.0	2.713	5.780
129.0	2.527	5.329
132.0	2.281	4.766
135.0	2.105	3.959
138.0	1.969	3.785
141.0	1.824	3.329
144.0	1.728	3.036
147.0	1.583	2.775
150.0	1.543	2.504
153.0	1.528	2.242
156.0	1.513	1.976
159.0	1.493	1.734
162.0	1.457	1.588
165.0	1.432	1.508
168.0	1.352	1.478
171.0	1.276	1.428
174.0	1.181	1.327
177.0	0.8322	1.167
180.0	0.6282	0.6684

C Range: 0 - 360DEG  
C Interval: 30.0DEG  
Test Speed: HIGH  
Temperature:25.3DEG  
Operators:LPC  
Test Date:2021-12-06

γ Range: 0 - 180DEG  
γ Interval: 1.0DEG  
Test System:EVERFINE GO-2000B\_V1 SYSTEM V2.0.362  
Humidity:65.0%  
Test Distance:9.200m [K=1.0000]  
Remarks:

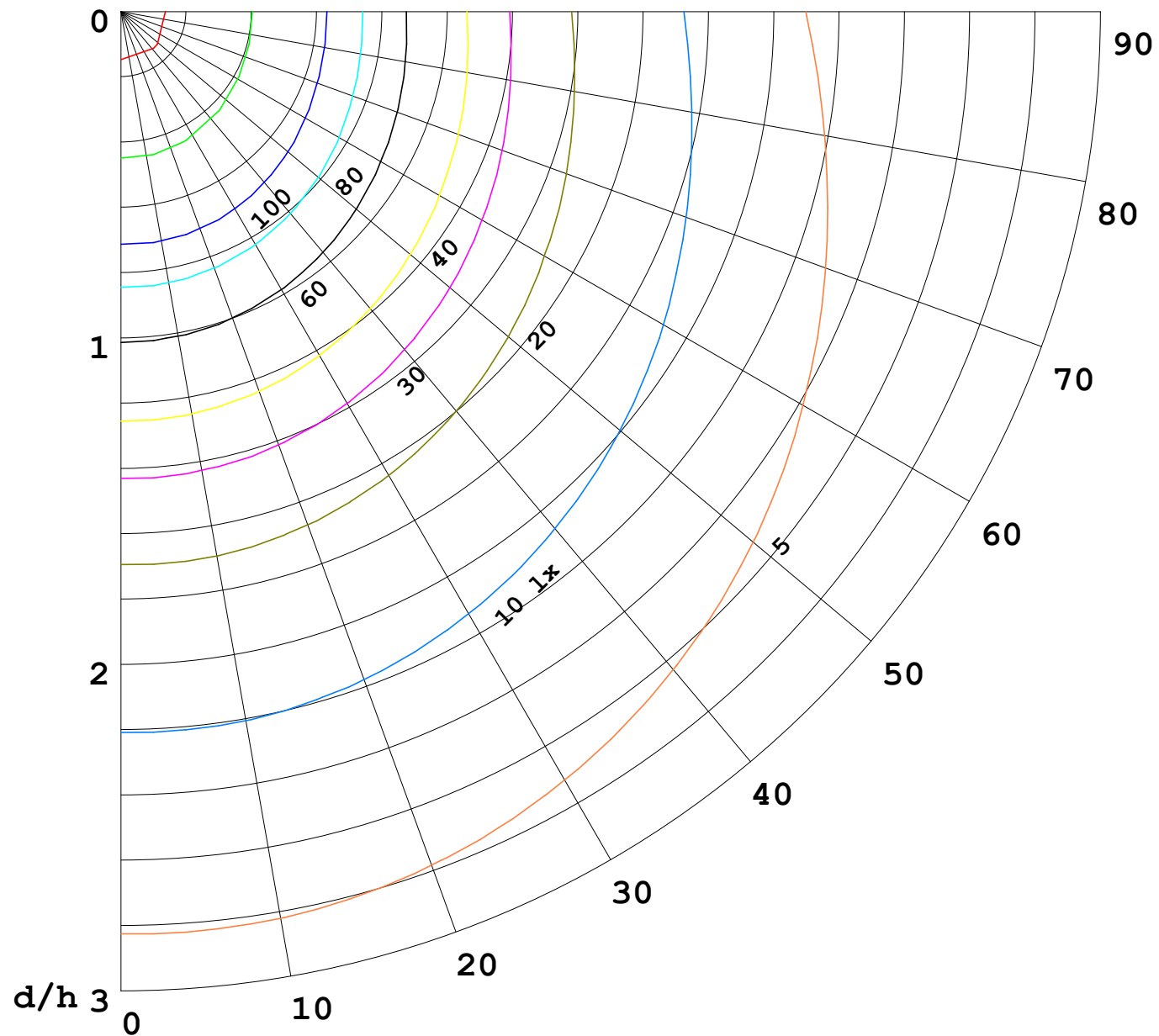
I (cd)





1000 lm

$\kappa = 1$



F = 5000 lm  
 K = 0.7  
 Hcc = 0.0 m  
 Hfc = 0.0 m  
 Eave = 100 lx

	Pcc	Pw	Pfc
—	70	50	30
—	50	30	20

