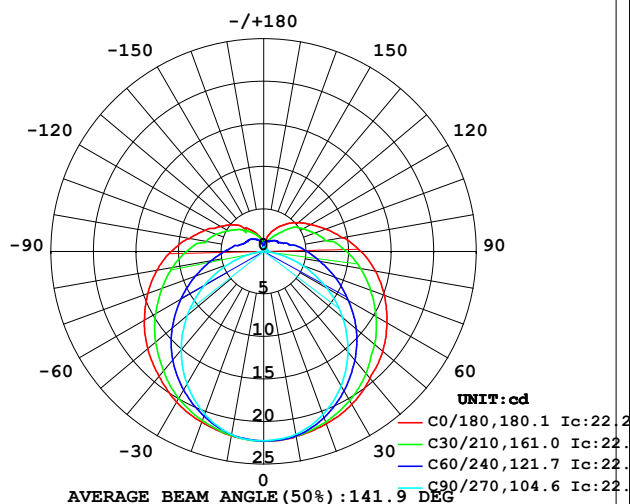


## LUMINAIRE PHOTOMETRIC TEST REPORT

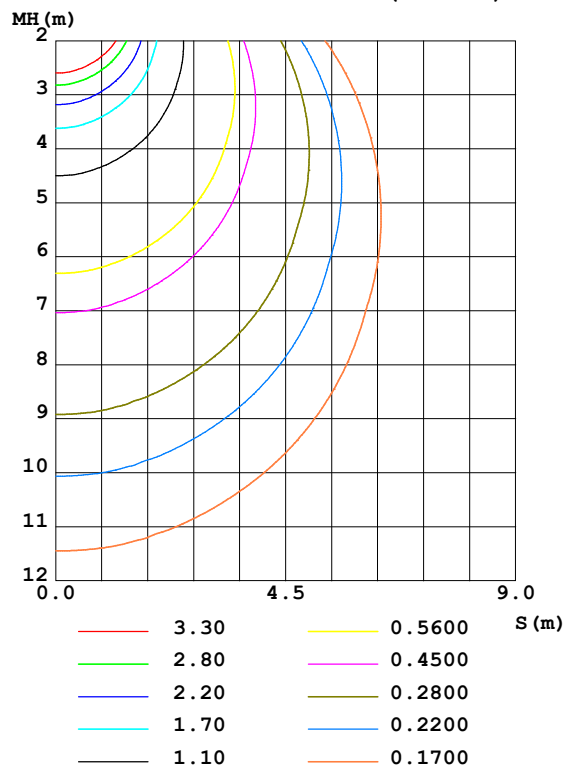
Test:U:12.00V I:0.3583A P:4.300W PF:1.000 Freq:50.00Hz Lamp Flux:106.99lx1 lm		
NAME: SF21-12V-3528-72-4500-80	TYPE: 硅胶	WEIGHT:
SPEC.:	DIM.: 28mm*11.5mm	SERIAL No.:2021120604
MFR.: OLYMPIA	SUR.:1*0.016	Shielding Angle:

DATA OF LAMP		PHOTOMETRIC DATA Eff: 24.88 lm/W			
MODEL	3528	I <sub>max</sub> (cd)	22.28	S/MH (C0/180)	1.38
NOMINAL POWER (W)	5	LOR (%)	100.0	S/MH (C90/270)	1.21
RATED VOLTAGE (V)	12	TOTAL FLUX (lm)	106.99	η UP, DN (C0-180)	10.7, 39.2
NOMINAL FLUX (lm)	106.991	CIE CLASS	SEMI-D.	η UP, DN (C180-360)	10.7, 39.3
LAMPS INSIDE	1	η up (%)	21.5	CIBSE SHR NOM	1.50
TEST VOLTAGE (V)	12	η down (%)	78.5	CIBSE SHR MAX	1.55

LUMINOUS INTENSITY DISTRIBUTION DIAGRAM



C0 PLANE ISOLUX DIAGRAM (UNIT: lx)



C Range: 0 - 360DEG  
C Interval: 30.0DEG  
Test Speed: HIGH  
Temperature: 25.3DEG  
Operators: LPC  
Test Date: 2021-12-06

γ Range: 0 - 180DEG  
γ Interval: 1.0DEG  
Test System: EVERFINE GO-2000B\_V1 SYSTEM V2.0.362  
Humidity: 65.0%  
Test Distance: 9.200m [K=1.0000]  
Remarks:

## ZONAL FLUX DIAGRAM

## ZONAL FLUX DIAGRAM:

$\gamma$	C0	C45	C90	C135	C180	C225	C270	C315	$\gamma$	$\Phi$ zone	$\Phi$ total	%lum, lamp
10	22.06	22.03	21.83	21.76	22.00	21.91	21.84	22.07	0- 10	2.110	2.110	1.97,1.97
20	21.55	21.06	20.40	20.67	21.36	20.86	20.33	21.06	10- 20	6.071	8.181	7.65,7.65
30	20.75	19.57	18.22	19.13	20.46	19.39	18.02	19.59	20- 30	9.325	17.51	16.4,16.4
40	19.44	17.70	15.40	17.17	19.16	17.50	15.11	17.84	30- 40	11.57	29.08	27.2,27.2
50	18.27	15.61	12.11	15.00	17.81	15.32	11.74	15.81	40- 50	12.67	41.74	39,39
60	16.73	13.37	8.565	12.67	16.20	12.96	8.089	13.67	50- 60	12.64	54.38	50.8,50.8
70	15.09	11.17	4.867	10.38	14.50	10.65	4.441	11.47	60- 70	11.60	65.99	61.7,61.7
80	13.34	9.145	1.531	8.351	12.74	8.571	1.289	9.433	70- 80	9.929	75.92	71,71
90	11.44	7.418	0.2915	6.674	10.87	6.853	0.2074	7.712	80- 90	8.115	84.03	78.5,78.5
100	9.377	5.637	0.3418	5.159	8.874	5.224	0.2225	5.693	90-100	6.554	90.59	84.7,84.7
110	7.762	4.629	0.3683	4.243	7.346	4.297	0.2427	4.832	100-110	5.002	95.59	89.3,89.3
120	6.389	3.717	0.3960	3.508	5.889	3.619	0.2814	4.023	110-120	3.878	99.47	93,93
130	5.293	3.173	0.4279	3.038	4.884	3.114	0.2978	3.385	120-130	2.951	102.4	95.7,95.7
140	4.253	2.264	0.4473	2.500	3.575	2.578	0.3418	2.347	130-140	2.080	104.5	97.7,97.7
150	3.243	1.641	0.4980	1.998	2.884	2.083	0.3920	1.772	140-150	1.310	105.8	98.9,98.9
160	2.253	1.316	0.5005	1.460	2.080	1.611	0.4495	1.399	150-160	0.7567	106.6	99.6,99.6
170	1.010	1.133	0.5009	0.9072	0.9190	1.088	0.4559	1.266	160-170	0.3478	106.9	99.9,99.9
180	0.5327	0.5202	0.5076	0.5151	0.5177	0.5001	0.4925	0.5177	170-180	0.0793	107.0	100,100
DEG	LUMINOUS INTENSITY:cd									UNIT:lm		

Conical surface Flux(90deg): 35.343 lm

%lum = 33.0%

%lamp = 33.0%

Conical surface Flux(120deg): 54.384 lm

%lum = 50.8%

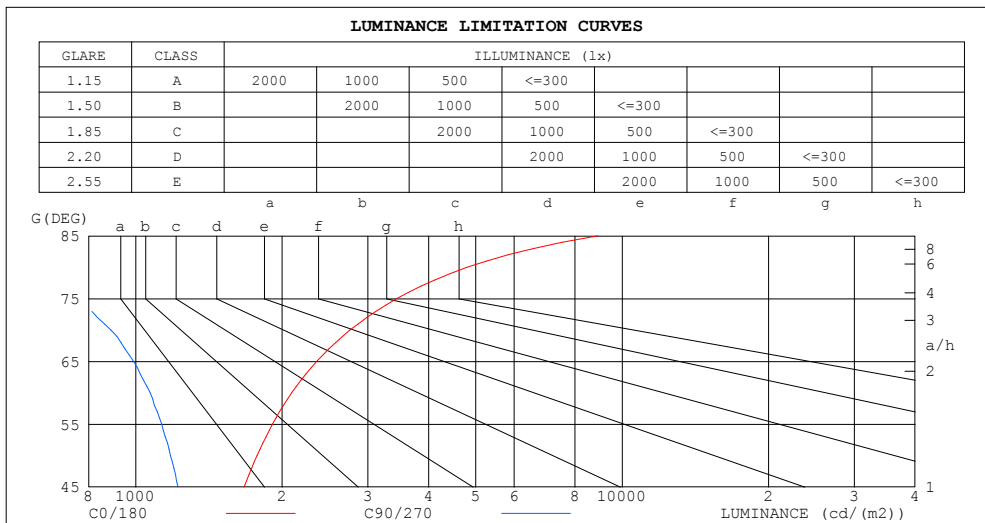
%lamp = 50.8%

C Range: 0 - 360DEG  
 C Interval: 30.0DEG  
 Test Speed: HIGH  
 Temperature:25.3DEG  
 Operators:LPC  
 Test Date:2021-12-06

$\gamma$  Range: 0 - 180DEG  
 $\gamma$  Interval: 1.0DEG  
 Test System:EVERFINE GO-2000B\_V1 SYSTEM V2.0.362  
 Humidity:65.0%  
 Test Distance:9.200m [K=1.0000]  
 Remarks:

## LUMINANCE LIMITATION CURVES

Test:U:12.00V I:0.3583A P:4.300W PF:1.000 Freq:50.00Hz Lamp Flux:106.991x1 lm		
NAME: SF21-12V-3528-72-4500-80	TYPE: 硅胶	WEIGHT:
SPEC.:	DIM.: 28mm*11.5mm	SERIAL No.:2021120604
MFR.: OLYMPIA	SUR.:1*0.016	Shielding Angle:



LUMINANCE cd/(m2)		
G (DEG)	C0/180	C90/270
85	8900	309
80	4801	551
75	3440	751
70	2758	889
65	2355	990
60	2092	1071
55	1911	1131
50	1776	1178
45	1670	1222

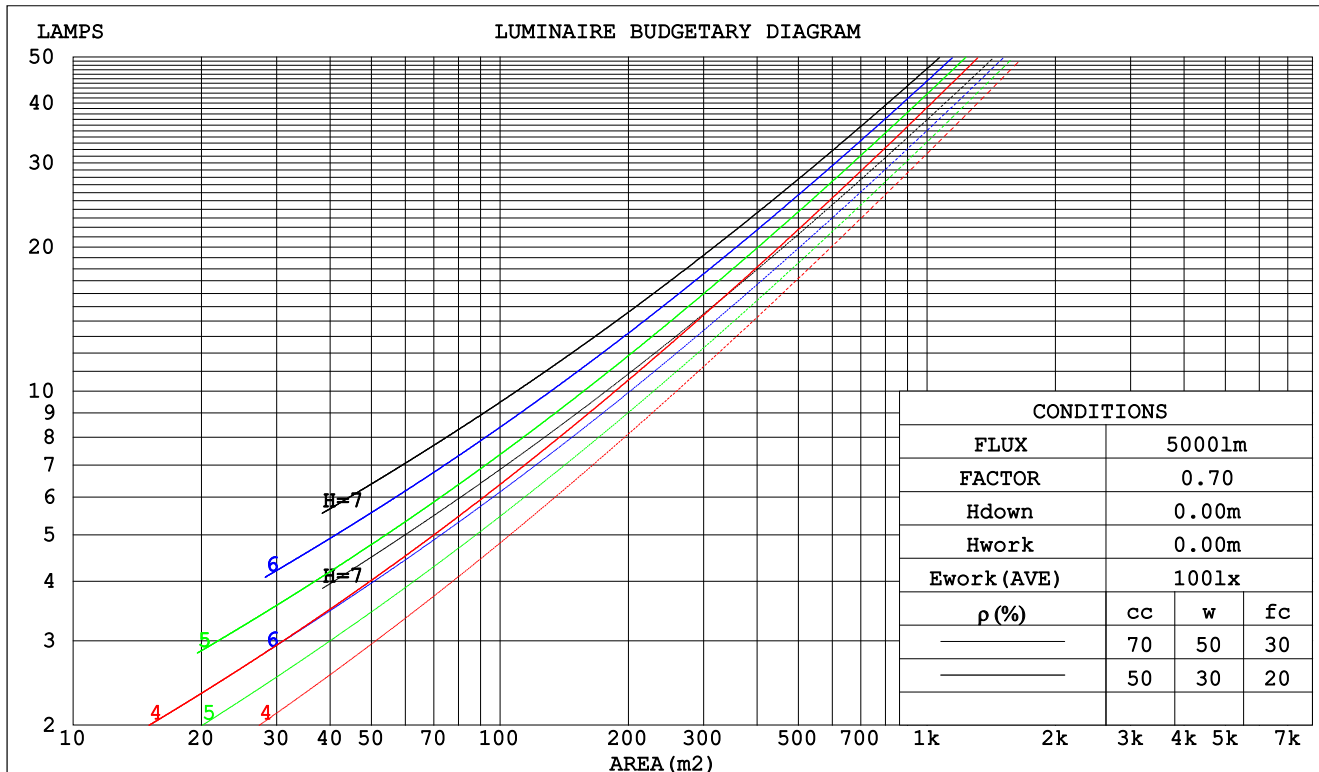
C Range: 0 - 360DEG  
C Interval: 30.0DEG  
Test Speed: HIGH  
Temperature:25.3DEG  
Operators:LPC  
Test Date:2021-12-06

γ Range: 0 - 180DEG  
γ Interval: 1.0DEG  
Test System:EVERFINE GO-2000B\_V1 SYSTEM V2.0.362  
Humidity:65.0%  
Test Distance:9.200m [K=1.0000]  
Remarks:

## CU AND LUMINAIRE BUDGETARY ESTIMATE DIAGRAM

Test:U:12.00V I:0.3583A P:4.300W PF:1.000 Freq:50.00Hz Lamp Flux:106.99lx1 lm		
NAME: SF21-12V-3528-72-4500-80	TYPE: 硅胶	WEIGHT:
SPEC.:	DIM.: 28mm*11.5mm	SERIAL No.:2021120604
MFR.: OLYMPIA	SUR.:1*0.016	Shielding Angle:

pcc	80%			70%			50%			30%			10%			0
pw	50%	30%	10%	50%	30%	10%	50%	30%	10%	50%	30%	10%	50%	30%	10%	0
pfc	20%			20%			20%			20%			20%			0
RCR	RCR:Room Cavity Ratio						Coefficients of Utilization(CU)									
0.0	1.14	1.14	1.14	1.09	1.09	1.09	.99	.99	.99	.90	.90	.90	.82	.82	.82	.79
1.0	.95	.89	.85	.90	.86	.81	.82	.78	.75	.74	.71	.69	.67	.65	.63	.59
2.0	.81	.73	.67	.77	.70	.64	.70	.64	.59	.64	.59	.55	.58	.54	.51	.47
3.0	.70	.61	.54	.67	.59	.52	.61	.54	.49	.55	.50	.45	.50	.46	.42	.38
4.0	.62	.52	.45	.59	.50	.44	.54	.46	.41	.49	.43	.38	.44	.39	.35	.32
5.0	.55	.45	.38	.52	.44	.37	.48	.40	.35	.43	.37	.32	.40	.34	.30	.27
6.0	.49	.40	.33	.47	.38	.32	.43	.36	.30	.39	.33	.28	.36	.30	.26	.24
7.0	.44	.35	.29	.42	.34	.28	.39	.32	.26	.36	.29	.25	.32	.27	.23	.21
8.0	.40	.31	.25	.39	.30	.25	.35	.28	.23	.33	.26	.22	.30	.25	.21	.18
9.0	.37	.28	.23	.35	.27	.22	.33	.26	.21	.30	.24	.20	.27	.22	.18	.16
10.0	.34	.26	.20	.32	.25	.20	.30	.23	.19	.28	.22	.18	.25	.20	.17	.15



C Range: 0 - 360DEG  
 C Interval: 30.0DEG  
 Test Speed: HIGH  
 Temperature:25.3DEG  
 Operators:LPC  
 Test Date:2021-12-06

γ Range: 0 - 180DEG  
 γ Interval: 1.0DEG  
 Test System:EVERFINE GO-2000B\_V1 SYSTEM V2.0.362  
 Humidity:65.0%  
 Test Distance:9.200m [K=1.0000]  
 Remarks:

## WEC AND CCEC

Test:U:12.00V I:0.3583A P:4.300W PF:1.000 Freq:50.00Hz Lamp Flux:106.991x1 lm		
NAME: SF21-12V-3528-72-4500-80	TYPE: 硅胶	WEIGHT:
SPEC.:	DIM.: 28mm*11.5mm	SERIAL No.:2021120604
MFR.: OLYMPIA	SUR.:1*0.016	Shielding Angle:

pcc	80%			70%			50%			30%			10%			0	
pw	50%	30%	10%	50%	30%	10%	50%	30%	10%	50%	30%	10%	50%	30%	10%	0	
pfc	20%			20%			20%			20%			20%			0	
RCR	RCR:Room Cavity Ratio						Wall Exitance Coefficients(WEC)										
0.0																	
1.0	.385	.219	.069	.371	.212	.067	.345	.198	.063	.322	.186	.060	.300	.174	.056		
2.0	.332	.182	.056	.320	.176	.054	.296	.165	.051	.275	.154	.048	.255	.144	.045		
3.0	.295	.157	.047	.283	.152	.046	.262	.142	.043	.243	.133	.041	.225	.124	.038		
4.0	.265	.138	.040	.255	.133	.039	.236	.125	.037	.218	.117	.035	.201	.109	.033		
5.0	.241	.123	.036	.232	.119	.035	.214	.111	.033	.198	.104	.031	.183	.098	.029		
6.0	.221	.111	.032	.212	.107	.031	.196	.101	.029	.181	.094	.028	.167	.088	.026		
7.0	.203	.101	.029	.196	.098	.028	.181	.092	.026	.167	.086	.025	.155	.080	.024		
8.0	.189	.092	.026	.182	.089	.025	.168	.084	.024	.155	.079	.023	.144	.074	.021		
9.0	.176	.085	.024	.169	.083	.023	.157	.078	.022	.145	.073	.021	.134	.068	.020		
10.0	.165	.079	.022	.159	.077	.021	.147	.072	.020	.136	.068	.019	.126	.063	.018		

pcc	80%			70%			50%			30%			10%			0	
pw	50%	30%	10%	50%	30%	10%	50%	30%	10%	50%	30%	10%	50%	30%	10%	0	
pfc	20%			20%			20%			20%			20%			0	
RCR	RCR:Room Cavity Ratio						Ceiling Cavity Exitance Coefficients(CCEC)										
0.0	.354	.354	.354	.303	.303	.303	.206	.206	.206	.119	.119	.119	.038	.038	.038		
1.0	.350	.320	.293	.300	.275	.252	.205	.189	.175	.118	.109	.102	.038	.035	.033		
2.0	.344	.298	.259	.294	.256	.224	.202	.177	.156	.116	.103	.092	.037	.033	.030		
3.0	.336	.281	.238	.288	.243	.206	.198	.169	.145	.114	.098	.085	.037	.032	.028		
4.0	.328	.269	.224	.282	.232	.194	.194	.162	.137	.112	.095	.081	.036	.031	.027		
5.0	.321	.259	.214	.275	.224	.186	.190	.157	.131	.110	.092	.078	.035	.030	.026		
6.0	.313	.251	.207	.269	.218	.180	.186	.152	.127	.108	.090	.076	.035	.029	.025		
7.0	.306	.245	.202	.263	.212	.176	.182	.149	.125	.106	.088	.074	.034	.029	.025		
8.0	.300	.239	.198	.258	.208	.172	.178	.146	.122	.104	.086	.073	.034	.028	.024		
9.0	.293	.234	.195	.253	.204	.170	.175	.143	.121	.102	.084	.072	.033	.028	.024		
10.0	.288	.230	.192	.248	.200	.168	.172	.141	.119	.100	.083	.071	.033	.027	.024		

C Range: 0 - 360DEG  
C Interval: 30.0DEG  
Test Speed: HIGH  
Temperature:25.3DEG  
Operators:LPC  
Test Date:2021-12-06

γ Range: 0 - 180DEG  
γ Interval: 1.0DEG  
Test System:EVERFINE GO-2000B\_V1 SYSTEM V2.0.362  
Humidity:65.0%  
Test Distance:9.200m [K=1.0000]  
Remarks:

### UGR(Unified Glare Rating) Table

Test:U:12.00V I:0.3583A P:4.300W PF:1.000 Freq:50.00Hz Lamp Flux:106.991x1 lm										
NAME: SF21-12V-3528-72-4500-80					TYPE: 硅胶			WEIGHT:		
SPEC.:					DIM.: 28mm*11.5mm			SERIAL No.:2021120604		
MFR.: OLYMPIA					SUR.:1*0.016			Shielding Angle:		
ceiling/cavity	0.7	0.7	0.5	0.5	0.3	0.7	0.7	0.5	0.5	0.3
walls	0.5	0.3	0.5	0.3	0.3	0.5	0.3	0.5	0.3	0.3
working plane	0.2	0.2	0.2	0.2	0.2	0.2	0.2	0.2	0.2	0.2
Room dimensions	Viewed crosswise					Viewed endwise				
x = 2H y = 2H	22.0	23.4	22.6	23.9	24.6	19.5	20.9	20.1	21.4	22.0
3H	24.8	26.1	25.4	26.6	27.3	21.0	22.2	21.5	22.8	23.4
4H	26.4	27.6	27.0	28.2	28.9	21.5	22.7	22.1	23.3	24.0
6H	28.1	29.2	28.7	29.8	30.6	21.8	22.9	22.5	23.6	24.3
8H	29.1	30.1	29.7	30.8	31.5	21.9	23.0	22.5	23.6	24.3
12H	30.2	31.2	30.8	31.9	32.6	21.9	23.0	22.6	23.6	24.3
4H 2H	22.6	23.8	23.2	24.4	25.0	20.8	22.0	21.4	22.6	23.2
3H	25.6	26.7	26.3	27.3	28.0	22.5	23.6	23.2	24.2	24.9
4H	27.4	28.3	28.1	29.0	29.8	23.3	24.3	24.0	24.9	25.7
6H	29.3	30.2	30.0	30.9	31.7	23.9	24.7	24.6	25.4	26.2
8H	30.4	31.2	31.1	31.9	32.7	24.1	24.9	24.8	25.6	26.4
12H	31.7	32.4	32.4	33.1	33.9	24.2	24.9	24.9	25.7	26.5
8H 4H	27.7	28.5	28.4	29.2	30.0	24.6	25.3	25.3	26.0	26.9
6H	30.0	30.7	30.7	31.4	32.2	25.6	26.3	26.3	27.0	27.9
8H	31.3	31.9	32.0	32.6	33.5	26.1	26.7	26.8	27.4	28.3
12H	32.8	33.3	33.6	34.1	35.0	26.4	26.9	27.2	27.7	28.6
12H 4H	27.7	28.5	28.5	29.2	30.0	25.0	25.7	25.7	26.4	27.3
6H	30.1	30.7	30.9	31.4	32.3	26.3	26.9	27.0	27.6	28.5
8H	31.5	32.0	32.3	32.8	33.7	27.0	27.5	27.7	28.2	29.2
Variations with the observer position at spacings:										
S = 1.0H	+ 0.1 / - 0.1					+ 0.1 / - 0.1				
1.5H	+ 0.2 / - 0.3					+ 0.2 / - 0.3				
2.0H	+ 0.2 / - 0.3					+ 0.2 / - 0.4				

CIE Pub.117, 107.0 lm Total Lamp Luminous Flux Correct (8log(F/F0) = -7.8)

C Range: 0 - 360DEG  
C Interval: 30.0DEG  
Test Speed: HIGH  
Temperature:25.3DEG  
Operators:LPC  
Test Date:2021-12-06

γ Range: 0 - 180DEG  
γ Interval: 1.0DEG  
Test System:EVERFINE GO-2000B\_V1 SYSTEM V2.0.362  
Humidity:65.0%  
Test Distance:9.200m [K=1.0000]  
Remarks:

## UTILIZATION FACTORS TABLE

Test:U:12.00V I:0.3583A P:4.300W PF:1.000 Freq:50.00Hz Lamp Flux:106.991x1 lm		
NAME: SF21-12V-3528-72-4500-80	TYPE: 硅胶	WEIGHT:
SPEC.:	DIM.: 28mm*11.5mm	SERIAL No.:2021120604
MFR.: OLYMPIA	SUR.:1*0.016	Shielding Angle:

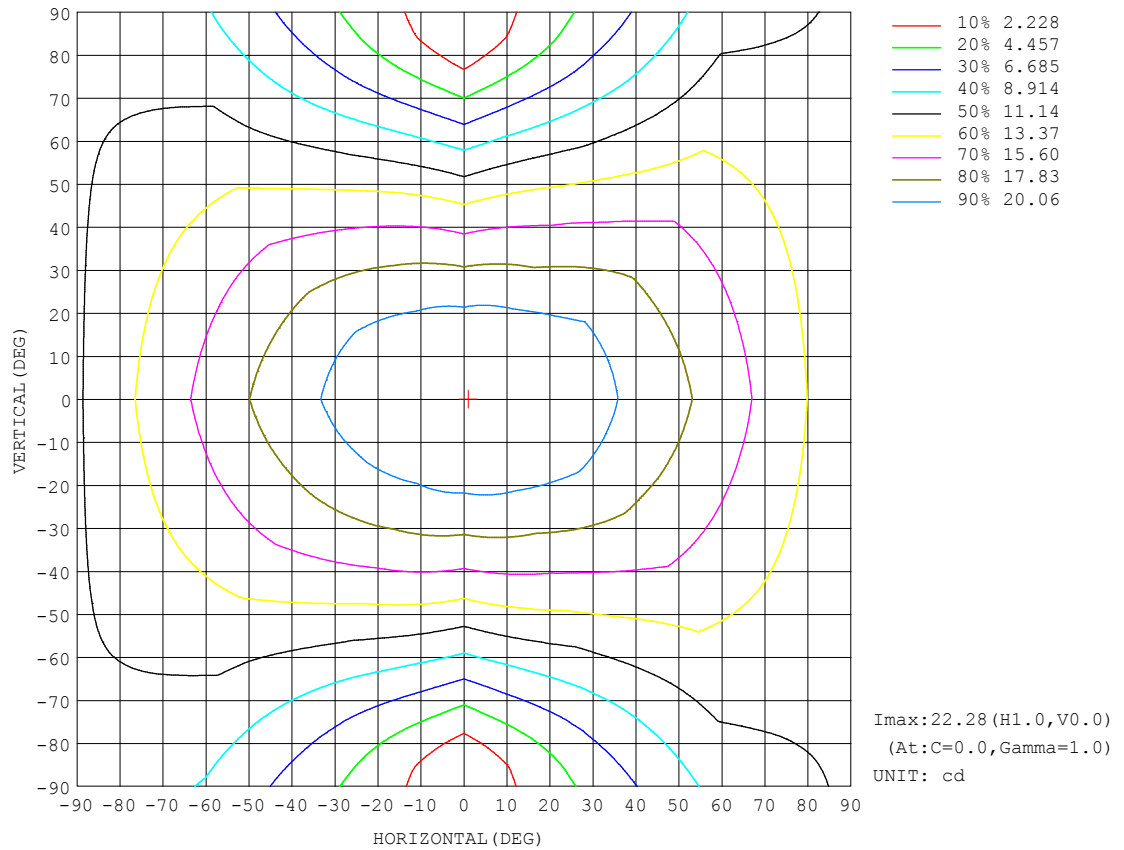
REFLECTANCE										
Ceiling	0.8	0.8	0.8	0.7	0.7	0.7	0.5	0.5	0.5	0
Walls	0.7	0.5	0.3	0.7	0.5	0.3	0.7	0.5	0.3	0
Working plane	0.2	0.2	0.2	0.2	0.2	0.2	0.2	0.2	0.2	0
ROOM INDEX	UTILIZATION FACTORS (PERCENT) $k(RI) \times RCR = 5$									
$k = 0.60$	47	34	27	46	34	27	43	33	26	20
0.80	56	43	35	54	42	34	51	40	33	25
1.00	64	51	42	61	49	41	58	50	40	31
1.25	70	58	49	68	56	48	63	53	46	36
1.50	76	63	55	73	61	53	67	58	51	40
2.00	83	72	63	80	69	62	73	65	58	46
2.50	87	77	69	84	74	67	77	69	63	50
3.00	91	82	74	87	79	72	80	73	67	53
4.00	96	88	81	92	84	78	84	78	73	58
5.00	99	92	86	94	88	83	86	81	77	61
ROOM INDEX	UF (total)									Direct
According to DIN EN 13032-2 2004			Suspended					SHRNOM = 1.25		

C Range: 0 - 360DEG  
 C Interval: 30.0DEG  
 Test Speed: HIGH  
 Temperature: 25.3DEG  
 Operators: LPC  
 Test Date: 2021-12-06

γ Range: 0 - 180DEG  
 γ Interval: 1.0DEG  
 Test System: EVERFINE GO-2000B\_V1 SYSTEM V2.0.362  
 Humidity: 65.0%  
 Test Distance: 9.200m [K=1.0000]  
 Remarks:

## ISOCANDELA DIAGRAM

Test:U:12.00V I:0.3583A P:4.300W PF:1.000 Freq:50.00Hz Lamp Flux:106.991x1 lm		
NAME: SF21-12V-3528-72-4500-80	TYPE: 硅胶	WEIGHT:
SPEC.:	DIM.: 28mm*11.5mm	SERIAL No.:2021120604
MFR.: OLYMPIA	SUR.:1*0.016	Shielding Angle:



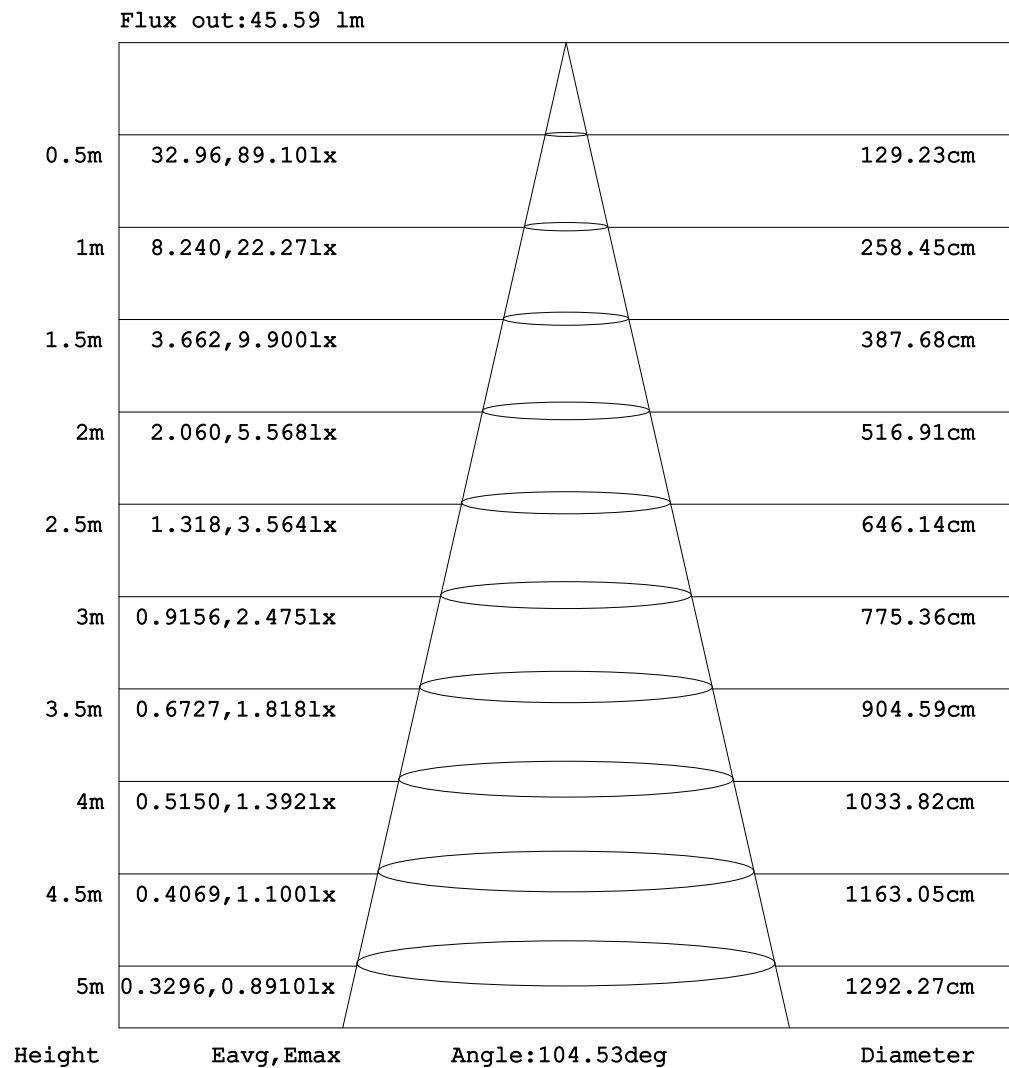
C Range: 0 - 360DEG  
C Interval: 30.0DEG  
Test Speed: HIGH  
Temperature:25.3DEG  
Operators:LPC  
Test Date:2021-12-06

$\gamma$  Range: 0 - 180DEG  
 $\gamma$  Interval: 1.0DEG  
Test System:EVERFINE GO-2000B\_V1 SYSTEM V2.0.362  
Humidity:65.0%  
Test Distance:9.200m [K=1.0000]  
Remarks:



## AAI Figure

Test:U:12.00V I:0.3583A P:4.300W PF:1.000 Freq:50.00Hz Lamp Flux:106.991x1 lm		
NAME: SF21-12V-3528-72-4500-80	TYPE: 硅胶	WEIGHT:
SPEC.:	DIM.: 28mm*11.5mm	SERIAL No.:2021120604
MFR.: OLYMPIA	SUR.:1*0.016	Shielding Angle:



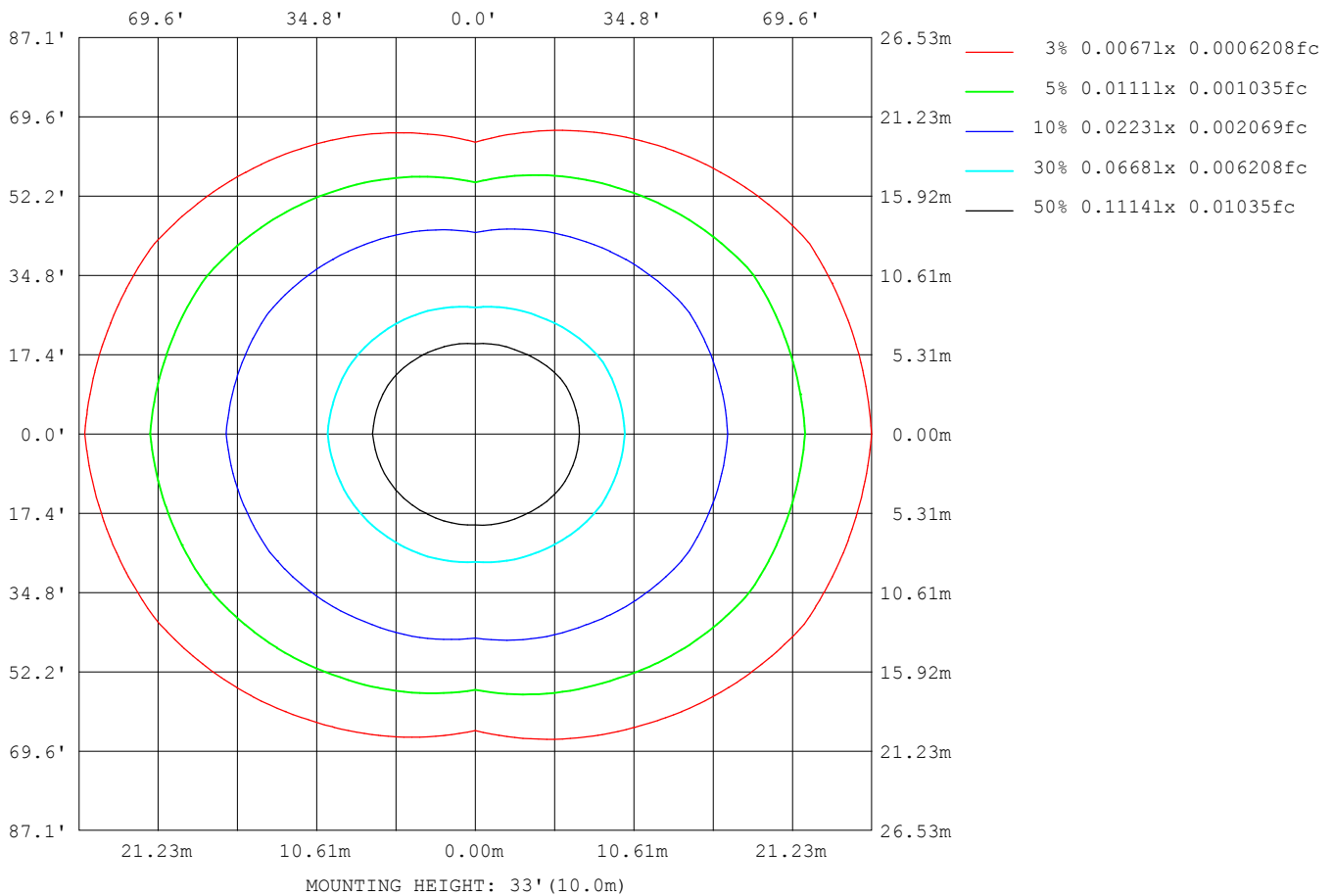
Note: The Curves indicate the illuminated area and the average illumination when the luminaire is at different distance.

C Range: 0 - 360DEG  
 C Interval: 30.0DEG  
 Test Speed: HIGH  
 Temperature: 25.3DEG  
 Operators: LPC  
 Test Date: 2021-12-06

γ Range: 0 - 180DEG  
 γ Interval: 1.0DEG  
 Test System: EVERFINE GO-2000B\_V1 SYSTEM V2.0.362  
 Humidity: 65.0%  
 Test Distance: 9.200m [K=1.0000]  
 Remarks:

## ISOLUX DIAGRAM

Test:U:12.00V I:0.3583A P:4.300W PF:1.000 Freq:50.00Hz Lamp Flux:106.99lx1 lm		
NAME: SF21-12V-3528-72-4500-80	TYPE: 硅胶	WEIGHT:
SPEC.:	DIM.: 28mm*11.5mm	SERIAL No.:2021120604
MFR.: OLYMPIA	SUR.:1*0.016	Shielding Angle:



C Range: 0 - 360DEG  
C Interval: 30.0DEG  
Test Speed: HIGH  
Temperature:25.3DEG  
Operators:LPC  
Test Date:2021-12-06

$\gamma$  Range: 0 - 180DEG  
 $\gamma$  Interval: 1.0DEG  
Test System:EVERFINE GO-2000B\_V1 SYSTEM V2.0.362  
Humidity:65.0%  
Test Distance:9.200m [K=1.0000]  
Remarks:

## LED Avg.L Report

Test:U:12.00V I:0.3583A P:4.300W PF:1.000 Freq:50.00Hz Lamp Flux:106.991x1 lm		
NAME: SF21-12V-3528-72-4500-80	TYPE:硅胶	WEIGHT:
SPEC.:	DIM.: 28mm*11.5mm	SERIAL No.:2021120604
MFR.: OLYMPIA	SUR.:1*0.016	Shielding Angle:

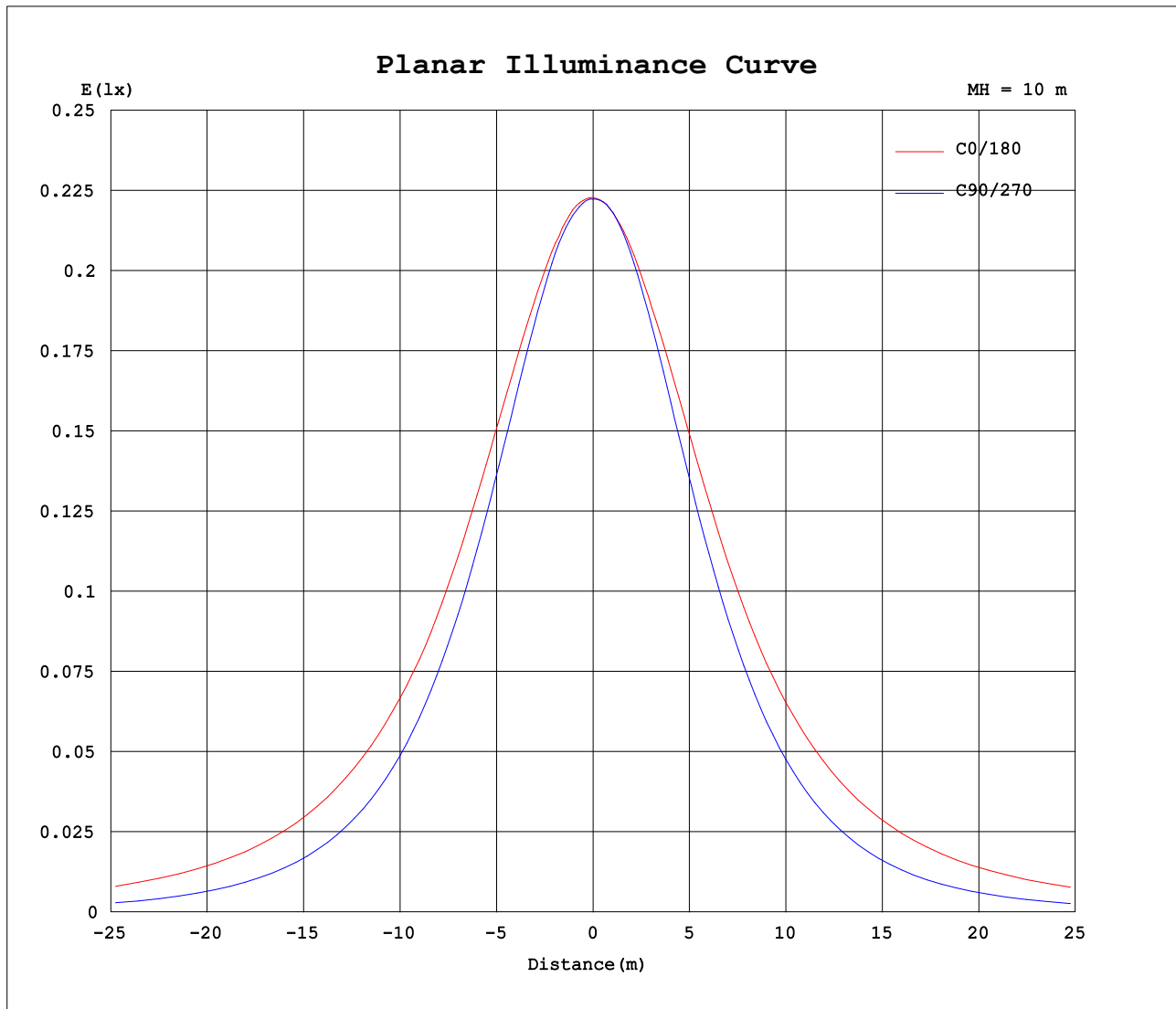
AvgL	cd/m2
L_0~180 (65) av	2313
L_0~180 (75) av	3366
L_0~180 (85) av	8687
L_90~270 (65) av	958
L_90~270 (75) av	708
L_90~270 (85) av	256
L_45 (65) av	1796
L_45 (75) av	2423
L_45 (85) av	5882

Standard: GB/T 29293-2012

C Range: 0 - 360DEG  
 C Interval: 30.0DEG  
 Test Speed: HIGH  
 Temperature:25.3DEG  
 Operators:LPC  
 Test Date:2021-12-06

γ Range: 0 - 180DEG  
 γ Interval: 1.0DEG  
 Test System:EVERFINE GO-2000B\_V1 SYSTEM V2.0.362  
 Humidity:65.0%  
 Test Distance:9.200m [K=1.0000]  
 Remarks:

## Planar Illuminance Curve



C Range: 0 - 360DEG  
C Interval: 30.0DEG  
Test Speed: HIGH  
Temperature: 25.3DEG  
Operators: LPC  
Test Date: 2021-12-06

$\gamma$  Range: 0 - 180DEG  
 $\gamma$  Interval: 1.0DEG  
Test System: EVERFINE GO-2000B\_V1 SYSTEM V2.0.362  
Humidity: 65.0%  
Test Distance: 9.200m [K=1.0000]  
Remarks:

## LUMINOUS DISTRIBUTION INTENSITY DATA

Test:U:12.00V I:0.3583A P:4.300W PF:1.000 Freq:50.00Hz Lamp Flux:106.991x1 lm		
NAME: SF21-12V-3528-72-4500-80	TYPE: 硅胶	WEIGHT:
SPEC.:	DIM.: 28mm*11.5mm	SERIAL No.:2021120604
MFR.: OLYMPIA	SUR.:1*0.016	Shielding Angle:

Table--1

UNIT: cd

C (DEG) γ (DEG)	0	30	60	90	120	150	180	210	240	270	300	330						
0	22.3	22.3	22.3	22.2	22.2	22.2	22.3	22.3	22.3	22.2	22.2	22.2						
5	22.3	22.2	22.3	22.1	22.1	22.0	22.2	22.2	22.1	22.2	22.2	22.2						
10	22.1	22.0	22.0	21.8	21.8	21.7	22.0	22.0	21.9	21.8	22.0	22.2						
15	21.8	21.7	21.5	21.2	21.2	21.3	21.7	21.6	21.3	21.2	21.5	21.9						
20	21.5	21.3	20.8	20.4	20.5	20.9	21.4	21.1	20.6	20.3	20.7	21.4						
25	21.2	20.8	19.9	19.4	19.6	20.3	21.0	20.6	19.7	19.3	19.8	20.9						
30	20.7	20.2	18.9	18.2	18.7	19.6	20.5	20.0	18.8	18.0	18.8	20.4						
35	20.2	19.5	17.8	16.9	17.6	18.8	19.8	19.2	17.8	16.6	17.7	19.8						
40	19.4	18.7	16.7	15.4	16.4	17.9	19.2	18.3	16.6	15.1	16.6	19.1						
45	18.9	17.8	15.5	13.8	15.2	17.1	18.5	17.5	15.4	13.5	15.5	18.2						
50	18.3	17.0	14.2	12.1	13.8	16.2	17.8	16.6	14.1	11.7	14.3	17.3						
55	17.5	16.2	12.9	10.4	12.4	15.2	17.0	15.7	12.6	9.94	13.0	16.6						
60	16.7	15.3	11.5	8.57	11.1	14.3	16.2	14.7	11.2	8.09	11.7	15.7						
65	15.9	14.3	10.2	6.70	9.74	13.3	15.4	13.7	9.89	6.27	10.3	14.7						
70	15.1	13.4	8.96	4.87	8.44	12.3	14.5	12.7	8.57	4.44	9.11	13.8						
75	14.2	12.5	7.76	3.11	7.24	11.4	13.6	11.8	7.33	2.75	7.90	12.9						
80	13.3	11.6	6.72	1.53	6.20	10.5	12.7	10.9	6.25	1.29	6.83	12.0						
85	12.4	10.7	5.83	0.43	5.34	9.61	11.8	9.99	5.35	0.28	5.92	11.2						
90	11.4	9.74	5.09	0.29	4.62	8.73	10.9	9.09	4.61	0.21	5.16	10.3						
95	10.5	8.88	4.50	0.31	4.08	7.92	9.94	8.24	4.02	0.21	4.47	9.36						
100	9.38	7.37	3.91	0.34	3.70	6.61	8.87	6.84	3.61	0.22	3.79	7.60						
105	8.55	6.91	3.10	0.36	2.82	6.22	8.07	6.44	2.99	0.23	3.37	7.13						
110	7.76	6.35	2.91	0.37	2.71	5.77	7.35	5.96	2.63	0.24	3.22	6.44						
115	7.02	5.81	2.46	0.38	2.52	5.02	6.45	5.37	2.41	0.25	2.83	5.94						
120	6.39	5.36	2.08	0.40	2.39	4.62	5.89	4.88	2.36	0.28	2.65	5.39						
125	5.83	4.94	2.00	0.41	2.28	4.26	5.38	4.42	2.29	0.29	2.38	4.97						
130	5.29	4.38	1.97	0.43	2.18	3.90	4.88	4.03	2.20	0.30	2.13	4.64						
135	4.78	3.57	1.84	0.43	2.06	3.48	4.39	3.65	2.06	0.31	1.85	3.89						
140	4.25	2.85	1.68	0.45	1.89	3.12	3.57	3.25	1.91	0.34	1.61	3.08						
145	3.75	2.34	1.54	0.46	1.71	2.75	3.34	2.87	1.76	0.36	1.48	2.58						
150	3.24	1.89	1.39	0.50	1.59	2.41	2.88	2.51	1.65	0.39	1.32	2.23						
155	2.76	1.52	1.35	0.50	1.40	2.11	2.50	2.22	1.49	0.44	1.34	1.85						
160	2.25	1.29	1.34	0.50	1.19	1.73	2.08	1.92	1.31	0.45	1.30	1.49						
165	1.84	1.13	1.30	0.50	0.93	1.44	1.80	1.63	1.09	0.45	1.26	1.33						
170	1.01	1.08	1.19	0.50	0.76	1.05	0.92	1.30	0.88	0.46	1.23	1.30						
175	0.82	0.94	0.88	0.50	0.54	0.58	0.69	0.91	0.66	0.47	0.99	1.22						
180	0.53	0.52	0.52	0.51	0.51	0.52	0.52	0.52	0.48	0.49	0.50	0.53						

C Range: 0 - 360DEG  
C Interval: 30.0DEG  
Test Speed: HIGH  
Temperature:25.3DEG  
Operators:LPC  
Test Date:2021-12-06

γ Range: 0 - 180DEG  
γ Interval: 1.0DEG  
Test System:EVERFINE GO-2000B\_V1 SYSTEM V2.0.362  
Humidity:65.0%  
Test Distance:9.200m [K=1.0000]  
Remarks:

## Photometric Data Table [cd]

G/C	0.0	30.0	60.0	90.0	120.0	150.0	180.0	210.0	240.0	270.0
0.0	22.27	22.26	22.27	22.23	22.23	22.20	22.27	22.26	22.27	22.23
3.0	22.28	22.26	22.26	22.19	22.19	22.11	22.23	22.26	22.23	22.24
6.0	22.25	22.20	22.22	22.08	22.06	21.99	22.15	22.17	22.11	22.15
9.0	22.16	22.09	22.08	21.91	21.85	21.82	22.04	22.03	21.94	21.94
12.0	22.01	21.94	21.86	21.61	21.58	21.58	21.88	21.83	21.67	21.61
15.0	21.84	21.74	21.50	21.22	21.20	21.32	21.68	21.59	21.31	21.19
18.0	21.67	21.49	21.09	20.75	20.78	21.07	21.49	21.32	20.90	20.71
21.0	21.49	21.25	20.62	20.22	20.29	20.78	21.29	21.03	20.44	20.13
24.0	21.28	20.92	20.10	19.60	19.77	20.44	21.06	20.72	19.93	19.49
27.0	21.03	20.58	19.54	18.94	19.23	20.05	20.78	20.37	19.39	18.79
30.0	20.75	20.23	18.92	18.22	18.66	19.60	20.46	19.97	18.81	18.02
33.0	20.41	19.82	18.27	17.42	18.03	19.13	20.10	19.53	18.21	17.20
36.0	20.03	19.38	17.59	16.59	17.37	18.60	19.69	19.04	17.56	16.34
39.0	19.60	18.90	16.91	15.72	16.67	18.10	19.28	18.52	16.88	15.41
42.0	19.19	18.37	16.21	14.79	15.94	17.57	18.89	17.98	16.16	14.45
45.0	18.90	17.78	15.49	13.82	15.16	17.07	18.49	17.45	15.39	13.47
48.0	18.53	17.31	14.73	12.83	14.36	16.56	18.10	16.94	14.60	12.43
51.0	18.13	16.86	13.95	11.80	13.54	16.01	17.65	16.41	13.78	11.38
54.0	17.69	16.35	13.15	10.71	12.70	15.43	17.19	15.85	12.93	10.32
57.0	17.21	15.81	12.33	9.646	11.88	14.84	16.71	15.27	12.08	9.215
60.0	16.73	15.26	11.49	8.565	11.08	14.27	16.20	14.66	11.25	8.089
63.0	16.25	14.67	10.70	7.425	10.28	13.66	15.69	14.08	10.44	6.999
66.0	15.77	14.12	9.954	6.319	9.482	13.08	15.18	13.49	9.626	5.893
69.0	15.26	13.56	9.210	5.244	8.697	12.51	14.67	12.92	8.827	4.812
72.0	14.76	13.01	8.477	4.123	7.944	11.94	14.16	12.35	8.053	3.758
75.0	14.24	12.48	7.757	3.108	7.240	11.41	13.63	11.80	7.330	2.752
78.0	13.70	11.92	7.104	2.128	6.601	10.85	13.10	11.25	6.662	1.817
81.0	13.16	11.39	6.525	1.270	6.018	10.32	12.56	10.71	6.059	1.032
84.0	12.60	10.84	5.993	0.6164	5.500	9.793	12.00	10.17	5.511	0.3790
87.0	12.02	10.30	5.520	0.3014	5.037	9.251	11.45	9.621	5.034	0.2263
90.0	11.44	9.743	5.093	0.2915	4.615	8.733	10.87	9.093	4.612	0.2074
93.0	10.86	9.221	4.715	0.3015	4.263	8.241	10.31	8.565	4.230	0.2092
96.0	10.30	8.713	4.404	0.3116	3.987	7.768	9.763	8.078	3.934	0.2110
99.0	9.752	7.807	4.032	0.3268	3.765	7.204	9.169	7.610	3.678	0.2197
102.0	9.043	7.236	3.645	0.3537	3.539	6.478	8.552	6.740	3.489	0.2273
105.0	8.550	6.909	3.102	0.3592	2.816	6.221	8.070	6.439	2.994	0.2331
108.0	8.068	6.593	3.031	0.3646	2.729	5.945	7.622	6.152	2.748	0.2389
111.0	7.611	6.241	2.731	0.3701	2.689	5.557	7.215	5.786	2.593	0.2446
114.0	7.163	5.924	2.488	0.3760	2.549	5.120	6.662	5.494	2.447	0.2504
117.0	6.751	5.623	2.312	0.3880	2.473	4.819	6.220	5.157	2.382	0.2562
120.0	6.389	5.357	2.077	0.3960	2.392	4.623	5.889	4.876	2.362	0.2814
123.0	6.047	5.116	2.005	0.4021	2.299	4.392	5.582	4.599	2.292	0.2851
126.0	5.720	4.859	1.990	0.4107	2.277	4.181	5.276	4.338	2.261	0.2905
129.0	5.399	4.577	1.975	0.4236	2.237	3.960	4.984	4.097	2.211	0.2960
132.0	5.087	4.045	1.915	0.4273	2.106	3.734	4.688	3.896	2.141	0.3015
135.0	4.776	3.572	1.845	0.4333	2.056	3.482	4.386	3.649	2.060	0.3116
138.0	4.454	3.030	1.744	0.4423	1.975	3.256	4.057	3.345	1.970	0.3266
141.0	4.157	2.708	1.644	0.4524	1.845	3.045	3.295	3.177	1.894	0.3567
144.0	3.846	2.437	1.573	0.4574	1.734	2.844	3.412	2.920	1.804	0.3598
147.0	3.544	2.135	1.483	0.4825	1.669	2.603	3.105	2.730	1.718	0.3668
150.0	3.243	1.889	1.392	0.4980	1.588	2.407	2.884	2.513	1.653	0.3920
153.0	2.946	1.648	1.350	0.4987	1.468	2.226	2.663	2.323	1.567	0.4170
156.0	2.670	1.472	1.346	0.4995	1.372	2.040	2.437	2.162	1.452	0.4472
159.0	2.378	1.331	1.342	0.5003	1.242	1.804	2.205	1.981	1.341	0.4489
162.0	2.096	1.181	1.338	0.5010	1.106	1.648	1.969	1.840	1.231	0.4506
165.0	1.840	1.132	1.302	0.5018	0.9308	1.437	1.798	1.634	1.090	0.4524
168.0	1.066	1.097	1.227	0.5018	0.8649	1.226	1.005	1.438	0.9794	0.4545
171.0	0.9853	1.075	1.161	0.5004	0.6544	0.9794	0.8539	1.212	0.8390	0.4578
174.0	0.8599	0.9647	1.006	0.4990	0.5464	0.7472	0.7382	0.9757	0.7379	0.4636
177.0	0.7393	0.6923	0.5507	0.4975	0.5278	0.5177	0.6329	0.8047	0.4825	0.4674
180.0	0.5327	0.5227	0.5177	0.5076	0.5126	0.5177	0.5177	0.5177	0.4825	0.4925
G/C	300.0	330.0								
0.0	22.23	22.20								
3.0	22.23	22.25								
6.0	22.15	22.22								
9.0	22.03	22.19								
12.0	21.78	22.09								
15.0	21.45	21.89								
18.0	21.04	21.61								
21.0	20.56	21.30								
24.0	20.02	21.00								
27.0	19.43	20.70								
30.0	18.78	20.39								

C Range: 0 - 360DEG  
 C Interval: 30.0DEG  
 Test Speed: HIGH  
 Temperature: 25.3DEG  
 Operators: LPC  
 Test Date: 2021-12-06

γ Range: 0 - 180DEG  
 γ Interval: 1.0DEG  
 Test System: EVERFINE GO-2000B\_V1 SYSTEM V2.0.362  
 Humidity: 65.0%  
 Test Distance: 9.200m [K=1.0000]  
 Remarks:

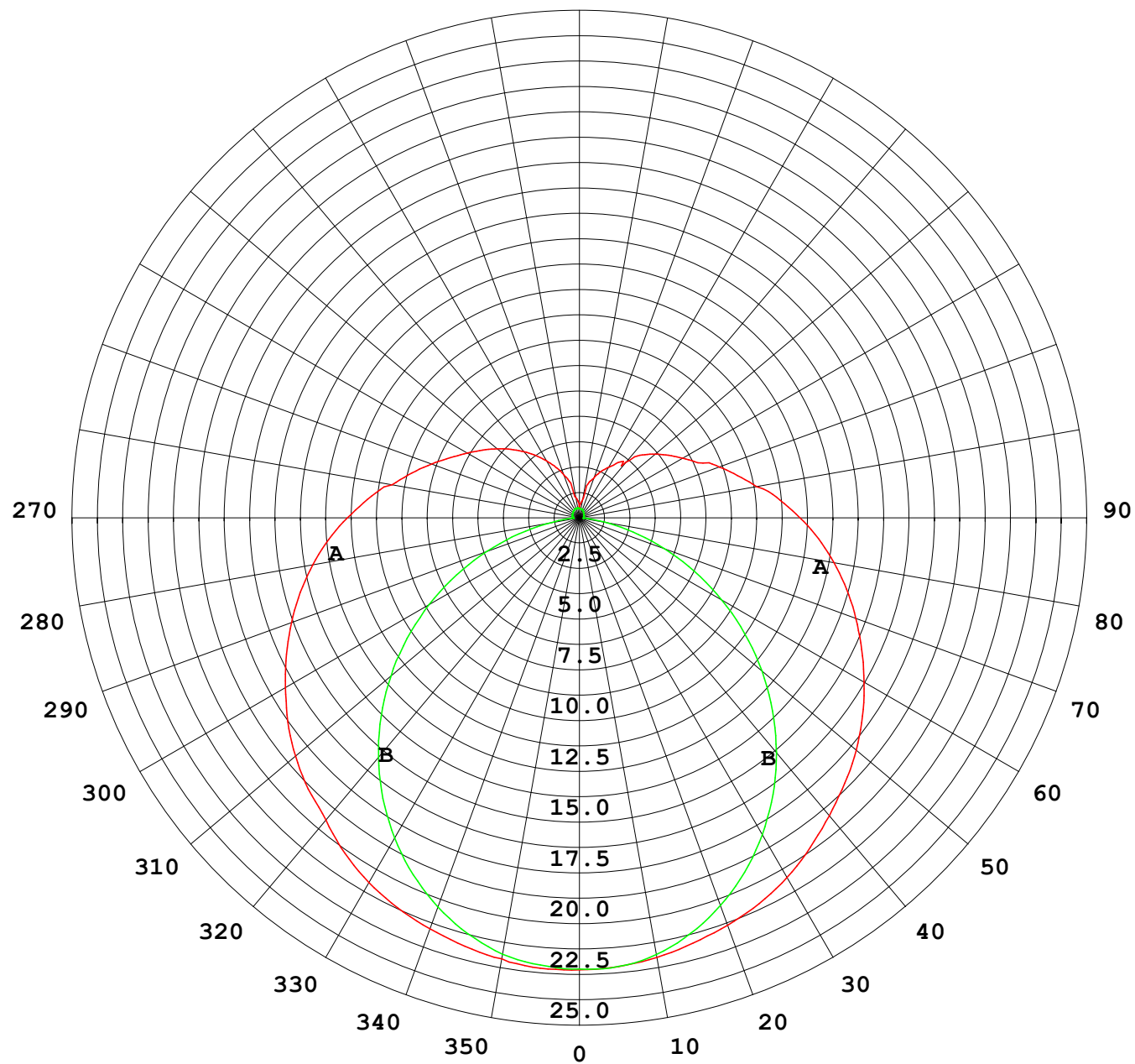
## Photometric Data Table [cd]

33.0	18.12	20.05
36.0	17.46	19.66
39.0	16.82	19.22
42.0	16.16	18.74
45.0	15.49	18.21
48.0	14.81	17.63
51.0	14.06	17.15
54.0	13.29	16.72
57.0	12.49	16.20
60.0	11.67	15.67
63.0	10.83	15.13
66.0	10.09	14.56
69.0	9.350	14.01
72.0	8.626	13.47
75.0	7.903	12.93
78.0	7.235	12.39
81.0	6.642	11.88
84.0	6.094	11.34
87.0	5.597	10.79
90.0	5.165	10.26
93.0	4.768	9.716
96.0	4.285	9.184
99.0	3.889	8.132
102.0	3.668	7.473
105.0	3.367	7.134
108.0	3.331	6.625
111.0	3.180	6.358
114.0	3.063	6.042
117.0	2.854	5.740
120.0	2.653	5.394
123.0	2.492	5.117
126.0	2.331	4.906
129.0	2.176	4.705
132.0	2.015	4.359
135.0	1.854	3.886
138.0	1.728	3.294
141.0	1.588	2.986
144.0	1.507	2.644
147.0	1.407	2.423
150.0	1.317	2.227
153.0	1.337	2.021
156.0	1.334	1.775
159.0	1.312	1.579
162.0	1.282	1.388
165.0	1.261	1.327
168.0	1.241	1.312
171.0	1.201	1.297
174.0	1.129	1.242
177.0	0.6319	1.032
180.0	0.5026	0.5327

C Range: 0 - 360DEG  
C Interval: 30.0DEG  
Test Speed: HIGH  
Temperature:25.3DEG  
Operators:LPC  
Test Date:2021-12-06

γ Range: 0 - 180DEG  
γ Interval: 1.0DEG  
Test System:EVERFINE GO-2000B\_V1 SYSTEM V2.0.362  
Humidity:65.0%  
Test Distance:9.200m [K=1.0000]  
Remarks:

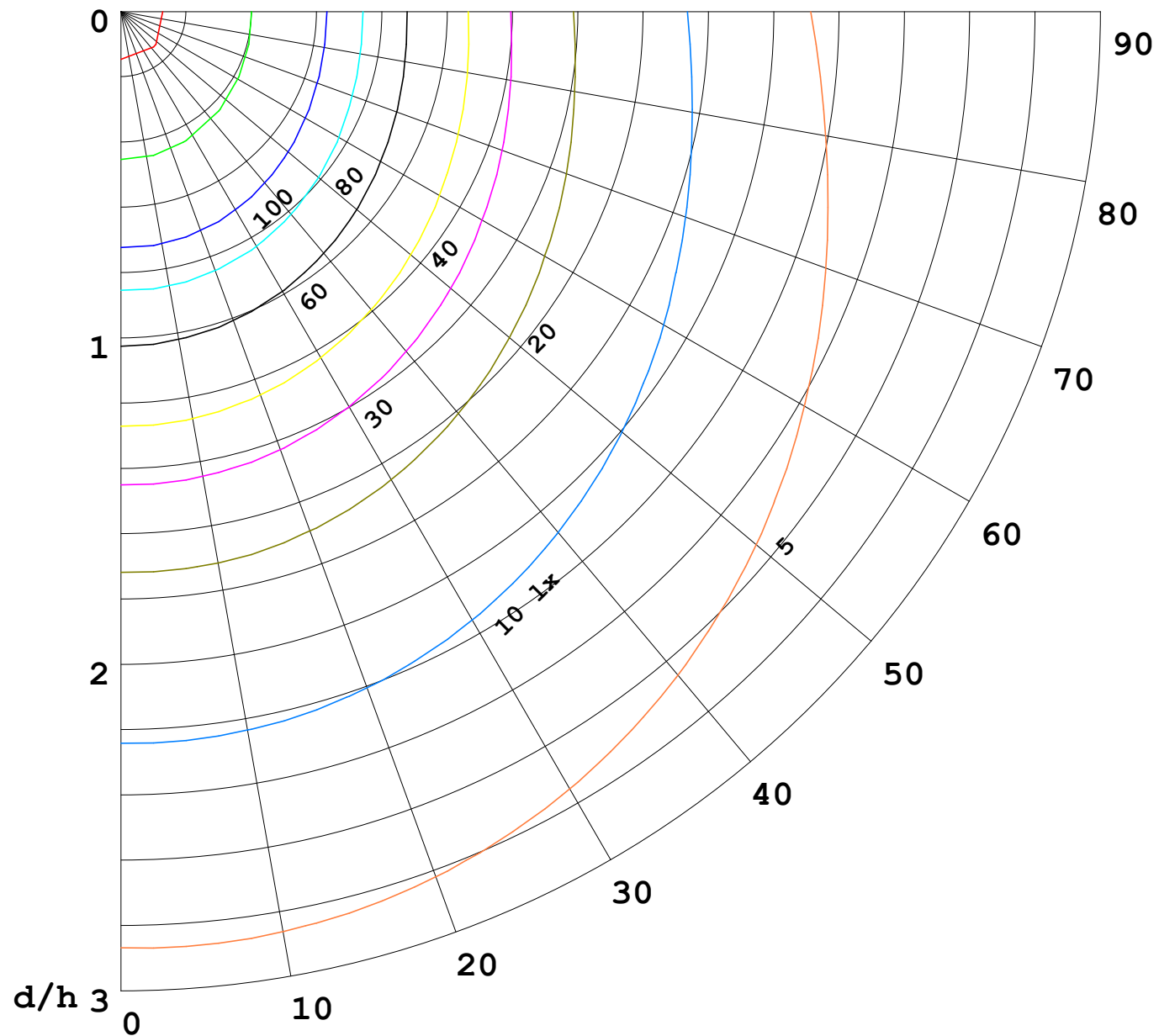
I (cd)





1000 lm

$\kappa = 1$



F = 5000 lm  
 K = 0.7  
 Hcc = 0.0 m  
 Hfc = 0.0 m  
 Eave = 100 lx

	Pcc	Pw	Pfc
—	70	50	30
—	50	30	20

