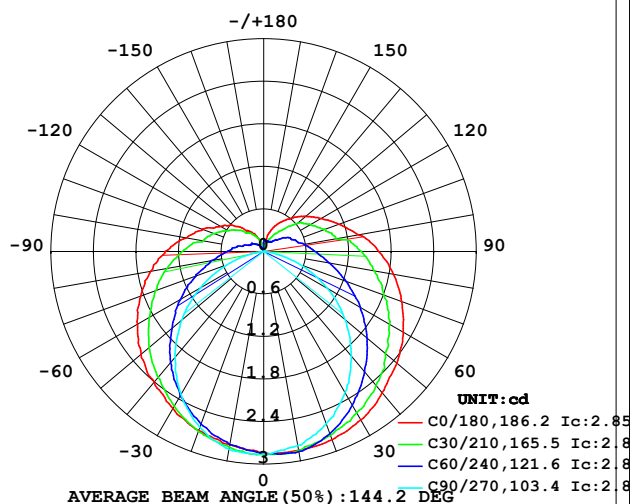


LUMINAIRE PHOTOMETRIC TEST REPORT

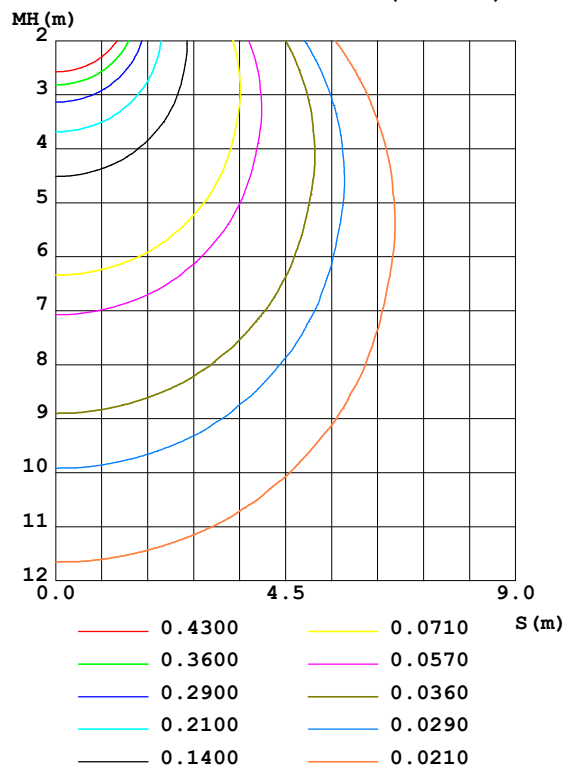
Test:U:12.00V I:0.4240A P:5.088W PF:1.000 Freq:50.00Hz Lamp Flux:13.8118x1 lm		
NAME: SF21-12V-3528-72-B	TYPE: 硅胶	WEIGHT:
SPEC.:	DIM.: 28mm*11.5mm	SERIAL No.:2021120606
MFR.: OLYMPIA	SUR.:1*0.016	Shielding Angle:

DATA OF LAMP		PHOTOMETRIC DATA				Eff: 2.71 lm/W
MODEL	3528	I _{max} (cd)	2.875	S/MH (C0/180)	1.34	
NOMINAL POWER (W)	5	LOR (%)	100.0	S/MH (C90/270)	1.22	
RATED VOLTAGE (V)	12	TOTAL FLUX (lm)	13.812	η UP, DN (C0-180)	10.8, 39.6	
NOMINAL FLUX (lm)	13.8118	CIE CLASS	SEMI-D.	η UP, DN (C180-360)	10.4, 39.3	
LAMPS INSIDE	1	η up (%)	21.2	CIBSE SHR NOM	1.50	
TEST VOLTAGE (V)	12	η down (%)	78.8	CIBSE SHR MAX	1.55	

LUMINOUS INTENSITY DISTRIBUTION DIAGRAM



C0 PLANE ISOLUX DIAGRAM (UNIT: lx)



C Range: 0 - 360DEG
C Interval: 30.0DEG
Test Speed: HIGH
Temperature: 25.3DEG
Operators: LPC
Test Date: 2021-12-06

γ Range: 0 - 180DEG
γ Interval: 1.0DEG
Test System: EVERFINE GO-2000B_V1 SYSTEM V2.0.362
Humidity: 65.0%
Test Distance: 9.200m [K=1.0000]
Remarks:

ZONAL FLUX DIAGRAM

ZONAL FLUX DIAGRAM:

γ	C0	C45	C90	C135	C180	C225	C270	C315	γ	Φ zone	Φ total	%lum, lamp
10	2.847	2.857	2.779	2.784	2.769	2.782	2.835	2.836	0- 10	0.2703	0.2703	1.96,1.96
20	2.824	2.746	2.583	2.631	2.684	2.643	2.639	2.764	10- 20	0.7796	1.050	7.6,7.6
30	2.744	2.566	2.297	2.412	2.558	2.440	2.332	2.586	20- 30	1.200	2.250	16.3,16.3
40	2.599	2.342	1.929	2.166	2.407	2.181	1.945	2.377	30- 40	1.490	3.739	27.1,27.1
50	2.453	2.073	1.507	1.892	2.256	1.900	1.513	2.133	40- 50	1.636	5.375	38.9,38.9
60	2.272	1.814	1.035	1.601	2.055	1.608	1.031	1.857	50- 60	1.637	7.012	50.8,50.8
70	2.071	1.523	0.5474	1.302	1.844	1.317	0.5482	1.568	60- 70	1.512	8.524	61.7,61.7
80	1.860	1.262	0.1153	1.045	1.618	1.065	0.1309	1.307	70- 80	1.298	9.822	71.1,71.1
90	1.624	1.050	0	0.8217	1.392	0.8318	0	1.096	80- 90	1.066	10.89	78.8,78.8
100	1.358	0.8117	0	0.6107	1.110	0.6257	0	0.8520	90-100	0.8723	11.76	85.1,85.1
110	1.126	0.7010	0.0050	0.4885	0.9245	0.5076	0	0.7037	100-110	0.6650	12.43	90,90
120	0.9300	0.5780	0.0050	0.3799	0.7085	0.3996	0	0.5906	110-120	0.5093	12.94	93.7,93.7
130	0.7741	0.4397	0.0050	0.3053	0.5776	0.3192	0	0.4914	120-130	0.3743	13.31	96.4,96.4
140	0.6184	0.2865	0.0101	0.2287	0.3819	0.2366	0	0.3355	130-140	0.2477	13.56	98.2,98.2
150	0.4775	0.2025	0.0101	0.1643	0.2864	0.1734	0	0.2421	140-150	0.1468	13.70	99.2,99.2
160	0.3269	0.1404	0.0101	0.0854	0.1757	0.1054	0	0.1656	150-160	0.0750	13.78	99.8,99.8
170	0.1005	0.1154	0.0101	0.0201	0.0451	0.0378	0	0.1448	160-170	0.0276	13.81	100,100
180	0.0251	0.0176	0.0101	0.0176	0.0151	0.0025	0.0101	0.0201	170-180	0.0055	13.81	100,100
DEG	LUMINOUS INTENSITY:cd									UNIT:lm		

Conical surface Flux(90deg): 4.5484 lm

%lum = 32.9%

%lamp = 32.9%

Conical surface Flux(120deg): 7.0121 lm

%lum = 50.8%

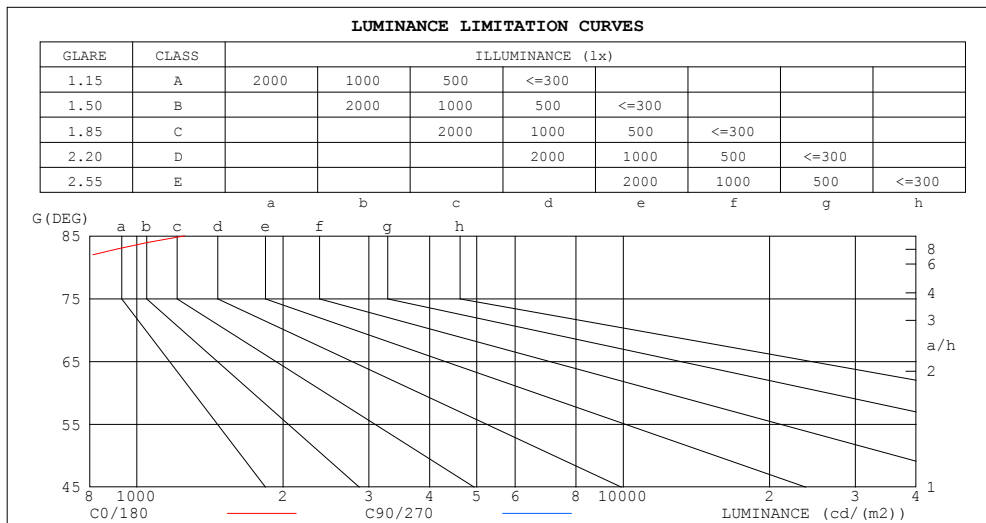
%lamp = 50.8%

C Range: 0 - 360DEG
 C Interval: 30.0DEG
 Test Speed: HIGH
 Temperature:25.3DEG
 Operators:LPC
 Test Date:2021-12-06

γ Range: 0 - 180DEG
 γ Interval: 1.0DEG
 Test System:EVERFINE GO-2000B_V1 SYSTEM V2.0.362
 Humidity:65.0%
 Test Distance:9.200m [K=1.0000]
 Remarks:

LUMINANCE LIMITATION CURVES

Test:U:12.00V I:0.4240A P:5.088W PF:1.000 Freq:50.00Hz Lamp Flux:13.8118x1 lm		
NAME: SF21-12V-3528-72-B	TYPE: 硅胶	WEIGHT:
SPEC.:	DIM.: 28mm*11.5mm	SERIAL No.:2021120606
MFR.: OLYMPIA	SUR.:1*0.016	Shielding Angle:



LUMINANCE cd/(m2)		
G (DEG)	C0/180	C90/270
85	1254	0
80	669	41
75	476	78
70	378	100
65	321	117
60	284	129
55	258	139
50	238	147
45	222	153

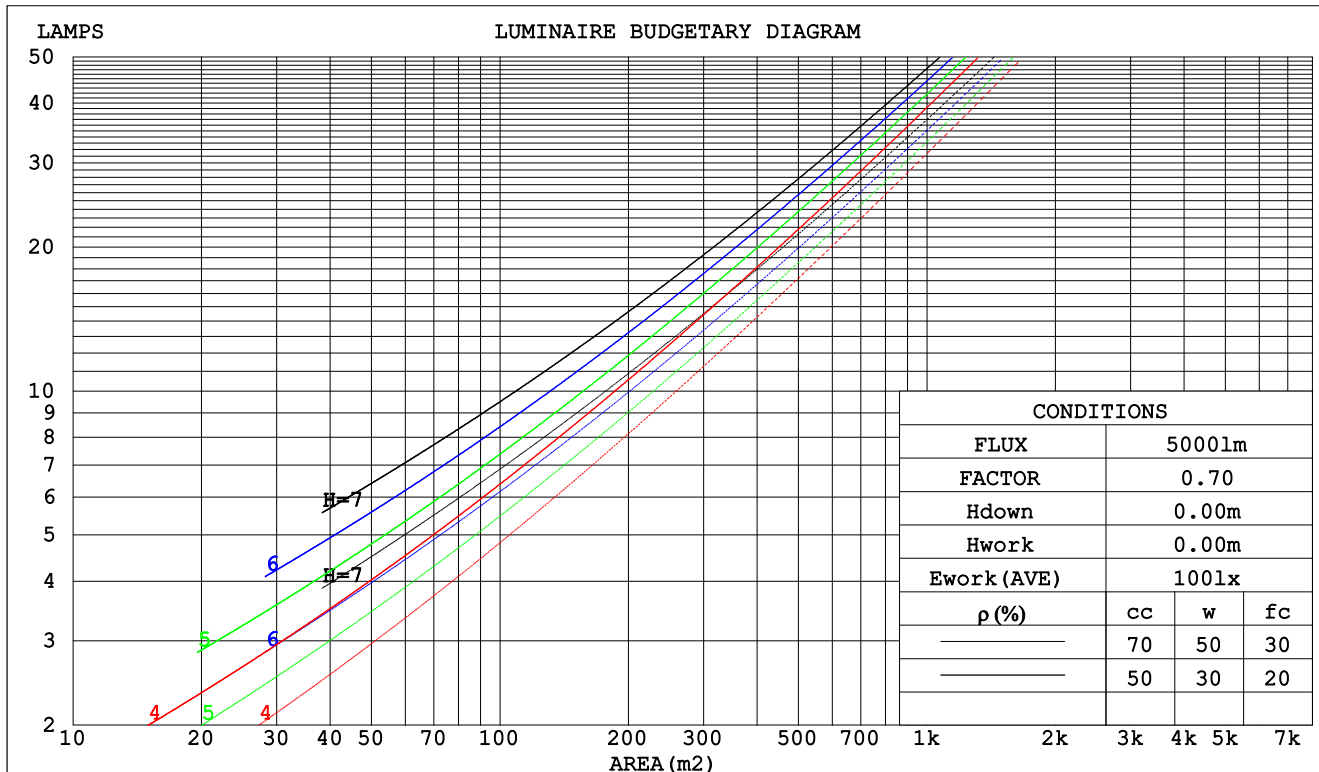
C Range: 0 - 360DEG
C Interval: 30.0DEG
Test Speed: HIGH
Temperature:25.3DEG
Operators:LPC
Test Date:2021-12-06

γ Range: 0 - 180DEG
γ Interval: 1.0DEG
Test System:EVERFINE GO-2000B_V1 SYSTEM V2.0.362
Humidity:65.0%
Test Distance:9.200m [K=1.0000]
Remarks:

CU AND LUMINAIRE BUDGETARY ESTIMATE DIAGRAM

Test:U:12.00V I:0.4240A P:5.088W PF:1.000 Freq:50.00Hz Lamp Flux:13.8118x1 lm		
NAME: SF21-12V-3528-72-B	TYPE: 硅胶	WEIGHT:
SPEC.:	DIM.: 28mm*11.5mm	SERIAL No.:2021120606
MFR.: OLYMPIA	SUR.:1*0.016	Shielding Angle:

pcc	80%			70%			50%			30%			10%			0
pw	50%	30%	10%	50%	30%	10%	50%	30%	10%	50%	30%	10%	50%	30%	10%	0
pfc	20%			20%			20%			20%			20%			0
RCR	RCR:Room Cavity Ratio						Coefficients of Utilization(CU)									
0.0	1.14	1.14	1.14	1.09	1.09	1.09	.99	.99	.99	.91	.91	.91	.83	.83	.83	.79
1.0	.95	.89	.85	.90	.86	.81	.82	.78	.75	.75	.71	.69	.68	.65	.63	.59
2.0	.81	.73	.67	.77	.70	.64	.70	.64	.59	.64	.59	.55	.58	.54	.51	.47
3.0	.70	.61	.54	.67	.59	.52	.61	.54	.49	.55	.50	.45	.50	.46	.42	.38
4.0	.62	.52	.45	.59	.50	.43	.54	.46	.41	.49	.43	.38	.44	.39	.35	.32
5.0	.55	.45	.38	.52	.44	.37	.48	.40	.35	.43	.37	.32	.40	.34	.30	.27
6.0	.49	.40	.33	.47	.38	.32	.43	.35	.30	.39	.33	.28	.36	.30	.26	.24
7.0	.44	.35	.29	.42	.34	.28	.39	.32	.26	.36	.29	.25	.32	.27	.23	.21
8.0	.40	.31	.25	.38	.30	.25	.35	.28	.23	.32	.26	.22	.30	.24	.21	.18
9.0	.37	.28	.23	.35	.27	.22	.32	.26	.21	.30	.24	.20	.27	.22	.18	.16
10.0	.34	.26	.20	.32	.25	.20	.30	.23	.19	.28	.22	.18	.25	.20	.17	.15



C Range: 0 - 360DEG
 C Interval: 30.0DEG
 Test Speed: HIGH
 Temperature:25.3DEG
 Operators:LPC
 Test Date:2021-12-06

γ Range: 0 - 180DEG
 γ Interval: 1.0DEG
 Test System:EVERFINE GO-2000B_V1 SYSTEM V2.0.362
 Humidity:65.0%
 Test Distance:9.200m [K=1.0000]
 Remarks:

WEC AND CCEC

Test:U:12.00V I:0.4240A P:5.088W PF:1.000 Freq:50.00Hz Lamp Flux:13.8118x1 lm		
NAME: SF21-12V-3528-72-B	TYPE: 硅胶	WEIGHT:
SPEC.:	DIM.: 28mm*11.5mm	SERIAL No.:2021120606
MFR.: OLYMPIA	SUR.:1*0.016	Shielding Angle:

pcc	80%			70%			50%			30%			10%			0	
pw	50%	30%	10%	50%	30%	10%	50%	30%	10%	50%	30%	10%	50%	30%	10%	0	
pfc	20%			20%			20%			20%			20%			0	
RCR	RCR:Room Cavity Ratio						Wall Exitance Coefficients(WEC)										
0.0																	
1.0	.387	.220	.070	.373	.213	.068	.348	.200	.064	.324	.187	.060	.303	.175	.057		
2.0	.334	.183	.056	.321	.177	.055	.298	.166	.051	.277	.155	.049	.257	.145	.046		
3.0	.296	.157	.047	.285	.152	.046	.264	.143	.043	.244	.134	.041	.226	.125	.039		
4.0	.266	.138	.041	.256	.134	.040	.237	.126	.037	.219	.118	.035	.202	.110	.034		
5.0	.242	.123	.036	.232	.119	.035	.215	.112	.033	.199	.105	.031	.184	.098	.029		
6.0	.221	.111	.032	.213	.108	.031	.197	.101	.029	.182	.095	.028	.168	.089	.026		
7.0	.204	.101	.029	.196	.098	.028	.182	.092	.026	.168	.086	.025	.155	.081	.024		
8.0	.189	.092	.026	.182	.090	.025	.169	.084	.024	.156	.079	.023	.144	.074	.022		
9.0	.176	.085	.024	.170	.083	.023	.157	.078	.022	.146	.073	.021	.135	.068	.020		
10.0	.165	.079	.022	.159	.077	.021	.147	.072	.020	.137	.068	.019	.126	.064	.018		

pcc	80%			70%			50%			30%			10%			0
pw	50%	30%	10%	50%	30%	10%	50%	30%	10%	50%	30%	10%	50%	30%	10%	0
pfc	20%			20%			20%			20%			20%			0
RCR	RCR:Room Cavity Ratio						Ceiling Cavity Exitance Coefficients(CCEC)									
0.0	.352	.352	.352	.301	.301	.301	.205	.205	.205	.118	.118	.118	.038	.038	.038	
1.0	.348	.318	.291	.298	.273	.250	.204	.188	.173	.117	.109	.101	.038	.035	.033	
2.0	.342	.295	.257	.293	.254	.222	.200	.176	.155	.116	.102	.091	.037	.033	.030	
3.0	.334	.279	.235	.286	.241	.204	.197	.167	.143	.114	.098	.084	.036	.032	.028	
4.0	.326	.267	.221	.280	.230	.192	.193	.161	.135	.111	.094	.080	.036	.031	.026	
5.0	.319	.257	.211	.274	.222	.184	.188	.155	.130	.109	.091	.077	.035	.030	.025	
6.0	.311	.249	.204	.267	.216	.178	.185	.151	.126	.107	.089	.075	.035	.029	.025	
7.0	.304	.242	.199	.262	.210	.174	.181	.147	.123	.105	.087	.073	.034	.028	.024	
8.0	.297	.237	.195	.256	.206	.170	.177	.144	.121	.103	.085	.072	.033	.028	.024	
9.0	.291	.232	.192	.251	.202	.168	.174	.142	.119	.101	.084	.071	.033	.027	.024	
10.0	.285	.228	.190	.246	.198	.166	.171	.139	.118	.100	.082	.070	.032	.027	.023	

C Range: 0 - 360DEG
 C Interval: 30.0DEG
 Test Speed: HIGH
 Temperature:25.3DEG
 Operators:LPC
 Test Date:2021-12-06

γ Range: 0 - 180DEG
 γ Interval: 1.0DEG
 Test System:EVERFINE GO-2000B_V1 SYSTEM V2.0.362
 Humidity:65.0%
 Test Distance:9.200m [K=1.0000]
 Remarks:

UGR(Unified Glare Rating) Table

Test:U:12.00V I:0.4240A P:5.088W PF:1.000 Freq:50.00Hz Lamp Flux:13.8118x1 lm										
NAME: SF21-12V-3528-72-B					TYPE:硅胶			WEIGHT:		
SPEC.:					DIM.: 28mm*11.5mm			SERIAL No.:2021120606		
MFR.: OLYMPIA					SUR.:1*0.016			Shielding Angle:		
ceiling/cavity	0.7	0.7	0.5	0.5	0.3	0.7	0.7	0.5	0.5	0.3
walls	0.5	0.3	0.5	0.3	0.3	0.5	0.3	0.5	0.3	0.3
working plane	0.2	0.2	0.2	0.2	0.2	0.2	0.2	0.2	0.2	0.2
Room dimensions	Viewed crosswise					Viewed endwise				
x = 2H y = 2H	22.3	23.7	22.9	24.2	24.9	19.6	21.0	20.2	21.5	22.1
3H	25.2	26.4	25.8	27.0	27.7	21.0	22.2	21.6	22.8	23.5
4H	26.8	28.0	27.4	28.6	29.2	21.5	22.6	22.1	23.2	23.9
6H	28.6	29.7	29.2	30.3	31.0	21.7	22.8	22.3	23.4	24.1
8H	29.5	30.6	30.2	31.2	32.0	21.7	22.8	22.3	23.4	24.1
12H	30.7	31.7	31.3	32.4	33.1	21.7	22.7	22.3	23.4	24.1
4H 2H	22.9	24.1	23.5	24.7	25.4	21.0	22.2	21.6	22.8	23.5
3H	26.0	27.0	26.6	27.7	28.4	22.7	23.8	23.4	24.4	25.1
4H	27.8	28.7	28.4	29.4	30.2	23.5	24.4	24.1	25.1	25.9
6H	29.8	30.6	30.5	31.3	32.1	24.0	24.9	24.7	25.5	26.3
8H	30.9	31.7	31.6	32.4	33.2	24.1	24.9	24.8	25.6	26.5
12H	32.2	32.9	32.9	33.6	34.4	24.2	24.9	24.9	25.7	26.5
8H 4H	28.1	28.9	28.8	29.6	30.4	24.8	25.6	25.5	26.3	27.1
6H	30.4	31.1	31.2	31.8	32.7	25.9	26.5	26.6	27.3	28.1
8H	31.8	32.4	32.5	33.1	34.0	26.3	26.9	27.0	27.6	28.5
12H	33.3	33.8	34.1	34.6	35.5	26.6	27.2	27.4	27.9	28.8
12H 4H	28.1	28.9	28.9	29.6	30.4	25.3	26.0	26.0	26.7	27.6
6H	30.5	31.1	31.3	31.9	32.8	26.6	27.2	27.3	27.9	28.8
8H	32.0	32.5	32.8	33.3	34.2	27.3	27.8	28.0	28.6	29.5
Variations with the observer position at spacings:										
S = 1.0H	+ 0.1 / - 0.1					+ 0.1 / - 0.1				
1.5H	+ 0.2 / - 0.3					+ 0.2 / - 0.3				
2.0H	+ 0.3 / - 0.3					+ 0.3 / - 0.4				

CIE Pub.117, 13.81 lm Total Lamp Luminous Flux Correct (8log(F/F0) = -14.9)

C Range: 0 - 360DEG
C Interval: 30.0DEG
Test Speed: HIGH
Temperature:25.3DEG
Operators:LPC
Test Date:2021-12-06

γ Range: 0 - 180DEG
γ Interval: 1.0DEG
Test System:EVERFINE GO-2000B_V1 SYSTEM V2.0.362
Humidity:65.0%
Test Distance:9.200m [K=1.0000]
Remarks:

UTILIZATION FACTORS TABLE

Test:U:12.00V I:0.4240A P:5.088W PF:1.000 Freq:50.00Hz Lamp Flux:13.8118x1 lm		
NAME: SF21-12V-3528-72-B	TYPE: 硅胶	WEIGHT:
SPEC.:	DIM.: 28mm*11.5mm	SERIAL No.:2021120606
MFR.: OLYMPIA	SUR.:1*0.016	Shielding Angle:

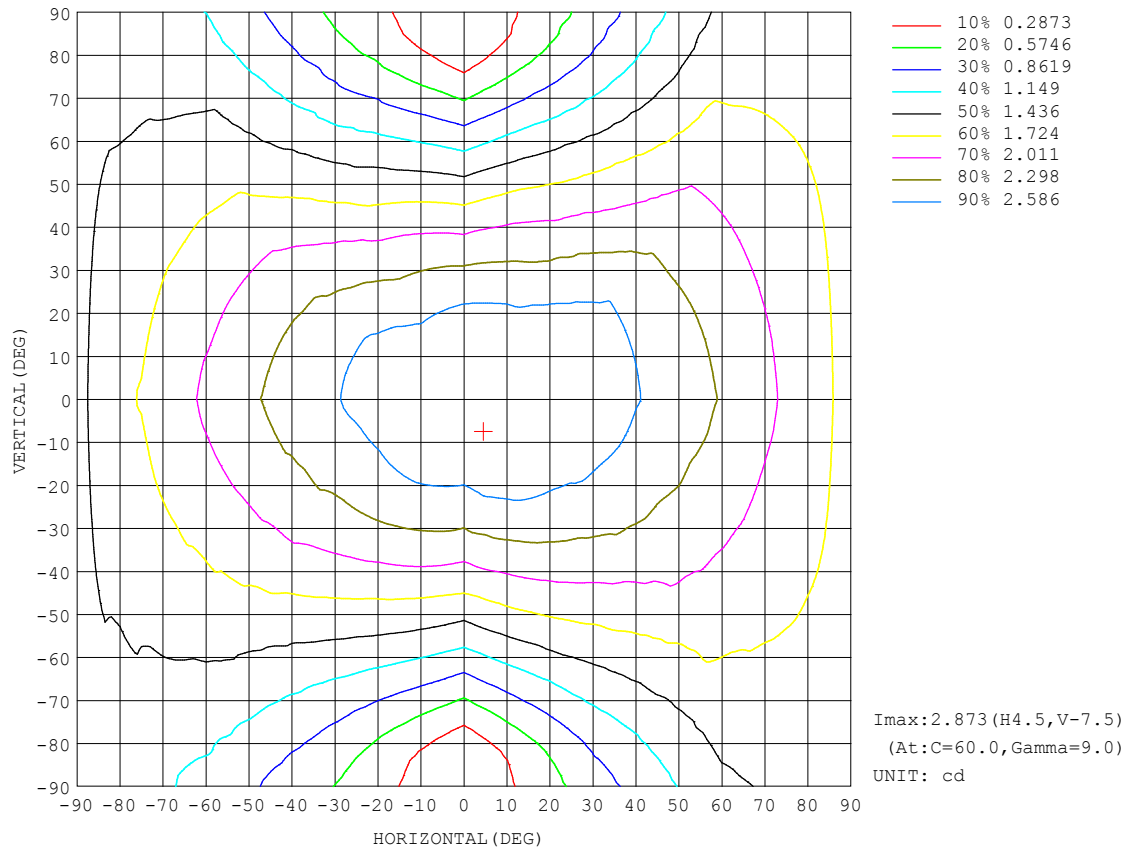
REFLECTANCE										
Ceiling	0.8	0.8	0.8	0.7	0.7	0.7	0.5	0.5	0.5	0
Walls	0.7	0.5	0.3	0.7	0.5	0.3	0.7	0.5	0.3	0
Working plane	0.2	0.2	0.2	0.2	0.2	0.2	0.2	0.2	0.2	0
ROOM INDEX	UTILIZATION FACTORS (PERCENT) $k(RI) \times RCR = 5$									
$k = 0.60$	47	34	27	46	34	27	43	33	26	20
0.80	56	43	35	54	42	34	51	40	33	25
1.00	63	50	42	61	49	41	58	50	40	31
1.25	70	58	49	68	56	48	63	53	46	36
1.50	75	63	54	73	61	53	67	58	51	40
2.00	83	71	63	79	69	61	73	65	58	46
2.50	87	77	69	84	74	67	77	69	63	50
3.00	91	82	74	87	79	72	80	73	67	53
4.00	96	88	81	92	84	78	84	78	73	58
5.00	99	92	86	94	88	83	86	81	77	61
ROOM INDEX	UF (total)									Direct
According to DIN EN 13032-2 2004			Suspended					SHRNOM = 1.25		

C Range: 0 - 360DEG
 C Interval: 30.0DEG
 Test Speed: HIGH
 Temperature:25.3DEG
 Operators:LPC
 Test Date:2021-12-06

γ Range: 0 - 180DEG
 γ Interval: 1.0DEG
 Test System:EVERFINE GO-2000B_V1 SYSTEM V2.0.362
 Humidity:65.0%
 Test Distance:9.200m [K=1.0000]
 Remarks:

ISOCANDELA DIAGRAM

Test:U:12.00V I:0.4240A P:5.088W PF:1.000 Freq:50.00Hz Lamp Flux:13.8118x1 lm		
NAME: SF21-12V-3528-72-B	TYPE: 硅胶	WEIGHT:
SPEC.:	DIM.: 28mm*11.5mm	SERIAL No.:2021120606
MFR.: OLYMPIA	SUR.:1*0.016	Shielding Angle:

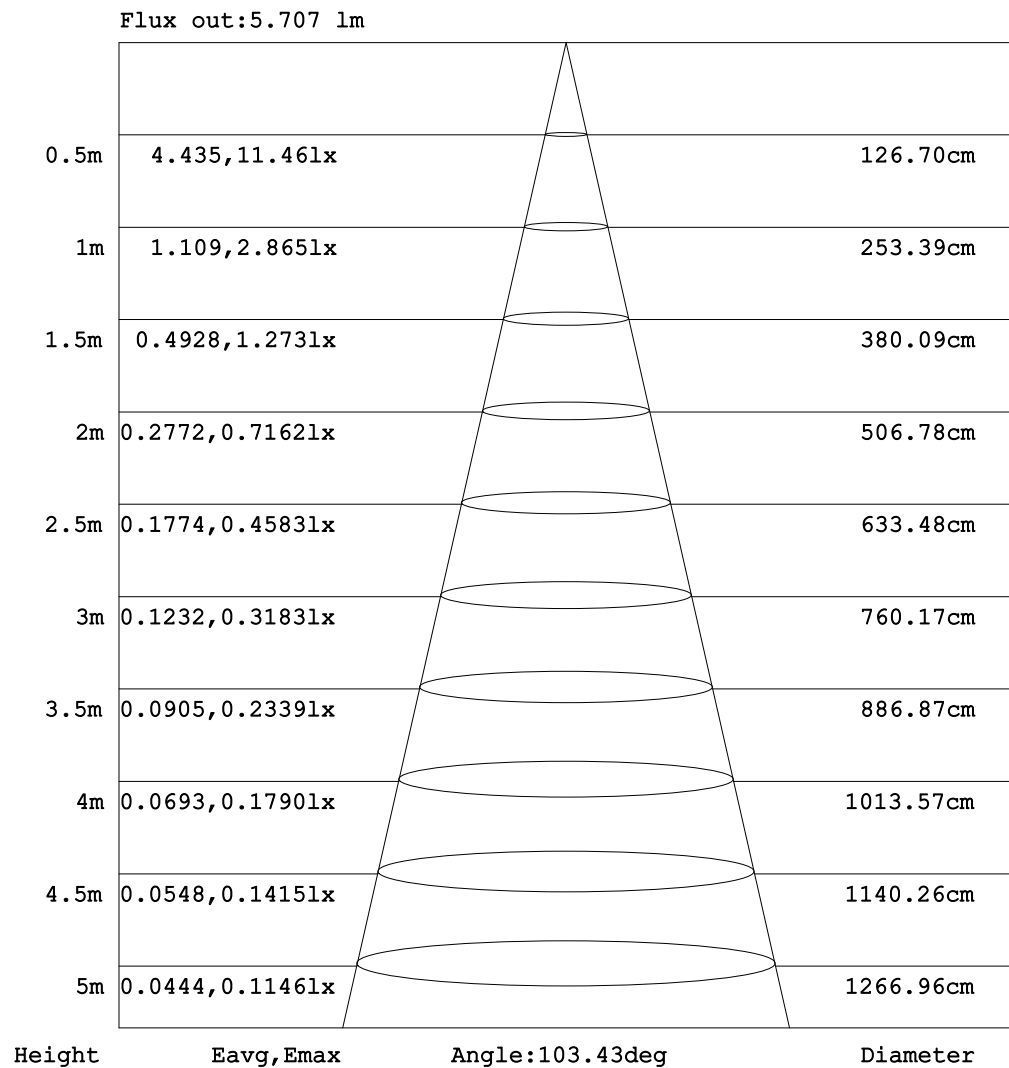


C Range: 0 - 360DEG
C Interval: 30.0DEG
Test Speed: HIGH
Temperature: 25.3DEG
Operators: LPC
Test Date: 2021-12-06

γ Range: 0 - 180DEG
 γ Interval: 1.0DEG
Test System: EVERFINE GO-2000B_V1 SYSTEM V2.0.362
Humidity: 65.0%
Test Distance: 9.200m [K=1.0000]
Remarks:

AAI Figure

Test:U:12.00V I:0.4240A P:5.088W PF:1.000 Freq:50.00Hz Lamp Flux:13.8118x1 lm		
NAME: SF21-12V-3528-72-B	TYPE: 硅胶	WEIGHT:
SPEC.:	DIM.: 28mm*11.5mm	SERIAL No.:2021120606
MFR.: OLYMPIA	SUR.:1*0.016	Shielding Angle:



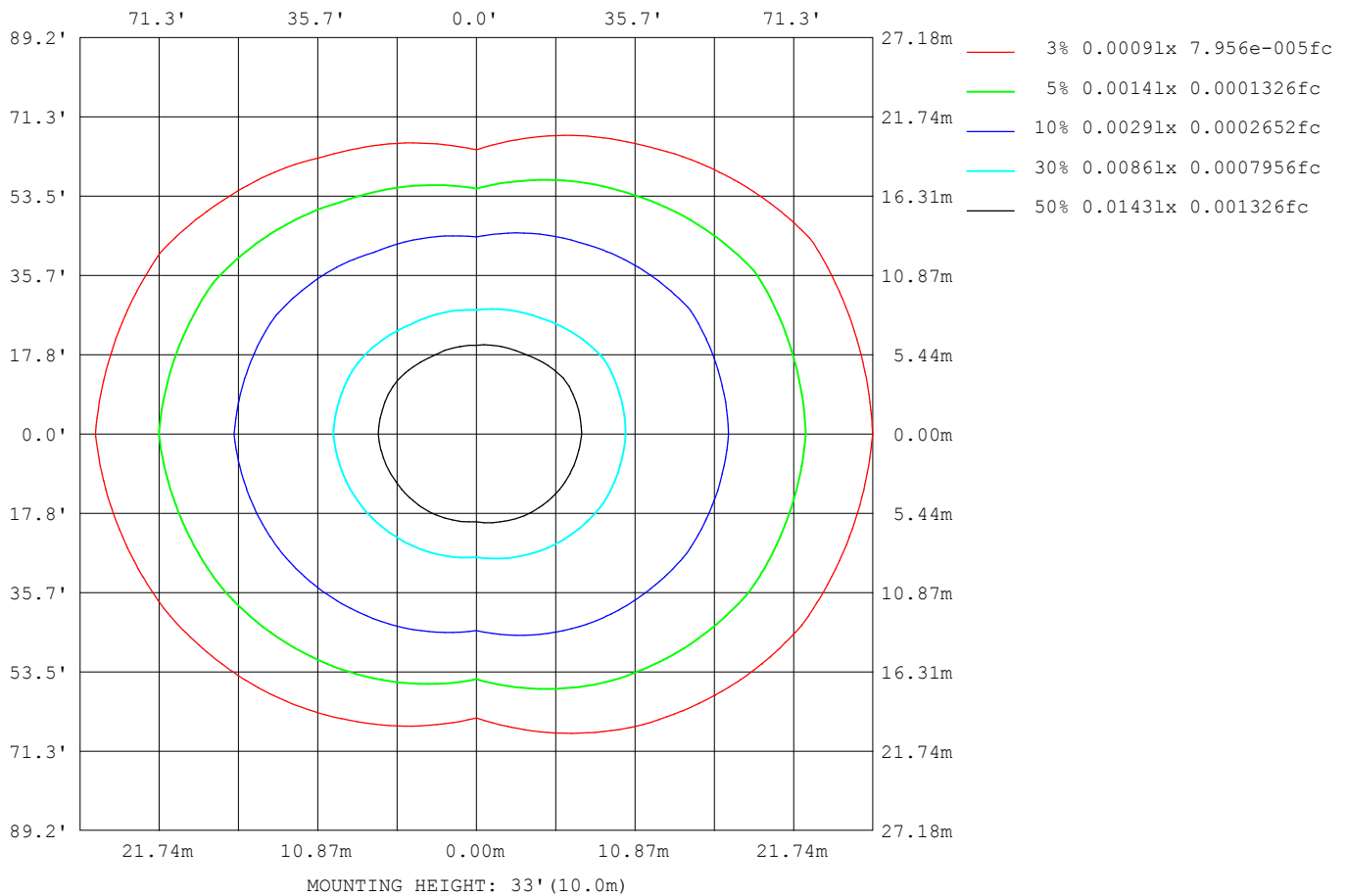
Note:The Curves indicate the illuminated area and the average illumination when the luminaire is at different distance.

C Range: 0 - 360DEG
 C Interval: 30.0DEG
 Test Speed: HIGH
 Temperature:25.3DEG
 Operators:LPC
 Test Date:2021-12-06

γ Range: 0 - 180DEG
 γ Interval: 1.0DEG
 Test System:EVERFINE GO-2000B_V1 SYSTEM V2.0.362
 Humidity:65.0%
 Test Distance:9.200m [K=1.0000]
 Remarks:

ISOLUX DIAGRAM

Test:U:12.00V I:0.4240A P:5.088W PF:1.000 Freq:50.00Hz Lamp Flux:13.8118x1 lm		
NAME: SF21-12V-3528-72-B	TYPE: 硅胶	WEIGHT:
SPEC.:	DIM.: 28mm*11.5mm	SERIAL No.:2021120606
MFR.: OLYMPIA	SUR.:1*0.016	Shielding Angle:



C Range: 0 - 360DEG
C Interval: 30.0DEG
Test Speed: HIGH
Temperature:25.3DEG
Operators:LPC
Test Date:2021-12-06

γ Range: 0 - 180DEG
 γ Interval: 1.0DEG
Test System:EVERFINE GO-2000B_V1 SYSTEM V2.0.362
Humidity:65.0%
Test Distance:9.200m [K=1.0000]
Remarks:

LED Avg.L Report

Test:U:12.00V I:0.4240A P:5.088W PF:1.000 Freq:50.00Hz Lamp Flux:13.8118x1 lm		
NAME: SF21-12V-3528-72-B	TYPE:硅胶	WEIGHT:
SPEC.:	DIM.: 28mm*11.5mm	SERIAL No.:2021120606
MFR.: OLYMPIA	SUR.:1*0.016	Shielding Angle:

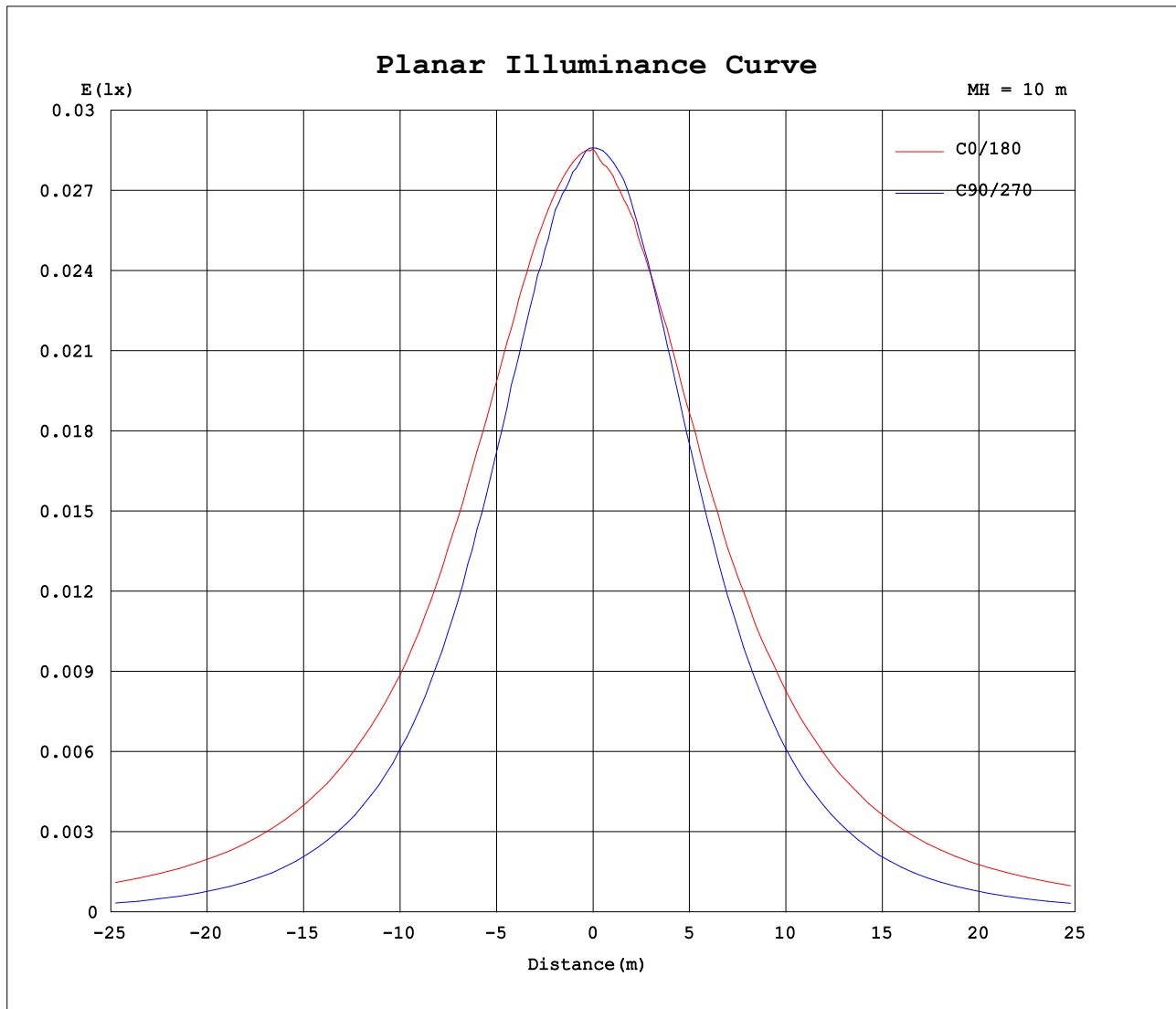
AvgL	cd/m2
L_0~180 (65) av	306
L_0~180 (75) av	447
L_0~180 (85) av	1166
L_90~270 (65) av	117
L_90~270 (75) av	78
L_90~270 (85) av	0
L_45 (65) av	235
L_45 (75) av	319
L_45 (85) av	775

Standard: GB/T 29293-2012

C Range: 0 - 360DEG
C Interval: 30.0DEG
Test Speed: HIGH
Temperature:25.3DEG
Operators:LPC
Test Date:2021-12-06

γ Range: 0 - 180DEG
γ Interval: 1.0DEG
Test System:EVERFINE GO-2000B_V1 SYSTEM V2.0.362
Humidity:65.0%
Test Distance:9.200m [K=1.0000]
Remarks:

Planar Illuminance Curve



C Range: 0 - 360DEG
C Interval: 30.0DEG
Test Speed: HIGH
Temperature: 25.3DEG
Operators: LPC
Test Date: 2021-12-06

γ Range: 0 - 180DEG
 γ Interval: 1.0DEG
Test System: EVERFINE GO-2000B_V1 SYSTEM V2.0.362
Humidity: 65.0%
Test Distance: 9.200m [K=1.0000]
Remarks:

LUMINOUS DISTRIBUTION INTENSITY DATA

Test:U:12.00V I:0.4240A P:5.088W PF:1.000 Freq:50.00Hz Lamp Flux:13.8118x1 lm		
NAME: SF21-12V-3528-72-B	TYPE: 硅胶	WEIGHT:
SPEC.:	DIM.: 28mm*11.5mm	SERIAL No.:2021120606
MFR.: OLYMPIA	SUR.:1*0.016	Shielding Angle:

Table--1

UNIT: cd

C (DEG) γ (DEG)	0	30	60	90	120	150	180	210	240	270	300	330						
0	2.85	2.86	2.85	2.86	2.86	2.83	2.85	2.86	2.85	2.86	2.86	2.83						
5	2.85	2.87	2.87	2.81	2.86	2.79	2.80	2.85	2.81	2.85	2.86	2.86						
10	2.85	2.85	2.86	2.78	2.80	2.76	2.77	2.80	2.76	2.83	2.81	2.86						
15	2.84	2.80	2.81	2.69	2.73	2.71	2.73	2.75	2.69	2.75	2.77	2.85						
20	2.82	2.76	2.73	2.58	2.63	2.63	2.68	2.70	2.59	2.64	2.68	2.84						
25	2.79	2.69	2.62	2.45	2.52	2.54	2.62	2.61	2.47	2.49	2.56	2.78						
30	2.74	2.63	2.50	2.30	2.39	2.44	2.56	2.52	2.36	2.33	2.45	2.72						
35	2.68	2.55	2.36	2.12	2.24	2.36	2.47	2.42	2.21	2.15	2.31	2.66						
40	2.60	2.47	2.22	1.93	2.09	2.25	2.41	2.32	2.05	1.95	2.17	2.59						
45	2.51	2.38	2.06	1.73	1.91	2.14	2.34	2.22	1.88	1.73	2.03	2.49						
50	2.45	2.24	1.91	1.51	1.73	2.05	2.26	2.11	1.69	1.51	1.88	2.38						
55	2.37	2.15	1.73	1.28	1.58	1.90	2.16	1.99	1.52	1.28	1.72	2.26						
60	2.27	2.05	1.58	1.03	1.41	1.79	2.06	1.86	1.36	1.03	1.54	2.17						
65	2.17	1.93	1.40	0.79	1.23	1.65	1.97	1.74	1.19	0.79	1.39	2.06						
70	2.07	1.80	1.24	0.55	1.07	1.54	1.84	1.62	1.02	0.55	1.20	1.94						
75	1.97	1.71	1.09	0.32	0.91	1.42	1.73	1.51	0.86	0.33	1.05	1.82						
80	1.86	1.59	0.94	0.12	0.78	1.31	1.62	1.39	0.74	0.13	0.91	1.70						
85	1.75	1.48	0.82	0.00	0.66	1.18	1.50	1.27	0.61	0.00	0.78	1.60						
90	1.62	1.38	0.72	0.00	0.57	1.08	1.39	1.15	0.52	0.00	0.69	1.50						
95	1.51	1.27	0.66	0.00	0.50	0.96	1.26	1.04	0.46	0.00	0.61	1.40						
100	1.36	1.04	0.59	0.00	0.44	0.78	1.11	0.87	0.38	0.00	0.53	1.18						
105	1.24	0.99	0.50	0.00	0.33	0.76	1.01	0.82	0.31	0.00	0.44	1.11						
110	1.13	0.92	0.48	0.01	0.30	0.68	0.92	0.74	0.27	0.00	0.40	1.01						
115	1.03	0.83	0.43	0.01	0.27	0.56	0.79	0.66	0.22	0.00	0.38	0.92						
120	0.93	0.76	0.40	0.01	0.25	0.51	0.71	0.59	0.21	0.00	0.35	0.83						
125	0.85	0.69	0.34	0.01	0.23	0.45	0.63	0.53	0.21	0.00	0.31	0.75						
130	0.77	0.61	0.27	0.01	0.21	0.40	0.58	0.47	0.17	0.00	0.29	0.69						
135	0.70	0.51	0.24	0.01	0.20	0.34	0.49	0.41	0.15	0.00	0.23	0.58						
140	0.62	0.39	0.18	0.01	0.17	0.29	0.38	0.35	0.13	0.00	0.21	0.46						
145	0.54	0.31	0.18	0.01	0.15	0.24	0.35	0.31	0.11	0.00	0.20	0.38						
150	0.48	0.25	0.16	0.01	0.13	0.20	0.29	0.27	0.08	0.00	0.15	0.33						
155	0.41	0.20	0.15	0.01	0.09	0.15	0.24	0.22	0.05	0.00	0.14	0.28						
160	0.33	0.13	0.16	0.01	0.05	0.12	0.18	0.18	0.03	0.00	0.13	0.20						
165	0.25	0.08	0.16	0.01	0.03	0.04	0.13	0.14	0.01	0.00	0.13	0.17						
170	0.10	0.08	0.16	0.01	0.03	0.02	0.05	0.07	0.01	0.00	0.13	0.16						
175	0.07	0.08	0.16	0.01	0.03	0.02	0.02	0.03	0.01	0.01	0.12	0.16						
180	0.03	0.01	0.03	0.01	0.02	0.02	0.02	0.00	0.01	0.01	0.02	0.02						

C Range: 0 - 360DEG
C Interval: 30.0DEG
Test Speed: HIGH
Temperature:25.3DEG
Operators:LPC
Test Date:2021-12-06

γ Range: 0 - 180DEG
γ Interval: 1.0DEG
Test System:EVERFINE GO-2000B_V1 SYSTEM V2.0.362
Humidity:65.0%
Test Distance:9.200m [K=1.0000]
Remarks:

Photometric Data Table [cd]

G/C	0.0	30.0	60.0	90.0	120.0	150.0	180.0	210.0	240.0	270.0
0.0	2.854	2.865	2.850	2.860	2.865	2.834	2.854	2.865	2.850	2.860
3.0	2.855	2.865	2.855	2.839	2.865	2.804	2.809	2.860	2.819	2.860
6.0	2.851	2.868	2.865	2.814	2.850	2.779	2.799	2.835	2.794	2.852
9.0	2.848	2.860	2.875	2.789	2.820	2.774	2.769	2.815	2.769	2.845
12.0	2.845	2.814	2.855	2.754	2.779	2.729	2.764	2.789	2.729	2.799
15.0	2.842	2.799	2.815	2.689	2.729	2.709	2.729	2.754	2.689	2.749
18.0	2.835	2.776	2.764	2.633	2.669	2.663	2.704	2.724	2.618	2.684
21.0	2.819	2.749	2.714	2.558	2.609	2.613	2.684	2.679	2.563	2.609
24.0	2.799	2.709	2.654	2.477	2.548	2.563	2.643	2.634	2.498	2.528
27.0	2.769	2.684	2.579	2.392	2.468	2.523	2.608	2.583	2.422	2.433
30.0	2.744	2.628	2.503	2.297	2.388	2.437	2.558	2.523	2.357	2.332
33.0	2.714	2.598	2.423	2.206	2.302	2.392	2.523	2.463	2.256	2.222
36.0	2.674	2.538	2.337	2.080	2.212	2.322	2.462	2.392	2.166	2.111
39.0	2.619	2.493	2.247	1.970	2.111	2.291	2.432	2.327	2.065	1.986
42.0	2.563	2.437	2.151	1.844	2.011	2.206	2.387	2.277	1.970	1.865
45.0	2.513	2.377	2.061	1.728	1.910	2.141	2.342	2.222	1.879	1.729
48.0	2.478	2.297	1.965	1.583	1.805	2.075	2.292	2.151	1.759	1.593
51.0	2.438	2.226	1.870	1.457	1.709	2.000	2.231	2.086	1.658	1.468
54.0	2.377	2.161	1.774	1.326	1.609	1.920	2.191	2.010	1.553	1.327
57.0	2.337	2.116	1.674	1.181	1.513	1.849	2.121	1.935	1.467	1.181
60.0	2.272	2.050	1.578	1.035	1.408	1.794	2.055	1.860	1.357	1.031
63.0	2.212	1.975	1.468	0.8891	1.302	1.713	1.995	1.784	1.256	0.8900
66.0	2.151	1.915	1.367	0.7484	1.196	1.648	1.940	1.719	1.170	0.7392
69.0	2.096	1.829	1.272	0.5976	1.091	1.573	1.874	1.649	1.050	0.5934
72.0	2.036	1.764	1.172	0.4519	1.000	1.493	1.804	1.583	0.9645	0.4578
75.0	1.970	1.713	1.086	0.3214	0.9100	1.422	1.734	1.508	0.8592	0.3270
78.0	1.905	1.638	0.9954	0.1956	0.8246	1.357	1.663	1.443	0.7789	0.2014
81.0	1.840	1.558	0.9099	0.0801	0.7591	1.271	1.588	1.362	0.6983	0.1007
84.0	1.769	1.503	0.8495	0	0.6838	1.196	1.523	1.292	0.6329	0.0203
87.0	1.694	1.442	0.7792	0	0.6234	1.126	1.452	1.216	0.5678	0
90.0	1.624	1.377	0.7240	0	0.5681	1.075	1.392	1.146	0.5175	0
93.0	1.563	1.316	0.6837	0	0.5229	1.0000	1.311	1.081	0.4672	0
96.0	1.493	1.241	0.6385	0	0.4926	0.9346	1.236	1.020	0.4522	0
99.0	1.408	1.100	0.5982	0	0.4624	0.7940	1.150	0.8801	0.3969	0
102.0	1.307	1.030	0.5630	0	0.4224	0.7740	1.080	0.8494	0.3716	0
105.0	1.237	0.9949	0.5028	0	0.3268	0.7585	1.010	0.8193	0.3063	0
108.0	1.171	0.9297	0.4877	0	0.3115	0.6934	0.9495	0.7790	0.2913	0
111.0	1.111	0.8894	0.4625	0.0050	0.2922	0.6581	0.9044	0.7239	0.2561	0
114.0	1.051	0.8392	0.4263	0.0050	0.2757	0.5978	0.8288	0.6836	0.2161	0
117.0	0.9854	0.7990	0.4232	0.0050	0.2649	0.5416	0.7637	0.6384	0.2061	0
120.0	0.9300	0.7588	0.3972	0.0050	0.2513	0.5085	0.7085	0.5932	0.2060	0
123.0	0.8798	0.7235	0.3619	0.0050	0.2313	0.4673	0.6783	0.5530	0.2060	0
126.0	0.8345	0.6834	0.3268	0.0050	0.2238	0.4423	0.6230	0.5177	0.1959	0
129.0	0.7843	0.6430	0.2765	0.0050	0.2162	0.4169	0.5929	0.4776	0.1709	0
132.0	0.7390	0.5627	0.2463	0.0050	0.2061	0.3768	0.5326	0.4474	0.1557	0
135.0	0.6987	0.5073	0.2363	0.0050	0.1961	0.3417	0.4924	0.4122	0.1457	0
138.0	0.6534	0.4369	0.2011	0.0150	0.1810	0.3115	0.4519	0.3538	0.1343	0
141.0	0.6033	0.3718	0.1809	0.0101	0.1709	0.2814	0.3770	0.3411	0.1247	0
144.0	0.5580	0.3315	0.1709	0.0101	0.1508	0.2611	0.3617	0.3217	0.1151	0
147.0	0.5178	0.3015	0.1708	0.0101	0.1407	0.2210	0.3315	0.2866	0.1055	0
150.0	0.4775	0.2461	0.1588	0.0101	0.1257	0.2029	0.2864	0.2664	0.0804	0
153.0	0.4374	0.2060	0.1549	0.0101	0.1006	0.1657	0.2711	0.2412	0.0553	0
156.0	0.3971	0.1858	0.1550	0.0101	0.0854	0.1356	0.2210	0.2111	0.0352	0
159.0	0.3470	0.1356	0.1551	0.0101	0.0604	0.1156	0.1908	0.1810	0.0352	0
162.0	0.2967	0.1205	0.1552	0.0101	0.0403	0.0803	0.1507	0.1659	0.0101	0
165.0	0.2515	0.0754	0.1553	0.0101	0.0252	0.0402	0.1322	0.1358	0.0101	0
168.0	0.1159	0.0754	0.1554	0.0101	0.0251	0.0201	0.0503	0.0906	0.0101	0
171.0	0.0955	0.0754	0.1555	0.0101	0.0251	0.0151	0.0300	0.0554	0.0050	0
174.0	0.0805	0.0754	0.1556	0.0101	0.0251	0.0151	0.0151	0.0251	0.0050	0
177.0	0.0604	0.0702	0.1557	0.0101	0.0251	0.0151	0.0151	0.0002	0.0050	0.0101
180.0	0.0251	0.0101	0.0251	0.0101	0.0201	0.0151	0.0151	0	0.0050	0.0101
G/C	300.0	330.0								
0.0	2.865	2.834								
3.0	2.865	2.855								
6.0	2.859	2.863								
9.0	2.844	2.860								
12.0	2.799	2.857								
15.0	2.769	2.854								
18.0	2.719	2.851								
21.0	2.663	2.830								
24.0	2.603	2.799								
27.0	2.523	2.759								
30.0	2.452	2.719								

C Range: 0 - 360DEG
 C Interval: 30.0DEG
 Test Speed: HIGH
 Temperature: 25.3DEG
 Operators: LPC
 Test Date: 2021-12-06

V Range: 0 - 180DEG
 V Interval: 1.0DEG
 Test System: EVERFINE GO-2000B_V1 SYSTEM V2.0.362
 Humidity: 65.0%
 Test Distance: 9.200m [K=1.0000]
 Remarks:

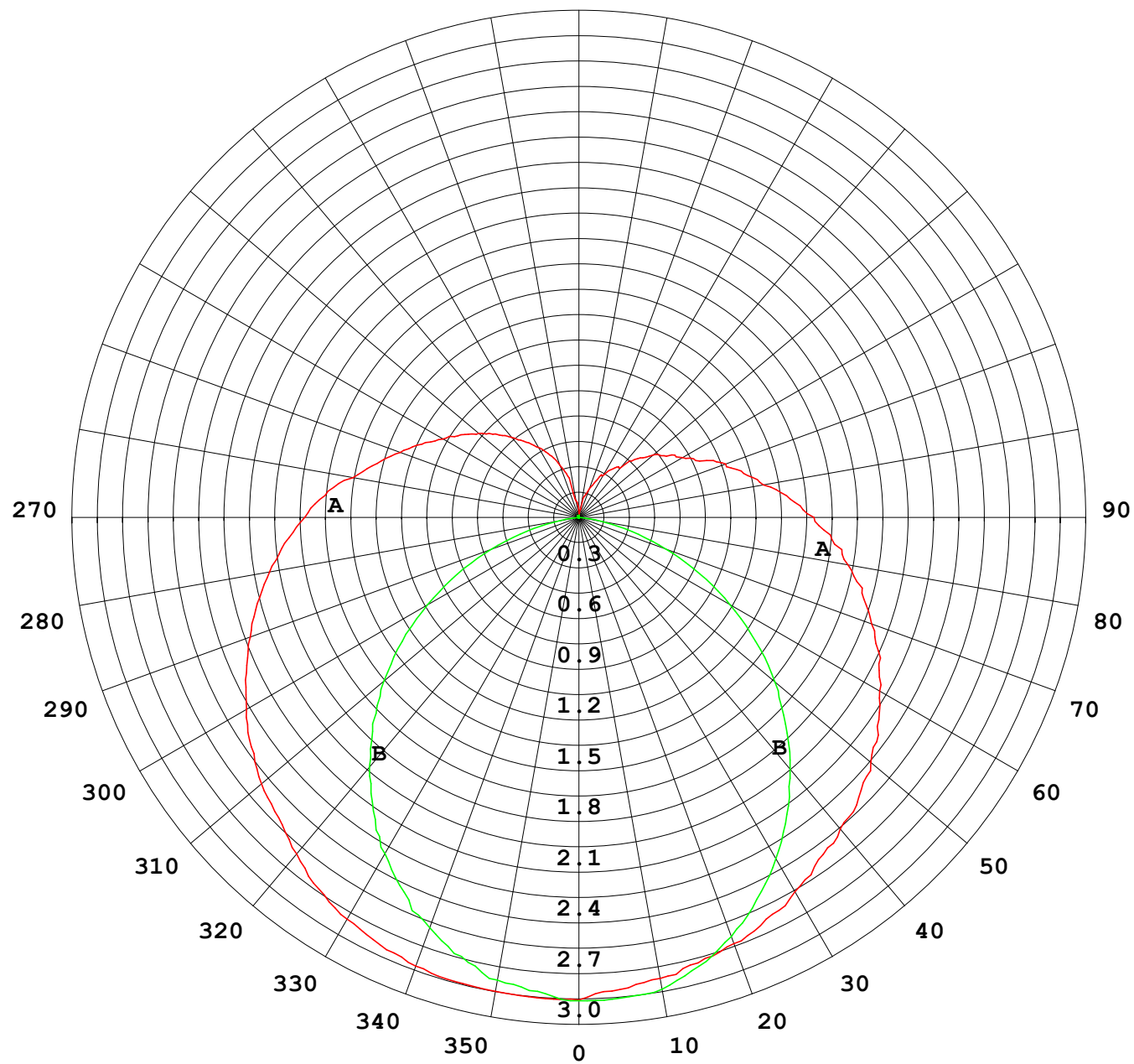
Photometric Data Table [cd]

33.0	2.362	2.684
36.0	2.291	2.644
39.0	2.211	2.598
42.0	2.131	2.553
45.0	2.035	2.488
48.0	1.940	2.428
51.0	1.839	2.352
54.0	1.744	2.277
57.0	1.653	2.222
60.0	1.543	2.171
63.0	1.447	2.101
66.0	1.336	2.031
69.0	1.246	1.965
72.0	1.155	1.895
75.0	1.045	1.825
78.0	0.9596	1.764
81.0	0.8742	1.689
84.0	0.8088	1.629
87.0	0.7636	1.578
90.0	0.6885	1.503
93.0	0.6331	1.443
96.0	0.5980	1.377
99.0	0.5376	1.227
102.0	0.5023	1.156
105.0	0.4423	1.111
108.0	0.4369	1.051
111.0	0.4069	0.9902
114.0	0.3862	0.9449
117.0	0.3689	0.8998
120.0	0.3516	0.8296
123.0	0.3166	0.7690
126.0	0.3040	0.7439
129.0	0.2965	0.7088
132.0	0.2913	0.6435
135.0	0.2261	0.5782
138.0	0.2186	0.5028
141.0	0.2110	0.4424
144.0	0.2035	0.4022
147.0	0.1607	0.3619
150.0	0.1524	0.3318
153.0	0.1440	0.2966
156.0	0.1391	0.2565
159.0	0.1360	0.2262
162.0	0.1328	0.1910
165.0	0.1292	0.1709
168.0	0.1256	0.1672
171.0	0.1244	0.1634
174.0	0.1224	0.1596
177.0	0.1204	0.1558
180.0	0.0201	0.0201

C Range: 0 - 360DEG
 C Interval: 30.0DEG
 Test Speed: HIGH
 Temperature: 25.3DEG
 Operators: LPC
 Test Date: 2021-12-06

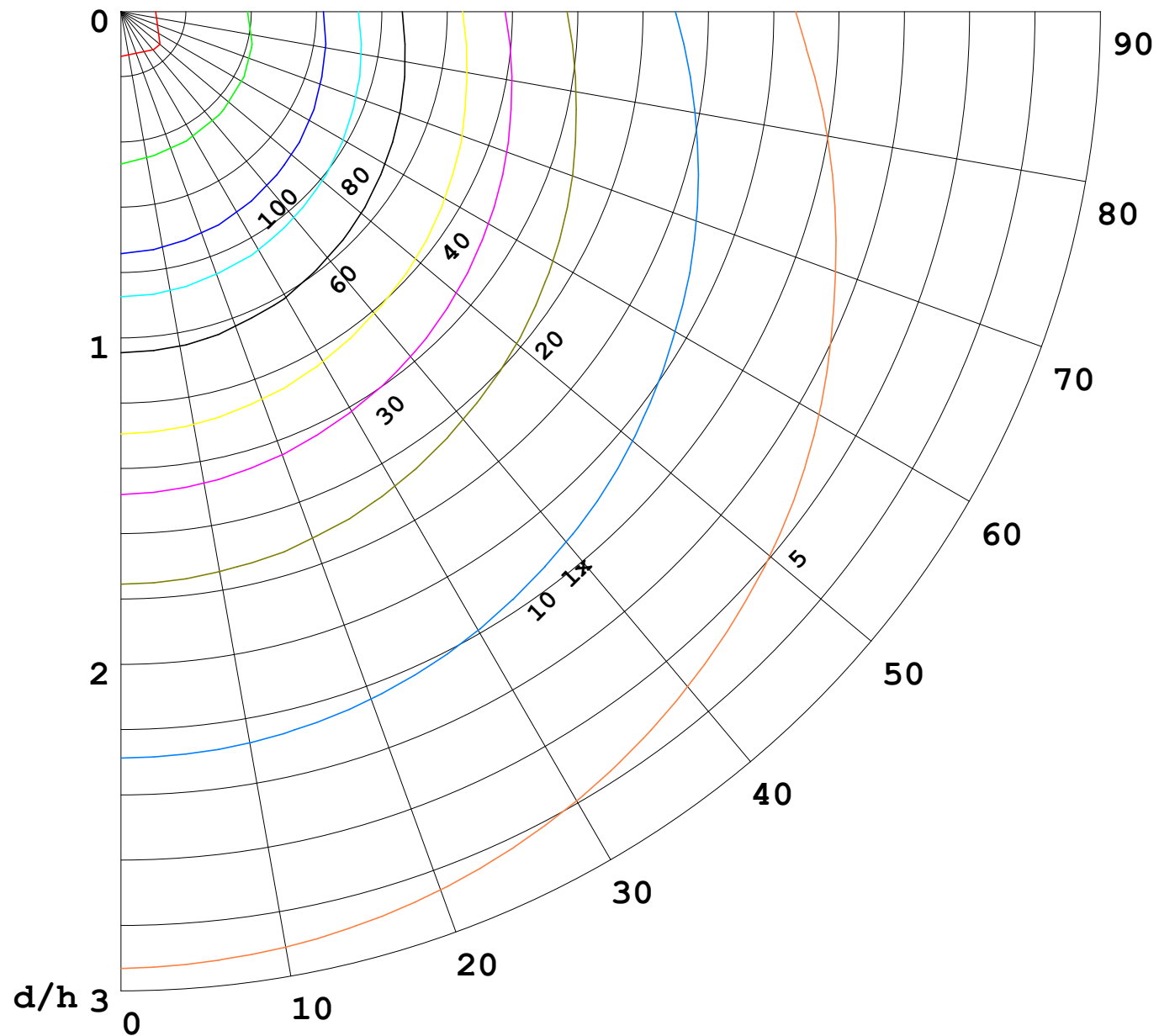
γ Range: 0 - 180DEG
 γ Interval: 1.0DEG
 Test System: EVERFINE GO-2000B_V1 SYSTEM V2.0.362
 Humidity: 65.0%
 Test Distance: 9.200m [K=1.0000]
 Remarks:

I (cd)



1000 lm

$\kappa = 1$



F = 5000 lm
 K = 0.7
 Hcc = 0.0 m
 Hfc = 0.0 m
 Eave = 100 lx

	Pcc	Pw	Pfc
—	70	50	30
—	50	30	20

