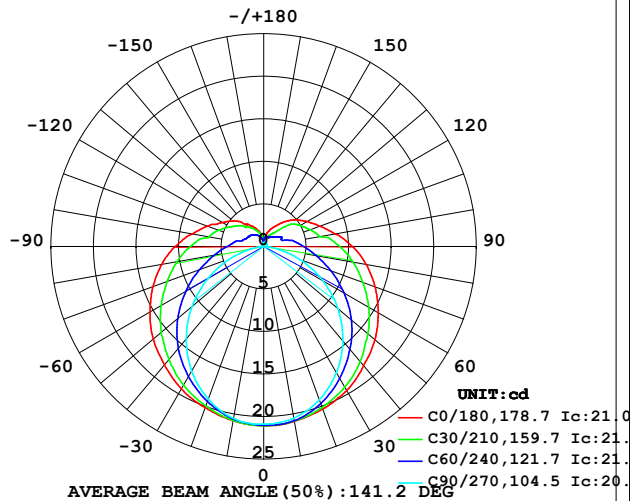


LUMINAIRE PHOTOMETRIC TEST REPORT

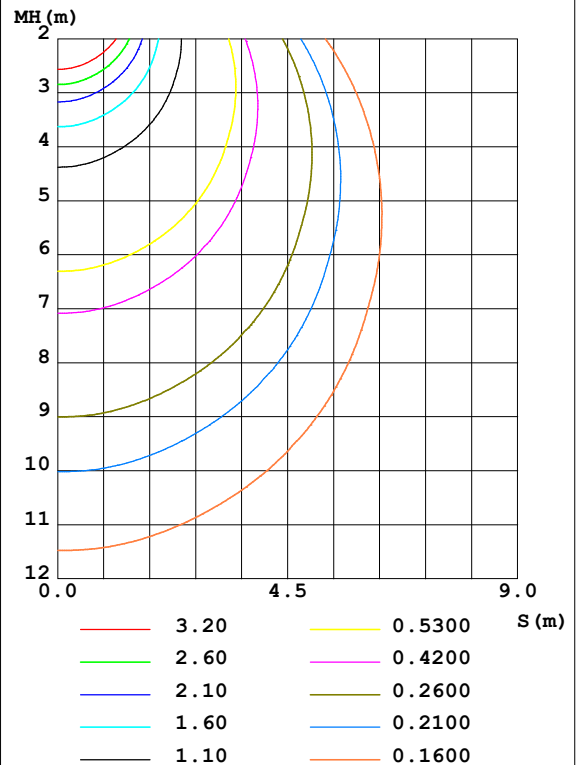
Test:U:12.00V I:0.3555A P:4.266W PF:1.000 Freq:50.00Hz Lamp Flux:100.338x1 lm		
NAME: SF21-12V-3528-72-6500-80	TYPE: 硅胶	WEIGHT:
SPEC.:	DIM.: 28mm*11.5mm	SERIAL No.:2021120605
MFR.: OLYMPIA	SUR.:1*0.016	Shielding Angle:

DATA OF LAMP		PHOTOMETRIC DATA Eff: 23.52 lm/W			
MODEL	3528	I _{max} (cd)	21.08	S/MH (C0/180)	1.38
NOMINAL POWER (W)	5	LOR (%)	100.0	S/MH (C90/270)	1.21
RATED VOLTAGE (V)	12	TOTAL FLUX (lm)	100.34	η UP, DN (C0-180)	10.0, 38.6
NOMINAL FLUX (lm)	100.338	CIE CLASS	SEMI-D.	η UP, DN (C180-360)	11.3, 40.1
LAMPS INSIDE	1	η up (%)	21.3	CIBSE SHR NOM	1.50
TEST VOLTAGE (V)	12	η down (%)	78.7	CIBSE SHR MAX	1.55

LUMINOUS INTENSITY DISTRIBUTION DIAGRAM



C0 PLANE ISOLUX DIAGRAM (UNIT: lx)



C Range: 0 - 360DEG
 C Interval: 30.0DEG
 Test Speed: HIGH
 Temperature: 25.3DEG
 Operators: LPC
 Test Date: 2021-12-06

γ Range: 0 - 180DEG
 γ Interval: 1.0DEG
 Test System: EVERFINE GO-2000B_V1 SYSTEM V2.0.362
 Humidity: 65.0%
 Test Distance: 9.200m [K=1.0000]
 Remarks:

ZONAL FLUX DIAGRAM

ZONAL FLUX DIAGRAM:

γ	C0	C45	C90	C135	C180	C225	C270	C315	γ	Φ zone	Φ total	%lum, lamp
10	20.88	20.82	20.50	20.13	20.80	20.69	20.53	20.78	0- 10	1.984	1.984	1.98,1.98
20	20.32	19.90	19.18	19.01	20.16	19.66	19.11	20.09	10- 20	5.710	7.694	7.67,7.67
30	19.54	18.49	17.12	17.40	19.35	18.26	16.93	18.82	20- 30	8.770	16.46	16.4,16.4
40	18.30	16.72	14.48	15.54	18.16	16.47	14.18	17.32	30- 40	10.88	27.35	27.3,27.3
50	17.07	14.73	11.40	13.41	16.95	14.46	11.00	15.53	40- 50	11.92	39.27	39.1,39.1
60	15.55	12.58	8.018	11.22	15.45	12.25	7.596	13.51	50- 60	11.89	51.16	51,51
70	13.94	10.43	4.555	9.067	13.85	10.07	4.124	11.43	60- 70	10.91	62.07	61.9,61.9
80	12.24	8.471	1.455	7.189	12.17	8.116	1.153	9.468	70- 80	9.306	71.38	71.1,71.1
90	10.45	6.830	0.2715	5.644	10.40	6.478	0.1864	7.823	80- 90	7.587	78.96	78.7,78.7
100	8.532	5.159	0.3093	4.340	8.507	4.978	0.1909	5.922	90-100	6.132	85.10	84.8,84.8
110	7.033	4.035	0.3364	3.527	7.055	4.064	0.2135	4.694	100-110	4.642	89.74	89.4,89.4
120	5.876	3.611	0.3669	2.857	5.658	3.410	0.2261	4.272	110-120	3.629	93.37	93.1,93.1
130	4.876	2.884	0.3921	2.387	4.688	2.938	0.2830	3.596	120-130	2.778	96.15	95.8,95.8
140	3.801	1.924	0.4155	1.925	3.325	2.450	0.3165	2.506	130-140	1.922	98.07	97.7,97.7
150	2.770	1.435	0.4499	1.445	2.788	1.980	0.3633	1.938	140-150	1.191	99.26	98.9,98.9
160	2.016	1.186	0.4583	0.9043	2.015	1.515	0.3970	1.560	150-160	0.6855	99.95	99.6,99.6
170	0.9049	1.065	0.4666	0.5711	0.8337	1.035	0.4447	1.434	160-170	0.3153	100.3	99.9,99.9
180	0.4975	0.4875	0.4774	0.5528	0.4975	0.4674	0.4523	0.5478	170-180	0.0778	100.3	100,100
DEG	LUMINOUS INTENSITY:cd									UNIT:lm		

Conical surface Flux(90deg): 33.248 lm

%lum = 33.1%

%lamp = 33.1%

Conical surface Flux(120deg): 51.165 lm

%lum = 51.0%

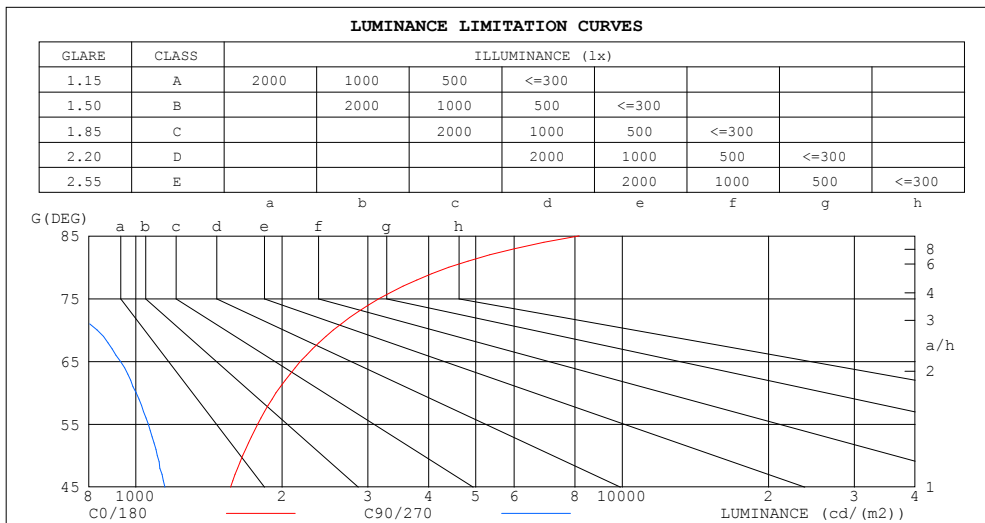
%lamp = 51.0%

C Range: 0 - 360DEG
 C Interval: 30.0DEG
 Test Speed: HIGH
 Temperature:25.3DEG
 Operators:LPC
 Test Date:2021-12-06

γ Range: 0 - 180DEG
 γ Interval: 1.0DEG
 Test System:EVERFINE GO-2000B_V1 SYSTEM V2.0.362
 Humidity:65.0%
 Test Distance:9.200m [K=1.0000]
 Remarks:

LUMINANCE LIMITATION CURVES

Test:U:12.00V I:0.3555A P:4.266W PF:1.000 Freq:50.00Hz Lamp Flux:100.338x1 lm		
NAME: SF21-12V-3528-72-6500-80	TYPE: 硅胶	WEIGHT:
SPEC.:	DIM.: 28mm*11.5mm	SERIAL No.:2021120605
MFR.: OLYMPIA	SUR.:1*0.016	Shielding Angle:



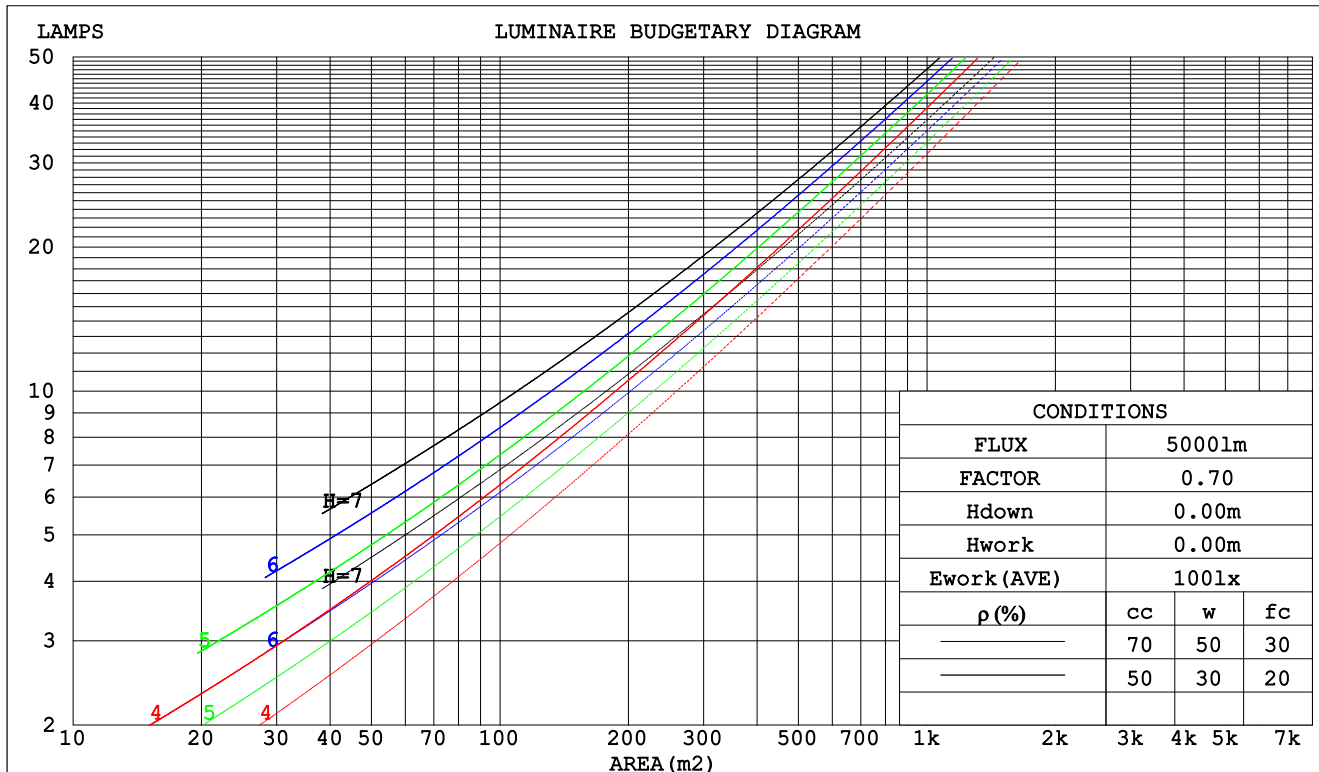
C Range: 0 - 360DEG
C Interval: 30.0DEG
Test Speed: HIGH
Temperature:25.3DEG
Operators:LPC
Test Date:2021-12-06

γ Range: 0 - 180DEG
 γ Interval: 1.0DEG
Test System:EVERFINE GO-2000B_V1 SYSTEM V2.0.362
Humidity:65.0%
Test Distance:9.200m [K=1.0000]
Remarks:

CU AND LUMINAIRE BUDGETARY ESTIMATE DIAGRAM

Test:U:12.00V I:0.3555A P:4.266W PF:1.000 Freq:50.00Hz Lamp Flux:100.338x1 lm		
NAME: SF21-12V-3528-72-6500-80	TYPE: 硅胶	WEIGHT:
SPEC.:	DIM.: 28mm*11.5mm	SERIAL No.:2021120605
MFR.: OLYMPIA	SUR.:1*0.016	Shielding Angle:

pcc	80%			70%			50%			30%			10%			0
pw	50%	30%	10%	50%	30%	10%	50%	30%	10%	50%	30%	10%	50%	30%	10%	0
pfc	20%			20%			20%			20%			20%			0
RCR	RCR:Room Cavity Ratio			Coefficients of Utilization(CU)												
0.0	1.14	1.14	1.14	1.09	1.09	1.09	.99	.99	.99	.91	.91	.91	.82	.82	.82	.79
1.0	.95	.90	.85	.90	.86	.81	.82	.78	.75	.75	.72	.69	.68	.65	.63	.59
2.0	.81	.73	.67	.77	.70	.64	.70	.64	.59	.64	.59	.55	.58	.54	.51	.47
3.0	.70	.61	.54	.67	.59	.52	.61	.54	.49	.55	.50	.45	.50	.46	.42	.39
4.0	.62	.52	.45	.59	.50	.44	.54	.47	.41	.49	.43	.38	.44	.39	.35	.32
5.0	.55	.45	.38	.52	.44	.37	.48	.40	.35	.44	.37	.32	.40	.34	.30	.27
6.0	.49	.40	.33	.47	.38	.32	.43	.36	.30	.39	.33	.28	.36	.30	.26	.24
7.0	.44	.35	.29	.42	.34	.28	.39	.32	.26	.36	.29	.25	.33	.27	.23	.21
8.0	.40	.31	.26	.39	.30	.25	.35	.28	.23	.33	.26	.22	.30	.25	.21	.18
9.0	.37	.28	.23	.35	.27	.22	.33	.26	.21	.30	.24	.20	.28	.22	.19	.16
10.0	.34	.26	.20	.32	.25	.20	.30	.23	.19	.28	.22	.18	.26	.20	.17	.15



C Range: 0 - 360DEG
 C Interval: 30.0DEG
 Test Speed: HIGH
 Temperature:25.3DEG
 Operators:LPC
 Test Date:2021-12-06

γ Range: 0 - 180DEG
 γ Interval: 1.0DEG
 Test System:EVERFINE GO-2000B_V1 SYSTEM V2.0.362
 Humidity:65.0%
 Test Distance:9.200m [K=1.0000]
 Remarks:

WEC AND CCEC

Test:U:12.00V I:0.3555A P:4.266W PF:1.000 Freq:50.00Hz Lamp Flux:100.338x1 lm		
NAME: SF21-12V-3528-72-6500-80	TYPE: 硅胶	WEIGHT:
SPEC.:	DIM.: 28mm*11.5mm	SERIAL No.:2021120605
MFR.: OLYMPIA	SUR.:1*0.016	Shielding Angle:

pcc	80%			70%			50%			30%			10%			0	
pw	50%	30%	10%	50%	30%	10%	50%	30%	10%	50%	30%	10%	50%	30%	10%	0	
pfc	20%			20%			20%			20%			20%			0	
RCR	RCR:Room Cavity Ratio						Wall Exitance Coefficients(WEC)										
0.0																	
1.0	.385	.219	.069	.371	.212	.067	.345	.198	.063	.322	.186	.060	.300	.174	.056		
2.0	.332	.182	.056	.320	.176	.054	.296	.165	.051	.275	.154	.048	.255	.144	.045		
3.0	.295	.157	.047	.283	.152	.046	.262	.142	.043	.243	.133	.041	.225	.124	.039		
4.0	.265	.138	.040	.255	.133	.039	.236	.125	.037	.218	.117	.035	.201	.109	.033		
5.0	.241	.123	.036	.232	.119	.035	.214	.112	.033	.198	.104	.031	.183	.098	.029		
6.0	.221	.111	.032	.212	.107	.031	.196	.101	.029	.181	.094	.028	.168	.088	.026		
7.0	.204	.101	.029	.196	.098	.028	.181	.092	.026	.168	.086	.025	.155	.080	.024		
8.0	.189	.092	.026	.182	.089	.025	.168	.084	.024	.156	.079	.023	.144	.074	.022		
9.0	.176	.085	.024	.169	.083	.023	.157	.078	.022	.145	.073	.021	.134	.068	.020		
10.0	.165	.079	.022	.159	.077	.021	.147	.072	.020	.136	.068	.019	.126	.063	.018		

pcc	80%			70%			50%			30%			10%			0	
pw	50%	30%	10%	50%	30%	10%	50%	30%	10%	50%	30%	10%	50%	30%	10%	0	
pfc	20%			20%			20%			20%			20%			0	
RCR	RCR:Room Cavity Ratio						Ceiling Cavity Exitance Coefficients(CCEC)										
0.0	.353	.353	.353	.301	.301	.301	.206	.206	.206	.118	.118	.118	.038	.038	.038		
1.0	.349	.319	.292	.299	.274	.251	.204	.188	.174	.118	.109	.101	.038	.035	.033		
2.0	.342	.296	.258	.293	.255	.223	.201	.177	.155	.116	.103	.091	.037	.033	.030		
3.0	.335	.280	.236	.287	.242	.205	.197	.168	.144	.114	.098	.085	.037	.032	.028		
4.0	.327	.268	.222	.281	.231	.193	.193	.161	.136	.112	.094	.080	.036	.031	.026		
5.0	.319	.258	.213	.274	.223	.185	.189	.156	.131	.109	.092	.077	.035	.030	.026		
6.0	.312	.250	.206	.268	.217	.179	.185	.152	.127	.107	.089	.075	.035	.029	.025		
7.0	.305	.244	.200	.262	.211	.175	.181	.148	.124	.105	.087	.074	.034	.029	.024		
8.0	.298	.238	.196	.257	.206	.171	.178	.145	.122	.103	.085	.072	.033	.028	.024		
9.0	.292	.233	.193	.252	.202	.169	.174	.142	.120	.102	.084	.071	.033	.028	.024		
10.0	.286	.229	.191	.247	.199	.167	.171	.140	.118	.100	.083	.071	.032	.027	.023		

C Range: 0 - 360DEG
 C Interval: 30.0DEG
 Test Speed: HIGH
 Temperature:25.3DEG
 Operators:LPC
 Test Date:2021-12-06

γ Range: 0 - 180DEG
 γ Interval: 1.0DEG
 Test System:EVERFINE GO-2000B_V1 SYSTEM V2.0.362
 Humidity:65.0%
 Test Distance:9.200m [K=1.0000]
 Remarks:

UGR(Unified Glare Rating) Table

Test:U:12.00V I:0.3555A P:4.266W PF:1.000 Freq:50.00Hz Lamp Flux:100.338x1 lm											
NAME: SF21-12V-3528-72-6500-80						TYPE:硅胶			WEIGHT:		
SPEC.:						DIM.: 28mm*11.5mm			SERIAL No.:2021120605		
MFR.: OLYMPIA						SUR.:1*0.016			Shielding Angle:		
ceiling/cavity	0.7	0.7	0.5	0.5	0.3	0.7	0.7	0.5	0.5	0.3	
walls	0.5	0.3	0.5	0.3	0.3	0.5	0.3	0.5	0.3	0.3	
working plane	0.2	0.2	0.2	0.2	0.2	0.2	0.2	0.2	0.2	0.2	
Room dimensions		Viewed crosswise					Viewed endwise				
x = 2H y = 2H	22.0	23.4	22.6	23.9	24.5	19.6	20.9	20.1	21.5	22.1	
	3H	24.8	26.0	25.4	26.6	27.2	21.0	22.2	21.6	22.8	23.5
	4H	26.3	27.5	26.9	28.1	28.8	21.5	22.7	22.1	23.3	24.0
	6H	28.0	29.1	28.6	29.7	30.4	21.9	23.0	22.5	23.6	24.3
	8H	29.0	30.0	29.6	30.7	31.4	21.9	23.0	22.6	23.6	24.4
	12H	30.1	31.1	30.7	31.7	32.5	22.0	23.0	22.6	23.6	24.4
4H	2H	22.6	23.7	23.2	24.3	25.0	20.8	22.0	21.4	22.6	23.3
	3H	25.6	26.6	26.2	27.2	28.0	22.6	23.6	23.2	24.2	25.0
	4H	27.3	28.2	28.0	28.9	29.7	23.3	24.3	24.0	24.9	25.7
	6H	29.2	30.1	29.9	30.8	31.6	23.9	24.8	24.6	25.5	26.3
	8H	30.3	31.1	31.0	31.8	32.6	24.1	24.9	24.8	25.6	26.4
	12H	31.5	32.3	32.3	33.0	33.8	24.2	25.0	24.9	25.7	26.5
8H	4H	27.6	28.4	28.3	29.1	30.0	24.6	25.3	25.3	26.0	26.9
	6H	29.9	30.6	30.6	31.3	32.1	25.6	26.3	26.3	27.0	27.9
	8H	31.2	31.8	31.9	32.5	33.4	26.1	26.6	26.8	27.4	28.3
	12H	32.7	33.2	33.4	34.0	34.9	26.4	26.9	27.2	27.7	28.6
12H	4H	27.7	28.4	28.4	29.1	29.9	25.0	25.7	25.7	26.4	27.2
	6H	30.0	30.6	30.8	31.3	32.2	26.3	26.9	27.0	27.6	28.5
	8H	31.4	31.9	32.2	32.7	33.6	26.9	27.5	27.7	28.2	29.1
Variations with the observer position at spacings:											
S = 1.0H	+ 0.1 / - 0.1					+ 0.1 / - 0.1					
1.5H	+ 0.2 / - 0.3					+ 0.2 / - 0.3					
2.0H	+ 0.2 / - 0.3					+ 0.2 / - 0.4					

CIE Pub.117, 100.3 lm Total Lamp Luminous Flux Correct (8log(F/F0) = -8.0)

C Range: 0 - 360DEG
C Interval: 30.0DEG
Test Speed: HIGH
Temperature:25.3DEG
Operators:LPC
Test Date:2021-12-06

γ Range: 0 - 180DEG
γ Interval: 1.0DEG
Test System:EVERFINE GO-2000B_V1 SYSTEM V2.0.362
Humidity:65.0%
Test Distance:9.200m [K=1.0000]
Remarks:

UTILIZATION FACTORS TABLE

Test:U:12.00V I:0.3555A P:4.266W PF:1.000 Freq:50.00Hz Lamp Flux:100.338x1 lm		
NAME: SF21-12V-3528-72-6500-80	TYPE: 硅胶	WEIGHT:
SPEC.:	DIM.: 28mm*11.5mm	SERIAL No.:2021120605
MFR.: OLYMPIA	SUR.:1*0.016	Shielding Angle:

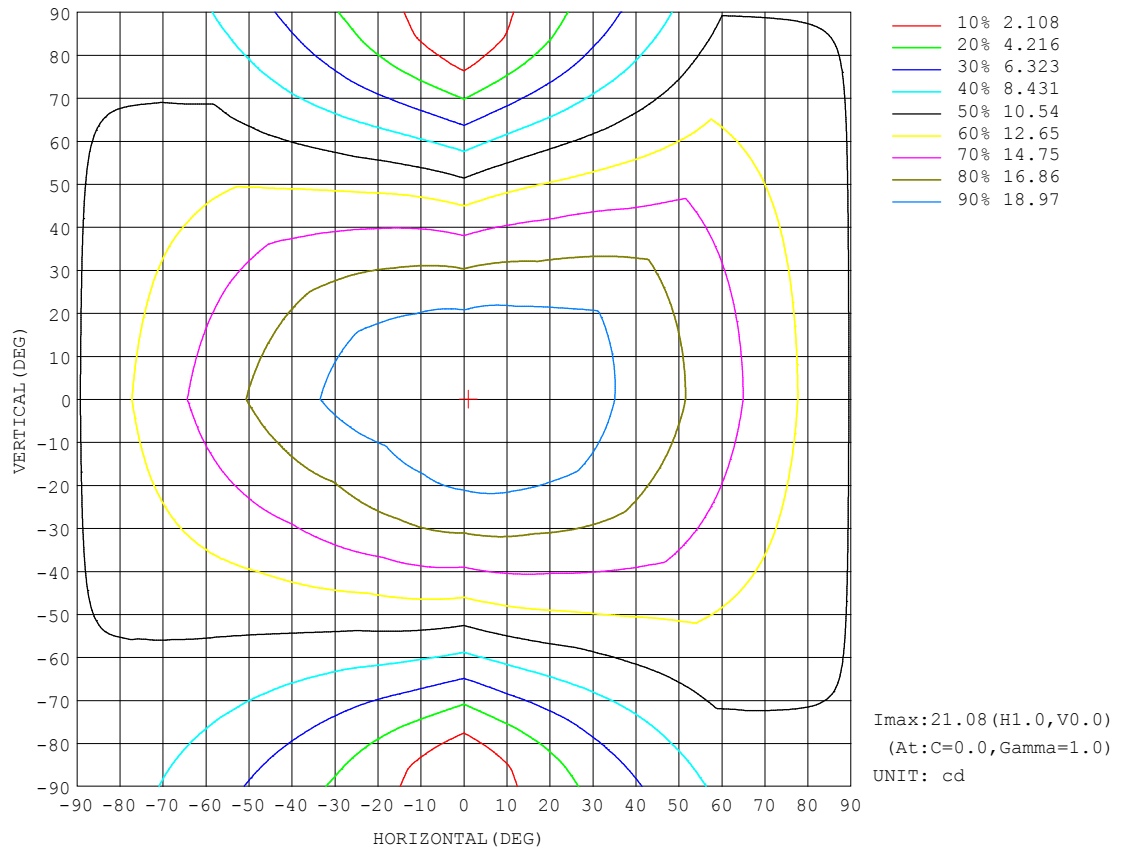
REFLECTANCE										
Ceiling	0.8	0.8	0.8	0.7	0.7	0.7	0.5	0.5	0.5	0
Walls	0.7	0.5	0.3	0.7	0.5	0.3	0.7	0.5	0.3	0
Working plane	0.2	0.2	0.2	0.2	0.2	0.2	0.2	0.2	0.2	0
ROOM INDEX	UTILIZATION FACTORS (PERCENT) $k(RI) \times RCR = 5$									
$k = 0.60$	47	34	27	46	34	27	44	33	26	20
0.80	56	43	35	54	42	34	51	40	33	25
1.00	64	51	42	62	49	42	58	50	40	31
1.25	70	58	49	68	56	48	63	53	46	36
1.50	76	63	55	73	62	53	67	58	51	40
2.00	83	72	63	80	69	62	73	65	59	46
2.50	87	77	69	84	74	67	77	69	63	50
3.00	91	82	74	87	79	72	80	73	68	53
4.00	96	88	81	92	84	78	84	78	73	58
5.00	99	92	86	95	88	83	86	81	77	61
ROOM INDEX	UF (total)									Direct
According to DIN EN 13032-2 2004			Suspended					SHRNOM = 1.25		

C Range: 0 - 360DEG
C Interval: 30.0DEG
Test Speed: HIGH
Temperature:25.3DEG
Operators:LPC
Test Date:2021-12-06

γ Range: 0 - 180DEG
 γ Interval: 1.0DEG
Test System:EVERFINE GO-2000B_V1 SYSTEM V2.0.362
Humidity:65.0%
Test Distance:9.200m [K=1.0000]
Remarks:

ISOCANDELA DIAGRAM

Test:U:12.00V I:0.3555A P:4.266W PF:1.000 Freq:50.00Hz Lamp Flux:100.338x1 lm		
NAME: SF21-12V-3528-72-6500-80	TYPE: 硅胶	WEIGHT:
SPEC.:	DIM.: 28mm*11.5mm	SERIAL No.:2021120605
MFR.: OLYMPIA	SUR.:1*0.016	Shielding Angle:

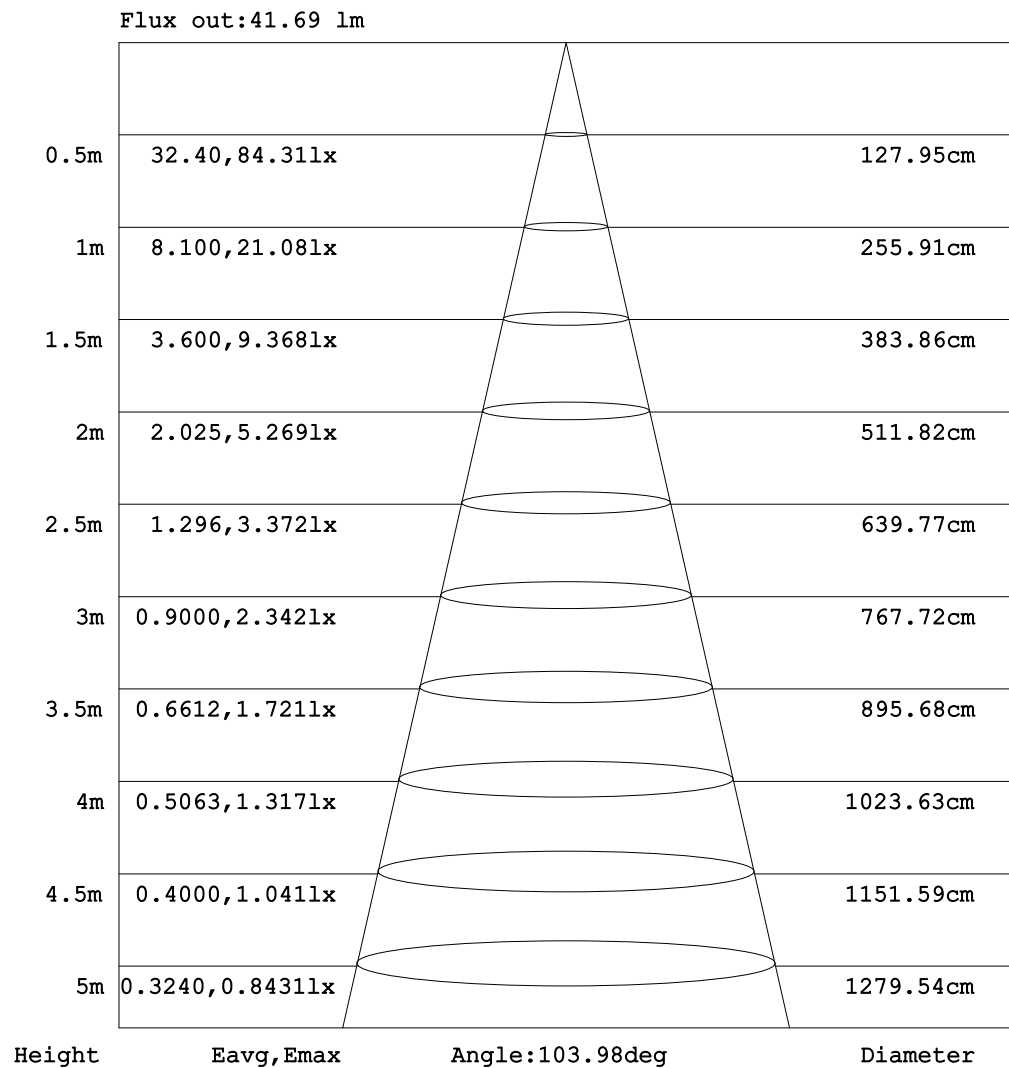


C Range: 0 - 360DEG
C Interval: 30.0DEG
Test Speed: HIGH
Temperature:25.3DEG
Operators:LPC
Test Date:2021-12-06

γ Range: 0 - 180DEG
γ Interval: 1.0DEG
Test System:EVERFINE GO-2000B_V1 SYSTEM V2.0.362
Humidity:65.0%
Test Distance:9.200m [K=1.0000]
Remarks:

AAI Figure

Test:U:12.00V I:0.3555A P:4.266W PF:1.000 Freq:50.00Hz Lamp Flux:100.338x1 lm		
NAME: SF21-12V-3528-72-6500-80	TYPE: 硅胶	WEIGHT:
SPEC.:	DIM.: 28mm*11.5mm	SERIAL No.:2021120605
MFR.: OLYMPIA	SUR.:1*0.016	Shielding Angle:



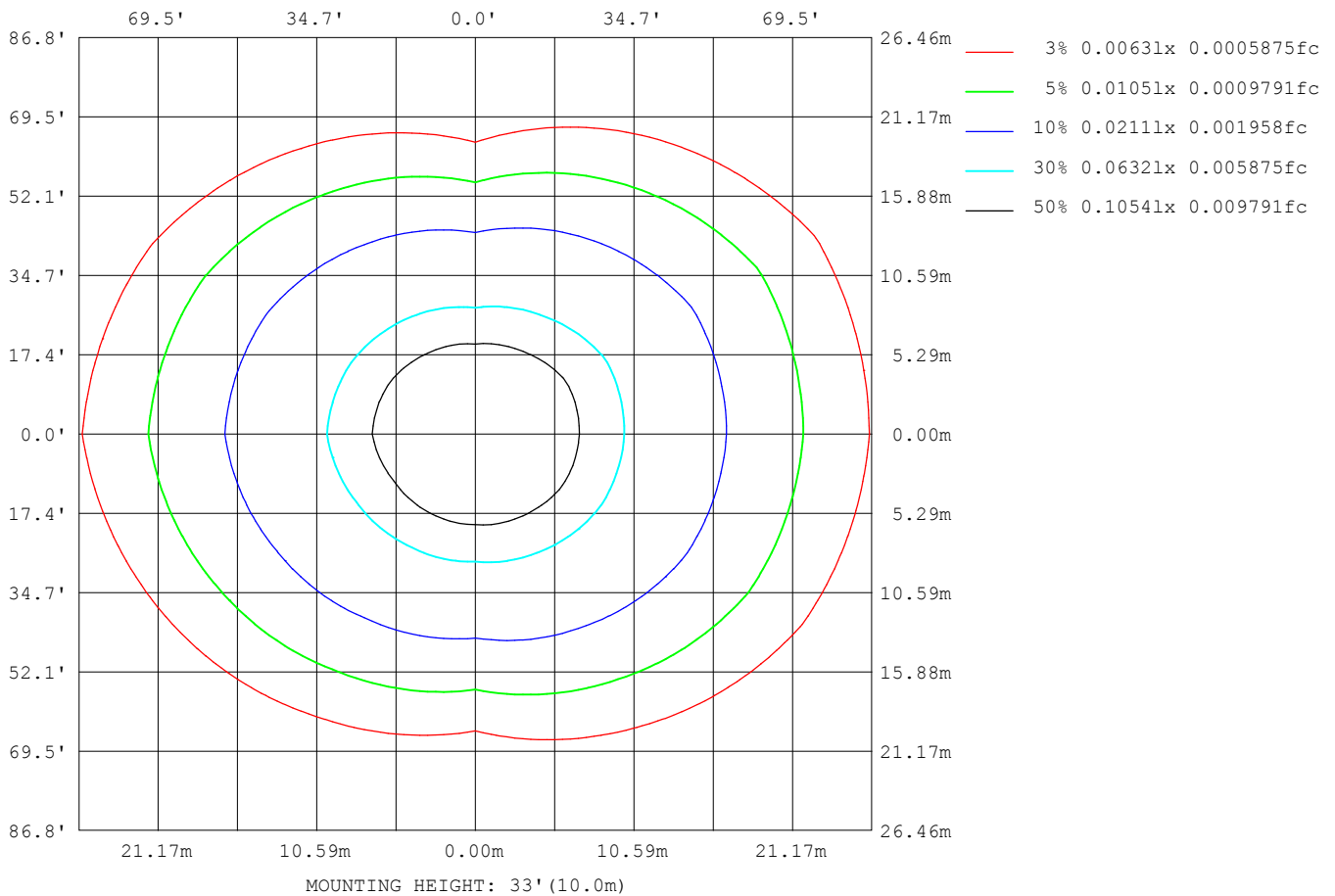
Note: The Curves indicate the illuminated area and the average illumination when the luminaire is at different distance.

C Range: 0 - 360DEG
 C Interval: 30.0DEG
 Test Speed: HIGH
 Temperature: 25.3DEG
 Operators: LPC
 Test Date: 2021-12-06

γ Range: 0 - 180DEG
 γ Interval: 1.0DEG
 Test System: EVERFINE GO-2000B_V1 SYSTEM V2.0.362
 Humidity: 65.0%
 Test Distance: 9.200m [K=1.0000]
 Remarks:

ISOLUX DIAGRAM

Test:U:12.00V I:0.3555A P:4.266W PF:1.000 Freq:50.00Hz Lamp Flux:100.338x1 lm		
NAME: SF21-12V-3528-72-6500-80	TYPE: 硅胶	WEIGHT:
SPEC.:	DIM.: 28mm*11.5mm	SERIAL No.:2021120605
MFR.: OLYMPIA	SUR.:1*0.016	Shielding Angle:



C Range: 0 - 360DEG
C Interval: 30.0DEG
Test Speed: HIGH
Temperature:25.3DEG
Operators:LPC
Test Date:2021-12-06

γ Range: 0 - 180DEG
 γ Interval: 1.0DEG
Test System:EVERFINE GO-2000B_V1 SYSTEM V2.0.362
Humidity:65.0%
Test Distance:9.200m [K=1.0000]
Remarks:

LED Avg.L Report

Test:U:12.00V I:0.3555A P:4.266W PF:1.000 Freq:50.00Hz Lamp Flux:100.338x1 lm		
NAME: SF21-12V-3528-72-6500-80	TYPE:硅胶	WEIGHT:
SPEC.:	DIM.: 28mm*11.5mm	SERIAL No.:2021120605
MFR.: OLYMPIA	SUR.:1*0.016	Shielding Angle:

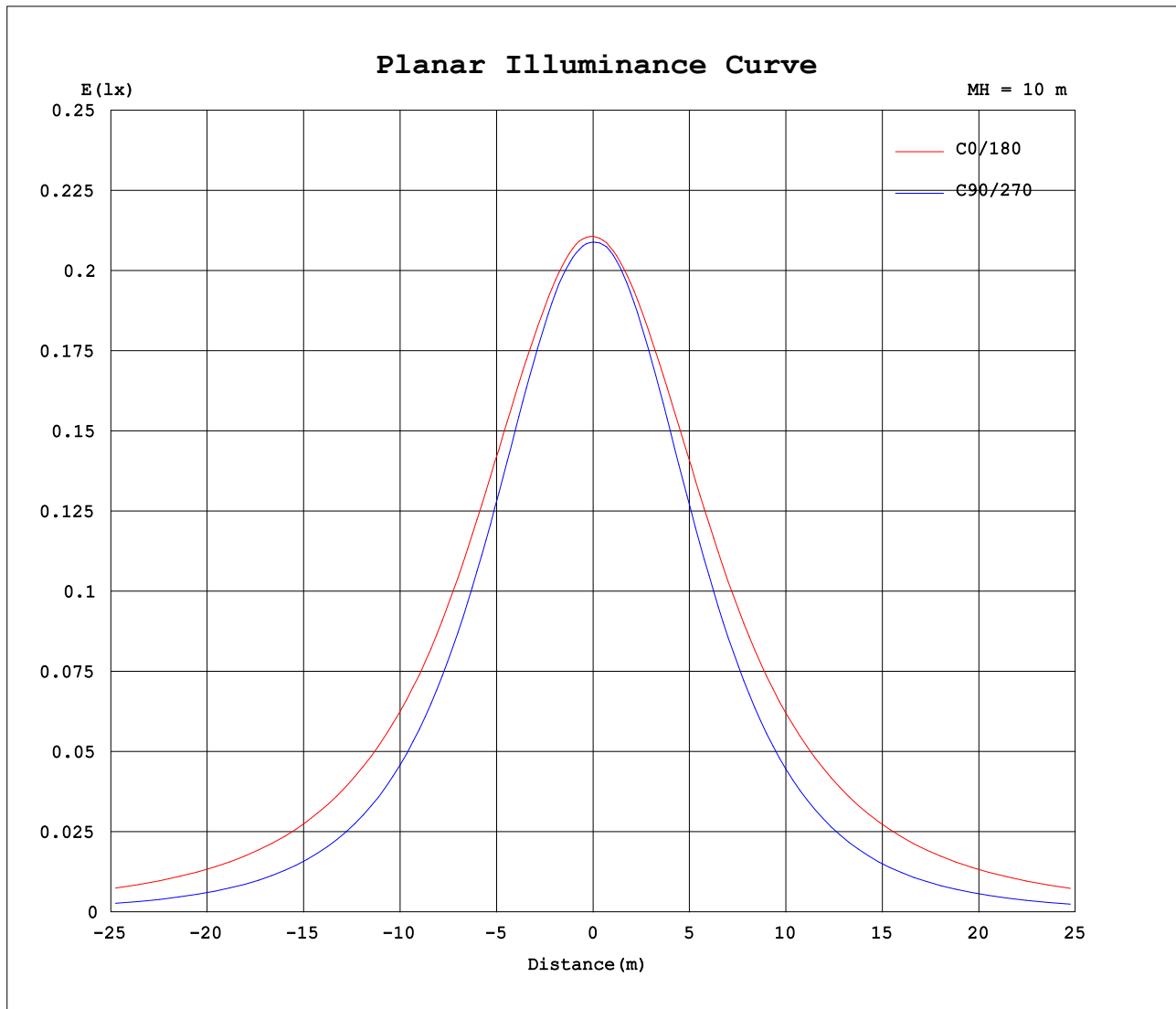
AvgL	cd/m2
L_0~180 (65) av	2175
L_0~180 (75) av	3155
L_0~180 (85) av	8131
L_90~270 (65) av	897
L_90~270 (75) av	654
L_90~270 (85) av	232
L_45 (65) av	1689
L_45 (75) av	2274
L_45 (85) av	5496

Standard: GB/T 29293-2012

C Range: 0 - 360DEG
C Interval: 30.0DEG
Test Speed: HIGH
Temperature:25.3DEG
Operators:LPC
Test Date:2021-12-06

γ Range: 0 - 180DEG
γ Interval: 1.0DEG
Test System:EVERFINE GO-2000B_V1 SYSTEM V2.0.362
Humidity:65.0%
Test Distance:9.200m [K=1.0000]
Remarks:

Planar Illuminance Curve



C Range: 0 - 360DEG
C Interval: 30.0DEG
Test Speed: HIGH
Temperature: 25.3DEG
Operators: LPC
Test Date: 2021-12-06

γ Range: 0 - 180DEG
 γ Interval: 1.0DEG
Test System: EVERFINE GO-2000B_V1 SYSTEM V2.0.362
Humidity: 65.0%
Test Distance: 9.200m [K=1.0000]
Remarks:

LUMINOUS DISTRIBUTION INTENSITY DATA

Test:U:12.00V I:0.3555A P:4.266W PF:1.000 Freq:50.00Hz Lamp Flux:100.338x1 lm		
NAME: SF21-12V-3528-72-6500-80	TYPE: 硅胶	WEIGHT:
SPEC.:	DIM.: 28mm*11.5mm	SERIAL No.:2021120605
MFR.: OLYMPIA	SUR.:1*0.016	Shielding Angle:

Table--1

UNIT: cd

C (DEG) γ (DEG)	0	30	60	90	120	150	180	210	240	270	300	330						
0	21.1	21.1	21.0	20.9	20.8	20.7	21.1	21.1	21.0	20.9	20.8	20.7						
5	21.1	21.0	21.0	20.8	20.6	20.4	21.0	21.0	20.9	20.9	20.8	20.9						
10	20.9	20.8	20.8	20.5	20.2	20.0	20.8	20.8	20.6	20.5	20.7	20.9						
15	20.6	20.5	20.3	19.9	19.6	19.6	20.5	20.4	20.1	19.9	20.3	20.8						
20	20.3	20.1	19.7	19.2	18.9	19.1	20.2	19.9	19.4	19.1	19.7	20.5						
25	20.0	19.6	18.8	18.2	18.1	18.4	19.8	19.4	18.6	18.1	18.9	20.1						
30	19.5	19.1	17.9	17.1	17.1	17.7	19.4	18.8	17.7	16.9	18.0	19.7						
35	19.0	18.4	16.9	15.9	16.1	16.9	18.8	18.1	16.7	15.6	17.0	19.2						
40	18.3	17.7	15.8	14.5	14.9	16.1	18.2	17.3	15.6	14.2	16.0	18.6						
45	17.7	16.8	14.7	13.0	13.7	15.3	17.6	16.5	14.4	12.6	15.0	17.9						
50	17.1	16.0	13.5	11.4	12.4	14.4	17.0	15.7	13.2	11.0	13.9	17.2						
55	16.3	15.1	12.2	9.74	11.2	13.4	16.2	14.8	11.9	9.31	12.7	16.3						
60	15.5	14.3	10.9	8.02	9.92	12.5	15.5	13.9	10.6	7.60	11.5	15.5						
65	14.7	13.3	9.63	6.29	8.66	11.6	14.7	13.0	9.30	5.84	10.2	14.7						
70	13.9	12.4	8.44	4.56	7.45	10.7	13.9	12.1	8.06	4.12	9.01	13.8						
75	13.1	11.5	7.28	2.91	6.39	9.81	13.0	11.2	6.89	2.50	7.88	13.0						
80	12.2	10.7	6.27	1.46	5.43	8.94	12.2	10.3	5.89	1.15	6.81	12.1						
85	11.4	9.80	5.41	0.40	4.63	8.09	11.3	9.49	5.03	0.25	5.92	11.3						
90	10.4	8.95	4.71	0.27	3.98	7.31	10.4	8.64	4.32	0.19	5.18	10.5						
95	9.54	8.13	4.14	0.29	3.51	6.62	9.52	7.84	3.78	0.19	4.55	9.66						
100	8.53	6.69	3.63	0.31	3.19	5.49	8.51	6.55	3.40	0.19	3.84	8.01						
105	7.75	6.30	2.96	0.32	2.36	5.19	7.75	6.14	2.62	0.21	3.31	7.51						
110	7.03	5.81	2.26	0.34	2.25	4.81	7.05	5.66	2.46	0.21	3.30	6.09						
115	6.42	5.36	2.38	0.35	2.05	4.15	6.21	5.10	2.27	0.22	2.92	6.24						
120	5.88	4.96	2.26	0.37	1.93	3.78	5.66	4.61	2.21	0.23	2.73	5.81						
125	5.37	4.57	1.98	0.38	1.76	3.44	5.15	4.19	2.13	0.26	2.52	5.34						
130	4.88	4.00	1.77	0.39	1.68	3.10	4.69	3.83	2.05	0.28	2.28	4.91						
135	4.36	3.10	1.62	0.40	1.59	2.73	4.19	3.47	1.92	0.29	1.99	4.13						
140	3.80	2.35	1.50	0.42	1.41	2.44	3.32	3.09	1.81	0.32	1.76	3.25						
145	3.24	1.90	1.37	0.43	1.27	2.09	3.18	2.74	1.64	0.35	1.60	2.83						
150	2.77	1.63	1.24	0.45	1.09	1.80	2.79	2.41	1.55	0.36	1.43	2.44						
155	2.39	1.41	1.20	0.45	0.88	1.52	2.42	2.11	1.40	0.38	1.43	2.07						
160	2.02	1.18	1.19	0.46	0.62	1.19	2.01	1.82	1.21	0.40	1.43	1.69						
165	1.68	1.06	1.18	0.46	0.50	0.83	1.75	1.58	1.01	0.44	1.42	1.47						
170	0.90	1.01	1.12	0.47	0.47	0.67	0.83	1.23	0.84	0.44	1.41	1.46						
175	0.74	0.84	0.95	0.47	0.46	0.54	0.67	0.91	0.55	0.45	1.33	1.45						
180	0.50	0.48	0.49	0.48	0.55	0.56	0.50	0.48	0.45	0.45	0.49	0.61						

C Range: 0 - 360DEG
C Interval: 30.0DEG
Test Speed: HIGH
Temperature:25.3DEG
Operators:LPC
Test Date:2021-12-06

γ Range: 0 - 180DEG
γ Interval: 1.0DEG
Test System:EVERFINE GO-2000B_V1 SYSTEM V2.0.362
Humidity:65.0%
Test Distance:9.200m [K=1.0000]
Remarks:

Photometric Data Table [cd]

G/C	0.0	30.0	60.0	90.0	120.0	150.0	180.0	210.0	240.0	270.0
0.0	21.08	21.06	21.02	20.89	20.82	20.70	21.08	21.06	21.02	20.89
3.0	21.08	21.05	21.02	20.86	20.70	20.53	21.03	21.06	20.97	20.90
6.0	21.03	21.00	20.98	20.75	20.53	20.33	20.96	20.96	20.86	20.82
9.0	20.93	20.89	20.85	20.57	20.30	20.11	20.84	20.82	20.69	20.62
12.0	20.78	20.73	20.64	20.29	20.01	19.89	20.70	20.63	20.41	20.31
15.0	20.61	20.54	20.31	19.93	19.63	19.61	20.51	20.41	20.07	19.92
18.0	20.44	20.29	19.94	19.50	19.23	19.32	20.30	20.14	19.66	19.46
21.0	20.26	20.05	19.51	19.00	18.76	18.98	20.10	19.84	19.24	18.92
24.0	20.06	19.74	19.01	18.43	18.27	18.56	19.89	19.54	18.75	18.30
27.0	19.82	19.43	18.47	17.79	17.72	18.12	19.64	19.21	18.22	17.65
30.0	19.54	19.10	17.89	17.12	17.14	17.67	19.35	18.84	17.67	16.93
33.0	19.21	18.70	17.28	16.39	16.52	17.20	19.02	18.43	17.09	16.14
36.0	18.85	18.29	16.66	15.59	15.87	16.74	18.66	17.97	16.49	15.34
39.0	18.44	17.82	16.00	14.76	15.17	16.30	18.29	17.49	15.84	14.46
42.0	18.04	17.32	15.35	13.90	14.45	15.81	17.92	17.00	15.16	13.56
45.0	17.72	16.79	14.66	12.98	13.70	15.29	17.56	16.53	14.45	12.63
48.0	17.34	16.30	13.95	12.00	12.95	14.75	17.20	16.03	13.71	11.67
51.0	16.94	15.83	13.22	11.07	12.20	14.20	16.81	15.54	12.93	10.67
54.0	16.50	15.33	12.46	10.07	11.46	13.62	16.38	15.04	12.14	9.672
57.0	16.03	14.80	11.69	9.044	10.70	13.06	15.93	14.47	11.36	8.637
60.0	15.55	14.26	10.90	8.018	9.923	12.51	15.45	13.93	10.58	7.596
63.0	15.07	13.69	10.12	6.997	9.175	11.95	14.96	13.36	9.807	6.557
66.0	14.59	13.14	9.396	5.923	8.416	11.42	14.48	12.80	9.054	5.501
69.0	14.11	12.60	8.687	4.922	7.687	10.87	14.01	12.27	8.305	4.461
72.0	13.61	12.07	7.974	3.872	7.004	10.32	13.52	11.74	7.581	3.461
75.0	13.11	11.55	7.285	2.912	6.385	9.809	13.02	11.20	6.888	2.501
78.0	12.59	11.02	6.666	1.993	5.787	9.276	12.52	10.70	6.270	1.616
81.0	12.06	10.49	6.088	1.194	5.264	8.753	12.00	10.16	5.697	0.9165
84.0	11.55	9.984	5.566	0.5812	4.776	8.251	11.49	9.666	5.190	0.3335
87.0	11.00	9.452	5.113	0.2763	4.344	7.774	10.95	9.158	4.738	0.2012
90.0	10.45	8.950	4.711	0.2715	3.982	7.306	10.40	8.636	4.321	0.1864
93.0	9.898	8.447	4.343	0.2874	3.680	6.879	9.858	8.138	3.979	0.1878
96.0	9.365	7.959	4.032	0.2965	3.438	6.492	9.346	7.676	3.693	0.1891
99.0	8.852	7.188	3.710	0.3066	3.242	5.588	8.767	6.633	3.472	0.1905
102.0	8.204	6.558	3.469	0.3147	3.052	5.392	8.200	6.393	3.278	0.2060
105.0	7.746	6.301	2.961	0.3229	2.358	5.191	7.748	6.142	2.618	0.2088
108.0	7.309	5.995	2.390	0.3310	2.262	4.960	7.321	5.846	2.568	0.2116
111.0	6.902	5.719	2.232	0.3391	2.217	4.622	6.919	5.490	2.422	0.2145
114.0	6.545	5.447	2.296	0.3468	2.081	4.246	6.386	5.227	2.291	0.2173
117.0	6.193	5.196	2.417	0.3618	2.001	3.980	5.984	4.891	2.221	0.2201
120.0	5.876	4.965	2.258	0.3669	1.930	3.784	5.658	4.615	2.206	0.2261
123.0	5.565	4.739	2.091	0.3759	1.717	3.573	5.346	4.363	2.151	0.2362
126.0	5.273	4.507	1.925	0.3820	1.783	3.372	5.060	4.122	2.116	0.2563
129.0	4.982	4.205	1.805	0.3970	1.739	3.176	4.773	3.891	2.070	0.2813
132.0	4.680	3.652	1.689	0.3954	1.649	2.965	4.487	3.699	2.000	0.2864
135.0	4.359	3.104	1.624	0.4004	1.588	2.733	4.190	3.468	1.925	0.2914
138.0	4.032	2.537	1.558	0.4121	1.488	2.552	3.822	3.190	1.844	0.2965
141.0	3.690	2.210	1.473	0.4172	1.377	2.362	3.144	3.021	1.754	0.3224
144.0	3.348	1.960	1.398	0.4222	1.282	2.180	3.281	2.800	1.673	0.3400
147.0	3.047	1.799	1.312	0.4474	1.207	1.970	2.985	2.604	1.588	0.3528
150.0	2.770	1.633	1.237	0.4499	1.086	1.804	2.788	2.413	1.548	0.3633
153.0	2.534	1.477	1.203	0.4524	0.9504	1.638	2.562	2.232	1.452	0.3769
156.0	2.333	1.347	1.198	0.4549	0.8298	1.462	2.366	2.051	1.357	0.3919
159.0	2.127	1.231	1.193	0.4574	0.6289	1.266	2.130	1.890	1.251	0.3920
162.0	1.885	1.095	1.188	0.4599	0.5788	1.050	1.909	1.744	1.125	0.4070
165.0	1.679	1.057	1.183	0.4624	0.4976	0.8285	1.748	1.578	1.015	0.4384
168.0	0.9653	1.031	1.151	0.4649	0.4755	0.6986	0.9141	1.373	0.9141	0.4422
171.0	0.8798	1.005	1.086	0.4674	0.4694	0.6445	0.7837	1.171	0.7886	0.4460
174.0	0.7645	0.8841	1.001	0.4700	0.4634	0.5660	0.6983	0.9556	0.6322	0.4498
177.0	0.6639	0.7128	0.7150	0.4725	0.4573	0.4875	0.6180	0.7646	0.4523	0.4523
180.0	0.4975	0.4825	0.4925	0.4774	0.5478	0.5579	0.4975	0.4825	0.4523	0.4523
G/C	300.0	330.0								
0.0	20.82	20.70								
3.0	20.81	20.81								
6.0	20.80	20.89								
9.0	20.72	20.89								
12.0	20.53	20.88								
15.0	20.27	20.83								
18.0	19.93	20.65								
21.0	19.53	20.44								
24.0	19.07	20.19								
27.0	18.54	19.93								
30.0	17.98	19.66								

C Range: 0 - 360DEG
 C Interval: 30.0DEG
 Test Speed: HIGH
 Temperature: 25.3DEG
 Operators: LPC
 Test Date: 2021-12-06

γ Range: 0 - 180DEG
 γ Interval: 1.0DEG
 Test System: EVERFINE GO-2000B_V1 SYSTEM V2.0.362
 Humidity: 65.0%
 Test Distance: 9.200m [K=1.0000]
 Remarks:

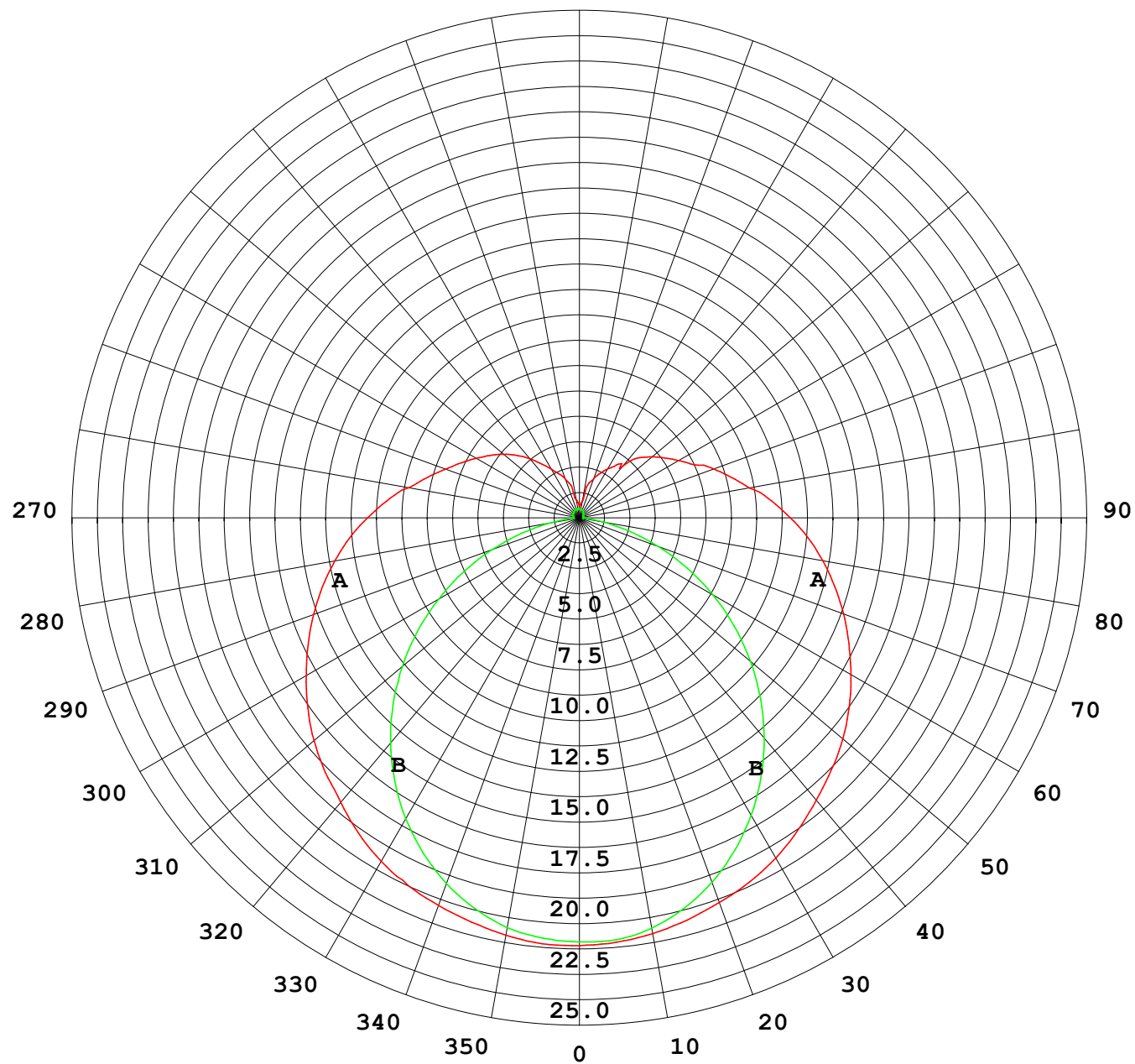
Photometric Data Table [cd]

33.0	17.41	19.38
36.0	16.83	19.06
39.0	16.23	18.72
42.0	15.62	18.35
45.0	14.99	17.93
48.0	14.36	17.48
51.0	13.67	17.00
54.0	12.96	16.49
57.0	12.23	15.97
60.0	11.50	15.53
63.0	10.74	15.05
66.0	9.978	14.55
69.0	9.235	14.03
72.0	8.551	13.49
75.0	7.878	12.97
78.0	7.225	12.46
81.0	6.627	11.97
84.0	6.089	11.48
87.0	5.602	10.96
90.0	5.175	10.47
93.0	4.808	9.972
96.0	4.370	9.495
99.0	3.969	8.519
102.0	3.548	7.821
105.0	3.312	7.505
108.0	3.372	6.357
111.0	3.240	6.261
114.0	3.134	6.328
117.0	2.929	6.062
120.0	2.733	5.810
123.0	2.613	5.529
126.0	2.462	5.258
129.0	2.321	5.017
132.0	2.186	4.575
135.0	1.990	4.127
138.0	1.864	3.610
141.0	1.718	3.227
144.0	1.628	2.941
147.0	1.533	2.684
150.0	1.432	2.443
153.0	1.428	2.232
156.0	1.429	1.996
159.0	1.430	1.770
162.0	1.432	1.563
165.0	1.422	1.468
168.0	1.413	1.463
171.0	1.405	1.459
174.0	1.352	1.454
177.0	1.169	1.422
180.0	0.4875	0.6081

C Range: 0 - 360DEG
C Interval: 30.0DEG
Test Speed: HIGH
Temperature:25.3DEG
Operators:LPC
Test Date:2021-12-06

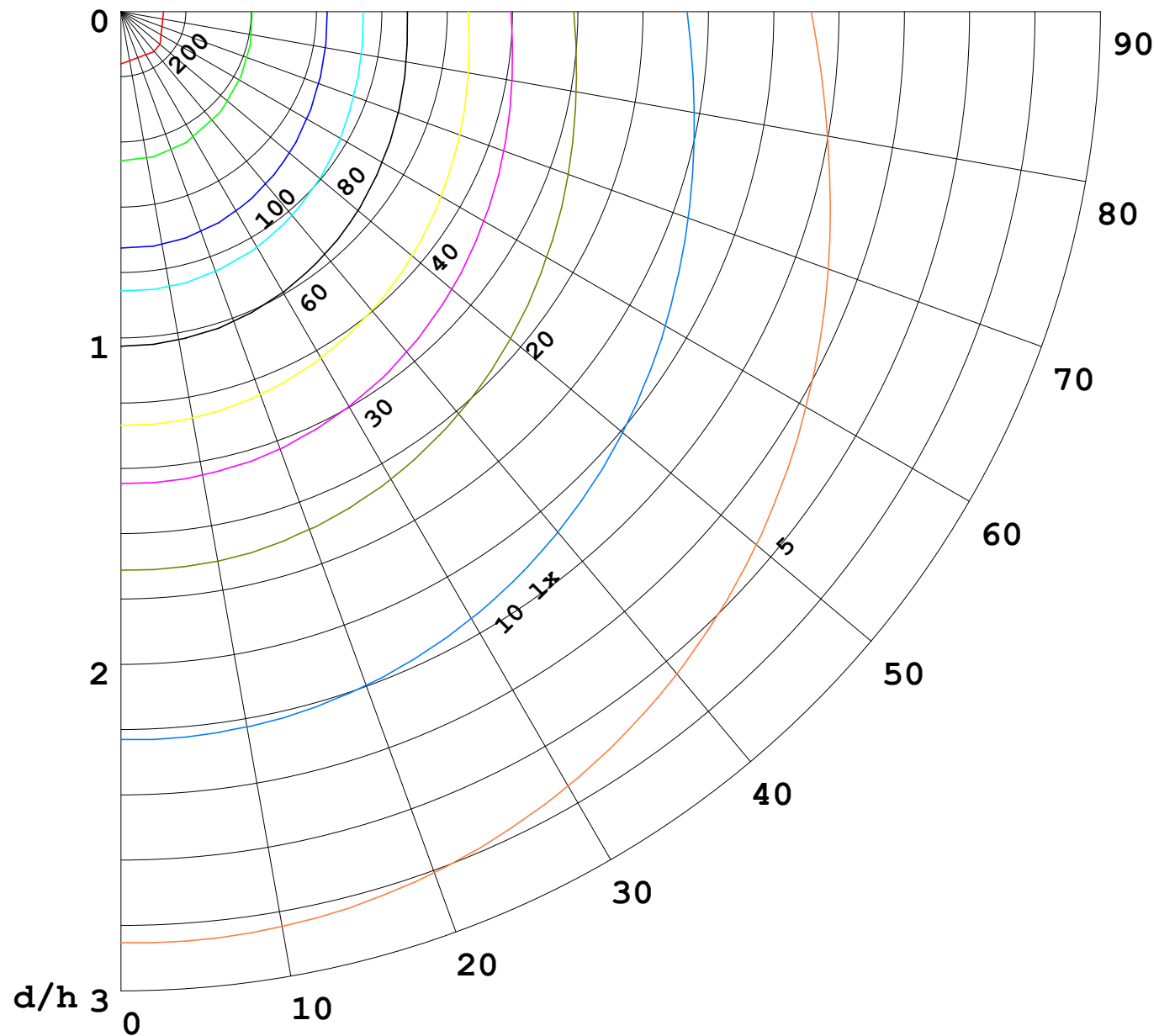
γ Range: 0 - 180DEG
γ Interval: 1.0DEG
Test System:EVERFINE GO-2000B_V1 SYSTEM V2.0.362
Humidity:65.0%
Test Distance:9.200m [K=1.0000]
Remarks:

I (cd)



1000 lm

$\kappa = 1$



F = 5000 lm
 K = 0.7
 Hcc = 0.0 m
 Hfc = 0.0 m
 Eave = 100 lx

	Pcc	Pw	Pfc
—	70	50	30
—	50	30	20

