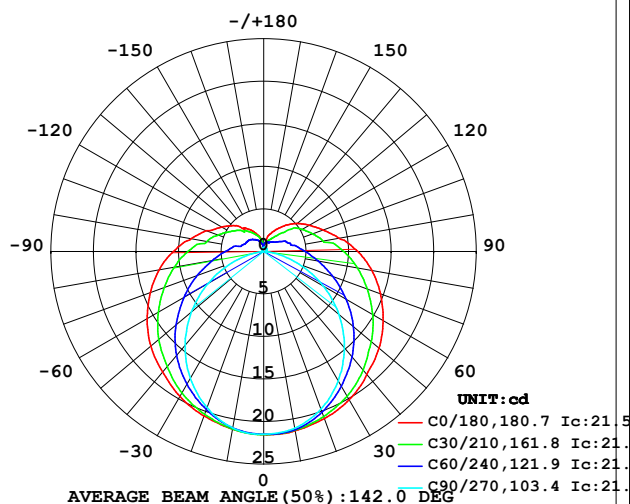


LUMINAIRE PHOTOMETRIC TEST REPORT

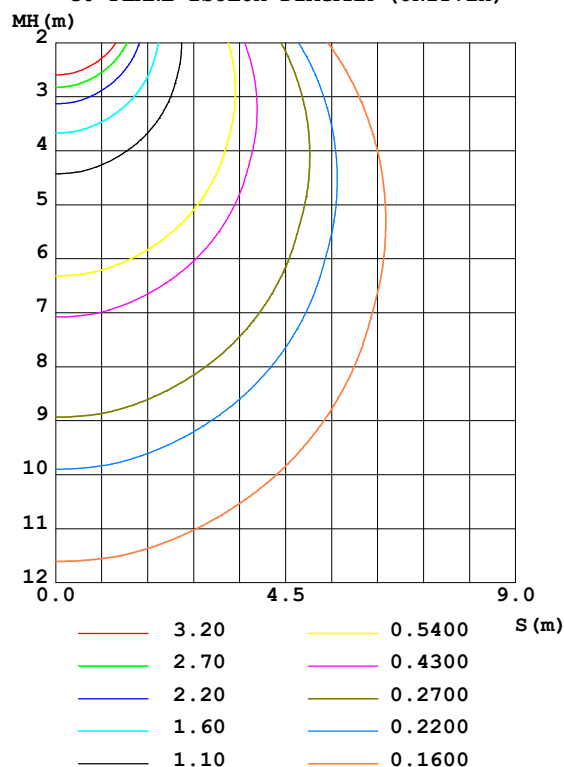
Test:U:12.00V I:0.3960A P:4.752W PF:1.000 Freq:0Hz Lamp Flux:103.411x1 lm		
NAME: SF21-12V-3528-72-2200-80	TYPE: 硅胶	WEIGHT:
SPEC.:	DIM.: 28mm*11.5mm	SERIAL No.:2021120311
MFR.: OLYMPIA	SUR.:1*0.016	Shielding Angle:

DATA OF LAMP		PHOTOMETRIC DATA Eff: 21.76 lm/W			
MODEL	3528	I _{max} (cd)	21.55	S/MH (C0/180)	1.37
NOMINAL POWER (W)	5	LOR (%)	100.0	S/MH (C90/270)	1.20
RATED VOLTAGE (V)	12	TOTAL FLUX (lm)	103.41	η UP, DN (C0-180)	10.8, 39.5
NOMINAL FLUX (lm)	103.411	CIE CLASS	SEMI-D.	η UP, DN (C180-360)	10.6, 39.1
LAMPS INSIDE	1	η up (%)	21.4	CIBSE SHR NOM	1.50
TEST VOLTAGE (V)	12	η down (%)	78.6	CIBSE SHR MAX	1.55

LUMINOUS INTENSITY DISTRIBUTION DIAGRAM



C0 PLANE ISOLUX DIAGRAM (UNIT: lx)



C Range: 0 - 360DEG
 C Interval: 30.0DEG
 Test Speed: HIGH
 Temperature: 25.3DEG
 Operators: LPC
 Test Date: 2021-12-03

γ Range: 0 - 180DEG
 γ Interval: 1.0DEG
 Test System: EVERFINE GO-2000B_V1 SYSTEM V2.0.362
 Humidity: 65.0%
 Test Distance: 9.200m [K=1.0000]
 Remarks:

ZONAL FLUX DIAGRAM

ZONAL FLUX DIAGRAM:

γ	C0	C45	C90	C135	C180	C225	C270	C315	γ	Φ zone	Φ total	%lum, lamp
10	21.41	21.30	21.10	21.11	21.21	21.13	21.07	21.30	0- 10	2.040	2.040	1.97,1.97
20	20.89	20.37	19.70	20.09	20.56	20.06	19.52	20.25	10- 20	5.863	7.902	7.64,7.64
30	20.13	18.95	17.56	18.66	19.69	18.63	17.24	18.82	20- 30	9.001	16.90	16.3,16.3
40	18.88	17.18	14.75	16.81	18.49	16.80	14.38	17.13	30- 40	11.17	28.08	27.2,27.2
50	17.70	15.15	11.54	14.78	17.32	14.78	11.11	15.13	40- 50	12.24	40.32	39,39
60	16.21	12.98	8.053	12.58	15.81	12.58	7.547	12.99	50- 60	12.23	52.54	50.8,50.8
70	14.61	10.83	4.470	10.39	14.19	10.39	4.003	10.84	60- 70	11.23	63.77	61.7,61.7
80	12.91	8.841	1.325	8.418	12.47	8.405	0.9969	8.868	70- 80	9.610	73.38	71,71
90	11.06	7.154	0.2674	6.742	10.63	6.717	0.1793	7.184	80- 90	7.869	81.25	78.6,78.6
100	9.023	5.498	0.3217	5.217	8.668	5.178	0.1961	5.506	90-100	6.342	87.59	84.7,84.7
110	7.445	4.581	0.3372	4.043	7.178	4.096	0.2096	4.607	100-110	4.840	92.43	89.4,89.4
120	6.198	3.785	0.3619	3.468	5.743	3.476	0.2262	3.765	110-120	3.769	96.20	93,93
130	5.148	2.902	0.3900	3.068	4.743	3.028	0.2939	2.993	120-130	2.856	99.06	95.8,95.8
140	4.027	1.977	0.4113	2.535	3.653	2.503	0.3116	2.164	130-140	1.970	101.0	97.7,97.7
150	2.996	1.455	0.4584	2.050	2.888	2.043	0.3669	1.624	140-150	1.252	102.3	98.9,98.9
160	2.192	1.213	0.4709	1.538	2.045	1.585	0.4020	1.274	150-160	0.7228	103.0	99.6,99.6
170	0.9702	1.028	0.4759	1.008	0.8388	1.035	0.4433	1.096	160-170	0.3325	103.3	99.9,99.9
180	0.4975	0.4724	0.4774	0.4800	0.4975	0.4925	0.4573	0.4850	170-180	0.0749	103.4	100,100
DEG	LUMINOUS INTENSITY:cd									UNIT:lm		

Conical surface Flux(90deg): 34.131 lm

%lum = 33.0%

%lamp = 33.0%

Conical surface Flux(120deg): 52.543 lm

%lum = 50.8%

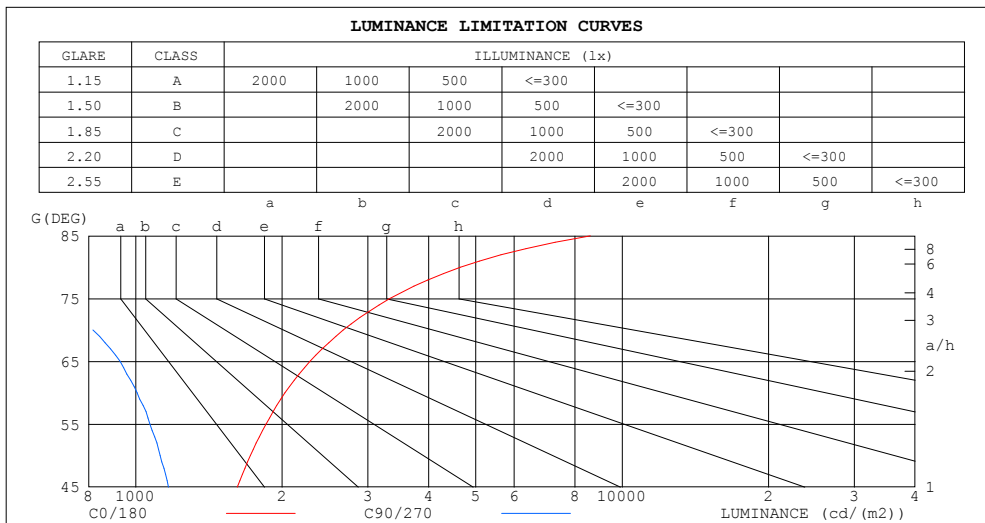
%lamp = 50.8%

C Range: 0 - 360DEG
 C Interval: 30.0DEG
 Test Speed: HIGH
 Temperature:25.3DEG
 Operators:LPC
 Test Date:2021-12-03

γ Range: 0 - 180DEG
 γ Interval: 1.0DEG
 Test System:EVERFINE GO-2000B_V1 SYSTEM V2.0.362
 Humidity:65.0%
 Test Distance:9.200m [K=1.0000]
 Remarks:

LUMINANCE LIMITATION CURVES

Test:U:12.00V I:0.3960A P:4.752W PF:1.000 Freq:0Hz Lamp Flux:103.411x1 lm		
NAME: SF21-12V-3528-72-2200-80	TYPE: 硅胶	WEIGHT:
SPEC.:	DIM.: 28mm*11.5mm	SERIAL No.:2021120311
MFR.: OLYMPIA	SUR.:1*0.016	Shielding Angle:



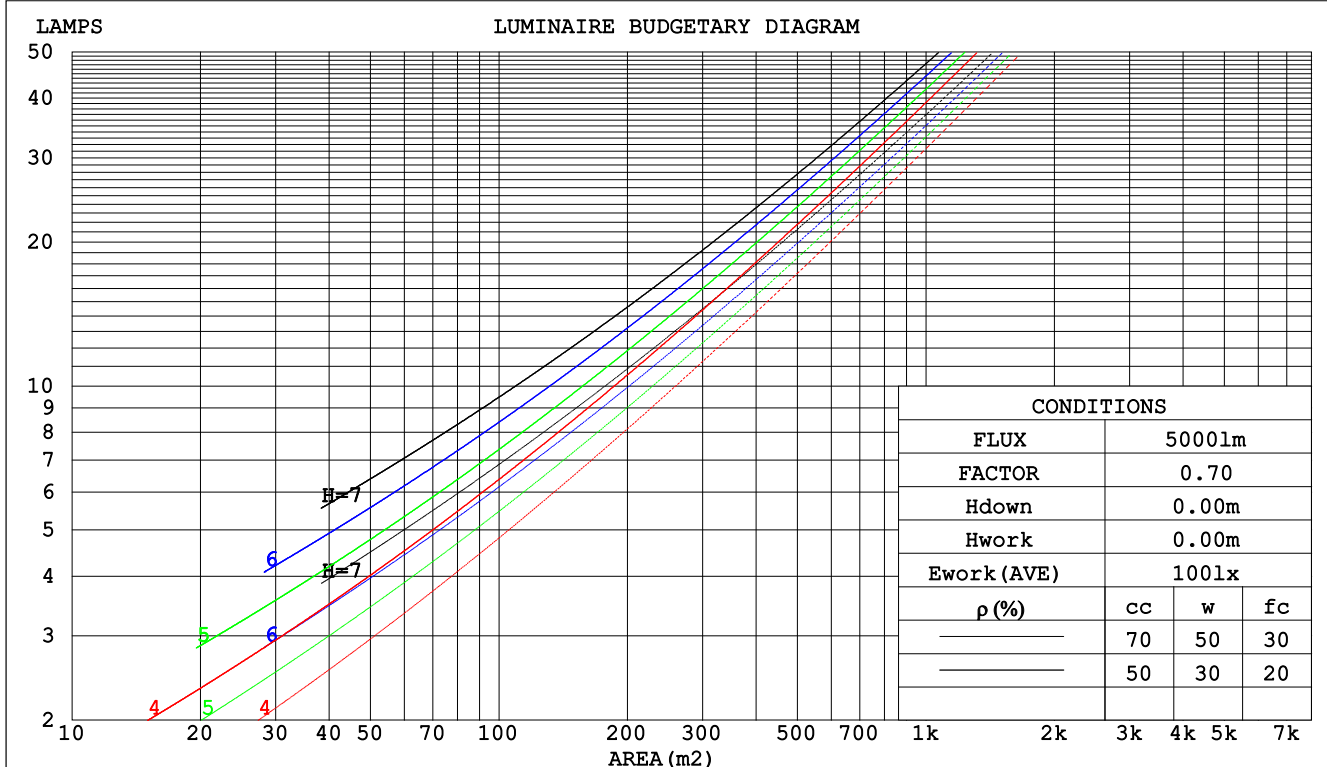
C Range: 0 - 360DEG
C Interval: 30.0DEG
Test Speed: HIGH
Temperature:25.3DEG
Operators:LPC
Test Date:2021-12-03

γ Range: 0 - 180DEG
 γ Interval: 1.0DEG
Test System:EVERFINE GO-2000B_V1 SYSTEM V2.0.362
Humidity:65.0%
Test Distance:9.200m [K=1.0000]
Remarks:

CU AND LUMINAIRE BUDGETARY ESTIMATE DIAGRAM

Test:U:12.00V I:0.3960A P:4.752W PF:1.000 Freq:0Hz Lamp Flux:103.41lx1 lm		
NAME: SF21-12V-3528-72-2200-80	TYPE: 硅胶	WEIGHT:
SPEC.:	DIM.: 28mm*11.5mm	SERIAL No.:2021120311
MFR.: OLYMPIA	SUR.:1*0.016	Shielding Angle:

pcc	80%			70%			50%			30%			10%			0
pw	50%	30%	10%	50%	30%	10%	50%	30%	10%	50%	30%	10%	50%	30%	10%	0
pfc	20%			20%			20%			20%			20%			0
RCR	RCR:Room Cavity Ratio						Coefficients of Utilization(CU)									
0.0	1.14	1.14	1.14	1.09	1.09	1.09	.99	.99	.99	.90	.90	.90	.82	.82	.82	.79
1.0	.95	.89	.85	.90	.86	.81	.82	.78	.75	.74	.71	.69	.67	.65	.63	.59
2.0	.81	.73	.67	.77	.70	.64	.70	.64	.59	.64	.59	.55	.58	.54	.51	.47
3.0	.70	.61	.54	.67	.59	.52	.61	.54	.49	.55	.50	.45	.50	.46	.42	.38
4.0	.62	.52	.45	.59	.50	.44	.54	.46	.41	.49	.43	.38	.44	.39	.35	.32
5.0	.55	.45	.38	.52	.44	.37	.48	.40	.35	.43	.37	.32	.39	.34	.30	.27
6.0	.49	.40	.33	.47	.38	.32	.43	.36	.30	.39	.33	.28	.36	.30	.26	.24
7.0	.44	.35	.29	.42	.34	.28	.39	.32	.26	.36	.29	.25	.32	.27	.23	.21
8.0	.40	.31	.25	.39	.30	.25	.35	.28	.23	.33	.26	.22	.30	.24	.21	.18
9.0	.37	.28	.23	.35	.27	.22	.32	.26	.21	.30	.24	.20	.27	.22	.18	.16
10.0	.34	.26	.20	.32	.25	.20	.30	.23	.19	.28	.22	.18	.25	.20	.17	.15



C Range: 0 - 360DEG
 C Interval: 30.0DEG
 Test Speed: HIGH
 Temperature:25.3DEG
 Operators:LPC
 Test Date:2021-12-03

γ Range: 0 - 180DEG
 γ Interval: 1.0DEG
 Test System:EVERFINE GO-2000B_V1 SYSTEM V2.0.362
 Humidity:65.0%
 Test Distance:9.200m [K=1.0000]
 Remarks:

WEC AND CCEC

Test:U:12.00V I:0.3960A P:4.752W PF:1.000 Freq:0Hz Lamp Flux:103.411x1 lm		
NAME: SF21-12V-3528-72-2200-80	TYPE: 硅胶	WEIGHT:
SPEC.:	DIM.: 28mm*11.5mm	SERIAL No.:2021120311
MFR.: OLYMPIA	SUR.:1*0.016	Shielding Angle:

pcc	80%			70%			50%			30%			10%			0	
pw	50%	30%	10%	50%	30%	10%	50%	30%	10%	50%	30%	10%	50%	30%	10%	0	
pfc	20%			20%			20%			20%			20%			0	
RCR	RCR:Room Cavity Ratio						Wall Exitance Coefficients(WEC)										
0.0																	
1.0	.385	.219	.069	.372	.212	.067	.346	.198	.063	.322	.186	.060	.300	.174	.056		
2.0	.332	.182	.056	.320	.176	.054	.297	.165	.051	.275	.154	.048	.255	.144	.046		
3.0	.295	.157	.047	.284	.152	.046	.262	.142	.043	.243	.133	.041	.225	.124	.039		
4.0	.265	.138	.041	.255	.133	.039	.236	.125	.037	.218	.117	.035	.201	.109	.033		
5.0	.241	.123	.036	.232	.119	.035	.214	.112	.033	.198	.104	.031	.183	.098	.029		
6.0	.221	.111	.032	.212	.107	.031	.196	.101	.029	.181	.094	.028	.167	.088	.026		
7.0	.204	.101	.029	.196	.098	.028	.181	.092	.026	.167	.086	.025	.155	.080	.024		
8.0	.189	.092	.026	.182	.089	.025	.168	.084	.024	.156	.079	.023	.144	.074	.021		
9.0	.176	.085	.024	.169	.083	.023	.157	.078	.022	.145	.073	.021	.134	.068	.020		
10.0	.165	.079	.022	.159	.077	.021	.147	.072	.020	.136	.068	.019	.126	.063	.018		

pcc	80%			70%			50%			30%			10%			0	
pw	50%	30%	10%	50%	30%	10%	50%	30%	10%	50%	30%	10%	50%	30%	10%	0	
pfc	20%			20%			20%			20%			20%			0	
RCR	RCR:Room Cavity Ratio						Ceiling Cavity Exitance Coefficients(CCEC)										
0.0	.354	.354	.354	.302	.302	.302	.206	.206	.206	.119	.119	.119	.038	.038	.038		
1.0	.350	.320	.293	.300	.275	.252	.205	.189	.174	.118	.109	.101	.038	.035	.033		
2.0	.343	.297	.259	.294	.256	.224	.202	.177	.156	.116	.103	.091	.037	.033	.030		
3.0	.336	.281	.237	.288	.242	.206	.198	.168	.144	.114	.098	.085	.037	.032	.028		
4.0	.328	.269	.223	.282	.232	.194	.194	.162	.137	.112	.095	.081	.036	.031	.027		
5.0	.320	.259	.214	.275	.224	.186	.190	.157	.131	.110	.092	.078	.035	.030	.026		
6.0	.313	.251	.207	.269	.217	.180	.186	.152	.127	.108	.090	.076	.035	.029	.025		
7.0	.306	.245	.201	.263	.212	.176	.182	.149	.124	.106	.088	.074	.034	.029	.024		
8.0	.299	.239	.197	.258	.207	.172	.178	.146	.122	.104	.086	.073	.034	.028	.024		
9.0	.293	.234	.194	.253	.203	.170	.175	.143	.120	.102	.084	.072	.033	.028	.024		
10.0	.287	.230	.192	.248	.200	.168	.172	.141	.119	.100	.083	.071	.033	.027	.024		

C Range: 0 - 360DEG
 C Interval: 30.0DEG
 Test Speed: HIGH
 Temperature:25.3DEG
 Operators:LPC
 Test Date:2021-12-03

γ Range: 0 - 180DEG
 γ Interval: 1.0DEG
 Test System:EVERFINE GO-2000B_V1 SYSTEM V2.0.362
 Humidity:65.0%
 Test Distance:9.200m [K=1.0000]
 Remarks:

UGR(Unified Glare Rating) Table

Test:U:12.00V I:0.3960A P:4.752W PF:1.000 Freq:0Hz Lamp Flux:103.411x1 lm										
NAME: SF21-12V-3528-72-2200-80					TYPE: 硅胶			WEIGHT:		
SPEC.:					DIM.: 28mm*11.5mm			SERIAL No.:2021120311		
MFR.: OLYMPIA					SUR.:1*0.016			Shielding Angle:		
ceiling/cavity	0.7	0.7	0.5	0.5	0.3	0.7	0.7	0.5	0.5	0.3
walls	0.5	0.3	0.5	0.3	0.3	0.5	0.3	0.5	0.3	0.3
working plane	0.2	0.2	0.2	0.2	0.2	0.2	0.2	0.2	0.2	0.2
Room dimensions	Viewed crosswise					Viewed endwise				
x = 2H y = 2H	22.1	23.4	22.6	24.0	24.6	19.5	20.8	20.0	21.4	22.0
3H	24.8	26.1	25.4	26.7	27.3	20.9	22.1	21.5	22.7	23.4
4H	26.4	27.6	27.0	28.2	28.9	21.4	22.6	22.0	23.2	23.9
6H	28.1	29.2	28.8	29.9	30.6	21.7	22.8	22.3	23.4	24.1
8H	29.1	30.2	29.7	30.8	31.5	21.8	22.8	22.4	23.5	24.2
12H	30.2	31.2	30.8	31.9	32.6	21.8	22.8	22.4	23.4	24.2
4H 2H	22.6	23.8	23.2	24.4	25.1	20.8	21.9	21.4	22.5	23.2
3H	25.7	26.7	26.3	27.3	28.1	22.5	23.5	23.1	24.2	24.9
4H	27.4	28.3	28.1	29.0	29.8	23.3	24.2	23.9	24.9	25.6
6H	29.3	30.2	30.0	30.9	31.7	23.8	24.7	24.5	25.4	26.2
8H	30.4	31.2	31.1	31.9	32.7	24.0	24.8	24.7	25.5	26.3
12H	31.7	32.4	32.4	33.1	34.0	24.1	24.8	24.8	25.6	26.4
8H 4H	27.7	28.5	28.4	29.2	30.0	24.5	25.3	25.2	26.0	26.8
6H	30.0	30.7	30.7	31.4	32.3	25.6	26.2	26.3	27.0	27.8
8H	31.3	31.9	32.1	32.6	33.5	26.0	26.6	26.8	27.4	28.2
12H	32.8	33.3	33.6	34.1	35.0	26.4	26.9	27.1	27.6	28.5
12H 4H	27.7	28.5	28.5	29.2	30.0	25.0	25.7	25.7	26.4	27.2
6H	30.1	30.7	30.9	31.5	32.3	26.3	26.9	27.0	27.6	28.5
8H	31.5	32.1	32.3	32.8	33.7	26.9	27.4	27.7	28.2	29.1
Variations with the observer position at spacings:										
S = 1.0H	+ 0.1 / - 0.1					+ 0.1 / - 0.1				
1.5H	+ 0.2 / - 0.3					+ 0.2 / - 0.3				
2.0H	+ 0.2 / - 0.3					+ 0.3 / - 0.4				

CIE Pub.117, 103.4 lm Total Lamp Luminous Flux Correct (8log(F/F0) = -7.9)

C Range: 0 - 360DEG
C Interval: 30.0DEG
Test Speed: HIGH
Temperature:25.3DEG
Operators:LPC
Test Date:2021-12-03

γ Range: 0 - 180DEG
γ Interval: 1.0DEG
Test System:EVERFINE GO-2000B_V1 SYSTEM V2.0.362
Humidity:65.0%
Test Distance:9.200m [K=1.0000]
Remarks:

UTILIZATION FACTORS TABLE

Test:U:12.00V I:0.3960A P:4.752W PF:1.000 Freq:0Hz Lamp Flux:103.411x1 lm		
NAME: SF21-12V-3528-72-2200-80	TYPE: 硅胶	WEIGHT:
SPEC.:	DIM.: 28mm*11.5mm	SERIAL No.:2021120311
MFR.: OLYMPIA	SUR.:1*0.016	Shielding Angle:

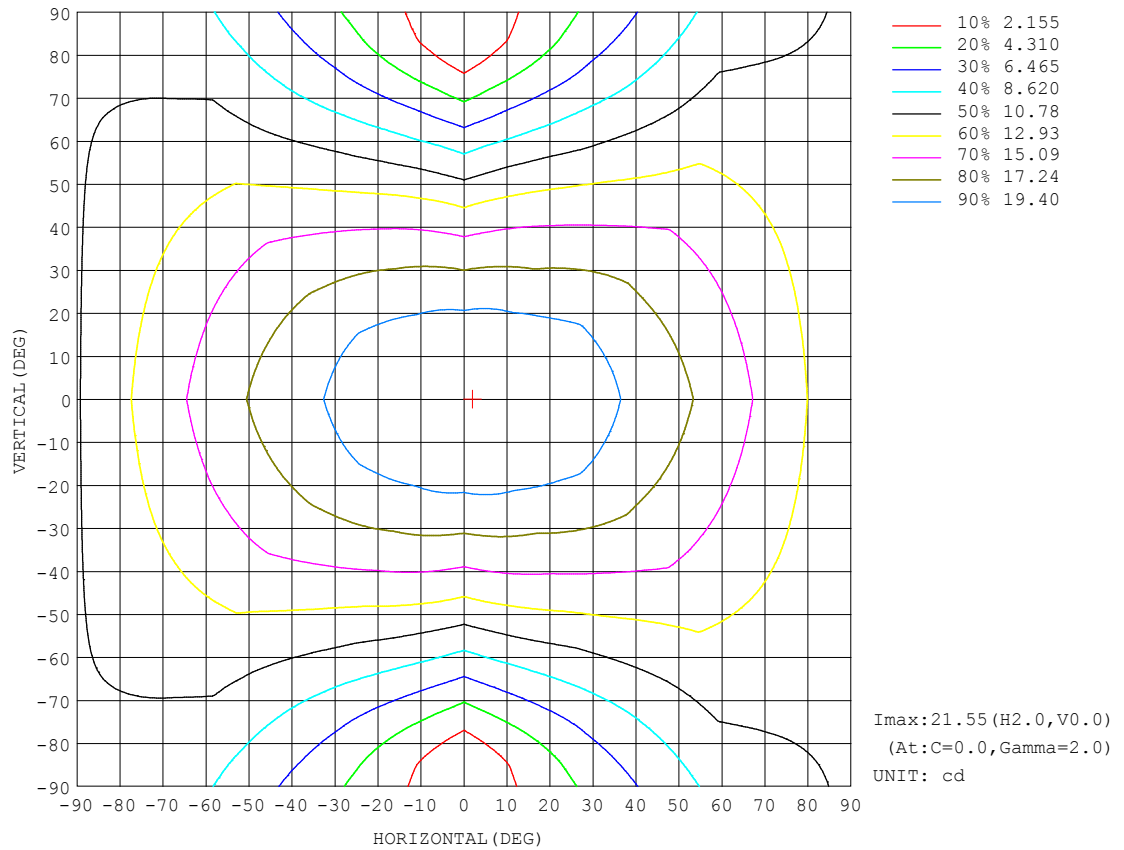
REFLECTANCE										
Ceiling	0.8	0.8	0.8	0.7	0.7	0.7	0.5	0.5	0.5	0
Walls	0.7	0.5	0.3	0.7	0.5	0.3	0.7	0.5	0.3	0
Working plane	0.2	0.2	0.2	0.2	0.2	0.2	0.2	0.2	0.2	0
ROOM INDEX	UTILIZATION FACTORS (PERCENT) $k(RI) \times RCR = 5$									
$k = 0.60$	47	34	27	46	34	27	43	33	26	20
0.80	56	43	35	54	42	34	51	40	33	25
1.00	64	51	42	61	49	41	58	50	40	31
1.25	70	58	49	68	56	48	63	53	46	36
1.50	76	63	55	73	61	53	67	58	51	40
2.00	83	72	63	79	69	62	73	65	58	46
2.50	87	77	69	84	74	67	77	69	63	50
3.00	91	82	74	87	79	72	80	73	67	53
4.00	96	88	81	92	84	78	84	78	73	58
5.00	99	92	86	94	88	83	86	81	77	61
ROOM INDEX	UF (total)									Direct
According to DIN EN 13032-2 2004			Suspended					SHRNOM = 1.25		

C Range: 0 - 360DEG
 C Interval: 30.0DEG
 Test Speed: HIGH
 Temperature:25.3DEG
 Operators:LPC
 Test Date:2021-12-03

γ Range: 0 - 180DEG
 γ Interval: 1.0DEG
 Test System:EVERFINE GO-2000B_V1 SYSTEM V2.0.362
 Humidity:65.0%
 Test Distance:9.200m [K=1.0000]
 Remarks:

ISOCANDELA DIAGRAM

Test:U:12.00V I:0.3960A P:4.752W PF:1.000 Freq:0Hz Lamp Flux:103.411x1 lm		
NAME: SF21-12V-3528-72-2200-80	TYPE: 硅胶	WEIGHT:
SPEC.:	DIM.: 28mm*11.5mm	SERIAL No.:2021120311
MFR.: OLYMPIA	SUR.:1*0.016	Shielding Angle:

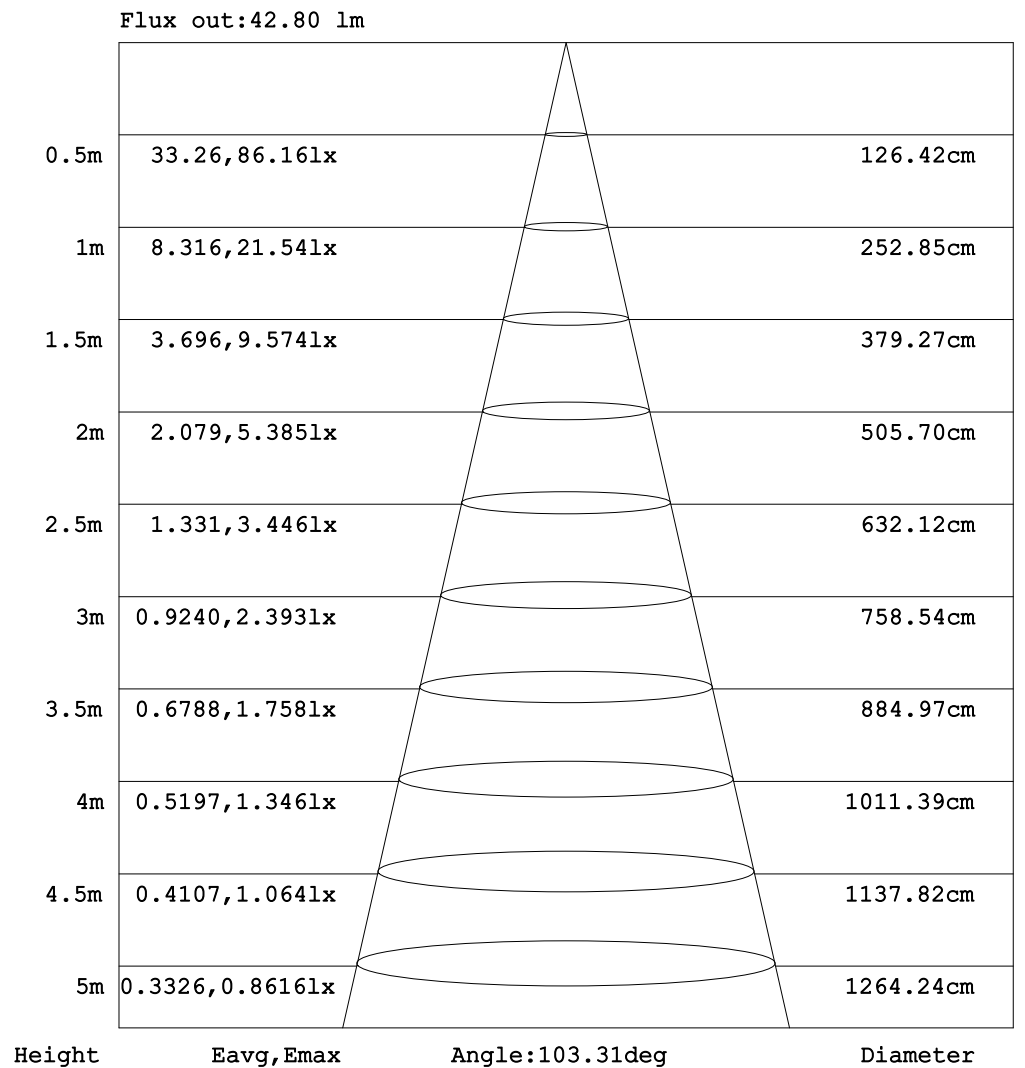


C Range: 0 - 360DEG
C Interval: 30.0DEG
Test Speed: HIGH
Temperature:25.3DEG
Operators:LPC
Test Date:2021-12-03

γ Range: 0 - 180DEG
 γ Interval: 1.0DEG
Test System:EVERFINE GO-2000B_V1 SYSTEM V2.0.362
Humidity:65.0%
Test Distance:9.200m [K=1.0000]
Remarks:

AAI Figure

Test:U:12.00V I:0.3960A P:4.752W PF:1.000 Freq:0Hz Lamp Flux:103.41lx 1m		
NAME: SF21-12V-3528-72-2200-80	TYPE: 硅胶	WEIGHT:
SPEC.:	DIM.: 28mm*11.5mm	SERIAL No.:2021120311
MFR.: OLYMPIA	SUR.:1*0.016	Shielding Angle:



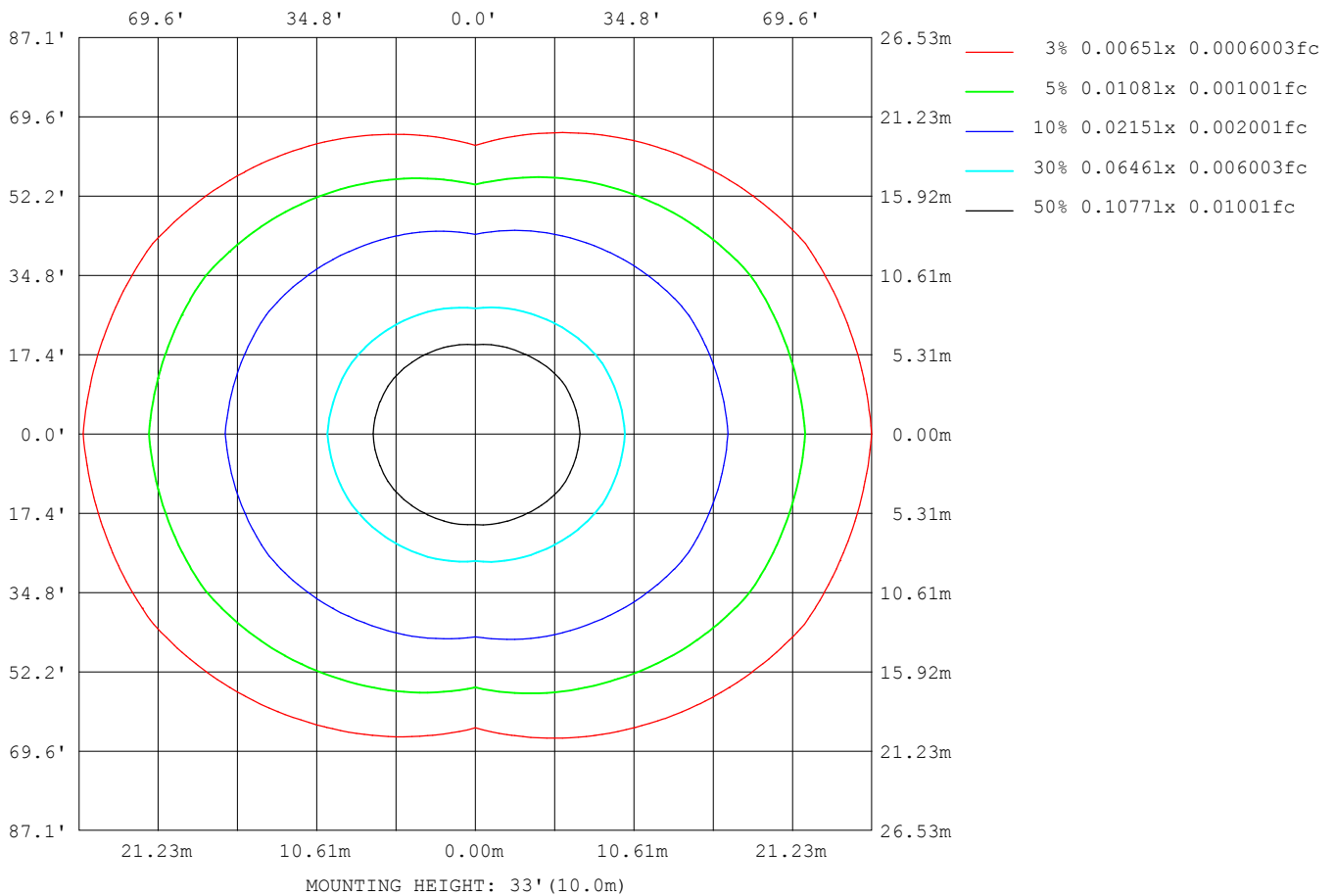
Note: The Curves indicate the illuminated area and the average illumination when the luminaire is at different distance.

C Range: 0 - 360DEG
 C Interval: 30.0DEG
 Test Speed: HIGH
 Temperature:25.3DEG
 Operators:LPC
 Test Date:2021-12-03

γ Range: 0 - 180DEG
 γ Interval: 1.0DEG
 Test System:EVERFINE GO-2000B_V1 SYSTEM V2.0.362
 Humidity:65.0%
 Test Distance:9.200m [K=1.0000]
 Remarks:

ISOLUX DIAGRAM

Test:U:12.00V I:0.3960A P:4.752W PF:1.000 Freq:0Hz Lamp Flux:103.41lx 1m		
NAME: SF21-12V-3528-72-2200-80	TYPE: 硅胶	WEIGHT:
SPEC.:	DIM.: 28mm*11.5mm	SERIAL No.:2021120311
MFR.: OLYMPIA	SUR.:1*0.016	Shielding Angle:



C Range: 0 - 360DEG
C Interval: 30.0DEG
Test Speed: HIGH
Temperature:25.3DEG
Operators:LPC
Test Date:2021-12-03

γ Range: 0 - 180DEG
 γ Interval: 1.0DEG
Test System:EVERFINE GO-2000B_V1 SYSTEM V2.0.362
Humidity:65.0%
Test Distance:9.200m [K=1.0000]
Remarks:

LED Avg.L Report

Test:U:12.00V I:0.3960A P:4.752W PF:1.000 Freq:0Hz Lamp Flux:103.411x1 lm		
NAME: SF21-12V-3528-72-2200-80	TYPE:硅胶	WEIGHT:
SPEC.:	DIM.: 28mm*11.5mm	SERIAL No.:2021120311
MFR.: OLYMPIA	SUR.:1*0.016	Shielding Angle:

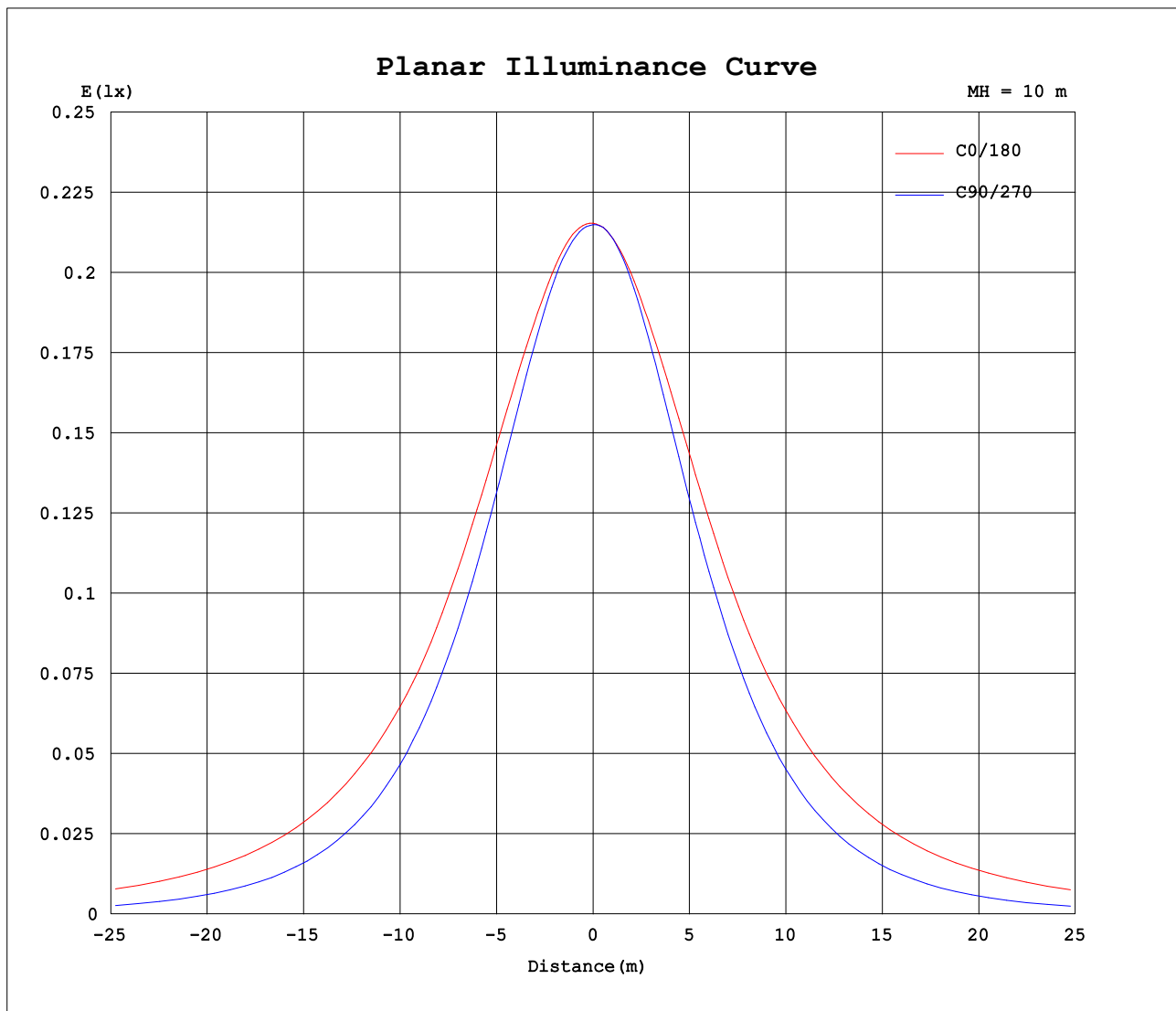
AvgL	cd/m2
L_0~180 (65) av	2250
L_0~180 (75) av	3274
L_0~180 (85) av	8453
L_90~270 (65) av	890
L_90~270 (75) av	622
L_90~270 (85) av	193
L_45 (65) av	1747
L_45 (75) av	2359
L_45 (85) av	5720

Standard: GB/T 29293-2012

C Range: 0 - 360DEG
C Interval: 30.0DEG
Test Speed: HIGH
Temperature:25.3DEG
Operators:LPC
Test Date:2021-12-03

γ Range: 0 - 180DEG
γ Interval: 1.0DEG
Test System:EVERFINE GO-2000B_V1 SYSTEM V2.0.362
Humidity:65.0%
Test Distance:9.200m [K=1.0000]
Remarks:

Planar Illuminance Curve



C Range: 0 - 360DEG
C Interval: 30.0DEG
Test Speed: HIGH
Temperature: 25.3DEG
Operators: LPC
Test Date: 2021-12-03

γ Range: 0 - 180DEG
 γ Interval: 1.0DEG
Test System: EVERFINE GO-2000B_V1 SYSTEM V2.0.362
Humidity: 65.0%
Test Distance: 9.200m [K=1.0000]
Remarks:

LUMINOUS DISTRIBUTION INTENSITY DATA

Test:U:12.00V I:0.3960A P:4.752W PF:1.000 Freq:0Hz Lamp Flux:103.411x1 lm		
NAME: SF21-12V-3528-72-2200-80	TYPE: 硅胶	WEIGHT:
SPEC.:	DIM.: 28mm*11.5mm	SERIAL No.:2021120311
MFR.: OLYMPIA	SUR.:1*0.016	Shielding Angle:

Table--1

UNIT: cd

C (DEG) γ (DEG)	0	30	60	90	120	150	180	210	240	270	300	330						
0	21.5	21.5	21.5	21.5	21.5	21.5	21.5	21.5	21.5	21.5	21.5	21.5						
5	21.6	21.5	21.5	21.4	21.4	21.4	21.4	21.5	21.4	21.4	21.4	21.5						
10	21.4	21.3	21.3	21.1	21.1	21.1	21.2	21.2	21.1	21.1	21.2	21.4						
15	21.2	21.0	20.8	20.5	20.6	20.7	20.9	20.8	20.5	20.4	20.6	21.1						
20	20.9	20.6	20.1	19.7	19.9	20.3	20.6	20.4	19.8	19.5	19.9	20.6						
25	20.6	20.2	19.2	18.7	19.1	19.8	20.2	19.8	19.0	18.5	19.0	20.1						
30	20.1	19.6	18.3	17.6	18.1	19.2	19.7	19.2	18.0	17.2	18.0	19.6						
35	19.6	19.0	17.2	16.2	17.1	18.4	19.1	18.5	17.0	15.9	17.0	19.0						
40	18.9	18.2	16.2	14.8	16.0	17.6	18.5	17.6	15.9	14.4	16.0	18.2						
45	18.3	17.3	15.0	13.2	14.8	16.8	18.0	16.9	14.7	12.8	14.9	17.3						
50	17.7	16.5	13.8	11.5	13.5	16.0	17.3	16.1	13.5	11.1	13.7	16.5						
55	17.0	15.7	12.5	9.82	12.2	15.2	16.6	15.2	12.1	9.36	12.5	15.7						
60	16.2	14.8	11.2	8.05	10.9	14.3	15.8	14.3	10.8	7.55	11.1	14.8						
65	15.4	13.9	9.90	6.28	9.63	13.3	15.0	13.4	9.58	5.76	9.87	13.9						
70	14.6	13.0	8.69	4.47	8.39	12.4	14.2	12.5	8.32	4.00	8.66	13.0						
75	13.8	12.1	7.51	2.80	7.21	11.5	13.3	11.6	7.14	2.35	7.47	12.1						
80	12.9	11.2	6.49	1.32	6.21	10.6	12.5	10.7	6.13	1.00	6.45	11.3						
85	12.0	10.3	5.62	0.31	5.35	9.75	11.6	9.81	5.25	0.23	5.57	10.4						
90	11.1	9.41	4.90	0.27	4.63	8.86	10.6	8.91	4.52	0.18	4.84	9.53						
95	10.1	8.57	4.30	0.28	4.08	8.04	9.72	8.09	3.97	0.19	4.23	8.67						
100	9.02	7.12	3.88	0.32	3.70	6.73	8.67	6.79	3.57	0.20	3.79	7.22						
105	8.20	6.65	3.29	0.33	2.66	6.30	7.90	6.34	2.72	0.20	3.20	6.74						
110	7.44	6.13	3.04	0.34	2.59	5.50	7.18	5.70	2.49	0.21	3.01	6.20						
115	6.77	5.63	2.84	0.35	2.47	4.95	6.30	5.16	2.34	0.21	2.73	5.63						
120	6.20	5.22	2.35	0.36	2.32	4.62	5.74	4.68	2.27	0.23	2.48	5.05						
125	5.66	4.81	2.01	0.38	2.27	4.29	5.24	4.25	2.22	0.26	2.22	4.51						
130	5.15	4.08	1.72	0.39	2.21	3.93	4.74	3.92	2.14	0.29	1.96	4.03						
135	4.59	3.15	1.59	0.41	2.14	3.24	4.22	3.20	2.00	0.31	1.69	3.46						
140	4.03	2.49	1.47	0.41	1.89	3.19	3.65	3.16	1.85	0.31	1.51	2.82						
145	3.48	2.05	1.35	0.43	1.73	2.83	3.25	2.84	1.70	0.35	1.34	2.36						
150	3.00	1.71	1.20	0.46	1.59	2.51	2.89	2.52	1.56	0.37	1.23	2.02						
155	2.58	1.48	1.20	0.47	1.44	2.14	2.44	2.17	1.40	0.39	1.21	1.66						
160	2.19	1.24	1.19	0.47	1.25	1.82	2.04	1.94	1.24	0.40	1.19	1.36						
165	1.82	1.11	1.13	0.47	1.04	1.50	1.74	1.59	1.02	0.42	1.12	1.21						
170	0.97	1.01	1.05	0.48	0.85	1.16	0.84	1.24	0.83	0.44	1.03	1.16						
175	0.76	0.87	0.92	0.48	0.52	0.78	0.61	0.84	0.55	0.45	0.91	1.03						
180	0.50	0.46	0.48	0.48	0.48	0.48	0.50	0.50	0.48	0.46	0.47	0.50						

C Range: 0 - 360DEG
C Interval: 30.0DEG
Test Speed: HIGH
Temperature:25.3DEG
Operators:LPC
Test Date:2021-12-03

γ Range: 0 - 180DEG
γ Interval: 1.0DEG
Test System:EVERFINE GO-2000B_V1 SYSTEM V2.0.362
Humidity:65.0%
Test Distance:9.200m [K=1.0000]
Remarks:

Photometric Data Table [cd]

G/C	0.0	30.0	60.0	90.0	120.0	150.0	180.0	210.0	240.0	270.0
0.0	21.54	21.54	21.50	21.49	21.51	21.52	21.54	21.54	21.50	21.49
3.0	21.55	21.53	21.50	21.45	21.49	21.44	21.49	21.53	21.44	21.50
6.0	21.55	21.48	21.47	21.34	21.35	21.34	21.39	21.41	21.33	21.39
9.0	21.45	21.37	21.32	21.18	21.17	21.18	21.26	21.26	21.14	21.17
12.0	21.31	21.23	21.11	20.88	20.91	20.98	21.09	21.05	20.86	20.83
15.0	21.16	21.04	20.78	20.51	20.56	20.74	20.90	20.81	20.49	20.41
18.0	20.99	20.81	20.39	20.06	20.16	20.48	20.70	20.55	20.08	19.92
21.0	20.83	20.56	19.93	19.51	19.71	20.20	20.50	20.26	19.61	19.32
24.0	20.64	20.28	19.42	18.94	19.23	19.90	20.27	19.94	19.13	18.70
27.0	20.40	19.97	18.87	18.25	18.70	19.56	20.00	19.61	18.60	17.97
30.0	20.13	19.62	18.27	17.56	18.14	19.19	19.69	19.22	18.04	17.24
33.0	19.81	19.25	17.65	16.77	17.54	18.74	19.35	18.79	17.44	16.45
36.0	19.46	18.82	17.03	15.92	16.92	18.27	18.97	18.32	16.83	15.59
39.0	19.03	18.35	16.39	15.07	16.26	17.77	18.60	17.81	16.17	14.68
42.0	18.61	17.85	15.71	14.18	15.55	17.28	18.28	17.32	15.48	13.77
45.0	18.30	17.29	15.01	13.20	14.81	16.84	17.96	16.89	14.74	12.78
48.0	17.96	16.80	14.29	12.23	14.05	16.37	17.59	16.43	13.98	11.77
51.0	17.57	16.36	13.53	11.22	13.26	15.87	17.18	15.94	13.19	10.76
54.0	17.14	15.86	12.76	10.16	12.44	15.34	16.76	15.42	12.39	9.708
57.0	16.69	15.35	11.96	9.149	11.67	14.81	16.30	14.87	11.61	8.622
60.0	16.21	14.81	11.16	8.053	10.90	14.25	15.81	14.31	10.84	7.547
63.0	15.74	14.23	10.39	6.962	10.15	13.68	15.33	13.75	10.08	6.506
66.0	15.26	13.68	9.662	5.917	9.386	13.13	14.84	13.18	9.325	5.396
69.0	14.78	13.14	8.928	4.832	8.627	12.58	14.35	12.63	8.576	4.360
72.0	14.29	12.60	8.215	3.791	7.908	12.03	13.85	12.09	7.842	3.355
75.0	13.78	12.08	7.506	2.797	7.215	11.52	13.34	11.56	7.144	2.355
78.0	13.26	11.54	6.867	1.862	6.596	10.97	12.82	11.03	6.526	1.495
81.0	12.73	11.01	6.304	1.079	6.023	10.45	12.30	10.51	5.938	0.7906
84.0	12.18	10.49	5.782	0.4609	5.510	9.934	11.77	9.988	5.411	0.2573
87.0	11.63	9.950	5.314	0.2704	5.048	9.372	11.19	9.425	4.949	0.1811
90.0	11.06	9.412	4.897	0.2674	4.625	8.859	10.63	8.912	4.522	0.1793
93.0	10.49	8.899	4.519	0.2814	4.273	8.371	10.09	8.409	4.155	0.1842
96.0	9.933	8.396	4.198	0.2865	3.992	7.888	9.542	7.932	3.864	0.1892
99.0	9.196	7.166	3.946	0.3067	3.770	6.764	8.829	6.861	3.643	0.1942
102.0	8.691	6.945	3.530	0.3248	3.034	6.583	8.356	6.640	3.033	0.2001
105.0	8.204	6.648	3.292	0.3295	2.664	6.296	7.899	6.343	2.719	0.2050
108.0	7.737	6.326	3.242	0.3341	2.619	5.888	7.466	5.942	2.593	0.2077
111.0	7.304	6.015	2.946	0.3387	2.574	5.372	6.838	5.605	2.447	0.2105
114.0	6.897	5.734	2.930	0.3518	2.478	5.045	6.417	5.278	2.362	0.2133
117.0	6.535	5.467	2.720	0.3618	2.423	4.814	6.065	4.966	2.322	0.2161
120.0	6.198	5.216	2.353	0.3619	2.318	4.618	5.743	4.680	2.271	0.2262
123.0	5.871	4.980	2.152	0.3719	2.372	4.422	5.437	4.418	2.276	0.2412
126.0	5.555	4.723	1.946	0.3810	2.227	4.216	5.140	4.172	2.221	0.2763
129.0	5.248	4.240	1.775	0.3870	2.212	4.005	4.839	3.981	2.161	0.2914
132.0	4.927	3.667	1.654	0.3961	2.196	3.768	4.547	3.755	2.085	0.2990
135.0	4.595	3.145	1.588	0.4071	2.136	3.238	4.225	3.204	2.005	0.3053
138.0	4.248	2.733	1.518	0.4096	1.991	3.341	3.641	3.312	1.934	0.3091
141.0	3.911	2.392	1.448	0.4122	1.850	3.115	3.608	3.077	1.819	0.3415
144.0	3.590	2.120	1.377	0.4272	1.759	2.869	3.326	2.905	1.724	0.3446
147.0	3.283	1.899	1.307	0.4524	1.689	2.703	3.110	2.694	1.673	0.3567
150.0	2.996	1.708	1.201	0.4584	1.588	2.512	2.888	2.523	1.563	0.3669
153.0	2.735	1.572	1.198	0.4644	1.513	2.296	2.617	2.302	1.477	0.3769
156.0	2.479	1.427	1.195	0.4689	1.408	2.070	2.376	2.111	1.367	0.3920
159.0	2.247	1.291	1.191	0.4704	1.292	1.864	2.095	1.970	1.256	0.3970
162.0	2.046	1.165	1.181	0.4719	1.176	1.683	1.964	1.790	1.160	0.4120
165.0	1.815	1.111	1.131	0.4734	1.041	1.502	1.738	1.589	1.025	0.4222
168.0	1.021	1.040	1.086	0.4749	0.9101	1.311	0.9293	1.398	0.8892	0.4372
171.0	0.9352	0.9947	1.026	0.4764	0.8096	1.090	0.7937	1.162	0.7736	0.4463
174.0	0.8046	0.9143	0.9503	0.4769	0.5890	0.8487	0.6727	0.9155	0.6273	0.4493
177.0	0.6990	0.7772	0.5701	0.4774	0.4976	0.5373	0.6125	0.7093	0.4825	0.4523
180.0	0.4975	0.4624	0.4825	0.4774	0.4825	0.4774	0.4975	0.5026	0.4825	0.4573
G/C	300.0	330.0								
0.0	21.51	21.52								
3.0	21.50	21.54								
6.0	21.41	21.54								
9.0	21.26	21.45								
12.0	21.00	21.29								
15.0	20.65	21.07								
18.0	20.23	20.78								
21.0	19.74	20.50								
24.0	19.20	20.22								
27.0	18.60	19.95								
30.0	18.02	19.63								

C Range: 0 - 360DEG
 C Interval: 30.0DEG
 Test Speed: HIGH
 Temperature: 25.3DEG
 Operators: LPC
 Test Date: 2021-12-03

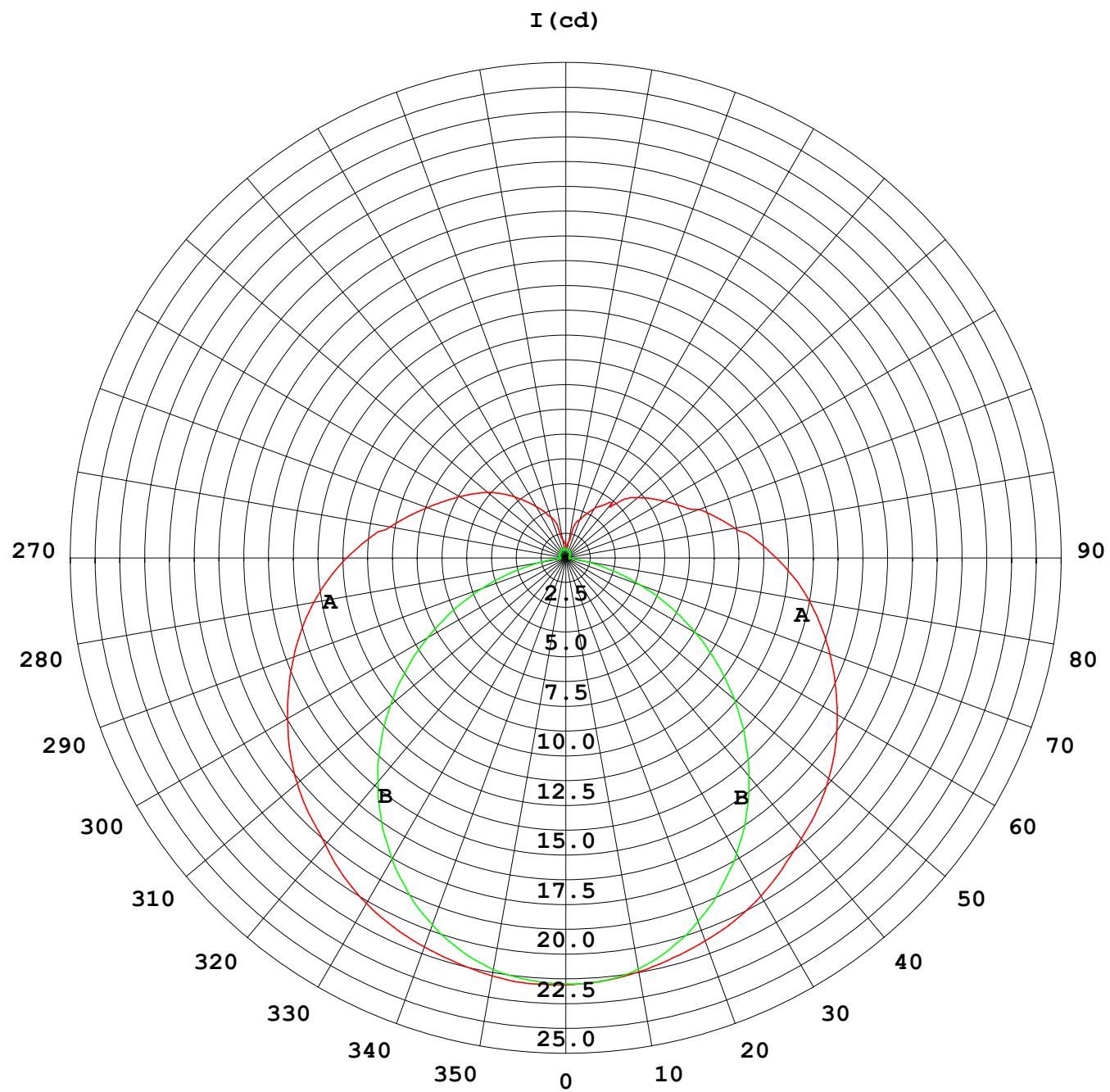
γ Range: 0 - 180DEG
 γ Interval: 1.0DEG
 Test System: EVERFINE GO-2000B_V1 SYSTEM V2.0.362
 Humidity: 65.0%
 Test Distance: 9.200m [K=1.0000]
 Remarks:

Photometric Data Table [cd]

33.0	17.44	19.25
36.0	16.85	18.84
39.0	16.25	18.38
42.0	15.63	17.88
45.0	14.95	17.34
48.0	14.25	16.82
51.0	13.50	16.38
54.0	12.73	15.90
57.0	11.95	15.39
60.0	11.14	14.85
63.0	10.34	14.30
66.0	9.627	13.74
69.0	8.898	13.21
72.0	8.174	12.68
75.0	7.466	12.14
78.0	6.833	11.63
81.0	6.260	11.11
84.0	5.732	10.58
87.0	5.255	10.05
90.0	4.843	9.525
93.0	4.462	9.007
96.0	4.130	8.500
99.0	3.879	7.292
102.0	3.531	7.052
105.0	3.201	6.735
108.0	3.161	6.419
111.0	3.010	6.097
114.0	2.774	5.750
117.0	2.658	5.394
120.0	2.477	5.052
123.0	2.331	4.710
126.0	2.161	4.423
129.0	2.025	4.117
132.0	1.834	3.835
135.0	1.688	3.464
138.0	1.563	3.031
141.0	1.452	2.725
144.0	1.372	2.448
147.0	1.266	2.217
150.0	1.232	2.016
153.0	1.218	1.805
156.0	1.204	1.594
159.0	1.190	1.408
162.0	1.161	1.272
165.0	1.121	1.210
168.0	1.085	1.192
171.0	1.010	1.146
174.0	0.9345	1.056
177.0	0.5868	0.9302
180.0	0.4674	0.5026

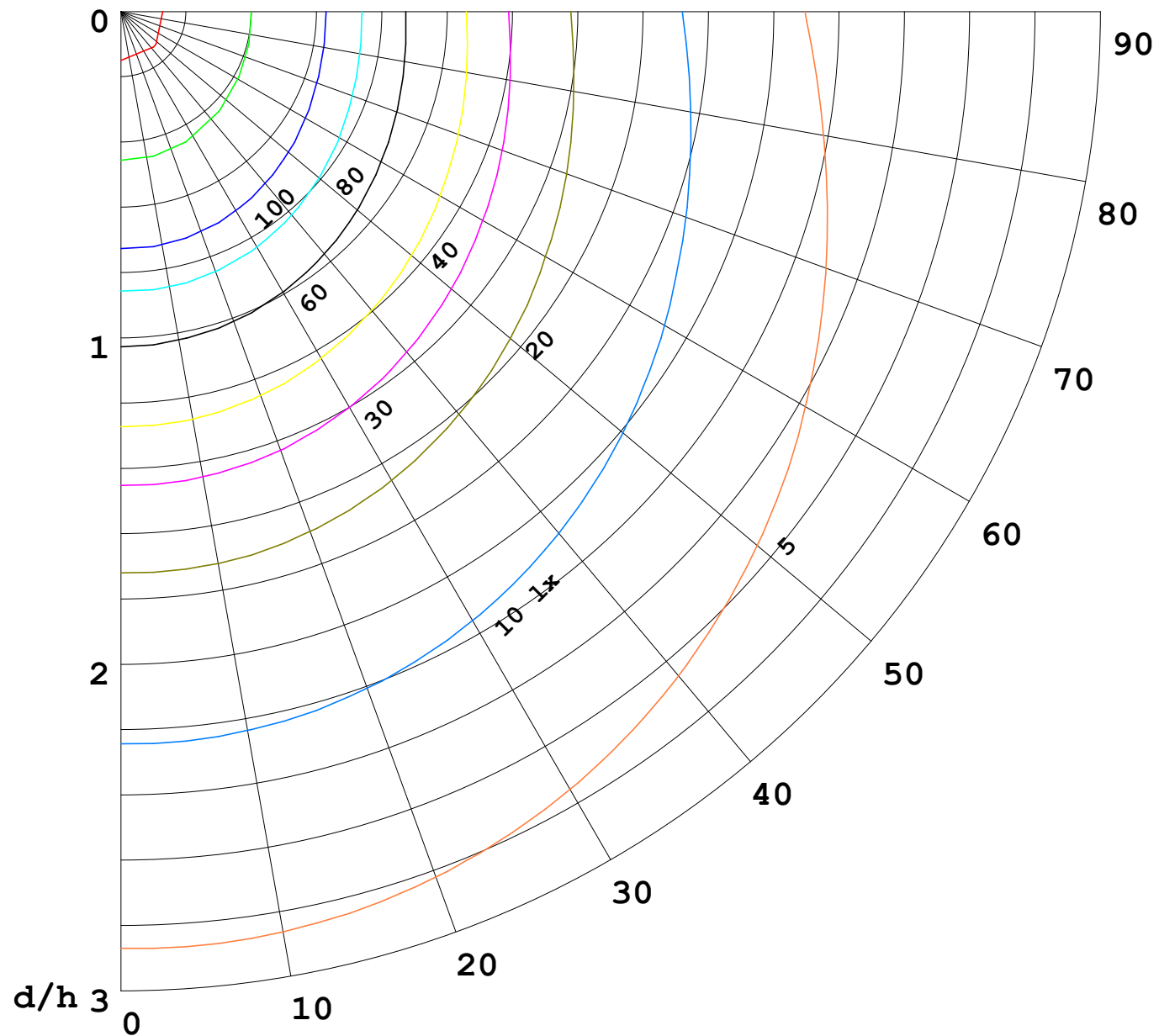
C Range: 0 - 360DEG
C Interval: 30.0DEG
Test Speed: HIGH
Temperature:25.3DEG
Operators:LPC
Test Date:2021-12-03

γ Range: 0 - 180DEG
γ Interval: 1.0DEG
Test System:EVERFINE GO-2000B_V1 SYSTEM V2.0.362
Humidity:65.0%
Test Distance:9.200m [K=1.0000]
Remarks:



1000 lm

$\kappa = 1$



F = 5000 lm
 K = 0.7
 Hcc = 0.0 m
 Hfc = 0.0 m
 Eave = 100 lx

	Pcc	Pw	Pfc
—	70	50	30
—	50	30	20

