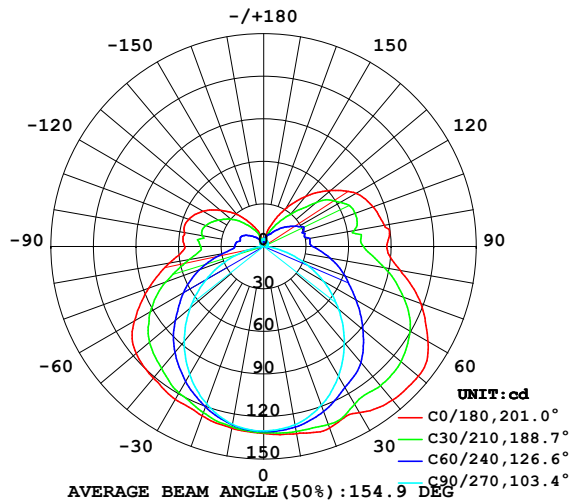


LUMINAIRE PHOTOMETRIC TEST REPORT

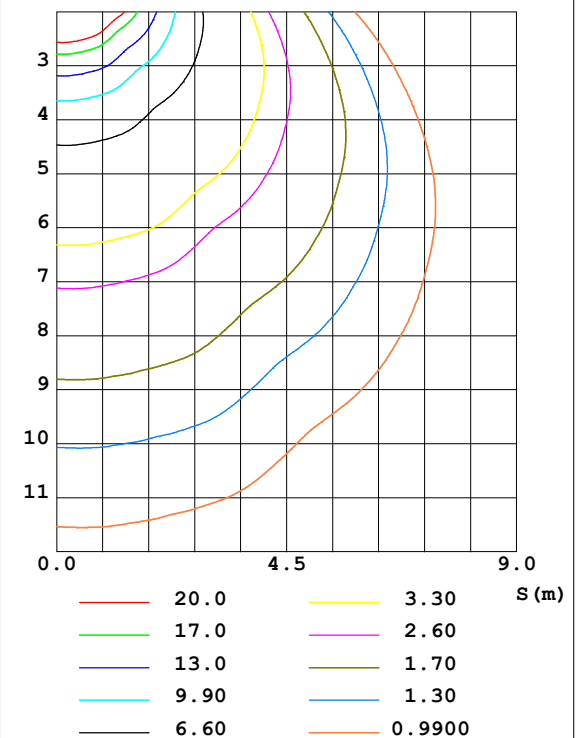
Test:U:24.00V I:0.6614A P:15.87W PF:1.000 Lamp Flux:718.479x1 lm		
NAME: SF18-24V-2835-120-2200+5700-80	TYPE: 硅胶	WEIGHT:
DIM.: 16.5*16.5MM	SPEC.:	SERIAL No.:2022011003
MFR.: OLYMPIA	SUR.:1*0.0165	PROTECTION ANGLE:

DATA OF LAMP		PHOTOMETRIC DATA Eff: 45.26 lm/W			
MODEL	2835	I _{max} (cd)	142.5	S/MH (C0/180)	1.63
NOMINAL POWER (W)	15	LOR (%)	100.0	S/MH (C90/270)	1.21
RATED VOLTAGE (V)	24	TOTAL FLUX (lm)	718.48	η UP, DN (C0-180)	13.5, 37.5
NOMINAL FLUX (lm)	718.479	CIE CLASS	SEMI-D.	η UP, DN (C180-360)	12.6, 36.4
LAMPS INSIDE	1	η up (%)	26.1	CIBSE SHR NOM	1.50
TEST VOLTAGE (V)	24.0	η down (%)	73.9	CIBSE SHR MAX	1.55

LUMINOUS INTENSITY DISTRIBUTION DIAGRAM



C0 PLANE ISOLUX DIAGRAM (UNIT:lx)



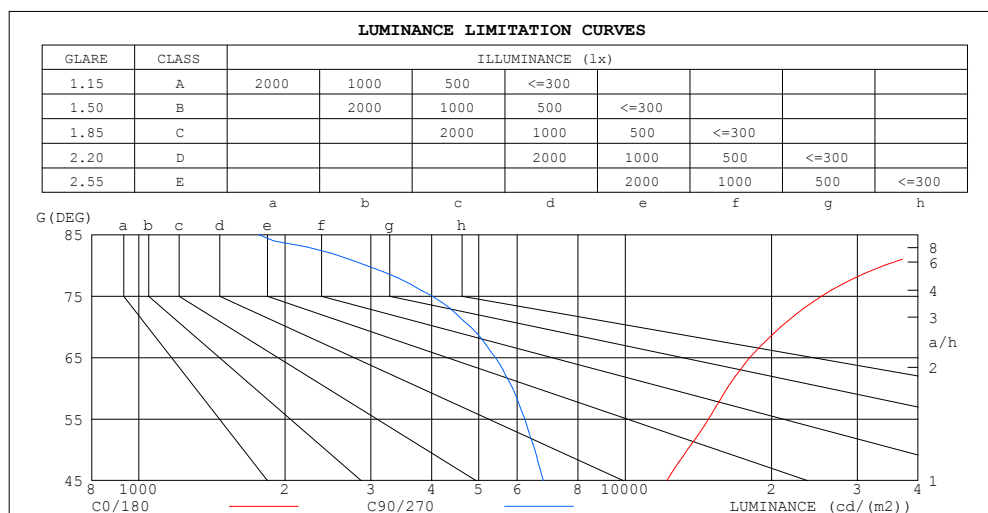
C Range: 0 - 360DEG
C Interval: 30.0DEG
Test Speed: HIGH
Temperature: 25.3DEG
Operators: LPC
Test Date: 2022-01-10

γ Range: 0 - 180DEG
γ Interval: 1.0DEG
Test System: EVERFINE GO-2000B_V1 SYSTEM V2.0.269
Humidity: 65.0%
Test Distance: 9.200m [K=1.0000]
Remarks:

ZONAL FLUX DIAGRAM
AND LUMINANCE LIMITATION CURVES

ZONAL FLUX DIAGRAM:

γ	C0	C45	C90	C135	C180	C225	C270	C315	γ	Φ zone	Φ total	%lum, lamp
10	134.1	130.8	127.7	126.8	130.2	128.5	127.3	129.7	0- 10	12.40	12.40	1.73,1.73
20	136.3	128.7	119.0	120.6	127.0	122.5	118.0	126.0	10- 20	35.99	48.39	6.74,6.74
30	135.3	121.6	105.6	112.7	124.6	114.7	104.3	122.1	20- 30	56.01	104.4	14.5,14.5
40	141.4	117.4	88.50	103.0	121.2	104.8	87.30	114.6	30- 40	71.43	175.8	24.5,24.5
50	142.5	109.0	69.15	89.55	117.4	93.23	67.86	108.9	40- 50	81.30	257.1	35.8,35.8
60	133.7	97.19	48.44	73.34	105.4	78.88	47.00	99.27	50- 60	83.57	340.7	47.4,47.4
70	118.0	83.09	27.14	53.46	86.32	60.95	25.54	87.80	60- 70	76.88	417.6	58.1,58.1
80	97.81	67.01	8.386	36.88	67.34	41.29	6.812	73.82	70- 80	63.51	481.1	67,67
90	86.98	52.51	1.975	35.33	55.74	32.56	1.522	58.00	80- 90	49.80	530.9	73.9,73.9
100	86.47	48.88	2.337	32.60	56.87	31.72	1.823	49.06	90-100	44.53	575.4	80.1,80.1
110	82.06	48.74	2.533	28.81	56.31	30.57	2.050	50.66	100-110	41.17	616.6	85.8,85.8
120	75.13	45.36	2.971	23.32	49.70	26.53	2.668	49.19	110-120	36.83	653.4	90.9,90.9
130	61.45	35.10	3.332	16.94	39.72	20.84	3.216	41.09	120-130	28.59	682.0	94.9,94.9
140	46.11	22.72	3.694	11.11	29.67	14.83	3.683	28.86	130-140	18.52	700.5	97.5,97.5
150	30.49	14.36	4.297	6.722	18.91	9.698	4.442	19.88	140-150	10.44	711.0	99,99
160	16.70	9.341	4.433	3.927	11.16	5.832	4.940	13.36	150-160	5.060	716.0	99.7,99.7
170	5.285	6.270	4.699	3.464	3.929	3.752	5.387	9.617	160-170	1.979	718.0	99.9,99.9
180	3.799	4.023	4.749	5.604	3.744	3.857	5.759	5.569	170-180	0.4832	718.5	100,100
DEG	LUMINOUS INTENSITY:cd									UNIT:lm		



LUMINANCE cd/(m2)		
G (DEG)	C0/180	C90/270
85	62439	1763
80	34138	2927
75	25362	4010
70	20911	4810
65	18054	5409
60	16210	5872
55	14842	6215
50	13432	6520
45	12188	6785

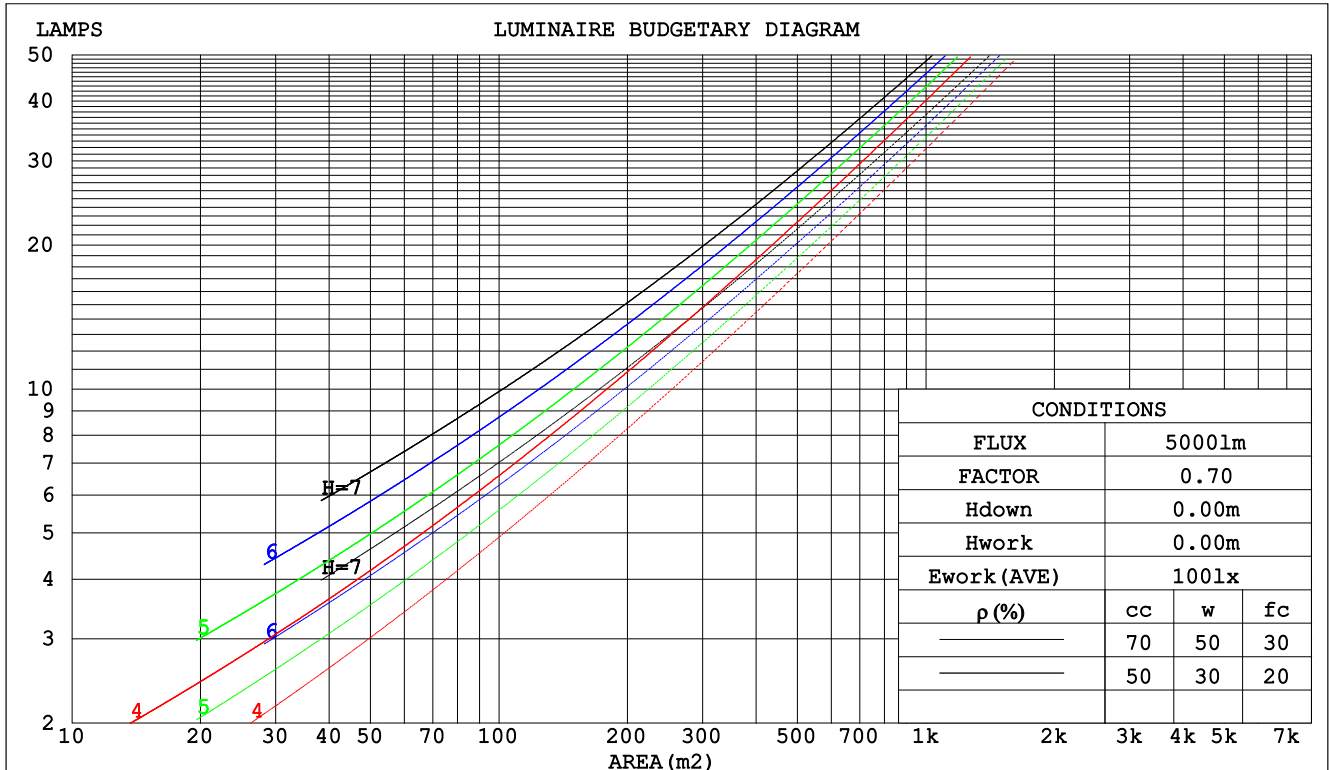
C Range: 0 - 360DEG
C Interval: 30.0DEG
Test Speed: HIGH
Temperature:25.3DEG
Operators:LPC
Test Date:2022-01-10

γ Range: 0 - 180DEG
 γ Interval: 1.0DEG
Test System:EVERFINE GO-2000B_V1 SYSTEM V2.0.269
Humidity:65.0%
Test Distance:9.200m [K=1.0000]
Remarks:

CU AND LUMINAIRE BUDGETARY ESTIMATE DIAGRAM

Test:U:24.00V I:0.6614A P:15.87W PF:1.000 Lamp Flux:718.479x1 lm		
NAME: SF18-24V-2835-120-2200+5700-80	TYPE: 硅胶	WEIGHT:
DIM.: 16.5*16.5MM	SPEC.:	SERIAL No.:2022011003
MFR.: OLYMPIA	SUR.:1*0.0165	PROTECTION ANGLE:

pcc	80%			70%			50%			30%			10%			0
pw	50%	30%	10%	50%	30%	10%	50%	30%	10%	50%	30%	10%	50%	30%	10%	0
pfc	20%			20%			20%			20%			20%			0
RCR	RCR:Room Cavity Ratio			Coefficients of Utilization(CU)												
0.0	1.13	1.13	1.13	1.07	1.07	1.07	.97	.97	.97	.87	.87	.87	.78	.78	.78	.74
1.0	.94	.89	.84	.89	.84	.80	.80	.76	.73	.72	.69	.66	.64	.62	.60	.56
2.0	.80	.73	.66	.76	.69	.63	.68	.63	.58	.61	.57	.53	.54	.51	.48	.44
3.0	.70	.61	.54	.66	.58	.51	.59	.53	.47	.53	.48	.43	.47	.43	.39	.36
4.0	.61	.52	.44	.58	.49	.43	.52	.45	.39	.47	.41	.36	.42	.37	.33	.30
5.0	.54	.45	.38	.51	.43	.36	.46	.39	.33	.41	.35	.31	.37	.32	.28	.25
6.0	.48	.39	.32	.46	.37	.31	.41	.34	.29	.37	.31	.27	.33	.28	.24	.22
7.0	.43	.34	.28	.41	.33	.27	.37	.30	.25	.34	.28	.23	.30	.25	.21	.19
8.0	.39	.31	.25	.38	.30	.24	.34	.27	.22	.31	.25	.21	.28	.23	.19	.17
9.0	.36	.28	.22	.34	.27	.21	.31	.25	.20	.28	.23	.18	.26	.21	.17	.15
10.0	.33	.25	.20	.32	.24	.19	.29	.22	.18	.26	.21	.17	.24	.19	.15	.13



C Range: 0 - 360DEG
C Interval: 30.0DEG
Test Speed: HIGH
Temperature:25.3DEG
Operators:LPC
Test Date:2022-01-10

γ Range: 0 - 180DEG
γ Interval: 1.0DEG
Test System:EVERFINE GO-2000B_V1 SYSTEM V2.0.269
Humidity:65.0%
Test Distance:9.200m [K=1.0000]
Remarks:

WEC AND CCEC

Test:U:24.00V I:0.6614A P:15.87W PF:1.000 Lamp Flux:718.479x1 lm					
NAME: SF18-24V-2835-120-2200+5700-80			TYPE: 硅胶		WEIGHT:
DIM.: 16.5*16.5MM			SPEC.:		SERIAL No.:2022011003
MFR.: OLYMPIA			SUR.:1*0.0165		PROTECTION ANGLE:

pcc	80%			70%			50%			30%			10%			0	
pw	50%	30%	10%	50%	30%	10%	50%	30%	10%	50%	30%	10%	50%	30%	10%	0	
pfc	20%			20%			20%			20%			20%			0	
RCR	RCR:Room Cavity Ratio						Wall Exitance Coefficients(WEC)										
0.0																	
1.0	.378	.215	.068	.363	.207	.066	.335	.192	.061	.309	.178	.057	.284	.165	.053		
2.0	.328	.180	.055	.315	.173	.053	.289	.161	.050	.265	.149	.047	.243	.137	.043		
3.0	.292	.155	.047	.280	.150	.045	.256	.139	.042	.235	.129	.039	.214	.119	.037		
4.0	.263	.137	.040	.252	.132	.039	.231	.122	.037	.211	.113	.034	.192	.105	.032		
5.0	.239	.122	.035	.229	.118	.034	.210	.109	.032	.192	.101	.030	.175	.093	.028		
6.0	.219	.110	.031	.210	.106	.031	.192	.099	.029	.176	.091	.027	.160	.084	.025		
7.0	.202	.100	.028	.194	.097	.028	.177	.090	.026	.162	.083	.024	.148	.077	.023		
8.0	.188	.092	.026	.180	.089	.025	.165	.082	.024	.151	.076	.022	.137	.070	.021		
9.0	.175	.085	.024	.168	.082	.023	.154	.076	.022	.141	.070	.020	.128	.065	.019		
10.0	.164	.079	.022	.157	.076	.021	.144	.071	.020	.132	.065	.019	.120	.060	.017		

pcc	80%			70%			50%			30%			10%			0
pw	50%	30%	10%	50%	30%	10%	50%	30%	10%	50%	30%	10%	50%	30%	10%	0
pfc	20%			20%			20%			20%			20%			0
RCR	RCR:Room Cavity Ratio						Ceiling Cavity Exitance Coefficients(CCEC)									
0.0	.389	.389	.389	.333	.333	.333	.227	.227	.227	.130	.130	.130	.042	.042	.042	
1.0	.386	.356	.330	.330	.306	.284	.226	.210	.196	.130	.122	.114	.042	.039	.037	
2.0	.379	.334	.296	.325	.287	.255	.222	.199	.178	.128	.116	.104	.041	.037	.034	
3.0	.372	.317	.274	.319	.274	.238	.219	.190	.167	.126	.111	.098	.041	.036	.032	
4.0	.364	.305	.260	.313	.264	.226	.215	.184	.159	.124	.108	.094	.040	.035	.031	
5.0	.357	.296	.250	.306	.256	.218	.211	.179	.154	.122	.105	.091	.039	.034	.030	
6.0	.349	.288	.244	.300	.249	.212	.207	.174	.150	.120	.103	.089	.039	.034	.029	
7.0	.343	.281	.238	.295	.244	.208	.204	.171	.147	.118	.101	.088	.038	.033	.029	
8.0	.336	.276	.235	.289	.239	.205	.200	.168	.145	.116	.099	.086	.038	.032	.029	
9.0	.330	.271	.232	.284	.235	.202	.197	.165	.143	.115	.098	.086	.037	.032	.028	
10.0	.324	.267	.229	.279	.232	.200	.194	.163	.142	.113	.096	.085	.037	.032	.028	

C Range: 0 - 360DEG
 C Interval: 30.0DEG
 Test Speed: HIGH
 Temperature:25.3DEG
 Operators:LPC
 Test Date:2022-01-10

γ Range: 0 - 180DEG
 γ Interval: 1.0DEG
 Test System:EVERFINE GO-2000B_V1 SYSTEM V2.0.269
 Humidity:65.0%
 Test Distance:9.200m [K=1.0000]
 Remarks:

Uncorrected UGR Table

Test:U:24.00V I:0.6614A P:15.87W PF:1.000 Lamp Flux:718.479x1 lm											
NAME: SF18-24V-2835-120-2200+5700-80						TYPE:硅胶			WEIGHT:		
DIM.: 16.5*16.5MM						SPEC.:			SERIAL No.:2022011003		
MFR.: OLYMPIA						SUR.:1*0.0165			PROTECTION ANGLE:		
ceiling/cavity	0.7	0.7	0.5	0.5	0.3	0.7	0.7	0.5	0.5	0.3	
walls	0.5	0.3	0.5	0.3	0.3	0.5	0.3	0.5	0.3	0.3	
working plane	0.2	0.2	0.2	0.2	0.2	0.2	0.2	0.2	0.2	0.2	
Room dimensions		Viewed crosswise					Viewed endwise				
x = 2H y = 2H	21.7	23.0	22.3	23.6	24.3	17.7	19.0	18.3	19.6	20.3	
	3H	24.5	25.7	25.2	26.4	27.1	19.1	20.3	19.8	20.9	21.7
	4H	26.0	27.2	26.7	27.8	28.6	19.7	20.8	20.3	21.4	22.2
	6H	27.6	28.7	28.3	29.4	30.2	20.0	21.0	20.7	21.7	22.5
	8H	28.5	29.5	29.2	30.2	31.0	20.1	21.1	20.8	21.8	22.6
	12H	29.5	30.5	30.2	31.2	32.0	20.1	21.1	20.8	21.8	22.6
4H	2H	22.2	23.3	22.8	23.9	24.7	19.4	20.5	20.1	21.2	22.0
	3H	25.3	26.3	26.0	27.0	27.8	21.1	22.1	21.8	22.8	23.6
	4H	27.0	27.9	27.7	28.6	29.5	21.9	22.8	22.6	23.5	24.3
	6H	28.8	29.6	29.6	30.4	31.2	22.5	23.3	23.2	24.0	24.9
	8H	29.8	30.6	30.6	31.3	32.2	22.7	23.4	23.4	24.2	25.1
	12H	31.0	31.7	31.7	32.4	33.4	22.8	23.4	23.5	24.2	25.1
8H	4H	27.3	28.0	28.0	28.8	29.7	23.4	24.1	24.2	24.9	25.8
	6H	29.4	30.1	30.2	30.8	31.8	24.4	25.1	25.2	25.9	26.8
	8H	30.7	31.2	31.4	32.0	33.0	24.9	25.5	25.7	26.3	27.2
	12H	32.1	32.6	32.9	33.4	34.4	25.2	25.7	26.1	26.5	27.5
12H	4H	27.3	28.0	28.1	28.7	29.7	23.9	24.6	24.7	25.4	26.3
	6H	29.5	30.1	30.3	30.9	31.9	25.2	25.8	26.0	26.6	27.5
	8H	30.9	31.3	31.7	32.2	33.2	25.9	26.3	26.7	27.2	28.2
Variations with the observer position at spacings:											
S = 1.0H	+ 0.1 / - 0.1					+ 0.1 / - 0.1					
1.5H	+ 0.2 / - 0.2					+ 0.2 / - 0.3					
2.0H	+ 0.2 / - 0.3					+ 0.2 / - 0.4					

CIE Pub.117 Corrected 718.5 lm Total Lamp Luminous Flux. (8log(F/F0) = -1.1)

C Range: 0 - 360DEG
C Interval: 30.0DEG
Test Speed: HIGH
Temperature:25.3DEG
Operators:LPC
Test Date:2022-01-10

γ Range: 0 - 180DEG
γ Interval: 1.0DEG
Test System:EVERFINE GO-2000B_V1 SYSTEM V2.0.269
Humidity:65.0%
Test Distance:9.200m [K=1.0000]
Remarks:

UTILIZATION FACTORS TABLE

Test:U:24.00V I:0.6614A P:15.87W PF:1.000 Lamp Flux:718.479x1 lm		
NAME: SF18-24V-2835-120-2200+5700-80	TYPE: 硅胶	WEIGHT:
DIM.: 16.5*16.5MM	SPEC.:	SERIAL No.:2022011003
MFR.: OLYMPIA	SUR.:1*0.0165	PROTECTION ANGLE:

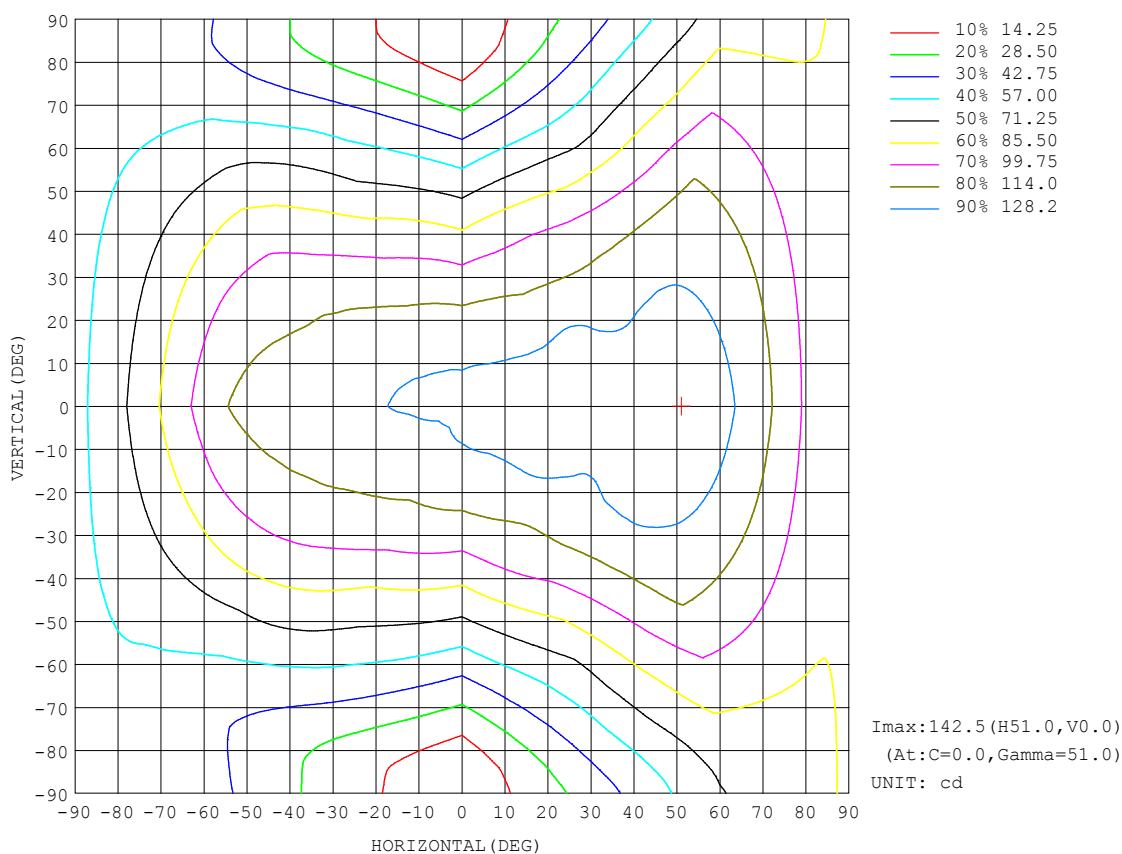
REFLECTANCE										
Ceiling	0.8	0.8	0.8	0.7	0.7	0.7	0.5	0.5	0.5	0
Walls	0.7	0.5	0.3	0.7	0.5	0.3	0.7	0.5	0.3	0
Working plane	0.2	0.2	0.2	0.2	0.2	0.2	0.2	0.2	0.2	0
ROOM INDEX	UTILIZATION FACTORS (PERCENT) $k(RI) \times RCR = 5$									
$k = 0.60$	45	33	25	44	32	25	41	31	24	18
0.80	54	41	33	52	40	32	49	38	31	23
1.00	62	49	40	60	47	39	55	47	38	28
1.25	69	56	47	66	54	46	61	51	44	33
1.50	74	62	53	71	60	51	65	56	49	37
2.00	81	70	62	78	68	60	71	63	56	43
2.50	86	76	68	82	73	65	75	67	61	47
3.00	90	80	73	86	77	70	78	71	65	50
4.00	95	87	80	90	83	77	82	76	71	54
5.00	98	91	85	93	87	81	84	79	75	57
ROOM INDEX	UF(total)									Direct
According to DIN EN 13032-2 2004			Suspended					SHRNM = 1.25		

C Range: 0 - 360DEG
C Interval: 30.0DEG
Test Speed: HIGH
Temperature:25.3DEG
Operators:LPC
Test Date:2022-01-10

γ Range: 0 - 180DEG
 γ Interval: 1.0DEG
Test System:EVERFINE GO-2000B_V1 SYSTEM V2.0.269
Humidity:65.0%
Test Distance:9.200m [K=1.0000]
Remarks:

ISOCANDELA DIAGRAM

Test:U:24.00V I:0.6614A P:15.87W PF:1.000 Lamp Flux:718.479x1 lm		
NAME: SF18-24V-2835-120-2200+5700-80	TYPE: 硅胶	WEIGHT:
DIM.: 16.5*16.5MM	SPEC.:	SERIAL No.:2022011003
MFR.: OLYMPIA	SUR.:1*0.0165	PROTECTION ANGLE:

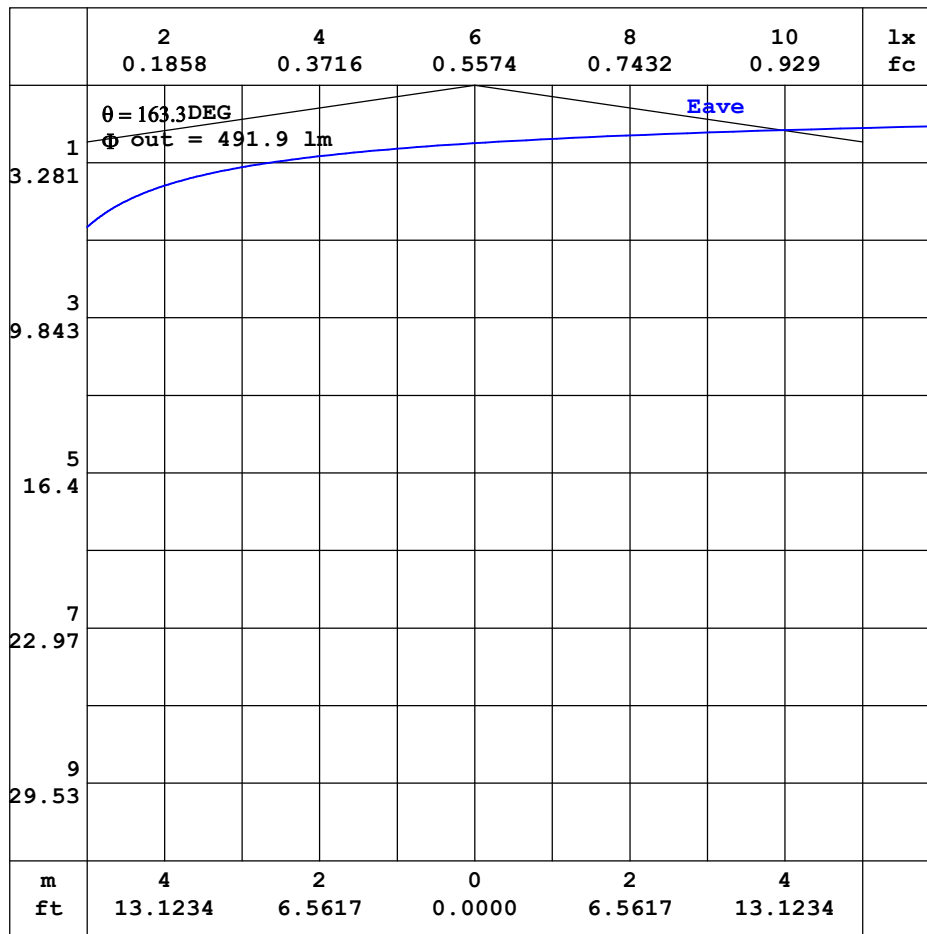


C Range: 0 - 360DEG
C Interval: 30.0DEG
Test Speed: HIGH
Temperature:25.3DEG
Operators:LPC
Test Date:2022-01-10

γ Range: 0 - 180DEG
 γ Interval: 1.0DEG
Test System:EVERFINE GO-2000B_V1 SYSTEM V2.0.269
Humidity:65.0%
Test Distance:9.200m [K=1.0000]
Remarks:

AAI CURVES

Test:U:24.00V I:0.6614A P:15.87W PF:1.000 Lamp Flux:718.479x1 lm		
NAME: SF18-24V-2835-120-2200+5700-80	TYPE: 硅胶	WEIGHT:
DIM.: 16.5*16.5MM	SPEC.:	SERIAL No.:2022011003
MFR.: OLYMPIA	SUR.:1*0.0165	PROTECTION ANGLE:



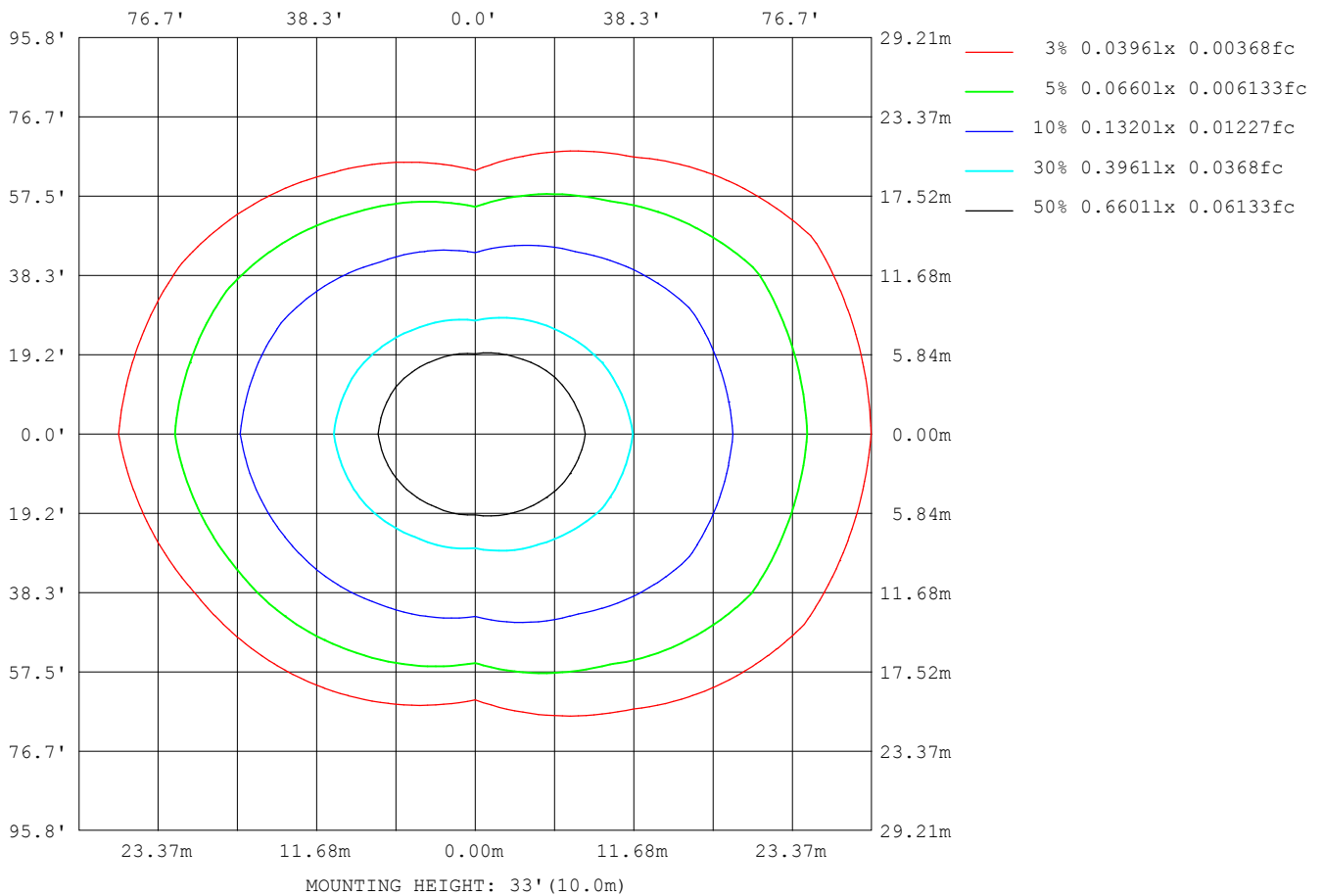
Note: The Curves indicate the illuminated area and the average illumination when the luminaire is at different distance.

C Range: 0 - 360DEG
C Interval: 30.0DEG
Test Speed: HIGH
Temperature: 25.3DEG
Operators: LPC
Test Date: 2022-01-10

γ Range: 0 - 180DEG
 γ Interval: 1.0DEG
Test System: EVERFINE GO-2000B_V1 SYSTEM V2.0.269
Humidity: 65.0%
Test Distance: 9.200m [K=1.0000]
Remarks:

ISOLUX DIAGRAM

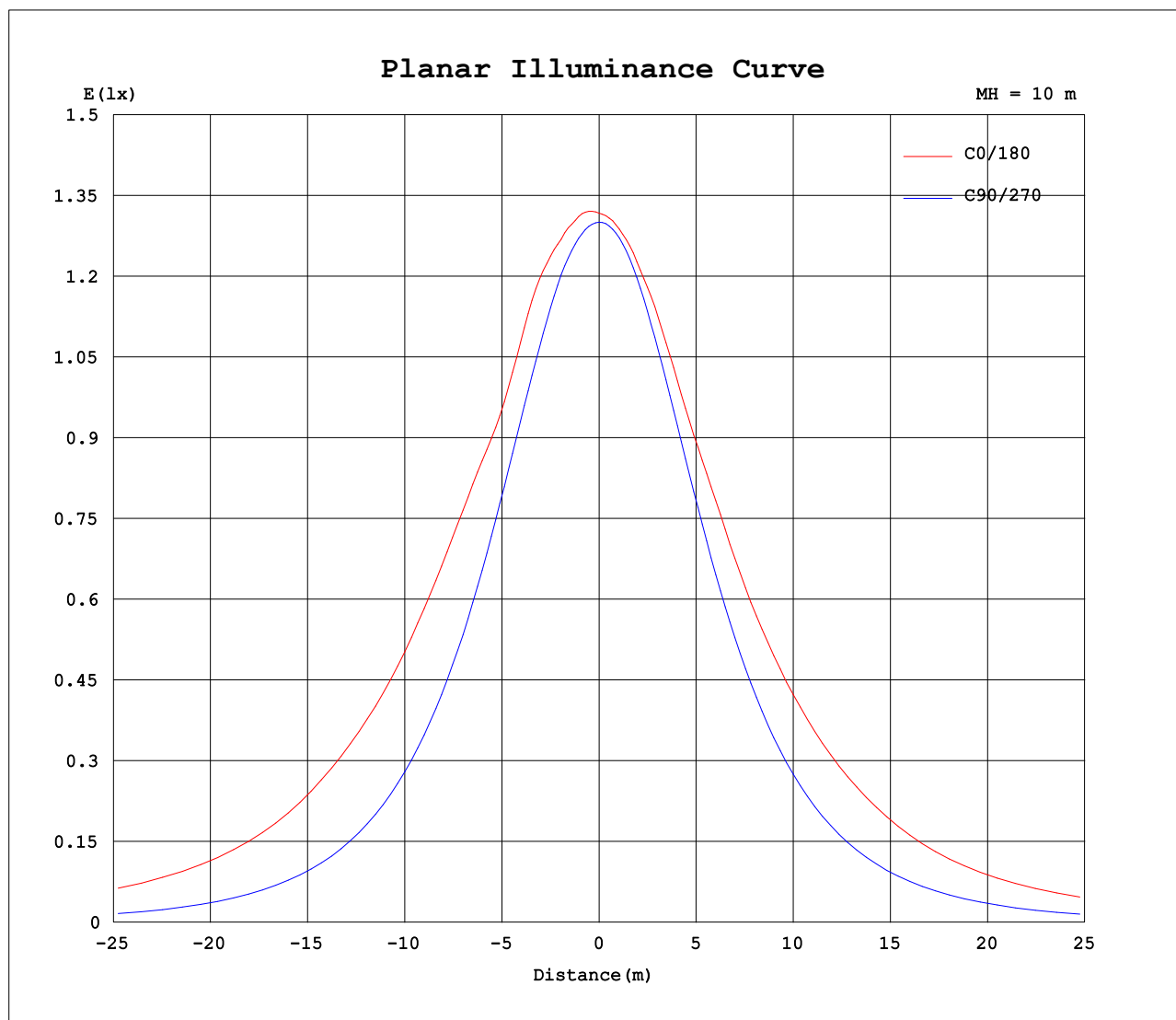
Test:U:24.00V I:0.6614A P:15.87W PF:1.000 Lamp Flux:718.479x1 lm		
NAME: SF18-24V-2835-120-2200+5700-80	TYPE: 硅胶	WEIGHT:
DIM.: 16.5*16.5MM	SPEC.:	SERIAL No.:2022011003
MFR.: OLYMPIA	SUR.:1*0.0165	PROTECTION ANGLE:



C Range: 0 - 360DEG
C Interval: 30.0DEG
Test Speed: HIGH
Temperature:25.3DEG
Operators:LPC
Test Date:2022-01-10

γ Range: 0 - 180DEG
 γ Interval: 1.0DEG
Test System:EVERFINE GO-2000B_V1 SYSTEM V2.0.269
Humidity:65.0%
Test Distance:9.200m [K=1.0000]
Remarks:

Planar Illuminance Curve



C Range: 0 - 360DEG
C Interval: 30.0DEG
Test Speed: HIGH
Temperature: 25.3DEG
Operators: LPC
Test Date: 2022-01-10

γ Range: 0 - 180DEG
 γ Interval: 1.0DEG
Test System: EVERFINE GO-2000B_V1 SYSTEM V2.0.269
Humidity: 65.0%
Test Distance: 9.200m [K=1.0000]
Remarks:

LUMINOUS DISTRIBUTION INTENSITY DATA

Test:U:24.00V I:0.6614A P:15.87W PF:1.000 Lamp Flux:718.479x1 lm		
NAME: SF18-24V-2835-120-2200+5700-80	TYPE: 硅胶	WEIGHT:
DIM.: 16.5*16.5MM	SPEC.:	SERIAL No.:2022011003
MFR.: OLYMPIA	SUR.:1*0.0165	PROTECTION ANGLE:

Table--1

UNIT: cd

C (DEG) γ (DEG)	0	30	60	90	120	150	180	210	240	270	300	330							
0	132	131	131	130	130	130	132	131	131	130	130	130							
5	133	132	130	129	128	129	131	131	130	129	130	130							
10	134	132	129	128	127	127	130	129	128	127	129	131							
15	136	133	127	124	123	124	129	128	124	123	126	131							
20	136	134	124	119	119	122	127	125	120	118	122	130							
25	134	133	120	113	114	120	125	121	115	112	118	130							
30	135	128	115	106	108	117	125	119	110	104	113	131							
35	139	127	111	97.2	103	114	123	116	104	96.2	109	127							
40	141	128	107	88.5	95.6	110	121	112	97.5	87.3	106	124							
45	142	128	99.5	79.2	87.3	106	120	109	90.2	77.9	101	124							
50	142	126	91.5	69.2	79.3	99.8	117	105	81.3	67.9	93.3	125							
55	140	123	83.4	58.8	71.6	92.1	113	99.4	73.0	57.5	85.2	124							
60	134	119	75.2	48.4	63.5	83.2	105	92.5	65.3	47.0	77.1	121							
65	126	113	67.5	37.7	54.7	72.0	95.9	83.8	57.2	36.2	69.1	118							
70	118	105	61.2	27.1	45.2	61.7	86.3	73.5	48.4	25.5	62.4	113							
75	108	96.3	54.4	17.1	35.4	52.9	76.8	62.6	38.7	15.4	56.3	106							
80	97.8	86.5	47.5	8.39	27.0	46.7	67.3	53.2	29.4	6.81	50.0	97.7							
85	89.8	77.0	40.7	2.54	22.6	47.0	59.0	46.0	22.4	1.79	43.4	88.8							
90	87.0	70.4	34.6	1.98	21.9	48.8	55.7	44.5	20.6	1.52	37.2	78.8							
95	89.1	68.9	32.9	2.06	20.8	50.2	57.2	46.4	20.1	1.49	33.4	71.5							
100	86.5	64.8	33.0	2.34	19.8	45.4	56.9	44.0	19.4	1.82	33.7	64.4							
105	84.3	68.3	29.8	2.41	17.9	43.3	57.7	45.0	17.2	1.91	32.0	67.4							
110	82.1	68.7	28.8	2.53	17.4	40.2	56.3	43.5	17.7	2.05	31.6	69.8							
115	79.3	67.4	31.5	2.72	16.0	36.4	53.5	40.7	17.2	2.32	32.1	69.3							
120	75.1	62.4	28.3	2.97	13.9	32.7	49.7	37.3	15.8	2.67	30.7	67.6							
125	68.6	57.2	25.0	3.18	11.7	28.6	45.1	33.7	13.6	2.97	29.1	64.8							
130	61.5	48.4	21.9	3.33	9.41	24.5	39.7	30.0	11.7	3.22	26.0	56.2							
135	54.0	37.4	18.9	3.48	7.64	19.9	34.7	26.0	9.87	3.44	22.8	46.7							
140	46.1	29.6	15.8	3.69	6.14	16.1	29.7	21.3	8.35	3.68	19.6	38.1							
145	38.2	23.6	13.2	3.90	4.83	12.7	23.9	17.4	6.88	3.95	16.6	32.0							
150	30.5	18.0	10.7	4.30	4.07	9.37	18.9	14.0	5.35	4.44	13.7	26.0							
155	23.5	13.6	9.60	4.35	3.88	6.29	14.8	11.2	4.09	4.68	12.6	20.5							
160	16.7	9.95	8.73	4.43	3.50	4.35	11.2	7.81	3.85	4.94	11.5	15.2							
165	11.9	7.35	7.71	4.60	3.44	3.81	7.03	4.91	3.64	5.19	10.2	11.9							
170	5.29	5.94	6.60	4.70	3.43	3.50	3.93	4.07	3.44	5.39	9.11	10.1							
175	4.00	4.54	5.66	4.80	3.41	3.42	3.67	3.74	3.44	5.57	7.72	8.11							
180	3.80	3.81	4.23	4.75	5.81	5.39	3.74	3.81	3.90	5.76	5.75	5.39							

C Range: 0 - 360DEG
C Interval: 30.0DEG
Test Speed: HIGH
Temperature:25.3DEG
Operators:LPC
Test Date:2022-01-10

γ Range: 0 - 180DEG
γ Interval: 1.0DEG
Test System:EVERFINE GO-2000B_V1 SYSTEM V2.0.269
Humidity:65.0%
Test Distance:9.200m [K=1.0000]
Remarks:

Photometric Data Table [cd]

G/C	0.0	30.0	60.0	90.0	120.0	150.0	180.0	210.0	240.0	270.0
0.0	131.8	131.3	130.6	130.0	129.9	129.9	131.8	131.3	130.6	130.0
3.0	132.6	131.7	130.6	129.8	129.0	128.9	131.4	130.9	130.2	129.9
6.0	133.3	132.2	130.2	129.1	128.2	128.3	130.9	130.3	129.5	129.2
9.0	133.9	132.5	129.5	128.1	127.2	127.3	130.4	129.6	128.4	127.9
12.0	134.6	132.5	128.5	126.5	125.8	125.8	129.5	128.5	126.5	125.9
15.0	135.9	132.5	127.0	124.1	123.4	124.3	129.0	127.6	124.5	123.3
18.0	136.8	133.2	125.2	121.2	120.8	122.7	127.8	125.9	122.2	120.4
21.0	135.7	133.8	123.1	118.0	118.1	121.9	126.7	124.1	119.4	116.9
24.0	134.1	133.3	120.5	114.3	114.9	121.0	125.3	122.2	116.4	113.0
27.0	133.1	130.9	117.6	110.1	111.7	119.2	124.7	120.4	113.4	108.9
30.0	135.3	128.4	114.8	105.6	108.4	116.9	124.6	119.3	110.1	104.3
33.0	138.0	126.8	112.7	100.8	105.3	114.9	123.8	117.8	106.4	99.43
36.0	139.9	127.0	110.7	95.57	101.4	113.2	122.5	115.3	102.7	94.36
39.0	141.0	128.2	107.9	90.23	97.14	111.2	121.3	113.0	98.85	89.19
42.0	142.0	128.1	104.0	84.81	92.26	109.0	120.7	110.8	94.70	83.58
45.0	142.2	127.9	99.48	79.16	87.34	106.1	119.7	108.9	90.16	77.87
48.0	142.3	127.3	94.70	73.10	82.30	102.6	118.5	106.7	84.95	71.88
51.0	142.5	125.9	89.86	67.10	77.67	98.54	116.8	104.2	79.60	65.80
54.0	141.2	124.0	85.07	60.86	73.08	93.77	114.4	100.9	74.59	59.68
57.0	138.1	121.7	80.15	54.63	68.28	88.54	110.6	96.54	70.01	53.31
60.0	133.7	119.2	75.22	48.44	63.53	83.15	105.4	92.45	65.30	47.00
63.0	129.1	116.0	70.44	41.99	58.14	76.86	99.76	87.25	60.51	40.61
66.0	124.5	111.6	66.13	35.50	52.90	69.77	93.95	81.86	55.52	34.10
69.0	119.7	106.8	62.50	29.29	47.19	63.67	88.35	76.08	50.21	27.68
72.0	114.3	101.4	58.52	23.01	41.30	58.20	82.40	68.81	44.51	21.43
75.0	108.3	96.30	54.44	17.12	35.37	52.93	76.82	62.55	38.73	15.37
78.0	101.8	90.71	50.40	11.70	29.97	48.84	71.14	56.81	32.97	9.875
81.0	95.96	84.40	46.14	6.985	25.72	46.12	65.57	51.48	27.70	5.374
84.0	91.14	78.71	41.97	3.270	22.82	46.75	60.50	47.16	23.47	2.023
87.0	87.79	73.64	38.10	2.120	22.29	47.69	57.09	44.11	20.85	1.544
90.0	86.98	70.43	34.59	1.975	21.86	48.80	55.74	44.53	20.60	1.522
93.0	87.98	68.59	32.84	2.016	21.21	49.94	56.73	45.54	20.32	1.500
96.0	89.34	69.24	32.93	2.086	20.57	50.05	57.27	46.98	19.97	1.503
99.0	86.85	63.44	33.00	2.207	19.97	45.69	56.62	43.38	19.58	1.718
102.0	85.64	66.97	30.64	2.387	18.65	44.46	57.44	44.88	17.93	1.890
105.0	84.30	68.25	29.83	2.413	17.90	43.33	57.69	44.99	17.19	1.915
108.0	83.10	68.71	30.62	2.488	17.76	41.52	57.06	44.30	17.38	1.975
111.0	81.47	68.56	29.59	2.553	17.28	39.51	55.86	42.95	17.67	2.090
114.0	79.80	67.80	30.72	2.674	16.43	37.20	54.16	41.37	17.33	2.256
117.0	77.74	65.79	30.87	2.815	15.23	34.92	52.11	39.36	16.73	2.457
120.0	75.13	62.37	28.34	2.971	13.92	32.73	49.70	37.28	15.77	2.668
123.0	71.34	59.20	26.45	3.111	12.64	30.32	47.10	35.05	14.62	2.864
126.0	67.31	56.19	24.32	3.207	11.13	27.80	44.12	32.98	13.20	3.025
129.0	62.94	50.60	22.43	3.302	9.759	25.27	40.83	30.75	12.06	3.166
132.0	58.41	43.33	20.59	3.383	8.634	22.60	37.66	28.33	10.99	3.312
135.0	54.01	37.44	18.90	3.478	7.637	19.93	34.68	26.03	9.867	3.437
138.0	49.23	32.99	17.03	3.604	6.753	17.54	31.67	23.35	8.867	3.583
141.0	44.52	28.31	15.34	3.730	5.853	15.34	28.61	20.46	8.154	3.734
144.0	39.79	24.73	13.76	3.855	5.079	13.12	24.91	18.17	7.218	3.895
147.0	35.05	21.40	12.31	4.077	4.375	11.60	21.94	16.06	6.269	4.150
150.0	30.49	18.01	10.72	4.297	4.071	9.372	18.91	14.04	5.354	4.442
153.0	26.14	15.26	9.938	4.332	3.971	7.553	16.40	12.51	4.535	4.578
156.0	22.19	12.75	9.430	4.362	3.810	5.690	14.07	10.41	3.975	4.734
159.0	17.93	10.56	8.943	4.408	3.569	4.542	11.95	8.463	3.899	4.885
162.0	14.77	8.685	8.280	4.508	3.443	4.100	9.011	6.350	3.754	5.030
165.0	11.91	7.351	7.712	4.599	3.438	3.814	7.026	4.915	3.643	5.186
168.0	6.003	6.581	7.039	4.659	3.433	3.598	4.329	4.308	3.508	5.332
171.0	4.969	5.707	6.340	4.719	3.425	3.478	3.824	3.981	3.433	5.423
174.0	4.129	4.797	5.827	4.780	3.412	3.428	3.689	3.795	3.436	5.518
177.0	3.905	4.302	5.274	4.815	3.884	3.423	3.669	3.599	3.439	5.639
180.0	3.799	3.815	4.232	4.749	5.815	5.393	3.744	3.815	3.900	5.759
G/C	300.0	330.0								
0.0	129.9	129.9								
3.0	130.0	130.2								
6.0	129.7	130.5								
9.0	129.1	130.5								
12.0	127.9	130.5								
15.0	126.0	130.6								
18.0	123.7	130.3								
21.0	121.1	130.1								
24.0	118.7	130.0								
27.0	116.2	130.6								
30.0	113.4	130.9								

C Range: 0 - 360DEG
 C Interval: 30.0DEG
 Test Speed: HIGH
 Temperature: 25.3DEG
 Operators: LPC
 Test Date: 2022-01-10

γ Range: 0 - 180DEG
 γ Interval: 1.0DEG
 Test System: EVERFINE GO-2000B_V1 SYSTEM V2.0.269
 Humidity: 65.0%
 Test Distance: 9.200m [K=1.0000]
 Remarks:

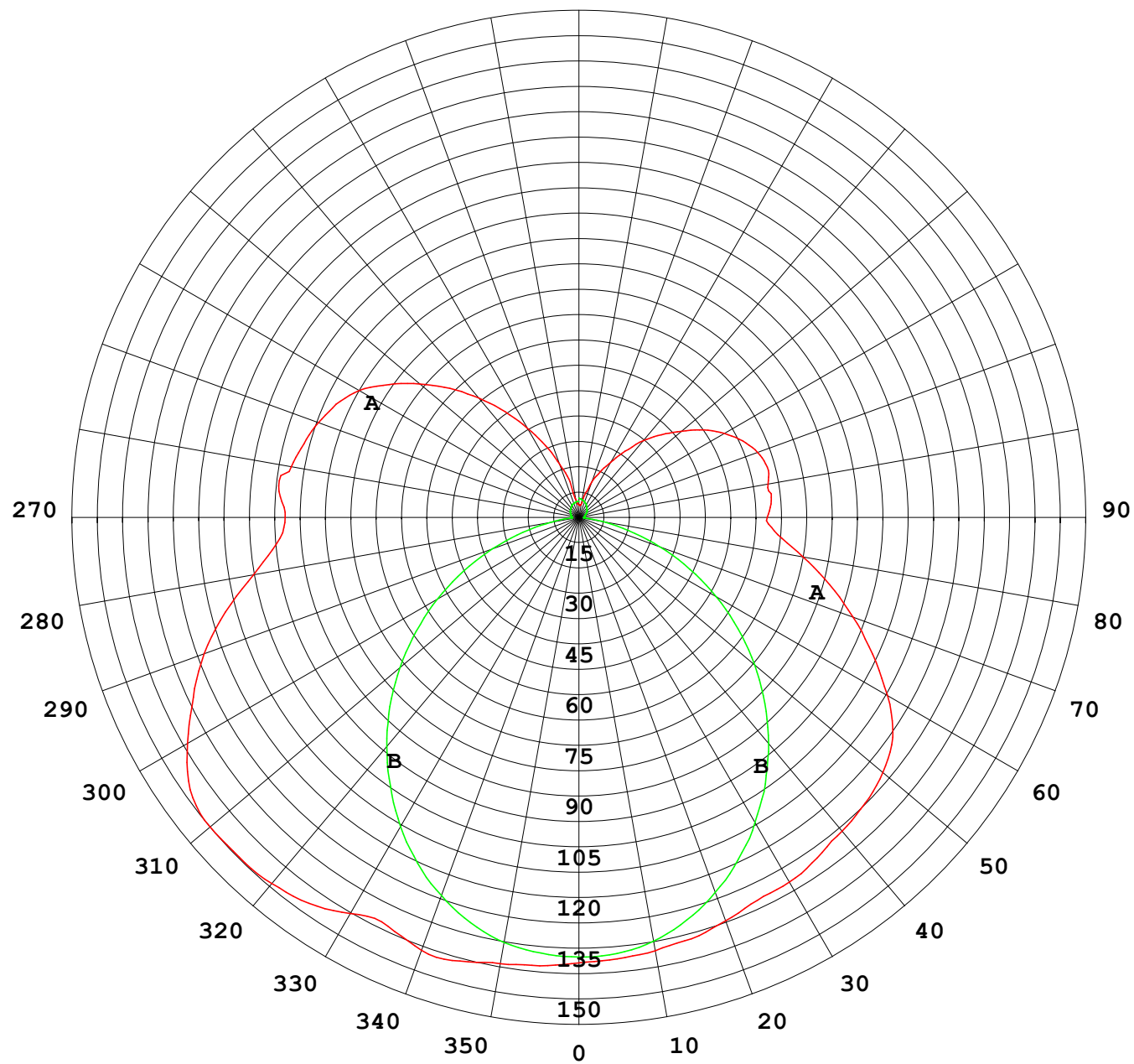
Photometric Data Table [cd]

33.0	110.5	129.2
36.0	108.2	126.3
39.0	106.2	124.2
42.0	104.0	123.4
45.0	100.5	124.2
48.0	96.14	124.5
51.0	91.73	124.6
54.0	86.85	124.1
57.0	81.83	123.0
60.0	77.13	121.4
63.0	72.16	119.4
66.0	67.57	117.0
69.0	63.60	114.4
72.0	59.97	110.6
75.0	56.28	105.9
78.0	52.58	100.9
81.0	48.64	96.16
84.0	44.74	90.79
87.0	40.85	84.58
90.0	37.23	78.76
93.0	34.36	73.89
96.0	33.33	70.70
99.0	33.75	63.79
102.0	32.28	65.86
105.0	32.02	67.43
108.0	31.44	69.11
111.0	31.31	69.81
114.0	30.91	69.56
117.0	31.82	68.71
120.0	30.75	67.63
123.0	30.10	66.25
126.0	28.42	63.81
129.0	26.75	58.10
132.0	24.78	52.54
135.0	22.80	46.73
138.0	20.89	40.84
141.0	19.00	36.47
144.0	17.22	32.91
147.0	15.37	29.91
150.0	13.73	26.04
153.0	12.90	22.60
156.0	12.33	19.27
159.0	11.70	16.08
162.0	10.94	13.69
165.0	10.22	11.88
168.0	9.562	10.94
171.0	8.872	9.733
174.0	8.003	8.573
177.0	7.144	7.206
180.0	5.749	5.388

C Range: 0 - 360DEG
 C Interval: 30.0DEG
 Test Speed: HIGH
 Temperature: 25.3DEG
 Operators: LPC
 Test Date: 2022-01-10

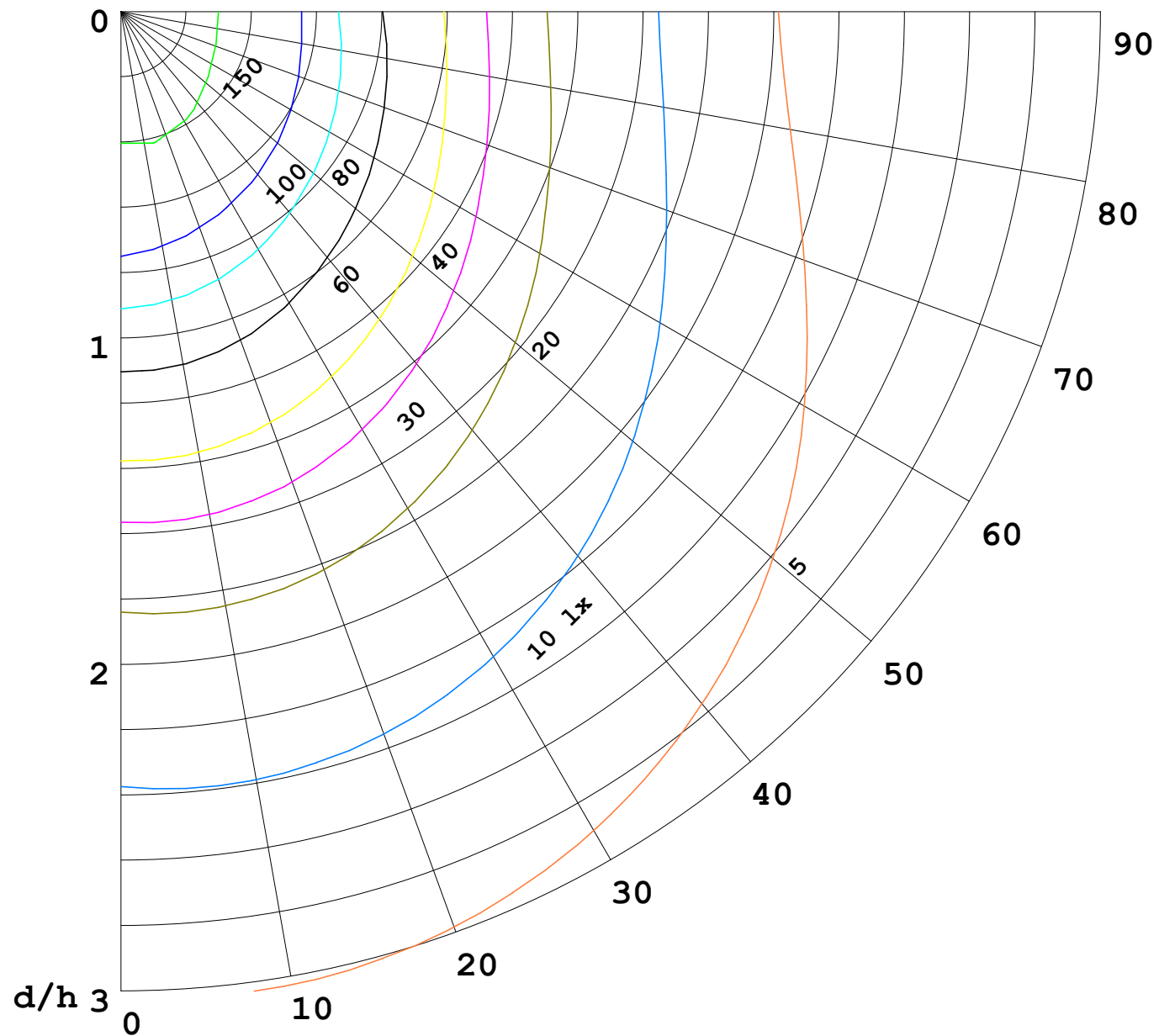
γ Range: 0 - 180DEG
 γ Interval: 1.0DEG
 Test System: EVERFINE GO-2000B_V1 SYSTEM V2.0.269
 Humidity: 65.0%
 Test Distance: 9.200m [K=1.0000]
 Remarks:

I (cd)



1000 lm

$\kappa = 1$



F = 5000 lm
 K = 0.7
 Hcc = 0.0 m
 Hfc = 0.0 m
 Eave = 100 lx

	Pcc	Pw	Pfc
—	70	50	30
—	50	30	20

