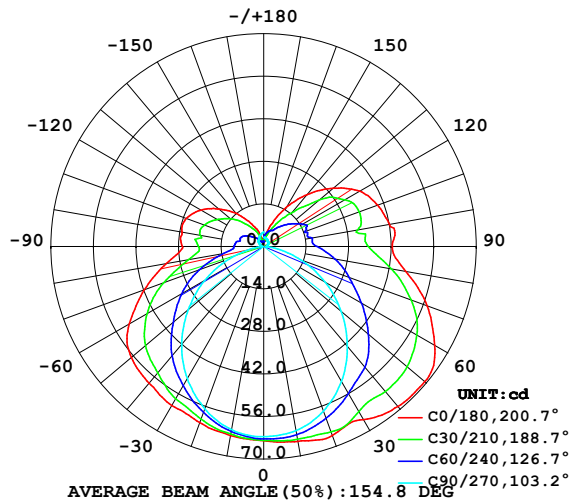


LUMINAIRE PHOTOMETRIC TEST REPORT

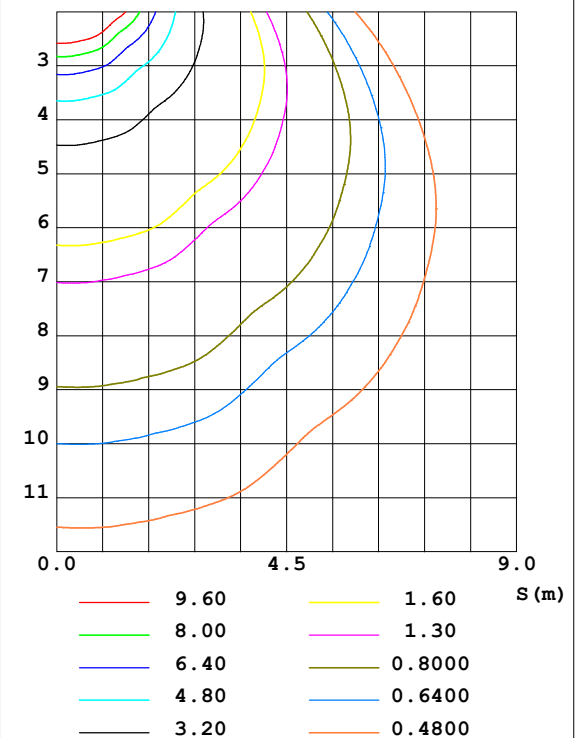
Test:U:24.00V I:0.3292A P:7.901W PF:1.000 Lamp Flux:340.832x1 lm		
NAME: SF18-24V-2835-120-2200+5700-80-2200	TYPE: 硅胶	WEIGHT:
DIM.: 16.5*16.5MM	SPEC.:	SERIAL No.:2022011001
MFR.: OLYMPIA	SUR.:1*0.0165	PROTECTION ANGLE:

DATA OF LAMP		PHOTOMETRIC DATA Eff: 44.08 lm/W			
MODEL	2835	I _{max} (cd)	69.27	S/MH (C0/180)	1.63
NOMINAL POWER (W)	8	LOR (%)	102.2	S/MH (C90/270)	1.22
RATED VOLTAGE (V)	24	TOTAL FLUX (lm)	348.23	η UP, DN (C0-180)	13.5, 37.8
NOMINAL FLUX (lm)	340.832	CIE CLASS	SEMI-D.	η UP, DN (C180-360)	13.5, 37.4
LAMPS INSIDE	1	η up (%)	27.0	CIBSE SHR NOM	1.50
TEST VOLTAGE (V)	24.0	η down (%)	75.2	CIBSE SHR MAX	1.55

LUMINOUS INTENSITY DISTRIBUTION DIAGRAM



C0 PLANE ISOLUX DIAGRAM (UNIT:lx)



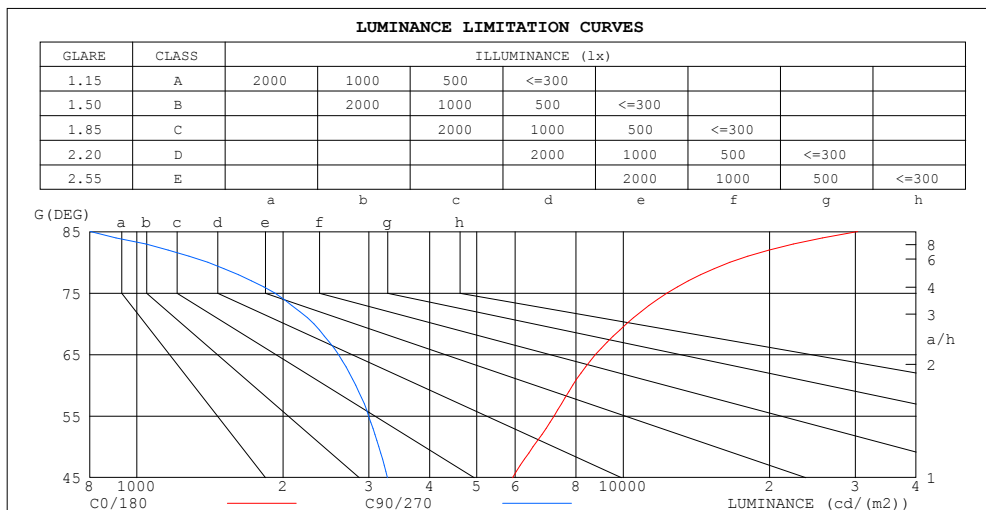
C Range: 0 - 360DEG
C Interval: 30.0DEG
Test Speed: HIGH
Temperature: 25.3DEG
Operators: LPC
Test Date: 2022-01-10

γ Range: 0 - 180DEG
γ Interval: 1.0DEG
Test System: EVERFINE GO-2000B_V1 SYSTEM V2.0.269
Humidity: 65.0%
Test Distance: 9.200m [K=1.0000]
Remarks:

ZONAL FLUX DIAGRAM AND LUMINANCE LIMITATION CURVES

ZONAL FLUX DIAGRAM:

γ	C0	C45	C90	C135	C180	C225	C270	C315	γ	Φ zone	Φ total	%lum, lamp
10	65.11	63.66	61.51	60.56	63.20	62.22	61.22	62.64	0- 10	5.993	5.993	1.72,1.76
20	66.19	62.52	57.62	57.98	61.61	59.24	56.80	60.99	10- 20	17.41	23.40	6.72,6.87
30	65.77	59.29	51.26	53.90	60.42	55.44	50.30	58.52	20- 30	27.08	50.48	14.5,14.8
40	68.73	57.10	42.90	48.38	58.71	50.62	42.04	56.20	30- 40	34.51	84.99	24.4,24.9
50	69.25	53.34	33.35	40.64	56.86	44.83	32.46	52.29	40- 50	39.08	124.1	35.6,36.4
60	64.97	47.67	23.28	31.19	51.10	37.75	22.41	48.85	50- 60	40.00	164.1	47.1,48.1
70	57.34	40.82	13.05	21.85	41.79	28.77	12.04	43.97	60- 70	36.72	200.8	57.7,58.9
80	47.49	33.24	4.010	17.33	32.52	19.26	3.036	38.83	70- 80	30.64	231.4	66.5,67.9
90	42.35	26.03	0.9248	17.10	26.80	15.66	0.6684	32.21	80- 90	24.87	256.3	73.6,75.2
100	42.08	23.83	1.111	14.33	27.36	15.18	0.8338	25.00	90-100	21.96	278.3	79.9,81.6
110	39.92	23.96	1.287	11.83	27.11	14.49	1.135	24.64	100-110	19.70	298.0	85.6,87.4
120	36.52	22.72	1.593	8.815	23.95	12.38	1.748	25.56	110-120	17.65	315.6	90.6,92.6
130	29.83	17.73	1.900	5.743	19.19	9.628	2.346	23.07	120-130	13.92	329.5	94.6,96.7
140	22.33	11.73	2.101	3.687	14.33	6.761	2.759	17.08	130-140	9.216	338.7	97.3,99.4
150	14.72	7.583	2.428	2.188	9.222	4.380	3.271	12.59	140-150	5.321	344.1	98.8,101
160	8.037	5.171	2.669	1.790	5.378	2.647	3.754	9.173	150-160	2.720	346.8	99.6,102
170	2.519	3.639	2.940	1.653	1.899	1.774	4.337	7.081	160-170	1.152	347.9	99.9,102
180	1.794	2.231	2.980	4.930	1.749	1.865	4.865	4.812	170-180	0.3015	348.2	100,102
DEG	LUMINOUS INTENSITY:cd									UNIT:lm		



LUMINANCE cd/(m2)		
G (DEG)	C0/180	C90/270
85	30333	803
80	16576	1399
75	12310	1923
70	10161	2312
65	8769	2599
60	7875	2822
55	7215	2997
50	6529	3145
45	5924	3277

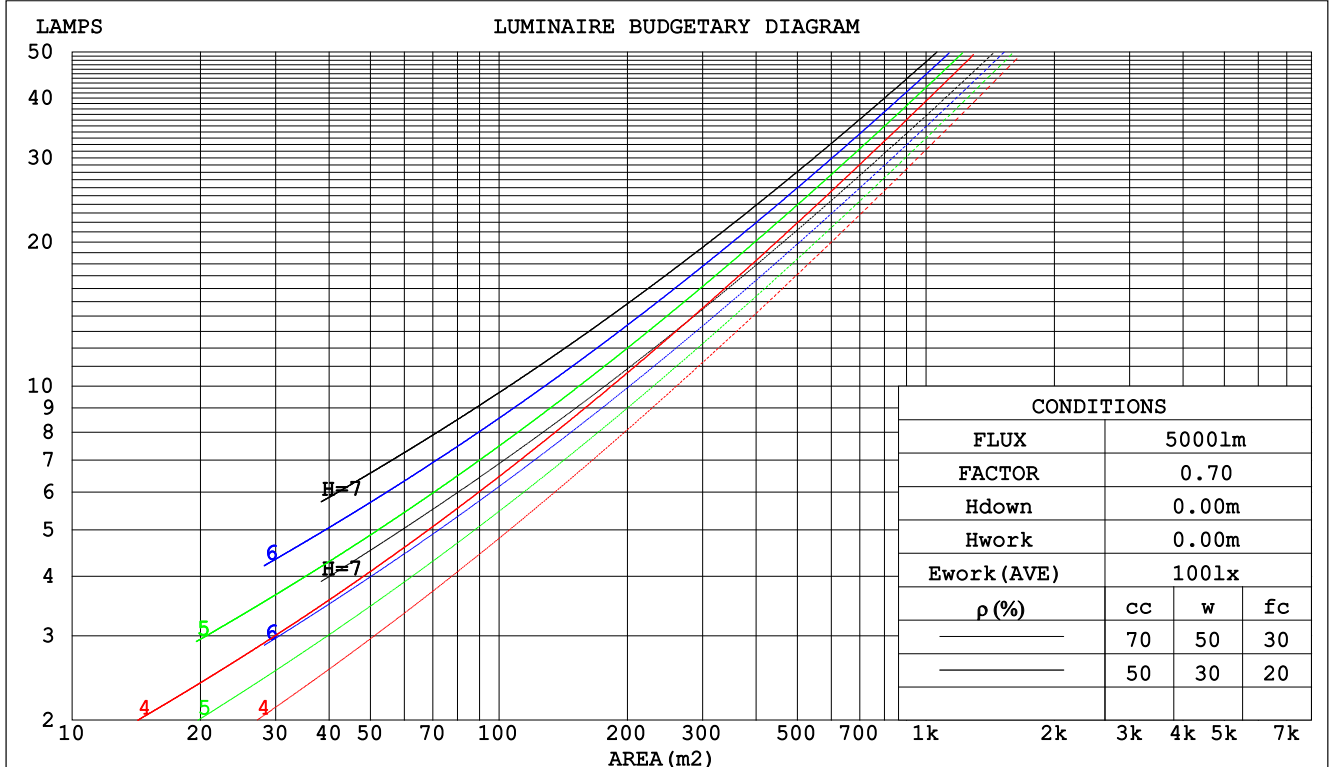
C Range: 0 - 360DEG
C Interval: 30.0DEG
Test Speed: HIGH
Temperature:25.3DEG
Operators:LPC
Test Date:2022-01-10

γ Range: 0 - 180DEG
 γ Interval: 1.0DEG
Test System:EVERFINE GO-2000B_V1 SYSTEM V2.0.269
Humidity:65.0%
Test Distance:9.200m [K=1.0000]
Remarks:

CU AND LUMINAIRE BUDGETARY ESTIMATE DIAGRAM

Test:U:24.00V I:0.3292A P:7.901W PF:1.000 Lamp Flux:340.832x1 lm		
NAME: SF18-24V-2835-120-2200+5700-80-2200	TYPE: 硅胶	WEIGHT:
DIM.: 16.5*16.5MM	SPEC.:	SERIAL No.:2022011001
MFR.: OLYMPIA	SUR.:1*0.0165	PROTECTION ANGLE:

pcc	80%			70%			50%			30%			10%			0
pw	50%	30%	10%	50%	30%	10%	50%	30%	10%	50%	30%	10%	50%	30%	10%	0
pfc	20%			20%			20%			20%			20%			0
RCR	RCR:Room Cavity Ratio						Coefficients of Utilization(CU)									
0.0	1.15	1.15	1.15	1.09	1.09	1.09	.99	.99	.99	.89	.89	.89	.79	.79	.79	.75
1.0	.96	.91	.86	.91	.86	.82	.82	.78	.74	.73	.70	.67	.65	.63	.61	.56
2.0	.82	.74	.67	.78	.71	.64	.70	.64	.59	.62	.58	.54	.55	.52	.48	.45
3.0	.71	.62	.55	.67	.59	.52	.60	.54	.48	.54	.48	.44	.48	.44	.40	.36
4.0	.62	.53	.45	.59	.50	.44	.53	.46	.40	.47	.42	.37	.42	.37	.33	.30
5.0	.55	.46	.38	.52	.44	.37	.47	.40	.34	.42	.36	.31	.38	.33	.29	.26
6.0	.49	.40	.33	.47	.38	.32	.42	.35	.29	.38	.32	.27	.34	.29	.25	.22
7.0	.44	.35	.29	.42	.34	.28	.38	.31	.26	.34	.28	.24	.31	.26	.22	.19
8.0	.40	.31	.25	.38	.30	.24	.35	.28	.23	.31	.25	.21	.28	.23	.19	.17
9.0	.37	.28	.23	.35	.27	.22	.32	.25	.20	.29	.23	.19	.26	.21	.17	.15
10.0	.34	.26	.20	.32	.25	.19	.29	.23	.18	.27	.21	.17	.24	.19	.16	.14



C Range: 0 - 360DEG
C Interval: 30.0DEG
Test Speed: HIGH
Temperature:25.3DEG
Operators:LPC
Test Date:2022-01-10

γ Range: 0 - 180DEG
γ Interval: 1.0DEG
Test System:EVERFINE GO-2000B_V1 SYSTEM V2.0.269
Humidity:65.0%
Test Distance:9.200m [K=1.0000]
Remarks:

WEC AND CCEC

Test:U:24.00V I:0.3292A P:7.901W PF:1.000 Lamp Flux:340.832x1 lm					
NAME: SF18-24V-2835-120-2200+5700-80-2200			TYPE:硅胶		WEIGHT:
DIM.: 16.5*16.5MM			SPEC.:		SERIAL No.:2022011001
MFR.: OLYMPIA			SUR.:1*0.0165		PROTECTION ANGLE:

pcc	80%			70%			50%			30%			10%			0	
pw	50%	30%	10%	50%	30%	10%	50%	30%	10%	50%	30%	10%	50%	30%	10%	0	
pfc	20%			20%			20%			20%			20%			0	
RCR	RCR:Room Cavity Ratio						Wall Exitance Coefficients(WEC)										
0.0																	
1.0	.388	.221	.070	.372	.212	.067	.343	.197	.063	.316	.182	.059	.292	.169	.055		
2.0	.336	.184	.056	.322	.177	.055	.295	.164	.051	.271	.152	.048	.248	.140	.044		
3.0	.299	.159	.048	.286	.153	.046	.262	.142	.043	.239	.131	.040	.219	.121	.037		
4.0	.269	.140	.041	.257	.135	.040	.235	.125	.037	.215	.115	.035	.196	.107	.032		
5.0	.244	.125	.036	.234	.120	.035	.214	.111	.033	.195	.103	.031	.178	.095	.029		
6.0	.224	.112	.032	.214	.108	.031	.196	.101	.029	.179	.093	.027	.163	.086	.025		
7.0	.207	.102	.029	.198	.099	.028	.181	.092	.026	.165	.085	.025	.150	.078	.023		
8.0	.192	.094	.026	.184	.090	.026	.168	.084	.024	.153	.078	.022	.140	.072	.021		
9.0	.179	.086	.024	.171	.083	.023	.157	.078	.022	.143	.072	.021	.130	.066	.019		
10.0	.167	.080	.022	.160	.077	.022	.147	.072	.020	.134	.067	.019	.122	.062	.018		

pcc	80%			70%			50%			30%			10%			0
pw	50%	30%	10%	50%	30%	10%	50%	30%	10%	50%	30%	10%	50%	30%	10%	0
pfc	20%			20%			20%			20%			20%			0
RCR	RCR:Room Cavity Ratio						Ceiling Cavity Exitance Coefficients(CCEC)									
0.0	.400	.400	.400	.342	.342	.342	.233	.233	.233	.134	.134	.134	.043	.043	.043	
1.0	.396	.366	.339	.339	.314	.292	.232	.216	.202	.134	.125	.117	.043	.040	.038	
2.0	.390	.343	.304	.334	.295	.263	.229	.204	.183	.132	.119	.108	.042	.038	.035	
3.0	.382	.327	.282	.328	.282	.245	.225	.196	.172	.130	.114	.101	.042	.037	.033	
4.0	.374	.314	.268	.321	.271	.233	.221	.189	.164	.128	.111	.097	.041	.036	.032	
5.0	.367	.304	.258	.315	.263	.225	.217	.184	.159	.126	.108	.094	.041	.035	.031	
6.0	.359	.296	.251	.309	.257	.219	.213	.180	.155	.124	.106	.092	.040	.035	.030	
7.0	.352	.290	.246	.303	.251	.214	.209	.176	.152	.122	.104	.090	.039	.034	.030	
8.0	.346	.284	.242	.297	.247	.211	.206	.173	.150	.120	.102	.089	.039	.033	.030	
9.0	.339	.279	.239	.292	.243	.208	.203	.170	.148	.118	.101	.088	.038	.033	.029	
10.0	.333	.275	.237	.287	.239	.206	.199	.168	.147	.116	.099	.088	.038	.033	.029	

C Range: 0 - 360DEG
 C Interval: 30.0DEG
 Test Speed: HIGH
 Temperature:25.3DEG
 Operators:LPC
 Test Date:2022-01-10

γ Range: 0 - 180DEG
 γ Interval: 1.0DEG
 Test System:EVERFINE GO-2000B_V1 SYSTEM V2.0.269
 Humidity:65.0%
 Test Distance:9.200m [K=1.0000]
 Remarks:

Uncorrected UGR Table

Test:U:24.00V I:0.3292A P:7.901W PF:1.000 Lamp Flux:340.832x1 lm											
NAME: SF18-24V-2835-120-2200+5700-80-2200						TYPE:硅胶		WEIGHT:			
DIM.: 16.5*16.5MM						SPEC.:		SERIAL No.:2022011001			
MFR.: OLYMPIA						SUR.:1*0.0165		PROTECTION ANGLE:			
ceiling/cavity	0.7	0.7	0.5	0.5	0.3	0.7	0.7	0.5	0.5	0.3	
walls	0.5	0.3	0.5	0.3	0.3	0.5	0.3	0.5	0.3	0.3	
working plane	0.2	0.2	0.2	0.2	0.2	0.2	0.2	0.2	0.2	0.2	
Room dimensions		Viewed crosswise					Viewed endwise				
x = 2H y = 2H	19.2	20.5	19.8	21.1	21.8	15.3	16.6	15.9	17.2	17.9	
	3H	22.1	23.2	22.7	23.9	24.6	16.7	17.8	17.3	18.5	19.2
	4H	23.6	24.7	24.2	25.3	26.1	17.2	18.3	17.8	19.0	19.7
	6H	25.2	26.2	25.8	26.9	27.7	17.5	18.6	18.2	19.2	20.1
	8H	26.0	27.0	26.7	27.7	28.6	17.6	18.6	18.3	19.3	20.1
	12H	27.1	28.0	27.8	28.7	29.6	17.6	18.6	18.3	19.3	20.1
4H	2H	19.7	20.8	20.4	21.5	22.3	17.0	18.1	17.6	18.8	19.5
	3H	22.8	23.8	23.5	24.5	25.3	18.7	19.6	19.4	20.3	21.2
	4H	24.5	25.4	25.2	26.1	27.0	19.4	20.3	20.2	21.0	21.9
	6H	26.3	27.1	27.1	27.9	28.8	20.0	20.8	20.8	21.6	22.5
	8H	27.3	28.1	28.1	28.8	29.8	20.2	21.0	21.0	21.7	22.6
	12H	28.5	29.2	29.3	30.0	30.9	20.3	21.0	21.1	21.8	22.7
8H	4H	24.8	25.6	25.6	26.3	27.2	21.0	21.7	21.7	22.5	23.4
	6H	27.0	27.6	27.8	28.4	29.3	22.0	22.7	22.8	23.5	24.4
	8H	28.2	28.7	29.0	29.6	30.5	22.5	23.1	23.3	23.9	24.8
	12H	29.6	30.1	30.4	30.9	31.9	22.9	23.4	23.7	24.2	25.2
12H	4H	24.8	25.5	25.6	26.3	27.2	21.5	22.2	22.2	22.9	23.9
	6H	27.1	27.6	27.9	28.4	29.4	22.8	23.4	23.6	24.2	25.1
	8H	28.4	28.9	29.2	29.7	30.7	23.5	24.0	24.3	24.8	25.8
Variations with the observer position at spacings:											
S = 1.0H	+ 0.1 / - 0.1					+ 0.1 / - 0.1					
1.5H	+ 0.2 / - 0.2					+ 0.2 / - 0.3					
2.0H	+ 0.2 / - 0.3					+ 0.2 / - 0.4					

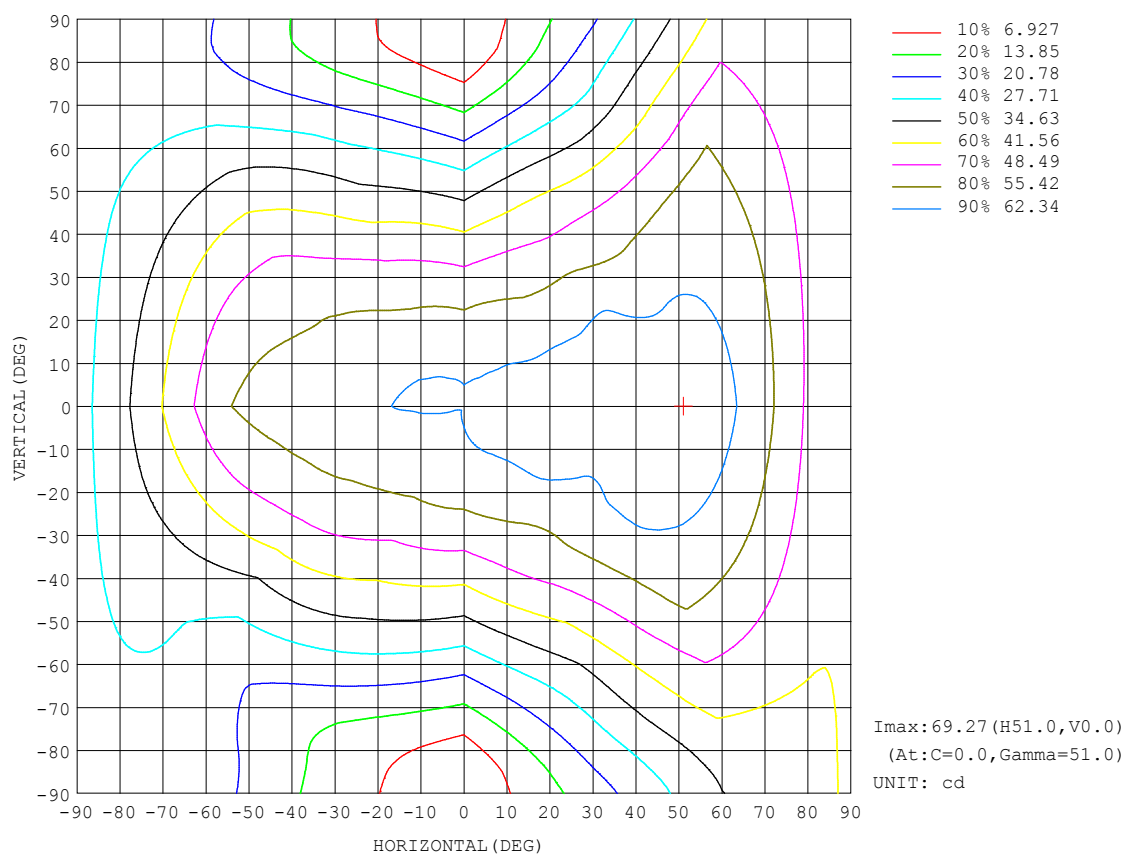
CIE Pub.117 Corrected 340.8 lm Total Lamp Luminous Flux. (8log(F/F0) = -3.7)

C Range: 0 - 360DEG
C Interval: 30.0DEG
Test Speed: HIGH
Temperature:25.3DEG
Operators:LPC
Test Date:2022-01-10

γ Range: 0 - 180DEG
γ Interval: 1.0DEG
Test System:EVERFINE GO-2000B_V1 SYSTEM V2.0.269
Humidity:65.0%
Test Distance:9.200m [K=1.0000]
Remarks:

ISOCANDELA DIAGRAM

Test:U:24.00V I:0.3292A P:7.901W PF:1.000 Lamp Flux:340.832x1 lm		
NAME: SF18-24V-2835-120-2200+5700-80-2200	TYPE: 硅胶	WEIGHT:
DIM.: 16.5*16.5MM	SPEC.:	SERIAL No.:2022011001
MFR.: OLYMPIA	SUR.:1*0.0165	PROTECTION ANGLE:

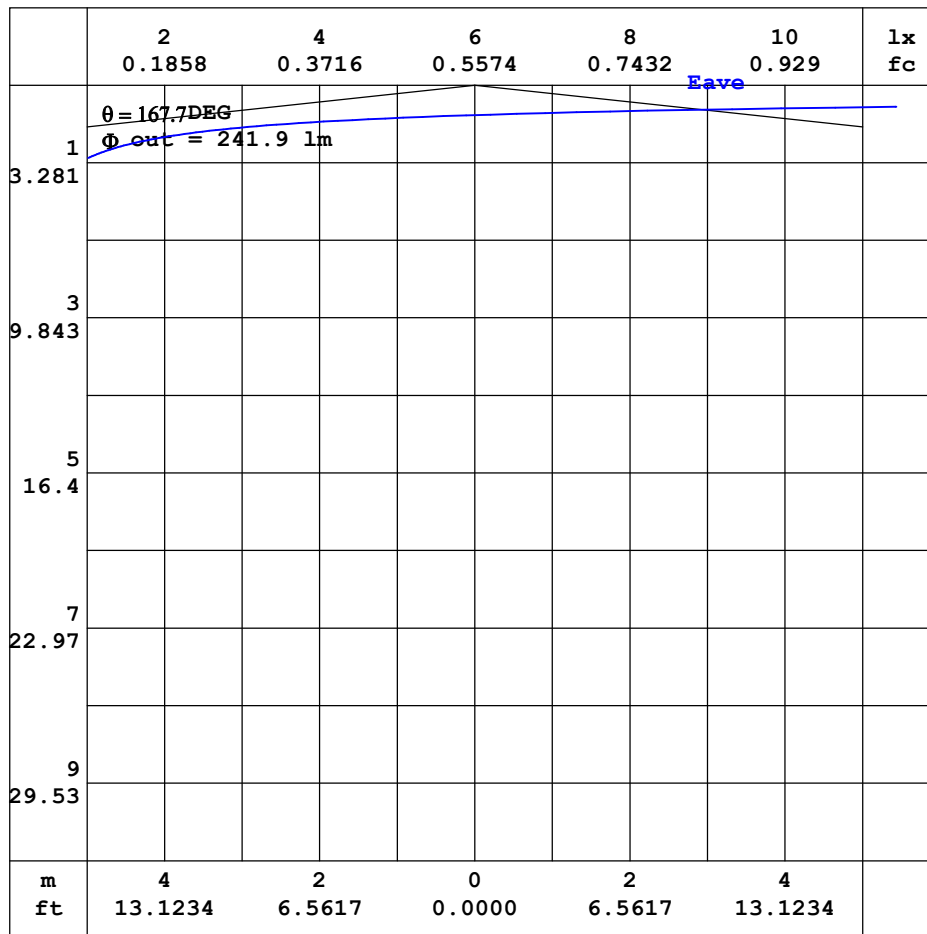


C Range: 0 - 360DEG
C Interval: 30.0DEG
Test Speed: HIGH
Temperature: 25.3DEG
Operators: LPC
Test Date: 2022-01-10

γ Range: 0 - 180DEG
 γ Interval: 1.0DEG
Test System: EVERFINE GO-2000B_V1 SYSTEM V2.0.269
Humidity: 65.0%
Test Distance: 9.200m [K=1.0000]
Remarks:

AAI CURVES

Test:U:24.00V I:0.3292A P:7.901W PF:1.000 Lamp Flux:340.832x1 lm		
NAME: SF18-24V-2835-120-2200+5700-80-2200	TYPE: 硅胶	WEIGHT:
DIM.: 16.5*16.5MM	SPEC.:	SERIAL No.:2022011001
MFR.: OLYMPIA	SUR.:1*0.0165	PROTECTION ANGLE:



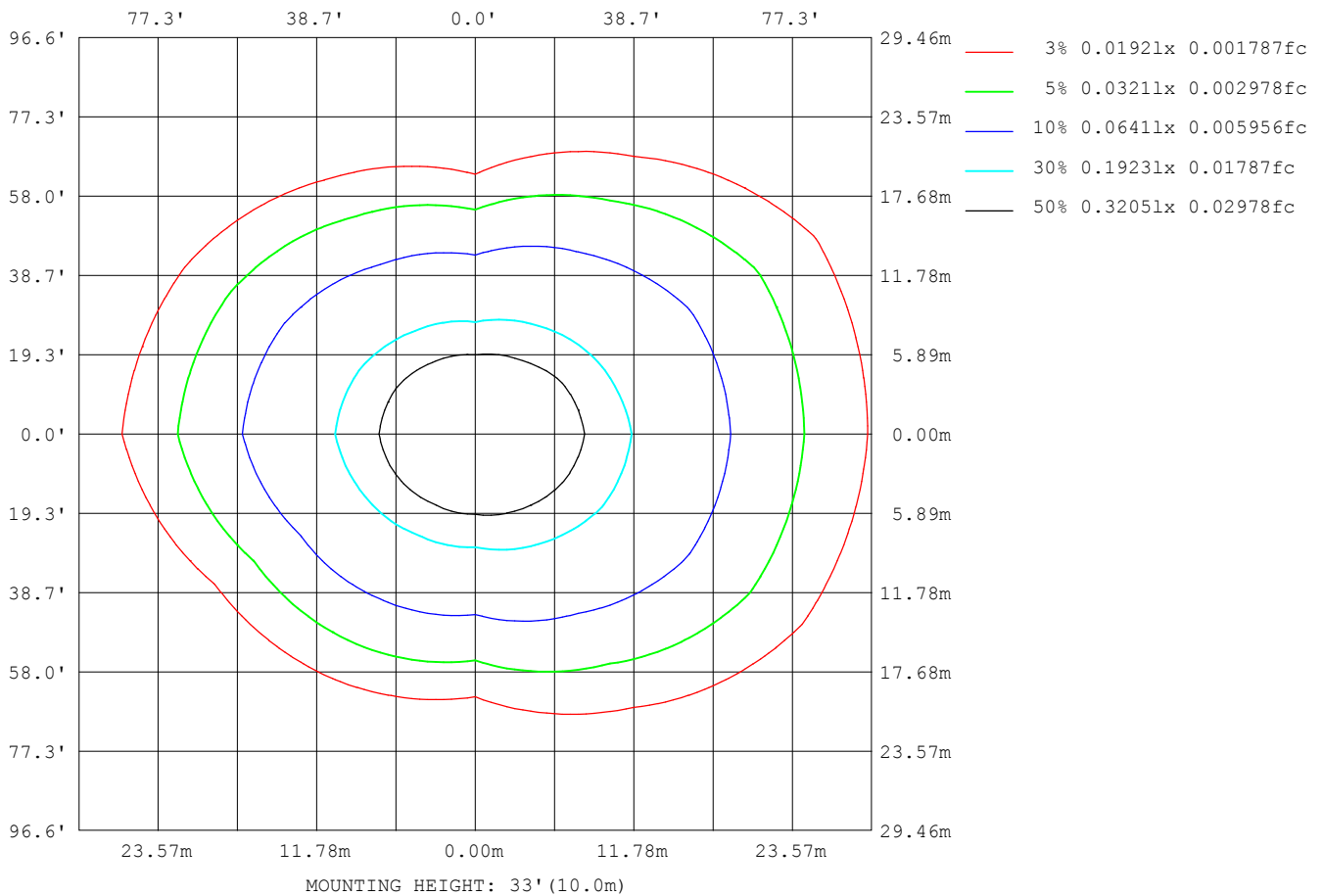
Note: The Curves indicate the illuminated area and the average illumination when the luminaire is at different distance.

C Range: 0 - 360DEG
C Interval: 30.0DEG
Test Speed: HIGH
Temperature: 25.3DEG
Operators: LPC
Test Date: 2022-01-10

γ Range: 0 - 180DEG
γ Interval: 1.0DEG
Test System: EVERFINE GO-2000B_V1 SYSTEM V2.0.269
Humidity: 65.0%
Test Distance: 9.200m [K=1.0000]
Remarks:

ISOLUX DIAGRAM

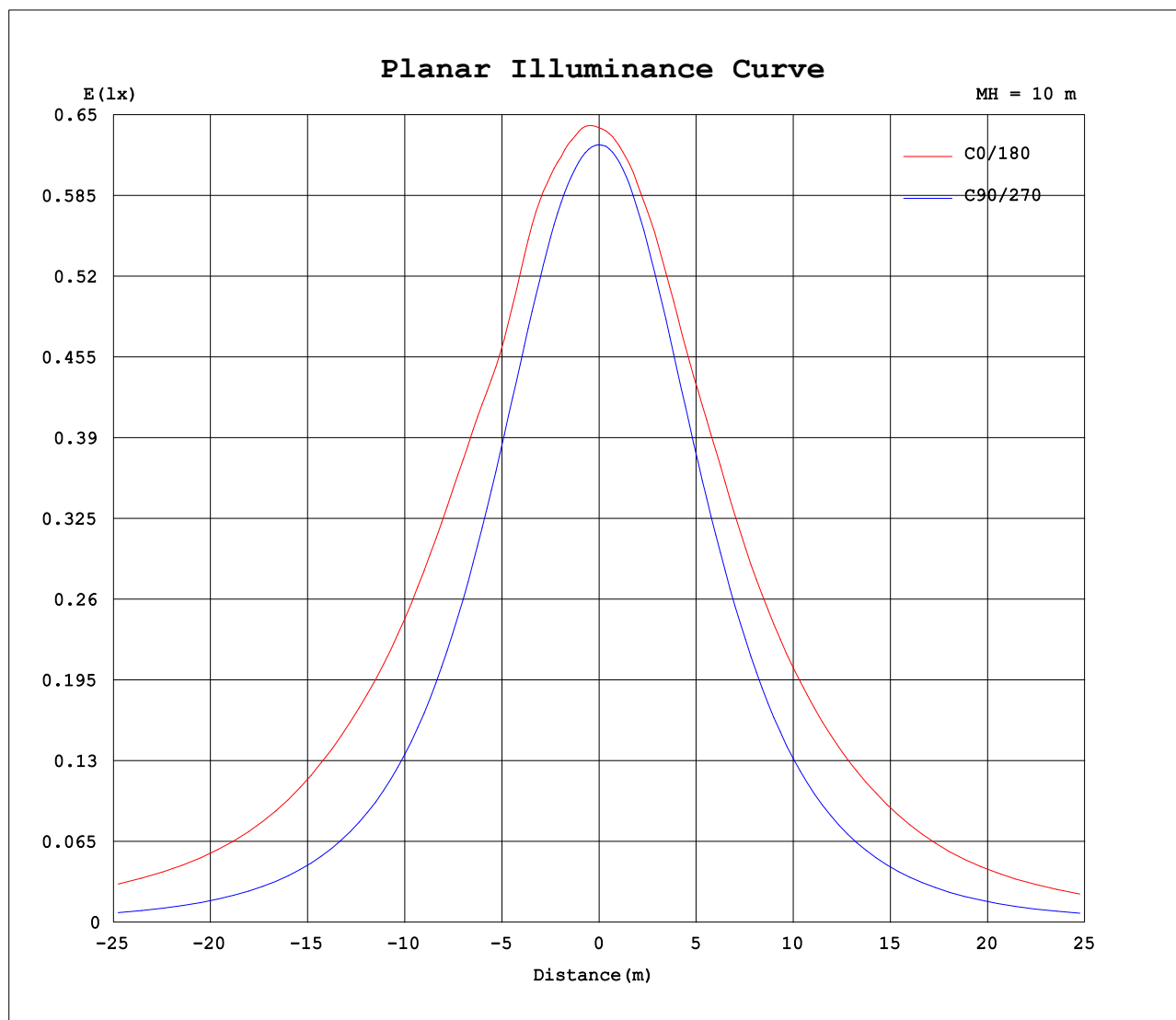
Test:U:24.00V I:0.3292A P:7.901W PF:1.000 Lamp Flux:340.832x1 lm		
NAME: SF18-24V-2835-120-2200+5700-80-2200	TYPE: 硅胶	WEIGHT:
DIM.: 16.5*16.5MM	SPEC.:	SERIAL No.:2022011001
MFR.: OLYMPIA	SUR.:1*0.0165	PROTECTION ANGLE:



C Range: 0 - 360DEG
C Interval: 30.0DEG
Test Speed: HIGH
Temperature:25.3DEG
Operators:LPC
Test Date:2022-01-10

γ Range: 0 - 180DEG
 γ Interval: 1.0DEG
Test System:EVERFINE GO-2000B_V1 SYSTEM V2.0.269
Humidity:65.0%
Test Distance:9.200m [K=1.0000]
Remarks:

Planar Illuminance Curve



C Range: 0 - 360DEG
C Interval: 30.0DEG
Test Speed: HIGH
Temperature: 25.3DEG
Operators: LPC
Test Date: 2022-01-10

γ Range: 0 - 180DEG
 γ Interval: 1.0DEG
Test System: EVERFINE GO-2000B_V1 SYSTEM V2.0.269
Humidity: 65.0%
Test Distance: 9.200m [K=1.0000]
Remarks:

LUMINOUS DISTRIBUTION INTENSITY DATA

Test:U:24.00V I:0.3292A P:7.901W PF:1.000 Lamp Flux:340.832x1 lm		
NAME: SF18-24V-2835-120-2200+5700-80-2200	TYPE: 硅胶	WEIGHT:
DIM.: 16.5*16.5MM	SPEC.:	SERIAL No.:2022011001
MFR.: OLYMPIA	SUR.:1*0.0165	PROTECTION ANGLE:

Table--1

UNIT: cd

C (DEG) γ (DEG)	0	30	60	90	120	150	180	210	240	270	300	330						
0	64.0	63.8	63.3	62.6	62.5	62.6	64.0	63.8	63.3	62.6	62.5	62.6						
5	64.7	64.2	63.4	62.3	61.7	61.6	63.6	63.4	62.8	62.3	62.6	62.9						
10	65.1	64.4	62.9	61.5	60.6	60.5	63.2	62.6	61.8	61.2	62.0	63.3						
15	66.0	64.5	61.8	60.0	58.9	60.1	62.6	61.9	60.2	59.3	60.9	63.1						
20	66.2	64.9	60.1	57.6	57.1	58.8	61.6	60.4	58.1	56.8	59.3	62.7						
25	64.9	64.7	58.2	54.8	54.9	57.3	60.6	58.9	55.8	53.8	57.1	62.7						
30	65.8	62.7	55.9	51.3	51.9	55.9	60.4	57.9	53.0	50.3	54.7	62.3						
35	67.7	61.7	53.6	47.3	48.5	54.2	59.6	56.2	50.1	46.3	52.5	62.6						
40	68.7	62.4	51.8	42.9	44.9	51.8	58.7	54.3	47.0	42.0	50.3	62.1						
45	69.1	62.2	48.9	38.2	41.2	48.4	58.0	52.7	43.1	37.3	47.9	59.9						
50	69.2	61.6	45.0	33.4	37.3	44.0	56.9	50.8	38.9	32.5	45.6	59.0						
55	68.3	60.2	41.1	28.4	33.2	39.2	54.9	47.9	35.0	27.5	42.3	59.3						
60	65.0	58.2	37.1	23.3	28.7	33.7	51.1	44.3	31.2	22.4	38.4	59.3						
65	61.1	55.5	33.2	18.1	23.9	29.0	46.4	40.1	27.1	17.2	34.7	58.5						
70	57.3	51.7	30.0	13.0	18.8	24.9	41.8	35.0	22.6	12.0	31.0	57.0						
75	52.6	47.4	27.0	8.21	14.4	22.6	37.1	29.7	17.8	7.13	27.9	55.2						
80	47.5	42.7	23.8	4.01	11.5	23.2	32.5	25.2	13.3	3.04	25.4	52.3						
85	43.6	37.9	20.6	1.15	10.9	24.0	28.5	21.9	10.3	0.83	22.7	48.5						
90	42.4	34.5	17.6	0.92	10.1	24.1	26.8	21.5	9.84	0.67	20.0	44.4						
95	43.4	33.5	16.1	0.97	9.35	22.9	27.5	22.4	9.49	0.67	17.6	39.6						
100	42.1	31.4	16.2	1.11	8.72	19.9	27.4	21.2	9.12	0.83	16.7	33.3						
105	41.0	33.2	15.0	1.17	7.71	18.5	27.7	21.6	8.05	0.96	16.2	32.1						
110	39.9	33.5	14.4	1.29	7.00	16.6	27.1	20.8	8.19	1.14	16.1	33.2						
115	38.5	32.9	15.9	1.42	5.95	14.9	25.8	19.4	7.83	1.39	16.1	34.8						
120	36.5	30.7	14.7	1.59	4.81	12.8	23.9	17.7	7.02	1.75	16.8	34.3						
125	33.3	28.2	13.1	1.76	3.71	10.7	21.8	16.0	5.96	2.06	16.5	33.4						
130	29.8	23.9	11.6	1.90	2.92	8.57	19.2	14.2	5.05	2.35	15.2	30.9						
135	26.2	18.6	10.2	2.02	2.37	6.79	16.7	12.3	4.18	2.55	13.7	26.4						
140	22.3	14.7	8.77	2.10	2.03	5.34	14.3	9.96	3.56	2.76	12.3	21.9						
145	18.5	11.7	7.44	2.20	1.91	3.58	11.5	8.14	2.81	2.93	10.7	19.2						
150	14.7	8.97	6.19	2.43	2.05	2.33	9.22	6.59	2.17	3.27	9.13	16.1						
155	11.3	6.72	5.91	2.55	1.92	1.93	7.10	5.14	1.83	3.57	8.66	13.0						
160	8.04	4.89	5.45	2.67	1.65	1.93	5.38	3.54	1.75	3.75	8.13	10.2						
165	5.71	3.62	4.93	2.81	1.66	1.93	3.35	2.25	1.65	4.07	7.52	8.14						
170	2.52	2.92	4.36	2.94	1.66	1.65	1.90	1.92	1.63	4.34	6.89	7.27						
175	1.91	2.21	3.65	3.03	1.63	1.63	1.74	1.77	1.60	4.61	6.19	6.22						
180	1.79	1.81	2.65	2.98	5.19	4.67	1.75	1.82	1.91	4.86	4.96	4.66						

C Range: 0 - 360DEG
C Interval: 30.0DEG
Test Speed: HIGH
Temperature:25.3DEG
Operators:LPC
Test Date:2022-01-10

γ Range: 0 - 180DEG
γ Interval: 1.0DEG
Test System:EVERFINE GO-2000B_V1 SYSTEM V2.0.269
Humidity:65.0%
Test Distance:9.200m [K=1.0000]
Remarks:

Photometric Data Table [cd]

G/C	0.0	30.0	60.0	90.0	120.0	150.0	180.0	210.0	240.0	270.0
0.0	63.96	63.84	63.33	62.59	62.48	62.60	63.96	63.84	63.33	62.59
3.0	64.39	64.00	63.36	62.49	62.05	61.95	63.76	63.60	63.15	62.52
6.0	64.70	64.26	63.31	62.20	61.51	61.38	63.52	63.32	62.60	62.19
9.0	65.02	64.44	63.03	61.72	60.86	60.70	63.29	62.87	62.05	61.56
12.0	65.38	64.44	62.53	61.01	59.97	60.32	62.81	62.36	61.24	60.53
15.0	65.98	64.47	61.75	59.98	58.94	60.08	62.61	61.89	60.23	59.33
18.0	66.44	64.71	60.82	58.62	57.88	59.48	62.04	61.04	58.99	57.92
21.0	65.94	65.01	59.77	57.05	56.75	58.59	61.45	60.16	57.60	56.20
24.0	65.12	64.98	58.61	55.38	55.43	57.59	60.77	59.19	56.27	54.48
27.0	64.66	63.94	57.34	53.34	53.80	56.82	60.48	58.38	54.66	52.38
30.0	65.77	62.73	55.86	51.26	51.86	55.95	60.42	57.91	52.97	50.30
33.0	67.10	61.77	54.40	48.92	49.83	55.01	60.04	57.04	51.27	48.00
36.0	68.02	61.74	53.25	46.42	47.75	53.87	59.41	55.81	49.54	45.54
39.0	68.53	62.29	52.23	43.81	45.64	52.38	58.80	54.64	47.63	42.91
42.0	69.04	62.33	50.79	41.05	43.44	50.61	58.48	53.61	45.51	40.16
45.0	69.12	62.25	48.88	38.23	41.21	48.40	57.97	52.70	43.08	37.34
48.0	69.20	62.01	46.60	35.33	38.81	45.79	57.41	51.63	40.54	34.43
51.0	69.27	61.38	44.28	32.37	36.47	43.11	56.55	50.30	38.09	31.45
54.0	68.64	60.47	41.86	29.37	34.05	40.25	55.44	48.54	35.76	28.50
57.0	67.11	59.44	39.53	26.38	31.39	36.91	53.60	46.52	33.50	25.49
60.0	64.97	58.19	37.14	23.28	28.68	33.71	51.10	44.30	31.20	22.41
63.0	62.70	56.78	34.79	20.18	25.83	30.78	48.26	41.84	28.80	19.34
66.0	60.46	54.75	32.53	17.10	22.86	28.12	45.49	39.16	26.19	16.17
69.0	58.16	52.47	30.59	14.05	19.87	25.60	42.75	36.11	23.53	13.09
72.0	55.52	49.86	28.88	11.04	16.90	23.62	39.85	32.79	20.63	10.05
75.0	52.57	47.38	27.03	8.210	14.37	22.55	37.15	29.72	17.76	7.135
78.0	49.48	44.73	25.10	5.557	12.38	22.88	34.36	26.90	14.99	4.525
81.0	46.60	41.66	23.17	3.306	11.29	23.30	31.66	24.39	12.57	2.372
84.0	44.27	38.77	21.21	1.564	10.95	23.84	29.18	22.39	10.71	0.9370
87.0	42.71	36.28	19.35	0.9597	10.55	24.24	27.46	21.21	9.941	0.7090
90.0	42.35	34.46	17.60	0.9248	10.09	24.10	26.80	21.48	9.845	0.6684
93.0	42.83	33.44	16.37	0.9450	9.646	23.52	27.29	21.98	9.623	0.6734
96.0	43.46	33.69	16.11	0.9801	9.254	22.64	27.54	22.76	9.432	0.6784
99.0	42.27	30.81	16.23	1.051	8.837	20.22	27.25	20.88	9.206	0.7785
102.0	41.67	32.61	15.13	1.136	8.225	19.31	27.63	21.58	8.424	0.8894
105.0	41.02	33.22	14.98	1.171	7.710	18.46	27.74	21.61	8.052	0.9598
108.0	40.42	33.52	15.23	1.242	7.304	17.39	27.44	21.18	8.192	1.065
111.0	39.63	33.42	14.87	1.307	6.827	16.30	26.90	20.55	8.161	1.176
114.0	38.81	33.11	15.32	1.392	6.174	15.27	26.08	19.74	7.939	1.326
117.0	37.79	32.34	15.72	1.488	5.501	14.03	25.10	18.78	7.542	1.512
120.0	36.52	30.75	14.69	1.593	4.807	12.82	23.95	17.75	7.019	1.748
123.0	34.63	29.17	13.81	1.684	4.129	11.56	22.70	16.67	6.435	1.944
126.0	32.67	27.72	12.83	1.789	3.495	10.22	21.31	15.68	5.797	2.130
129.0	30.54	24.92	11.91	1.865	3.027	8.977	19.72	14.59	5.210	2.286
132.0	28.34	21.27	11.04	1.950	2.700	7.843	18.18	13.43	4.697	2.437
135.0	26.19	18.60	10.22	2.015	2.368	6.787	16.74	12.30	4.180	2.548
138.0	23.86	16.20	9.341	2.076	2.131	5.938	15.29	10.93	3.778	2.678
141.0	21.57	14.05	8.532	2.116	1.991	4.971	13.82	9.558	3.410	2.779
144.0	19.27	12.21	7.698	2.181	1.945	3.863	12.01	8.482	2.944	2.884
147.0	16.96	10.60	6.923	2.292	1.885	3.028	10.65	7.491	2.567	3.040
150.0	14.72	8.971	6.194	2.428	2.050	2.326	9.222	6.586	2.175	3.271
153.0	12.59	7.520	5.971	2.493	2.095	2.040	7.900	5.892	1.874	3.457
156.0	10.65	6.324	5.846	2.573	1.835	1.874	6.761	4.778	1.824	3.598
159.0	8.556	5.214	5.550	2.644	1.654	1.845	5.765	3.867	1.784	3.699
162.0	7.127	4.265	5.258	2.729	1.658	2.096	4.639	2.883	1.728	3.889
165.0	5.715	3.623	4.932	2.815	1.658	1.934	3.353	2.253	1.648	4.065
168.0	2.863	3.250	4.635	2.895	1.658	1.653	2.060	2.031	1.628	4.216
171.0	2.369	2.793	4.203	2.970	1.658	1.648	1.824	1.885	1.628	4.392
174.0	1.961	2.361	3.791	3.026	1.629	1.633	1.739	1.810	1.598	4.553
177.0	1.865	2.065	3.394	3.031	3.220	1.638	1.739	1.719	1.599	4.694
180.0	1.794	1.814	2.649	2.980	5.187	4.674	1.749	1.819	1.910	4.865
G/C	300.0	330.0								
0.0	62.48	62.60								
3.0	62.64	62.86								
6.0	62.51	62.98								
9.0	62.18	63.28								
12.0	61.57	63.28								
15.0	60.94	63.13								
18.0	60.03	62.80								
21.0	58.90	62.68								
24.0	57.60	62.68								
27.0	56.18	62.51								
30.0	54.72	62.32								

C Range: 0 - 360DEG
 C Interval: 30.0DEG
 Test Speed: HIGH
 Temperature: 25.3DEG
 Operators: LPC
 Test Date: 2022-01-10

γ Range: 0 - 180DEG
 γ Interval: 1.0DEG
 Test System: EVERFINE GO-2000B_V1 SYSTEM V2.0.269
 Humidity: 65.0%
 Test Distance: 9.200m [K=1.0000]
 Remarks:

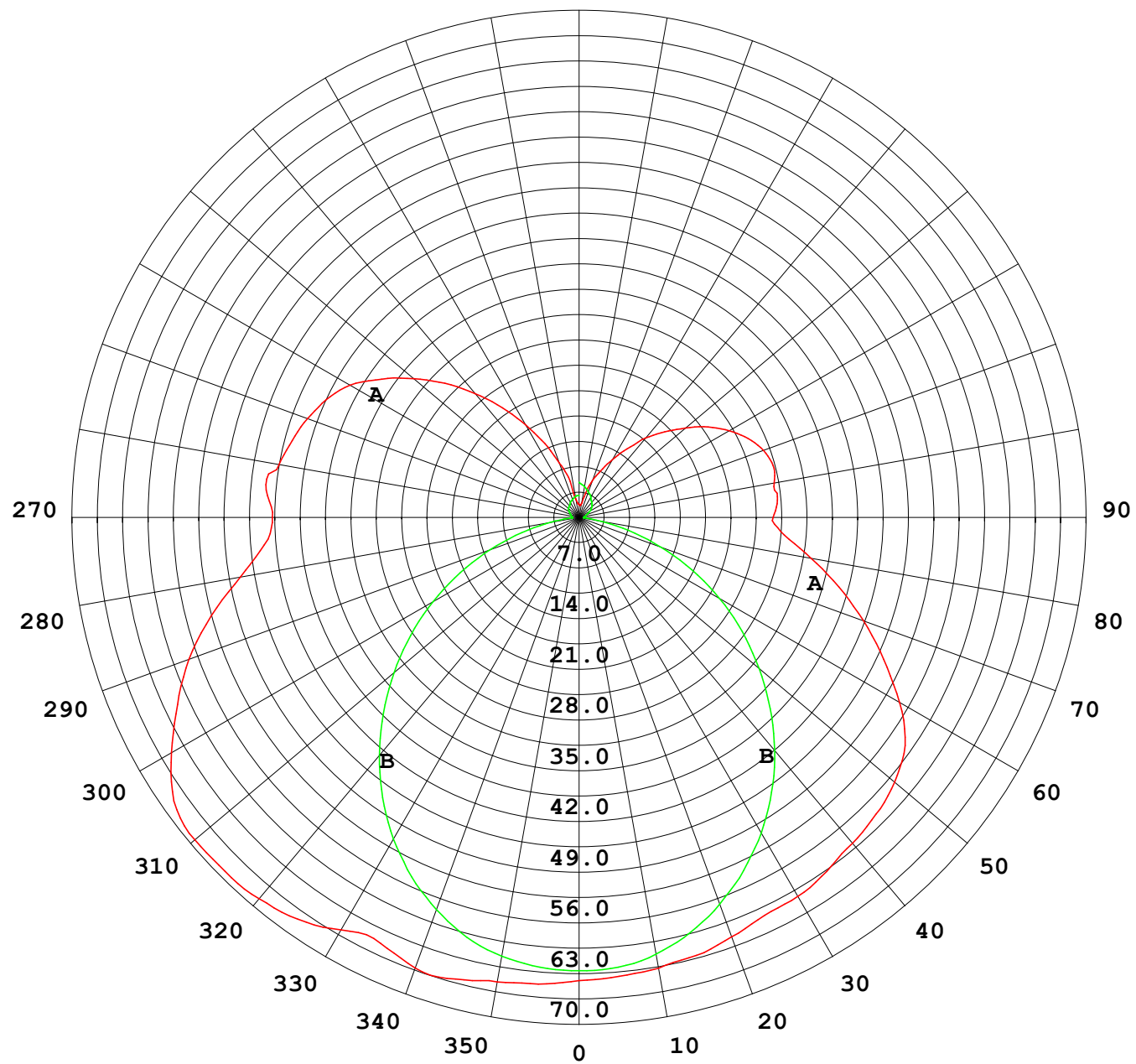
Photometric Data Table [cd]

33.0	53.36	62.38
36.0	52.10	62.69
39.0	50.76	62.47
42.0	49.20	61.15
45.0	47.87	59.90
48.0	46.64	59.08
51.0	45.03	59.05
54.0	42.99	59.31
57.0	40.83	59.32
60.0	38.43	59.27
63.0	36.15	58.93
66.0	33.96	58.20
69.0	31.71	57.33
72.0	29.62	56.22
75.0	27.90	55.16
78.0	26.37	53.57
81.0	24.86	51.57
84.0	23.23	49.23
87.0	21.63	46.88
90.0	19.99	44.44
93.0	18.49	41.51
96.0	17.18	38.73
99.0	16.68	33.68
102.0	16.13	32.76
105.0	16.21	32.11
108.0	16.12	32.52
111.0	16.10	33.53
114.0	15.68	34.59
117.0	16.28	34.88
120.0	16.77	34.34
123.0	16.64	33.79
126.0	16.34	33.30
129.0	15.46	31.68
132.0	14.62	29.18
135.0	13.71	26.36
138.0	12.87	23.28
141.0	11.97	21.00
144.0	11.03	19.55
147.0	10.06	18.10
150.0	9.129	16.05
153.0	8.754	14.33
156.0	8.522	12.37
159.0	8.226	10.71
162.0	7.874	9.212
165.0	7.522	8.143
168.0	7.145	7.756
171.0	6.783	7.073
174.0	6.321	6.450
177.0	5.899	5.767
180.0	4.960	4.664

C Range: 0 - 360DEG
C Interval: 30.0DEG
Test Speed: HIGH
Temperature:25.3DEG
Operators:LPC
Test Date:2022-01-10

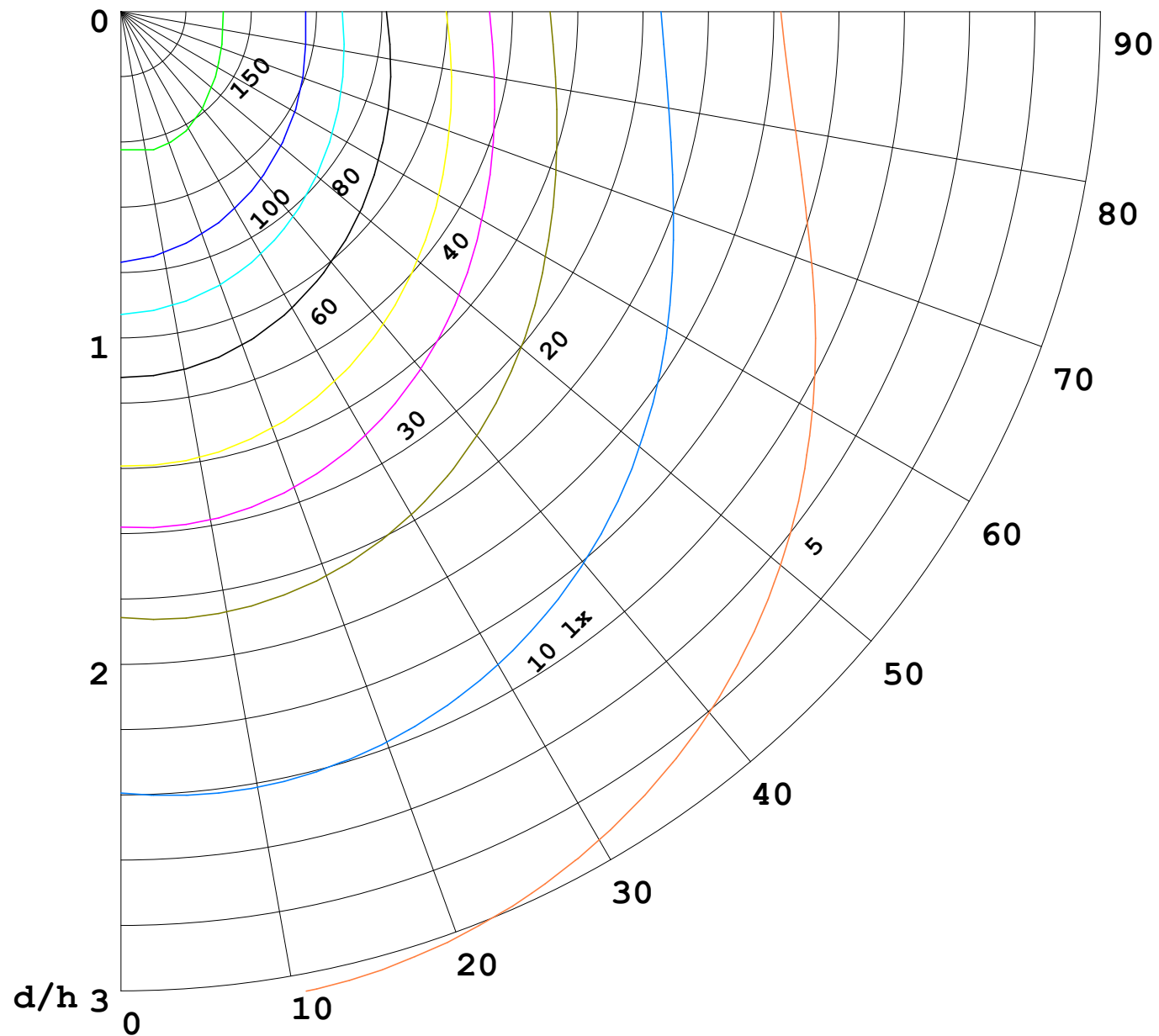
γ Range: 0 - 180DEG
γ Interval: 1.0DEG
Test System:EVERFINE GO-2000B_V1 SYSTEM V2.0.269
Humidity:65.0%
Test Distance:9.200m [K=1.0000]
Remarks:

I (cd)



1000 lm

$\kappa = 1$



F = 5000 lm
 K = 0.7
 Hcc = 0.0 m
 Hfc = 0.0 m
 Eave = 100 lx

	Pcc	Pw	Pfc
—	70	50	30
—	50	30	20

