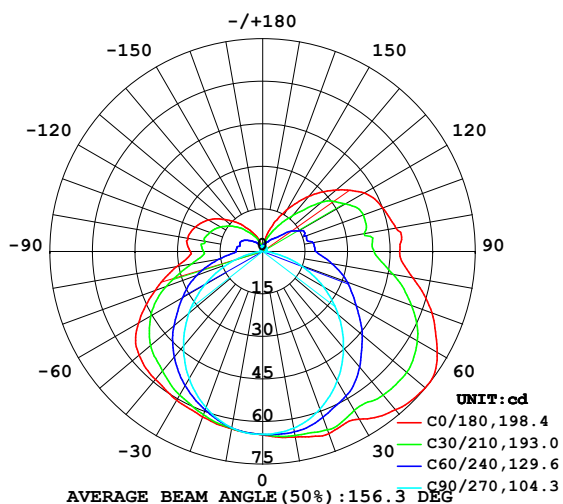


LUMINAIRE PHOTOMETRIC TEST REPORT

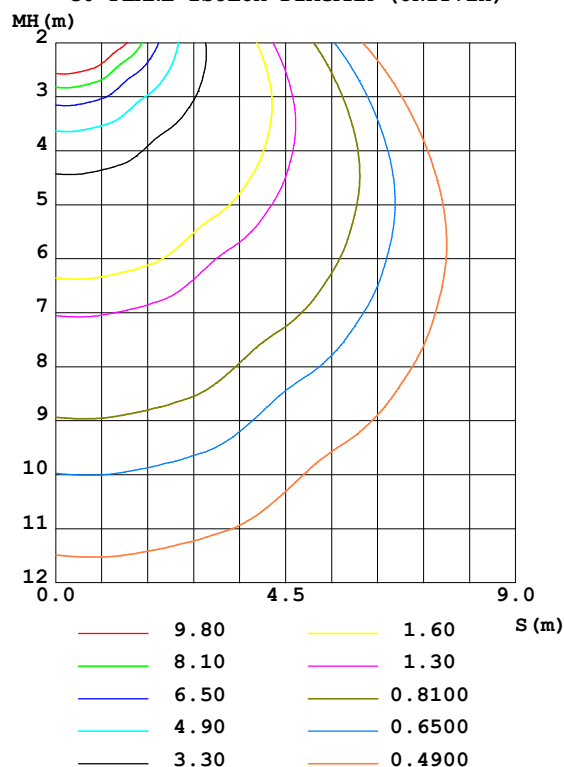
Test:U:24.00V I:0.3336A P:8.006W PF:1.000 Freq:0Hz Lamp Flux:363.922x1 lm		
NAME: SF18-24V-2835-120-3000+5700-80-5700	TYPE: 硅胶	WEIGHT:
SPEC.:	DIM.: 16.5mm*16.5mm	SERIAL No.:2022011105
MFR.: OLYMPIA	SUR.:1*0.0165	Shielding Angle:

DATA OF LAMP		PHOTOMETRIC DATA Eff: 45.45 lm/W			
MODEL	2835	I _{max} (cd)	74.87	S/MH (C0/180)	1.42
NOMINAL POWER (W)	7.5	LOR (%)	100.0	S/MH (C90/270)	1.20
RATED VOLTAGE (V)	24	TOTAL FLUX (lm)	363.92	η UP, DN (C0-180)	14.3, 38.4
NOMINAL FLUX (lm)	363.922	CIE CLASS	SEMI-D.	η UP, DN (C180-360)	11.7, 35.6
LAMPS INSIDE	1	η up (%)	26.0	CIBSE SHR NOM	1.50
TEST VOLTAGE (V)	24.0	η down (%)	74.0	CIBSE SHR MAX	1.55

LUMINOUS INTENSITY DISTRIBUTION DIAGRAM



C0 PLANE ISOLUX DIAGRAM (UNIT:lx)



C Range: 0 - 360DEG
C Interval: 30.0DEG
Test Speed: HIGH
Temperature: 25.3DEG
Operators: LPC
Test Date: 2022-01-11

γ Range: 0 - 180DEG
γ Interval: 1.0DEG
Test System: EVERFINE GO-2000B_V1 SYSTEM V2.0.269
Humidity: 65.0%
Test Distance: 9.200m [K=1.0000]
Remarks:

ZONAL FLUX DIAGRAM

ZONAL FLUX DIAGRAM:

γ	C0	C45	C90	C135	C180	C225	C270	C315	γ	Φ zone	Φ total	%lum, lamp
10	66.44	65.23	63.26	63.31	63.47	63.30	63.15	65.25	0- 10	6.155	6.155	1.69,1.69
20	68.38	64.56	59.12	60.56	62.06	60.35	58.53	64.17	10- 20	17.93	24.09	6.62,6.62
30	68.26	61.78	52.65	56.83	60.63	56.60	51.79	61.34	20- 30	28.00	52.09	14.3,14.3
40	72.87	59.68	44.38	51.84	58.89	51.77	43.45	59.24	30- 40	35.90	87.98	24.2,24.2
50	74.83	56.08	34.85	46.17	56.88	46.28	34.02	55.88	40- 50	41.16	129.1	35.5,35.5
60	71.06	50.53	24.56	39.06	50.56	39.17	23.61	50.30	50- 60	42.62	171.8	47.2,47.2
70	63.56	43.83	14.05	30.26	40.38	30.56	12.98	43.67	60- 70	39.60	211.4	58.1,58.1
80	53.76	35.71	4.597	20.48	30.76	20.50	3.544	35.64	70- 80	32.78	244.1	67.1,67.1
90	48.36	29.04	0.9801	15.67	25.59	15.17	0.7463	28.52	80- 90	25.07	269.2	74,74
100	47.74	27.23	1.156	15.38	26.81	14.99	0.8288	26.66	90-100	22.90	292.1	80.3,80.3
110	45.12	27.02	1.266	14.42	25.32	14.19	0.9074	26.43	100-110	21.22	313.3	86.1,86.1
120	41.35	24.12	1.432	12.74	22.25	12.57	1.075	22.72	110-120	18.77	332.1	91.3,91.3
130	33.74	18.26	1.548	10.02	17.59	10.00	1.256	17.91	120-130	14.23	346.3	95.2,95.2
140	25.44	11.38	1.754	7.304	12.95	7.249	1.483	11.01	130-140	9.104	355.4	97.7,97.7
150	16.81	7.065	1.938	4.814	8.309	4.863	1.679	6.906	140-150	5.017	360.5	99,99
160	9.336	4.404	1.961	2.896	4.831	2.903	1.799	4.310	150-160	2.389	362.8	99.7,99.7
170	2.988	2.772	1.975	1.890	1.874	1.892	1.893	2.757	160-170	0.8802	363.7	99.9,99.9
180	1.925	2.020	1.975	1.980	1.844	1.963	1.970	2.003	170-180	0.1997	363.9	100,100
DEG	LUMINOUS INTENSITY:cd									UNIT:lm		

Conical surface Flux(90deg): 108.11 lm

%lum = 29.7%

%lamp = 29.7%

Conical surface Flux(120deg): 171.76 lm

%lum = 47.2%

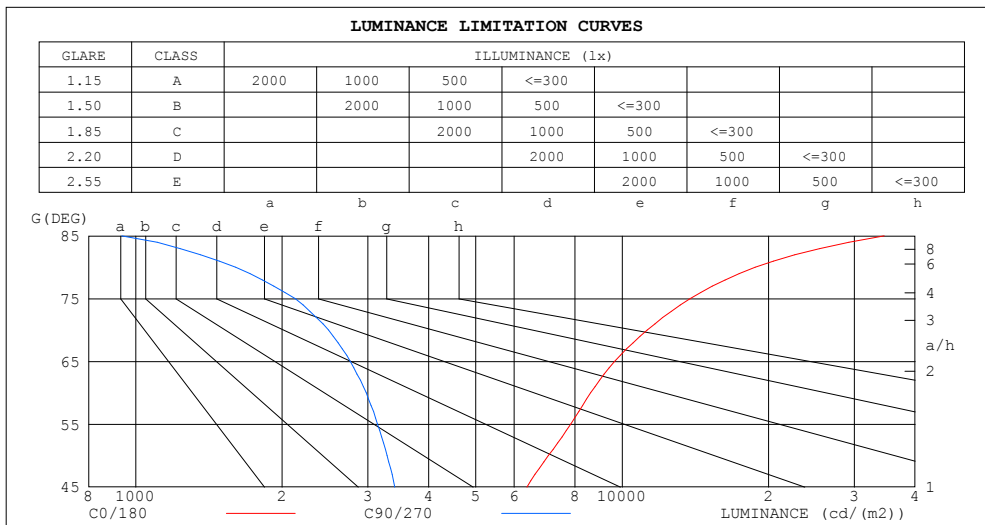
%lamp = 47.2%

C Range: 0 - 360DEG
 C Interval: 30.0DEG
 Test Speed: HIGH
 Temperature:25.3DEG
 Operators:LPC
 Test Date:2022-01-11

γ Range: 0 - 180DEG
 γ Interval: 1.0DEG
 Test System:EVERFINE GO-2000B_V1 SYSTEM V2.0.269
 Humidity:65.0%
 Test Distance:9.200m [K=1.0000]
 Remarks:

LUMINANCE LIMITATION CURVES

Test:U:24.00V I:0.3336A P:8.006W PF:1.000 Freq:0Hz Lamp Flux:363.922x1 lm		
NAME: SF18-24V-2835-120-3000+5700-80-5700	TYPE: 硅胶	WEIGHT:
SPEC.:	DIM.: 16.5mm*16.5mm	SERIAL No.:2022011105
MFR.: OLYMPIA	SUR.:1*0.0165	Shielding Angle:



LUMINANCE cd/(m2)		
G (DEG)	C0/180	C90/270
85	34573	935
80	18762	1604
75	13801	2127
70	11264	2490
65	9644	2762
60	8613	2976
55	7838	3142
50	7056	3286
45	6369	3408

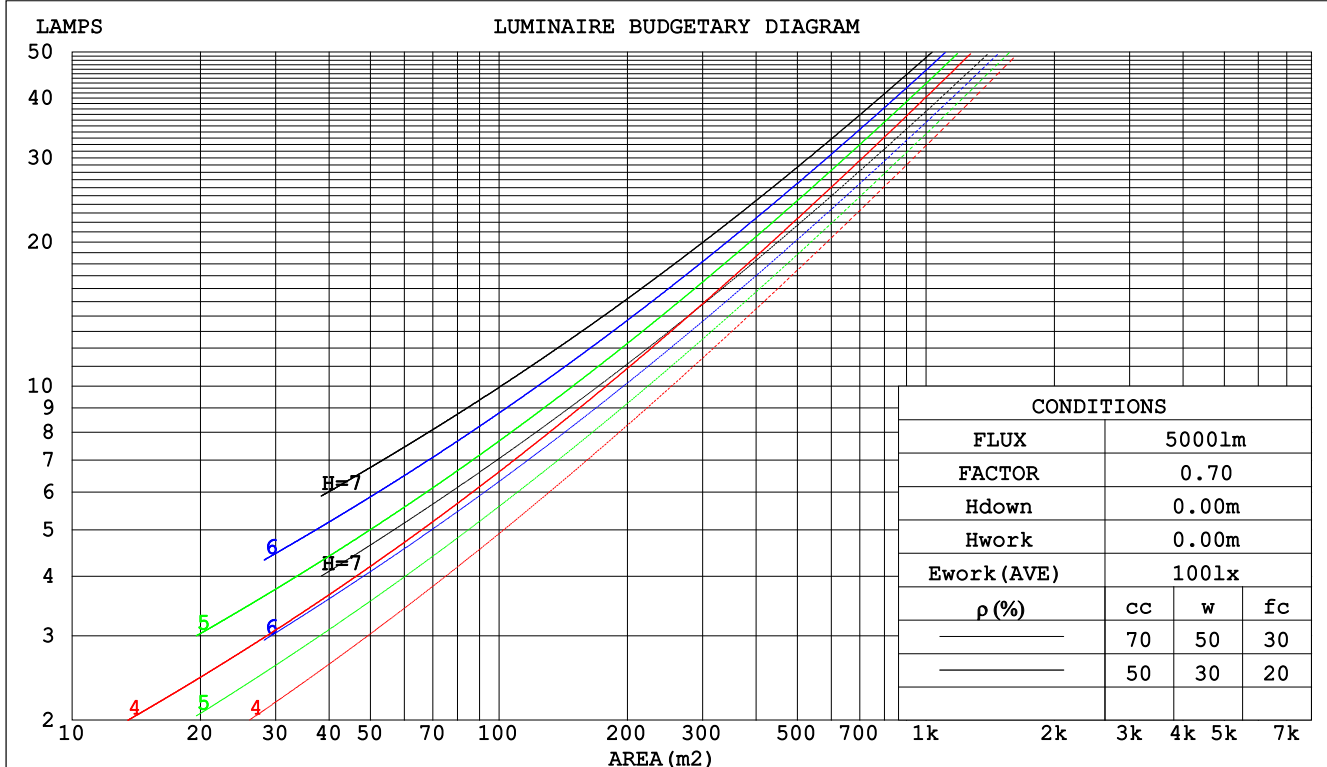
C Range: 0 - 360DEG
C Interval: 30.0DEG
Test Speed: HIGH
Temperature:25.3DEG
Operators:LPC
Test Date:2022-01-11

γ Range: 0 - 180DEG
 γ Interval: 1.0DEG
Test System:EVERFINE GO-2000B_V1 SYSTEM V2.0.269
Humidity:65.0%
Test Distance:9.200m [K=1.0000]
Remarks:

CU AND LUMINAIRE BUDGETARY ESTIMATE DIAGRAM

Test:U:24.00V I:0.3336A P:8.006W PF:1.000 Freq:0Hz Lamp Flux:363.922x1 lm		
NAME: SF18-24V-2835-120-3000+5700-80-5700	TYPE: 硅胶	WEIGHT:
SPEC.:	DIM.: 16.5mm*16.5mm	SERIAL No.:2022011105
MFR.: OLYMPIA	SUR.:1*0.0165	Shielding Angle:

pcc	80%			70%			50%			30%			10%			0
pw	50%	30%	10%	50%	30%	10%	50%	30%	10%	50%	30%	10%	50%	30%	10%	0
pfc	20%			20%			20%			20%			20%			0
RCR	RCR:Room Cavity Ratio						Coefficients of Utilization(CU)									
0.0	1.13	1.13	1.13	1.07	1.07	1.07	.97	.97	.97	.87	.87	.87	.78	.78	.78	.74
1.0	.94	.89	.84	.89	.84	.80	.80	.76	.73	.72	.69	.66	.64	.62	.60	.56
2.0	.80	.72	.66	.76	.69	.63	.68	.63	.58	.61	.57	.53	.54	.51	.48	.44
3.0	.69	.61	.53	.66	.58	.51	.59	.52	.47	.53	.47	.43	.47	.43	.39	.36
4.0	.61	.51	.44	.58	.49	.43	.52	.45	.39	.46	.41	.36	.41	.37	.33	.30
5.0	.54	.44	.37	.51	.43	.36	.46	.39	.33	.41	.35	.31	.37	.32	.28	.25
6.0	.48	.39	.32	.46	.37	.31	.41	.34	.29	.37	.31	.26	.33	.28	.24	.21
7.0	.43	.34	.28	.41	.33	.27	.37	.30	.25	.34	.28	.23	.30	.25	.21	.19
8.0	.39	.31	.25	.37	.29	.24	.34	.27	.22	.31	.25	.20	.28	.23	.19	.17
9.0	.36	.27	.22	.34	.26	.21	.31	.24	.20	.28	.22	.18	.25	.20	.17	.15
10.0	.33	.25	.20	.31	.24	.19	.29	.22	.18	.26	.20	.16	.24	.19	.15	.13



C Range: 0 - 360DEG
C Interval: 30.0DEG
Test Speed: HIGH
Temperature:25.3DEG
Operators:LPC
Test Date:2022-01-11

γ Range: 0 - 180DEG
γ Interval: 1.0DEG
Test System:EVERFINE GO-2000B_V1 SYSTEM V2.0.269
Humidity:65.0%
Test Distance:9.200m [K=1.0000]
Remarks:

WEC AND CCEC

Test:U:24.00V I:0.3336A P:8.006W PF:1.000 Freq:0Hz Lamp Flux:363.922x1 lm		
NAME: SF18-24V-2835-120-3000+5700-80-5700	TYPE: 硅胶	WEIGHT:
SPEC.:	DIM.: 16.5mm*16.5mm	SERIAL No.:2022011105
MFR.: OLYMPIA	SUR.:1*0.0165	Shielding Angle:

pcc	80%			70%			50%			30%			10%			0	
pw	50%	30%	10%	50%	30%	10%	50%	30%	10%	50%	30%	10%	50%	30%	10%	0	
pfc	20%			20%			20%			20%			20%			0	
RCR	RCR:Room Cavity Ratio						Wall Exitance Coefficients(WEC)										
0.0																	
1.0	.379	.216	.068	.364	.208	.066	.336	.193	.061	.310	.179	.057	.286	.166	.053		
2.0	.329	.180	.055	.316	.174	.054	.290	.161	.050	.266	.149	.047	.244	.138	.044		
3.0	.293	.156	.047	.281	.150	.045	.257	.139	.042	.236	.129	.040	.216	.119	.037		
4.0	.264	.137	.040	.253	.132	.039	.231	.123	.037	.212	.114	.034	.193	.105	.032		
5.0	.240	.122	.035	.230	.118	.034	.210	.110	.032	.192	.101	.030	.175	.094	.028		
6.0	.220	.110	.032	.211	.106	.031	.193	.099	.029	.176	.092	.027	.161	.085	.025		
7.0	.203	.100	.028	.194	.097	.028	.178	.090	.026	.163	.083	.024	.148	.077	.023		
8.0	.188	.092	.026	.180	.089	.025	.165	.083	.024	.151	.077	.022	.138	.071	.021		
9.0	.175	.085	.024	.168	.082	.023	.154	.076	.022	.141	.071	.020	.129	.065	.019		
10.0	.164	.079	.022	.157	.076	.021	.144	.071	.020	.132	.066	.019	.121	.061	.017		

pcc	80%			70%			50%			30%			10%			0	
pw	50%	30%	10%	50%	30%	10%	50%	30%	10%	50%	30%	10%	50%	30%	10%	0	
pfc	20%			20%			20%			20%			20%			0	
RCR	RCR:Room Cavity Ratio						Ceiling Cavity Exitance Coefficients(CCEC)										
0.0	.389	.389	.389	.332	.332	.332	.227	.227	.227	.130	.130	.130	.042	.042	.042		
1.0	.385	.355	.329	.329	.305	.283	.225	.210	.196	.130	.121	.114	.042	.039	.037		
2.0	.379	.333	.295	.324	.287	.255	.222	.198	.178	.128	.115	.104	.041	.037	.034		
3.0	.371	.317	.273	.318	.273	.237	.219	.190	.166	.126	.111	.098	.041	.036	.032		
4.0	.364	.305	.259	.312	.263	.225	.215	.183	.159	.124	.107	.094	.040	.035	.031		
5.0	.356	.295	.250	.306	.255	.217	.211	.178	.153	.122	.105	.091	.039	.034	.030		
6.0	.349	.287	.243	.300	.249	.211	.207	.174	.150	.120	.102	.089	.039	.033	.029		
7.0	.342	.281	.238	.294	.243	.207	.203	.171	.147	.118	.101	.087	.038	.033	.029		
8.0	.335	.275	.234	.289	.239	.204	.200	.168	.145	.116	.099	.086	.038	.032	.029		
9.0	.329	.271	.231	.284	.235	.201	.197	.165	.143	.114	.097	.085	.037	.032	.028		
10.0	.324	.266	.228	.279	.231	.199	.193	.163	.142	.113	.096	.085	.037	.032	.028		

C Range: 0 - 360DEG
 C Interval: 30.0DEG
 Test Speed: HIGH
 Temperature:25.3DEG
 Operators:LPC
 Test Date:2022-01-11

γ Range: 0 - 180DEG
 γ Interval: 1.0DEG
 Test System:EVERFINE GO-2000B_V1 SYSTEM V2.0.269
 Humidity:65.0%
 Test Distance:9.200m [K=1.0000]
 Remarks:

UGR(Unified Glare Rating) Table

Test:U:24.00V I:0.3336A P:8.006W PF:1.000 Freq:0Hz Lamp Flux:363.922x1 lm										
NAME: SF18-24V-2835-120-3000+5700-80-5700					TYPE: 硅胶			WEIGHT:		
SPEC.:					DIM.: 16.5mm*16.5mm			SERIAL No.:2022011105		
MFR.: OLYMPIA					SUR.:1*0.0165			Shielding Angle:		
ceiling/cavity	0.7	0.7	0.5	0.5	0.3	0.7	0.7	0.5	0.5	0.3
walls	0.5	0.3	0.5	0.3	0.3	0.5	0.3	0.5	0.3	0.3
working plane	0.2	0.2	0.2	0.2	0.2	0.2	0.2	0.2	0.2	0.2
Room dimensions	Viewed crosswise					Viewed endwise				
x = 2H y = 2H	23.1	24.4	23.7	25.0	25.8	18.9	20.2	19.5	20.8	21.5
3H	26.0	27.2	26.7	27.9	28.6	20.3	21.5	21.0	22.2	22.9
4H	27.6	28.7	28.2	29.4	30.1	20.9	22.0	21.6	22.7	23.5
6H	29.2	30.3	29.9	31.0	31.8	21.3	22.3	21.9	23.0	23.8
8H	30.2	31.2	30.8	31.9	32.7	21.4	22.4	22.0	23.1	23.9
12H	31.2	32.2	31.9	32.9	33.7	21.4	22.4	22.1	23.1	23.9
4H 2H	23.6	24.7	24.2	25.4	26.1	20.7	21.8	21.3	22.5	23.2
3H	26.8	27.7	27.5	28.4	29.3	22.4	23.4	23.1	24.1	24.9
4H	28.5	29.4	29.2	30.1	31.0	23.2	24.1	23.9	24.8	25.7
6H	30.4	31.2	31.1	32.0	32.8	23.8	24.6	24.5	25.3	26.2
8H	31.4	32.2	32.2	32.9	33.9	24.0	24.7	24.7	25.5	26.4
12H	32.6	33.3	33.4	34.1	35.0	24.1	24.8	24.9	25.6	26.5
8H 4H	28.8	29.6	29.6	30.3	31.2	24.8	25.5	25.5	26.3	27.2
6H	31.0	31.6	31.8	32.4	33.4	25.8	26.5	26.6	27.2	28.2
8H	32.3	32.8	33.1	33.6	34.6	26.3	26.8	27.1	27.6	28.6
12H	33.7	34.2	34.5	35.0	36.0	26.6	27.1	27.4	27.9	28.9
12H 4H	28.8	29.5	29.6	30.3	31.2	25.3	26.0	26.1	26.8	27.7
6H	31.1	31.7	31.9	32.5	33.4	26.6	27.2	27.4	28.0	29.0
8H	32.5	33.0	33.3	33.8	34.8	27.3	27.8	28.1	28.6	29.6
Variations with the observer position at spacings:										
S = 1.0H	+ 0.1 / - 0.1					+ 0.1 / - 0.1				
1.5H	+ 0.2 / - 0.2					+ 0.2 / - 0.3				
2.0H	+ 0.2 / - 0.3					+ 0.2 / - 0.4				

CIE Pub.117, 363.9 lm Total Lamp Luminous Flux Correct (8log(F/F0) = -3.5)

C Range: 0 - 360DEG
 C Interval: 30.0DEG
 Test Speed: HIGH
 Temperature:25.3DEG
 Operators:LPC
 Test Date:2022-01-11

γ Range: 0 - 180DEG
 γ Interval: 1.0DEG
 Test System:EVERFINE GO-2000B_V1 SYSTEM V2.0.269
 Humidity:65.0%
 Test Distance:9.200m [K=1.0000]
 Remarks:

UTILIZATION FACTORS TABLE

Test:U:24.00V I:0.3336A P:8.006W PF:1.000 Freq:0Hz Lamp Flux:363.922x1 lm		
NAME: SF18-24V-2835-120-3000+5700-80-5700	TYPE: 硅胶	WEIGHT:
SPEC.:	DIM.: 16.5mm*16.5mm	SERIAL No.:2022011105
MFR.: OLYMPIA	SUR.:1*0.0165	Shielding Angle:

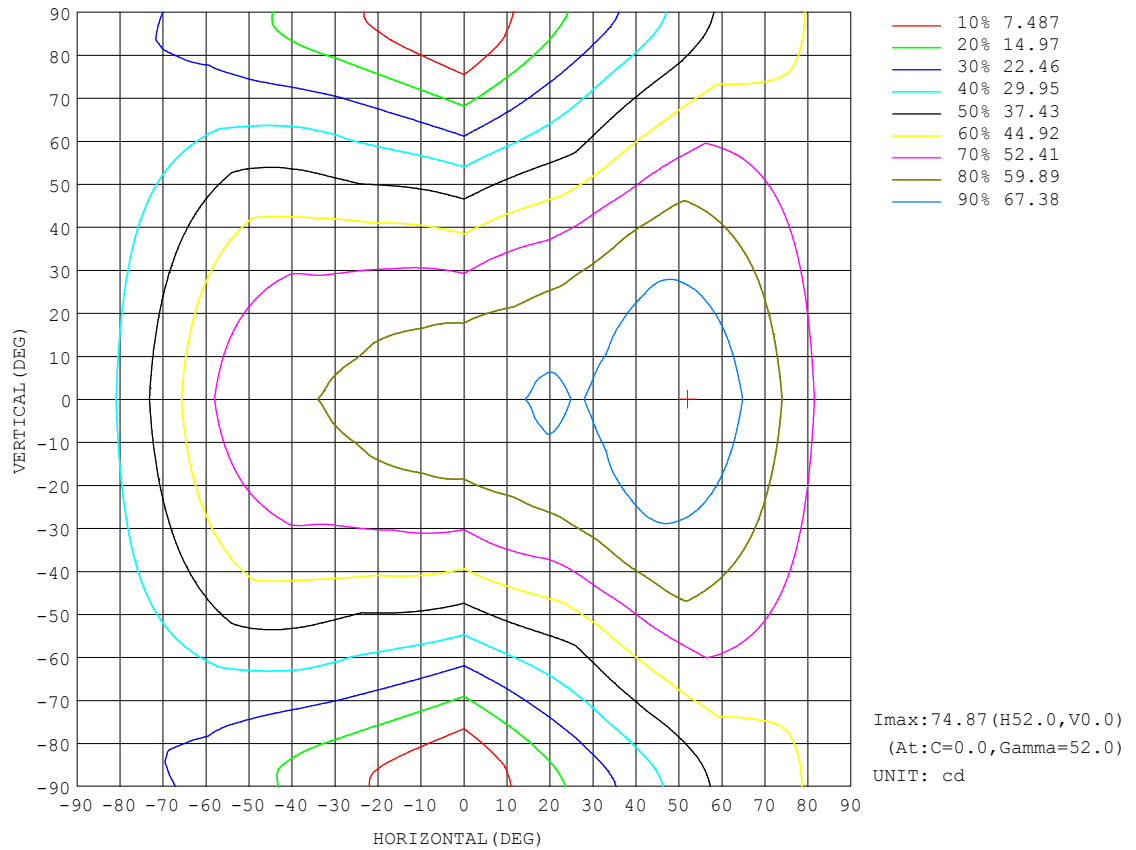
REFLECTANCE										
Ceiling	0.8	0.8	0.8	0.7	0.7	0.7	0.5	0.5	0.5	0
Walls	0.7	0.5	0.3	0.7	0.5	0.3	0.7	0.5	0.3	0
Working plane	0.2	0.2	0.2	0.2	0.2	0.2	0.2	0.2	0.2	0
ROOM INDEX	UTILIZATION FACTORS (PERCENT) $k(RI) \times RCR = 5$									
$k = 0.60$	45	32	25	43	32	25	41	31	24	17
0.80	54	41	33	52	40	32	49	38	31	23
1.00	62	48	40	59	47	39	55	47	38	28
1.25	69	56	47	66	54	46	61	51	44	33
1.50	74	61	53	71	59	51	65	56	49	37
2.00	81	70	61	78	67	60	71	63	56	43
2.50	86	76	67	82	73	65	75	67	61	46
3.00	90	80	73	86	77	70	78	71	65	50
4.00	95	87	80	90	83	77	82	76	71	54
5.00	98	91	85	93	87	81	84	79	75	57
ROOM INDEX	UF (total)									Direct
According to DIN EN 13032-2 2004			Suspended					SHRNOM = 1.25		

C Range: 0 - 360DEG
 C Interval: 30.0DEG
 Test Speed: HIGH
 Temperature: 25.3DEG
 Operators: LPC
 Test Date: 2022-01-11

γ Range: 0 - 180DEG
 γ Interval: 1.0DEG
 Test System: EVERFINE GO-2000B_V1 SYSTEM V2.0.269
 Humidity: 65.0%
 Test Distance: 9.200m [K=1.0000]
 Remarks:

ISOCANDELA DIAGRAM

Test:U:24.00V I:0.3336A P:8.006W PF:1.000 Freq:0Hz Lamp Flux:363.922x1 lm		
NAME: SF18-24V-2835-120-3000+5700-80-5700	TYPE: 硅胶	WEIGHT:
SPEC.:	DIM.: 16.5mm*16.5mm	SERIAL No.:2022011105
MFR.: OLYMPIA	SUR.:1*0.0165	Shielding Angle:

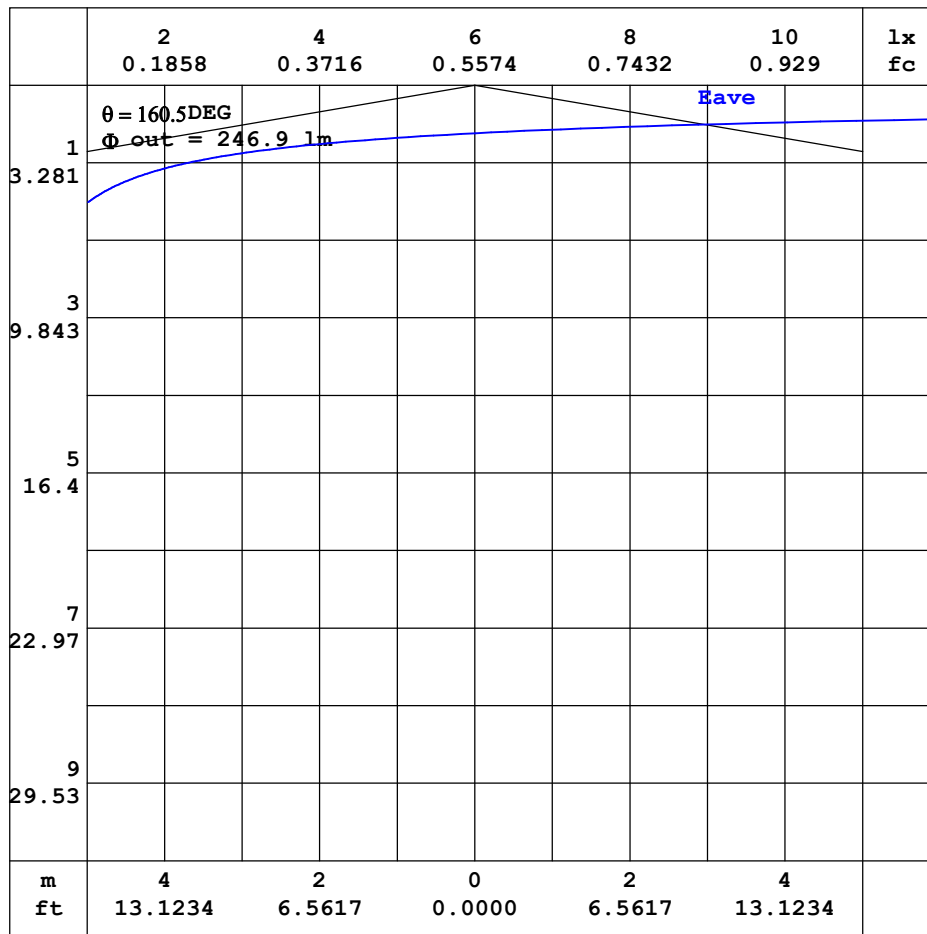


C Range: 0 - 360DEG
C Interval: 30.0DEG
Test Speed: HIGH
Temperature: 25.3DEG
Operators: LPC
Test Date: 2022-01-11

γ Range: 0 - 180DEG
 γ Interval: 1.0DEG
Test System: EVERFINE GO-2000B_V1 SYSTEM V2.0.269
Humidity: 65.0%
Test Distance: 9.200m [K=1.0000]
Remarks:

AAI CURVES

Test:U:24.00V I:0.3336A P:8.006W PF:1.000 Freq:0Hz Lamp Flux:363.922x1 lm		
NAME: SF18-24V-2835-120-3000+5700-80-5700	TYPE: 硅胶	WEIGHT:
SPEC.:	DIM.: 16.5mm*16.5mm	SERIAL No.:2022011105
MFR.: OLYMPIA	SUR.:1*0.0165	Shielding Angle:



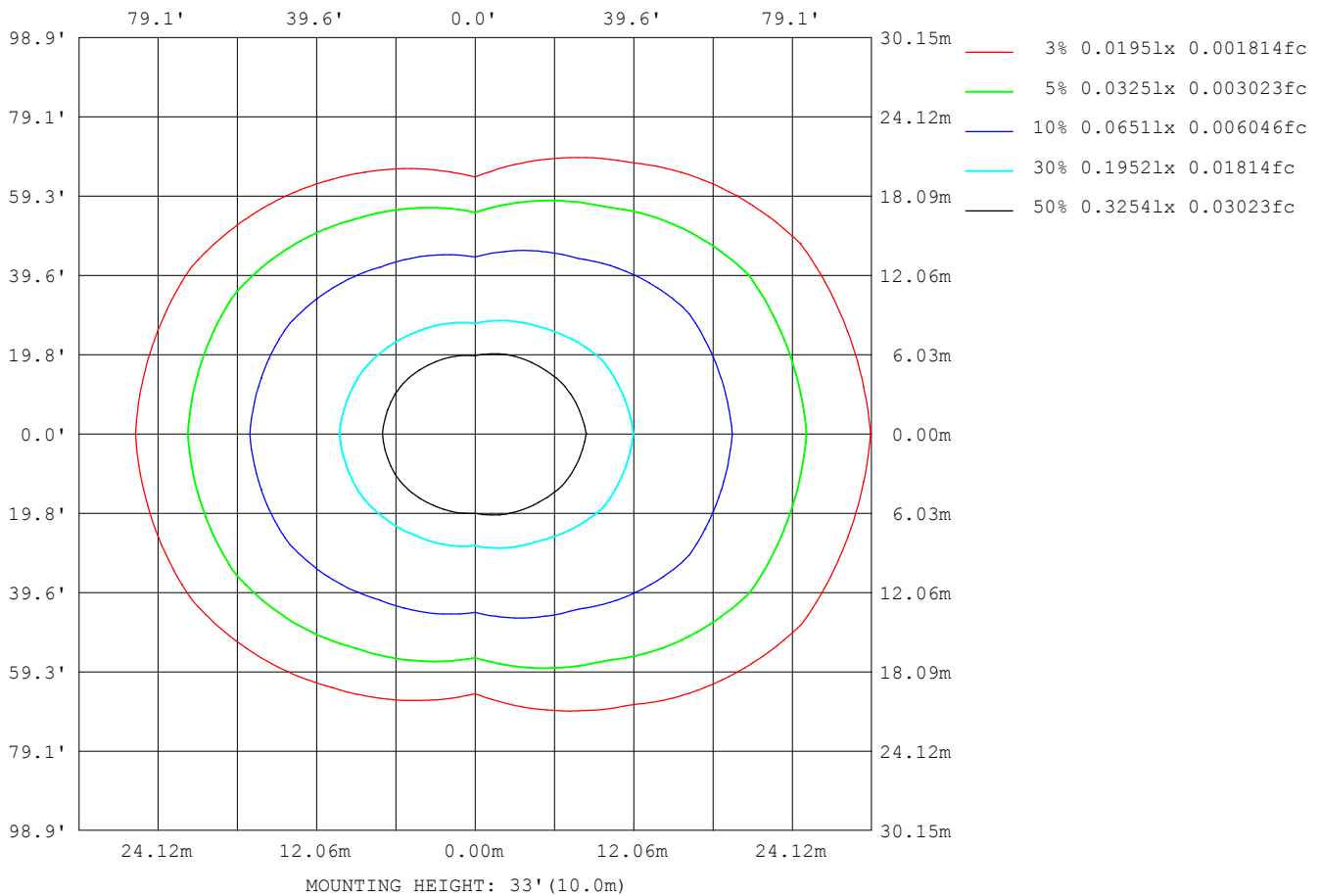
Note: The Curves indicate the illuminated area and the average illumination when the luminaire is at different distance.

C Range: 0 - 360DEG
 C Interval: 30.0DEG
 Test Speed: HIGH
 Temperature: 25.3DEG
 Operators: LPC
 Test Date: 2022-01-11

γ Range: 0 - 180DEG
 γ Interval: 1.0DEG
 Test System: EVERFINE GO-2000B_V1 SYSTEM V2.0.269
 Humidity: 65.0%
 Test Distance: 9.200m [K=1.0000]
 Remarks:

ISOLUX DIAGRAM

Test:U:24.00V I:0.3336A P:8.006W PF:1.000 Freq:0Hz Lamp Flux:363.922x1 lm		
NAME: SF18-24V-2835-120-3000+5700-80-5700	TYPE: 硅胶	WEIGHT:
SPEC.:	DIM.: 16.5mm*16.5mm	SERIAL No.:2022011105
MFR.: OLYMPIA	SUR.:1*0.0165	Shielding Angle:



C Range: 0 - 360DEG
C Interval: 30.0DEG
Test Speed: HIGH
Temperature:25.3DEG
Operators:LPC
Test Date:2022-01-11

γ Range: 0 - 180DEG
 γ Interval: 1.0DEG
Test System:EVERFINE GO-2000B_V1 SYSTEM V2.0.269
Humidity:65.0%
Test Distance:9.200m [K=1.0000]
Remarks:

LED Avg.L Report

Test:U:24.00V I:0.3336A P:8.006W PF:1.000 Freq:0Hz Lamp Flux:363.922x1 lm		
NAME: SF18-24V-2835-120-3000+5700-80-5700	TYPE:硅胶	WEIGHT:
SPEC.:	DIM.: 16.5mm*16.5mm	SERIAL No.:2022011105
MFR.: OLYMPIA	SUR.:1*0.0165	Shielding Angle:

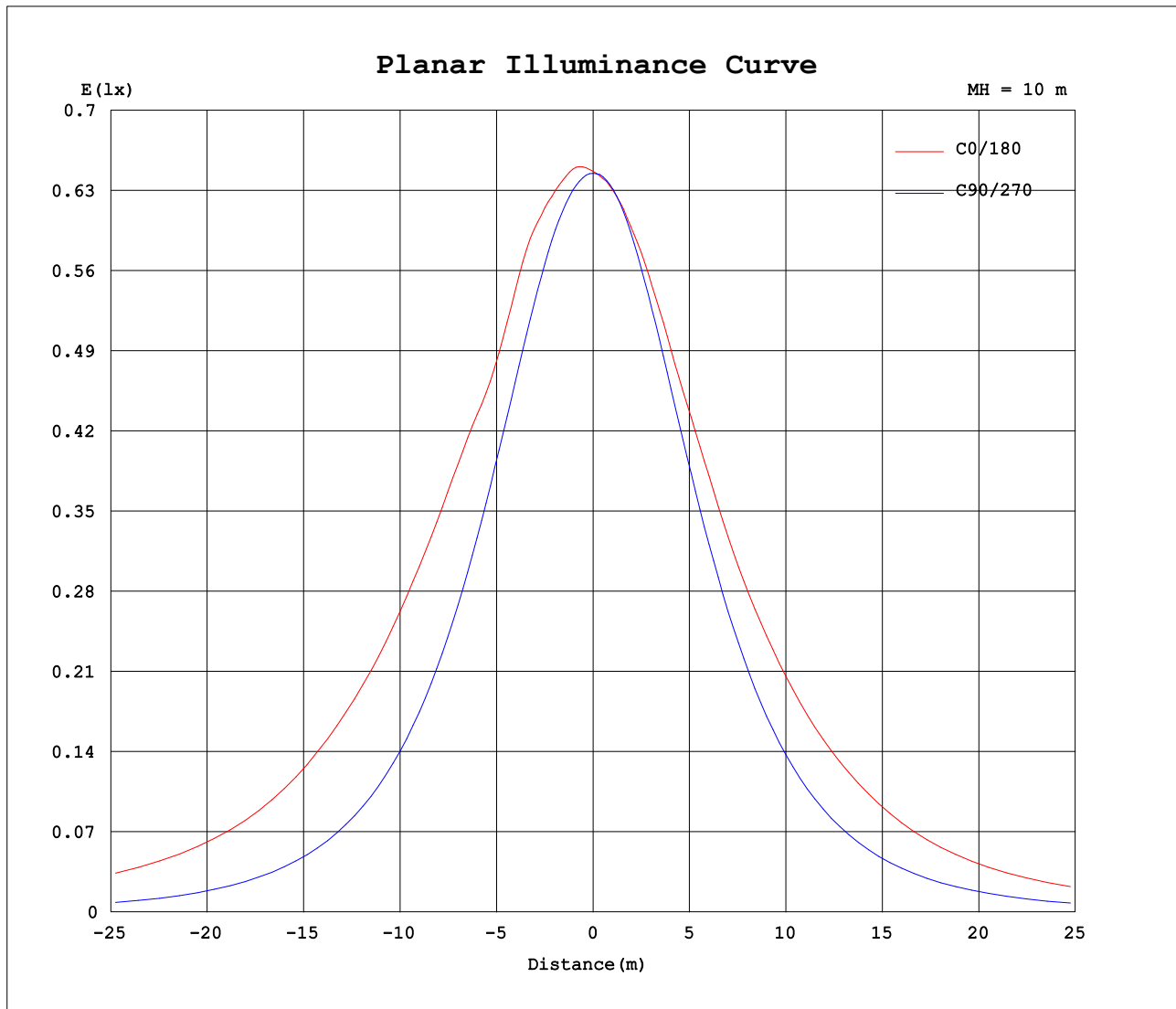
AvgL	cd/m2
L_0~180 (65) av	8094
L_0~180 (75) av	11068
L_0~180 (85) av	26556
L_90~270 (65) av	2694
L_90~270 (75) av	1990
L_90~270 (85) av	788
L_45 (65) av	5973
L_45 (75) av	7770
L_45 (85) av	17129

Standard: GB/T 29293-2012

C Range: 0 - 360DEG
C Interval: 30.0DEG
Test Speed: HIGH
Temperature:25.3DEG
Operators:LPC
Test Date:2022-01-11

γ Range: 0 - 180DEG
γ Interval: 1.0DEG
Test System:EVERFINE GO-2000B_V1 SYSTEM V2.0.269
Humidity:65.0%
Test Distance:9.200m [K=1.0000]
Remarks:

Planar Illuminance Curve



C Range: 0 - 360DEG
C Interval: 30.0DEG
Test Speed: HIGH
Temperature: 25.3DEG
Operators: LPC
Test Date: 2022-01-11

γ Range: 0 - 180DEG
 γ Interval: 1.0DEG
Test System: EVERFINE GO-2000B_V1 SYSTEM V2.0.269
Humidity: 65.0%
Test Distance: 9.200m [K=1.0000]
Remarks:

LUMINOUS DISTRIBUTION INTENSITY DATA

Test:U:24.00V I:0.3336A P:8.006W PF:1.000 Freq:0Hz Lamp Flux:363.922x1 lm		
NAME: SF18-24V-2835-120-3000+5700-80-5700	TYPE: 硅胶	WEIGHT:
SPEC.:	DIM.: 16.5mm*16.5mm	SERIAL No.:2022011105
MFR.: OLYMPIA	SUR.:1*0.0165	Shielding Angle:

Table--1

UNIT: cd

C (DEG) γ (DEG)	0	30	60	90	120	150	180	210	240	270	300	330						
0	64.7	64.6	64.5	64.5	64.6	64.7	64.7	64.6	64.5	64.5	64.6	64.7						
5	65.8	65.4	64.7	64.2	64.2	64.2	64.1	64.1	64.1	64.2	64.8	65.5						
10	66.4	65.9	64.6	63.3	63.3	63.4	63.5	63.4	63.2	63.2	64.5	66.0						
15	67.5	66.2	63.8	61.6	61.7	62.6	63.0	62.5	61.5	61.1	63.5	66.1						
20	68.4	66.9	62.2	59.1	59.8	61.4	62.1	61.3	59.4	58.5	61.7	66.6						
25	67.4	66.3	60.3	56.1	57.5	60.0	61.1	59.8	57.2	55.4	59.8	66.1						
30	68.3	64.7	58.9	52.6	54.9	58.8	60.6	58.5	54.6	51.8	58.2	64.4						
35	71.1	64.8	56.6	48.8	51.9	57.1	59.7	56.9	51.8	47.8	56.1	64.3						
40	72.9	66.1	53.2	44.4	48.6	55.1	58.9	55.0	48.5	43.4	53.0	65.5						
45	74.3	66.4	49.4	39.8	45.0	53.6	58.2	53.4	45.0	38.9	49.5	65.8						
50	74.8	66.3	45.9	34.9	40.7	51.6	56.9	51.6	40.9	34.0	46.0	65.8						
55	74.2	65.1	41.9	29.7	36.4	48.8	54.8	48.9	36.6	28.9	42.1	64.7						
60	71.1	63.0	38.0	24.6	32.5	45.6	50.6	45.7	32.7	23.6	38.1	62.5						
65	67.2	59.9	34.8	19.3	28.8	41.3	45.6	41.5	29.0	18.3	34.9	59.5						
70	63.6	55.8	31.8	14.1	24.5	36.0	40.4	36.3	24.8	13.0	31.9	55.5						
75	58.9	51.6	28.4	9.08	19.9	30.2	35.6	30.5	20.2	7.91	28.6	51.2						
80	53.8	46.6	24.8	4.60	15.4	25.6	30.8	25.5	15.5	3.54	24.8	46.4						
85	49.7	42.1	21.3	1.34	11.4	22.0	26.7	21.7	11.3	0.92	21.1	41.7						
90	48.4	39.3	18.8	0.98	9.85	21.5	25.6	20.9	9.45	0.75	18.4	38.7						
95	49.2	38.9	18.4	1.03	9.74	22.3	26.7	21.7	9.36	0.76	17.9	38.1						
100	47.7	36.4	18.1	1.16	9.49	21.3	26.8	20.8	9.18	0.83	17.6	35.7						
105	46.3	37.7	16.1	1.22	8.59	21.0	26.3	20.8	8.35	0.89	15.7	37.0						
110	45.1	37.8	16.3	1.27	8.77	20.1	25.3	19.8	8.58	0.91	15.7	37.2						
115	43.7	36.7	16.2	1.34	8.70	18.9	24.0	18.7	8.48	0.96	14.6	36.3						
120	41.4	33.7	14.6	1.43	8.07	17.4	22.3	17.3	7.85	1.08	13.5	32.0						
125	37.6	30.8	12.6	1.48	7.23	15.8	20.1	15.6	7.05	1.17	12.0	29.2						
130	33.7	26.9	9.63	1.55	6.08	14.0	17.6	13.9	6.07	1.26	10.4	25.4						
135	29.7	21.0	7.03	1.65	5.39	12.0	15.2	12.1	5.26	1.38	8.41	20.7						
140	25.4	16.7	6.03	1.75	4.54	10.1	12.9	10.0	4.47	1.48	6.81	15.2						
145	21.1	13.0	5.12	1.81	3.87	8.06	10.3	8.13	3.89	1.56	5.53	12.2						
150	16.8	9.88	4.25	1.94	3.07	6.56	8.31	6.61	3.11	1.68	4.40	9.42						
155	12.9	7.51	3.78	1.95	2.43	5.32	6.55	5.40	2.40	1.73	3.89	7.10						
160	9.34	5.42	3.38	1.96	2.00	3.79	4.83	3.89	1.91	1.80	3.47	5.15						
165	6.60	3.99	3.00	1.97	1.92	2.44	3.19	2.52	1.84	1.86	2.99	3.82						
170	2.99	3.06	2.48	1.98	1.82	1.96	1.87	2.03	1.76	1.89	2.50	3.02						
175	2.15	2.30	2.19	1.98	1.71	1.79	1.80	1.87	1.70	1.94	2.16	2.28						
180	1.92	2.01	2.03	1.98	1.98	1.99	1.84	1.96	1.97	1.97	1.99	2.02						

C Range: 0 - 360DEG
C Interval: 30.0DEG
Test Speed: HIGH
Temperature:25.3DEG
Operators:LPC
Test Date:2022-01-11

γ Range: 0 - 180DEG
γ Interval: 1.0DEG
Test System:EVERFINE GO-2000B_V1 SYSTEM V2.0.269
Humidity:65.0%
Test Distance:9.200m [K=1.0000]
Remarks:

Photometric Data Table [cd]

G/C	0.0	30.0	60.0	90.0	120.0	150.0	180.0	210.0	240.0	270.0
0.0	64.68	64.60	64.51	64.51	64.64	64.67	64.68	64.60	64.51	64.51
3.0	65.33	65.07	64.65	64.39	64.43	64.40	64.31	64.31	64.29	64.45
6.0	65.94	65.57	64.69	64.05	64.04	64.05	64.02	63.97	63.98	64.11
9.0	66.27	65.88	64.65	63.47	63.47	63.63	63.71	63.57	63.43	63.44
12.0	66.77	65.98	64.39	62.71	62.77	63.01	63.22	62.97	62.59	62.40
15.0	67.52	66.19	63.83	61.57	61.72	62.59	62.96	62.54	61.51	61.15
18.0	68.38	66.65	62.95	60.18	60.53	61.86	62.37	61.80	60.28	59.71
21.0	68.21	67.08	61.81	58.57	59.34	61.15	61.85	61.00	59.02	57.94
24.0	67.57	66.65	60.70	56.77	57.99	60.31	61.27	60.13	57.74	56.10
27.0	67.20	65.66	59.76	54.81	56.46	59.41	61.00	59.18	56.20	54.07
30.0	68.26	64.71	58.86	52.65	54.87	58.78	60.63	58.54	54.65	51.79
33.0	70.18	64.47	57.71	50.34	53.15	57.89	60.04	57.69	53.02	49.54
36.0	71.61	65.27	55.97	47.86	51.27	56.66	59.41	56.51	51.16	46.94
39.0	72.51	66.00	53.93	45.31	49.24	55.52	58.94	55.39	49.20	44.38
42.0	73.61	66.28	51.72	42.62	47.15	54.39	58.75	54.25	47.16	41.65
45.0	74.30	66.37	49.42	39.76	44.95	53.57	58.25	53.43	44.95	38.88
48.0	74.60	66.41	47.25	36.89	42.49	52.54	57.49	52.46	42.66	35.96
51.0	74.86	66.19	45.14	33.85	39.82	51.15	56.58	51.19	40.03	32.97
54.0	74.47	65.47	42.78	30.76	37.14	49.43	55.37	49.47	37.42	29.95
57.0	73.14	64.30	40.31	27.69	34.82	47.54	53.30	47.60	34.98	26.83
60.0	71.06	63.02	38.04	24.56	32.50	45.62	50.56	45.67	32.66	23.61
63.0	68.81	61.32	36.10	21.35	30.26	43.09	47.68	43.24	30.43	20.48
66.0	66.54	59.14	34.18	18.21	27.94	40.35	44.56	40.52	28.23	17.25
69.0	64.35	56.71	32.44	15.06	25.42	37.24	41.38	37.56	25.68	14.04
72.0	61.75	54.13	30.59	11.99	22.76	33.56	38.48	33.95	22.94	10.94
75.0	58.94	51.62	28.43	9.084	19.95	30.23	35.59	30.55	20.17	7.909
78.0	55.80	48.76	26.29	6.255	17.18	27.30	32.69	27.36	17.37	5.139
81.0	52.83	45.64	24.10	3.833	14.50	24.71	29.84	24.68	14.61	2.800
84.0	50.43	42.93	22.02	1.909	12.06	22.51	27.26	22.28	12.07	1.060
87.0	48.71	40.60	20.05	1.040	10.20	21.07	25.68	20.82	10.05	0.7745
90.0	48.36	39.27	18.80	0.9801	9.846	21.49	25.59	20.89	9.448	0.7463
93.0	48.56	38.67	18.49	1.010	9.836	22.08	26.31	21.41	9.433	0.7571
96.0	49.30	39.00	18.33	1.040	9.695	22.42	26.87	21.86	9.307	0.7679
99.0	48.26	36.48	18.19	1.086	9.545	21.04	26.74	20.61	9.222	0.7787
102.0	47.19	37.28	17.21	1.180	8.955	21.25	26.78	21.11	8.832	0.8744
105.0	46.27	37.73	16.12	1.216	8.589	21.00	26.35	20.78	8.348	0.8868
108.0	45.59	37.79	16.27	1.236	8.649	20.45	25.76	20.15	8.429	0.8991
111.0	44.82	37.70	15.68	1.267	8.825	19.85	25.07	19.62	8.639	0.9115
114.0	43.97	37.08	16.32	1.322	8.791	19.17	24.27	18.97	8.558	0.9397
117.0	42.89	35.50	16.17	1.382	8.475	18.34	23.33	18.23	8.241	1.010
120.0	41.35	33.66	14.58	1.432	8.073	17.40	22.25	17.28	7.854	1.075
123.0	39.13	31.87	13.45	1.463	7.591	16.37	21.05	16.26	7.411	1.116
126.0	36.86	30.25	12.17	1.498	7.043	15.45	19.65	15.31	6.797	1.166
129.0	34.56	27.97	10.29	1.528	6.235	14.31	18.07	14.26	6.240	1.246
132.0	32.14	24.76	8.340	1.578	5.837	13.23	16.66	13.14	5.697	1.296
135.0	29.70	20.95	7.030	1.649	5.394	12.04	15.25	12.07	5.255	1.382
138.0	27.20	18.40	6.440	1.724	4.867	10.91	13.88	10.96	4.763	1.452
141.0	24.54	15.80	5.837	1.774	4.409	9.696	12.48	9.563	4.331	1.503
144.0	21.94	13.72	5.299	1.804	4.017	8.480	10.85	8.496	4.014	1.528
147.0	19.30	11.81	4.791	1.850	3.520	7.431	9.449	7.526	3.577	1.598
150.0	16.81	9.881	4.249	1.938	3.067	6.561	8.309	6.611	3.114	1.679
153.0	14.38	8.429	3.901	1.946	2.690	5.823	7.208	5.907	2.647	1.719
156.0	12.21	7.027	3.700	1.954	2.298	5.013	6.249	5.079	2.280	1.744
159.0	10.13	5.757	3.469	1.960	2.036	4.073	5.277	4.179	1.964	1.789
162.0	8.078	4.766	3.198	1.964	1.960	3.159	4.101	3.215	1.895	1.819
165.0	6.600	3.989	2.996	1.968	1.915	2.441	3.188	2.525	1.839	1.859
168.0	3.488	3.406	2.725	1.972	1.855	2.080	1.974	2.152	1.779	1.886
171.0	2.806	2.929	2.393	1.975	1.804	1.914	1.839	1.980	1.739	1.896
174.0	2.269	2.386	2.232	1.975	1.724	1.814	1.809	1.885	1.710	1.925
177.0	2.061	2.181	2.136	1.975	1.694	1.719	1.799	1.810	1.689	1.970
180.0	1.925	2.010	2.030	1.975	1.975	1.985	1.844	1.960	1.965	1.970
G/C	300.0	330.0								
0.0	64.64	64.67								
3.0	64.77	65.12								
6.0	64.75	65.60								
9.0	64.66	65.95								
12.0	64.19	66.02								
15.0	63.49	66.12								
18.0	62.52	66.41								
21.0	61.32	66.75								
24.0	60.09	66.41								
27.0	59.08	65.35								
30.0	58.25	64.44								

C Range: 0 - 360DEG
 C Interval: 30.0DEG
 Test Speed: HIGH
 Temperature: 25.3DEG
 Operators: LPC
 Test Date: 2022-01-11

γ Range: 0 - 180DEG
 γ Interval: 1.0DEG
 Test System: EVERFINE GO-2000B_V1 SYSTEM V2.0.269
 Humidity: 65.0%
 Test Distance: 9.200m [K=1.0000]
 Remarks:

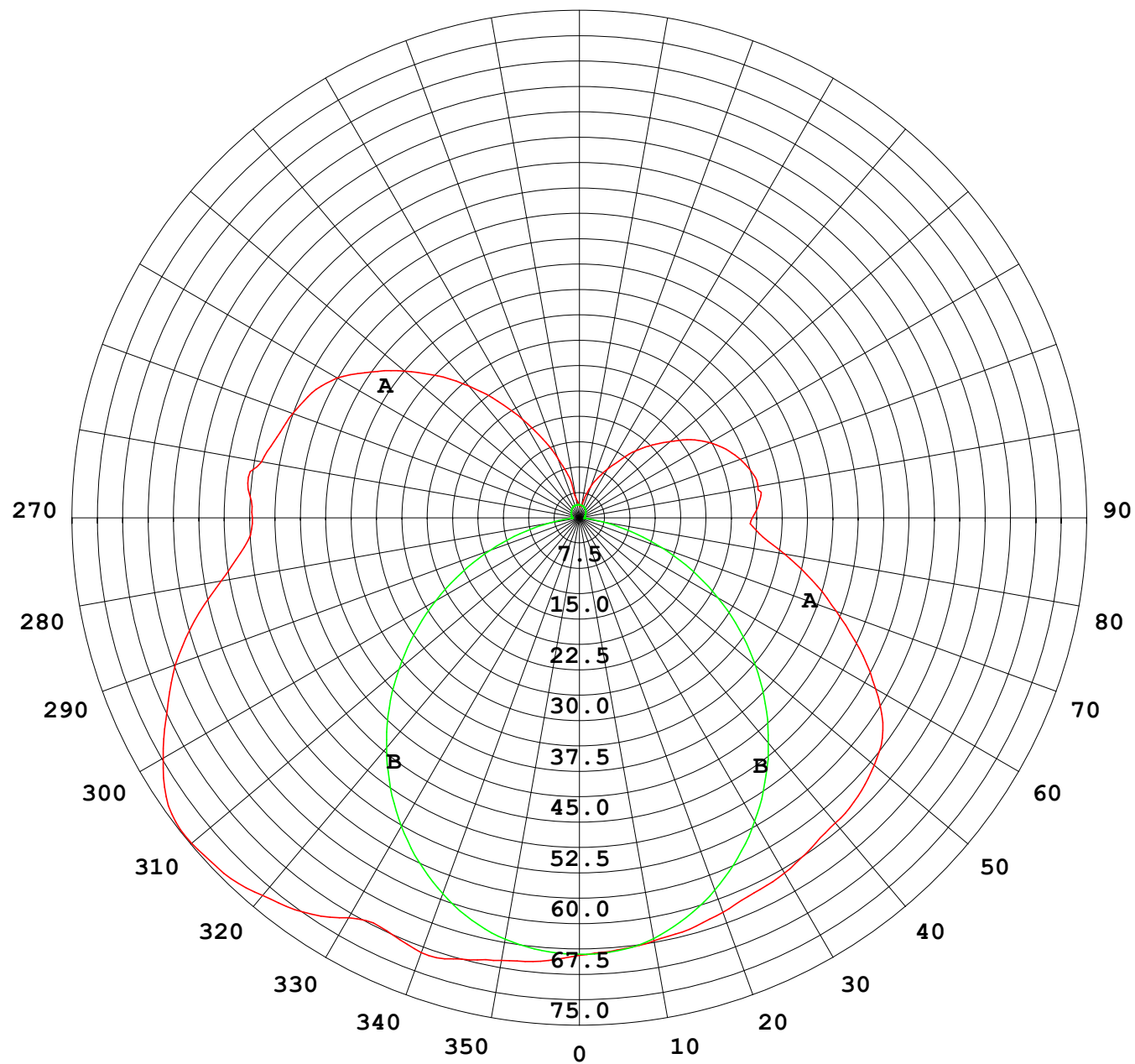
Photometric Data Table [cd]

33.0	57.17	64.07
36.0	55.56	64.65
39.0	53.64	65.40
42.0	51.63	65.66
45.0	49.54	65.83
48.0	47.37	65.86
51.0	45.25	65.71
54.0	42.88	65.06
57.0	40.44	63.85
60.0	38.09	62.51
63.0	36.13	60.87
66.0	34.28	58.77
69.0	32.44	56.33
72.0	30.62	53.79
75.0	28.56	51.24
78.0	26.35	48.48
81.0	24.08	45.39
84.0	21.88	42.51
87.0	19.77	40.10
90.0	18.37	38.68
93.0	17.96	37.96
96.0	17.80	38.23
99.0	17.71	35.54
102.0	16.91	36.49
105.0	15.67	36.99
108.0	15.66	37.16
111.0	15.45	37.08
114.0	14.66	36.61
117.0	14.66	34.90
120.0	13.46	31.98
123.0	12.57	30.14
126.0	11.75	28.72
129.0	10.83	26.49
132.0	9.600	23.45
135.0	8.414	20.68
138.0	7.419	17.41
141.0	6.555	14.58
144.0	5.787	12.74
147.0	5.078	11.19
150.0	4.395	9.417
153.0	4.060	7.965
156.0	3.819	6.678
159.0	3.552	5.456
162.0	3.256	4.566
165.0	2.990	3.821
168.0	2.718	3.318
171.0	2.381	2.891
174.0	2.201	2.414
177.0	2.111	2.177
180.0	1.985	2.020

C Range: 0 - 360DEG
C Interval: 30.0DEG
Test Speed: HIGH
Temperature:25.3DEG
Operators:LPC
Test Date:2022-01-11

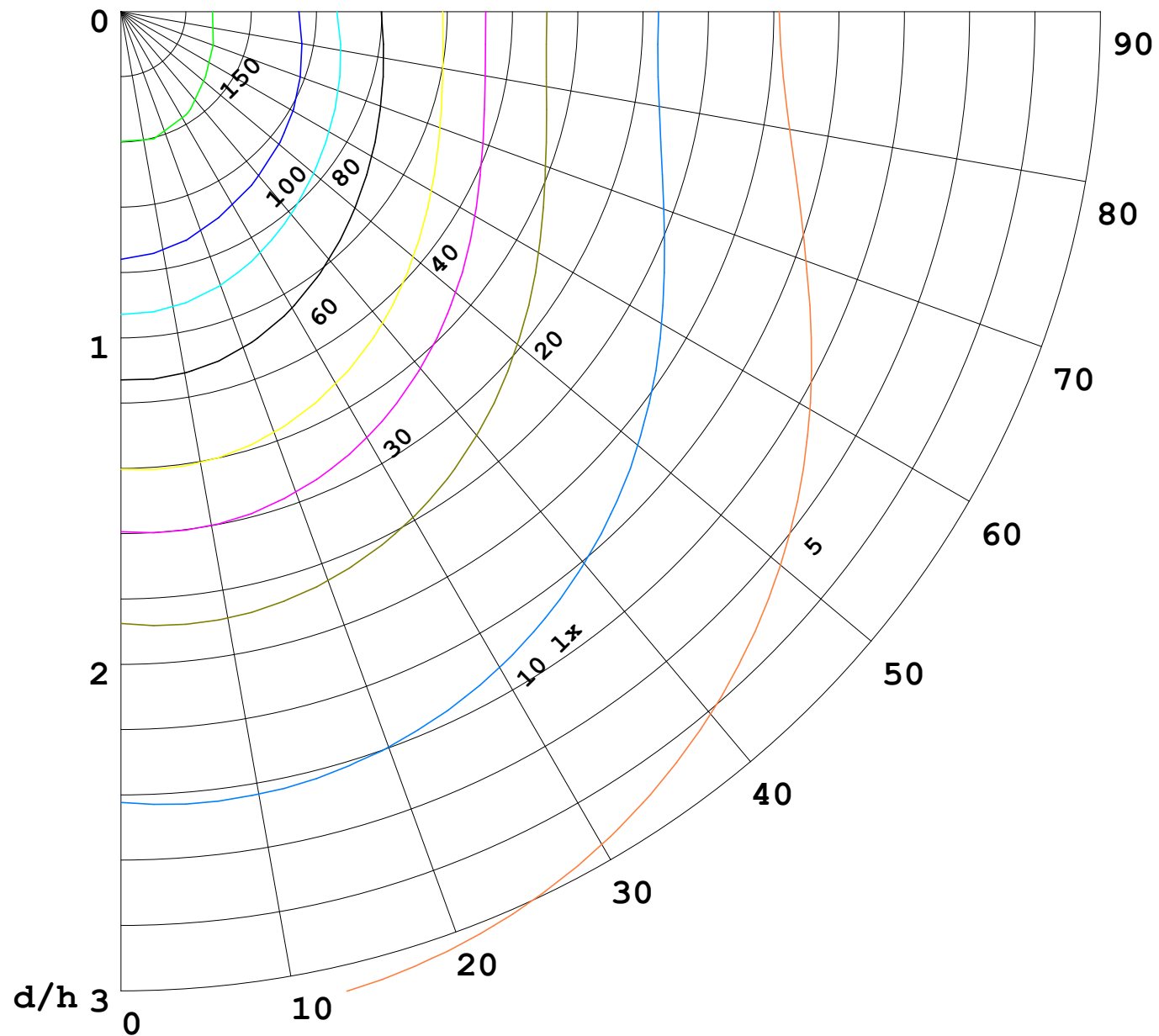
γ Range: 0 - 180DEG
γ Interval: 1.0DEG
Test System:EVERFINE GO-2000B_V1 SYSTEM V2.0.269
Humidity:65.0%
Test Distance:9.200m [K=1.0000]
Remarks:

I (cd)



1000 lm

$\kappa = 1$



F = 5000 lm
 K = 0.7
 Hcc = 0.0 m
 Hfc = 0.0 m
 Eave = 100 lx

	Pcc	Pw	Pfc
—	70	50	30
—	50	30	20

