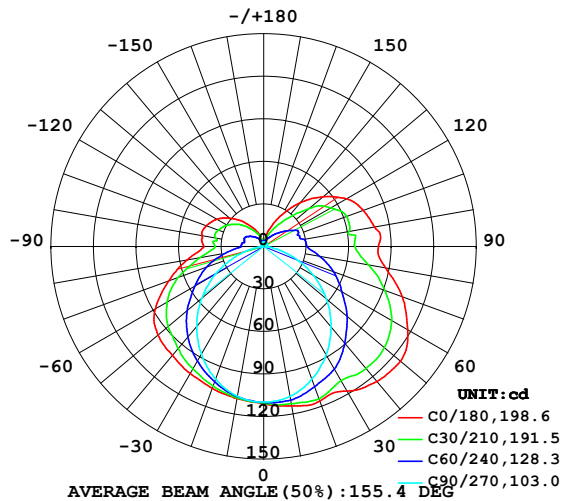


## LUMINAIRE PHOTOMETRIC TEST REPORT

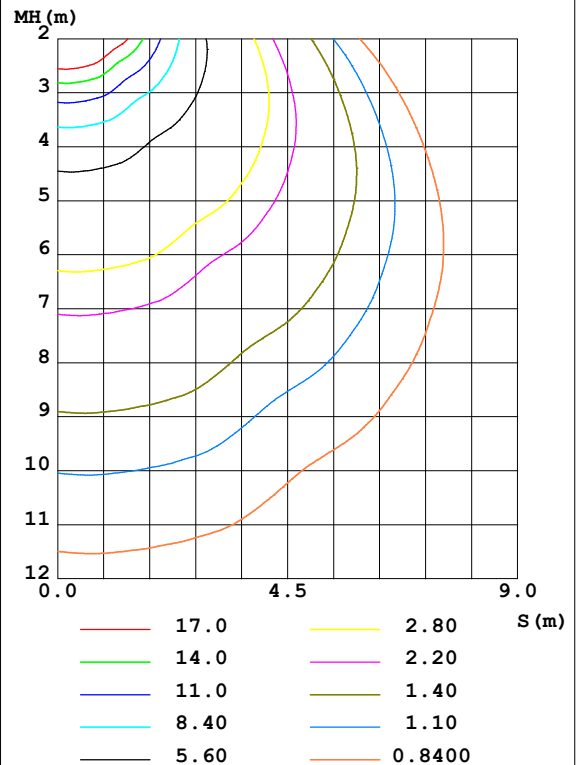
Test:U:24.00V I:0.6618A P:15.88W PF:1.000 Freq:0Hz Lamp Flux:612.324x1 lm		
NAME: SF18-24V-2835-120-2700+5700-80	TYPE: 硅胶	WEIGHT:
SPEC.:	DIM.: 16.5mm*16.5mm	SERIAL No.:2022011103
MFR.: OLYMPIA	SUR.:1*0.0165	Shielding Angle:

DATA OF LAMP		PHOTOMETRIC DATA Eff: 38.55 lm/W			
MODEL	2835	I <sub>max</sub> (cd)	126.0	S/MH (C0/180)	1.42
NOMINAL POWER (W)	15	LOR (%)	100.0	S/MH (C90/270)	1.20
RATED VOLTAGE (V)	24	TOTAL FLUX (lm)	612.32	η UP, DN (C0-180)	14.1, 38.3
NOMINAL FLUX (lm)	612.324	CIE CLASS	SEMI-D.	η UP, DN (C180-360)	11.7, 36.0
LAMPS INSIDE	1	η up (%)	25.7	CIBSE SHR NOM	1.50
TEST VOLTAGE (V)	24.0	η down (%)	74.3	CIBSE SHR MAX	1.55

LUMINOUS INTENSITY DISTRIBUTION DIAGRAM



C0 PLANE ISOLUX DIAGRAM (UNIT:lx)



C Range: 0 - 360DEG  
C Interval: 30.0DEG  
Test Speed: HIGH  
Temperature: 25.3DEG  
Operators: LPC  
Test Date: 2022-01-11

γ Range: 0 - 180DEG  
γ Interval: 1.0DEG  
Test System: EVERFINE GO-2000B\_V1 SYSTEM V2.0.269  
Humidity: 65.0%  
Test Distance: 9.200m [K=1.0000]  
Remarks:

## ZONAL FLUX DIAGRAM

ZONAL FLUX DIAGRAM:

$\gamma$	C0	C45	C90	C135	C180	C225	C270	C315	$\gamma$	$\Phi$ zone	$\Phi$ total	%lum, lamp
10	114.1	111.4	107.4	107.4	109.0	108.0	107.4	111.1	0- 10	10.49	10.49	1.71,1.71
20	116.0	109.8	99.58	102.5	106.4	103.2	99.46	109.4	10- 20	30.55	41.04	6.7,6.7
30	117.9	104.5	88.27	95.93	103.7	96.59	87.91	104.3	20- 30	47.55	88.59	14.5,14.5
40	124.3	100.7	74.02	87.82	100.2	88.57	73.53	100.8	30- 40	61.03	149.6	24.4,24.4
50	126.0	94.02	57.95	78.46	97.21	79.31	57.23	94.34	40- 50	69.66	219.3	35.8,35.8
60	117.3	84.04	40.51	66.67	88.29	67.37	39.48	84.23	50- 60	71.91	291.2	47.6,47.6
70	104.0	71.72	22.59	53.07	71.39	53.69	21.23	71.99	60- 70	66.69	357.9	58.4,58.4
80	87.39	57.62	6.854	36.10	54.79	36.45	5.509	57.69	70- 80	55.01	412.9	67.4,67.4
90	81.02	47.48	1.674	25.64	42.19	25.08	1.213	47.15	80- 90	41.81	454.7	74.3,74.3
100	79.49	45.13	1.951	25.48	44.27	25.06	1.512	44.92	90-100	37.92	492.6	80.4,80.4
110	74.77	44.05	2.106	24.84	43.05	24.30	1.585	43.49	100-110	35.41	528.0	86.2,86.2
120	67.52	38.75	2.387	22.50	38.37	22.02	1.869	37.91	110-120	31.34	559.4	91.4,91.4
130	54.74	28.70	2.594	18.20	31.02	17.83	2.136	26.89	120-130	23.69	583.1	95.2,95.2
140	40.40	18.06	3.006	13.58	23.06	13.24	2.543	16.85	130-140	15.16	598.2	97.7,97.7
150	25.84	10.89	3.262	9.203	15.30	9.170	2.784	10.38	140-150	8.354	606.6	99.1,99.1
160	13.95	6.806	3.267	5.700	8.806	5.570	3.005	6.391	150-160	3.968	610.5	99.7,99.7
170	4.647	4.321	3.337	3.402	3.412	3.383	3.211	4.117	160-170	1.452	612.0	99.9,99.9
180	3.337	3.440	3.372	3.392	3.282	3.435	3.357	3.405	170-180	0.3346	612.3	100,100
DEG	LUMINOUS INTENSITY:cd									UNIT:lm		

Conical surface Flux(90deg): 183.7 lm

%lum = 30.0%

%lamp = 30.0%

Conical surface Flux(120deg): 291.19 lm

%lum = 47.6%

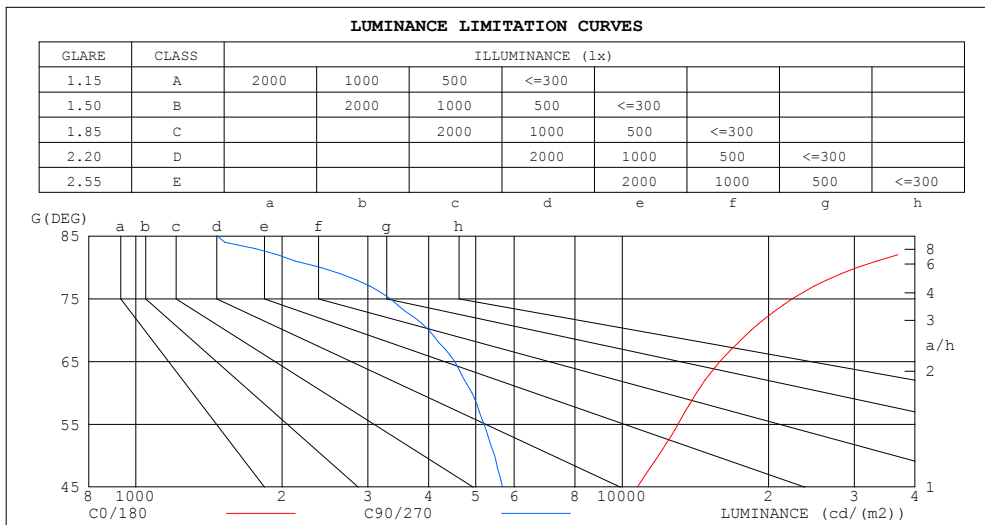
%lamp = 47.6%

C Range: 0 - 360DEG  
 C Interval: 30.0DEG  
 Test Speed: HIGH  
 Temperature:25.3DEG  
 Operators:LPC  
 Test Date:2022-01-11

$\gamma$  Range: 0 - 180DEG  
 $\gamma$  Interval: 1.0DEG  
 Test System:EVERFINE GO-2000B\_V1 SYSTEM V2.0.269  
 Humidity:65.0%  
 Test Distance:9.200m [K=1.0000]  
 Remarks:

## LUMINANCE LIMITATION CURVES

Test:U:24.00V I:0.6618A P:15.88W PF:1.000 Freq:0Hz Lamp Flux:612.324x1 lm		
NAME: SF18-24V-2835-120-2700+5700-80	TYPE: 硅胶	WEIGHT:
SPEC.:	DIM.: 16.5mm*16.5mm	SERIAL No.:2022011103
MFR.: OLYMPIA	SUR.:1*0.0165	Shielding Angle:



LUMINANCE cd/(m2)		
G (DEG)	C0/180	C90/270
85	56783	1470
80	30502	2392
75	22419	3335
70	18427	4002
65	15898	4523
60	14220	4910
55	13024	5202
50	11878	5463
45	10749	5678

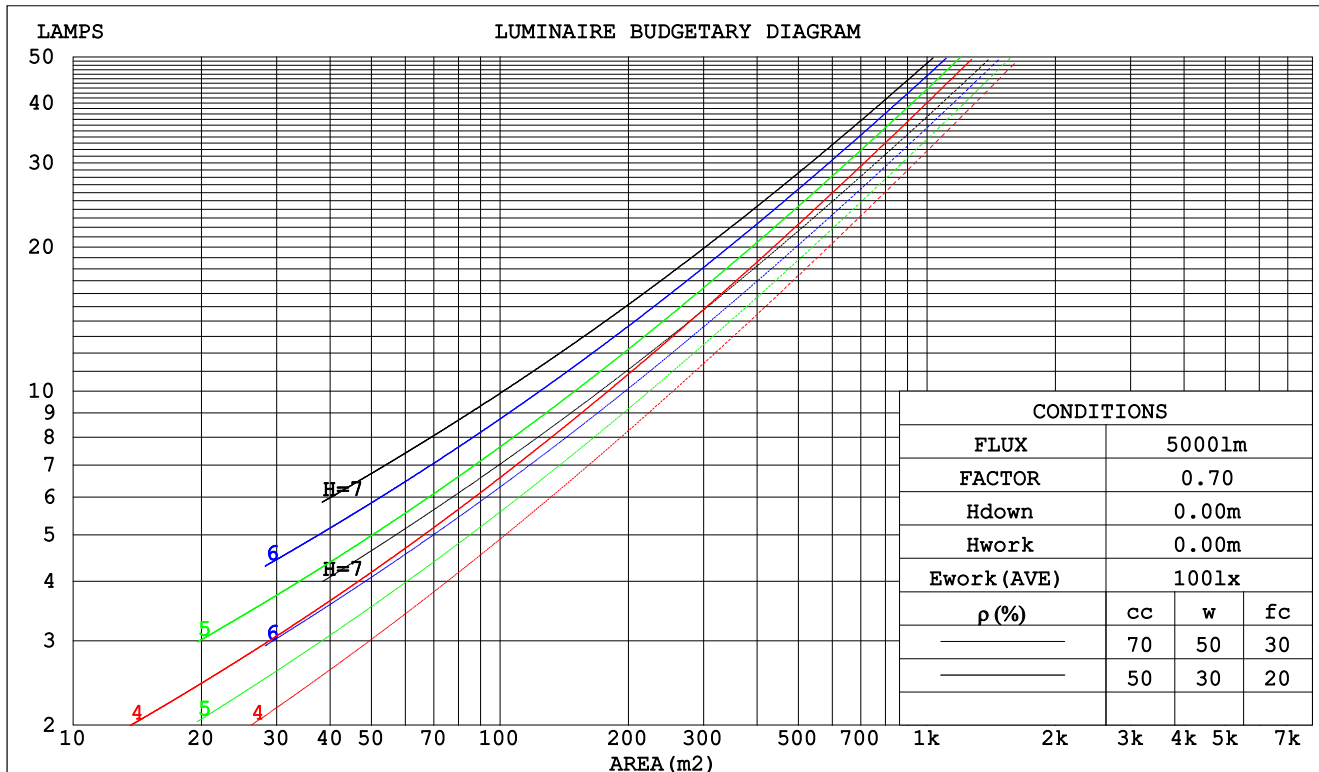
C Range: 0 - 360DEG  
C Interval: 30.0DEG  
Test Speed: HIGH  
Temperature:25.3DEG  
Operators:LPC  
Test Date:2022-01-11

$\gamma$  Range: 0 - 180DEG  
 $\gamma$  Interval: 1.0DEG  
Test System:EVERFINE GO-2000B\_V1 SYSTEM V2.0.269  
Humidity:65.0%  
Test Distance:9.200m [K=1.0000]  
Remarks:

## CU AND LUMINAIRE BUDGETARY ESTIMATE DIAGRAM

Test:U:24.00V I:0.6618A P:15.88W PF:1.000 Freq:0Hz Lamp Flux:612.324x1 lm		
NAME: SF18-24V-2835-120-2700+5700-80	TYPE: 硅胶	WEIGHT:
SPEC.:	DIM.: 16.5mm*16.5mm	SERIAL No.:2022011103
MFR.: OLYMPIA	SUR.:1*0.0165	Shielding Angle:

pcc	80%			70%			50%			30%			10%			0
pw	50%	30%	10%	50%	30%	10%	50%	30%	10%	50%	30%	10%	50%	30%	10%	0
pfc	20%			20%			20%			20%			20%			0
RCR	RCR:Room Cavity Ratio						Coefficients of Utilization(CU)									
0.0	1.13	1.13	1.13	1.07	1.07	1.07	.97	.97	.97	.87	.87	.87	.78	.78	.78	.74
1.0	.94	.89	.84	.89	.85	.80	.80	.77	.73	.72	.69	.66	.64	.62	.60	.56
2.0	.80	.73	.66	.76	.69	.63	.68	.63	.58	.61	.57	.53	.55	.51	.48	.44
3.0	.70	.61	.54	.66	.58	.51	.59	.53	.47	.53	.48	.43	.47	.43	.39	.36
4.0	.61	.52	.44	.58	.49	.43	.52	.45	.39	.47	.41	.36	.42	.37	.33	.30
5.0	.54	.45	.38	.51	.43	.36	.46	.39	.33	.42	.35	.31	.37	.32	.28	.25
6.0	.48	.39	.32	.46	.37	.31	.41	.34	.29	.37	.31	.27	.33	.28	.24	.22
7.0	.43	.34	.28	.41	.33	.27	.37	.30	.25	.34	.28	.23	.30	.25	.21	.19
8.0	.39	.31	.25	.38	.29	.24	.34	.27	.22	.31	.25	.21	.28	.23	.19	.17
9.0	.36	.28	.22	.34	.27	.21	.31	.24	.20	.28	.23	.18	.26	.21	.17	.15
10.0	.33	.25	.20	.31	.24	.19	.29	.22	.18	.26	.21	.17	.24	.19	.15	.13



C Range: 0 - 360DEG  
C Interval: 30.0DEG  
Test Speed: HIGH  
Temperature:25.3DEG  
Operators:LPC  
Test Date:2022-01-11

γ Range: 0 - 180DEG  
γ Interval: 1.0DEG  
Test System:EVERFINE GO-2000B\_V1 SYSTEM V2.0.269  
Humidity:65.0%  
Test Distance:9.200m [K=1.0000]  
Remarks:

## WEC AND CCEC

Test:U:24.00V I:0.6618A P:15.88W PF:1.000 Freq:0Hz Lamp Flux:612.324x1 lm		
NAME: SF18-24V-2835-120-2700+5700-80	TYPE: 硅胶	WEIGHT:
SPEC.:	DIM.: 16.5mm*16.5mm	SERIAL No.:2022011103
MFR.: OLYMPIA	SUR.:1*0.0165	Shielding Angle:

pcc	80%			70%			50%			30%			10%			0	
pw	50%	30%	10%	50%	30%	10%	50%	30%	10%	50%	30%	10%	50%	30%	10%	0	
pfc	20%			20%			20%			20%			20%			0	
RCR	RCR:Room Cavity Ratio						Wall Exitance Coeffcients (WEC)										
0.0																	
1.0	.378	.215	.068	.363	.207	.066	.335	.192	.061	.309	.178	.057	.285	.165	.053		
2.0	.329	.180	.055	.315	.174	.053	.290	.161	.050	.266	.149	.047	.244	.138	.044		
3.0	.293	.156	.047	.280	.150	.045	.257	.139	.042	.236	.129	.040	.216	.119	.037		
4.0	.264	.137	.040	.253	.132	.039	.231	.123	.037	.212	.114	.034	.194	.105	.032		
5.0	.240	.122	.035	.230	.118	.034	.210	.110	.032	.192	.102	.030	.176	.094	.028		
6.0	.220	.110	.032	.211	.106	.031	.193	.099	.029	.176	.092	.027	.161	.085	.025		
7.0	.203	.100	.028	.194	.097	.028	.178	.090	.026	.163	.083	.024	.149	.077	.023		
8.0	.188	.092	.026	.180	.089	.025	.165	.083	.024	.151	.077	.022	.138	.071	.021		
9.0	.175	.085	.024	.168	.082	.023	.154	.076	.022	.141	.071	.020	.129	.065	.019		
10.0	.164	.079	.022	.157	.076	.021	.144	.071	.020	.132	.066	.019	.121	.061	.017		

pcc	80%			70%			50%			30%			10%			0
pw	50%	30%	10%	50%	30%	10%	50%	30%	10%	50%	30%	10%	50%	30%	10%	0
pfc	20%			20%			20%			20%			20%			0
RCR	RCR:Room Cavity Ratio						Ceiling Cavity Exitance Coefficients(CCEC)									
0.0	.387	.387	.387	.330	.330	.330	.226	.226	.226	.130	.130	.130	.041	.041	.041	
1.0	.383	.353	.327	.328	.303	.281	.224	.209	.194	.129	.121	.113	.041	.039	.037	
2.0	.376	.331	.293	.322	.285	.253	.221	.197	.176	.127	.115	.103	.041	.037	.034	
3.0	.369	.315	.271	.316	.271	.235	.217	.189	.165	.125	.110	.097	.040	.036	.032	
4.0	.361	.302	.257	.310	.261	.223	.213	.182	.157	.123	.107	.093	.040	.035	.031	
5.0	.354	.293	.247	.304	.253	.215	.209	.177	.152	.121	.104	.090	.039	.034	.030	
6.0	.347	.285	.241	.298	.247	.209	.206	.173	.148	.119	.102	.088	.038	.033	.029	
7.0	.340	.278	.235	.292	.241	.205	.202	.169	.145	.117	.100	.087	.038	.033	.029	
8.0	.333	.273	.232	.287	.237	.202	.198	.166	.143	.115	.098	.085	.037	.032	.028	
9.0	.327	.268	.229	.282	.233	.199	.195	.164	.142	.114	.097	.084	.037	.032	.028	
10.0	.321	.264	.226	.277	.229	.197	.192	.161	.140	.112	.095	.084	.036	.031	.028	

C Range: 0 - 360DEG  
 C Interval: 30.0DEG  
 Test Speed: HIGH  
 Temperature:25.3DEG  
 Operators:LPC  
 Test Date:2022-01-11

γ Range: 0 - 180DEG  
 γ Interval: 1.0DEG  
 Test System:EVERFINE GO-2000B\_V1 SYSTEM V2.0.269  
 Humidity:65.0%  
 Test Distance:9.200m [K=1.0000]  
 Remarks:

UGR(Unified Glare Rating) Table

Test:U:24.00V I:0.6618A P:15.88W PF:1.000 Freq:0Hz Lamp Flux:612.324x1 lm										
NAME: SF18-24V-2835-120-2700+5700-80					TYPE: 硅胶			WEIGHT:		
SPEC.:					DIM.: 16.5mm*16.5mm			SERIAL No.:2022011103		
MFR.: OLYMPIA					SUR.:1*0.0165			Shielding Angle:		
ceiling/cavity	0.7	0.7	0.5	0.5	0.3	0.7	0.7	0.5	0.5	0.3
walls	0.5	0.3	0.5	0.3	0.3	0.5	0.3	0.5	0.3	0.3
working plane	0.2	0.2	0.2	0.2	0.2	0.2	0.2	0.2	0.2	0.2
Room dimensions	Viewed crosswise					Viewed endwise				
x = 2H y = 2H	23.1	24.3	23.7	24.9	25.7	18.8	20.1	19.4	20.7	21.4
3H	25.9	27.1	26.5	27.7	28.5	20.2	21.4	20.9	22.1	22.8
4H	27.4	28.5	28.1	29.2	30.0	20.8	21.9	21.4	22.5	23.3
6H	29.0	30.1	29.7	30.8	31.6	21.1	22.1	21.8	22.8	23.6
8H	29.9	31.0	30.6	31.6	32.4	21.2	22.2	21.8	22.9	23.7
12H	31.0	32.0	31.7	32.7	33.5	21.2	22.2	21.9	22.9	23.7
4H 2H	23.5	24.6	24.1	25.3	26.0	20.6	21.7	21.3	22.4	23.2
3H	26.6	27.6	27.3	28.3	29.1	22.3	23.3	23.0	24.0	24.8
4H	28.3	29.2	29.0	29.9	30.8	23.0	23.9	23.8	24.7	25.5
6H	30.2	31.0	30.9	31.7	32.6	23.6	24.4	24.3	25.2	26.0
8H	31.2	32.0	32.0	32.7	33.6	23.8	24.5	24.5	25.3	26.2
12H	32.4	33.1	33.2	33.9	34.8	23.9	24.6	24.7	25.4	26.3
8H 4H	28.6	29.4	29.4	30.1	31.0	24.6	25.3	25.4	26.1	27.0
6H	30.8	31.4	31.6	32.2	33.1	25.6	26.2	26.4	27.0	28.0
8H	32.0	32.6	32.8	33.4	34.3	26.1	26.6	26.8	27.4	28.4
12H	33.5	34.0	34.3	34.8	35.8	26.4	26.9	27.2	27.7	28.7
12H 4H	28.6	29.3	29.4	30.1	31.0	25.1	25.8	25.9	26.6	27.5
6H	30.9	31.4	31.7	32.2	33.2	26.4	27.0	27.2	27.8	28.7
8H	32.2	32.7	33.0	33.5	34.5	27.0	27.5	27.8	28.3	29.3
Variations with the observer position at spacings:										
S = 1.0H	+ 0.1 / - 0.1					+ 0.1 / - 0.1				
1.5H	+ 0.2 / - 0.2					+ 0.2 / - 0.3				
2.0H	+ 0.2 / - 0.3					+ 0.2 / - 0.4				

CIE Pub.117, 612.3 lm Total Lamp Luminous Flux Correct (8log(F/F0) = -1.7)

C Range: 0 - 360DEG  
C Interval: 30.0DEG  
Test Speed: HIGH  
Temperature:25.3DEG  
Operators:LPC  
Test Date:2022-01-11

γ Range: 0 - 180DEG  
γ Interval: 1.0DEG  
Test System:EVERFINE GO-2000B\_V1 SYSTEM V2.0.269  
Humidity:65.0%  
Test Distance:9.200m [K=1.0000]  
Remarks:

## UTILIZATION FACTORS TABLE

Test:U:24.00V I:0.6618A P:15.88W PF:1.000 Freq:0Hz Lamp Flux:612.324x1 lm		
NAME: SF18-24V-2835-120-2700+5700-80	TYPE: 硅胶	WEIGHT:
SPEC.:	DIM.: 16.5mm*16.5mm	SERIAL No.:2022011103
MFR.: OLYMPIA	SUR.:1*0.0165	Shielding Angle:

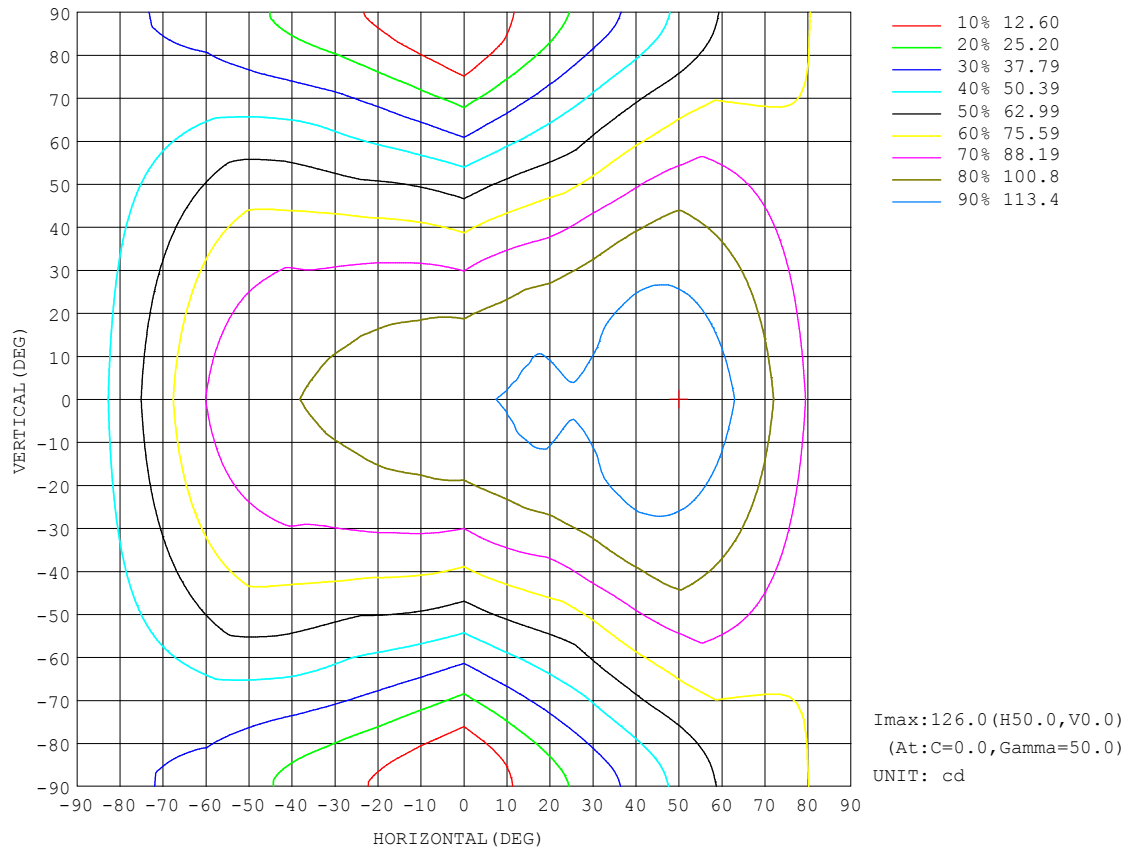
REFLECTANCE										
Ceiling	0.8	0.8	0.8	0.7	0.7	0.7	0.5	0.5	0.5	0
Walls	0.7	0.5	0.3	0.7	0.5	0.3	0.7	0.5	0.3	0
Working plane	0.2	0.2	0.2	0.2	0.2	0.2	0.2	0.2	0.2	0
ROOM INDEX	UTILIZATION FACTORS (PERCENT) $k(RI) \times RCR = 5$									
$k = 0.60$	45	33	25	44	32	25	41	31	24	17
0.80	54	41	33	52	40	32	49	38	31	23
1.00	62	49	40	60	47	39	55	47	38	28
1.25	69	56	47	66	54	46	61	51	44	33
1.50	74	62	53	71	60	51	65	56	49	37
2.00	81	70	62	78	68	60	71	63	56	43
2.50	86	76	68	82	73	65	75	67	61	47
3.00	90	80	73	86	77	70	78	71	65	50
4.00	95	87	80	90	83	77	82	76	71	54
5.00	98	91	85	93	87	81	84	79	75	57
ROOM INDEX	UF(total)									Direct
According to DIN EN 13032-2 2004			Suspended					SHRNOM = 1.25		

C Range: 0 - 360DEG  
 C Interval: 30.0DEG  
 Test Speed: HIGH  
 Temperature:25.3DEG  
 Operators:LPC  
 Test Date:2022-01-11

$\gamma$  Range: 0 - 180DEG  
 $\gamma$  Interval: 1.0DEG  
 Test System:EVERFINE GO-2000B\_V1 SYSTEM V2.0.269  
 Humidity:65.0%  
 Test Distance:9.200m [K=1.0000]  
 Remarks:

## ISOCANDELA DIAGRAM

Test:U:24.00V I:0.6618A P:15.88W PF:1.000 Freq:0Hz Lamp Flux:612.324x1 lm		
NAME: SF18-24V-2835-120-2700+5700-80	TYPE: 硅胶	WEIGHT:
SPEC.:	DIM.: 16.5mm*16.5mm	SERIAL No.:2022011103
MFR.: OLYMPIA	SUR.:1*0.0165	Shielding Angle:

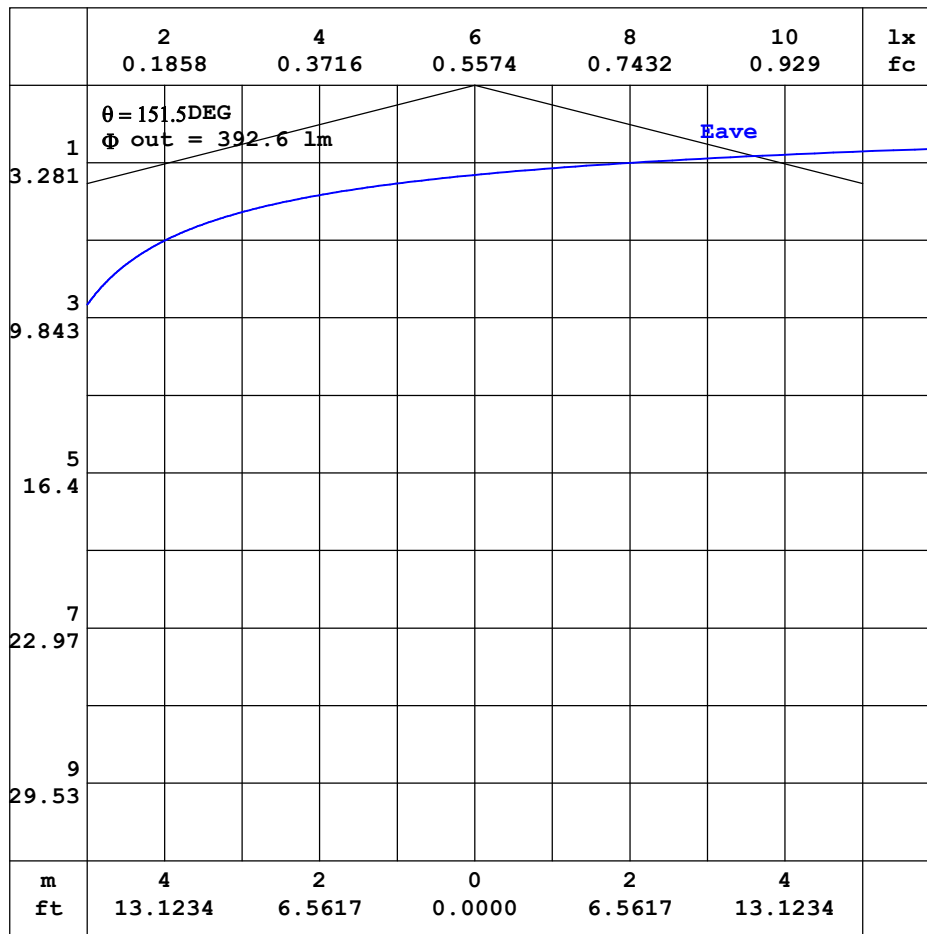


C Range: 0 - 360DEG  
C Interval: 30.0DEG  
Test Speed: HIGH  
Temperature:25.3DEG  
Operators:LPC  
Test Date:2022-01-11

$\gamma$  Range: 0 - 180DEG  
 $\gamma$  Interval: 1.0DEG  
Test System:EVERFINE GO-2000B\_V1 SYSTEM V2.0.269  
Humidity:65.0%  
Test Distance:9.200m [K=1.0000]  
Remarks:

## AAI CURVES

Test:U:24.00V I:0.6618A P:15.88W PF:1.000 Freq:0Hz Lamp Flux:612.324x1 lm		
NAME: SF18-24V-2835-120-2700+5700-80	TYPE: 硅胶	WEIGHT:
SPEC.:	DIM.: 16.5mm*16.5mm	SERIAL No.:2022011103
MFR.: OLYMPIA	SUR.:1*0.0165	Shielding Angle:



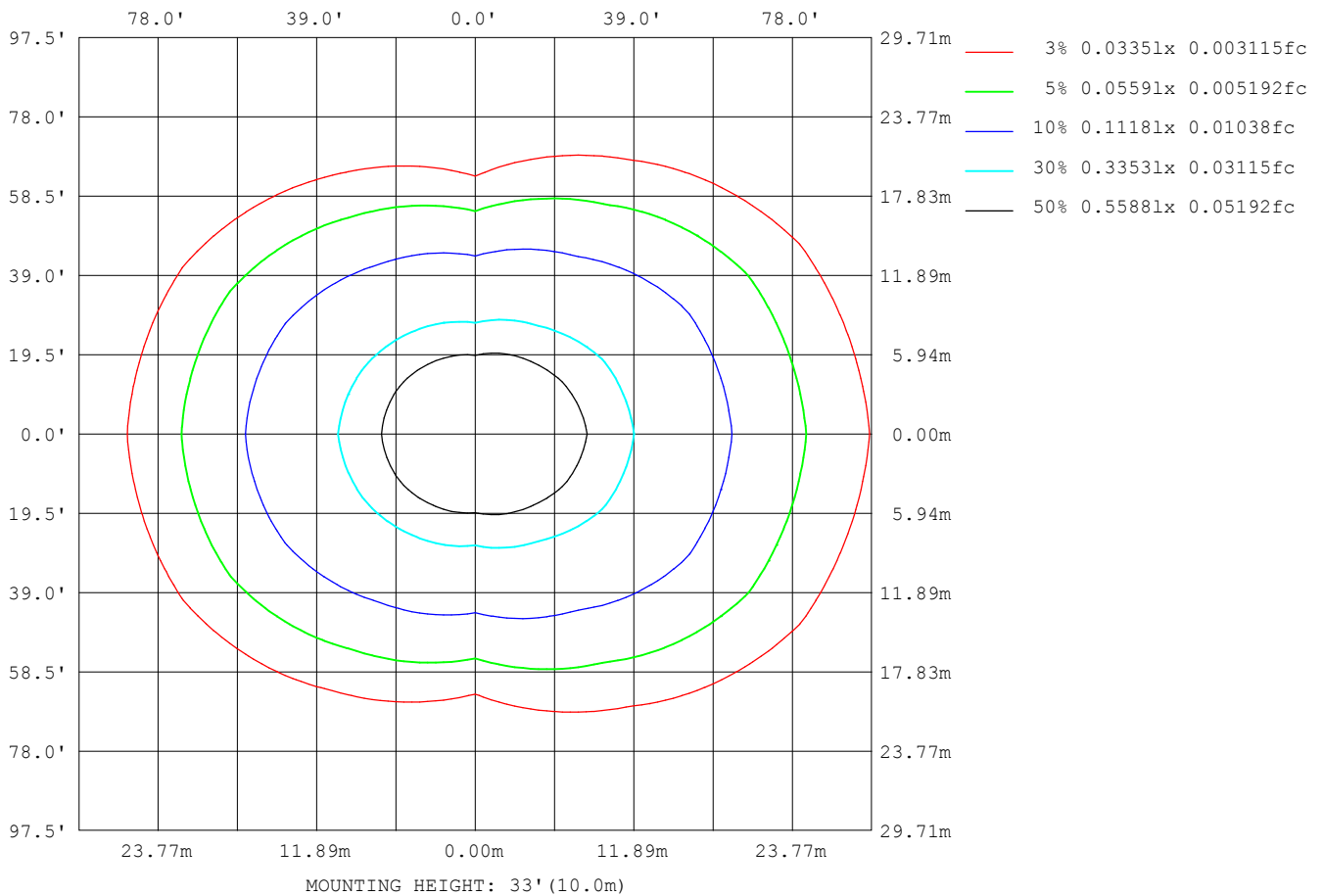
Note: The Curves indicate the illuminated area and the average illuminance when the luminaire is at different distance.

C Range: 0 - 360DEG  
 C Interval: 30.0DEG  
 Test Speed: HIGH  
 Temperature: 25.3DEG  
 Operators: LPC  
 Test Date: 2022-01-11

$\gamma$  Range: 0 - 180DEG  
 $\gamma$  Interval: 1.0DEG  
 Test System: EVERFINE GO-2000B\_V1 SYSTEM V2.0.269  
 Humidity: 65.0%  
 Test Distance: 9.200m [K=1.0000]  
 Remarks:

## ISOLUX DIAGRAM

Test:U:24.00V I:0.6618A P:15.88W PF:1.000 Freq:0Hz Lamp Flux:612.324x1 lm		
NAME: SF18-24V-2835-120-2700+5700-80	TYPE: 硅胶	WEIGHT:
SPEC.:	DIM.: 16.5mm*16.5mm	SERIAL No.:2022011103
MFR.: OLYMPIA	SUR.:1*0.0165	Shielding Angle:



C Range: 0 - 360DEG  
C Interval: 30.0DEG  
Test Speed: HIGH  
Temperature:25.3DEG  
Operators:LPC  
Test Date:2022-01-11

$\gamma$  Range: 0 - 180DEG  
 $\gamma$  Interval: 1.0DEG  
Test System:EVERFINE GO-2000B\_V1 SYSTEM V2.0.269  
Humidity:65.0%  
Test Distance:9.200m [K=1.0000]  
Remarks:

## LED Avg.L Report

Test:U:24.00V I:0.6618A P:15.88W PF:1.000 Freq:0Hz Lamp Flux:612.324x1 lm		
NAME: SF18-24V-2835-120-2700+5700-80	TYPE:硅胶	WEIGHT:
SPEC.:	DIM.: 16.5mm*16.5mm	SERIAL No.:2022011103
MFR.: OLYMPIA	SUR.:1*0.0165	Shielding Angle:

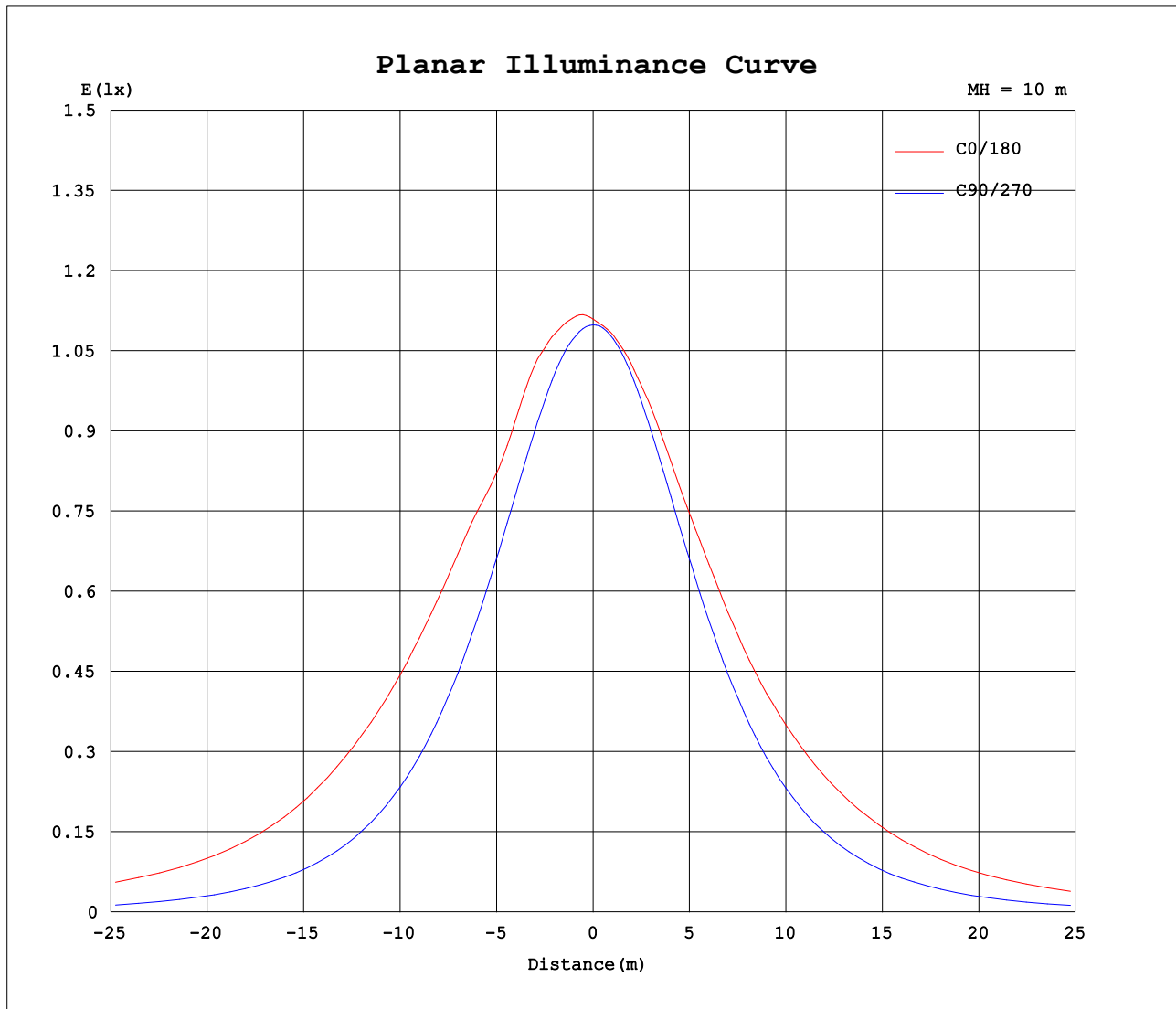
AvgL	cd/m2
L_0~180 (65) av	13693
L_0~180 (75) av	18600
L_0~180 (85) av	44671
L_90~270 (65) av	4437
L_90~270 (75) av	3158
L_90~270 (85) av	1237
L_45 (65) av	10081
L_45 (75) av	13096
L_45 (85) av	28500

Standard: GB/T 29293-2012

C Range: 0 - 360DEG  
C Interval: 30.0DEG  
Test Speed: HIGH  
Temperature:25.3DEG  
Operators:LPC  
Test Date:2022-01-11

γ Range: 0 - 180DEG  
γ Interval: 1.0DEG  
Test System:EVERFINE GO-2000B\_V1 SYSTEM V2.0.269  
Humidity:65.0%  
Test Distance:9.200m [K=1.0000]  
Remarks:

## Planar Illuminance Curve



C Range: 0 - 360DEG  
C Interval: 30.0DEG  
Test Speed: HIGH  
Temperature: 25.3DEG  
Operators: LPC  
Test Date: 2022-01-11

$\gamma$  Range: 0 - 180DEG  
 $\gamma$  Interval: 1.0DEG  
Test System: EVERFINE GO-2000B\_V1 SYSTEM V2.0.269  
Humidity: 65.0%  
Test Distance: 9.200m [K=1.0000]  
Remarks:

## LUMINOUS DISTRIBUTION INTENSITY DATA

Test:U:24.00V I:0.6618A P:15.88W PF:1.000 Freq:0Hz Lamp Flux:612.324x1 lm		
NAME: SF18-24V-2835-120-2700+5700-80	TYPE: 硅胶	WEIGHT:
SPEC.:	DIM.: 16.5mm*16.5mm	SERIAL No.:2022011103
MFR.: OLYMPIA	SUR.:1*0.0165	Shielding Angle:

Table--1

UNIT: cd

C (DEG) γ (DEG)	0	30	60	90	120	150	180	210	240	270	300	330							
0	111	111	110	110	110	110	111	111	110	110	110	110							
5	113	112	110	109	109	109	110	110	109	109	110	111							
10	114	113	110	107	107	108	109	108	108	107	110	112							
15	116	114	108	104	105	106	108	107	105	104	108	113							
20	116	114	105	99.6	101	104	106	105	102	99.5	105	114							
25	114	112	103	94.3	97.2	102	105	102	97.8	94.1	103	111							
30	118	109	99.8	88.3	92.7	99.1	104	99.7	93.5	87.9	100.0	109							
35	122	111	95.0	81.4	87.9	96.7	102	97.3	88.7	81.0	95.4	111							
40	124	112	89.1	74.0	82.4	93.3	100	94.0	83.2	73.5	89.8	112							
45	125	112	82.8	66.2	76.3	89.9	99.2	90.6	77.2	65.7	83.9	112							
50	126	111	76.9	57.9	69.6	87.3	97.2	88.1	70.6	57.2	78.0	111							
55	123	108	70.1	49.2	62.0	83.1	94.4	83.9	63.1	48.4	71.2	108							
60	117	104	63.8	40.5	55.2	78.2	88.3	78.7	56.1	39.5	64.8	104							
65	111	98.2	58.2	31.5	48.8	71.9	80.1	72.4	49.7	30.3	59.2	97.7							
70	104	90.9	52.5	22.6	42.1	64.1	71.4	64.4	43.0	21.2	53.4	90.5							
75	95.7	83.7	46.5	14.2	34.6	54.1	63.1	54.4	35.3	12.7	47.2	83.3							
80	87.4	75.0	40.3	6.85	26.8	45.4	54.8	45.5	27.4	5.51	40.8	74.6							
85	81.7	68.0	34.3	2.11	19.9	38.3	46.8	38.1	20.1	1.44	34.6	67.5							
90	81.0	64.5	30.5	1.67	16.4	34.9	42.2	34.3	15.9	1.21	30.5	63.8							
95	82.8	64.9	30.0	1.75	16.4	36.4	43.8	35.8	15.8	1.26	29.9	64.2							
100	79.5	61.1	29.2	1.95	15.8	35.2	44.3	34.7	15.5	1.51	29.2	60.7							
105	77.1	62.5	26.4	2.06	14.7	35.8	44.6	35.4	14.2	1.57	26.2	61.6							
110	74.8	62.3	25.8	2.11	15.1	34.6	43.0	34.0	14.6	1.59	25.5	61.5							
115	72.0	59.5	26.8	2.23	15.3	32.8	41.0	32.2	14.9	1.71	24.7	59.2							
120	67.5	54.6	22.9	2.39	14.5	30.5	38.4	30.0	14.1	1.87	21.7	54.1							
125	61.3	50.0	19.2	2.49	13.0	27.7	35.1	27.2	12.6	1.98	19.0	48.5							
130	54.7	41.4	16.0	2.59	11.6	24.8	31.0	24.5	11.2	2.14	15.7	38.1							
135	47.9	33.3	13.1	2.82	10.1	21.7	27.0	21.5	9.74	2.36	12.9	32.1							
140	40.4	25.5	10.7	3.01	8.63	18.5	23.1	18.0	8.47	2.54	10.4	23.3							
145	32.9	19.7	8.69	3.10	7.24	15.0	18.9	15.0	7.27	2.63	8.29	18.9							
150	25.8	14.8	6.93	3.26	6.14	12.3	15.3	12.3	6.09	2.78	6.58	14.2							
155	19.8	11.1	6.32	3.24	4.82	10.0	11.9	9.99	4.72	2.88	5.79	10.6							
160	14.0	8.15	5.46	3.27	3.81	7.59	8.81	7.43	3.71	3.01	5.05	7.73							
165	9.77	5.95	4.71	3.30	3.39	5.08	6.28	4.96	3.27	3.13	4.41	5.65							
170	4.65	4.66	3.98	3.34	3.20	3.61	3.41	3.67	3.10	3.21	3.77	4.46							
175	3.59	3.77	3.73	3.36	3.06	3.15	3.17	3.27	3.01	3.31	3.58	3.65							
180	3.34	3.42	3.46	3.37	3.41	3.37	3.28	3.42	3.45	3.36	3.43	3.38							

C Range: 0 - 360DEG  
C Interval: 30.0DEG  
Test Speed: HIGH  
Temperature:25.3DEG  
Operators:LPC  
Test Date:2022-01-11

γ Range: 0 - 180DEG  
γ Interval: 1.0DEG  
Test System:EVERFINE GO-2000B\_V1 SYSTEM V2.0.269  
Humidity:65.0%  
Test Distance:9.200m [K=1.0000]  
Remarks:

Photometric Data Table [cd]

G/C	0.0	30.0	60.0	90.0	120.0	150.0	180.0	210.0	240.0	270.0
0.0	111.0	110.5	110.0	109.8	109.9	109.8	111.0	110.5	110.0	109.8
3.0	112.2	111.5	110.4	109.6	109.3	109.2	110.1	109.9	109.6	109.7
6.0	113.0	112.3	110.3	108.9	108.6	108.7	109.7	109.4	108.9	109.0
9.0	113.9	112.5	110.2	107.9	107.8	107.9	109.1	108.6	108.0	107.9
12.0	115.0	112.9	109.5	106.2	106.3	107.0	108.4	107.8	106.7	106.2
15.0	116.1	113.7	108.1	104.0	104.5	106.0	107.8	106.7	105.0	104.0
18.0	116.6	114.1	106.5	101.6	102.5	105.1	107.1	105.8	103.0	101.5
21.0	115.5	114.0	104.6	98.63	100.1	103.6	106.1	104.2	100.7	98.50
24.0	114.5	112.4	103.1	95.49	97.94	102.3	105.0	102.9	98.59	95.25
27.0	115.0	110.5	101.6	91.97	95.53	100.5	104.2	101.2	96.15	91.88
30.0	117.9	109.3	99.82	88.27	92.75	99.11	103.7	99.70	93.48	87.91
33.0	120.7	109.8	97.13	84.29	89.89	97.83	102.8	98.44	90.70	83.93
36.0	122.4	111.7	93.86	79.98	86.93	96.14	101.7	96.73	87.70	79.56
39.0	123.8	112.3	90.33	75.49	83.48	93.94	100.5	94.59	84.36	75.06
42.0	125.0	112.4	86.46	70.97	79.93	91.90	99.72	92.57	80.88	70.53
45.0	125.4	112.4	82.80	66.25	76.34	89.93	99.20	90.58	77.20	65.65
48.0	125.9	111.8	79.30	61.19	72.36	88.51	98.14	89.18	73.29	60.57
51.0	125.7	110.7	75.67	56.21	68.06	86.56	96.69	87.31	69.16	55.38
54.0	124.2	109.0	71.47	50.96	63.45	84.12	95.04	84.93	64.49	50.27
57.0	121.1	106.9	67.42	45.68	59.22	81.14	92.39	81.77	60.12	44.71
60.0	117.3	104.3	63.79	40.51	55.19	78.16	88.29	78.67	56.07	39.48
63.0	113.4	100.7	60.51	34.99	51.21	74.64	83.44	75.06	52.22	33.89
66.0	109.6	96.87	57.13	29.73	47.48	70.37	78.38	70.74	48.34	28.37
69.0	105.5	92.34	53.68	24.29	43.52	65.66	73.19	66.12	44.46	23.16
72.0	100.8	87.96	50.15	19.09	39.23	59.94	67.88	60.26	40.00	17.63
75.0	95.74	83.66	46.46	14.24	34.60	54.09	63.13	54.38	35.30	12.73
78.0	90.37	78.41	42.73	9.763	30.02	48.56	58.09	48.94	30.62	8.269
81.0	86.02	73.35	39.04	5.499	25.38	43.84	53.11	43.91	25.93	4.311
84.0	82.50	69.17	35.45	2.629	21.22	39.62	48.37	39.41	21.46	1.613
87.0	80.85	66.04	32.22	1.788	17.77	36.20	44.45	35.91	17.75	1.247
90.0	81.02	64.46	30.51	1.674	16.39	34.88	42.19	34.31	15.86	1.213
93.0	82.28	64.33	30.25	1.719	16.42	35.75	43.16	35.18	15.88	1.238
96.0	82.68	65.23	30.00	1.769	16.38	36.61	44.14	36.02	15.80	1.256
99.0	79.93	60.15	29.66	1.865	16.22	34.66	43.94	34.01	15.70	1.442
102.0	78.48	62.20	26.92	2.026	14.62	35.81	44.75	35.33	14.06	1.523
105.0	77.10	62.53	26.36	2.061	14.75	35.79	44.55	35.43	14.24	1.571
108.0	75.87	62.46	25.57	2.091	14.90	35.20	43.74	34.72	14.44	1.579
111.0	74.23	62.03	26.45	2.126	15.22	34.23	42.66	33.64	14.74	1.588
114.0	72.61	60.46	26.52	2.202	15.36	33.14	41.43	32.61	14.95	1.668
117.0	70.43	57.56	25.36	2.302	15.04	31.92	40.06	31.43	14.61	1.774
120.0	67.52	54.62	22.88	2.387	14.48	30.51	38.37	29.96	14.08	1.869
123.0	63.64	51.95	20.62	2.448	13.79	28.84	36.47	28.39	13.11	1.940
126.0	60.11	49.06	18.45	2.503	12.52	27.09	34.34	26.70	12.30	2.005
129.0	56.06	43.67	16.57	2.563	11.84	25.40	31.90	25.05	11.46	2.090
132.0	51.90	37.42	14.78	2.684	11.05	23.61	29.36	23.32	10.64	2.226
135.0	47.88	33.29	13.15	2.825	10.09	21.74	26.99	21.50	9.742	2.362
138.0	43.36	28.00	11.59	2.945	9.240	19.88	24.71	19.15	9.008	2.482
141.0	38.95	24.38	10.27	3.026	8.356	17.70	22.07	17.36	8.219	2.568
144.0	34.42	20.73	9.051	3.071	7.486	15.56	19.60	15.48	7.521	2.623
147.0	30.04	17.72	7.975	3.177	6.872	13.88	17.41	13.75	6.858	2.689
150.0	25.84	14.85	6.934	3.262	6.139	12.27	15.30	12.25	6.089	2.784
153.0	22.10	12.52	6.570	3.249	5.325	10.88	13.24	10.79	5.334	2.844
156.0	18.55	10.40	6.178	3.236	4.571	9.565	11.34	9.593	4.420	2.915
159.0	14.82	8.630	5.641	3.252	3.982	8.147	9.461	7.991	3.873	2.985
162.0	12.38	7.098	5.173	3.277	3.560	6.463	7.418	6.443	3.442	3.075
165.0	9.770	5.948	4.706	3.297	3.393	5.083	6.282	4.960	3.272	3.131
168.0	5.257	5.130	4.188	3.322	3.999	3.698	3.987	3.987	3.181	3.176
171.0	4.370	4.400	3.911	3.342	3.167	3.477	3.336	3.549	3.070	3.241
174.0	3.671	3.839	3.755	3.357	3.096	3.206	3.201	3.318	3.025	3.277
177.0	3.513	3.704	3.699	3.372	2.976	3.060	3.131	3.217	2.970	3.342
180.0	3.337	3.423	3.458	3.372	3.412	3.372	3.282	3.423	3.448	3.357
G/C	300.0	330.0								
0.0	109.9	109.8								
3.0	110.3	110.9								
6.0	110.4	111.6								
9.0	110.2	111.9								
12.0	109.4	112.3								
15.0	108.1	112.9								
18.0	106.4	113.3								
21.0	104.5	113.3								
24.0	103.0	111.6								
27.0	101.6	109.8								
30.0	99.95	108.7								

C Range: 0 - 360DEG  
 C Interval: 30.0DEG  
 Test Speed: HIGH  
 Temperature: 25.3DEG  
 Operators: LPC  
 Test Date: 2022-01-11

γ Range: 0 - 180DEG  
 γ Interval: 1.0DEG  
 Test System: EVERFINE GO-2000B\_V1 SYSTEM V2.0.269  
 Humidity: 65.0%  
 Test Distance: 9.200m [K=1.0000]  
 Remarks:

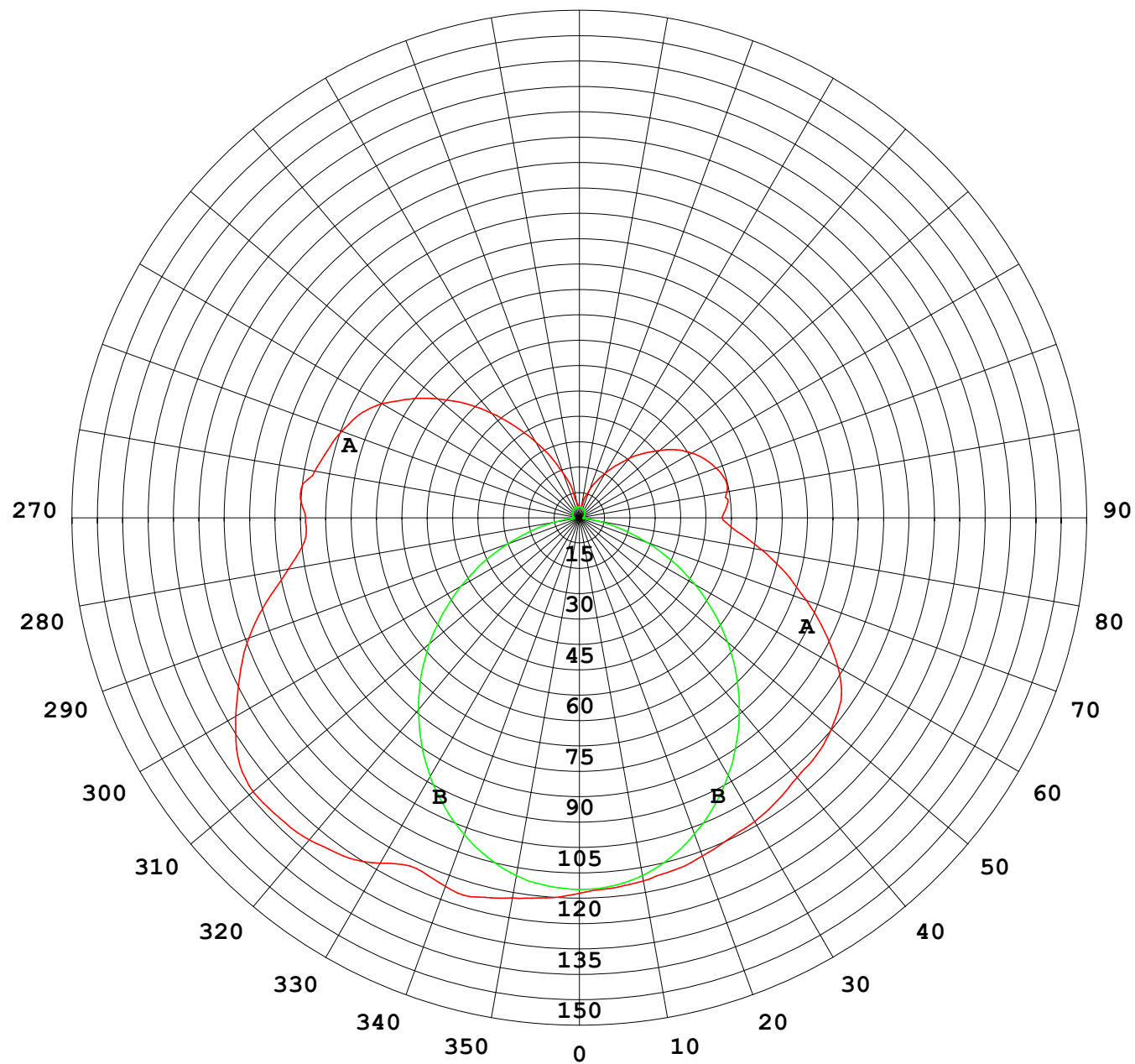
## Photometric Data Table [cd]

33.0	97.43	109.2
36.0	94.24	111.0
39.0	90.97	111.6
42.0	87.54	111.8
45.0	83.87	111.8
48.0	80.41	111.3
51.0	76.72	110.2
54.0	72.60	108.6
57.0	68.50	106.4
60.0	64.75	103.7
63.0	61.40	100.3
66.0	58.12	96.45
69.0	54.64	91.94
72.0	51.03	87.71
75.0	47.22	83.30
78.0	43.43	78.02
81.0	39.50	72.97
84.0	35.78	68.67
87.0	32.46	65.41
90.0	30.51	63.78
93.0	30.12	63.58
96.0	29.82	64.48
99.0	29.50	59.85
102.0	26.88	61.52
105.0	26.20	61.58
108.0	25.77	61.63
111.0	25.46	61.34
114.0	24.54	60.06
117.0	23.41	57.40
120.0	21.67	54.14
123.0	19.96	50.68
126.0	18.34	47.40
129.0	16.25	39.71
132.0	14.59	37.25
135.0	12.86	32.06
138.0	11.31	26.04
141.0	9.905	22.18
144.0	8.670	19.91
147.0	7.515	16.96
150.0	6.580	14.17
153.0	6.039	12.02
156.0	5.642	9.886
159.0	5.185	8.216
162.0	4.798	6.730
165.0	4.406	5.652
168.0	3.944	4.862
171.0	3.723	4.218
174.0	3.593	3.715
177.0	3.583	3.604
180.0	3.433	3.377

C Range: 0 - 360DEG  
C Interval: 30.0DEG  
Test Speed: HIGH  
Temperature: 25.3DEG  
Operators: LPC  
Test Date: 2022-01-11

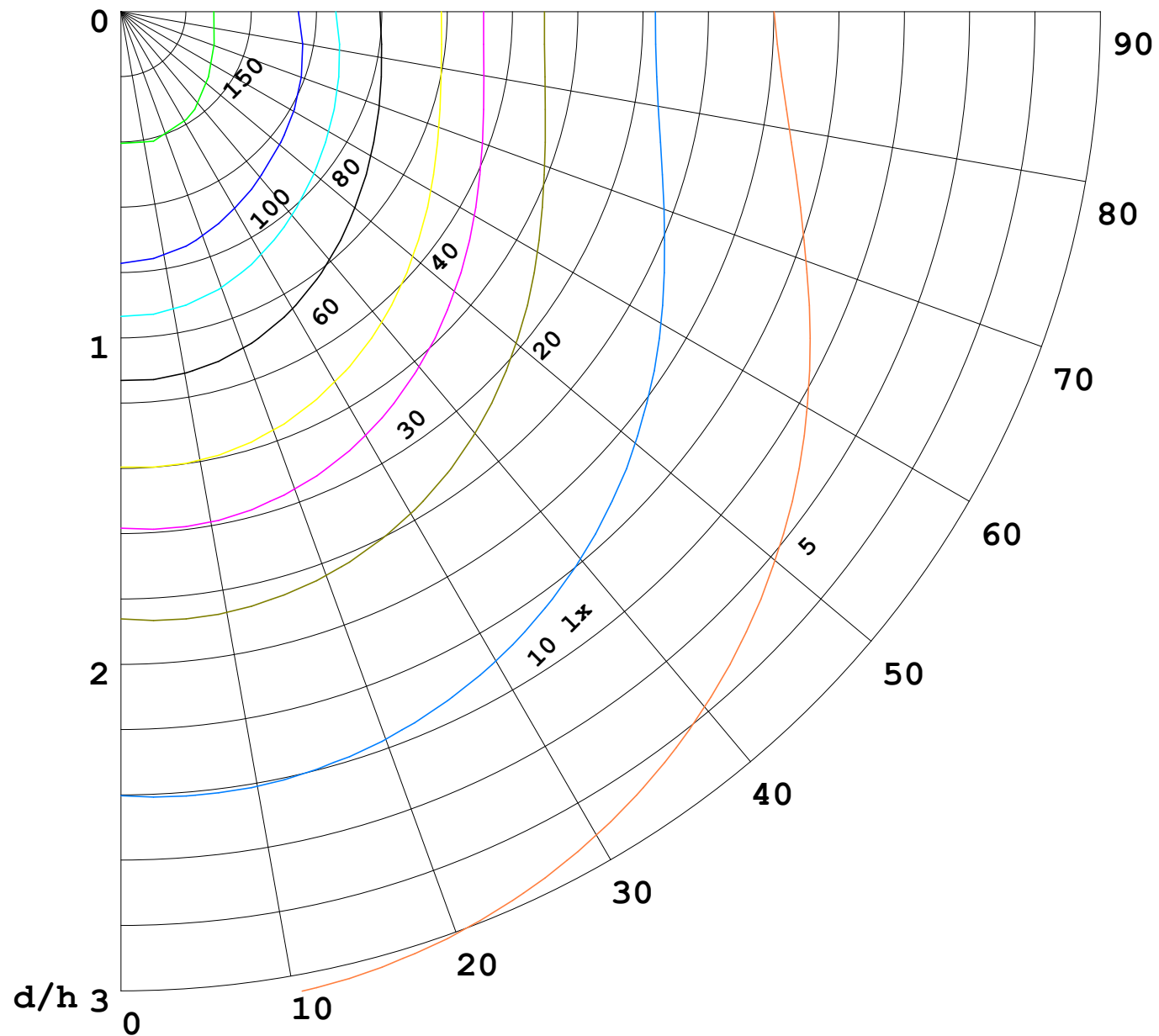
γ Range: 0 - 180DEG  
γ Interval: 1.0DEG  
Test System: EVERFINE GO-2000B\_V1 SYSTEM V2.0.269  
Humidity: 65.0%  
Test Distance: 9.200m [K=1.0000]  
Remarks:

I (cd)



1000 lm

$\kappa = 1$



F = 5000 lm  
 K = 0.7  
 Hcc = 0.0 m  
 Hfc = 0.0 m  
 Eave = 100 lx

	Pcc	Pw	Pfc
—	70	50	30
—	50	30	20

