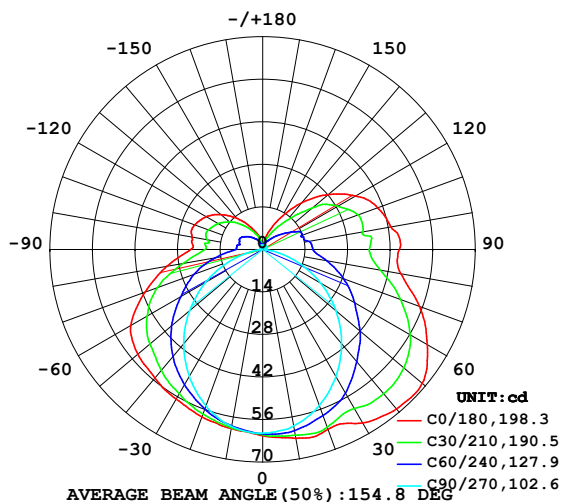


LUMINAIRE PHOTOMETRIC TEST REPORT

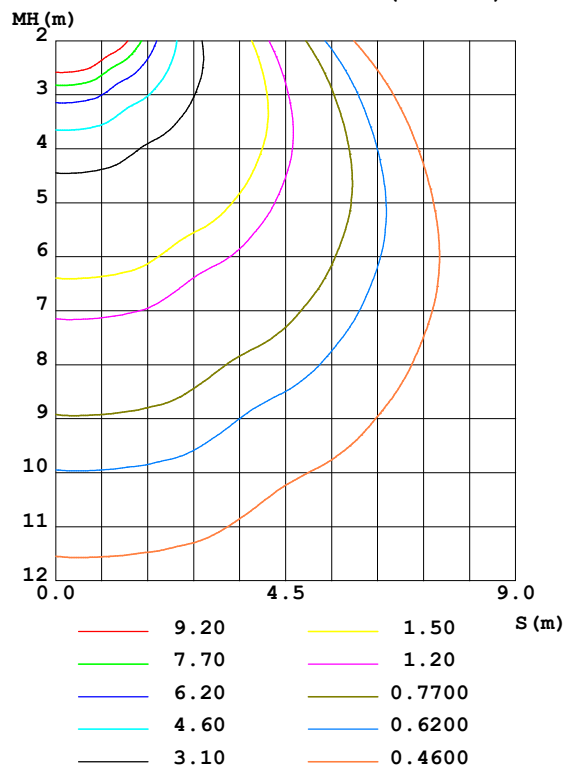
Test:U:24.00V I:0.3275A P:7.860W PF:1.000 Freq:0Hz Lamp Flux:334.515x1 lm		
NAME: SF18-24V-2835-120-2700+5700-80-2700	TYPE: 硅胶	WEIGHT:
SPEC.:	DIM.: 16.5mm*16.5mm	SERIAL No.:2022011101
MFR.: OLYMPIA	SUR.:1*0.0165	Shielding Angle:

DATA OF LAMP		PHOTOMETRIC DATA Eff: 42.56 lm/W			
MODEL	2835	I _{max} (cd)	69.02	S/MH (C0/180)	1.42
NOMINAL POWER(W)	7.5	LOR(%)	100.0	S/MH (C90/270)	1.20
RATED VOLTAGE(V)	24	TOTAL FLUX(lm)	334.52	η UP,DN(C0-180)	13.8,38.2
NOMINAL FLUX(lm)	334.515	CIE CLASS	SEMI-D.	η UP,DN(C180-360)	11.7,36.4
LAMPS INSIDE	1	η up (%)	25.4	CIBSE SHR NOM	1.50
TEST VOLTAGE(V)	24.0	η down (%)	74.6	CIBSE SHR MAX	1.55

LUMINOUS INTENSITY DISTRIBUTION DIAGRAM



C0 PLANE ISOLUX DIAGRAM (UNIT:lx)



C Range: 0 - 360DEG
C Interval: 30.0DEG
Test Speed: HIGH
Temperature: 25.3DEG
Operators: LPC
Test Date: 2022-01-11

γ Range: 0 - 180DEG
γ Interval: 1.0DEG
Test System: EVERFINE GO-2000B_V1 SYSTEM V2.0.269
Humidity: 65.0%
Test Distance: 9.200m [K=1.0000]
Remarks:

ZONAL FLUX DIAGRAM

ZONAL FLUX DIAGRAM:

γ	C0	C45	C90	C135	C180	C225	C270	C315	γ	Φ zone	Φ total	%lum, lamp
10	63.09	61.29	59.00	58.69	59.85	59.25	59.16	60.92	0- 10	5.766	5.766	1.72,1.72
20	63.03	60.17	54.62	56.11	58.66	56.78	54.77	59.91	10- 20	16.78	22.54	6.74,6.74
30	65.89	57.48	48.26	52.46	56.92	53.17	48.32	57.34	20- 30	26.10	48.65	14.5,14.5
40	68.54	55.05	40.43	48.19	55.21	48.97	40.46	55.19	30- 40	33.55	82.19	24.6,24.6
50	68.55	51.26	31.53	43.03	53.67	43.82	31.40	51.56	40- 50	38.22	120.4	36,36
60	62.50	45.49	21.99	36.80	50.08	37.56	21.66	45.66	50- 60	39.38	159.8	47.8,47.8
70	54.90	38.36	12.18	29.85	41.28	30.50	11.66	38.60	60- 70	36.53	196.3	58.7,58.7
80	46.20	30.42	3.613	20.71	31.97	21.23	3.056	30.49	70- 80	30.13	226.5	67.7,67.7
90	45.00	25.85	0.8996	13.90	23.79	13.90	0.6278	25.61	80- 90	23.00	249.5	74.6,74.6
100	42.89	24.52	1.056	13.68	23.64	13.53	0.7786	24.37	90-100	20.60	270.1	80.7,80.7
110	40.29	23.53	1.106	13.72	23.80	13.57	0.8113	23.43	100-110	19.21	289.3	86.5,86.5
120	35.25	20.09	1.191	12.69	21.56	12.58	0.9297	19.99	110-120	16.90	306.2	91.5,91.5
130	28.09	14.50	1.292	10.46	17.94	10.41	1.110	14.61	120-130	12.78	318.9	95.3,95.3
140	20.08	8.826	1.362	8.002	13.55	7.899	1.211	8.256	130-140	8.116	327.1	97.8,97.8
150	12.43	5.201	1.538	5.527	9.081	5.646	1.382	4.911	140-150	4.424	331.5	99.1,99.1
160	6.523	3.168	1.563	3.560	5.591	3.629	1.442	2.923	150-160	2.095	333.6	99.7,99.7
170	2.158	2.050	1.567	1.947	1.964	2.006	1.488	1.928	160-170	0.7658	334.3	99.9,99.9
180	1.674	1.643	1.568	1.596	1.704	1.674	1.518	1.588	170-180	0.1721	334.5	100,100
DEG	LUMINOUS INTENSITY:cd									UNIT:lm		

Conical surface Flux(90deg): 100.91 lm

%lum = 30.2%

%lamp = 30.2%

Conical surface Flux(120deg): 159.79 lm

%lum = 47.8%

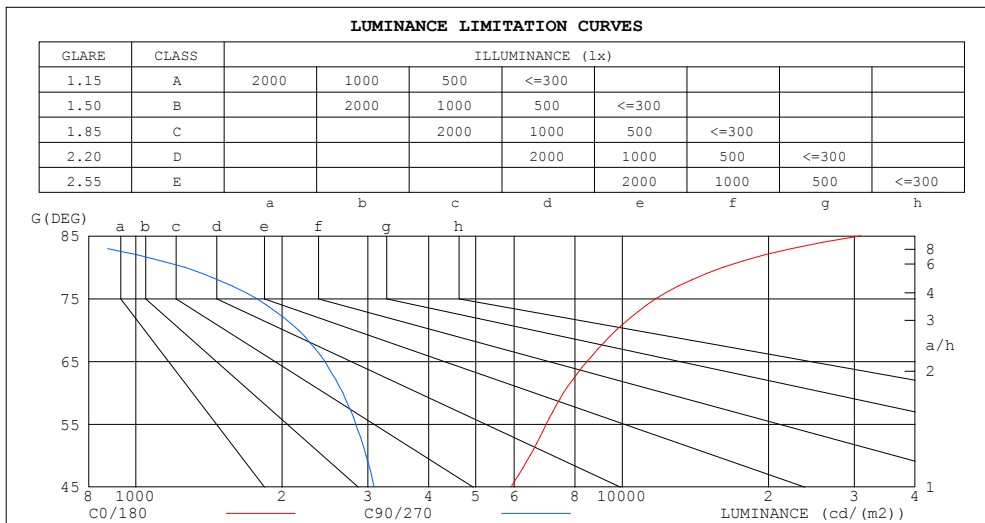
%lamp = 47.8%

C Range: 0 - 360DEG
 C Interval: 30.0DEG
 Test Speed: HIGH
 Temperature:25.3DEG
 Operators:LPC
 Test Date:2022-01-11

γ Range: 0 - 180DEG
 γ Interval: 1.0DEG
 Test System:EVERFINE GO-2000B_V1 SYSTEM V2.0.269
 Humidity:65.0%
 Test Distance:9.200m [K=1.0000]
 Remarks:

LUMINANCE LIMITATION CURVES

Test:U:24.00V I:0.3275A P:7.860W PF:1.000 Freq:0Hz Lamp Flux:334.515x1 lm		
NAME: SF18-24V-2835-120-2700+5700-80-2700	TYPE: 硅胶	WEIGHT:
SPEC.:	DIM.: 16.5mm*16.5mm	SERIAL No.:2022011101
MFR.: OLYMPIA	SUR.:1*0.0165	Shielding Angle:



LUMINANCE cd/(m2)		
G (DEG)	C0/180	C90/270
85	30912	751
80	16126	1261
75	11731	1774
70	9727	2159
65	8468	2448
60	7576	2666
55	6982	2832
50	6464	2973
45	5909	3091

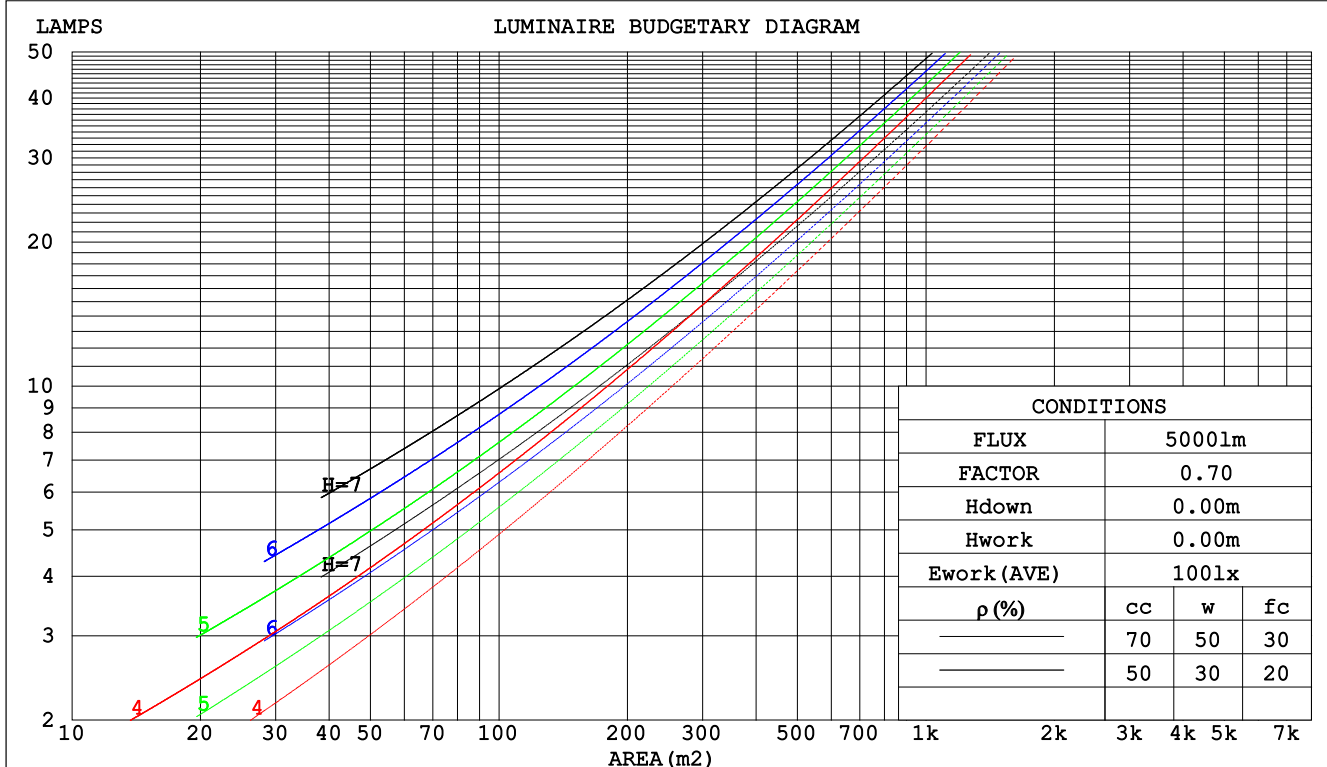
C Range: 0 - 360DEG
C Interval: 30.0DEG
Test Speed: HIGH
Temperature:25.3DEG
Operators:LPC
Test Date:2022-01-11

γ Range: 0 - 180DEG
 γ Interval: 1.0DEG
Test System:EVERFINE GO-2000B_V1 SYSTEM V2.0.269
Humidity:65.0%
Test Distance:9.200m [K=1.0000]
Remarks:

CU AND LUMINAIRE BUDGETARY ESTIMATE DIAGRAM

Test:U:24.00V I:0.3275A P:7.860W PF:1.000 Freq:0Hz Lamp Flux:334.515x1 lm		
NAME: SF18-24V-2835-120-2700+5700-80-2700	TYPE: 硅胶	WEIGHT:
SPEC.:	DIM.: 16.5mm*16.5mm	SERIAL No.:2022011101
MFR.: OLYMPIA	SUR.:1*0.0165	Shielding Angle:

pcc	80%			70%			50%			30%			10%			0
pw	50%	30%	10%	50%	30%	10%	50%	30%	10%	50%	30%	10%	50%	30%	10%	0
pfc	20%			20%			20%			20%			20%			0
RCR	RCR:Room Cavity Ratio						Coefficients of Utilization(CU)									
0.0	1.13	1.13	1.13	1.07	1.07	1.07	.97	.97	.97	.87	.87	.87	.79	.79	.79	.75
1.0	.94	.89	.84	.89	.85	.80	.80	.77	.73	.72	.69	.66	.65	.62	.60	.56
2.0	.80	.73	.66	.76	.69	.63	.69	.63	.58	.61	.57	.53	.55	.51	.48	.44
3.0	.70	.61	.54	.66	.58	.51	.59	.53	.47	.53	.48	.43	.47	.43	.39	.36
4.0	.61	.52	.44	.58	.49	.43	.52	.45	.39	.47	.41	.36	.42	.37	.33	.30
5.0	.54	.45	.38	.51	.43	.36	.46	.39	.33	.42	.36	.31	.37	.32	.28	.25
6.0	.48	.39	.32	.46	.37	.31	.42	.34	.29	.37	.31	.27	.34	.28	.24	.22
7.0	.43	.34	.28	.41	.33	.27	.38	.30	.25	.34	.28	.23	.30	.25	.21	.19
8.0	.39	.31	.25	.38	.30	.24	.34	.27	.22	.31	.25	.21	.28	.23	.19	.17
9.0	.36	.28	.22	.34	.27	.21	.31	.25	.20	.28	.23	.18	.26	.21	.17	.15
10.0	.33	.25	.20	.32	.24	.19	.29	.22	.18	.26	.21	.17	.24	.19	.15	.13



C Range: 0 - 360DEG
C Interval: 30.0DEG
Test Speed: HIGH
Temperature:25.3DEG
Operators:LPC
Test Date:2022-01-11

γ Range: 0 - 180DEG
γ Interval: 1.0DEG
Test System:EVERFINE GO-2000B_V1 SYSTEM V2.0.269
Humidity:65.0%
Test Distance:9.200m [K=1.0000]
Remarks:

WEC AND CCEC

Test:U:24.00V I:0.3275A P:7.860W PF:1.000 Freq:0Hz Lamp Flux:334.515x1 lm		
NAME: SF18-24V-2835-120-2700+5700-80-2700	TYPE: 硅胶	WEIGHT:
SPEC.:	DIM.: 16.5mm*16.5mm	SERIAL No.:2022011101
MFR.: OLYMPIA	SUR.:1*0.0165	Shielding Angle:

pcc	80%			70%			50%			30%			10%			0	
pw	50%	30%	10%	50%	30%	10%	50%	30%	10%	50%	30%	10%	50%	30%	10%	0	
pfc	20%			20%			20%			20%			20%			0	
RCR	RCR:Room Cavity Ratio						Wall Exitance Coeffcients(WEC)										
0.0																	
1.0	.379	.215	.068	.364	.208	.066	.336	.193	.062	.310	.179	.057	.286	.166	.054		
2.0	.329	.180	.055	.316	.174	.054	.290	.161	.050	.267	.150	.047	.245	.139	.044		
3.0	.293	.156	.047	.281	.150	.045	.258	.140	.042	.236	.129	.040	.216	.120	.037		
4.0	.264	.137	.040	.253	.132	.039	.232	.123	.037	.212	.114	.034	.194	.106	.032		
5.0	.240	.122	.035	.230	.118	.034	.211	.110	.032	.193	.102	.030	.176	.094	.028		
6.0	.220	.110	.032	.211	.106	.031	.193	.099	.029	.177	.092	.027	.161	.085	.025		
7.0	.203	.100	.028	.195	.097	.028	.178	.090	.026	.163	.084	.024	.149	.077	.023		
8.0	.188	.092	.026	.180	.089	.025	.166	.083	.024	.152	.077	.022	.138	.071	.021		
9.0	.175	.085	.024	.168	.082	.023	.154	.076	.022	.142	.071	.020	.129	.066	.019		
10.0	.164	.079	.022	.158	.076	.021	.145	.071	.020	.133	.066	.019	.121	.061	.018		

pcc	80%			70%			50%			30%			10%			0	
pw	50%	30%	10%	50%	30%	10%	50%	30%	10%	50%	30%	10%	50%	30%	10%	0	
pfc	20%			20%			20%			20%			20%			0	
RCR	RCR:Room Cavity Ratio						Ceiling Cavity Exitance Coefficients(CCEC)										
0.0	.384	.384	.384	.328	.328	.328	.224	.224	.224	.129	.129	.129	.041	.041	.041		
1.0	.380	.351	.324	.325	.301	.279	.223	.207	.193	.128	.120	.112	.041	.039	.036		
2.0	.374	.328	.290	.320	.283	.251	.219	.196	.175	.127	.114	.103	.041	.037	.033		
3.0	.367	.312	.269	.314	.269	.233	.216	.187	.163	.125	.109	.096	.040	.035	.032		
4.0	.359	.300	.255	.308	.259	.221	.212	.181	.156	.123	.106	.092	.039	.034	.030		
5.0	.352	.290	.245	.302	.251	.213	.208	.175	.150	.120	.103	.089	.039	.034	.029		
6.0	.344	.282	.238	.296	.245	.207	.204	.171	.147	.118	.101	.087	.038	.033	.029		
7.0	.337	.276	.233	.290	.239	.203	.200	.168	.144	.116	.099	.086	.038	.032	.028		
8.0	.331	.271	.229	.285	.235	.200	.197	.165	.142	.115	.097	.084	.037	.032	.028		
9.0	.325	.266	.226	.280	.231	.197	.194	.162	.140	.113	.096	.084	.037	.031	.028		
10.0	.319	.262	.224	.275	.227	.195	.191	.160	.139	.111	.095	.083	.036	.031	.027		

C Range: 0 - 360DEG
 C Interval: 30.0DEG
 Test Speed: HIGH
 Temperature:25.3DEG
 Operators:LPC
 Test Date:2022-01-11

γ Range: 0 - 180DEG
 γ Interval: 1.0DEG
 Test System:EVERFINE GO-2000B_V1 SYSTEM V2.0.269
 Humidity:65.0%
 Test Distance:9.200m [K=1.0000]
 Remarks:

UGR(Unified Glare Rating) Table

Test:U:24.00V I:0.3275A P:7.860W PF:1.000 Freq:0Hz Lamp Flux:334.515x1 lm										
NAME: SF18-24V-2835-120-2700+5700-80-2700					TYPE: 硅胶			WEIGHT:		
SPEC.:					DIM.: 16.5mm*16.5mm			SERIAL No.:2022011101		
MFR.: OLYMPIA					SUR.:1*0.0165			Shielding Angle:		
ceiling/cavity	0.7	0.7	0.5	0.5	0.3	0.7	0.7	0.5	0.5	0.3
walls	0.5	0.3	0.5	0.3	0.3	0.5	0.3	0.5	0.3	0.3
working plane	0.2	0.2	0.2	0.2	0.2	0.2	0.2	0.2	0.2	0.2
Room dimensions	Viewed crosswise					Viewed endwise				
x = 2H y = 2H	23.0	24.2	23.6	24.9	25.6	18.8	20.1	19.4	20.7	21.4
3H	25.7	26.9	26.4	27.5	28.3	20.2	21.4	20.8	22.0	22.8
4H	27.2	28.3	27.8	29.0	29.7	20.7	21.8	21.4	22.5	23.3
6H	28.8	29.9	29.5	30.5	31.3	21.0	22.1	21.7	22.8	23.5
8H	29.7	30.7	30.4	31.4	32.2	21.1	22.1	21.8	22.8	23.6
12H	30.8	31.8	31.5	32.5	33.3	21.1	22.1	21.8	22.8	23.6
4H 2H	23.4	24.5	24.0	25.2	25.9	20.6	21.7	21.2	22.3	23.1
3H	26.5	27.4	27.1	28.1	28.9	22.2	23.2	22.9	23.9	24.7
4H	28.1	29.0	28.8	29.7	30.6	23.0	23.9	23.7	24.6	25.4
6H	30.0	30.8	30.7	31.5	32.4	23.5	24.3	24.2	25.1	25.9
8H	31.0	31.7	31.7	32.5	33.4	23.7	24.4	24.4	25.2	26.1
12H	32.2	32.9	33.0	33.7	34.6	23.8	24.5	24.5	25.2	26.1
8H 4H	28.4	29.2	29.1	29.9	30.8	24.5	25.2	25.2	26.0	26.9
6H	30.6	31.2	31.3	32.0	32.9	25.5	26.1	26.2	26.9	27.8
8H	31.8	32.4	32.6	33.2	34.1	25.9	26.5	26.7	27.3	28.2
12H	33.3	33.8	34.1	34.6	35.6	26.2	26.7	27.0	27.5	28.5
12H 4H	28.4	29.1	29.2	29.9	30.8	25.0	25.6	25.7	26.4	27.3
6H	30.6	31.2	31.4	32.0	33.0	26.2	26.8	27.0	27.6	28.5
8H	32.0	32.5	32.8	33.3	34.3	26.9	27.4	27.7	28.2	29.1
Variations with the observer position at spacings:										
S = 1.0H	+ 0.1 / - 0.1					+ 0.1 / - 0.1				
1.5H	+ 0.2 / - 0.3					+ 0.2 / - 0.3				
2.0H	+ 0.2 / - 0.3					+ 0.2 / - 0.4				

CIE Pub.117, 334.5 lm Total Lamp Luminous Flux Correct (8log(F/F0) = -3.8)

C Range: 0 - 360DEG
 C Interval: 30.0DEG
 Test Speed: HIGH
 Temperature:25.3DEG
 Operators:LPC
 Test Date:2022-01-11

γ Range: 0 - 180DEG
 γ Interval: 1.0DEG
 Test System:EVERFINE GO-2000B_V1 SYSTEM V2.0.269
 Humidity:65.0%
 Test Distance:9.200m [K=1.0000]
 Remarks:

UTILIZATION FACTORS TABLE

Test:U:24.00V I:0.3275A P:7.860W PF:1.000 Freq:0Hz Lamp Flux:334.515x1 lm		
NAME: SF18-24V-2835-120-2700+5700-80-2700	TYPE: 硅胶	WEIGHT:
SPEC.:	DIM.: 16.5mm*16.5mm	SERIAL No.:2022011101
MFR.: OLYMPIA	SUR.:1*0.0165	Shielding Angle:

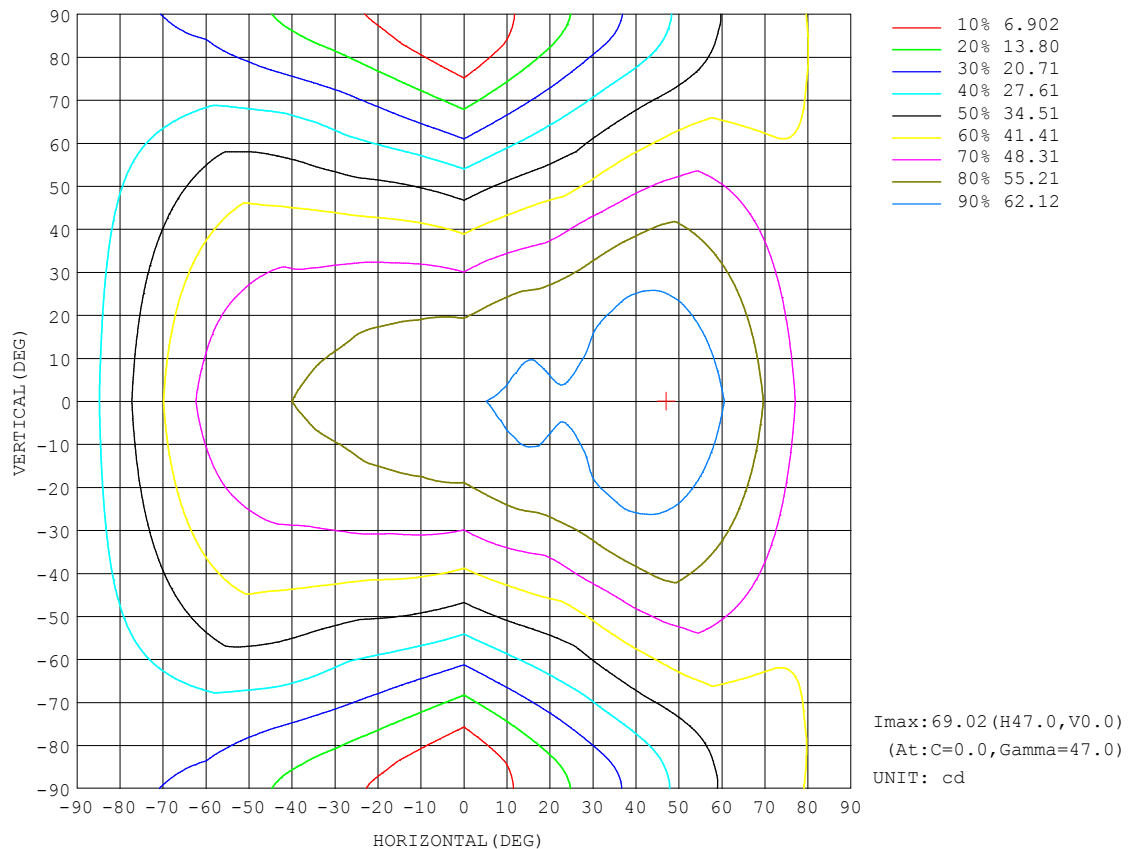
REFLECTANCE										
Ceiling	0.8	0.8	0.8	0.7	0.7	0.7	0.5	0.5	0.5	0
Walls	0.7	0.5	0.3	0.7	0.5	0.3	0.7	0.5	0.3	0
Working plane	0.2	0.2	0.2	0.2	0.2	0.2	0.2	0.2	0.2	0
ROOM INDEX	UTILIZATION FACTORS (PERCENT) $k(RI) \times RCR = 5$									
$k = 0.60$	45	33	25	44	32	25	41	31	24	18
0.80	54	41	33	52	40	32	49	38	31	23
1.00	62	49	40	60	47	40	55	47	38	29
1.25	69	56	47	66	54	46	61	51	44	34
1.50	74	62	53	71	60	52	65	56	49	37
2.00	82	70	62	78	68	60	71	63	56	43
2.50	86	76	68	82	73	66	75	67	61	47
3.00	90	81	73	86	77	70	78	71	66	50
4.00	95	87	80	90	83	77	82	76	71	55
5.00	98	91	85	93	87	82	84	79	75	58
ROOM INDEX	UF(total)									Direct
According to DIN EN 13032-2 2004			Suspended					SHRNM = 1.25		

C Range: 0 - 360DEG
 C Interval: 30.0DEG
 Test Speed: HIGH
 Temperature:25.3DEG
 Operators:LPC
 Test Date:2022-01-11

γ Range: 0 - 180DEG
 γ Interval: 1.0DEG
 Test System:EVERFINE GO-2000B_V1 SYSTEM V2.0.269
 Humidity:65.0%
 Test Distance:9.200m [K=1.0000]
 Remarks:

ISOCANDELA DIAGRAM

Test:U:24.00V I:0.3275A P:7.860W PF:1.000 Freq:0Hz Lamp Flux:334.515x1 lm		
NAME: SF18-24V-2835-120-2700+5700-80-2700	TYPE:硅胶	WEIGHT:
SPEC.:	DIM.: 16.5mm*16.5mm	SERIAL No.:2022011101
MFR.: OLYMPIA	SUR.:1*0.0165	Shielding Angle:



C Range: 0 - 360DEG
C Interval: 30.0DEG
Test Speed: HIGH
Temperature:25.3DEG
Operators:LPC
Test Date:2022-01-11

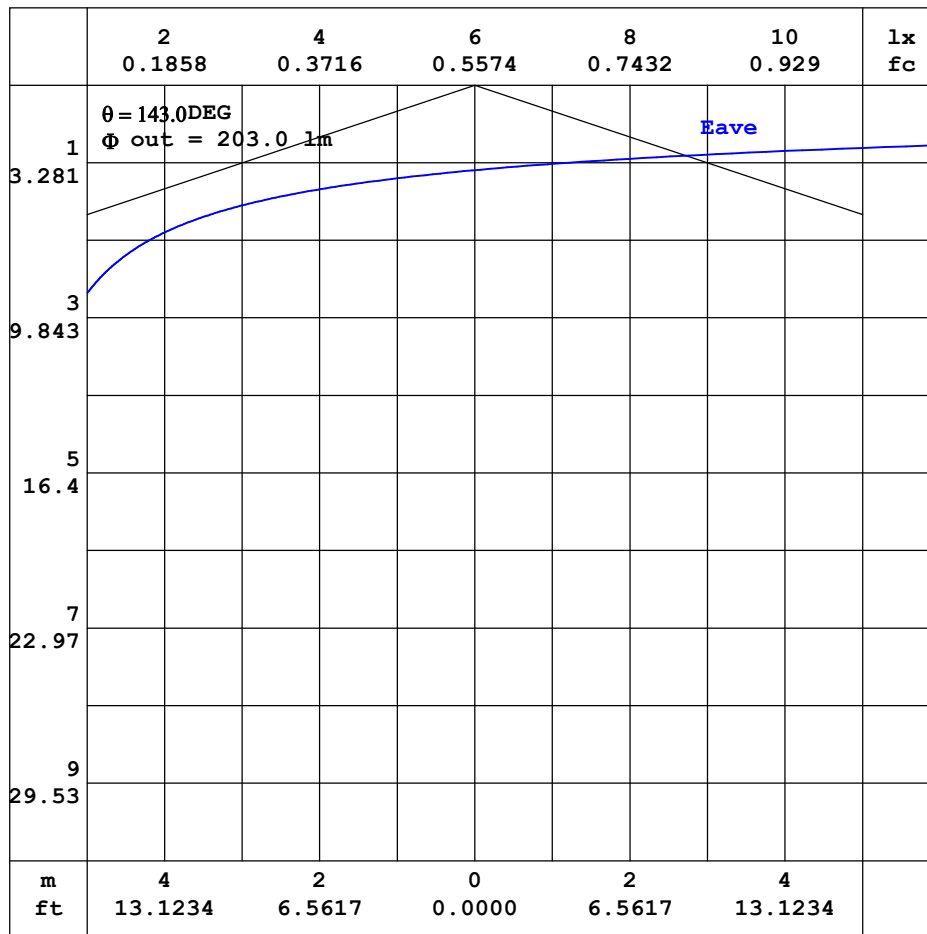
```

Range: 0 - 180DEG
Interval: 1.0DEG
Test System:EVERFINE GO-2000B_V1 SYSTEM V2.0.269
Humidity:65.0%
Test Distance:9.200m [K=1.0000]
Remarks:

```


AAI CURVES

Test:U:24.00V I:0.3275A P:7.860W PF:1.000 Freq:0Hz Lamp Flux:334.515x1 lm		
NAME: SF18-24V-2835-120-2700+5700-80-2700	TYPE: 硅胶	WEIGHT:
SPEC.:	DIM.: 16.5mm*16.5mm	SERIAL No.:2022011101
MFR.: OLYMPIA	SUR.:1*0.0165	Shielding Angle:



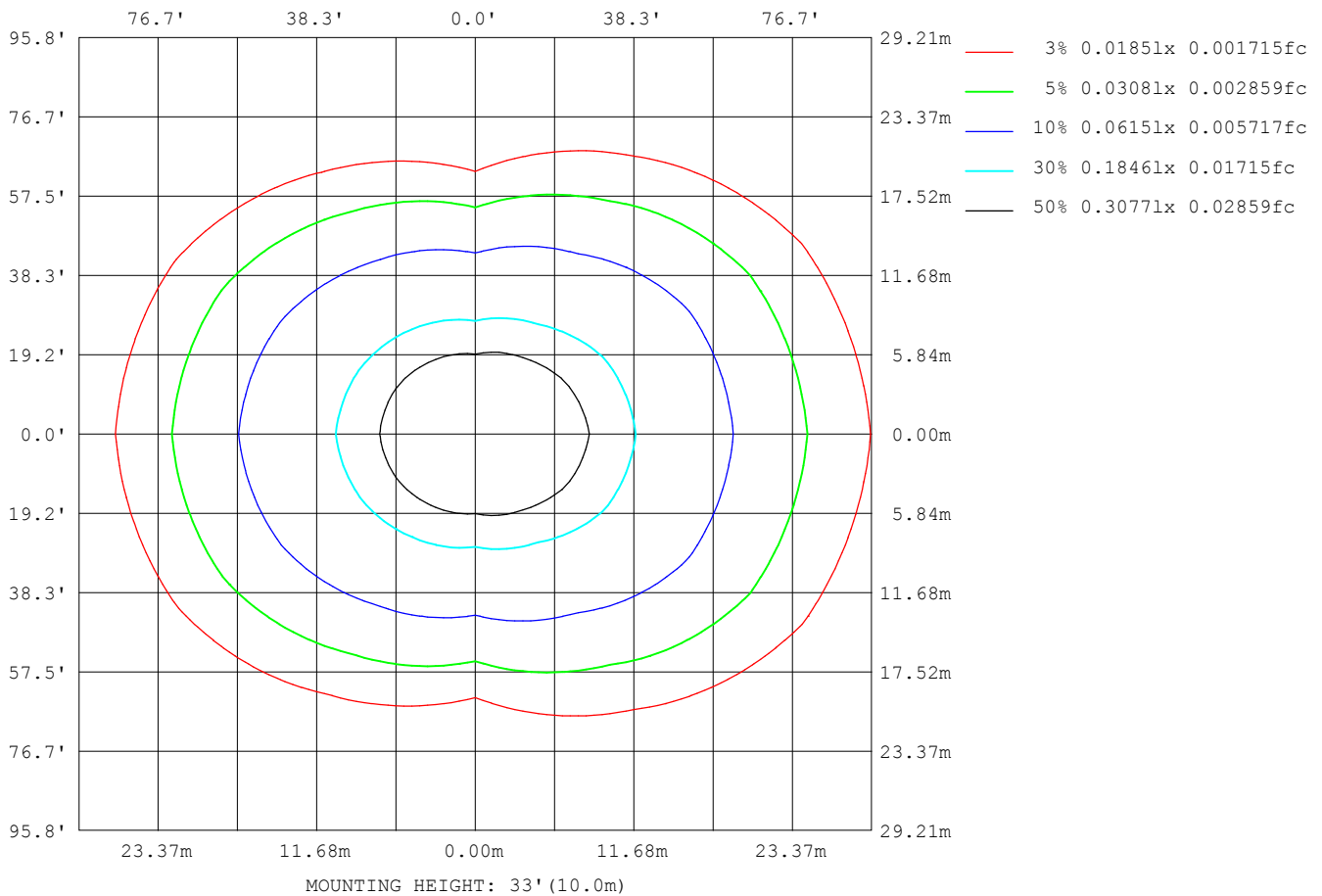
Note: The Curves indicate the illuminated area and the average illumination when the luminaire is at different distance.

C Range: 0 - 360DEG
C Interval: 30.0DEG
Test Speed: HIGH
Temperature: 25.3DEG
Operators: LPC
Test Date: 2022-01-11

γ Range: 0 - 180DEG
 γ Interval: 1.0DEG
Test System: EVERFINE GO-2000B_V1 SYSTEM V2.0.269
Humidity: 65.0%
Test Distance: 9.200m [K=1.0000]
Remarks:

ISOLUX DIAGRAM

Test:U:24.00V I:0.3275A P:7.860W PF:1.000 Freq:0Hz Lamp Flux:334.515x1 lm		
NAME: SF18-24V-2835-120-2700+5700-80-2700	TYPE: 硅胶	WEIGHT:
SPEC.:	DIM.: 16.5mm*16.5mm	SERIAL No.:2022011101
MFR.: OLYMPIA	SUR.:1*0.0165	Shielding Angle:



C Range: 0 - 360DEG
C Interval: 30.0DEG
Test Speed: HIGH
Temperature:25.3DEG
Operators:LPC
Test Date:2022-01-11

γ Range: 0 - 180DEG
 γ Interval: 1.0DEG
Test System:EVERFINE GO-2000B_V1 SYSTEM V2.0.269
Humidity:65.0%
Test Distance:9.200m [K=1.0000]
Remarks:

LED Avg.L Report

Test:U:24.00V I:0.3275A P:7.860W PF:1.000 Freq:0Hz Lamp Flux:334.515x1 lm		
NAME: SF18-24V-2835-120-2700+5700-80-2700	TYPE:硅胶	WEIGHT:
SPEC.:	DIM.: 16.5mm*16.5mm	SERIAL No.:2022011101
MFR.: OLYMPIA	SUR.:1*0.0165	Shielding Angle:

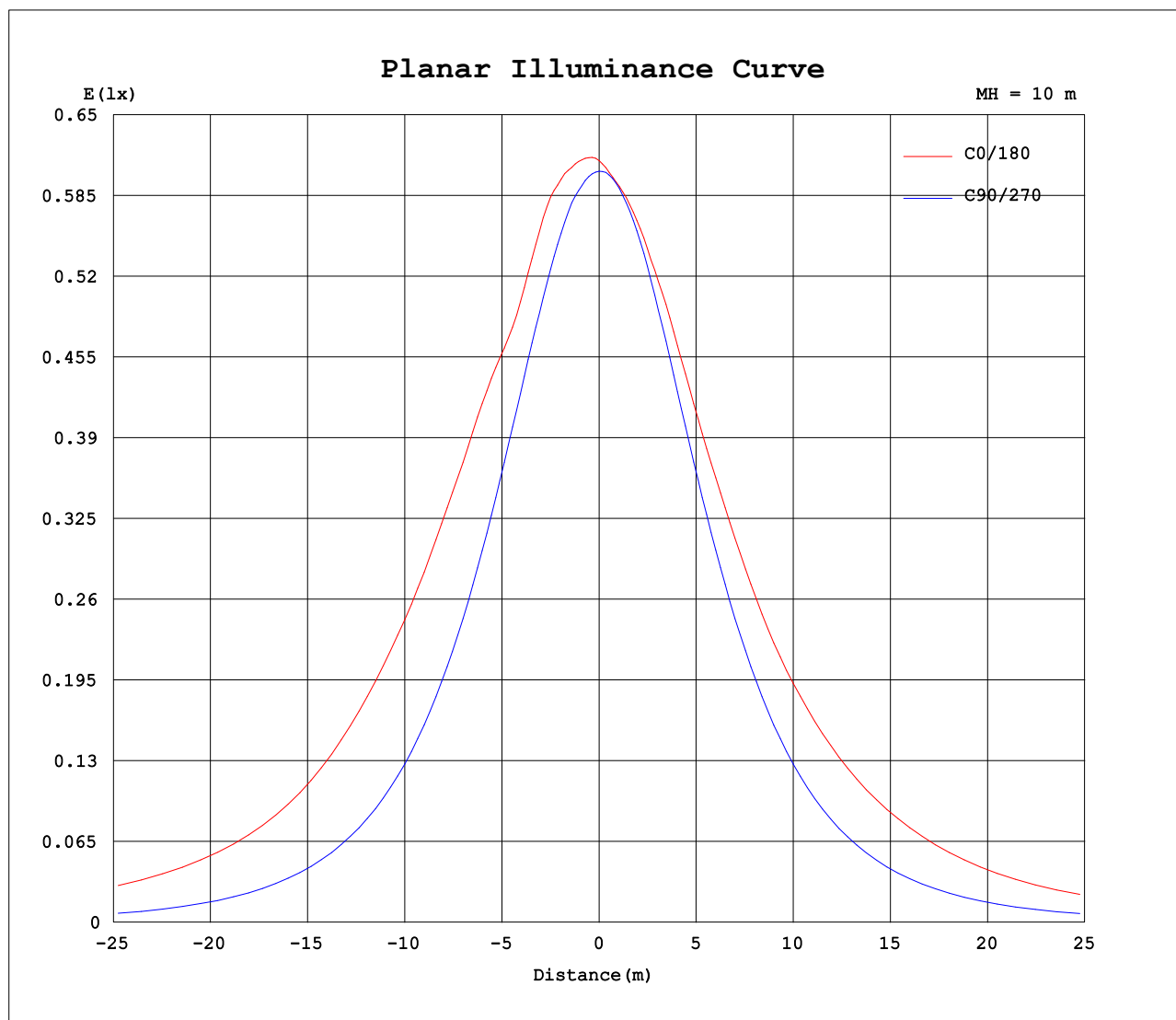
AvgL	cd/m2
L_0~180 (65) av	7530
L_0~180 (75) av	10133
L_0~180 (85) av	24988
L_90~270 (65) av	2416
L_90~270 (75) av	1707
L_90~270 (85) av	640
L_45 (65) av	5516
L_45 (75) av	7184
L_45 (85) av	15609

Standard: GB/T 29293-2012

C Range: 0 - 360DEG
C Interval: 30.0DEG
Test Speed: HIGH
Temperature:25.3DEG
Operators:LPC
Test Date:2022-01-11

γ Range: 0 - 180DEG
γ Interval: 1.0DEG
Test System:EVERFINE GO-2000B_V1 SYSTEM V2.0.269
Humidity:65.0%
Test Distance:9.200m [K=1.0000]
Remarks:

Planar Illuminance Curve



C Range: 0 - 360DEG
C Interval: 30.0DEG
Test Speed: HIGH
Temperature: 25.3DEG
Operators: LPC
Test Date: 2022-01-11

γ Range: 0 - 180DEG
 γ Interval: 1.0DEG
Test System: EVERFINE GO-2000B_V1 SYSTEM V2.0.269
Humidity: 65.0%
Test Distance: 9.200m [K=1.0000]
Remarks:

LUMINOUS DISTRIBUTION INTENSITY DATA

Test:U:24.00V I:0.3275A P:7.860W PF:1.000 Freq:0Hz Lamp Flux:334.515x1 lm		
NAME: SF18-24V-2835-120-2700+5700-80-2700	TYPE: 硅胶	WEIGHT:
SPEC.:	DIM.: 16.5mm*16.5mm	SERIAL No.:2022011101
MFR.: OLYMPIA	SUR.:1*0.0165	Shielding Angle:

Table--1

UNIT: cd

C (DEG) γ (DEG)	0	30	60	90	120	150	180	210	240	270	300	330							
0	61.3	61.0	60.7	60.4	60.4	60.4	61.3	61.0	60.7	60.4	60.4	60.4							
5	62.1	61.7	60.9	60.0	59.5	59.5	60.3	60.2	59.9	60.2	60.7	61.1							
10	63.1	62.0	60.5	59.0	58.6	58.8	59.8	59.5	59.0	59.2	60.3	61.5							
15	63.9	62.7	59.4	57.1	57.1	58.1	59.2	58.7	57.7	57.3	59.4	62.1							
20	63.0	62.2	58.1	54.6	55.2	57.0	58.7	57.7	55.9	54.8	58.1	61.7							
25	63.2	60.6	56.7	51.7	53.0	55.7	57.7	56.4	53.7	51.7	56.8	60.2							
30	65.9	60.4	54.5	48.3	50.8	54.2	56.9	54.9	51.5	48.3	54.7	60.0							
35	67.4	61.8	51.5	44.5	48.1	52.9	56.3	53.6	48.8	44.5	51.8	61.4							
40	68.5	62.0	48.1	40.4	45.2	51.2	55.2	51.9	46.0	40.5	48.8	61.6							
45	68.9	61.8	45.1	36.1	41.8	49.3	54.4	50.0	42.7	36.1	45.8	61.5							
50	68.6	60.7	41.8	31.5	38.3	47.8	53.7	48.5	39.2	31.4	42.7	60.5							
55	66.1	58.8	38.1	26.8	34.3	45.9	52.3	46.6	35.2	26.6	38.9	58.6							
60	62.5	56.1	34.9	22.0	30.4	43.2	50.1	43.9	31.2	21.7	35.6	55.7							
65	59.1	52.5	31.7	17.1	26.8	40.3	46.0	40.9	27.6	16.6	32.4	52.1							
70	54.9	48.3	28.4	12.2	23.4	36.3	41.3	36.9	24.1	11.7	29.1	48.1							
75	50.1	44.0	24.9	7.58	19.4	31.2	36.4	31.7	20.1	7.00	25.5	43.8							
80	46.2	39.4	21.4	3.61	15.3	26.2	32.0	26.6	15.9	3.06	21.8	39.2							
85	44.5	36.2	18.1	1.08	11.4	22.0	27.4	22.2	11.8	0.76	18.4	35.9							
90	45.0	35.2	16.6	0.90	8.83	19.0	23.8	19.0	8.78	0.63	16.6	34.7							
95	45.2	35.9	16.3	0.93	8.79	19.3	23.3	19.0	8.66	0.64	16.2	35.4							
100	42.9	33.5	15.6	1.06	8.64	18.7	23.6	18.5	8.51	0.78	15.6	33.2							
105	41.8	33.9	14.0	1.10	8.08	19.6	24.3	19.4	7.96	0.80	14.0	33.4							
110	40.3	33.4	13.6	1.11	8.32	19.1	23.8	19.0	8.15	0.81	13.8	33.1							
115	38.4	31.1	13.9	1.14	8.57	18.2	22.8	18.1	8.43	0.86	13.1	30.9							
120	35.3	28.5	11.6	1.19	8.26	17.1	21.6	17.0	8.12	0.93	11.7	28.3							
125	31.8	25.9	9.56	1.24	7.34	15.7	19.9	15.7	7.33	1.01	9.71	25.7							
130	28.1	21.2	7.85	1.29	6.78	14.1	17.9	14.2	6.66	1.11	7.77	21.4							
135	24.2	16.7	6.36	1.33	6.00	12.5	15.7	12.6	5.90	1.17	6.14	16.4							
140	20.1	12.6	5.06	1.36	5.22	10.8	13.5	10.7	5.14	1.21	4.86	11.7							
145	16.1	9.61	4.05	1.40	4.39	8.94	11.2	8.98	4.41	1.25	3.81	9.19							
150	12.4	7.15	3.25	1.54	3.73	7.32	9.08	7.38	3.91	1.38	3.01	6.81							
155	9.30	5.23	2.94	1.56	3.03	5.93	7.17	5.88	3.08	1.42	2.63	4.93							
160	6.52	3.81	2.52	1.56	2.36	4.76	5.59	4.87	2.39	1.44	2.26	3.59							
165	4.25	2.69	2.16	1.57	1.95	3.20	4.03	3.42	1.92	1.47	1.92	2.56							
170	2.16	2.10	2.00	1.57	1.77	2.12	1.96	2.28	1.73	1.49	1.85	2.01							
175	1.89	1.94	1.93	1.57	1.67	1.72	1.73	1.84	1.66	1.51	1.82	1.88							
180	1.67	1.68	1.61	1.57	1.59	1.60	1.70	1.70	1.64	1.52	1.59	1.59							

C Range: 0 - 360DEG
C Interval: 30.0DEG
Test Speed: HIGH
Temperature:25.3DEG
Operators:LPC
Test Date:2022-01-11

γ Range: 0 - 180DEG
γ Interval: 1.0DEG
Test System:EVERFINE GO-2000B_V1 SYSTEM V2.0.269
Humidity:65.0%
Test Distance:9.200m [K=1.0000]
Remarks:

Photometric Data Table [cd]

G/C	0.0	30.0	60.0	90.0	120.0	150.0	180.0	210.0	240.0	270.0
0.0	61.31	61.05	60.70	60.45	60.44	60.43	61.31	61.05	60.70	60.45
3.0	61.81	61.54	60.89	60.28	59.93	59.79	60.62	60.46	60.31	60.41
6.0	62.27	61.75	60.88	59.88	59.34	59.36	60.21	60.03	59.75	60.03
9.0	62.83	62.01	60.73	59.33	58.89	59.00	59.95	59.70	59.18	59.43
12.0	63.41	62.40	60.11	58.31	58.01	58.55	59.64	59.22	58.52	58.52
15.0	63.92	62.75	59.41	57.10	57.06	58.12	59.17	58.65	57.68	57.31
18.0	63.43	62.85	58.57	55.69	55.99	57.32	58.93	58.07	56.68	55.88
21.0	62.80	61.87	57.91	54.02	54.81	56.78	58.46	57.48	55.44	54.17
24.0	62.85	60.89	57.04	52.29	53.44	55.92	57.93	56.65	54.17	52.41
27.0	64.25	60.15	56.06	50.30	52.16	55.14	57.30	55.89	52.85	50.36
30.0	65.89	60.42	54.55	48.26	50.76	54.17	56.92	54.89	51.45	48.32
33.0	66.96	61.40	52.71	46.06	49.16	53.38	56.59	54.12	49.92	46.12
36.0	67.65	61.84	50.84	43.69	47.53	52.65	56.08	53.34	48.31	43.74
39.0	68.40	61.93	48.83	41.30	45.84	51.64	55.47	52.35	46.65	41.29
42.0	68.70	61.95	46.88	38.74	43.86	50.43	54.81	51.16	44.74	38.71
45.0	68.94	61.76	45.10	36.07	41.84	49.27	54.44	50.01	42.69	36.07
48.0	69.00	61.17	43.26	33.42	39.77	48.24	54.04	48.92	40.61	33.29
51.0	68.30	60.36	41.11	30.63	37.55	47.48	53.42	48.17	38.44	30.43
54.0	66.75	59.28	38.82	27.77	35.10	46.33	52.60	47.07	36.03	27.58
57.0	64.68	57.93	36.73	24.91	32.66	44.92	51.68	45.59	33.51	24.63
60.0	62.50	56.09	34.89	21.99	30.41	43.20	50.08	43.91	31.21	21.66
63.0	60.47	53.93	32.99	19.00	28.22	41.60	47.80	42.17	29.03	18.68
66.0	58.35	51.61	31.11	16.10	26.11	39.60	45.03	40.13	26.85	15.64
69.0	55.77	49.12	29.09	13.15	24.15	37.13	42.27	37.78	24.84	12.64
72.0	53.05	46.70	27.04	10.27	21.88	34.50	39.31	35.06	22.56	9.774
75.0	50.10	43.99	24.92	7.578	19.44	31.20	36.45	31.72	20.09	6.999
78.0	47.61	41.08	22.80	5.075	17.02	28.08	33.82	28.63	17.55	4.515
81.0	45.60	38.63	20.73	2.925	14.47	25.25	31.05	25.60	15.01	2.392
84.0	44.58	36.69	18.72	1.260	12.11	22.80	28.34	23.04	12.53	0.8623
87.0	44.52	35.56	17.18	0.9195	10.11	20.55	25.71	20.71	10.35	0.6488
90.0	45.00	35.16	16.55	0.8996	8.828	18.97	23.79	19.03	8.779	0.6278
93.0	45.43	35.56	16.36	0.9198	8.785	18.92	22.95	18.71	8.653	0.6344
96.0	44.94	36.12	16.20	0.9449	8.759	19.39	23.51	19.22	8.659	0.6410
99.0	43.18	33.17	15.80	1.011	8.667	18.44	23.50	18.16	8.633	0.7334
102.0	42.42	33.80	14.39	1.072	8.034	19.22	23.97	19.06	7.740	0.7890
105.0	41.77	33.92	14.00	1.096	8.081	19.57	24.31	19.42	7.956	0.7974
108.0	40.90	33.77	13.59	1.102	8.192	19.40	24.10	19.28	8.092	0.8057
111.0	40.02	33.10	13.93	1.111	8.392	18.96	23.62	18.81	8.218	0.8141
114.0	38.89	31.71	13.83	1.136	8.548	18.38	23.03	18.25	8.433	0.8493
117.0	37.37	30.05	13.02	1.166	8.534	17.80	22.33	17.65	8.357	0.8894
120.0	35.25	28.54	11.63	1.191	8.263	17.11	21.56	17.03	8.121	0.9297
123.0	33.29	27.05	10.38	1.221	7.827	16.35	20.61	16.26	7.677	0.9898
126.0	31.09	25.39	9.196	1.251	7.218	15.39	19.56	15.37	7.211	1.030
129.0	28.84	22.37	8.191	1.282	6.927	14.47	18.36	14.45	6.788	1.090
132.0	26.62	19.13	7.181	1.307	6.495	13.54	17.01	13.52	6.356	1.133
135.0	24.20	16.67	6.355	1.332	6.003	12.53	15.66	12.57	5.898	1.169
138.0	21.78	13.98	5.541	1.352	5.530	11.55	14.39	11.36	5.436	1.191
141.0	19.28	12.01	4.862	1.367	5.058	10.36	13.05	10.33	4.973	1.226
144.0	16.87	10.12	4.254	1.387	4.540	9.235	11.61	9.321	4.547	1.241
147.0	14.54	8.620	3.721	1.448	4.128	8.245	10.44	8.315	4.211	1.291
150.0	12.43	7.153	3.248	1.538	3.730	7.325	9.081	7.380	3.913	1.382
153.0	10.51	5.947	3.076	1.554	3.309	6.485	7.851	6.486	3.375	1.417
156.0	8.662	4.913	2.841	1.558	2.896	5.672	6.851	5.636	2.934	1.423
159.0	6.921	4.074	2.609	1.562	2.514	5.033	5.797	5.077	2.516	1.432
162.0	5.670	3.315	2.353	1.566	2.142	4.123	5.173	4.290	2.185	1.457
165.0	4.252	2.688	2.162	1.566	1.946	3.205	4.033	3.420	1.919	1.468
168.0	2.469	2.346	2.041	1.567	1.815	2.521	2.229	2.606	1.799	1.478
171.0	2.042	2.035	1.990	1.567	1.754	1.989	1.889	2.147	1.728	1.493
174.0	1.905	1.950	1.965	1.568	1.684	1.764	1.739	1.885	1.664	1.508
177.0	1.850	1.884	1.775	1.568	1.639	1.653	1.714	1.774	1.643	1.513
180.0	1.674	1.679	1.608	1.568	1.593	1.598	1.704	1.704	1.643	1.518
G/C	300.0	330.0								
0.0	60.44	60.43								
3.0	60.74	60.97								
6.0	60.71	61.20								
9.0	60.47	61.48								
12.0	60.03	61.85								
15.0	59.43	62.14								
18.0	58.56	62.29								
21.0	57.86	61.38								
24.0	57.08	60.47								
27.0	56.11	59.80								
30.0	54.70	59.97								

C Range: 0 - 360DEG
 C Interval: 30.0DEG
 Test Speed: HIGH
 Temperature: 25.3DEG
 Operators: LPC
 Test Date: 2022-01-11

γ Range: 0 - 180DEG
 γ Interval: 1.0DEG
 Test System: EVERFINE GO-2000B_V1 SYSTEM V2.0.269
 Humidity: 65.0%
 Test Distance: 9.200m [K=1.0000]
 Remarks:

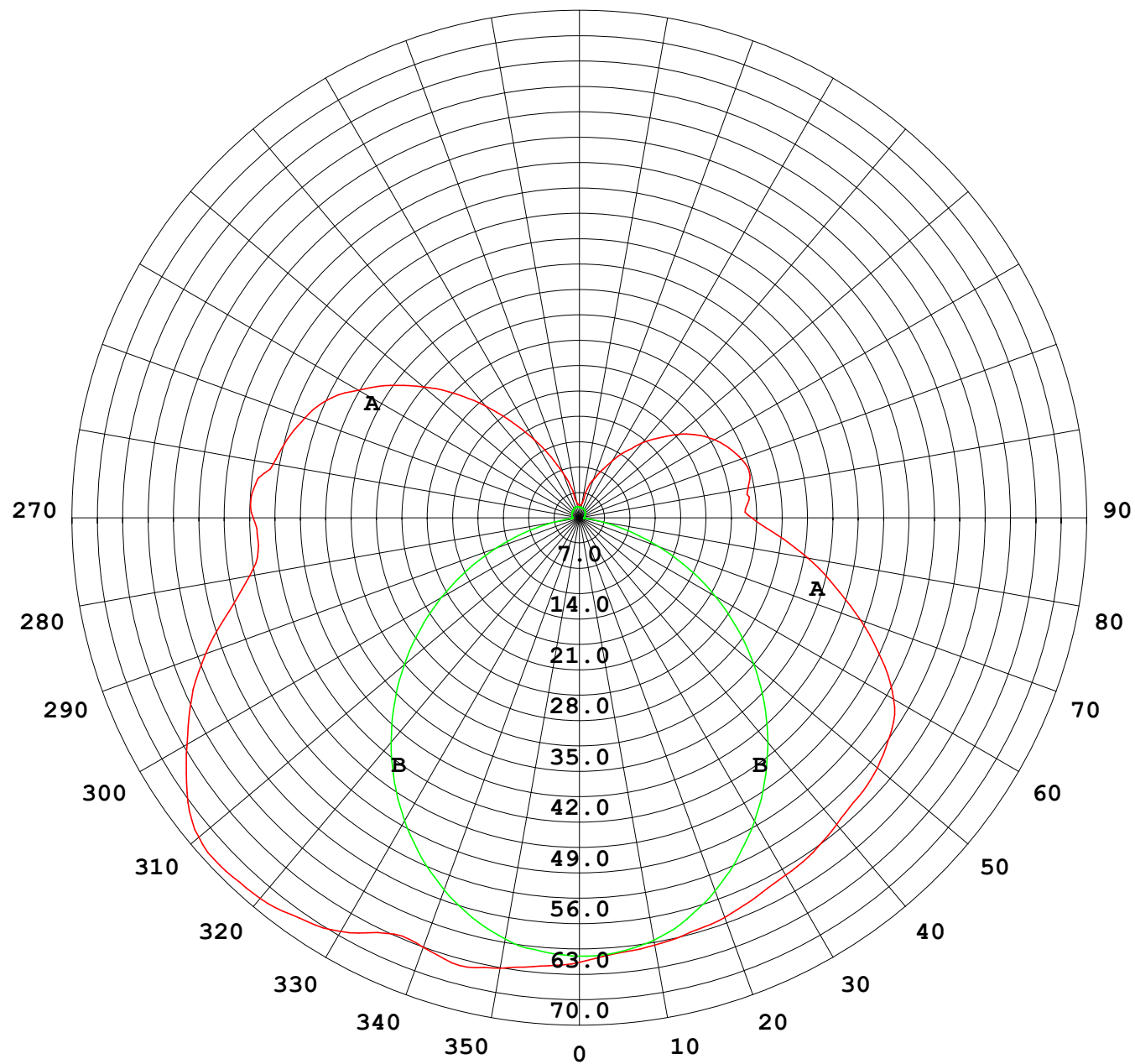
Photometric Data Table [cd]

33.0	52.95	60.98
36.0	51.19	61.46
39.0	49.41	61.56
42.0	47.63	61.60
45.0	45.81	61.46
48.0	44.02	60.93
51.0	41.91	60.16
54.0	39.64	59.05
57.0	37.43	57.62
60.0	35.58	55.75
63.0	33.66	53.69
66.0	31.80	51.30
69.0	29.79	48.92
72.0	27.63	46.54
75.0	25.46	43.82
78.0	23.31	40.82
81.0	21.11	38.36
84.0	19.01	36.37
87.0	17.34	35.19
90.0	16.57	34.66
93.0	16.35	35.06
96.0	16.17	35.54
99.0	15.75	32.90
102.0	14.35	33.41
105.0	14.01	33.42
108.0	14.20	33.32
111.0	13.94	32.84
114.0	13.21	31.55
117.0	12.48	29.82
120.0	11.66	28.32
123.0	10.53	26.79
126.0	9.358	25.15
129.0	8.142	22.39
132.0	7.078	19.56
135.0	6.138	16.38
138.0	5.354	13.49
141.0	4.631	10.99
144.0	4.018	9.684
147.0	3.431	8.206
150.0	3.009	6.813
153.0	2.779	5.728
156.0	2.527	4.606
159.0	2.321	3.862
162.0	2.080	3.038
165.0	1.925	2.559
168.0	1.864	2.228
171.0	1.842	1.960
174.0	1.819	1.880
177.0	1.728	1.850
180.0	1.588	1.588

C Range: 0 - 360DEG
 C Interval: 30.0DEG
 Test Speed: HIGH
 Temperature: 25.3DEG
 Operators: LPC
 Test Date: 2022-01-11

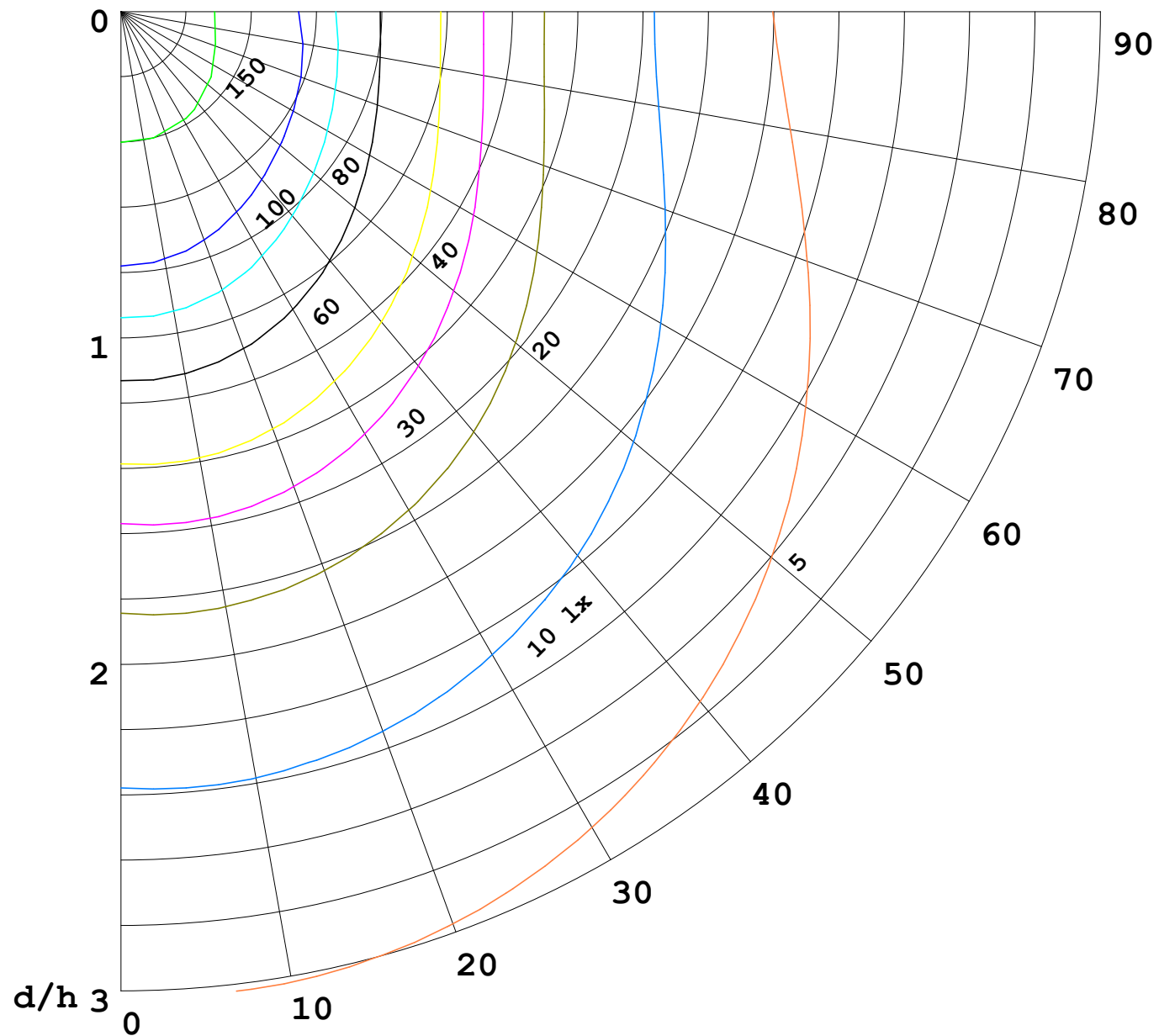
γ Range: 0 - 180DEG
 γ Interval: 1.0DEG
 Test System: EVERFINE GO-2000B_V1 SYSTEM V2.0.269
 Humidity: 65.0%
 Test Distance: 9.200m [K=1.0000]
 Remarks:

I (cd)



1000 lm

$\kappa = 1$



F = 5000 lm
 K = 0.7
 Hcc = 0.0 m
 Hfc = 0.0 m
 Eave = 100 lx

	Pcc	Pw	Pfc
—	70	50	30
—	50	30	20

