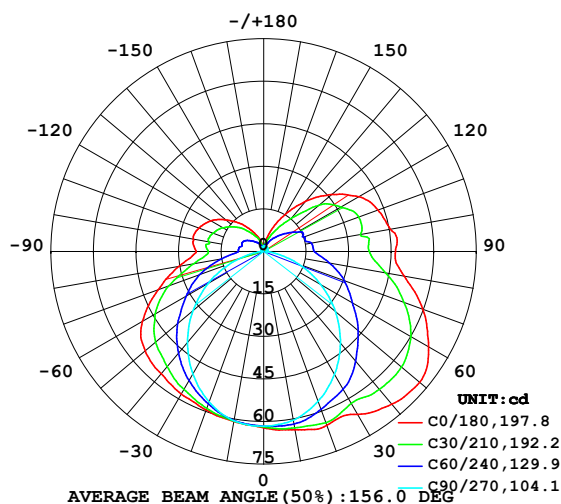


LUMINAIRE PHOTOMETRIC TEST REPORT

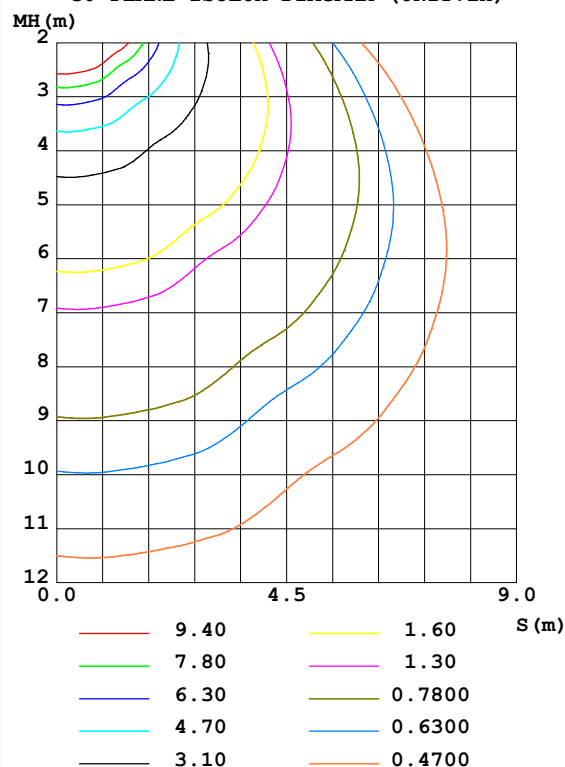
Test:U:24.00V I:0.3140A P:7.536W PF:1.000 Freq:0Hz Lamp Flux:347.645x1 lm		
NAME: SF18-24V-2835-120-3000+5700-80-3000	TYPE: 硅胶	WEIGHT:
SPEC.:	DIM.: 16.5mm*16.5mm	SERIAL No.:2022011104
MFR.: OLYMPIA	SUR.:1*0.0165	Shielding Angle:

DATA OF LAMP		PHOTOMETRIC DATA Eff: 46.13 lm/W			
MODEL	2835	I _{max} (cd)	71.77	S/MH (C0/180)	1.42
NOMINAL POWER(W)	7.5	LOR(%)	100.0	S/MH (C90/270)	1.21
RATED VOLTAGE(V)	24	TOTAL FLUX(lm)	347.64	η UP,DN(C0-180)	14.2,38.2
NOMINAL FLUX(lm)	347.645	CIE CLASS	SEMI-D.	η UP,DN(C180-360)	11.7,35.9
LAMPS INSIDE	1	η up (%)	25.9	CIBSE SHR NOM	1.50
TEST VOLTAGE(V)	24.0	η down (%)	74.1	CIBSE SHR MAX	1.55

LUMINOUS INTENSITY DISTRIBUTION DIAGRAM



C0 PLANE ISOLUX DIAGRAM (UNIT:lx)



C Range: 0 - 360DEG
C Interval: 30.0DEG
Test Speed: HIGH
Temperature: 25.3DEG
Operators: LPC
Test Date: 2022-01-11

γ Range: 0 - 180DEG
γ Interval: 1.0DEG
Test System: EVERFINE GO-2000B_V1 SYSTEM V2.0.269
Humidity: 65.0%
Test Distance: 9.200m [K=1.0000]
Remarks:

ZONAL FLUX DIAGRAM

ZONAL FLUX DIAGRAM:

γ	C0	C45	C90	C135	C180	C225	C270	C315	γ	Φ zone	Φ total	%lum, lamp
10	63.84	62.43	60.41	60.39	60.92	60.63	60.59	62.47	0- 10	5.887	5.887	1.69,1.69
20	65.20	61.74	56.23	57.62	59.47	58.01	56.40	61.73	10- 20	17.18	23.07	6.63,6.63
30	66.34	58.94	50.01	54.05	58.10	54.42	49.96	59.02	20- 30	26.81	49.88	14.3,14.3
40	70.36	57.01	42.17	49.29	56.29	49.88	41.83	56.99	30- 40	34.43	84.30	24.2,24.2
50	71.77	53.50	32.98	43.88	54.56	44.71	32.56	53.78	40- 50	39.42	123.7	35.6,35.6
60	67.18	48.06	23.11	37.12	49.36	37.89	22.63	48.38	50- 60	40.78	164.5	47.3,47.3
70	59.75	41.47	13.13	28.74	39.63	29.86	12.39	41.96	60- 70	37.88	202.4	58.2,58.2
80	50.34	33.64	4.180	19.36	30.30	20.04	3.665	34.19	70- 80	31.31	233.7	67.2,67.2
90	46.49	27.60	0.9499	14.66	23.84	14.30	0.7125	27.47	80- 90	23.92	257.6	74.1,74.1
100	45.43	25.90	1.086	14.45	25.27	14.23	0.8238	25.59	90-100	21.79	279.4	80.4,80.4
110	42.87	25.52	1.206	13.58	24.32	13.62	0.8924	25.25	100-110	20.19	299.6	86.2,86.2
120	38.74	22.54	1.357	12.09	21.62	12.19	1.000	21.40	110-120	17.81	317.4	91.3,91.3
130	31.27	17.59	1.458	9.593	17.37	9.755	1.161	16.76	120-130	13.53	330.9	95.2,95.2
140	23.15	11.06	1.669	7.058	12.94	7.176	1.397	10.30	130-140	8.694	339.6	97.7,97.7
150	14.90	6.590	1.847	4.688	8.499	4.893	1.598	6.291	140-150	4.764	344.4	99.1,99.1
160	8.099	3.889	1.875	2.826	5.118	2.974	1.729	3.933	150-160	2.240	346.6	99.7,99.7
170	2.706	2.528	1.901	1.827	1.844	1.847	1.811	2.563	160-170	0.8302	347.5	99.9,99.9
180	1.729	1.844	1.895	1.907	1.679	1.814	1.895	1.920	170-180	0.1887	347.6	100,100
DEG	LUMINOUS INTENSITY:cd									UNIT:lm		

Conical surface Flux(90deg): 103.57 lm

%lum = 29.8%

%lamp = 29.8%

Conical surface Flux(120deg): 164.5 lm

%lum = 47.3%

%lamp = 47.3%

C Range: 0 - 360DEG
 C Interval: 30.0DEG
 Test Speed: HIGH
 Temperature:25.3DEG
 Operators:LPC
 Test Date:2022-01-11

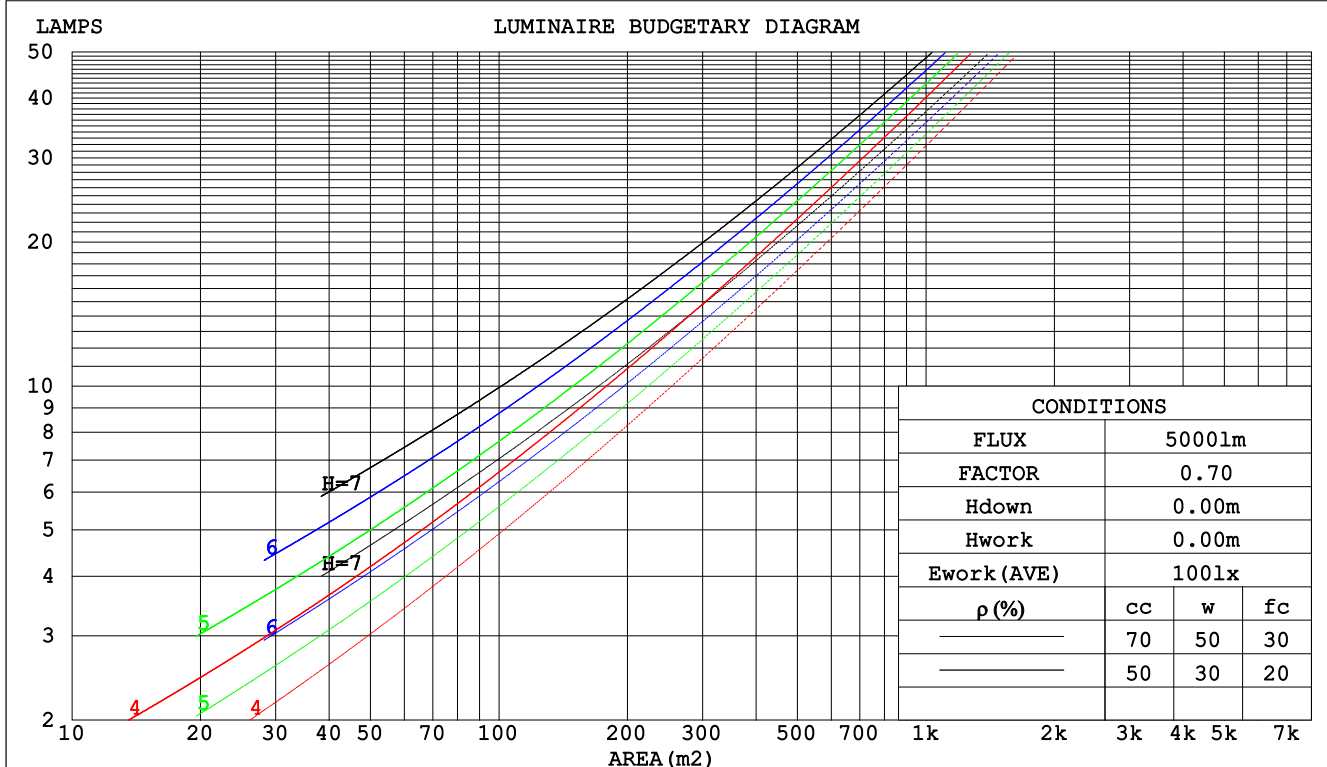
γ Range: 0 - 180DEG
 γ Interval: 1.0DEG
 Test System:EVERFINE GO-2000B_V1 SYSTEM V2.0.269
 Humidity:65.0%
 Test Distance:9.200m [K=1.0000]
 Remarks:

LUMINANCE cd/(m2)		
G (DEG)	C0/180	C90/270
85	32670	900
80	17570	1459
75	12906	1959
70	10587	2327
65	9112	2599
60	8143	2802
55	7445	2969
50	6767	3110
45	6117	3233

CU AND LUMINAIRE BUDGETARY ESTIMATE DIAGRAM

Test:U:24.00V I:0.3140A P:7.536W PF:1.000 Freq:0Hz Lamp Flux:347.645x1 lm		
NAME: SF18-24V-2835-120-3000+5700-80-3000	TYPE: 硅胶	WEIGHT:
SPEC.:	DIM.: 16.5mm*16.5mm	SERIAL No.:2022011104
MFR.: OLYMPIA	SUR.:1*0.0165	Shielding Angle:

pcc	80%			70%			50%			30%			10%			0
pw	50%	30%	10%	50%	30%	10%	50%	30%	10%	50%	30%	10%	50%	30%	10%	0
pfc	20%			20%			20%			20%			20%			0
RCR	RCR:Room Cavity Ratio						Coefficients of Utilization(CU)									
0.0	1.13	1.13	1.13	1.07	1.07	1.07	.97	.97	.97	.87	.87	.87	.78	.78	.78	.74
1.0	.94	.89	.84	.89	.84	.80	.80	.76	.73	.72	.69	.66	.64	.62	.60	.56
2.0	.80	.73	.66	.76	.69	.63	.68	.63	.58	.61	.57	.53	.54	.51	.48	.44
3.0	.69	.61	.53	.66	.58	.51	.59	.53	.47	.53	.48	.43	.47	.43	.39	.36
4.0	.61	.51	.44	.58	.49	.43	.52	.45	.39	.47	.41	.36	.41	.37	.33	.30
5.0	.54	.44	.37	.51	.43	.36	.46	.39	.33	.41	.35	.31	.37	.32	.28	.25
6.0	.48	.39	.32	.46	.37	.31	.41	.34	.29	.37	.31	.26	.33	.28	.24	.22
7.0	.43	.34	.28	.41	.33	.27	.37	.30	.25	.34	.28	.23	.30	.25	.21	.19
8.0	.39	.31	.25	.37	.29	.24	.34	.27	.22	.31	.25	.20	.28	.23	.19	.17
9.0	.36	.27	.22	.34	.26	.21	.31	.24	.20	.28	.22	.18	.25	.20	.17	.15
10.0	.33	.25	.20	.31	.24	.19	.29	.22	.18	.26	.20	.16	.24	.19	.15	.13



C Range: 0 - 360DEG
C Interval: 30.0DEG
Test Speed: HIGH
Temperature:25.3DEG
Operators:LPC
Test Date:2022-01-11

γ Range: 0 - 180DEG
γ Interval: 1.0DEG
Test System:EVERFINE GO-2000B_V1 SYSTEM V2.0.269
Humidity:65.0%
Test Distance:9.200m [K=1.0000]
Remarks:

WEC AND CCEC

Test:U:24.00V I:0.3140A P:7.536W PF:1.000 Freq:0Hz Lamp Flux:347.645x1 lm		
NAME: SF18-24V-2835-120-3000+5700-80-3000	TYPE: 硅胶	WEIGHT:
SPEC.:	DIM.: 16.5mm*16.5mm	SERIAL No.:2022011104
MFR.: OLYMPIA	SUR.:1*0.0165	Shielding Angle:

pcc	80%			70%			50%			30%			10%			0	
pw	50%	30%	10%	50%	30%	10%	50%	30%	10%	50%	30%	10%	50%	30%	10%	0	
pfc	20%			20%			20%			20%			20%			0	
RCR	RCR:Room Cavity Ratio						Wall Exitance Coefficients(WEC)										
0.0																	
1.0	.379	.216	.068	.364	.208	.066	.336	.193	.061	.310	.179	.057	.286	.166	.053		
2.0	.329	.180	.055	.316	.174	.054	.290	.161	.050	.266	.149	.047	.244	.138	.044		
3.0	.293	.156	.047	.281	.150	.045	.257	.139	.042	.236	.129	.040	.216	.119	.037		
4.0	.264	.137	.040	.253	.132	.039	.232	.123	.037	.212	.114	.034	.194	.105	.032		
5.0	.240	.122	.035	.230	.118	.034	.210	.110	.032	.192	.102	.030	.176	.094	.028		
6.0	.220	.110	.032	.211	.106	.031	.193	.099	.029	.176	.092	.027	.161	.085	.025		
7.0	.203	.100	.028	.194	.097	.028	.178	.090	.026	.163	.083	.024	.148	.077	.023		
8.0	.188	.092	.026	.180	.089	.025	.165	.083	.024	.151	.077	.022	.138	.071	.021		
9.0	.175	.085	.024	.168	.082	.023	.154	.076	.022	.141	.071	.020	.129	.065	.019		
10.0	.164	.079	.022	.157	.076	.021	.144	.071	.020	.132	.066	.019	.121	.061	.017		

pcc	80%			70%			50%			30%			10%			0
pw	50%	30%	10%	50%	30%	10%	50%	30%	10%	50%	30%	10%	50%	30%	10%	0
pfc	20%			20%			20%			20%			20%			0
RCR	RCR:Room Cavity Ratio						Ceiling Cavity Exitance Coefficients(CCEC)									
0.0	.388	.388	.388	.331	.331	.331	.226	.226	.226	.130	.130	.130	.042	.042	.042	
1.0	.384	.354	.328	.329	.304	.282	.225	.209	.195	.129	.121	.113	.041	.039	.037	
2.0	.378	.332	.294	.323	.286	.254	.222	.198	.177	.128	.115	.104	.041	.037	.034	
3.0	.370	.316	.272	.317	.272	.236	.218	.189	.166	.126	.111	.098	.040	.036	.032	
4.0	.363	.304	.258	.311	.262	.224	.214	.183	.158	.124	.107	.094	.040	.035	.031	
5.0	.355	.294	.249	.305	.254	.216	.210	.178	.153	.122	.104	.091	.039	.034	.030	
6.0	.348	.286	.242	.299	.248	.211	.206	.173	.149	.120	.102	.089	.039	.033	.029	
7.0	.341	.280	.237	.293	.242	.206	.203	.170	.146	.118	.100	.087	.038	.033	.029	
8.0	.334	.274	.233	.288	.238	.203	.199	.167	.144	.116	.099	.086	.037	.032	.028	
9.0	.328	.270	.230	.283	.234	.201	.196	.164	.142	.114	.097	.085	.037	.032	.028	
10.0	.323	.265	.227	.278	.231	.199	.193	.162	.141	.113	.096	.084	.036	.031	.028	

C Range: 0 - 360DEG
 C Interval: 30.0DEG
 Test Speed: HIGH
 Temperature:25.3DEG
 Operators:LPC
 Test Date:2022-01-11

γ Range: 0 - 180DEG
 γ Interval: 1.0DEG
 Test System:EVERFINE GO-2000B_V1 SYSTEM V2.0.269
 Humidity:65.0%
 Test Distance:9.200m [K=1.0000]
 Remarks:

UGR(Unified Glare Rating) Table

Test:U:24.00V I:0.3140A P:7.536W PF:1.000 Freq:0Hz Lamp Flux:347.645x1 lm										
NAME: SF18-24V-2835-120-3000+5700-80-3000					TYPE: 硅胶			WEIGHT:		
SPEC.:					DIM.: 16.5mm*16.5mm			SERIAL No.:2022011104		
MFR.: OLYMPIA					SUR.:1*0.0165			Shielding Angle:		
ceiling/cavity	0.7	0.7	0.5	0.5	0.3	0.7	0.7	0.5	0.5	0.3
walls	0.5	0.3	0.5	0.3	0.3	0.5	0.3	0.5	0.3	0.3
working plane	0.2	0.2	0.2	0.2	0.2	0.2	0.2	0.2	0.2	0.2
Room dimensions	Viewed crosswise					Viewed endwise				
x = 2H y = 2H	23.1	24.4	23.7	25.0	25.7	18.8	20.1	19.5	20.7	21.5
3H	26.0	27.1	26.6	27.8	28.5	20.3	21.5	20.9	22.1	22.9
4H	27.5	28.6	28.1	29.3	30.0	20.8	22.0	21.5	22.6	23.4
6H	29.1	30.2	29.8	30.9	31.7	21.2	22.2	21.9	22.9	23.7
8H	30.0	31.1	30.7	31.7	32.6	21.3	22.3	22.0	23.0	23.8
12H	31.1	32.1	31.8	32.8	33.6	21.3	22.3	22.0	23.0	23.8
4H 2H	23.6	24.7	24.2	25.3	26.1	20.6	21.8	21.3	22.4	23.2
3H	26.7	27.7	27.4	28.4	29.2	22.4	23.3	23.1	24.0	24.9
4H	28.4	29.3	29.2	30.1	30.9	23.1	24.0	23.9	24.8	25.6
6H	30.3	31.1	31.0	31.8	32.7	23.7	24.5	24.5	25.3	26.2
8H	31.3	32.1	32.1	32.8	33.7	23.9	24.7	24.7	25.4	26.3
12H	32.5	33.2	33.3	34.0	34.9	24.1	24.7	24.8	25.5	26.4
8H 4H	28.7	29.5	29.5	30.2	31.1	24.7	25.5	25.5	26.2	27.1
6H	30.9	31.5	31.7	32.3	33.3	25.8	26.4	26.5	27.2	28.1
8H	32.2	32.7	32.9	33.5	34.5	26.2	26.8	27.0	27.6	28.5
12H	33.6	34.1	34.4	34.9	35.9	26.6	27.1	27.4	27.9	28.9
12H 4H	28.7	29.4	29.5	30.2	31.1	25.2	25.9	26.0	26.7	27.6
6H	31.0	31.6	31.8	32.4	33.3	26.6	27.1	27.3	27.9	28.9
8H	32.4	32.9	33.2	33.7	34.6	27.2	27.7	28.0	28.5	29.5
Variations with the observer position at spacings:										
S = 1.0H	+ 0.1 / - 0.1					+ 0.1 / - 0.1				
1.5H	+ 0.2 / - 0.3					+ 0.2 / - 0.3				
2.0H	+ 0.2 / - 0.3					+ 0.2 / - 0.4				

CIE Pub.117, 347.6 lm Total Lamp Luminous Flux Correct (8log(F/F0) = -3.7)

C Range: 0 - 360DEG
C Interval: 30.0DEG
Test Speed: HIGH
Temperature:25.3DEG
Operators:LPC
Test Date:2022-01-11

γ Range: 0 - 180DEG
γ Interval: 1.0DEG
Test System:EVERFINE GO-2000B_V1 SYSTEM V2.0.269
Humidity:65.0%
Test Distance:9.200m [K=1.0000]
Remarks:

UTILIZATION FACTORS TABLE

Test:U:24.00V I:0.3140A P:7.536W PF:1.000 Freq:0Hz Lamp Flux:347.645x1 lm		
NAME: SF18-24V-2835-120-3000+5700-80-3000	TYPE: 硅胶	WEIGHT:
SPEC.:	DIM.: 16.5mm*16.5mm	SERIAL No.:2022011104
MFR.: OLYMPIA	SUR.:1*0.0165	Shielding Angle:

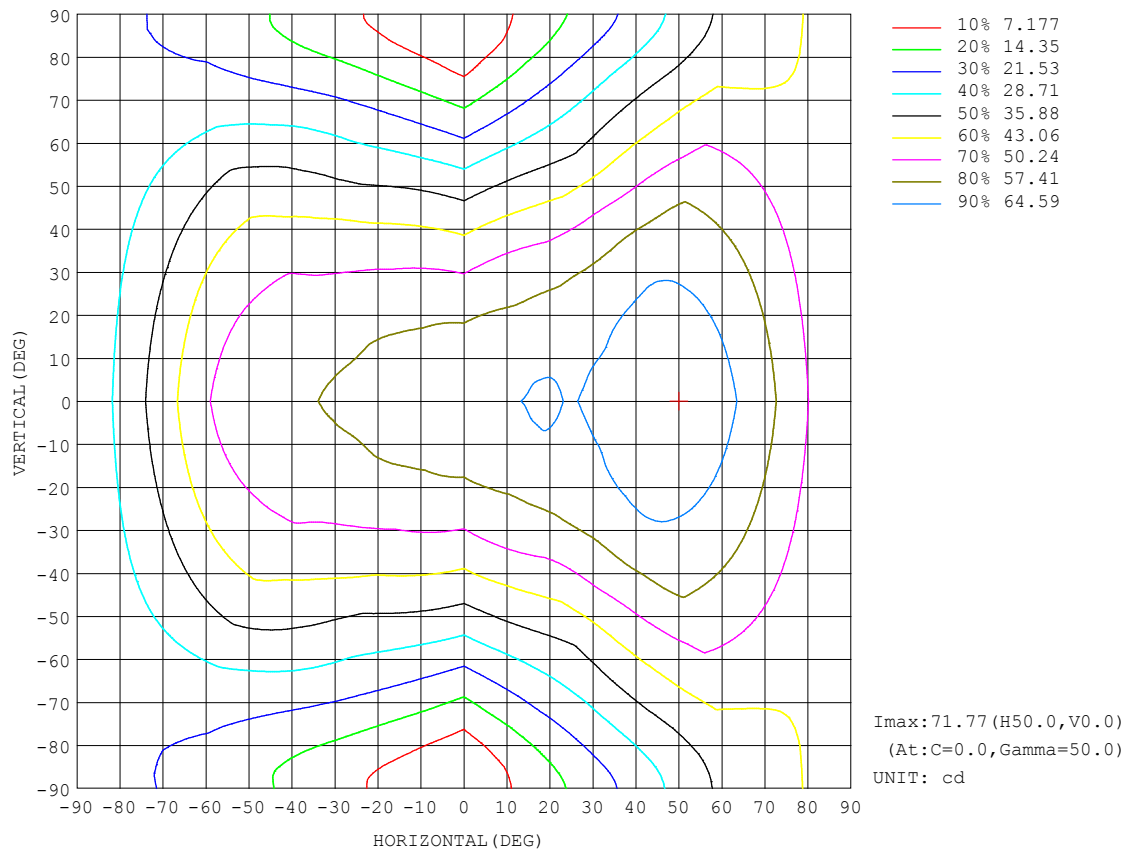
REFLECTANCE										
Ceiling	0.8	0.8	0.8	0.7	0.7	0.7	0.5	0.5	0.5	0
Walls	0.7	0.5	0.3	0.7	0.5	0.3	0.7	0.5	0.3	0
Working plane	0.2	0.2	0.2	0.2	0.2	0.2	0.2	0.2	0.2	0
ROOM INDEX	UTILIZATION FACTORS (PERCENT) $k(RI) \times RCR = 5$									
$k = 0.60$	45	32	25	44	32	25	41	31	24	17
0.80	54	41	33	52	40	32	49	38	31	23
1.00	62	49	40	59	47	39	55	47	38	28
1.25	69	56	47	66	54	46	61	51	44	33
1.50	74	61	53	71	59	51	65	56	49	37
2.00	81	70	62	78	67	60	71	63	56	43
2.50	86	76	67	82	73	65	75	67	61	47
3.00	90	80	73	86	77	70	78	71	65	50
4.00	95	87	80	90	83	77	82	76	71	54
5.00	98	91	85	93	87	81	84	79	75	57
ROOM INDEX	UF (total)									Direct
According to DIN EN 13032-2 2004			Suspended					SHRNOM = 1.25		

C Range: 0 - 360DEG
 C Interval: 30.0DEG
 Test Speed: HIGH
 Temperature: 25.3DEG
 Operators: LPC
 Test Date: 2022-01-11

γ Range: 0 - 180DEG
 γ Interval: 1.0DEG
 Test System: EVERFINE GO-2000B_V1 SYSTEM V2.0.269
 Humidity: 65.0%
 Test Distance: 9.200m [K=1.0000]
 Remarks:

ISOCANDELA DIAGRAM

Test:U:24.00V I:0.3140A P:7.536W PF:1.000 Freq:0Hz Lamp Flux:347.645x1 lm		
NAME: SF18-24V-2835-120-3000+5700-80-3000	TYPE: 硅胶	WEIGHT:
SPEC.:	DIM.: 16.5mm*16.5mm	SERIAL No.:2022011104
MFR.: OLYMPIA	SUR.:1*0.0165	Shielding Angle:

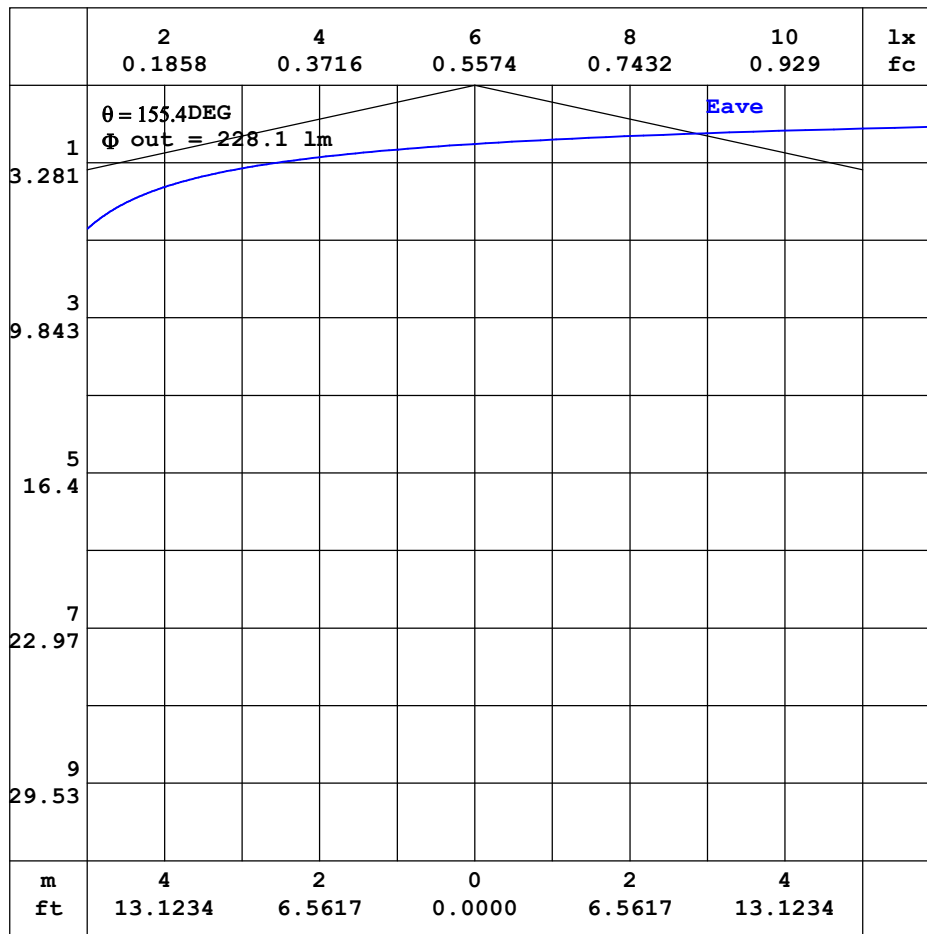


C Range: 0 - 360DEG
C Interval: 30.0DEG
Test Speed: HIGH
Temperature: 25.3DEG
Operators: LPC
Test Date: 2022-01-11

γ Range: 0 - 180DEG
 γ Interval: 1.0DEG
Test System: EVERFINE GO-2000B_V1 SYSTEM V2.0.269
Humidity: 65.0%
Test Distance: 9.200m [K=1.0000]
Remarks:

AAI CURVES

Test:U:24.00V I:0.3140A P:7.536W PF:1.000 Freq:0Hz Lamp Flux:347.645x1 lm		
NAME: SF18-24V-2835-120-3000+5700-80-3000	TYPE: 硅胶	WEIGHT:
SPEC.:	DIM.: 16.5mm*16.5mm	SERIAL No.:2022011104
MFR.: OLYMPIA	SUR.:1*0.0165	Shielding Angle:



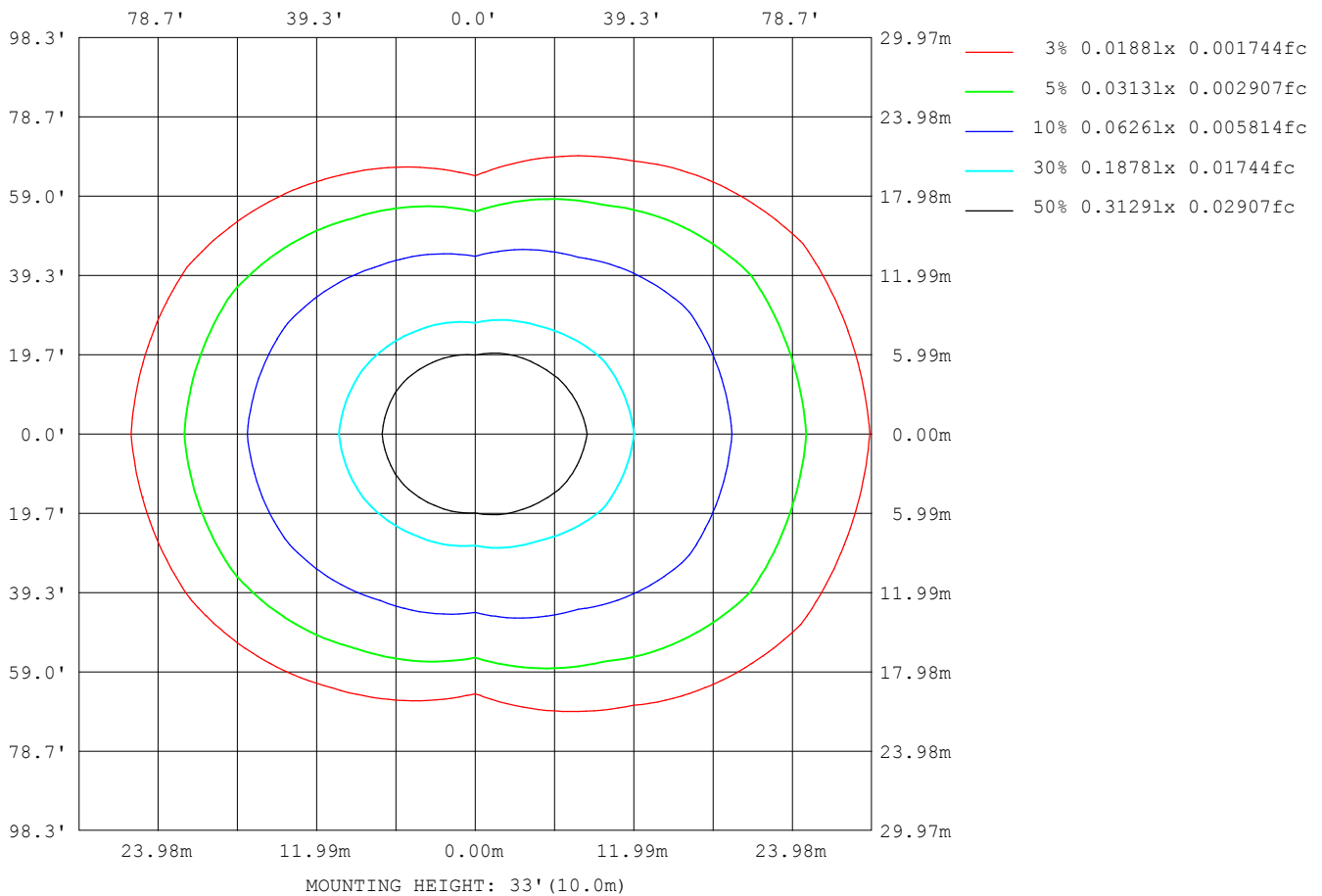
Note: The Curves indicate the illuminated area and the average illumination when the luminaire is at different distance.

C Range: 0 - 360DEG
 C Interval: 30.0DEG
 Test Speed: HIGH
 Temperature: 25.3DEG
 Operators: LPC
 Test Date: 2022-01-11

γ Range: 0 - 180DEG
 γ Interval: 1.0DEG
 Test System: EVERFINE GO-2000B_V1 SYSTEM V2.0.269
 Humidity: 65.0%
 Test Distance: 9.200m [K=1.0000]
 Remarks:

ISOLUX DIAGRAM

Test:U:24.00V I:0.3140A P:7.536W PF:1.000 Freq:0Hz Lamp Flux:347.645x1 lm		
NAME: SF18-24V-2835-120-3000+5700-80-3000	TYPE: 硅胶	WEIGHT:
SPEC.:	DIM.: 16.5mm*16.5mm	SERIAL No.:2022011104
MFR.: OLYMPIA	SUR.:1*0.0165	Shielding Angle:



C Range: 0 - 360DEG
C Interval: 30.0DEG
Test Speed: HIGH
Temperature:25.3DEG
Operators:LPC
Test Date:2022-01-11

γ Range: 0 - 180DEG
 γ Interval: 1.0DEG
Test System:EVERFINE GO-2000B_V1 SYSTEM V2.0.269
Humidity:65.0%
Test Distance:9.200m [K=1.0000]
Remarks:

LED Avg.L Report

Test:U:24.00V I:0.3140A P:7.536W PF:1.000 Freq:0Hz Lamp Flux:347.645x1 lm		
NAME: SF18-24V-2835-120-3000+5700-80-3000	TYPE:硅胶	WEIGHT:
SPEC.:	DIM.: 16.5mm*16.5mm	SERIAL No.:2022011104
MFR.: OLYMPIA	SUR.:1*0.0165	Shielding Angle:

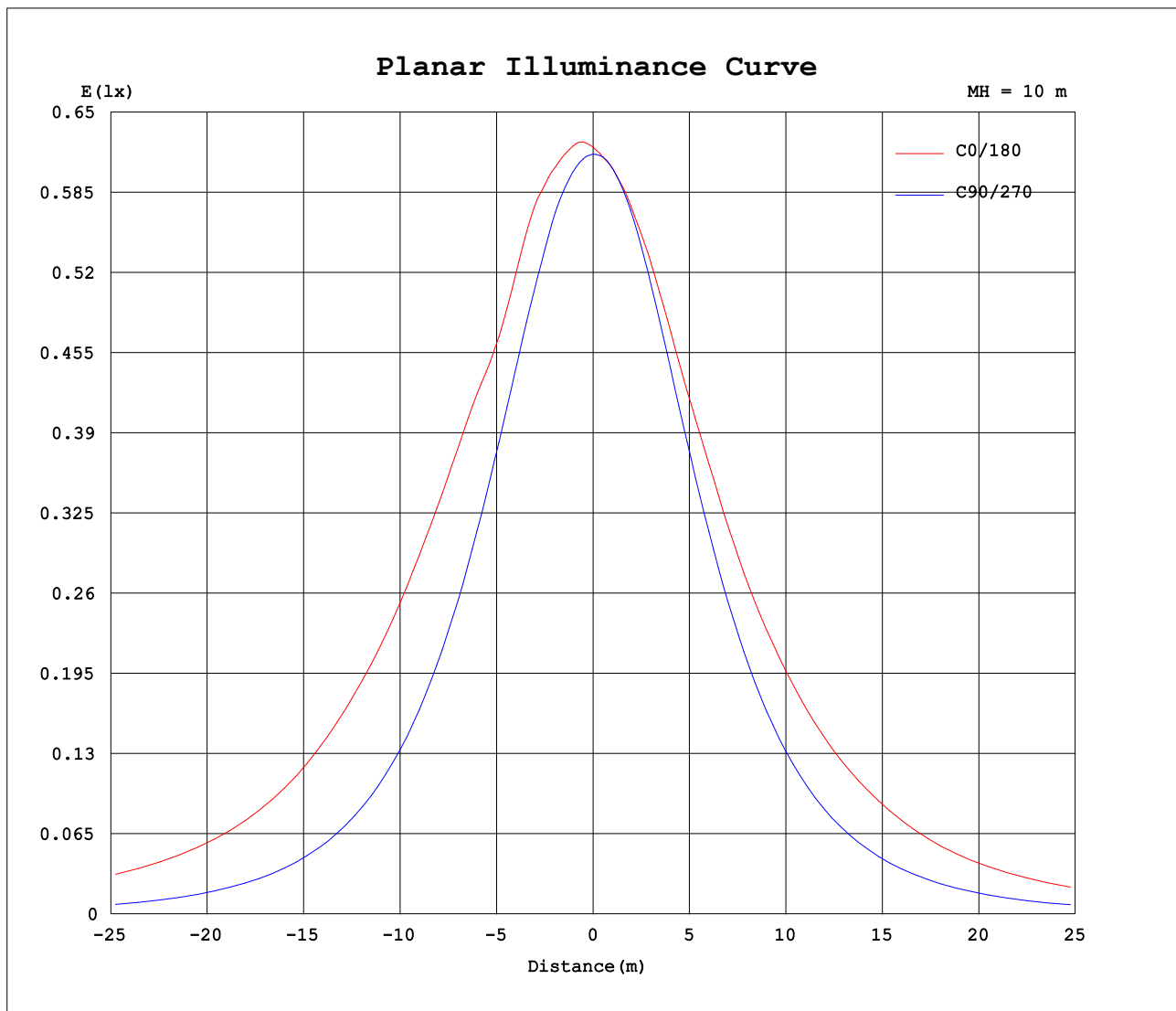
AvgL	cd/m2
L_0~180 (65) av	7762
L_0~180 (75) av	10550
L_0~180 (85) av	25361
L_90~270 (65) av	2555
L_90~270 (75) av	1864
L_90~270 (85) av	763
L_45 (65) av	5717
L_45 (75) av	7439
L_45 (85) av	16317

Standard: GB/T 29293-2012

C Range: 0 - 360DEG
C Interval: 30.0DEG
Test Speed: HIGH
Temperature:25.3DEG
Operators:LPC
Test Date:2022-01-11

γ Range: 0 - 180DEG
γ Interval: 1.0DEG
Test System:EVERFINE GO-2000B_V1 SYSTEM V2.0.269
Humidity:65.0%
Test Distance:9.200m [K=1.0000]
Remarks:

Planar Illuminance Curve



C Range: 0 - 360DEG
C Interval: 30.0DEG
Test Speed: HIGH
Temperature: 25.3DEG
Operators: LPC
Test Date: 2022-01-11

γ Range: 0 - 180DEG
 γ Interval: 1.0DEG
Test System: EVERFINE GO-2000B_V1 SYSTEM V2.0.269
Humidity: 65.0%
Test Distance: 9.200m [K=1.0000]
Remarks:

LUMINOUS DISTRIBUTION INTENSITY DATA

Test:U:24.00V I:0.3140A P:7.536W PF:1.000 Freq:0Hz Lamp Flux:347.645x1 lm		
NAME: SF18-24V-2835-120-3000+5700-80-3000	TYPE: 硅胶	WEIGHT:
SPEC.:	DIM.: 16.5mm*16.5mm	SERIAL No.:2022011104
MFR.: OLYMPIA	SUR.:1*0.0165	Shielding Angle:

Table--1

UNIT: cd

C (DEG) γ (DEG)	0	30	60	90	120	150	180	210	240	270	300	330						
0	62.2	61.9	61.6	61.6	61.7	61.7	62.2	61.9	61.6	61.6	61.7	61.7						
5	63.2	62.8	61.8	61.2	61.2	61.2	61.4	61.4	61.2	61.5	62.0	62.5						
10	63.8	63.1	61.7	60.4	60.3	60.5	60.9	60.8	60.5	60.6	61.9	63.1						
15	65.0	63.6	60.9	58.6	58.8	59.7	60.3	59.9	59.1	58.9	61.1	63.3						
20	65.2	64.3	59.2	56.2	56.8	58.5	59.5	58.8	57.2	56.4	59.4	64.0						
25	64.4	63.3	57.6	53.3	54.6	57.2	58.6	57.6	55.1	53.4	57.6	63.4						
30	66.3	61.8	56.1	50.0	52.1	56.0	58.1	56.3	52.6	50.0	56.1	61.9						
35	68.8	62.6	53.8	46.2	49.3	54.3	57.2	54.9	49.9	46.1	54.0	62.0						
40	70.4	63.5	50.5	42.2	46.2	52.4	56.3	53.0	46.8	41.8	50.9	63.1						
45	71.4	63.7	46.9	37.7	42.7	50.9	55.7	51.3	43.4	37.3	47.6	63.4						
50	71.8	63.4	43.6	33.0	38.7	49.1	54.6	49.8	39.7	32.6	44.2	63.3						
55	70.5	62.0	39.8	28.1	34.6	46.4	52.9	47.2	35.4	27.7	40.5	62.2						
60	67.2	59.9	36.2	23.1	30.9	43.4	49.4	44.2	31.6	22.6	36.7	60.1						
65	63.5	56.6	33.2	18.1	27.2	39.3	44.7	40.4	28.0	17.5	33.7	57.1						
70	59.7	52.7	30.3	13.1	23.2	34.3	39.6	35.7	24.0	12.4	30.8	53.2						
75	55.1	48.6	27.0	8.37	18.9	28.7	35.0	30.0	19.5	7.55	27.5	49.1						
80	50.3	43.7	23.6	4.18	14.5	24.2	30.3	25.0	15.0	3.66	23.9	44.5						
85	47.0	39.5	20.2	1.29	10.7	20.7	26.0	21.1	11.0	0.90	20.4	40.0						
90	46.5	37.3	17.9	0.95	9.22	20.1	23.8	19.6	9.02	0.71	17.7	37.2						
95	47.3	37.2	17.5	0.99	9.15	20.9	24.8	20.4	8.96	0.75	17.2	36.7						
100	45.4	34.7	17.1	1.09	8.93	20.0	25.3	19.7	8.80	0.82	16.9	34.3						
105	44.1	35.8	15.2	1.17	8.07	19.8	25.2	19.8	7.98	0.87	15.0	35.4						
110	42.9	35.7	15.3	1.21	8.26	18.9	24.3	19.0	8.22	0.89	15.0	35.5						
115	41.4	34.3	15.3	1.28	8.23	17.9	23.1	18.0	8.18	0.93	13.8	34.4						
120	38.7	31.4	13.7	1.36	7.64	16.5	21.6	16.7	7.65	1.00	12.7	30.1						
125	35.1	29.0	11.7	1.42	6.87	15.0	19.7	15.2	6.86	1.08	11.4	28.1						
130	31.3	25.3	9.85	1.46	5.83	13.4	17.4	13.6	5.93	1.16	9.64	23.9						
135	27.3	19.6	8.22	1.58	5.16	11.6	15.1	11.8	5.16	1.28	7.70	19.1						
140	23.1	15.4	6.73	1.67	4.36	9.75	12.9	9.95	4.40	1.40	6.22	14.4						
145	18.9	11.8	5.51	1.73	3.74	7.83	10.5	8.13	3.87	1.44	5.02	11.2						
150	14.9	8.92	4.26	1.85	3.00	6.38	8.50	6.64	3.15	1.60	3.97	8.61						
155	11.4	6.64	3.32	1.86	2.37	5.26	6.59	5.48	2.44	1.65	3.57	6.48						
160	8.10	4.89	2.89	1.87	1.95	3.71	5.12	4.06	1.88	1.73	3.20	4.67						
165	5.67	3.61	2.72	1.89	1.85	2.40	3.47	2.64	1.79	1.79	2.78	3.50						
170	2.71	2.76	2.29	1.90	1.76	1.89	1.84	2.01	1.69	1.81	2.31	2.82						
175	2.01	2.12	2.08	1.90	1.65	1.72	1.74	1.80	1.62	1.84	2.06	2.16						
180	1.73	1.75	1.94	1.89	1.89	1.92	1.68	1.76	1.86	1.89	1.91	1.92						

C Range: 0 - 360DEG
C Interval: 30.0DEG
Test Speed: HIGH
Temperature:25.3DEG
Operators:LPC
Test Date:2022-01-11

γ Range: 0 - 180DEG
γ Interval: 1.0DEG
Test System:EVERFINE GO-2000B_V1 SYSTEM V2.0.269
Humidity:65.0%
Test Distance:9.200m [K=1.0000]
Remarks:

Photometric Data Table [cd]

G/C	0.0	30.0	60.0	90.0	120.0	150.0	180.0	210.0	240.0	270.0
0.0	62.16	61.91	61.60	61.60	61.67	61.68	62.16	61.91	61.60	61.60
3.0	62.84	62.42	61.74	61.45	61.41	61.37	61.59	61.53	61.38	61.61
6.0	63.27	62.89	61.83	61.13	61.06	61.03	61.35	61.28	61.13	61.34
9.0	63.68	63.07	61.81	60.62	60.55	60.65	61.04	60.91	60.67	60.83
12.0	64.33	63.31	61.59	59.80	59.87	60.04	60.56	60.37	60.01	60.02
15.0	64.99	63.62	60.87	58.56	58.78	59.66	60.31	59.92	59.11	58.89
18.0	65.47	63.98	59.91	57.26	57.56	58.97	59.86	59.40	58.02	57.49
21.0	65.00	64.24	58.88	55.66	56.40	58.28	59.32	58.61	56.80	55.88
24.0	64.46	63.58	57.83	53.97	55.12	57.50	58.74	57.90	55.52	54.05
27.0	64.75	62.63	57.00	52.06	53.65	56.63	58.34	56.95	54.13	52.07
30.0	66.34	61.82	56.07	50.01	52.13	55.96	58.10	56.26	52.58	49.96
33.0	67.94	61.96	54.88	47.82	50.51	55.12	57.62	55.56	51.07	47.64
36.0	69.07	62.95	53.17	45.47	48.71	53.92	57.03	54.50	49.32	45.24
39.0	70.01	63.41	51.23	42.97	46.82	52.81	56.43	53.35	47.41	42.69
42.0	70.95	63.60	49.02	40.42	44.80	51.75	56.15	52.29	45.46	40.06
45.0	71.37	63.74	46.91	37.72	42.71	50.91	55.74	51.34	43.39	37.35
48.0	71.70	63.70	44.89	34.95	40.43	49.90	55.10	50.51	41.20	34.51
51.0	71.74	63.28	42.90	32.07	37.82	48.60	54.26	49.30	38.76	31.58
54.0	70.95	62.40	40.63	29.08	35.36	46.99	53.30	47.87	36.21	28.65
57.0	69.24	61.28	38.28	26.12	33.06	45.18	51.73	45.95	33.76	25.63
60.0	67.18	59.94	36.18	23.11	30.85	43.40	49.36	44.17	31.62	22.63
63.0	64.93	58.10	34.38	20.11	28.74	41.02	46.62	41.98	29.40	19.62
66.0	62.87	55.95	32.56	17.11	26.47	38.40	43.71	39.42	27.27	16.50
69.0	60.64	53.54	30.88	14.09	24.06	35.44	40.68	36.76	24.85	13.40
72.0	57.99	51.04	29.07	11.29	21.53	31.89	37.64	33.21	22.22	10.42
75.0	55.11	48.59	27.05	8.366	18.89	28.74	34.99	30.00	19.54	7.552
78.0	52.09	45.70	24.94	5.788	16.23	25.89	32.17	26.94	16.87	5.112
81.0	49.54	42.71	22.89	3.483	13.67	23.36	29.41	24.17	14.19	2.916
84.0	47.47	40.26	20.89	1.814	11.36	21.21	26.75	21.75	11.75	1.066
87.0	46.48	38.28	19.01	1.010	9.590	19.79	24.85	20.09	9.765	0.7394
90.0	46.49	37.33	17.87	0.9499	9.217	20.09	23.84	19.58	9.021	0.7125
93.0	47.01	36.98	17.62	0.9701	9.217	20.69	24.41	20.11	9.006	0.7328
96.0	47.21	37.37	17.43	1.000	9.112	21.07	24.98	20.55	8.915	0.7530
99.0	45.94	34.91	17.24	1.041	8.972	19.65	25.11	19.38	8.840	0.7733
102.0	44.85	35.43	16.33	1.145	8.452	19.96	25.41	20.03	8.404	0.8584
105.0	44.08	35.77	15.22	1.172	8.066	19.80	25.21	19.83	7.976	0.8711
108.0	43.45	35.82	15.32	1.186	8.152	19.29	24.72	19.41	8.092	0.8839
111.0	42.60	35.56	14.73	1.216	8.307	18.75	24.11	18.82	8.318	0.8966
114.0	41.77	34.70	15.38	1.267	8.308	18.18	23.38	18.28	8.251	0.9093
117.0	40.45	33.12	15.22	1.317	8.017	17.41	22.58	17.57	7.985	0.9397
120.0	38.74	31.43	13.65	1.357	7.641	16.53	21.62	16.73	7.648	1.000
123.0	36.44	29.99	12.57	1.392	7.199	15.62	20.54	15.79	7.225	1.040
126.0	34.35	28.49	11.35	1.422	6.716	14.68	19.31	14.85	6.611	1.090
129.0	32.03	26.35	10.19	1.448	5.938	13.73	17.88	13.89	6.089	1.151
132.0	29.64	23.26	9.196	1.508	5.590	12.67	16.45	12.87	5.597	1.206
135.0	27.33	19.63	8.215	1.578	5.158	11.61	15.11	11.84	5.165	1.276
138.0	24.81	16.97	7.311	1.634	4.655	10.49	13.80	10.80	4.692	1.347
141.0	22.34	14.53	6.476	1.689	4.243	9.359	12.50	9.518	4.265	1.407
144.0	19.80	12.41	5.742	1.729	3.876	8.229	11.06	8.476	3.944	1.442
147.0	17.33	10.63	5.073	1.769	3.409	7.215	9.700	7.481	3.602	1.522
150.0	14.90	8.921	4.260	1.847	2.997	6.380	8.499	6.636	3.150	1.598
153.0	12.74	7.444	3.555	1.853	2.620	5.692	7.383	5.897	2.692	1.643
156.0	10.73	6.229	3.237	1.860	2.248	4.948	6.269	5.249	2.301	1.663
159.0	8.797	5.159	2.981	1.870	1.991	3.973	5.489	4.345	1.954	1.719
162.0	7.042	4.300	2.825	1.885	1.905	3.113	4.474	3.521	1.819	1.744
165.0	5.675	3.607	2.725	1.895	1.850	2.396	3.474	2.636	1.794	1.789
168.0	3.104	3.045	2.474	1.901	1.784	2.015	1.960	2.157	1.724	1.805
171.0	2.525	2.602	2.227	1.901	1.739	1.839	1.799	1.950	1.663	1.814
174.0	2.057	2.166	2.106	1.900	1.669	1.734	1.745	1.830	1.633	1.829
177.0	1.960	2.056	2.051	1.900	1.628	1.643	1.724	1.774	1.623	1.889
180.0	1.729	1.749	1.940	1.895	1.895	1.920	1.679	1.764	1.865	1.895
G/C	300.0	330.0								
0.0	61.67	61.68								
3.0	61.88	62.18								
6.0	61.96	62.70								
9.0	61.93	63.03								
12.0	61.67	63.17								
15.0	61.14	63.33								
18.0	60.23	63.73								
21.0	59.06	64.15								
24.0	57.95	63.74								
27.0	56.94	62.74								
30.0	56.10	61.94								

C Range: 0 - 360DEG
 C Interval: 30.0DEG
 Test Speed: HIGH
 Temperature: 25.3DEG
 Operators: LPC
 Test Date: 2022-01-11

γ Range: 0 - 180DEG
 γ Interval: 1.0DEG
 Test System: EVERFINE GO-2000B_V1 SYSTEM V2.0.269
 Humidity: 65.0%
 Test Distance: 9.200m [K=1.0000]
 Remarks:

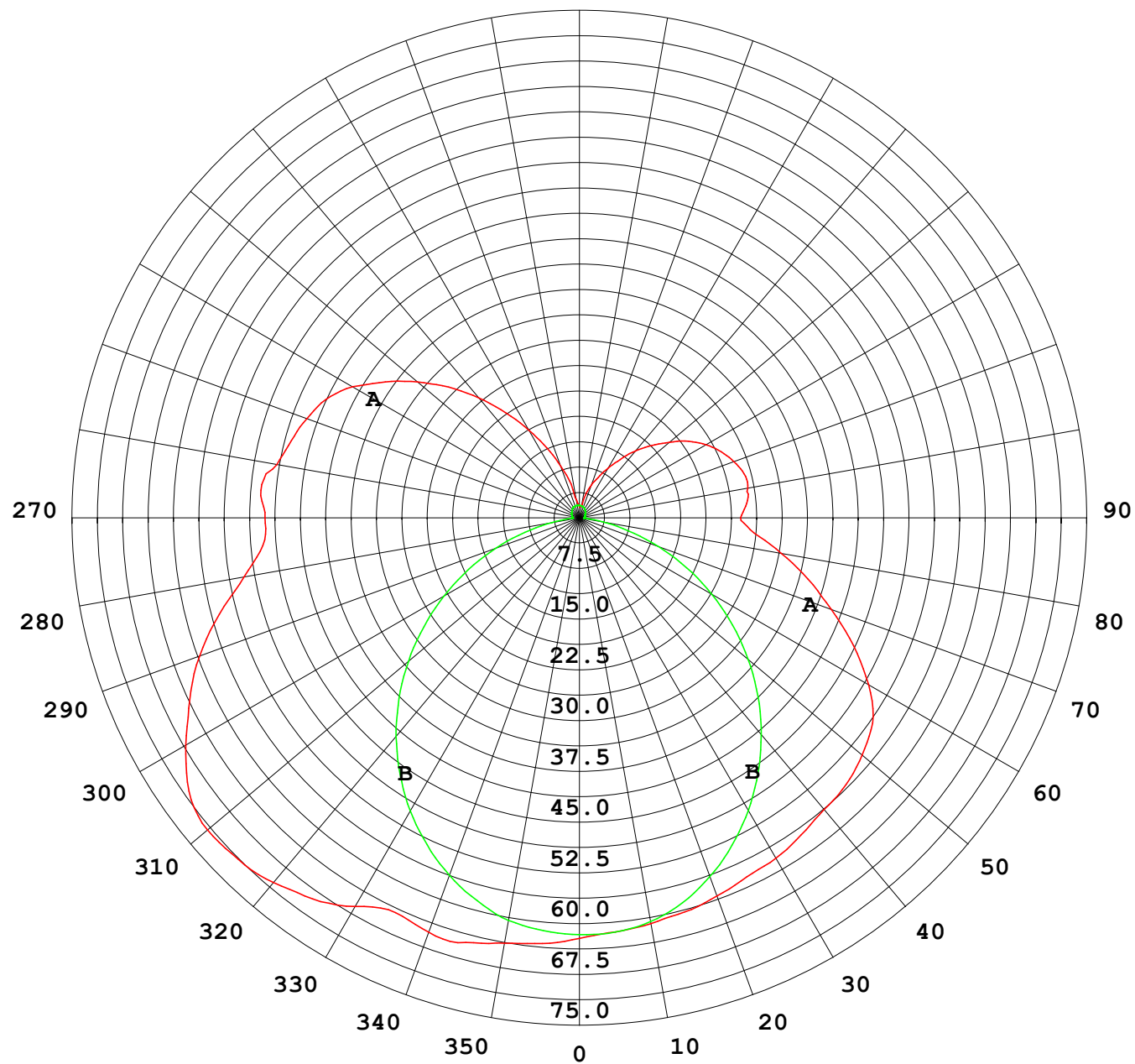
Photometric Data Table [cd]

33.0	55.01	61.68
36.0	53.43	62.34
39.0	51.56	63.01
42.0	49.61	63.22
45.0	47.63	63.37
48.0	45.56	63.41
51.0	43.54	63.23
54.0	41.28	62.55
57.0	38.92	61.38
60.0	36.70	60.06
63.0	34.85	58.45
66.0	33.07	56.40
69.0	31.33	54.03
72.0	29.54	51.61
75.0	27.51	49.15
78.0	25.41	46.45
81.0	23.21	43.45
84.0	21.08	40.73
87.0	19.07	38.47
90.0	17.73	37.21
93.0	17.33	36.56
96.0	17.16	36.86
99.0	17.05	34.10
102.0	16.13	34.98
105.0	14.96	35.42
108.0	14.87	35.52
111.0	14.71	35.46
114.0	13.84	34.98
117.0	13.67	32.81
120.0	12.68	30.12
123.0	11.90	28.83
126.0	11.08	27.81
129.0	9.962	25.08
132.0	8.846	21.88
135.0	7.701	19.13
138.0	6.761	16.41
141.0	5.973	13.75
144.0	5.255	11.70
147.0	4.611	10.21
150.0	3.974	8.607
153.0	3.733	7.251
156.0	3.502	6.040
159.0	3.271	4.948
162.0	3.020	4.114
165.0	2.784	3.499
168.0	2.532	3.067
171.0	2.221	2.700
174.0	2.080	2.258
177.0	2.000	2.066
180.0	1.915	1.925

C Range: 0 - 360DEG
 C Interval: 30.0DEG
 Test Speed: HIGH
 Temperature: 25.3DEG
 Operators: LPC
 Test Date: 2022-01-11

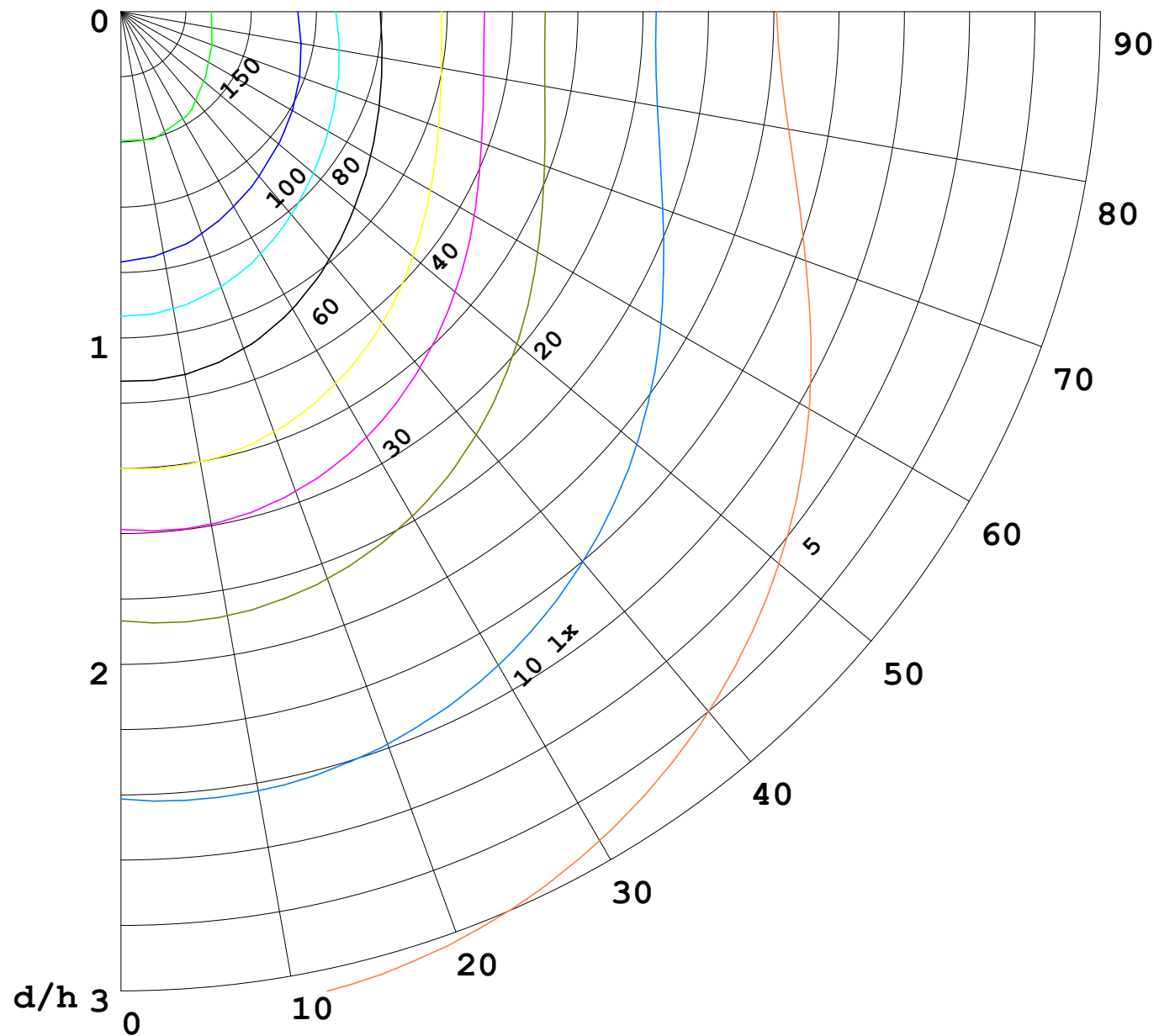
γ Range: 0 - 180DEG
 γ Interval: 1.0DEG
 Test System: EVERFINE GO-2000B_V1 SYSTEM V2.0.269
 Humidity: 65.0%
 Test Distance: 9.200m [K=1.0000]
 Remarks:

I (cd)



1000 lm

$\kappa = 1$



F = 5000 lm
 K = 0.7
 Hcc = 0.0 m
 Hfc = 0.0 m
 Eave = 100 lx

	Pcc	Pw	Pfc
—	70	50	30
—	50	30	20

