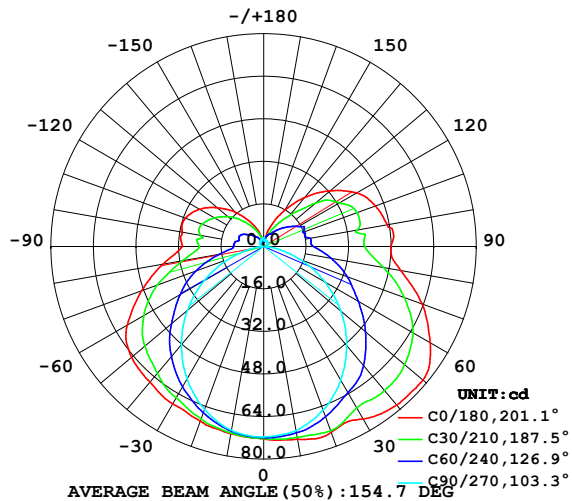


LUMINAIRE PHOTOMETRIC TEST REPORT

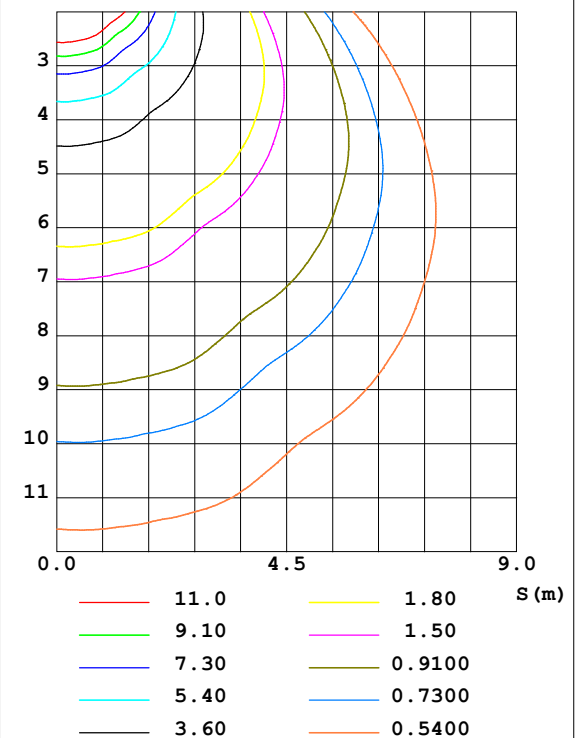
Test:U:24.00V I:0.3318A P:7.963W PF:1.000 Lamp Flux:348.235x1 lm		
NAME: SF18-24V-2835-120-2200+5700-80-5700	TYPE: 硅胶	WEIGHT:
DIM.: 16.5*16.5MM	SPEC.:	SERIAL No.:2022011002
MFR.: OLYMPIA	SUR.:1*0.0165	PROTECTION ANGLE:

DATA OF LAMP		PHOTOMETRIC DATA Eff: 49.69 lm/W			
MODEL	2835	I _{max} (cd)	78.21	S/MH (C0/180)	1.63
NOMINAL POWER (W)	8	LOR (%)	113.6	S/MH (C90/270)	1.21
RATED VOLTAGE (V)	24	TOTAL FLUX (lm)	395.71	η UP, DN (C0-180)	15.0, 42.2
NOMINAL FLUX (lm)	348.235	CIE CLASS	SEMI-D.	η UP, DN (C180-360)	14.7, 41.8
LAMPS INSIDE	1	η up (%)	29.6	CIBSE SHR NOM	1.50
TEST VOLTAGE (V)	24.0	η down (%)	84.0	CIBSE SHR MAX	1.55

LUMINOUS INTENSITY DISTRIBUTION DIAGRAM



C0 PLANE ISOLUX DIAGRAM (UNIT:lx)



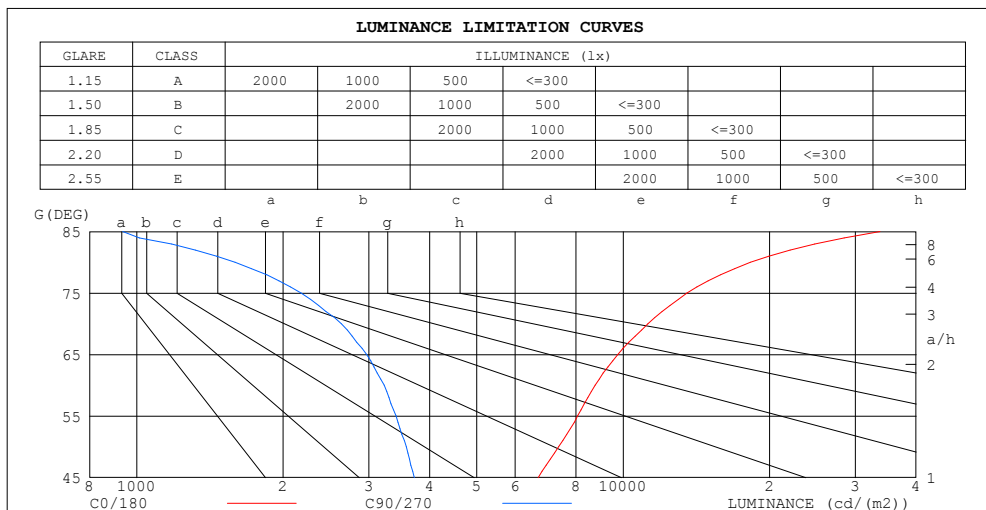
C Range: 0 - 360DEG
C Interval: 30.0DEG
Test Speed: HIGH
Temperature: 25.3DEG
Operators: LPC
Test Date: 2022-01-10

γ Range: 0 - 180DEG
γ Interval: 1.0DEG
Test System: EVERFINE GO-2000B_V1 SYSTEM V2.0.269
Humidity: 65.0%
Test Distance: 9.200m [K=1.0000]
Remarks:

ZONAL FLUX DIAGRAM AND LUMINANCE LIMITATION CURVES

ZONAL FLUX DIAGRAM:

γ	C0	C45	C90	C135	C180	C225	C270	C315	γ	Φ zone	Φ total	%lum, lamp
10	73.61	72.06	70.32	69.73	71.53	70.96	70.23	71.52	0- 10	6.830	6.830	1.73,1.96
20	74.37	70.96	65.48	66.38	69.94	67.79	65.17	69.59	10- 20	19.83	26.66	6.74,7.66
30	74.94	66.78	58.12	61.93	68.42	63.42	57.63	67.40	20- 30	30.83	57.49	14.5,16.5
40	77.86	64.61	48.58	56.48	66.56	58.17	48.20	63.27	30- 40	39.42	96.91	24.5,27.8
50	78.21	59.60	37.98	48.99	64.88	51.87	37.47	60.08	40- 50	44.75	141.7	35.8,40.7
60	72.31	52.99	26.61	39.72	59.27	44.20	25.90	54.97	50- 60	45.99	187.7	47.4,53.9
70	63.42	44.87	14.87	28.76	48.94	34.95	14.15	48.80	60- 70	42.32	230.0	58.1,66
80	52.35	35.74	4.562	20.03	38.46	23.96	3.776	41.44	70- 80	35.01	265.0	67,76.1
90	47.80	28.36	1.071	19.63	30.60	17.89	0.7941	32.83	80- 90	27.57	292.5	73.9,84
100	47.21	26.86	1.272	17.80	31.19	17.51	0.9845	27.18	90-100	24.58	317.1	80.1,91.1
110	44.68	26.49	1.387	15.51	31.32	17.30	1.101	28.08	100-110	22.62	339.7	85.9,97.6
120	40.43	24.02	1.598	12.41	27.95	15.31	1.472	27.52	110-120	20.22	360.0	91,103
130	32.60	18.43	1.779	8.786	22.70	12.19	1.799	23.46	120-130	15.70	375.7	94.9,108
140	24.15	11.68	1.970	5.686	17.05	8.847	2.070	16.52	130-140	10.16	385.8	97.5,111
150	15.60	7.286	2.287	3.396	11.19	5.896	2.523	11.47	140-150	5.735	391.6	99,112
160	8.360	4.744	2.327	2.070	6.630	3.565	2.849	7.804	150-160	2.786	394.3	99.7,113
170	2.655	3.108	2.407	1.870	2.230	2.119	3.121	5.669	160-170	1.096	395.4	99.9,114
180	1.975	2.073	2.382	3.350	1.975	1.983	3.367	3.325	170-180	0.2652	395.7	100,114
DEG	LUMINOUS INTENSITY:cd									UNIT:lm		



LUMINANCE cd/(m2)		
G (DEG)	C0/180	C90/270
85	33750	936
80	18271	1592
75	13534	2178
70	11238	2635
65	9754	2971
60	8765	3225
55	8059	3413
50	7374	3581
45	6688	3720

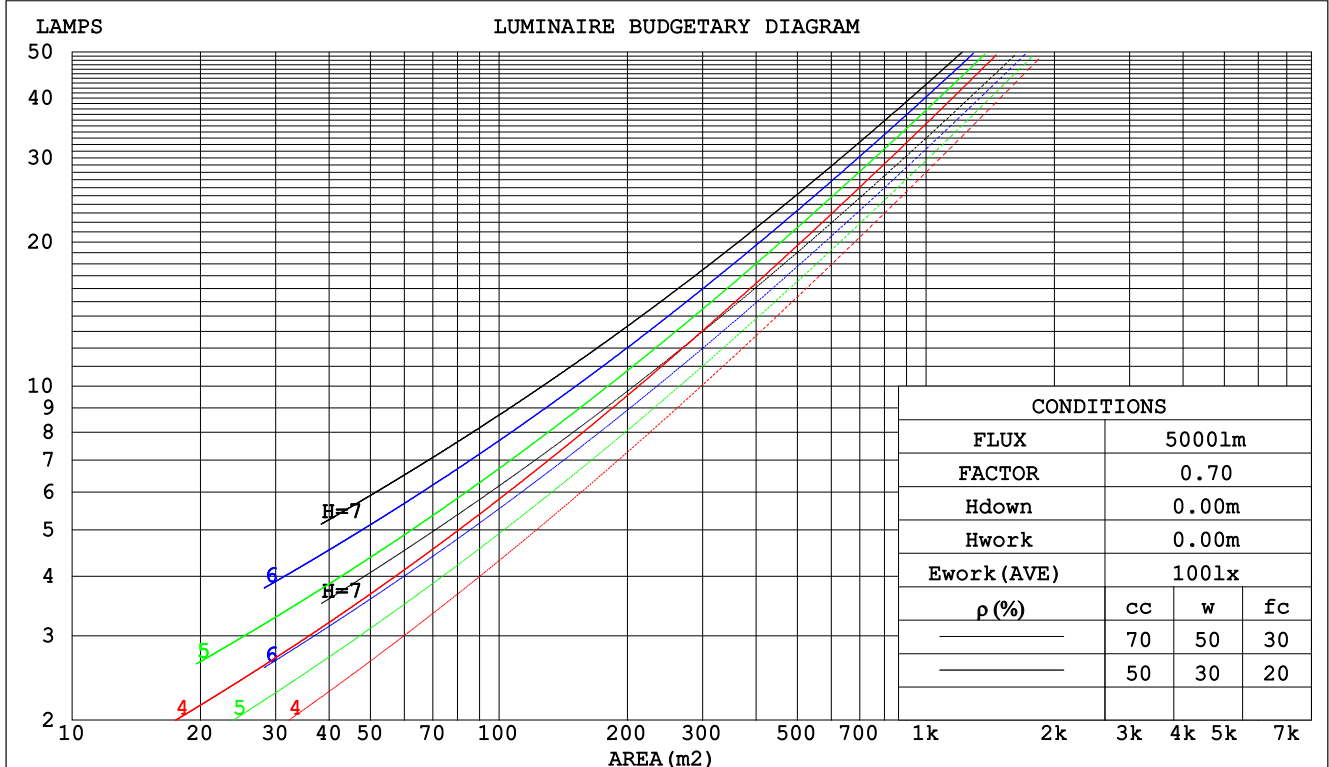
C Range: 0 - 360DEG
C Interval: 30.0DEG
Test Speed: HIGH
Temperature:25.3DEG
Operators:LPC
Test Date:2022-01-10

γ Range: 0 - 180DEG
 γ Interval: 1.0DEG
Test System:EVERFINE GO-2000B_V1 SYSTEM V2.0.269
Humidity:65.0%
Test Distance:9.200m [K=1.0000]
Remarks:

CU AND LUMINAIRE BUDGETARY ESTIMATE DIAGRAM

Test:U:24.00V I:0.3318A P:7.963W PF:1.000 Lamp Flux:348.235x1 lm		
NAME: SF18-24V-2835-120-2200+5700-80-5700	TYPE: 硅胶	WEIGHT:
DIM.: 16.5*16.5MM	SPEC.:	SERIAL No.:2022011002
MFR.: OLYMPIA	SUR.:1*0.0165	PROTECTION ANGLE:

pcc	80%			70%			50%			30%			10%			0
pw	50%	30%	10%	50%	30%	10%	50%	30%	10%	50%	30%	10%	50%	30%	10%	0
pfc	20%			20%			20%			20%			20%			0
RCR	RCR:Room Cavity Ratio						Coefficients of Utilization(CU)									
0.0	1.28	1.28	1.28	1.22	1.22	1.22	1.10	1.10	1.10	.99	.99	.99	.89	.89	.89	.84
1.0	1.07	1.01	.95	1.01	.96	.91	.91	.87	.83	.81	.78	.75	.73	.70	.68	.63
2.0	.91	.82	.75	.87	.79	.72	.78	.71	.66	.69	.64	.60	.62	.58	.54	.50
3.0	.79	.69	.61	.75	.66	.58	.67	.60	.54	.60	.54	.49	.54	.49	.45	.41
4.0	.69	.59	.51	.66	.56	.49	.59	.51	.45	.53	.46	.41	.47	.42	.37	.34
5.0	.61	.51	.43	.58	.49	.41	.53	.44	.38	.47	.40	.35	.42	.36	.32	.29
6.0	.55	.44	.37	.52	.42	.35	.47	.39	.33	.42	.35	.30	.38	.32	.28	.25
7.0	.49	.39	.32	.47	.38	.31	.43	.35	.29	.38	.32	.26	.34	.29	.24	.21
8.0	.45	.35	.28	.43	.34	.27	.39	.31	.25	.35	.28	.23	.32	.26	.22	.19
9.0	.41	.31	.25	.39	.30	.24	.35	.28	.23	.32	.26	.21	.29	.23	.19	.17
10.0	.37	.28	.22	.36	.27	.22	.33	.25	.20	.30	.23	.19	.27	.21	.17	.15



C Range: 0 - 360DEG
C Interval: 30.0DEG
Test Speed: HIGH
Temperature:25.3DEG
Operators:LPC
Test Date:2022-01-10

γ Range: 0 - 180DEG
γ Interval: 1.0DEG
Test System:EVERFINE GO-2000B_V1 SYSTEM V2.0.269
Humidity:65.0%
Test Distance:9.200m [K=1.0000]
Remarks:

WEC AND CCEC

Test:U:24.00V I:0.3318A P:7.963W PF:1.000 Lamp Flux:348.235x1 lm					
NAME: SF18-24V-2835-120-2200+5700-80-5700			TYPE:硅胶		WEIGHT:
DIM.: 16.5*16.5MM			SPEC.:		SERIAL No.:2022011002
MFR.: OLYMPIA			SUR.:1*0.0165		PROTECTION ANGLE:

pcc	80%			70%			50%			30%			10%			0	
pw	50%	30%	10%	50%	30%	10%	50%	30%	10%	50%	30%	10%	50%	30%	10%	0	
pfc	20%			20%			20%			20%			20%			0	
RCR	RCR:Room Cavity Ratio						Wall Exitance Coefficients(WEC)										
0.0																	
1.0	.430	.245	.077	.413	.236	.075	.381	.218	.070	.351	.202	.065	.324	.188	.060		
2.0	.373	.205	.063	.358	.197	.061	.328	.183	.057	.301	.169	.053	.276	.156	.049		
3.0	.332	.177	.053	.318	.170	.051	.291	.158	.048	.267	.146	.045	.244	.135	.042		
4.0	.299	.155	.046	.286	.150	.044	.262	.139	.042	.240	.129	.039	.219	.119	.036		
5.0	.272	.139	.040	.260	.134	.039	.238	.124	.037	.218	.115	.034	.199	.106	.032		
6.0	.249	.125	.036	.239	.121	.035	.219	.112	.033	.200	.104	.030	.182	.096	.028		
7.0	.230	.114	.032	.220	.110	.031	.202	.102	.029	.184	.094	.027	.168	.087	.026		
8.0	.213	.104	.029	.204	.101	.028	.187	.094	.027	.171	.087	.025	.156	.080	.023		
9.0	.199	.096	.027	.191	.093	.026	.175	.086	.024	.160	.080	.023	.146	.074	.021		
10.0	.186	.089	.025	.178	.086	.024	.164	.080	.023	.150	.074	.021	.137	.069	.020		

pcc	80%			70%			50%			30%			10%			0
pw	50%	30%	10%	50%	30%	10%	50%	30%	10%	50%	30%	10%	50%	30%	10%	0
pfc	20%			20%			20%			20%			20%			0
RCR	RCR:Room Cavity Ratio						Ceiling Cavity Exitance Coefficients (CCEC)									
0.0	.442	.442	.442	.378	.378	.378	.258	.258	.258	.148	.148	.148	.047	.047	.047	
1.0	.438	.404	.374	.375	.347	.322	.256	.239	.223	.148	.138	.129	.047	.044	.042	
2.0	.430	.379	.335	.369	.326	.290	.253	.226	.202	.146	.131	.119	.047	.042	.039	
3.0	.422	.360	.311	.362	.311	.270	.248	.216	.189	.143	.126	.112	.046	.041	.037	
4.0	.414	.346	.295	.355	.299	.256	.244	.209	.181	.141	.122	.107	.045	.040	.035	
5.0	.405	.336	.284	.348	.290	.247	.240	.203	.175	.139	.119	.104	.045	.039	.034	
6.0	.397	.327	.276	.341	.283	.241	.235	.198	.170	.136	.116	.101	.044	.038	.033	
7.0	.389	.319	.271	.335	.277	.236	.231	.194	.167	.134	.114	.099	.043	.037	.033	
8.0	.381	.313	.266	.328	.272	.232	.227	.191	.165	.132	.112	.098	.043	.037	.032	
9.0	.374	.308	.263	.323	.267	.229	.223	.188	.163	.130	.111	.097	.042	.036	.032	
10.0	.368	.303	.260	.317	.263	.227	.220	.185	.161	.128	.110	.096	.042	.036	.032	

C Range: 0 - 360DEG
C Interval: 30.0DEG
Test Speed: HIGH
Temperature:25.3DEG
Operators:LPC
Test Date:2022-01-10

γ Range: 0 - 180DEG
γ Interval: 1.0DEG
Test System:EVERFINE GO-2000B_V1 SYSTEM V2.0.269
Humidity:65.0%
Test Distance:9.200m [K=1.0000]
Remarks:

Uncorrected UGR Table

Test:U:24.00V I:0.3318A P:7.963W PF:1.000 Lamp Flux:348.235x1 lm											
NAME: SF18-24V-2835-120-2200+5700-80-5700						TYPE:硅胶		WEIGHT:			
DIM.: 16.5*16.5MM						SPEC.:		SERIAL No.:2022011002			
MFR.: OLYMPIA						SUR.:1*0.0165		PROTECTION ANGLE:			
ceiling/cavity	0.7	0.7	0.5	0.5	0.3	0.7	0.7	0.5	0.5	0.3	
walls	0.5	0.3	0.5	0.3	0.3	0.5	0.3	0.5	0.3	0.3	
working plane	0.2	0.2	0.2	0.2	0.2	0.2	0.2	0.2	0.2	0.2	
Room dimensions	Viewed crosswise					Viewed endwise					
x = 2H y = 2H	19.5	20.8	20.1	21.4	22.2	15.6	16.9	16.2	17.5	18.2	
	3H	22.3	23.5	23.0	24.1	24.9	17.0	18.2	17.7	18.8	19.6
	4H	23.8	24.9	24.5	25.6	26.4	17.5	18.7	18.2	19.3	20.1
	6H	25.4	26.4	26.1	27.1	27.9	17.9	18.9	18.5	19.6	20.4
	8H	26.3	27.3	26.9	28.0	28.8	17.9	19.0	18.6	19.6	20.5
	12H	27.3	28.3	28.0	29.0	29.8	18.0	18.9	18.7	19.6	20.5
4H	2H	20.0	21.1	20.7	21.8	22.6	17.3	18.4	17.9	19.1	19.8
	3H	23.1	24.0	23.8	24.7	25.6	19.0	20.0	19.7	20.7	21.5
	4H	24.8	25.6	25.5	26.4	27.2	19.7	20.6	20.5	21.4	22.2
	6H	26.6	27.3	27.3	28.1	29.0	20.3	21.1	21.1	21.9	22.7
	8H	27.5	28.3	28.3	29.0	30.0	20.5	21.2	21.3	22.0	22.9
	12H	28.7	29.4	29.5	30.2	31.1	20.6	21.3	21.4	22.1	23.0
8H	4H	25.0	25.8	25.8	26.5	27.4	21.2	22.0	22.0	22.7	23.6
	6H	27.2	27.8	27.9	28.6	29.5	22.3	22.9	23.0	23.7	24.6
	8H	28.4	28.9	29.2	29.7	30.7	22.7	23.3	23.5	24.1	25.0
	12H	29.8	30.3	30.6	31.1	32.1	23.0	23.5	23.9	24.4	25.3
12H	4H	25.0	25.7	25.8	26.5	27.4	21.7	22.4	22.5	23.1	24.1
	6H	27.2	27.8	28.0	28.6	29.6	23.0	23.6	23.8	24.4	25.3
	8H	28.6	29.1	29.4	29.9	30.9	23.6	24.1	24.5	25.0	25.9
Variations with the observer position at spacings:											
S = 1.0H	+ 0.1 / - 0.1					+ 0.1 / - 0.1					
1.5H	+ 0.2 / - 0.3					+ 0.2 / - 0.3					
2.0H	+ 0.2 / - 0.3					+ 0.2 / - 0.4					

CIE Pub.117 Corrected 348.2 lm Total Lamp Luminous Flux. (8log(F/F0) = -3.7)

C Range: 0 - 360DEG
C Interval: 30.0DEG
Test Speed: HIGH
Temperature:25.3DEG
Operators:LPC
Test Date:2022-01-10

γ Range: 0 - 180DEG
γ Interval: 1.0DEG
Test System:EVERFINE GO-2000B_V1 SYSTEM V2.0.269
Humidity:65.0%
Test Distance:9.200m [K=1.0000]
Remarks:

UTILIZATION FACTORS TABLE

Test:U:24.00V I:0.3318A P:7.963W PF:1.000 Lamp Flux:348.235x1 lm		
NAME: SF18-24V-2835-120-2200+5700-80-5700	TYPE: 硅胶	WEIGHT:
DIM.: 16.5*16.5MM	SPEC.:	SERIAL No.:2022011002
MFR.: OLYMPIA	SUR.:1*0.0165	PROTECTION ANGLE:

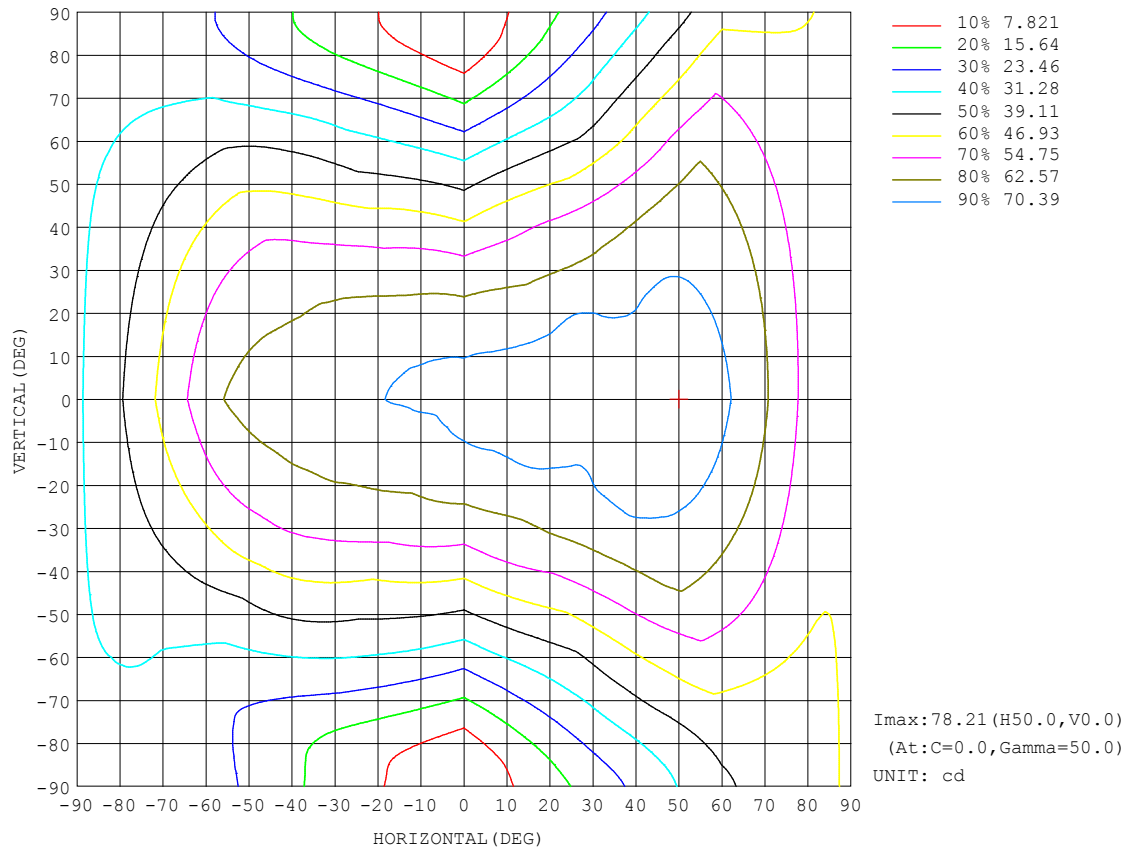
REFLECTANCE										
Ceiling	0.8	0.8	0.8	0.7	0.7	0.7	0.5	0.5	0.5	0
Walls	0.7	0.5	0.3	0.7	0.5	0.3	0.7	0.5	0.3	0
Working plane	0.2	0.2	0.2	0.2	0.2	0.2	0.2	0.2	0.2	0
ROOM INDEX	UTILIZATION FACTORS (PERCENT) $k(RI) \times RCR = 5$									
$k = 0.60$	51	37	29	50	36	28	47	35	28	20
0.80	62	47	37	59	46	37	56	43	36	26
1.00	70	55	46	68	54	45	63	54	43	32
1.25	78	64	54	75	62	52	69	58	50	38
1.50	84	70	60	81	68	58	74	63	55	42
2.00	93	80	70	88	77	68	81	71	64	49
2.50	98	86	77	93	83	74	85	76	69	53
3.00	102	91	83	97	88	80	88	81	74	57
4.00	108	98	91	102	94	87	93	86	81	62
5.00	111	103	96	106	98	92	95	90	85	65
ROOM INDEX	UF(total)									Direct
According to DIN EN 13032-2 2004			Suspended					SHRNOM = 1.25		

C Range: 0 - 360DEG
 C Interval: 30.0DEG
 Test Speed: HIGH
 Temperature:25.3DEG
 Operators:LPC
 Test Date:2022-01-10

γ Range: 0 - 180DEG
 γ Interval: 1.0DEG
 Test System:EVERFINE GO-2000B_V1 SYSTEM V2.0.269
 Humidity:65.0%
 Test Distance:9.200m [K=1.0000]
 Remarks:

ISOCANDELA DIAGRAM

Test:U:24.00V I:0.3318A P:7.963W PF:1.000 Lamp Flux:348.235x1 lm		
NAME: SF18-24V-2835-120-2200+5700-80-5700	TYPE: 硅胶	WEIGHT:
DIM.: 16.5*16.5MM	SPEC.:	SERIAL No.:2022011002
MFR.: OLYMPIA	SUR.:1*0.0165	PROTECTION ANGLE:

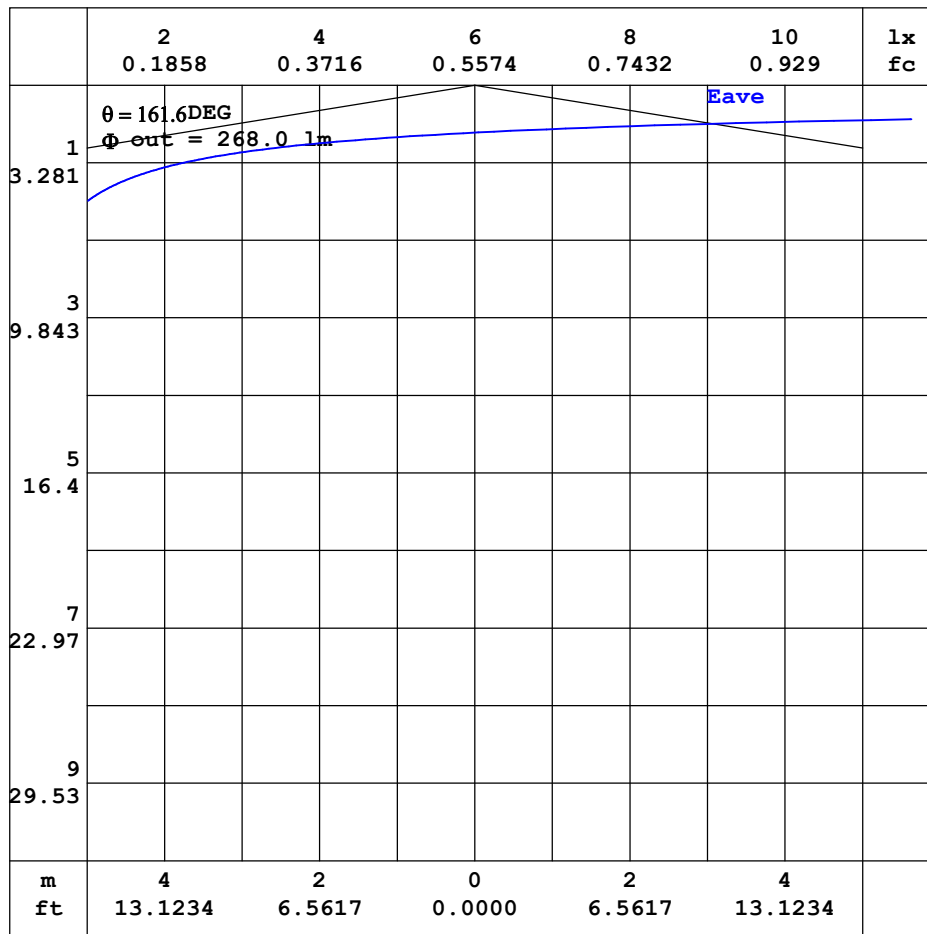


C Range: 0 - 360DEG
C Interval: 30.0DEG
Test Speed: HIGH
Temperature: 25.3DEG
Operators: LPC
Test Date: 2022-01-10

γ Range: 0 - 180DEG
 γ Interval: 1.0DEG
Test System: EVERFINE GO-2000B_V1 SYSTEM V2.0.269
Humidity: 65.0%
Test Distance: 9.200m [K=1.0000]
Remarks:

AAI CURVES

Test:U:24.00V I:0.3318A P:7.963W PF:1.000 Lamp Flux:348.235x1 lm		
NAME: SF18-24V-2835-120-2200+5700-80-5700	TYPE: 硅胶	WEIGHT:
DIM.: 16.5*16.5MM	SPEC.:	SERIAL No.:2022011002
MFR.: OLYMPIA	SUR.:1*0.0165	PROTECTION ANGLE:



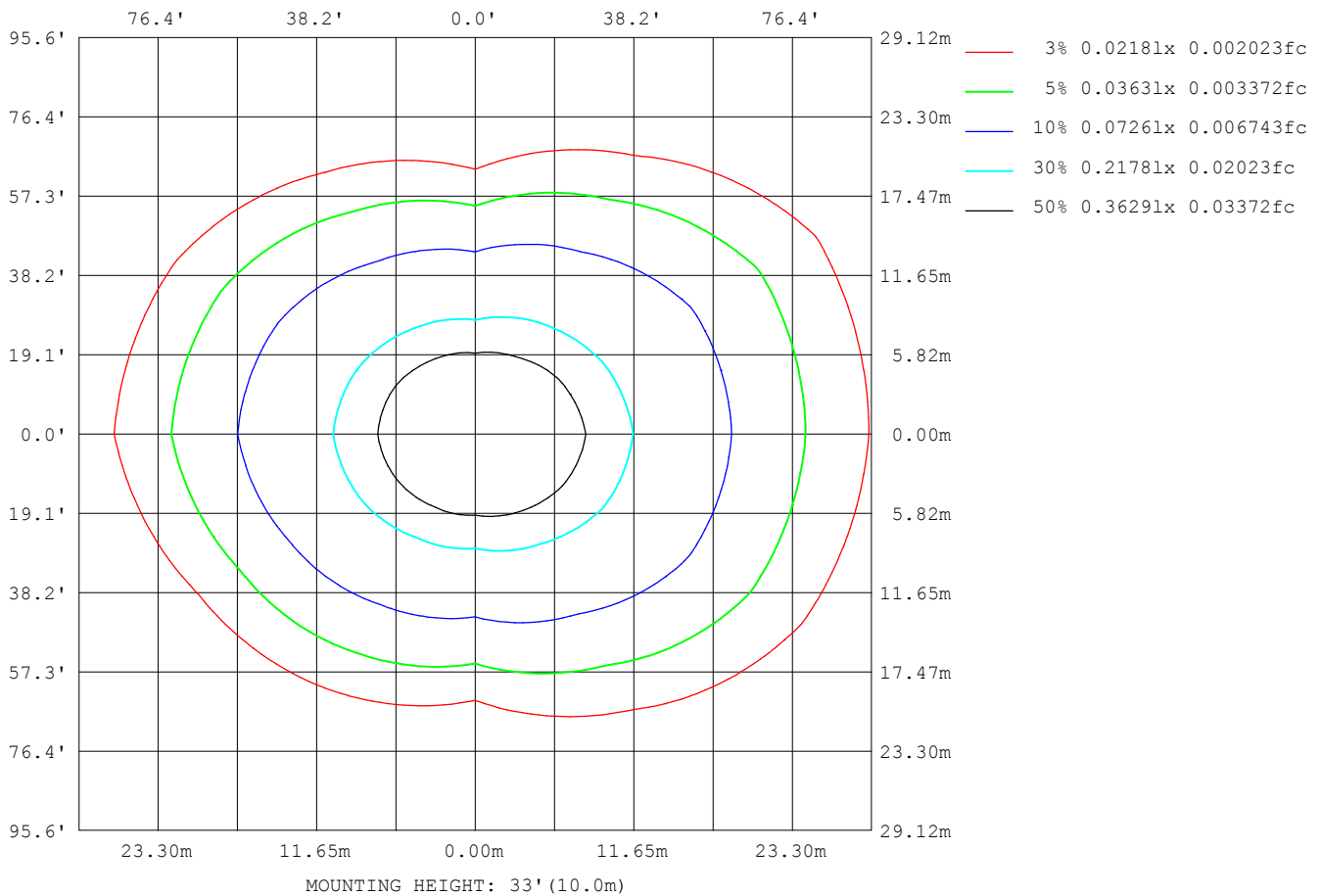
Note: The Curves indicate the illuminated area and the average illumination when the luminaire is at different distance.

C Range: 0 - 360DEG
 C Interval: 30.0DEG
 Test Speed: HIGH
 Temperature: 25.3DEG
 Operators: LPC
 Test Date: 2022-01-10

γ Range: 0 - 180DEG
 γ Interval: 1.0DEG
 Test System: EVERFINE GO-2000B_V1 SYSTEM V2.0.269
 Humidity: 65.0%
 Test Distance: 9.200m [K=1.0000]
 Remarks:

ISOLUX DIAGRAM

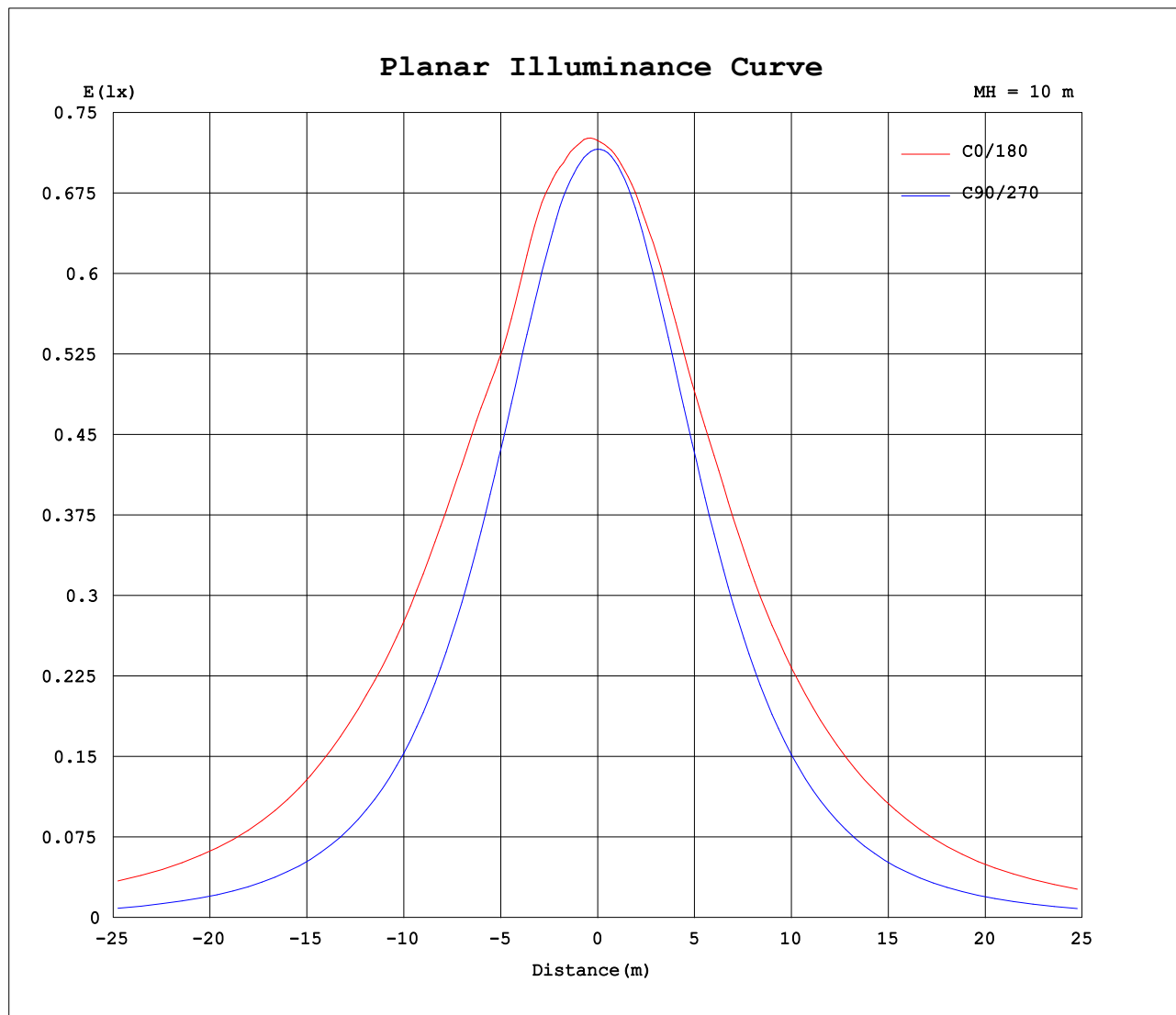
Test:U:24.00V I:0.3318A P:7.963W PF:1.000 Lamp Flux:348.235x1 lm		
NAME: SF18-24V-2835-120-2200+5700-80-5700	TYPE: 硅胶	WEIGHT:
DIM.: 16.5*16.5MM	SPEC.:	SERIAL No.:2022011002
MFR.: OLYMPIA	SUR.:1*0.0165	PROTECTION ANGLE:



C Range: 0 - 360DEG
C Interval: 30.0DEG
Test Speed: HIGH
Temperature:25.3DEG
Operators:LPC
Test Date:2022-01-10

γ Range: 0 - 180DEG
 γ Interval: 1.0DEG
Test System:EVERFINE GO-2000B_V1 SYSTEM V2.0.269
Humidity:65.0%
Test Distance:9.200m [K=1.0000]
Remarks:

Planar Illuminance Curve



C Range: 0 - 360DEG
C Interval: 30.0DEG
Test Speed: HIGH
Temperature: 25.3DEG
Operators: LPC
Test Date: 2022-01-10

γ Range: 0 - 180DEG
 γ Interval: 1.0DEG
Test System: EVERFINE GO-2000B_V1 SYSTEM V2.0.269
Humidity: 65.0%
Test Distance: 9.200m [K=1.0000]
Remarks:

LUMINOUS DISTRIBUTION INTENSITY DATA

Test:U:24.00V I:0.3318A P:7.963W PF:1.000 Lamp Flux:348.235x1 lm		
NAME: SF18-24V-2835-120-2200+5700-80-5700	TYPE: 硅胶	WEIGHT:
DIM.: 16.5*16.5MM	SPEC.:	SERIAL No.:2022011002
MFR.: OLYMPIA	SUR.:1*0.0165	PROTECTION ANGLE:

Table--1

UNIT: cd

C (DEG) γ (DEG)	0	30	60	90	120	150	180	210	240	270	300	330						
0	72.4	72.3	71.9	71.6	71.4	71.5	72.4	72.3	71.9	71.6	71.4	71.5						
5	73.1	72.8	71.8	71.2	70.8	70.9	72.0	71.9	71.5	71.3	71.6	71.9						
10	73.6	72.9	71.2	70.3	69.8	69.6	71.5	71.3	70.6	70.2	71.0	72.0						
15	74.9	73.3	70.0	68.2	67.7	68.3	70.8	70.3	68.8	68.1	69.6	72.0						
20	74.4	73.8	68.2	65.5	65.3	67.4	69.9	69.0	66.6	65.2	67.3	71.8						
25	73.0	72.2	65.8	62.0	62.5	66.2	68.8	67.4	63.9	61.7	64.9	71.7						
30	74.9	70.1	63.5	58.1	59.7	64.2	68.4	65.8	61.1	57.6	62.6	72.2						
35	76.9	70.4	61.6	53.5	56.4	62.6	67.7	64.5	57.7	53.1	59.9	70.9						
40	77.9	70.7	58.5	48.6	52.3	60.7	66.6	62.3	54.1	48.2	57.9	68.6						
45	78.0	70.5	54.4	43.4	47.8	58.0	65.9	60.3	50.1	43.0	55.5	68.2						
50	78.2	69.2	50.0	38.0	43.4	54.6	64.9	58.4	45.4	37.5	51.6	68.6						
55	76.3	67.3	45.6	32.3	39.2	50.0	63.0	55.7	40.7	31.8	47.2	68.4						
60	72.3	64.9	41.1	26.6	34.7	44.8	59.3	52.0	36.4	25.9	42.7	67.2						
65	68.0	61.0	37.0	20.7	29.7	38.4	54.1	47.7	32.0	20.0	38.3	65.4						
70	63.4	56.2	33.5	14.9	24.4	33.1	48.9	42.6	27.3	14.2	34.5	63.1						
75	57.8	51.4	29.7	9.30	19.0	28.5	43.6	36.4	22.0	8.58	31.2	59.5						
80	52.3	45.7	25.8	4.56	14.5	25.6	38.5	31.0	16.9	3.78	27.8	55.0						
85	48.5	40.9	22.0	1.35	12.4	26.2	33.6	26.5	12.8	0.98	24.3	50.4						
90	47.8	38.0	18.7	1.07	12.0	27.3	30.6	24.4	11.4	0.79	20.9	44.7						
95	49.1	38.1	18.0	1.13	11.4	27.6	31.4	25.3	11.2	0.79	18.6	40.3						
100	47.2	35.7	18.0	1.27	10.8	24.8	31.2	24.1	10.9	0.98	18.7	35.6						
105	46.0	37.4	16.2	1.32	9.72	23.5	31.8	25.3	9.70	1.02	17.9	37.0						
110	44.7	37.4	15.6	1.39	9.34	21.7	31.3	24.6	9.97	1.10	17.6	38.6						
115	43.0	36.0	17.0	1.49	8.51	19.6	29.9	23.3	9.83	1.26	17.9	38.3						
120	40.4	32.9	15.1	1.60	7.31	17.5	28.0	21.5	9.16	1.47	17.3	37.8						
125	36.7	30.3	13.3	1.70	6.08	15.2	25.6	19.4	7.96	1.65	16.5	36.3						
130	32.6	25.4	11.5	1.78	4.79	12.8	22.7	17.4	6.93	1.80	14.9	32.1						
135	28.5	19.5	9.88	1.86	3.89	10.4	19.8	15.3	5.95	1.94	13.0	26.1						
140	24.2	15.2	8.20	1.97	3.10	8.27	17.0	12.7	5.00	2.07	11.3	21.8						
145	19.8	12.0	6.80	2.08	2.44	6.45	14.0	10.5	4.26	2.22	9.62	18.5						
150	15.6	8.97	5.60	2.29	2.19	4.61	11.2	8.46	3.33	2.52	7.96	15.0						
155	11.9	6.68	5.19	2.30	2.06	3.00	8.64	6.83	2.52	2.70	7.36	11.9						
160	8.36	4.87	4.61	2.33	1.87	2.27	6.63	5.01	2.12	2.85	6.68	8.92						
165	5.85	3.52	4.00	2.38	1.87	2.01	4.06	3.22	2.00	3.00	5.98	6.97						
170	2.66	2.84	3.37	2.41	1.86	1.87	2.23	2.34	1.90	3.12	5.37	5.97						
175	2.12	2.29	2.81	2.41	1.85	1.85	1.99	2.08	1.85	3.23	4.63	4.88						
180	1.98	1.99	2.16	2.38	3.49	3.21	1.98	1.98	1.99	3.37	3.41	3.24						

C Range: 0 - 360DEG
C Interval: 30.0DEG
Test Speed: HIGH
Temperature:25.3DEG
Operators:LPC
Test Date:2022-01-10

γ Range: 0 - 180DEG
γ Interval: 1.0DEG
Test System:EVERFINE GO-2000B_V1 SYSTEM V2.0.269
Humidity:65.0%
Test Distance:9.200m [K=1.0000]
Remarks:

Photometric Data Table [cd]

G/C	0.0	30.0	60.0	90.0	120.0	150.0	180.0	210.0	240.0	270.0
0.0	72.41	72.28	71.94	71.59	71.36	71.49	72.41	72.28	71.94	71.59
3.0	72.91	72.60	71.93	71.43	71.06	71.04	72.09	72.09	71.76	71.56
6.0	73.14	72.86	71.68	71.06	70.63	70.74	71.88	71.80	71.36	71.19
9.0	73.54	72.88	71.33	70.53	70.08	69.90	71.60	71.45	70.84	70.55
12.0	74.18	72.97	70.90	69.58	69.13	69.19	71.23	70.88	69.95	69.49
15.0	74.89	73.28	70.01	68.23	67.74	68.28	70.83	70.29	68.75	68.07
18.0	74.94	73.63	68.97	66.62	66.39	67.64	70.49	69.72	67.47	66.41
21.0	74.03	73.70	67.70	64.90	64.76	67.33	69.71	68.67	66.05	64.54
24.0	73.21	72.71	66.25	62.81	63.03	66.56	69.05	67.78	64.45	62.40
27.0	73.42	71.25	64.72	60.59	61.30	65.37	68.44	66.62	62.75	60.15
30.0	74.94	70.08	63.48	58.12	59.68	64.19	68.42	65.78	61.05	57.63
33.0	76.21	69.95	62.47	55.37	57.80	63.16	68.19	65.15	59.08	54.96
36.0	77.10	70.58	61.17	52.49	55.64	62.23	67.52	64.13	57.01	52.15
39.0	77.66	70.76	59.22	49.57	53.16	61.05	66.72	62.70	54.76	49.19
42.0	78.02	70.70	56.89	46.57	50.46	59.85	66.38	61.33	52.59	46.14
45.0	78.03	70.45	54.37	43.40	47.81	58.03	65.91	60.25	50.13	43.02
48.0	78.18	69.85	51.76	40.17	45.16	56.05	65.42	59.19	47.35	39.70
51.0	78.05	68.86	49.12	36.84	42.59	53.72	64.58	57.95	44.41	36.34
54.0	76.96	67.77	46.48	33.42	40.07	50.89	63.45	56.38	41.54	32.94
57.0	74.81	66.45	43.73	29.94	37.39	47.93	61.84	54.28	38.89	29.45
60.0	72.31	64.92	41.05	26.61	34.66	44.78	59.27	52.04	36.36	25.90
63.0	69.65	62.72	38.52	23.03	31.74	41.04	56.12	49.57	33.80	22.43
66.0	67.09	60.12	36.32	19.52	28.70	37.31	53.02	46.73	31.05	18.89
69.0	64.49	57.21	34.22	16.02	25.50	34.17	49.98	43.75	28.27	15.30
72.0	61.26	54.29	32.00	12.49	22.24	31.10	46.70	40.16	25.14	11.89
75.0	57.80	51.40	29.71	9.300	18.99	28.49	43.61	36.45	21.97	8.583
78.0	54.44	48.03	27.34	6.350	16.07	26.45	40.49	33.04	18.86	5.512
81.0	51.43	44.65	24.99	3.763	13.85	25.65	37.45	30.04	15.93	2.981
84.0	49.08	41.78	22.68	1.745	12.55	26.07	34.53	27.29	13.46	1.110
87.0	47.96	39.41	20.51	1.125	12.30	26.59	32.12	25.16	11.72	0.8348
90.0	47.80	38.02	18.70	1.071	11.98	27.29	30.60	24.37	11.41	0.7941
93.0	48.75	37.78	17.93	1.101	11.61	27.72	31.04	24.85	11.32	0.7941
96.0	49.07	38.34	17.98	1.136	11.23	27.46	31.50	25.48	11.14	0.7941
99.0	47.47	35.05	17.99	1.212	10.90	25.00	31.08	23.61	10.98	0.9240
102.0	46.73	36.96	16.63	1.297	10.16	24.22	31.46	24.79	9.987	1.005
105.0	46.04	37.42	16.16	1.322	9.725	23.49	31.84	25.25	9.700	1.015
108.0	45.33	37.48	16.56	1.357	9.565	22.47	31.64	25.10	9.766	1.075
111.0	44.37	37.26	15.95	1.397	9.253	21.21	31.10	24.39	10.01	1.140
114.0	43.44	36.54	16.63	1.463	8.732	20.02	30.26	23.55	9.915	1.236
117.0	42.15	34.89	16.62	1.528	8.044	18.73	29.22	22.57	9.633	1.332
120.0	40.43	32.95	15.09	1.598	7.310	17.52	27.95	21.46	9.155	1.472
123.0	38.12	31.35	14.08	1.669	6.582	16.11	26.55	20.26	8.541	1.573
126.0	35.91	29.71	12.85	1.719	5.793	14.72	25.03	19.05	7.748	1.683
129.0	33.45	26.54	11.84	1.769	4.998	13.31	23.30	17.85	7.159	1.769
132.0	30.95	22.87	10.77	1.814	4.385	11.80	21.47	16.58	6.517	1.864
135.0	28.52	19.49	9.883	1.860	3.892	10.37	19.78	15.27	5.953	1.940
138.0	25.85	17.03	8.834	1.925	3.404	9.088	18.15	13.79	5.355	2.015
141.0	23.27	14.48	7.939	1.985	2.952	7.881	16.46	12.23	4.843	2.095
144.0	20.64	12.60	7.069	2.051	2.565	6.732	14.46	10.89	4.446	2.201
147.0	18.07	10.78	6.320	2.172	2.277	5.786	12.82	9.603	3.888	2.356
150.0	15.60	8.971	5.601	2.287	2.186	4.606	11.19	8.456	3.335	2.523
153.0	13.32	7.534	5.313	2.297	2.141	3.635	9.608	7.461	2.828	2.603
156.0	11.22	6.274	5.112	2.297	2.011	2.747	8.203	6.526	2.371	2.709
159.0	9.009	5.169	4.741	2.312	1.875	2.316	6.942	5.411	2.136	2.804
162.0	7.404	4.210	4.369	2.347	1.870	2.135	5.879	4.186	2.085	2.924
165.0	5.851	3.522	3.997	2.382	1.870	2.010	4.064	3.224	2.005	3.005
168.0	2.990	3.110	3.595	2.402	1.870	1.895	2.481	2.535	1.940	3.096
171.0	2.475	2.692	3.258	2.407	1.865	1.864	2.145	2.272	1.884	3.156
174.0	2.162	2.322	2.921	2.407	1.855	1.849	2.020	2.106	1.854	3.201
177.0	2.091	2.236	2.584	2.407	2.113	1.850	1.985	2.026	1.855	3.287
180.0	1.975	1.985	2.161	2.382	3.488	3.211	1.975	1.980	1.985	3.367
G/C	300.0	330.0								
0.0	71.36	71.49								
3.0	71.61	71.81								
6.0	71.48	71.96								
9.0	71.16	72.04								
12.0	70.55	72.00								
15.0	69.61	71.99								
18.0	68.28	72.00								
21.0	66.89	71.78								
24.0	65.42	71.68								
27.0	63.95	71.91								
30.0	62.59	72.22								

C Range: 0 - 360DEG
 C Interval: 30.0DEG
 Test Speed: HIGH
 Temperature: 25.3DEG
 Operators: LPC
 Test Date: 2022-01-10

γ Range: 0 - 180DEG
 γ Interval: 1.0DEG
 Test System: EVERFINE GO-2000B_V1 SYSTEM V2.0.269
 Humidity: 65.0%
 Test Distance: 9.200m [K=1.0000]
 Remarks:

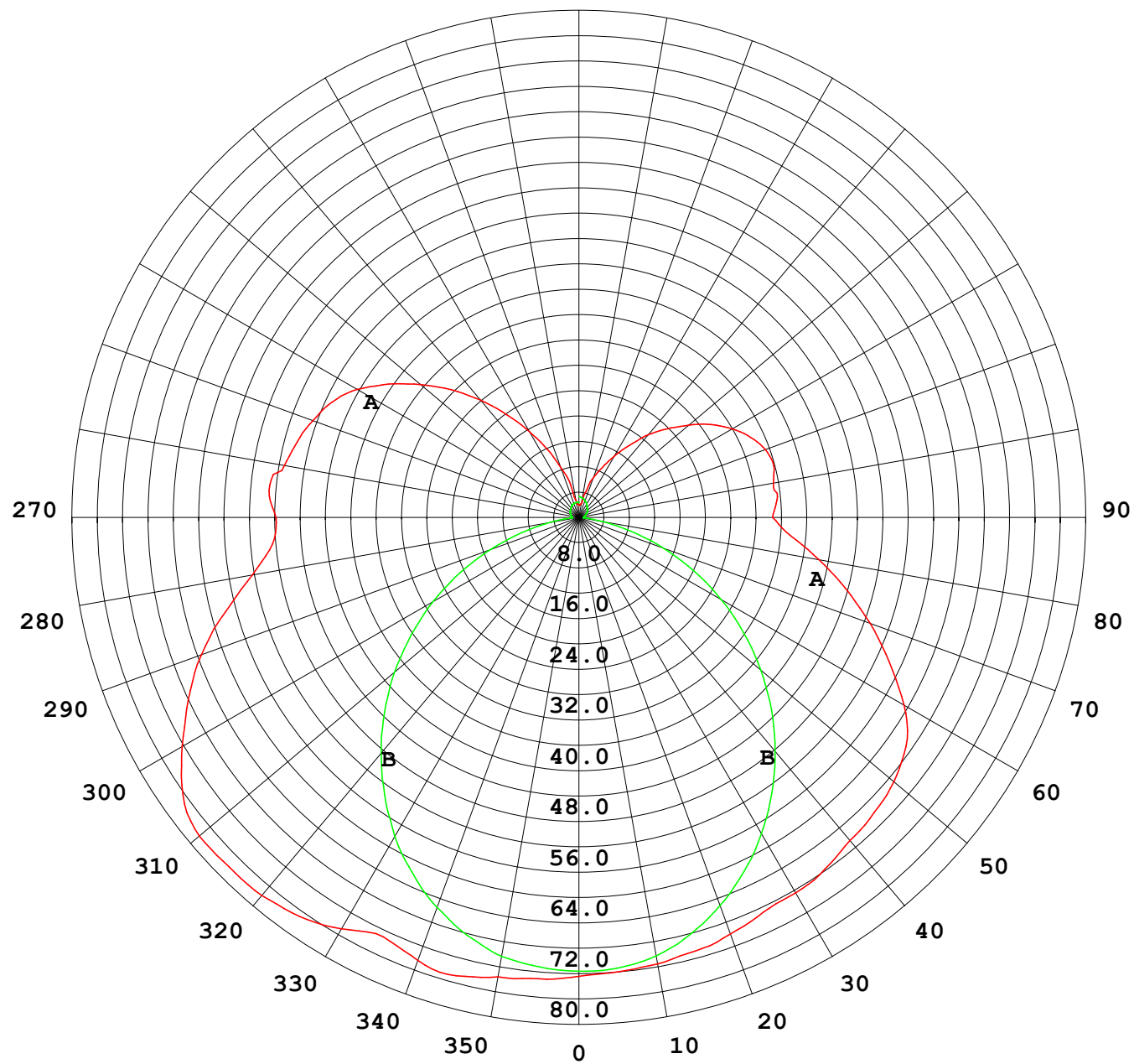
Photometric Data Table [cd]

33.0	61.00	71.82
36.0	59.47	70.37
39.0	58.26	68.95
42.0	57.16	68.11
45.0	55.46	68.18
48.0	53.21	68.58
51.0	50.74	68.59
54.0	48.10	68.47
57.0	45.35	68.08
60.0	42.71	67.24
63.0	40.03	66.24
66.0	37.45	64.94
69.0	35.15	63.59
72.0	33.18	61.85
75.0	31.21	59.50
78.0	29.24	56.83
81.0	27.13	54.12
84.0	25.01	51.37
87.0	22.89	48.08
90.0	20.93	44.74
93.0	19.24	41.86
96.0	18.50	39.64
99.0	18.76	35.61
102.0	17.77	36.20
105.0	17.90	37.03
108.0	17.54	37.93
111.0	17.44	38.71
114.0	17.24	38.32
117.0	17.68	38.06
120.0	17.26	37.78
123.0	17.08	37.01
126.0	16.18	35.88
129.0	15.22	33.22
132.0	14.10	29.48
135.0	12.99	26.13
138.0	12.01	23.81
141.0	10.95	20.77
144.0	9.943	19.05
147.0	8.892	17.24
150.0	7.958	14.98
153.0	7.488	13.16
156.0	7.185	11.25
159.0	6.803	9.392
162.0	6.426	8.026
165.0	5.984	6.973
168.0	5.627	6.485
171.0	5.235	5.756
174.0	4.768	5.113
177.0	4.285	4.390
180.0	3.412	3.237

C Range: 0 - 360DEG
C Interval: 30.0DEG
Test Speed: HIGH
Temperature:25.3DEG
Operators:LPC
Test Date:2022-01-10

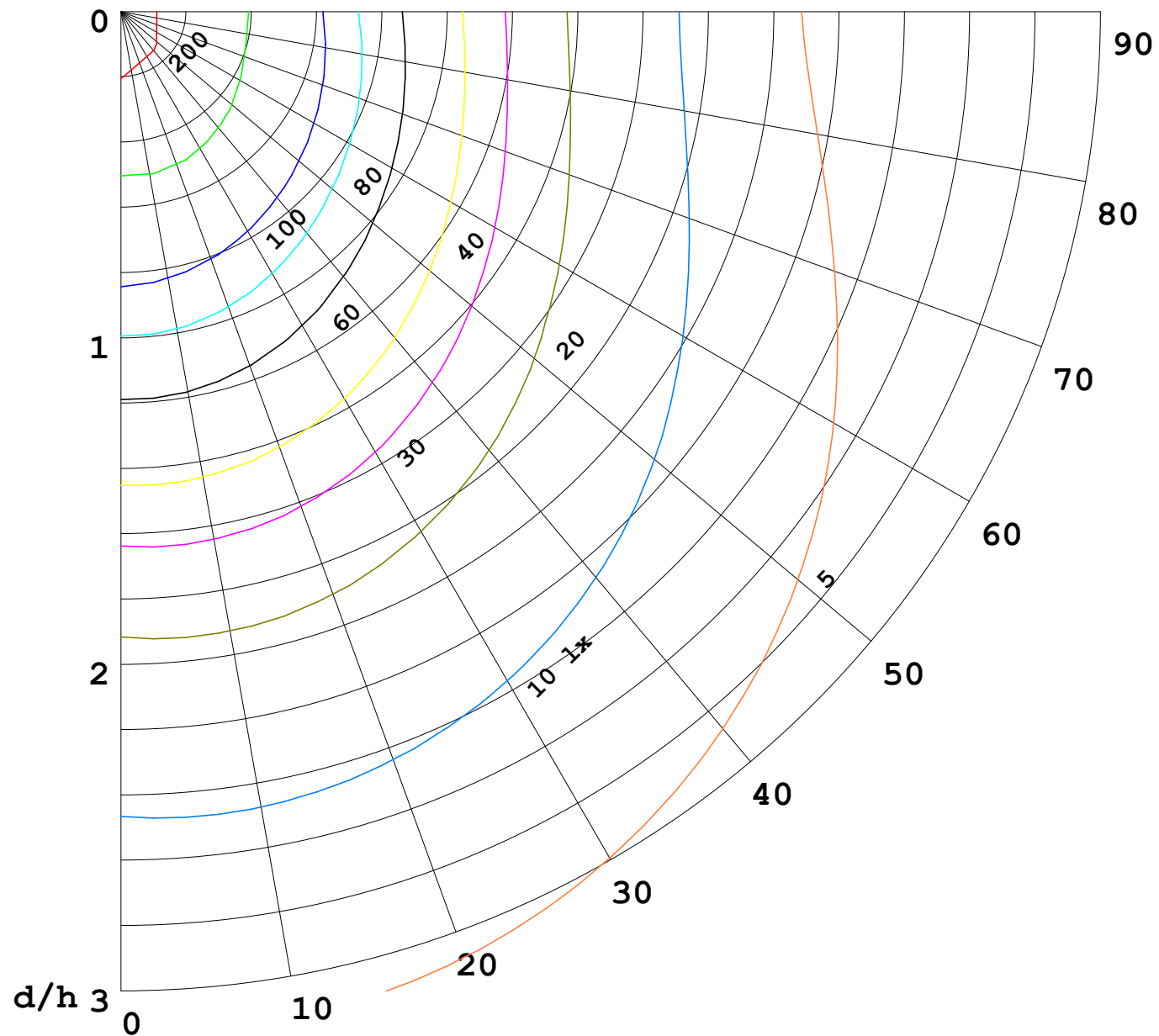
√ Range: 0 - 180DEG
√ Interval: 1.0DEG
Test System:EVERFINE GO-2000B_V1 SYSTEM V2.0.269
Humidity:65.0%
Test Distance:9.200m [K=1.0000]
Remarks:

I (cd)



1000 lm

$\kappa = 1$



F = 5000 lm
 K = 0.7
 Hcc = 0.0 m
 Hfc = 0.0 m
 Eave = 100 lx

	Pcc	Pw	Pfc
—	70	50	30
—	50	30	20

