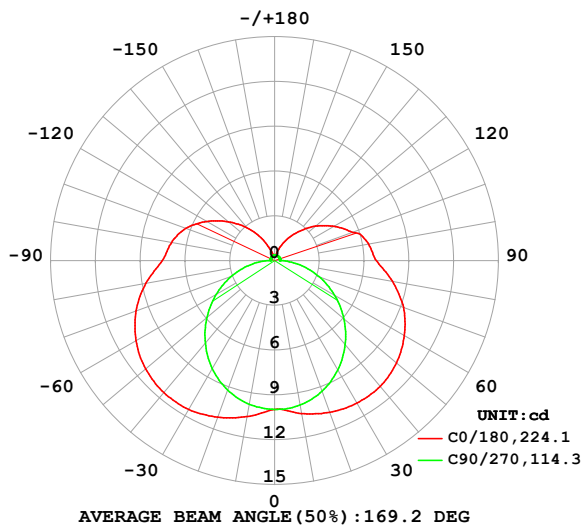


LUMINAIRE PHOTOMETRIC TEST REPORT

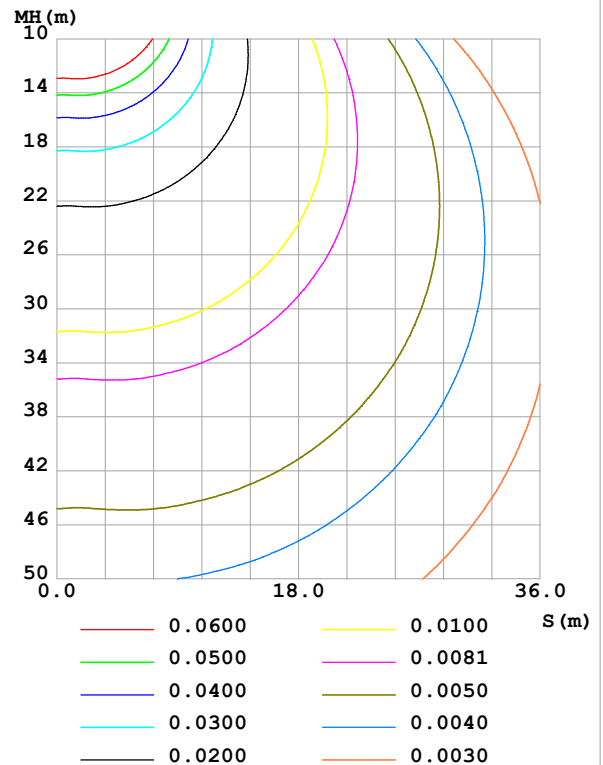
Test:U:24.00V I:0.1426A P:3.422W PF:1.000 Freq:0Hz Lamp Flux:65.7996x1 lm		
NAME: SF18-24V-5050-72-RGBW(4000K)-80	TYPE:	WEIGHT:
SPEC.:	DIM.: Length=1m	SERIAL No.:
MFR.:	SUR.:	Shielding Angle:

DATA OF LAMP		PHOTOMETRIC DATA Eff: 19.23 lm/W			
MODEL		I _{max} (cd)	11.56	S/MH(C0/180)	1.74
NOMINAL POWER(W)		LOR(%)	100.0	S/MH(C90/270)	1.25
RATED VOLTAGE(V)		TOTAL FLUX(lm)	65.800	η UP,DN(C0-180)	12.6,37.3
NOMINAL FLUX(lm)	65.7996	CIE CLASS	SEMI-D.	η UP,DN(C180-360)	12.6,37.5
LAMPS INSIDE	1	η up (%)	25.2	CIBSE SHR NOM	1.50
TEST VOLTAGE(V)		η down (%)	74.8	CIBSE SHR MAX	1.55

LUMINOUS INTENSITY DISTRIBUTION DIAGRAM



C0 PLANE ISOLUX DIAGRAM (UNIT:lx)



C Range: 0 - 360DEG
C Interval: 22.5DEG
Test Speed: HIGH
Temperature: 25.3 °C
Operators: Cloud
Test Date: 2024-10-12

γ Range: 0 - 180DEG
γ Interval: 1.0DEG
Test System: EVERFINE GO-2000B_V1 SYSTEM V2.00.488
Humidity: 65.0%
Test Distance: 6.360m [K=1.0000]
Remarks: RED

ZONAL FLUX DIAGRAM

ZONAL FLUX DIAGRAM:

γ	C0	C45	C90	C135	C180	C225	C270	C315	γ	Φ zone	Φ total	%lum, lamp
10	10.41	10.15	9.835	10.36	10.61	10.33	9.776	10.16	0- 10	0.9653	0.9653	1.47,1.47
20	10.82	10.26	9.311	10.54	11.16	10.47	9.228	10.22	10- 20	2.910	3.875	5.89,5.89
30	11.03	10.14	8.468	10.48	11.52	10.37	8.359	10.03	20- 30	4.721	8.597	13.1,13.1
40	11.00	9.738	7.362	10.14	11.55	10.02	7.232	9.596	30- 40	6.203	14.80	22.5,22.5
50	10.66	9.079	6.067	9.510	11.29	9.405	5.925	8.934	40- 50	7.197	22.00	33.4,33.4
60	10.04	8.202	4.639	8.629	10.72	8.562	4.520	8.079	50- 60	7.610	29.61	45,45
70	9.197	7.134	3.179	7.542	9.874	7.532	3.083	7.015	60- 70	7.429	37.04	56.3,56.3
80	8.014	5.929	1.725	6.270	8.748	6.332	1.652	5.820	70- 80	6.681	43.72	66.4,66.4
90	6.822	4.680	0.3631	5.048	7.525	5.124	0.3070	4.615	80- 90	5.488	49.20	74.8,74.8
100	6.400	4.357	0.3476	4.726	7.018	4.770	0.2955	3.568	90-100	4.615	53.82	81.8,81.8
110	5.576	3.442	0.3678	4.144	6.330	4.169	0.3100	3.365	100-110	4.003	57.82	87.9,87.9
120	4.606	2.729	0.3737	3.332	5.266	3.334	0.3244	2.606	110-120	3.146	60.97	92.7,92.7
130	3.603	1.941	0.3737	2.494	4.056	2.482	0.3331	1.777	120-130	2.225	63.19	96,96
140	2.563	1.284	0.3737	1.636	2.870	1.625	0.3534	1.217	130-140	1.397	64.59	98.2,98.2
150	1.646	0.7861	0.3737	0.9023	1.698	0.8884	0.3563	0.7185	140-150	0.7386	65.33	99.3,99.3
160	0.8204	0.4462	0.3737	0.4033	0.7385	0.3855	0.3679	0.4115	150-160	0.3171	65.65	99.8,99.8
170	0.3783	0.3769	0.3708	0.3798	0.3697	0.3856	0.3708	0.3856	160-170	0.1178	65.76	99.9,99.9
180	0.3754	0.3769	0.3708	0.3827	0.3697	0.3856	0.3708	0.3856	170-180	0.0362	65.80	100,100
DEG	LUMINOUS INTENSITY:cd									UNIT:lm		

Conical surface Flux(90deg): 18.309 lm

%lum = 27.8%

%lamp = 27.8%

Conical surface Flux(130deg): 33.38 lm

%lum = 50.7%

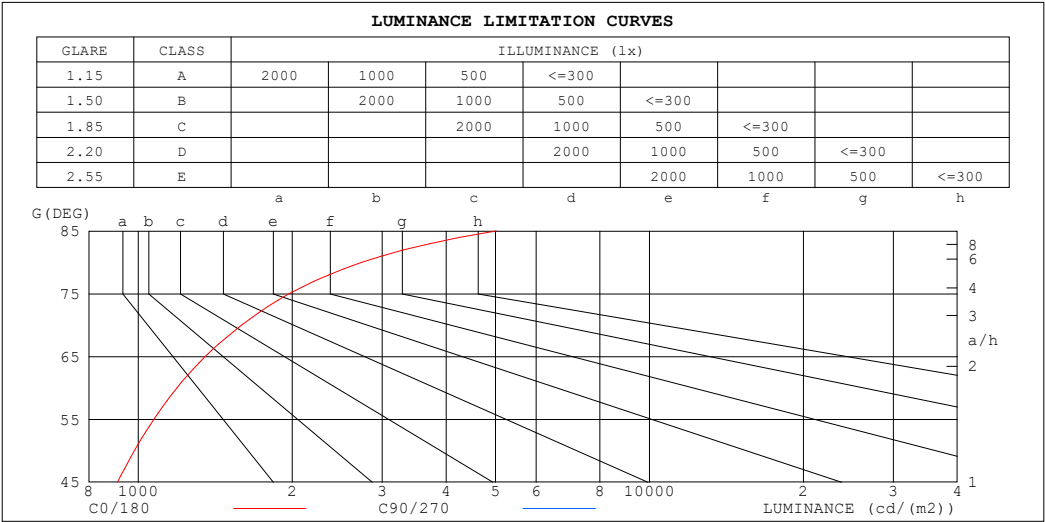
%lamp = 50.7%

C Range: 0 - 360DEG
 C Interval: 22.5DEG
 Test Speed: HIGH
 Temperature:25.3℃
 Operators:Cloud
 Test Date:2024-10-12

γ Range: 0 - 180DEG
 γ Interval: 1.0DEG
 Test System:EVERFINE GO-2000B_V1 SYSTEM V2.00.488
 Humidity:65.0%
 Test Distance:6.360m [K=1.0000]
 Remarks: RED

LUMINANCE LIMITATION CURVES

Test:U:24.00V I:0.1426A P:3.422W PF:1.000 Freq:0Hz Lamp Flux:65.7996x1 lm		
NAME: SF18-24V-5050-72-RGBW(4000K)-80	TYPE:	WEIGHT:
SPEC.:	DIM.: Length=1m	SERIAL No.:
MFR.:	SUR.:	Shielding Angle:



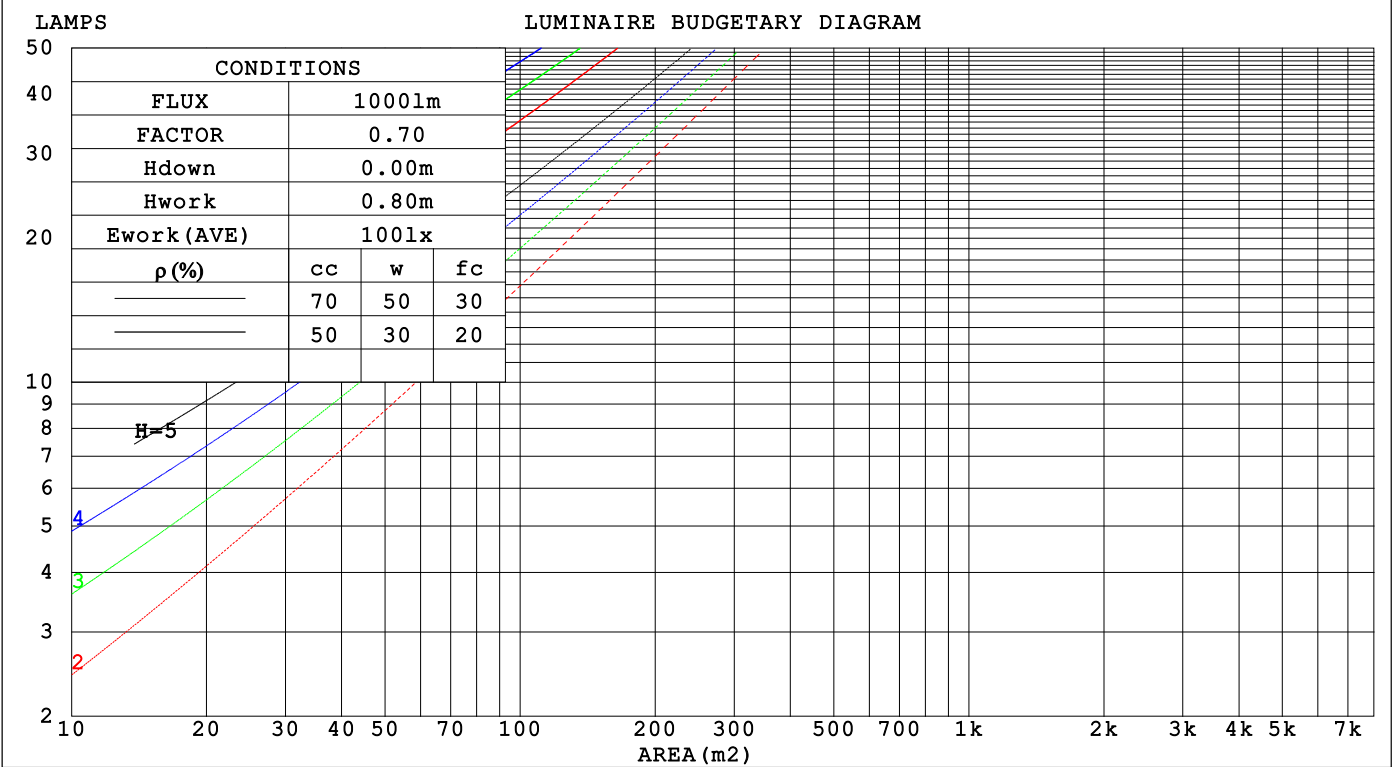
LUMINANCE cd/(m2)		
G (DEG)	C0/180	C90/270
85	5015	675
80	2734	582
75	1972	555
70	1593	545
65	1352	543
60	1190	544
55	1072	548
50	983	553
45	911	558

C Range: 0 - 360DEG	γ Range: 0 - 180DEG
C Interval: 22.5DEG	γ Interval: 1.0DEG
Test Speed: HIGH	Test System:EVERFINE GO-2000B_V1 SYSTEM V2.00.488
Temperature:25.3℃	Humidity:65.0%
Operators:Cloud	Test Distance:6.360m [K=1.0000]
Test Date:2024-10-12	Remarks: RED

CU AND LUMINAIRE BUDGETARY ESTIMATE DIAGRAM

Test:U:24.00V I:0.1426A P:3.422W PF:1.000 Freq:0Hz		
Lamp Flux:65.7996x1 lm		
NAME: SF18-24V-5050-72-RGBW(4000K)-80	TYPE:	WEIGHT:
SPEC.:	DIM.: Length=1m	SERIAL No.:
MFR.:	SUR.:	Shielding Angle:

pcc	80%			70%			50%			30%			10%			0
pw	50%	30%	10%	50%	30%	10%	50%	30%	10%	50%	30%	10%	50%	30%	10%	0
pfc	20%			20%			20%			20%			20%			0
RCR	RCR:Room Cavity Ratio															



C Range: 0 - 360DEG
C Interval: 22.5DEG
Test Speed: HIGH
Temperature:25.3℃
Operators:Cloud
Test Date:2024-10-12

γ Range: 0 - 180DEG
γ Interval: 1.0DEG
Test System:EVERFINE GO-2000B_V1 SYSTEM V2.00.488
Humidity:65.0%
Test Distance:6.360m [K=1.0000]
Remarks: RED

WEC AND CCEC

Test:U:24.00V I:0.1426A P:3.422W PF:1.000 Freq:0Hz Lamp Flux:65.7996x1 lm					
NAME: SF18-24V-5050-72-RGBW(4000K)-80			TYPE:		WEIGHT:
SPEC.:			DIM.: Length=1m		SERIAL No.:
MFR.:			SUR.:		Shielding Angle:

pcc	80%			70%			50%			30%			10%			0														
pw	50%	30%	10%	50%	30%	10%	50%	30%	10%	50%	30%	10%	50%	30%	10%	0														
pfc	20%			20%			20%			20%			20%			0														
RCR	RCR:Room Cavity Ratio															Wall Exitance Coefficients(WEC)														
0.0																														
1.0	.401	.228	.072	.386	.220	.070	.358	.206	.066	.332	.192	.062	.309	.179	.058															
2.0	.343	.188	.058	.330	.182	.056	.304	.169	.053	.281	.158	.049	.259	.147	.046															
3.0	.303	.161	.048	.290	.156	.047	.267	.145	.044	.246	.135	.041	.226	.125	.039															
4.0	.271	.141	.041	.260	.136	.040	.239	.127	.038	.220	.118	.036	.201	.109	.033															
5.0	.246	.125	.036	.236	.121	.035	.216	.113	.033	.198	.105	.031	.182	.097	.029															
6.0	.224	.113	.032	.215	.109	.031	.198	.101	.029	.181	.094	.028	.166	.087	.026															
7.0	.207	.102	.029	.198	.099	.028	.182	.092	.026	.167	.086	.025	.153	.079	.023															
8.0	.191	.093	.026	.183	.090	.026	.169	.084	.024	.155	.078	.023	.141	.073	.021															
9.0	.178	.086	.024	.171	.083	.023	.157	.078	.022	.144	.072	.021	.132	.067	.019															
10.0	.166	.080	.022	.160	.077	.022	.147	.072	.020	.135	.067	.019	.123	.062	.018															

pcc	80%			70%			50%			30%			10%			0
pw	50%	30%	10%	50%	30%	10%	50%	30%	10%	50%	30%	10%	50%	30%	10%	0
pfc	20%			20%			20%			20%			20%			0
RCR	RCR:Room Cavity Ratio						Ceiling Cavity Exitance Coefficients (CCEC)									
0.0	.383	.383	.383	.327	.327	.327	.223	.223	.223	.128	.128	.128	.041	.041	.041	
1.0	.380	.349	.321	.325	.300	.276	.223	.206	.191	.128	.119	.111	.041	.038	.036	
2.0	.374	.327	.287	.320	.281	.248	.220	.195	.173	.127	.113	.101	.041	.037	.033	
3.0	.367	.311	.266	.315	.268	.230	.216	.186	.162	.125	.109	.095	.040	.035	.031	
4.0	.359	.298	.252	.308	.258	.219	.212	.180	.154	.123	.105	.091	.039	.034	.030	
5.0	.352	.289	.243	.302	.250	.211	.208	.175	.149	.120	.103	.088	.039	.033	.029	
6.0	.344	.281	.236	.296	.243	.205	.204	.170	.145	.118	.100	.086	.038	.033	.029	
7.0	.337	.275	.231	.290	.238	.201	.200	.167	.143	.116	.098	.085	.038	.032	.028	
8.0	.330	.269	.227	.284	.233	.198	.197	.164	.140	.114	.097	.084	.037	.032	.028	
9.0	.324	.264	.224	.279	.230	.196	.193	.161	.139	.113	.095	.083	.036	.031	.027	
10.0	.318	.260	.222	.274	.226	.194	.190	.159	.138	.111	.094	.082	.036	.031	.027	

C Range: 0 - 360DEG
C Interval: 22.5DEG
Test Speed: HIGH
Temperature:25.3℃
Operators:Cloud
Test Date:2024-10-12

γ Range: 0 - 180DEG
γ Interval: 1.0DEG
Test System:EVERFINE GO-2000B_V1 SYSTEM V2.00.488
Humidity:65.0%
Test Distance:6.360m [K=1.0000]
Remarks: RED

UGR(Unified Glare Rating) Table

Test:U:24.00V I:0.1426A P:3.422W PF:1.000 Freq:0Hz Lamp Flux:65.7996x1 lm										
NAME: SF18-24V-5050-72-RGBW(4000K)-80					TYPE:			WEIGHT:		
SPEC.:					DIM.: Length=1m			SERIAL No.:		
MFR.:					SUR.:			Shielding Angle:		
ceiling/cavity	0.7	0.7	0.5	0.5	0.3	0.7	0.7	0.5	0.5	0.3
walls	0.5	0.3	0.5	0.3	0.3	0.5	0.3	0.5	0.3	0.3
working plane	0.2	0.2	0.2	0.2	0.2	0.2	0.2	0.2	0.2	0.2
Room dimensions	Viewed crosswise					Viewed endwise				
x = 2H y = 2H	21.6	22.9	22.2	23.5	24.3	18.7	20.0	19.3	20.6	21.3
3H	24.5	25.7	25.1	26.4	27.1	20.4	21.6	21.0	22.2	23.0
4H	26.1	27.2	26.7	27.9	28.7	21.2	22.3	21.8	23.0	23.8
6H	27.8	28.9	28.5	29.6	30.3	21.9	22.9	22.5	23.6	24.4
8H	28.7	29.8	29.4	30.5	31.3	22.1	23.2	22.8	23.9	24.7
12H	29.8	30.8	30.5	31.5	32.3	22.4	23.4	23.1	24.1	24.9
4H 2H	22.2	23.3	22.8	24.0	24.8	20.2	21.3	20.8	22.0	22.7
3H	25.3	26.3	26.0	27.0	27.8	22.2	23.2	22.9	23.9	24.7
4H	27.1	28.0	27.8	28.7	29.6	23.2	24.1	23.9	24.8	25.6
6H	29.0	29.9	29.8	30.6	31.5	24.0	24.9	24.8	25.6	26.5
8H	30.1	30.9	30.8	31.6	32.5	24.4	25.2	25.1	25.9	26.8
12H	31.3	32.0	32.0	32.8	33.7	24.7	25.4	25.5	26.2	27.1
8H 4H	27.4	28.2	28.2	29.0	29.9	24.4	25.2	25.2	26.0	26.9
6H	29.7	30.3	30.5	31.1	32.1	25.7	26.4	26.5	27.1	28.1
8H	31.0	31.6	31.7	32.3	33.3	26.3	26.9	27.1	27.7	28.6
12H	32.4	32.9	33.2	33.8	34.7	26.8	27.4	27.6	28.2	29.1
12H 4H	27.5	28.2	28.2	29.0	29.9	24.8	25.6	25.6	26.3	27.2
6H	29.8	30.4	30.6	31.2	32.1	26.3	26.9	27.1	27.7	28.7
8H	31.2	31.7	32.0	32.5	33.5	27.1	27.6	27.9	28.5	29.4
Variations with the observer position at spacings(CIE Pub.117):										
S = 1.0H	+ 0.1 / - 0.1					+ 0.1 / - 0.1				
1.5H	+ 0.2 / - 0.3					+ 0.2 / - 0.3				
2.0H	+ 0.3 / - 0.4					+ 0.3 / - 0.5				

CIE Pub.117, 65.80 lm Total Lamp Luminous Flux Correct (8log(F/F0) = -9.5)
Area: 0.017 m2

C Range: 0 - 360DEG
C Interval: 22.5DEG
Test Speed: HIGH
Temperature:25.3℃
Operators:Cloud
Test Date:2024-10-12

γ Range: 0 - 180DEG
γ Interval: 1.0DEG
Test System:EVERFINE GO-2000B_V1 SYSTEM V2.00.488
Humidity:65.0%
Test Distance:6.360m [K=1.0000]
Remarks: RED

UTILIZATION FACTORS TABLE

Test:U:24.00V I:0.1426A P:3.422W PF:1.000 Freq:0Hz Lamp Flux:65.7996x1 lm		
NAME: SF18-24V-5050-72-RGBW(4000K)-80	TYPE:	WEIGHT:
SPEC.:	DIM.: Length=1m	SERIAL No.:
MFR.:	SUR.:	Shielding Angle:

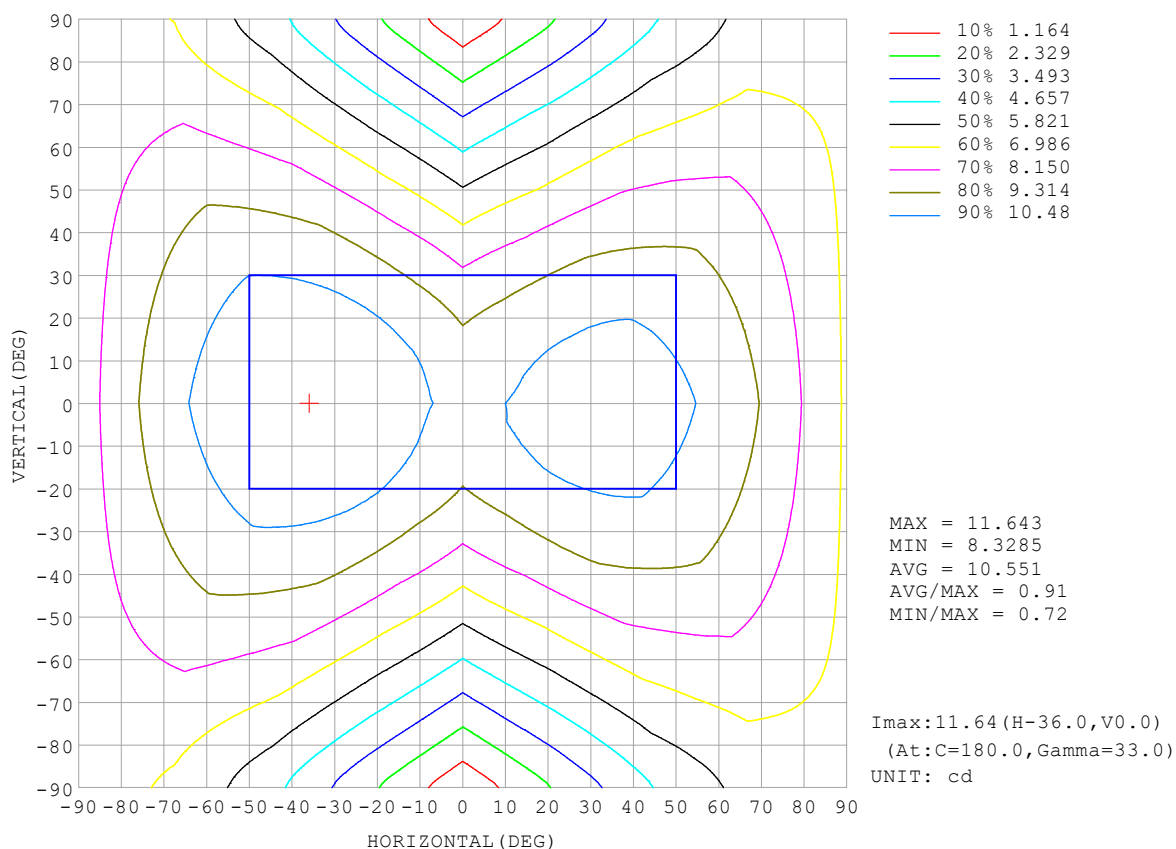
REFLECTANCE										
Ceiling	0.8	0.8	0.8	0.7	0.7	0.7	0.5	0.5	0.5	0
Walls	0.7	0.5	0.3	0.7	0.5	0.3	0.7	0.5	0.3	0
Working plane	0.2	0.2	0.2	0.2	0.2	0.2	0.2	0.2	0.2	0
ROOM INDEX	UTILIZATION FACTORS (PERCENT) $k(RI) \times RCR = 5$									
$k = 0.60$	44	31	24	43	31	24	40	30	23	16
0.80	53	39	31	51	39	31	48	37	30	21
1.00	60	47	38	58	46	38	54	46	36	27
1.25	67	54	45	65	53	44	60	49	42	32
1.50	73	60	51	70	58	49	64	54	47	35
2.00	80	68	60	77	66	58	70	61	54	41
2.50	85	74	66	81	71	63	74	66	59	45
3.00	89	79	71	85	76	68	77	70	64	48
4.00	94	85	78	89	82	75	81	75	70	53
5.00	97	90	83	92	86	80	83	78	74	56
ROOM INDEX	UF (total)									Direct
According to DIN EN 13032-2 2004			Suspended					SHRNOM = 1.25		

C Range: 0 - 360DEG
 C Interval: 22.5DEG
 Test Speed: HIGH
 Temperature: 25.3°C
 Operators: Cloud
 Test Date: 2024-10-12

γ Range: 0 - 180DEG
 γ Interval: 1.0DEG
 Test System: EVERFINE GO-2000B_V1 SYSTEM V2.00.488
 Humidity: 65.0%
 Test Distance: 6.360m [K=1.0000]
 Remarks: RED

ISOCANDELA DIAGRAM

Test:U:24.00V I:0.1426A P:3.422W PF:1.000 Freq:0Hz Lamp Flux:65.7996x1 lm		
NAME: SF18-24V-5050-72-RGBW(4000K)-80	TYPE:	WEIGHT:
SPEC.:	DIM.: Length=1m	SERIAL No.:
MFR.:	SUR.:	Shielding Angle:

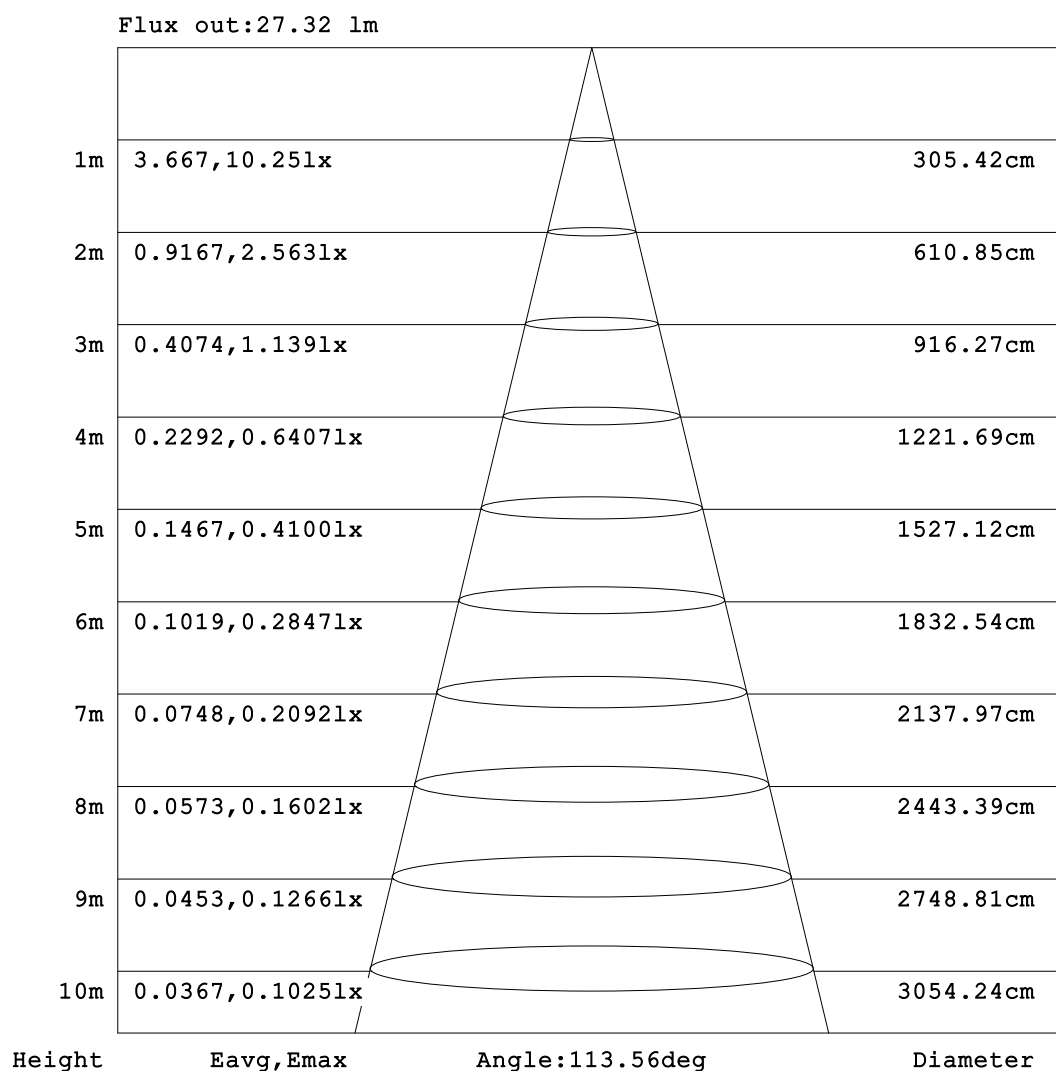


C Range: 0 - 360DEG
C Interval: 22.5DEG
Test Speed: HIGH
Temperature:25.3℃
Operators:Cloud
Test Date:2024-10-12

γ Range: 0 - 180DEG
γ Interval: 1.0DEG
Test System:EVERFINE GO-2000B_V1 SYSTEM V2.00.488
Humidity:65.0%
Test Distance:6.360m [K=1.0000]
Remarks: RED

AAI Figure

Test:U:24.00V I:0.1426A P:3.422W PF:1.000 Freq:0Hz Lamp Flux:65.7996x1 lm		
NAME: SF18-24V-5050-72-RGBW(4000K)-80	TYPE:	WEIGHT:
SPEC.:	DIM.: Length=1m	SERIAL No.:
MFR.:	SUR.:	Shielding Angle:



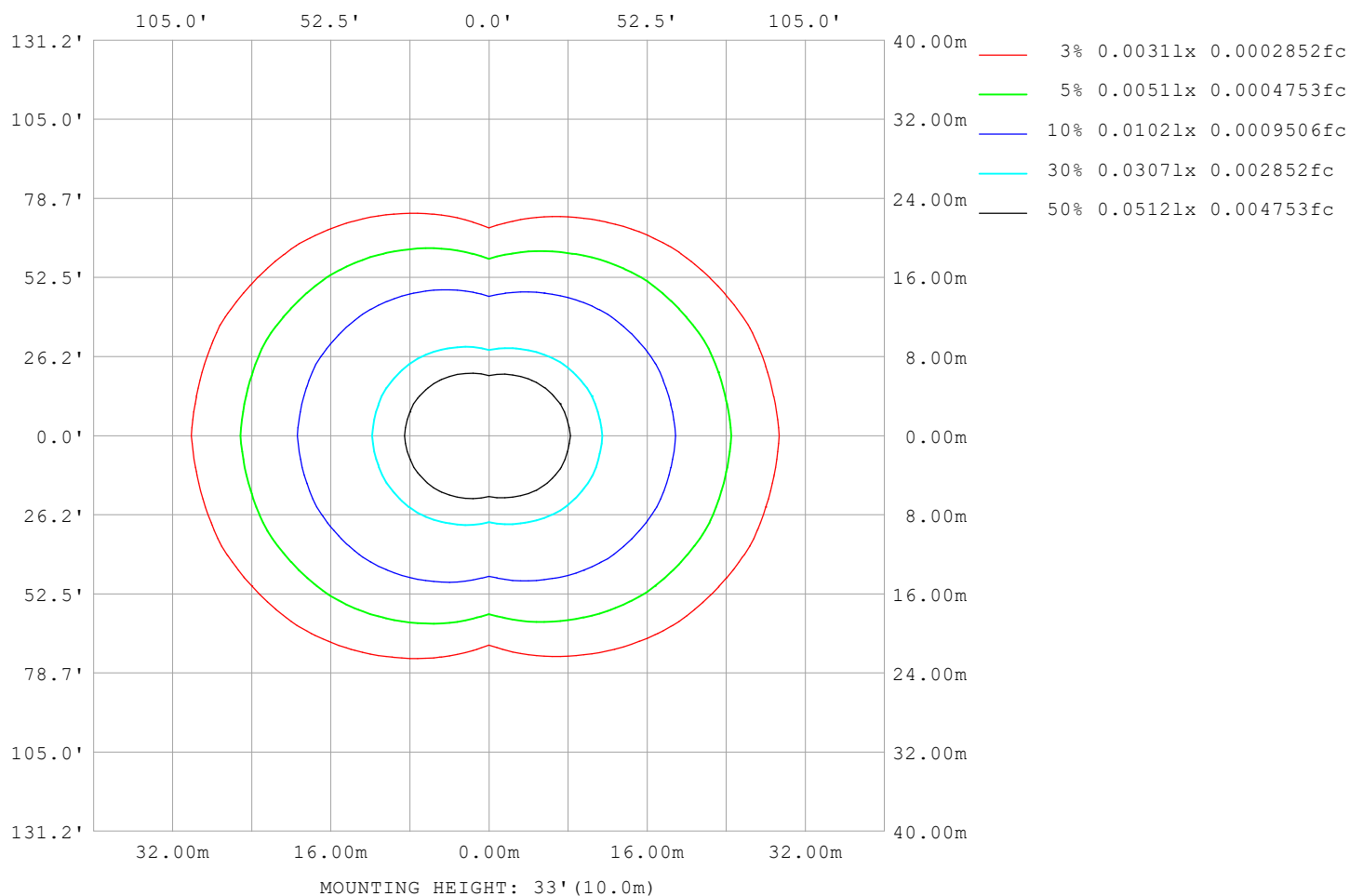
Note:The Curves indicate the illuminated area and the average illumination when the luminaire is at different distance.

C Range: 0 - 360DEG
C Interval: 22.5DEG
Test Speed: HIGH
Temperature:25.3℃
Operators:Cloud
Test Date:2024-10-12

γ Range: 0 - 180DEG
γ Interval: 1.0DEG
Test System:EVERFINE GO-2000B_V1 SYSTEM V2.00.488
Humidity:65.0%
Test Distance:6.360m [K=1.0000]
Remarks: RED

ISOLUX DIAGRAM

Test:U:24.00V I:0.1426A P:3.422W PF:1.000 Freq:0Hz Lamp Flux:65.7996x1 lm		
NAME: SF18-24V-5050-72-RGBW(4000K)-80	TYPE:	WEIGHT:
SPEC.:	DIM.: Length=1m	SERIAL No.:
MFR.:	SUR.:	Shielding Angle:



C Range: 0 - 360DEG
C Interval: 22.5DEG
Test Speed: HIGH
Temperature: 25.3°C
Operators: Cloud
Test Date: 2024-10-12

γ Range: 0 - 180DEG
γ Interval: 1.0DEG
Test System: EVERFINE GO-2000B_V1 SYSTEM V2.00.488
Humidity: 65.0%
Test Distance: 6.360m [K=1.0000]
Remarks: RED

LED Avg.L Report

Test:U:24.00V I:0.1426A P:3.422W PF:1.000 Freq:0Hz Lamp Flux:65.7996x1 lm		
NAME: SF18-24V-5050-72-RGBW(4000K)-80	TYPE:	WEIGHT:
SPEC.:	DIM.: Length=1m	SERIAL No.:
MFR.:	SUR.:	Shielding Angle:

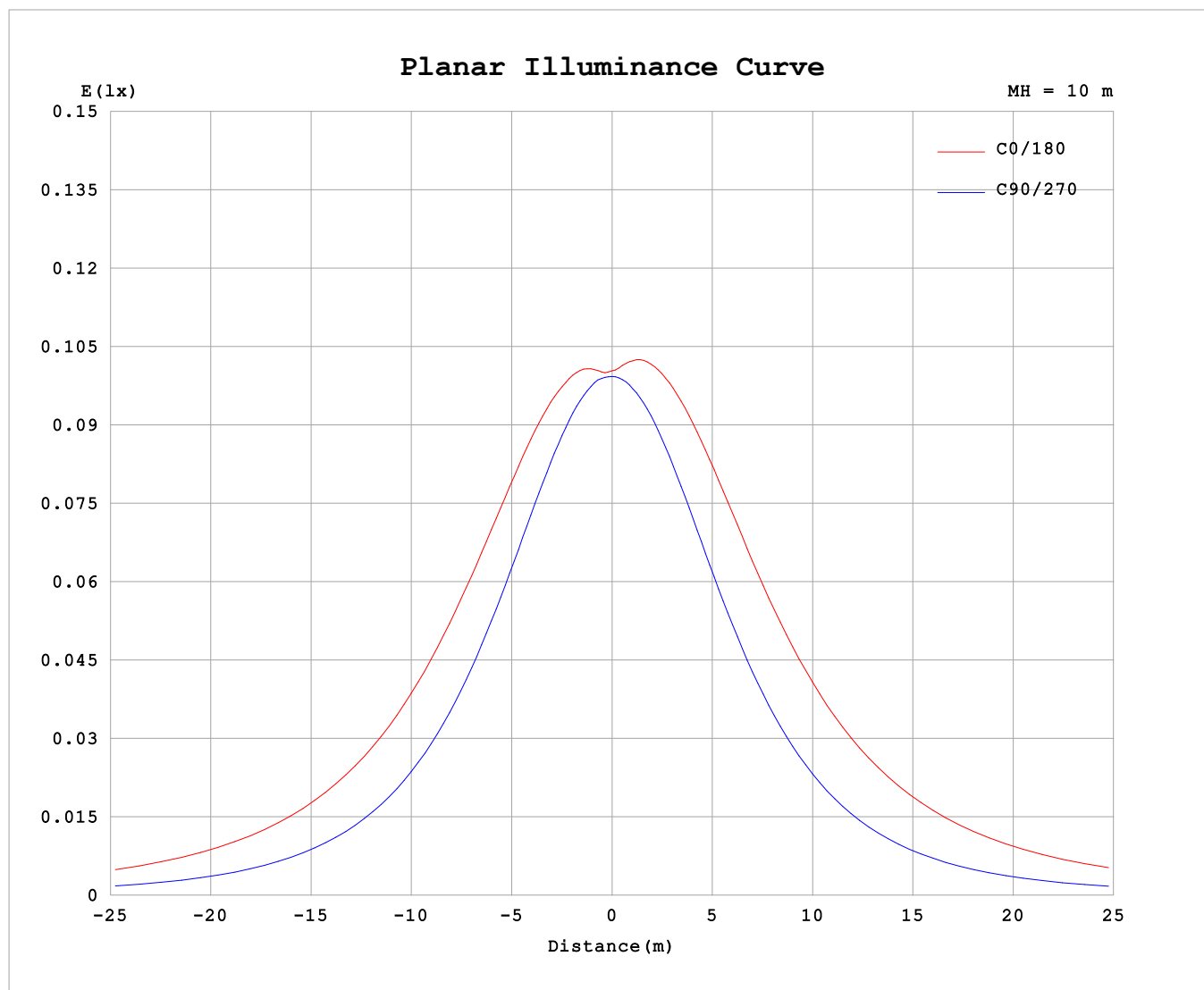
AvgL	cd/m2
L_0~180 (65) av	1390
L_0~180 (75) av	2041
L_0~180 (85) av	5222
L_90~270 (65) av	537
L_90~270 (75) av	547
L_90~270 (85) av	662
L_45 (65) av	1094
L_45 (75) av	1525
L_45 (85) av	3667

Standard: GB/T 29293-2012

C Range: 0 - 360DEG
C Interval: 22.5DEG
Test Speed: HIGH
Temperature:25.3℃
Operators:Cloud
Test Date:2024-10-12

γ Range: 0 - 180DEG
γ Interval: 1.0DEG
Test System:EVERFINE GO-2000B_V1 SYSTEM V2.00.488
Humidity:65.0%
Test Distance:6.360m [K=1.0000]
Remarks: RED

Planar Illuminance Curve



C Range: 0 - 360DEG
C Interval: 22.5DEG
Test Speed: HIGH
Temperature: 25.3 °C
Operators: Cloud
Test Date: 2024-10-12

γ Range: 0 - 180DEG
 γ Interval: 1.0DEG
Test System: EVERFINE GO-2000B_V1 SYSTEM V2.00.488
Humidity: 65.0%
Test Distance: 6.360m [K=1.0000]
Remarks: RED

LUMINOUS DISTRIBUTION INTENSITY DATA

Test:U:24.00V I:0.1426A P:3.422W PF:1.000 Freq:0Hz Lamp Flux:65.7996x1 lm																		
NAME: SF18-24V-5050-72-RGBW(4000K)-80									TYPE:					WEIGHT:				
SPEC.:									DIM.: Length=1m					SERIAL No.:				
MFR.:									SUR.:					Shielding Angle:				

Table--1

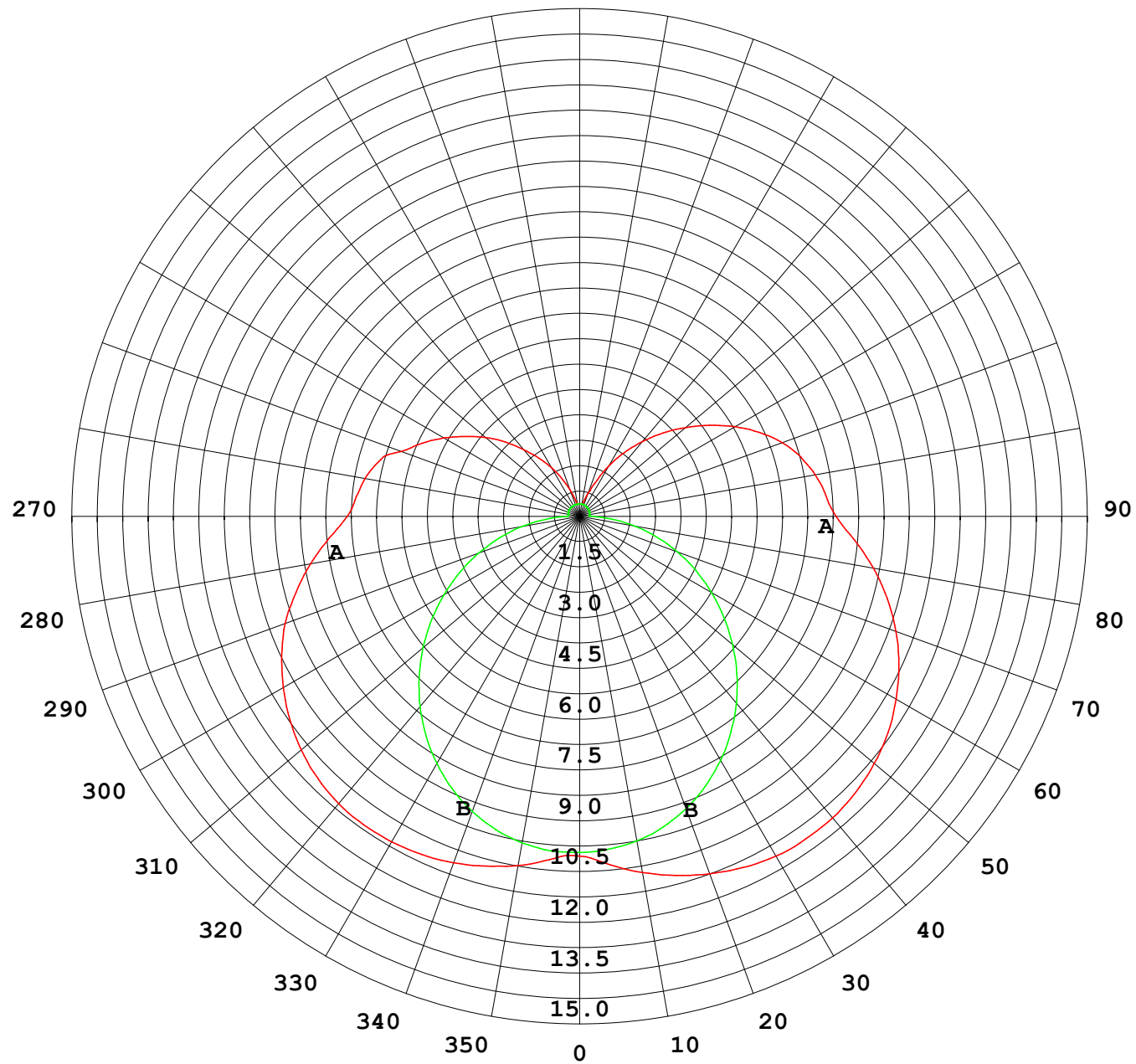
UNIT: cd

γ (DEG)	C (DEG)																	
	0	22.5	45	67.5	90	112.5	135	157.5	180	202.5	225	247.5	270	292.5	315	337.5		
0	9.97	9.97	9.97	9.97	9.97	9.97	9.97	9.97	9.97	9.97	9.97	9.97	9.97	9.97	9.97	9.97		
5	10.1	10.1	9.99	9.93	9.96	10.0	10.1	10.2	10.3	10.2	10.1	10.01	9.91	9.92	10.02	10.1		
10	10.4	10.4	10.2	9.91	9.83	10.0	10.4	10.5	10.6	10.5	10.3	10.0	9.78	9.87	10.2	10.3		
15	10.6	10.6	10.3	9.85	9.61	9.99	10.5	10.8	10.9	10.8	10.4	10.00	9.54	9.79	10.2	10.5		
20	10.8	10.7	10.3	9.72	9.31	9.87	10.5	11.0	11.2	11.0	10.5	9.86	9.23	9.64	10.2	10.6		
25	11.0	10.8	10.2	9.50	8.93	9.66	10.6	11.2	11.4	11.1	10.5	9.64	8.83	9.40	10.2	10.7		
30	11.0	10.8	10.1	9.20	8.47	9.38	10.5	11.2	11.5	11.2	10.4	9.34	8.36	9.07	10.03	10.7		
35	11.0	10.8	9.96	8.84	7.95	9.04	10.4	11.2	11.6	11.2	10.2	8.98	7.82	8.69	9.84	10.7		
40	11.0	10.7	9.74	8.43	7.36	8.63	10.1	11.2	11.5	11.2	10.0	8.57	7.23	8.26	9.60	10.6		
45	10.9	10.5	9.44	7.96	6.73	8.16	9.86	11.0	11.5	11.0	9.74	8.10	6.59	7.78	9.29	10.4		
50	10.7	10.3	9.08	7.44	6.07	7.65	9.51	10.8	11.3	10.8	9.41	7.60	5.92	7.26	8.93	10.2		
55	10.4	9.94	8.67	6.89	5.37	7.10	9.10	10.5	11.0	10.5	9.01	7.05	5.22	6.71	8.52	9.87		
60	10.0	9.56	8.20	6.32	4.64	6.52	8.63	10.1	10.7	10.2	8.56	6.49	4.52	6.14	8.08	9.51		
65	9.64	9.12	7.69	5.71	3.91	5.91	8.11	9.70	10.3	9.75	8.07	5.89	3.80	5.56	7.58	9.09		
70	9.20	8.64	7.13	5.09	3.18	5.27	7.54	9.21	9.87	9.26	7.53	5.27	3.08	4.96	7.01	8.59		
75	8.62	8.10	6.54	4.44	2.45	4.61	6.92	8.65	9.35	8.73	6.95	4.61	2.37	4.30	6.43	8.05		
80	8.01	7.49	5.93	3.78	1.73	3.92	6.27	8.03	8.75	8.13	6.33	3.96	1.65	3.64	5.82	7.45		
85	7.38	6.82	5.28	3.12	1.00	3.22	5.60	7.37	8.10	7.48	5.68	3.29	0.96	2.98	5.18	6.81		
90	6.82	6.24	4.68	2.51	0.36	2.63	5.05	6.81	7.52	6.93	5.12	2.72	0.31	2.42	4.61	6.26		
95	6.58	6.01	4.50	2.42	0.35	2.55	4.88	6.57	7.24	6.69	4.95	2.63	0.30	1.42	4.39	6.01		
100	6.40	5.85	4.36	1.99	0.35	2.41	4.73	6.37	7.02	6.47	4.77	2.47	0.30	1.70	3.57	5.21		
105	6.13	5.53	3.83	1.68	0.36	2.18	4.49	6.08	6.73	6.19	4.53	2.22	0.30	1.46	3.74	5.31		
110	5.58	4.95	3.44	1.53	0.37	1.93	4.14	5.70	6.33	5.79	4.17	1.96	0.31	1.38	3.36	4.95		
115	5.09	4.52	3.08	1.36	0.37	1.67	3.74	5.24	5.83	5.31	3.76	1.70	0.32	1.30	2.88	4.37		
120	4.61	4.07	2.73	1.18	0.37	1.42	3.33	4.70	5.27	4.77	3.33	1.44	0.32	1.15	2.61	3.94		
125	4.10	3.63	2.37	1.00	0.37	1.14	2.91	4.15	4.67	4.21	2.91	1.15	0.33	0.95	2.17	3.37		
130	3.60	3.19	1.94	0.85	0.37	0.90	2.49	3.61	4.06	3.65	2.48	0.92	0.33	0.78	1.78	2.96		
135	3.09	2.68	1.60	0.69	0.37	0.70	2.08	3.06	3.46	3.10	2.06	0.72	0.34	0.63	1.50	2.53		
140	2.56	2.16	1.28	0.56	0.37	0.53	1.64	2.52	2.87	2.55	1.62	0.54	0.35	0.51	1.22	2.14		
145	2.08	1.64	1.02	0.45	0.37	0.38	1.24	1.98	2.29	2.02	1.22	0.41	0.36	0.42	0.94	1.62		
150	1.65	1.19	0.79	0.37	0.37	0.37	0.90	1.44	1.70	1.48	0.89	0.37	0.36	0.37	0.72	1.22		
155	1.20	0.85	0.58	0.37	0.37	0.37	0.62	1.00	1.09	1.03	0.60	0.36	0.37	0.37	0.54	0.87		
160	0.82	0.58	0.45	0.37	0.37	0.37	0.40	0.63	0.74	0.66	0.39	0.36	0.37	0.37	0.41	0.60		
165	0.51	0.40	0.38	0.37	0.37	0.37	0.38	0.39	0.41	0.41	0.39	0.36	0.37	0.37	0.39	0.43		
170	0.38	0.38	0.38	0.38	0.37	0.38	0.38	0.39	0.37	0.39	0.39	0.36	0.37	0.37	0.39	0.40		
175	0.38	0.38	0.38	0.38	0.37	0.38	0.38	0.39	0.37	0.39	0.39	0.37	0.37	0.37	0.39	0.40		
180	0.38	0.38	0.38	0.38	0.37	0.38	0.38	0.39	0.37	0.39	0.39	0.37	0.37	0.37	0.39	0.40		

C Range: 0 - 360DEG
C Interval: 22.5DEG
Test Speed: HIGH
Temperature:25.3℃
Operators:Cloud
Test Date:2024-10-12

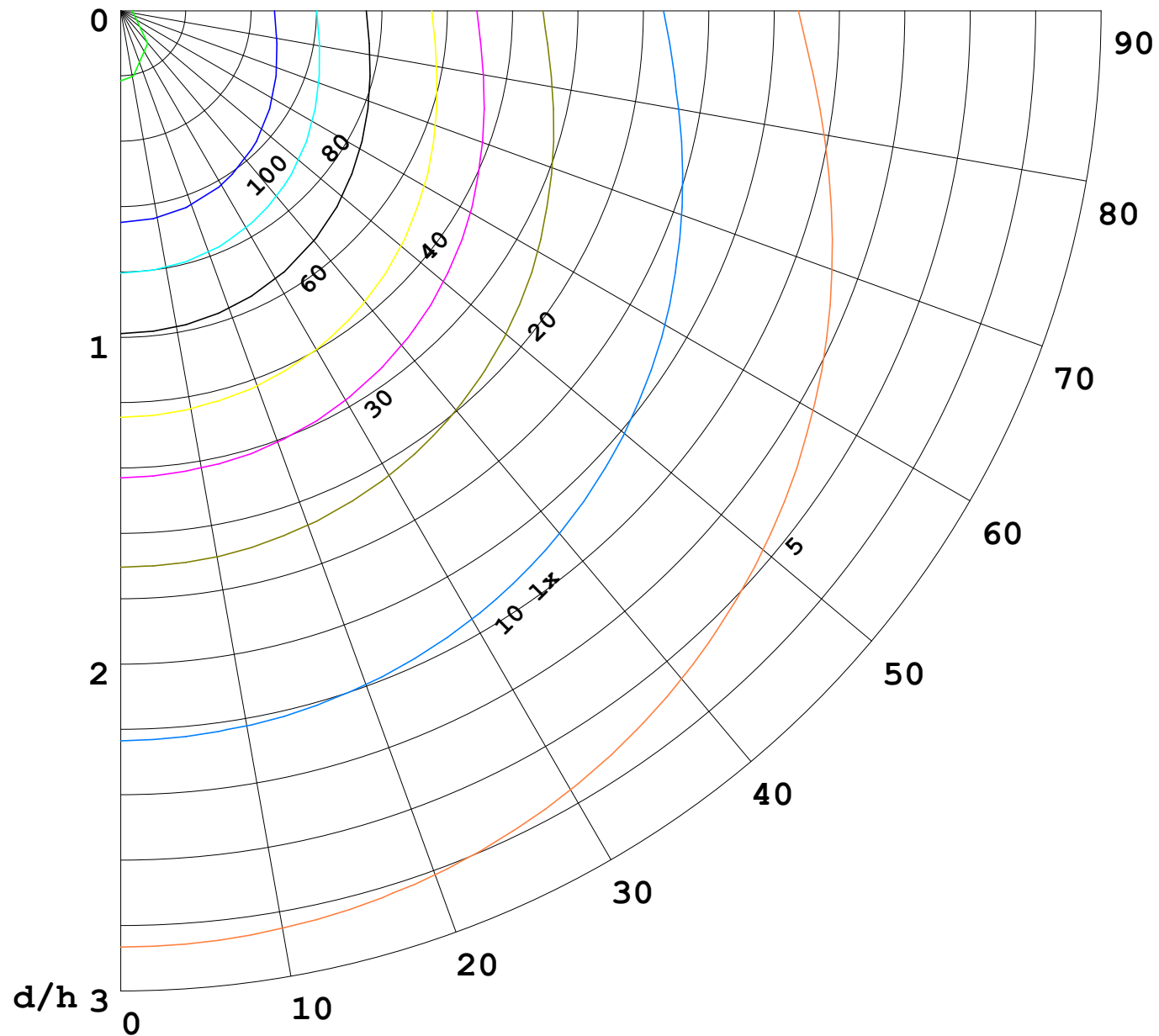
γ Range: 0 - 180DEG
γ Interval: 1.0DEG
Test System:EVERFINE GO-2000B_V1 SYSTEM V2.00.488
Humidity:65.0%
Test Distance:6.360m [K=1.0000]
Remarks: RED

I (cd)



1000 lm

$\kappa = 1$



F = 1000 lm
 K = 0.7
 Hcc = 0.8 m
 Hfc = 0.0 m
 Eave = 100 lx

	Pcc	Pw	Pfc
————	70	50	30
————	50	30	20

