

## LUMINAIRE PHOTOMETRIC TEST REPORT

Test:U:24.00V I:0.7137A P:17.13W PF:1.000 Freq:0Hz  
Lamp Flux:632.17x1 lm

NAME: SF18-24V-5050-72-RGBW(2700K)-80

TYPE:

WEIGHT:

SPEC.:

DIM.: Length=1m

SERIAL No.:

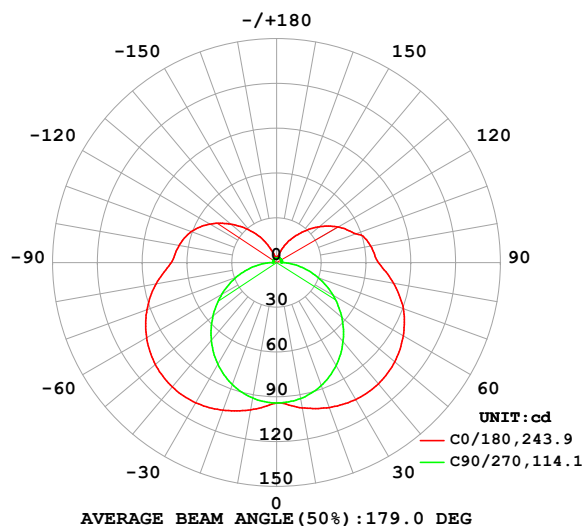
MFR.:

SUR.:

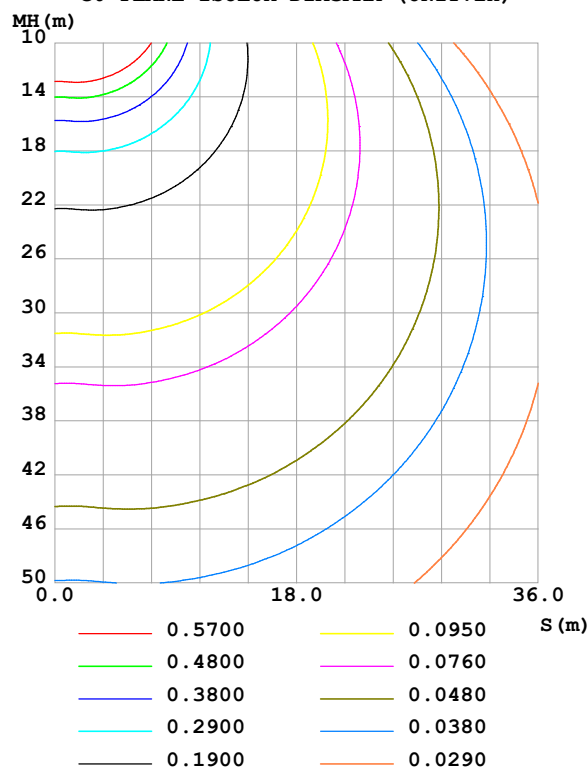
Shielding Angle:

DATA OF LAMP		PHOTOMETRIC DATA				Eff: 36.91 lm/W
MODEL		Imax (cd)	109.0	S/MH(C0/180)	1.73	
NOMINAL POWER(W)		LOR(%)	100.0	S/MH(C90/270)	1.25	
RATED VOLTAGE(V)		TOTAL FLUX(lm)	632.17	$\eta$ UP,DN(C0-180)	13.0,37.1	
NOMINAL FLUX(lm)	632.17	CIE CLASS	SEMI-D.	$\eta$ UP,DN(C180-360)	12.9,36.9	
LAMPS INSIDE	1	$\eta$ up (%)	26.0	CIBSE SHR NOM	1.50	
TEST VOLTAGE(V)		$\eta$ down (%)	74.0	CIBSE SHR MAX	1.55	

LUMINOUS INTENSITY DISTRIBUTION DIAGRAM



C0 PLANE ISOLUX DIAGRAM (UNIT:lx)



C Range: 0 - 360DEG  
C Interval: 22.5DEG  
Test Speed: HIGH  
Temperature:25.3℃  
Operators:Cloud  
Test Date:2024-10-15

$\gamma$  Range: 0 - 180DEG  
 $\gamma$  Interval: 1.0DEG  
Test System:EVERFINE GO-2000B\_V1 SYSTEM V2.00.488  
Humidity:65.0%  
Test Distance:6.360m [K=1.0000]  
Remarks: ALL

## ZONAL FLUX DIAGRAM

## ZONAL FLUX DIAGRAM:

$\gamma$	C0	C45	C90	C135	C180	C225	C270	C315	$\gamma$	$\Phi$ zone	$\Phi$ total	%lum, lamp
10	98.83	96.24	92.54	97.69	100.1	97.42	92.18	95.78	0- 10	9.119	9.119	1.44,1.44
20	103.3	97.68	87.63	99.29	105.2	98.81	87.00	96.87	10- 20	27.51	36.63	5.79,5.79
30	105.9	96.61	79.77	98.51	108.4	97.77	78.74	95.39	20- 30	44.68	81.31	12.9,12.9
40	106.1	93.20	69.32	95.13	108.8	94.33	68.10	91.69	30- 40	58.78	140.1	22.2,22.2
50	103.4	87.42	57.11	89.10	106.1	88.32	55.70	85.82	40- 50	68.29	208.4	33,33
60	98.02	79.43	43.70	80.66	100.6	80.16	42.36	78.04	50- 60	72.32	280.7	44.4,44.4
70	90.47	69.60	29.81	70.28	92.47	70.25	28.79	68.21	60- 70	70.72	351.4	55.6,55.6
80	79.56	58.48	16.12	58.62	81.88	58.95	15.34	57.25	70- 80	63.80	415.2	65.7,65.7
90	68.28	46.74	3.195	47.24	70.62	47.81	2.727	45.96	80- 90	52.72	467.9	74,74
100	64.10	43.73	3.329	44.60	66.44	45.15	2.659	43.11	90-100	45.10	513.0	81.2,81.2
110	56.57	35.21	3.500	40.18	60.90	40.48	2.714	34.96	100-110	39.52	552.6	87.4,87.4
120	47.79	28.85	3.517	32.69	51.78	32.82	2.876	25.11	110-120	31.29	583.8	92.4,92.4
130	37.49	20.36	3.520	24.46	40.21	24.50	2.980	18.58	120-130	22.31	606.2	95.9,95.9
140	26.63	13.30	3.500	16.05	28.45	16.14	3.116	12.53	130-140	14.06	620.2	98.1,98.1
150	17.09	7.980	3.482	8.770	16.89	8.824	3.217	7.231	140-150	7.396	627.6	99.3,99.3
160	8.390	4.310	3.442	3.734	7.056	3.757	3.335	4.003	150-160	3.122	630.7	99.8,99.8
170	3.460	3.474	3.425	3.496	3.425	3.474	3.425	3.534	160-170	1.105	631.8	99.9,99.9
180	3.494	3.483	3.413	3.528	3.494	3.500	3.425	3.531	170-180	0.3318	632.2	100,100
DEG	LUMINOUS INTENSITY:cd									UNIT:lm		

Conical surface Flux(90deg): 173.38 lm

%lum = 27.4%

%lamp = 27.4%

Conical surface Flux(130deg): 316.6 lm

%lum = 50.1%

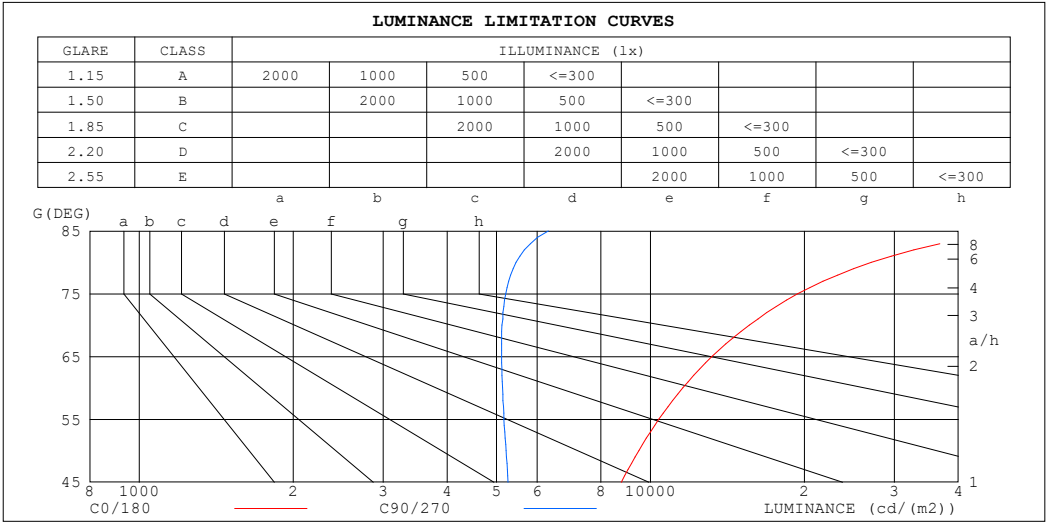
%lamp = 50.1%

C Range: 0 - 360DEG  
 C Interval: 22.5DEG  
 Test Speed: HIGH  
 Temperature:25.3℃  
 Operators:Cloud  
 Test Date:2024-10-15

$\gamma$  Range: 0 - 180DEG  
 $\gamma$  Interval: 1.0DEG  
 Test System:EVERFINE GO-2000B\_V1 SYSTEM V2.00.488  
 Humidity:65.0%  
 Test Distance:6.360m [K=1.0000]  
 Remarks: ALL

LUMINANCE LIMITATION CURVES

Test:U:24.00V I:0.7137A P:17.13W PF:1.000 Freq:0Hz Lamp Flux:632.17x1 lm		
NAME: SF18-24V-5050-72-RGBW(2700K)-80	TYPE:	WEIGHT:
SPEC.:	DIM.: Length=1m	SERIAL No.:
MFR.:	SUR.:	Shielding Angle:



LUMINANCE cd/(m2)		
G (DEG)	C0/180	C90/270
85	49821	6315
80	27028	5454
75	19405	5211
70	15603	5120
65	13189	5113
60	11564	5134
55	10388	5167
50	9487	5219
45	8765	5264

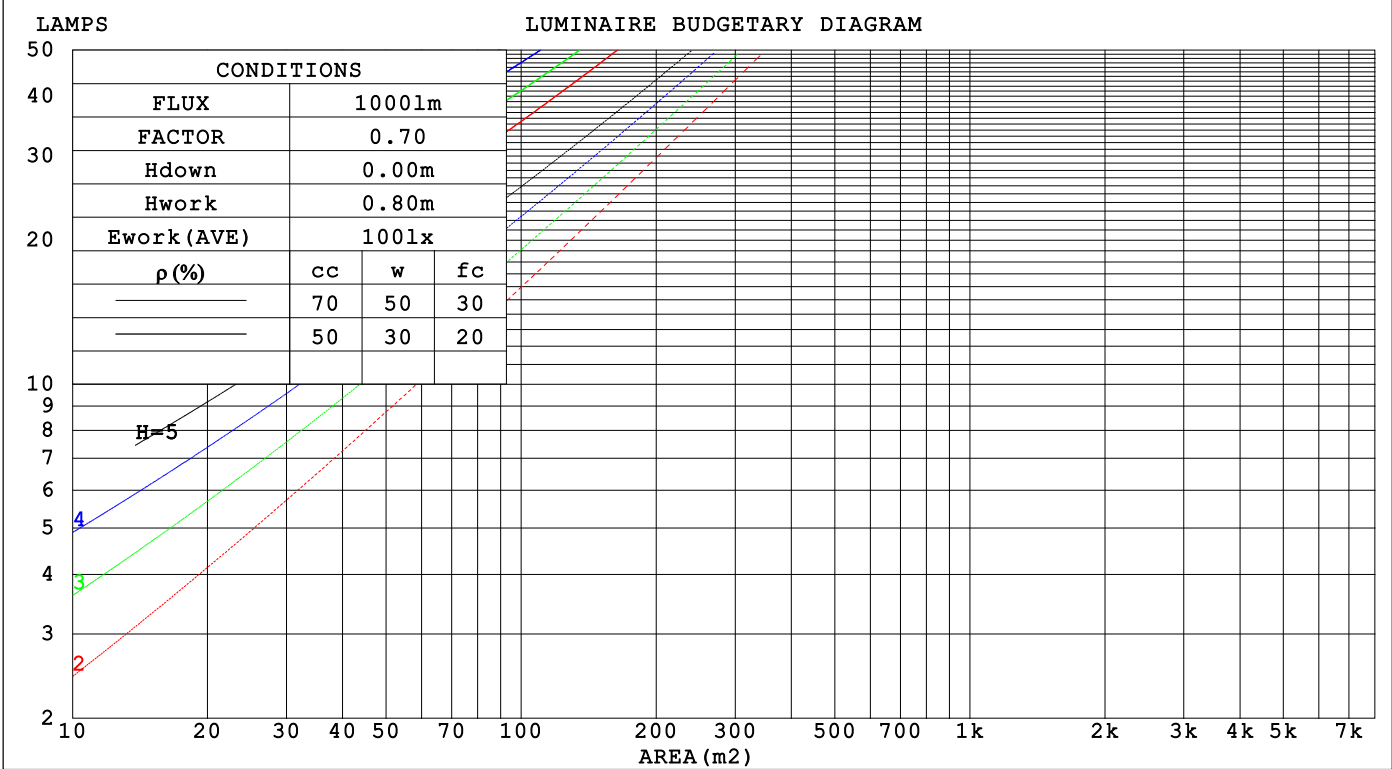
C Range: 0 - 360DEG  
C Interval: 22.5DEG  
Test Speed: HIGH  
Temperature:25.3℃  
Operators:Cloud  
Test Date:2024-10-15

γ Range: 0 - 180DEG  
γ Interval: 1.0DEG  
Test System:EVERFINE GO-2000B\_V1 SYSTEM V2.00.488  
Humidity:65.0%  
Test Distance:6.360m [K=1.0000]  
Remarks: ALL

CU AND LUMINAIRE BUDGETARY ESTIMATE DIAGRAM

Test:U:24.00V I:0.7137A P:17.13W PF:1.000 Freq:0Hz		
Lamp Flux:632.17x1 lm		
NAME: SF18-24V-5050-72-RGBW(2700K)-80	TYPE:	WEIGHT:
SPEC.:	DIM.: Length=1m	SERIAL No.:
MFR.:	SUR.:	Shielding Angle:

pcc	80%			70%			50%			30%			10%			0
pw	50%	30%	10%	50%	30%	10%	50%	30%	10%	50%	30%	10%	50%	30%	10%	0
pfc	20%			20%			20%			20%			20%			0
RCR	RCR:Room Cavity Ratio															



C Range: 0 - 360DEG  
C Interval: 22.5DEG  
Test Speed: HIGH  
Temperature:25.3℃  
Operators:Cloud  
Test Date:2024-10-15

γ Range: 0 - 180DEG  
γ Interval: 1.0DEG  
Test System:EVERFINE GO-2000B\_V1 SYSTEM V2.00.488  
Humidity:65.0%  
Test Distance:6.360m [K=1.0000]  
Remarks: ALL

## WEC AND CCEC

Test:U:24.00V I:0.7137A P:17.13W PF:1.000 Freq:0Hz Lamp Flux:632.17x1 lm					
NAME: SF18-24V-5050-72-RGBW(2700K)-80			TYPE:		WEIGHT:
SPEC.:			DIM.: Length=1m		SERIAL No.:
MFR.:			SUR.:		Shielding Angle:

pcc	80%			70%			50%			30%			10%			0														
pw	50%	30%	10%	50%	30%	10%	50%	30%	10%	50%	30%	10%	50%	30%	10%	0														
pfc	20%			20%			20%			20%			20%			0														
RCR	RCR:Room Cavity Ratio															Wall Exitance Coefficients(WEC)														
0.0																														
1.0	.401	.228	.072	.386	.220	.070	.357	.205	.065	.331	.191	.061	.307	.178	.057															
2.0	.343	.188	.058	.329	.181	.056	.303	.169	.052	.279	.157	.049	.257	.146	.046															
3.0	.302	.161	.048	.290	.155	.047	.266	.144	.044	.245	.134	.041	.225	.124	.038															
4.0	.271	.141	.041	.260	.136	.040	.238	.126	.038	.218	.117	.035	.200	.109	.033															
5.0	.245	.125	.036	.235	.121	.035	.216	.112	.033	.197	.104	.031	.180	.096	.029															
6.0	.224	.112	.032	.215	.108	.031	.197	.101	.029	.180	.094	.028	.165	.087	.026															
7.0	.206	.102	.029	.198	.098	.028	.181	.092	.026	.166	.085	.025	.151	.079	.023															
8.0	.191	.093	.026	.183	.090	.025	.168	.084	.024	.154	.078	.022	.140	.072	.021															
9.0	.178	.086	.024	.170	.083	.023	.156	.077	.022	.143	.072	.021	.131	.066	.019															
10.0	.166	.080	.022	.159	.077	.021	.146	.072	.020	.134	.067	.019	.122	.062	.018															

pcc	80%			70%			50%			30%			10%			0
pw	50%	30%	10%	50%	30%	10%	50%	30%	10%	50%	30%	10%	50%	30%	10%	0
pfc	20%			20%			20%			20%			20%			0
RCR	RCR:Room Cavity Ratio						Ceiling Cavity Exitance Coefficients (CCEC)									
0.0	.388	.388	.388	.332	.332	.332	.227	.227	.227	.130	.130	.130	.042	.042	.042	
1.0	.386	.355	.327	.330	.305	.281	.226	.210	.194	.130	.121	.113	.042	.039	.037	
2.0	.380	.333	.293	.325	.286	.253	.223	.198	.177	.129	.115	.103	.041	.037	.034	
3.0	.373	.317	.272	.320	.273	.236	.219	.190	.165	.127	.111	.097	.041	.036	.032	
4.0	.365	.304	.258	.313	.263	.224	.215	.183	.158	.125	.107	.093	.040	.035	.031	
5.0	.357	.295	.249	.307	.255	.216	.211	.178	.153	.122	.105	.091	.039	.034	.030	
6.0	.350	.287	.242	.301	.249	.211	.208	.174	.149	.120	.102	.089	.039	.033	.029	
7.0	.343	.281	.237	.295	.243	.206	.204	.171	.146	.118	.100	.087	.038	.033	.029	
8.0	.336	.275	.233	.289	.239	.203	.200	.168	.144	.117	.099	.086	.038	.032	.028	
9.0	.330	.270	.230	.284	.235	.201	.197	.165	.143	.115	.097	.085	.037	.032	.028	
10.0	.324	.266	.228	.279	.231	.199	.194	.163	.141	.113	.096	.084	.037	.032	.028	

C Range: 0 - 360DEG  
C Interval: 22.5DEG  
Test Speed: HIGH  
Temperature:25.3℃  
Operators:Cloud  
Test Date:2024-10-15

γ Range: 0 - 180DEG  
γ Interval: 1.0DEG  
Test System:EVERFINE GO-2000B\_V1 SYSTEM V2.00.488  
Humidity:65.0%  
Test Distance:6.360m [K=1.0000]  
Remarks: ALL

UGR(Unified Glare Rating) Table

Test:U:24.00V I:0.7137A P:17.13W PF:1.000 Freq:0Hz Lamp Flux:632.17x1 lm										
NAME: SF18-24V-5050-72-RGBW(2700K)-80					TYPE:			WEIGHT:		
SPEC.:					DIM.: Length=1m			SERIAL No.:		
MFR.:					SUR.:			Shielding Angle:		
ceiling/cavity	0.7	0.7	0.5	0.5	0.3	0.7	0.7	0.5	0.5	0.3
walls	0.5	0.3	0.5	0.3	0.3	0.5	0.3	0.5	0.3	0.3
working plane	0.2	0.2	0.2	0.2	0.2	0.2	0.2	0.2	0.2	0.2
Room dimensions	Viewed crosswise					Viewed endwise				
x = 2H y = 2H	21.7	23.0	22.3	23.6	24.3	18.6	19.9	19.2	20.6	21.3
3H	24.6	25.8	25.2	26.5	27.2	20.3	21.6	21.0	22.2	23.0
4H	26.2	27.3	26.8	28.0	28.8	21.1	22.3	21.8	22.9	23.7
6H	27.9	29.0	28.6	29.7	30.5	21.8	22.9	22.5	23.6	24.4
8H	28.9	29.9	29.6	30.6	31.4	22.1	23.1	22.8	23.8	24.6
12H	30.0	31.0	30.7	31.7	32.5	22.3	23.3	23.0	24.0	24.9
4H 2H	22.2	23.4	22.9	24.0	24.8	20.2	21.3	20.8	22.0	22.8
3H	25.4	26.4	26.1	27.1	27.9	22.2	23.2	22.9	23.9	24.7
4H	27.2	28.1	27.9	28.8	29.7	23.2	24.1	23.9	24.8	25.7
6H	29.2	30.0	29.9	30.7	31.6	24.0	24.9	24.8	25.6	26.5
8H	30.2	31.0	31.0	31.8	32.7	24.4	25.2	25.1	25.9	26.8
12H	31.5	32.2	32.2	32.9	33.9	24.7	25.4	25.5	26.2	27.1
8H 4H	27.6	28.3	28.3	29.1	30.0	24.5	25.2	25.2	26.0	26.9
6H	29.8	30.5	30.6	31.3	32.2	25.8	26.4	26.5	27.2	28.1
8H	31.1	31.7	31.9	32.5	33.5	26.4	26.9	27.2	27.7	28.7
12H	32.6	33.1	33.4	33.9	34.9	26.9	27.4	27.7	28.2	29.2
12H 4H	27.6	28.3	28.3	29.1	30.0	24.9	25.6	25.7	26.4	27.3
6H	30.0	30.5	30.8	31.3	32.3	26.4	27.0	27.2	27.8	28.8
8H	31.4	31.9	32.2	32.7	33.7	27.2	27.7	28.0	28.5	29.5
Variations with the observer position at spacings(CIE Pub.117):										
S = 1.0H	+ 0.1 / - 0.1					+ 0.1 / - 0.1				
1.5H	+ 0.2 / - 0.3					+ 0.2 / - 0.3				
2.0H	+ 0.3 / - 0.4					+ 0.3 / - 0.5				

CIE Pub.117, 632.2 lm Total Lamp Luminous Flux Correct (8log(F/F0) = -1.6)  
Area: 0.017 m2

C Range: 0 - 360DEG  
C Interval: 22.5DEG  
Test Speed: HIGH  
Temperature:25.3℃  
Operators:Cloud  
Test Date:2024-10-15

γ Range: 0 - 180DEG  
γ Interval: 1.0DEG  
Test System:EVERFINE GO-2000B\_V1 SYSTEM V2.00.488  
Humidity:65.0%  
Test Distance:6.360m [K=1.0000]  
Remarks: ALL

## UTILIZATION FACTORS TABLE

Test:U:24.00V I:0.7137A P:17.13W PF:1.000 Freq:0Hz Lamp Flux:632.17x1 lm		
NAME: SF18-24V-5050-72-RGBW(2700K)-80	TYPE:	WEIGHT:
SPEC.:	DIM.: Length=1m	SERIAL No.:
MFR.:	SUR.:	Shielding Angle:

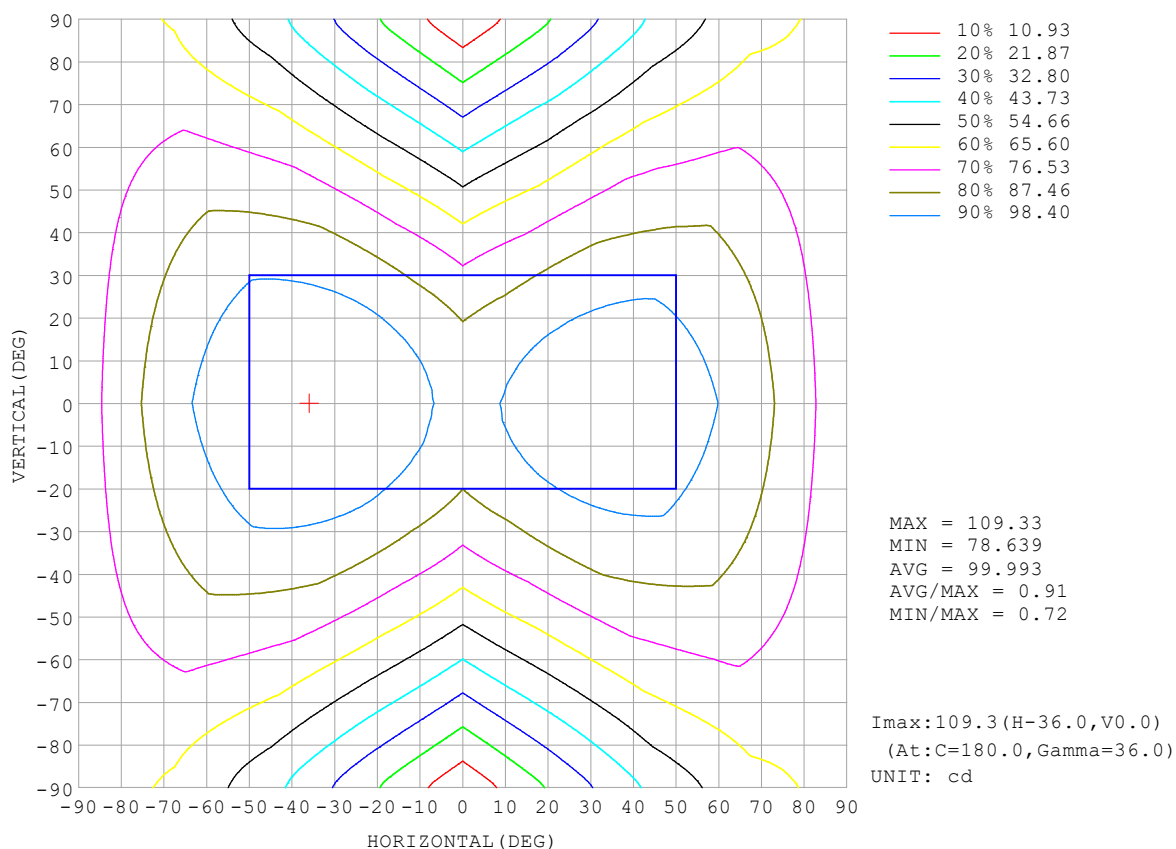
REFLECTANCE										
Ceiling	0.8	0.8	0.8	0.7	0.7	0.7	0.5	0.5	0.5	0
Walls	0.7	0.5	0.3	0.7	0.5	0.3	0.7	0.5	0.3	0
Working plane	0.2	0.2	0.2	0.2	0.2	0.2	0.2	0.2	0.2	0
ROOM INDEX	UTILIZATION FACTORS (PERCENT) $k(RI) \times RCR = 5$									
$k = 0.60$	44	31	24	42	30	23	40	29	23	16
0.80	53	39	31	51	38	30	48	36	29	21
1.00	60	47	38	58	45	37	54	45	36	26
1.25	67	54	45	64	52	44	59	49	42	31
1.50	72	59	50	69	57	49	64	54	46	35
2.00	80	68	59	76	66	57	70	61	54	41
2.50	85	74	65	81	71	63	73	65	59	44
3.00	89	79	71	84	75	68	76	69	63	48
4.00	94	85	78	89	81	75	81	74	69	52
5.00	97	89	83	92	85	80	83	78	73	55
ROOM INDEX	UF(total)									Direct
According to DIN EN 13032-2 2004			Suspended					SHRNOM = 1.25		

C Range: 0 - 360DEG  
 C Interval: 22.5DEG  
 Test Speed: HIGH  
 Temperature: 25.3°C  
 Operators: Cloud  
 Test Date: 2024-10-15

γ Range: 0 - 180DEG  
 γ Interval: 1.0DEG  
 Test System: EVERFINE GO-2000B\_V1 SYSTEM V2.00.488  
 Humidity: 65.0%  
 Test Distance: 6.360m [K=1.0000]  
 Remarks: ALL

## ISOCANDELA DIAGRAM

Test:U:24.00V I:0.7137A P:17.13W PF:1.000 Freq:0Hz Lamp Flux:632.17x1 lm		
NAME: SF18-24V-5050-72-RGBW(2700K)-80	TYPE:	WEIGHT:
SPEC.:	DIM.: Length=1m	SERIAL No.:
MFR.:	SUR.:	Shielding Angle:



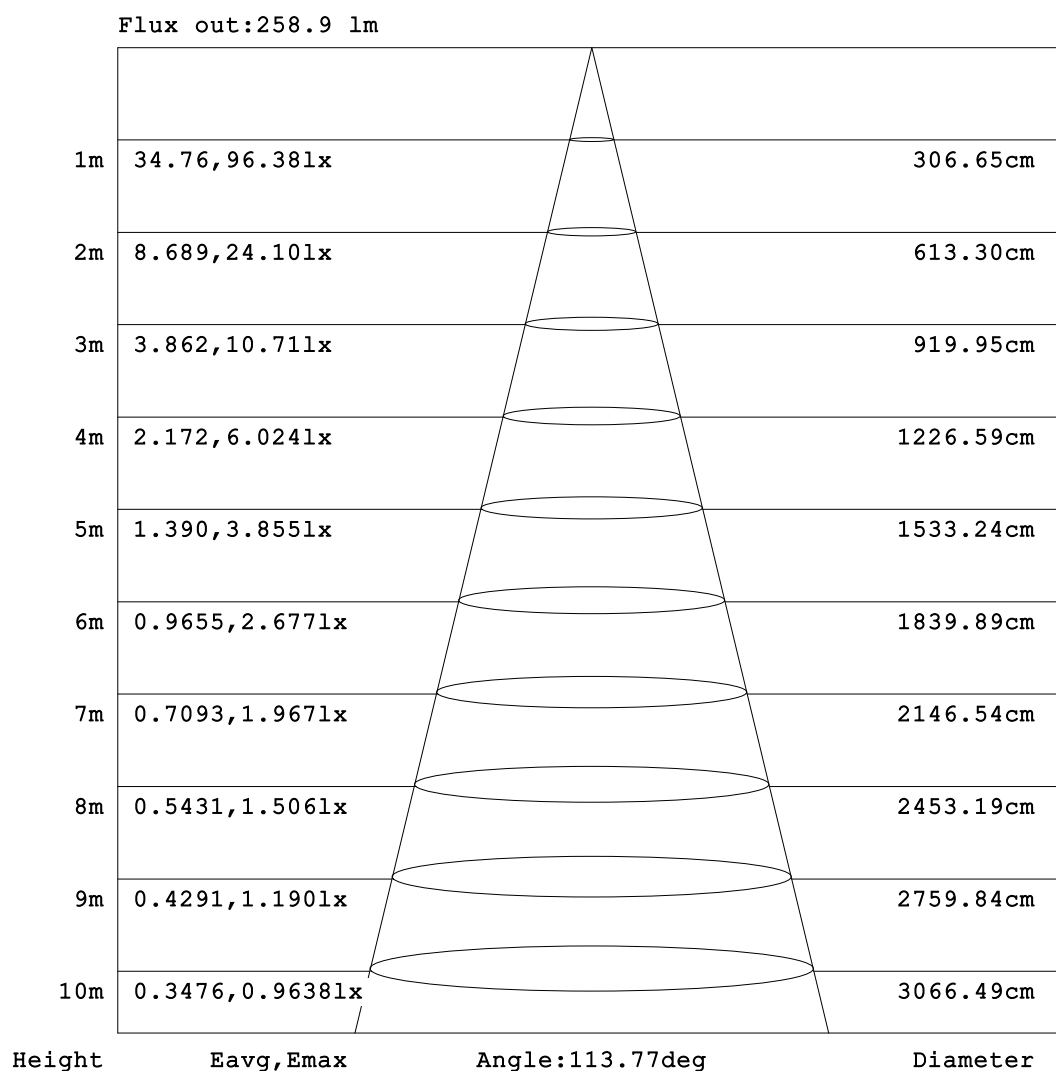
C Range: 0 - 360DEG  
C Interval: 22.5DEG  
Test Speed: HIGH  
Temperature:25.3℃  
Operators:Cloud  
Test Date:2024-10-15

γ Range: 0 - 180DEG  
γ Interval: 1.0DEG  
Test System:EVERFINE GO-2000B\_V1 SYSTEM V2.00.488  
Humidity:65.0%  
Test Distance:6.360m [K=1.0000]  
Remarks: ALL



## AAI Figure

Test:U:24.00V I:0.7137A P:17.13W PF:1.000 Freq:0Hz Lamp Flux:632.17x1 lm		
NAME: SF18-24V-5050-72-RGBW(2700K)-80	TYPE:	WEIGHT:
SPEC.:	DIM.: Length=1m	SERIAL No.:
MFR.:	SUR.:	Shielding Angle:



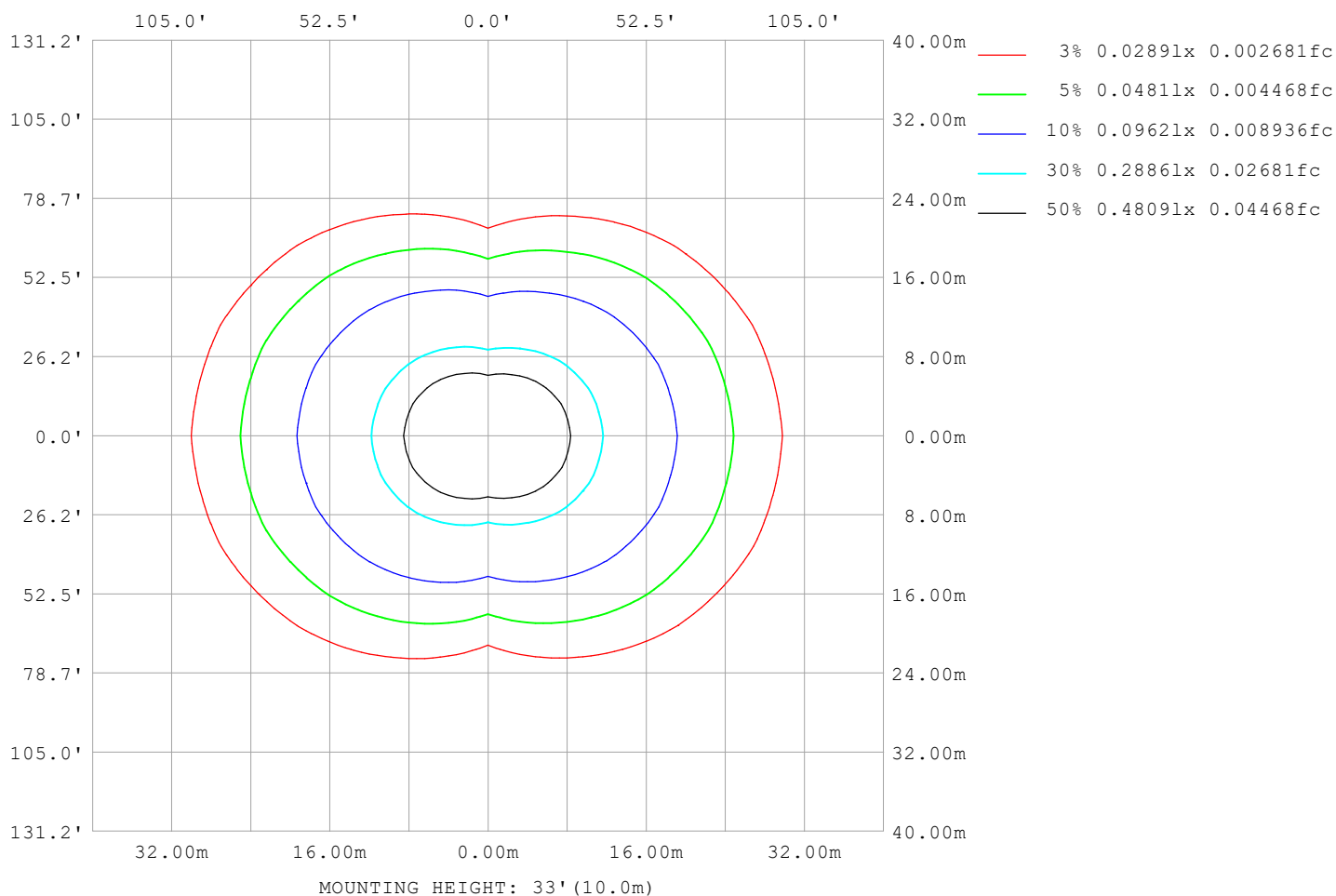
Note:The Curves indicate the illuminated area and the average illumination when the luminaire is at different distance.

C Range: 0 - 360DEG  
C Interval: 22.5DEG  
Test Speed: HIGH  
Temperature:25.3℃  
Operators:Cloud  
Test Date:2024-10-15

γ Range: 0 - 180DEG  
γ Interval: 1.0DEG  
Test System:EVERFINE GO-2000B\_V1 SYSTEM V2.00.488  
Humidity:65.0%  
Test Distance:6.360m [K=1.0000]  
Remarks: ALL

## ISOLUX DIAGRAM

Test:U:24.00V I:0.7137A P:17.13W PF:1.000 Freq:0Hz Lamp Flux:632.17x1 lm		
NAME: SF18-24V-5050-72-RGBW(2700K)-80	TYPE:	WEIGHT:
SPEC.:	DIM.: Length=1m	SERIAL No.:
MFR.:	SUR.:	Shielding Angle:



C Range: 0 - 360DEG  
C Interval: 22.5DEG  
Test Speed: HIGH  
Temperature: 25.3°C  
Operators: Cloud  
Test Date: 2024-10-15

γ Range: 0 - 180DEG  
γ Interval: 1.0DEG  
Test System: EVERFINE GO-2000B\_V1 SYSTEM V2.00.488  
Humidity: 65.0%  
Test Distance: 6.360m [K=1.0000]  
Remarks: ALL

## LED Avg.L Report

Test:U:24.00V I:0.7137A P:17.13W PF:1.000 Freq:0Hz Lamp Flux:632.17x1 lm		
NAME: SF18-24V-5050-72-RGBW(2700K)-80	TYPE:	WEIGHT:
SPEC.:	DIM.: Length=1m	SERIAL No.:
MFR.:	SUR.:	Shielding Angle:

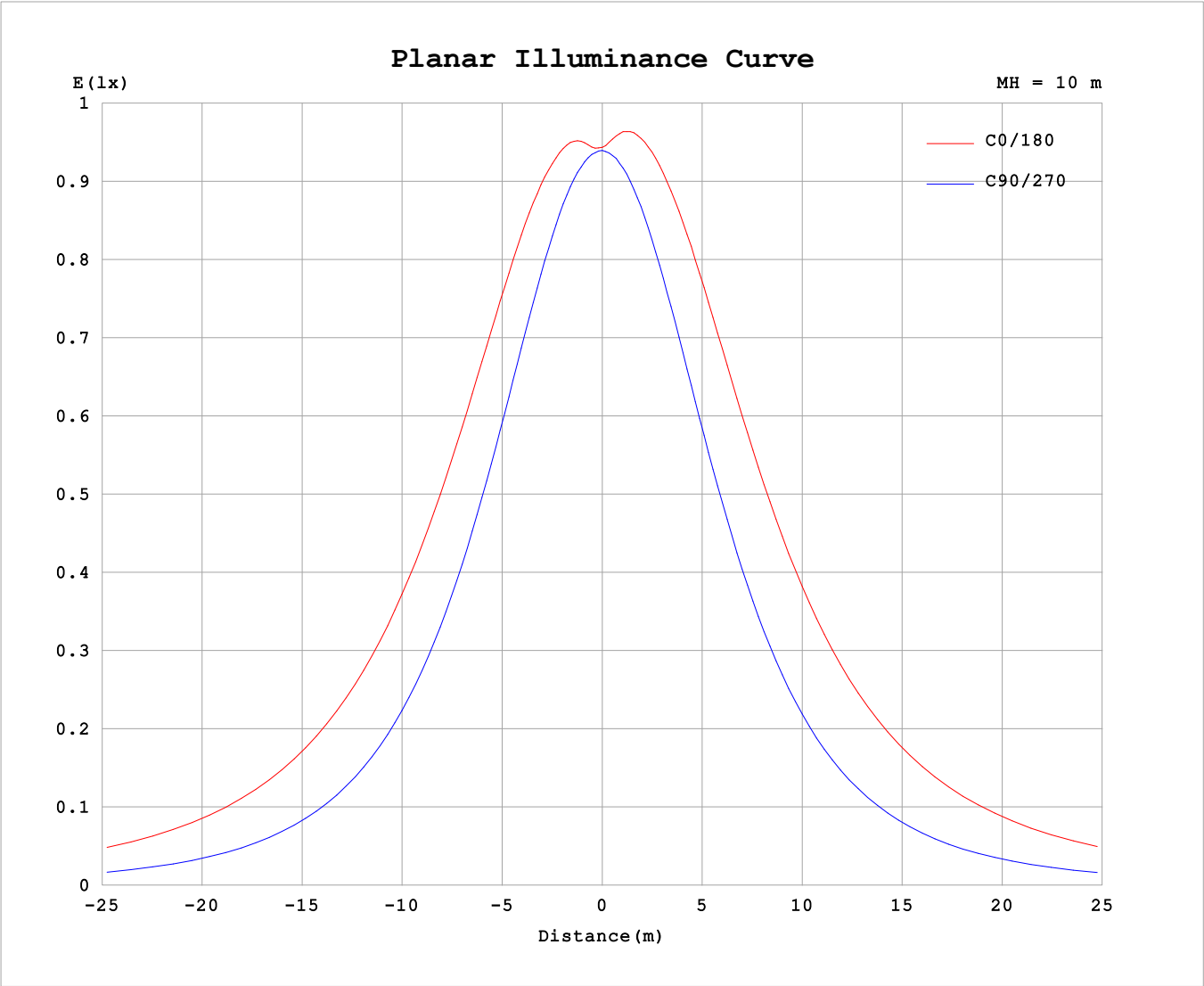
AvgL	cd/m2
L_0~180 (65) av	13315
L_0~180 (75) av	19621
L_0~180 (85) av	50426
L_90~270 (65) av	5033
L_90~270 (75) av	5114
L_90~270 (85) av	6097
L_45 (65) av	10415
L_45 (75) av	14572
L_45 (85) av	35249

Standard: GB/T 29293-2012

C Range: 0 - 360DEG  
C Interval: 22.5DEG  
Test Speed: HIGH  
Temperature:25.3℃  
Operators:Cloud  
Test Date:2024-10-15

γ Range: 0 - 180DEG  
γ Interval: 1.0DEG  
Test System:EVERFINE GO-2000B\_V1 SYSTEM V2.00.488  
Humidity:65.0%  
Test Distance:6.360m [K=1.0000]  
Remarks: ALL

Planar Illuminance Curve



C Range: 0 - 360DEG	γ Range: 0 - 180DEG
C Interval: 22.5DEG	γ Interval: 1.0DEG
Test Speed: HIGH	Test System:EVERFINE GO-2000B_V1 SYSTEM V2.00.488
Temperature:25.3℃	Humidity:65.0%
Operators:Cloud	Test Distance:6.360m [K=1.0000]
Test Date:2024-10-15	Remarks: ALL

## LUMINOUS DISTRIBUTION INTENSITY DATA

Test:U:24.00V I:0.7137A P:17.13W PF:1.000 Freq:0Hz Lamp Flux:632.17x1 lm																		
NAME: SF18-24V-5050-72-RGBW(2700K)-80										TYPE:					WEIGHT:			
SPEC.:										DIM.: Length=1m					SERIAL No.:			
MFR.:										SUR.:					Shielding Angle:			

Table--1

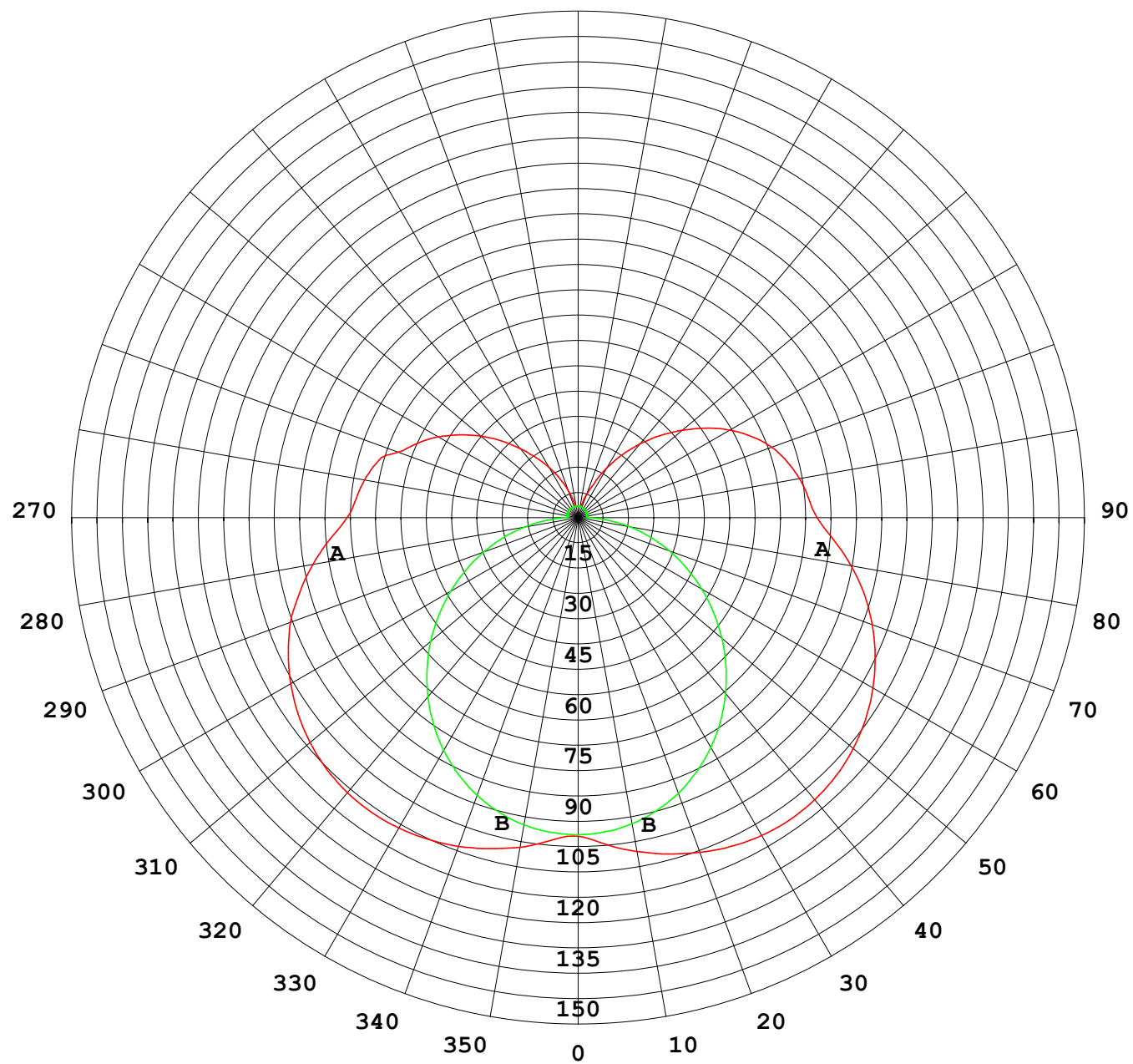
UNIT: cd

C (DEG) γ (DEG)		0	22.5	45	67.5	90	112.5	135	157.5	180	202.5	225	247.5	270	292.5	315	337.5			
0	94.1	94.1	94.1	94.1	94.1	94.1	94.1	94.1	94.1	94.1	94.1	94.1	94.1	94.1	94.1	94.1	94.1			
5	95.8	95.5	94.5	93.8	93.7	94.7	95.9	96.7	97.0	96.6	95.6	94.6	93.5	93.5	94.3	95.3				
10	98.8	98.2	96.2	93.6	92.5	94.9	97.7	99.5	100	99.4	97.4	94.7	92.2	93.1	95.8	97.9				
15	101	100	97.4	93.1	90.5	94.5	98.8	102	103	102	98.4	94.1	90.0	92.4	96.8	99.8				
20	103	102	97.7	91.9	87.6	93.4	99.3	104	105	103	98.8	92.7	87.0	91.0	96.9	101				
25	105	103	97.5	90.0	84.0	91.3	99.2	105	107	105	98.5	90.5	83.2	88.8	96.5	102				
30	106	104	96.6	87.3	79.8	88.6	98.5	106	108	106	97.8	87.7	78.7	85.9	95.4	103				
35	106	104	95.2	84.0	74.8	85.3	97.2	106	109	105	96.4	84.3	73.7	82.3	93.8	103				
40	106	103	93.2	80.2	69.3	81.4	95.1	105	109	105	94.3	80.3	68.1	78.3	91.7	102				
45	105	101	90.6	75.9	63.4	77.1	92.5	104	108	103	91.6	75.9	62.0	73.8	89.0	101				
50	103	99.4	87.4	71.1	57.1	72.2	89.1	102	106	101	88.3	71.1	55.7	68.9	85.8	98.4				
55	101	96.7	83.7	66.0	50.5	67.1	85.1	98.6	104	98.4	84.5	65.9	49.0	63.8	82.1	95.8				
60	98.0	93.3	79.4	60.7	43.7	61.5	80.7	95.0	101	95.0	80.2	60.5	42.4	58.6	78.0	92.6				
65	94.5	89.3	74.7	55.1	36.8	55.7	75.6	91.0	96.8	91.0	75.4	54.8	35.5	53.1	73.5	88.8				
70	90.5	85.0	69.6	49.1	29.8	49.6	70.3	86.4	92.5	86.4	70.2	48.8	28.8	47.4	68.2	84.2				
75	85.1	80.0	64.2	43.1	23.0	43.2	64.7	81.1	87.5	81.4	64.8	42.7	22.0	41.2	62.8	79.3				
80	79.6	74.3	58.5	36.9	16.1	36.7	58.6	75.3	81.9	75.8	59.0	36.5	15.3	35.1	57.3	73.8				
85	73.6	68.1	52.5	30.8	9.37	30.3	52.3	69.1	75.8	69.7	52.9	30.2	8.70	29.0	51.2	67.8				
90	68.3	62.6	46.7	25.1	3.20	24.9	47.2	64.1	70.6	64.7	47.8	25.0	2.73	23.6	46.0	62.5				
95	65.8	60.3	44.9	24.3	3.21	24.2	45.8	62.1	68.3	62.6	46.4	24.4	2.66	23.0	44.3	60.2				
100	64.1	58.8	43.7	20.3	3.33	23.3	44.6	60.4	66.4	60.8	45.2	23.4	2.66	18.1	43.1	58.8				
105	61.8	56.1	38.6	17.3	3.46	21.4	42.9	58.2	64.0	58.6	43.4	21.3	2.67	12.7	38.9	56.1				
110	56.6	50.6	35.2	15.7	3.50	19.0	40.2	55.3	60.9	55.7	40.5	18.8	2.71	12.7	35.0	51.3				
115	52.2	46.7	31.9	14.2	3.50	16.5	36.7	51.2	56.7	51.5	36.9	16.3	2.80	12.3	26.2	45.8				
120	47.8	42.6	28.9	12.2	3.52	14.0	32.7	46.6	51.8	46.8	32.8	13.8	2.88	11.3	25.1	41.7				
125	42.7	38.0	25.0	10.3	3.52	11.3	28.6	41.3	46.1	41.4	28.7	11.1	2.93	9.47	22.1	32.0				
130	37.5	33.5	20.4	8.77	3.52	8.99	24.5	35.9	40.2	35.9	24.5	8.79	2.98	7.63	18.6	29.6				
135	32.1	28.9	16.6	7.16	3.52	6.97	20.3	30.5	34.3	30.5	20.4	6.83	3.05	6.11	15.5	26.1				
140	26.6	24.0	13.3	5.76	3.50	5.23	16.1	25.1	28.5	25.1	16.1	5.12	3.12	4.90	12.5	22.2				
145	21.6	17.3	10.3	4.61	3.49	3.86	12.2	19.8	22.7	19.8	12.2	3.76	3.18	3.96	9.69	16.3				
150	17.1	12.3	7.98	3.78	3.48	3.45	8.77	14.4	16.9	14.5	8.82	3.26	3.22	3.35	7.23	12.4				
155	12.6	8.96	5.85	3.45	3.45	3.45	5.86	9.97	10.9	10.0	5.97	3.27	3.28	3.32	5.37	8.51				
160	8.39	6.10	4.31	3.44	3.44	3.45	3.73	6.23	7.06	6.31	3.76	3.32	3.34	3.37	4.00	5.71				
165	4.92	4.08	3.50	3.43	3.44	3.45	3.50	3.58	4.04	3.59	3.45	3.37	3.39	3.41	3.53	3.90				
170	3.46	3.48	3.47	3.43	3.42	3.45	3.50	3.50	3.43	3.45	3.47	3.41	3.42	3.44	3.53	3.55				
175	3.47	3.53	3.47	3.43	3.41	3.46	3.51	3.54	3.47	3.48	3.50	3.43	3.42	3.45	3.53	3.56				
180	3.49	3.54	3.48	3.45	3.41	3.46	3.53	3.57	3.49	3.52	3.50	3.43	3.42	3.47	3.53	3.57				

C Range: 0 - 360DEG  
C Interval: 22.5DEG  
Test Speed: HIGH  
Temperature:25.3℃  
Operators:Cloud  
Test Date:2024-10-15

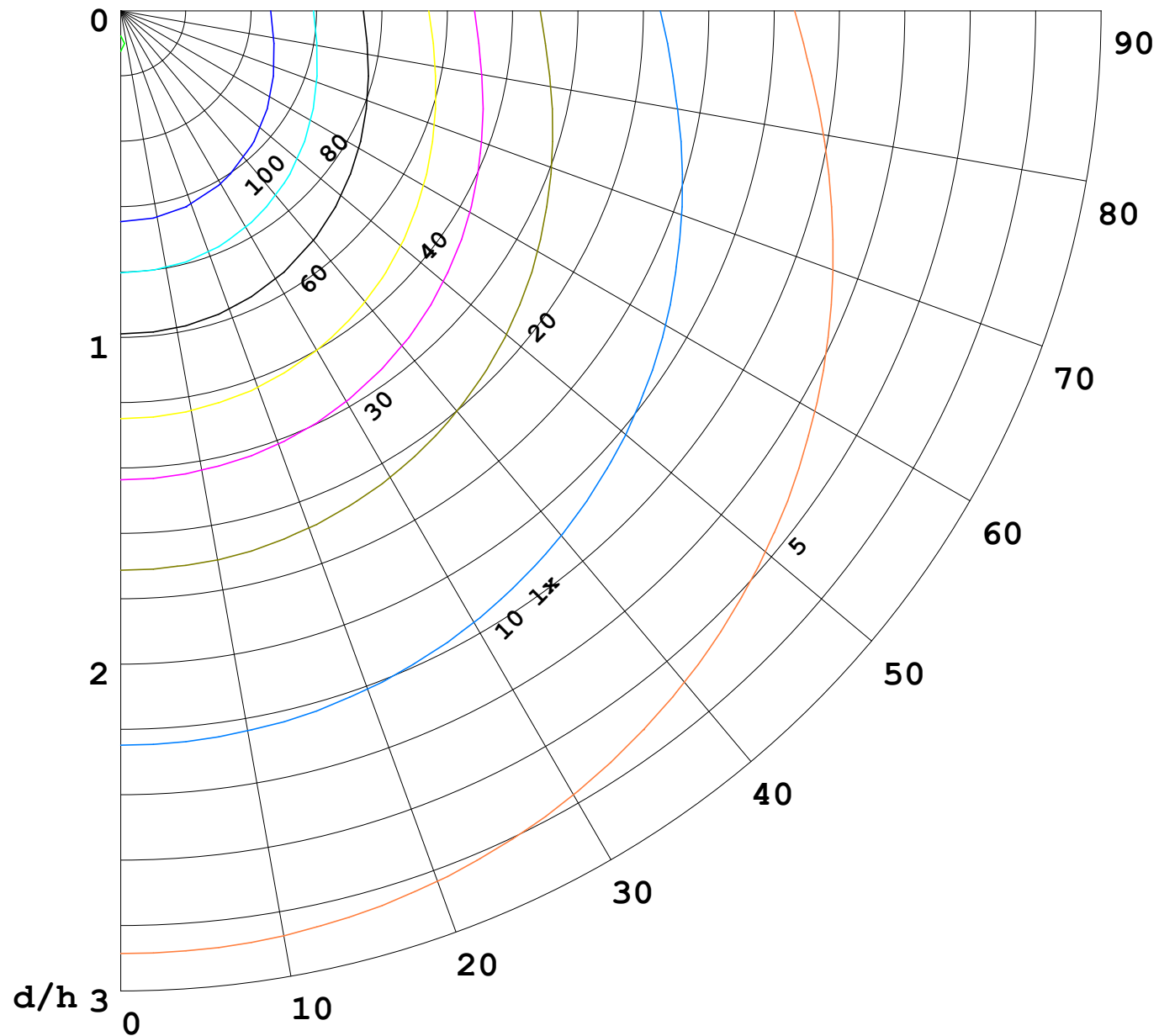
γ Range: 0 - 180DEG  
γ Interval: 1.0DEG  
Test System:EVERFINE GO-2000B\_V1 SYSTEM V2.00.488  
Humidity:65.0%  
Test Distance:6.360m [K=1.0000]  
Remarks: ALL

I (cd)



1000 lm

$\kappa = 1$



F = 1000 lm  
 K = 0.7  
 Hcc = 0.8 m  
 Hfc = 0.0 m  
 Eave = 100 lx

	Pcc	Pw	Pfc
————	70	50	30
————	50	30	20

