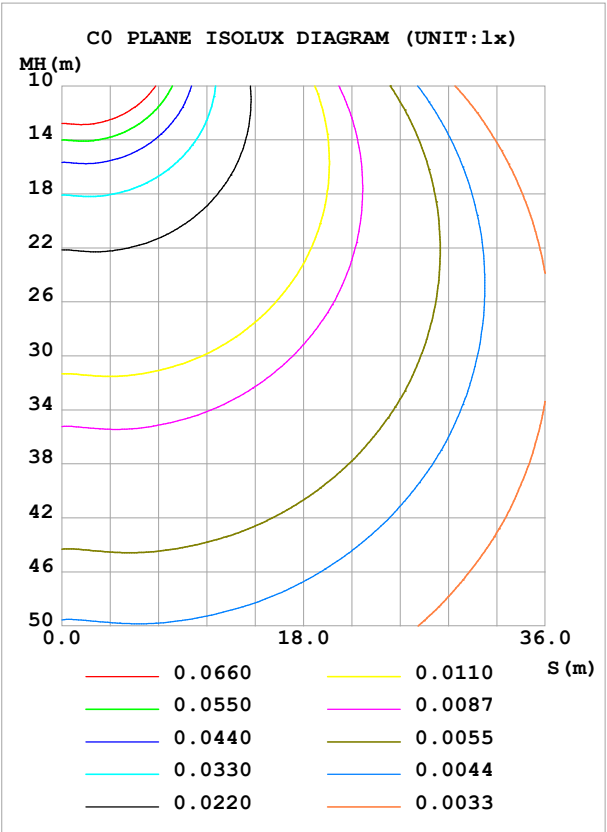
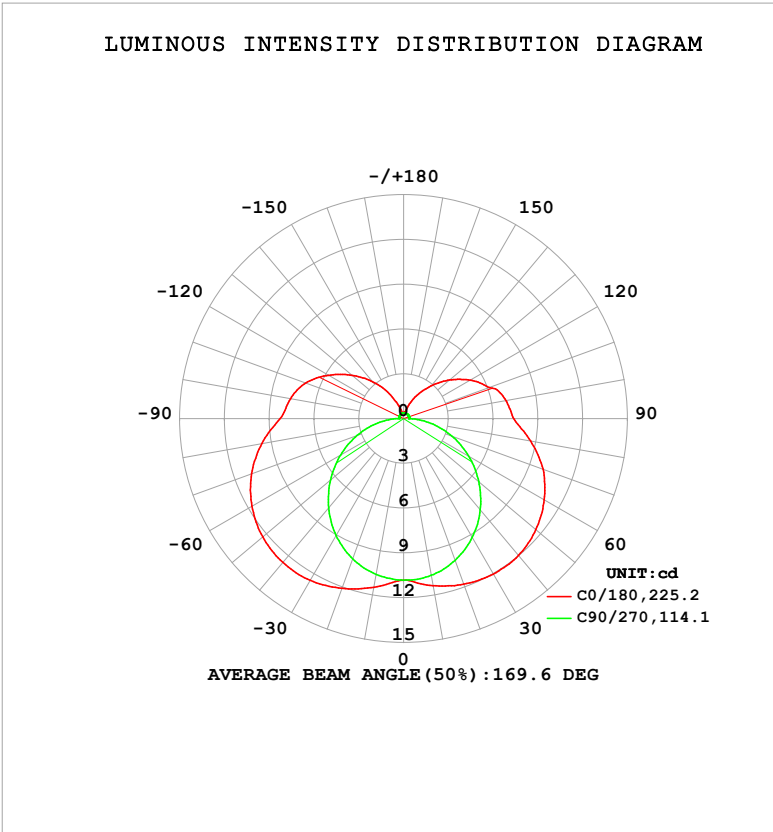


LUMINAIRE PHOTOMETRIC TEST REPORT

Test:U:24.00V I:0.1426A P:3.422W PF:1.000 Freq:0Hz Lamp Flux:71.7882x1 lm		
NAME: SF18-24V-5050-72-RGBW(3000K)-80	TYPE:	WEIGHT:
SPEC.:	DIM.: Length=1m	SERIAL No.:
MFR.:	SUR.:	Shielding Angle:

DATA OF LAMP		PHOTOMETRIC DATA				Eff: 20.98 lm/W
MODEL		Imax (cd)	12.60	S/MH(C0/180)	1.74	
NOMINAL POWER(W)		LOR(%)	100.0	S/MH(C90/270)	1.24	
RATED VOLTAGE(V)		TOTAL FLUX(lm)	71.788	η UP,DN(C0-180)	12.7,37.2	
NOMINAL FLUX(lm)	71.7882	CIE CLASS	SEMI-D.	η UP,DN(C180-360)	12.8,37.3	
LAMPS INSIDE	1	η up (%)	25.5	CIBSE SHR NOM	1.50	
TEST VOLTAGE(V)		η down (%)	74.5	CIBSE SHR MAX	1.55	



C Range: 0 - 360DEG
C Interval: 22.5DEG
Test Speed: HIGH
Temperature: 25.3 °C
Operators: Cloud
Test Date: 2024-10-15

γ Range: 0 - 180DEG
γ Interval: 1.0DEG
Test System: EVERFINE GO-2000B_V1 SYSTEM V2.00.488
Humidity: 65.0%
Test Distance: 6.360m [K=1.0000]
Remarks: RED

ZONAL FLUX DIAGRAM

ZONAL FLUX DIAGRAM:

γ	C0	C45	C90	C135	C180	C225	C270	C315	γ	Φ zone	Φ total	%lum, lamp
10	11.36	11.12	10.66	11.18	11.48	11.16	10.60	11.10	0- 10	1.049	1.049	1.46,1.46
20	11.81	11.23	10.11	11.39	12.10	11.33	10.000	11.15	10- 20	3.161	4.210	5.86,5.86
30	12.03	11.08	9.189	11.35	12.52	11.24	9.054	10.92	20- 30	5.129	9.339	13,13
40	11.97	10.62	7.989	11.02	12.59	10.89	7.824	10.43	30- 40	6.741	16.08	22.4,22.4
50	11.57	9.879	6.581	10.36	12.33	10.23	6.398	9.688	40- 50	7.821	23.90	33.3,33.3
60	10.88	8.895	5.042	9.419	11.73	9.348	4.871	8.727	50- 60	8.270	32.17	44.8,44.8
70	9.947	7.708	3.452	8.237	10.84	8.234	3.318	7.556	60- 70	8.071	40.24	56.1,56.1
80	8.643	6.384	1.858	6.905	9.643	6.946	1.774	6.244	70- 80	7.258	47.50	66.2,66.2
90	7.391	5.055	0.3656	5.529	8.282	5.614	0.3296	4.973	80- 90	5.966	53.47	74.5,74.5
100	6.965	4.755	0.3528	5.171	7.701	5.242	0.3210	4.679	90-100	5.072	58.54	81.5,81.5
110	6.128	3.843	0.3702	4.542	6.984	4.609	0.3297	3.353	100-110	4.407	62.95	87.7,87.7
120	5.168	3.112	0.3731	3.683	5.822	3.714	0.3470	2.892	110-120	3.457	66.40	92.5,92.5
130	4.040	2.184	0.3788	2.778	4.529	2.790	0.3615	1.977	120-130	2.473	68.88	95.9,95.9
140	2.855	1.401	0.3789	1.855	3.236	1.858	0.3760	1.354	130-140	1.563	70.44	98.1,98.1
150	1.820	0.8377	0.3846	1.050	1.947	1.041	0.3846	0.7867	140-150	0.8262	71.27	99.3,99.3
160	0.9000	0.4535	0.3876	0.4734	0.8779	0.4585	0.4020	0.4437	150-160	0.3547	71.62	99.8,99.8
170	0.4135	0.4128	0.3904	0.4095	0.4048	0.4128	0.4049	0.4123	160-170	0.1289	71.75	99.9,99.9
180	0.4105	0.4128	0.4020	0.4095	0.4048	0.4128	0.4049	0.4095	170-180	0.0391	71.79	100,100
DEG	LUMINOUS INTENSITY:cd									UNIT:lm		

Conical surface Flux(90deg): 19.894 lm

%lum = 27.7%

%lamp = 27.7%

Conical surface Flux(130deg): 36.271 lm

%lum = 50.5%

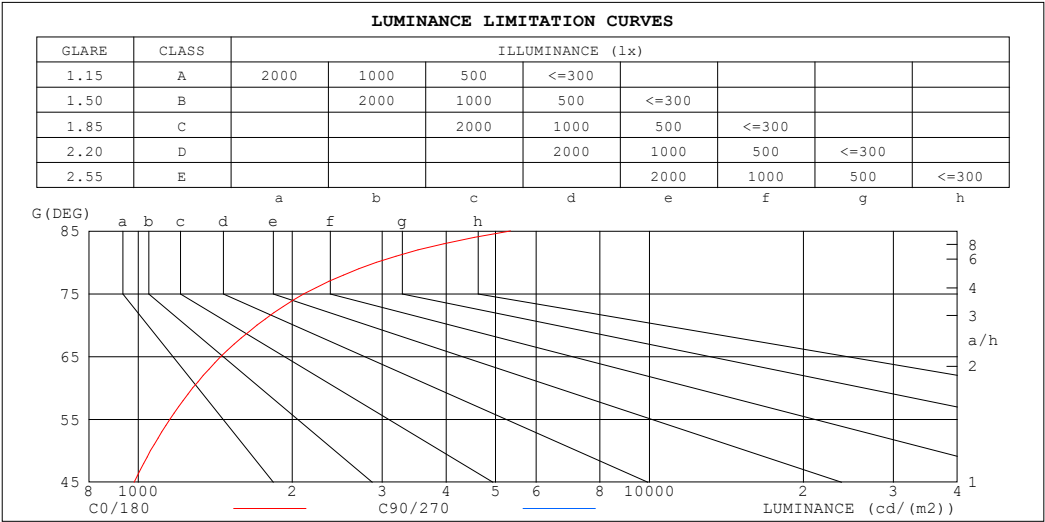
%lamp = 50.5%

C Range: 0 - 360DEG
 C Interval: 22.5DEG
 Test Speed: HIGH
 Temperature:25.3℃
 Operators:Cloud
 Test Date:2024-10-15

γ Range: 0 - 180DEG
 γ Interval: 1.0DEG
 Test System:EVERFINE GO-2000B_V1 SYSTEM V2.00.488
 Humidity:65.0%
 Test Distance:6.360m [K=1.0000]
 Remarks: RED

LUMINANCE LIMITATION CURVES

Test:U:24.00V I:0.1426A P:3.422W PF:1.000 Freq:0Hz Lamp Flux:71.7882x1 lm		
NAME: SF18-24V-5050-72-RGBW(3000K)-80	TYPE:	WEIGHT:
SPEC.:	DIM.: Length=1m	SERIAL No.:
MFR.:	SUR.:	Shielding Angle:



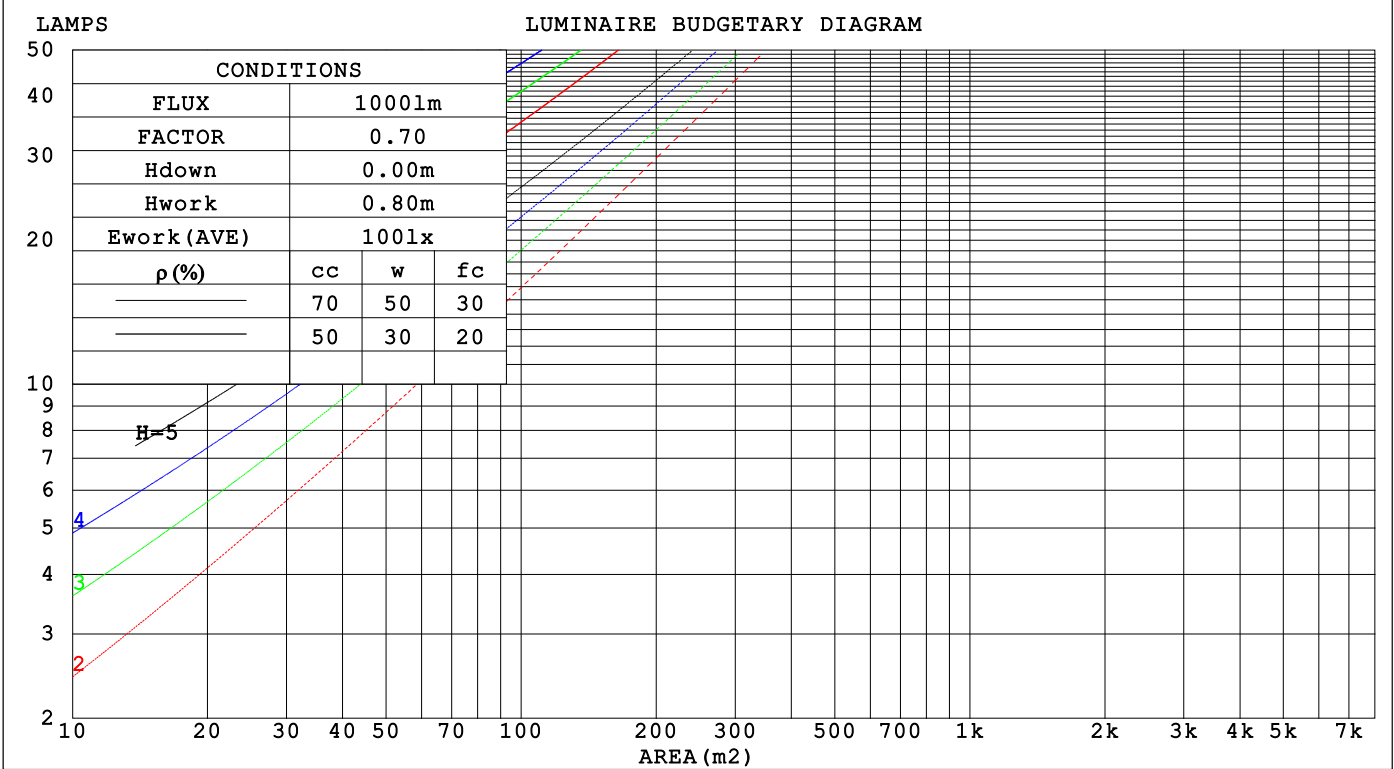
LUMINANCE cd/(m2)		
G (DEG)	C0/180	C90/270
85	5346	726
80	2923	628
75	2110	603
70	1708	592
65	1451	589
60	1278	592
55	1154	596
50	1057	601
45	981	606

C Range: 0 - 360DEG	γ Range: 0 - 180DEG
C Interval: 22.5DEG	γ Interval: 1.0DEG
Test Speed: HIGH	Test System:EVERFINE GO-2000B_V1 SYSTEM V2.00.488
Temperature:25.3℃	Humidity:65.0%
Operators:Cloud	Test Distance:6.360m [K=1.0000]
Test Date:2024-10-15	Remarks: RED

CU AND LUMINAIRE BUDGETARY ESTIMATE DIAGRAM

Test:U:24.00V I:0.1426A P:3.422W PF:1.000 Freq:0Hz		
Lamp Flux:71.7882x1 lm		
NAME: SF18-24V-5050-72-RGBW(3000K)-80	TYPE:	WEIGHT:
SPEC.:	DIM.: Length=1m	SERIAL No.:
MFR.:	SUR.:	Shielding Angle:

pcc	80%			70%			50%			30%			10%			0
pw	50%	30%	10%	50%	30%	10%	50%	30%	10%	50%	30%	10%	50%	30%	10%	0
pfc	20%			20%			20%			20%			20%			0
RCR	RCR:Room Cavity Ratio															



C Range: 0 - 360DEG
C Interval: 22.5DEG
Test Speed: HIGH
Temperature:25.3℃
Operators:Cloud
Test Date:2024-10-15

γ Range: 0 - 180DEG
γ Interval: 1.0DEG
Test System:EVERFINE GO-2000B_V1 SYSTEM V2.00.488
Humidity:65.0%
Test Distance:6.360m [K=1.0000]
Remarks: RED

WEC AND CCEC

Test:U:24.00V I:0.1426A P:3.422W PF:1.000 Freq:0Hz Lamp Flux:71.7882x1 lm					
NAME: SF18-24V-5050-72-RGBW(3000K)-80			TYPE:		WEIGHT:
SPEC.:			DIM.: Length=1m		SERIAL No.:
MFR.:			SUR.:		Shielding Angle:

pcc	80%			70%			50%			30%			10%			0														
pw	50%	30%	10%	50%	30%	10%	50%	30%	10%	50%	30%	10%	50%	30%	10%	0														
pfc	20%			20%			20%			20%			20%			0														
RCR	RCR:Room Cavity Ratio															Wall Exitance Coefficients(WEC)														
0.0																														
1.0	.401	.228	.072	.386	.220	.070	.357	.205	.065	.332	.191	.061	.308	.178	.057															
2.0	.343	.188	.058	.329	.181	.056	.304	.169	.052	.280	.157	.049	.258	.146	.046															
3.0	.302	.161	.048	.290	.155	.047	.267	.145	.044	.245	.134	.041	.225	.125	.039															
4.0	.271	.141	.041	.260	.136	.040	.239	.127	.038	.219	.118	.035	.201	.109	.033															
5.0	.245	.125	.036	.235	.121	.035	.216	.112	.033	.198	.104	.031	.181	.097	.029															
6.0	.224	.112	.032	.215	.109	.031	.197	.101	.029	.181	.094	.028	.165	.087	.026															
7.0	.206	.102	.029	.198	.099	.028	.182	.092	.026	.166	.085	.025	.152	.079	.023															
8.0	.191	.093	.026	.183	.090	.025	.168	.084	.024	.154	.078	.023	.141	.072	.021															
9.0	.178	.086	.024	.171	.083	.023	.157	.077	.022	.144	.072	.021	.131	.067	.019															
10.0	.166	.080	.022	.159	.077	.021	.147	.072	.020	.134	.067	.019	.123	.062	.018															

pcc	80%			70%			50%			30%			10%			0
pw	50%	30%	10%	50%	30%	10%	50%	30%	10%	50%	30%	10%	50%	30%	10%	0
pfc	20%			20%			20%			20%			20%			0
RCR	RCR:Room Cavity Ratio						Ceiling Cavity Exitance Coefficients (CCEC)									
0.0	.385	.385	.385	.329	.329	.329	.225	.225	.225	.129	.129	.129	.041	.041	.041	
1.0	.383	.351	.323	.327	.302	.278	.224	.207	.192	.129	.120	.112	.041	.039	.036	
2.0	.376	.329	.289	.322	.283	.250	.221	.196	.174	.127	.114	.102	.041	.037	.033	
3.0	.369	.313	.268	.316	.270	.232	.217	.188	.163	.125	.110	.096	.040	.036	.031	
4.0	.362	.301	.254	.310	.260	.221	.213	.181	.156	.123	.106	.092	.040	.035	.030	
5.0	.354	.291	.245	.304	.252	.213	.209	.176	.150	.121	.103	.089	.039	.034	.029	
6.0	.346	.283	.238	.298	.245	.207	.205	.172	.147	.119	.101	.087	.038	.033	.029	
7.0	.339	.277	.233	.292	.240	.203	.202	.168	.144	.117	.099	.086	.038	.032	.028	
8.0	.333	.272	.230	.286	.236	.200	.198	.165	.142	.115	.098	.085	.037	.032	.028	
9.0	.326	.267	.227	.281	.232	.198	.195	.163	.140	.113	.096	.084	.037	.032	.028	
10.0	.320	.263	.224	.276	.228	.196	.192	.161	.139	.112	.095	.083	.036	.031	.028	

C Range: 0 - 360DEG
C Interval: 22.5DEG
Test Speed: HIGH
Temperature:25.3℃
Operators:Cloud
Test Date:2024-10-15

γ Range: 0 - 180DEG
γ Interval: 1.0DEG
Test System:EVERFINE GO-2000B_V1 SYSTEM V2.00.488
Humidity:65.0%
Test Distance:6.360m [K=1.0000]
Remarks: RED

UGR(Unified Glare Rating) Table

Test:U:24.00V I:0.1426A P:3.422W PF:1.000 Freq:0Hz Lamp Flux:71.7882x1 lm										
NAME: SF18-24V-5050-72-RGBW(3000K)-80					TYPE:			WEIGHT:		
SPEC.:					DIM.: Length=1m			SERIAL No.:		
MFR.:					SUR.:			Shielding Angle:		
ceiling/cavity	0.7	0.7	0.5	0.5	0.3	0.7	0.7	0.5	0.5	0.3
walls	0.5	0.3	0.5	0.3	0.3	0.5	0.3	0.5	0.3	0.3
working plane	0.2	0.2	0.2	0.2	0.2	0.2	0.2	0.2	0.2	0.2
Room dimensions	Viewed crosswise					Viewed endwise				
x = 2H y = 2H	21.5	22.8	22.1	23.5	24.2	18.6	20.0	19.2	20.6	21.3
3H	24.4	25.6	25.0	26.3	27.0	20.4	21.6	21.0	22.2	23.0
4H	26.0	27.1	26.6	27.8	28.5	21.1	22.3	21.8	23.0	23.7
6H	27.7	28.7	28.3	29.4	30.2	21.8	22.9	22.5	23.6	24.4
8H	28.6	29.6	29.3	30.3	31.1	22.1	23.1	22.8	23.8	24.6
12H	29.7	30.7	30.3	31.4	32.2	22.3	23.3	23.0	24.0	24.8
4H 2H	22.1	23.2	22.7	23.9	24.7	20.1	21.3	20.8	21.9	22.7
3H	25.2	26.2	25.9	26.9	27.7	22.1	23.1	22.8	23.8	24.7
4H	27.0	27.9	27.7	28.6	29.5	23.1	24.0	23.8	24.7	25.6
6H	28.9	29.7	29.6	30.5	31.4	24.0	24.8	24.7	25.5	26.4
8H	29.9	30.7	30.7	31.5	32.4	24.3	25.1	25.1	25.9	26.8
12H	31.1	31.9	31.9	32.6	33.5	24.6	25.4	25.4	26.1	27.0
8H 4H	27.3	28.1	28.1	28.9	29.8	24.4	25.1	25.1	25.9	26.8
6H	29.6	30.2	30.3	31.0	31.9	25.6	26.3	26.4	27.1	28.0
8H	30.8	31.4	31.6	32.2	33.2	26.2	26.8	27.0	27.6	28.6
12H	32.3	32.8	33.1	33.6	34.6	26.7	27.3	27.6	28.1	29.1
12H 4H	27.4	28.1	28.1	28.8	29.8	24.8	25.5	25.5	26.2	27.2
6H	29.7	30.3	30.5	31.1	32.0	26.3	26.8	27.0	27.6	28.6
8H	31.1	31.6	31.9	32.4	33.4	27.0	27.6	27.8	28.4	29.3
Variations with the observer position at spacings(CIE Pub.117):										
S = 1.0H	+ 0.1 / - 0.1					+ 0.1 / - 0.1				
1.5H	+ 0.2 / - 0.3					+ 0.2 / - 0.3				
2.0H	+ 0.3 / - 0.4					+ 0.3 / - 0.5				

CIE Pub.117, 71.79 lm Total Lamp Luminous Flux Correct (8log(F/F0) = -9.2)
Area: 0.017 m2

C Range: 0 - 360DEG
C Interval: 22.5DEG
Test Speed: HIGH
Temperature:25.3℃
Operators:Cloud
Test Date:2024-10-15

γ Range: 0 - 180DEG
γ Interval: 1.0DEG
Test System:EVERFINE GO-2000B_V1 SYSTEM V2.00.488
Humidity:65.0%
Test Distance:6.360m [K=1.0000]
Remarks: RED

UTILIZATION FACTORS TABLE

Test:U:24.00V I:0.1426A P:3.422W PF:1.000 Freq:0Hz Lamp Flux:71.7882x1 lm		
NAME: SF18-24V-5050-72-RGBW(3000K)-80	TYPE:	WEIGHT:
SPEC.:	DIM.: Length=1m	SERIAL No.:
MFR.:	SUR.:	Shielding Angle:

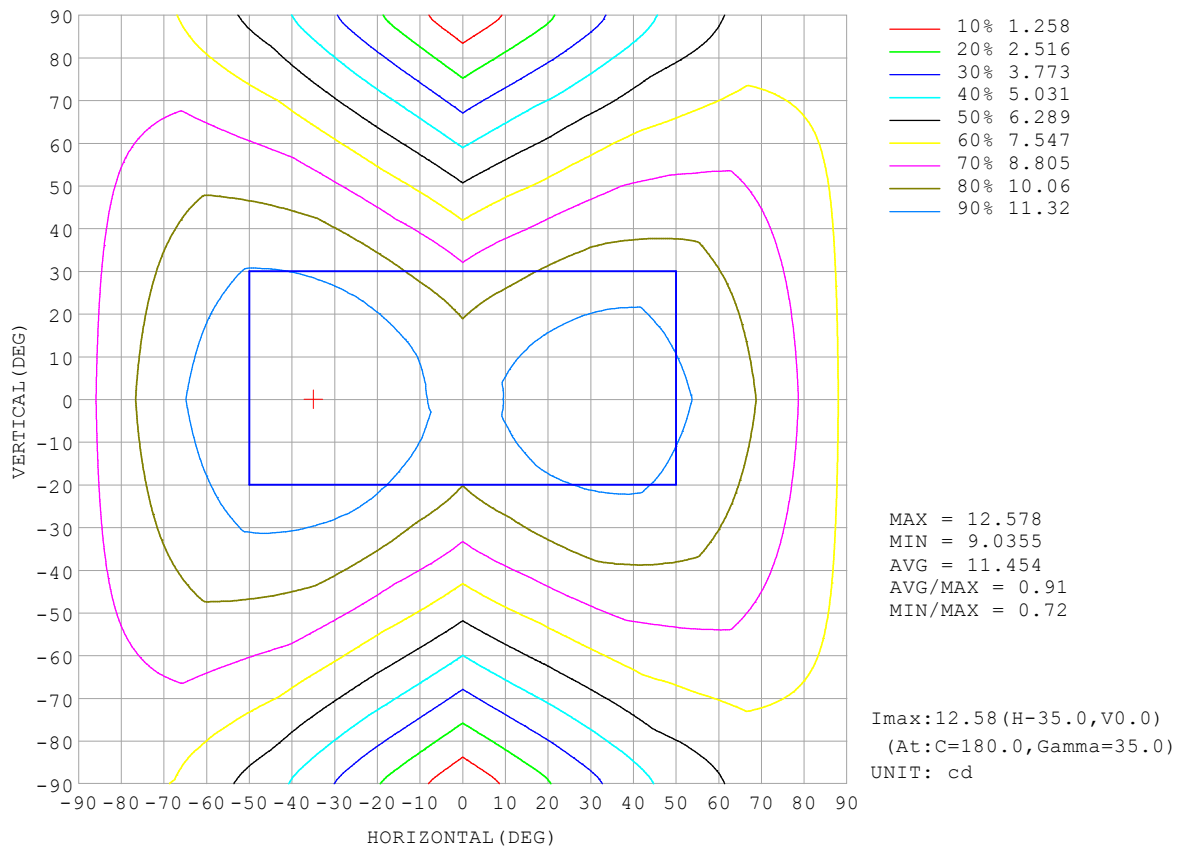
REFLECTANCE										
Ceiling	0.8	0.8	0.8	0.7	0.7	0.7	0.5	0.5	0.5	0
Walls	0.7	0.5	0.3	0.7	0.5	0.3	0.7	0.5	0.3	0
Working plane	0.2	0.2	0.2	0.2	0.2	0.2	0.2	0.2	0.2	0
ROOM INDEX	UTILIZATION FACTORS (PERCENT) $k(RI) \times RCR = 5$									
$k = 0.60$	44	31	24	43	31	23	40	29	23	16
0.80	53	39	31	51	38	31	48	37	30	21
1.00	60	47	38	58	46	37	54	46	36	27
1.25	67	54	45	65	52	44	60	49	42	31
1.50	73	60	51	69	58	49	64	54	47	35
2.00	80	68	59	77	66	58	70	61	54	41
2.50	85	74	65	81	71	63	74	66	59	45
3.00	89	79	71	85	76	68	77	70	64	48
4.00	94	85	78	89	82	75	81	75	69	53
5.00	97	89	83	92	86	80	83	78	73	56
ROOM INDEX	UF (total)									Direct
According to DIN EN 13032-2 2004			Suspended					SHRNOM = 1.25		

C Range: 0 - 360DEG
 C Interval: 22.5DEG
 Test Speed: HIGH
 Temperature: 25.3°C
 Operators: Cloud
 Test Date: 2024-10-15

γ Range: 0 - 180DEG
 γ Interval: 1.0DEG
 Test System: EVERFINE GO-2000B_V1 SYSTEM V2.00.488
 Humidity: 65.0%
 Test Distance: 6.360m [K=1.0000]
 Remarks: RED

ISOCANDELA DIAGRAM

Test:U:24.00V I:0.1426A P:3.422W PF:1.000 Freq:0Hz Lamp Flux:71.7882x1 lm		
NAME: SF18-24V-5050-72-RGBW(3000K)-80	TYPE:	WEIGHT:
SPEC.:	DIM.: Length=1m	SERIAL No.:
MFR.:	SUR.:	Shielding Angle:

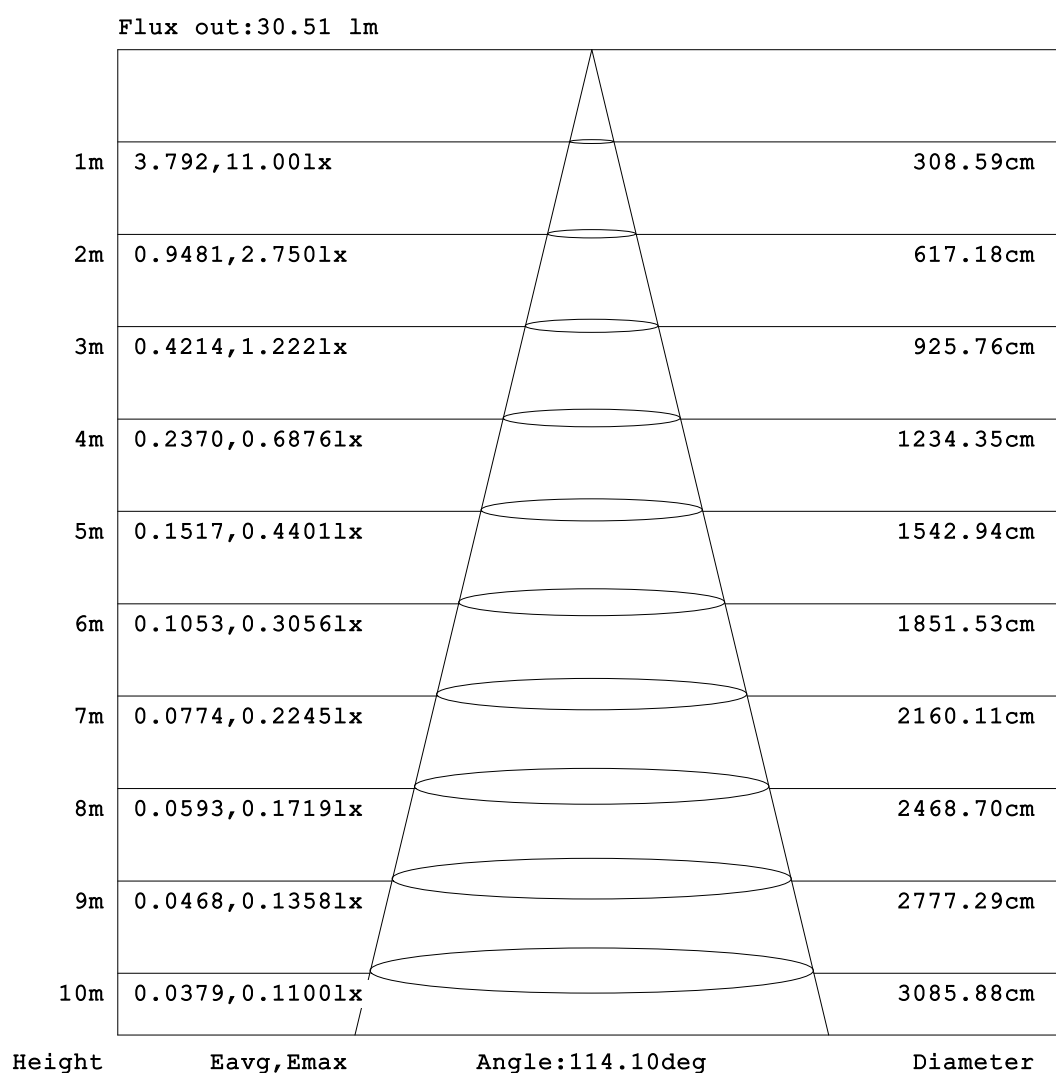


C Range: 0 - 360DEG
C Interval: 22.5DEG
Test Speed: HIGH
Temperature:25.3℃
Operators:Cloud
Test Date:2024-10-15

γ Range: 0 - 180DEG
γ Interval: 1.0DEG
Test System:EVERFINE GO-2000B_V1 SYSTEM V2.00.488
Humidity:65.0%
Test Distance:6.360m [K=1.0000]
Remarks: RED

AAI Figure

Test:U:24.00V I:0.1426A P:3.422W PF:1.000 Freq:0Hz Lamp Flux:71.7882x1 lm		
NAME: SF18-24V-5050-72-RGBW(3000K)-80	TYPE:	WEIGHT:
SPEC.:	DIM.: Length=1m	SERIAL No.:
MFR.:	SUR.:	Shielding Angle:



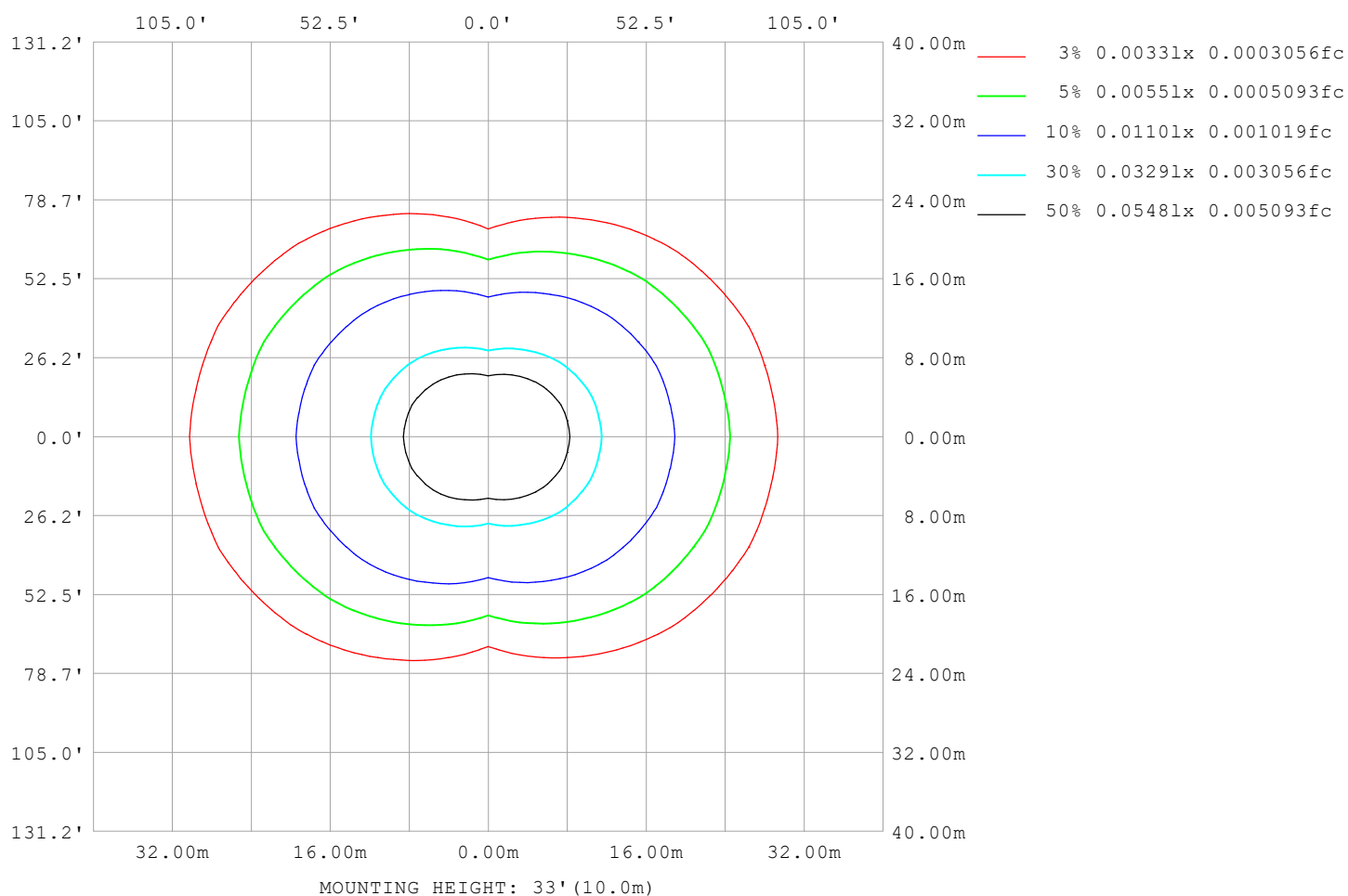
Note:The Curves indicate the illuminated area and the average illumination when the luminaire is at different distance.

C Range: 0 - 360DEG
C Interval: 22.5DEG
Test Speed: HIGH
Temperature:25.3℃
Operators:Cloud
Test Date:2024-10-15

γ Range: 0 - 180DEG
γ Interval: 1.0DEG
Test System:EVERFINE GO-2000B_V1 SYSTEM V2.00.488
Humidity:65.0%
Test Distance:6.360m [K=1.0000]
Remarks: RED

ISOLUX DIAGRAM

Test:U:24.00V I:0.1426A P:3.422W PF:1.000 Freq:0Hz Lamp Flux:71.7882x1 lm		
NAME: SF18-24V-5050-72-RGBW(3000K)-80	TYPE:	WEIGHT:
SPEC.:	DIM.: Length=1m	SERIAL No.:
MFR.:	SUR.:	Shielding Angle:



C Range: 0 - 360DEG
C Interval: 22.5DEG
Test Speed: HIGH
Temperature: 25.3°C
Operators: Cloud
Test Date: 2024-10-15

γ Range: 0 - 180DEG
γ Interval: 1.0DEG
Test System: EVERFINE GO-2000B_V1 SYSTEM V2.00.488
Humidity: 65.0%
Test Distance: 6.360m [K=1.0000]
Remarks: RED

LED Avg.L Report

Test:U:24.00V I:0.1426A P:3.422W PF:1.000 Freq:0Hz Lamp Flux:71.7882x1 lm		
NAME: SF18-24V-5050-72-RGBW(3000K)-80	TYPE:	WEIGHT:
SPEC.:	DIM.: Length=1m	SERIAL No.:
MFR.:	SUR.:	Shielding Angle:

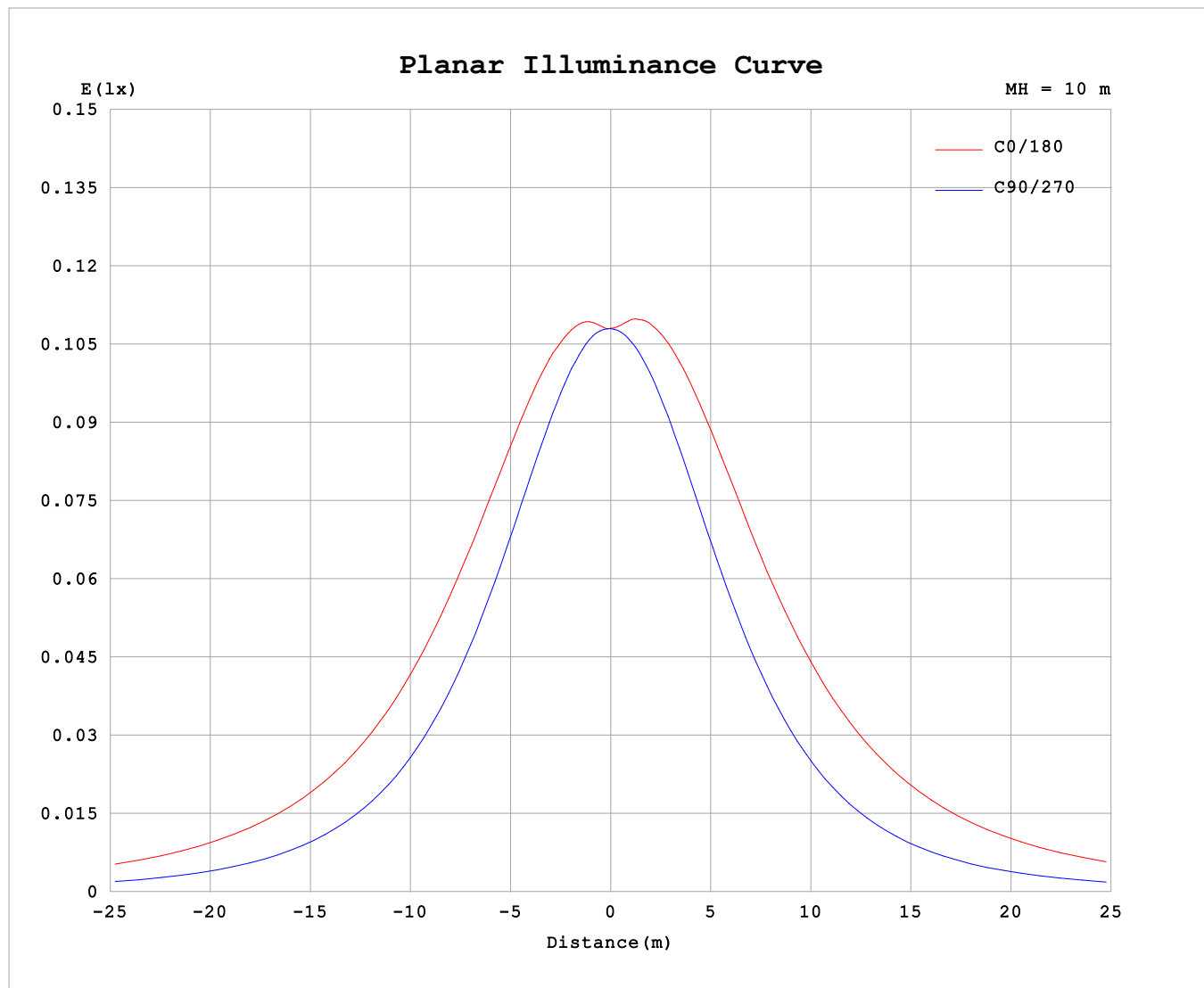
AvgL	cd/m2
L_0~180 (65) av	1515
L_0~180 (75) av	2224
L_0~180 (85) av	5698
L_90~270 (65) av	580
L_90~270 (75) av	591
L_90~270 (85) av	707
L_45 (65) av	1189
L_45 (75) av	1657
L_45 (85) av	3988

Standard: GB/T 29293-2012

C Range: 0 - 360DEG
C Interval: 22.5DEG
Test Speed: HIGH
Temperature:25.3℃
Operators:Cloud
Test Date:2024-10-15

γ Range: 0 - 180DEG
γ Interval: 1.0DEG
Test System:EVERFINE GO-2000B_V1 SYSTEM V2.00.488
Humidity:65.0%
Test Distance:6.360m [K=1.0000]
Remarks: RED

Planar Illuminance Curve



C Range: 0 - 360DEG
C Interval: 22.5DEG
Test Speed: HIGH
Temperature: 25.3°C
Operators: Cloud
Test Date: 2024-10-15

γ Range: 0 - 180DEG
 γ Interval: 1.0DEG
Test System: EVERFINE GO-2000B_V1 SYSTEM V2.00.488
Humidity: 65.0%
Test Distance: 6.360m [K=1.0000]
Remarks: RED

LUMINOUS DISTRIBUTION INTENSITY DATA

Test:U:24.00V I:0.1426A P:3.422W PF:1.000 Freq:0Hz Lamp Flux:71.7882x1 lm																	
NAME: SF18-24V-5050-72-RGBW(3000K)-80									TYPE:						WEIGHT:		
SPEC.:									DIM.: Length=1m						SERIAL No.:		
MFR.:									SUR.:						Shielding Angle:		

Table--1

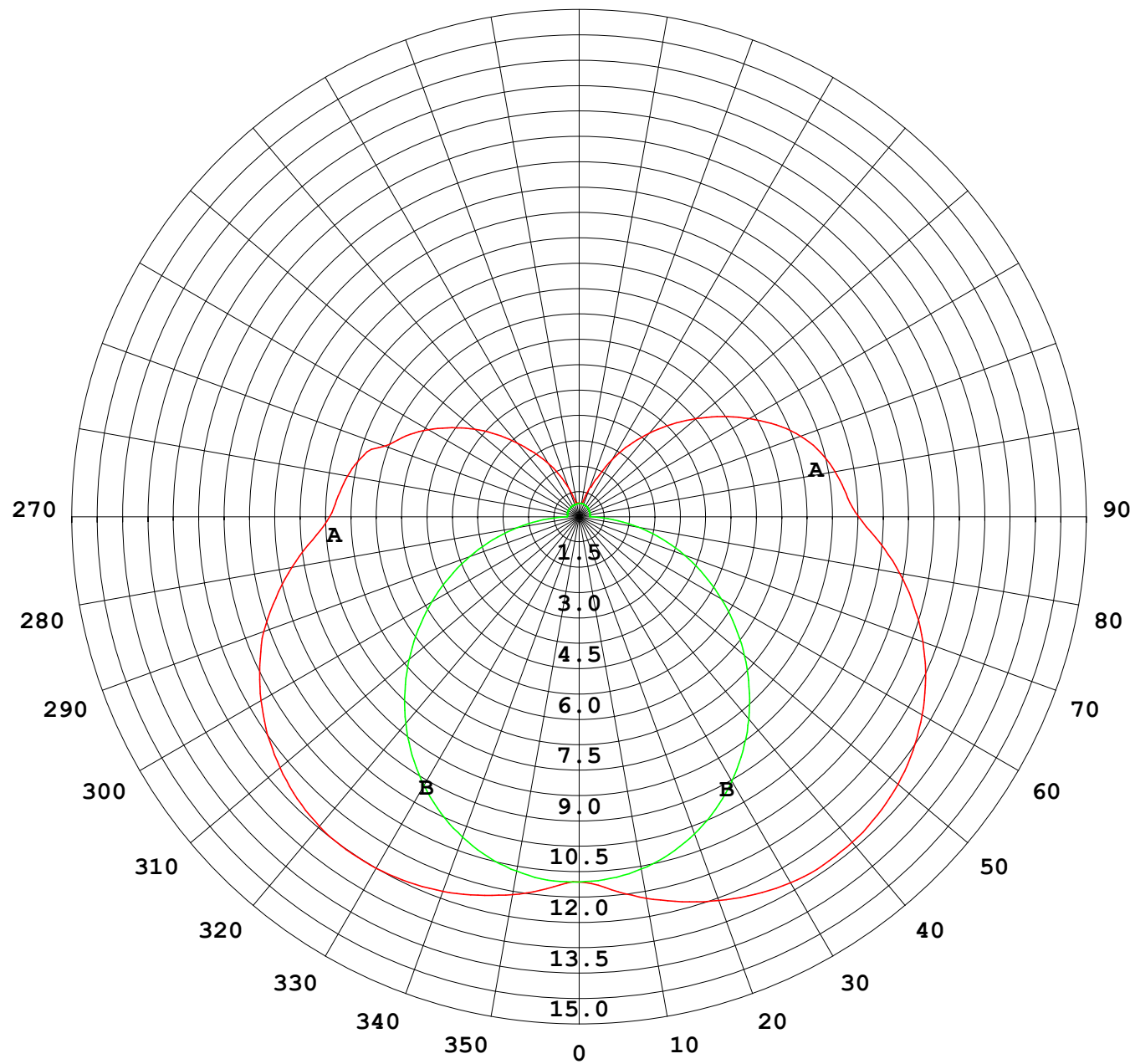
UNIT: cd

C (DEG) γ (DEG)		0	22.5	45	67.5	90	112.5	135	157.5	180	202.5	225	247.5	270	292.5	315	337.5			
0	10.8	10.8	10.8	10.8	10.8	10.8	10.8	10.8	10.8	10.8	10.8	10.8	10.8	10.8	10.8	10.8	10.8			
5	11.1	11.1	10.9	10.8	10.8	10.8	11.0	11.1	11.1	11.1	11.0	11.0	10.8	10.8	10.8	10.9	11.0			
10	11.4	11.3	11.1	10.8	10.7	10.8	11.2	11.4	11.5	11.4	11.2	10.8	10.6	10.8	11.1	11.3				
15	11.6	11.5	11.2	10.8	10.4	10.8	11.3	11.7	11.8	11.6	11.3	10.8	10.3	10.7	11.2	11.5				
20	11.8	11.7	11.2	10.6	10.1	10.7	11.4	11.9	12.1	11.9	11.3	10.6	10.00	10.5	11.2	11.6				
25	11.9	11.8	11.2	10.4	9.69	10.5	11.4	12.1	12.3	12.0	11.3	10.4	9.57	10.3	11.1	11.7				
30	12.0	11.8	11.1	10.0	9.19	10.1	11.4	12.2	12.5	12.2	11.2	10.1	9.05	9.89	10.9	11.7				
35	12.0	11.7	10.9	9.65	8.64	9.78	11.2	12.2	12.6	12.2	11.1	9.70	8.47	9.49	10.7	11.7				
40	12.0	11.6	10.6	9.19	7.99	9.34	11.0	12.2	12.6	12.1	10.9	9.25	7.82	9.00	10.4	11.5				
45	11.8	11.4	10.3	8.68	7.30	8.84	10.7	12.0	12.5	12.0	10.6	8.74	7.12	8.47	10.1	11.3				
50	11.6	11.1	9.88	8.12	6.58	8.30	10.4	11.8	12.3	11.8	10.2	8.21	6.40	7.90	9.69	11.0				
55	11.3	10.8	9.42	7.51	5.82	7.72	9.91	11.5	12.1	11.5	9.82	7.64	5.64	7.29	9.23	10.7				
60	10.9	10.3	8.89	6.87	5.04	7.09	9.42	11.1	11.7	11.1	9.35	7.02	4.87	6.67	8.73	10.3				
65	10.4	9.86	8.32	6.22	4.24	6.44	8.85	10.6	11.3	10.7	8.81	6.38	4.09	6.03	8.18	9.83				
70	9.95	9.34	7.71	5.51	3.45	5.75	8.24	10.1	10.8	10.2	8.23	5.72	3.32	5.36	7.56	9.27				
75	9.30	8.74	7.06	4.79	2.66	5.03	7.59	9.50	10.3	9.59	7.61	5.02	2.55	4.62	6.91	8.68				
80	8.64	8.05	6.38	4.06	1.86	4.28	6.90	8.85	9.64	8.95	6.95	4.31	1.77	3.91	6.24	8.01				
85	7.94	7.32	5.67	3.35	1.08	3.54	6.18	8.15	8.95	8.25	6.25	3.59	1.02	3.19	5.53	7.30				
90	7.39	6.75	5.06	2.71	0.37	2.87	5.53	7.48	8.28	7.60	5.61	2.97	0.33	2.61	4.97	6.75				
95	7.17	6.54	4.90	2.63	0.35	2.76	5.32	7.18	7.94	7.31	5.40	2.87	0.32	2.55	4.82	6.55				
100	6.97	6.36	4.75	2.21	0.35	2.62	5.17	6.97	7.70	7.09	5.24	2.70	0.32	1.38	4.68	6.39				
105	6.70	6.05	4.19	1.86	0.36	2.37	4.92	6.69	7.40	6.80	4.99	2.44	0.33	1.55	4.23	6.08				
110	6.13	5.45	3.84	1.68	0.37	2.11	4.54	6.30	6.98	6.40	4.61	2.17	0.33	1.46	3.35	5.56				
115	5.67	5.05	3.45	1.47	0.37	1.85	4.11	5.77	6.45	5.87	4.16	1.90	0.34	1.42	3.08	4.79				
120	5.17	4.57	3.11	1.29	0.37	1.59	3.68	5.21	5.82	5.28	3.71	1.62	0.35	1.28	2.89	4.11				
125	4.61	4.08	2.67	1.10	0.38	1.28	3.23	4.62	5.18	4.69	3.26	1.31	0.36	1.05	2.44	3.73				
130	4.04	3.57	2.18	0.90	0.38	1.03	2.78	4.03	4.53	4.08	2.79	1.05	0.36	0.85	1.98	3.40				
135	3.45	3.08	1.79	0.72	0.38	0.82	2.33	3.43	3.88	3.48	2.33	0.84	0.37	0.69	1.65	2.83				
140	2.86	2.55	1.40	0.57	0.38	0.62	1.86	2.85	3.24	2.89	1.86	0.65	0.38	0.56	1.35	2.34				
145	2.31	1.82	1.09	0.45	0.38	0.46	1.43	2.26	2.60	2.30	1.42	0.49	0.38	0.46	1.04	1.78				
150	1.82	1.32	0.84	0.40	0.38	0.40	1.05	1.66	1.95	1.70	1.04	0.40	0.38	0.40	0.79	1.35				
155	1.34	0.90	0.61	0.40	0.38	0.40	0.73	1.17	1.26	1.21	0.73	0.39	0.39	0.40	0.58	0.95				
160	0.90	0.61	0.45	0.40	0.39	0.41	0.47	0.76	0.88	0.79	0.46	0.39	0.40	0.40	0.44	0.65				
165	0.53	0.41	0.42	0.41	0.39	0.41	0.41	0.42	0.50	0.46	0.41	0.39	0.40	0.40	0.41	0.46				
170	0.41	0.41	0.41	0.41	0.39	0.41	0.41	0.41	0.40	0.41	0.41	0.39	0.40	0.40	0.41	0.43				
175	0.41	0.41	0.41	0.41	0.40	0.41	0.41	0.41	0.40	0.41	0.41	0.40	0.40	0.40	0.41	0.43				
180	0.41	0.41	0.41	0.41	0.40	0.41	0.41	0.41	0.40	0.41	0.41	0.40	0.40	0.40	0.41	0.43				

C Range: 0 - 360DEG
C Interval: 22.5DEG
Test Speed: HIGH
Temperature:25.3℃
Operators:Cloud
Test Date:2024-10-15

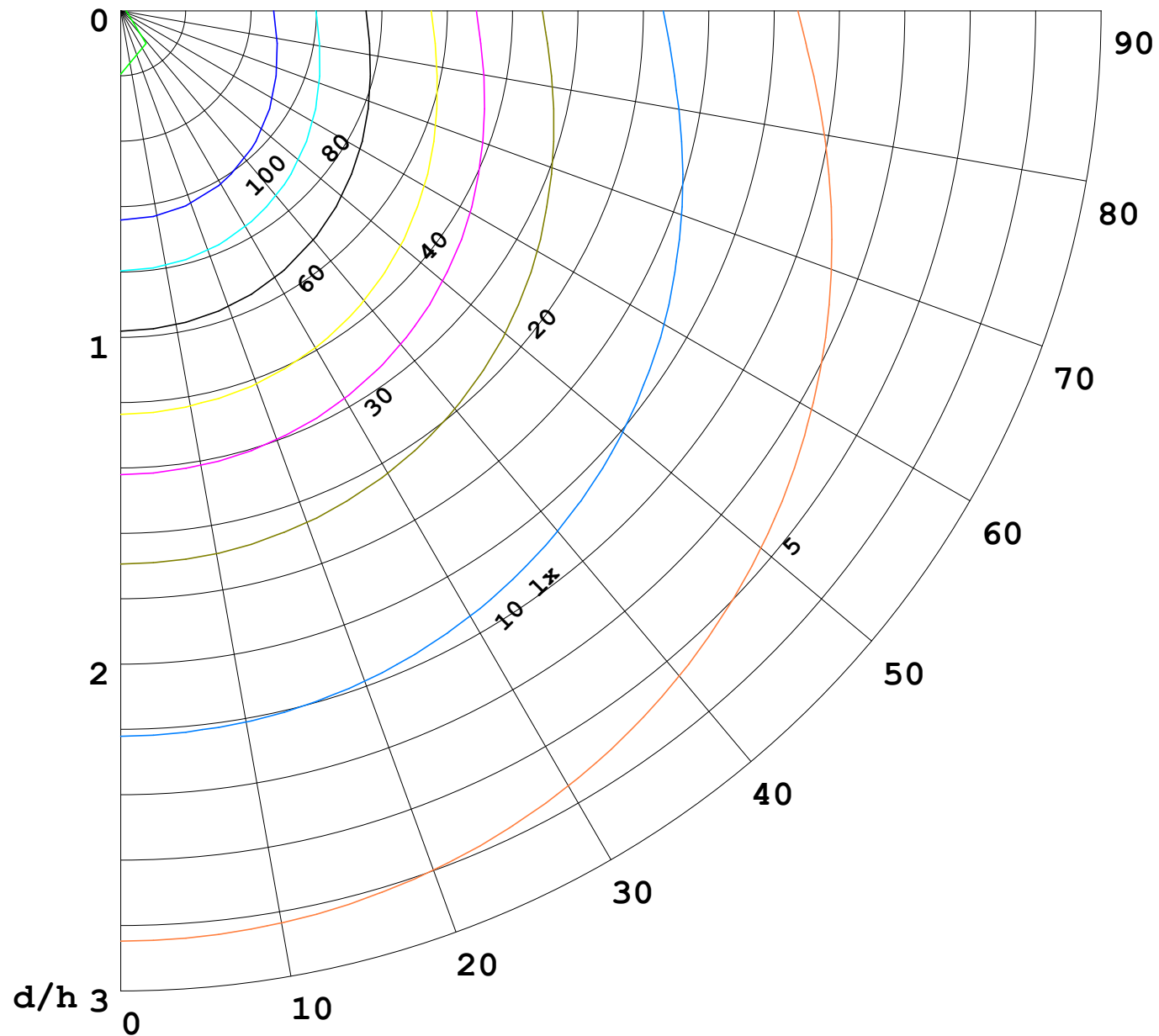
γ Range: 0 - 180DEG
γ Interval: 1.0DEG
Test System:EVERFINE GO-2000B_V1 SYSTEM V2.00.488
Humidity:65.0%
Test Distance:6.360m [K=1.0000]
Remarks: RED

I (cd)



1000 lm

$\kappa = 1$



F = 1000 lm
 K = 0.7
 Hcc = 0.8 m
 Hfc = 0.0 m
 Eave = 100 lx

	Pcc	Pw	Pfc
————	70	50	30
————	50	30	20

