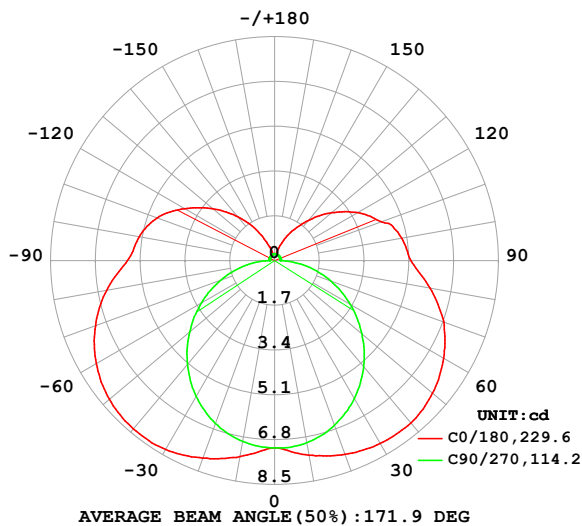


LUMINAIRE PHOTOMETRIC TEST REPORT

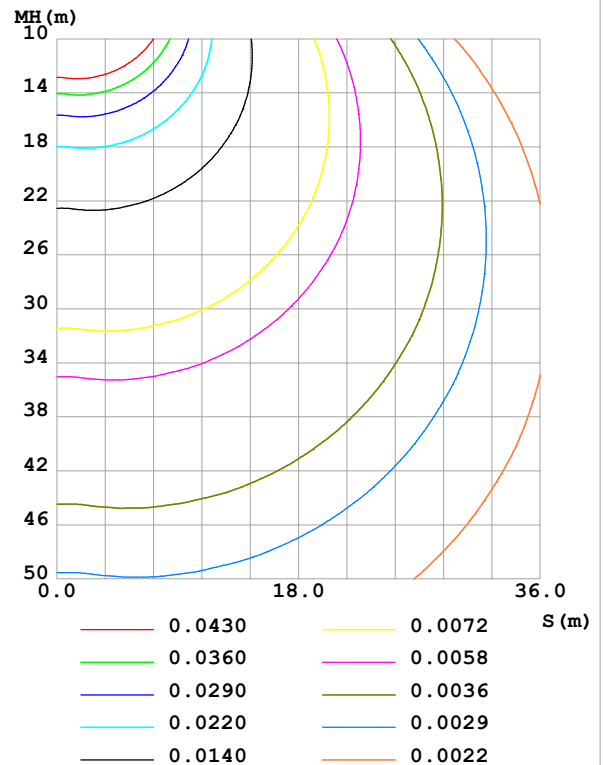
| | | |
|--|-----------------|------------------|
| Test:U:24.00V I:0.1753A P:4.207W PF:1.000 Freq:0Hz Lamp Flux:48.2606x1 lm | | |
| NAME: SF18-24V-5050-72-RGBW(3000K)-80 | TYPE: | WEIGHT: |
| SPEC.: | DIM.: Length=1m | SERIAL No.: |
| MFR.: | SUR.: | Shielding Angle: |

| DATA OF LAMP | | PHOTOMETRIC DATA Eff: 11.47 lm/W | | | |
|------------------|---------|----------------------------------|---------|-------------------|-----------|
| MODEL | | I _{max} (cd) | 8.340 | S/MH(C0/180) | 1.75 |
| NOMINAL POWER(W) | | LOR(%) | 100.0 | S/MH(C90/270) | 1.25 |
| RATED VOLTAGE(V) | | TOTAL FLUX(lm) | 48.261 | η UP,DN(C0-180) | 13.0,37.0 |
| NOMINAL FLUX(lm) | 48.2606 | CIE CLASS | SEMI-D. | η UP,DN(C180-360) | 13.0,37.0 |
| LAMPS INSIDE | 1 | η up (%) | 26.0 | CIBSE SHR NOM | 1.50 |
| TEST VOLTAGE(V) | | η down (%) | 74.0 | CIBSE SHR MAX | 1.55 |

LUMINOUS INTENSITY DISTRIBUTION DIAGRAM



C0 PLANE ISOLUX DIAGRAM (UNIT:lx)



C Range: 0 - 360DEG
C Interval: 22.5DEG
Test Speed: HIGH
Temperature: 25.3 °C
Operators: Cloud
Test Date: 2024-10-15

γ Range: 0 - 180DEG
γ Interval: 1.0DEG
Test System: EVERFINE GO-2000B_V1 SYSTEM V2.00.488
Humidity: 65.0%
Test Distance: 6.360m [K=1.0000]
Remarks: BLUE

ZONAL FLUX DIAGRAM

ZONAL FLUX DIAGRAM:

| γ | C0 | C45 | C90 | C135 | C180 | C225 | C270 | C315 | γ | Φ zone | Φ total | %lum, lamp |
|----------|-----------------------|--------|--------|--------|--------|--------|--------|--------|----------|-------------|--------------|------------|
| 10 | 7.497 | 7.318 | 7.021 | 7.335 | 7.556 | 7.336 | 6.972 | 7.313 | 0- 10 | 0.6896 | 0.6896 | 1.43,1.43 |
| 20 | 7.826 | 7.411 | 6.651 | 7.486 | 7.980 | 7.457 | 6.583 | 7.353 | 10- 20 | 2.083 | 2.773 | 5.75,5.75 |
| 30 | 8.017 | 7.348 | 6.052 | 7.474 | 8.277 | 7.411 | 5.957 | 7.243 | 20- 30 | 3.388 | 6.161 | 12.8,12.8 |
| 40 | 8.049 | 7.080 | 5.264 | 7.264 | 8.340 | 7.185 | 5.155 | 6.946 | 30- 40 | 4.465 | 10.63 | 22,22 |
| 50 | 7.830 | 6.636 | 4.329 | 6.841 | 8.190 | 6.779 | 4.207 | 6.505 | 40- 50 | 5.201 | 15.83 | 32.8,32.8 |
| 60 | 7.412 | 6.004 | 3.317 | 6.255 | 7.817 | 6.193 | 3.205 | 5.887 | 50- 60 | 5.521 | 21.35 | 44.2,44.2 |
| 70 | 6.837 | 5.258 | 2.266 | 5.488 | 7.234 | 5.475 | 2.177 | 5.138 | 60- 70 | 5.414 | 26.76 | 55.5,55.5 |
| 80 | 5.986 | 4.398 | 1.226 | 4.623 | 6.466 | 4.639 | 1.160 | 4.293 | 70- 80 | 4.900 | 31.66 | 65.6,65.6 |
| 90 | 5.178 | 3.542 | 0.2383 | 3.735 | 5.586 | 3.774 | 0.2056 | 3.463 | 80- 90 | 4.066 | 35.73 | 74,74 |
| 100 | 4.903 | 3.331 | 0.2259 | 3.501 | 5.220 | 3.538 | 0.2057 | 3.278 | 90-100 | 3.482 | 39.21 | 81.2,81.2 |
| 110 | 4.324 | 2.685 | 0.2317 | 3.078 | 4.744 | 3.108 | 0.2144 | 2.407 | 100-110 | 3.029 | 42.24 | 87.5,87.5 |
| 120 | 3.651 | 2.166 | 0.2346 | 2.483 | 3.947 | 2.494 | 0.2230 | 2.029 | 110-120 | 2.372 | 44.61 | 92.4,92.4 |
| 130 | 2.838 | 1.509 | 0.2375 | 1.872 | 3.067 | 1.871 | 0.2289 | 1.378 | 120-130 | 1.693 | 46.30 | 95.9,95.9 |
| 140 | 1.992 | 0.9607 | 0.2375 | 1.238 | 2.175 | 1.233 | 0.2404 | 0.9222 | 130-140 | 1.061 | 47.36 | 98.1,98.1 |
| 150 | 1.250 | 0.5626 | 0.2433 | 0.6926 | 1.292 | 0.6799 | 0.2462 | 0.5186 | 140-150 | 0.5549 | 47.92 | 99.3,99.3 |
| 160 | 0.5980 | 0.3000 | 0.2433 | 0.3089 | 0.5593 | 0.2852 | 0.2520 | 0.2795 | 150-160 | 0.2333 | 48.15 | 99.8,99.8 |
| 170 | 0.2684 | 0.2682 | 0.2462 | 0.2653 | 0.2626 | 0.2653 | 0.2520 | 0.2624 | 160-170 | 0.0825 | 48.24 | 99.9,99.9 |
| 180 | 0.2655 | 0.2653 | 0.2520 | 0.2653 | 0.2626 | 0.2653 | 0.2520 | 0.2624 | 170-180 | 0.0249 | 48.26 | 100,100 |
| DEG | LUMINOUS INTENSITY:cd | | | | | | | | | UNIT:lm | | |

Conical surface Flux(90deg): 13.16 lm

%lum = 27.3%

%lamp = 27.3%

Conical surface Flux(130deg): 24.095 lm

%lum = 49.9%

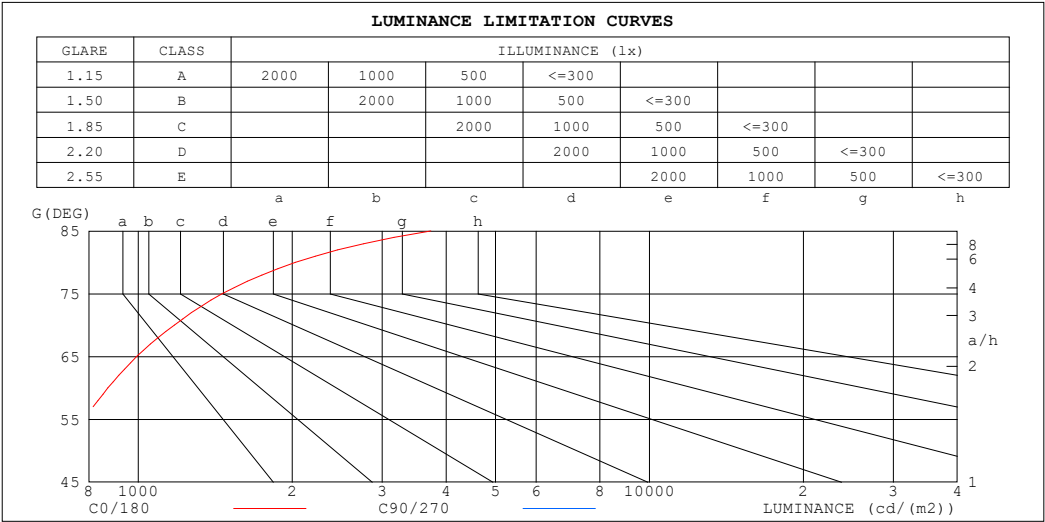
%lamp = 49.9%

C Range: 0 - 360DEG
 C Interval: 22.5DEG
 Test Speed: HIGH
 Temperature:25.3℃
 Operators:Cloud
 Test Date:2024-10-15

γ Range: 0 - 180DEG
 γ Interval: 1.0DEG
 Test System:EVERFINE GO-2000B_V1 SYSTEM V2.00.488
 Humidity:65.0%
 Test Distance:6.360m [K=1.0000]
 Remarks: BLUE

LUMINANCE LIMITATION CURVES

| | | |
|--|-----------------|------------------|
| Test:U:24.00V I:0.1753A P:4.207W PF:1.000 Freq:0Hz Lamp Flux:48.2606x1 lm | | |
| NAME: SF18-24V-5050-72-RGBW(3000K)-80 | TYPE: | WEIGHT: |
| SPEC.: | DIM.: Length=1m | SERIAL No.: |
| MFR.: | SUR.: | Shielding Angle: |



| LUMINANCE cd/(m2) | | |
|-------------------|--------|---------|
| G (DEG) | C0/180 | C90/270 |
| 85 | 3735 | 482 |
| 80 | 2028 | 414 |
| 75 | 1459 | 395 |
| 70 | 1176 | 388 |
| 65 | 993 | 387 |
| 60 | 872 | 389 |
| 55 | 784 | 392 |
| 50 | 717 | 395 |
| 45 | 663 | 399 |

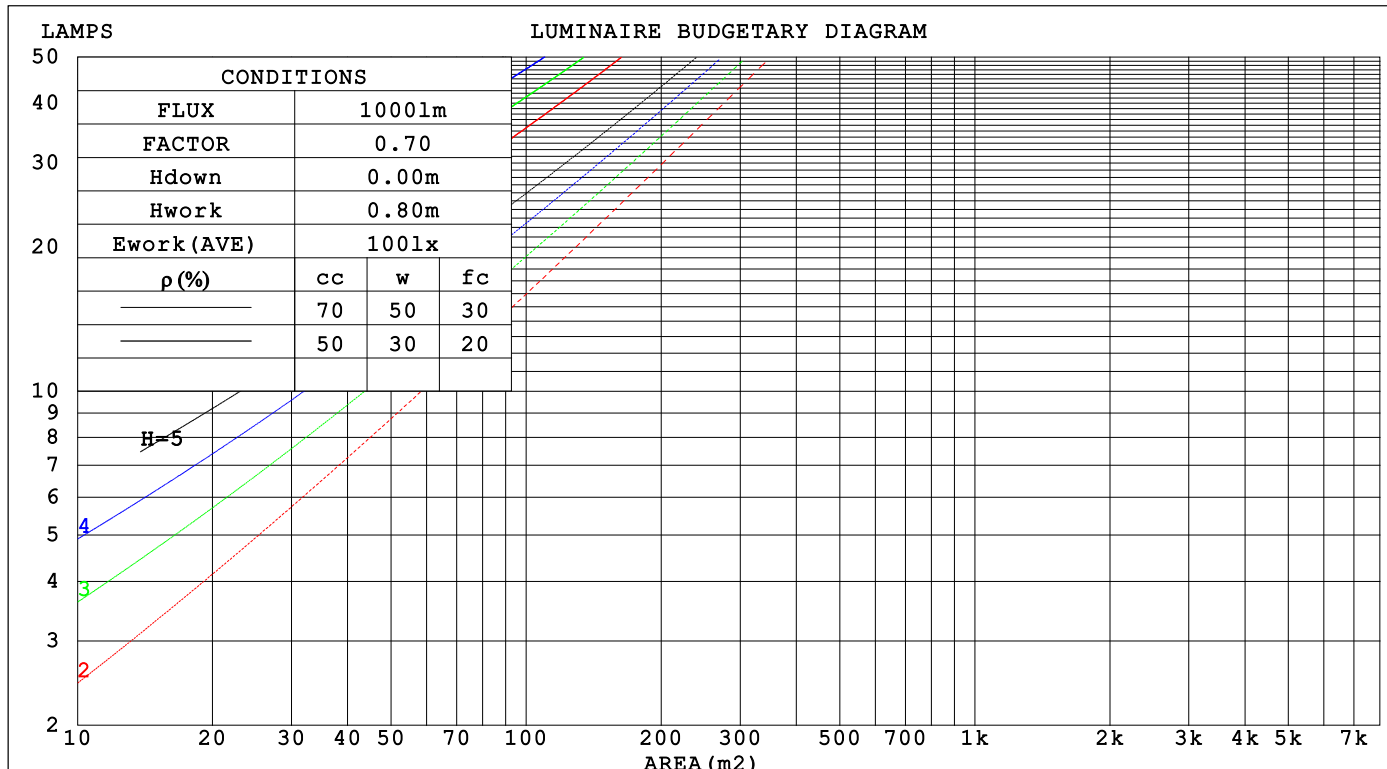
C Range: 0 - 360DEG
C Interval: 22.5DEG
Test Speed: HIGH
Temperature:25.3℃
Operators:Cloud
Test Date:2024-10-15

γ Range: 0 - 180DEG
γ Interval: 1.0DEG
Test System:EVERFINE GO-2000B_V1 SYSTEM V2.00.488
Humidity:65.0%
Test Distance:6.360m [K=1.0000]
Remarks: BLUE

CU AND LUMINAIRE BUDGETARY ESTIMATE DIAGRAM

| | | |
|--|-----------------|------------------|
| Test:U:24.00V I:0.1753A P:4.207W PF:1.000 Freq:0Hz Lamp Flux:48.2606x1 lm | | |
| NAME: SF18-24V-5050-72-RGBW(3000K)-80 | TYPE: | WEIGHT: |
| SPEC.: | DIM.: Length=1m | SERIAL No.: |
| MFR.: | SUR.: | Shielding Angle: |

| pcc | 80% | | | 70% | | | 50% | | | 30% | | | 10% | | | 0 | | | | | | | | | | | | | | |
|-----------------|-----------------------|------|------|------|------|------|-----|-----|-----|-----|-----|-----|-----|-----|-----|---------------------------------|--|--|--|--|--|--|--|--|--|--|--|--|--|--|
| p _w | 50% | 30% | 10% | 50% | 30% | 10% | 50% | 30% | 10% | 50% | 30% | 10% | 50% | 30% | 10% | 0 | | | | | | | | | | | | | | |
| p _{fc} | 20% | | | 20% | | | 20% | | | 20% | | | 20% | | | 0 | | | | | | | | | | | | | | |
| RCR | RCR:Room Cavity Ratio | | | | | | | | | | | | | | | Coefficients of Utilization(CU) | | | | | | | | | | | | | | |
| 0.0 | 1.13 | 1.13 | 1.13 | 1.07 | 1.07 | 1.07 | .97 | .97 | .97 | .87 | .87 | .87 | .78 | .78 | .78 | .74 | | | | | | | | | | | | | | |
| 1.0 | .93 | .87 | .82 | .88 | .83 | .78 | .79 | .75 | .71 | .70 | .67 | .64 | .63 | .60 | .58 | .54 | | | | | | | | | | | | | | |
| 2.0 | .79 | .71 | .64 | .75 | .67 | .61 | .67 | .61 | .56 | .59 | .55 | .51 | .53 | .49 | .46 | .42 | | | | | | | | | | | | | | |
| 3.0 | .68 | .59 | .51 | .64 | .56 | .49 | .58 | .51 | .45 | .51 | .46 | .41 | .45 | .41 | .37 | .34 | | | | | | | | | | | | | | |
| 4.0 | .59 | .50 | .42 | .56 | .47 | .41 | .50 | .43 | .37 | .45 | .39 | .34 | .40 | .35 | .31 | .28 | | | | | | | | | | | | | | |
| 5.0 | .52 | .43 | .36 | .50 | .41 | .34 | .45 | .37 | .31 | .40 | .34 | .29 | .35 | .30 | .26 | .23 | | | | | | | | | | | | | | |
| 6.0 | .47 | .37 | .31 | .44 | .36 | .29 | .40 | .33 | .27 | .36 | .30 | .25 | .32 | .27 | .23 | .20 | | | | | | | | | | | | | | |
| 7.0 | .42 | .33 | .26 | .40 | .31 | .25 | .36 | .29 | .23 | .32 | .26 | .22 | .29 | .24 | .20 | .17 | | | | | | | | | | | | | | |
| 8.0 | .38 | .29 | .23 | .36 | .28 | .22 | .33 | .26 | .21 | .29 | .23 | .19 | .26 | .21 | .17 | .15 | | | | | | | | | | | | | | |
| 9.0 | .35 | .26 | .21 | .33 | .25 | .20 | .30 | .23 | .18 | .27 | .21 | .17 | .24 | .19 | .15 | .13 | | | | | | | | | | | | | | |
| 10.0 | .32 | .24 | .18 | .30 | .23 | .18 | .28 | .21 | .16 | .25 | .19 | .15 | .22 | .18 | .14 | .12 | | | | | | | | | | | | | | |



C Range: 0 - 360DEG
C Interval: 22.5DEG
Test Speed: HIGH
Temperature: 25.3℃
Operators: Cloud
Test Date: 2024-10-15

```

γ Range: 0 - 180DEG
γ Interval: 1.0DEG
Test System:EVERFINE GO-2000B_V1 SYSTEM V2.00.488
Humidity:65.0%
Test Distance:6.360m [K=1.0000]
Remarks: BLUE

```

WEC AND CCEC

| | | |
|--|-----------------|------------------|
| Test:U:24.00V I:0.1753A P:4.207W PF:1.000 Freq:0Hz Lamp Flux:48.2606x1 lm | | |
| NAME: SF18-24V-5050-72-RGBW(3000K)-80 | TYPE: | WEIGHT: |
| SPEC.: | DIM.: Length=1m | SERIAL No.: |
| MFR.: | SUR.: | Shielding Angle: |

| | | | | | | | | | | | | | | | | | | | | | | | | | | | | | | |
|------|-----------------------|------|------|------|------|------|------|------|------|------|------|------|------|------|------|---------------------------------|--|--|--|--|--|--|--|--|--|--|--|--|--|--|
| pcc | 80% | | | 70% | | | 50% | | | 30% | | | 10% | | | 0 | | | | | | | | | | | | | | |
| pw | 50% | 30% | 10% | 50% | 30% | 10% | 50% | 30% | 10% | 50% | 30% | 10% | 50% | 30% | 10% | 0 | | | | | | | | | | | | | | |
| pfc | 20% | | | 20% | | | 20% | | | 20% | | | 20% | | | 0 | | | | | | | | | | | | | | |
| RCR | RCR:Room Cavity Ratio | | | | | | | | | | | | | | | Wall Exitance Coefficients(WEC) | | | | | | | | | | | | | | |
| 0.0 | | | | | | | | | | | | | | | | | | | | | | | | | | | | | | |
| 1.0 | .402 | .229 | .072 | .387 | .221 | .070 | .359 | .206 | .066 | .332 | .192 | .062 | .308 | .179 | .058 | | | | | | | | | | | | | | | |
| 2.0 | .344 | .188 | .058 | .330 | .182 | .056 | .304 | .169 | .053 | .280 | .157 | .049 | .258 | .146 | .046 | | | | | | | | | | | | | | | |
| 3.0 | .303 | .161 | .048 | .290 | .156 | .047 | .267 | .145 | .044 | .245 | .134 | .041 | .225 | .125 | .039 | | | | | | | | | | | | | | | |
| 4.0 | .271 | .141 | .041 | .260 | .136 | .040 | .239 | .127 | .038 | .219 | .117 | .035 | .200 | .109 | .033 | | | | | | | | | | | | | | | |
| 5.0 | .246 | .125 | .036 | .235 | .121 | .035 | .216 | .112 | .033 | .198 | .104 | .031 | .181 | .097 | .029 | | | | | | | | | | | | | | | |
| 6.0 | .224 | .112 | .032 | .215 | .109 | .031 | .197 | .101 | .029 | .180 | .094 | .028 | .165 | .087 | .026 | | | | | | | | | | | | | | | |
| 7.0 | .206 | .102 | .029 | .198 | .099 | .028 | .181 | .092 | .026 | .166 | .085 | .025 | .152 | .079 | .023 | | | | | | | | | | | | | | | |
| 8.0 | .191 | .093 | .026 | .183 | .090 | .025 | .168 | .084 | .024 | .154 | .078 | .022 | .140 | .072 | .021 | | | | | | | | | | | | | | | |
| 9.0 | .178 | .086 | .024 | .170 | .083 | .023 | .157 | .077 | .022 | .143 | .072 | .021 | .131 | .066 | .019 | | | | | | | | | | | | | | | |
| 10.0 | .166 | .080 | .022 | .159 | .077 | .021 | .146 | .072 | .020 | .134 | .067 | .019 | .123 | .062 | .018 | | | | | | | | | | | | | | | |

| pcc | 80% | | | 70% | | | 50% | | | 30% | | | 10% | | | 0 |
|------|-----------------------|------|------|------|------|------|---|------|------|------|------|------|------|------|------|---|
| pw | 50% | 30% | 10% | 50% | 30% | 10% | 50% | 30% | 10% | 50% | 30% | 10% | 50% | 30% | 10% | 0 |
| pfc | 20% | | | 20% | | | 20% | | | 20% | | | 20% | | | 0 |
| RCR | RCR:Room Cavity Ratio | | | | | | Ceiling Cavity Exitance Coefficients (CCEC) | | | | | | | | | |
| 0.0 | .388 | .388 | .388 | .332 | .332 | .332 | .227 | .227 | .227 | .130 | .130 | .130 | .042 | .042 | .042 | |
| 1.0 | .386 | .355 | .327 | .330 | .305 | .281 | .226 | .209 | .194 | .130 | .121 | .113 | .042 | .039 | .037 | |
| 2.0 | .380 | .332 | .293 | .325 | .286 | .253 | .223 | .198 | .176 | .129 | .115 | .103 | .041 | .037 | .034 | |
| 3.0 | .373 | .316 | .272 | .320 | .273 | .235 | .219 | .190 | .165 | .127 | .111 | .097 | .041 | .036 | .032 | |
| 4.0 | .365 | .304 | .258 | .313 | .263 | .224 | .215 | .183 | .158 | .125 | .107 | .093 | .040 | .035 | .031 | |
| 5.0 | .357 | .295 | .248 | .307 | .255 | .216 | .211 | .178 | .153 | .122 | .105 | .091 | .039 | .034 | .030 | |
| 6.0 | .350 | .287 | .242 | .301 | .249 | .210 | .208 | .174 | .149 | .120 | .102 | .089 | .039 | .033 | .029 | |
| 7.0 | .343 | .280 | .237 | .295 | .243 | .206 | .204 | .170 | .146 | .118 | .100 | .087 | .038 | .033 | .029 | |
| 8.0 | .336 | .275 | .233 | .289 | .239 | .203 | .200 | .167 | .144 | .117 | .099 | .086 | .038 | .032 | .028 | |
| 9.0 | .330 | .270 | .230 | .284 | .235 | .201 | .197 | .165 | .143 | .115 | .097 | .085 | .037 | .032 | .028 | |
| 10.0 | .324 | .266 | .228 | .279 | .231 | .199 | .194 | .163 | .141 | .113 | .096 | .084 | .037 | .032 | .028 | |

C Range: 0 - 360DEG
C Interval: 22.5DEG
Test Speed: HIGH
Temperature:25.3℃
Operators:Cloud
Test Date:2024-10-15

γ Range: 0 - 180DEG
γ Interval: 1.0DEG
Test System:EVERFINE GO-2000B_V1 SYSTEM V2.00.488
Humidity:65.0%
Test Distance:6.360m [K=1.0000]
Remarks: BLUE

UGR(Unified Glare Rating) Table

| | | | | | | | | | | |
|--|------------------|------|------|------|-----------------|----------------|------|------------------|------|------|
| Test:U:24.00V I:0.1753A P:4.207W PF:1.000 Freq:0Hz Lamp Flux:48.2606x1 lm | | | | | | | | | | |
| NAME: SF18-24V-5050-72-RGBW(3000K)-80 | | | | | TYPE: | | | WEIGHT: | | |
| SPEC.: | | | | | DIM.: Length=1m | | | SERIAL No.: | | |
| MFR.: | | | | | SUR.: | | | Shielding Angle: | | |
| ceiling/cavity | 0.7 | 0.7 | 0.5 | 0.5 | 0.3 | 0.7 | 0.7 | 0.5 | 0.5 | 0.3 |
| walls | 0.5 | 0.3 | 0.5 | 0.3 | 0.3 | 0.5 | 0.3 | 0.5 | 0.3 | 0.3 |
| working plane | 0.2 | 0.2 | 0.2 | 0.2 | 0.2 | 0.2 | 0.2 | 0.2 | 0.2 | 0.2 |
| Room dimensions | Viewed crosswise | | | | | Viewed endwise | | | | |
| x = 2H y = 2H | 21.6 | 22.9 | 22.2 | 23.5 | 24.2 | 18.6 | 19.9 | 19.2 | 20.5 | 21.2 |
| 3H | 24.5 | 25.7 | 25.1 | 26.4 | 27.1 | 20.3 | 21.5 | 20.9 | 22.1 | 22.9 |
| 4H | 26.1 | 27.2 | 26.7 | 27.9 | 28.7 | 21.1 | 22.2 | 21.7 | 22.9 | 23.7 |
| 6H | 27.8 | 28.9 | 28.5 | 29.6 | 30.4 | 21.7 | 22.8 | 22.4 | 23.5 | 24.3 |
| 8H | 28.8 | 29.8 | 29.5 | 30.5 | 31.3 | 22.0 | 23.0 | 22.7 | 23.7 | 24.6 |
| 12H | 29.9 | 30.9 | 30.5 | 31.6 | 32.4 | 22.2 | 23.2 | 22.9 | 23.9 | 24.8 |
| 4H 2H | 22.1 | 23.3 | 22.8 | 24.0 | 24.7 | 20.1 | 21.2 | 20.7 | 21.9 | 22.7 |
| 3H | 25.3 | 26.3 | 26.0 | 27.0 | 27.9 | 22.1 | 23.1 | 22.8 | 23.8 | 24.6 |
| 4H | 27.1 | 28.0 | 27.8 | 28.7 | 29.6 | 23.1 | 24.0 | 23.8 | 24.7 | 25.6 |
| 6H | 29.0 | 29.9 | 29.8 | 30.6 | 31.5 | 23.9 | 24.8 | 24.7 | 25.5 | 26.4 |
| 8H | 30.1 | 30.9 | 30.9 | 31.7 | 32.6 | 24.3 | 25.1 | 25.1 | 25.8 | 26.7 |
| 12H | 31.3 | 32.1 | 32.1 | 32.8 | 33.8 | 24.6 | 25.3 | 25.4 | 26.1 | 27.0 |
| 8H 4H | 27.5 | 28.2 | 28.2 | 29.0 | 29.9 | 24.4 | 25.2 | 25.1 | 25.9 | 26.8 |
| 6H | 29.7 | 30.4 | 30.5 | 31.2 | 32.1 | 25.7 | 26.3 | 26.4 | 27.1 | 28.0 |
| 8H | 31.0 | 31.6 | 31.8 | 32.4 | 33.4 | 26.2 | 26.8 | 27.0 | 27.6 | 28.6 |
| 12H | 32.5 | 33.0 | 33.3 | 33.8 | 34.8 | 26.8 | 27.3 | 27.6 | 28.1 | 29.1 |
| 12H 4H | 27.5 | 28.2 | 28.2 | 29.0 | 29.9 | 24.8 | 25.5 | 25.6 | 26.3 | 27.2 |
| 6H | 29.8 | 30.4 | 30.6 | 31.2 | 32.2 | 26.3 | 26.9 | 27.1 | 27.7 | 28.7 |
| 8H | 31.2 | 31.8 | 32.1 | 32.6 | 33.6 | 27.1 | 27.6 | 27.9 | 28.4 | 29.4 |
| Variations with the observer position at spacings(CIE Pub.117): | | | | | | | | | | |
| S = 1.0H | + 0.1 / - 0.1 | | | | | + 0.1 / - 0.1 | | | | |
| 1.5H | + 0.2 / - 0.3 | | | | | + 0.2 / - 0.3 | | | | |
| 2.0H | + 0.3 / - 0.4 | | | | | + 0.3 / - 0.5 | | | | |

CIE Pub.117, 48.26 lm Total Lamp Luminous Flux Correct (8log(F/F0) = -10.5)
Area: 0.017 m2

C Range: 0 - 360DEG
C Interval: 22.5DEG
Test Speed: HIGH
Temperature:25.3℃
Operators:Cloud
Test Date:2024-10-15

γ Range: 0 - 180DEG
γ Interval: 1.0DEG
Test System:EVERFINE GO-2000B_V1 SYSTEM V2.00.488
Humidity:65.0%
Test Distance:6.360m [K=1.0000]
Remarks: BLUE

UTILIZATION FACTORS TABLE

| | | |
|--|-----------------|------------------|
| Test:U:24.00V I:0.1753A P:4.207W PF:1.000 Freq:0Hz Lamp Flux:48.2606x1 lm | | |
| NAME: SF18-24V-5050-72-RGBW(3000K)-80 | TYPE: | WEIGHT: |
| SPEC.: | DIM.: Length=1m | SERIAL No.: |
| MFR.: | SUR.: | Shielding Angle: |

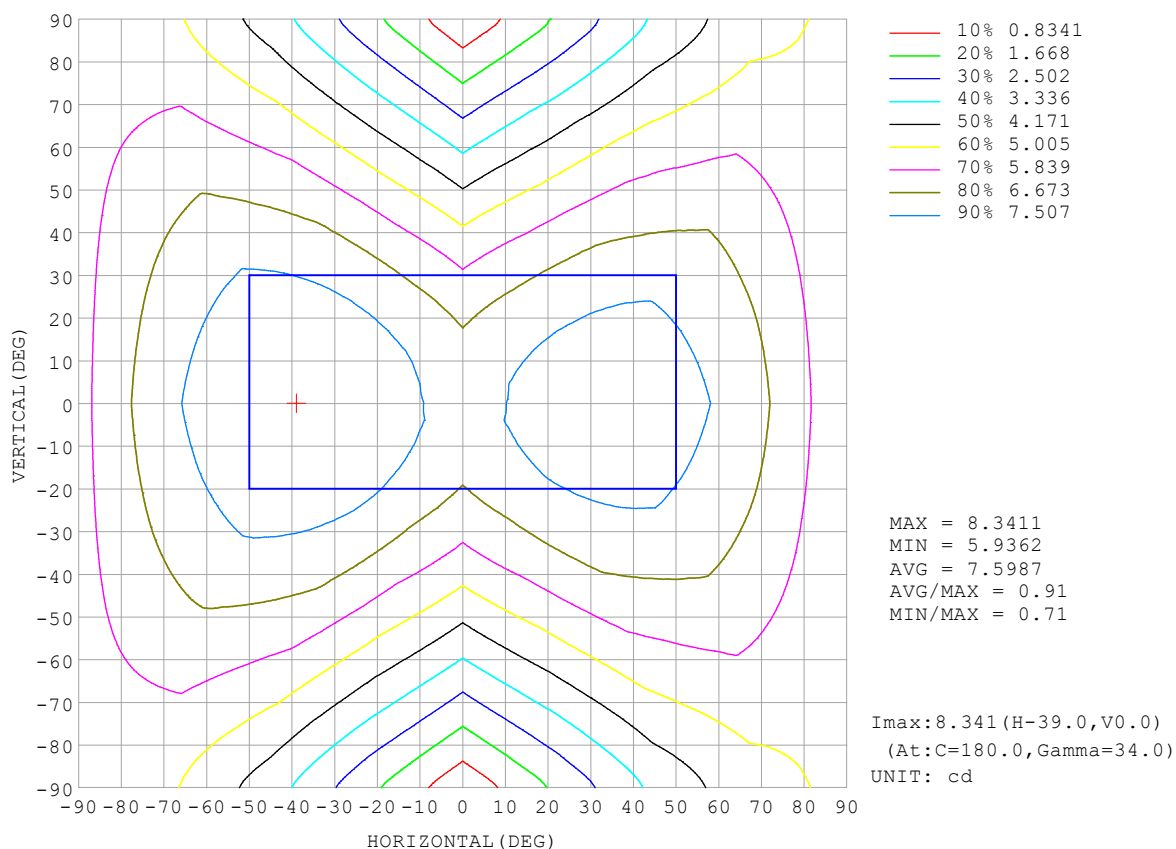
| REFLECTANCE | | | | | | | | | | |
|----------------------------------|--|-----|-----------|-----|-----|-----|-----|---------------|-----|--------|
| Ceiling | 0.8 | 0.8 | 0.8 | 0.7 | 0.7 | 0.7 | 0.5 | 0.5 | 0.5 | 0 |
| Walls | 0.7 | 0.5 | 0.3 | 0.7 | 0.5 | 0.3 | 0.7 | 0.5 | 0.3 | 0 |
| Working plane | 0.2 | 0.2 | 0.2 | 0.2 | 0.2 | 0.2 | 0.2 | 0.2 | 0.2 | 0 |
| ROOM INDEX | UTILIZATION FACTORS (PERCENT) $k(RI) \times RCR = 5$ | | | | | | | | | |
| $k = 0.60$ | 44 | 31 | 24 | 42 | 30 | 23 | 40 | 29 | 23 | 16 |
| 0.80 | 53 | 39 | 31 | 51 | 38 | 30 | 47 | 36 | 29 | 21 |
| 1.00 | 60 | 47 | 38 | 58 | 45 | 37 | 54 | 45 | 36 | 26 |
| 1.25 | 67 | 54 | 45 | 64 | 52 | 44 | 59 | 49 | 42 | 31 |
| 1.50 | 72 | 59 | 50 | 69 | 57 | 49 | 63 | 54 | 46 | 35 |
| 2.00 | 80 | 68 | 59 | 76 | 65 | 57 | 70 | 61 | 54 | 41 |
| 2.50 | 85 | 74 | 65 | 81 | 71 | 63 | 73 | 65 | 59 | 44 |
| 3.00 | 89 | 78 | 70 | 84 | 75 | 68 | 76 | 69 | 63 | 48 |
| 4.00 | 94 | 85 | 78 | 89 | 81 | 75 | 80 | 74 | 69 | 52 |
| 5.00 | 97 | 89 | 83 | 92 | 85 | 79 | 83 | 78 | 73 | 55 |
| ROOM INDEX | UF(total) | | | | | | | | | Direct |
| According to DIN EN 13032-2 2004 | | | Suspended | | | | | SHRNOM = 1.25 | | |

C Range: 0 - 360DEG
 C Interval: 22.5DEG
 Test Speed: HIGH
 Temperature: 25.3°C
 Operators: Cloud
 Test Date: 2024-10-15

γ Range: 0 - 180DEG
 γ Interval: 1.0DEG
 Test System: EVERFINE GO-2000B_V1 SYSTEM V2.00.488
 Humidity: 65.0%
 Test Distance: 6.360m [K=1.0000]
 Remarks: BLUE

ISOCANDELA DIAGRAM

| | | |
|--|-----------------|------------------|
| Test:U:24.00V I:0.1753A P:4.207W PF:1.000 Freq:0Hz Lamp Flux:48.2606x1 lm | | |
| NAME: SF18-24V-5050-72-RGBW(3000K)-80 | TYPE: | WEIGHT: |
| SPEC.: | DIM.: Length=1m | SERIAL No.: |
| MFR.: | SUR.: | Shielding Angle: |

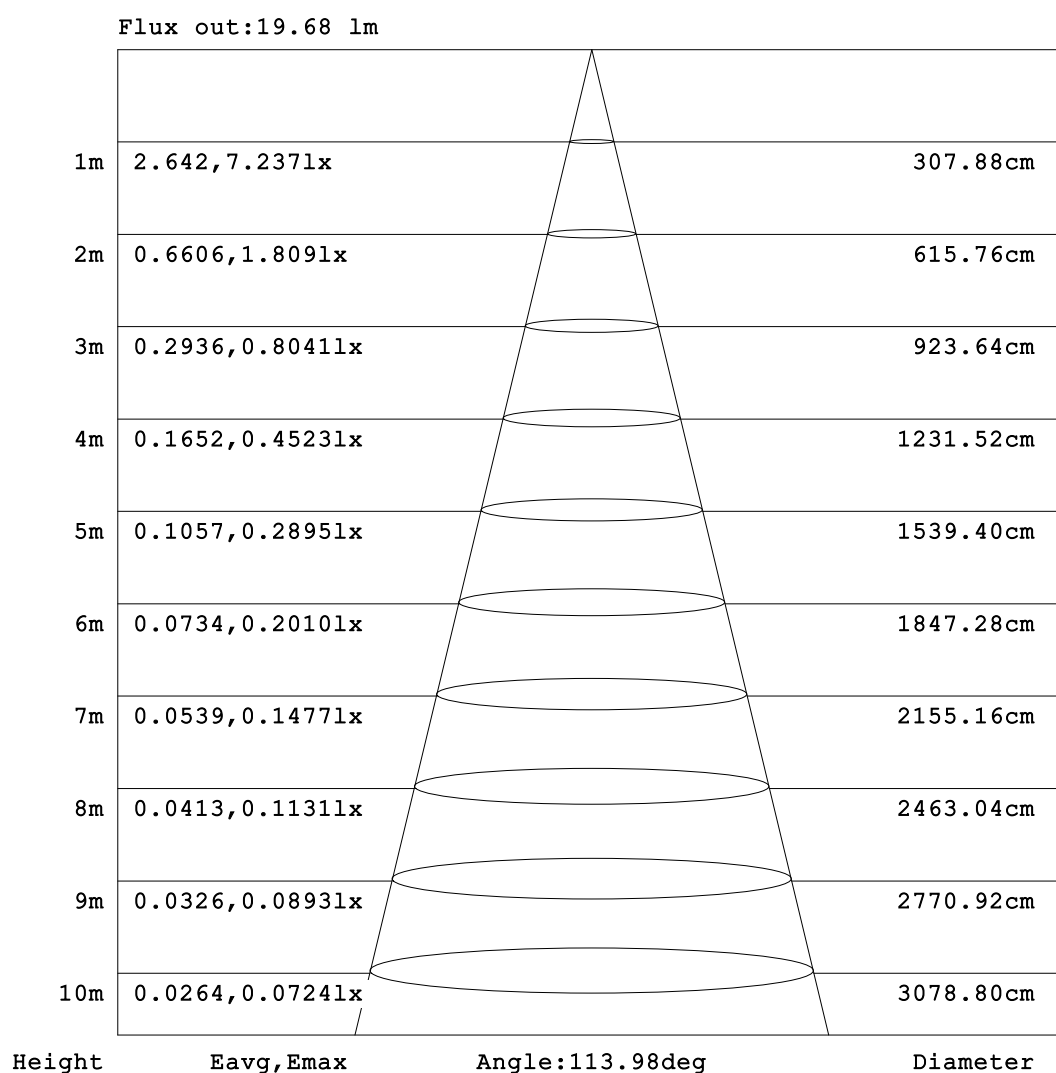


C Range: 0 - 360DEG
C Interval: 22.5DEG
Test Speed: HIGH
Temperature: 25.3°C
Operators: Cloud
Test Date: 2024-10-15

γ Range: 0 - 180DEG
γ Interval: 1.0DEG
Test System: EVERFINE GO-2000B_V1 SYSTEM V2.00.488
Humidity: 65.0%
Test Distance: 6.360m [K=1.0000]
Remarks: BLUE

AAI Figure

| | | |
|--|-----------------|------------------|
| Test:U:24.00V I:0.1753A P:4.207W PF:1.000 Freq:0Hz Lamp Flux:48.2606x1 lm | | |
| NAME: SF18-24V-5050-72-RGBW(3000K)-80 | TYPE: | WEIGHT: |
| SPEC.: | DIM.: Length=1m | SERIAL No.: |
| MFR.: | SUR.: | Shielding Angle: |



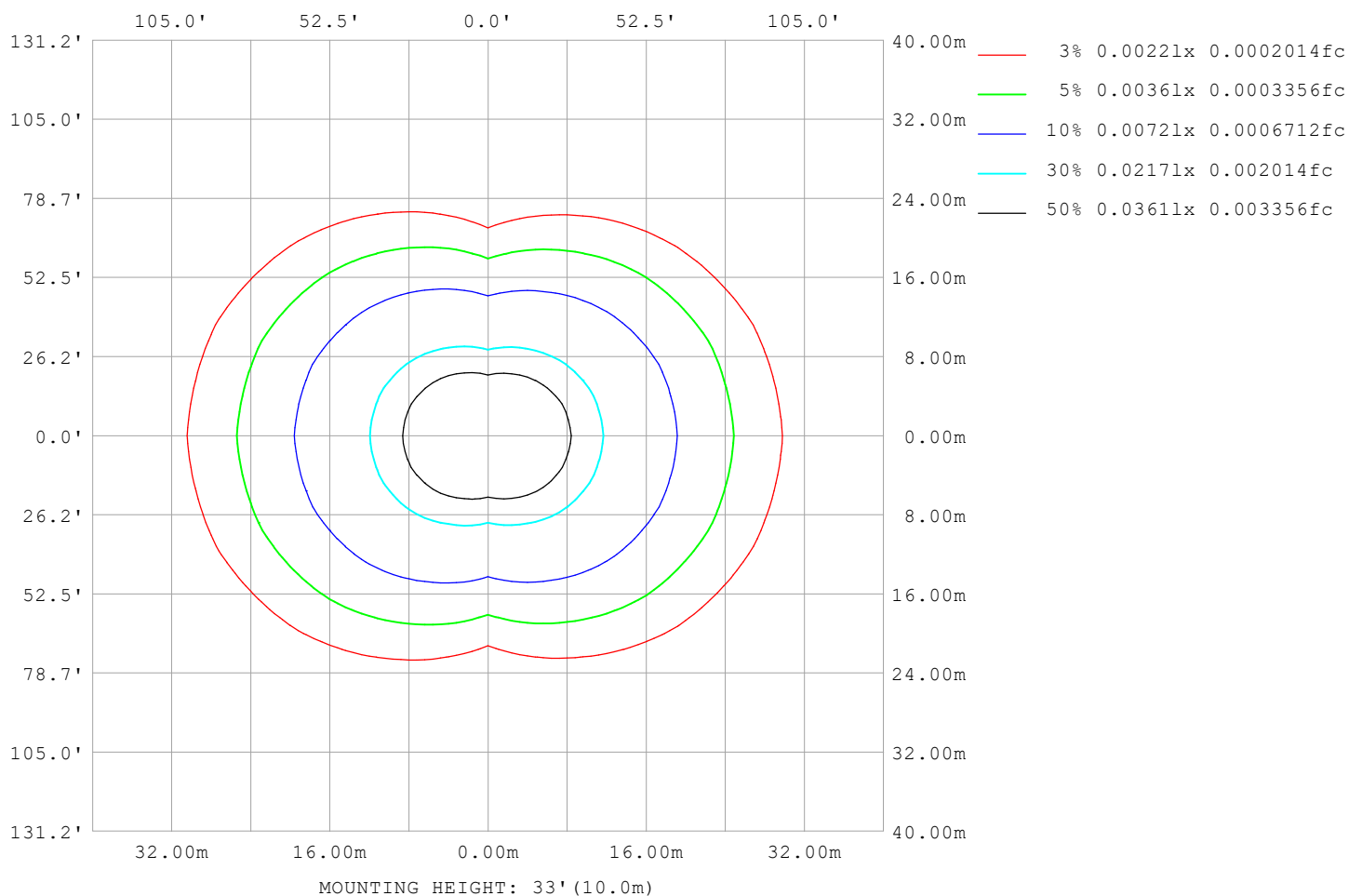
Note:The Curves indicate the illuminated area and the average illumination when the luminaire is at different distance.

C Range: 0 - 360DEG
C Interval: 22.5DEG
Test Speed: HIGH
Temperature:25.3℃
Operators:Cloud
Test Date:2024-10-15

γ Range: 0 - 180DEG
γ Interval: 1.0DEG
Test System:EVERFINE GO-2000B_V1 SYSTEM V2.00.488
Humidity:65.0%
Test Distance:6.360m [K=1.0000]
Remarks: BLUE

ISOLUX DIAGRAM

| | | |
|--|-----------------|------------------|
| Test:U:24.00V I:0.1753A P:4.207W PF:1.000 Freq:0Hz Lamp Flux:48.2606x1 lm | | |
| NAME: SF18-24V-5050-72-RGBW(3000K)-80 | TYPE: | WEIGHT: |
| SPEC.: | DIM.: Length=1m | SERIAL No.: |
| MFR.: | SUR.: | Shielding Angle: |



C Range: 0 - 360DEG
C Interval: 22.5DEG
Test Speed: HIGH
Temperature: 25.3°C
Operators: Cloud
Test Date: 2024-10-15

γ Range: 0 - 180DEG
γ Interval: 1.0DEG
Test System: EVERFINE GO-2000B_V1 SYSTEM V2.00.488
Humidity: 65.0%
Test Distance: 6.360m [K=1.0000]
Remarks: BLUE

LED Avg.L Report

| | | |
|--|-----------------|------------------|
| Test:U:24.00V I:0.1753A P:4.207W PF:1.000 Freq:0Hz Lamp Flux:48.2606x1 lm | | |
| NAME: SF18-24V-5050-72-RGBW(3000K)-80 | TYPE: | WEIGHT: |
| SPEC.: | DIM.: Length=1m | SERIAL No.: |
| MFR.: | SUR.: | Shielding Angle: |

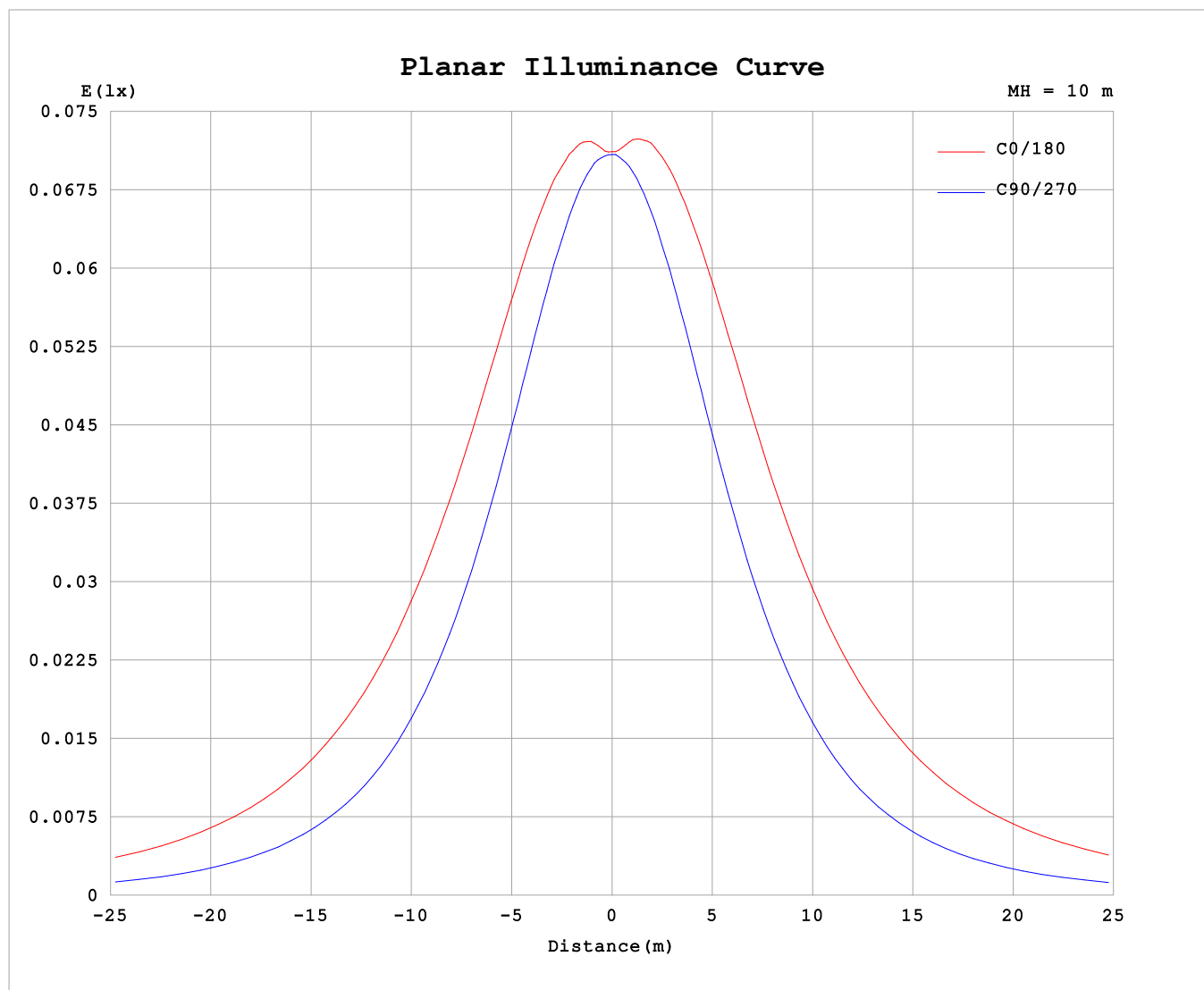
| AvgL | cd/m2 |
|------------------|-------|
| L_0~180 (65) av | 1022 |
| L_0~180 (75) av | 1511 |
| L_0~180 (85) av | 3898 |
| L_90~270 (65) av | 381 |
| L_90~270 (75) av | 387 |
| L_90~270 (85) av | 463 |
| L_45 (65) av | 798 |
| L_45 (75) av | 1120 |
| L_45 (85) av | 2719 |

Standard: GB/T 29293-2012

C Range: 0 - 360DEG
C Interval: 22.5DEG
Test Speed: HIGH
Temperature:25.3℃
Operators:Cloud
Test Date:2024-10-15

γ Range: 0 - 180DEG
γ Interval: 1.0DEG
Test System:EVERFINE GO-2000B_V1 SYSTEM V2.00.488
Humidity:65.0%
Test Distance:6.360m [K=1.0000]
Remarks: BLUE

Planar Illuminance Curve



C Range: 0 - 360DEG
C Interval: 22.5DEG
Test Speed: HIGH
Temperature: 25.3°C
Operators: Cloud
Test Date: 2024-10-15

γ Range: 0 - 180DEG
 γ Interval: 1.0DEG
Test System: EVERFINE GO-2000B_V1 SYSTEM V2.00.488
Humidity: 65.0%
Test Distance: 6.360m [K=1.0000]
Remarks: BLUE

LUMINOUS DISTRIBUTION INTENSITY DATA

| | | | | | | | | | | | | | | | | | |
|--|--|--|--|--|--|--|--|--|-----------------|--|--|--|--|--|------------------|--|--|
| Test:U:24.00V I:0.1753A P:4.207W PF:1.000 Freq:0Hz Lamp Flux:48.2606x1 lm | | | | | | | | | | | | | | | | | |
| NAME: SF18-24V-5050-72-RGBW(3000K)-80 | | | | | | | | | TYPE: | | | | | | WEIGHT: | | |
| SPEC.: | | | | | | | | | DIM.: Length=1m | | | | | | SERIAL No.: | | |
| MFR.: | | | | | | | | | SUR.: | | | | | | Shielding Angle: | | |

Table--1

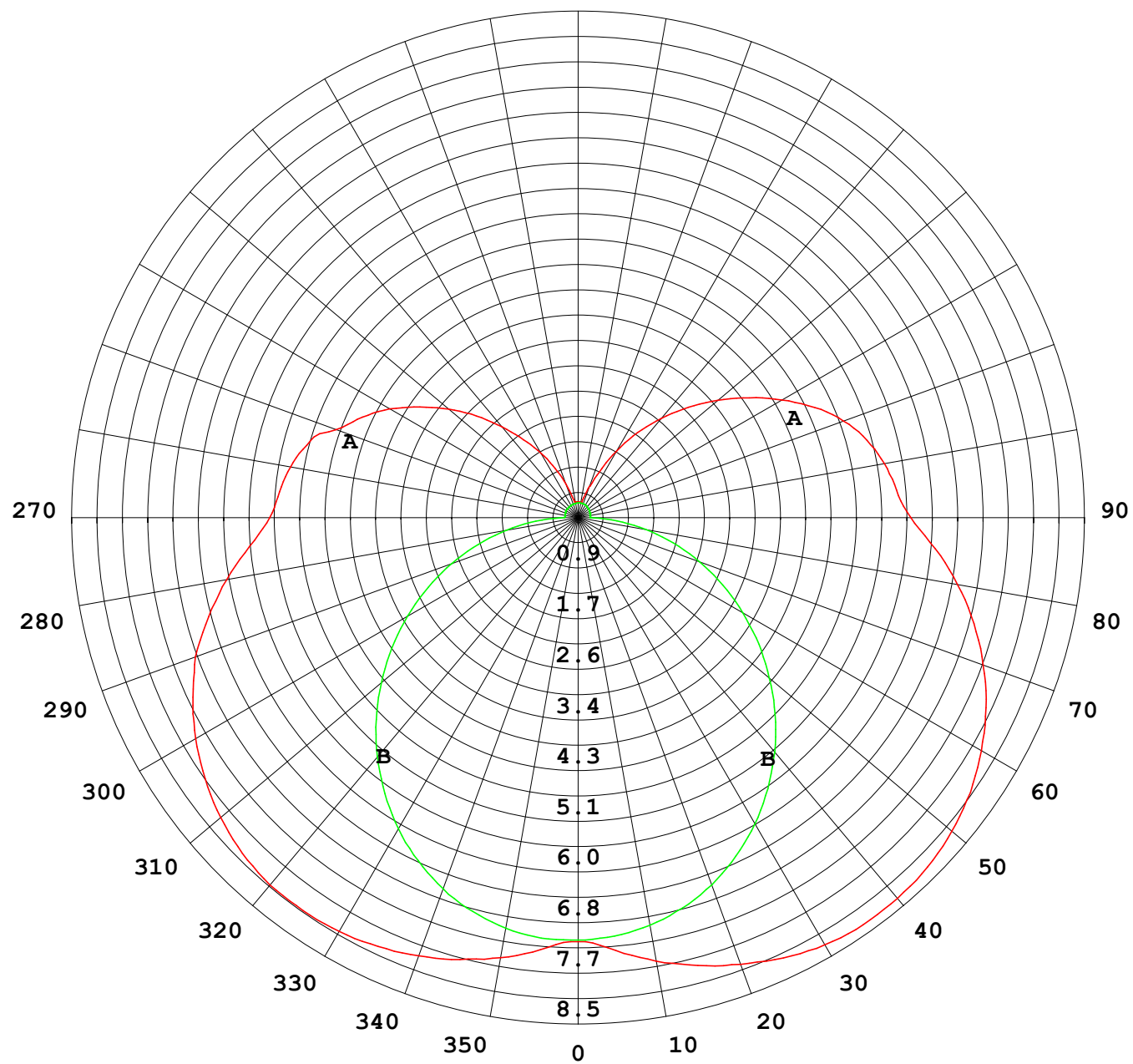
UNIT: cd

| C (DEG) γ (DEG) | 0 | 22.5 | 45 | 67.5 | 90 | 112.5 | 135 | 157.5 | 180 | 202.5 | 225 | 247.5 | 270 | 292.5 | 315 | 337.5 | | | |
|--------------------|------|------|------|------|------|-------|------|-------|------|-------|------|-------|------|-------|------|-------|--|--|--|
| 0 | 7.11 | 7.11 | 7.11 | 7.11 | 7.11 | 7.11 | 7.11 | 7.11 | 7.11 | 7.11 | 7.11 | 7.11 | 7.11 | 7.11 | 7.11 | 7.11 | | | |
| 5 | 7.28 | 7.28 | 7.18 | 7.12 | 7.11 | 7.12 | 7.19 | 7.28 | 7.29 | 7.24 | 7.19 | 7.11 | 7.08 | 7.10 | 7.19 | 7.25 | | | |
| 10 | 7.50 | 7.49 | 7.32 | 7.11 | 7.02 | 7.12 | 7.34 | 7.51 | 7.56 | 7.47 | 7.34 | 7.11 | 6.97 | 7.10 | 7.31 | 7.45 | | | |
| 15 | 7.68 | 7.62 | 7.39 | 7.08 | 6.87 | 7.10 | 7.44 | 7.71 | 7.78 | 7.65 | 7.43 | 7.09 | 6.81 | 7.05 | 7.36 | 7.58 | | | |
| 20 | 7.83 | 7.75 | 7.41 | 6.99 | 6.65 | 7.01 | 7.49 | 7.86 | 7.98 | 7.81 | 7.46 | 7.00 | 6.58 | 6.94 | 7.35 | 7.70 | | | |
| 25 | 7.94 | 7.83 | 7.41 | 6.83 | 6.38 | 6.87 | 7.50 | 7.99 | 8.15 | 7.94 | 7.45 | 6.85 | 6.29 | 6.78 | 7.32 | 7.76 | | | |
| 30 | 8.02 | 7.85 | 7.35 | 6.62 | 6.05 | 6.67 | 7.47 | 8.08 | 8.28 | 8.02 | 7.41 | 6.64 | 5.96 | 6.55 | 7.24 | 7.80 | | | |
| 35 | 8.05 | 7.84 | 7.23 | 6.37 | 5.68 | 6.42 | 7.40 | 8.08 | 8.34 | 8.05 | 7.33 | 6.40 | 5.57 | 6.28 | 7.11 | 7.80 | | | |
| 40 | 8.05 | 7.78 | 7.08 | 6.08 | 5.26 | 6.13 | 7.26 | 8.05 | 8.34 | 8.05 | 7.19 | 6.10 | 5.15 | 5.97 | 6.95 | 7.74 | | | |
| 45 | 7.97 | 7.67 | 6.87 | 5.75 | 4.81 | 5.81 | 7.09 | 7.97 | 8.29 | 7.97 | 7.00 | 5.78 | 4.69 | 5.63 | 6.74 | 7.62 | | | |
| 50 | 7.83 | 7.50 | 6.64 | 5.38 | 4.33 | 5.46 | 6.84 | 7.83 | 8.19 | 7.84 | 6.78 | 5.42 | 4.21 | 5.26 | 6.50 | 7.46 | | | |
| 55 | 7.64 | 7.28 | 6.34 | 4.99 | 3.83 | 5.08 | 6.57 | 7.63 | 8.04 | 7.64 | 6.50 | 5.05 | 3.72 | 4.87 | 6.21 | 7.25 | | | |
| 60 | 7.41 | 7.02 | 6.00 | 4.59 | 3.32 | 4.68 | 6.26 | 7.38 | 7.82 | 7.41 | 6.19 | 4.65 | 3.21 | 4.47 | 5.89 | 7.00 | | | |
| 65 | 7.13 | 6.73 | 5.65 | 4.14 | 2.79 | 4.25 | 5.89 | 7.08 | 7.55 | 7.12 | 5.86 | 4.23 | 2.69 | 4.05 | 5.55 | 6.72 | | | |
| 70 | 6.84 | 6.39 | 5.26 | 3.70 | 2.27 | 3.80 | 5.49 | 6.74 | 7.23 | 6.79 | 5.47 | 3.80 | 2.18 | 3.61 | 5.14 | 6.36 | | | |
| 75 | 6.42 | 6.00 | 4.84 | 3.23 | 1.74 | 3.33 | 5.07 | 6.36 | 6.88 | 6.42 | 5.07 | 3.34 | 1.66 | 3.13 | 4.73 | 5.97 | | | |
| 80 | 5.99 | 5.56 | 4.40 | 2.76 | 1.23 | 2.84 | 4.62 | 5.93 | 6.47 | 6.01 | 4.64 | 2.88 | 1.16 | 2.66 | 4.29 | 5.56 | | | |
| 85 | 5.53 | 5.10 | 3.94 | 2.29 | 0.72 | 2.36 | 4.15 | 5.48 | 6.02 | 5.55 | 4.19 | 2.40 | 0.66 | 2.20 | 3.83 | 5.09 | | | |
| 90 | 5.18 | 4.72 | 3.54 | 1.87 | 0.24 | 1.92 | 3.73 | 5.06 | 5.59 | 5.14 | 3.77 | 1.99 | 0.21 | 1.81 | 3.46 | 4.73 | | | |
| 95 | 5.03 | 4.58 | 3.43 | 1.83 | 0.23 | 1.85 | 3.60 | 4.86 | 5.36 | 4.94 | 3.64 | 1.93 | 0.21 | 1.77 | 3.37 | 4.60 | | | |
| 100 | 4.90 | 4.47 | 3.33 | 1.53 | 0.23 | 1.75 | 3.50 | 4.72 | 5.22 | 4.81 | 3.54 | 1.83 | 0.21 | 1.11 | 3.28 | 4.49 | | | |
| 105 | 4.71 | 4.25 | 2.94 | 1.28 | 0.23 | 1.58 | 3.33 | 4.54 | 5.02 | 4.62 | 3.37 | 1.64 | 0.21 | 1.08 | 2.85 | 4.28 | | | |
| 110 | 4.32 | 3.83 | 2.69 | 1.15 | 0.23 | 1.40 | 3.08 | 4.27 | 4.74 | 4.35 | 3.11 | 1.45 | 0.21 | 1.02 | 2.41 | 3.91 | | | |
| 115 | 3.99 | 3.54 | 2.41 | 1.01 | 0.24 | 1.22 | 2.78 | 3.92 | 4.38 | 3.99 | 2.80 | 1.26 | 0.22 | 0.98 | 2.17 | 3.03 | | | |
| 120 | 3.65 | 3.22 | 2.17 | 0.84 | 0.23 | 1.04 | 2.48 | 3.53 | 3.95 | 3.60 | 2.49 | 1.07 | 0.22 | 0.88 | 2.03 | 3.00 | | | |
| 125 | 3.24 | 2.85 | 1.85 | 0.72 | 0.24 | 0.84 | 2.18 | 3.13 | 3.51 | 3.18 | 2.18 | 0.87 | 0.23 | 0.71 | 1.67 | 2.66 | | | |
| 130 | 2.84 | 2.49 | 1.51 | 0.59 | 0.24 | 0.67 | 1.87 | 2.72 | 3.07 | 2.76 | 1.87 | 0.70 | 0.23 | 0.57 | 1.38 | 2.33 | | | |
| 135 | 2.42 | 2.14 | 1.23 | 0.47 | 0.24 | 0.52 | 1.56 | 2.32 | 2.63 | 2.35 | 1.55 | 0.55 | 0.23 | 0.46 | 1.15 | 1.95 | | | |
| 140 | 1.99 | 1.76 | 0.96 | 0.36 | 0.24 | 0.40 | 1.24 | 1.91 | 2.17 | 1.95 | 1.23 | 0.42 | 0.24 | 0.37 | 0.92 | 1.65 | | | |
| 145 | 1.60 | 1.25 | 0.75 | 0.28 | 0.24 | 0.29 | 0.95 | 1.51 | 1.74 | 1.55 | 0.93 | 0.32 | 0.25 | 0.30 | 0.70 | 1.24 | | | |
| 150 | 1.25 | 0.89 | 0.56 | 0.26 | 0.24 | 0.25 | 0.69 | 1.10 | 1.29 | 1.14 | 0.68 | 0.26 | 0.25 | 0.26 | 0.52 | 0.93 | | | |
| 155 | 0.91 | 0.60 | 0.41 | 0.26 | 0.24 | 0.25 | 0.48 | 0.76 | 0.83 | 0.80 | 0.46 | 0.25 | 0.25 | 0.25 | 0.38 | 0.64 | | | |
| 160 | 0.60 | 0.39 | 0.30 | 0.26 | 0.24 | 0.25 | 0.31 | 0.48 | 0.56 | 0.51 | 0.29 | 0.25 | 0.25 | 0.25 | 0.28 | 0.43 | | | |
| 165 | 0.34 | 0.27 | 0.27 | 0.26 | 0.25 | 0.25 | 0.27 | 0.27 | 0.31 | 0.30 | 0.26 | 0.25 | 0.25 | 0.25 | 0.26 | 0.30 | | | |
| 170 | 0.27 | 0.27 | 0.27 | 0.26 | 0.25 | 0.25 | 0.27 | 0.27 | 0.26 | 0.27 | 0.27 | 0.25 | 0.25 | 0.25 | 0.26 | 0.28 | | | |
| 175 | 0.27 | 0.27 | 0.27 | 0.26 | 0.25 | 0.25 | 0.27 | 0.27 | 0.26 | 0.27 | 0.27 | 0.25 | 0.25 | 0.25 | 0.26 | 0.28 | | | |
| 180 | 0.27 | 0.27 | 0.27 | 0.26 | 0.25 | 0.25 | 0.27 | 0.27 | 0.26 | 0.27 | 0.27 | 0.25 | 0.25 | 0.26 | 0.26 | 0.28 | | | |

C Range: 0 - 360DEG
C Interval: 22.5DEG
Test Speed: HIGH
Temperature:25.3℃
Operators:Cloud
Test Date:2024-10-15

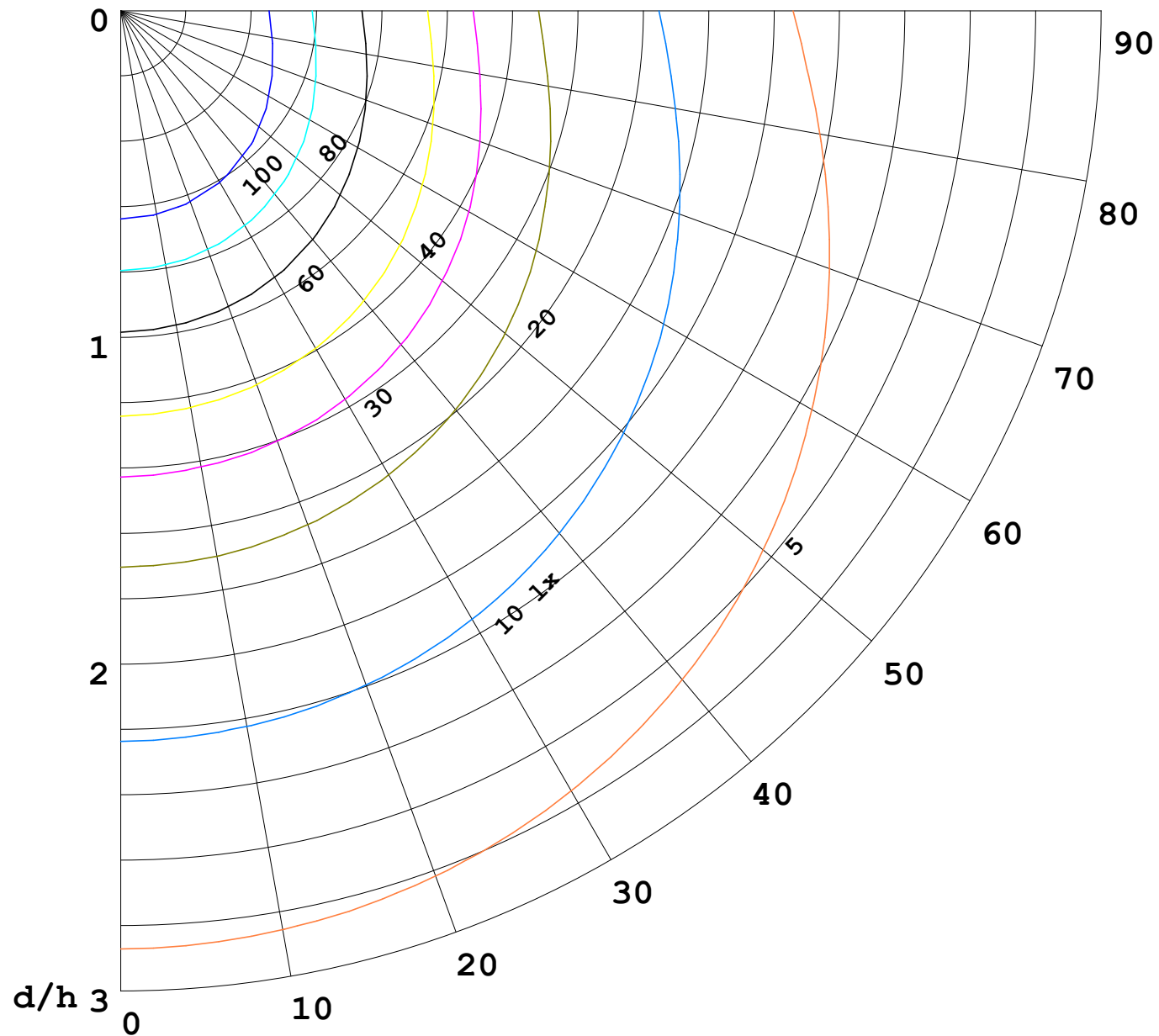
γ Range: 0 - 180DEG
γ Interval: 1.0DEG
Test System:EVERFINE GO-2000B_V1 SYSTEM V2.00.488
Humidity:65.0%
Test Distance:6.360m [K=1.0000]
Remarks: BLUE

I (cd)



1000 lm

$\kappa = 1$



F = 1000 lm
 K = 0.7
 Hcc = 0.8 m
 Hfc = 0.0 m
 Eave = 100 lx

| | Pcc | Pw | Pfc |
|------|-----|----|-----|
| ———— | 70 | 50 | 30 |
| ———— | 50 | 30 | 20 |

