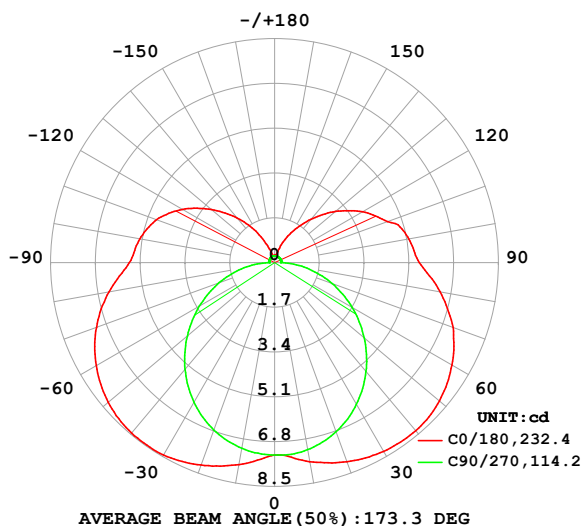


LUMINAIRE PHOTOMETRIC TEST REPORT

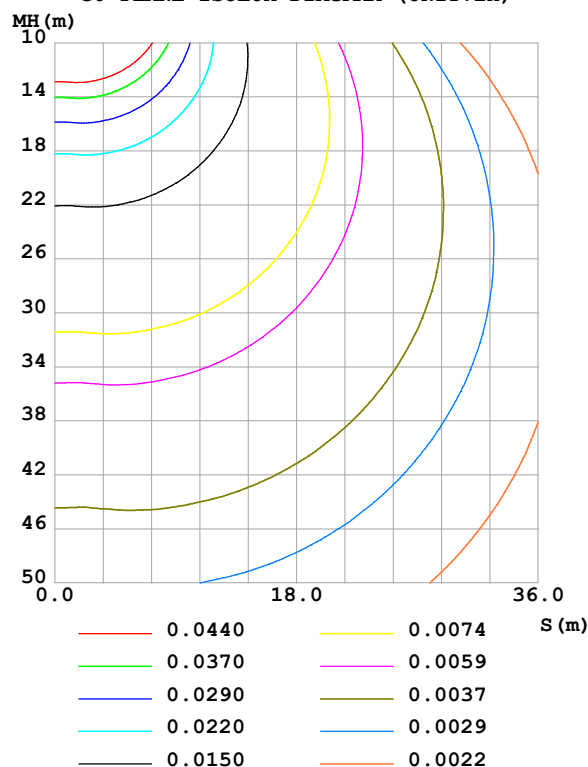
Test:U:24.00V I:0.1769A P:4.246W PF:1.000 Freq:0Hz Lamp Flux:49.581x1 lm		
NAME: SF18-24V-5050-72-RGBW(2700K)-80	TYPE:	WEIGHT:
SPEC.:	DIM.: Length=1m	SERIAL No.:
MFR.:	SUR.:	Shielding Angle:

DATA OF LAMP		PHOTOMETRIC DATA Eff: 11.68 lm/W			
MODEL		Imax (cd)	8.462	S/MH(C0/180)	1.73
NOMINAL POWER(W)		LOR(%)	100.0	S/MH(C90/270)	1.25
RATED VOLTAGE(V)		TOTAL FLUX(lm)	49.581	η UP,DN(C0-180)	13.1,37.1
NOMINAL FLUX(lm)	49.581	CIE CLASS	SEMI-D.	η UP,DN(C180-360)	13.0,36.8
LAMPS INSIDE	1	η up (%)	26.1	CIBSE SHR NOM	1.50
TEST VOLTAGE(V)		η down (%)	73.9	CIBSE SHR MAX	1.55

LUMINOUS INTENSITY DISTRIBUTION DIAGRAM



C0 PLANE ISOLUX DIAGRAM (UNIT:lx)



C Range: 0 - 360DEG
C Interval: 22.5DEG
Test Speed: HIGH
Temperature:25.3℃
Operators:Cloud
Test Date:2024-10-15

γ Range: 0 - 180DEG
 γ Interval: 1.0DEG
Test System:EVERFINE GO-2000B_V1 SYSTEM V2.00.488
Humidity:65.0%
Test Distance:6.360m [K=1.0000]
Remarks: BLUE

ZONAL FLUX DIAGRAM

ZONAL FLUX DIAGRAM:

γ	C0	C45	C90	C135	C180	C225	C270	C315	γ	Φ zone	Φ total	%lum, lamp
10	7.674	7.464	7.208	7.583	7.782	7.571	7.161	7.474	0- 10	0.7083	0.7083	1.43,1.43
20	8.041	7.588	6.829	7.707	8.172	7.658	6.761	7.554	10- 20	2.139	2.847	5.74,5.74
30	8.275	7.548	6.216	7.679	8.437	7.577	6.121	7.456	20- 30	3.478	6.325	12.8,12.8
40	8.333	7.303	5.400	7.419	8.445	7.314	5.290	7.179	30- 40	4.582	10.91	22,22
50	8.171	6.874	4.447	6.943	8.249	6.850	4.326	6.757	40- 50	5.334	16.24	32.8,32.8
60	7.776	6.263	3.402	6.299	7.819	6.230	3.296	6.151	50- 60	5.660	21.90	44.2,44.2
70	7.214	5.514	2.323	5.494	7.195	5.463	2.236	5.397	60- 70	5.546	27.45	55.4,55.4
80	6.378	4.667	1.249	4.588	6.382	4.593	1.186	4.551	70- 80	5.018	32.47	65.5,65.5
90	5.495	3.762	0.2527	3.707	5.517	3.726	0.2142	3.677	80- 90	4.164	36.63	73.9,73.9
100	5.175	3.519	0.2374	3.505	5.191	3.522	0.2142	3.457	90-100	3.573	40.20	81.1,81.1
110	4.567	2.834	0.2489	3.156	4.770	3.155	0.2200	2.453	100-110	3.120	43.32	87.4,87.4
120	3.866	2.312	0.2489	2.561	4.043	2.550	0.2316	2.127	110-120	2.460	45.78	92.3,92.3
130	3.027	1.627	0.2518	1.912	3.140	1.896	0.2403	1.431	120-130	1.764	47.55	95.9,95.9
140	2.144	1.050	0.2518	1.248	2.211	1.236	0.2518	0.9779	130-140	1.105	48.65	98.1,98.1
150	1.368	0.6345	0.2547	0.6789	1.294	0.6652	0.2576	0.5510	140-150	0.5769	49.23	99.3,99.3
160	0.6727	0.3432	0.2547	0.2976	0.5387	0.2709	0.2634	0.2971	150-160	0.2417	49.47	99.8,99.8
170	0.2740	0.2738	0.2547	0.2771	0.2711	0.2709	0.2634	0.2656	160-170	0.0854	49.56	99.9,99.9
180	0.2711	0.2709	0.2547	0.2771	0.2711	0.2709	0.2634	0.2627	170-180	0.0257	49.58	100,100
DEG	LUMINOUS INTENSITY:cd									UNIT:lm		

Conical surface Flux(90deg): 13.506 lm

%lum = 27.2%

%lamp = 27.2%

Conical surface Flux(130deg): 24.715 lm

%lum = 49.8%

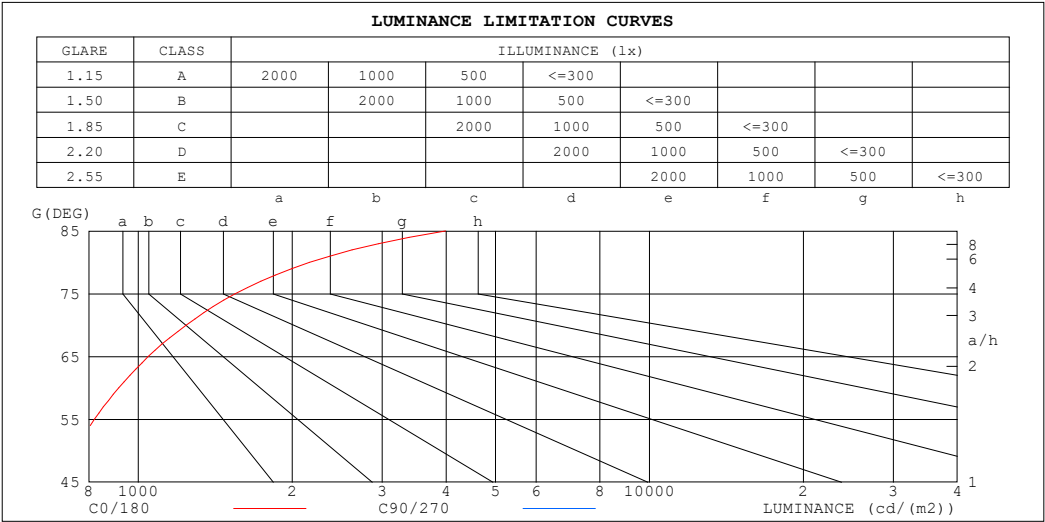
%lamp = 49.8%

C Range: 0 - 360DEG
 C Interval: 22.5DEG
 Test Speed: HIGH
 Temperature:25.3℃
 Operators:Cloud
 Test Date:2024-10-15

γ Range: 0 - 180DEG
 γ Interval: 1.0DEG
 Test System:EVERFINE GO-2000B_V1 SYSTEM V2.00.488
 Humidity:65.0%
 Test Distance:6.360m [K=1.0000]
 Remarks: BLUE

LUMINANCE LIMITATION CURVES

Test:U:24.00V I:0.1769A P:4.246W PF:1.000 Freq:0Hz Lamp Flux:49.581x1 lm		
NAME: SF18-24V-5050-72-RGBW(2700K) -80	TYPE:	WEIGHT:
SPEC.:	DIM.: Length=1m	SERIAL No.:
MFR.:	SUR.:	Shielding Angle:



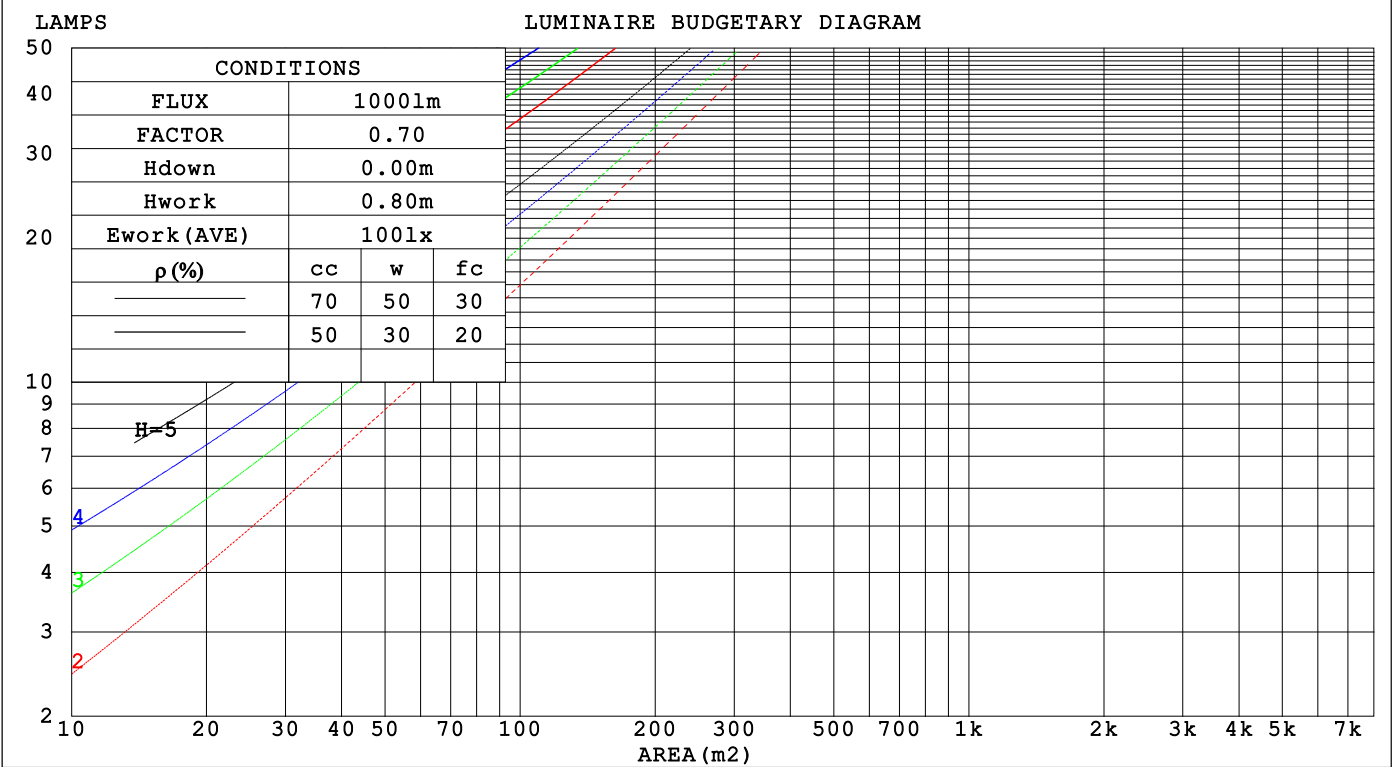
LUMINANCE cd/(m2)		
G (DEG)	C0/180	C90/270
85	3990	496
80	2162	422
75	1546	404
70	1242	398
65	1046	397
60	915	399
55	821	401
50	748	406
45	690	410

C Range: 0 - 360DEG	γ Range: 0 - 180DEG
C Interval: 22.5DEG	γ Interval: 1.0DEG
Test Speed: HIGH	Test System:EVERFINE GO-2000B_V1 SYSTEM V2.00.488
Temperature:25.3℃	Humidity:65.0%
Operators:Cloud	Test Distance:6.360m [K=1.0000]
Test Date:2024-10-15	Remarks: BLUE

CU AND LUMINAIRE BUDGETARY ESTIMATE DIAGRAM

Test:U:24.00V I:0.1769A P:4.246W PF:1.000 Freq:0Hz		
Lamp Flux:49.58lx1 lm		
NAME: SF18-24V-5050-72-RGBW(2700K)-80	TYPE:	WEIGHT:
SPEC.:	DIM.: Length=1m	SERIAL No.:
MFR.:	SUR.:	Shielding Angle:

pcc	80%			70%			50%			30%			10%			0
pw	50%	30%	10%	50%	30%	10%	50%	30%	10%	50%	30%	10%	50%	30%	10%	0
pfc	20%			20%			20%			20%			20%			0
RCR	RCR:Room Cavity Ratio			Coefficients of Utilization(CU)												
0.0	1.13	1.13	1.13	1.07	1.07	1.07	.97	.97	.97	.87	.87	.87	.78	.78	.78	.74
1.0	.93	.87	.82	.88	.83	.78	.79	.75	.71	.70	.67	.64	.63	.60	.58	.54
2.0	.79	.71	.64	.75	.67	.61	.67	.61	.56	.59	.55	.51	.53	.49	.46	.42
3.0	.68	.59	.51	.64	.56	.49	.57	.51	.45	.51	.46	.41	.45	.41	.37	.34
4.0	.59	.50	.42	.56	.47	.41	.50	.43	.37	.45	.39	.34	.40	.35	.31	.28
5.0	.52	.43	.36	.50	.41	.34	.45	.37	.31	.40	.34	.29	.35	.30	.26	.23
6.0	.47	.37	.31	.44	.36	.29	.40	.33	.27	.36	.29	.25	.32	.27	.23	.20
7.0	.42	.33	.26	.40	.31	.25	.36	.29	.24	.32	.26	.22	.29	.24	.20	.17
8.0	.38	.29	.23	.36	.28	.22	.33	.26	.21	.29	.23	.19	.26	.21	.17	.15
9.0	.35	.26	.21	.33	.25	.20	.30	.23	.18	.27	.21	.17	.24	.19	.15	.13
10.0	.32	.24	.18	.30	.23	.18	.28	.21	.16	.25	.19	.15	.22	.18	.14	.12



C Range: 0 - 360DEG
C Interval: 22.5DEG
Test Speed: HIGH
Temperature:25.3℃
Operators:Cloud
Test Date:2024-10-15

γ Range: 0 - 180DEG
γ Interval: 1.0DEG
Test System:EVERFINE GO-2000B_V1 SYSTEM V2.00.488
Humidity:65.0%
Test Distance:6.360m [K=1.0000]
Remarks: BLUE

WEC AND CCEC

Test:U:24.00V I:0.1769A P:4.246W PF:1.000 Freq:0Hz Lamp Flux:49.581x1 lm		
NAME: SF18-24V-5050-72-RGBW(2700K)-80	TYPE:	WEIGHT:
SPEC.:	DIM.: Length=1m	SERIAL No.:
MFR.:	SUR.:	Shielding Angle:

pcc	80%			70%			50%			30%			10%			0														
pw	50%	30%	10%	50%	30%	10%	50%	30%	10%	50%	30%	10%	50%	30%	10%	0														
pfc	20%			20%			20%			20%			20%			0														
RCR	RCR:Room Cavity Ratio															Wall Exitance Coefficients(WEC)														
0.0																														
1.0	.402	.228	.072	.386	.220	.070	.358	.205	.066	.332	.191	.061	.308	.178	.057															
2.0	.343	.188	.058	.329	.181	.056	.304	.169	.052	.280	.157	.049	.258	.146	.046															
3.0	.303	.161	.048	.290	.155	.047	.267	.144	.044	.245	.134	.041	.225	.124	.038															
4.0	.271	.141	.041	.260	.136	.040	.238	.126	.038	.218	.117	.035	.200	.109	.033															
5.0	.245	.125	.036	.235	.121	.035	.216	.112	.033	.197	.104	.031	.180	.096	.029															
6.0	.224	.112	.032	.215	.109	.031	.197	.101	.029	.180	.094	.028	.165	.087	.026															
7.0	.206	.102	.029	.198	.098	.028	.181	.092	.026	.166	.085	.025	.151	.079	.023															
8.0	.191	.093	.026	.183	.090	.025	.168	.084	.024	.154	.078	.022	.140	.072	.021															
9.0	.178	.086	.024	.170	.083	.023	.156	.077	.022	.143	.072	.021	.131	.066	.019															
10.0	.166	.080	.022	.159	.077	.021	.146	.072	.020	.134	.067	.019	.122	.062	.018															

pcc	80%			70%			50%			30%			10%			0
pw	50%	30%	10%	50%	30%	10%	50%	30%	10%	50%	30%	10%	50%	30%	10%	0
pfc	20%			20%			20%			20%			20%			0
RCR	RCR:Room Cavity Ratio						Ceiling Cavity Exitance Coefficients (CCEC)									
0.0	.389	.389	.389	.333	.333	.333	.227	.227	.227	.131	.131	.131	.042	.042	.042	
1.0	.387	.356	.328	.331	.306	.282	.227	.210	.195	.130	.122	.113	.042	.039	.037	
2.0	.381	.334	.294	.326	.287	.254	.224	.199	.177	.129	.116	.104	.041	.037	.034	
3.0	.374	.318	.273	.321	.274	.236	.220	.190	.166	.127	.111	.098	.041	.036	.032	
4.0	.366	.305	.259	.314	.264	.225	.216	.184	.158	.125	.108	.094	.040	.035	.031	
5.0	.359	.296	.250	.308	.256	.217	.212	.179	.153	.123	.105	.091	.040	.034	.030	
6.0	.351	.288	.243	.302	.250	.212	.208	.175	.150	.121	.103	.089	.039	.034	.029	
7.0	.344	.282	.238	.296	.244	.207	.204	.171	.147	.119	.101	.087	.038	.033	.029	
8.0	.337	.276	.234	.290	.240	.204	.201	.168	.145	.117	.099	.086	.038	.033	.029	
9.0	.331	.272	.231	.285	.236	.202	.198	.166	.143	.115	.098	.085	.037	.032	.028	
10.0	.325	.267	.229	.280	.232	.200	.194	.163	.142	.113	.097	.085	.037	.032	.028	

C Range: 0 - 360DEG
C Interval: 22.5DEG
Test Speed: HIGH
Temperature:25.3℃
Operators:Cloud
Test Date:2024-10-15

γ Range: 0 - 180DEG
γ Interval: 1.0DEG
Test System:EVERFINE GO-2000B_V1 SYSTEM V2.00.488
Humidity:65.0%
Test Distance:6.360m [K=1.0000]
Remarks: BLUE

UGR(Unified Glare Rating) Table

Test:U:24.00V I:0.1769A P:4.246W PF:1.000 Freq:0Hz Lamp Flux:49.58lx1 lm										
NAME: SF18-24V-5050-72-RGBW(2700K)-80					TYPE:			WEIGHT:		
SPEC.:					DIM.: Length=1m			SERIAL No.:		
MFR.:					SUR.:			Shielding Angle:		
ceiling/cavity	0.7	0.7	0.5	0.5	0.3	0.7	0.7	0.5	0.5	0.3
walls	0.5	0.3	0.5	0.3	0.3	0.5	0.3	0.5	0.3	0.3
working plane	0.2	0.2	0.2	0.2	0.2	0.2	0.2	0.2	0.2	0.2
Room dimensions	Viewed crosswise					Viewed endwise				
x = 2H y = 2H	21.7	23.0	22.3	23.6	24.4	18.6	19.9	19.2	20.5	21.2
3H	24.7	25.9	25.3	26.5	27.3	20.3	21.5	21.0	22.2	22.9
4H	26.3	27.4	26.9	28.1	28.9	21.1	22.2	21.8	22.9	23.7
6H	28.0	29.1	28.7	29.8	30.6	21.8	22.8	22.4	23.5	24.3
8H	29.0	30.0	29.7	30.7	31.5	22.0	23.1	22.7	23.8	24.6
12H	30.1	31.1	30.8	31.8	32.6	22.3	23.3	23.0	24.0	24.8
4H 2H	22.3	23.4	22.9	24.1	24.9	20.2	21.3	20.8	22.0	22.8
3H	25.5	26.5	26.2	27.2	28.0	22.2	23.2	22.9	23.9	24.7
4H	27.3	28.2	28.0	28.9	29.8	23.1	24.1	23.9	24.8	25.7
6H	29.3	30.1	30.0	30.8	31.7	24.0	24.8	24.8	25.6	26.5
8H	30.3	31.1	31.1	31.9	32.8	24.4	25.2	25.1	25.9	26.8
12H	31.6	32.3	32.3	33.1	34.0	24.7	25.4	25.5	26.2	27.1
8H 4H	27.6	28.4	28.4	29.2	30.1	24.5	25.3	25.3	26.0	26.9
6H	29.9	30.6	30.7	31.4	32.3	25.8	26.4	26.6	27.2	28.2
8H	31.2	31.8	32.0	32.6	33.6	26.4	27.0	27.2	27.8	28.7
12H	32.7	33.2	33.5	34.1	35.0	26.9	27.4	27.7	28.3	29.2
12H 4H	27.7	28.4	28.4	29.1	30.1	24.9	25.6	25.7	26.4	27.3
6H	30.0	30.6	30.8	31.4	32.4	26.5	27.0	27.3	27.9	28.8
8H	31.5	32.0	32.3	32.8	33.8	27.3	27.8	28.1	28.6	29.6
Variations with the observer position at spacings(CIE Pub.117):										
S = 1.0H	+ 0.1 / - 0.1					+ 0.1 / - 0.1				
1.5H	+ 0.2 / - 0.3					+ 0.2 / - 0.3				
2.0H	+ 0.3 / - 0.4					+ 0.3 / - 0.5				

CIE Pub.117, 49.58 lm Total Lamp Luminous Flux Correct (8log(F/F0) = -10.4)
Area: 0.017 m2

C Range: 0 - 360DEG
C Interval: 22.5DEG
Test Speed: HIGH
Temperature:25.3℃
Operators:Cloud
Test Date:2024-10-15

γ Range: 0 - 180DEG
γ Interval: 1.0DEG
Test System:EVERFINE GO-2000B_V1 SYSTEM V2.00.488
Humidity:65.0%
Test Distance:6.360m [K=1.0000]
Remarks: BLUE

UTILIZATION FACTORS TABLE

Test:U:24.00V I:0.1769A P:4.246W PF:1.000 Freq:0Hz Lamp Flux:49.581x1 lm		
NAME: SF18-24V-5050-72-RGBW(2700K)-80	TYPE:	WEIGHT:
SPEC.:	DIM.: Length=1m	SERIAL No.:
MFR.:	SUR.:	Shielding Angle:

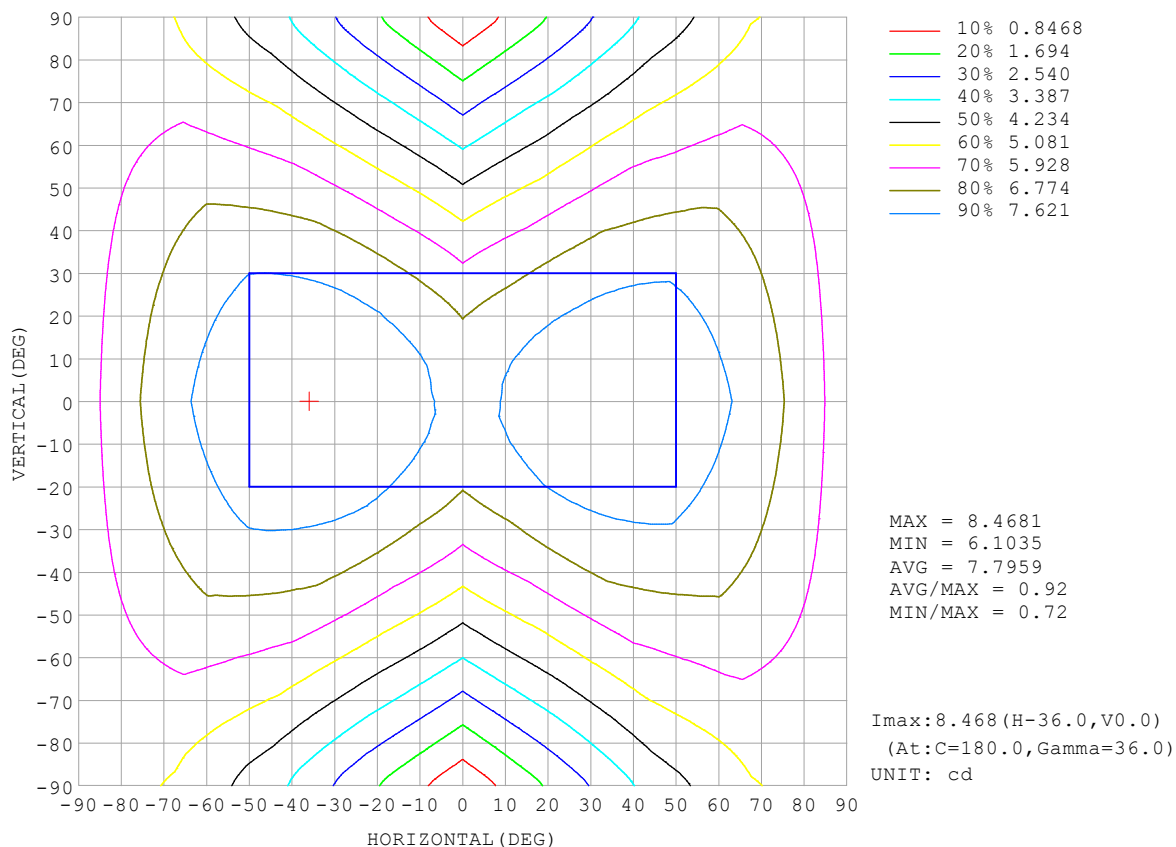
REFLECTANCE										
Ceiling	0.8	0.8	0.8	0.7	0.7	0.7	0.5	0.5	0.5	0
Walls	0.7	0.5	0.3	0.7	0.5	0.3	0.7	0.5	0.3	0
Working plane	0.2	0.2	0.2	0.2	0.2	0.2	0.2	0.2	0.2	0
ROOM INDEX	UTILIZATION FACTORS (PERCENT) $k(RI) \times RCR = 5$									
$k = 0.60$	44	31	24	42	30	23	40	29	23	16
0.80	53	39	31	51	38	30	47	36	29	21
1.00	60	47	38	58	45	37	54	45	36	26
1.25	67	54	45	64	52	44	59	49	42	31
1.50	72	59	50	69	57	49	63	54	46	35
2.00	80	68	59	76	65	57	69	61	54	40
2.50	85	74	65	81	71	63	73	65	59	44
3.00	89	78	70	84	75	68	76	69	63	48
4.00	94	85	78	89	81	75	80	74	69	52
5.00	97	89	83	92	85	79	83	78	73	55
ROOM INDEX	UF (total)									Direct
According to DIN EN 13032-2 2004			Suspended					SHRNOM = 1.25		

C Range: 0 - 360DEG
 C Interval: 22.5DEG
 Test Speed: HIGH
 Temperature: 25.3°C
 Operators: Cloud
 Test Date: 2024-10-15

γ Range: 0 - 180DEG
 γ Interval: 1.0DEG
 Test System: EVERFINE GO-2000B_V1 SYSTEM V2.00.488
 Humidity: 65.0%
 Test Distance: 6.360m [K=1.0000]
 Remarks: BLUE

ISOCANDELA DIAGRAM

Test:U:24.00V I:0.1769A P:4.246W PF:1.000 Freq:0Hz Lamp Flux:49.581x1 lm		
NAME: SF18-24V-5050-72-RGBW(2700K)-80	TYPE:	WEIGHT:
SPEC.:	DIM.: Length=1m	SERIAL No.:
MFR.:	SUR.:	Shielding Angle:

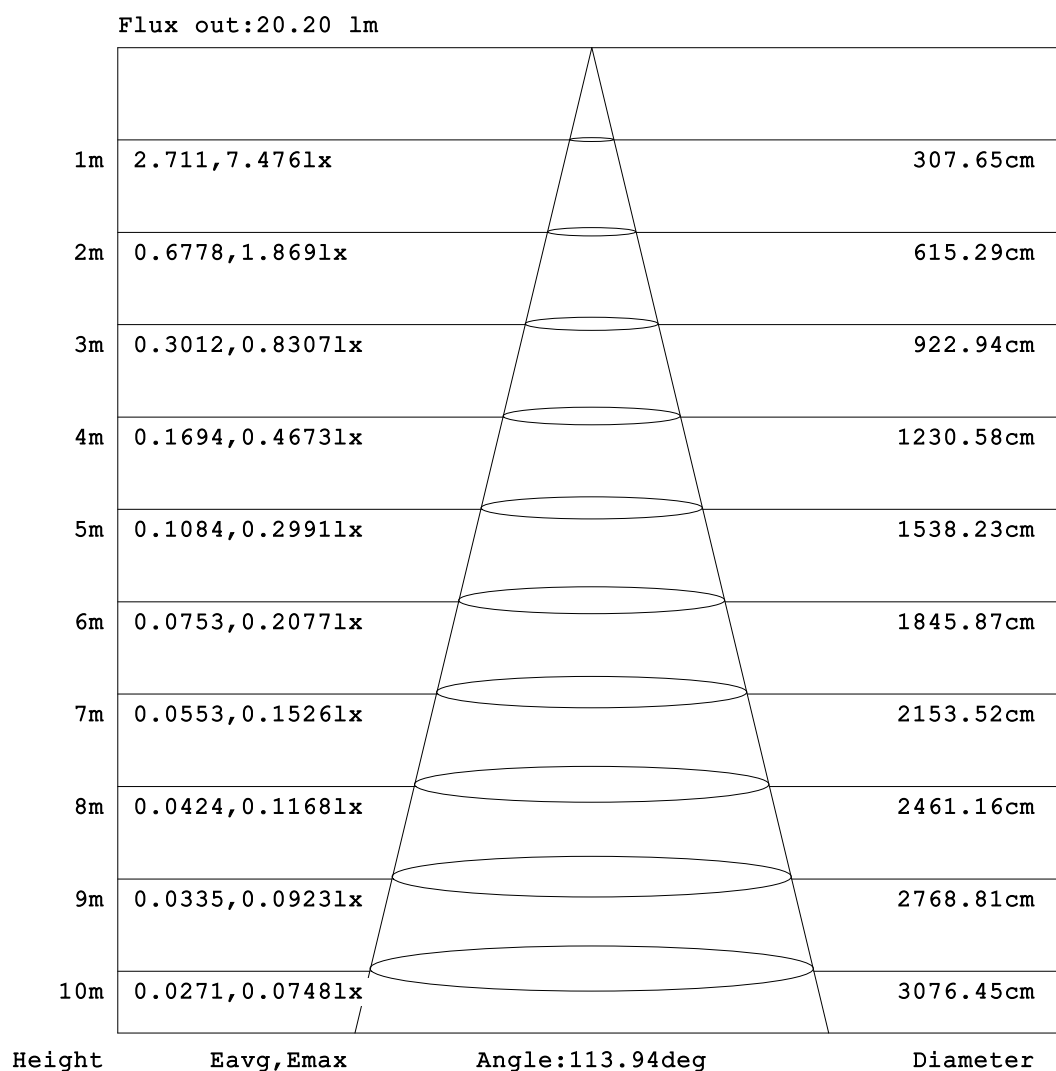


C Range: 0 - 360DEG
C Interval: 22.5DEG
Test Speed: HIGH
Temperature: 25.3°C
Operators: Cloud
Test Date: 2024-10-15

γ Range: 0 - 180DEG
γ Interval: 1.0DEG
Test System: EVERFINE GO-2000B_V1 SYSTEM V2.00.488
Humidity: 65.0%
Test Distance: 6.360m [K=1.0000]
Remarks: BLUE

AAI Figure

Test:U:24.00V I:0.1769A P:4.246W PF:1.000 Freq:0Hz Lamp Flux:49.58lx1 lm		
NAME: SF18-24V-5050-72-RGBW(2700K)-80	TYPE:	WEIGHT:
SPEC.:	DIM.: Length=1m	SERIAL No.:
MFR.:	SUR.:	Shielding Angle:



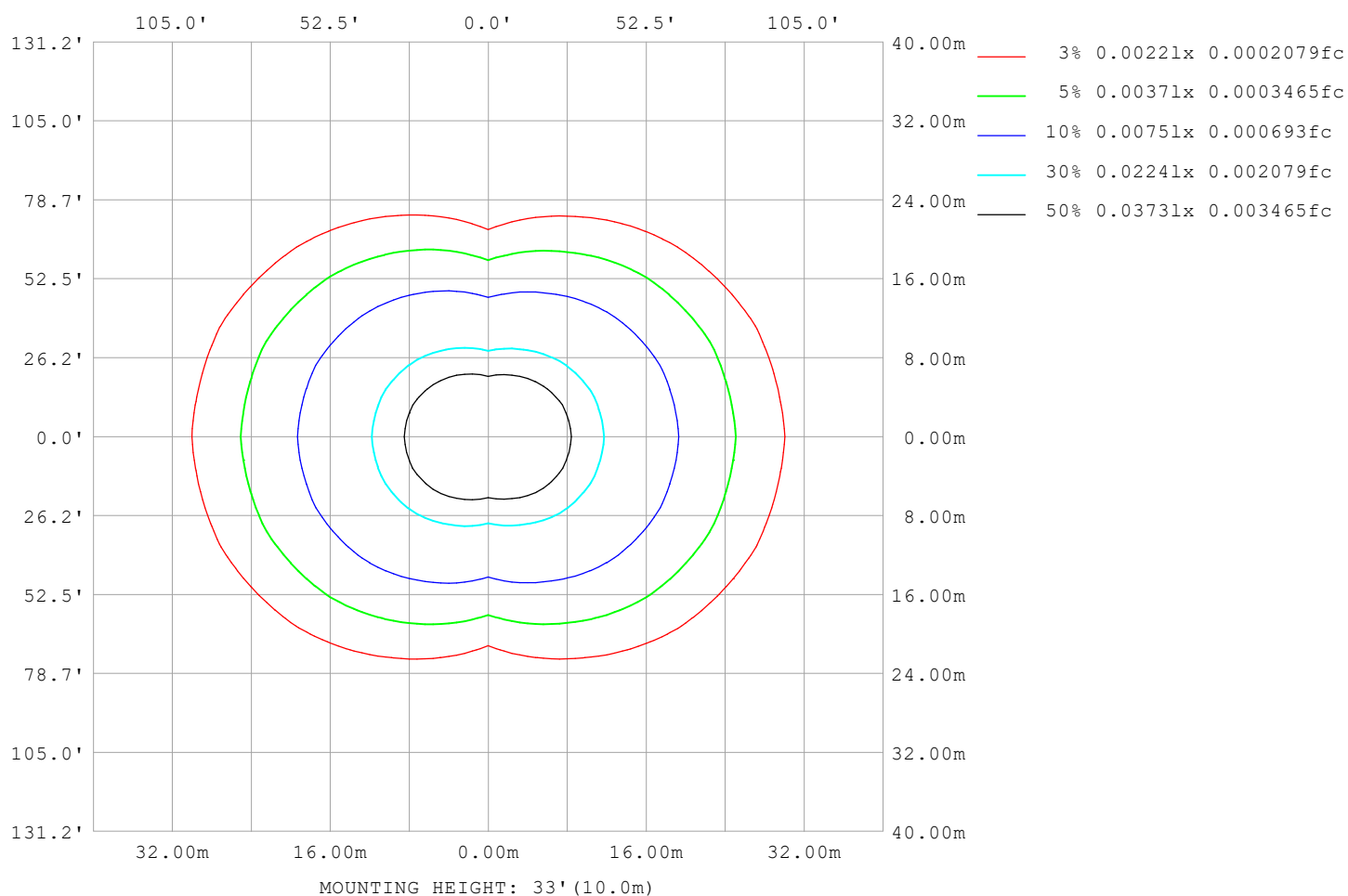
Note:The Curves indicate the illuminated area and the average illumination when the luminaire is at different distance.

C Range: 0 - 360DEG
C Interval: 22.5DEG
Test Speed: HIGH
Temperature:25.3℃
Operators:Cloud
Test Date:2024-10-15

γ Range: 0 - 180DEG
γ Interval: 1.0DEG
Test System:EVERFINE GO-2000B_V1 SYSTEM V2.00.488
Humidity:65.0%
Test Distance:6.360m [K=1.0000]
Remarks: BLUE

ISOLUX DIAGRAM

Test:U:24.00V I:0.1769A P:4.246W PF:1.000 Freq:0Hz Lamp Flux:49.58lx1 lm		
NAME: SF18-24V-5050-72-RGBW(2700K)-80	TYPE:	WEIGHT:
SPEC.:	DIM.: Length=1m	SERIAL No.:
MFR.:	SUR.:	Shielding Angle:



C Range: 0 - 360DEG
C Interval: 22.5DEG
Test Speed: HIGH
Temperature: 25.3°C
Operators: Cloud
Test Date: 2024-10-15

γ Range: 0 - 180DEG
γ Interval: 1.0DEG
Test System: EVERFINE GO-2000B_V1 SYSTEM V2.00.488
Humidity: 65.0%
Test Distance: 6.360m [K=1.0000]
Remarks: BLUE

LED Avg.L Report

Test:U:24.00V I:0.1769A P:4.246W PF:1.000 Freq:0Hz Lamp Flux:49.581x1 lm		
NAME: SF18-24V-5050-72-RGBW(2700K)-80	TYPE:	WEIGHT:
SPEC.:	DIM.: Length=1m	SERIAL No.:
MFR.:	SUR.:	Shielding Angle:

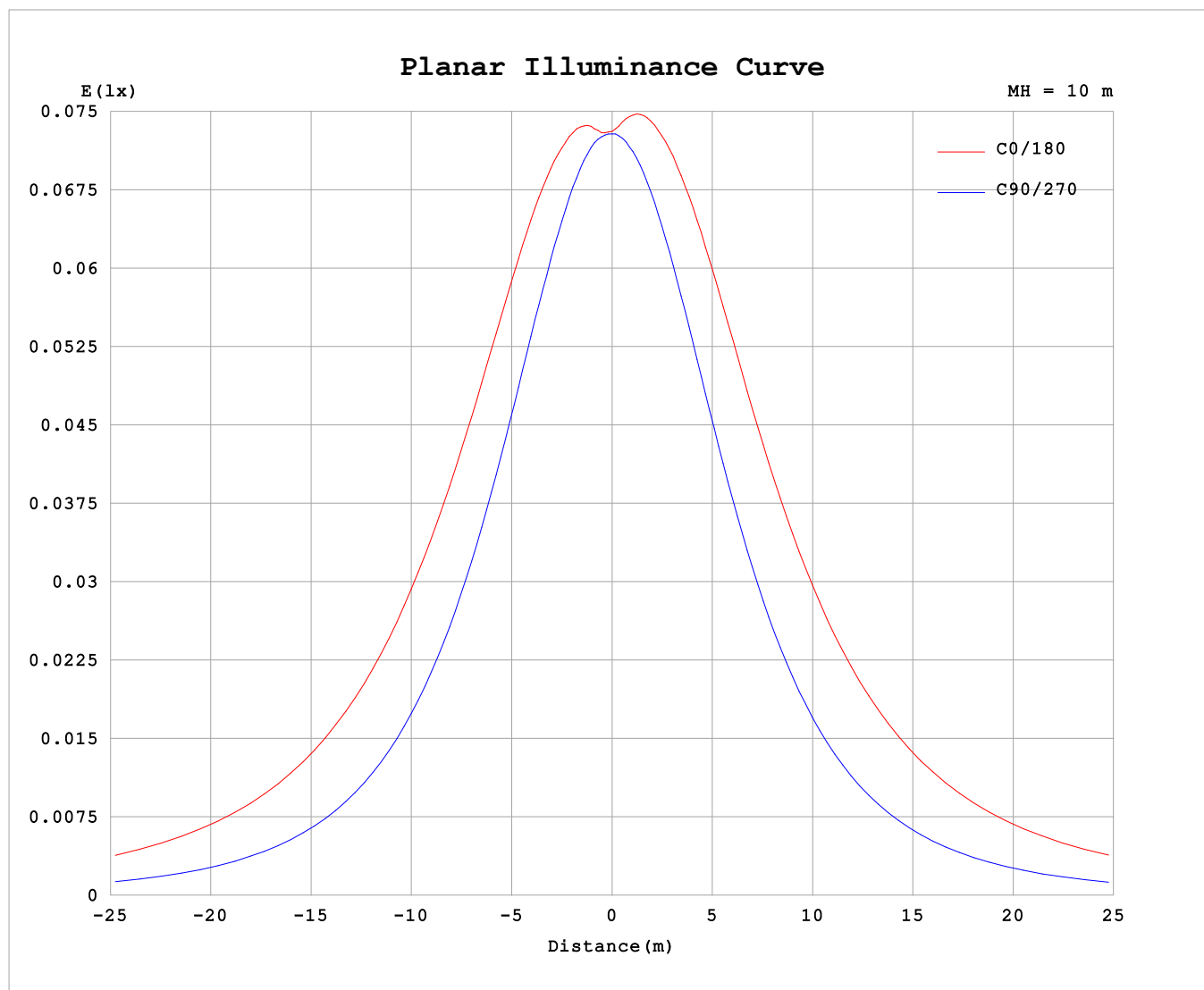
AvgL	cd/m2
L_0~180 (65) av	1047
L_0~180 (75) av	1547
L_0~180 (85) av	3992
L_90~270 (65) av	391
L_90~270 (75) av	396
L_90~270 (85) av	475
L_45 (65) av	817
L_45 (75) av	1146
L_45 (85) av	2785

Standard: GB/T 29293-2012

C Range: 0 - 360DEG
C Interval: 22.5DEG
Test Speed: HIGH
Temperature:25.3℃
Operators:Cloud
Test Date:2024-10-15

γ Range: 0 - 180DEG
γ Interval: 1.0DEG
Test System:EVERFINE GO-2000B_V1 SYSTEM V2.00.488
Humidity:65.0%
Test Distance:6.360m [K=1.0000]
Remarks: BLUE

Planar Illuminance Curve



C Range: 0 - 360DEG
C Interval: 22.5DEG
Test Speed: HIGH
Temperature: 25.3°C
Operators: Cloud
Test Date: 2024-10-15

γ Range: 0 - 180DEG
 γ Interval: 1.0DEG
Test System: EVERFINE GO-2000B_V1 SYSTEM V2.00.488
Humidity: 65.0%
Test Distance: 6.360m [K=1.0000]
Remarks: BLUE

LUMINOUS DISTRIBUTION INTENSITY DATA

Test:U:24.00V I:0.1769A P:4.246W PF:1.000 Freq:0Hz Lamp Flux:49.581x1 lm																		
NAME: SF18-24V-5050-72-RGBW(2700K)-80									TYPE:					WEIGHT:				
SPEC.:									DIM.: Length=1m					SERIAL No.:				
MFR.:									SUR.:					Shielding Angle:				

Table--1

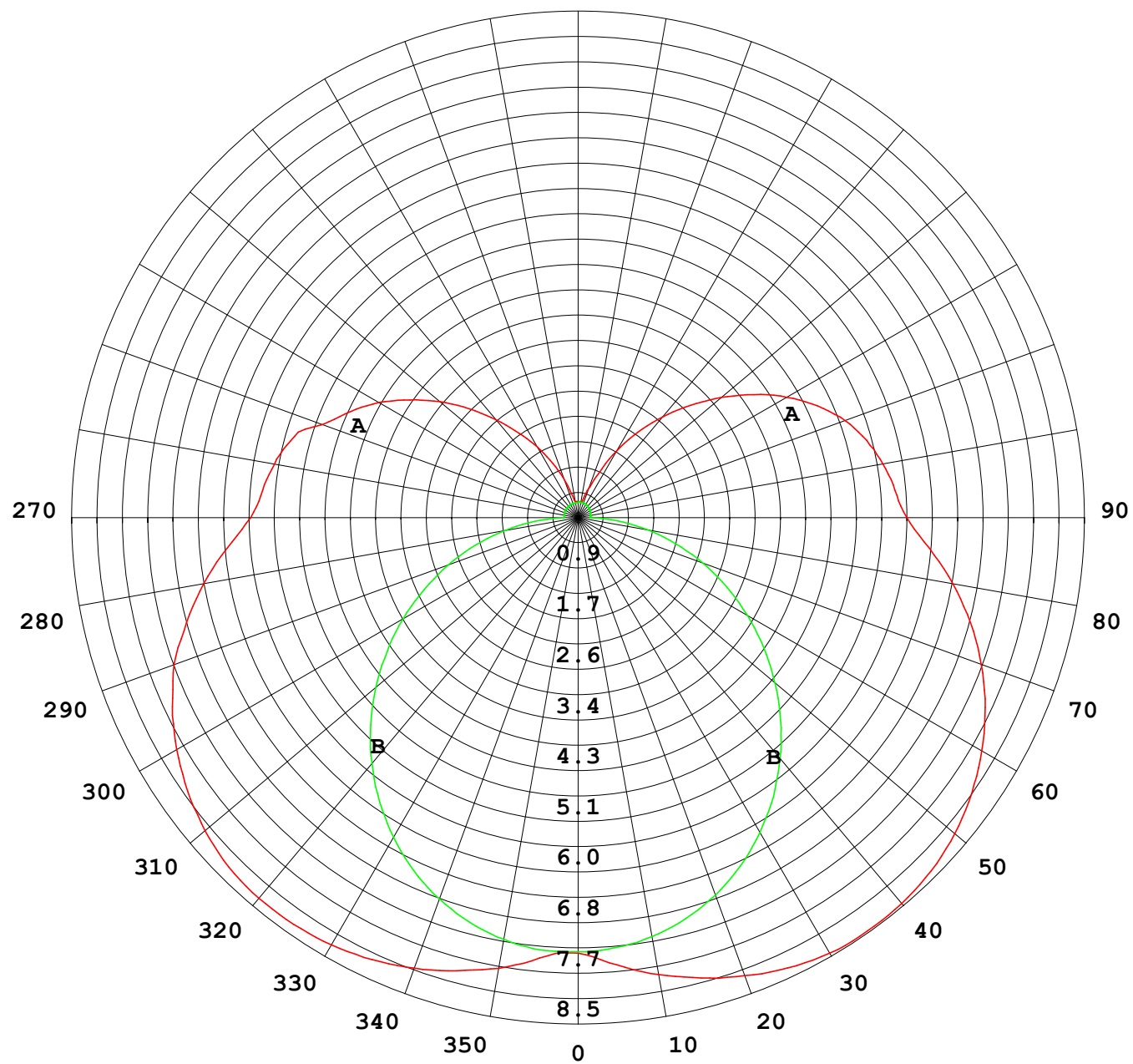
UNIT: cd

C (DEG) γ (DEG)		0	22.5	45	67.5	90	112.5	135	157.5	180	202.5	225	247.5	270	292.5	315	337.5			
0	7.31	7.31	7.31	7.31	7.31	7.31	7.31	7.31	7.31	7.31	7.31	7.31	7.31	7.31	7.31	7.31	7.31			
5	7.41	7.43	7.32	7.29	7.30	7.36	7.44	7.50	7.53	7.49	7.43	7.34	7.26	7.27	7.27	7.34	7.37			
10	7.67	7.66	7.46	7.27	7.21	7.36	7.58	7.73	7.78	7.70	7.57	7.36	7.16	7.24	7.24	7.47	7.60			
15	7.87	7.82	7.57	7.24	7.05	7.32	7.66	7.91	8.00	7.88	7.65	7.34	6.99	7.19	7.19	7.56	7.75			
20	8.04	7.97	7.59	7.15	6.83	7.23	7.71	8.06	8.17	8.02	7.66	7.23	6.76	7.10	7.10	7.55	7.89			
25	8.18	8.07	7.59	7.00	6.55	7.08	7.71	8.16	8.33	8.13	7.63	7.06	6.47	6.93	7.10	7.53	7.97			
30	8.27	8.11	7.55	6.80	6.22	6.86	7.68	8.22	8.44	8.19	7.58	6.85	6.12	6.70	7.10	7.46	8.02			
35	8.32	8.11	7.44	6.54	5.83	6.61	7.57	8.21	8.46	8.20	7.48	6.57	5.74	6.44	7.10	7.33	8.03			
40	8.33	8.07	7.30	6.25	5.40	6.31	7.42	8.16	8.45	8.17	7.31	6.27	5.29	6.12	7.10	7.18	8.01			
45	8.29	7.97	7.11	5.91	4.94	5.97	7.20	8.05	8.38	8.06	7.11	5.93	4.82	5.78	6.98	6.98	7.92			
50	8.17	7.82	6.87	5.55	4.45	5.59	6.94	7.88	8.25	7.90	6.85	5.55	4.33	5.40	6.76	6.76	7.76			
55	8.00	7.62	6.59	5.16	3.93	5.19	6.65	7.66	8.06	7.68	6.56	5.15	3.82	5.01	6.46	6.46	7.56			
60	7.78	7.37	6.26	4.74	3.40	4.76	6.30	7.38	7.82	7.42	6.23	4.73	3.30	4.61	6.15	6.15	7.33			
65	7.51	7.07	5.91	4.31	2.86	4.30	5.91	7.06	7.54	7.11	5.86	4.28	2.76	4.19	5.81	5.81	7.04			
70	7.21	6.75	5.51	3.85	2.32	3.83	5.49	6.71	7.20	6.76	5.46	3.83	2.24	3.75	5.40	5.40	6.69			
75	6.80	6.36	5.09	3.38	1.78	3.34	5.05	6.31	6.81	6.37	5.04	3.35	1.70	3.27	4.98	4.98	6.32			
80	6.38	5.93	4.67	2.90	1.25	2.84	4.59	5.86	6.38	5.93	4.59	2.87	1.19	2.79	4.55	4.55	5.89			
85	5.91	5.44	4.19	2.44	0.74	2.34	4.10	5.38	5.92	5.46	4.11	2.38	0.67	2.32	4.09	4.09	5.44			
90	5.50	5.03	3.76	1.99	0.25	1.92	3.71	4.99	5.52	5.08	3.73	1.98	0.21	1.91	3.68	3.68	5.02			
95	5.31	4.85	3.62	1.93	0.24	1.87	3.60	4.83	5.34	4.92	3.62	1.92	0.21	1.86	3.56	3.56	4.84			
100	5.17	4.72	3.52	1.60	0.24	1.79	3.50	4.70	5.19	4.79	3.52	1.85	0.21	1.11	3.46	3.46	4.73			
105	4.99	4.50	3.11	1.36	0.24	1.64	3.37	4.53	5.01	4.62	3.39	1.68	0.22	1.09	3.11	3.11	4.52			
110	4.57	4.05	2.83	1.23	0.25	1.45	3.16	4.30	4.77	4.38	3.16	1.48	0.22	1.04	2.45	2.45	4.13			
115	4.21	3.76	2.56	1.09	0.25	1.25	2.88	3.99	4.44	4.06	2.87	1.29	0.23	1.02	2.24	2.24	3.29			
120	3.87	3.41	2.31	0.91	0.25	1.06	2.56	3.62	4.04	3.68	2.55	1.09	0.23	0.92	2.13	2.13	3.10			
125	3.44	3.04	1.99	0.79	0.25	0.85	2.24	3.21	3.60	3.26	2.22	0.87	0.24	0.75	1.78	1.78	2.78			
130	3.03	2.66	1.63	0.66	0.25	0.67	1.91	2.78	3.14	2.82	1.90	0.69	0.24	0.61	1.43	1.43	2.53			
135	2.59	2.30	1.35	0.54	0.25	0.51	1.58	2.36	2.67	2.40	1.56	0.54	0.25	0.49	1.21	1.21	2.11			
140	2.14	1.90	1.05	0.43	0.25	0.37	1.25	1.93	2.21	1.97	1.24	0.40	0.25	0.39	0.98	0.98	1.74			
145	1.73	1.36	0.82	0.34	0.25	0.27	0.94	1.51	1.75	1.55	0.92	0.30	0.26	0.32	0.75	0.75	1.33			
150	1.37	0.98	0.63	0.27	0.25	0.26	0.68	1.09	1.29	1.13	0.67	0.26	0.26	0.27	0.55	0.55	0.98			
155	1.00	0.68	0.47	0.27	0.25	0.26	0.46	0.75	0.82	0.78	0.44	0.26	0.26	0.26	0.40	0.40	0.68			
160	0.67	0.46	0.34	0.27	0.25	0.26	0.30	0.46	0.54	0.49	0.27	0.26	0.26	0.26	0.30	0.30	0.46			
165	0.40	0.30	0.27	0.27	0.25	0.26	0.28	0.27	0.29	0.29	0.27	0.26	0.26	0.26	0.27	0.27	0.31			
170	0.27	0.27	0.27	0.27	0.25	0.26	0.28	0.28	0.27	0.27	0.27	0.26	0.26	0.26	0.27	0.27	0.28			
175	0.27	0.27	0.27	0.27	0.25	0.26	0.28	0.28	0.27	0.27	0.27	0.26	0.26	0.26	0.27	0.27	0.28			
180	0.27	0.27	0.27	0.27	0.25	0.26	0.28	0.28	0.27	0.27	0.27	0.26	0.26	0.26	0.26	0.26	0.28			

C Range: 0 - 360DEG
C Interval: 22.5DEG
Test Speed: HIGH
Temperature:25.3℃
Operators:Cloud
Test Date:2024-10-15

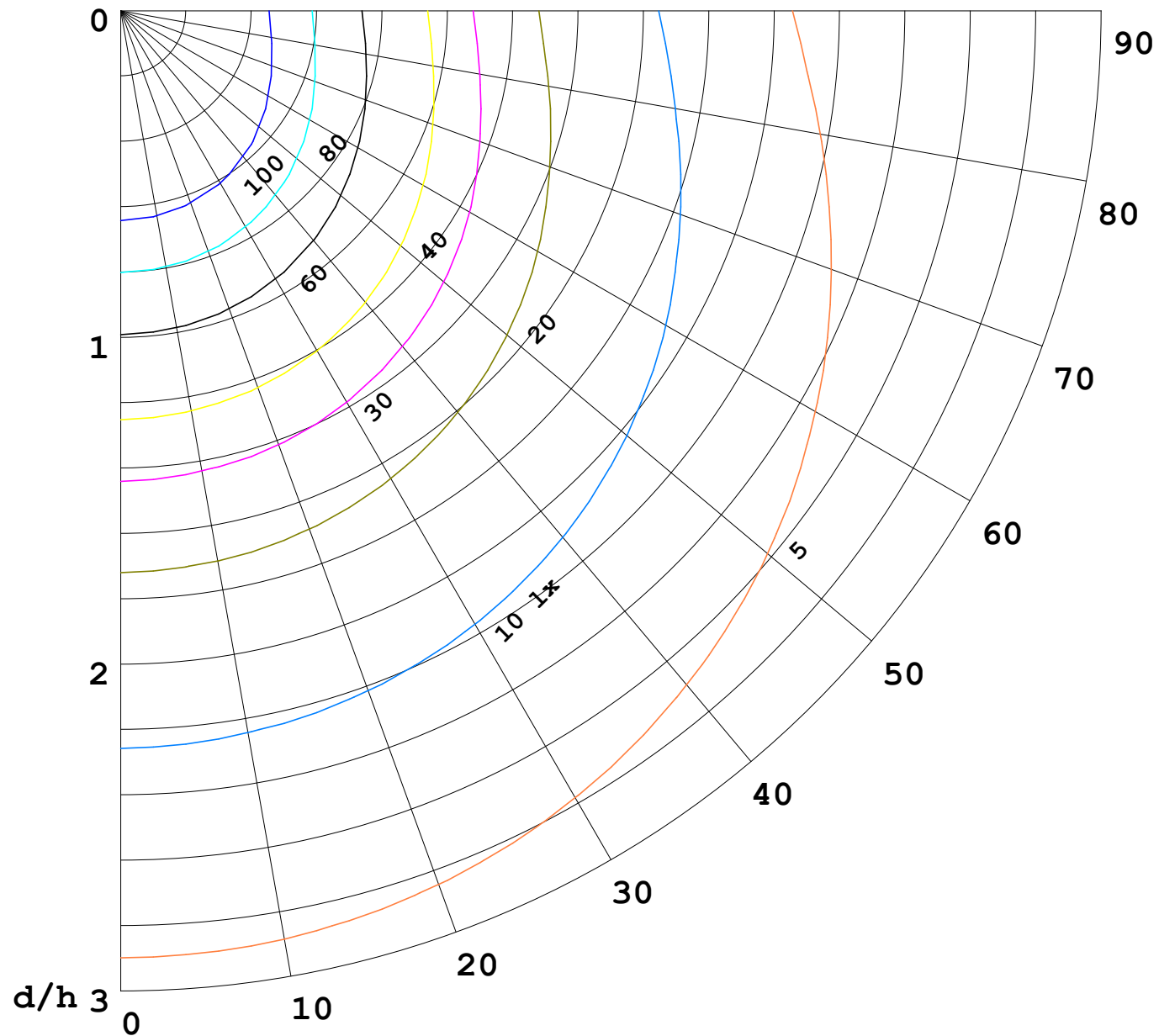
γ Range: 0 - 180DEG
γ Interval: 1.0DEG
Test System:EVERFINE GO-2000B_V1 SYSTEM V2.00.488
Humidity:65.0%
Test Distance:6.360m [K=1.0000]
Remarks: BLUE

I (cd)



1000 lm

$\kappa = 1$



F = 1000 lm
 K = 0.7
 Hcc = 0.8 m
 Hfc = 0.0 m
 Eave = 100 lx

	Pcc	Pw	Pfc
—————	70	50	30
—————	50	30	20

