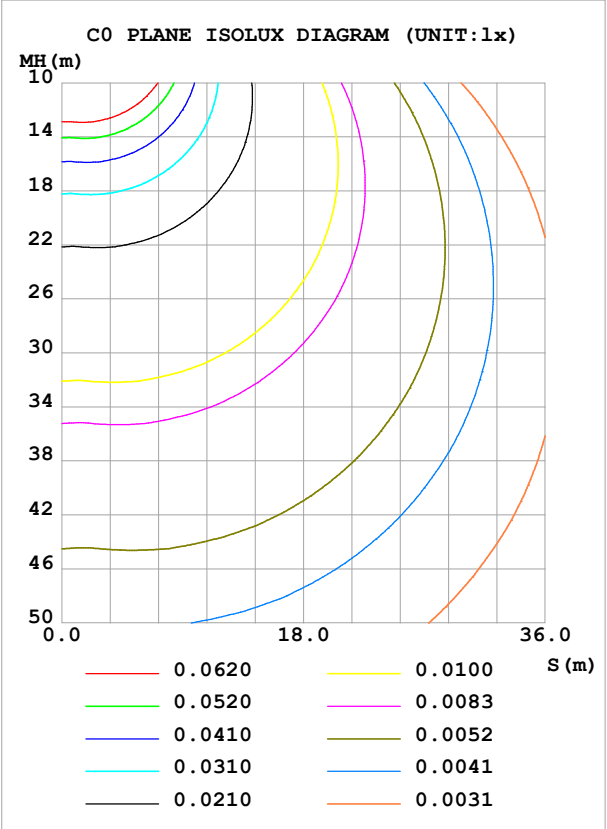
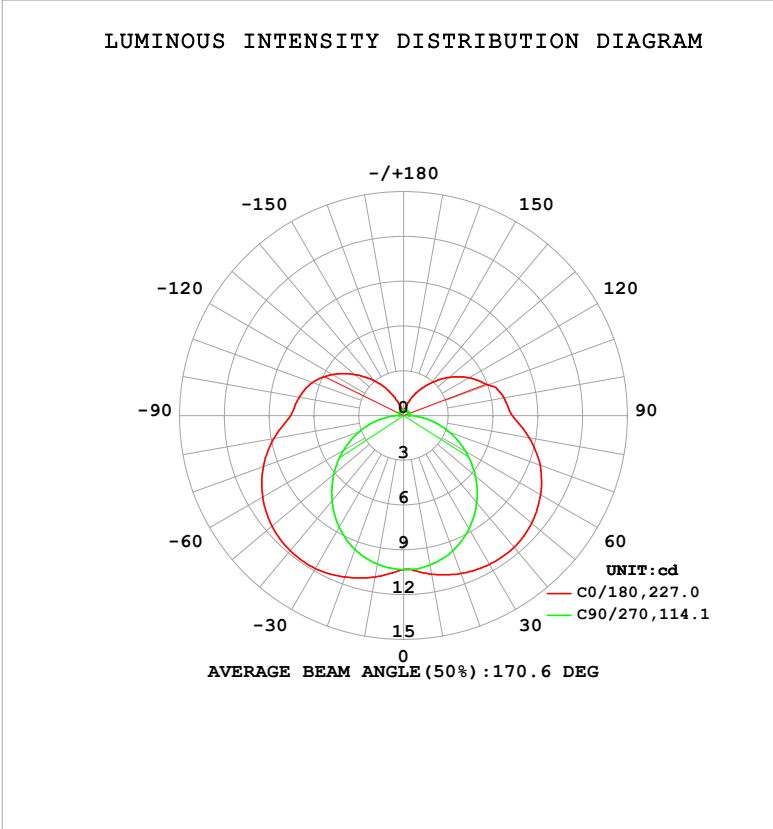


LUMINAIRE PHOTOMETRIC TEST REPORT

Test:U:24.00V I:0.1425A P:3.420W PF:1.000 Freq:0Hz Lamp Flux:68.439x1 lm		
NAME: SF18-24V-5050-72-RGBW(2700K)-80	TYPE:	WEIGHT:
SPEC.:	DIM.: Length=1m	SERIAL No.:
MFR.:	SUR.:	Shielding Angle:

DATA OF LAMP		PHOTOMETRIC DATA				Eff: 20.01 lm/W
MODEL		Imax (cd)	11.86	S/MH(C0/180)	1.72	
NOMINAL POWER(W)		LOR(%)	100.0	S/MH(C90/270)	1.25	
RATED VOLTAGE(V)		TOTAL FLUX(lm)	68.439	η UP,DN(C0-180)	12.9,37.2	
NOMINAL FLUX(lm)	68.439	CIE CLASS	SEMI-D.	η UP,DN(C180-360)	12.8,37.1	
LAMPS INSIDE	1	η up (%)	25.7	CIBSE SHR NOM	1.50	
TEST VOLTAGE(V)		η down (%)	74.3	CIBSE SHR MAX	1.55	



C Range: 0 - 360DEG	γ Range: 0 - 180DEG
C Interval: 22.5DEG	γ Interval: 1.0DEG
Test Speed: HIGH	Test System:EVERFINE GO-2000B_V1 SYSTEM V2.00.488
Temperature:25.3℃	Humidity:65.0%
Operators:Cloud	Test Distance:6.360m [K=1.0000]
Test Date:2024-10-15	Remarks: RED

ZONAL FLUX DIAGRAM

ZONAL FLUX DIAGRAM:

γ	C0	C45	C90	C135	C180	C225	C270	C315	γ	Φ zone	Φ total	%lum, lamp
10	10.80	10.52	10.17	10.72	10.97	10.67	10.11	10.53	0- 10	0.9995	0.9995	1.46,1.46
20	11.26	10.67	9.640	10.89	11.50	10.80	9.534	10.61	10- 20	3.012	4.012	5.86,5.86
30	11.51	10.56	8.770	10.81	11.84	10.67	8.635	10.43	20- 30	4.887	8.899	13,13
40	11.52	10.17	7.623	10.43	11.83	10.27	7.463	9.992	30- 40	6.418	15.32	22.4,22.4
50	11.21	9.509	6.273	9.743	11.52	9.613	6.110	9.342	40- 50	7.444	22.76	33.3,33.3
60	10.59	8.612	4.801	8.811	10.90	8.708	4.650	8.462	50- 60	7.867	30.63	44.8,44.8
70	9.756	7.519	3.283	7.645	9.999	7.617	3.167	7.371	60- 70	7.673	38.30	56,56
80	8.533	6.290	1.774	6.353	8.823	6.371	1.692	6.153	70- 80	6.897	45.20	66,66
90	7.290	4.989	0.3538	5.100	7.583	5.140	0.3151	4.896	80- 90	5.667	50.87	74.3,74.3
100	6.836	4.662	0.3469	4.796	7.110	4.846	0.3122	4.587	90-100	4.827	55.69	81.4,81.4
110	6.025	3.751	0.3700	4.315	6.508	4.332	0.3267	3.219	100-110	4.214	59.91	87.5,87.5
120	5.094	3.079	0.3701	3.516	5.519	3.515	0.3412	2.793	110-120	3.329	63.24	92.4,92.4
130	3.993	2.183	0.3730	2.633	4.288	2.627	0.3499	1.962	120-130	2.388	65.62	95.9,95.9
140	2.851	1.423	0.3730	1.741	3.042	1.738	0.3672	1.335	130-140	1.512	67.14	98.1,98.1
150	1.845	0.8803	0.3730	0.9587	1.805	0.9569	0.3788	0.7758	140-150	0.7992	67.94	99.3,99.3
160	0.9373	0.4906	0.3730	0.4245	0.7223	0.4123	0.3816	0.4356	150-160	0.3423	68.28	99.8,99.8
170	0.3988	0.3952	0.3730	0.3953	0.3873	0.3981	0.3816	0.3924	160-170	0.1238	68.40	99.9,99.9
180	0.3902	0.3952	0.3787	0.3953	0.3873	0.3981	0.3816	0.3895	170-180	0.0373	68.44	100,100
DEG	LUMINOUS INTENSITY:cd									UNIT:lm		

Conical surface Flux(90deg): 18.947 lm

%lum = 27.7%

%lamp = 27.7%

Conical surface Flux(130deg): 34.526 lm

%lum = 50.4%

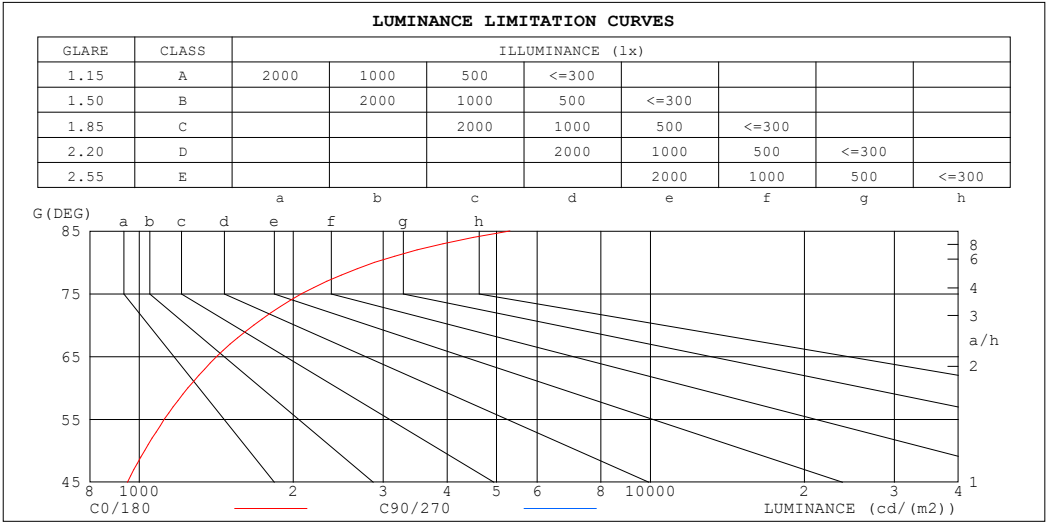
%lamp = 50.4%

C Range: 0 - 360DEG
 C Interval: 22.5DEG
 Test Speed: HIGH
 Temperature:25.3℃
 Operators:Cloud
 Test Date:2024-10-15

γ Range: 0 - 180DEG
 γ Interval: 1.0DEG
 Test System:EVERFINE GO-2000B_V1 SYSTEM V2.00.488
 Humidity:65.0%
 Test Distance:6.360m [K=1.0000]
 Remarks: RED

LUMINANCE LIMITATION CURVES

Test:U:24.00V I:0.1425A P:3.420W PF:1.000 Freq:0Hz Lamp Flux:68.439x1 lm		
NAME: SF18-24V-5050-72-RGBW(2700K)-80	TYPE:	WEIGHT:
SPEC.:	DIM.: Length=1m	SERIAL No.:
MFR.:	SUR.:	Shielding Angle:



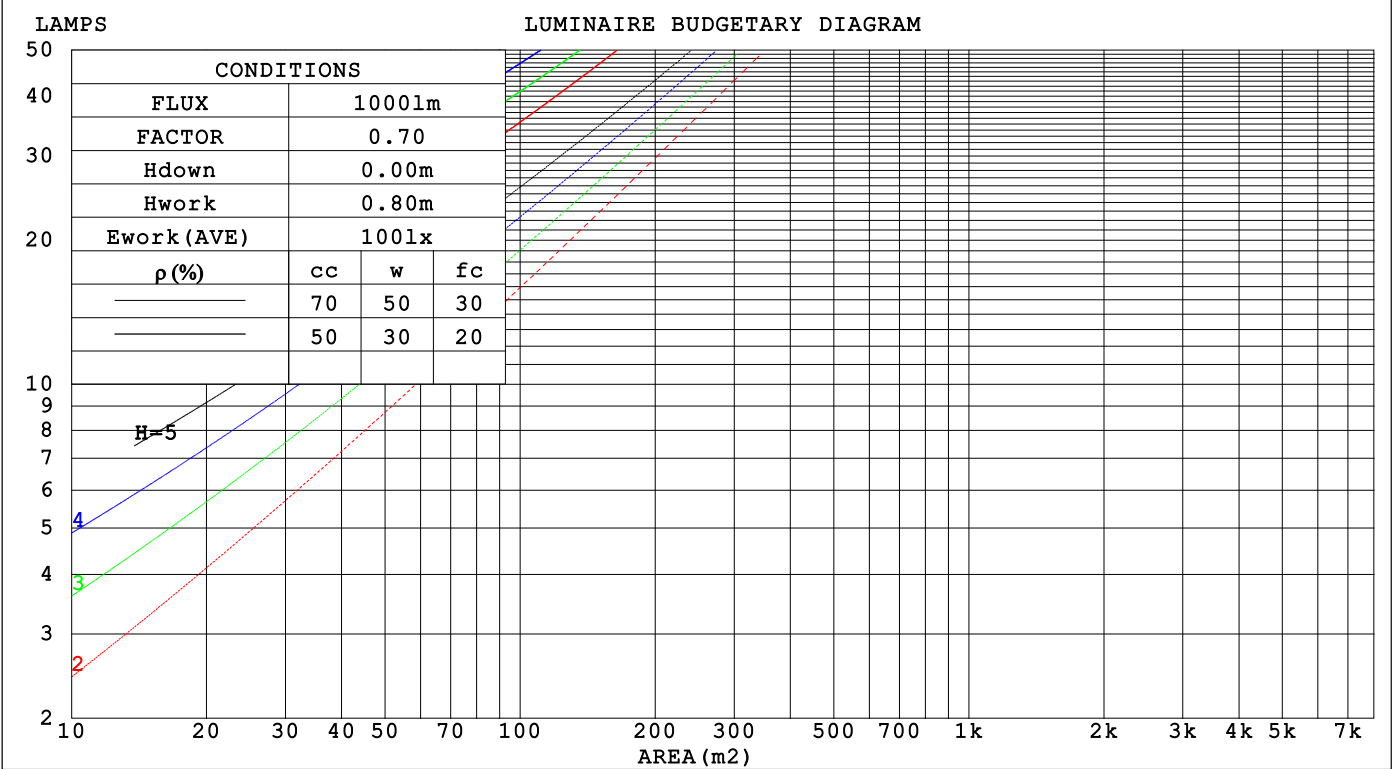
LUMINANCE cd/(m2)		
G (DEG)	C0/180	C90/270
85	5311	693
80	2887	600
75	2078	572
70	1675	564
65	1418	561
60	1244	564
55	1119	568
50	1024	573
45	947	579

C Range: 0 - 360DEG	γ Range: 0 - 180DEG
C Interval: 22.5DEG	γ Interval: 1.0DEG
Test Speed: HIGH	Test System:EVERFINE GO-2000B_V1 SYSTEM V2.00.488
Temperature:25.3℃	Humidity:65.0%
Operators:Cloud	Test Distance:6.360m [K=1.0000]
Test Date:2024-10-15	Remarks: RED

CU AND LUMINAIRE BUDGETARY ESTIMATE DIAGRAM

Test:U:24.00V I:0.1425A P:3.420W PF:1.000 Freq:0Hz		
Lamp Flux:68.439x1 lm		
NAME: SF18-24V-5050-72-RGBW(2700K)-80	TYPE:	WEIGHT:
SPEC.:	DIM.: Length=1m	SERIAL No.:
MFR.:	SUR.:	Shielding Angle:

pcc	80%			70%			50%			30%			10%			0
ρw	50%	30%	10%	50%	30%	10%	50%	30%	10%	50%	30%	10%	50%	30%	10%	0
ρfc	20%			20%			20%			20%			20%			0
RCR	RCR:Room Cavity Ratio			Coefficients of Utilization(CU)												
0.0	1.13	1.13	1.13	1.07	1.07	1.07	.97	.97	.97	.87	.87	.87	.78	.78	.78	.74
1.0	.93	.87	.82	.88	.83	.79	.79	.75	.71	.71	.68	.65	.63	.61	.58	.54
2.0	.79	.71	.64	.75	.68	.61	.67	.61	.56	.60	.55	.51	.53	.49	.46	.42
3.0	.68	.59	.52	.65	.56	.49	.58	.51	.45	.52	.46	.41	.46	.41	.37	.34
4.0	.60	.50	.43	.56	.48	.41	.51	.43	.38	.45	.39	.34	.40	.35	.31	.28
5.0	.53	.43	.36	.50	.41	.34	.45	.37	.32	.40	.34	.29	.36	.31	.26	.24
6.0	.47	.37	.31	.45	.36	.30	.40	.33	.27	.36	.30	.25	.32	.27	.23	.20
7.0	.42	.33	.27	.40	.32	.26	.36	.29	.24	.33	.26	.22	.29	.24	.20	.17
8.0	.38	.29	.23	.36	.28	.23	.33	.26	.21	.30	.24	.19	.27	.21	.18	.15
9.0	.35	.26	.21	.33	.25	.20	.30	.23	.19	.27	.21	.17	.25	.19	.16	.14
10.0	.32	.24	.18	.30	.23	.18	.28	.21	.17	.25	.19	.15	.23	.18	.14	.12



C Range: 0 - 360DEG
C Interval: 22.5DEG
Test Speed: HIGH
Temperature:25.3℃
Operators:Cloud
Test Date:2024-10-15

γ Range: 0 - 180DEG
γ Interval: 1.0DEG
Test System:EVERFINE GO-2000B_V1 SYSTEM V2.00.488
Humidity:65.0%
Test Distance:6.360m [K=1.0000]
Remarks: RED

WEC AND CCEC

Test:U:24.00V I:0.1425A P:3.420W PF:1.000 Freq:0Hz Lamp Flux:68.439x1 lm					
NAME: SF18-24V-5050-72-RGBW(2700K)-80			TYPE:		WEIGHT:
SPEC.:			DIM.: Length=1m		SERIAL No.:
MFR.:			SUR.:		Shielding Angle:

pcc	80%			70%			50%			30%			10%			0
pw	50%	30%	10%	50%	30%	10%	50%	30%	10%	50%	30%	10%	50%	30%	10%	0
pfc	20%			20%			20%			20%			20%			0
RCR	RCR:Room Cavity Ratio						Wall Exitance Coefficients(WEC)									
0.0																
1.0	.400	.228	.072	.385	.220	.070	.357	.205	.065	.331	.191	.061	.307	.178	.057	
2.0	.342	.188	.058	.329	.181	.056	.303	.169	.052	.279	.157	.049	.258	.146	.046	
3.0	.302	.161	.048	.290	.155	.047	.266	.144	.044	.245	.134	.041	.225	.125	.039	
4.0	.271	.141	.041	.259	.136	.040	.238	.126	.038	.219	.117	.035	.200	.109	.033	
5.0	.245	.125	.036	.235	.121	.035	.216	.112	.033	.198	.104	.031	.181	.097	.029	
6.0	.224	.112	.032	.215	.108	.031	.197	.101	.029	.180	.094	.028	.165	.087	.026	
7.0	.206	.102	.029	.198	.098	.028	.181	.092	.026	.166	.085	.025	.152	.079	.023	
8.0	.191	.093	.026	.183	.090	.025	.168	.084	.024	.154	.078	.022	.141	.072	.021	
9.0	.178	.086	.024	.170	.083	.023	.157	.077	.022	.143	.072	.021	.131	.067	.019	
10.0	.166	.080	.022	.159	.077	.021	.146	.072	.020	.134	.067	.019	.123	.062	.018	

pcc	80%			70%			50%			30%			10%			0
pw	50%	30%	10%	50%	30%	10%	50%	30%	10%	50%	30%	10%	50%	30%	10%	0
pfc	20%			20%			20%			20%			20%			0
RCR	RCR:Room Cavity Ratio						Ceiling Cavity Exitance Coefficients (CCEC)									
0.0	.386	.386	.386	.330	.330	.330	.225	.225	.225	.129	.129	.129	.041	.041	.041	
1.0	.384	.353	.324	.328	.303	.279	.225	.208	.193	.129	.120	.112	.041	.039	.036	
2.0	.378	.330	.290	.323	.284	.251	.222	.197	.175	.128	.114	.103	.041	.037	.033	
3.0	.370	.314	.269	.317	.271	.234	.218	.188	.164	.126	.110	.097	.040	.036	.032	
4.0	.363	.302	.256	.311	.261	.222	.214	.182	.156	.124	.107	.093	.040	.035	.030	
5.0	.355	.292	.246	.305	.253	.214	.210	.177	.151	.122	.104	.090	.039	.034	.030	
6.0	.348	.285	.239	.299	.247	.209	.206	.173	.148	.120	.102	.088	.039	.033	.029	
7.0	.341	.278	.235	.293	.241	.204	.202	.169	.145	.118	.100	.086	.038	.033	.029	
8.0	.334	.273	.231	.287	.237	.201	.199	.166	.143	.116	.098	.085	.037	.032	.028	
9.0	.328	.268	.228	.282	.233	.199	.196	.164	.141	.114	.097	.084	.037	.032	.028	
10.0	.322	.264	.226	.277	.229	.197	.192	.161	.140	.112	.095	.083	.036	.031	.028	

C Range: 0 - 360DEG
C Interval: 22.5DEG
Test Speed: HIGH
Temperature:25.3℃
Operators:Cloud
Test Date:2024-10-15

γ Range: 0 - 180DEG
γ Interval: 1.0DEG
Test System:EVERFINE GO-2000B_V1 SYSTEM V2.00.488
Humidity:65.0%
Test Distance:6.360m [K=1.0000]
Remarks: RED

UGR(Unified Glare Rating) Table

Test:U:24.00V I:0.1425A P:3.420W PF:1.000 Freq:0Hz Lamp Flux:68.439x1 lm										
NAME: SF18-24V-5050-72-RGBW(2700K)-80					TYPE:			WEIGHT:		
SPEC.:					DIM.: Length=1m			SERIAL No.:		
MFR.:					SUR.:			Shielding Angle:		
ceiling/cavity	0.7	0.7	0.5	0.5	0.3	0.7	0.7	0.5	0.5	0.3
walls	0.5	0.3	0.5	0.3	0.3	0.5	0.3	0.5	0.3	0.3
working plane	0.2	0.2	0.2	0.2	0.2	0.2	0.2	0.2	0.2	0.2
Room dimensions	Viewed crosswise					Viewed endwise				
x = 2H y = 2H	21.6	23.0	22.2	23.6	24.3	18.7	20.0	19.3	20.6	21.3
3H	24.6	25.8	25.2	26.4	27.2	20.4	21.6	21.0	22.3	23.0
4H	26.1	27.3	26.8	28.0	28.7	21.2	22.3	21.8	23.0	23.8
6H	27.9	28.9	28.5	29.6	30.4	21.9	22.9	22.5	23.6	24.4
8H	28.8	29.9	29.5	30.6	31.4	22.1	23.2	22.8	23.9	24.7
12H	29.9	30.9	30.6	31.6	32.4	22.4	23.4	23.1	24.1	24.9
4H 2H	22.2	23.4	22.9	24.0	24.8	20.2	21.3	20.8	22.0	22.8
3H	25.4	26.4	26.1	27.1	27.9	22.2	23.2	22.9	23.9	24.7
4H	27.2	28.1	27.9	28.8	29.7	23.2	24.1	23.9	24.8	25.7
6H	29.1	29.9	29.8	30.7	31.6	24.1	24.9	24.8	25.6	26.5
8H	30.2	30.9	30.9	31.7	32.6	24.4	25.2	25.2	26.0	26.9
12H	31.4	32.1	32.1	32.9	33.8	24.7	25.4	25.5	26.2	27.1
8H 4H	27.5	28.3	28.3	29.0	29.9	24.5	25.3	25.2	26.0	26.9
6H	29.8	30.4	30.5	31.2	32.1	25.8	26.4	26.5	27.2	28.1
8H	31.1	31.6	31.8	32.4	33.4	26.4	26.9	27.1	27.7	28.7
12H	32.5	33.0	33.3	33.9	34.8	26.9	27.4	27.7	28.2	29.2
12H 4H	27.5	28.3	28.3	29.0	29.9	24.9	25.6	25.7	26.4	27.3
6H	29.9	30.5	30.7	31.3	32.2	26.4	27.0	27.2	27.8	28.8
8H	31.3	31.8	32.1	32.6	33.6	27.2	27.7	28.0	28.5	29.5
Variations with the observer position at spacings(CIE Pub.117):										
S = 1.0H	+ 0.1 / - 0.1					+ 0.1 / - 0.1				
1.5H	+ 0.2 / - 0.3					+ 0.2 / - 0.3				
2.0H	+ 0.3 / - 0.4					+ 0.3 / - 0.5				

CIE Pub.117, 68.44 lm Total Lamp Luminous Flux Correct (8log(F/F0) = -9.3)
Area: 0.017 m2

C Range: 0 - 360DEG
C Interval: 22.5DEG
Test Speed: HIGH
Temperature:25.3℃
Operators:Cloud
Test Date:2024-10-15

γ Range: 0 - 180DEG
γ Interval: 1.0DEG
Test System:EVERFINE GO-2000B_V1 SYSTEM V2.00.488
Humidity:65.0%
Test Distance:6.360m [K=1.0000]
Remarks: RED

UTILIZATION FACTORS TABLE

Test:U:24.00V I:0.1425A P:3.420W PF:1.000 Freq:0Hz Lamp Flux:68.439x1 lm		
NAME: SF18-24V-5050-72-RGBW(2700K)-80	TYPE:	WEIGHT:
SPEC.:	DIM.: Length=1m	SERIAL No.:
MFR.:	SUR.:	Shielding Angle:

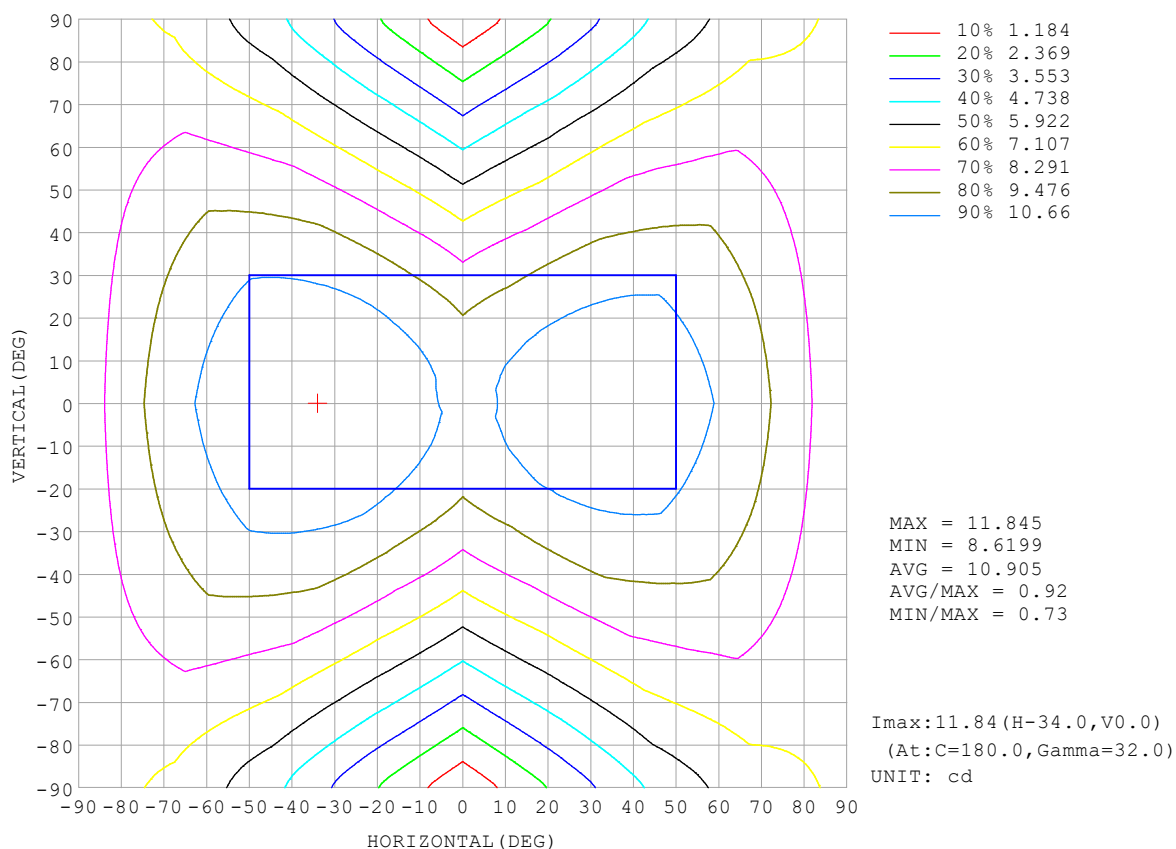
REFLECTANCE										
Ceiling	0.8	0.8	0.8	0.7	0.7	0.7	0.5	0.5	0.5	0
Walls	0.7	0.5	0.3	0.7	0.5	0.3	0.7	0.5	0.3	0
Working plane	0.2	0.2	0.2	0.2	0.2	0.2	0.2	0.2	0.2	0
ROOM INDEX	UTILIZATION FACTORS (PERCENT) $k(RI) \times RCR = 5$									
$k = 0.60$	44	31	24	43	31	23	40	29	23	16
0.80	53	39	31	51	38	31	48	37	30	21
1.00	60	47	38	58	46	37	54	46	36	26
1.25	67	54	45	65	52	44	60	49	42	31
1.50	73	60	51	69	58	49	64	54	47	35
2.00	80	68	59	77	66	58	70	61	54	41
2.50	85	74	65	81	71	63	74	66	59	45
3.00	89	79	71	85	76	68	77	70	64	48
4.00	94	85	78	89	82	75	81	75	69	53
5.00	97	89	83	92	85	80	83	78	73	56
ROOM INDEX	UF (total)									Direct
According to DIN EN 13032-2 2004			Suspended					SHRNOM = 1.25		

C Range: 0 - 360DEG
 C Interval: 22.5DEG
 Test Speed: HIGH
 Temperature: 25.3°C
 Operators: Cloud
 Test Date: 2024-10-15

γ Range: 0 - 180DEG
 γ Interval: 1.0DEG
 Test System: EVERFINE GO-2000B_V1 SYSTEM V2.00.488
 Humidity: 65.0%
 Test Distance: 6.360m [K=1.0000]
 Remarks: RED

ISOCANDELA DIAGRAM

Test:U:24.00V I:0.1425A P:3.420W PF:1.000 Freq:0Hz Lamp Flux:68.439x1 lm		
NAME: SF18-24V-5050-72-RGBW(2700K)-80	TYPE:	WEIGHT:
SPEC.:	DIM.: Length=1m	SERIAL No.:
MFR.:	SUR.:	Shielding Angle:

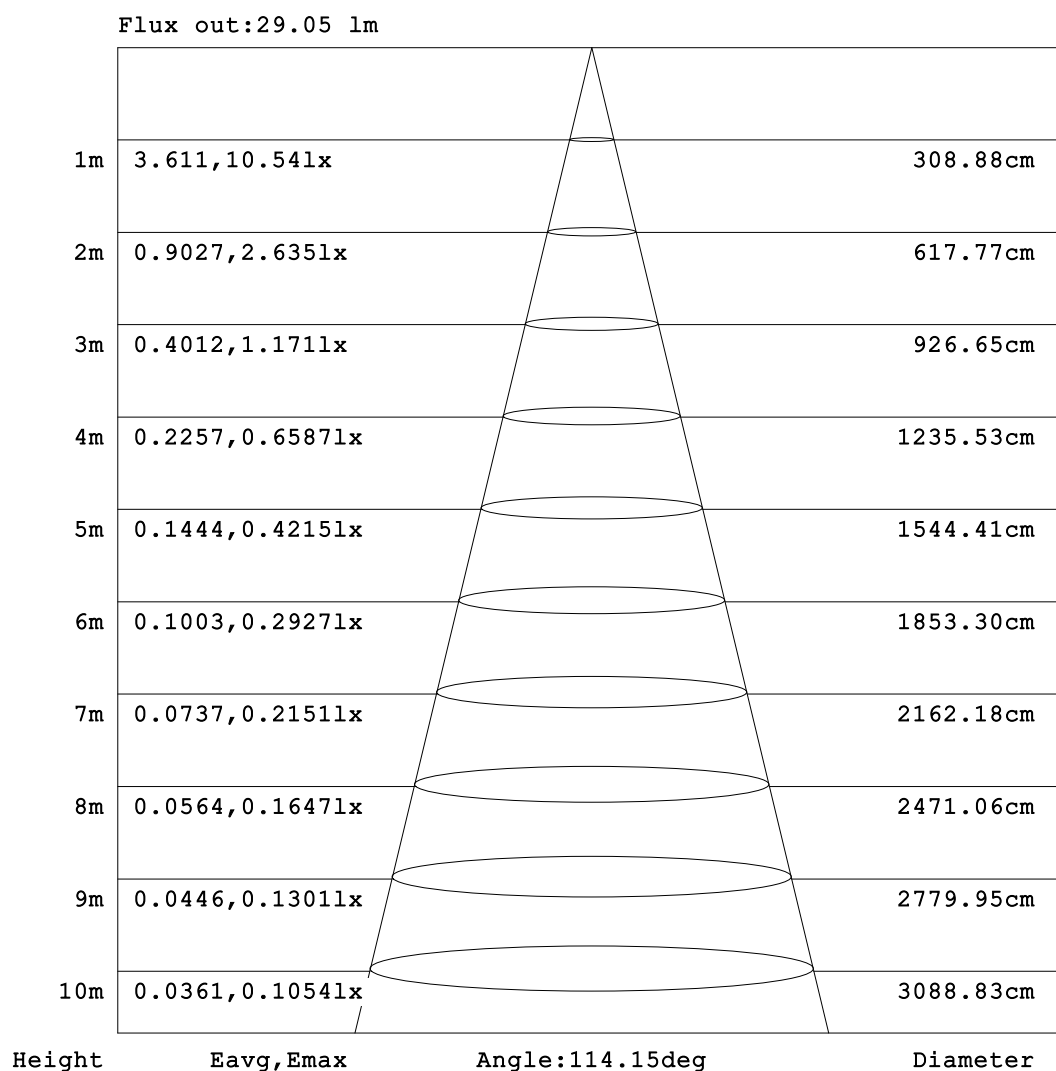


C Range: 0 - 360DEG
C Interval: 22.5DEG
Test Speed: HIGH
Temperature:25.3℃
Operators:Cloud
Test Date:2024-10-15

γ Range: 0 - 180DEG
γ Interval: 1.0DEG
Test System:EVERFINE GO-2000B_V1 SYSTEM V2.00.488
Humidity:65.0%
Test Distance:6.360m [K=1.0000]
Remarks: RED

AAI Figure

Test:U:24.00V I:0.1425A P:3.420W PF:1.000 Freq:0Hz Lamp Flux:68.439x1 lm		
NAME: SF18-24V-5050-72-RGBW(2700K)-80	TYPE:	WEIGHT:
SPEC.:	DIM.: Length=1m	SERIAL No.:
MFR.:	SUR.:	Shielding Angle:



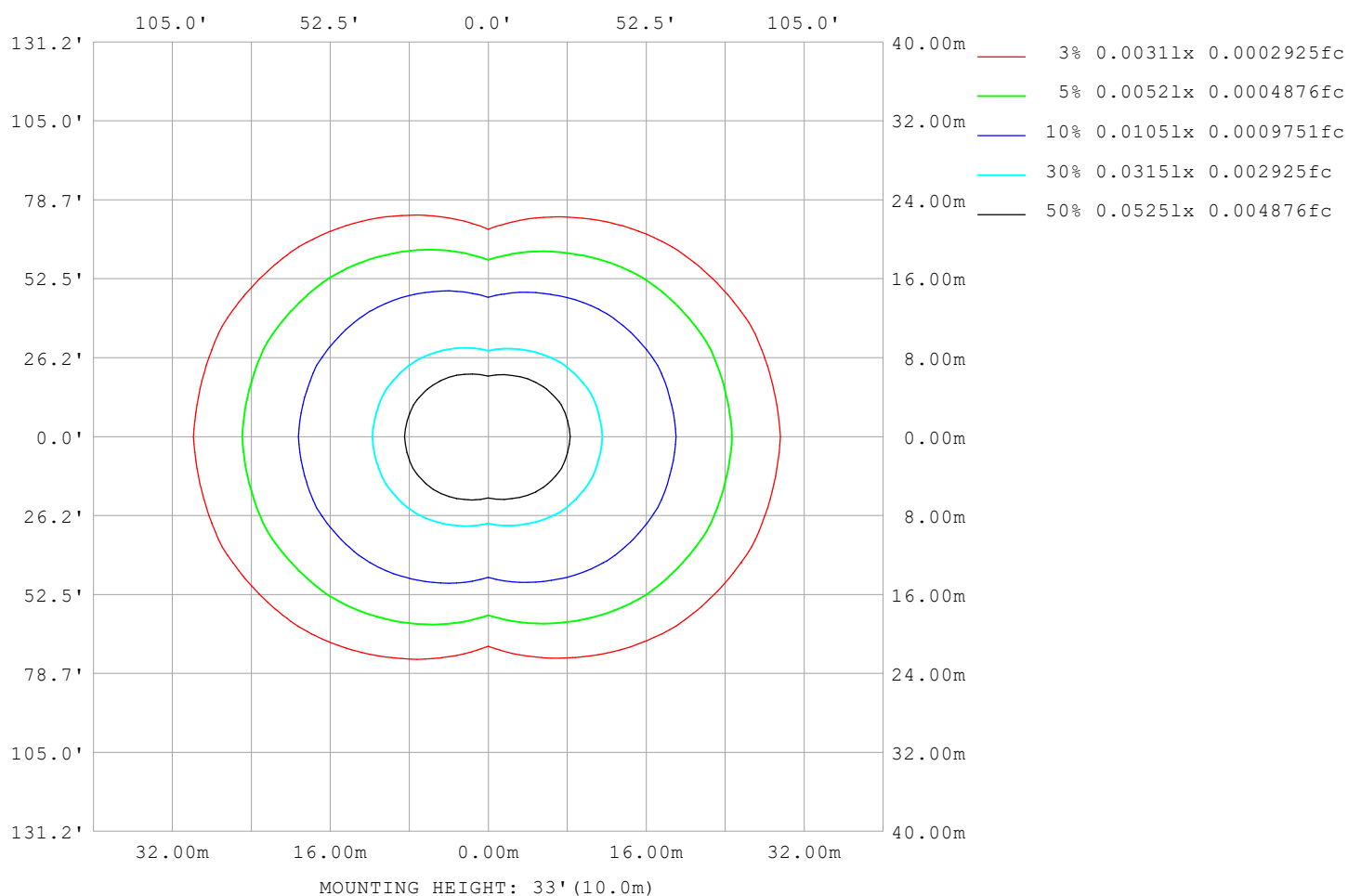
Note:The Curves indicate the illuminated area and the average illumination when the luminaire is at different distance.

C Range: 0 - 360DEG
C Interval: 22.5DEG
Test Speed: HIGH
Temperature:25.3℃
Operators:Cloud
Test Date:2024-10-15

γ Range: 0 - 180DEG
γ Interval: 1.0DEG
Test System:EVERFINE GO-2000B_V1 SYSTEM V2.00.488
Humidity:65.0%
Test Distance:6.360m [K=1.0000]
Remarks: RED

ISOLUX DIAGRAM

Test:U:24.00V I:0.1425A P:3.420W PF:1.000 Freq:0Hz Lamp Flux:68.439x1 lm		
NAME: SF18-24V-5050-72-RGBW(2700K)-80	TYPE:	WEIGHT:
SPEC.:	DIM.: Length=1m	SERIAL No.:
MFR.:	SUR.:	Shielding Angle:



C Range: 0 - 360DEG
C Interval: 22.5DEG
Test Speed: HIGH
Temperature: 25.3°C
Operators: Cloud
Test Date: 2024-10-15

γ Range: 0 - 180DEG
γ Interval: 1.0DEG
Test System: EVERFINE GO-2000B_V1 SYSTEM V2.00.488
Humidity: 65.0%
Test Distance: 6.360m [K=1.0000]
Remarks: RED

LED Avg.L Report

Test:U:24.00V I:0.1425A P:3.420W PF:1.000 Freq:0Hz Lamp Flux:68.439x1 lm		
NAME: SF18-24V-5050-72-RGBW(2700K)-80	TYPE:	WEIGHT:
SPEC.:	DIM.: Length=1m	SERIAL No.:
MFR.:	SUR.:	Shielding Angle:

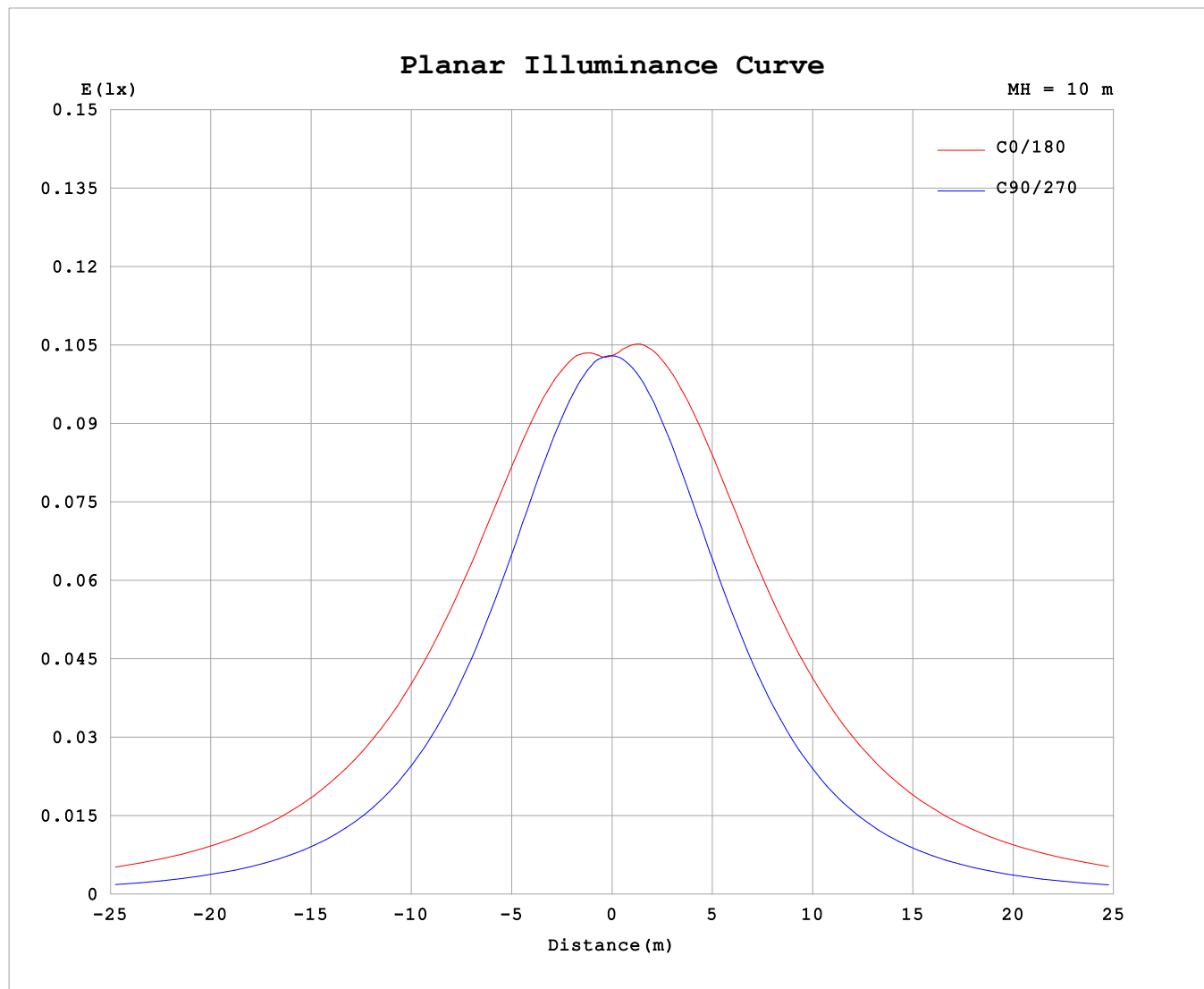
AvgL	cd/m2
L_0~180 (65) av	1439
L_0~180 (75) av	2114
L_0~180 (85) av	5410
L_90~270 (65) av	553
L_90~270 (75) av	563
L_90~270 (85) av	671
L_45 (65) av	1131
L_45 (75) av	1575
L_45 (85) av	3788

Standard: GB/T 29293-2012

C Range: 0 - 360DEG
C Interval: 22.5DEG
Test Speed: HIGH
Temperature:25.3℃
Operators:Cloud
Test Date:2024-10-15

γ Range: 0 - 180DEG
γ Interval: 1.0DEG
Test System:EVERFINE GO-2000B_V1 SYSTEM V2.00.488
Humidity:65.0%
Test Distance:6.360m [K=1.0000]
Remarks: RED

Planar Illuminance Curve



C Range: 0 - 360DEG
C Interval: 22.5DEG
Test Speed: HIGH
Temperature: 25.3 °C
Operators: Cloud
Test Date: 2024-10-15

γ Range: 0 - 180DEG
 γ Interval: 1.0DEG
Test System: EVERFINE GO-2000B_V1 SYSTEM V2.00.488
Humidity: 65.0%
Test Distance: 6.360m [K=1.0000]
Remarks: RED

LUMINOUS DISTRIBUTION INTENSITY DATA

Test:U:24.00V I:0.1425A P:3.420W PF:1.000 Freq:0Hz Lamp Flux:68.439x1 lm																	
NAME: SF18-24V-5050-72-RGBW(2700K)-80									TYPE:						WEIGHT:		
SPEC.:									DIM.: Length=1m						SERIAL No.:		
MFR.:									SUR.:						Shielding Angle:		

Table--1

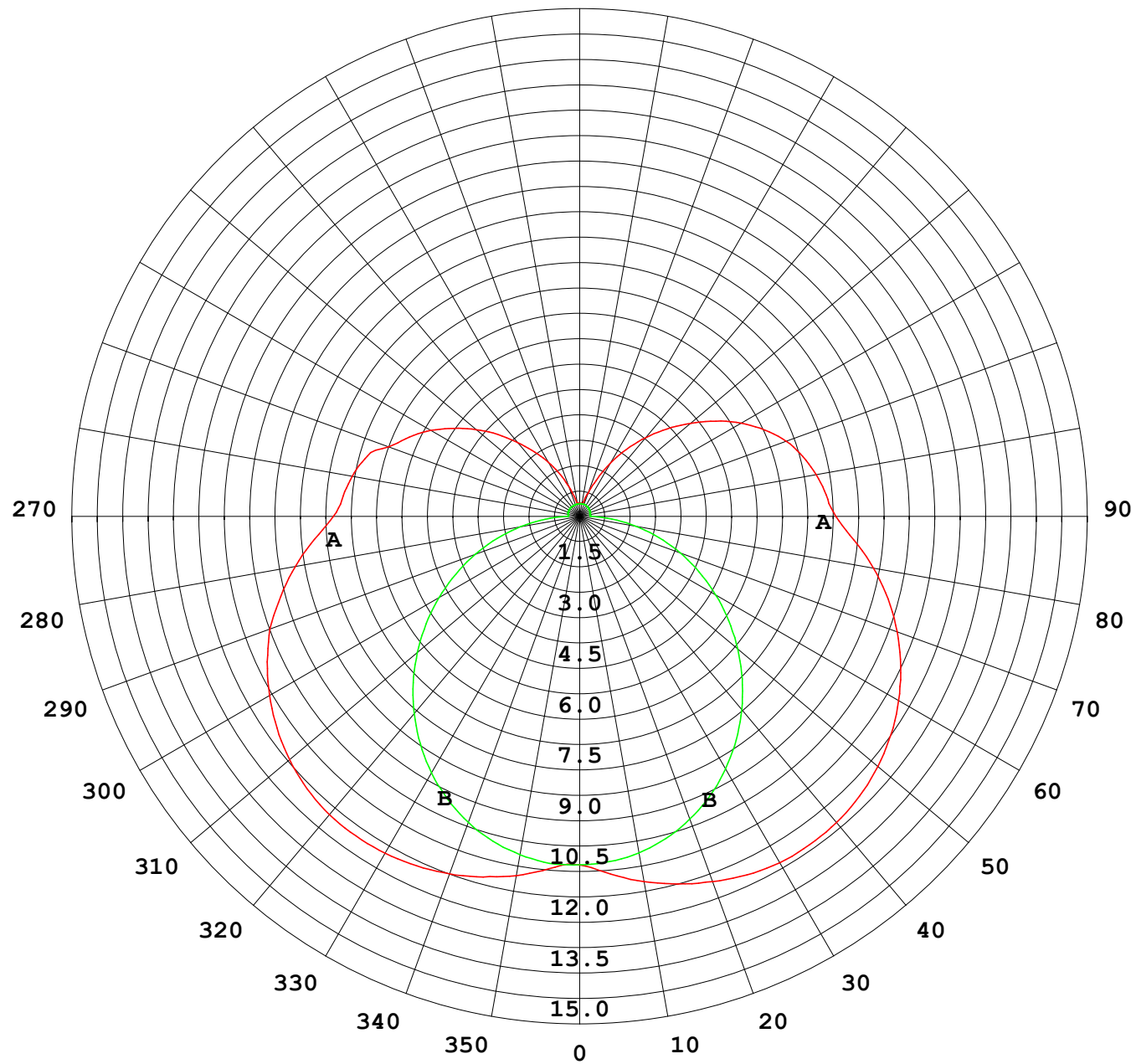
UNIT: cd

C (DEG) γ (DEG)	0	22.5	45	67.5	90	112.5	135	157.5	180	202.5	225	247.5	270	292.5	315	337.5			
0	10.3	10.3	10.3	10.3	10.3	10.3	10.3	10.3	10.3	10.3	10.3	10.3	10.3	10.3	10.3	10.3			
5	10.5	10.5	10.3	10.3	10.3	10.4	10.5	10.6	10.6	10.6	10.5	10.4	10.3	10.3	10.4	10.4			
10	10.8	10.8	10.5	10.3	10.2	10.4	10.7	10.9	11.0	10.9	10.7	10.4	10.1	10.2	10.5	10.7			
15	11.0	11.0	10.6	10.2	9.95	10.3	10.8	11.1	11.3	11.1	10.8	10.3	9.87	10.1	10.6	10.9			
20	11.3	11.2	10.7	10.1	9.64	10.2	10.9	11.3	11.5	11.3	10.8	10.2	9.53	9.97	10.6	11.1			
25	11.4	11.3	10.7	9.86	9.24	9.98	10.9	11.5	11.7	11.4	10.8	9.95	9.13	9.73	10.6	11.2			
30	11.5	11.3	10.6	9.56	8.77	9.68	10.8	11.6	11.8	11.5	10.7	9.64	8.63	9.40	10.4	11.2			
35	11.5	11.3	10.4	9.19	8.22	9.32	10.7	11.5	11.9	11.5	10.5	9.25	8.09	9.01	10.2	11.2			
40	11.5	11.2	10.2	8.76	7.62	8.89	10.4	11.4	11.8	11.4	10.3	8.83	7.46	8.56	9.99	11.1			
45	11.4	11.0	9.87	8.29	6.97	8.40	10.1	11.3	11.7	11.3	9.97	8.33	6.81	8.07	9.70	10.9			
50	11.2	10.8	9.51	7.76	6.27	7.88	9.74	11.0	11.5	11.0	9.61	7.79	6.11	7.54	9.34	10.7			
55	10.9	10.5	9.09	7.20	5.55	7.31	9.31	10.7	11.2	10.7	9.18	7.24	5.39	6.97	8.92	10.4			
60	10.6	10.1	8.61	6.60	4.80	6.70	8.81	10.3	10.9	10.3	8.71	6.63	4.65	6.39	8.46	10.0			
65	10.2	9.63	8.09	5.98	4.04	6.05	8.25	9.83	10.5	9.89	8.19	6.00	3.91	5.80	7.96	9.59			
70	9.76	9.16	7.52	5.32	3.28	5.38	7.65	9.32	10.00	9.39	7.62	5.35	3.17	5.16	7.37	9.07			
75	9.15	8.59	6.92	4.66	2.52	4.68	7.02	8.75	9.45	8.82	7.01	4.67	2.43	4.48	6.78	8.52			
80	8.53	7.96	6.29	3.98	1.77	3.96	6.35	8.11	8.82	8.20	6.37	3.98	1.69	3.81	6.15	7.90			
85	7.88	7.28	5.62	3.30	1.03	3.26	5.65	7.42	8.15	7.53	5.69	3.30	0.96	3.13	5.49	7.24			
90	7.29	6.67	4.99	2.67	0.35	2.65	5.10	6.86	7.58	6.98	5.14	2.73	0.32	2.55	4.90	6.66			
95	7.02	6.41	4.79	2.58	0.35	2.58	4.94	6.64	7.32	6.75	4.98	2.66	0.31	2.48	4.72	6.41			
100	6.84	6.25	4.66	2.15	0.35	2.48	4.80	6.45	7.11	6.56	4.85	2.55	0.31	1.60	4.59	6.25			
105	6.58	5.95	4.11	1.83	0.36	2.28	4.62	6.20	6.84	6.31	4.65	2.33	0.32	1.44	4.14	5.96			
110	6.03	5.36	3.75	1.66	0.37	2.02	4.31	5.88	6.51	5.98	4.33	2.06	0.33	1.41	3.22	5.44			
115	5.56	4.96	3.39	1.47	0.37	1.75	3.94	5.45	6.05	5.53	3.94	1.80	0.33	1.37	2.93	4.88			
120	5.09	4.52	3.08	1.28	0.37	1.49	3.52	4.95	5.52	5.03	3.52	1.52	0.34	1.26	2.79	3.98			
125	4.54	4.03	2.66	1.12	0.37	1.20	3.08	4.39	4.92	4.45	3.07	1.23	0.35	1.03	2.40	3.56			
130	3.99	3.55	2.18	0.94	0.37	0.95	2.63	3.81	4.29	3.87	2.63	0.98	0.35	0.85	1.96	3.35			
135	3.43	3.07	1.84	0.77	0.37	0.74	2.19	3.25	3.66	3.29	2.19	0.77	0.36	0.68	1.65	2.82			
140	2.85	2.55	1.42	0.61	0.37	0.56	1.74	2.66	3.04	2.71	1.74	0.59	0.37	0.56	1.34	2.35			
145	2.32	1.84	1.14	0.49	0.37	0.40	1.33	2.11	2.42	2.15	1.31	0.44	0.37	0.46	1.03	1.78			
150	1.85	1.34	0.88	0.40	0.37	0.39	0.96	1.54	1.81	1.58	0.96	0.38	0.38	0.39	0.78	1.33			
155	1.37	0.94	0.66	0.39	0.37	0.39	0.65	1.07	1.18	1.11	0.65	0.38	0.38	0.39	0.58	0.93			
160	0.94	0.65	0.49	0.39	0.37	0.39	0.42	0.67	0.72	0.71	0.41	0.38	0.38	0.39	0.44	0.64			
165	0.57	0.44	0.40	0.39	0.37	0.39	0.40	0.39	0.44	0.42	0.40	0.38	0.38	0.39	0.39	0.45			
170	0.40	0.39	0.40	0.39	0.37	0.39	0.40	0.40	0.39	0.40	0.40	0.38	0.38	0.39	0.39	0.41			
175	0.39	0.39	0.40	0.39	0.37	0.39	0.40	0.40	0.39	0.40	0.40	0.38	0.38	0.39	0.39	0.41			
180	0.39	0.39	0.40	0.39	0.38	0.39	0.40	0.39	0.39	0.40	0.40	0.38	0.38	0.39	0.39	0.40			

C Range: 0 - 360DEG
C Interval: 22.5DEG
Test Speed: HIGH
Temperature:25.3℃
Operators:Cloud
Test Date:2024-10-15

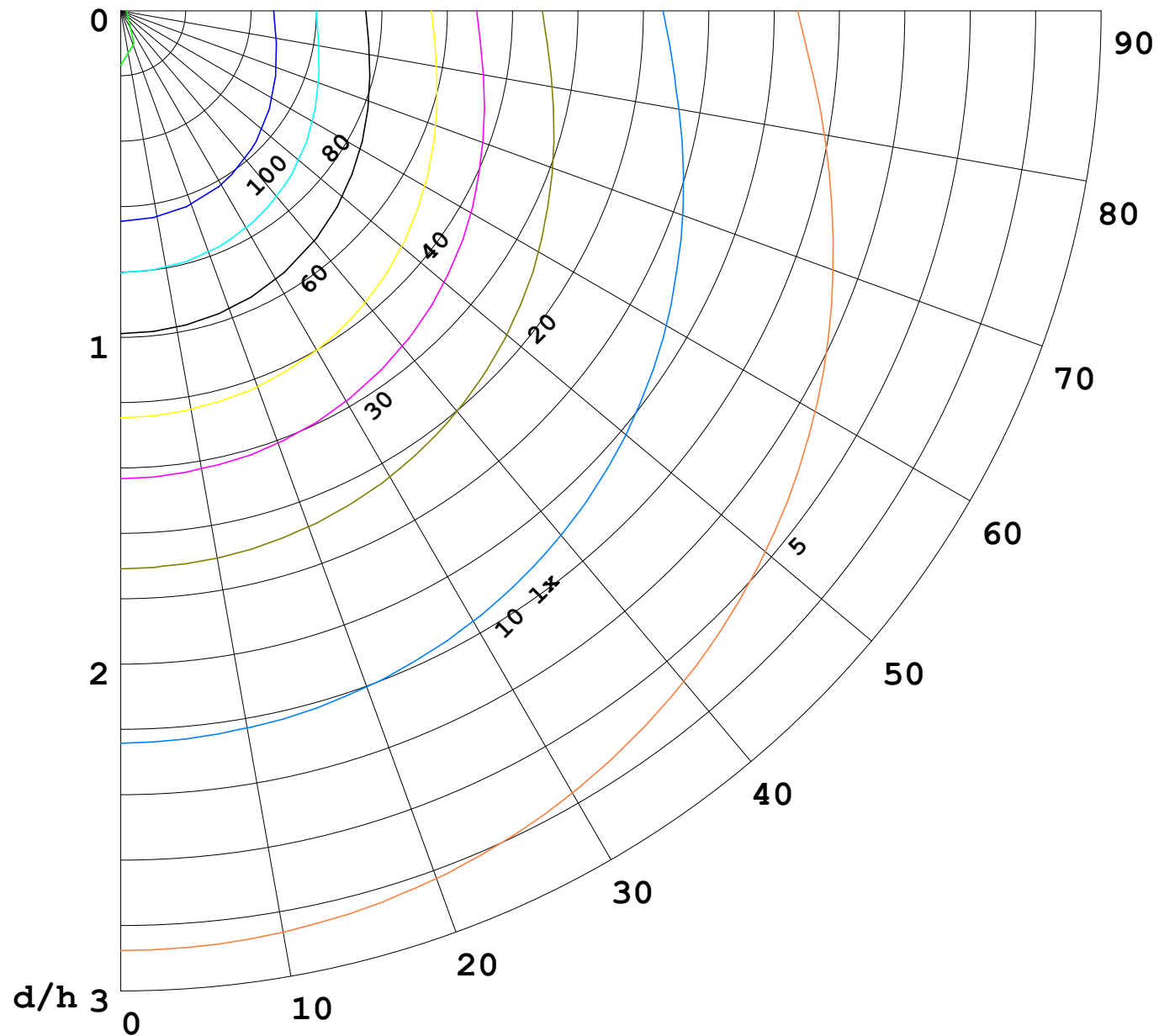
γ Range: 0 - 180DEG
γ Interval: 1.0DEG
Test System:EVERFINE GO-2000B_V1 SYSTEM V2.00.488
Humidity:65.0%
Test Distance:6.360m [K=1.0000]
Remarks: RED

I (cd)



1000 lm

$\kappa = 1$



F = 1000 lm
 K = 0.7
 Hcc = 0.8 m
 Hfc = 0.0 m
 Eave = 100 lx

	Pcc	Pw	Pfc
—————	70	50	30
—————	50	30	20

