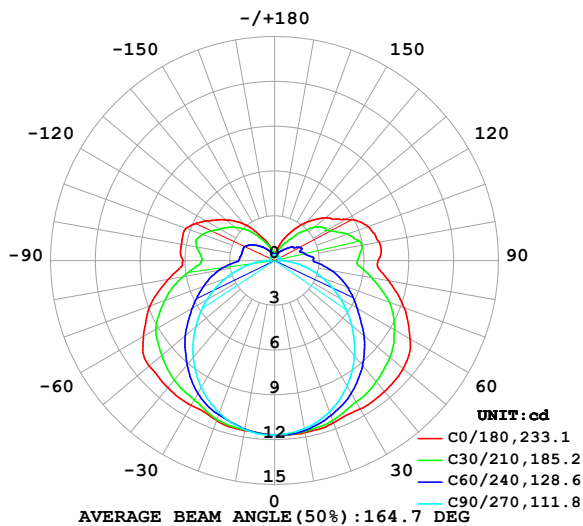


LUMINAIRE PHOTOMETRIC TEST REPORT

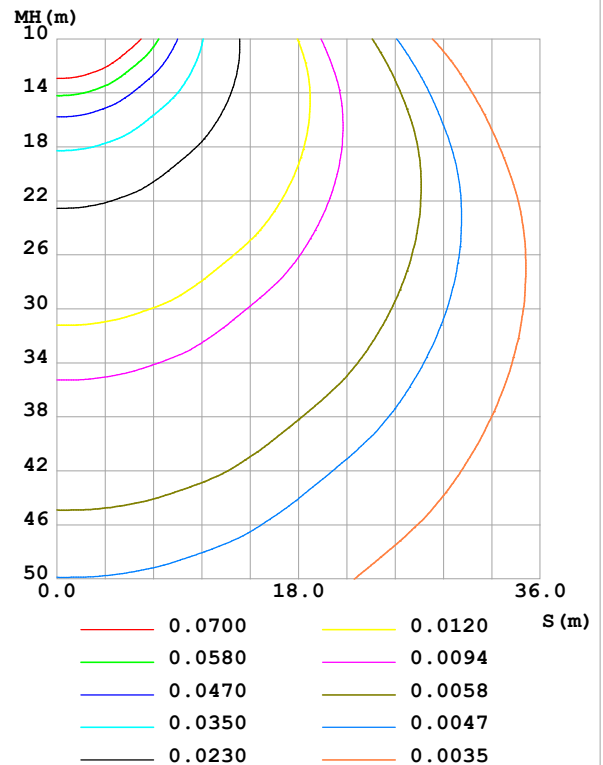
Test:U:24.00V I:0.1601A P:3.842W PF:1.000 Freq:0Hz Lamp Flux:65.4095x1 lm		
NAME: SF18-24V-5050-72-RGB-R	TYPE:	WEIGHT:
SPEC.:	DIM.: Length=1m	SERIAL No.:
MFR.: Olym pia lighting	SUR.:	Shielding Angle:

DATA OF LAMP		PHOTOMETRIC DATA Eff: 17.02 lm/W			
MODEL	5050	I _{max} (cd)	11.73	S/MH(C0/180)	1.47
NOMINAL POWER(W)		LOR(%)	100.0	S/MH(C90/270)	1.25
RATED VOLTAGE(V)	24	TOTAL FLUX(lm)	65.409	η UP,DN(C0-180)	13.2,36.9
NOMINAL FLUX(lm)	65.4095	CIE CLASS	SEMI-D.	η UP,DN(C180-360)	12.9,37.0
LAMPS INSIDE	1	η up (%)	26.1	CIBSE SHR NOM	1.50
TEST VOLTAGE(V)		η down (%)	73.9	CIBSE SHR MAX	1.55

LUMINOUS INTENSITY DISTRIBUTION DIAGRAM



C0 PLANE ISOLUX DIAGRAM (UNIT:lx)



C Range: 0 - 360DEG
C Interval: 30.0DEG
Test Speed: HIGH
Temperature:25.3℃
Operators:
Test Date:2025-03-17

γ Range: 0 - 180DEG
γ Interval: 1.0DEG
Test System:EVERFINE GO-2000B_V1 SYSTEM V2.00.488
Humidity:65.0%
Test Distance:6.360m [K=1.0000]
Remarks:

ZONAL FLUX DIAGRAM

ZONAL FLUX DIAGRAM:

γ	C0	C45	C90	C135	C180	C225	C270	C315	γ	Φ zone	Φ total	%lum, lamp
10	11.70	11.60	11.43	11.47	11.56	11.48	11.50	11.63	0- 10	1.109	1.109	1.69,1.69
20	11.56	11.22	10.78	11.13	11.40	11.16	10.86	11.28	10- 20	3.222	4.331	6.62,6.62
30	11.48	10.60	9.721	10.47	11.20	10.53	9.827	10.70	20- 30	5.026	9.357	14.3,14.3
40	11.45	9.884	8.322	9.708	11.13	9.792	8.478	10.01	30- 40	6.418	15.77	24.1,24.1
50	11.26	8.955	6.744	8.745	10.98	8.843	6.903	9.094	40- 50	7.270	23.04	35.2,35.2
60	10.47	7.835	5.085	7.685	10.16	7.788	5.232	7.987	50- 60	7.507	30.55	46.7,46.7
70	9.233	6.700	3.418	6.404	8.881	6.465	3.516	6.811	60- 70	7.087	37.64	57.5,57.5
80	7.748	5.242	1.790	4.989	7.226	5.019	1.842	5.322	70- 80	6.070	43.71	66.8,66.8
90	6.936	4.079	0.3410	3.695	6.150	3.642	0.3389	4.091	80- 90	4.634	48.34	73.9,73.9
100	7.116	4.078	0.3381	3.860	6.343	3.795	0.3352	4.094	90-100	4.144	52.49	80.2,80.2
110	6.672	3.512	0.3439	3.723	6.324	3.706	0.3554	3.702	100-110	3.944	56.43	86.3,86.3
120	5.552	2.941	0.3526	3.172	5.321	3.159	0.3613	3.060	110-120	3.306	59.74	91.3,91.3
130	4.490	2.460	0.3555	2.546	4.251	2.540	0.3670	2.506	120-130	2.469	62.20	95.1,95.1
140	3.372	1.615	0.3613	1.876	3.179	1.877	0.3670	1.617	130-140	1.646	63.85	97.6,97.6
150	2.221	1.015	0.3844	1.230	1.905	1.186	0.3699	0.9876	140-150	0.9148	64.77	99,99
160	1.319	0.6201	0.3931	0.7837	1.150	0.7775	0.3728	0.6137	150-160	0.4354	65.20	99.7,99.7
170	0.4673	0.4428	0.3960	0.5023	0.4467	0.4977	0.3757	0.4360	160-170	0.1674	65.37	99.9,99.9
180	0.4007	0.4067	0.4017	0.4100	0.4036	0.4140	0.3873	0.4042	170-180	0.0415	65.41	100,100
DEG	LUMINOUS INTENSITY:cd									UNIT:lm		

Conical surface Flux(90deg): 19.339 lm

%lum = 29.6%

%lamp = 29.6%

Conical surface Flux(130deg): 34.185 lm

%lum = 52.3%

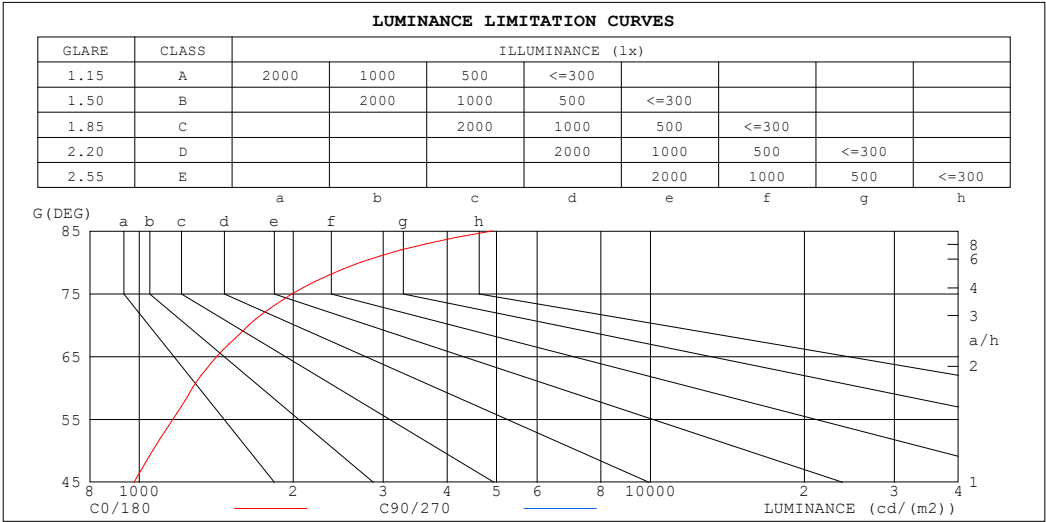
%lamp = 52.3%

C Range: 0 - 360DEG
 C Interval: 30.0DEG
 Test Speed: HIGH
 Temperature:25.3℃
 Operators:
 Test Date:2025-03-17

γ Range: 0 - 180DEG
 γ Interval: 1.0DEG
 Test System:EVERFINE GO-2000B_V1 SYSTEM V2.00.488
 Humidity:65.0%
 Test Distance:6.360m [K=1.0000]
 Remarks:

LUMINANCE LIMITATION CURVES

Test:U:24.00V I:0.1601A P:3.842W PF:1.000 Freq:0Hz Lamp Flux:65.4095x1 lm		
NAME: SF18-24V-5050-72-RGB-R	TYPE:	WEIGHT:
SPEC.:	DIM.: Length=1m	SERIAL No.:
MFR.: OLYMPIA lighting	SUR.:	Shielding Angle:



LUMINANCE cd/(m2)		
G (DEG)	C0/180	C90/270
85	4906	699
80	2707	624
75	1992	608
70	1638	605
65	1417	609
60	1271	616
55	1163	624
50	1063	635
45	977	646

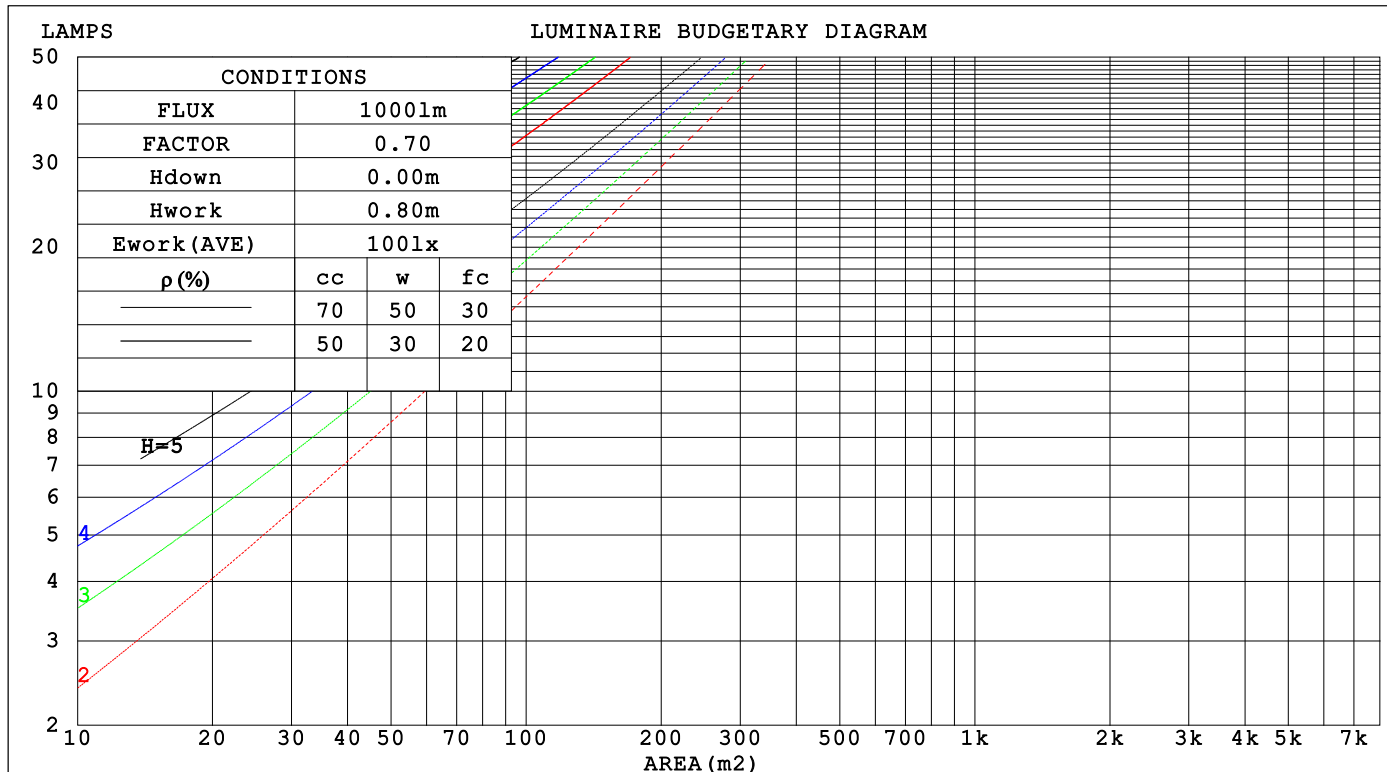
C Range: 0 - 360DEG
C Interval: 30.0DEG
Test Speed: HIGH
Temperature:25.3℃
Operators:
Test Date:2025-03-17

γ Range: 0 - 180DEG
γ Interval: 1.0DEG
Test System:EVERFINE GO-2000B_V1 SYSTEM V2.00.488
Humidity:65.0%
Test Distance:6.360m [K=1.0000]
Remarks:

CU AND LUMINAIRE BUDGETARY ESTIMATE DIAGRAM

Test:U:24.00V I:0.1601A P:3.842W PF:1.000 Freq:0Hz Lamp Flux:65.4095x1 lm		
NAME: SF18-24V-5050-72-RGB-R	TYPE:	WEIGHT:
SPEC.:	DIM.: Length=1m	SERIAL No.:
MFR.: OLYMPIA lighting	SUR.:	Shielding Angle:

pcc	80%			70%			50%			30%			10%			0														
p _w	50%	30%	10%	50%	30%	10%	50%	30%	10%	50%	30%	10%	50%	30%	10%	0														
p _{fc}	20%			20%			20%			20%			20%			0														
RCR	RCR:Room Cavity Ratio															Coefficients of Utilization(CU)														
0.0	1.13	1.13	1.13	1.07	1.07	1.07	.97	.97	.97	.87	.87	.87	.78	.78	.78	.74														
1.0	.94	.89	.84	.89	.84	.80	.80	.76	.73	.71	.68	.66	.64	.61	.59	.55														
2.0	.80	.72	.66	.76	.69	.63	.68	.62	.57	.61	.56	.52	.54	.51	.47	.44														
3.0	.69	.60	.53	.66	.58	.51	.59	.52	.47	.53	.47	.43	.47	.42	.39	.35														
4.0	.61	.51	.44	.58	.49	.42	.52	.45	.39	.46	.40	.36	.41	.36	.32	.29														
5.0	.54	.44	.37	.51	.42	.36	.46	.39	.33	.41	.35	.30	.37	.32	.28	.25														
6.0	.48	.39	.32	.46	.37	.31	.41	.34	.29	.37	.31	.26	.33	.28	.24	.21														
7.0	.43	.34	.28	.41	.33	.27	.37	.30	.25	.34	.27	.23	.30	.25	.21	.19														
8.0	.39	.30	.25	.37	.29	.24	.34	.27	.22	.31	.25	.20	.28	.22	.19	.16														
9.0	.36	.27	.22	.34	.26	.21	.31	.24	.20	.28	.22	.18	.25	.20	.17	.15														
10.0	.33	.25	.20	.31	.24	.19	.29	.22	.18	.26	.20	.16	.23	.19	.15	.13														



C Range: 0 - 360DEG
C Interval: 30.0DEG
Test Speed: HIGH
Temperature:25.3℃
Operators:
Test Date:2025-03-17

γ Range: 0 - 180DEG
γ Interval: 1.0DEG
Test System:EVERFINE GO-2000B_V1 SYSTEM V2.00.488
Humidity:65.0%
Test Distance:6.360m [K=1.0000]
Remarks:

WEC AND CCEC

Test:U:24.00V I:0.1601A P:3.842W PF:1.000 Freq:0Hz Lamp Flux:65.4095x1 lm		
NAME: SF18-24V-5050-72-RGB-R	TYPE:	WEIGHT:
SPEC.:	DIM.: Length=1m	SERIAL No.:
MFR.: OLympia lighting	SUR.:	Shielding Angle:

pcc	80%			70%			50%			30%			10%			0														
pw	50%	30%	10%	50%	30%	10%	50%	30%	10%	50%	30%	10%	50%	30%	10%	0														
pfc	20%			20%			20%			20%			20%			0														
RCR	RCR:Room Cavity Ratio															Wall Exitance Coefficients(WEC)														
0.0																														
1.0	.382	.217	.069	.367	.209	.066	.339	.194	.062	.312	.180	.058	.288	.167	.054															
2.0	.331	.181	.056	.317	.175	.054	.292	.162	.050	.268	.150	.047	.246	.139	.044															
3.0	.294	.157	.047	.282	.151	.045	.258	.140	.043	.237	.130	.040	.216	.120	.037															
4.0	.265	.138	.040	.253	.133	.039	.232	.123	.037	.212	.114	.034	.194	.105	.032															
5.0	.240	.123	.036	.230	.118	.034	.211	.110	.032	.193	.102	.030	.176	.094	.028															
6.0	.220	.110	.032	.211	.107	.031	.193	.099	.029	.176	.092	.027	.161	.085	.025															
7.0	.203	.100	.028	.194	.097	.028	.178	.090	.026	.163	.083	.024	.148	.077	.023															
8.0	.188	.092	.026	.180	.089	.025	.165	.083	.024	.151	.077	.022	.138	.071	.021															
9.0	.175	.085	.024	.168	.082	.023	.154	.076	.022	.141	.071	.020	.129	.065	.019															
10.0	.164	.079	.022	.157	.076	.021	.144	.071	.020	.132	.066	.019	.121	.061	.017															

pcc	80%			70%			50%			30%			10%			0
pw	50%	30%	10%	50%	30%	10%	50%	30%	10%	50%	30%	10%	50%	30%	10%	0
pfc	20%			20%			20%			20%			20%			0
RCR	RCR:Room Cavity Ratio						Ceiling Cavity Exitance Coefficients (CCEC)									
0.0	.389	.389	.389	.333	.333	.333	.227	.227	.227	.130	.130	.130	.042	.042	.042	
1.0	.386	.356	.329	.330	.305	.283	.226	.210	.196	.130	.122	.114	.042	.039	.037	
2.0	.379	.334	.295	.325	.287	.255	.223	.199	.178	.128	.116	.104	.041	.037	.034	
3.0	.372	.317	.274	.319	.274	.237	.219	.190	.166	.126	.111	.098	.041	.036	.032	
4.0	.364	.305	.260	.313	.264	.226	.215	.184	.159	.124	.108	.094	.040	.035	.031	
5.0	.357	.295	.250	.307	.256	.218	.211	.179	.154	.122	.105	.091	.039	.034	.030	
6.0	.350	.288	.243	.300	.249	.212	.207	.174	.150	.120	.103	.089	.039	.034	.029	
7.0	.343	.281	.238	.295	.244	.208	.204	.171	.147	.118	.101	.088	.038	.033	.029	
8.0	.336	.276	.234	.289	.239	.204	.200	.168	.145	.116	.099	.086	.038	.032	.029	
9.0	.330	.271	.231	.284	.235	.202	.197	.165	.143	.115	.098	.085	.037	.032	.028	
10.0	.324	.267	.229	.279	.232	.200	.194	.163	.142	.113	.096	.085	.037	.032	.028	

C Range: 0 - 360DEG
C Interval: 30.0DEG
Test Speed: HIGH
Temperature:25.3℃
Operators:
Test Date:2025-03-17

γ Range: 0 - 180DEG
γ Interval: 1.0DEG
Test System:EVERFINE GO-2000B_V1 SYSTEM V2.00.488
Humidity:65.0%
Test Distance:6.360m [K=1.0000]
Remarks:

UGR(Unified Glare Rating) Table

Test:U:24.00V I:0.1601A P:3.842W PF:1.000 Freq:0Hz Lamp Flux:65.4095x1 lm										
NAME: SF18-24V-5050-72-RGB-R					TYPE:			WEIGHT:		
SPEC.:					DIM.: Length=1m			SERIAL No.:		
MFR.: OLympia lighting					SUR.:			Shielding Angle:		
ceiling/cavity	0.7	0.7	0.5	0.5	0.3	0.7	0.7	0.5	0.5	0.3
walls	0.5	0.3	0.5	0.3	0.3	0.5	0.3	0.5	0.3	0.3
working plane	0.2	0.2	0.2	0.2	0.2	0.2	0.2	0.2	0.2	0.2
Room dimensions	Viewed crosswise					Viewed endwise				
x = 2H y = 2H	22.0	23.2	22.6	23.9	24.6	18.9	20.2	19.5	20.8	21.5
3H	24.8	25.9	25.4	26.6	27.3	20.6	21.8	21.2	22.4	23.2
4H	26.3	27.4	26.9	28.0	28.8	21.4	22.5	22.0	23.2	24.0
6H	27.9	28.9	28.5	29.6	30.4	22.0	23.1	22.7	23.8	24.6
8H	28.8	29.8	29.4	30.5	31.3	22.3	23.3	23.0	24.0	24.8
12H	29.8	30.8	30.5	31.5	32.3	22.5	23.5	23.2	24.2	25.0
4H 2H	22.4	23.6	23.1	24.2	25.0	20.3	21.4	20.9	22.1	22.8
3H	25.5	26.5	26.2	27.2	28.0	22.2	23.2	22.9	23.9	24.7
4H	27.2	28.1	27.9	28.8	29.7	23.1	24.0	23.8	24.7	25.6
6H	29.0	29.8	29.8	30.6	31.5	24.0	24.8	24.7	25.5	26.4
8H	30.0	30.8	30.8	31.5	32.4	24.3	25.1	25.1	25.8	26.7
12H	31.2	31.9	32.0	32.7	33.6	24.6	25.3	25.4	26.1	27.0
8H 4H	27.5	28.2	28.2	29.0	29.9	24.3	25.0	25.0	25.8	26.7
6H	29.6	30.2	30.4	31.0	32.0	25.5	26.1	26.2	26.9	27.8
8H	30.8	31.4	31.6	32.2	33.2	26.0	26.6	26.8	27.4	28.3
12H	32.3	32.7	33.1	33.6	34.6	26.5	27.0	27.3	27.8	28.8
12H 4H	27.5	28.2	28.3	29.0	29.9	24.7	25.4	25.4	26.1	27.1
6H	29.7	30.3	30.5	31.1	32.0	26.1	26.6	26.9	27.4	28.4
8H	31.0	31.5	31.9	32.4	33.3	26.8	27.2	27.6	28.1	29.0
Variations with the observer position at spacings(CIE Pub.117):										
S = 1.0H	+ 0.1 / - 0.1					+ 0.1 / - 0.1				
1.5H	+ 0.2 / - 0.2					+ 0.2 / - 0.3				
2.0H	+ 0.2 / - 0.3					+ 0.2 / - 0.4				

CIE Pub.117, 65.41 lm Total Lamp Luminous Flux Correct (8log(F/F0) = -9.5)
Area: 0.0165 m2

C Range: 0 - 360DEG
C Interval: 30.0DEG
Test Speed: HIGH
Temperature:25.3℃
Operators:
Test Date:2025-03-17

γ Range: 0 - 180DEG
γ Interval: 1.0DEG
Test System:EVERFINE GO-2000B_V1 SYSTEM V2.00.488
Humidity:65.0%
Test Distance:6.360m [K=1.0000]
Remarks:

UTILIZATION FACTORS TABLE

Test:U:24.00V I:0.1601A P:3.842W PF:1.000 Freq:0Hz Lamp Flux:65.4095x1 lm		
NAME: SF18-24V-5050-72-RGB-R	TYPE:	WEIGHT:
SPEC.:	DIM.: Length=1m	SERIAL No.:
MFR.: OLympia lighting	SUR.:	Shielding Angle:

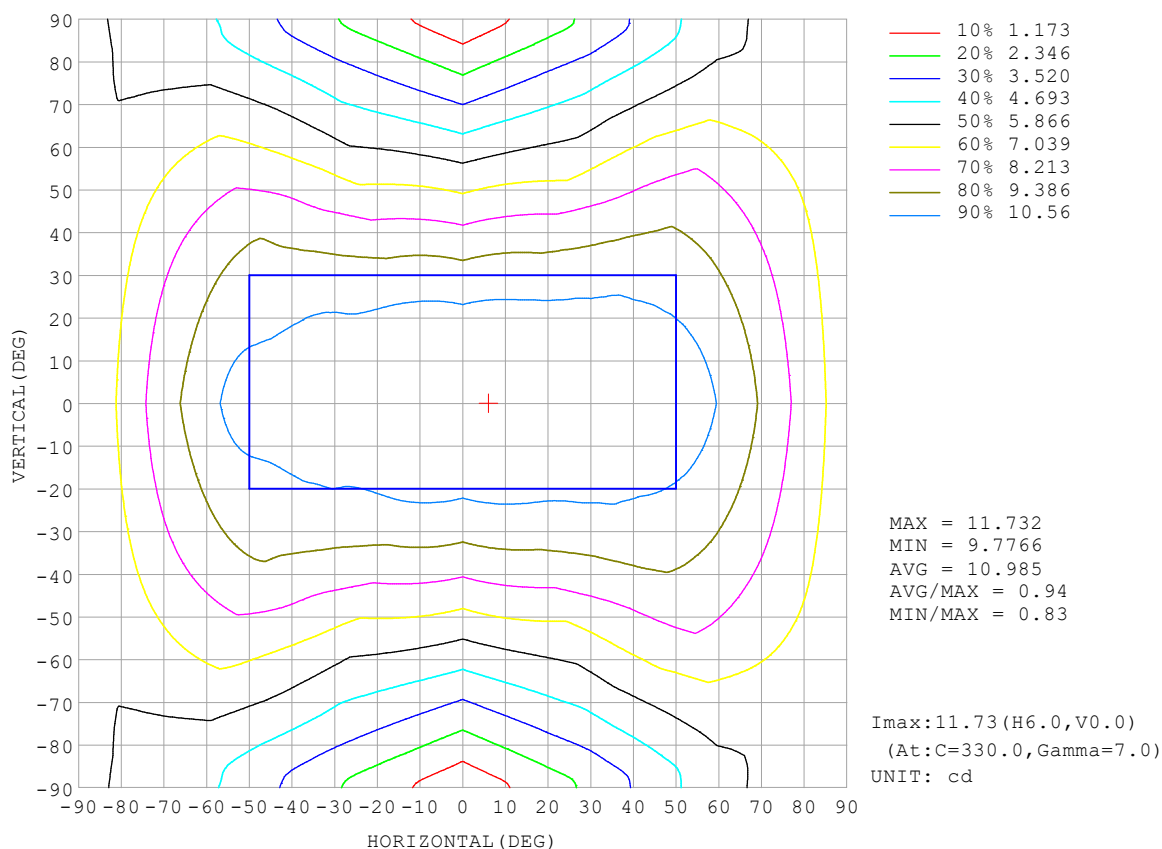
REFLECTANCE										
Ceiling	0.8	0.8	0.8	0.7	0.7	0.7	0.5	0.5	0.5	0
Walls	0.7	0.5	0.3	0.7	0.5	0.3	0.7	0.5	0.3	0
Working plane	0.2	0.2	0.2	0.2	0.2	0.2	0.2	0.2	0.2	0
ROOM INDEX	UTILIZATION FACTORS (PERCENT) $k(RI) \times RCR = 5$									
$k = 0.60$	45	32	25	43	32	25	41	31	24	17
0.80	54	41	33	52	40	32	49	38	31	23
1.00	62	48	40	59	47	39	55	47	37	28
1.25	69	56	47	66	54	46	61	51	44	33
1.50	74	61	52	71	59	51	65	55	48	37
2.00	81	70	61	78	67	59	71	62	56	43
2.50	86	75	67	82	72	65	74	67	61	46
3.00	90	80	72	85	77	70	77	71	65	49
4.00	95	86	80	90	83	76	81	76	71	54
5.00	98	90	84	93	86	81	84	79	74	57
ROOM INDEX	UF (total)									Direct
According to DIN EN 13032-2 2004			Suspended					SHRNOM = 1.25		

C Range: 0 - 360DEG
 C Interval: 30.0DEG
 Test Speed: HIGH
 Temperature: 25.3 °C
 Operators:
 Test Date: 2025-03-17

γ Range: 0 - 180DEG
 γ Interval: 1.0DEG
 Test System: EVERFINE GO-2000B_V1 SYSTEM V2.00.488
 Humidity: 65.0%
 Test Distance: 6.360m [K=1.0000]
 Remarks:

ISOCANDELA DIAGRAM

Test:U:24.00V I:0.1601A P:3.842W PF:1.000 Freq:0Hz Lamp Flux:65.4095x1 lm		
NAME: SF18-24V-5050-72-RGB-R	TYPE:	WEIGHT:
SPEC.:	DIM.: Length=1m	SERIAL No.:
MFR.: OLympia lighting	SUR.:	Shielding Angle:

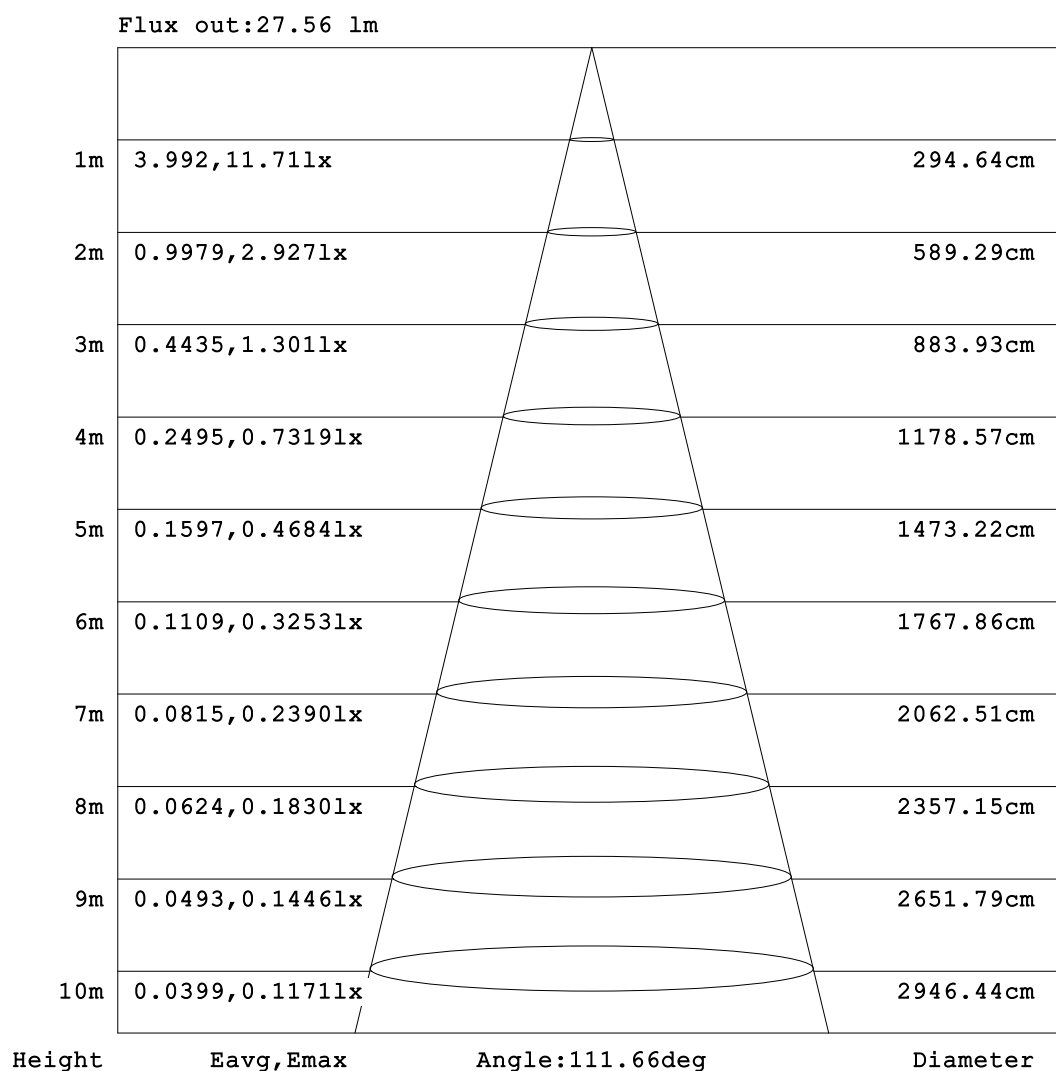


C Range: 0 - 360DEG
C Interval: 30.0DEG
Test Speed: HIGH
Temperature:25.3℃
Operators:
Test Date:2025-03-17

γ Range: 0 - 180DEG
γ Interval: 1.0DEG
Test System:EVERFINE GO-2000B_V1 SYSTEM V2.00.488
Humidity:65.0%
Test Distance:6.360m [K=1.0000]
Remarks:

AAI Figure

Test:U:24.00V I:0.1601A P:3.842W PF:1.000 Freq:0Hz Lamp Flux:65.4095x1 lm		
NAME: SF18-24V-5050-72-RGB-R	TYPE:	WEIGHT:
SPEC.:	DIM.: Length=1m	SERIAL No.:
MFR.: OLympia lighting	SUR.:	Shielding Angle:



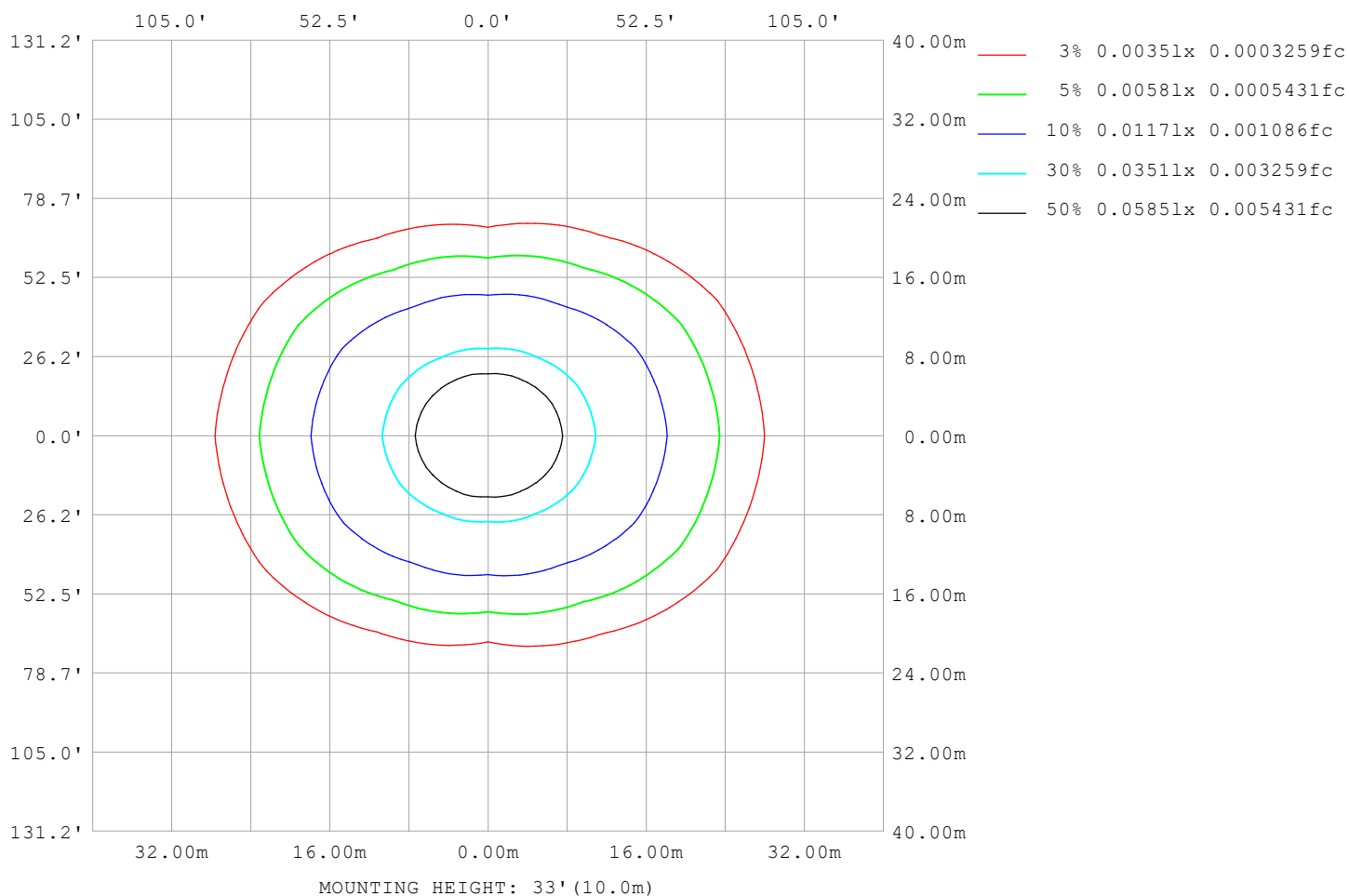
Note:The Curves indicate the illuminated area and the average illumination when the luminaire is at different distance.

C Range: 0 - 360DEG
C Interval: 30.0DEG
Test Speed: HIGH
Temperature:25.3℃
Operators:
Test Date:2025-03-17

γ Range: 0 - 180DEG
γ Interval: 1.0DEG
Test System:EVERFINE GO-2000B_V1 SYSTEM V2.00.488
Humidity:65.0%
Test Distance:6.360m [K=1.0000]
Remarks:

ISOLUX DIAGRAM

Test:U:24.00V I:0.1601A P:3.842W PF:1.000 Freq:0Hz Lamp Flux:65.4095x1 lm		
NAME: SF18-24V-5050-72-RGB-R	TYPE:	WEIGHT:
SPEC.:	DIM.: Length=1m	SERIAL No.:
MFR.: OLympia lighting	SUR.:	Shielding Angle:



C Range: 0 - 360DEG
C Interval: 30.0DEG
Test Speed: HIGH
Temperature:25.3℃
Operators:
Test Date:2025-03-17

γ Range: 0 - 180DEG
γ Interval: 1.0DEG
Test System:EVERFINE GO-2000B_V1 SYSTEM V2.00.488
Humidity:65.0%
Test Distance:6.360m [K=1.0000]
Remarks:

LED Avg.L Report

Test:U:24.00V I:0.1601A P:3.842W PF:1.000 Freq:0Hz Lamp Flux:65.4095x1 lm		
NAME: SF18-24V-5050-72-RGB-R	TYPE:	WEIGHT:
SPEC.:	DIM.: Length=1m	SERIAL No.:
MFR.: OLympia lighting	SUR.:	Shielding Angle:

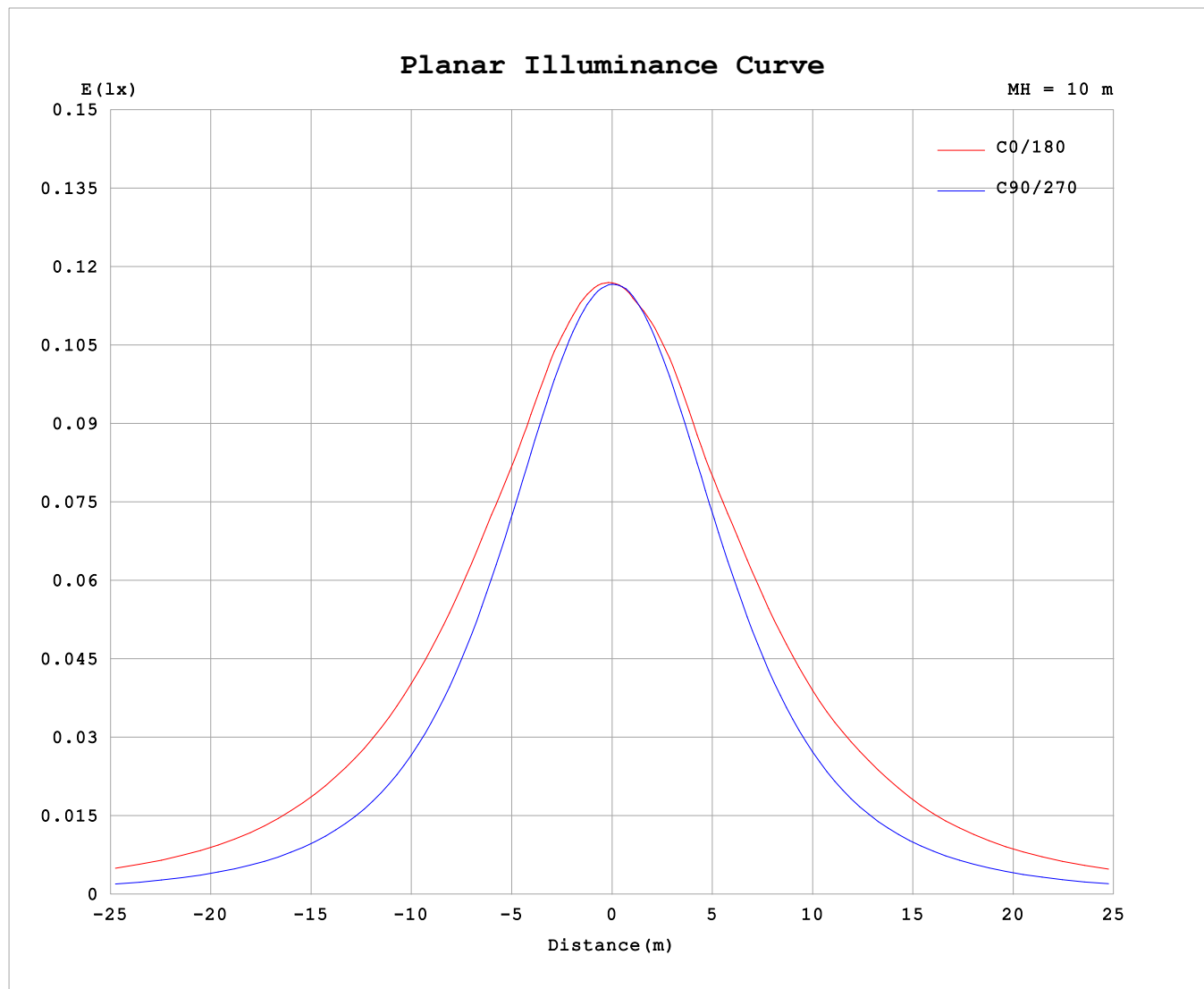
AvgL	cd/m2
L_0~180 (65) av	1390
L_0~180 (75) av	1940
L_0~180 (85) av	4691
L_90~270 (65) av	619
L_90~270 (75) av	616
L_90~270 (85) av	711
L_45 (65) av	1040
L_45 (75) av	1393
L_45 (85) av	3078

Standard: GB/T 29293-2012

C Range: 0 - 360DEG
C Interval: 30.0DEG
Test Speed: HIGH
Temperature:25.3℃
Operators:
Test Date:2025-03-17

γ Range: 0 - 180DEG
γ Interval: 1.0DEG
Test System:EVERFINE GO-2000B_V1 SYSTEM V2.00.488
Humidity:65.0%
Test Distance:6.360m [K=1.0000]
Remarks:

Planar Illuminance Curve



C Range: 0 - 360DEG
C Interval: 30.0DEG
Test Speed: HIGH
Temperature: 25.3 °C
Operators:
Test Date: 2025-03-17

γ Range: 0 - 180DEG
 γ Interval: 1.0DEG
Test System: EVERFINE GO-2000B_V1 SYSTEM V2.00.488
Humidity: 65.0%
Test Distance: 6.360m [K=1.0000]
Remarks:

LUMINOUS DISTRIBUTION INTENSITY DATA

Test:U:24.00V I:0.1601A P:3.842W PF:1.000 Freq:0Hz Lamp Flux:65.4095x1 lm		
NAME: SF18-24V-5050-72-RGB-R	TYPE:	WEIGHT:
SPEC.:	DIM.: Length=1m	SERIAL No.:
MFR.: OLympia lighting	SUR.:	Shielding Angle:

Table--1

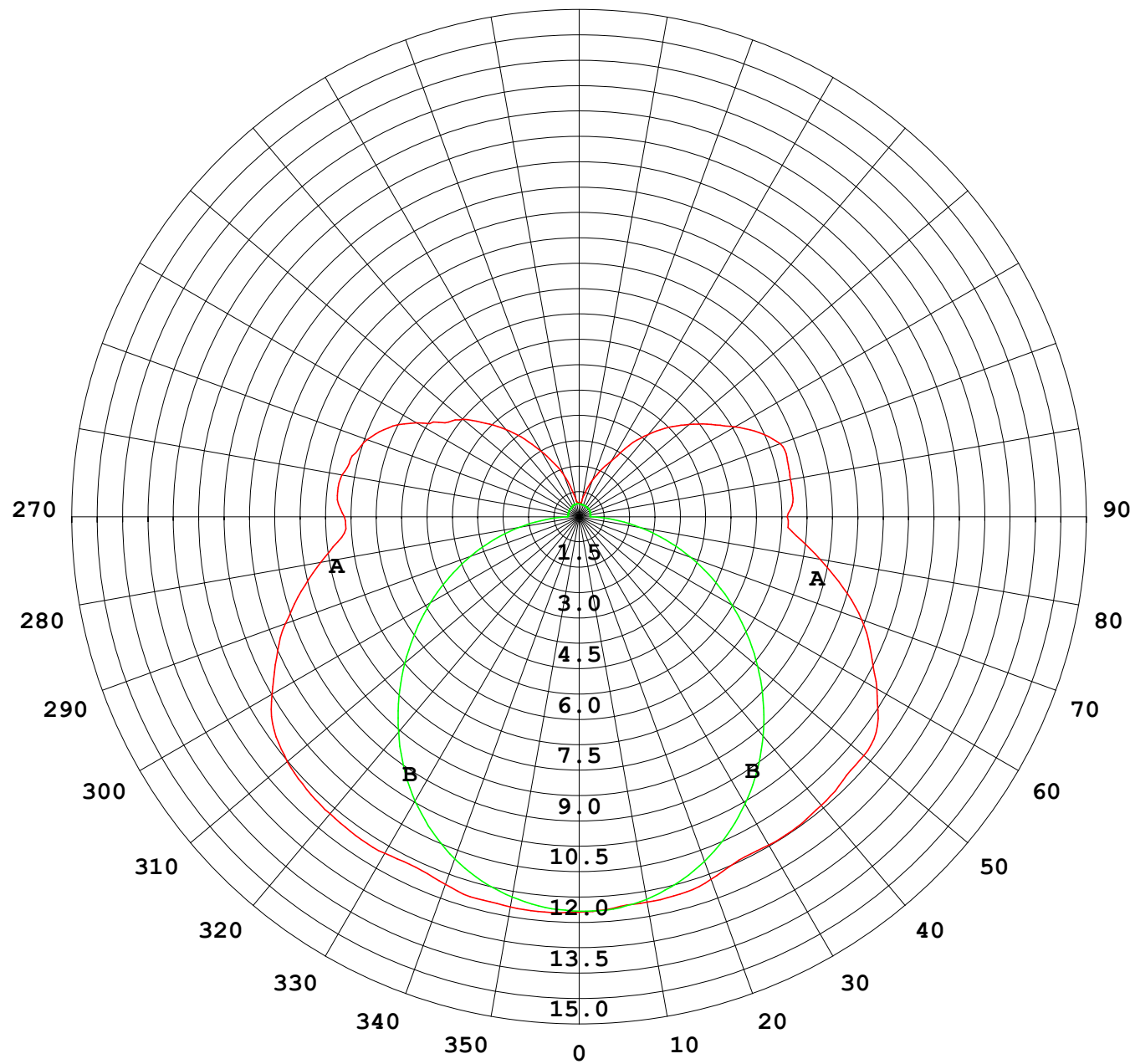
UNIT: cd

C (DEG) γ (DEG)	0	30	60	90	120	150	180	210	240	270	300	330						
0	11.7	11.7	11.7	11.7	11.7	11.7	11.7	11.7	11.7	11.7	11.7	11.7						
5	11.7	11.7	11.7	11.6	11.6	11.6	11.6	11.6	11.6	11.7	11.7	11.7						
10	11.7	11.6	11.6	11.4	11.5	11.5	11.6	11.5	11.5	11.5	11.6	11.7						
15	11.7	11.5	11.3	11.2	11.2	11.4	11.5	11.5	11.2	11.2	11.4	11.6						
20	11.6	11.4	11.0	10.8	11.0	11.3	11.4	11.3	11.0	10.9	11.1	11.5						
25	11.4	11.2	10.7	10.3	10.7	11.0	11.2	11.0	10.7	10.4	10.7	11.3						
30	11.5	10.9	10.3	9.72	10.2	10.7	11.2	10.8	10.3	9.83	10.3	11.0						
35	11.5	10.8	9.74	9.06	9.64	10.6	11.2	10.6	9.75	9.19	9.84	11.0						
40	11.5	10.6	9.17	8.32	9.01	10.4	11.1	10.5	9.12	8.48	9.28	10.7						
45	11.4	10.3	8.51	7.55	8.36	10.1	11.0	10.2	8.48	7.71	8.66	10.5						
50	11.3	10.1	7.83	6.74	7.68	9.81	11.0	9.87	7.81	6.90	7.97	10.2						
55	11.0	9.74	7.04	5.91	6.93	9.48	10.8	9.55	7.07	6.08	7.20	9.87						
60	10.5	9.27	6.39	5.09	6.26	9.11	10.2	9.19	6.38	5.23	6.54	9.43						
65	9.87	8.78	5.80	4.25	5.61	8.48	9.51	8.56	5.71	4.38	5.93	8.91						
70	9.23	8.19	5.20	3.42	5.01	7.79	8.88	7.85	5.08	3.52	5.31	8.31						
75	8.50	7.36	4.57	2.60	4.41	7.08	8.07	7.11	4.46	2.66	4.68	7.47						
80	7.75	6.60	3.88	1.79	3.76	6.21	7.23	6.24	3.80	1.84	3.96	6.69						
85	7.05	5.87	3.15	1.01	3.02	5.37	6.44	5.38	3.04	1.04	3.20	5.90						
90	6.94	5.55	2.60	0.34	2.46	4.93	6.15	4.87	2.41	0.34	2.64	5.54						
95	7.17	5.76	2.62	0.34	2.39	5.10	6.34	5.00	2.35	0.33	2.66	5.73						
100	7.12	5.93	2.22	0.34	2.31	5.41	6.34	5.31	2.27	0.34	2.27	5.92						
105	6.95	5.61	2.02	0.34	2.27	5.47	6.37	5.43	2.25	0.35	2.10	5.79						
110	6.67	5.20	1.81	0.34	2.27	5.18	6.32	5.15	2.25	0.36	2.10	5.31						
115	6.22	4.59	2.01	0.35	2.25	4.73	5.88	4.70	2.22	0.36	2.03	4.85						
120	5.55	4.04	1.84	0.35	2.08	4.27	5.32	4.26	2.06	0.36	1.89	4.24						
125	4.85	3.90	1.56	0.35	1.86	3.88	4.76	3.88	1.85	0.36	1.57	4.01						
130	4.49	3.52	1.40	0.36	1.62	3.48	4.25	3.47	1.60	0.37	1.43	3.58						
135	3.91	2.84	1.16	0.36	1.39	3.04	3.74	3.05	1.37	0.37	1.19	2.89						
140	3.37	2.27	0.96	0.36	1.18	2.57	3.18	2.58	1.18	0.37	0.98	2.25						
145	2.79	1.70	0.83	0.38	1.00	2.06	2.57	2.07	0.96	0.37	0.79	1.74						
150	2.22	1.35	0.68	0.38	0.81	1.65	1.90	1.58	0.79	0.37	0.66	1.31						
155	1.73	1.03	0.57	0.40	0.68	1.30	1.52	1.27	0.67	0.37	0.54	1.01						
160	1.32	0.74	0.50	0.39	0.59	0.98	1.15	0.98	0.57	0.37	0.47	0.76						
165	0.83	0.52	0.47	0.39	0.51	0.71	0.79	0.72	0.49	0.37	0.43	0.54						
170	0.47	0.45	0.44	0.40	0.47	0.53	0.45	0.54	0.45	0.38	0.41	0.46						
175	0.42	0.41	0.42	0.40	0.47	0.46	0.41	0.48	0.44	0.38	0.40	0.43						
180	0.40	0.41	0.41	0.40	0.41	0.41	0.40	0.42	0.41	0.39	0.40	0.41						

C Range: 0 - 360DEG
C Interval: 30.0DEG
Test Speed: HIGH
Temperature:25.3℃
Operators:
Test Date:2025-03-17

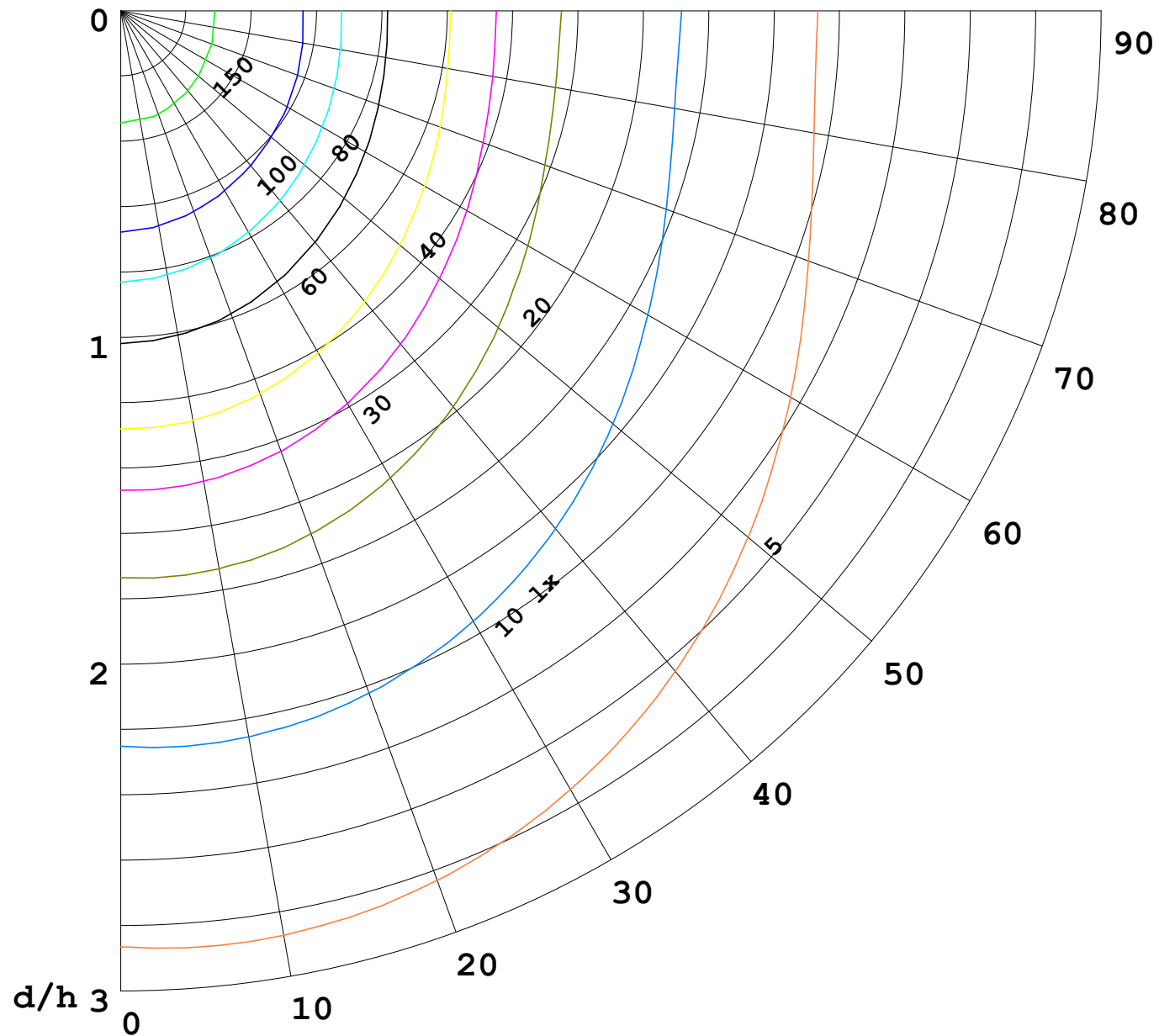
γ Range: 0 - 180DEG
γ Interval: 1.0DEG
Test System:EVERFINE GO-2000B_V1 SYSTEM V2.00.488
Humidity:65.0%
Test Distance:6.360m [K=1.0000]
Remarks:

I (cd)



1000 lm

$\kappa = 1$



F = 1000 lm
 K = 0.7
 Hcc = 0.8 m
 Hfc = 0.0 m
 Eave = 100 lx

	Pcc	Pw	Pfc
—————	70	50	30
—————	50	30	20

