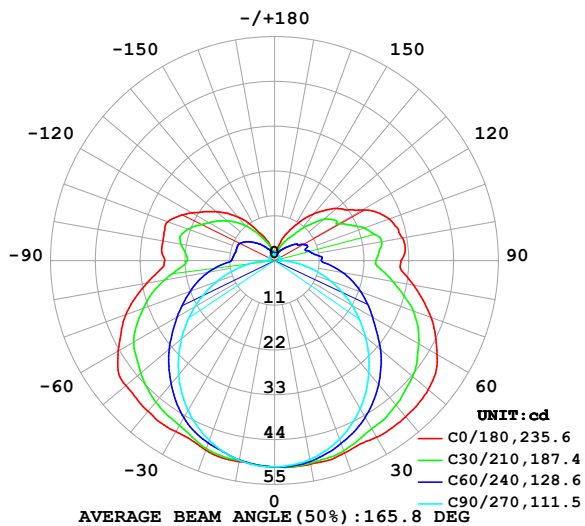


LUMINAIRE PHOTOMETRIC TEST REPORT

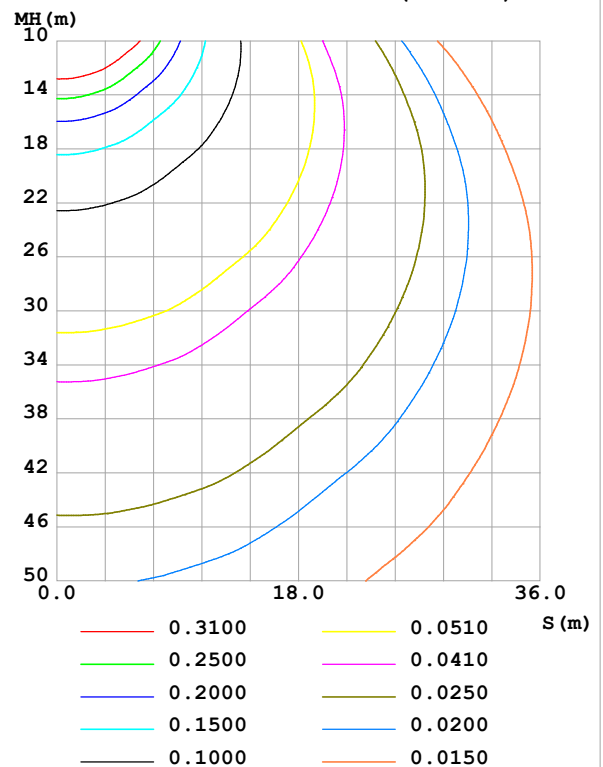
Test:U:24.00V I:0.5253A P:12.61W PF:1.000 Freq:0Hz Lamp Flux:286.54lx1 lm		
NAME: SF18-24V-5050-72-RGB-ALL	TYPE:	WEIGHT:
SPEC.:	DIM.: Length=1m	SERIAL No.:
MFR.: Olym pia lighting	SUR.:	Shielding Angle:

DATA OF LAMP		PHOTOMETRIC DATA Eff: 22.73 lm/W			
MODEL	5050	Imax (cd)	50.90	S/MH(C0/180)	1.48
NOMINAL POWER(W)	13	LOR(%)	100.0	S/MH(C90/270)	1.25
RATED VOLTAGE(V)	24	TOTAL FLUX(lm)	286.54	η UP,DN(C0-180)	13.3,36.8
NOMINAL FLUX(lm)	286.541	CIE CLASS	SEMI-D.	η UP,DN(C180-360)	13.0,36.8
LAMPS INSIDE	1	η up (%)	26.4	CIBSE SHR NOM	1.50
TEST VOLTAGE(V)		η down (%)	73.6	CIBSE SHR MAX	1.55

LUMINOUS INTENSITY DISTRIBUTION DIAGRAM



C0 PLANE ISOLUX DIAGRAM (UNIT:lx)



C Range: 0 - 360DEG
C Interval: 30.0DEG
Test Speed: HIGH
Temperature:25.3℃
Operators:
Test Date:2025-03-17

γ Range: 0 - 180DEG
 γ Interval: 1.0DEG
Test System:EVERFINE GO-2000B_V1 SYSTEM V2.00.488
Humidity:65.0%
Test Distance:6.360m [K=1.0000]
Remarks:

ZONAL FLUX DIAGRAM

ZONAL FLUX DIAGRAM:

γ	C0	C45	C90	C135	C180	C225	C270	C315	γ	Φ zone	Φ total	%lum, lamp
10	50.77	50.36	49.62	49.72	50.12	49.80	49.80	50.49	0- 10	4.809	4.809	1.68,1.68
20	50.29	48.73	46.67	48.22	49.51	48.41	46.99	49.00	10- 20	13.98	18.79	6.56,6.56
30	50.11	46.12	42.05	45.34	48.53	45.68	42.51	46.54	20- 30	21.81	40.60	14.2,14.2
40	50.06	43.07	36.04	42.06	48.40	42.48	36.67	43.61	30- 40	27.88	68.48	23.9,23.9
50	49.33	39.14	29.15	37.93	47.78	38.38	29.85	39.69	40- 50	31.63	100.1	34.9,34.9
60	46.07	34.34	21.93	33.39	44.41	33.83	22.58	34.96	50- 60	32.71	132.8	46.4,46.4
70	40.92	29.48	14.62	27.88	38.90	28.19	15.12	29.97	60- 70	30.98	163.8	57.2,57.2
80	34.64	23.25	7.548	21.82	31.85	21.99	7.895	23.68	70- 80	26.66	190.5	66.5,66.5
90	31.09	18.21	1.319	16.17	27.02	16.03	1.375	18.31	80- 90	20.52	211.0	73.6,73.6
100	31.94	18.23	1.338	16.86	27.89	16.70	1.426	18.33	90-100	18.37	229.4	80,80
110	30.00	15.71	1.357	16.34	27.97	16.24	1.510	16.58	100-110	17.50	246.9	86.2,86.2
120	24.95	13.14	1.377	13.90	23.48	13.86	1.545	13.74	110-120	14.67	261.5	91.3,91.3
130	20.03	10.98	1.409	11.15	18.73	11.15	1.574	11.23	120-130	10.94	272.5	95.1,95.1
140	15.01	7.056	1.455	8.218	13.99	8.212	1.577	7.184	130-140	7.274	279.7	97.6,97.6
150	9.836	4.345	1.507	5.337	8.371	5.261	1.581	4.376	140-150	4.022	283.8	99,99
160	5.718	2.647	1.588	3.359	5.038	3.333	1.588	2.673	150-160	1.889	285.7	99.7,99.7
170	1.930	1.856	1.649	2.142	1.946	2.115	1.626	1.862	160-170	0.7162	286.4	99.9,99.9
180	1.668	1.717	1.681	1.723	1.683	1.728	1.669	1.715	170-180	0.1758	286.5	100,100
DEG	LUMINOUS INTENSITY:cd									UNIT:lm		

Conical surface Flux(90deg): 83.987 lm

%lum = 29.3%

%lamp = 29.3%

Conical surface Flux(130deg): 148.7 lm

%lum = 51.9%

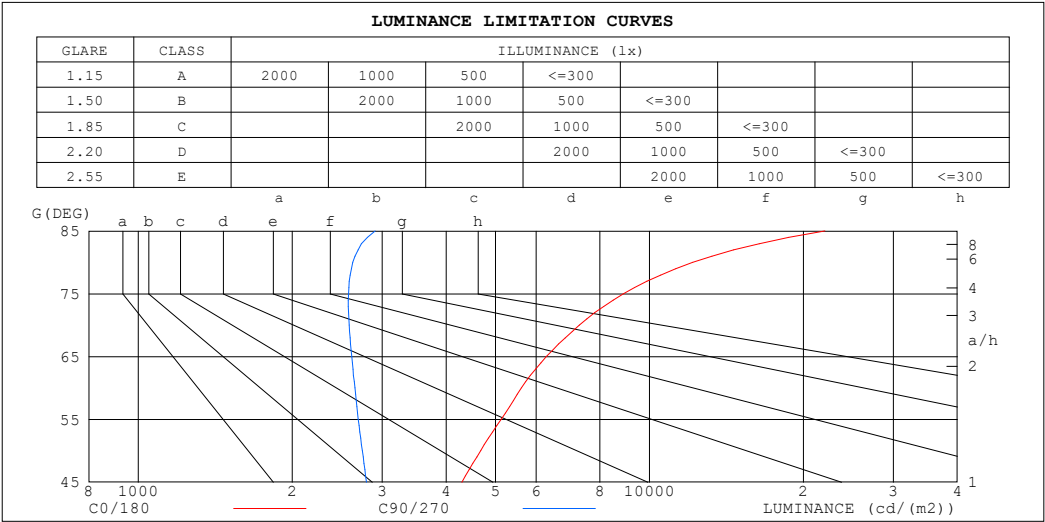
%lamp = 51.9%

C Range: 0 - 360DEG
 C Interval: 30.0DEG
 Test Speed: HIGH
 Temperature:25.3℃
 Operators:
 Test Date:2025-03-17

γ Range: 0 - 180DEG
 γ Interval: 1.0DEG
 Test System:EVERFINE GO-2000B_V1 SYSTEM V2.00.488
 Humidity:65.0%
 Test Distance:6.360m [K=1.0000]
 Remarks:

LUMINANCE LIMITATION CURVES

Test:U:24.00V I:0.5253A P:12.61W PF:1.000 Freq:0Hz Lamp Flux:286.541x1 lm		
NAME: SF18-24V-5050-72-RGB-ALL	TYPE:	WEIGHT:
SPEC.:	DIM.: Length=1m	SERIAL No.:
MFR.: OLympia lighting	SUR.:	Shielding Angle:



LUMINANCE cd/(m2)		
G (DEG)	C0/180	C90/270
85	22046	2908
80	12152	2628
75	8894	2578
70	7288	2585
65	6284	2615
60	5613	2652
55	5126	2692
50	4676	2742
45	4296	2794

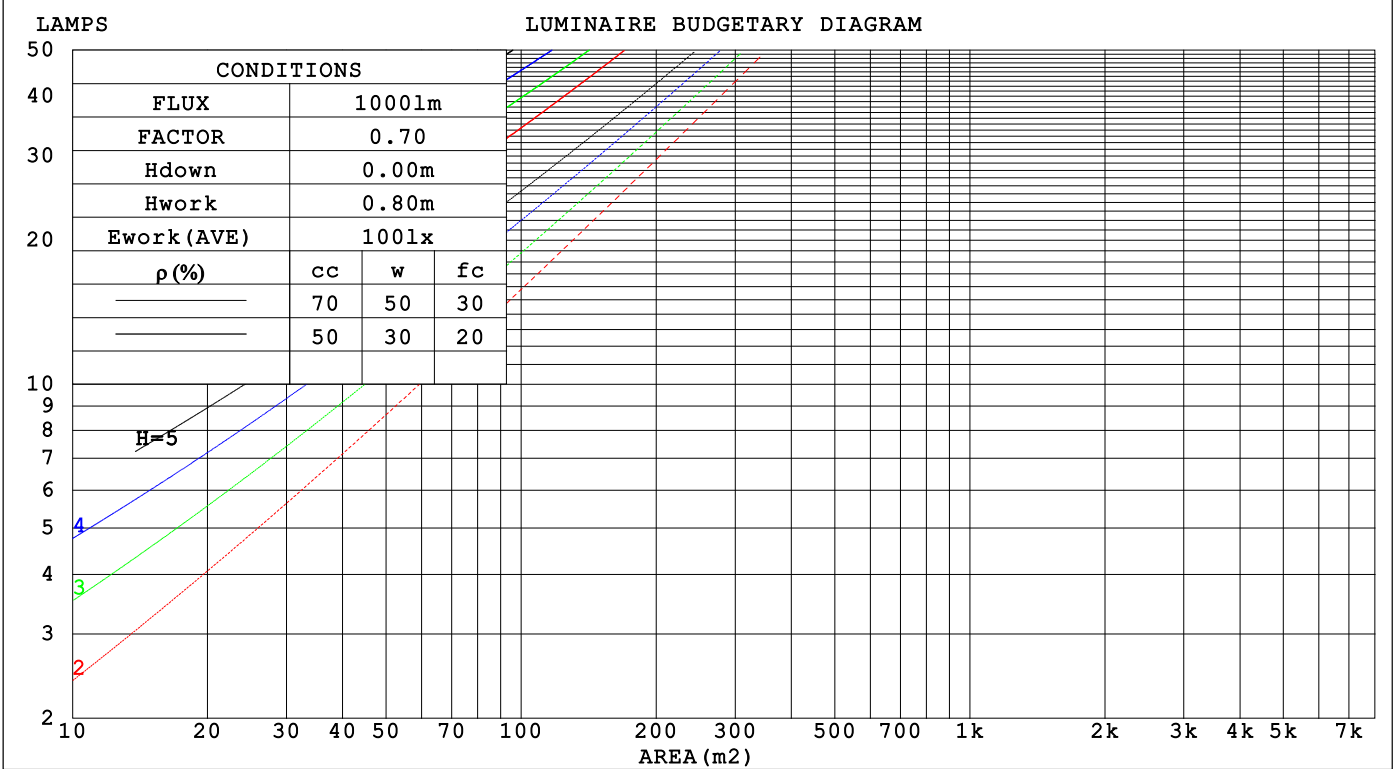
C Range: 0 - 360DEG
C Interval: 30.0DEG
Test Speed: HIGH
Temperature:25.3℃
Operators:
Test Date:2025-03-17

γ Range: 0 - 180DEG
γ Interval: 1.0DEG
Test System:EVERFINE GO-2000B_V1 SYSTEM V2.00.488
Humidity:65.0%
Test Distance:6.360m [K=1.0000]
Remarks:

CU AND LUMINAIRE BUDGETARY ESTIMATE DIAGRAM

Test:U:24.00V I:0.5253A P:12.61W PF:1.000 Freq:0Hz		
Lamp Flux:286.54lx1 lm		
NAME: SF18-24V-5050-72-RGB-ALL	TYPE:	WEIGHT:
SPEC.:	DIM.: Length=1m	SERIAL No.:
MFR.: OLympia lighting	SUR.:	Shielding Angle:

pcc	80%			70%			50%			30%			10%			0
p _w	50%	30%	10%	50%	30%	10%	50%	30%	10%	50%	30%	10%	50%	30%	10%	0
p _{fc}	20%			20%			20%			20%			20%			0
RCR	RCR:Room Cavity Ratio															



C Range: 0 - 360DEG
C Interval: 30.0DEG
Test Speed: HIGH
Temperature:25.3℃
Operators:
Test Date:2025-03-17

γ Range: 0 - 180DEG
γ Interval: 1.0DEG
Test System:EVERFINE GO-2000B_V1 SYSTEM V2.00.488
Humidity:65.0%
Test Distance:6.360m [K=1.0000]
Remarks:

WEC AND CCEC

Test:U:24.00V I:0.5253A P:12.61W PF:1.000 Freq:0Hz Lamp Flux:286.54lx1 lm		
NAME: SF18-24V-5050-72-RGB-ALL	TYPE:	WEIGHT:
SPEC.:	DIM.: Length=1m	SERIAL No.:
MFR.: OLympia lighting	SUR.:	Shielding Angle:

pcc	80%			70%			50%			30%			10%			0	
pw	50%	30%	10%	50%	30%	10%	50%	30%	10%	50%	30%	10%	50%	30%	10%	0	
pfc	20%			20%			20%			20%			20%			0	
RCR	RCR:Room Cavity Ratio						Wall Exitance Coefficients(WEC)										
0.0																	
1.0	.383	.218	.069	.368	.210	.067	.339	.195	.062	.313	.181	.058	.289	.167	.054		
2.0	.332	.182	.056	.318	.175	.054	.292	.162	.050	.268	.150	.047	.246	.139	.044		
3.0	.294	.157	.047	.282	.151	.045	.258	.140	.043	.237	.130	.040	.216	.120	.037		
4.0	.265	.138	.040	.253	.133	.039	.232	.123	.037	.212	.114	.034	.194	.105	.032		
5.0	.241	.123	.036	.230	.118	.034	.211	.110	.032	.192	.102	.030	.175	.094	.028		
6.0	.220	.110	.032	.211	.107	.031	.193	.099	.029	.176	.092	.027	.161	.085	.025		
7.0	.203	.100	.028	.194	.097	.028	.178	.090	.026	.163	.083	.024	.148	.077	.023		
8.0	.188	.092	.026	.180	.089	.025	.165	.083	.024	.151	.076	.022	.137	.071	.021		
9.0	.175	.085	.024	.168	.082	.023	.154	.076	.022	.141	.071	.020	.128	.065	.019		
10.0	.164	.079	.022	.157	.076	.021	.144	.071	.020	.132	.066	.019	.120	.060	.017		

pcc	80%			70%			50%			30%			10%			0
pw	50%	30%	10%	50%	30%	10%	50%	30%	10%	50%	30%	10%	50%	30%	10%	0
pfc	20%			20%			20%			20%			20%			0
RCR	RCR:Room Cavity Ratio						Ceiling Cavity Exitance Coefficients (CCEC)									
0.0	.391	.391	.391	.334	.334	.334	.228	.228	.228	.131	.131	.131	.042	.042	.042	
1.0	.388	.358	.331	.332	.307	.285	.227	.211	.197	.131	.122	.115	.042	.039	.037	
2.0	.381	.336	.297	.327	.289	.257	.224	.200	.179	.129	.116	.105	.041	.038	.034	
3.0	.374	.319	.276	.321	.276	.239	.220	.191	.168	.127	.112	.099	.041	.036	.032	
4.0	.367	.307	.262	.315	.265	.228	.216	.185	.160	.125	.108	.095	.040	.035	.031	
5.0	.359	.298	.252	.308	.258	.219	.212	.180	.155	.123	.106	.092	.040	.034	.030	
6.0	.352	.290	.245	.302	.251	.214	.209	.176	.151	.121	.103	.090	.039	.034	.030	
7.0	.345	.283	.240	.297	.246	.209	.205	.172	.148	.119	.101	.088	.038	.033	.029	
8.0	.338	.278	.237	.291	.241	.206	.201	.169	.146	.117	.100	.087	.038	.033	.029	
9.0	.332	.273	.234	.286	.237	.204	.198	.167	.145	.115	.098	.086	.037	.032	.029	
10.0	.326	.269	.231	.281	.234	.202	.195	.164	.143	.114	.097	.086	.037	.032	.028	

C Range: 0 - 360DEG
C Interval: 30.0DEG
Test Speed: HIGH
Temperature:25.3℃
Operators:
Test Date:2025-03-17

γ Range: 0 - 180DEG
γ Interval: 1.0DEG
Test System:EVERFINE GO-2000B_V1 SYSTEM V2.00.488
Humidity:65.0%
Test Distance:6.360m [K=1.0000]
Remarks:

UGR(Unified Glare Rating) Table

Test:U:24.00V I:0.5253A P:12.61W PF:1.000 Freq:0Hz Lamp Flux:286.54lx1 lm										
NAME: SF18-24V-5050-72-RGB-ALL					TYPE:			WEIGHT:		
SPEC.:					DIM.: Length=1m			SERIAL No.:		
MFR.: OLympia lighting					SUR.:			Shielding Angle:		
ceiling/cavity	0.7	0.7	0.5	0.5	0.3	0.7	0.7	0.5	0.5	0.3
walls	0.5	0.3	0.5	0.3	0.3	0.5	0.3	0.5	0.3	0.3
working plane	0.2	0.2	0.2	0.2	0.2	0.2	0.2	0.2	0.2	0.2
Room dimensions	Viewed crosswise					Viewed endwise				
x = 2H y = 2H	22.0	23.3	22.6	23.9	24.6	18.8	20.1	19.4	20.7	21.5
3H	24.8	26.0	25.5	26.7	27.4	20.5	21.7	21.2	22.3	23.1
4H	26.3	27.5	27.0	28.1	28.9	21.3	22.4	21.9	23.1	23.9
6H	28.0	29.0	28.7	29.7	30.5	21.9	23.0	22.6	23.7	24.5
8H	28.9	29.9	29.6	30.6	31.4	22.2	23.2	22.9	23.9	24.7
12H	29.9	30.9	30.6	31.6	32.4	22.4	23.4	23.1	24.1	24.9
4H 2H	22.5	23.6	23.1	24.3	25.1	20.2	21.4	20.9	22.0	22.8
3H	25.6	26.6	26.3	27.3	28.1	22.1	23.1	22.8	23.8	24.6
4H	27.3	28.2	28.0	28.9	29.8	23.0	23.9	23.8	24.7	25.5
6H	29.1	29.9	29.9	30.7	31.6	23.9	24.7	24.6	25.4	26.3
8H	30.2	30.9	30.9	31.7	32.6	24.2	25.0	25.0	25.7	26.6
12H	31.3	32.0	32.1	32.8	33.7	24.5	25.2	25.3	26.0	26.9
8H 4H	27.6	28.3	28.3	29.1	30.0	24.3	25.0	25.0	25.8	26.7
6H	29.7	30.4	30.5	31.1	32.1	25.4	26.1	26.2	26.8	27.8
8H	31.0	31.5	31.8	32.3	33.3	26.0	26.5	26.8	27.3	28.3
12H	32.4	32.9	33.2	33.7	34.7	26.4	26.9	27.3	27.7	28.7
12H 4H	27.6	28.3	28.3	29.0	30.0	24.7	25.4	25.4	26.1	27.1
6H	29.8	30.4	30.6	31.2	32.2	26.0	26.6	26.8	27.4	28.4
8H	31.2	31.7	32.0	32.5	33.5	26.7	27.2	27.6	28.0	29.0
Variations with the observer position at spacings(CIE Pub.117):										
S = 1.0H	+ 0.1 / - 0.1					+ 0.1 / - 0.1				
1.5H	+ 0.2 / - 0.2					+ 0.2 / - 0.3				
2.0H	+ 0.2 / - 0.3					+ 0.2 / - 0.4				

CIE Pub.117, 286.5 lm Total Lamp Luminous Flux Correct (8log(F/F0) = -4.3)
Area: 0.0165 m2

C Range: 0 - 360DEG
C Interval: 30.0DEG
Test Speed: HIGH
Temperature:25.3℃
Operators:
Test Date:2025-03-17

γ Range: 0 - 180DEG
γ Interval: 1.0DEG
Test System:EVERFINE GO-2000B_V1 SYSTEM V2.00.488
Humidity:65.0%
Test Distance:6.360m [K=1.0000]
Remarks:

UTILIZATION FACTORS TABLE

Test:U:24.00V I:0.5253A P:12.61W PF:1.000 Freq:0Hz Lamp Flux:286.54lx1 lm		
NAME: SF18-24V-5050-72-RGB-ALL	TYPE:	WEIGHT:
SPEC.:	DIM.: Length=1m	SERIAL No.:
MFR.: OLympia lighting	SUR.:	Shielding Angle:

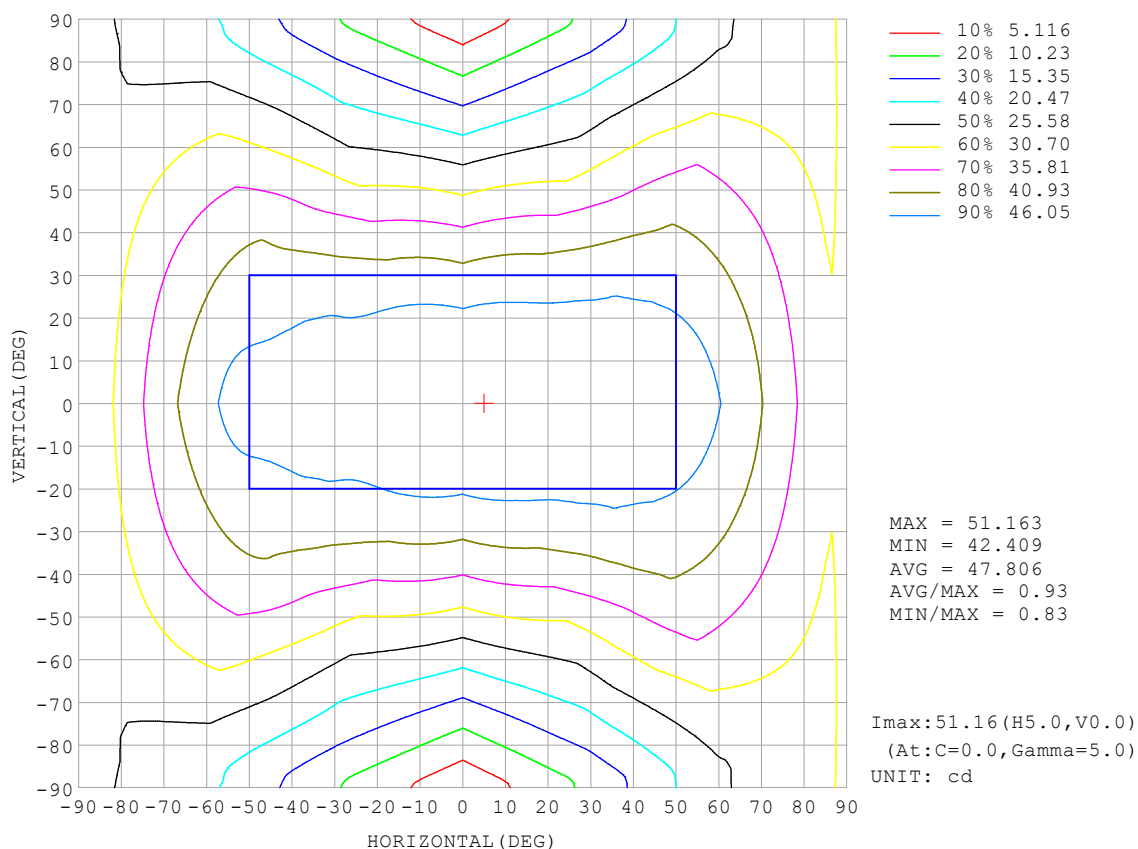
REFLECTANCE										
Ceiling	0.8	0.8	0.8	0.7	0.7	0.7	0.5	0.5	0.5	0
Walls	0.7	0.5	0.3	0.7	0.5	0.3	0.7	0.5	0.3	0
Working plane	0.2	0.2	0.2	0.2	0.2	0.2	0.2	0.2	0.2	0
ROOM INDEX	UTILIZATION FACTORS (PERCENT) $k(RI) \times RCR = 5$									
$k = 0.60$	45	32	25	43	32	25	41	30	24	17
0.80	54	41	32	52	40	32	49	38	31	22
1.00	61	48	40	59	47	39	55	47	37	28
1.25	68	55	47	66	54	46	60	50	43	33
1.50	74	61	52	70	59	51	65	55	48	36
2.00	81	70	61	77	67	59	71	62	56	42
2.50	86	75	67	82	72	65	74	67	60	46
3.00	89	80	72	85	77	70	77	70	65	49
4.00	94	86	79	90	82	76	81	75	70	54
5.00	97	90	84	93	86	81	84	79	74	56
ROOM INDEX	UF (total)									Direct
According to DIN EN 13032-2 2004			Suspended					SHRNOM = 1.25		

C Range: 0 - 360DEG
 C Interval: 30.0DEG
 Test Speed: HIGH
 Temperature: 25.3°C
 Operators:
 Test Date: 2025-03-17

γ Range: 0 - 180DEG
 γ Interval: 1.0DEG
 Test System: EVERFINE GO-2000B_V1 SYSTEM V2.00.488
 Humidity: 65.0%
 Test Distance: 6.360m [K=1.0000]
 Remarks:

ISOCANDELA DIAGRAM

Test:U:24.00V I:0.5253A P:12.61W PF:1.000 Freq:0Hz Lamp Flux:286.54lx1 lm		
NAME: SF18-24V-5050-72-RGB-ALL	TYPE:	WEIGHT:
SPEC.:	DIM.: Length=1m	SERIAL No.:
MFR.: OLympia lighting	SUR.:	Shielding Angle:

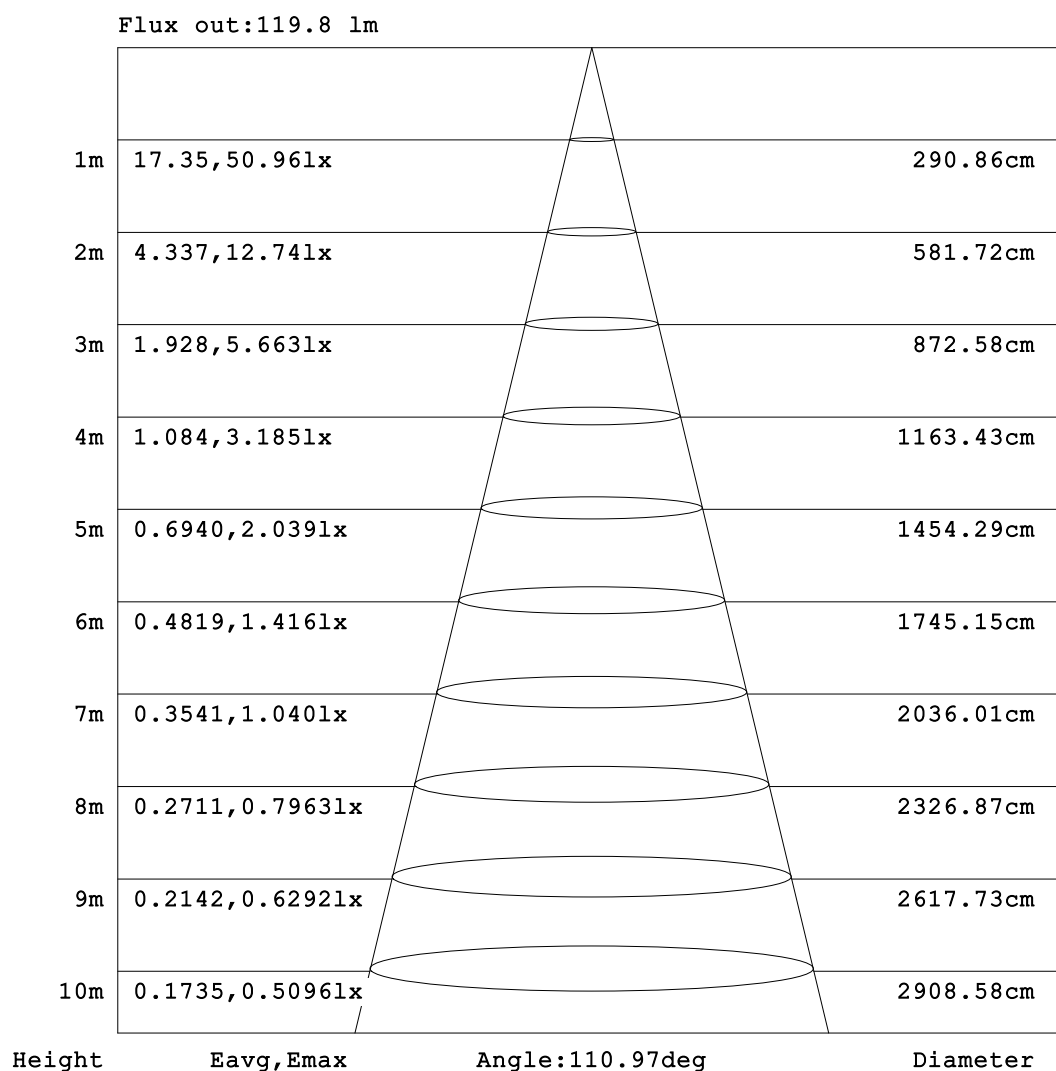


C Range: 0 - 360DEG
C Interval: 30.0DEG
Test Speed: HIGH
Temperature: 25.3°C
Operators:
Test Date: 2025-03-17

γ Range: 0 - 180DEG
γ Interval: 1.0DEG
Test System: EVERFINE GO-2000B_V1 SYSTEM V2.00.488
Humidity: 65.0%
Test Distance: 6.360m [K=1.0000]
Remarks:

AAI Figure

Test:U:24.00V I:0.5253A P:12.61W PF:1.000 Freq:0Hz Lamp Flux:286.54lx1 lm		
NAME: SF18-24V-5050-72-RGB-ALL	TYPE:	WEIGHT:
SPEC.:	DIM.: Length=1m	SERIAL No.:
MFR.: OLympia lighting	SUR.:	Shielding Angle:



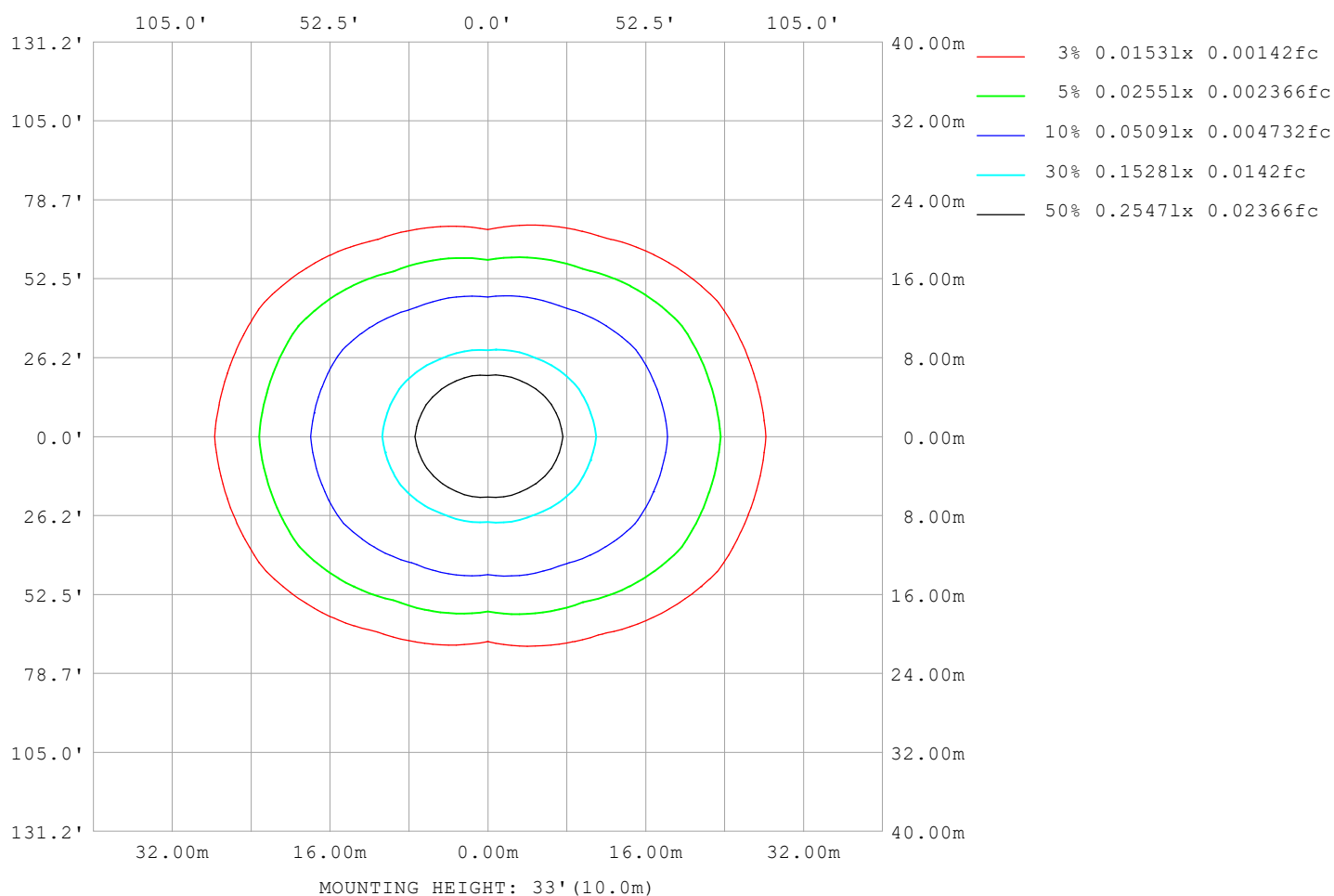
Note:The Curves indicate the illuminated area and the average illumination when the luminaire is at different distance.

C Range: 0 - 360DEG
C Interval: 30.0DEG
Test Speed: HIGH
Temperature:25.3℃
Operators:
Test Date:2025-03-17

γ Range: 0 - 180DEG
γ Interval: 1.0DEG
Test System:EVERFINE GO-2000B_V1 SYSTEM V2.00.488
Humidity:65.0%
Test Distance:6.360m [K=1.0000]
Remarks:

ISOLUX DIAGRAM

Test:U:24.00V I:0.5253A P:12.61W PF:1.000 Freq:0Hz Lamp Flux:286.54lx1 lm		
NAME: SF18-24V-5050-72-RGB-ALL	TYPE:	WEIGHT:
SPEC.:	DIM.: Length=1m	SERIAL No.:
MFR.: OLympia lighting	SUR.:	Shielding Angle:



C Range: 0 - 360DEG
C Interval: 30.0DEG
Test Speed: HIGH
Temperature:25.3℃
Operators:
Test Date:2025-03-17

γ Range: 0 - 180DEG
γ Interval: 1.0DEG
Test System:EVERFINE GO-2000B_V1 SYSTEM V2.00.488
Humidity:65.0%
Test Distance:6.360m [K=1.0000]
Remarks:

LED Avg.L Report

Test:U:24.00V I:0.5253A P:12.61W PF:1.000 Freq:0Hz Lamp Flux:286.54lx1 lm		
NAME: SF18-24V-5050-72-RGB-ALL	TYPE:	WEIGHT:
SPEC.:	DIM.: Length=1m	SERIAL No.:
MFR.: OLympia lighting	SUR.:	Shielding Angle:

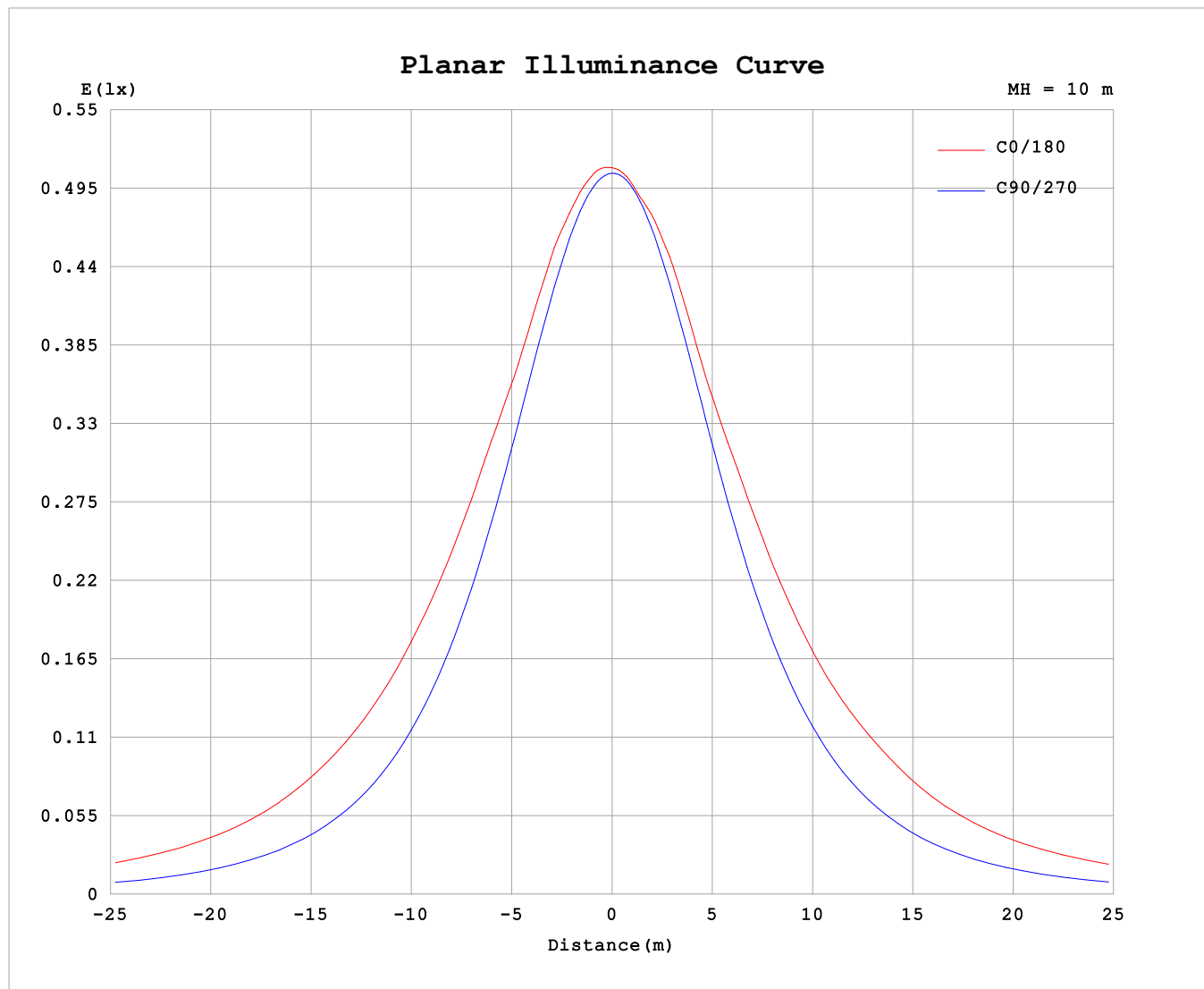
AvgL	cd/m2
L_0~180 (65) av	6109
L_0~180 (75) av	8576
L_0~180 (85) av	20850
L_90~270 (65) av	2662
L_90~270 (75) av	2632
L_90~270 (85) av	3002
L_45 (65) av	4548
L_45 (75) av	6118
L_45 (85) av	13654

Standard: GB/T 29293-2012

C Range: 0 - 360DEG
C Interval: 30.0DEG
Test Speed: HIGH
Temperature:25.3℃
Operators:
Test Date:2025-03-17

γ Range: 0 - 180DEG
γ Interval: 1.0DEG
Test System:EVERFINE GO-2000B_V1 SYSTEM V2.00.488
Humidity:65.0%
Test Distance:6.360m [K=1.0000]
Remarks:

Planar Illuminance Curve



C Range: 0 - 360DEG
C Interval: 30.0DEG
Test Speed: HIGH
Temperature: 25.3 °C
Operators:
Test Date: 2025-03-17

γ Range: 0 - 180DEG
 γ Interval: 1.0DEG
Test System: EVERFINE GO-2000B_V1 SYSTEM V2.00.488
Humidity: 65.0%
Test Distance: 6.360m [K=1.0000]
Remarks:

LUMINOUS DISTRIBUTION INTENSITY DATA

Test:U:24.00V I:0.5253A P:12.61W PF:1.000 Freq:0Hz Lamp Flux:286.54lx1 lm																	
NAME: SF18-24V-5050-72-RGB-ALL									TYPE:						WEIGHT:		
SPEC.:									DIM.: Length=1m						SERIAL No.:		
MFR.: OLYMPIA lighting									SUR.:						Shielding Angle:		

Table--1

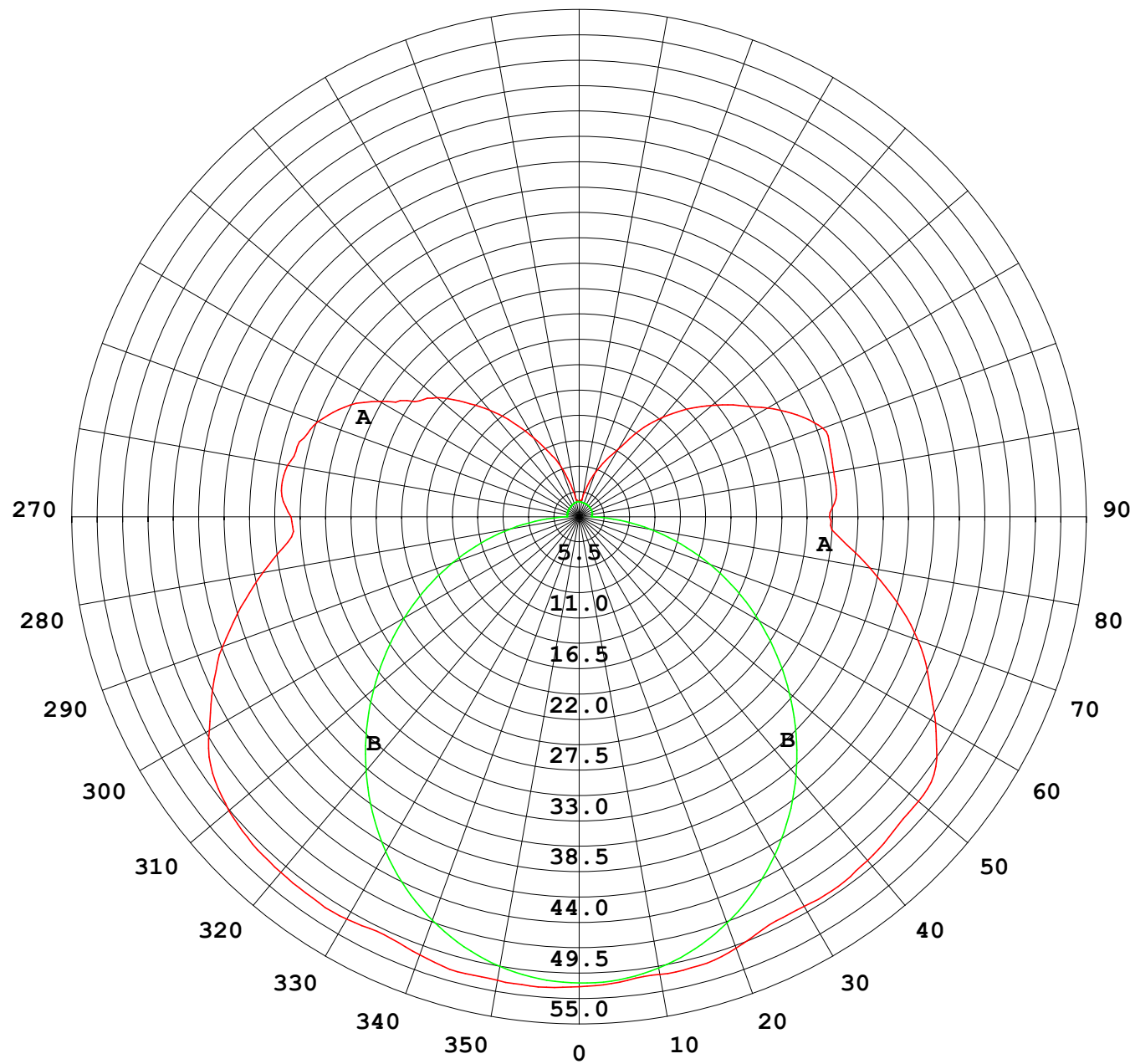
UNIT: cd

C (DEG) γ (DEG)	0	30	60	90	120	150	180	210	240	270	300	330						
0	50.7	50.7	50.7	50.7	50.7	50.7	50.7	50.7	50.7	50.7	50.7	50.7						
5	50.9	50.8	50.6	50.4	50.3	50.3	50.4	50.4	50.4	50.5	50.6	50.9						
10	50.8	50.6	50.1	49.6	49.6	49.9	50.1	49.8	49.7	49.8	50.3	50.7						
15	50.8	50.2	49.1	48.4	48.4	49.6	50.1	49.7	48.7	48.6	49.3	50.4						
20	50.3	49.7	47.8	46.7	47.4	49.0	49.5	49.2	47.7	47.0	48.1	49.9						
25	49.8	48.7	46.3	44.5	46.0	47.7	48.6	47.9	46.4	44.9	46.7	48.9						
30	50.1	47.7	44.5	42.1	44.1	46.6	48.5	46.7	44.6	42.5	45.0	48.0						
35	50.2	47.3	42.3	39.2	41.7	46.0	48.7	46.2	42.3	39.7	42.9	47.7						
40	50.1	46.4	39.8	36.0	38.9	45.2	48.4	45.4	39.6	36.7	40.4	46.8						
45	49.9	45.3	37.0	32.7	36.1	44.0	47.9	44.3	36.8	33.4	37.7	45.8						
50	49.3	44.2	34.0	29.2	33.2	42.7	47.8	42.9	33.8	29.8	34.7	44.7						
55	48.3	42.8	30.6	25.5	30.0	41.2	47.0	41.4	30.6	26.2	31.4	43.2						
60	46.1	40.9	27.8	21.9	27.0	39.7	44.4	40.0	27.6	22.6	28.5	41.4						
65	43.6	38.8	25.2	18.3	24.3	37.1	41.6	37.4	24.8	18.8	25.9	39.3						
70	40.9	36.3	22.6	14.6	21.7	34.1	38.9	34.3	22.1	15.1	23.3	36.7						
75	37.8	32.8	19.9	11.0	19.1	31.1	35.5	31.2	19.4	11.4	20.5	33.2						
80	34.6	29.5	17.0	7.55	16.3	27.4	31.8	27.4	16.5	7.89	17.5	29.8						
85	31.5	26.3	13.9	4.19	13.1	23.7	28.4	23.7	13.3	4.44	14.3	26.5						
90	31.1	24.9	11.5	1.32	10.7	21.6	27.0	21.4	10.6	1.37	11.7	24.9						
95	32.2	25.8	11.6	1.33	10.4	22.3	27.9	22.0	10.3	1.38	11.9	25.8						
100	31.9	26.7	9.76	1.34	10.0	23.7	27.9	23.4	9.98	1.43	10.2	26.5						
105	31.2	25.3	8.93	1.35	9.84	24.1	28.0	23.9	9.82	1.48	9.38	26.0						
110	30.0	23.4	7.96	1.36	9.85	22.8	28.0	22.6	9.83	1.51	9.31	23.9						
115	28.0	20.7	8.88	1.37	9.72	20.8	26.0	20.6	9.72	1.53	8.97	21.7						
120	24.9	18.2	8.10	1.38	9.00	18.8	23.5	18.7	9.03	1.54	8.33	19.1						
125	21.7	17.6	6.87	1.39	8.08	17.1	21.0	17.0	8.15	1.56	7.03	18.0						
130	20.0	15.8	6.13	1.41	6.99	15.3	18.7	15.2	7.05	1.57	6.42	16.0						
135	17.5	12.7	5.09	1.43	6.02	13.4	16.5	13.3	6.07	1.58	5.30	13.0						
140	15.0	9.97	4.13	1.46	5.11	11.3	14.0	11.3	5.15	1.58	4.36	10.00						
145	12.4	7.48	3.51	1.48	4.26	9.10	11.4	9.05	4.19	1.58	3.64	7.71						
150	9.84	5.87	2.81	1.51	3.40	7.27	8.37	7.07	3.45	1.58	2.94	5.81						
155	7.62	4.55	2.33	1.54	2.84	5.74	6.65	5.35	2.91	1.58	2.32	4.54						
160	5.72	3.24	2.05	1.59	2.46	4.25	5.04	4.19	2.47	1.59	2.06	3.29						
165	3.56	2.26	1.89	1.62	2.13	3.08	3.43	3.02	2.10	1.60	1.85	2.24						
170	1.93	1.90	1.81	1.65	1.99	2.30	1.95	2.28	1.95	1.63	1.79	1.93						
175	1.74	1.79	1.76	1.67	1.94	2.00	1.76	2.01	1.89	1.64	1.72	1.82						
180	1.67	1.74	1.70	1.68	1.71	1.73	1.68	1.75	1.71	1.67	1.70	1.73						

C Range: 0 - 360DEG
C Interval: 30.0DEG
Test Speed: HIGH
Temperature:25.3℃
Operators:
Test Date:2025-03-17

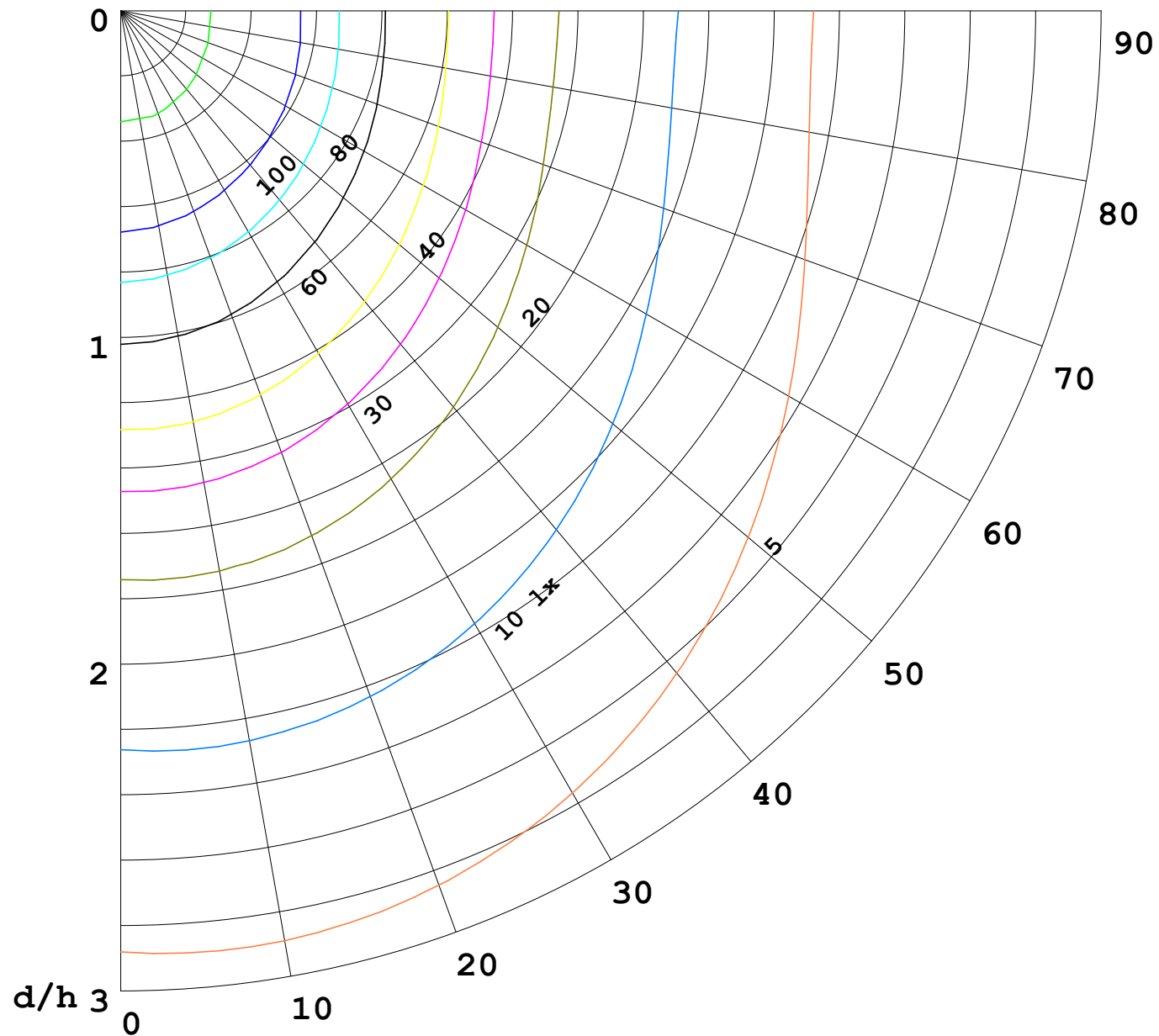
γ Range: 0 - 180DEG
γ Interval: 1.0DEG
Test System:EVERFINE GO-2000B_V1 SYSTEM V2.00.488
Humidity:65.0%
Test Distance:6.360m [K=1.0000]
Remarks:

I (cd)



1000 lm

$\kappa = 1$



F = 1000 lm
 K = 0.7
 Hcc = 0.8 m
 Hfc = 0.0 m
 Eave = 100 lx

	Pcc	Pw	Pfc
—————	70	50	30
—————	50	30	20

