

LUMINAIRE PHOTOMETRIC TEST REPORT

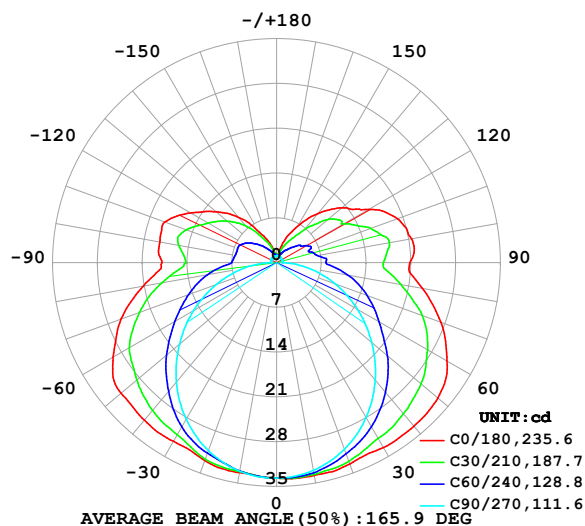
Test:U:24.00V I:0.1838A P:4.411W PF:1.000 Freq:0Hz

Lamp Flux:190.659x1 lm

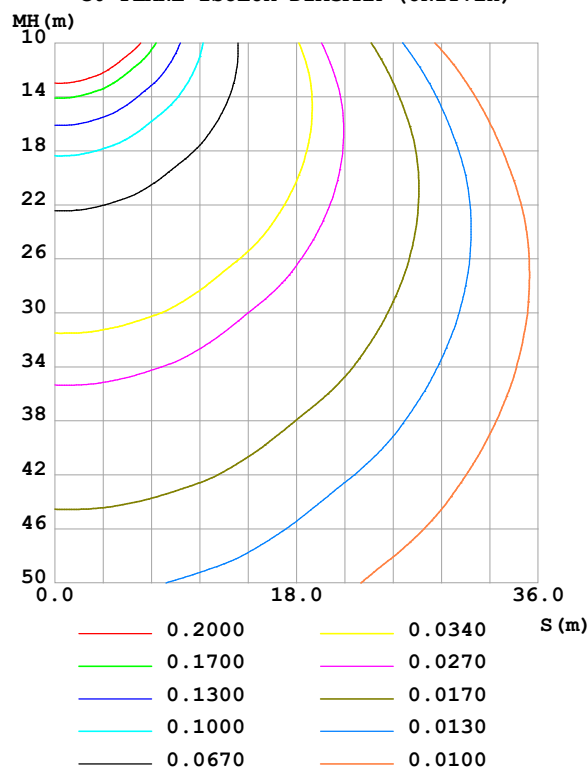
NAME: SF18-24V-5050-72-RGB-G	TYPE:	WEIGHT:
SPEC.:	DIM.: Length=1m	SERIAL No.:
MFR.: Olym pia lighting	SUR.:	Shielding Angle:

DATA OF LAMP		PHOTOMETRIC DATA				Eff: 43.22 lm/W
MODEL	5050	Imax (cd)	33.86	S/MH(C0/180)	1.48	
NOMINAL POWER(W)		LOR(%)	100.0	S/MH(C90/270)	1.25	
RATED VOLTAGE(V)	24	TOTAL FLUX(lm)	190.66	η UP,DN(C0-180)	13.3,36.8	
NOMINAL FLUX(lm)	190.659	CIE CLASS	SEMI-D.	η UP,DN(C180-360)	13.0,36.8	
LAMPS INSIDE	1	η up (%)	26.4	CIBSE SHR NOM	1.50	
TEST VOLTAGE(V)		η down (%)	73.6	CIBSE SHR MAX	1.55	

LUMINOUS INTENSITY DISTRIBUTION DIAGRAM



C0 PLANE ISOLUX DIAGRAM (UNIT:lx)



C Range: 0 - 360DEG
C Interval: 30.0DEG
Test Speed: HIGH
Temperature:25.3℃
Operators:
Test Date:2025-03-17

γ Range: 0 - 180DEG
 γ Interval: 1.0DEG
Test System:EVERFINE GO-2000B_V1 SYSTEM V2.00.488
Humidity:65.0%
Test Distance:6.360m [K=1.0000]
Remarks:

ZONAL FLUX DIAGRAM

ZONAL FLUX DIAGRAM:

γ	C0	C45	C90	C135	C180	C225	C270	C315	γ	Φ zone	Φ total	%lum, lamp
10	33.79	33.50	32.99	33.05	33.35	33.12	33.12	33.58	0- 10	3.198	3.198	1.68,1.68
20	33.49	32.43	31.04	32.08	32.91	32.19	31.26	32.60	10- 20	9.300	12.50	6.56,6.56
30	33.38	30.70	27.98	30.15	32.27	30.37	28.29	30.98	20- 30	14.51	27.01	14.2,14.2
40	33.38	28.68	24.00	27.97	32.16	28.23	24.38	29.03	30- 40	18.55	45.56	23.9,23.9
50	32.91	26.06	19.41	25.20	31.75	25.52	19.84	26.44	40- 50	21.04	66.60	34.9,34.9
60	30.76	22.89	14.61	22.19	29.52	22.48	15.00	23.30	50- 60	21.76	88.36	46.3,46.3
70	27.32	19.67	9.763	18.54	25.86	18.72	10.04	20.00	60- 70	20.62	109.0	57.2,57.2
80	23.13	15.52	5.054	14.49	21.17	14.60	5.232	15.79	70- 80	17.74	126.7	66.5,66.5
90	20.84	12.21	0.8931	10.74	17.95	10.64	0.9185	12.26	80- 90	13.66	140.4	73.6,73.6
100	21.43	12.21	0.8989	11.20	18.56	11.09	0.9422	12.28	90-100	12.25	152.6	80.1,80.1
110	20.12	10.49	0.9105	10.82	18.58	10.77	0.9942	11.07	100-110	11.66	164.3	86.2,86.2
120	16.68	8.765	0.9279	9.200	15.57	9.182	1.017	9.132	110-120	9.751	174.1	91.3,91.3
130	13.38	7.325	0.9423	7.382	12.42	7.381	1.035	7.482	120-130	7.264	181.3	95.1,95.1
140	10.04	4.734	0.9712	5.429	9.268	5.433	1.038	4.799	130-140	4.829	186.2	97.6,97.6
150	6.574	2.914	1.009	3.525	5.561	3.413	1.038	2.891	140-150	2.667	188.8	99,99
160	3.814	1.755	1.061	2.217	3.325	2.201	1.046	1.741	150-160	1.251	190.1	99.7,99.7
170	1.278	1.229	1.090	1.415	1.271	1.400	1.067	1.232	160-170	0.4737	190.5	99.9,99.9
180	1.113	1.133	1.110	1.139	1.116	1.144	1.098	1.131	170-180	0.1162	190.7	100,100
DEG	LUMINOUS INTENSITY:cd									UNIT:lm		

Conical surface Flux(90deg): 55.871 lm

%lum = 29.3%

%lamp = 29.3%

Conical surface Flux(130deg): 98.928 lm

%lum = 51.9%

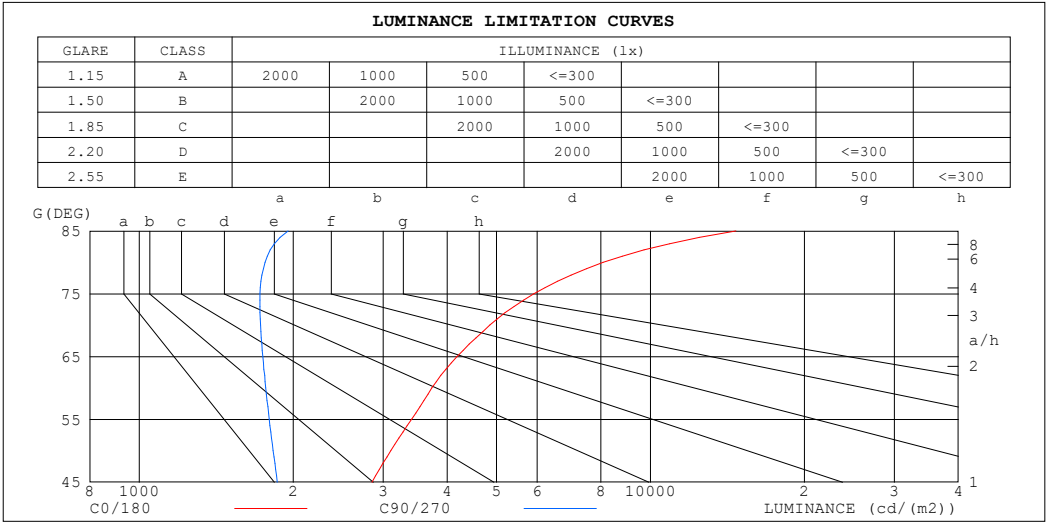
%lamp = 51.9%

C Range: 0 - 360DEG
 C Interval: 30.0DEG
 Test Speed: HIGH
 Temperature:25.3℃
 Operators:
 Test Date:2025-03-17

γ Range: 0 - 180DEG
 γ Interval: 1.0DEG
 Test System:EVERFINE GO-2000B_V1 SYSTEM V2.00.488
 Humidity:65.0%
 Test Distance:6.360m [K=1.0000]
 Remarks:

LUMINANCE LIMITATION CURVES

Test:U:24.00V I:0.1838A P:4.411W PF:1.000 Freq:0Hz Lamp Flux:190.659x1 lm		
NAME: SF18-24V-5050-72-RGB-G	TYPE:	WEIGHT:
SPEC.:	DIM.: Length=1m	SERIAL No.:
MFR.: OLympia lighting	SUR.:	Shielding Angle:



LUMINANCE cd/(m2)		
G (DEG)	C0/180	C90/270
85	14700	1956
80	8081	1761
75	5917	1723
70	4846	1727
65	4183	1744
60	3733	1768
55	3408	1796
50	3107	1827
45	2854	1862

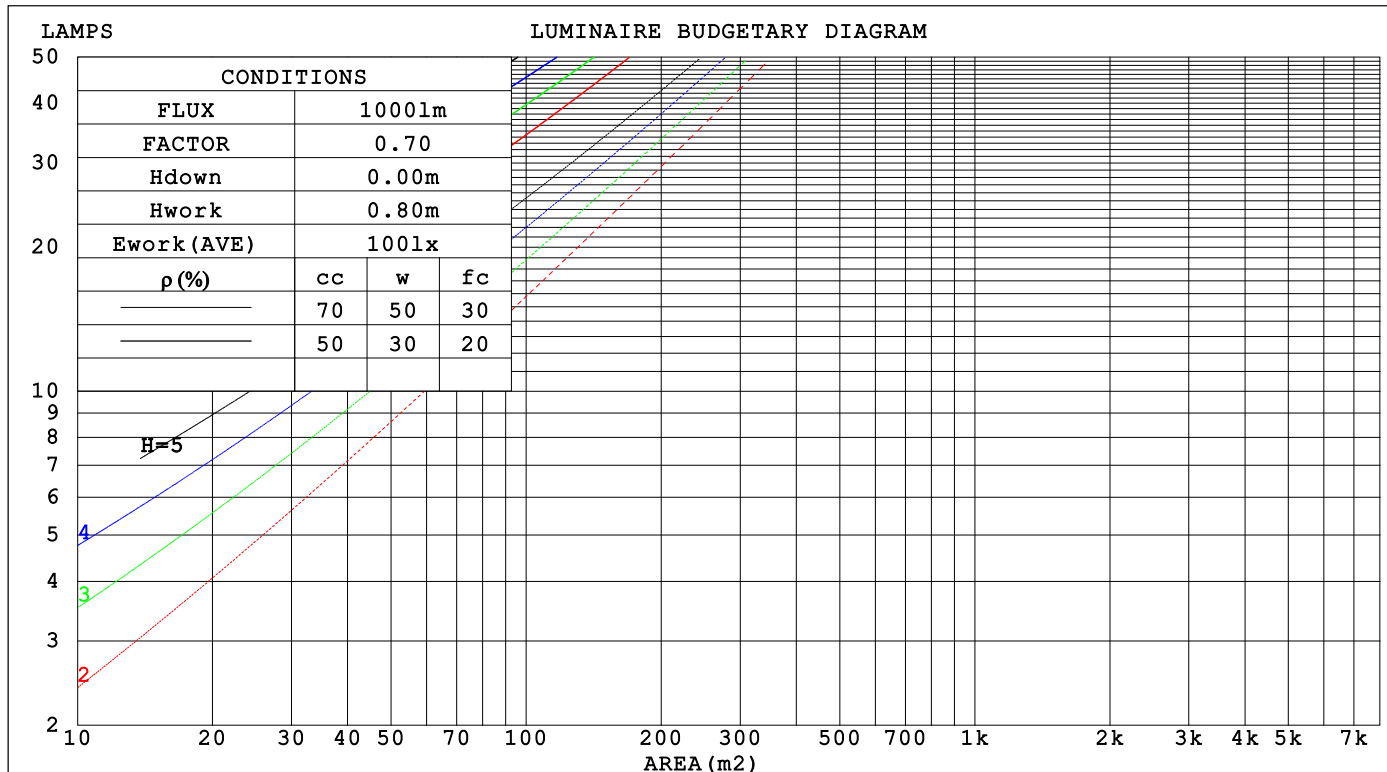
C Range: 0 - 360DEG
C Interval: 30.0DEG
Test Speed: HIGH
Temperature:25.3℃
Operators:
Test Date:2025-03-17

γ Range: 0 - 180DEG
γ Interval: 1.0DEG
Test System:EVERFINE GO-2000B_V1 SYSTEM V2.00.488
Humidity:65.0%
Test Distance:6.360m [K=1.0000]
Remarks:

CU AND LUMINAIRE BUDGETARY ESTIMATE DIAGRAM

Test:U:24.00V I:0.1838A P:4.411W PF:1.000 Freq:0Hz Lamp Flux:190.659x1 lm		
NAME: SF18-24V-5050-72-RGB-G	TYPE:	WEIGHT:
SPEC.:	DIM.: Length=1m	SERIAL No.:
MFR.: OLympia lighting	SUR.:	Shielding Angle:

pcc	80%			70%			50%			30%			10%			0														
p _w	50%	30%	10%	50%	30%	10%	50%	30%	10%	50%	30%	10%	50%	30%	10%	0														
p _{fc}	20%			20%			20%			20%			20%			0														
RCR	RCR:Room Cavity Ratio															Coefficients of Utilization(CU)														
0.0	1.13	1.13	1.13	1.07	1.07	1.07	.96	.96	.96	.87	.87	.87	.78	.78	.78	.74														
1.0	.94	.88	.84	.89	.84	.80	.80	.76	.72	.71	.68	.65	.63	.61	.59	.55														
2.0	.80	.72	.66	.76	.69	.63	.68	.62	.57	.61	.56	.52	.54	.50	.47	.43														
3.0	.69	.60	.53	.66	.57	.51	.59	.52	.47	.52	.47	.42	.47	.42	.39	.35														
4.0	.61	.51	.44	.57	.49	.42	.52	.44	.39	.46	.40	.36	.41	.36	.32	.29														
5.0	.54	.44	.37	.51	.42	.36	.46	.39	.33	.41	.35	.30	.37	.32	.28	.25														
6.0	.48	.39	.32	.46	.37	.31	.41	.34	.28	.37	.31	.26	.33	.28	.24	.21														
7.0	.43	.34	.28	.41	.33	.27	.37	.30	.25	.33	.27	.23	.30	.25	.21	.18														
8.0	.39	.30	.24	.37	.29	.24	.34	.27	.22	.30	.25	.20	.27	.22	.19	.16														
9.0	.36	.27	.22	.34	.26	.21	.31	.24	.19	.28	.22	.18	.25	.20	.17	.14														
10.0	.33	.25	.19	.31	.24	.19	.28	.22	.18	.26	.20	.16	.23	.18	.15	.13														



C Range: 0 - 360DEG
C Interval: 30.0DEG
Test Speed: HIGH
Temperature: 25.3°C
Operators:
Test Date: 2025-03-17

```

γ Range: 0 - 180DEG
γ Interval: 1.0DEG
Test System:EVERFINE GO-2000B_V1 SYSTEM V2.00.488
Humidity:65.0%
Test Distance:6.360m [K=1.0000]
Remarks:

```

WEC AND CCEC

Test:U:24.00V I:0.1838A P:4.411W PF:1.000 Freq:0Hz Lamp Flux:190.659x1 lm		
NAME: SF18-24V-5050-72-RGB-G	TYPE:	WEIGHT:
SPEC.:	DIM.: Length=1m	SERIAL No.:
MFR.: OLympia lighting	SUR.:	Shielding Angle:

pcc	80%			70%			50%			30%			10%			0
pw	50%	30%	10%	50%	30%	10%	50%	30%	10%	50%	30%	10%	50%	30%	10%	0
pfc	20%			20%			20%			20%			20%			0
RCR	RCR:Room Cavity Ratio						Wall Exitance Coefficients(WEC)									
0.0																
1.0	.383	.218	.069	.368	.210	.067	.339	.195	.062	.313	.181	.058	.289	.167	.054	
2.0	.332	.182	.056	.318	.175	.054	.292	.162	.050	.268	.150	.047	.246	.139	.044	
3.0	.294	.157	.047	.282	.151	.045	.258	.140	.043	.237	.130	.040	.216	.120	.037	
4.0	.265	.138	.040	.253	.133	.039	.232	.123	.037	.212	.114	.034	.194	.105	.032	
5.0	.241	.123	.036	.230	.118	.034	.211	.110	.032	.192	.102	.030	.175	.094	.028	
6.0	.220	.110	.032	.211	.107	.031	.193	.099	.029	.176	.092	.027	.161	.085	.025	
7.0	.203	.100	.028	.195	.097	.028	.178	.090	.026	.163	.083	.024	.148	.077	.023	
8.0	.188	.092	.026	.180	.089	.025	.165	.083	.024	.151	.076	.022	.137	.071	.021	
9.0	.175	.085	.024	.168	.082	.023	.154	.076	.022	.141	.071	.020	.128	.065	.019	
10.0	.164	.079	.022	.157	.076	.021	.144	.071	.020	.132	.066	.019	.120	.060	.017	

pcc	80%			70%			50%			30%			10%			0
pw	50%	30%	10%	50%	30%	10%	50%	30%	10%	50%	30%	10%	50%	30%	10%	0
pfc	20%			20%			20%			20%			20%			0
RCR	RCR:Room Cavity Ratio						Ceiling Cavity Exitance Coefficients (CCEC)									
0.0	.391	.391	.391	.334	.334	.334	.228	.228	.228	.131	.131	.131	.042	.042	.042	
1.0	.388	.358	.331	.332	.307	.285	.227	.211	.197	.131	.122	.115	.042	.039	.037	
2.0	.381	.336	.297	.327	.289	.257	.224	.200	.179	.129	.116	.105	.041	.038	.034	
3.0	.374	.319	.276	.321	.276	.239	.220	.191	.168	.127	.112	.099	.041	.036	.032	
4.0	.367	.307	.262	.315	.265	.227	.216	.185	.160	.125	.108	.095	.040	.035	.031	
5.0	.359	.298	.252	.308	.257	.219	.212	.180	.155	.123	.106	.092	.040	.034	.030	
6.0	.352	.290	.245	.302	.251	.214	.209	.176	.151	.121	.103	.090	.039	.034	.030	
7.0	.345	.283	.240	.297	.246	.209	.205	.172	.148	.119	.101	.088	.038	.033	.029	
8.0	.338	.278	.236	.291	.241	.206	.201	.169	.146	.117	.100	.087	.038	.033	.029	
9.0	.332	.273	.234	.286	.237	.204	.198	.167	.145	.115	.098	.086	.037	.032	.029	
10.0	.326	.269	.231	.281	.234	.202	.195	.164	.143	.114	.097	.086	.037	.032	.028	

C Range: 0 - 360DEG
C Interval: 30.0DEG
Test Speed: HIGH
Temperature:25.3℃
Operators:
Test Date:2025-03-17

γ Range: 0 - 180DEG
γ Interval: 1.0DEG
Test System:EVERFINE GO-2000B_V1 SYSTEM V2.00.488
Humidity:65.0%
Test Distance:6.360m [K=1.0000]
Remarks:

UGR(Unified Glare Rating) Table

Test:U:24.00V I:0.1838A P:4.411W PF:1.000 Freq:0Hz Lamp Flux:190.659x1 lm											
NAME: SF18-24V-5050-72-RGB-G						TYPE:		WEIGHT:			
SPEC.:						DIM.: Length=1m		SERIAL No.:			
MFR.: OLympia lighting						SUR.:		Shielding Angle:			
ceiling/cavity	0.7	0.7	0.5	0.5	0.3	0.7	0.7	0.5	0.5	0.3	
walls	0.5	0.3	0.5	0.3	0.3	0.5	0.3	0.5	0.3	0.3	
working plane	0.2	0.2	0.2	0.2	0.2	0.2	0.2	0.2	0.2	0.2	
Room dimensions		Viewed crosswise					Viewed endwise				
x = 2H y = 2H	2H	22.0	23.3	22.6	23.9	24.6	18.8	20.1	19.4	20.7	21.5
	3H	24.8	26.0	25.5	26.7	27.4	20.5	21.7	21.2	22.4	23.1
	4H	26.3	27.5	27.0	28.1	28.9	21.3	22.4	22.0	23.1	23.9
	6H	28.0	29.0	28.7	29.7	30.5	21.9	23.0	22.6	23.7	24.5
	8H	28.9	29.9	29.6	30.6	31.4	22.2	23.2	22.9	23.9	24.7
	12H	29.9	30.9	30.6	31.6	32.4	22.4	23.4	23.1	24.1	24.9
4H	2H	22.5	23.6	23.1	24.3	25.1	20.2	21.4	20.9	22.0	22.8
	3H	25.6	26.6	26.3	27.3	28.1	22.1	23.1	22.8	23.8	24.6
	4H	27.3	28.2	28.0	28.9	29.8	23.1	24.0	23.8	24.7	25.5
	6H	29.1	29.9	29.9	30.7	31.6	23.9	24.7	24.6	25.4	26.3
	8H	30.2	30.9	30.9	31.7	32.6	24.2	25.0	25.0	25.7	26.7
	12H	31.3	32.0	32.1	32.8	33.7	24.5	25.2	25.3	26.0	26.9
8H	4H	27.6	28.3	28.3	29.1	30.0	24.3	25.0	25.0	25.8	26.7
	6H	29.7	30.4	30.5	31.2	32.1	25.4	26.1	26.2	26.9	27.8
	8H	31.0	31.5	31.8	32.3	33.3	26.0	26.5	26.8	27.3	28.3
	12H	32.4	32.9	33.2	33.7	34.7	26.5	27.0	27.3	27.8	28.8
12H	4H	27.6	28.3	28.4	29.0	30.0	24.7	25.4	25.5	26.1	27.1
	6H	29.8	30.4	30.6	31.2	32.2	26.1	26.6	26.9	27.4	28.4
	8H	31.2	31.7	32.0	32.5	33.5	26.8	27.2	27.6	28.1	29.1
Variations with the observer position at spacings(CIE Pub.117):											
S = 1.0H		+ 0.1 / - 0.1					+ 0.1 / - 0.1				
1.5H		+ 0.2 / - 0.2					+ 0.2 / - 0.3				
2.0H		+ 0.2 / - 0.3					+ 0.2 / - 0.4				

CIE Pub.117, 190.7 lm Total Lamp Luminous Flux Correct (8log(F/F0) = -5.8)
Area: 0.0165 m2

C Range: 0 - 360DEG
C Interval: 30.0DEG
Test Speed: HIGH
Temperature:25.3℃
Operators:
Test Date:2025-03-17

γ Range: 0 - 180DEG
γ Interval: 1.0DEG
Test System:EVERFINE GO-2000B_V1 SYSTEM V2.00.488
Humidity:65.0%
Test Distance:6.360m [K=1.0000]
Remarks:

UTILIZATION FACTORS TABLE

Test:U:24.00V I:0.1838A P:4.411W PF:1.000 Freq:0Hz Lamp Flux:190.659x1 lm		
NAME: SF18-24V-5050-72-RGB-G	TYPE:	WEIGHT:
SPEC.:	DIM.: Length=1m	SERIAL No.:
MFR.: OLympia lighting	SUR.:	Shielding Angle:

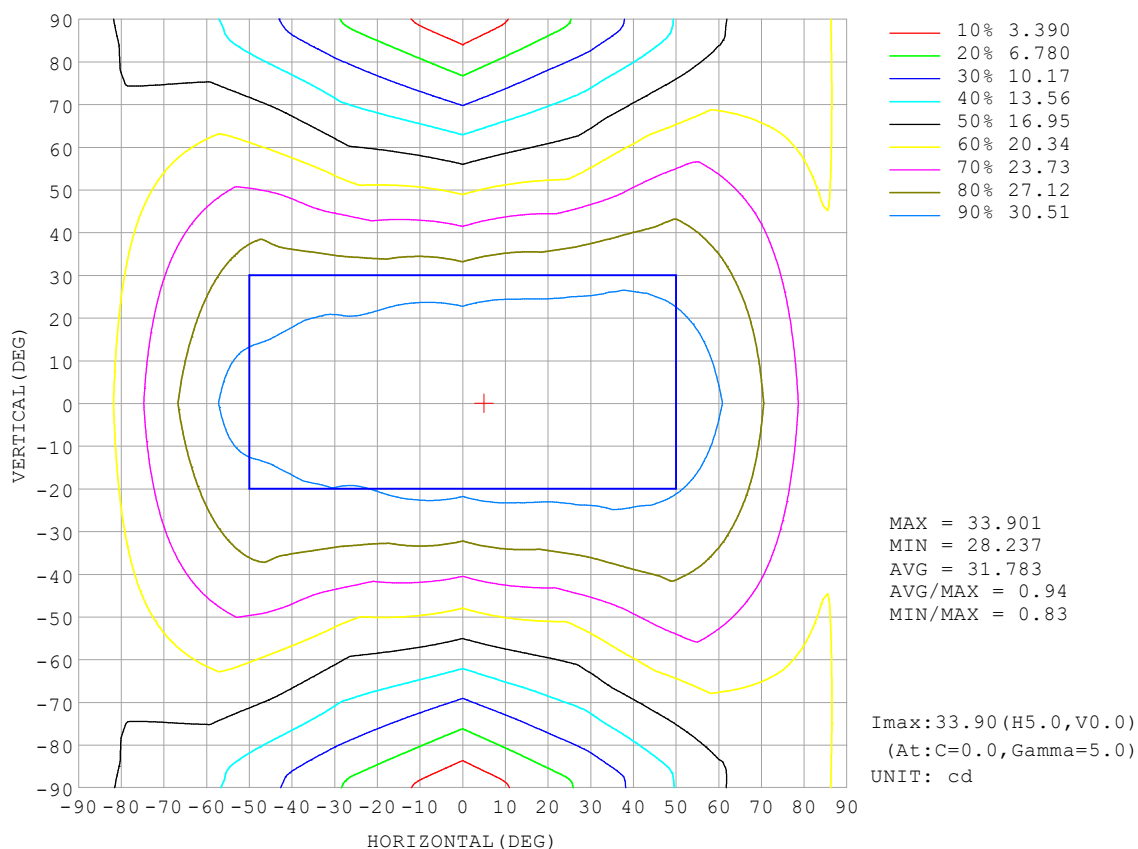
REFLECTANCE										
Ceiling	0.8	0.8	0.8	0.7	0.7	0.7	0.5	0.5	0.5	0
Walls	0.7	0.5	0.3	0.7	0.5	0.3	0.7	0.5	0.3	0
Working plane	0.2	0.2	0.2	0.2	0.2	0.2	0.2	0.2	0.2	0
ROOM INDEX	UTILIZATION FACTORS (PERCENT) $k(RI) \times RCR = 5$									
$k = 0.60$	45	32	25	43	32	25	41	30	24	17
0.80	54	41	32	52	40	32	49	38	31	22
1.00	61	48	40	59	47	39	55	47	37	28
1.25	68	55	47	66	54	46	60	50	43	33
1.50	74	61	52	70	59	51	65	55	48	36
2.00	81	70	61	77	67	59	71	62	56	42
2.50	86	75	67	82	72	65	74	67	60	46
3.00	89	80	72	85	77	70	77	70	65	49
4.00	94	86	79	90	82	76	81	75	70	54
5.00	97	90	84	93	86	81	84	79	74	56
ROOM INDEX	UF (total)									Direct
According to DIN EN 13032-2 2004			Suspended					SHRNOM = 1.25		

C Range: 0 - 360DEG
 C Interval: 30.0DEG
 Test Speed: HIGH
 Temperature: 25.3°C
 Operators:
 Test Date: 2025-03-17

γ Range: 0 - 180DEG
 γ Interval: 1.0DEG
 Test System: EVERFINE GO-2000B_V1 SYSTEM V2.00.488
 Humidity: 65.0%
 Test Distance: 6.360m [K=1.0000]
 Remarks:

ISOCANDELA DIAGRAM

Test:U:24.00V I:0.1838A P:4.411W PF:1.000 Freq:0Hz Lamp Flux:190.659x1 lm		
NAME: SF18-24V-5050-72-RGB-G	TYPE:	WEIGHT:
SPEC.:	DIM.: Length=1m	SERIAL No.:
MFR.: OLympia lighting	SUR.:	Shielding Angle:

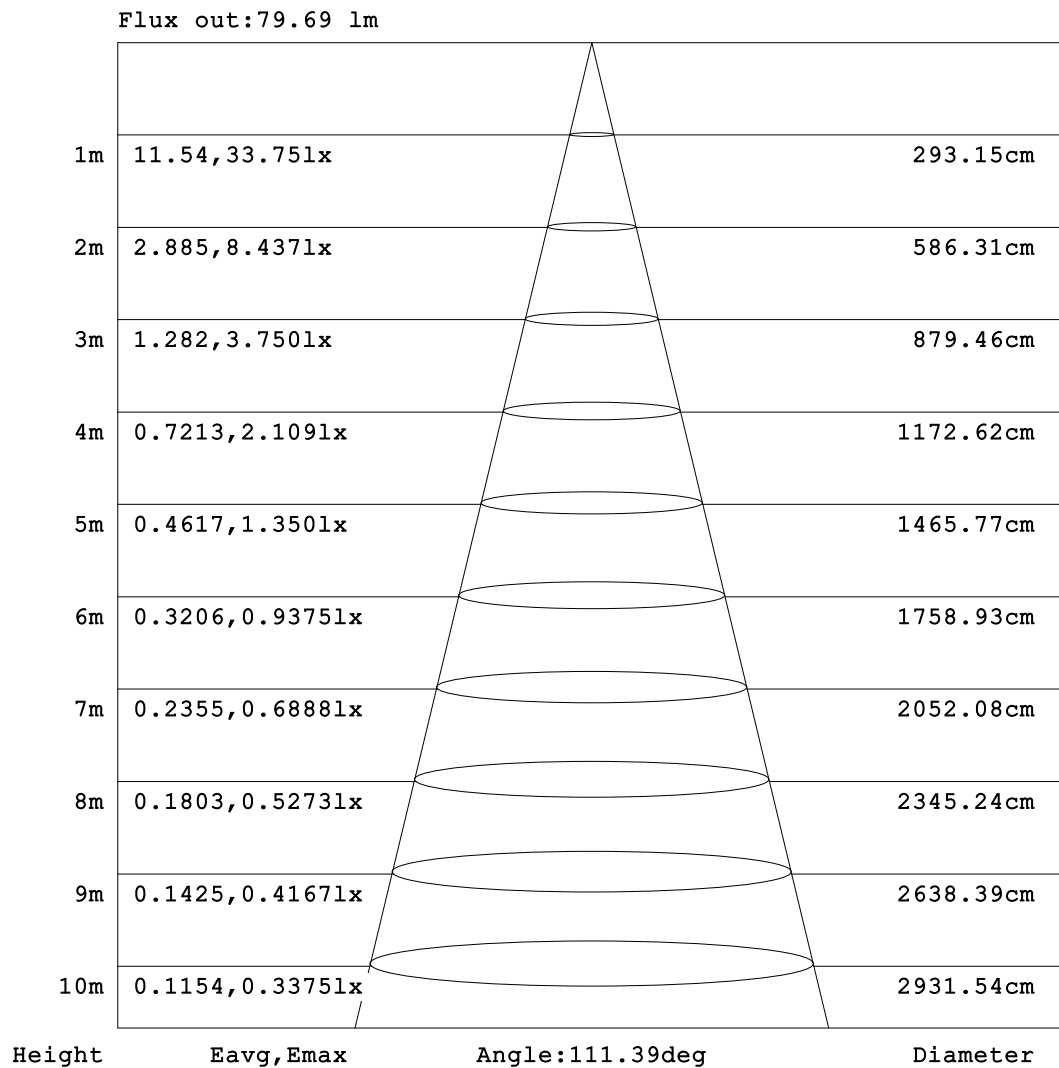


C Range: 0 - 360DEG
C Interval: 30.0DEG
Test Speed: HIGH
Temperature:25.3℃
Operators:
Test Date:2025-03-17

γ Range: 0 - 180DEG
γ Interval: 1.0DEG
Test System:EVERFINE GO-2000B_V1 SYSTEM V2.00.488
Humidity:65.0%
Test Distance:6.360m [K=1.0000]
Remarks:

AAI Figure

Test:U:24.00V I:0.1838A P:4.411W PF:1.000 Freq:0Hz Lamp Flux:190.659x1 lm		
NAME: SF18-24V-5050-72-RGB-G	TYPE:	WEIGHT:
SPEC.:	DIM.: Length=1m	SERIAL No.:
MFR.: OLympia lighting	SUR.:	Shielding Angle:



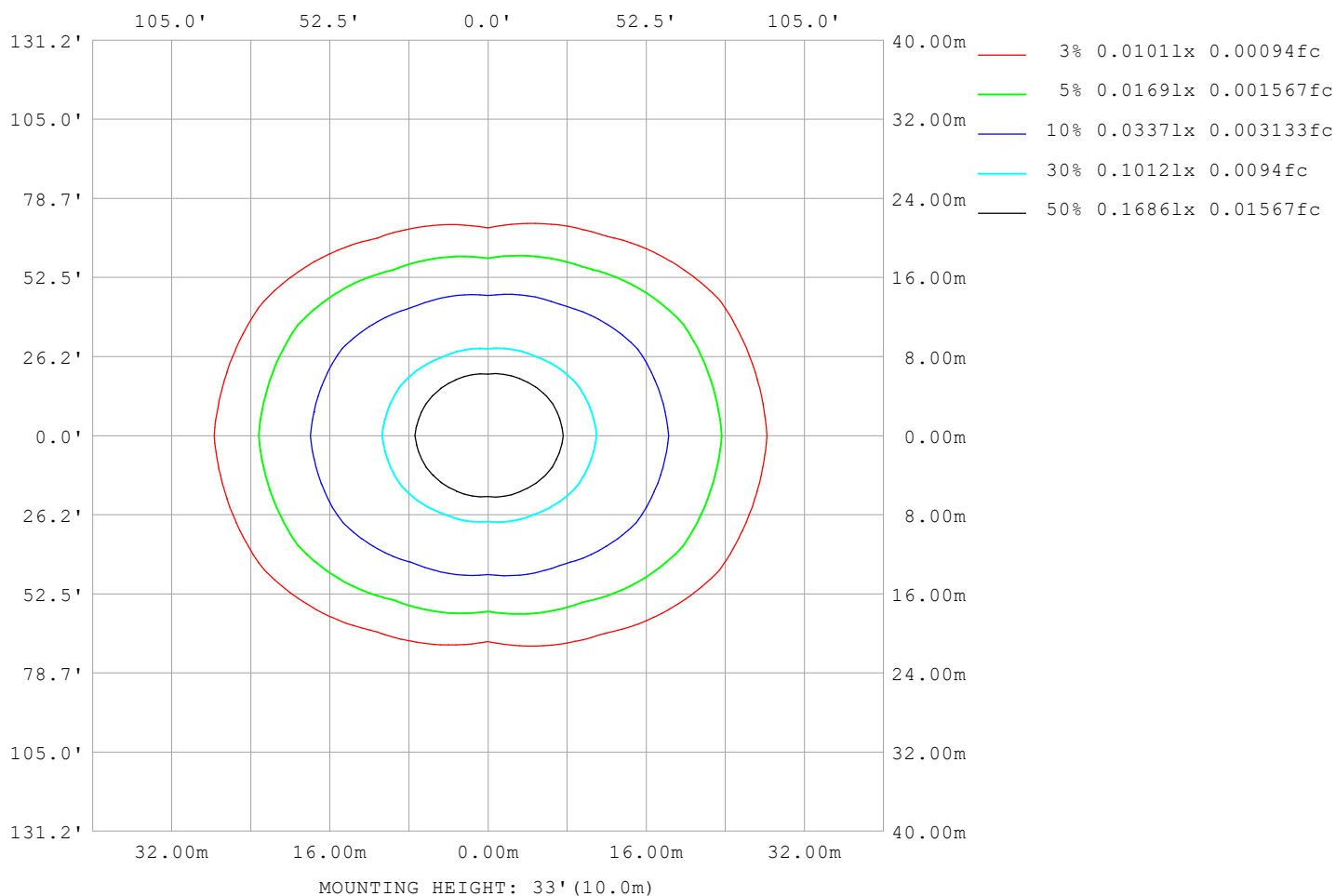
Note:The Curves indicate the illuminated area and the average illumination when the luminaire is at different distance.

C Range: 0 - 360DEG
C Interval: 30.0DEG
Test Speed: HIGH
Temperature:25.3℃
Operators:
Test Date:2025-03-17

γ Range: 0 - 180DEG
γ Interval: 1.0DEG
Test System:EVERFINE GO-2000B_V1 SYSTEM V2.00.488
Humidity:65.0%
Test Distance:6.360m [K=1.0000]
Remarks:

ISOLUX DIAGRAM

Test:U:24.00V I:0.1838A P:4.411W PF:1.000 Freq:0Hz Lamp Flux:190.659x1 lm		
NAME: SF18-24V-5050-72-RGB-G	TYPE:	WEIGHT:
SPEC.:	DIM.: Length=1m	SERIAL No.:
MFR.: OLympia lighting	SUR.:	Shielding Angle:



C Range: 0 - 360DEG
C Interval: 30.0DEG
Test Speed: HIGH
Temperature: 25.3°C
Operators:
Test Date: 2025-03-17

γ Range: 0 - 180DEG
γ Interval: 1.0DEG
Test System: EVERFINE GO-2000B_V1 SYSTEM V2.00.488
Humidity: 65.0%
Test Distance: 6.360m [K=1.0000]
Remarks:

LED Avg.L Report

Test:U:24.00V I:0.1838A P:4.411W PF:1.000 Freq:0Hz Lamp Flux:190.659x1 lm		
NAME: SF18-24V-5050-72-RGB-G	TYPE:	WEIGHT:
SPEC.:	DIM.: Length=1m	SERIAL No.:
MFR.: OLympia lighting	SUR.:	Shielding Angle:

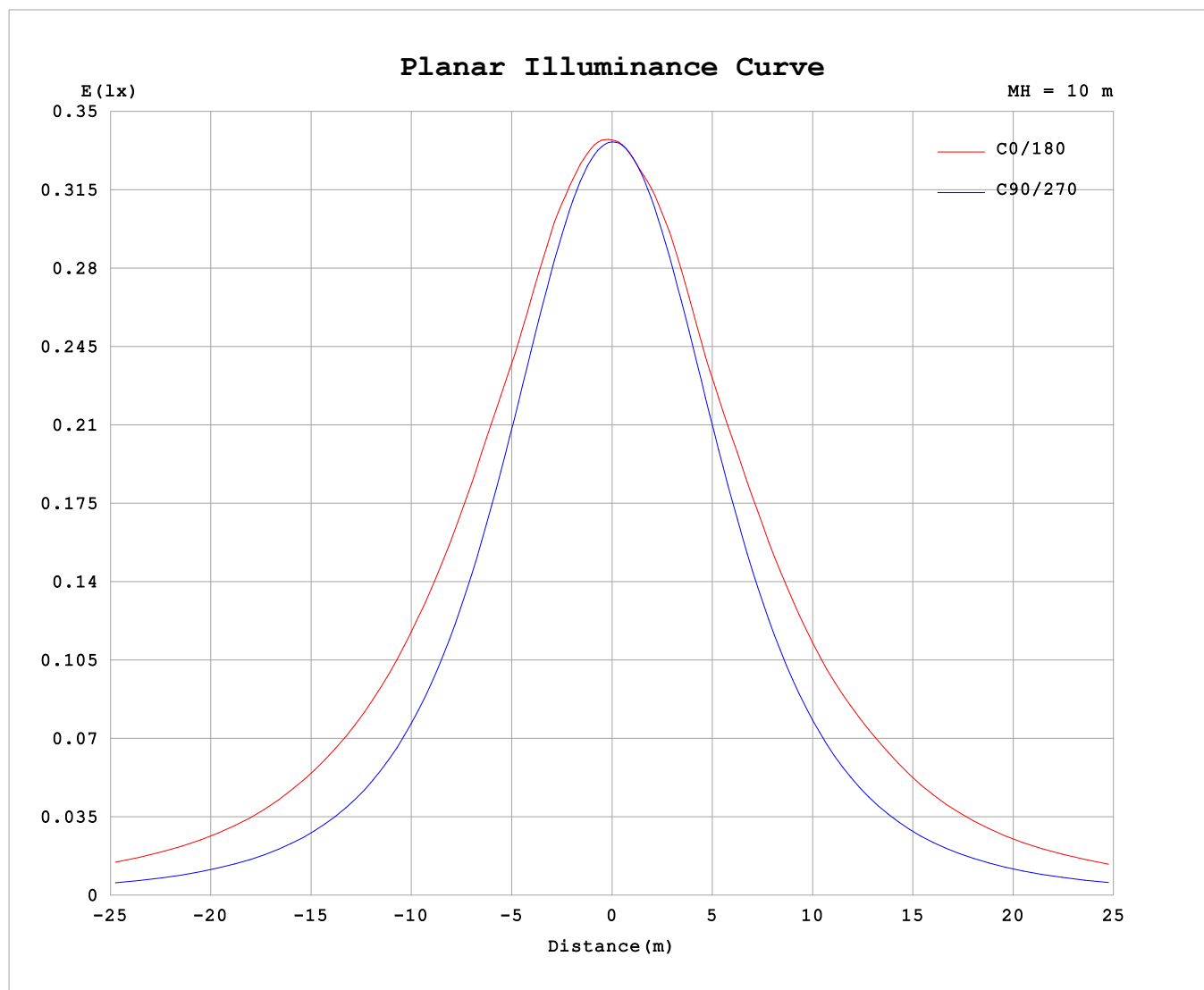
AvgL	cd/m2
L_0~180 (65) av	4072
L_0~180 (75) av	5715
L_0~180 (85) av	13908
L_90~270 (65) av	1771
L_90~270 (75) av	1751
L_90~270 (85) av	2000
L_45 (65) av	3028
L_45 (75) av	4073
L_45 (85) av	9089

Standard: GB/T 29293-2012

C Range: 0 - 360DEG
C Interval: 30.0DEG
Test Speed: HIGH
Temperature:25.3℃
Operators:
Test Date:2025-03-17

γ Range: 0 - 180DEG
γ Interval: 1.0DEG
Test System:EVERFINE GO-2000B_V1 SYSTEM V2.00.488
Humidity:65.0%
Test Distance:6.360m [K=1.0000]
Remarks:

Planar Illuminance Curve



C Range: 0 - 360DEG
C Interval: 30.0DEG
Test Speed: HIGH
Temperature: 25.3 °C
Operators:
Test Date: 2025-03-17

γ Range: 0 - 180DEG
 γ Interval: 1.0DEG
Test System: EVERFINE GO-2000B_V1 SYSTEM V2.00.488
Humidity: 65.0%
Test Distance: 6.360m [K=1.0000]
Remarks:

LUMINOUS DISTRIBUTION INTENSITY DATA

Test:U:24.00V I:0.1838A P:4.411W PF:1.000 Freq:0Hz Lamp Flux:190.659x1 lm																	
NAME: SF18-24V-5050-72-RGB-G									TYPE:						WEIGHT:		
SPEC.:									DIM.: Length=1m						SERIAL No.:		
MFR.: OLympia lighting									SUR.:						Shielding Angle:		

Table--1

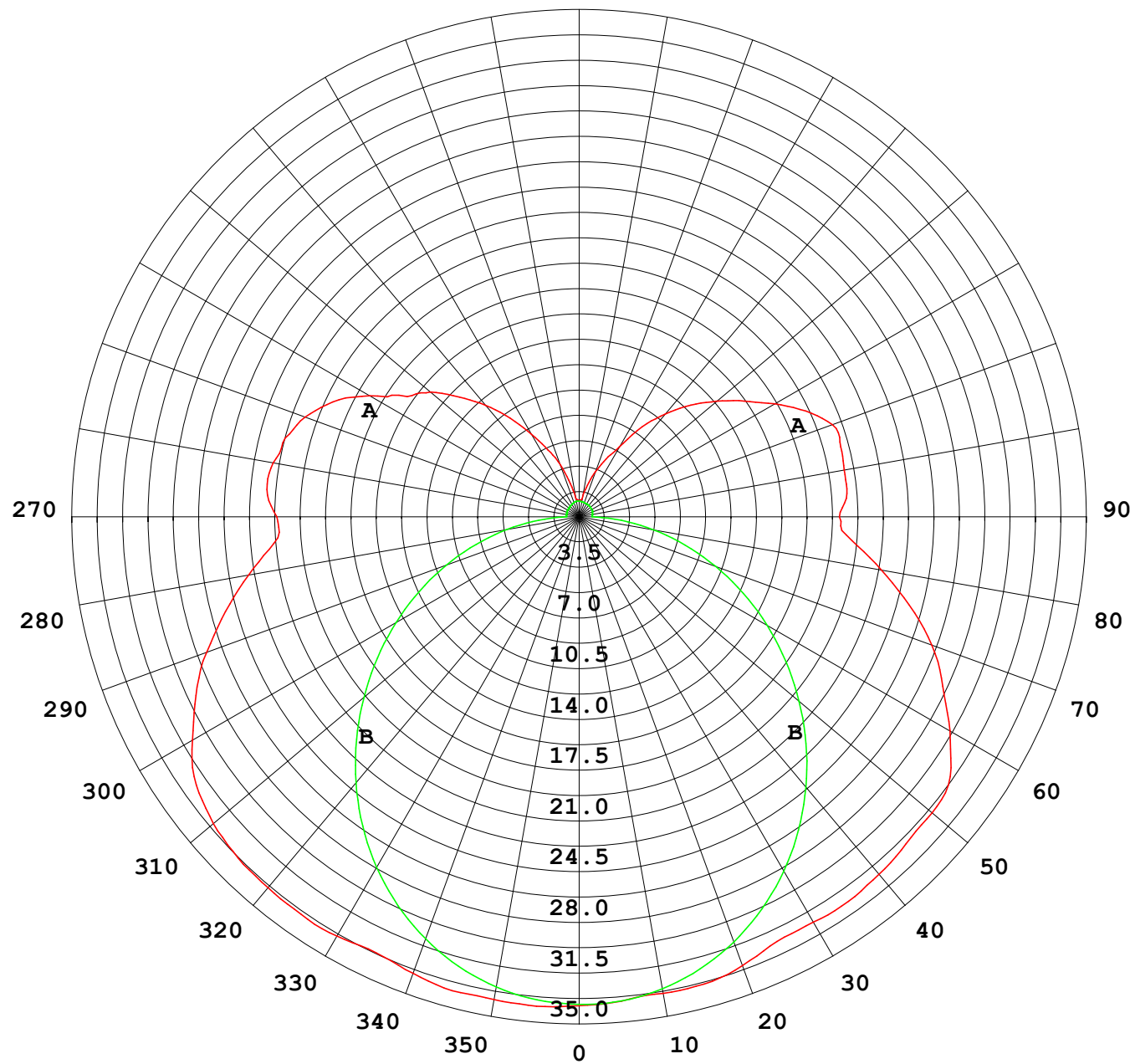
UNIT: cd

C (DEG) γ (DEG)	0	30	60	90	120	150	180	210	240	270	300	330						
0	33.7	33.7	33.7	33.7	33.7	33.7	33.7	33.7	33.7	33.7	33.7	33.7						
5	33.9	33.8	33.7	33.5	33.5	33.5	33.5	33.5	33.5	33.6	33.7	33.8						
10	33.8	33.6	33.4	33.0	33.0	33.1	33.4	33.2	33.1	33.1	33.4	33.7						
15	33.8	33.4	32.7	32.2	32.2	33.0	33.3	33.1	32.4	32.3	32.8	33.5						
20	33.5	33.0	31.8	31.0	31.5	32.6	32.9	32.7	31.7	31.3	32.0	33.2						
25	33.1	32.4	30.9	29.6	30.6	31.7	32.3	31.8	30.9	29.9	31.1	32.6						
30	33.4	31.7	29.6	28.0	29.3	31.0	32.3	31.1	29.7	28.3	30.0	32.0						
35	33.4	31.5	28.1	26.1	27.7	30.6	32.4	30.7	28.1	26.4	28.5	31.8						
40	33.4	30.9	26.5	24.0	25.9	30.0	32.2	30.2	26.3	24.4	26.9	31.2						
45	33.3	30.2	24.6	21.8	24.0	29.3	31.9	29.4	24.4	22.2	25.1	30.5						
50	32.9	29.5	22.6	19.4	22.0	28.4	31.8	28.5	22.5	19.8	23.1	29.8						
55	32.2	28.5	20.4	17.0	19.9	27.4	31.2	27.5	20.4	17.4	20.9	28.8						
60	30.8	27.3	18.5	14.6	18.0	26.4	29.5	26.6	18.4	15.0	19.0	27.6						
65	29.1	25.9	16.8	12.2	16.1	24.6	27.6	24.8	16.4	12.5	17.3	26.2						
70	27.3	24.3	15.1	9.76	14.4	22.7	25.9	22.8	14.7	10.0	15.5	24.5						
75	25.2	21.9	13.3	7.37	12.7	20.6	23.6	20.7	12.9	7.59	13.7	22.1						
80	23.1	19.7	11.3	5.05	10.8	18.2	21.2	18.2	11.0	5.23	11.7	19.9						
85	21.1	17.6	9.25	2.82	8.71	15.7	18.9	15.7	8.85	2.94	9.55	17.7						
90	20.8	16.7	7.72	0.89	7.11	14.4	17.9	14.2	7.04	0.92	7.85	16.7						
95	21.6	17.3	7.78	0.90	6.88	14.8	18.5	14.6	6.81	0.91	7.94	17.3						
100	21.4	17.9	6.52	0.90	6.66	15.7	18.6	15.6	6.60	0.94	6.78	17.8						
105	21.0	16.9	5.96	0.90	6.52	16.0	18.7	15.9	6.49	0.97	6.25	17.4						
110	20.1	15.7	5.31	0.91	6.52	15.1	18.6	15.0	6.51	0.99	6.20	15.9						
115	18.7	13.8	5.92	0.92	6.44	13.8	17.2	13.7	6.43	1.01	5.99	14.5						
120	16.7	12.1	5.40	0.93	5.96	12.4	15.6	12.4	5.97	1.02	5.56	12.7						
125	14.5	11.7	4.58	0.93	5.35	11.3	13.9	11.3	5.38	1.03	4.66	12.0						
130	13.4	10.6	4.08	0.94	4.63	10.1	12.4	10.1	4.65	1.03	4.26	10.7						
135	11.7	8.48	3.38	0.96	3.98	8.86	10.9	8.84	4.00	1.04	3.52	8.64						
140	10.0	6.72	2.75	0.97	3.38	7.48	9.27	7.46	3.40	1.04	2.90	6.70						
145	8.29	5.01	2.32	0.99	2.82	6.00	7.58	5.99	2.76	1.04	2.41	5.15						
150	6.57	3.95	1.87	1.01	2.26	4.79	5.56	4.55	2.28	1.04	1.88	3.90						
155	5.09	3.03	1.55	1.03	1.88	3.78	4.39	3.62	1.92	1.04	1.55	3.01						
160	3.81	2.15	1.36	1.06	1.63	2.80	3.32	2.77	1.63	1.05	1.36	2.12						
165	2.37	1.49	1.25	1.08	1.41	2.03	2.27	2.03	1.38	1.06	1.22	1.53						
170	1.28	1.26	1.20	1.09	1.32	1.51	1.27	1.52	1.28	1.07	1.18	1.29						
175	1.16	1.18	1.17	1.11	1.28	1.32	1.17	1.32	1.24	1.08	1.14	1.21						
180	1.11	1.14	1.12	1.11	1.13	1.14	1.12	1.16	1.13	1.10	1.12	1.15						

C Range: 0 - 360DEG
C Interval: 30.0DEG
Test Speed: HIGH
Temperature:25.3℃
Operators:
Test Date:2025-03-17

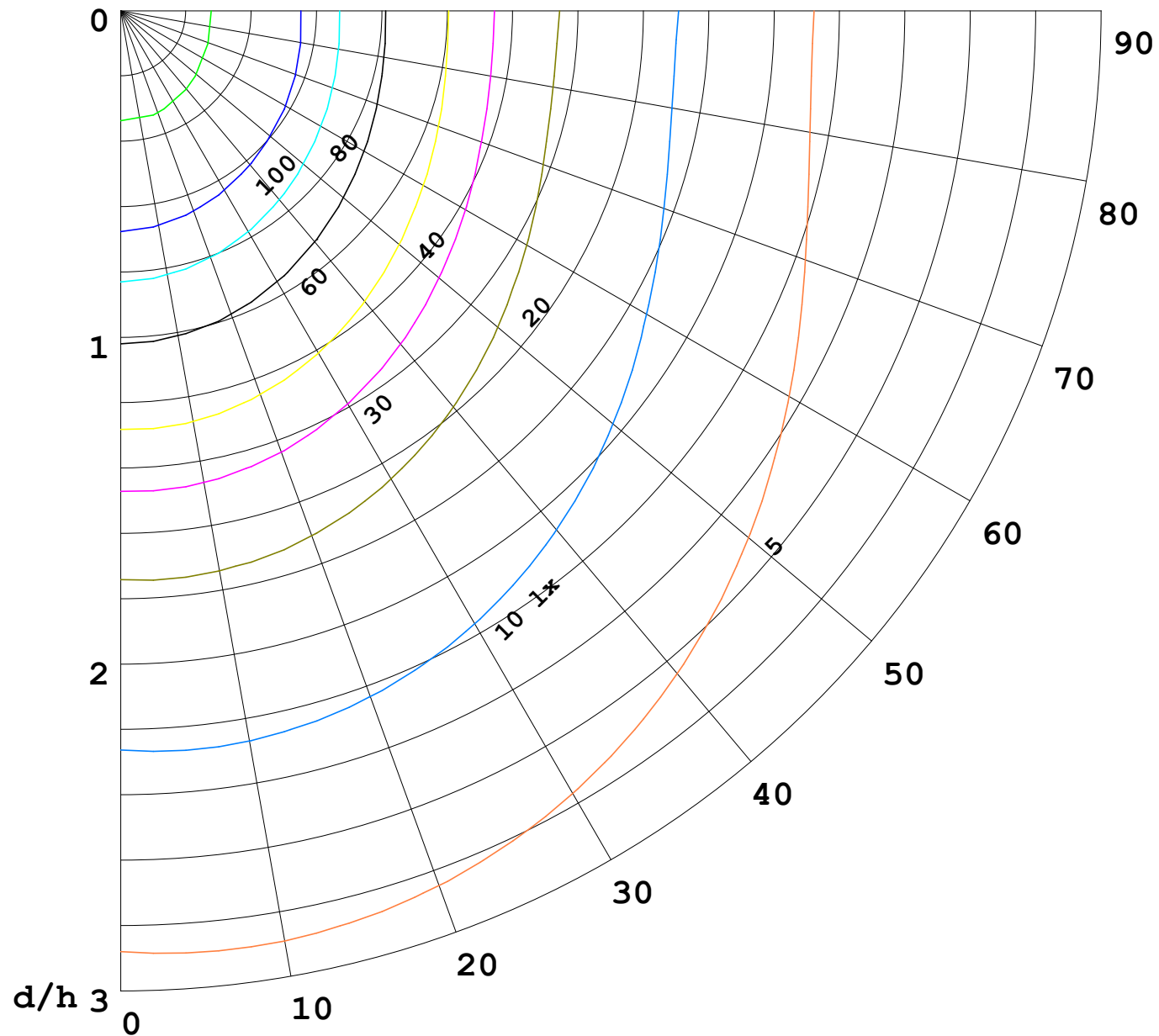
γ Range: 0 - 180DEG
γ Interval: 1.0DEG
Test System:EVERFINE GO-2000B_V1 SYSTEM V2.00.488
Humidity:65.0%
Test Distance:6.360m [K=1.0000]
Remarks:

I (cd)



1000 lm

$\kappa = 1$



F = 1000 lm
 K = 0.7
 Hcc = 0.8 m
 Hfc = 0.0 m
 Eave = 100 lx

	Pcc	Pw	Pfc
—————	70	50	30
—————	50	30	20

