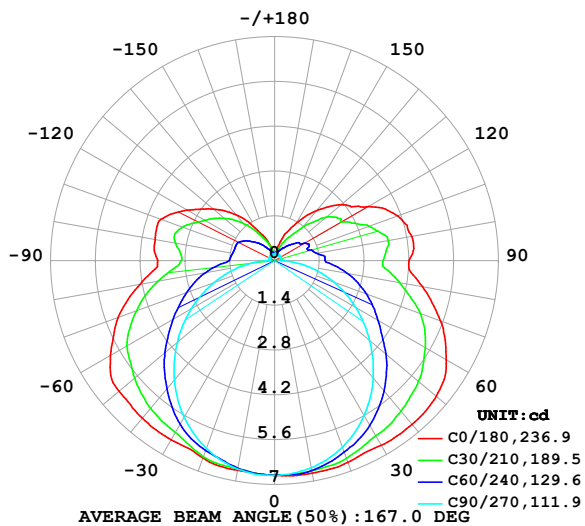


LUMINAIRE PHOTOMETRIC TEST REPORT

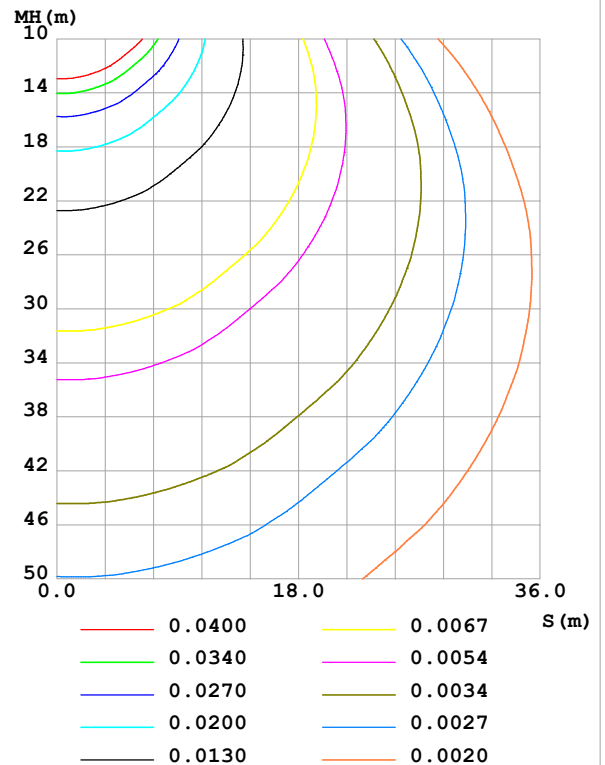
Test:U:24.00V I:0.1739A P:4.174W PF:1.000 Freq:0Hz Lamp Flux:38.3887x1 lm		
NAME: SF18-24V-5050-72-RGB-B	TYPE:	WEIGHT:
SPEC.:	DIM.: Length=1m	SERIAL No.:
MFR.: Olym pia lighting	SUR.:	Shielding Angle:

DATA OF LAMP		PHOTOMETRIC DATA				Eff: 9.20 lm/W
MODEL	5050	Imax (cd)	6.751	S/MH(C0/180)	1.49	
NOMINAL POWER(W)		LOR(%)	100.0	S/MH(C90/270)	1.25	
RATED VOLTAGE(V)	24	TOTAL FLUX(lm)	38.389	η UP,DN(C0-180)	13.5,36.8	
NOMINAL FLUX(lm)	38.3887	CIE CLASS	SEMI-D.	η UP,DN(C180-360)	13.1,36.6	
LAMPS INSIDE	1	η up (%)	26.6	CIBSE SHR NOM	1.50	
TEST VOLTAGE(V)		η down (%)	73.4	CIBSE SHR MAX	1.55	

LUMINOUS INTENSITY DISTRIBUTION DIAGRAM



C0 PLANE ISOLUX DIAGRAM (UNIT:lx)



C Range: 0 - 360DEG
C Interval: 30.0DEG
Test Speed: HIGH
Temperature:25.3℃
Operators:
Test Date:2025-03-17

γ Range: 0 - 180DEG
 γ Interval: 1.0DEG
Test System:EVERFINE GO-2000B_V1 SYSTEM V2.00.488
Humidity:65.0%
Test Distance:6.360m [K=1.0000]
Remarks:

ZONAL FLUX DIAGRAM

ZONAL FLUX DIAGRAM:

γ	C0	C45	C90	C135	C180	C225	C270	C315	γ	Φ zone	Φ total	%lum, lamp
10	6.748	6.674	6.574	6.601	6.658	6.599	6.621	6.703	0- 10	0.6377	0.6377	1.66,1.66
20	6.708	6.475	6.207	6.418	6.566	6.420	6.254	6.511	10- 20	1.857	2.494	6.5,6.5
30	6.667	6.138	5.600	6.041	6.468	6.058	5.659	6.191	20- 30	2.901	5.395	14.1,14.1
40	6.687	5.737	4.801	5.610	6.433	5.639	4.881	5.801	30- 40	3.709	9.104	23.7,23.7
50	6.604	5.210	3.870	5.055	6.349	5.097	3.968	5.285	40- 50	4.210	13.31	34.7,34.7
60	6.194	4.592	2.931	4.456	5.927	4.503	3.007	4.672	50- 60	4.358	17.67	46,46
70	5.515	3.961	1.974	3.740	5.204	3.763	2.016	4.021	60- 70	4.146	21.82	56.8,56.8
80	4.698	3.139	1.040	2.938	4.274	2.951	1.053	3.192	70- 80	3.581	25.40	66.2,66.2
90	4.203	2.487	0.1966	2.201	3.657	2.170	0.2028	2.501	80- 90	2.774	28.17	73.4,73.4
100	4.359	2.477	0.1966	2.294	3.796	2.240	0.1908	2.487	90-100	2.490	30.66	79.9,79.9
110	4.094	2.117	0.2024	2.202	3.784	2.186	0.1908	2.249	100-110	2.373	33.04	86.1,86.1
120	3.384	1.761	0.2081	1.877	3.162	1.869	0.1966	1.843	110-120	1.978	35.01	91.2,91.2
130	2.725	1.491	0.2053	1.506	2.509	1.500	0.2052	1.522	120-130	1.476	36.49	95.1,95.1
140	2.049	0.9715	0.2169	1.106	1.871	1.105	0.2053	0.9750	130-140	0.9821	37.47	97.6,97.6
150	1.344	0.6069	0.2226	0.7139	1.114	0.6922	0.2053	0.5858	140-150	0.5435	38.01	99,99
160	0.7951	0.3647	0.2226	0.4499	0.6496	0.4456	0.2053	0.3535	150-160	0.2547	38.27	99.7,99.7
170	0.2659	0.2509	0.2255	0.2855	0.2483	0.2827	0.2053	0.2467	160-170	0.0958	38.37	99.9,99.9
180	0.2282	0.2293	0.2284	0.2322	0.2282	0.2350	0.2168	0.2265	170-180	0.0234	38.39	100,100
DEG	LUMINOUS INTENSITY:cd									UNIT:lm		

Conical surface Flux(90deg): 11.168 lm

%lum = 29.1%

%lamp = 29.1%

Conical surface Flux(130deg): 19.794 lm

%lum = 51.6%

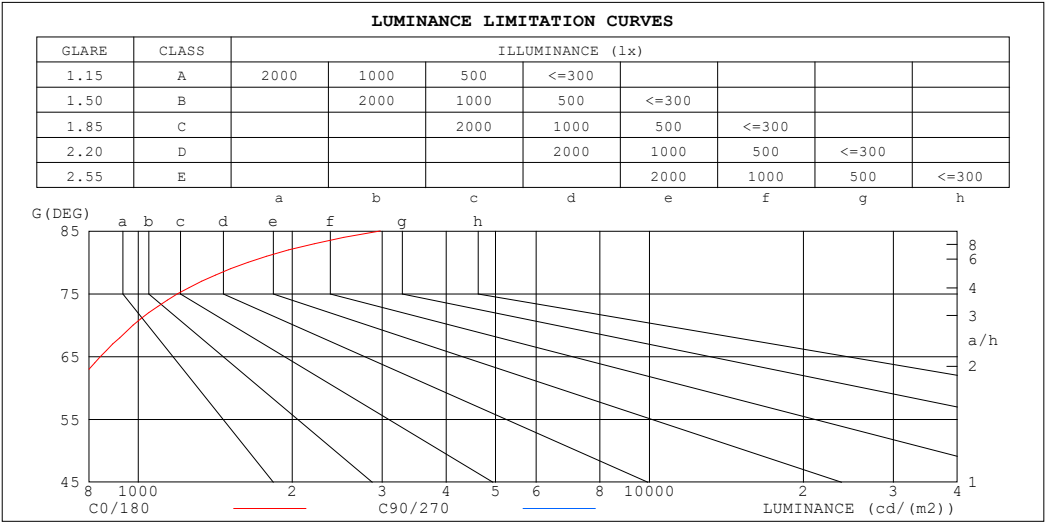
%lamp = 51.6%

C Range: 0 - 360DEG
 C Interval: 30.0DEG
 Test Speed: HIGH
 Temperature:25.3℃
 Operators:
 Test Date:2025-03-17

γ Range: 0 - 180DEG
 γ Interval: 1.0DEG
 Test System:EVERFINE GO-2000B_V1 SYSTEM V2.00.488
 Humidity:65.0%
 Test Distance:6.360m [K=1.0000]
 Remarks:

LUMINANCE LIMITATION CURVES

Test:U:24.00V I:0.1739A P:4.174W PF:1.000 Freq:0Hz Lamp Flux:38.3887x1 lm		
NAME: SF18-24V-5050-72-RGB-B	TYPE:	WEIGHT:
SPEC.:	DIM.: Length=1m	SERIAL No.:
MFR.: OLympia lighting	SUR.:	Shielding Angle:



LUMINANCE cd/(m2)		
G (DEG)	C0/180	C90/270
85	2975	407
80	1638	362
75	1194	352
70	976	349
65	843	350
60	750	355
55	683	359
50	622	364
45	571	372

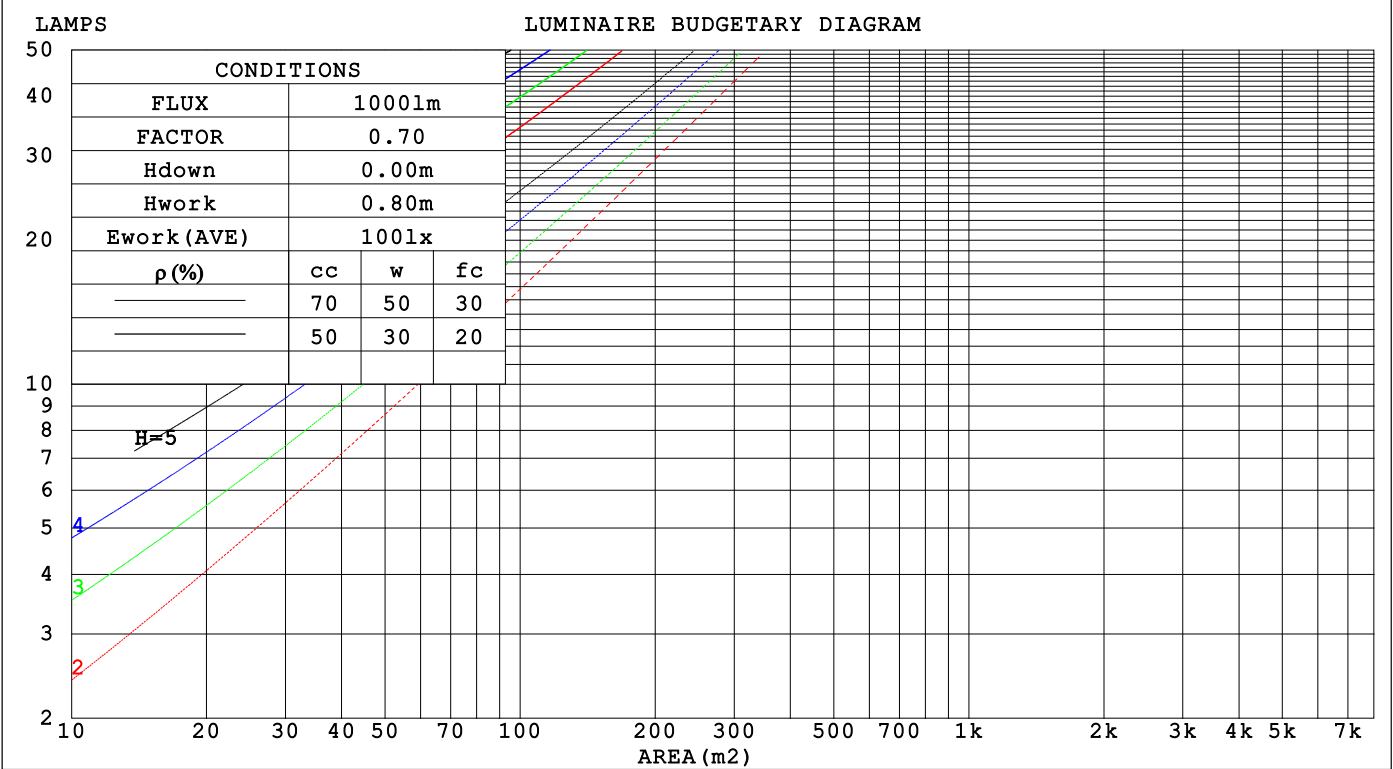
C Range: 0 - 360DEG
C Interval: 30.0DEG
Test Speed: HIGH
Temperature:25.3℃
Operators:
Test Date:2025-03-17

γ Range: 0 - 180DEG
γ Interval: 1.0DEG
Test System:EVERFINE GO-2000B_V1 SYSTEM V2.00.488
Humidity:65.0%
Test Distance:6.360m [K=1.0000]
Remarks:

CU AND LUMINAIRE BUDGETARY ESTIMATE DIAGRAM

Test:U:24.00V I:0.1739A P:4.174W PF:1.000 Freq:0Hz																	
Lamp Flux:38.3887x1 lm																	
NAME: SF18-24V-5050-72-RGB-B									TYPE:						WEIGHT:		
SPEC.:									DIM.: Length=1m						SERIAL No.:		
MFR.: OLYMPIA lighting									SUR.:						Shielding Angle:		

pcc	80%			70%			50%			30%			10%			0
pw	50%	30%	10%	50%	30%	10%	50%	30%	10%	50%	30%	10%	50%	30%	10%	0
pfc	20%			20%			20%			20%			20%			0
RCR	RCR:Room Cavity Ratio Coefficients of Utilization(CU)															
0.0	1.13	1.13	1.13	1.07	1.07	1.07	.96	.96	.96	.87	.87	.87	.78	.78	.78	.73
1.0	.94	.88	.83	.89	.84	.80	.79	.76	.72	.71	.68	.65	.63	.61	.59	.55
2.0	.80	.72	.65	.76	.69	.63	.68	.62	.57	.60	.56	.52	.54	.50	.47	.43
3.0	.69	.60	.53	.65	.57	.51	.59	.52	.46	.52	.47	.42	.46	.42	.38	.35
4.0	.60	.51	.44	.57	.49	.42	.51	.44	.39	.46	.40	.35	.41	.36	.32	.29
5.0	.54	.44	.37	.51	.42	.36	.46	.38	.33	.41	.35	.30	.36	.31	.27	.24
6.0	.48	.39	.32	.45	.37	.31	.41	.34	.28	.37	.31	.26	.33	.28	.24	.21
7.0	.43	.34	.28	.41	.33	.27	.37	.30	.25	.33	.27	.23	.30	.25	.21	.18
8.0	.39	.30	.24	.37	.29	.24	.34	.27	.22	.30	.24	.20	.27	.22	.18	.16
9.0	.36	.27	.22	.34	.26	.21	.31	.24	.19	.28	.22	.18	.25	.20	.16	.14
10.0	.33	.25	.19	.31	.24	.19	.28	.22	.17	.26	.20	.16	.23	.18	.15	.13



C Range: 0 - 360DEG

C Interval: 30.0DEG

Test Speed: HIGH

Temperature:25.3℃

Operators:

Test Date:2025-03-17

γ Range: 0 - 180DEG

γ Interval: 1.0DEG

Test System:EVERFINE GO-2000B_V1 SYSTEM V2.00.488

Humidity:65.0%

Test Distance:6.360m [K=1.0000]

Remarks:

WEC AND CCEC

Test:U:24.00V I:0.1739A P:4.174W PF:1.000 Freq:0Hz Lamp Flux:38.3887x1 lm		
NAME: SF18-24V-5050-72-RGB-B	TYPE:	WEIGHT:
SPEC.:	DIM.: Length=1m	SERIAL No.:
MFR.: OLympia lighting	SUR.:	Shielding Angle:

pcc	80%			70%			50%			30%			10%			0														
pw	50%	30%	10%	50%	30%	10%	50%	30%	10%	50%	30%	10%	50%	30%	10%	0														
pfc	20%			20%			20%			20%			20%			0														
RCR	RCR:Room Cavity Ratio															Wall Exitance Coefficients(WEC)														
0.0																														
1.0	.384	.218	.069	.369	.210	.067	.340	.195	.062	.314	.181	.058	.289	.168	.054															
2.0	.332	.182	.056	.318	.175	.054	.292	.162	.050	.268	.150	.047	.246	.139	.044															
3.0	.295	.157	.047	.282	.151	.045	.258	.140	.043	.236	.130	.040	.216	.120	.037															
4.0	.265	.138	.040	.254	.133	.039	.232	.123	.037	.212	.114	.034	.193	.105	.032															
5.0	.241	.123	.036	.230	.118	.034	.211	.110	.032	.192	.101	.030	.175	.094	.028															
6.0	.220	.111	.032	.211	.107	.031	.193	.099	.029	.176	.091	.027	.160	.084	.025															
7.0	.203	.100	.028	.194	.097	.028	.178	.090	.026	.162	.083	.024	.148	.077	.023															
8.0	.188	.092	.026	.180	.089	.025	.165	.082	.024	.151	.076	.022	.137	.070	.021															
9.0	.175	.085	.024	.168	.082	.023	.154	.076	.022	.141	.070	.020	.128	.065	.019															
10.0	.164	.079	.022	.157	.076	.021	.144	.071	.020	.132	.065	.019	.120	.060	.017															

pcc	80%			70%			50%			30%			10%			0
pw	50%	30%	10%	50%	30%	10%	50%	30%	10%	50%	30%	10%	50%	30%	10%	0
pfc	20%			20%			20%			20%			20%			0
RCR	RCR:Room Cavity Ratio						Ceiling Cavity Exitance Coefficients (CCEC)									
0.0	.393	.393	.393	.336	.336	.336	.229	.229	.229	.132	.132	.132	.042	.042	.042	
1.0	.390	.360	.333	.334	.309	.287	.228	.213	.198	.131	.123	.115	.042	.040	.037	
2.0	.383	.338	.299	.328	.291	.258	.225	.201	.180	.130	.117	.106	.042	.038	.034	
3.0	.376	.321	.278	.322	.277	.241	.221	.193	.169	.128	.112	.100	.041	.037	.033	
4.0	.369	.309	.264	.316	.267	.229	.217	.186	.161	.126	.109	.095	.040	.036	.031	
5.0	.361	.300	.254	.310	.259	.221	.214	.181	.156	.124	.106	.093	.040	.035	.031	
6.0	.354	.292	.247	.304	.253	.215	.210	.177	.152	.122	.104	.091	.039	.034	.030	
7.0	.347	.285	.242	.298	.247	.211	.206	.173	.150	.120	.102	.089	.039	.033	.029	
8.0	.340	.280	.238	.293	.243	.208	.203	.170	.147	.118	.101	.088	.038	.033	.029	
9.0	.334	.275	.235	.288	.239	.205	.199	.168	.146	.116	.099	.087	.038	.033	.029	
10.0	.328	.271	.233	.283	.235	.203	.196	.166	.145	.114	.098	.086	.037	.032	.029	

C Range: 0 - 360DEG
C Interval: 30.0DEG
Test Speed: HIGH
Temperature:25.3℃
Operators:
Test Date:2025-03-17

γ Range: 0 - 180DEG
γ Interval: 1.0DEG
Test System:EVERFINE GO-2000B_V1 SYSTEM V2.00.488
Humidity:65.0%
Test Distance:6.360m [K=1.0000]
Remarks:

UGR(Unified Glare Rating) Table

Test:U:24.00V I:0.1739A P:4.174W PF:1.000 Freq:0Hz Lamp Flux:38.3887x1 lm											
NAME: SF18-24V-5050-72-RGB-B					TYPE:			WEIGHT:			
SPEC.:					DIM.: Length=1m			SERIAL No.:			
MFR.: OLympia lighting					SUR.:			Shielding Angle:			
ceiling/cavity	0.7	0.7	0.5	0.5	0.3	0.7	0.7	0.5	0.5	0.3	
walls	0.5	0.3	0.5	0.3	0.3	0.5	0.3	0.5	0.3	0.3	
working plane	0.2	0.2	0.2	0.2	0.2	0.2	0.2	0.2	0.2	0.2	
Room dimensions		Viewed crosswise					Viewed endwise				
x = 2H y = 2H	20.9	22.1	21.5	22.8	23.5	17.7	19.0	18.3	19.6	20.3	
	3H	23.7	24.9	24.3	25.5	26.3	19.4	20.6	20.1	21.3	22.0
	4H	25.2	26.3	25.9	27.0	27.8	20.2	21.3	20.9	22.0	22.8
	6H	26.9	27.9	27.6	28.6	29.4	20.9	21.9	21.6	22.6	23.4
	8H	27.8	28.8	28.5	29.5	30.3	21.1	22.2	21.8	22.9	23.7
	12H	28.8	29.8	29.5	30.5	31.3	21.4	22.3	22.1	23.0	23.9
4H	2H	21.3	22.5	22.0	23.1	23.9	19.1	20.2	19.8	20.9	21.7
	3H	24.5	25.4	25.2	26.1	27.0	21.0	22.0	21.7	22.7	23.6
	4H	26.2	27.1	26.9	27.8	28.7	22.0	22.9	22.7	23.6	24.5
	6H	28.0	28.8	28.8	29.6	30.5	22.8	23.6	23.6	24.4	25.3
	8H	29.1	29.8	29.8	30.6	31.5	23.2	23.9	23.9	24.7	25.6
	12H	30.2	30.9	31.0	31.7	32.6	23.5	24.2	24.2	24.9	25.9
8H	4H	26.5	27.2	27.2	28.0	28.9	23.2	23.9	23.9	24.7	25.6
	6H	28.6	29.3	29.4	30.0	31.0	24.4	25.0	25.2	25.8	26.7
	8H	29.9	30.4	30.7	31.2	32.2	24.9	25.5	25.7	26.3	27.3
	12H	31.3	31.8	32.1	32.6	33.6	25.4	25.9	26.2	26.7	27.7
12H	4H	26.5	27.2	27.2	27.9	28.9	23.6	24.3	24.4	25.1	26.0
	6H	28.7	29.3	29.5	30.1	31.1	25.0	25.5	25.8	26.4	27.3
	8H	30.1	30.6	30.9	31.4	32.4	25.7	26.2	26.5	27.0	28.0
Variations with the observer position at spacings(CIE Pub.117):											
S = 1.0H	+ 0.1 / - 0.1					+ 0.1 / - 0.1					
1.5H	+ 0.2 / - 0.2					+ 0.2 / - 0.3					
2.0H	+ 0.2 / - 0.3					+ 0.2 / - 0.4					

CIE Pub.117, 38.39 lm Total Lamp Luminous Flux Correct (8log(F/F0) = -11.3)
Area: 0.0165 m2

C Range: 0 - 360DEG
C Interval: 30.0DEG
Test Speed: HIGH
Temperature:25.3℃
Operators:
Test Date:2025-03-17

γ Range: 0 - 180DEG
γ Interval: 1.0DEG
Test System:EVERFINE GO-2000B_V1 SYSTEM V2.00.488
Humidity:65.0%
Test Distance:6.360m [K=1.0000]
Remarks:

UTILIZATION FACTORS TABLE

Test:U:24.00V I:0.1739A P:4.174W PF:1.000 Freq:0Hz Lamp Flux:38.3887x1 lm		
NAME: SF18-24V-5050-72-RGB-B	TYPE:	WEIGHT:
SPEC.:	DIM.: Length=1m	SERIAL No.:
MFR.: OLympia lighting	SUR.:	Shielding Angle:

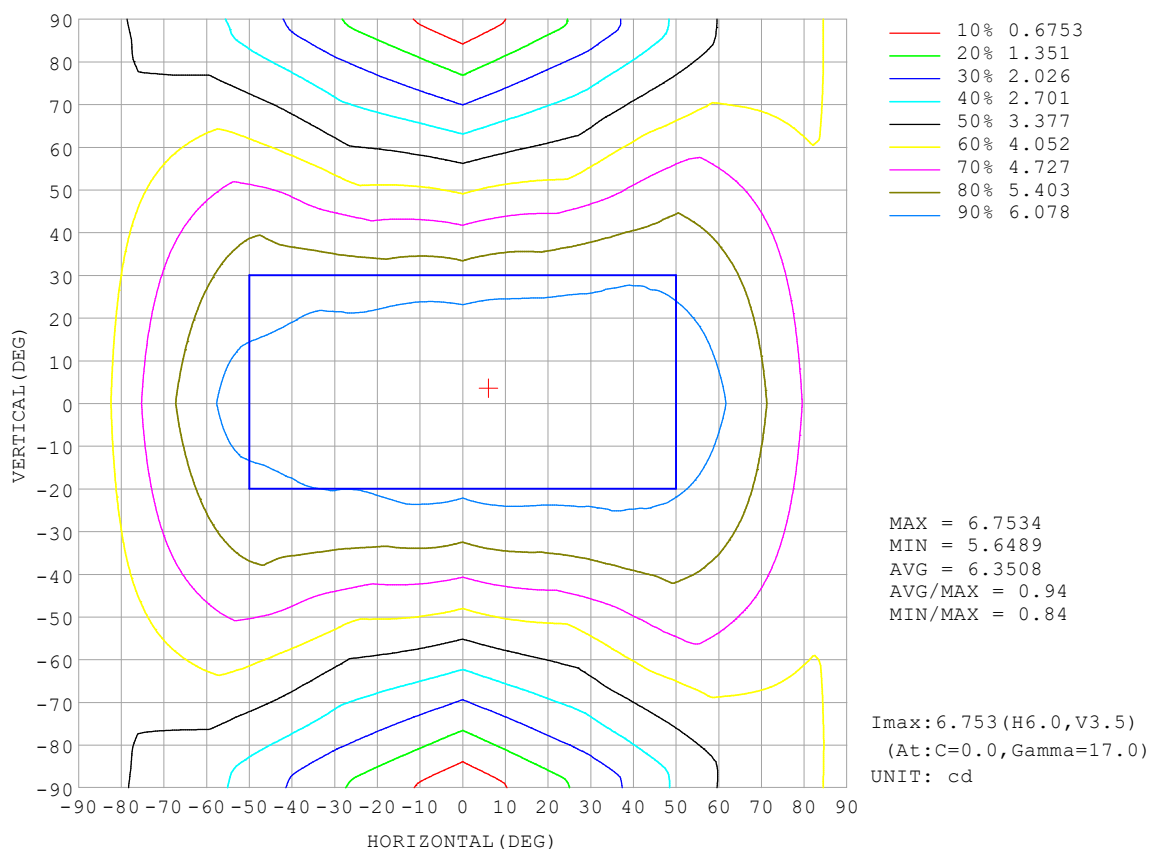
REFLECTANCE										
Ceiling	0.8	0.8	0.8	0.7	0.7	0.7	0.5	0.5	0.5	0
Walls	0.7	0.5	0.3	0.7	0.5	0.3	0.7	0.5	0.3	0
Working plane	0.2	0.2	0.2	0.2	0.2	0.2	0.2	0.2	0.2	0
ROOM INDEX	UTILIZATION FACTORS (PERCENT) $k(RI) \times RCR = 5$									
$k = 0.60$	45	32	25	43	31	25	41	30	24	17
0.80	54	40	32	52	39	32	48	38	31	22
1.00	61	48	39	59	47	39	55	46	37	28
1.25	68	55	46	65	54	45	60	50	43	32
1.50	73	61	52	70	59	51	64	55	48	36
2.00	81	69	61	77	67	59	70	62	55	42
2.50	86	75	67	82	72	64	74	66	60	46
3.00	89	80	72	85	76	69	77	70	64	49
4.00	94	86	79	90	82	76	81	75	70	53
5.00	97	90	84	92	86	81	83	78	74	56
ROOM INDEX	UF (total)									Direct
According to DIN EN 13032-2 2004			Suspended					SHRNOM = 1.25		

C Range: 0 - 360DEG
 C Interval: 30.0DEG
 Test Speed: HIGH
 Temperature: 25.3°C
 Operators:
 Test Date: 2025-03-17

γ Range: 0 - 180DEG
 γ Interval: 1.0DEG
 Test System: EVERFINE GO-2000B_V1 SYSTEM V2.00.488
 Humidity: 65.0%
 Test Distance: 6.360m [K=1.0000]
 Remarks:

ISOCANDELA DIAGRAM

Test:U:24.00V I:0.1739A P:4.174W PF:1.000 Freq:0Hz Lamp Flux:38.3887x1 lm		
NAME: SF18-24V-5050-72-RGB-B	TYPE:	WEIGHT:
SPEC.:	DIM.: Length=1m	SERIAL No.:
MFR.: OLympia lighting	SUR.:	Shielding Angle:

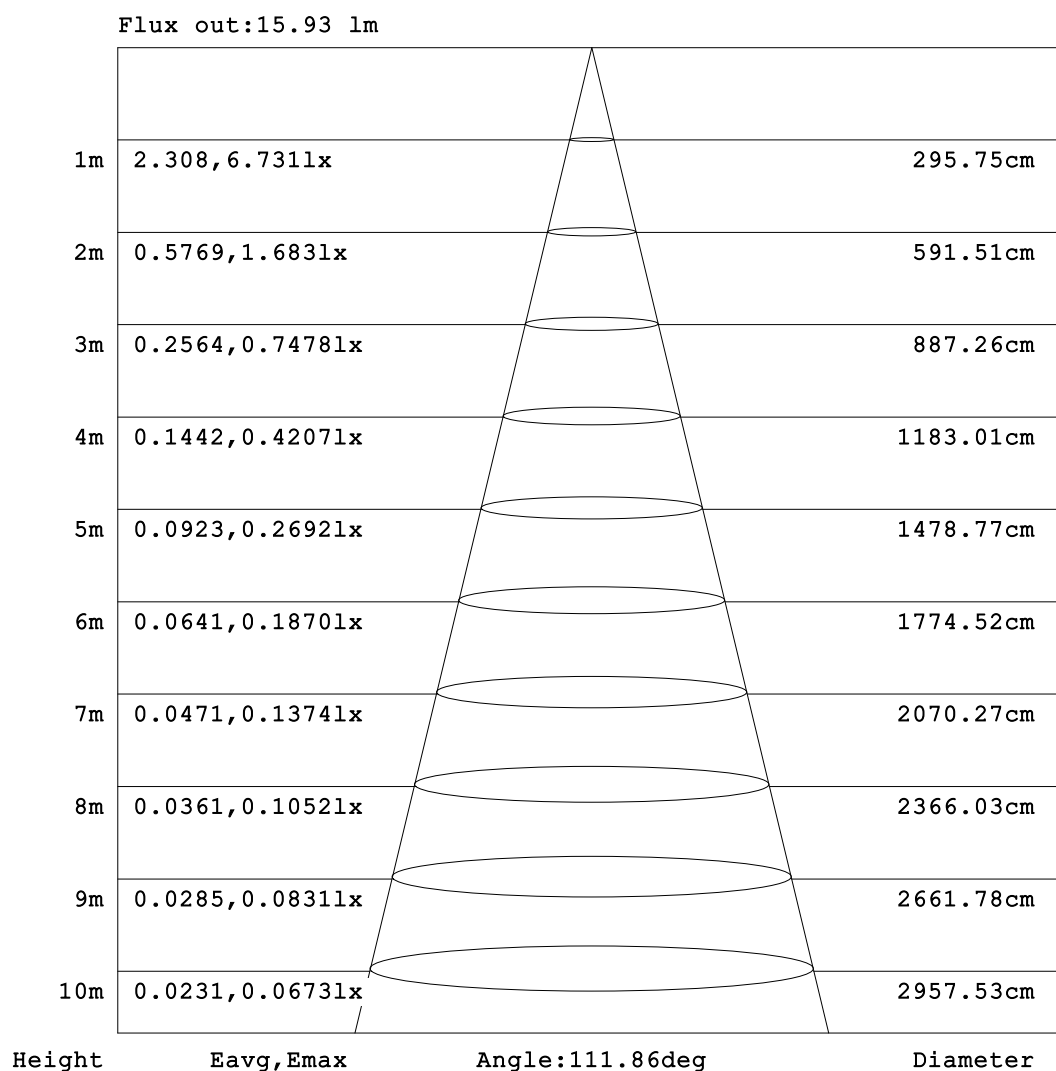


C Range: 0 - 360DEG
C Interval: 30.0DEG
Test Speed: HIGH
Temperature:25.3℃
Operators:
Test Date:2025-03-17

γ Range: 0 - 180DEG
γ Interval: 1.0DEG
Test System:EVERFINE GO-2000B_V1 SYSTEM V2.00.488
Humidity:65.0%
Test Distance:6.360m [K=1.0000]
Remarks:

AAI Figure

Test:U:24.00V I:0.1739A P:4.174W PF:1.000 Freq:0Hz Lamp Flux:38.3887x1 lm		
NAME: SF18-24V-5050-72-RGB-B	TYPE:	WEIGHT:
SPEC.:	DIM.: Length=1m	SERIAL No.:
MFR.: OLympia lighting	SUR.:	Shielding Angle:



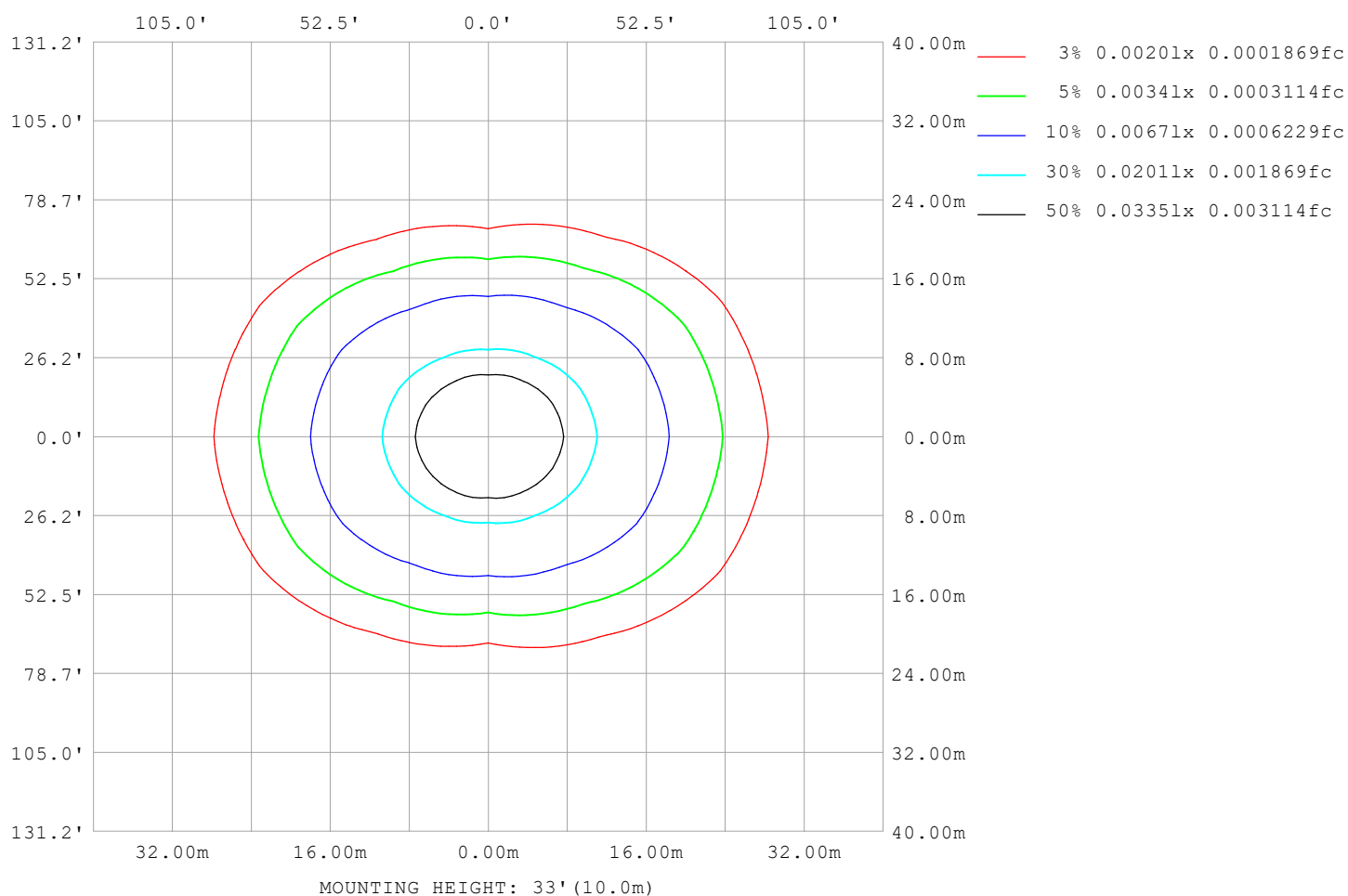
Note:The Curves indicate the illuminated area and the average illumination when the luminaire is at different distance.

C Range: 0 - 360DEG
C Interval: 30.0DEG
Test Speed: HIGH
Temperature:25.3℃
Operators:
Test Date:2025-03-17

γ Range: 0 - 180DEG
γ Interval: 1.0DEG
Test System:EVERFINE GO-2000B_V1 SYSTEM V2.00.488
Humidity:65.0%
Test Distance:6.360m [K=1.0000]
Remarks:

ISOLUX DIAGRAM

Test:U:24.00V I:0.1739A P:4.174W PF:1.000 Freq:0Hz Lamp Flux:38.3887x1 lm		
NAME: SF18-24V-5050-72-RGB-B	TYPE:	WEIGHT:
SPEC.:	DIM.: Length=1m	SERIAL No.:
MFR.: OLympia lighting	SUR.:	Shielding Angle:



C Range: 0 - 360DEG
C Interval: 30.0DEG
Test Speed: HIGH
Temperature: 25.3°C
Operators:
Test Date: 2025-03-17

γ Range: 0 - 180DEG
γ Interval: 1.0DEG
Test System: EVERFINE GO-2000B_V1 SYSTEM V2.00.488
Humidity: 65.0%
Test Distance: 6.360m [K=1.0000]
Remarks:

LED Avg.L Report

Test:U:24.00V I:0.1739A P:4.174W PF:1.000 Freq:0Hz Lamp Flux:38.3887x1 lm		
NAME: SF18-24V-5050-72-RGB-B	TYPE:	WEIGHT:
SPEC.:	DIM.: Length=1m	SERIAL No.:
MFR.: OLympia lighting	SUR.:	Shielding Angle:

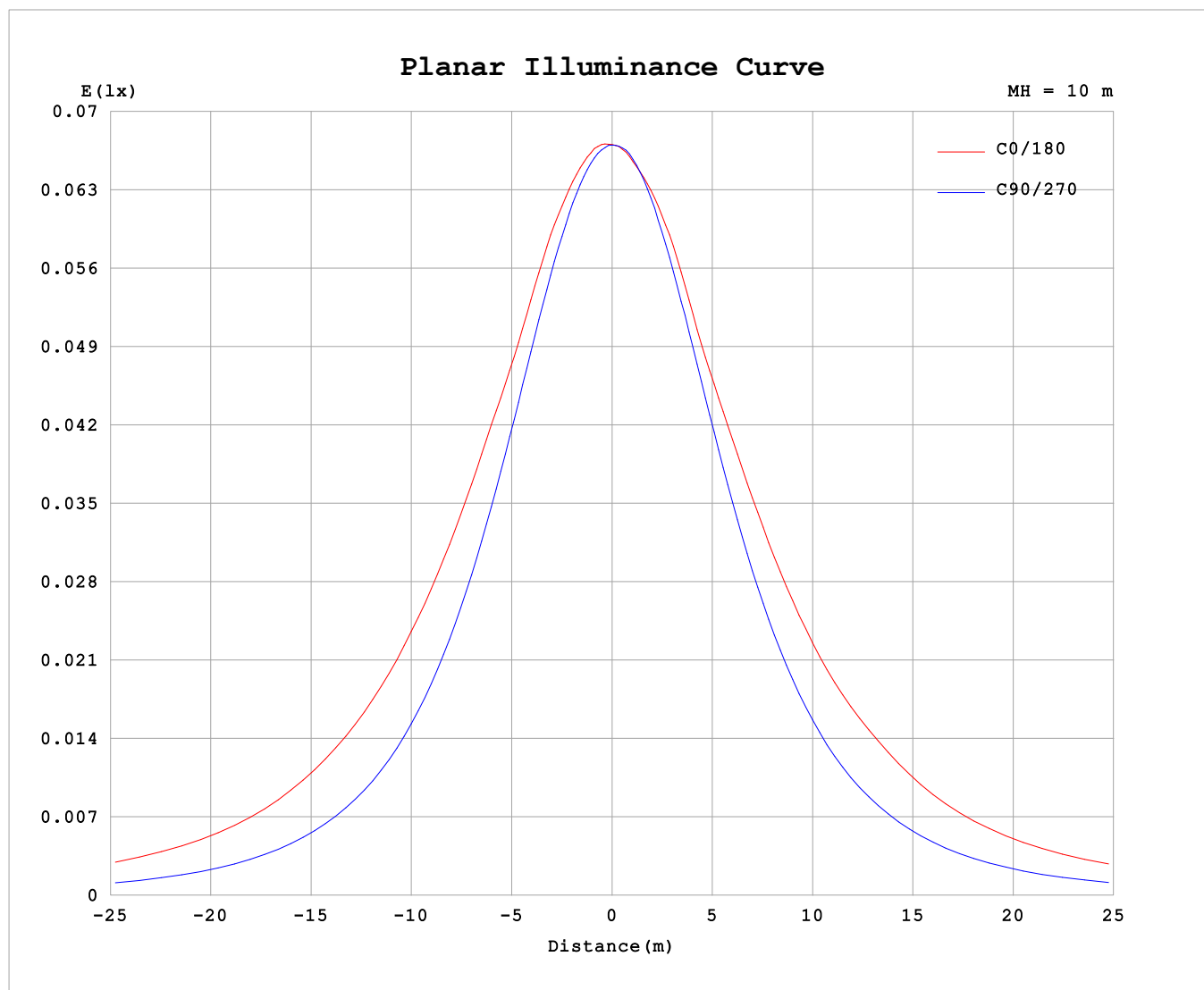
AvgL	cd/m2
L_0~180 (65) av	820
L_0~180 (75) av	1154
L_0~180 (85) av	2821
L_90~270 (65) av	355
L_90~270 (75) av	355
L_90~270 (85) av	412
L_45 (65) av	608
L_45 (75) av	822
L_45 (85) av	1845

Standard: GB/T 29293-2012

C Range: 0 - 360DEG
C Interval: 30.0DEG
Test Speed: HIGH
Temperature:25.3℃
Operators:
Test Date:2025-03-17

γ Range: 0 - 180DEG
γ Interval: 1.0DEG
Test System:EVERFINE GO-2000B_V1 SYSTEM V2.00.488
Humidity:65.0%
Test Distance:6.360m [K=1.0000]
Remarks:

Planar Illuminance Curve



C Range: 0 - 360DEG
C Interval: 30.0DEG
Test Speed: HIGH
Temperature: 25.3 °C
Operators:
Test Date: 2025-03-17

γ Range: 0 - 180DEG
 γ Interval: 1.0DEG
Test System: EVERFINE GO-2000B_V1 SYSTEM V2.00.488
Humidity: 65.0%
Test Distance: 6.360m [K=1.0000]
Remarks:

LUMINOUS DISTRIBUTION INTENSITY DATA

Test:U:24.00V I:0.1739A P:4.174W PF:1.000 Freq:0Hz Lamp Flux:38.3887x1 lm																	
NAME: SF18-24V-5050-72-RGB-B									TYPE:						WEIGHT:		
SPEC.:									DIM.: Length=1m						SERIAL No.:		
MFR.: OLYMPIA lighting									SUR.:						Shielding Angle:		

Table--1

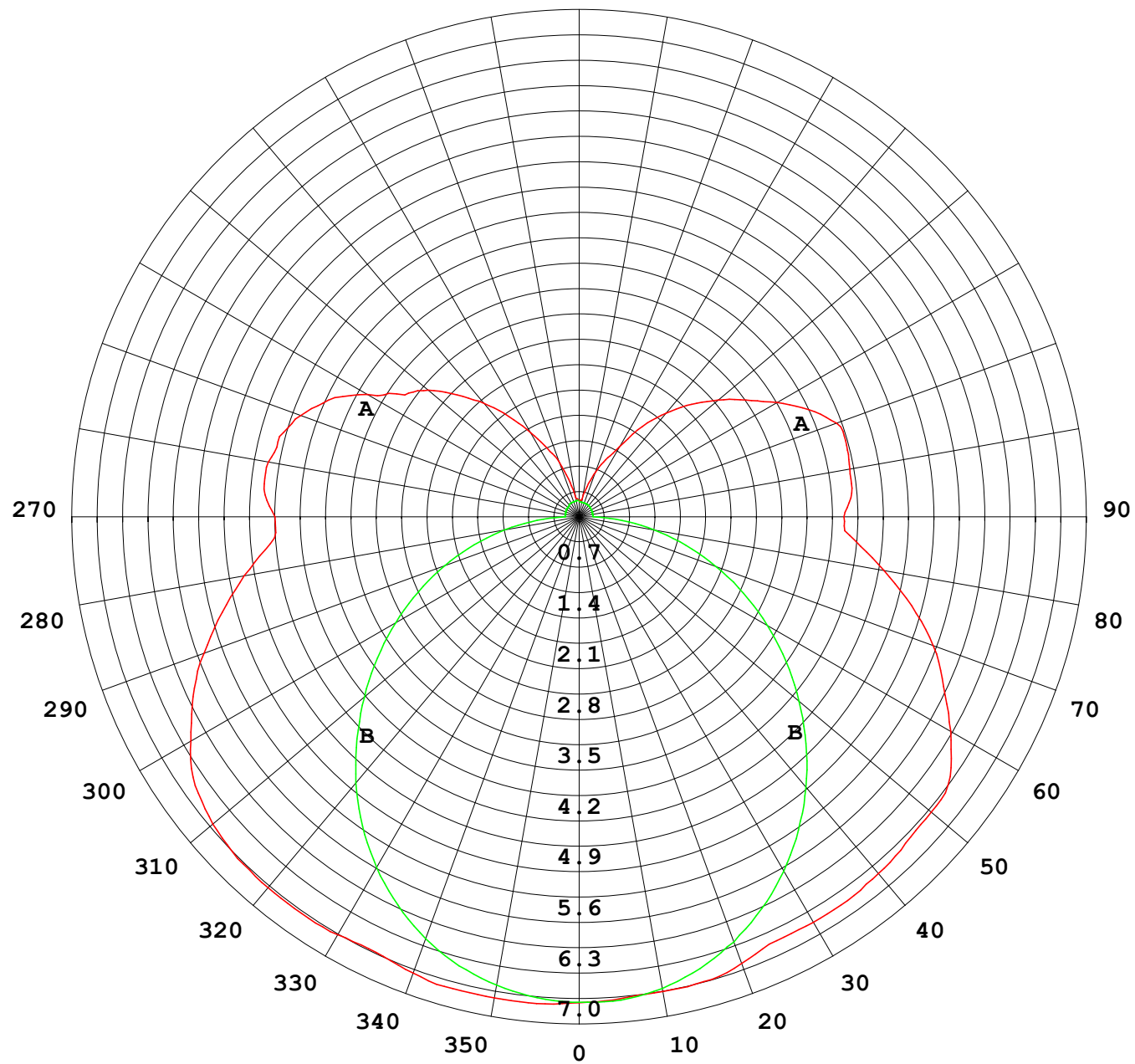
UNIT: cd

C (DEG) γ (DEG)	0	30	60	90	120	150	180	210	240	270	300	330						
0	6.71	6.71	6.71	6.71	6.71	6.71	6.71	6.71	6.71	6.71	6.71	6.71						
5	6.75	6.71	6.71	6.67	6.69	6.67	6.68	6.68	6.68	6.71	6.70	6.75						
10	6.75	6.68	6.67	6.57	6.60	6.61	6.66	6.61	6.59	6.62	6.66	6.74						
15	6.75	6.64	6.54	6.43	6.45	6.59	6.65	6.60	6.44	6.46	6.53	6.70						
20	6.71	6.58	6.37	6.21	6.33	6.51	6.57	6.52	6.32	6.25	6.37	6.65						
25	6.64	6.45	6.19	5.93	6.15	6.33	6.46	6.35	6.15	5.98	6.19	6.53						
30	6.67	6.32	5.95	5.60	5.90	6.19	6.47	6.21	5.91	5.66	5.97	6.42						
35	6.69	6.27	5.65	5.22	5.57	6.10	6.47	6.14	5.59	5.29	5.68	6.36						
40	6.69	6.15	5.33	4.80	5.21	6.01	6.43	6.03	5.24	4.88	5.36	6.24						
45	6.67	6.01	4.95	4.35	4.84	5.85	6.38	5.88	4.87	4.44	5.00	6.11						
50	6.60	5.87	4.55	3.87	4.43	5.68	6.35	5.71	4.48	3.97	4.61	5.96						
55	6.47	5.67	4.10	3.40	4.01	5.48	6.26	5.51	4.05	3.49	4.16	5.77						
60	6.19	5.44	3.74	2.93	3.63	5.29	5.93	5.34	3.67	3.01	3.79	5.55						
65	5.88	5.18	3.40	2.45	3.26	4.95	5.55	5.00	3.29	2.51	3.45	5.28						
70	5.52	4.86	3.06	1.97	2.92	4.56	5.20	4.60	2.93	2.02	3.10	4.94						
75	5.10	4.40	2.69	1.51	2.58	4.16	4.75	4.18	2.58	1.53	2.74	4.48						
80	4.70	3.96	2.31	1.04	2.21	3.67	4.27	3.70	2.20	1.05	2.34	4.04						
85	4.28	3.54	1.89	0.59	1.79	3.19	3.83	3.20	1.78	0.60	1.92	3.60						
90	4.20	3.39	1.58	0.20	1.46	2.94	3.66	2.91	1.42	0.20	1.60	3.40						
95	4.37	3.50	1.58	0.20	1.42	3.03	3.78	2.97	1.38	0.19	1.61	3.49						
100	4.36	3.61	1.34	0.20	1.37	3.22	3.80	3.14	1.34	0.19	1.36	3.61						
105	4.29	3.41	1.23	0.20	1.34	3.25	3.83	3.23	1.31	0.19	1.26	3.55						
110	4.09	3.14	1.08	0.20	1.33	3.08	3.78	3.06	1.31	0.19	1.24	3.25						
115	3.82	2.78	1.19	0.20	1.32	2.79	3.50	2.79	1.29	0.20	1.21	2.96						
120	3.38	2.41	1.11	0.21	1.23	2.52	3.16	2.53	1.20	0.20	1.13	2.56						
125	2.94	2.36	0.95	0.21	1.10	2.30	2.82	2.31	1.09	0.20	0.93	2.45						
130	2.72	2.13	0.85	0.21	0.96	2.06	2.51	2.06	0.93	0.21	0.85	2.19						
135	2.38	1.71	0.70	0.21	0.83	1.79	2.20	1.81	0.80	0.21	0.70	1.76						
140	2.05	1.35	0.59	0.22	0.70	1.51	1.87	1.53	0.68	0.21	0.58	1.37						
145	1.69	1.02	0.49	0.22	0.59	1.20	1.52	1.23	0.55	0.21	0.48	1.06						
150	1.34	0.80	0.41	0.22	0.47	0.95	1.11	0.94	0.44	0.21	0.38	0.80						
155	1.05	0.61	0.34	0.22	0.40	0.76	0.87	0.73	0.38	0.21	0.30	0.63						
160	0.80	0.42	0.31	0.22	0.34	0.56	0.65	0.57	0.32	0.21	0.27	0.44						
165	0.49	0.29	0.27	0.22	0.30	0.40	0.43	0.41	0.27	0.21	0.24	0.33						
170	0.27	0.24	0.26	0.23	0.28	0.29	0.25	0.31	0.25	0.21	0.23	0.27						
175	0.24	0.23	0.24	0.23	0.27	0.26	0.23	0.28	0.24	0.21	0.22	0.25						
180	0.23	0.23	0.23	0.23	0.23	0.23	0.23	0.24	0.23	0.22	0.22	0.23						

C Range: 0 - 360DEG
C Interval: 30.0DEG
Test Speed: HIGH
Temperature:25.3℃
Operators:
Test Date:2025-03-17

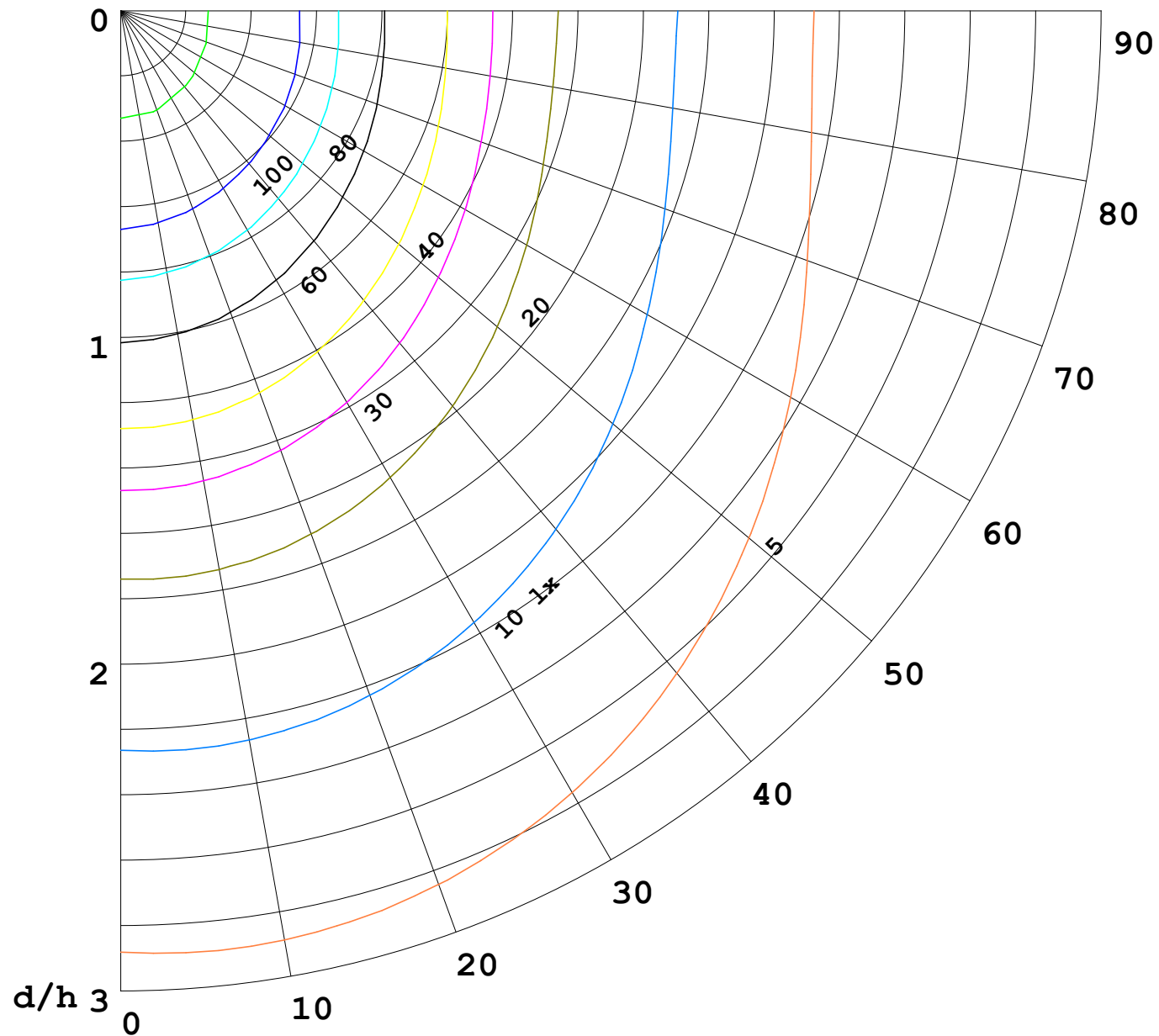
γ Range: 0 - 180DEG
γ Interval: 1.0DEG
Test System:EVERFINE GO-2000B_V1 SYSTEM V2.00.488
Humidity:65.0%
Test Distance:6.360m [K=1.0000]
Remarks:

I (cd)



1000 lm

$\kappa = 1$



F = 1000 lm
 K = 0.7
 Hcc = 0.8 m
 Hfc = 0.0 m
 Eave = 100 lx

	Pcc	Pw	Pfc
—————	70	50	30
—————	50	30	20

