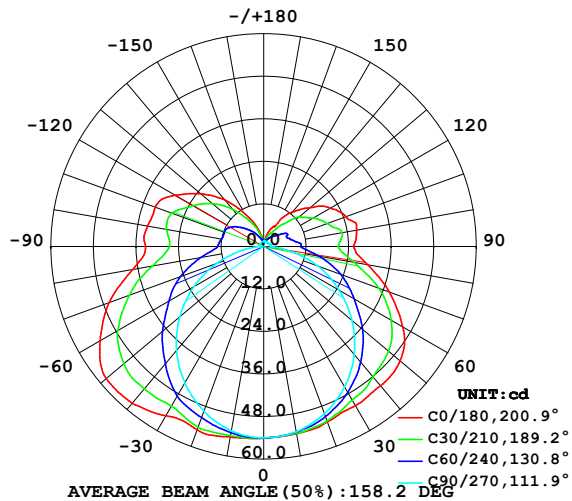


## LUMINAIRE PHOTOMETRIC TEST REPORT

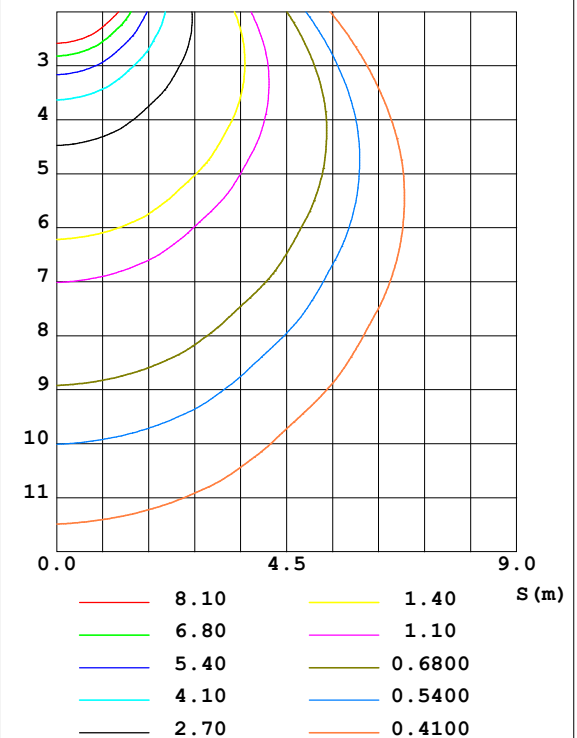
Test:U:24.00V I:0.2358A P:5.659W PF:1.000 Lamp Flux:302.477x1 lm		
NAME: SF18-24V-5050-70-SPI4-3000-W	TYPE: 硅胶	WEIGHT:
DIM.: 16.5mm*16.5mm	SPEC.:	SERIAL No.:2022042901
MFR.: OLYMPIA	SUR.:1*0.0165	PROTECTION ANGLE:

DATA OF LAMP		PHOTOMETRIC DATA Eff: 53.45 lm/W			
MODEL	5050	I <sub>max</sub> (cd)	58.09	S/MH (C0/180)	1.46
NOMINAL POWER (W)	4.5	LOR (%)	100.0	S/MH (C90/270)	1.26
RATED VOLTAGE (V)	24	TOTAL FLUX (lm)	302.47	η UP, DN (C0-180)	12.3, 37.1
NOMINAL FLUX (lm)	302.477	CIE CLASS	SEMI-D.	η UP, DN (C180-360)	13.1, 37.4
LAMPS INSIDE	1	η up (%)	25.4	CIBSE SHR NOM	1.50
TEST VOLTAGE (V)	24.0	η down (%)	74.6	CIBSE SHR MAX	1.55

LUMINOUS INTENSITY DISTRIBUTION DIAGRAM



C0 PLANE ISOLUX DIAGRAM (UNIT:lx)



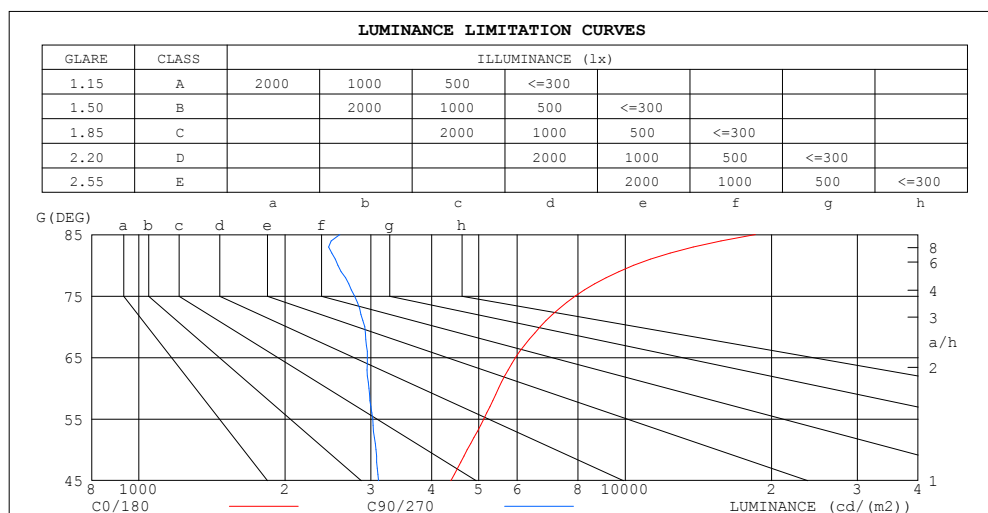
C Range: 0 - 360DEG  
C Interval: 30.0DEG  
Test Speed: HIGH  
Temperature: 25.3DEG  
Operators: HXJ  
Test Date: 2022-04-29

γ Range: 0 - 180DEG  
γ Interval: 1.0DEG  
Test System: EVERFINE GO-2000B\_V1 SYSTEM V2.0.269  
Humidity: 65.0%  
Test Distance: 9.200m [K=1.0000]  
Remarks:

ZONAL FLUX DIAGRAM  
AND LUMINANCE LIMITATION CURVES

ZONAL FLUX DIAGRAM:

$\gamma$	C0	C45	C90	C135	C180	C225	C270	C315	$\gamma$	$\Phi$ zone	$\Phi$ total	%lum, lamp
10	53.61	53.36	53.05	53.93	54.60	53.78	52.78	53.06	0- 10	5.131	5.131	1.7,1.7
20	52.68	51.74	50.16	53.26	55.05	52.84	49.38	51.19	10- 20	14.98	20.11	6.65,6.65
30	51.81	48.76	45.68	51.01	55.17	50.40	44.46	47.98	20- 30	23.45	43.57	14.4,14.4
40	51.32	45.30	39.76	48.60	57.80	47.84	38.28	44.30	30- 40	30.19	73.76	24.4,24.4
50	50.22	41.24	32.59	45.24	58.00	44.38	30.93	40.05	40- 50	34.66	108.4	35.8,35.8
60	45.31	35.45	24.54	40.05	53.28	39.20	22.74	34.20	50- 60	35.85	144.3	47.7,47.7
70	37.74	28.88	16.45	33.48	46.42	32.69	14.12	27.70	60- 70	33.30	177.6	58.7,58.7
80	29.81	20.81	7.356	25.49	37.55	24.95	5.836	19.78	70- 80	27.42	205.0	67.8,67.8
90	25.41	15.85	1.955	20.30	33.35	19.80	0.9654	14.97	80- 90	20.53	225.5	74.6,74.6
100	26.67	15.69	1.885	20.41	33.30	19.99	1.006	14.96	90-100	18.64	244.1	80.7,80.7
110	24.75	13.13	1.814	20.03	32.55	19.70	1.040	13.39	100-110	17.61	261.8	86.5,86.5
120	21.75	11.74	1.618	17.15	28.96	16.94	1.111	11.82	110-120	15.08	276.8	91.5,91.5
130	17.05	8.998	1.518	13.78	23.16	13.64	1.181	9.044	120-130	11.34	288.2	95.3,95.3
140	12.78	5.915	1.446	10.03	17.11	9.859	1.256	5.879	130-140	7.430	295.6	97.7,97.7
150	6.786	3.643	1.442	6.344	10.73	6.270	1.312	3.594	140-150	4.118	299.7	99.1,99.1
160	4.632	2.369	1.478	3.786	6.106	3.672	1.362	2.260	150-160	1.896	301.6	99.7,99.7
170	1.715	1.626	1.499	2.083	1.899	2.031	1.422	1.591	160-170	0.6922	302.3	99.9,99.9
180	1.462	1.505	1.503	1.568	1.478	1.566	1.493	1.515	170-180	0.1578	302.5	100,100
DEG	LUMINOUS INTENSITY:cd									UNIT:lm		



LUMINANCE cd/(m2)		
G (DEG)	C0/180	C90/270
85	18513	2589
80	10403	2567
75	7897	2776
70	6687	2915
65	5950	2953
60	5493	2975
55	5122	3026
50	4735	3073
45	4384	3112

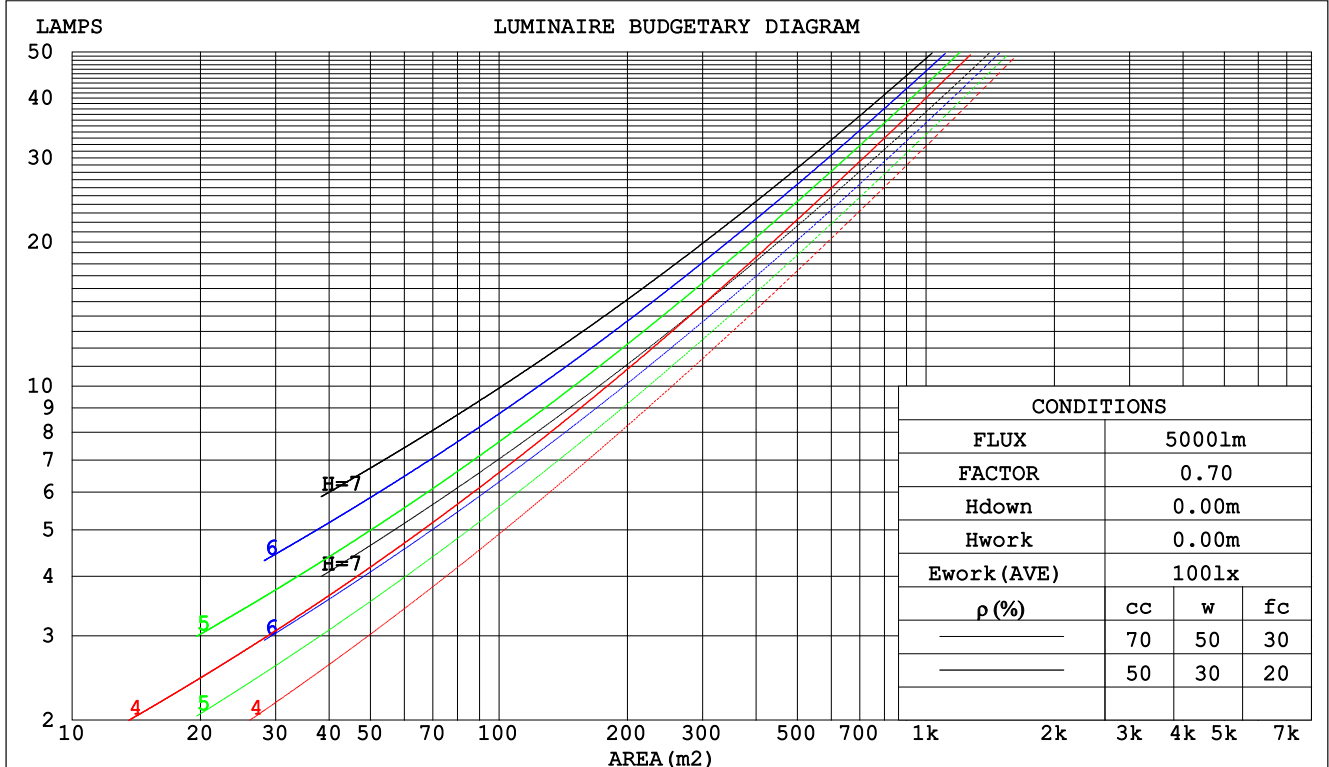
C Range: 0 - 360DEG  
C Interval: 30.0DEG  
Test Speed: HIGH  
Temperature:25.3DEG  
Operators:HXJ  
Test Date:2022-04-29

$\gamma$  Range: 0 - 180DEG  
 $\gamma$  Interval: 1.0DEG  
Test System:EVERFINE GO-2000B\_V1 SYSTEM V2.0.269  
Humidity:65.0%  
Test Distance:9.200m [K=1.0000]  
Remarks:

## CU AND LUMINAIRE BUDGETARY ESTIMATE DIAGRAM

Test:U:24.00V I:0.2358A P:5.659W PF:1.000 Lamp Flux:302.477x1 lm		
NAME: SF18-24V-5050-70-SPI4-3000-W	TYPE: 硅胶	WEIGHT:
DIM.: 16.5mm*16.5mm	SPEC.:	SERIAL No.:2022042901
MFR.: OLYMPIA	SUR.:1*0.0165	PROTECTION ANGLE:

$\rho_{cc}$	80%			70%			50%			30%			10%			0
$\rho_w$	50%	30%	10%	50%	30%	10%	50%	30%	10%	50%	30%	10%	50%	30%	10%	0
$\rho_{fc}$	20%			20%			20%			20%			20%			0
RCR	Coefficients of Utilization(CU)															
0.0	1.13	1.13	1.13	1.07	1.07	1.07	.97	.97	.97	.87	.87	.87	.79	.79	.79	.75
1.0	.94	.89	.84	.89	.85	.80	.80	.77	.73	.72	.69	.66	.64	.62	.60	.56
2.0	.80	.73	.66	.76	.69	.63	.69	.63	.58	.61	.57	.53	.55	.51	.48	.44
3.0	.70	.61	.53	.66	.58	.51	.59	.53	.47	.53	.48	.43	.47	.43	.39	.36
4.0	.61	.52	.44	.58	.49	.43	.52	.45	.39	.47	.41	.36	.42	.37	.33	.30
5.0	.54	.44	.38	.51	.43	.36	.46	.39	.33	.42	.35	.31	.37	.32	.28	.25
6.0	.48	.39	.32	.46	.37	.31	.41	.34	.29	.37	.31	.27	.33	.28	.24	.22
7.0	.43	.34	.28	.41	.33	.27	.37	.30	.25	.34	.28	.23	.30	.25	.21	.19
8.0	.39	.31	.25	.37	.29	.24	.34	.27	.22	.31	.25	.21	.28	.23	.19	.17
9.0	.36	.27	.22	.34	.26	.21	.31	.24	.20	.28	.22	.18	.26	.21	.17	.15
10.0	.33	.25	.20	.31	.24	.19	.29	.22	.18	.26	.20	.16	.24	.19	.15	.13



C Range: 0 - 360DEG  
C Interval: 30.0DEG  
Test Speed: HIGH  
Temperature:25.3DEG  
Operators:HXJ  
Test Date:2022-04-29

$\gamma$  Range: 0 - 180DEG  
 $\gamma$  Interval: 1.0DEG  
Test System:EVERFINE GO-2000B\_V1 SYSTEM V2.0.269  
Humidity:65.0%  
Test Distance:9.200m [K=1.0000]  
Remarks:

## WEC AND CCEC

Test:U:24.00V I:0.2358A P:5.659W PF:1.000 Lamp Flux:302.477x1 lm		
NAME: SF18-24V-5050-70-SPI4-3000-W	TYPE: 硅胶	WEIGHT:
DIM.: 16.5mm*16.5mm	SPEC.:	SERIAL No.:2022042901
MFR.: OLYMPIA	SUR.:1*0.0165	PROTECTION ANGLE:

pcc	80%			70%			50%			30%			10%			0	
pw	50%	30%	10%	50%	30%	10%	50%	30%	10%	50%	30%	10%	50%	30%	10%	0	
pfc	20%			20%			20%			20%			20%			0	
RCR	RCR:Room Cavity Ratio						Wall Exitance Coefficients(WEC)										
0.0																	
1.0	.379	.215	.068	.364	.207	.066	.336	.193	.061	.310	.179	.057	.286	.166	.053		
2.0	.329	.181	.055	.316	.174	.054	.290	.161	.050	.267	.150	.047	.245	.139	.044		
3.0	.293	.156	.047	.281	.150	.045	.258	.140	.042	.237	.130	.040	.217	.120	.037		
4.0	.264	.137	.040	.253	.132	.039	.232	.123	.037	.213	.114	.034	.194	.106	.032		
5.0	.240	.122	.035	.230	.118	.034	.211	.110	.032	.193	.102	.030	.176	.094	.028		
6.0	.220	.110	.032	.211	.107	.031	.193	.099	.029	.177	.092	.027	.162	.085	.025		
7.0	.203	.100	.028	.195	.097	.028	.179	.090	.026	.163	.084	.024	.149	.078	.023		
8.0	.188	.092	.026	.181	.089	.025	.166	.083	.024	.152	.077	.022	.139	.071	.021		
9.0	.176	.085	.024	.168	.082	.023	.155	.076	.022	.142	.071	.020	.129	.066	.019		
10.0	.164	.079	.022	.158	.076	.021	.145	.071	.020	.133	.066	.019	.121	.061	.018		

pcc	80%			70%			50%			30%			10%			0
pw	50%	30%	10%	50%	30%	10%	50%	30%	10%	50%	30%	10%	50%	30%	10%	0
pfc	20%			20%			20%			20%			20%			0
RCR	RCR:Room Cavity Ratio						Ceiling Cavity Exitance Coefficients(CCEC)									
0.0	.384	.384	.384	.328	.328	.328	.224	.224	.224	.129	.129	.129	.041	.041	.041	
1.0	.381	.351	.324	.326	.301	.279	.223	.207	.193	.128	.120	.112	.041	.039	.036	
2.0	.374	.328	.290	.320	.283	.251	.220	.196	.175	.127	.114	.103	.041	.037	.033	
3.0	.367	.312	.269	.314	.269	.233	.216	.187	.163	.125	.109	.096	.040	.035	.032	
4.0	.359	.300	.255	.308	.259	.221	.212	.181	.156	.123	.106	.092	.039	.034	.030	
5.0	.352	.290	.245	.302	.251	.213	.208	.176	.151	.121	.103	.089	.039	.034	.029	
6.0	.345	.283	.238	.296	.245	.207	.204	.171	.147	.119	.101	.087	.038	.033	.029	
7.0	.338	.276	.233	.290	.239	.203	.201	.168	.144	.117	.099	.086	.038	.032	.028	
8.0	.331	.271	.229	.285	.235	.200	.197	.165	.142	.115	.097	.084	.037	.032	.028	
9.0	.325	.266	.226	.280	.231	.197	.194	.162	.140	.113	.096	.084	.037	.031	.028	
10.0	.319	.262	.224	.275	.227	.195	.191	.160	.139	.111	.095	.083	.036	.031	.027	

C Range: 0 - 360DEG  
 C Interval: 30.0DEG  
 Test Speed: HIGH  
 Temperature:25.3DEG  
 Operators:HXJ  
 Test Date:2022-04-29

γ Range: 0 - 180DEG  
 γ Interval: 1.0DEG  
 Test System:EVERFINE GO-2000B\_V1 SYSTEM V2.0.269  
 Humidity:65.0%  
 Test Distance:9.200m [K=1.0000]  
 Remarks:

## Uncorrected UGR Table

Test:U:24.00V I:0.2358A P:5.659W PF:1.000 Lamp Flux:302.477x1 lm											
NAME: SF18-24V-5050-70-SPI4-3000-W						TYPE:硅胶		WEIGHT:			
DIM.: 16.5mm*16.5mm						SPEC.:		SERIAL No.:2022042901			
MFR.: OLYMPIA						SUR.:1*0.0165		PROTECTION ANGLE:			
ceiling/cavity	0.7	0.7	0.5	0.5	0.3	0.7	0.7	0.5	0.5	0.3	
walls	0.5	0.3	0.5	0.3	0.3	0.5	0.3	0.5	0.3	0.3	
working plane	0.2	0.2	0.2	0.2	0.2	0.2	0.2	0.2	0.2	0.2	
Room dimensions	Viewed crosswise					Viewed endwise					
x = 2H y = 2H	17.4	18.7	18.0	19.3	20.0	14.7	16.0	15.3	16.6	17.3	
	20.0	21.1	20.6	21.8	22.5	16.4	17.6	17.1	18.3	19.0	
	21.3	22.4	21.9	23.1	23.8	17.2	18.3	17.8	18.9	19.7	
	22.7	23.8	23.4	24.5	25.2	17.7	18.8	18.4	19.4	20.2	
	23.5	24.5	24.2	25.2	26.0	17.9	18.9	18.6	19.6	20.4	
	24.4	25.4	25.1	26.1	26.9	18.0	19.0	18.7	19.7	20.5	
4H	2H	17.9	19.0	18.5	19.7	20.4	16.0	17.1	16.6	17.8	18.5
	3H	20.7	21.7	21.4	22.4	23.2	17.9	18.8	18.5	19.5	20.3
	4H	22.2	23.1	22.9	23.8	24.7	18.7	19.6	19.4	20.3	21.2
	6H	23.9	24.7	24.6	25.4	26.3	19.4	20.2	20.2	21.0	21.9
	8H	24.8	25.5	25.5	26.3	27.2	19.7	20.5	20.5	21.2	22.1
	12H	25.8	26.5	26.6	27.3	28.2	19.9	20.6	20.7	21.4	22.3
8H	4H	22.5	23.3	23.3	24.0	24.9	19.7	20.5	20.5	21.2	22.1
	6H	24.4	25.1	25.2	25.8	26.8	20.7	21.4	21.5	22.1	23.1
	8H	25.5	26.1	26.3	26.9	27.9	21.2	21.7	22.0	22.5	23.5
	12H	26.9	27.3	27.7	28.2	29.1	21.6	22.1	22.4	22.9	23.8
12H	4H	22.5	23.2	23.3	24.0	24.9	20.0	20.7	20.8	21.5	22.4
	6H	24.5	25.1	25.3	25.9	26.8	21.2	21.8	22.0	22.6	23.5
	8H	25.7	26.2	26.5	27.0	28.0	21.8	22.3	22.6	23.1	24.1
Variations with the observer position at spacings:											
S = 1.0H	+ 0.1 / - 0.1					+ 0.1 / - 0.1					
1.5H	+ 0.2 / - 0.3					+ 0.2 / - 0.3					
2.0H	+ 0.2 / - 0.3					+ 0.2 / - 0.4					

CIE Pub.117 Corrected 302.5 lm Total Lamp Luminous Flux. (8log(F/F0) = -4.2)

C Range: 0 - 360DEG  
 C Interval: 30.0DEG  
 Test Speed: HIGH  
 Temperature:25.3DEG  
 Operators:HXJ  
 Test Date:2022-04-29

γ Range: 0 - 180DEG  
 γ Interval: 1.0DEG  
 Test System:EVERFINE GO-2000B\_V1 SYSTEM V2.0.269  
 Humidity:65.0%  
 Test Distance:9.200m [K=1.0000]  
 Remarks:

## UTILIZATION FACTORS TABLE

Test:U:24.00V I:0.2358A P:5.659W PF:1.000 Lamp Flux:302.477x1 lm		
NAME: SF18-24V-5050-70-SPI4-3000-W	TYPE: 硅胶	WEIGHT:
DIM.: 16.5mm*16.5mm	SPEC.:	SERIAL No.:2022042901
MFR.: OLYMPIA	SUR.:1*0.0165	PROTECTION ANGLE:

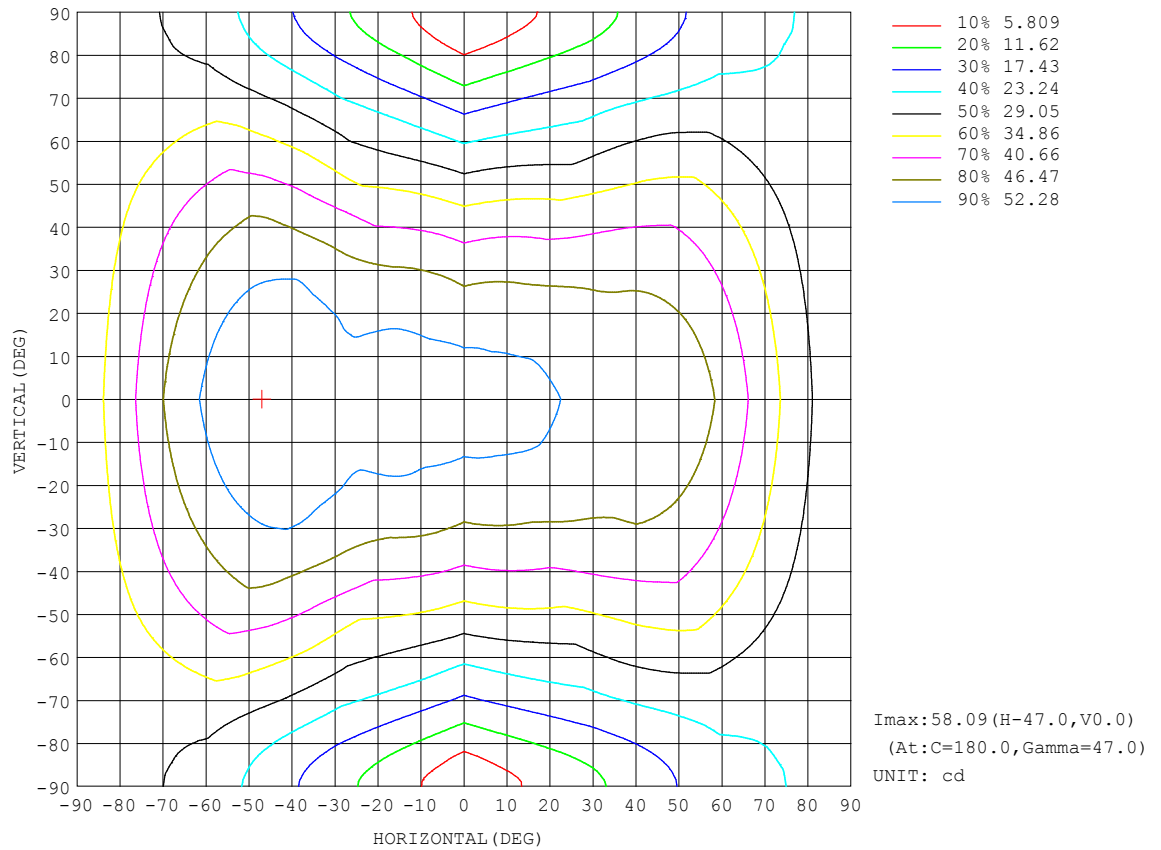
REFLECTANCE										
Ceiling	0.8	0.8	0.8	0.7	0.7	0.7	0.5	0.5	0.5	0
Walls	0.7	0.5	0.3	0.7	0.5	0.3	0.7	0.5	0.3	0
Working plane	0.2	0.2	0.2	0.2	0.2	0.2	0.2	0.2	0.2	0
ROOM INDEX	UTILIZATION FACTORS (PERCENT) $k(RI) \times RCR = 5$									
$k = 0.60$	45	32	25	44	32	25	41	31	24	17
0.80	54	41	33	52	40	32	49	38	31	23
1.00	62	49	40	60	47	39	55	47	38	29
1.25	69	56	47	66	54	46	61	51	44	34
1.50	74	62	53	71	60	51	65	56	49	37
2.00	82	70	62	78	68	60	71	63	56	43
2.50	86	76	68	82	73	65	75	67	61	47
3.00	90	81	73	86	77	70	78	71	66	50
4.00	95	87	80	90	83	77	82	76	71	55
5.00	98	91	85	93	87	82	84	79	75	58
ROOM INDEX	UF(total)									Direct
According to DIN EN 13032-2 2004			Suspended					SHRNM = 1.25		

C Range: 0 - 360DEG  
 C Interval: 30.0DEG  
 Test Speed: HIGH  
 Temperature:25.3DEG  
 Operators:HXJ  
 Test Date:2022-04-29

$\gamma$  Range: 0 - 180DEG  
 $\gamma$  Interval: 1.0DEG  
 Test System:EVERFINE GO-2000B\_V1 SYSTEM V2.0.269  
 Humidity:65.0%  
 Test Distance:9.200m [K=1.0000]  
 Remarks:

## ISOCANDELA DIAGRAM

Test:U:24.00V I:0.2358A P:5.659W PF:1.000 Lamp Flux:302.477x1 lm		
NAME: SF18-24V-5050-70-SPI4-3000-W	TYPE: 硅胶	WEIGHT:
DIM.: 16.5mm*16.5mm	SPEC.:	SERIAL No.:2022042901
MFR.: OLYMPIA	SUR.:1*0.0165	PROTECTION ANGLE:

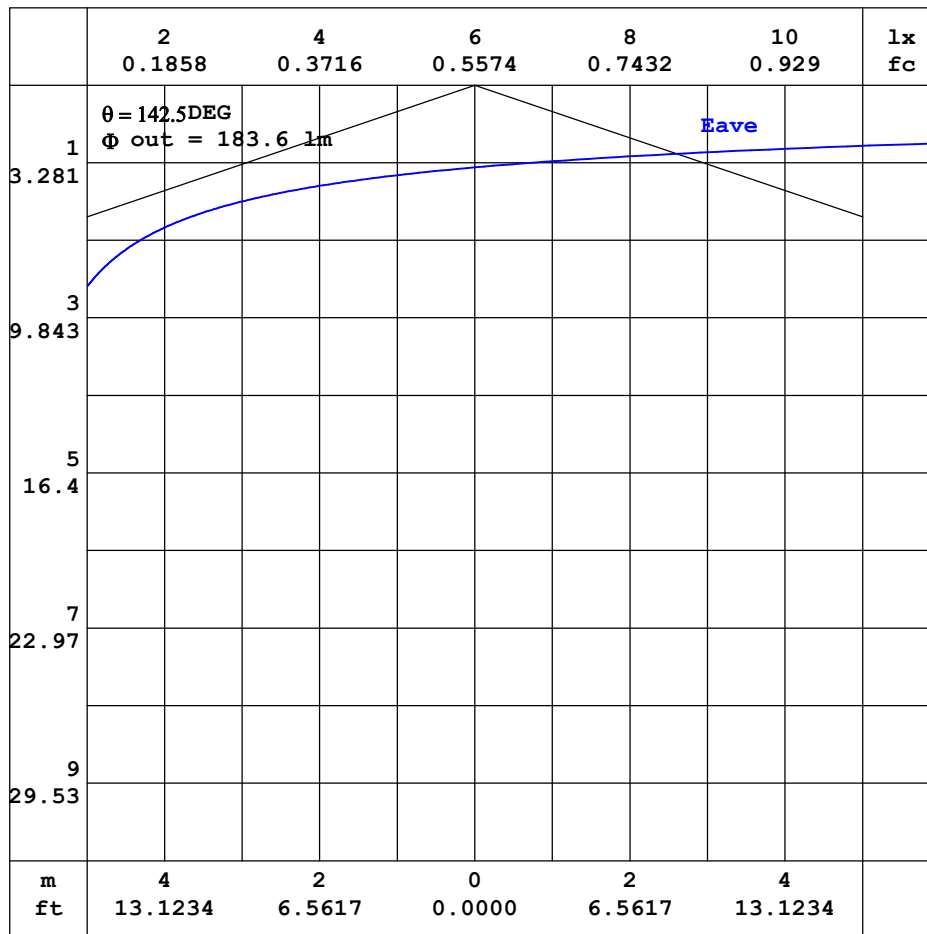


C Range: 0 - 360DEG  
C Interval: 30.0DEG  
Test Speed: HIGH  
Temperature:25.3DEG  
Operators:HXJ  
Test Date:2022-04-29

$\gamma$  Range: 0 - 180DEG  
 $\gamma$  Interval: 1.0DEG  
Test System:EVERFINE GO-2000B\_V1 SYSTEM V2.0.269  
Humidity:65.0%  
Test Distance:9.200m [K=1.0000]  
Remarks:

## AAI CURVES

Test:U:24.00V I:0.2358A P:5.659W PF:1.000 Lamp Flux:302.477x1 lm		
NAME: SF18-24V-5050-70-SPI4-3000-W	TYPE: 硅胶	WEIGHT:
DIM.: 16.5mm*16.5mm	SPEC.:	SERIAL No.:2022042901
MFR.: OLYMPIA	SUR.:1*0.0165	PROTECTION ANGLE:



Note: The Curves indicate the illuminated area and the average illumination when the luminaire is at different distance.

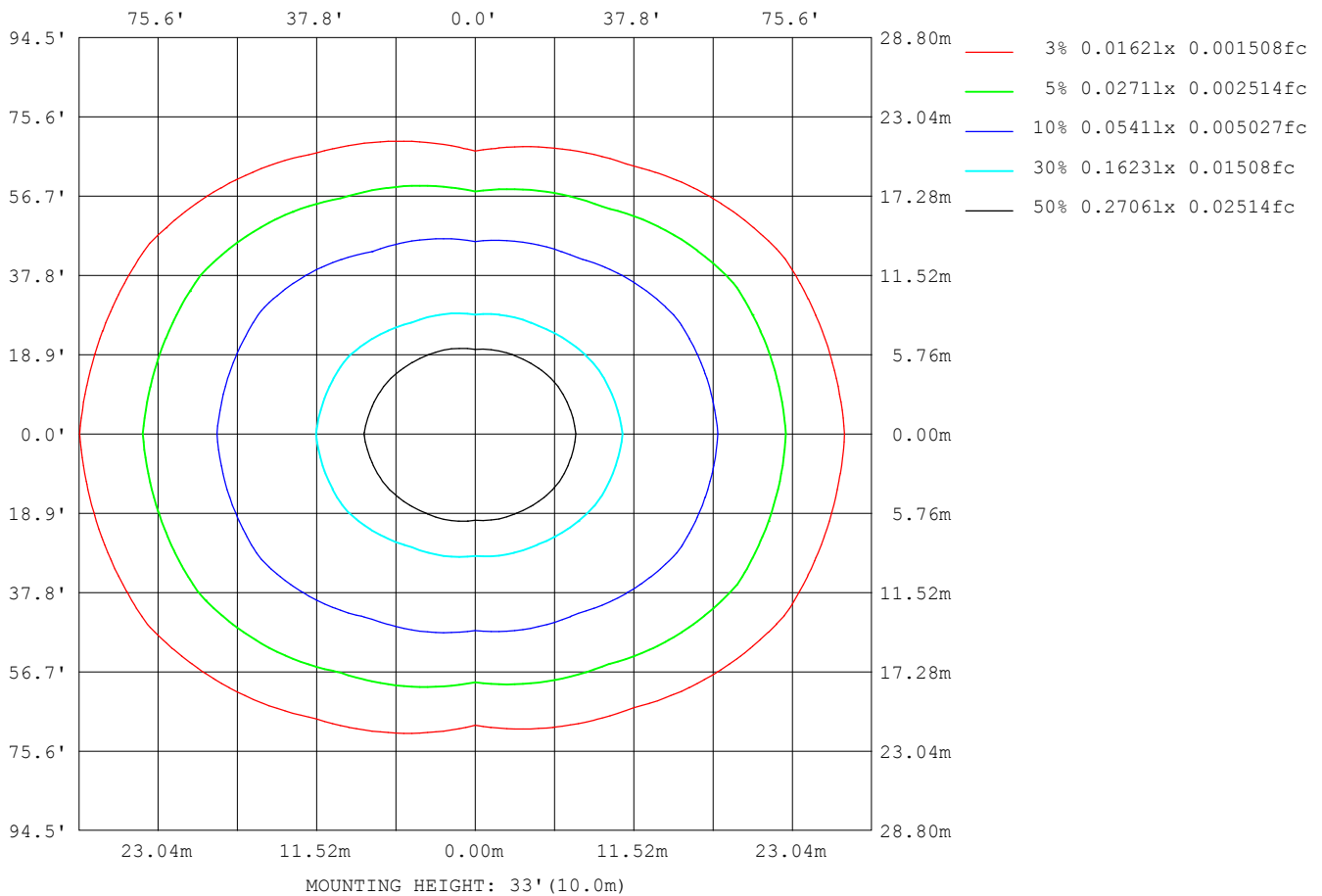
C Range: 0 - 360 DEG  
C Interval: 30.0 DEG  
Test Speed: HIGH  
Temperature: 25.3 DEG  
Operators: HXJ  
Test Date: 2022-04-29

γ Range: 0 - 180 DEG  
γ Interval: 1.0 DEG  
Test System: EVERFINE GO-2000B\_V1 SYSTEM V2.0.269  
Humidity: 65.0%  
Test Distance: 9.200m [K=1.0000]  
Remarks:



## ISOLUX DIAGRAM

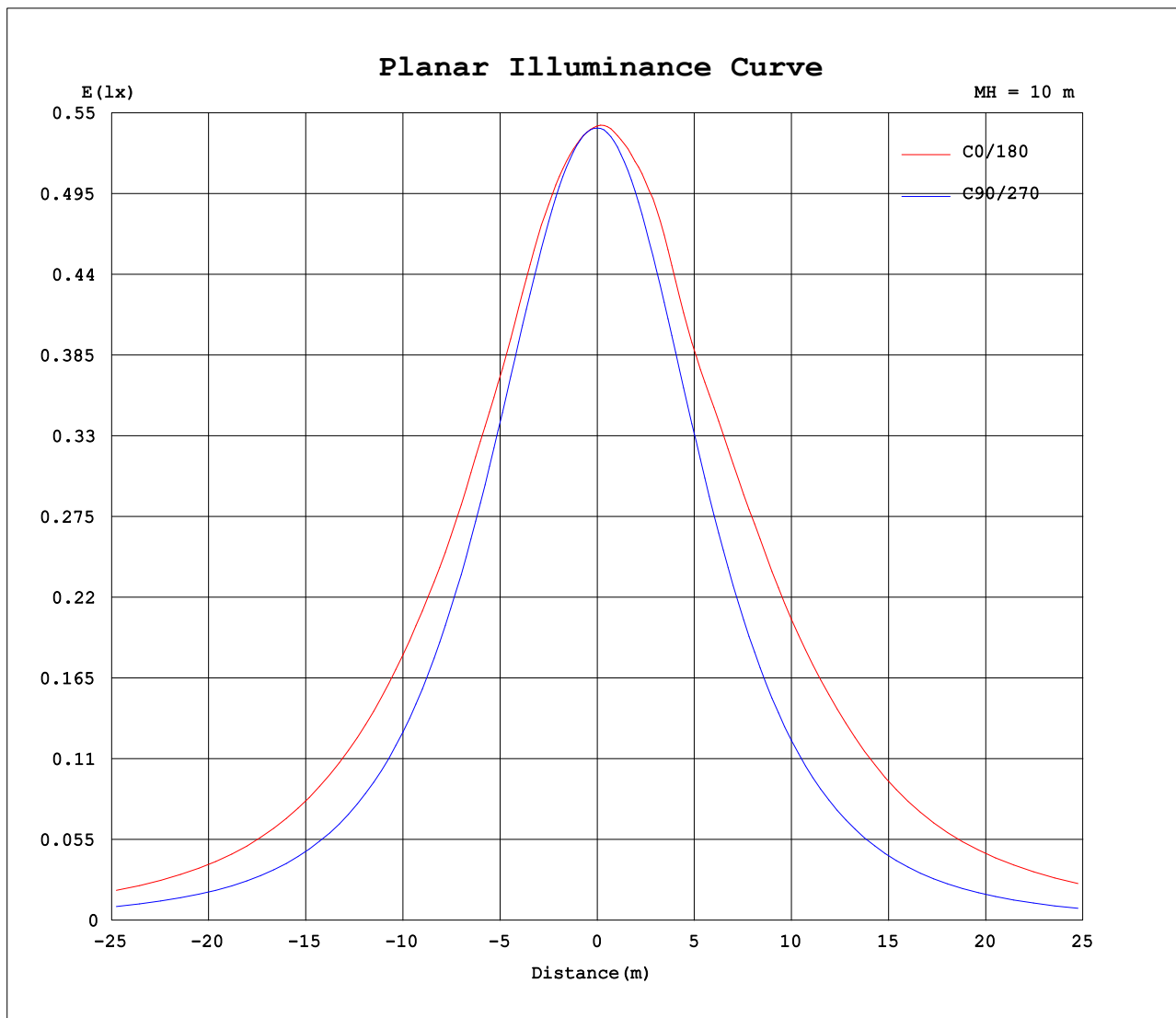
Test:U:24.00V I:0.2358A P:5.659W PF:1.000 Lamp Flux:302.477x1 lm		
NAME: SF18-24V-5050-70-SPI4-3000-W	TYPE: 硅胶	WEIGHT:
DIM.: 16.5mm*16.5mm	SPEC.:	SERIAL No.:2022042901
MFR.: OLYMPIA	SUR.:1*0.0165	PROTECTION ANGLE:



C Range: 0 - 360DEG  
C Interval: 30.0DEG  
Test Speed: HIGH  
Temperature:25.3DEG  
Operators:HXJ  
Test Date:2022-04-29

$\gamma$  Range: 0 - 180DEG  
 $\gamma$  Interval: 1.0DEG  
Test System:EVERFINE GO-2000B\_V1 SYSTEM V2.0.269  
Humidity:65.0%  
Test Distance:9.200m [K=1.0000]  
Remarks:

## Planar Illuminance Curve



C Range: 0 - 360DEG  
C Interval: 30.0DEG  
Test Speed: HIGH  
Temperature: 25.3DEG  
Operators: HXJ  
Test Date: 2022-04-29

$\gamma$  Range: 0 - 180DEG  
 $\gamma$  Interval: 1.0DEG  
Test System: EVERFINE GO-2000B\_V1 SYSTEM V2.0.269  
Humidity: 65.0%  
Test Distance: 9.200m [K=1.0000]  
Remarks:

## LUMINOUS DISTRIBUTION INTENSITY DATA

Test:U:24.00V I:0.2358A P:5.659W PF:1.000 Lamp Flux:302.477x1 lm		
NAME: SF18-24V-5050-70-SPI4-3000-W	TYPE: 硅胶	WEIGHT:
DIM.: 16.5mm*16.5mm	SPEC.:	SERIAL No.:2022042901
MFR.: OLYMPIA	SUR.:1*0.0165	PROTECTION ANGLE:

Table--1

UNIT: cd

C (DEG) γ (DEG)	0	30	60	90	120	150	180	210	240	270	300	330						
0	54.1	54.1	54.0	54.0	54.0	54.0	54.1	54.1	54.0	54.0	54.0	54.0						
5	53.8	53.8	53.8	53.8	54.0	54.2	54.3	54.2	53.9	53.7	53.5	53.6						
10	53.6	53.5	53.2	53.1	53.6	54.2	54.6	54.2	53.4	52.8	52.8	53.3						
15	53.4	53.0	52.3	51.8	52.9	54.5	55.2	54.3	52.5	51.3	51.8	52.7						
20	52.7	52.4	51.1	50.2	51.9	54.6	55.0	54.3	51.3	49.4	50.4	51.9						
25	51.8	51.3	49.4	48.1	51.0	53.3	54.2	53.0	50.3	47.1	48.5	50.7						
30	51.8	50.0	47.5	45.7	49.6	52.5	55.2	52.0	48.8	44.5	46.6	49.4						
35	51.5	49.4	45.2	42.8	47.0	52.9	56.6	52.3	46.2	41.5	44.1	48.7						
40	51.3	48.0	42.6	39.8	44.2	53.0	57.8	52.5	43.2	38.3	41.4	47.2						
45	51.2	47.0	39.6	36.3	41.3	53.1	58.1	52.5	40.2	34.7	38.2	46.2						
50	50.2	46.0	36.5	32.6	38.3	52.1	58.0	51.5	37.3	30.9	35.1	45.0						
55	48.5	44.2	32.7	28.6	34.9	50.5	56.3	49.9	33.9	26.9	31.4	43.1						
60	45.3	41.5	29.4	24.5	31.9	48.2	53.3	47.5	30.9	22.7	27.9	40.5						
65	41.5	38.3	26.4	20.6	29.2	44.8	50.0	44.2	28.2	18.5	24.9	37.3						
70	37.7	34.6	23.1	16.5	26.0	41.0	46.4	40.4	25.0	14.1	21.7	33.7						
75	33.7	30.0	19.6	11.9	22.4	37.0	41.9	36.4	21.4	9.80	18.1	29.2						
80	29.8	25.9	15.7	7.36	18.7	32.3	37.6	31.9	18.0	5.84	14.5	25.1						
85	26.6	22.6	12.3	3.72	15.3	28.7	34.2	28.4	14.7	2.49	11.3	21.9						
90	25.4	21.1	10.6	1.96	13.7	26.9	33.4	26.6	13.0	0.97	9.51	20.4						
95	26.2	21.8	10.5	1.92	13.2	27.2	33.9	26.9	12.6	0.99	9.47	21.3						
100	26.7	22.5	8.87	1.88	12.7	28.1	33.3	27.9	12.1	1.01	7.93	22.0						
105	26.6	20.6	7.80	1.85	12.4	28.4	32.6	28.2	11.9	1.02	7.34	21.1						
110	24.7	19.1	7.15	1.81	12.3	27.7	32.5	27.5	11.8	1.04	7.24	19.5						
115	23.5	17.7	7.26	1.72	12.1	25.5	31.6	25.4	11.7	1.08	7.44	18.0						
120	21.7	16.0	7.47	1.62	11.1	23.2	29.0	23.0	10.8	1.11	6.99	16.6						
125	19.9	14.4	6.17	1.56	9.96	21.2	26.0	21.1	9.77	1.15	5.94	14.3						
130	17.1	13.0	5.01	1.52	8.55	19.0	23.2	18.9	8.40	1.18	4.90	13.2						
135	14.9	10.2	4.13	1.48	7.26	16.6	20.2	16.4	7.13	1.25	4.05	10.7						
140	12.8	8.20	3.63	1.45	6.12	13.9	17.1	13.8	5.96	1.26	3.43	8.33						
145	10.6	6.00	3.13	1.44	5.04	11.0	13.9	11.0	4.97	1.29	2.92	6.19						
150	6.79	4.73	2.56	1.44	3.96	8.73	10.7	8.64	3.90	1.31	2.43	4.76						
155	5.99	3.69	2.17	1.46	3.14	6.83	8.21	6.72	3.06	1.33	2.01	3.73						
160	4.63	2.85	1.89	1.48	2.57	5.00	6.11	4.88	2.47	1.36	1.75	2.77						
165	3.09	2.05	1.65	1.49	2.09	3.32	3.78	3.25	2.00	1.40	1.55	2.03						
170	1.71	1.66	1.59	1.50	1.86	2.30	1.90	2.29	1.77	1.42	1.50	1.68						
175	1.53	1.51	1.52	1.50	1.79	1.84	1.56	1.84	1.72	1.46	1.49	1.56						
180	1.46	1.51	1.50	1.50	1.57	1.57	1.48	1.58	1.55	1.49	1.51	1.52						

C Range: 0 - 360DEG  
C Interval: 30.0DEG  
Test Speed: HIGH  
Temperature:25.3DEG  
Operators:HXJ  
Test Date:2022-04-29

γ Range: 0 - 180DEG  
γ Interval: 1.0DEG  
Test System:EVERFINE GO-2000B\_V1 SYSTEM V2.0.269  
Humidity:65.0%  
Test Distance:9.200m [K=1.0000]  
Remarks:

## Photometric Data Table [cd]

G/C	0.0	30.0	60.0	90.0	120.0	150.0	180.0	210.0	240.0	270.0
0.0	54.11	54.08	54.05	53.97	53.96	54.00	54.11	54.08	54.05	53.97
3.0	53.91	53.90	53.93	53.91	54.03	54.15	54.28	54.18	54.03	53.88
6.0	53.75	53.74	53.67	53.66	53.97	54.15	54.33	54.16	53.84	53.54
9.0	53.65	53.57	53.32	53.23	53.73	54.22	54.54	54.19	53.51	53.01
12.0	53.52	53.44	52.85	52.63	53.32	54.27	54.83	54.23	53.00	52.26
15.0	53.36	53.01	52.31	51.84	52.88	54.49	55.17	54.27	52.49	51.31
18.0	53.05	52.73	51.64	50.86	52.32	54.69	55.35	54.41	51.85	50.25
21.0	52.54	52.16	50.74	49.82	51.77	54.42	54.84	54.12	51.14	48.96
24.0	51.97	51.46	49.74	48.58	51.21	53.62	54.29	53.29	50.51	47.58
27.0	51.75	50.71	48.72	47.20	50.57	52.81	54.33	52.47	49.77	46.11
30.0	51.81	50.04	47.49	45.68	49.56	52.46	55.17	52.01	48.79	44.46
33.0	51.73	49.70	46.11	44.07	48.09	52.66	56.07	52.14	47.29	42.74
36.0	51.39	49.19	44.73	42.29	46.47	52.95	56.79	52.36	45.61	40.85
39.0	51.22	48.31	43.15	40.37	44.76	52.99	57.55	52.46	43.82	38.96
42.0	51.34	47.57	41.40	38.41	43.06	53.03	57.90	52.43	42.02	36.87
45.0	51.15	47.05	39.61	36.30	41.35	53.05	58.06	52.50	40.25	34.73
48.0	50.71	46.48	37.81	34.07	39.61	52.62	58.09	51.97	38.53	32.47
51.0	49.96	45.70	35.80	31.82	37.67	51.87	57.85	51.18	36.61	30.12
54.0	48.94	44.65	33.49	29.41	35.64	50.94	56.81	50.29	34.55	27.74
57.0	47.36	43.17	31.37	26.97	33.67	49.73	55.15	49.07	32.59	25.28
60.0	45.31	41.49	29.41	24.54	31.88	48.21	53.28	47.51	30.88	22.74
63.0	43.04	39.74	27.58	22.08	30.27	46.19	51.26	45.47	29.28	20.24
66.0	40.75	37.64	25.78	19.79	28.62	44.02	49.33	43.35	27.59	17.63
69.0	38.55	35.45	23.84	17.30	26.66	41.73	47.22	41.11	25.64	14.98
72.0	36.15	32.90	21.74	14.59	24.57	39.43	44.72	38.82	23.56	12.39
75.0	33.72	30.04	19.56	11.85	22.36	36.98	41.92	36.43	21.45	9.803
78.0	31.32	27.44	17.29	9.129	20.15	34.09	39.22	33.69	19.39	7.319
81.0	29.08	25.14	14.94	6.546	17.94	31.48	36.81	31.15	17.31	5.047
84.0	27.16	23.18	12.83	4.287	15.91	29.27	34.76	28.93	15.33	2.976
87.0	25.98	21.70	11.28	2.625	14.38	27.70	33.61	27.42	13.78	1.582
90.0	25.41	21.08	10.62	1.955	13.70	26.90	33.35	26.61	13.00	0.9654
93.0	25.89	21.47	10.54	1.922	13.43	27.02	33.81	26.64	12.82	0.9750
96.0	26.28	22.04	10.09	1.915	13.17	27.38	33.81	27.09	12.55	0.9972
99.0	26.56	22.54	9.100	1.895	12.83	27.92	33.43	27.66	12.25	1.004
102.0	26.82	22.24	8.565	1.880	12.59	28.30	33.01	28.04	11.98	1.011
105.0	26.56	20.62	7.803	1.849	12.40	28.42	32.64	28.18	11.85	1.020
108.0	25.08	19.63	7.546	1.824	12.36	28.17	32.56	27.97	11.85	1.030
111.0	24.61	18.82	7.077	1.804	12.33	27.42	32.51	27.19	11.85	1.065
114.0	23.75	18.03	7.045	1.724	12.19	26.08	31.96	25.86	11.81	1.078
117.0	22.89	17.16	7.618	1.658	11.76	24.38	30.65	24.27	11.42	1.088
120.0	21.75	16.01	7.474	1.618	11.13	23.17	28.96	23.03	10.85	1.111
123.0	20.73	14.96	6.753	1.578	10.50	22.00	27.09	21.88	10.26	1.146
126.0	19.38	14.07	5.953	1.551	9.678	20.77	25.44	20.64	9.470	1.156
129.0	17.54	13.29	5.210	1.518	8.839	19.45	23.72	19.33	8.676	1.176
132.0	16.22	12.19	4.616	1.498	8.019	18.05	21.98	17.91	7.878	1.196
135.0	14.90	10.20	4.127	1.482	7.260	16.60	20.25	16.43	7.129	1.246
138.0	13.52	8.667	3.881	1.447	6.551	14.96	18.38	14.82	6.405	1.251
141.0	12.41	7.856	3.529	1.446	5.903	13.37	16.49	13.17	5.757	1.266
144.0	11.10	6.644	3.223	1.445	5.294	11.60	14.59	11.52	5.179	1.282
147.0	9.599	5.586	2.931	1.444	4.601	10.09	12.61	9.975	4.526	1.302
150.0	6.786	4.727	2.559	1.442	3.957	8.731	10.73	8.642	3.897	1.312
153.0	6.498	4.034	2.283	1.457	3.404	7.550	9.156	7.457	3.325	1.324
156.0	5.782	3.542	2.111	1.462	3.017	6.470	7.750	6.361	2.934	1.332
159.0	4.984	3.014	1.941	1.468	2.680	5.364	6.469	5.280	2.587	1.357
162.0	4.005	2.491	1.790	1.478	2.363	4.218	5.205	4.145	2.276	1.382
165.0	3.089	2.055	1.654	1.488	2.092	3.315	3.781	3.254	1.999	1.404
168.0	2.299	1.784	1.608	1.498	1.925	2.662	2.910	2.625	1.829	1.407
171.0	1.654	1.603	1.578	1.500	1.845	2.125	1.803	2.122	1.764	1.422
174.0	1.558	1.523	1.533	1.501	1.804	1.859	1.588	1.870	1.724	1.447
177.0	1.498	1.493	1.493	1.503	1.719	1.799	1.558	1.804	1.648	1.467
180.0	1.462	1.513	1.498	1.503	1.568	1.568	1.478	1.578	1.553	1.493
G/C	300.0	330.0								
0.0	53.96	54.00								
3.0	53.74	53.77								
6.0	53.40	53.56								
9.0	52.98	53.36								
12.0	52.43	53.16								
15.0	51.80	52.67								
18.0	51.04	52.31								
21.0	50.09	51.67								
24.0	48.91	50.95								
27.0	47.80	50.12								
30.0	46.55	49.40								

C Range: 0 - 360DEG  
 C Interval: 30.0DEG  
 Test Speed: HIGH  
 Temperature: 25.3DEG  
 Operators: HXJ  
 Test Date: 2022-04-29

γ Range: 0 - 180DEG  
 γ Interval: 1.0DEG  
 Test System: EVERFINE GO-2000B\_V1 SYSTEM V2.0.269  
 Humidity: 65.0%  
 Test Distance: 9.200m [K=1.0000]  
 Remarks:

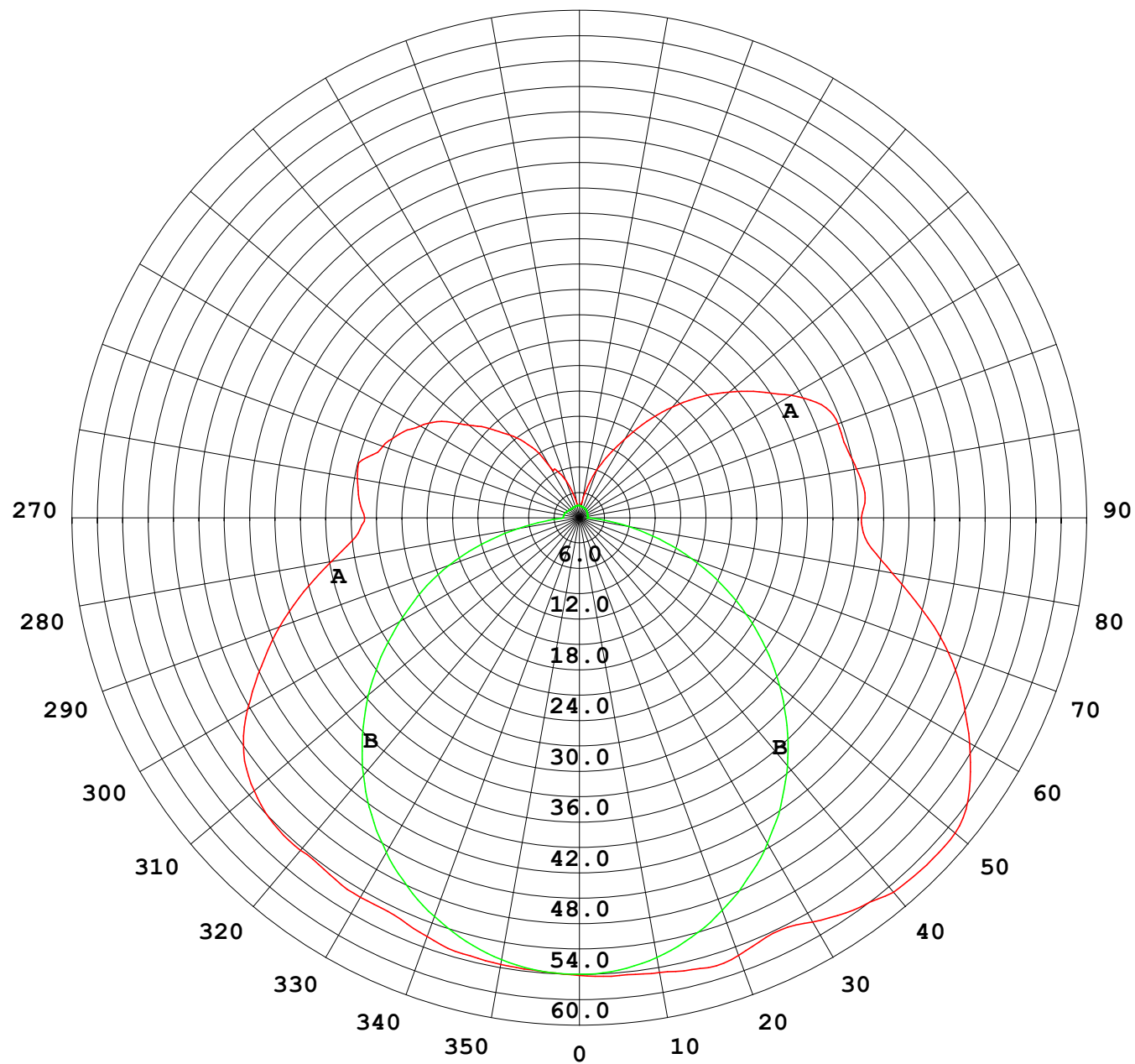
## Photometric Data Table [cd]

33.0	45.11	49.02
36.0	43.57	48.45
39.0	42.01	47.48
42.0	40.12	46.68
45.0	38.25	46.16
48.0	36.43	45.53
51.0	34.39	44.68
54.0	32.11	43.57
57.0	29.94	42.07
60.0	27.95	40.45
63.0	26.10	38.68
66.0	24.32	36.59
69.0	22.39	34.38
72.0	20.33	31.98
75.0	18.13	29.15
78.0	15.91	26.61
81.0	13.78	24.38
84.0	11.83	22.42
87.0	10.27	21.05
90.0	9.509	20.44
93.0	9.483	20.82
96.0	8.844	21.43
99.0	8.120	21.95
102.0	7.698	21.79
105.0	7.343	21.09
108.0	7.241	20.37
111.0	7.338	19.25
114.0	7.408	18.39
117.0	7.412	17.44
120.0	6.988	16.65
123.0	6.236	15.26
126.0	5.688	13.98
129.0	5.109	13.43
132.0	4.532	12.28
135.0	4.054	10.71
138.0	3.672	9.211
141.0	3.341	7.880
144.0	3.039	6.571
147.0	2.748	5.641
150.0	2.431	4.756
153.0	2.115	4.108
156.0	1.959	3.570
159.0	1.819	2.972
162.0	1.643	2.434
165.0	1.548	2.026
168.0	1.518	1.790
171.0	1.493	1.649
174.0	1.489	1.583
177.0	1.483	1.543
180.0	1.513	1.518

C Range: 0 - 360DEG  
 C Interval: 30.0DEG  
 Test Speed: HIGH  
 Temperature: 25.3DEG  
 Operators: HXJ  
 Test Date: 2022-04-29

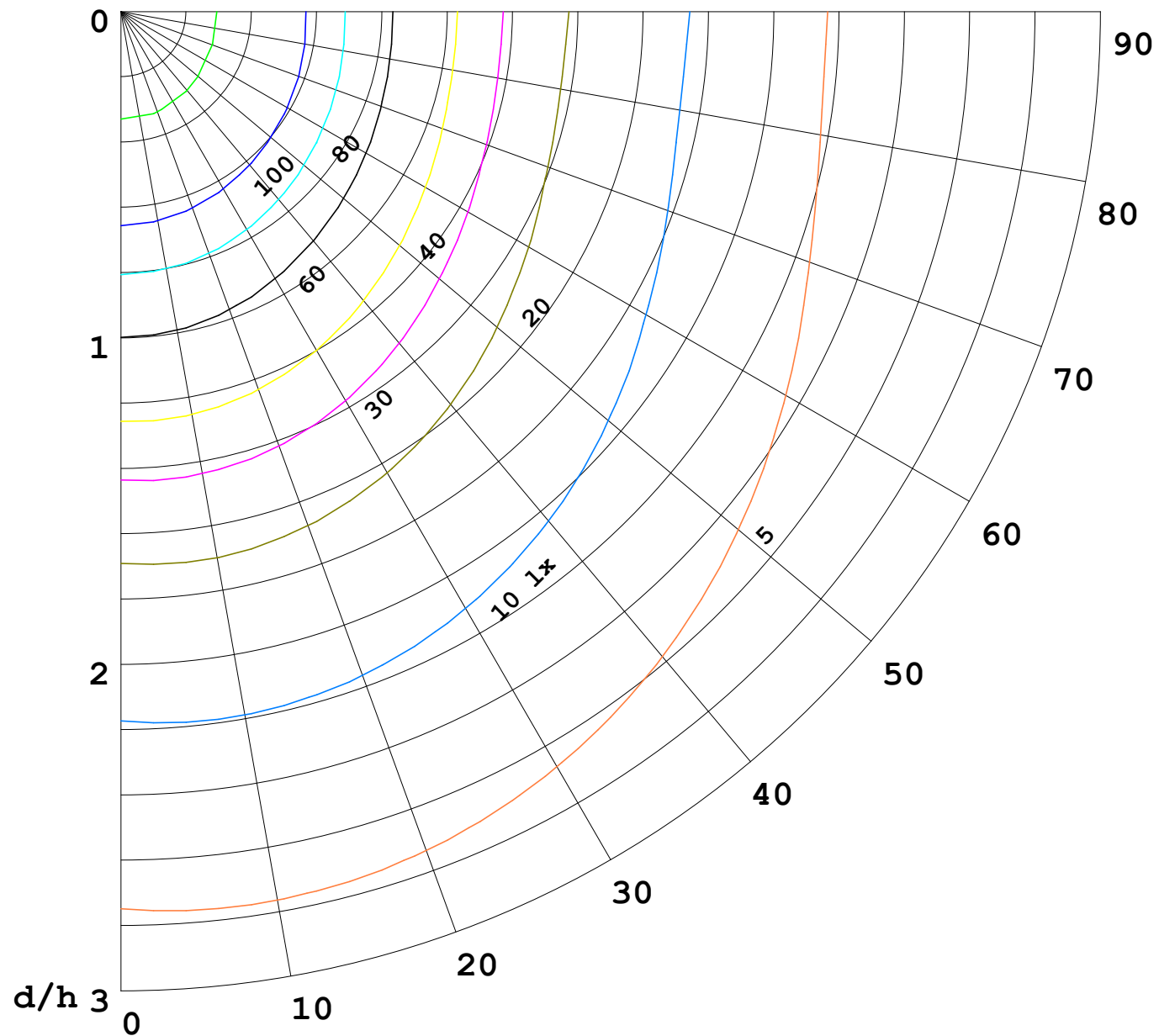
γ Range: 0 - 180DEG  
 γ Interval: 1.0DEG  
 Test System: EVERFINE GO-2000B\_V1 SYSTEM V2.0.269  
 Humidity: 65.0%  
 Test Distance: 9.200m [K=1.0000]  
 Remarks:

I (cd)



1000 lm

$\kappa = 1$



F = 5000 lm  
 K = 0.7  
 Hcc = 0.0 m  
 Hfc = 0.0 m  
 Eave = 100 lx

	Pcc	Pw	Pfc
—	70	50	30
—	50	30	20

