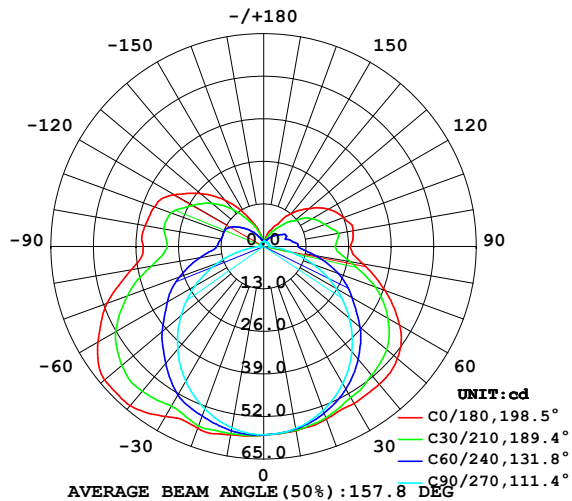


LUMINAIRE PHOTOMETRIC TEST REPORT

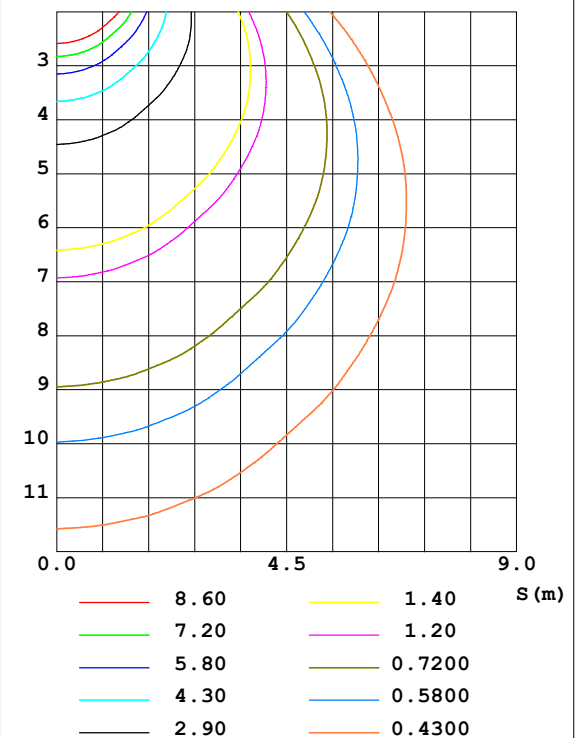
Test:U:24.00V I:0.2352A P:5.644W PF:1.000 Lamp Flux:323.34x1 lm		
NAME: SF18-24V-5050-70-SPI4-RGBW-4000-W	TYPE: 硅胶	WEIGHT:
DIM.: 16.5mm*16.5mm	SPEC.:	SERIAL No.:2022042901
MFR.: OLYMPIA	SUR.:1*0.0165	PROTECTION ANGLE:

DATA OF LAMP		PHOTOMETRIC DATA Eff: 57.29 lm/W			
MODEL	5050	I _{max} (cd)	63.65	S/MH (C0/180)	1.47
NOMINAL POWER (W)	4.5	LOR (%)	100.0	S/MH (C90/270)	1.25
RATED VOLTAGE (V)	24	TOTAL FLUX (lm)	323.34	η UP, DN (C0-180)	12.1, 36.9
NOMINAL FLUX (lm)	323.34	CIE CLASS	SEMI-D.	η UP, DN (C180-360)	13.1, 37.8
LAMPS INSIDE	1	η up (%)	25.3	CIBSE SHR NOM	1.50
TEST VOLTAGE (V)	24.0	η down (%)	74.7	CIBSE SHR MAX	1.55

LUMINOUS INTENSITY DISTRIBUTION DIAGRAM



C0 PLANE ISOLUX DIAGRAM (UNIT: lx)



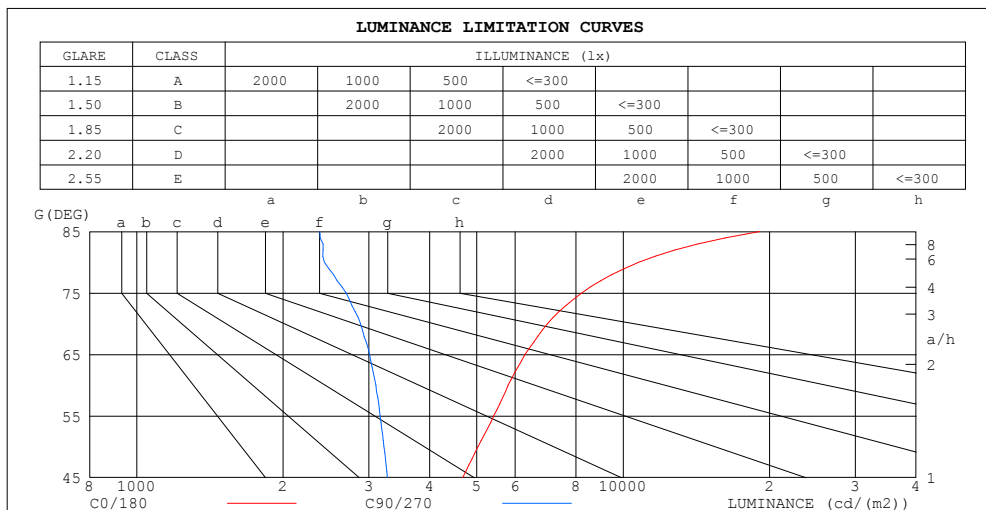
C Range: 0 - 360DEG
C Interval: 30.0DEG
Test Speed: HIGH
Temperature: 25.3DEG
Operators: HXJ
Test Date: 2022-04-29

γ Range: 0 - 180DEG
γ Interval: 1.0DEG
Test System: EVERFINE GO-2000B_V1 SYSTEM V2.0.269
Humidity: 65.0%
Test Distance: 9.200m [K=1.0000]
Remarks:

ZONAL FLUX DIAGRAM AND LUMINANCE LIMITATION CURVES

ZONAL FLUX DIAGRAM:

γ	C0	C45	C90	C135	C180	C225	C270	C315	γ	Φ zone	Φ total	%lum, lamp
10	57.17	56.84	56.46	57.68	58.44	57.63	56.29	56.61	0- 10	5.479	5.479	1.69,1.69
20	56.09	54.91	53.28	56.97	59.10	56.75	52.79	54.49	10- 20	15.99	21.47	6.64,6.64
30	55.36	51.77	48.39	54.71	60.00	54.42	47.62	51.19	20- 30	25.08	46.55	14.4,14.4
40	54.95	48.14	41.96	52.63	63.53	52.20	40.90	47.36	30- 40	32.42	78.97	24.4,24.4
50	53.31	43.76	34.17	48.97	63.42	48.56	33.01	42.81	40- 50	37.31	116.3	36,36
60	47.88	37.50	25.58	43.58	58.47	43.16	24.26	36.45	50- 60	38.54	154.8	47.9,47.9
70	39.43	30.31	16.28	36.26	50.97	35.91	15.04	29.36	60- 70	35.78	190.6	58.9,58.9
80	30.84	21.36	6.969	27.45	41.09	27.35	6.012	20.60	70- 80	29.20	219.8	68,68
90	26.48	16.23	1.684	21.90	36.77	21.89	1.030	15.52	80- 90	21.79	241.6	74.7,74.7
100	27.76	16.04	1.659	22.13	36.82	22.13	1.098	15.35	90-100	19.91	261.5	80.9,80.9
110	25.97	13.49	1.598	21.47	35.57	21.52	1.108	13.46	100-110	18.70	280.2	86.7,86.7
120	22.83	12.32	1.568	18.46	31.64	18.46	1.141	12.00	110-120	16.04	296.2	91.6,91.6
130	18.07	8.847	1.559	14.80	25.17	14.79	1.191	8.665	120-130	12.03	308.3	95.3,95.3
140	13.25	6.088	1.556	10.70	18.49	10.60	1.271	5.859	130-140	7.861	316.1	97.8,97.8
150	7.556	4.058	1.557	6.739	11.40	6.664	1.338	3.586	140-150	4.314	320.5	99.1,99.1
160	4.948	2.515	1.558	3.987	6.297	3.873	1.422	2.307	150-160	1.996	322.4	99.7,99.7
170	1.850	1.711	1.569	2.213	2.004	2.124	1.493	1.669	160-170	0.7257	323.2	99.9,99.9
180	1.548	1.568	1.578	1.638	1.578	1.626	1.568	1.601	170-180	0.1666	323.3	100,100
DEG	LUMINOUS INTENSITY:cd									UNIT:lm		



LUMINANCE cd/(m2)		
G (DEG)	C0/180	C90/270
85	19089	2379
80	10764	2432
75	8214	2696
70	6986	2886
65	6286	3008
60	5804	3100
55	5421	3164
50	5027	3222
45	4680	3274

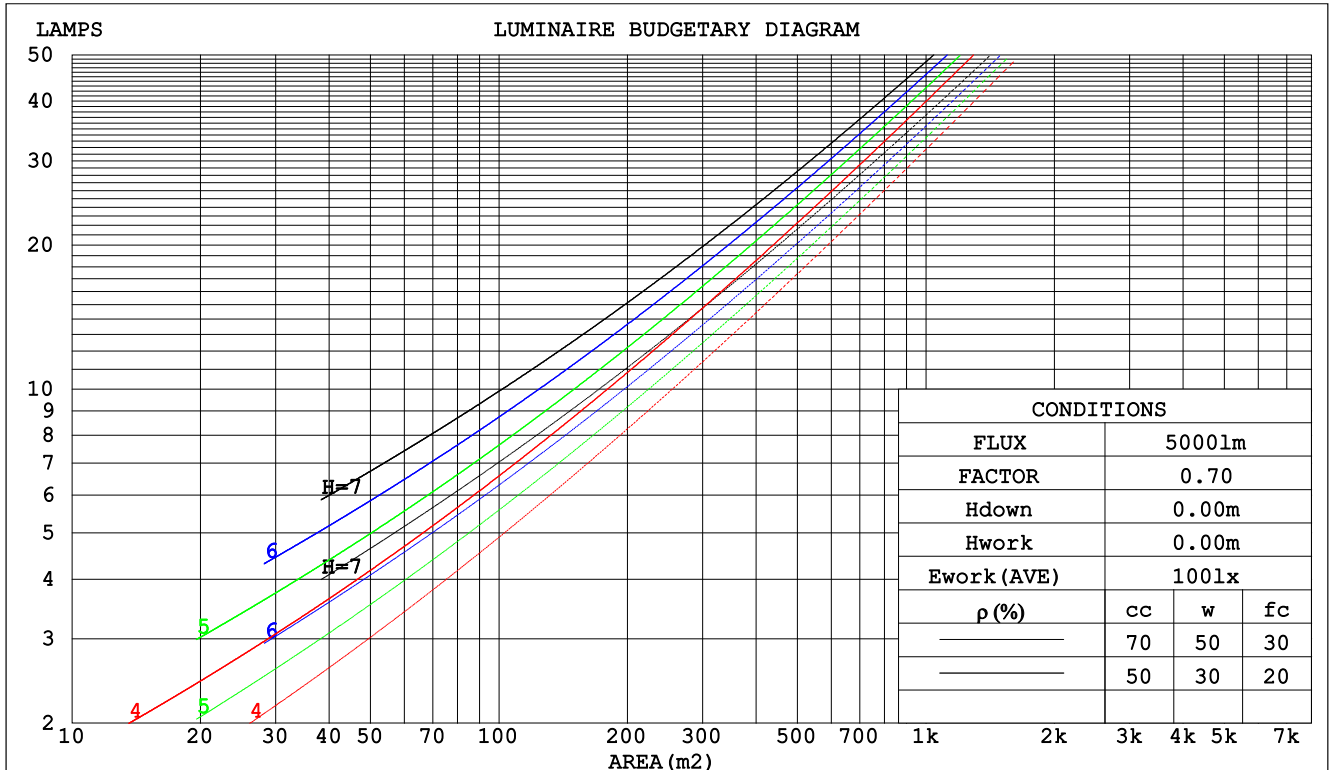
C Range: 0 - 360DEG
C Interval: 30.0DEG
Test Speed: HIGH
Temperature:25.3DEG
Operators:HXJ
Test Date:2022-04-29

γ Range: 0 - 180DEG
 γ Interval: 1.0DEG
Test System:EVERFINE GO-2000B_V1 SYSTEM V2.0.269
Humidity:65.0%
Test Distance:9.200m [K=1.0000]
Remarks:

CU AND LUMINAIRE BUDGETARY ESTIMATE DIAGRAM

Test:U:24.00V I:0.2352A P:5.644W PF:1.000 Lamp Flux:323.34x1 lm		
NAME: SF18-24V-5050-70-SPI4-RGBW-4000-W	TYPE: 硅胶	WEIGHT:
DIM.: 16.5mm*16.5mm	SPEC.:	SERIAL No.:2022042901
MFR.: OLYMPIA	SUR.:1*0.0165	PROTECTION ANGLE:

pcc	80%			70%			50%			30%			10%			0
pw	50%	30%	10%	50%	30%	10%	50%	30%	10%	50%	30%	10%	50%	30%	10%	0
pfc	20%			20%			20%			20%			20%			0
RCR	RCR:Room Cavity Ratio						Coefficients of Utilization(CU)									
0.0	1.13	1.13	1.13	1.07	1.07	1.07	.97	.97	.97	.88	.88	.88	.79	.79	.79	.75
1.0	.94	.89	.84	.89	.85	.80	.80	.77	.73	.72	.69	.67	.65	.62	.60	.56
2.0	.80	.73	.66	.76	.69	.63	.69	.63	.58	.62	.57	.53	.55	.51	.48	.45
3.0	.70	.61	.54	.66	.58	.51	.59	.53	.47	.53	.48	.43	.48	.43	.39	.36
4.0	.61	.52	.44	.58	.49	.43	.52	.45	.39	.47	.41	.36	.42	.37	.33	.30
5.0	.54	.44	.38	.51	.43	.36	.46	.39	.33	.42	.36	.31	.37	.32	.28	.25
6.0	.48	.39	.32	.46	.37	.31	.41	.34	.29	.37	.31	.27	.34	.28	.24	.22
7.0	.43	.34	.28	.41	.33	.27	.37	.30	.25	.34	.28	.23	.30	.25	.21	.19
8.0	.39	.31	.25	.37	.29	.24	.34	.27	.22	.31	.25	.21	.28	.23	.19	.17
9.0	.36	.27	.22	.34	.26	.21	.31	.24	.20	.28	.23	.18	.26	.21	.17	.15
10.0	.33	.25	.20	.31	.24	.19	.29	.22	.18	.26	.20	.16	.24	.19	.15	.13



C Range: 0 - 360DEG
C Interval: 30.0DEG
Test Speed: HIGH
Temperature:25.3DEG
Operators:HXJ
Test Date:2022-04-29

γ Range: 0 - 180DEG
γ Interval: 1.0DEG
Test System:EVERFINE GO-2000B_V1 SYSTEM V2.0.269
Humidity:65.0%
Test Distance:9.200m [K=1.0000]
Remarks:

WEC AND CCEC

Test:U:24.00V I:0.2352A P:5.644W PF:1.000 Lamp Flux:323.34x1 lm					
NAME: SF18-24V-5050-70-SPI4-RGBW-4000-W			TYPE: 硅胶		WEIGHT:
DIM.: 16.5mm*16.5mm			SPEC.:		SERIAL No.:2022042901
MFR.: OLYMPIA			SUR.:1*0.0165		PROTECTION ANGLE:

pcc	80%			70%			50%			30%			10%			0	
pw	50%	30%	10%	50%	30%	10%	50%	30%	10%	50%	30%	10%	50%	30%	10%	0	
pfc	20%			20%			20%			20%			20%			0	
RCR	RCR:Room Cavity Ratio						Wall Exitance Coefficients(WEC)										
0.0																	
1.0	.378	.215	.068	.363	.207	.066	.335	.192	.061	.310	.179	.057	.286	.166	.053		
2.0	.329	.180	.055	.316	.174	.054	.290	.161	.050	.267	.150	.047	.245	.139	.044		
3.0	.293	.156	.047	.281	.150	.045	.258	.140	.042	.237	.130	.040	.217	.120	.037		
4.0	.264	.137	.040	.253	.133	.039	.232	.123	.037	.213	.114	.034	.195	.106	.032		
5.0	.240	.123	.035	.230	.118	.034	.211	.110	.032	.193	.102	.030	.177	.094	.028		
6.0	.220	.110	.032	.211	.107	.031	.194	.099	.029	.177	.092	.027	.162	.085	.025		
7.0	.203	.101	.028	.195	.097	.028	.179	.090	.026	.164	.084	.024	.150	.078	.023		
8.0	.189	.092	.026	.181	.089	.025	.166	.083	.024	.152	.077	.022	.139	.071	.021		
9.0	.176	.085	.024	.169	.082	.023	.155	.077	.022	.142	.071	.020	.130	.066	.019		
10.0	.164	.079	.022	.158	.076	.021	.145	.071	.020	.133	.066	.019	.122	.061	.018		

pcc	80%			70%			50%			30%			10%			0
pw	50%	30%	10%	50%	30%	10%	50%	30%	10%	50%	30%	10%	50%	30%	10%	0
pfc	20%			20%			20%			20%			20%			0
RCR	RCR:Room Cavity Ratio						Ceiling Cavity Exitance Coefficients(CCEC)									
0.0	.383	.383	.383	.327	.327	.327	.223	.223	.223	.128	.128	.128	.041	.041	.041	
1.0	.379	.350	.323	.324	.300	.278	.222	.207	.192	.128	.119	.112	.041	.038	.036	
2.0	.373	.327	.289	.319	.282	.250	.219	.195	.174	.126	.113	.102	.040	.037	.033	
3.0	.366	.311	.268	.313	.268	.232	.215	.186	.163	.124	.109	.096	.040	.035	.031	
4.0	.358	.299	.253	.307	.258	.220	.211	.180	.155	.122	.105	.092	.039	.034	.030	
5.0	.351	.289	.244	.301	.250	.212	.207	.175	.150	.120	.103	.089	.039	.033	.029	
6.0	.343	.281	.237	.295	.244	.206	.204	.171	.146	.118	.100	.087	.038	.033	.029	
7.0	.336	.275	.232	.289	.238	.202	.200	.167	.143	.116	.098	.085	.038	.032	.028	
8.0	.330	.269	.228	.284	.234	.199	.196	.164	.141	.114	.097	.084	.037	.032	.028	
9.0	.324	.265	.225	.279	.230	.196	.193	.161	.139	.112	.095	.083	.036	.031	.028	
10.0	.318	.261	.223	.274	.226	.194	.190	.159	.138	.111	.094	.082	.036	.031	.027	

C Range: 0 - 360DEG
C Interval: 30.0DEG
Test Speed: HIGH
Temperature:25.3DEG
Operators:HXJ
Test Date:2022-04-29

γ Range: 0 - 180DEG
γ Interval: 1.0DEG
Test System:EVERFINE GO-2000B_V1 SYSTEM V2.0.269
Humidity:65.0%
Test Distance:9.200m [K=1.0000]
Remarks:

Uncorrected UGR Table

Test:U:24.00V I:0.2352A P:5.644W PF:1.000 Lamp Flux:323.34x1 lm										
NAME: SF18-24V-5050-70-SPI4-RGBW-4000-W						TYPE:硅胶		WEIGHT:		
DIM.: 16.5mm*16.5mm						SPEC.:		SERIAL No.:2022042901		
MFR.: OLYMPIA						SUR.:1*0.0165		PROTECTION ANGLE:		
ceiling/cavity	0.7	0.7	0.5	0.5	0.3	0.7	0.7	0.5	0.5	0.3
walls	0.5	0.3	0.5	0.3	0.3	0.5	0.3	0.5	0.3	0.3
working plane	0.2	0.2	0.2	0.2	0.2	0.2	0.2	0.2	0.2	0.2
Room dimensions	Viewed crosswise					Viewed endwise				
x = 2H y = 2H	17.6	18.9	18.2	19.5	20.2	14.9	16.2	15.5	16.8	17.5
	20.1	21.3	20.7	21.9	22.7	16.5	17.7	17.1	18.3	19.1
	21.4	22.5	22.0	23.2	23.9	17.1	18.3	17.8	18.9	19.7
	22.8	23.9	23.5	24.5	25.3	17.6	18.7	18.3	19.3	20.1
	23.6	24.6	24.2	25.3	26.1	17.8	18.8	18.5	19.5	20.3
	24.5	25.4	25.1	26.1	27.0	17.9	18.9	18.6	19.6	20.4
4H	18.1	19.2	18.7	19.8	20.6	16.1	17.2	16.8	17.9	18.7
	20.8	21.8	21.5	22.5	23.3	17.9	18.9	18.6	19.6	20.4
	22.3	23.2	23.0	23.9	24.8	18.7	19.6	19.5	20.4	21.2
	23.9	24.7	24.7	25.5	26.3	19.4	20.2	20.1	20.9	21.8
	24.8	25.6	25.6	26.3	27.2	19.6	20.4	20.4	21.1	22.0
	25.8	26.5	26.6	27.3	28.2	19.8	20.5	20.6	21.3	22.2
8H	22.6	23.3	23.3	24.1	25.0	19.7	20.5	20.5	21.2	22.1
	24.5	25.1	25.3	25.9	26.8	20.7	21.3	21.5	22.1	23.0
	25.6	26.1	26.4	26.9	27.9	21.1	21.7	21.9	22.5	23.4
	26.9	27.4	27.7	28.2	29.1	21.5	22.0	22.3	22.8	23.7
12H	22.6	23.3	23.4	24.0	25.0	20.0	20.7	20.8	21.5	22.4
	24.6	25.1	25.4	25.9	26.9	21.2	21.7	22.0	22.5	23.5
	25.8	26.3	26.6	27.1	28.0	21.7	22.2	22.5	23.0	24.0
Variations with the observer position at spacings:										
S = 1.0H	+ 0.1 / - 0.1					+ 0.1 / - 0.1				
1.5H	+ 0.2 / - 0.3					+ 0.2 / - 0.3				
2.0H	+ 0.2 / - 0.3					+ 0.2 / - 0.4				

CIE Pub.117 Corrected 323.3 lm Total Lamp Luminous Flux. (8log(F/F0) = -3.9)

C Range: 0 - 360DEG
C Interval: 30.0DEG
Test Speed: HIGH
Temperature:25.3DEG
Operators:HXJ
Test Date:2022-04-29

γ Range: 0 - 180DEG
γ Interval: 1.0DEG
Test System:EVERFINE GO-2000B_V1 SYSTEM V2.0.269
Humidity:65.0%
Test Distance:9.200m [K=1.0000]
Remarks:

UTILIZATION FACTORS TABLE

Test:U:24.00V I:0.2352A P:5.644W PF:1.000 Lamp Flux:323.34x1 lm		
NAME: SF18-24V-5050-70-SPI4-RGBW-4000-W	TYPE: 硅胶	WEIGHT:
DIM.: 16.5mm*16.5mm	SPEC.:	SERIAL No.:2022042901
MFR.: OLYMPIA	SUR.:1*0.0165	PROTECTION ANGLE:

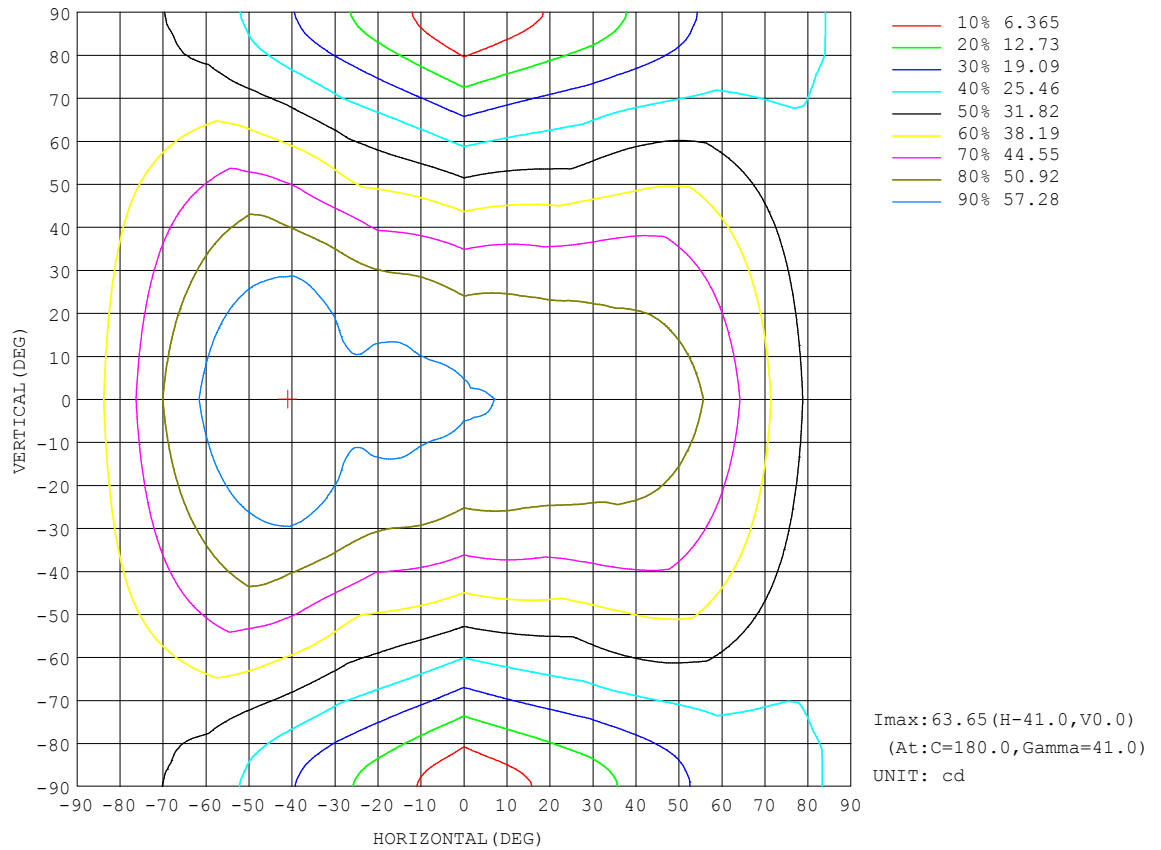
REFLECTANCE										
Ceiling	0.8	0.8	0.8	0.7	0.7	0.7	0.5	0.5	0.5	0
Walls	0.7	0.5	0.3	0.7	0.5	0.3	0.7	0.5	0.3	0
Working plane	0.2	0.2	0.2	0.2	0.2	0.2	0.2	0.2	0.2	0
ROOM INDEX	UTILIZATION FACTORS (PERCENT) $k(RI) \times RCR = 5$									
$k = 0.60$	45	32	25	44	32	25	41	31	24	17
0.80	54	41	33	52	40	32	49	38	31	23
1.00	62	49	40	60	47	39	55	47	38	29
1.25	69	56	47	66	54	46	61	51	44	34
1.50	74	62	53	71	60	52	65	56	49	37
2.00	82	70	62	78	68	60	71	63	56	43
2.50	86	76	68	82	73	66	75	67	61	47
3.00	90	81	73	86	77	71	78	71	66	50
4.00	95	87	80	90	83	77	82	76	71	55
5.00	98	91	85	93	87	82	84	80	75	58
ROOM INDEX	UF(total)									Direct
According to DIN EN 13032-2 2004			Suspended					SHRNOM = 1.25		

C Range: 0 - 360DEG
C Interval: 30.0DEG
Test Speed: HIGH
Temperature:25.3DEG
Operators:HXJ
Test Date:2022-04-29

γ Range: 0 - 180DEG
 γ Interval: 1.0DEG
Test System:EVERFINE GO-2000B_V1 SYSTEM V2.0.269
Humidity:65.0%
Test Distance:9.200m [K=1.0000]
Remarks:

ISOCANDELA DIAGRAM

Test:U:24.00V I:0.2352A P:5.644W PF:1.000 Lamp Flux:323.34x1 lm		
NAME: SF18-24V-5050-70-SPI4-RGBW-4000-W	TYPE: 硅胶	WEIGHT:
DIM.: 16.5mm*16.5mm	SPEC.:	SERIAL No.:2022042901
MFR.: OLYMPIA	SUR.:1*0.0165	PROTECTION ANGLE:

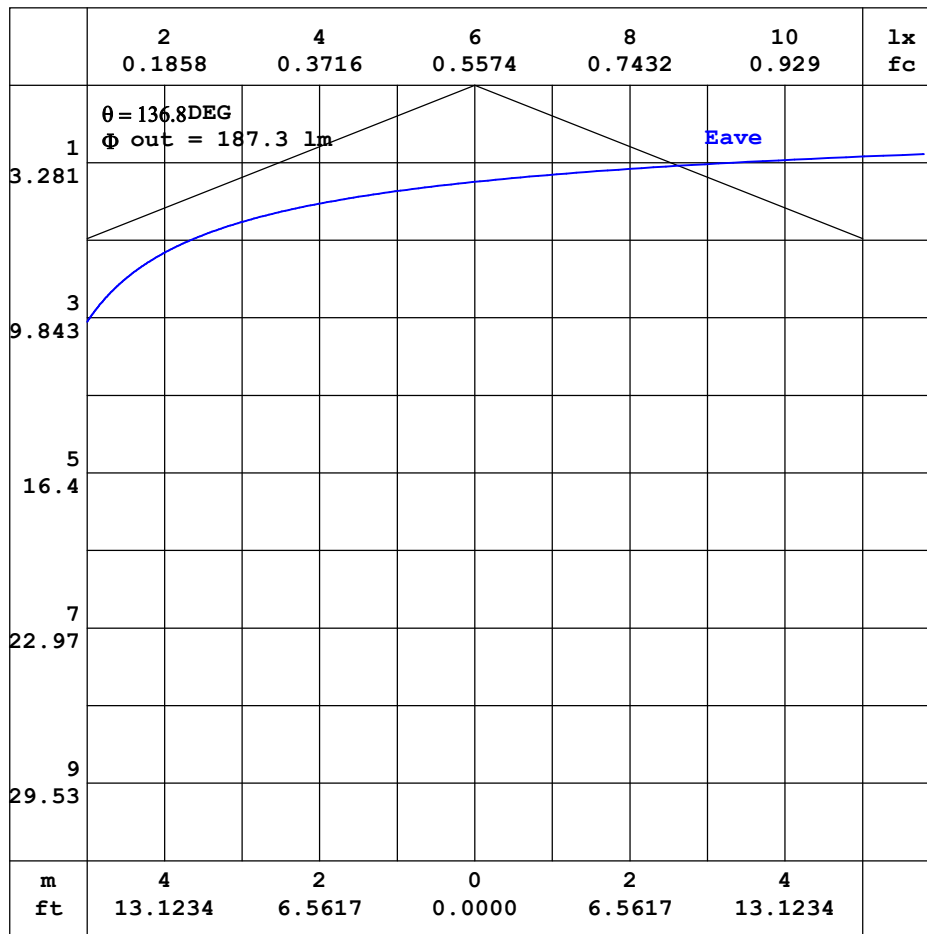


C Range: 0 - 360DEG
C Interval: 30.0DEG
Test Speed: HIGH
Temperature: 25.3DEG
Operators: HXJ
Test Date: 2022-04-29

γ Range: 0 - 180DEG
 γ Interval: 1.0DEG
Test System: EVERFINE GO-2000B_V1 SYSTEM V2.0.269
Humidity: 65.0%
Test Distance: 9.200m [K=1.0000]
Remarks:

AAI CURVES

Test:U:24.00V I:0.2352A P:5.644W PF:1.000 Lamp Flux:323.34x1 lm		
NAME: SF18-24V-5050-70-SPI4-RGBW-4000-W	TYPE: 硅胶	WEIGHT:
DIM.: 16.5mm*16.5mm	SPEC.:	SERIAL No.:2022042901
MFR.: OLYMPIA	SUR.:1*0.0165	PROTECTION ANGLE:



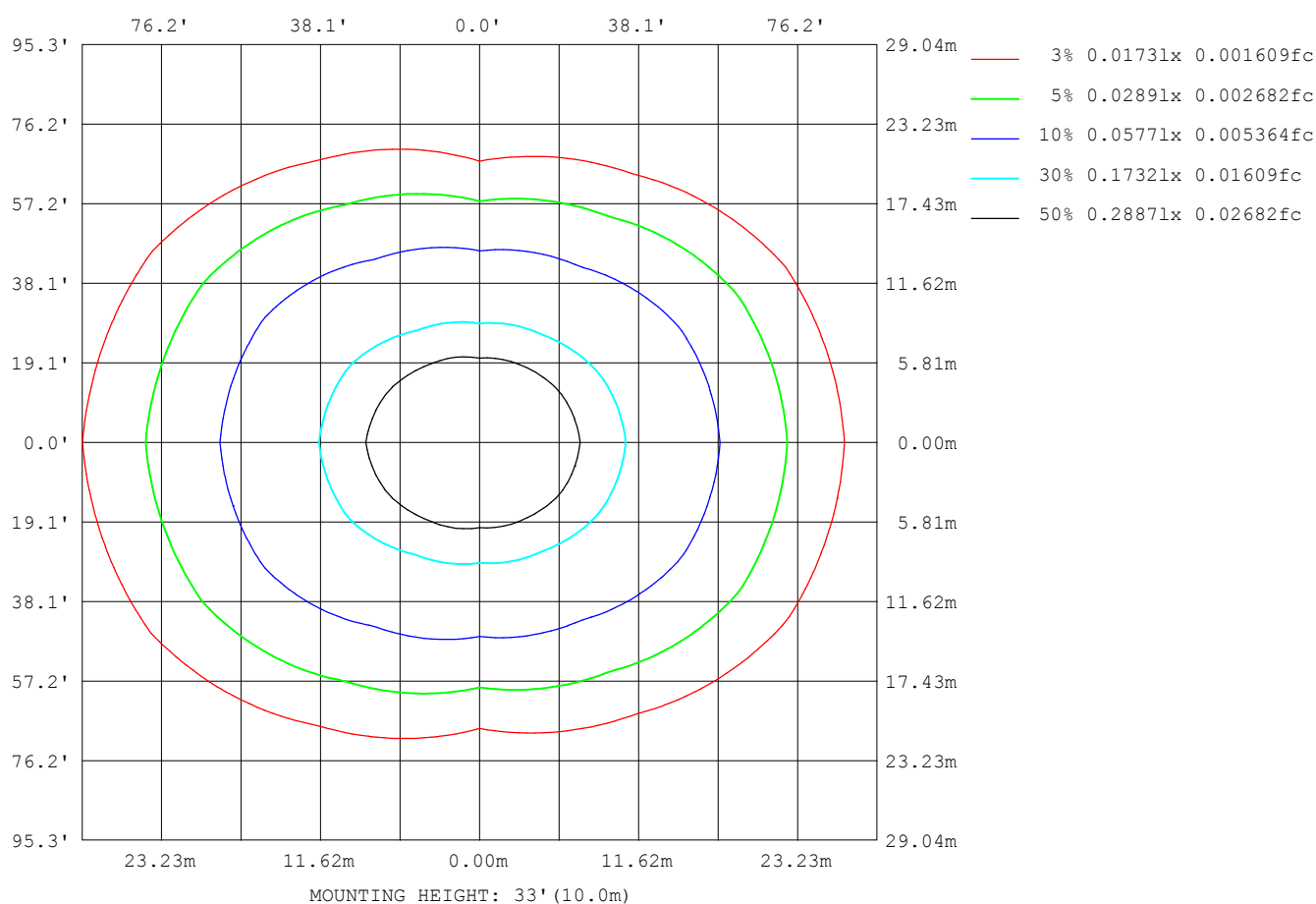
Note: The Curves indicate the illuminated area and the average illumination when the luminaire is at different distance.

C Range: 0 - 360DEG
 C Interval: 30.0DEG
 Test Speed: HIGH
 Temperature: 25.3DEG
 Operators: HXJ
 Test Date: 2022-04-29

γ Range: 0 - 180DEG
 γ Interval: 1.0DEG
 Test System: EVERFINE GO-2000B_V1 SYSTEM V2.0.269
 Humidity: 65.0%
 Test Distance: 9.200m [K=1.0000]
 Remarks:

ISOLUX DIAGRAM

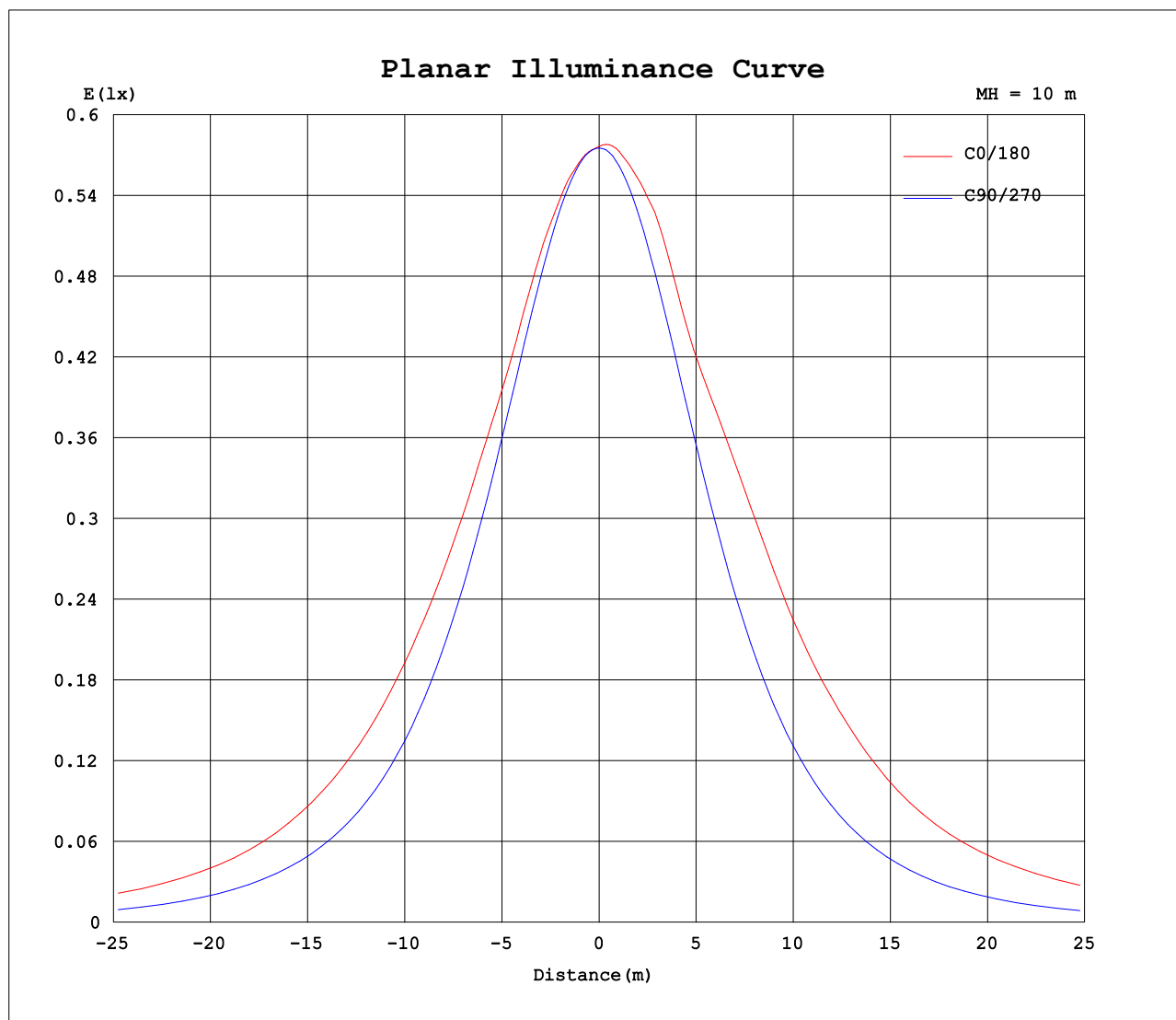
Test:U:24.00V I:0.2352A P:5.644W PF:1.000 Lamp Flux:323.34x1 lm		
NAME: SF18-24V-5050-70-SPI4-RGBW-4000-W	TYPE: 硅胶	WEIGHT:
DIM.: 16.5mm*16.5mm	SPEC.:	SERIAL No.:2022042901
MFR.: OLYMPIA	SUR.:1*0.0165	PROTECTION ANGLE:



C Range: 0 - 360DEG
C Interval: 30.0DEG
Test Speed: HIGH
Temperature:25.3DEG
Operators:HXJ
Test Date:2022-04-29

γ Range: 0 - 180DEG
 γ Interval: 1.0DEG
Test System:EVERFINE GO-2000B_V1 SYSTEM V2.0.269
Humidity:65.0%
Test Distance:9.200m [K=1.0000]
Remarks:

Planar Illuminance Curve



C Range: 0 - 360DEG
C Interval: 30.0DEG
Test Speed: HIGH
Temperature: 25.3DEG
Operators: HXJ
Test Date: 2022-04-29

γ Range: 0 - 180DEG
 γ Interval: 1.0DEG
Test System: EVERFINE GO-2000B_V1 SYSTEM V2.0.269
Humidity: 65.0%
Test Distance: 9.200m [K=1.0000]
Remarks:

LUMINOUS DISTRIBUTION INTENSITY DATA

Test:U:24.00V I:0.2352A P:5.644W PF:1.000 Lamp Flux:323.34x1 lm		
NAME: SF18-24V-5050-70-SPI4-RGBW-4000-W	TYPE: 硅胶	WEIGHT:
DIM.: 16.5mm*16.5mm	SPEC.:	SERIAL No.:2022042901
MFR.: OLYMPIA	SUR.:1*0.0165	PROTECTION ANGLE:

Table--1

UNIT: cd

C (DEG) γ (DEG)	0	30	60	90	120	150	180	210	240	270	300	330						
0	57.7	57.6	57.6	57.5	57.5	57.6	57.7	57.6	57.6	57.5	57.5	57.6						
5	57.4	57.4	57.3	57.3	57.6	58.0	58.2	58.0	57.6	57.2	57.1	57.2						
10	57.2	57.0	56.6	56.5	57.3	58.0	58.4	58.1	57.2	56.3	56.4	56.8						
15	56.8	56.4	55.6	55.1	56.4	58.3	59.2	58.2	56.2	54.8	55.3	56.1						
20	56.1	55.7	54.2	53.3	55.5	58.5	59.1	58.4	55.1	52.8	53.7	55.3						
25	55.3	54.5	52.4	51.0	54.5	57.3	58.5	57.1	54.0	50.4	51.8	54.0						
30	55.4	53.3	50.3	48.4	52.8	56.6	60.0	56.4	52.5	47.6	49.6	52.7						
35	55.1	52.6	47.8	45.3	50.1	57.4	62.2	57.2	49.7	44.4	47.0	52.0						
40	55.0	51.3	44.9	42.0	47.1	58.1	63.5	57.8	46.6	40.9	44.1	50.6						
45	54.6	50.4	41.9	38.2	44.2	58.1	63.6	57.9	43.6	37.1	40.9	49.5						
50	53.3	49.0	38.5	34.2	41.0	56.9	63.4	56.6	40.5	33.0	37.5	48.1						
55	51.3	46.9	34.6	29.9	37.6	55.0	61.8	54.7	37.0	28.7	33.5	45.8						
60	47.9	43.8	31.2	25.6	34.6	52.6	58.5	52.3	34.0	24.3	30.0	42.9						
65	43.8	40.4	28.0	21.0	31.6	48.9	54.8	48.6	31.1	19.7	26.8	39.5						
70	39.4	36.4	24.3	16.3	27.8	44.7	51.0	44.4	27.4	15.0	23.2	35.5						
75	35.1	31.3	20.2	11.5	23.9	40.1	45.8	40.0	23.6	10.4	19.3	30.5						
80	30.8	26.7	16.0	6.97	19.9	35.0	41.1	34.9	19.8	6.01	15.2	26.0						
85	27.5	23.2	12.3	3.42	16.2	31.0	37.5	31.1	16.2	2.50	11.6	22.6						
90	26.5	21.9	10.6	1.68	14.5	29.3	36.8	29.5	14.3	1.03	9.73	21.3						
95	27.4	22.6	10.4	1.68	14.0	29.9	37.4	30.0	13.8	1.09	9.41	22.1						
100	27.8	23.1	8.95	1.66	13.4	30.9	36.8	31.0	13.3	1.10	8.05	22.6						
105	27.4	21.4	8.12	1.65	13.0	30.8	36.2	30.9	13.0	1.10	7.44	21.4						
110	26.0	19.9	7.07	1.60	12.9	30.0	35.6	30.1	13.0	1.11	7.28	19.6						
115	24.7	18.5	7.71	1.57	12.8	27.6	34.5	27.7	12.7	1.11	7.26	18.5						
120	22.8	17.1	7.59	1.57	11.8	25.1	31.6	25.1	11.8	1.14	6.97	17.0						
125	20.7	15.3	6.33	1.56	10.6	22.9	28.3	22.9	10.6	1.17	5.80	14.8						
130	18.1	12.3	5.43	1.56	9.11	20.5	25.2	20.5	9.07	1.19	4.88	12.4						
135	15.7	10.6	4.72	1.55	7.73	17.8	22.0	17.8	7.66	1.24	4.16	10.7						
140	13.2	8.20	3.97	1.56	6.50	14.9	18.5	14.8	6.36	1.27	3.45	8.27						
145	10.4	6.59	3.37	1.56	5.34	11.8	15.0	11.7	5.25	1.31	2.94	6.15						
150	7.56	5.34	2.78	1.56	4.17	9.31	11.4	9.24	4.09	1.34	2.42	4.76						
155	5.90	4.12	2.33	1.56	3.31	7.23	8.46	7.12	3.23	1.39	2.00	3.87						
160	4.95	3.05	1.98	1.56	2.71	5.26	6.30	5.15	2.60	1.42	1.78	2.83						
165	3.29	2.21	1.73	1.57	2.20	3.50	3.92	3.41	2.08	1.47	1.64	2.05						
170	1.85	1.76	1.66	1.57	1.99	2.44	2.00	2.37	1.87	1.49	1.58	1.76						
175	1.61	1.58	1.59	1.58	1.91	1.96	1.66	1.96	1.81	1.52	1.57	1.65						
180	1.55	1.58	1.56	1.58	1.63	1.64	1.58	1.64	1.61	1.57	1.58	1.62						

C Range: 0 - 360DEG
C Interval: 30.0DEG
Test Speed: HIGH
Temperature:25.3DEG
Operators:HXJ
Test Date:2022-04-29

γ Range: 0 - 180DEG
γ Interval: 1.0DEG
Test System:EVERFINE GO-2000B_V1 SYSTEM V2.0.269
Humidity:65.0%
Test Distance:9.200m [K=1.0000]
Remarks:

Photometric Data Table [cd]

G/C	0.0	30.0	60.0	90.0	120.0	150.0	180.0	210.0	240.0	270.0
0.0	57.66	57.63	57.63	57.53	57.52	57.57	57.66	57.63	57.63	57.53
3.0	57.48	57.44	57.42	57.45	57.67	57.86	58.01	57.90	57.68	57.44
6.0	57.34	57.30	57.19	57.17	57.58	57.99	58.20	58.00	57.58	57.09
9.0	57.27	57.08	56.80	56.67	57.45	58.02	58.36	58.05	57.31	56.53
12.0	56.94	56.82	56.27	55.99	57.01	58.09	58.72	58.10	56.85	55.74
15.0	56.82	56.39	55.63	55.11	56.44	58.32	59.20	58.18	56.23	54.76
18.0	56.44	56.08	54.82	54.06	55.82	58.60	59.41	58.48	55.56	53.63
21.0	55.97	55.46	53.81	52.89	55.28	58.27	58.94	58.16	54.93	52.37
24.0	55.41	54.77	52.79	51.52	54.69	57.53	58.53	57.38	54.27	50.90
27.0	55.23	53.93	51.63	50.02	53.95	56.79	58.84	56.62	53.54	49.34
30.0	55.36	53.26	50.29	48.39	52.82	56.61	60.00	56.38	52.45	47.62
33.0	55.21	52.98	48.82	46.61	51.25	57.04	61.29	56.79	50.86	45.72
36.0	55.09	52.40	47.28	44.70	49.51	57.52	62.44	57.28	49.12	43.74
39.0	54.98	51.56	45.53	42.67	47.75	58.01	63.32	57.70	47.25	41.63
42.0	54.90	50.99	43.72	40.50	45.93	58.24	63.65	57.95	45.36	39.39
45.0	54.61	50.35	41.89	38.20	44.17	58.13	63.56	57.88	43.58	37.10
48.0	53.93	49.64	39.88	35.85	42.37	57.49	63.50	57.15	41.84	34.67
51.0	53.01	48.69	37.69	33.36	40.34	56.62	63.27	56.24	39.82	32.18
54.0	51.84	47.39	35.31	30.83	38.24	55.46	62.30	55.15	37.69	29.63
57.0	50.14	45.70	33.21	28.27	36.27	54.17	60.51	53.85	35.72	27.01
60.0	47.88	43.83	31.17	25.58	34.60	52.57	58.47	52.28	34.05	24.26
63.0	45.51	41.85	29.30	22.82	32.84	50.41	56.23	50.04	32.37	21.56
66.0	43.00	39.68	27.28	20.07	30.86	48.02	54.12	47.71	30.40	18.81
69.0	40.36	37.24	25.05	17.20	28.60	45.51	51.85	45.29	28.17	15.97
72.0	37.65	34.31	22.71	14.32	26.26	43.01	48.96	42.69	25.87	13.17
75.0	35.08	31.29	20.18	11.51	23.88	40.11	45.83	39.98	23.60	10.38
78.0	32.48	28.43	17.64	8.707	21.50	36.95	42.87	36.93	21.36	7.662
81.0	30.05	25.94	15.19	6.226	19.08	34.10	40.24	34.07	19.02	5.223
84.0	27.96	23.80	12.96	4.110	16.87	31.69	38.03	31.70	16.82	3.117
87.0	27.00	22.38	11.30	2.350	15.24	30.12	36.98	30.30	15.10	1.592
90.0	26.48	21.89	10.57	1.684	14.52	29.28	36.77	29.48	14.30	1.030
93.0	27.11	22.27	10.49	1.719	14.20	29.53	37.31	29.69	14.02	1.080
96.0	27.52	22.72	10.09	1.679	13.90	30.02	37.32	30.20	13.76	1.090
99.0	27.69	23.20	9.140	1.664	13.51	30.69	36.96	30.83	13.42	1.096
102.0	27.84	22.69	8.621	1.658	13.22	30.98	36.52	31.04	13.13	1.100
105.0	27.40	21.37	8.118	1.652	13.03	30.82	36.17	30.91	13.03	1.104
108.0	26.39	20.53	7.146	1.633	12.97	30.37	35.87	30.46	12.99	1.107
111.0	25.75	19.61	7.245	1.593	12.93	29.71	35.38	29.80	12.96	1.109
114.0	24.97	18.79	7.708	1.578	12.89	28.16	34.81	28.28	12.87	1.112
117.0	23.95	18.04	7.639	1.571	12.44	26.41	33.56	26.55	12.40	1.115
120.0	22.83	17.05	7.594	1.568	11.82	25.10	31.64	25.12	11.79	1.141
123.0	21.58	16.08	6.803	1.565	11.14	23.81	29.55	23.88	11.12	1.166
126.0	20.18	14.76	6.153	1.563	10.29	22.42	27.74	22.49	10.24	1.166
129.0	18.62	12.74	5.580	1.560	9.402	21.01	25.81	20.99	9.364	1.186
132.0	17.10	11.75	5.128	1.557	8.532	19.47	23.88	19.42	8.486	1.221
135.0	15.71	10.60	4.721	1.555	7.733	17.81	21.96	17.75	7.656	1.239
138.0	14.15	9.332	4.248	1.555	6.948	16.08	19.86	16.01	6.847	1.256
141.0	12.74	7.848	3.856	1.556	6.275	14.27	17.81	14.17	6.139	1.281
144.0	11.09	6.888	3.474	1.556	5.606	12.42	15.74	12.35	5.501	1.312
147.0	8.198	5.929	3.172	1.556	4.857	10.75	13.57	10.67	4.777	1.326
150.0	7.556	5.335	2.781	1.557	4.169	9.309	11.40	9.236	4.093	1.338
153.0	6.624	4.561	2.454	1.557	3.591	8.032	9.527	7.940	3.506	1.362
156.0	5.542	3.934	2.257	1.557	3.183	6.862	7.971	6.743	3.084	1.397
159.0	5.193	3.285	2.051	1.558	2.831	5.681	6.670	5.582	2.713	1.412
162.0	4.251	2.667	1.855	1.560	2.499	4.449	5.380	4.361	2.391	1.437
165.0	3.291	2.210	1.729	1.568	2.197	3.501	3.917	3.405	2.080	1.467
168.0	2.455	1.899	1.699	1.568	2.046	2.813	2.991	2.771	1.930	1.488
171.0	1.770	1.708	1.639	1.571	1.975	2.230	1.894	2.203	1.874	1.498
174.0	1.639	1.613	1.603	1.574	1.935	1.985	1.683	1.986	1.839	1.518
177.0	1.583	1.568	1.573	1.578	1.840	1.909	1.648	1.915	1.754	1.523
180.0	1.548	1.578	1.558	1.578	1.633	1.643	1.578	1.638	1.613	1.568
G/C	300.0	330.0								
0.0	57.52	57.57								
3.0	57.28	57.34								
6.0	56.98	57.16								
9.0	56.56	56.91								
12.0	55.98	56.57								
15.0	55.26	56.06								
18.0	54.44	55.72								
21.0	53.35	55.03								
24.0	52.21	54.30								
27.0	51.02	53.43								
30.0	49.63	52.75								

C Range: 0 - 360DEG
 C Interval: 30.0DEG
 Test Speed: HIGH
 Temperature: 25.3DEG
 Operators: HXJ
 Test Date: 2022-04-29

γ Range: 0 - 180DEG
 γ Interval: 1.0DEG
 Test System: EVERFINE GO-2000B_V1 SYSTEM V2.0.269
 Humidity: 65.0%
 Test Distance: 9.200m [K=1.0000]
 Remarks:

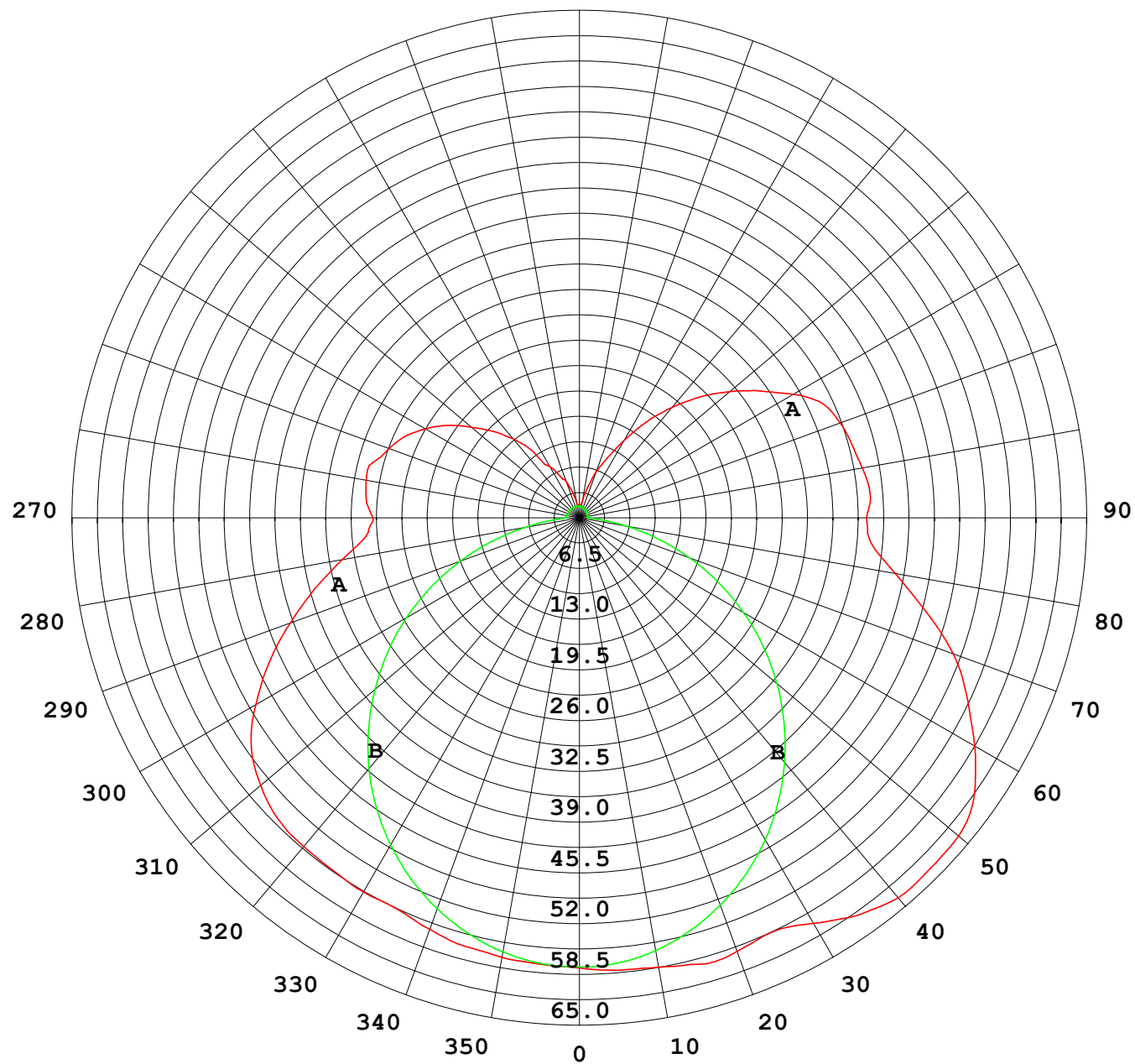
Photometric Data Table [cd]

33.0	48.13	52.44
36.0	46.51	51.72
39.0	44.79	50.82
42.0	42.83	50.17
45.0	40.88	49.55
48.0	38.91	48.78
51.0	36.69	47.75
54.0	34.30	46.40
57.0	32.09	44.67
60.0	30.01	42.89
63.0	28.05	40.98
66.0	26.15	38.73
69.0	23.97	36.32
72.0	21.65	33.56
75.0	19.25	30.51
78.0	16.82	27.69
81.0	14.40	25.21
84.0	12.18	23.13
87.0	10.50	21.85
90.0	9.730	21.31
93.0	9.754	21.76
96.0	9.145	22.29
99.0	8.280	22.68
102.0	7.678	22.36
105.0	7.437	21.44
108.0	7.172	20.61
111.0	7.438	19.28
114.0	7.312	18.85
117.0	7.247	18.09
120.0	6.968	17.04
123.0	6.280	15.66
126.0	5.456	14.46
129.0	5.039	12.78
132.0	4.567	11.99
135.0	4.165	10.70
138.0	3.722	9.342
141.0	3.346	7.799
144.0	3.040	6.507
147.0	2.758	5.585
150.0	2.416	4.757
153.0	2.110	4.133
156.0	1.965	3.730
159.0	1.819	3.063
162.0	1.678	2.454
165.0	1.643	2.052
168.0	1.593	1.840
171.0	1.575	1.724
174.0	1.568	1.664
177.0	1.563	1.623
180.0	1.583	1.618

C Range: 0 - 360DEG
 C Interval: 30.0DEG
 Test Speed: HIGH
 Temperature: 25.3DEG
 Operators: HXJ
 Test Date: 2022-04-29

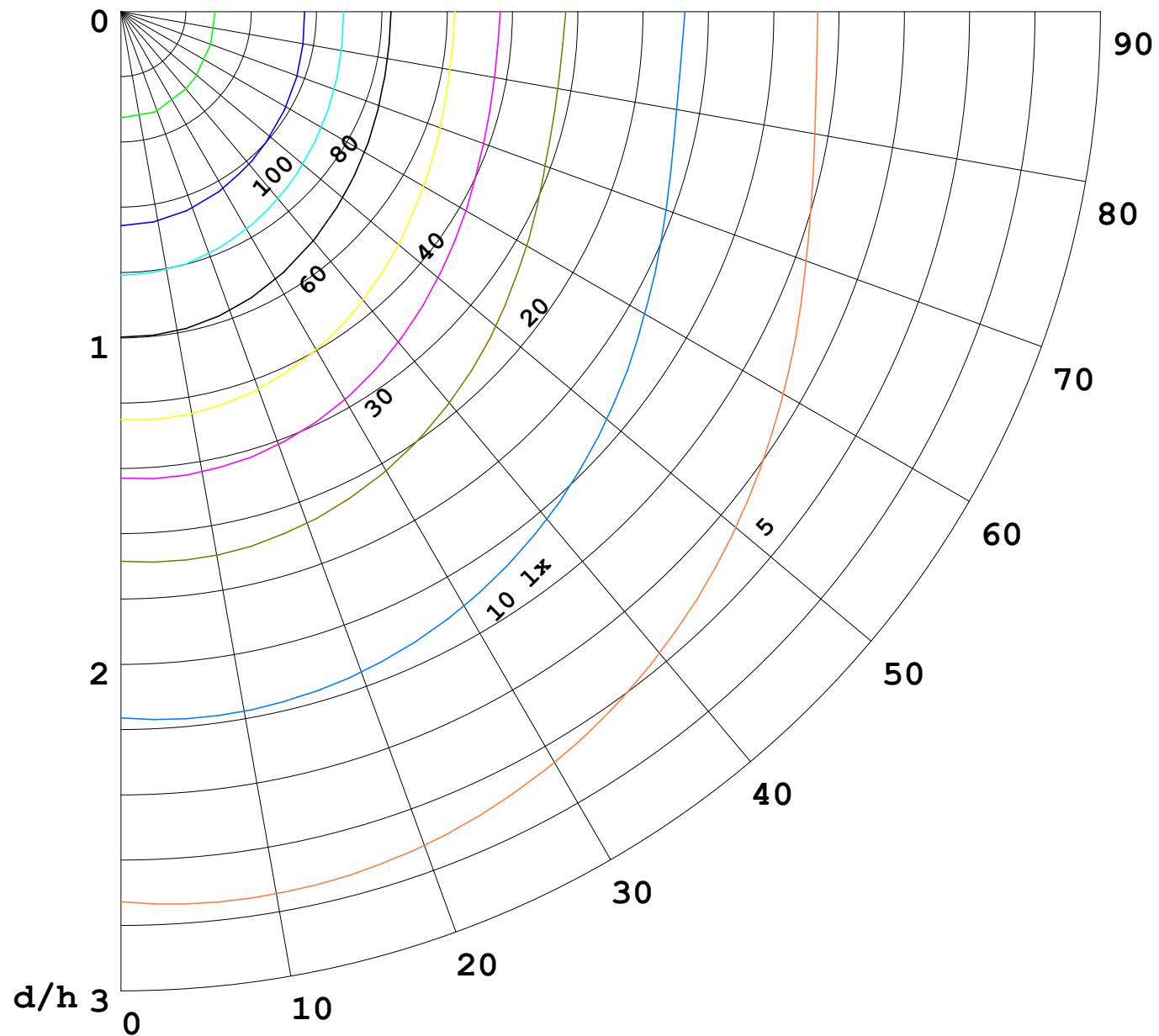
γ Range: 0 - 180DEG
 γ Interval: 1.0DEG
 Test System: EVERFINE GO-2000B_V1 SYSTEM V2.0.269
 Humidity: 65.0%
 Test Distance: 9.200m [K=1.0000]
 Remarks:

I (cd)



1000 lm

$\kappa = 1$



F = 5000 lm
 K = 0.7
 Hcc = 0.0 m
 Hfc = 0.0 m
 Eave = 100 lx

	Pcc	Pw	Pfc
—	70	50	30
—	50	30	20

