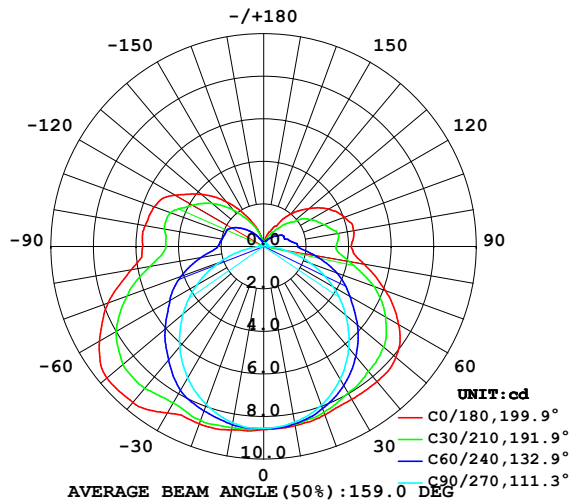


## LUMINAIRE PHOTOMETRIC TEST REPORT

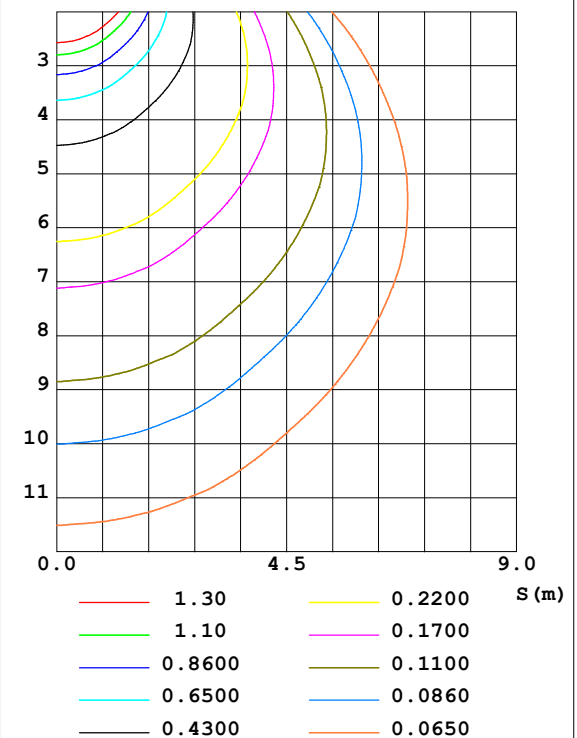
Test:U:24.00V I:0.2373A P:5.695W PF:1.000 Lamp Flux:48.798x1 lm		
NAME: SF18-24V-5050-70-SPI4-RGBW-4000-B	TYPE: 硅胶	WEIGHT:
DIM.: 16.5mm*16.5mm	SPEC.:	SERIAL No.:2022042901
MFR.: OLYMPIA	SUR.:1*0.0165	PROTECTION ANGLE:

DATA OF LAMP		PHOTOMETRIC DATA				Eff: 8.57 lm/W
MODEL	5050	I <sub>max</sub> (cd)	9.639	S/MH (C0/180)	1.49	
NOMINAL POWER (W)	4.5	LOR (%)	100.0	S/MH (C90/270)	1.25	
RATED VOLTAGE (V)	24	TOTAL FLUX (lm)	48.796	η UP, DN (C0-180)	12.1, 36.8	
NOMINAL FLUX (lm)	48.798	CIE CLASS	SEMI-D.	η UP, DN (C180-360)	13.2, 37.9	
LAMPS INSIDE	1	η up (%)	25.2	CIBSE SHR NOM	1.50	
TEST VOLTAGE (V)	24.0	η down (%)	74.8	CIBSE SHR MAX	1.55	

LUMINOUS INTENSITY DISTRIBUTION DIAGRAM



C0 PLANE ISOLUX DIAGRAM (UNIT:lx)



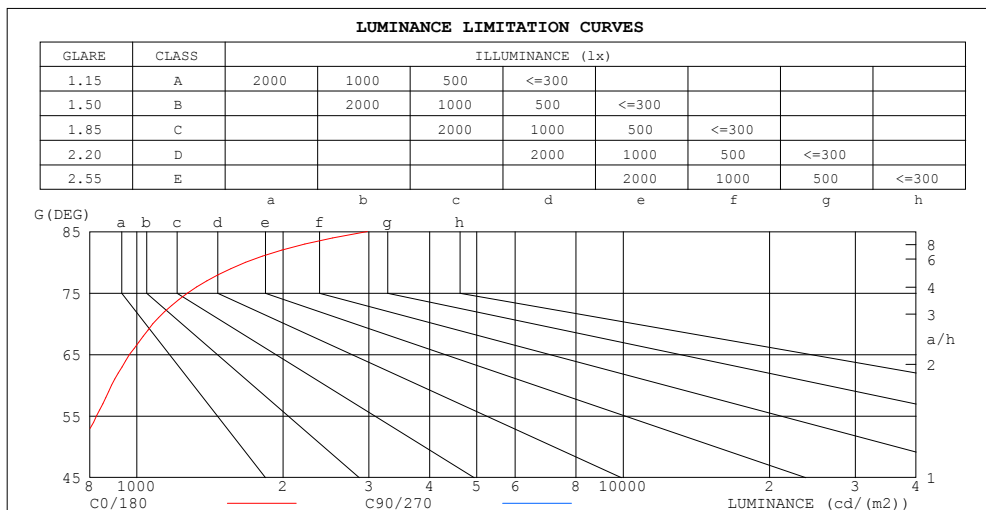
C Range: 0 - 360DEG  
C Interval: 30.0DEG  
Test Speed: HIGH  
Temperature:25.3DEG  
Operators:HXJ  
Test Date:2022-04-29

γ Range: 0 - 180DEG  
γ Interval: 1.0DEG  
Test System:EVERFINE GO-2000B\_V1 SYSTEM V2.0.269  
Humidity:65.0%  
Test Distance:9.200m [K=1.0000]  
Remarks:

ZONAL FLUX DIAGRAM  
AND LUMINANCE LIMITATION CURVES

## ZONAL FLUX DIAGRAM:

$\gamma$	C0	C45	C90	C135	C180	C225	C270	C315	$\gamma$	$\Phi$ zone	$\Phi$ total	%lum, lamp
10	8.559	8.481	8.398	8.618	8.755	8.580	8.418	8.453	0- 10	0.8170	0.8170	1.67,1.67
20	8.418	8.202	7.935	8.529	8.872	8.465	7.906	8.144	10- 20	2.390	3.207	6.57,6.57
30	8.299	7.748	7.201	8.228	9.042	8.166	7.137	7.667	20- 30	3.757	6.964	14.3,14.3
40	8.292	7.205	6.231	7.934	9.571	7.832	6.147	7.108	30- 40	4.864	11.83	24.2,24.2
50	8.112	6.564	5.045	7.376	9.624	7.345	4.952	6.445	40- 50	5.611	17.44	35.7,35.7
60	7.324	5.649	3.763	6.576	8.919	6.553	3.640	5.513	50- 60	5.816	23.26	47.7,47.7
70	6.093	4.596	2.376	5.501	7.788	5.485	2.243	4.478	60- 70	5.428	28.68	58.8,58.8
80	4.796	3.257	0.9789	4.189	6.321	4.209	0.8905	3.166	70- 80	4.457	33.14	67.9,67.9
90	4.121	2.508	0.1759	3.362	5.689	3.378	0.1748	2.421	80- 90	3.344	36.48	74.8,74.8
100	4.292	2.435	0.1759	3.358	5.659	3.364	0.1599	2.330	90-100	3.047	39.53	81,81
110	4.041	2.033	0.1759	3.260	5.478	3.289	0.1476	2.069	100-110	2.854	42.39	86.9,86.9
120	3.529	1.792	0.1759	2.789	4.834	2.810	0.1357	1.812	110-120	2.430	44.82	91.8,91.8
130	2.765	1.289	0.1759	2.219	3.813	2.232	0.1357	1.292	120-130	1.809	46.62	95.5,95.5
140	2.011	0.8693	0.1759	1.583	2.763	1.573	0.1357	0.8472	130-140	1.167	47.79	97.9,97.9
150	1.126	0.5528	0.1759	0.9648	1.672	0.9550	0.1357	0.4826	140-150	0.6234	48.41	99.2,99.2
160	0.7089	0.3166	0.1759	0.5325	0.8685	0.5178	0.1357	0.2815	150-160	0.2742	48.69	99.8,99.8
170	0.2313	0.1885	0.1759	0.2637	0.1959	0.2592	0.1357	0.1725	160-170	0.0896	48.78	100,100
180	0.1709	0.1734	0.1759	0.1885	0.1759	0.1860	0.1357	0.1583	170-180	0.0184	48.80	100,100
DEG	LUMINOUS INTENSITY:cd									UNIT:lm		



LUMINANCE cd/(m2)		
G (DEG)	C0/180	C90/270
85	2978	296
80	1674	342
75	1274	388
70	1080	421
65	967	441
60	888	456
55	826	467
50	765	476
45	710	485

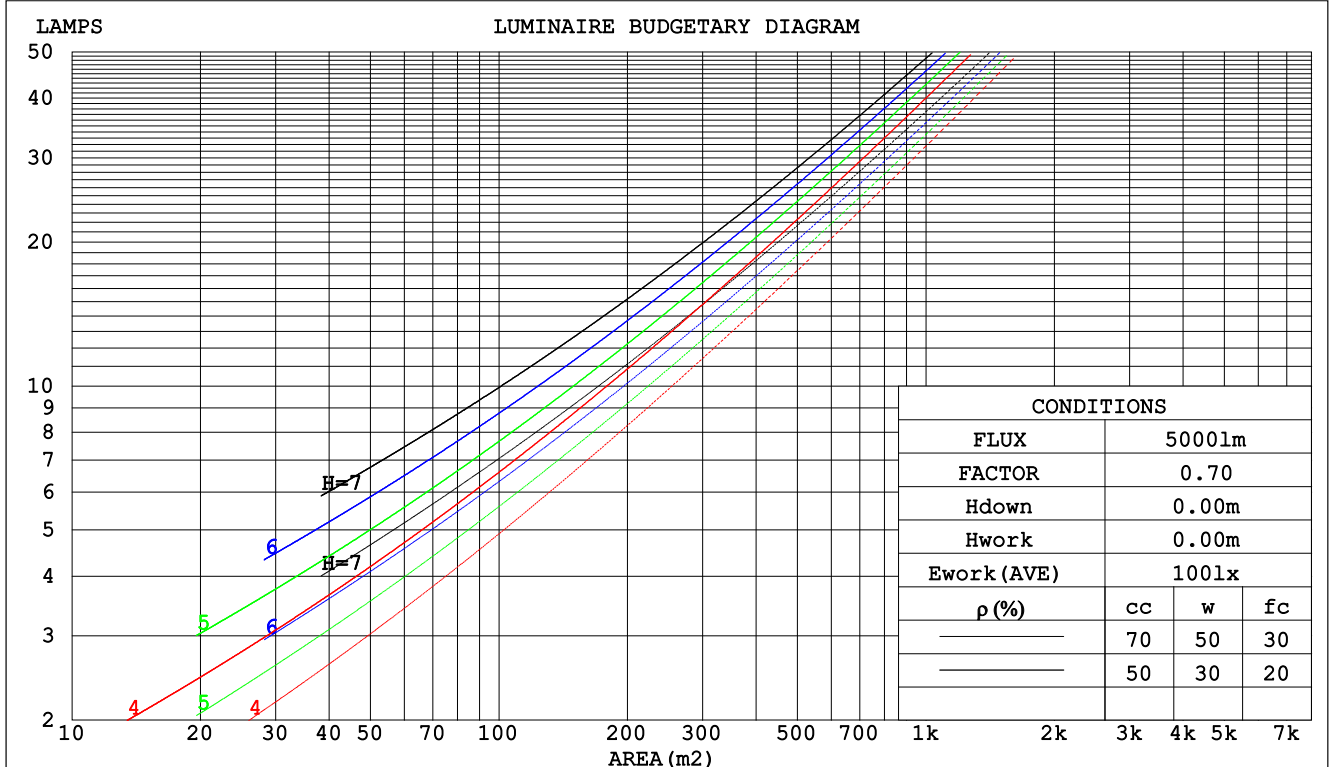
C Range: 0 - 360DEG  
C Interval: 30.0DEG  
Test Speed: HIGH  
Temperature:25.3DEG  
Operators:HXJ  
Test Date:2022-04-29

$\gamma$  Range: 0 - 180DEG  
 $\gamma$  Interval: 1.0DEG  
Test System:EVERFINE GO-2000B\_V1 SYSTEM V2.0.269  
Humidity:65.0%  
Test Distance:9.200m [K=1.0000]  
Remarks:

## CU AND LUMINAIRE BUDGETARY ESTIMATE DIAGRAM

Test:U:24.00V I:0.2373A P:5.695W PF:1.000 Lamp Flux:48.798x1 lm		
NAME: SF18-24V-5050-70-SPI4-RGBW-4000-B	TYPE: 硅胶	WEIGHT:
DIM.: 16.5mm*16.5mm	SPEC.:	SERIAL No.:2022042901
MFR.: OLYMPIA	SUR.:1*0.0165	PROTECTION ANGLE:

pcc	80%			70%			50%			30%			10%			0
p <sub>w</sub>	50%	30%	10%	50%	30%	10%	50%	30%	10%	50%	30%	10%	50%	30%	10%	0
p <sub>fc</sub>	20%			20%			20%			20%			20%			0
RCR	RCR:Room Cavity Ratio			Coefficients of Utilization(CU)												
0.0	1.13	1.13	1.13	1.07	1.07	1.07	.97	.97	.97	.88	.88	.88	.79	.79	.79	.75
1.0	.94	.89	.84	.89	.85	.80	.80	.77	.73	.72	.69	.66	.65	.62	.60	.56
2.0	.80	.73	.66	.76	.69	.63	.69	.63	.58	.61	.57	.53	.55	.51	.48	.44
3.0	.69	.61	.53	.66	.58	.51	.59	.53	.47	.53	.48	.43	.47	.43	.39	.36
4.0	.61	.51	.44	.58	.49	.43	.52	.45	.39	.47	.41	.36	.42	.37	.33	.30
5.0	.54	.44	.37	.51	.42	.36	.46	.39	.33	.42	.35	.31	.37	.32	.28	.25
6.0	.48	.39	.32	.46	.37	.31	.41	.34	.29	.37	.31	.26	.33	.28	.24	.22
7.0	.43	.34	.28	.41	.33	.27	.37	.30	.25	.34	.28	.23	.30	.25	.21	.19
8.0	.39	.30	.25	.37	.29	.24	.34	.27	.22	.31	.25	.20	.28	.23	.19	.17
9.0	.36	.27	.22	.34	.26	.21	.31	.24	.20	.28	.22	.18	.26	.21	.17	.15
10.0	.33	.25	.19	.31	.24	.19	.29	.22	.18	.26	.20	.16	.24	.19	.15	.13



C Range: 0 - 360DEG  
C Interval: 30.0DEG  
Test Speed: HIGH  
Temperature:25.3DEG  
Operators:HXJ  
Test Date:2022-04-29

γ Range: 0 - 180DEG  
γ Interval: 1.0DEG  
Test System:EVERFINE GO-2000B\_V1 SYSTEM V2.0.269  
Humidity:65.0%  
Test Distance:9.200m [K=1.0000]  
Remarks:

## WEC AND CCEC

Test:U:24.00V I:0.2373A P:5.695W PF:1.000 Lamp Flux:48.798x1 lm		
NAME: SF18-24V-5050-70-SPI4-RGBW-4000-B	TYPE: 硅胶	WEIGHT:
DIM.: 16.5mm*16.5mm	SPEC.:	SERIAL No.:2022042901
MFR.: OLYMPIA	SUR.:1*0.0165	PROTECTION ANGLE:

pcc	80%			70%			50%			30%			10%			0	
pw	50%	30%	10%	50%	30%	10%	50%	30%	10%	50%	30%	10%	50%	30%	10%	0	
pfc	20%			20%			20%			20%			20%			0	
RCR	RCR:Room Cavity Ratio						Wall Exitance Coefficients(WEC)										
0.0																	
1.0	.380	.216	.068	.365	.208	.066	.337	.193	.062	.312	.180	.058	.288	.167	.054		
2.0	.330	.181	.056	.317	.175	.054	.292	.162	.050	.268	.151	.047	.247	.140	.044		
3.0	.294	.157	.047	.282	.151	.045	.259	.140	.043	.238	.130	.040	.218	.121	.037		
4.0	.265	.138	.040	.254	.133	.039	.233	.124	.037	.213	.115	.035	.195	.106	.032		
5.0	.241	.123	.036	.231	.119	.035	.212	.110	.032	.194	.102	.030	.177	.095	.028		
6.0	.221	.111	.032	.212	.107	.031	.194	.099	.029	.178	.092	.027	.162	.086	.025		
7.0	.204	.101	.029	.195	.097	.028	.179	.091	.026	.164	.084	.024	.150	.078	.023		
8.0	.189	.092	.026	.181	.089	.025	.166	.083	.024	.152	.077	.022	.139	.071	.021		
9.0	.176	.085	.024	.169	.082	.023	.155	.077	.022	.142	.071	.020	.130	.066	.019		
10.0	.165	.079	.022	.158	.076	.021	.145	.071	.020	.133	.066	.019	.122	.061	.018		

pcc	80%			70%			50%			30%			10%			0
pw	50%	30%	10%	50%	30%	10%	50%	30%	10%	50%	30%	10%	50%	30%	10%	0
pfc	20%			20%			20%			20%			20%			0
RCR	RCR:Room Cavity Ratio						Ceiling Cavity Exitance Coefficients(CCEC)									
0.0	.383	.383	.383	.327	.327	.327	.223	.223	.223	.128	.128	.128	.041	.041	.041	
1.0	.379	.349	.323	.324	.300	.278	.222	.206	.192	.128	.119	.112	.041	.038	.036	
2.0	.373	.327	.288	.319	.281	.249	.219	.195	.174	.126	.113	.102	.040	.037	.033	
3.0	.365	.311	.267	.313	.268	.232	.215	.186	.162	.124	.109	.096	.040	.035	.031	
4.0	.358	.298	.253	.307	.258	.220	.211	.180	.155	.122	.105	.092	.039	.034	.030	
5.0	.350	.289	.243	.301	.250	.212	.207	.175	.149	.120	.102	.089	.039	.033	.029	
6.0	.343	.281	.236	.295	.243	.206	.203	.170	.146	.118	.100	.087	.038	.033	.029	
7.0	.336	.274	.231	.289	.238	.202	.200	.167	.143	.116	.098	.085	.037	.032	.028	
8.0	.329	.269	.228	.284	.233	.198	.196	.164	.141	.114	.097	.084	.037	.032	.028	
9.0	.323	.264	.225	.278	.229	.196	.193	.161	.139	.112	.095	.083	.036	.031	.027	
10.0	.317	.260	.222	.274	.226	.194	.190	.159	.138	.111	.094	.082	.036	.031	.027	

C Range: 0 - 360DEG  
C Interval: 30.0DEG  
Test Speed: HIGH  
Temperature:25.3DEG  
Operators:HXJ  
Test Date:2022-04-29

γ Range: 0 - 180DEG  
γ Interval: 1.0DEG  
Test System:EVERFINE GO-2000B\_V1 SYSTEM V2.0.269  
Humidity:65.0%  
Test Distance:9.200m [K=1.0000]  
Remarks:

### Uncorrected UGR Table

Test:U:24.00V I:0.2373A P:5.695W PF:1.000 Lamp Flux:48.798x1 lm											
NAME: SF18-24V-5050-70-SPI4-RGBW-4000-B					TYPE:硅胶			WEIGHT:			
DIM.: 16.5mm*16.5mm					SPEC.:			SERIAL No.:2022042901			
MFR.: OLYMPIA					SUR.:1*0.0165			PROTECTION ANGLE:			
ceiling/cavity	0.7	0.7	0.5	0.5	0.3	0.7	0.7	0.5	0.5	0.3	
walls	0.5	0.3	0.5	0.3	0.3	0.5	0.3	0.5	0.3	0.3	
working plane	0.2	0.2	0.2	0.2	0.2	0.2	0.2	0.2	0.2	0.2	
Room dimensions	Viewed crosswise					Viewed endwise					
x = 2H y = 2H	11H	11.0	12.3	11.6	12.9	13.6	8.2	9.5	8.8	10.1	10.8
	3H	13.6	14.8	14.2	15.4	16.2	9.8	11.0	10.5	11.7	12.4
	4H	14.9	16.1	15.6	16.7	17.5	10.5	11.6	11.1	12.2	13.0
	6H	16.4	17.4	17.0	18.1	18.9	10.9	12.0	11.6	12.6	13.4
	8H	17.1	18.2	17.8	18.8	19.6	11.0	12.1	11.7	12.8	13.6
	12H	18.1	19.0	18.7	19.7	20.5	11.1	12.1	11.8	12.8	13.6
4H	2H	11.5	12.6	12.2	13.3	14.1	9.5	10.6	10.1	11.3	12.0
	3H	14.3	15.3	15.0	16.0	16.8	11.3	12.3	12.0	13.0	13.8
	4H	15.9	16.8	16.6	17.5	18.3	12.1	13.0	12.8	13.7	14.6
	6H	17.5	18.3	18.2	19.0	19.9	12.7	13.5	13.5	14.3	15.2
	8H	18.4	19.1	19.1	19.9	20.8	13.0	13.7	13.7	14.5	15.3
	12H	19.4	20.1	20.2	20.9	21.8	13.1	13.8	13.9	14.6	15.5
8H	4H	16.1	16.9	16.9	17.6	18.5	13.1	13.9	13.9	14.6	15.5
	6H	18.0	18.7	18.8	19.4	20.4	14.1	14.7	14.9	15.5	16.4
	8H	19.1	19.7	19.9	20.5	21.4	14.5	15.0	15.3	15.8	16.8
	12H	20.4	20.9	21.3	21.8	22.7	14.8	15.3	15.6	16.1	17.1
12H	4H	16.1	16.8	16.9	17.6	18.5	13.4	14.1	14.2	14.9	15.8
	6H	18.1	18.7	18.9	19.5	20.4	14.6	15.1	15.4	15.9	16.9
	8H	19.3	19.8	20.1	20.6	21.6	15.1	15.6	15.9	16.4	17.4
Variations with the observer position at spacings:											
S = 1.0H	+ 0.1 / - 0.1					+ 0.1 / - 0.1					
1.5H	+ 0.2 / - 0.2					+ 0.2 / - 0.3					
2.0H	+ 0.2 / - 0.3					+ 0.2 / - 0.4					

CIE Pub.117 Corrected 48.80 lm Total Lamp Luminous Flux. (8log(F/F0) = -10.5)

C Range: 0 - 360DEG  
C Interval: 30.0DEG  
Test Speed: HIGH  
Temperature:25.3DEG  
Operators:HXJ  
Test Date:2022-04-29

γ Range: 0 - 180DEG  
γ Interval: 1.0DEG  
Test System:EVERFINE GO-2000B\_V1 SYSTEM V2.0.269  
Humidity:65.0%  
Test Distance:9.200m [K=1.0000]  
Remarks:

## UTILIZATION FACTORS TABLE

Test:U:24.00V I:0.2373A P:5.695W PF:1.000 Lamp Flux:48.798x1 lm		
NAME: SF18-24V-5050-70-SPI4-RGBW-4000-B	TYPE: 硅胶	WEIGHT:
DIM.: 16.5mm*16.5mm	SPEC.:	SERIAL No.:2022042901
MFR.: OLYMPIA	SUR.:1*0.0165	PROTECTION ANGLE:

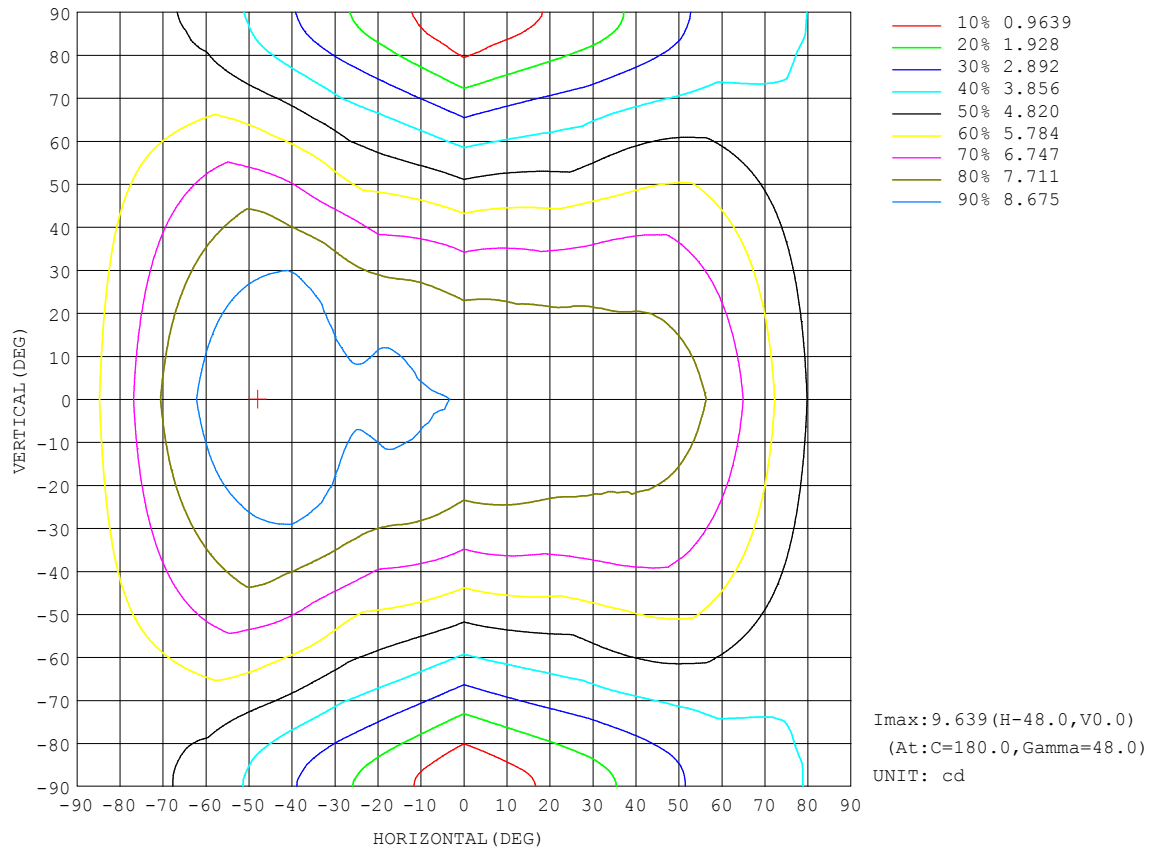
REFLECTANCE										
Ceiling	0.8	0.8	0.8	0.7	0.7	0.7	0.5	0.5	0.5	0
Walls	0.7	0.5	0.3	0.7	0.5	0.3	0.7	0.5	0.3	0
Working plane	0.2	0.2	0.2	0.2	0.2	0.2	0.2	0.2	0.2	0
ROOM INDEX	UTILIZATION FACTORS (PERCENT) $k(RI) \times RCR = 5$									
$k = 0.60$	45	32	25	44	32	25	41	31	24	17
0.80	54	41	33	52	40	32	49	38	31	23
1.00	62	49	40	60	47	39	55	47	38	28
1.25	69	56	47	66	54	46	61	51	44	33
1.50	74	61	53	71	60	51	65	56	49	37
2.00	81	70	62	78	68	60	71	63	56	43
2.50	86	76	68	82	73	65	75	67	61	47
3.00	90	80	73	86	77	70	78	71	66	50
4.00	95	87	80	90	83	77	82	76	71	55
5.00	98	91	85	93	87	81	84	79	75	58
ROOM INDEX	UF(total)									Direct
According to DIN EN 13032-2 2004			Suspended					SHRNOM = 1.25		

C Range: 0 - 360DEG  
 C Interval: 30.0DEG  
 Test Speed: HIGH  
 Temperature:25.3DEG  
 Operators:HXJ  
 Test Date:2022-04-29

$\gamma$  Range: 0 - 180DEG  
 $\gamma$  Interval: 1.0DEG  
 Test System:EVERFINE GO-2000B\_V1 SYSTEM V2.0.269  
 Humidity:65.0%  
 Test Distance:9.200m [K=1.0000]  
 Remarks:

## ISOCANDELA DIAGRAM

Test:U:24.00V I:0.2373A P:5.695W PF:1.000 Lamp Flux:48.798x1 lm		
NAME: SF18-24V-5050-70-SPI4-RGBW-4000-B	TYPE: 硅胶	WEIGHT:
DIM.: 16.5mm*16.5mm	SPEC.:	SERIAL No.:2022042901
MFR.: OLYMPIA	SUR.:1*0.0165	PROTECTION ANGLE:

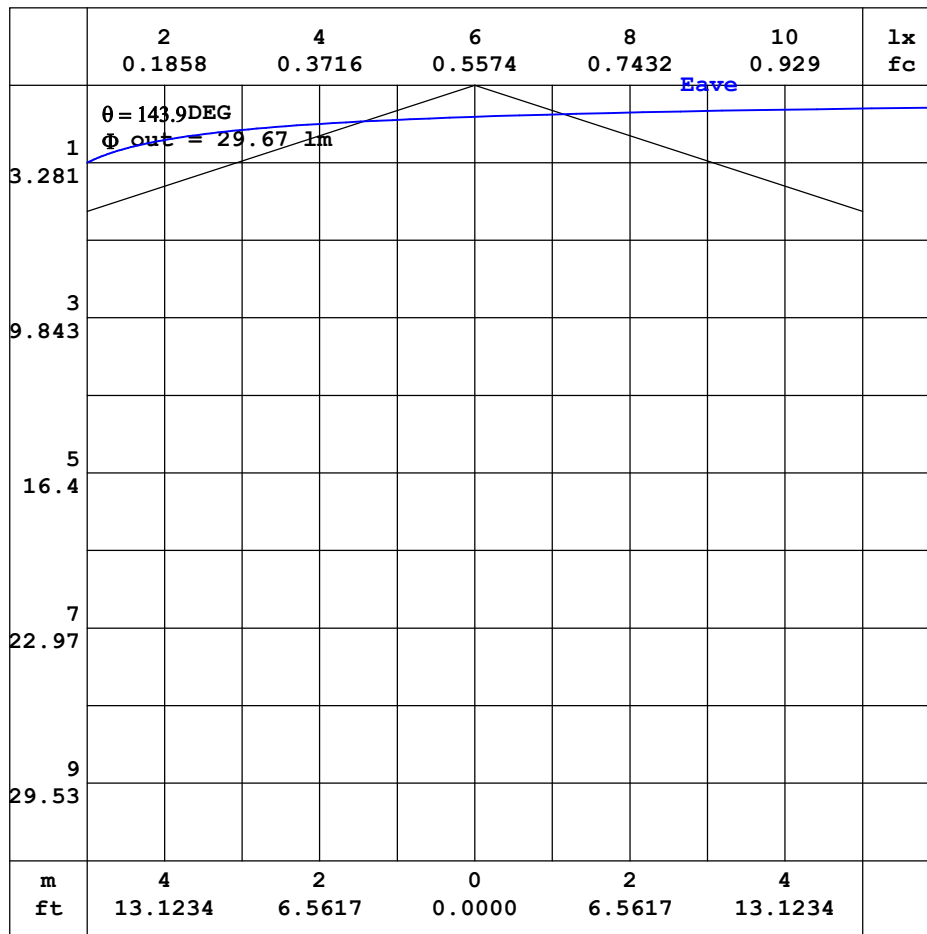


C Range: 0 - 360DEG  
C Interval: 30.0DEG  
Test Speed: HIGH  
Temperature: 25.3DEG  
Operators: HXJ  
Test Date: 2022-04-29

$\gamma$  Range: 0 - 180DEG  
 $\gamma$  Interval: 1.0DEG  
Test System: EVERFINE GO-2000B\_V1 SYSTEM V2.0.269  
Humidity: 65.0%  
Test Distance: 9.200m [K=1.0000]  
Remarks:

## AAI CURVES

Test:U:24.00V I:0.2373A P:5.695W PF:1.000 Lamp Flux:48.798x1 lm		
NAME: SF18-24V-5050-70-SPI4-RGBW-4000-B	TYPE: 硅胶	WEIGHT:
DIM.: 16.5mm*16.5mm	SPEC.:	SERIAL No.:2022042901
MFR.: OLYMPIA	SUR.:1*0.0165	PROTECTION ANGLE:



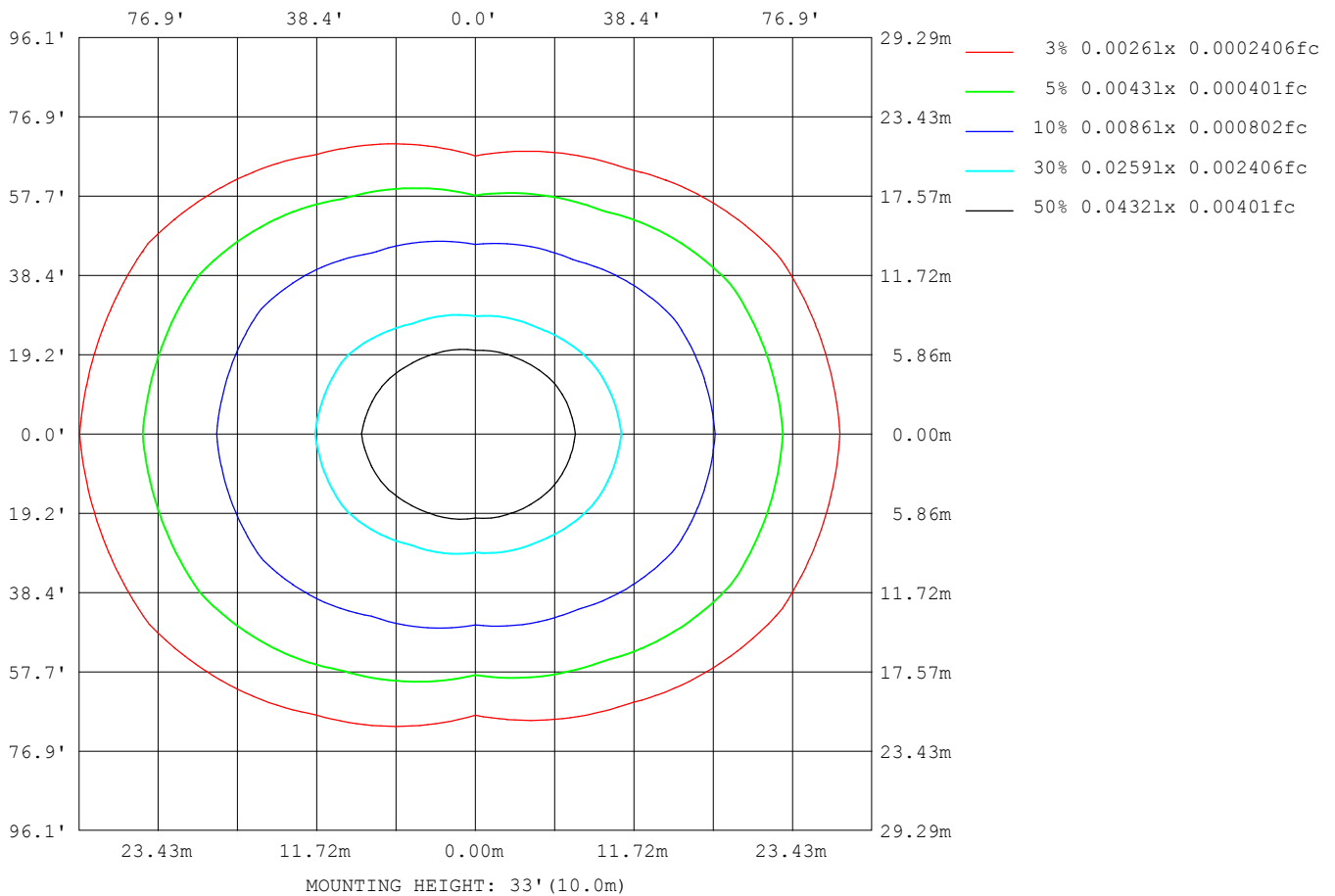
Note: The Curves indicate the illuminated area and the average illumination when the luminaire is at different distance.

C Range: 0 - 360DEG  
 C Interval: 30.0DEG  
 Test Speed: HIGH  
 Temperature: 25.3DEG  
 Operators: HXJ  
 Test Date: 2022-04-29

γ Range: 0 - 180DEG  
 γ Interval: 1.0DEG  
 Test System: EVERFINE GO-2000B\_V1 SYSTEM V2.0.269  
 Humidity: 65.0%  
 Test Distance: 9.200m [K=1.0000]  
 Remarks:

## ISOLUX DIAGRAM

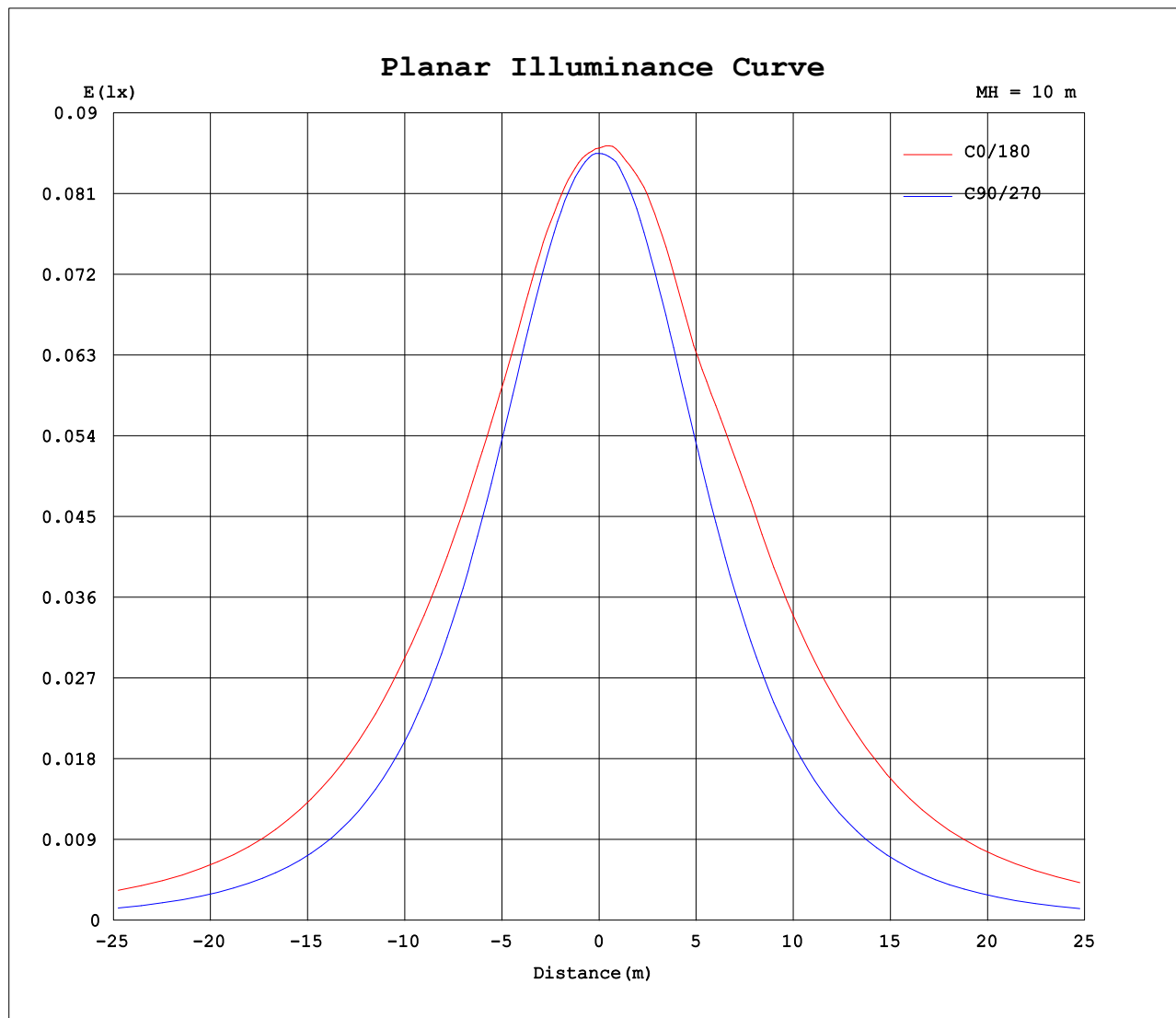
Test:U:24.00V I:0.2373A P:5.695W PF:1.000 Lamp Flux:48.798x1 lm		
NAME: SF18-24V-5050-70-SPI4-RGBW-4000-B	TYPE: 硅胶	WEIGHT:
DIM.: 16.5mm*16.5mm	SPEC.:	SERIAL No.:2022042901
MFR.: OLYMPIA	SUR.:1*0.0165	PROTECTION ANGLE:



C Range: 0 - 360DEG  
C Interval: 30.0DEG  
Test Speed: HIGH  
Temperature:25.3DEG  
Operators:HXJ  
Test Date:2022-04-29

$\gamma$  Range: 0 - 180DEG  
 $\gamma$  Interval: 1.0DEG  
Test System:EVERFINE GO-2000B\_V1 SYSTEM V2.0.269  
Humidity:65.0%  
Test Distance:9.200m [K=1.0000]  
Remarks:

## Planar Illuminance Curve



C Range: 0 - 360DEG  
C Interval: 30.0DEG  
Test Speed: HIGH  
Temperature: 25.3DEG  
Operators: HXJ  
Test Date: 2022-04-29

$\gamma$  Range: 0 - 180DEG  
 $\gamma$  Interval: 1.0DEG  
Test System: EVERFINE GO-2000B\_V1 SYSTEM V2.0.269  
Humidity: 65.0%  
Test Distance: 9.200m [K=1.0000]  
Remarks:

## LUMINOUS DISTRIBUTION INTENSITY DATA

Test:U:24.00V I:0.2373A P:5.695W PF:1.000 Lamp Flux:48.798x1 lm		
NAME: SF18-24V-5050-70-SPI4-RGBW-4000-B	TYPE: 硅胶	WEIGHT:
DIM.: 16.5mm*16.5mm	SPEC.:	SERIAL No.:2022042901
MFR.: OLYMPIA	SUR.:1*0.0165	PROTECTION ANGLE:

Table--1

UNIT: cd

C (DEG) γ (DEG)	0	30	60	90	120	150	180	210	240	270	300	330							
0	8.61	8.56	8.57	8.55	8.55	8.60	8.61	8.56	8.57	8.55	8.55	8.60							
5	8.59	8.53	8.56	8.50	8.56	8.66	8.70	8.63	8.56	8.55	8.49	8.57							
10	8.56	8.49	8.47	8.40	8.55	8.69	8.76	8.65	8.51	8.42	8.39	8.51							
15	8.52	8.39	8.33	8.21	8.46	8.73	8.86	8.68	8.36	8.20	8.23	8.41							
20	8.42	8.29	8.11	7.94	8.32	8.73	8.87	8.70	8.23	7.91	7.99	8.30							
25	8.31	8.13	7.86	7.60	8.18	8.55	8.83	8.59	8.07	7.56	7.72	8.12							
30	8.30	7.95	7.54	7.20	7.93	8.52	9.04	8.51	7.82	7.14	7.40	7.94							
35	8.30	7.85	7.17	6.73	7.52	8.64	9.39	8.57	7.43	6.67	7.02	7.84							
40	8.29	7.67	6.74	6.23	7.08	8.79	9.57	8.70	6.96	6.15	6.59	7.63							
45	8.29	7.54	6.28	5.65	6.64	8.76	9.61	8.71	6.52	5.57	6.11	7.49							
50	8.11	7.37	5.76	5.04	6.15	8.60	9.62	8.63	6.05	4.95	5.58	7.31							
55	7.82	7.04	5.18	4.42	5.63	8.31	9.40	8.35	5.53	4.31	5.01	6.97							
60	7.32	6.62	4.67	3.76	5.19	7.96	8.92	8.01	5.10	3.64	4.47	6.55							
65	6.74	6.13	4.20	3.07	4.76	7.42	8.38	7.46	4.67	2.95	4.01	6.06							
70	6.09	5.52	3.67	2.38	4.21	6.79	7.79	6.84	4.13	2.24	3.49	5.47							
75	5.44	4.77	3.05	1.66	3.62	6.13	7.03	6.19	3.57	1.55	2.89	4.73							
80	4.80	4.09	2.42	0.98	3.02	5.36	6.32	5.43	2.98	0.89	2.28	4.06							
85	4.28	3.56	1.87	0.43	2.47	4.74	5.76	4.84	2.44	0.37	1.73	3.54							
90	4.12	3.41	1.61	0.18	2.21	4.52	5.69	4.61	2.15	0.17	1.50	3.34							
95	4.24	3.51	1.58	0.18	2.11	4.60	5.72	4.62	2.08	0.17	1.42	3.41							
100	4.29	3.54	1.33	0.18	2.02	4.70	5.66	4.74	1.99	0.16	1.19	3.47							
105	4.27	3.26	1.22	0.18	1.96	4.71	5.58	4.75	1.95	0.15	1.10	3.33							
110	4.04	3.02	1.05	0.18	1.94	4.58	5.48	4.66	1.91	0.15	1.08	3.06							
115	3.83	2.78	1.06	0.18	1.91	4.18	5.30	4.27	1.88	0.14	1.06	2.88							
120	3.53	2.55	1.04	0.18	1.77	3.81	4.83	3.89	1.73	0.14	1.00	2.62							
125	3.18	2.29	0.92	0.18	1.58	3.47	4.30	3.54	1.55	0.14	0.82	2.28							
130	2.77	1.79	0.78	0.18	1.36	3.08	3.81	3.15	1.32	0.14	0.68	1.91							
135	2.40	1.53	0.67	0.18	1.14	2.68	3.31	2.71	1.10	0.14	0.55	1.63							
140	2.01	1.17	0.57	0.18	0.95	2.22	2.76	2.25	0.89	0.14	0.44	1.25							
145	1.58	0.92	0.47	0.18	0.77	1.73	2.22	1.77	0.71	0.14	0.36	0.92							
150	1.13	0.72	0.38	0.18	0.59	1.34	1.67	1.38	0.53	0.14	0.28	0.69							
155	0.87	0.53	0.32	0.18	0.46	1.01	1.23	1.05	0.39	0.14	0.21	0.54							
160	0.71	0.36	0.27	0.18	0.36	0.70	0.87	0.74	0.30	0.14	0.18	0.39							
165	0.45	0.24	0.22	0.18	0.28	0.43	0.52	0.47	0.21	0.14	0.14	0.26							
170	0.23	0.18	0.20	0.18	0.26	0.27	0.20	0.32	0.20	0.14	0.14	0.21							
175	0.19	0.17	0.19	0.18	0.24	0.21	0.18	0.24	0.19	0.14	0.14	0.20							
180	0.17	0.17	0.18	0.18	0.19	0.19	0.18	0.19	0.18	0.14	0.14	0.18							

C Range: 0 - 360DEG  
C Interval: 30.0DEG  
Test Speed: HIGH  
Temperature:25.3DEG  
Operators:HXJ  
Test Date:2022-04-29

γ Range: 0 - 180DEG  
γ Interval: 1.0DEG  
Test System:EVERFINE GO-2000B\_V1 SYSTEM V2.0.269  
Humidity:65.0%  
Test Distance:9.200m [K=1.0000]  
Remarks:

## Photometric Data Table [cd]

G/C	0.0	30.0	60.0	90.0	120.0	150.0	180.0	210.0	240.0	270.0
0.0	8.609	8.559	8.569	8.549	8.549	8.599	8.609	8.559	8.569	8.549
3.0	8.589	8.544	8.569	8.534	8.559	8.644	8.670	8.604	8.564	8.549
6.0	8.584	8.524	8.554	8.483	8.564	8.668	8.705	8.634	8.559	8.529
9.0	8.569	8.493	8.494	8.418	8.553	8.680	8.735	8.647	8.528	8.449
12.0	8.534	8.463	8.418	8.327	8.534	8.700	8.805	8.660	8.458	8.338
15.0	8.524	8.393	8.328	8.212	8.459	8.726	8.861	8.684	8.363	8.197
18.0	8.469	8.353	8.208	8.051	8.373	8.736	8.875	8.730	8.277	8.032
21.0	8.398	8.262	8.067	7.880	8.298	8.714	8.864	8.691	8.187	7.846
24.0	8.328	8.167	7.916	7.674	8.212	8.594	8.841	8.624	8.091	7.635
27.0	8.302	8.061	7.745	7.447	8.107	8.542	8.866	8.524	7.990	7.399
30.0	8.299	7.951	7.544	7.201	7.931	8.524	9.042	8.508	7.824	7.137
33.0	8.297	7.910	7.318	6.940	7.695	8.594	9.253	8.513	7.588	6.856
36.0	8.295	7.825	7.087	6.643	7.439	8.675	9.444	8.589	7.336	6.569
39.0	8.292	7.694	6.826	6.331	7.168	8.750	9.563	8.674	7.050	6.248
42.0	8.290	7.624	6.560	6.005	6.896	8.790	9.588	8.735	6.779	5.916
45.0	8.288	7.543	6.278	5.653	6.640	8.765	9.614	8.709	6.523	5.570
48.0	8.202	7.443	5.982	5.296	6.363	8.679	9.639	8.683	6.256	5.198
51.0	8.067	7.322	5.650	4.924	6.052	8.553	9.604	8.579	5.954	4.826
54.0	7.901	7.121	5.298	4.537	5.736	8.387	9.468	8.409	5.638	4.444
57.0	7.650	6.874	4.977	4.160	5.444	8.181	9.211	8.233	5.346	4.052
60.0	7.324	6.623	4.675	3.763	5.192	7.960	8.919	8.007	5.100	3.640
63.0	6.987	6.331	4.399	3.351	4.941	7.658	8.583	7.695	4.859	3.233
66.0	6.630	6.005	4.107	2.944	4.655	7.296	8.261	7.349	4.572	2.816
69.0	6.233	5.648	3.786	2.522	4.323	6.924	7.924	6.972	4.250	2.383
72.0	5.817	5.225	3.429	2.089	3.982	6.557	7.507	6.610	3.909	1.961
75.0	5.439	4.768	3.052	1.657	3.625	6.125	7.034	6.188	3.567	1.554
78.0	5.042	4.361	2.670	1.245	3.268	5.653	6.592	5.721	3.225	1.142
81.0	4.675	3.974	2.303	0.8483	2.901	5.216	6.200	5.303	2.868	0.7749
84.0	4.359	3.653	1.966	0.5218	2.564	4.849	5.849	4.936	2.532	0.4785
87.0	4.202	3.437	1.710	0.2458	2.323	4.608	5.734	4.705	2.276	0.2569
90.0	4.121	3.408	1.609	0.1759	2.206	4.518	5.689	4.606	2.151	0.1748
93.0	4.171	3.468	1.593	0.1759	2.151	4.548	5.711	4.612	2.101	0.1703
96.0	4.252	3.528	1.524	0.1759	2.106	4.624	5.728	4.618	2.065	0.1658
99.0	4.297	3.563	1.368	0.1759	2.041	4.688	5.684	4.709	2.010	0.1614
102.0	4.297	3.477	1.282	0.1759	1.990	4.712	5.614	4.769	1.974	0.1569
105.0	4.272	3.256	1.216	0.1759	1.960	4.714	5.578	4.754	1.950	0.1524
108.0	4.117	3.116	1.161	0.1759	1.940	4.649	5.518	4.724	1.918	0.1495
111.0	4.001	2.965	1.053	0.1759	1.935	4.528	5.438	4.614	1.913	0.1467
114.0	3.880	2.829	1.058	0.1759	1.930	4.271	5.347	4.363	1.900	0.1407
117.0	3.705	2.703	1.064	0.1759	1.865	4.005	5.135	4.097	1.834	0.1357
120.0	3.529	2.547	1.037	0.1759	1.769	3.809	4.834	3.886	1.734	0.1357
123.0	3.328	2.397	0.9956	0.1759	1.664	3.598	4.497	3.679	1.648	0.1357
126.0	3.102	2.205	0.8899	0.1759	1.543	3.392	4.205	3.463	1.502	0.1357
129.0	2.851	1.879	0.8044	0.1759	1.403	3.155	3.909	3.227	1.366	0.1357
132.0	2.619	1.718	0.7340	0.1759	1.267	2.924	3.608	2.976	1.231	0.1357
135.0	2.403	1.532	0.6737	0.1759	1.141	2.678	3.311	2.715	1.095	0.1357
138.0	2.167	1.341	0.6133	0.1759	1.026	2.381	2.984	2.443	0.9794	0.1357
141.0	1.926	1.115	0.5431	0.1759	0.9151	2.115	2.662	2.152	0.8590	0.1357
144.0	1.670	0.9696	0.4977	0.1759	0.8145	1.814	2.336	1.865	0.7484	0.1357
147.0	1.269	0.8239	0.4425	0.1759	0.6990	1.557	1.999	1.599	0.6329	0.1357
150.0	1.126	0.7234	0.3823	0.1759	0.5884	1.341	1.672	1.383	0.5275	0.1357
153.0	0.9858	0.5978	0.3369	0.1759	0.4929	1.135	1.401	1.182	0.4369	0.1357
156.0	0.8148	0.5123	0.3167	0.1759	0.4325	0.9544	1.155	0.9906	0.3667	0.1357
159.0	0.7339	0.4017	0.2765	0.1759	0.3721	0.7634	0.9241	0.8096	0.3114	0.1357
162.0	0.6038	0.3014	0.2464	0.1759	0.3319	0.5724	0.7173	0.6137	0.2711	0.1357
165.0	0.4530	0.2361	0.2163	0.1759	0.2766	0.4319	0.5169	0.4728	0.2110	0.1357
168.0	0.3320	0.1909	0.2061	0.1759	0.2664	0.3314	0.3562	0.3671	0.2054	0.1357
171.0	0.2163	0.1752	0.1961	0.1759	0.2523	0.2361	0.1909	0.2817	0.1998	0.1357
174.0	0.1911	0.1730	0.1860	0.1759	0.2402	0.2130	0.1834	0.2464	0.1914	0.1357
177.0	0.1810	0.1709	0.1809	0.1759	0.2262	0.2010	0.1759	0.2413	0.1809	0.1357
180.0	0.1709	0.1709	0.1759	0.1759	0.1910	0.1860	0.1759	0.1910	0.1809	0.1357
G/C	300.0	330.0								
0.0	8.549	8.599								
3.0	8.508	8.569								
6.0	8.473	8.554								
9.0	8.418	8.524								
12.0	8.327	8.469								
15.0	8.232	8.408								
18.0	8.106	8.363								
21.0	7.945	8.263								
24.0	7.779	8.162								
27.0	7.603	8.037								
30.0	7.397	7.936								

C Range: 0 - 360DEG  
 C Interval: 30.0DEG  
 Test Speed: HIGH  
 Temperature: 25.3DEG  
 Operators: HXJ  
 Test Date: 2022-04-29

γ Range: 0 - 180DEG  
 γ Interval: 1.0DEG  
 Test System: EVERFINE GO-2000B\_V1 SYSTEM V2.0.269  
 Humidity: 65.0%  
 Test Distance: 9.200m [K=1.0000]  
 Remarks:

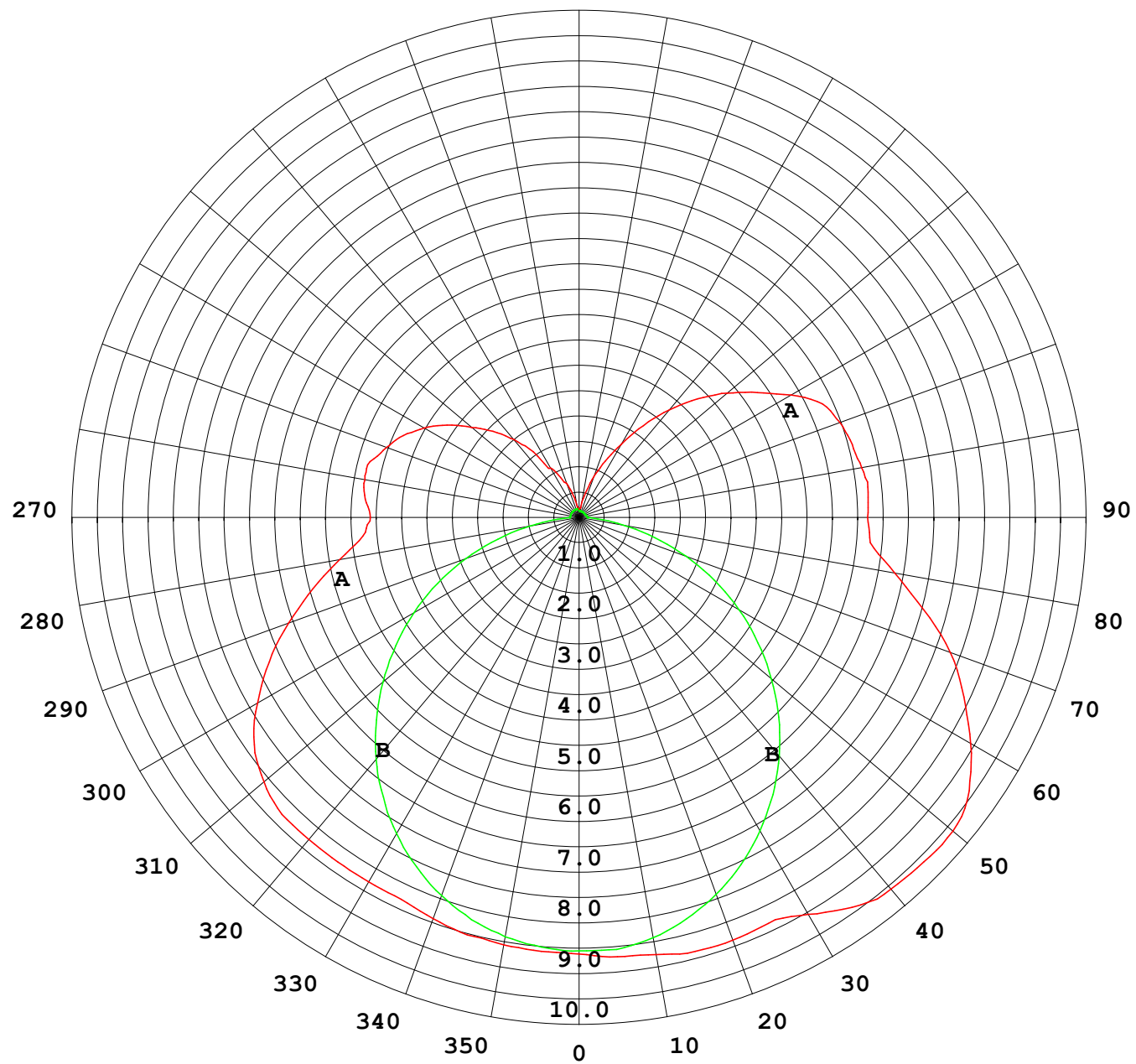
## Photometric Data Table [cd]

33.0	7.176	7.896
36.0	6.935	7.790
39.0	6.678	7.665
42.0	6.397	7.574
45.0	6.105	7.494
48.0	5.813	7.393
51.0	5.467	7.253
54.0	5.115	7.057
57.0	4.783	6.796
60.0	4.472	6.554
63.0	4.195	6.273
66.0	3.914	5.956
69.0	3.597	5.595
72.0	3.245	5.183
75.0	2.889	4.731
78.0	2.522	4.303
81.0	2.165	3.936
84.0	1.828	3.619
87.0	1.568	3.428
90.0	1.499	3.342
93.0	1.471	3.352
96.0	1.366	3.432
99.0	1.236	3.476
102.0	1.150	3.455
105.0	1.097	3.328
108.0	1.084	3.151
111.0	1.072	3.031
114.0	1.060	2.920
117.0	1.040	2.800
120.0	0.9997	2.624
123.0	0.8941	2.413
126.0	0.7588	2.222
129.0	0.6983	1.956
132.0	0.6229	1.830
135.0	0.5526	1.629
138.0	0.4871	1.423
141.0	0.4320	1.182
144.0	0.3717	0.9756
147.0	0.3215	0.8294
150.0	0.2762	0.6889
153.0	0.2210	0.5884
156.0	0.1999	0.5278
159.0	0.1818	0.4175
162.0	0.1567	0.3220
165.0	0.1447	0.2616
168.0	0.1398	0.2212
171.0	0.1384	0.2110
174.0	0.1371	0.1961
177.0	0.1357	0.1910
180.0	0.1357	0.1809

C Range: 0 - 360DEG  
 C Interval: 30.0DEG  
 Test Speed: HIGH  
 Temperature: 25.3DEG  
 Operators: HXJ  
 Test Date: 2022-04-29

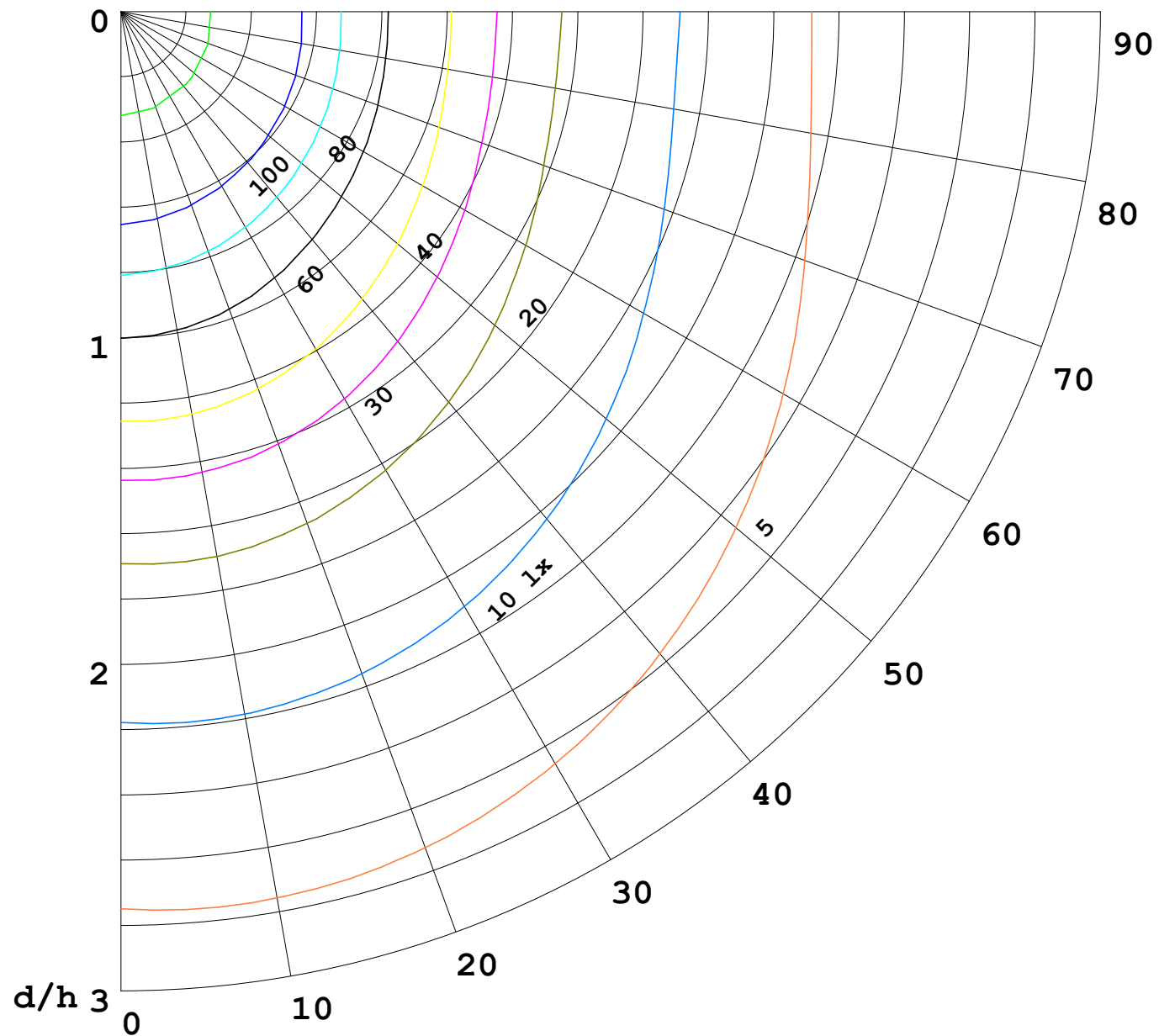
γ Range: 0 - 180DEG  
 γ Interval: 1.0DEG  
 Test System: EVERFINE GO-2000B\_V1 SYSTEM V2.0.269  
 Humidity: 65.0%  
 Test Distance: 9.200m [K=1.0000]  
 Remarks:

I (cd)



1000 lm

$\kappa = 1$



F = 5000 lm  
 K = 0.7  
 Hcc = 0.0 m  
 Hfc = 0.0 m  
 Eave = 100 lx

	Pcc	Pw	Pfc
—	70	50	30
—	50	30	20

