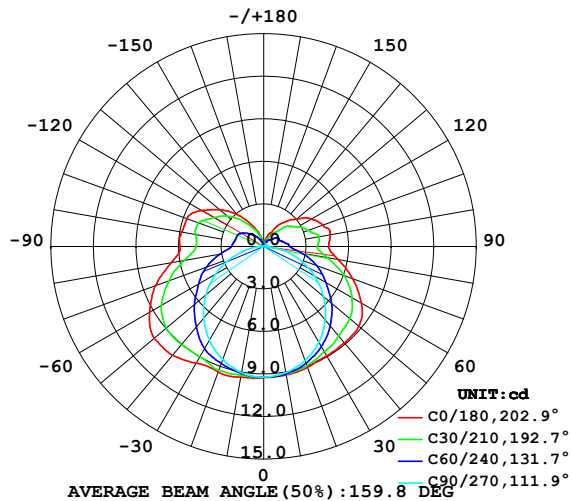


LUMINAIRE PHOTOMETRIC TEST REPORT

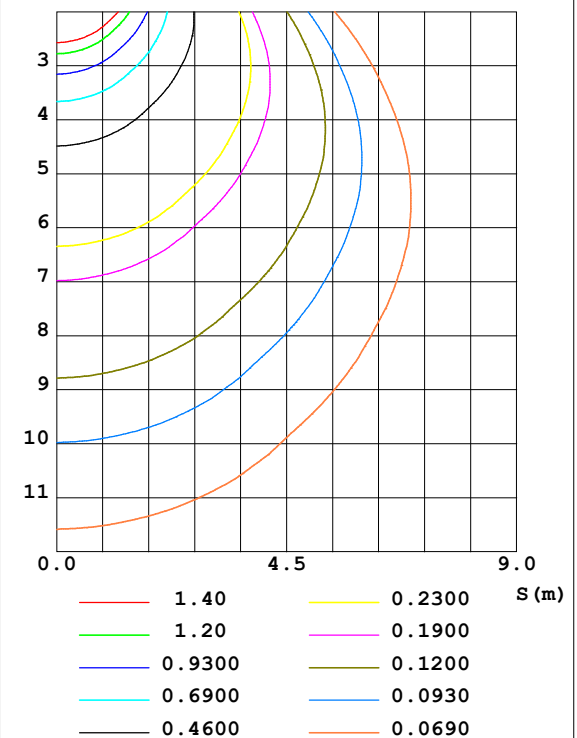
Test:U:24.00V I:0.2370A P:5.688W PF:1.000 Lamp Flux:52.435x1 lm		
NAME: SF18-24V-5050-70-SPI4-3000-B	TYPE: 硅胶	WEIGHT:
DIM.: 16.5mm*16.5mm	SPEC.:	SERIAL No.:2022042901
MFR.: OLYMPIA	SUR.:1*0.0165	PROTECTION ANGLE:

DATA OF LAMP		PHOTOMETRIC DATA				Eff: 9.22 lm/W
MODEL	5050	I _{max} (cd)	10.08	S/MH (C0/180)	1.47	
NOMINAL POWER (W)	4.5	LOR (%)	100.0	S/MH (C90/270)	1.26	
RATED VOLTAGE (V)	24	TOTAL FLUX (lm)	52.430	η UP, DN (C0-180)	12.3, 37.0	
NOMINAL FLUX (lm)	52.435	CIE CLASS	SEMI-D.	η UP, DN (C180-360)	13.2, 37.5	
LAMPS INSIDE	1	η up (%)	25.5	CIBSE SHR NOM	1.50	
TEST VOLTAGE (V)	24.0	η down (%)	74.4	CIBSE SHR MAX	1.55	

LUMINOUS INTENSITY DISTRIBUTION DIAGRAM



C0 PLANE ISOLUX DIAGRAM (UNIT:lx)



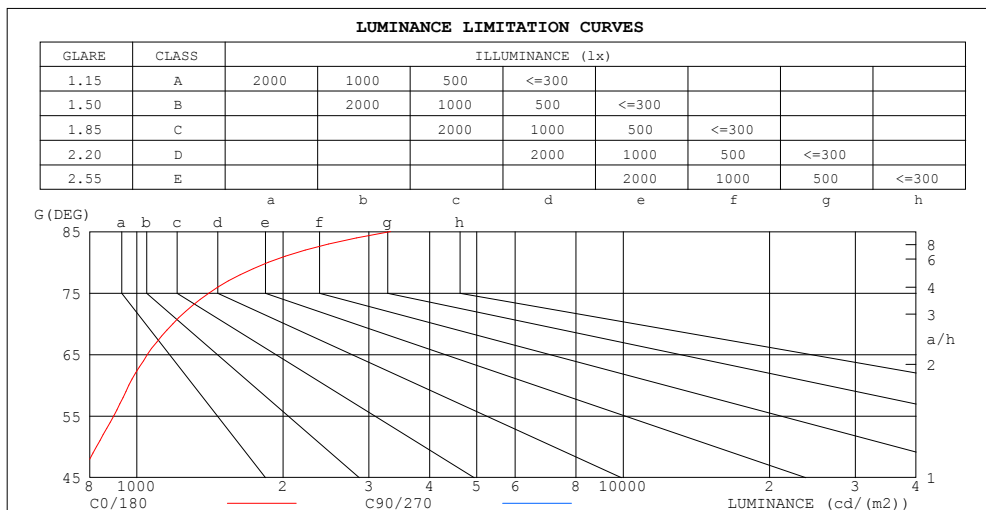
C Range: 0 - 360DEG
C Interval: 30.0DEG
Test Speed: HIGH
Temperature: 25.3DEG
Operators: HXJ
Test Date: 2022-04-29

γ Range: 0 - 180DEG
γ Interval: 1.0DEG
Test System: EVERFINE GO-2000B_V1 SYSTEM V2.0.269
Humidity: 65.0%
Test Distance: 9.200m [K=1.0000]
Remarks:

ZONAL FLUX DIAGRAM AND LUMINANCE LIMITATION CURVES

ZONAL FLUX DIAGRAM:

γ	C0	C45	C90	C135	C180	C225	C270	C315	γ	Φ zone	Φ total	%lum, lamp
10	9.202	9.132	9.036	9.247	9.358	9.171	9.042	9.084	0- 10	0.8774	0.8774	1.67,1.67
20	9.062	8.861	8.553	9.129	9.428	9.028	8.479	8.772	10- 20	2.565	3.442	6.57,6.57
30	8.910	8.361	7.784	8.786	9.514	8.662	7.660	8.239	20- 30	4.026	7.468	14.2,14.2
40	8.865	7.775	6.764	8.368	10.03	8.216	6.590	7.616	30- 40	5.191	12.66	24.1,24.1
50	8.765	7.097	5.517	7.795	10.08	7.679	5.324	6.922	40- 50	5.972	18.63	35.5,35.5
60	7.952	6.126	4.130	6.920	9.291	6.812	3.916	5.940	50- 60	6.200	24.83	47.4,47.4
70	6.696	5.031	2.662	5.807	8.140	5.714	2.429	4.855	60- 70	5.785	30.62	58.4,58.4
80	5.339	3.639	1.170	4.450	6.633	4.400	1.077	3.518	70- 80	4.796	35.41	67.5,67.5
90	4.586	2.815	0.2561	3.561	5.915	3.503	0.1709	2.701	80- 90	3.623	39.03	74.5,74.4
100	4.774	2.750	0.2111	3.581	5.890	3.503	0.1709	2.636	90-100	3.281	42.32	80.7,80.7
110	4.448	2.294	0.2111	3.488	5.762	3.470	0.1709	2.390	100-110	3.095	45.41	86.6,86.6
120	3.886	1.994	0.2111	2.980	5.085	2.968	0.1709	2.076	110-120	2.637	48.05	91.6,91.6
130	3.017	1.555	0.2111	2.387	4.049	2.377	0.1709	1.578	120-130	1.971	50.02	95.4,95.4
140	2.232	0.9925	0.2111	1.711	2.954	1.696	0.1709	1.000	130-140	1.281	51.30	97.8,97.8
150	1.209	0.5879	0.2111	1.060	1.813	1.055	0.1709	0.5830	140-150	0.6959	52.00	99.2,99.2
160	0.7947	0.3567	0.2111	0.5979	0.9892	0.5831	0.1709	0.3388	150-160	0.3069	52.30	99.8,99.7
170	0.2616	0.2295	0.2111	0.3039	0.2659	0.2949	0.1709	0.2376	160-170	0.1050	52.41	100,99.9
180	0.2061	0.2111	0.2111	0.2262	0.2111	0.2236	0.1910	0.2186	170-180	0.0224	52.43	100,100
DEG	LUMINOUS INTENSITY:cd									UNIT:lm		



LUMINANCE cd/(m2)		
G (DEG)	C0/180	C90/270
85	3328	363
80	1863	408
75	1408	446
70	1186	472
65	1051	488
60	964	501
55	896	511
50	826	520
45	759	529

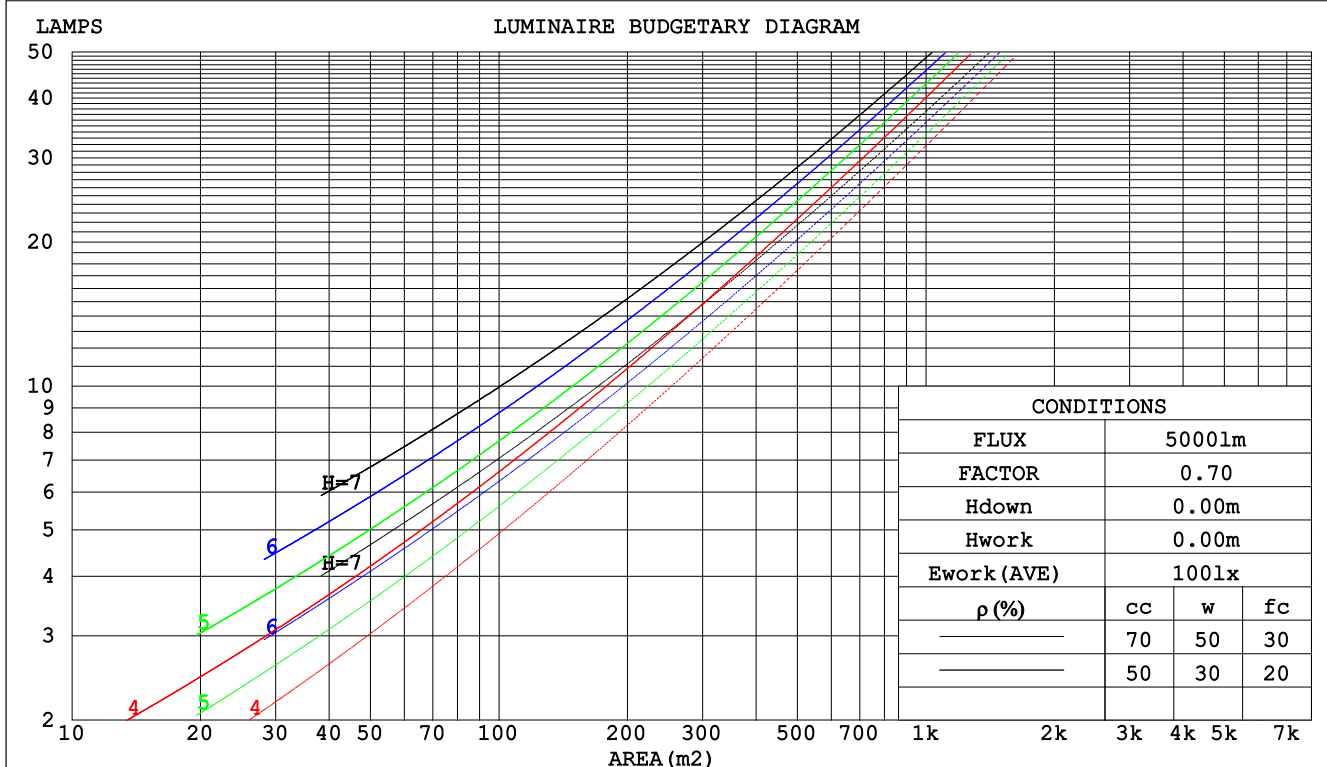
C Range: 0 - 360DEG
C Interval: 30.0DEG
Test Speed: HIGH
Temperature:25.3DEG
Operators:HXJ
Test Date:2022-04-29

γ Range: 0 - 180DEG
 γ Interval: 1.0DEG
Test System:EVERFINE GO-2000B_V1 SYSTEM V2.0.269
Humidity:65.0%
Test Distance:9.200m [K=1.0000]
Remarks:

CU AND LUMINAIRE BUDGETARY ESTIMATE DIAGRAM

Test:U:24.00V I:0.2370A P:5.688W PF:1.000 Lamp Flux:52.435x1 lm		
NAME: SF18-24V-5050-70-SPI4-3000-B	TYPE: 硅胶	WEIGHT:
DIM.: 16.5mm*16.5mm	SPEC.:	SERIAL No.:2022042901
MFR.: OLYMPIA	SUR.:1*0.0165	PROTECTION ANGLE:

pcc	80%			70%			50%			30%			10%			0
pw	50%	30%	10%	50%	30%	10%	50%	30%	10%	50%	30%	10%	50%	30%	10%	0
pfc	20%			20%			20%			20%			20%			0
RCR	RCR:Room Cavity Ratio						Coefficients of Utilization(CU)									
0.0	1.13	1.13	1.13	1.07	1.07	1.07	.97	.97	.97	.87	.87	.87	.79	.79	.79	.74
1.0	.94	.89	.84	.89	.84	.80	.80	.76	.73	.72	.69	.66	.64	.62	.60	.56
2.0	.80	.72	.66	.76	.69	.63	.68	.63	.58	.61	.57	.53	.55	.51	.48	.44
3.0	.69	.60	.53	.66	.58	.51	.59	.52	.47	.53	.48	.43	.47	.43	.39	.36
4.0	.61	.51	.44	.58	.49	.42	.52	.45	.39	.47	.41	.36	.42	.37	.33	.30
5.0	.54	.44	.37	.51	.42	.36	.46	.39	.33	.41	.35	.31	.37	.32	.28	.25
6.0	.48	.39	.32	.46	.37	.31	.41	.34	.29	.37	.31	.26	.33	.28	.24	.22
7.0	.43	.34	.28	.41	.33	.27	.37	.30	.25	.34	.28	.23	.30	.25	.21	.19
8.0	.39	.30	.24	.37	.29	.24	.34	.27	.22	.31	.25	.20	.28	.23	.19	.16
9.0	.36	.27	.22	.34	.26	.21	.31	.24	.20	.28	.22	.18	.25	.20	.17	.15
10.0	.33	.25	.19	.31	.24	.19	.29	.22	.18	.26	.20	.16	.24	.19	.15	.13



C Range: 0 - 360DEG
 C Interval: 30.0DEG
 Test Speed: HIGH
 Temperature:25.3DEG
 Operators:HXJ
 Test Date:2022-04-29

γ Range: 0 - 180DEG
 γ Interval: 1.0DEG
 Test System:EVERFINE GO-2000B_V1 SYSTEM V2.0.269
 Humidity:65.0%
 Test Distance:9.200m [K=1.0000]
 Remarks:

WEC AND CCEC

Test:U:24.00V I:0.2370A P:5.688W PF:1.000 Lamp Flux:52.435x1 lm		
NAME: SF18-24V-5050-70-SPI4-3000-B	TYPE: 硅胶	WEIGHT:
DIM.: 16.5mm*16.5mm	SPEC.:	SERIAL No.:2022042901
MFR.: OLYMPIA	SUR.:1*0.0165	PROTECTION ANGLE:

pcc	80%			70%			50%			30%			10%			0	
pw	50%	30%	10%	50%	30%	10%	50%	30%	10%	50%	30%	10%	50%	30%	10%	0	
pfc	20%			20%			20%			20%			20%			0	
RCR	RCR:Room Cavity Ratio						Wall Exitance Coefficients(WEC)										
0.0																	
1.0	.380	.216	.069	.365	.208	.066	.337	.194	.062	.312	.180	.058	.288	.167	.054		
2.0	.330	.181	.056	.317	.175	.054	.291	.162	.050	.268	.150	.047	.246	.139	.044		
3.0	.294	.156	.047	.282	.151	.045	.259	.140	.043	.237	.130	.040	.217	.120	.037		
4.0	.265	.138	.040	.254	.133	.039	.233	.123	.037	.213	.114	.035	.195	.106	.032		
5.0	.241	.123	.036	.231	.118	.034	.211	.110	.032	.193	.102	.030	.177	.094	.028		
6.0	.221	.111	.032	.211	.107	.031	.194	.099	.029	.177	.092	.027	.162	.085	.025		
7.0	.203	.101	.029	.195	.097	.028	.179	.090	.026	.164	.084	.024	.149	.078	.023		
8.0	.189	.092	.026	.181	.089	.025	.166	.083	.024	.152	.077	.022	.139	.071	.021		
9.0	.176	.085	.024	.169	.082	.023	.155	.077	.022	.142	.071	.020	.129	.066	.019		
10.0	.164	.079	.022	.158	.076	.021	.145	.071	.020	.133	.066	.019	.121	.061	.018		

pcc	80%			70%			50%			30%			10%			0
pw	50%	30%	10%	50%	30%	10%	50%	30%	10%	50%	30%	10%	50%	30%	10%	0
pfc	20%			20%			20%			20%			20%			0
RCR	RCR:Room Cavity Ratio						Ceiling Cavity Exitance Coefficients(CCEC)									
0.0	.385	.385	.385	.329	.329	.329	.225	.225	.225	.129	.129	.129	.041	.041	.041	
1.0	.381	.352	.325	.326	.302	.280	.223	.208	.193	.128	.120	.113	.041	.039	.036	
2.0	.375	.329	.291	.321	.283	.251	.220	.196	.175	.127	.114	.103	.041	.037	.034	
3.0	.368	.313	.270	.315	.270	.234	.216	.188	.164	.125	.110	.097	.040	.036	.032	
4.0	.360	.301	.255	.309	.260	.222	.213	.181	.156	.123	.106	.092	.040	.035	.030	
5.0	.353	.291	.246	.303	.252	.214	.209	.176	.151	.121	.103	.090	.039	.034	.030	
6.0	.345	.283	.239	.297	.245	.208	.205	.172	.147	.119	.101	.088	.038	.033	.029	
7.0	.338	.277	.234	.291	.240	.204	.201	.168	.144	.117	.099	.086	.038	.032	.028	
8.0	.332	.271	.230	.286	.235	.201	.198	.165	.142	.115	.098	.085	.037	.032	.028	
9.0	.326	.267	.227	.281	.232	.198	.194	.163	.141	.113	.096	.084	.037	.032	.028	
10.0	.320	.263	.225	.276	.228	.196	.191	.161	.139	.112	.095	.083	.036	.031	.028	

C Range: 0 - 360DEG
 C Interval: 30.0DEG
 Test Speed: HIGH
 Temperature:25.3DEG
 Operators:HXJ
 Test Date:2022-04-29

γ Range: 0 - 180DEG
 γ Interval: 1.0DEG
 Test System:EVERFINE GO-2000B_V1 SYSTEM V2.0.269
 Humidity:65.0%
 Test Distance:9.200m [K=1.0000]
 Remarks:

Uncorrected UGR Table

Test:U:24.00V I:0.2370A P:5.688W PF:1.000 Lamp Flux:52.435x1 lm										
NAME: SF18-24V-5050-70-SPI4-3000-B					TYPE: 硅胶			WEIGHT:		
DIM.: 16.5mm*16.5mm					SPEC.:			SERIAL No.:2022042901		
MFR.: OLYMPIA					SUR.:1*0.0165			PROTECTION ANGLE:		
ceiling/cavity	0.7	0.7	0.5	0.5	0.3	0.7	0.7	0.5	0.5	0.3
walls	0.5	0.3	0.5	0.3	0.3	0.5	0.3	0.5	0.3	0.3
working plane	0.2	0.2	0.2	0.2	0.2	0.2	0.2	0.2	0.2	0.2
Room dimensions	Viewed crosswise					Viewed endwise				
x = 2H y = 2H	11.3	12.6	11.9	13.2	13.9	8.5	9.8	9.1	10.5	11.2
3H	13.9	15.1	14.6	15.8	16.5	10.2	11.4	10.8	12.0	12.8
4H	15.3	16.4	16.0	17.1	17.9	10.9	12.0	11.5	12.7	13.4
6H	16.8	17.8	17.4	18.5	19.3	11.4	12.4	12.0	13.1	13.9
8H	17.6	18.6	18.3	19.3	20.1	11.5	12.6	12.2	13.2	14.0
12H	18.5	19.5	19.2	20.2	21.0	11.6	12.6	12.3	13.3	14.1
4H 2H	11.8	12.9	12.5	13.6	14.4	9.8	10.9	10.5	11.6	12.4
3H	14.7	15.7	15.4	16.4	17.2	11.7	12.6	12.3	13.3	14.2
4H	16.2	17.1	16.9	17.9	18.7	12.5	13.4	13.2	14.1	15.0
6H	17.9	18.7	18.6	19.4	20.3	13.2	14.0	13.9	14.7	15.6
8H	18.8	19.6	19.6	20.3	21.2	13.4	14.2	14.2	14.9	15.8
12H	19.9	20.6	20.7	21.4	22.3	13.6	14.3	14.4	15.1	16.0
8H 4H	16.5	17.3	17.3	18.0	18.9	13.5	14.3	14.3	15.0	15.9
6H	18.5	19.1	19.2	19.9	20.8	14.5	15.2	15.3	16.0	16.9
8H	19.6	20.2	20.4	21.0	21.9	15.0	15.5	15.8	16.3	17.3
12H	20.9	21.4	21.7	22.2	23.2	15.3	15.8	16.1	16.6	17.6
12H 4H	16.5	17.2	17.3	18.0	18.9	13.8	14.5	14.6	15.3	16.2
6H	18.5	19.1	19.3	19.9	20.9	15.1	15.6	15.8	16.4	17.4
8H	19.8	20.3	20.6	21.1	22.1	15.6	16.1	16.5	17.0	17.9
Variations with the observer position at spacings:										
S = 1.0H	+ 0.1 / - 0.1					+ 0.1 / - 0.1				
1.5H	+ 0.2 / - 0.2					+ 0.2 / - 0.3				
2.0H	+ 0.2 / - 0.3					+ 0.2 / - 0.4				

CIE Pub.117 Corrected 52.44 lm Total Lamp Luminous Flux.(8log(F/F0) = -10.2)

C Range: 0 - 360DEG
C Interval: 30.0DEG
Test Speed: HIGH
Temperature:25.3DEG
Operators:HXJ
Test Date:2022-04-29

γ Range: 0 - 180DEG
γ Interval: 1.0DEG
Test System:EVERFINE GO-2000B_V1 SYSTEM V2.0.269
Humidity:65.0%
Test Distance:9.200m [K=1.0000]
Remarks:

UTILIZATION FACTORS TABLE

Test:U:24.00V I:0.2370A P:5.688W PF:1.000 Lamp Flux:52.435x1 lm		
NAME: SF18-24V-5050-70-SPI4-3000-B	TYPE: 硅胶	WEIGHT:
DIM.: 16.5mm*16.5mm	SPEC.:	SERIAL No.:2022042901
MFR.: OLYMPIA	SUR.:1*0.0165	PROTECTION ANGLE:

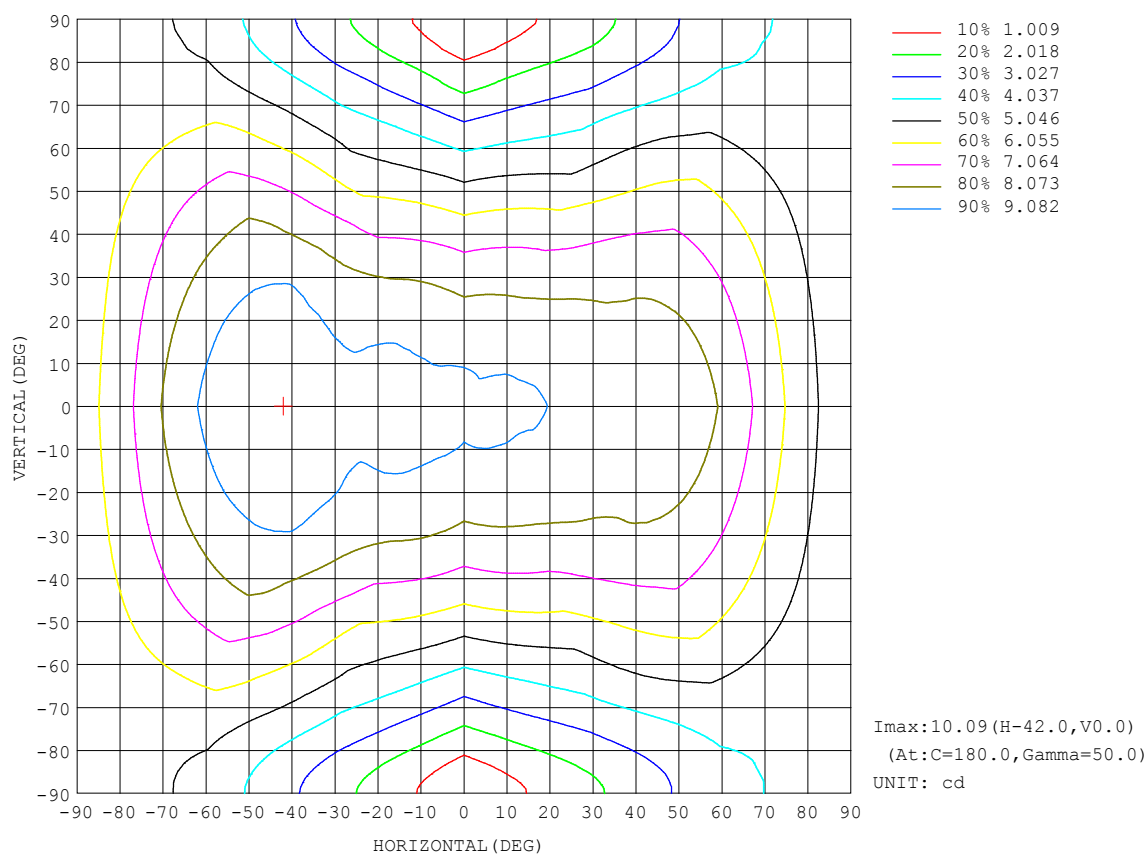
REFLECTANCE										
Ceiling	0.8	0.8	0.8	0.7	0.7	0.7	0.5	0.5	0.5	0
Walls	0.7	0.5	0.3	0.7	0.5	0.3	0.7	0.5	0.3	0
Working plane	0.2	0.2	0.2	0.2	0.2	0.2	0.2	0.2	0.2	0
ROOM INDEX	UTILIZATION FACTORS (PERCENT) $k(RI) \times RCR = 5$									
$k = 0.60$	45	32	25	43	32	25	41	31	24	17
0.80	54	41	33	52	40	32	49	38	31	23
1.00	62	48	40	59	47	39	55	47	38	28
1.25	69	56	47	66	54	46	61	51	44	33
1.50	74	61	53	71	59	51	65	56	49	37
2.00	81	70	61	78	67	60	71	63	56	43
2.50	86	76	67	82	73	65	75	67	61	47
3.00	90	80	73	86	77	70	78	71	65	50
4.00	95	87	80	90	83	77	82	76	71	54
5.00	98	91	85	93	87	81	84	79	75	57
ROOM INDEX	UF (total)									Direct
According to DIN EN 13032-2 2004			Suspended					SHR NOM = 1.25		

C Range: 0 - 360DEG
 C Interval: 30.0DEG
 Test Speed: HIGH
 Temperature: 25.3DEG
 Operators: HXJ
 Test Date: 2022-04-29

γ Range: 0 - 180DEG
 γ Interval: 1.0DEG
 Test System: EVERFINE GO-2000B_V1 SYSTEM V2.0.269
 Humidity: 65.0%
 Test Distance: 9.200m [K=1.0000]
 Remarks:

ISOCANDELA DIAGRAM

Test:U:24.00V I:0.2370A P:5.688W PF:1.000 Lamp Flux:52.435x1 lm		
NAME: SF18-24V-5050-70-SPI4-3000-B	TYPE: 硅胶	WEIGHT:
DIM.: 16.5mm*16.5mm	SPEC.:	SERIAL No.:2022042901
MFR.: OLYMPIA	SUR.:1*0.0165	PROTECTION ANGLE:

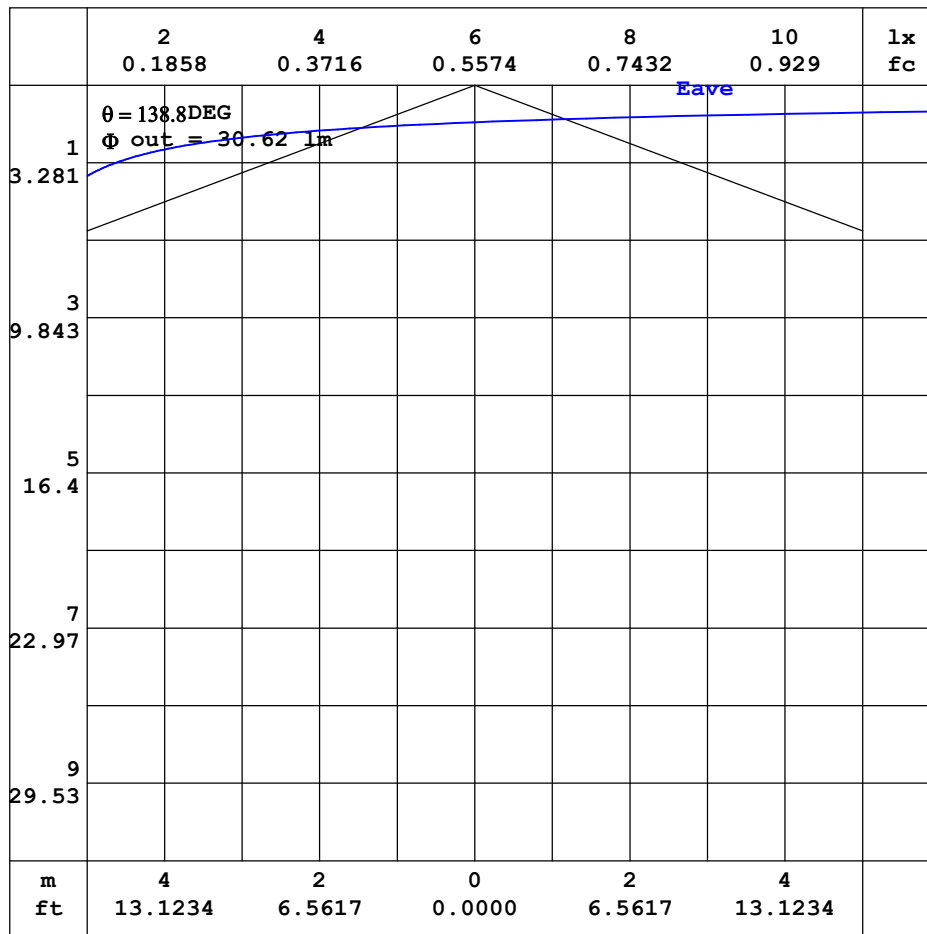


C Range: 0 - 360DEG
C Interval: 30.0DEG
Test Speed: HIGH
Temperature:25.3DEG
Operators:HXJ
Test Date:2022-04-29

γ Range: 0 - 180DEG
 γ Interval: 1.0DEG
Test System:EVERFINE GO-2000B_V1 SYSTEM V2.0.269
Humidity:65.0%
Test Distance:9.200m [K=1.0000]
Remarks:

AAI CURVES

Test:U:24.00V I:0.2370A P:5.688W PF:1.000 Lamp Flux:52.435x1 lm		
NAME: SF18-24V-5050-70-SPI4-3000-B	TYPE: 硅胶	WEIGHT:
DIM.: 16.5mm*16.5mm	SPEC.:	SERIAL No.:2022042901
MFR.: OLYMPIA	SUR.:1*0.0165	PROTECTION ANGLE:



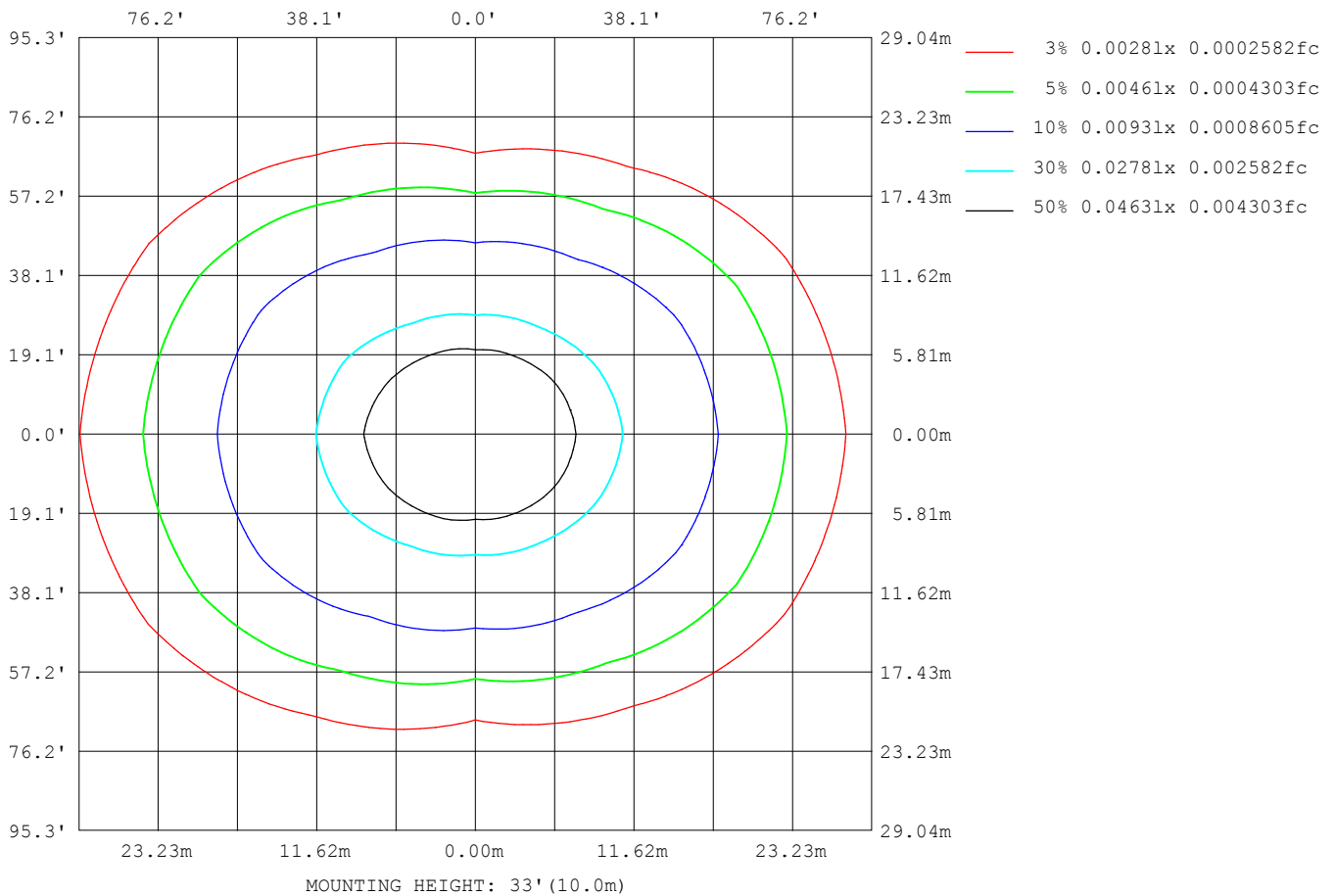
Note:The Curves indicate the illuminated area and the average illumination when the luminaire is at different distance.

C Range: 0 - 360DEG
C Interval: 30.0DEG
Test Speed: HIGH
Temperature:25.3DEG
Operators:HXJ
Test Date:2022-04-29

γ Range: 0 - 180DEG
γ Interval: 1.0DEG
Test System:EVERFINE GO-2000B_V1 SYSTEM V2.0.269
Humidity:65.0%
Test Distance:9.200m [K=1.0000]
Remarks:

ISOLUX DIAGRAM

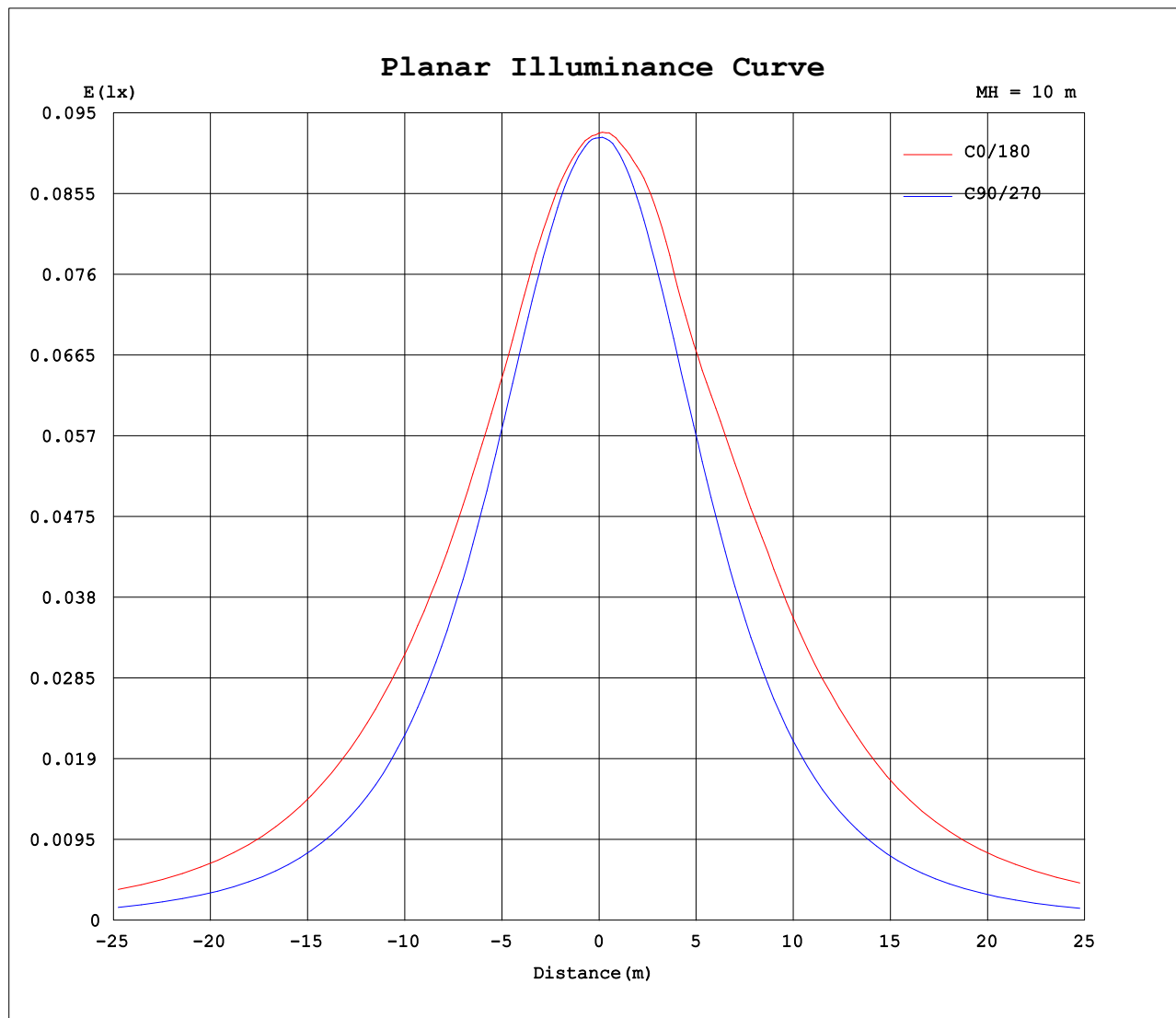
Test:U:24.00V I:0.2370A P:5.688W PF:1.000 Lamp Flux:52.435x1 lm		
NAME: SF18-24V-5050-70-SPI4-3000-B	TYPE: 硅胶	WEIGHT:
DIM.: 16.5mm*16.5mm	SPEC.:	SERIAL No.:2022042901
MFR.: OLYMPIA	SUR.:1*0.0165	PROTECTION ANGLE:



C Range: 0 - 360DEG
C Interval: 30.0DEG
Test Speed: HIGH
Temperature:25.3DEG
Operators:HXJ
Test Date:2022-04-29

γ Range: 0 - 180DEG
 γ Interval: 1.0DEG
Test System:EVERFINE GO-2000B_V1 SYSTEM V2.0.269
Humidity:65.0%
Test Distance:9.200m [K=1.0000]
Remarks:

Planar Illuminance Curve



C Range: 0 - 360DEG
C Interval: 30.0DEG
Test Speed: HIGH
Temperature: 25.3DEG
Operators: HXJ
Test Date: 2022-04-29

γ Range: 0 - 180DEG
 γ Interval: 1.0DEG
Test System: EVERFINE GO-2000B_V1 SYSTEM V2.0.269
Humidity: 65.0%
Test Distance: 9.200m [K=1.0000]
Remarks:

LUMINOUS DISTRIBUTION INTENSITY DATA

Test:U:24.00V I:0.2370A P:5.688W PF:1.000 Lamp Flux:52.435x1 lm		
NAME: SF18-24V-5050-70-SPI4-3000-B	TYPE: 硅胶	WEIGHT:
DIM.: 16.5mm*16.5mm	SPEC.:	SERIAL No.:2022042901
MFR.: OLYMPIA	SUR.:1*0.0165	PROTECTION ANGLE:

Table--1

UNIT: cd

C (DEG) γ (DEG)	0	30	60	90	120	150	180	210	240	270	300	330						
0	9.26	9.21	9.21	9.21	9.20	9.24	9.26	9.21	9.21	9.21	9.20	9.24						
5	9.23	9.18	9.21	9.16	9.20	9.28	9.31	9.23	9.20	9.19	9.12	9.20						
10	9.20	9.14	9.12	9.04	9.19	9.31	9.36	9.24	9.11	9.04	9.01	9.16						
15	9.16	9.06	8.98	8.83	9.07	9.35	9.47	9.28	8.96	8.80	8.84	9.05						
20	9.06	8.96	8.77	8.55	8.93	9.33	9.43	9.28	8.77	8.48	8.62	8.93						
25	8.93	8.78	8.49	8.21	8.77	9.13	9.34	9.13	8.60	8.10	8.30	8.74						
30	8.91	8.56	8.16	7.78	8.52	9.05	9.51	8.98	8.34	7.66	7.96	8.52						
35	8.90	8.47	7.76	7.30	8.09	9.12	9.79	8.99	7.91	7.15	7.54	8.41						
40	8.87	8.24	7.31	6.76	7.61	9.13	10.0	9.03	7.40	6.59	7.08	8.15						
45	8.86	8.09	6.80	6.18	7.10	9.13	10.1	9.04	6.90	5.98	6.56	8.00						
50	8.77	7.93	6.27	5.52	6.59	9.01	10.1	8.97	6.39	5.32	6.01	7.83						
55	8.48	7.64	5.63	4.83	5.99	8.73	9.80	8.71	5.81	4.63	5.38	7.52						
60	7.95	7.19	5.06	4.13	5.47	8.37	9.29	8.33	5.30	3.92	4.79	7.09						
65	7.33	6.67	4.54	3.40	5.02	7.81	8.73	7.76	4.85	3.17	4.28	6.57						
70	6.70	6.05	4.01	2.66	4.47	7.15	8.14	7.12	4.31	2.43	3.75	5.96						
75	6.01	5.27	3.36	1.90	3.87	6.46	7.37	6.45	3.72	1.68	3.14	5.20						
80	5.34	4.55	2.73	1.17	3.23	5.67	6.63	5.68	3.12	1.08	2.53	4.50						
85	4.79	3.99	2.15	0.52	2.66	5.03	6.05	5.06	2.56	0.48	1.97	3.95						
90	4.59	3.78	1.84	0.26	2.37	4.75	5.92	4.74	2.27	0.17	1.71	3.69						
95	4.67	3.92	1.77	0.23	2.29	4.81	5.96	4.77	2.20	0.17	1.65	3.80						
100	4.77	3.96	1.54	0.21	2.20	4.96	5.89	4.89	2.12	0.17	1.38	3.90						
105	4.78	3.65	1.34	0.21	2.14	4.99	5.80	4.95	2.06	0.17	1.29	3.79						
110	4.45	3.35	1.24	0.21	2.12	4.86	5.76	4.90	2.04	0.17	1.28	3.50						
115	4.20	3.08	1.19	0.21	2.08	4.45	5.57	4.49	2.01	0.17	1.27	3.23						
120	3.89	2.79	1.19	0.21	1.92	4.05	5.08	4.08	1.86	0.17	1.19	2.97						
125	3.54	2.48	1.07	0.21	1.71	3.67	4.53	3.72	1.66	0.17	0.99	2.53						
130	3.02	2.25	0.86	0.21	1.48	3.30	4.05	3.33	1.43	0.17	0.82	2.34						
135	2.65	1.74	0.69	0.21	1.25	2.85	3.52	2.89	1.20	0.17	0.65	1.89						
140	2.23	1.37	0.61	0.21	1.05	2.38	2.95	2.41	0.98	0.17	0.53	1.47						
145	1.85	0.99	0.52	0.21	0.85	1.86	2.39	1.91	0.80	0.17	0.44	1.08						
150	1.21	0.75	0.42	0.21	0.66	1.46	1.81	1.50	0.61	0.17	0.35	0.81						
155	1.04	0.56	0.35	0.21	0.51	1.11	1.37	1.15	0.45	0.17	0.27	0.62						
160	0.79	0.42	0.30	0.21	0.41	0.79	0.99	0.82	0.35	0.17	0.23	0.45						
165	0.51	0.27	0.25	0.21	0.33	0.49	0.58	0.54	0.28	0.17	0.22	0.32						
170	0.26	0.22	0.24	0.21	0.29	0.32	0.27	0.36	0.23	0.17	0.22	0.26						
175	0.22	0.21	0.22	0.21	0.27	0.23	0.23	0.28	0.22	0.18	0.21	0.23						
180	0.21	0.21	0.21	0.21	0.23	0.23	0.21	0.23	0.22	0.19	0.22	0.22						

C Range: 0 - 360DEG
C Interval: 30.0DEG
Test Speed: HIGH
Temperature:25.3DEG
Operators:HXJ
Test Date:2022-04-29

γ Range: 0 - 180DEG
γ Interval: 1.0DEG
Test System:EVERFINE GO-2000B_V1 SYSTEM V2.0.269
Humidity:65.0%
Test Distance:9.200m [K=1.0000]
Remarks:

Photometric Data Table [cd]

G/C	0.0	30.0	60.0	90.0	120.0	150.0	180.0	210.0	240.0	270.0
0.0	9.263	9.212	9.207	9.207	9.202	9.242	9.263	9.212	9.207	9.207
3.0	9.242	9.212	9.212	9.197	9.207	9.278	9.303	9.232	9.207	9.212
6.0	9.222	9.177	9.197	9.137	9.199	9.278	9.308	9.234	9.187	9.167
9.0	9.207	9.147	9.142	9.066	9.190	9.293	9.348	9.236	9.122	9.082
12.0	9.192	9.122	9.062	8.961	9.147	9.308	9.413	9.237	9.036	8.956
15.0	9.155	9.056	8.981	8.835	9.072	9.350	9.474	9.278	8.956	8.795
18.0	9.122	9.021	8.861	8.679	8.981	9.356	9.468	9.286	8.860	8.620
21.0	9.042	8.915	8.710	8.493	8.901	9.307	9.383	9.280	8.745	8.414
24.0	8.956	8.805	8.539	8.287	8.810	9.192	9.338	9.177	8.639	8.182
27.0	8.918	8.684	8.369	8.050	8.695	9.074	9.373	9.047	8.513	7.936
30.0	8.910	8.564	8.158	7.784	8.519	9.053	9.514	8.981	8.342	7.660
33.0	8.901	8.518	7.926	7.508	8.268	9.077	9.680	8.989	8.090	7.359
36.0	8.876	8.433	7.685	7.201	7.992	9.132	9.826	8.996	7.809	7.037
39.0	8.860	8.277	7.409	6.874	7.701	9.132	9.972	9.024	7.507	6.710
42.0	8.875	8.162	7.108	6.538	7.404	9.132	10.07	9.046	7.196	6.349
45.0	8.858	8.086	6.801	6.176	7.102	9.132	10.07	9.041	6.899	5.977
48.0	8.841	8.001	6.499	5.778	6.796	9.086	10.08	9.023	6.613	5.590
51.0	8.720	7.885	6.148	5.391	6.465	8.965	10.05	8.931	6.276	5.188
54.0	8.560	7.714	5.751	4.974	6.113	8.805	9.895	8.775	5.919	4.781
57.0	8.299	7.462	5.394	4.562	5.776	8.608	9.603	8.584	5.592	4.353
60.0	7.952	7.191	5.062	4.130	5.469	8.372	9.291	8.328	5.296	3.916
63.0	7.590	6.889	4.746	3.698	5.198	8.030	8.954	8.002	5.030	3.484
66.0	7.203	6.558	4.439	3.256	4.921	7.668	8.628	7.645	4.753	3.037
69.0	6.821	6.186	4.122	2.808	4.590	7.271	8.271	7.248	4.431	2.579
72.0	6.425	5.753	3.761	2.361	4.228	6.869	7.838	6.861	4.084	2.127
75.0	6.012	5.271	3.364	1.904	3.866	6.462	7.366	6.449	3.723	1.680
78.0	5.595	4.829	2.977	1.466	3.484	5.974	6.904	5.972	3.361	1.353
81.0	5.213	4.432	2.600	1.024	3.107	5.527	6.502	5.544	3.004	0.9209
84.0	4.876	4.085	2.243	0.6322	2.760	5.140	6.135	5.168	2.667	0.5737
87.0	4.664	3.834	1.971	0.3413	2.494	4.864	5.925	4.891	2.397	0.3222
90.0	4.586	3.785	1.845	0.2561	2.372	4.749	5.915	4.740	2.266	0.1709
93.0	4.622	3.855	1.797	0.2325	2.327	4.765	5.947	4.759	2.226	0.1709
96.0	4.689	3.929	1.750	0.2218	2.277	4.830	5.970	4.778	2.191	0.1709
99.0	4.754	3.953	1.579	0.2111	2.222	4.925	5.905	4.855	2.126	0.1709
102.0	4.794	3.930	1.483	0.2111	2.171	4.972	5.830	4.940	2.080	0.1709
105.0	4.785	3.648	1.343	0.2111	2.136	4.990	5.799	4.955	2.059	0.1709
108.0	4.504	3.442	1.307	0.2111	2.121	4.940	5.777	4.922	2.045	0.1709
111.0	4.418	3.311	1.202	0.2111	2.115	4.804	5.754	4.840	2.038	0.1709
114.0	4.247	3.160	1.181	0.2111	2.091	4.542	5.643	4.579	2.030	0.1709
117.0	4.092	2.990	1.222	0.2111	2.021	4.241	5.391	4.298	1.960	0.1709
120.0	3.886	2.794	1.194	0.2111	1.915	4.045	5.085	4.077	1.859	0.1709
123.0	3.695	2.583	1.166	0.2111	1.810	3.824	4.738	3.870	1.749	0.1709
126.0	3.449	2.437	1.026	0.2111	1.664	3.608	4.441	3.649	1.608	0.1709
129.0	3.107	2.286	0.8951	0.2111	1.528	3.367	4.130	3.413	1.472	0.1709
132.0	2.861	2.110	0.7895	0.2111	1.383	3.120	3.824	3.157	1.331	0.1709
135.0	2.655	1.738	0.6939	0.2111	1.247	2.854	3.517	2.891	1.196	0.1709
138.0	2.383	1.472	0.6534	0.2111	1.121	2.567	3.180	2.599	1.075	0.1709
141.0	2.172	1.321	0.5883	0.2111	1.006	2.276	2.843	2.303	0.9445	0.1709
144.0	1.946	1.095	0.5430	0.2111	0.9000	1.954	2.507	2.006	0.8389	0.1709
147.0	1.675	0.9140	0.4877	0.2111	0.7794	1.683	2.150	1.730	0.7182	0.1709
150.0	1.209	0.7534	0.4224	0.2111	0.6638	1.457	1.813	1.503	0.6076	0.1709
153.0	1.070	0.6328	0.3721	0.2111	0.5583	1.236	1.527	1.292	0.5220	0.1709
156.0	0.9906	0.5376	0.3369	0.2111	0.4877	1.050	1.291	1.081	0.4270	0.1709
159.0	0.8599	0.4420	0.3068	0.2111	0.4324	0.8488	1.065	0.8901	0.3617	0.1709
162.0	0.6792	0.3516	0.2816	0.2111	0.3772	0.6527	0.8280	0.6892	0.3064	0.1709
165.0	0.5132	0.2714	0.2514	0.2111	0.3269	0.4922	0.5823	0.5382	0.2763	0.1709
168.0	0.3724	0.2261	0.2412	0.2111	0.2966	0.3717	0.4364	0.4224	0.2361	0.1709
171.0	0.2464	0.2211	0.2312	0.2111	0.2815	0.2814	0.2581	0.3319	0.2311	0.1709
174.0	0.2262	0.2161	0.2222	0.2111	0.2715	0.2411	0.2346	0.2866	0.2261	0.1709
177.0	0.2161	0.2111	0.2161	0.2111	0.2564	0.2262	0.2111	0.2714	0.2211	0.1759
180.0	0.2061	0.2111	0.2111	0.2111	0.2262	0.2262	0.2111	0.2262	0.2211	0.1910
G/C	300.0	330.0								
0.0	9.202	9.242								
3.0	9.152	9.212								
6.0	9.116	9.182								
9.0	9.036	9.167								
12.0	8.945	9.132								
15.0	8.845	9.051								
18.0	8.719	8.996								
21.0	8.553	8.886								
24.0	8.362	8.780								
27.0	8.171	8.630								
30.0	7.960	8.519								

C Range: 0 - 360DEG
 C Interval: 30.0DEG
 Test Speed: HIGH
 Temperature: 25.3DEG
 Operators: HXJ
 Test Date: 2022-04-29

γ Range: 0 - 180DEG
 γ Interval: 1.0DEG
 Test System: EVERFINE GO-2000B_V1 SYSTEM V2.0.269
 Humidity: 65.0%
 Test Distance: 9.200m [K=1.0000]
 Remarks:

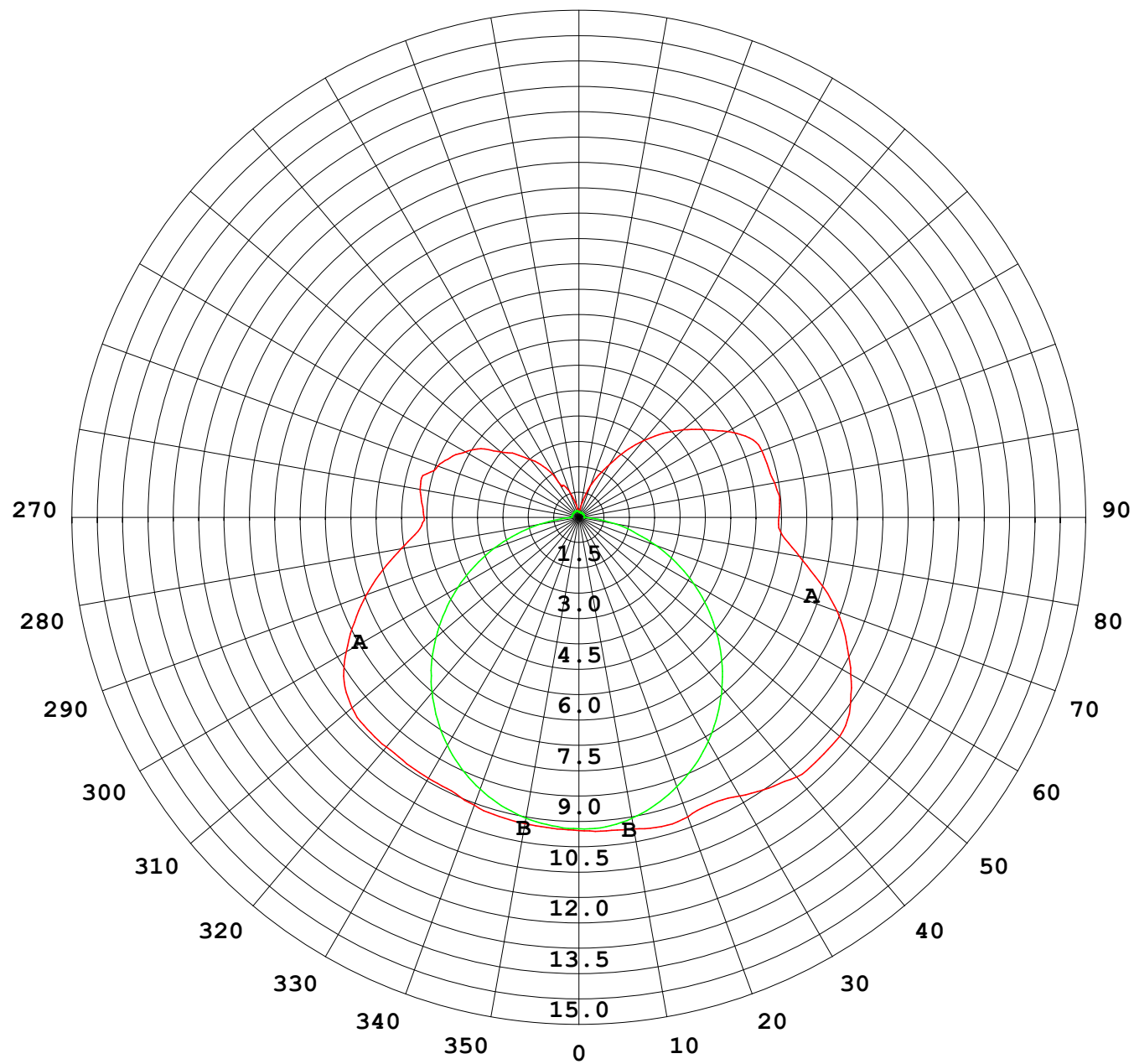
Photometric Data Table [cd]

33.0	7.714	8.458
36.0	7.457	8.363
39.0	7.191	8.203
42.0	6.869	8.077
45.0	6.562	8.001
48.0	6.246	7.916
51.0	5.894	7.780
54.0	5.502	7.600
57.0	5.135	7.353
60.0	4.793	7.087
63.0	4.477	6.796
66.0	4.180	6.454
69.0	3.864	6.082
72.0	3.512	5.675
75.0	3.140	5.203
78.0	2.763	4.761
81.0	2.426	4.368
84.0	2.079	4.042
87.0	1.799	3.800
90.0	1.709	3.694
93.0	1.672	3.739
96.0	1.537	3.829
99.0	1.412	3.910
102.0	1.337	3.868
105.0	1.289	3.795
108.0	1.282	3.654
111.0	1.275	3.448
114.0	1.268	3.297
117.0	1.261	3.116
120.0	1.186	2.966
123.0	1.050	2.700
126.0	0.9496	2.473
129.0	0.8440	2.373
132.0	0.7534	2.172
135.0	0.6530	1.885
138.0	0.5926	1.619
141.0	0.5126	1.388
144.0	0.4621	1.151
147.0	0.4069	0.9804
150.0	0.3514	0.8145
153.0	0.2863	0.6939
156.0	0.2664	0.5883
159.0	0.2311	0.4878
162.0	0.2278	0.3922
165.0	0.2244	0.3168
168.0	0.2211	0.2765
171.0	0.2178	0.2463
174.0	0.2144	0.2312
177.0	0.2111	0.2212
180.0	0.2211	0.2161

C Range: 0 - 360DEG
C Interval: 30.0DEG
Test Speed: HIGH
Temperature: 25.3DEG
Operators: HXJ
Test Date: 2022-04-29

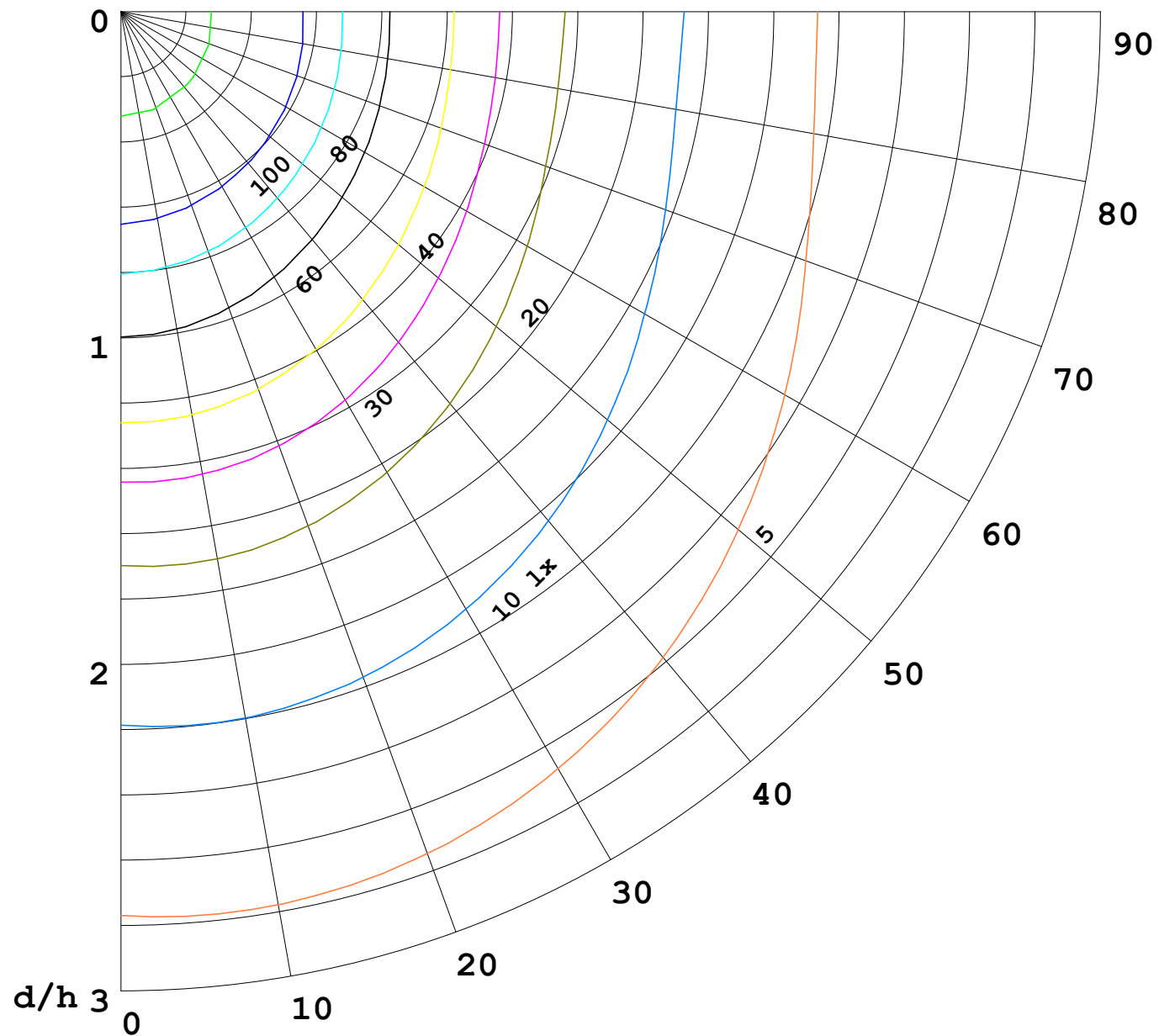
γ Range: 0 - 180DEG
γ Interval: 1.0DEG
Test System: EVERFINE GO-2000B_V1 SYSTEM V2.0.269
Humidity: 65.0%
Test Distance: 9.200m [K=1.0000]
Remarks:

I (cd)



1000 lm

$\kappa = 1$



F = 5000 lm
 K = 0.7
 Hcc = 0.0 m
 Hfc = 0.0 m
 Eave = 100 lx

	Pcc	Pw	Pfc
—	70	50	30
—	50	30	20

