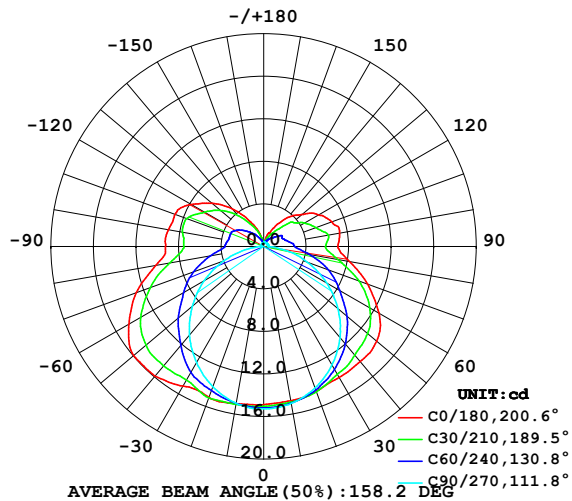


LUMINAIRE PHOTOMETRIC TEST REPORT

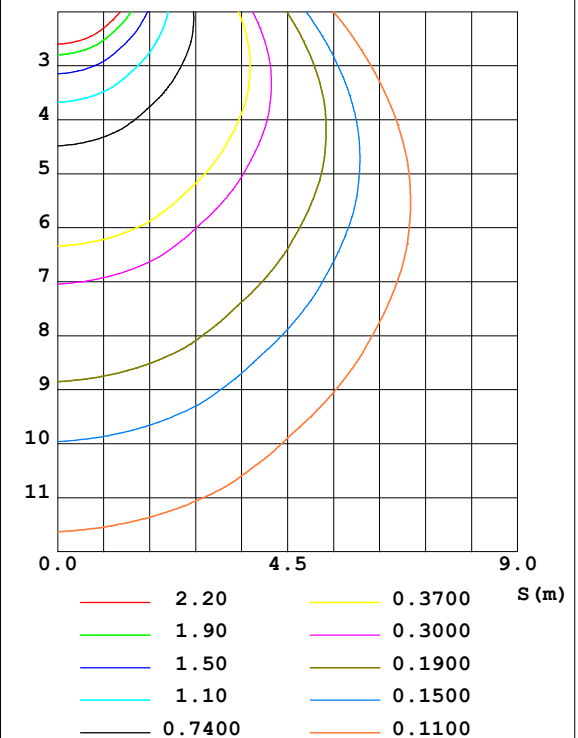
Test:U:24.00V I:0.2364A P:5.673W PF:1.000 Lamp Flux:84.7289x1 lm		
NAME: SF18-24V-5050-70-SPI4-3000-R	TYPE: 硅胶	WEIGHT:
DIM.: 16.5mm*16.5mm	SPEC.:	SERIAL No.:2022042901
MFR.: OLYMPIA	SUR.:1*0.0165	PROTECTION ANGLE:

DATA OF LAMP		PHOTOMETRIC DATA Eff: 14.94 lm/W			
MODEL	5050	I _{max} (cd)	15.97	S/MH (C0/180)	1.47
NOMINAL POWER (W)	4.5	LOR (%)	100.0	S/MH (C90/270)	1.25
RATED VOLTAGE (V)	24	TOTAL FLUX (lm)	84.732	η UP, DN (C0-180)	12.2, 37.1
NOMINAL FLUX (lm)	84.7289	CIE CLASS	SEMI-D.	η UP, DN (C180-360)	13.0, 37.6
LAMPS INSIDE	1	η up (%)	25.3	CIBSE SHR NOM	1.50
TEST VOLTAGE (V)	24.0	η down (%)	74.7	CIBSE SHR MAX	1.55

LUMINOUS INTENSITY DISTRIBUTION DIAGRAM



C0 PLANE ISOLUX DIAGRAM (UNIT:lx)



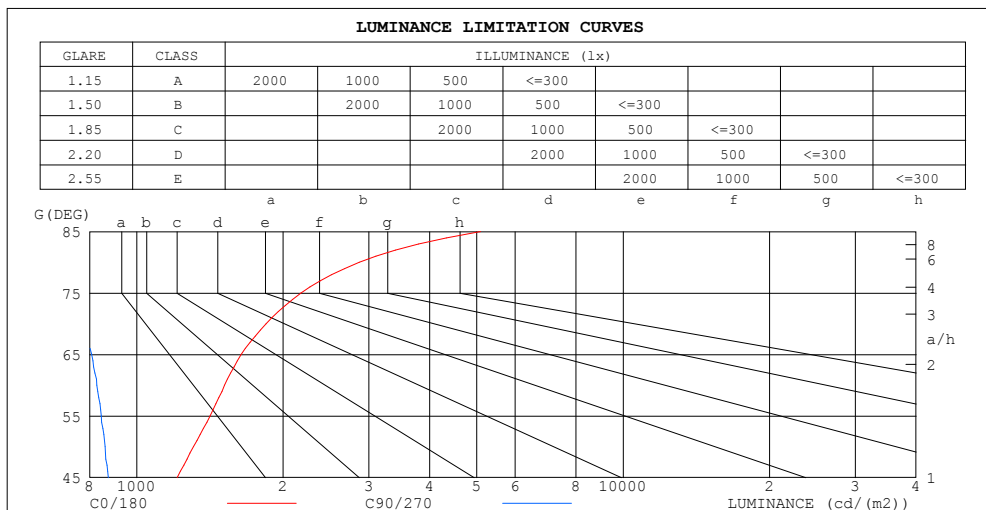
C Range: 0 - 360DEG
C Interval: 30.0DEG
Test Speed: HIGH
Temperature: 25.3DEG
Operators: HXJ
Test Date: 2022-04-29

γ Range: 0 - 180DEG
γ Interval: 1.0DEG
Test System: EVERFINE GO-2000B_V1 SYSTEM V2.0.269
Humidity: 65.0%
Test Distance: 9.200m [K=1.0000]
Remarks:

ZONAL FLUX DIAGRAM
AND LUMINANCE LIMITATION CURVES

ZONAL FLUX DIAGRAM:

γ	C0	C45	C90	C135	C180	C225	C270	C315	γ	Φ zone	Φ total	%lum, lamp
10	14.73	14.91	14.99	15.41	15.00	15.03	14.97	15.15	0- 10	1.444	1.444	1.7,1.7
20	14.48	14.45	14.15	15.20	15.10	14.78	14.02	14.62	10- 20	4.214	5.657	6.68,6.68
30	14.22	13.61	12.86	14.57	15.17	14.11	12.63	13.70	20- 30	6.595	12.25	14.5,14.5
40	14.13	12.64	11.19	13.87	15.93	13.39	10.87	12.67	30- 40	8.491	20.74	24.5,24.5
50	13.87	11.50	9.130	12.90	15.97	12.47	8.792	11.46	40- 50	9.742	30.49	36,36
60	12.51	9.881	6.833	11.42	14.64	11.02	6.485	9.800	50- 60	10.08	40.56	47.9,47.9
70	10.41	8.026	4.405	9.514	12.75	9.187	4.008	7.920	60- 70	9.340	49.90	58.9,58.9
80	8.209	5.747	2.003	7.242	10.30	7.023	1.630	5.651	70- 80	7.677	57.58	68,68
90	6.981	4.373	0.4523	5.770	9.239	5.592	0.2996	4.312	80- 90	5.740	63.32	74.7,74.7
100	7.257	4.307	0.4383	5.808	9.101	5.588	0.2865	4.249	90-100	5.196	68.52	80.9,80.9
110	6.821	3.648	0.4326	5.662	8.870	5.537	0.2865	3.847	100-110	4.901	73.42	86.6,86.7
120	5.972	3.221	0.3970	4.862	7.904	4.747	0.2865	3.355	110-120	4.197	77.62	91.6,91.6
130	4.681	2.490	0.3970	3.900	6.320	3.805	0.2915	2.560	120-130	3.156	80.77	95.3,95.3
140	3.580	1.588	0.3970	2.827	4.657	2.732	0.3166	1.674	130-140	2.069	82.84	97.8,97.8
150	2.188	1.002	0.3972	1.791	2.888	1.739	0.3360	1.018	140-150	1.140	83.98	99.1,99.1
160	1.338	0.6381	0.3990	1.060	1.622	1.008	0.3548	0.6208	150-160	0.5220	84.50	99.7,99.7
170	0.4626	0.4272	0.4008	0.5627	0.4671	0.5421	0.3604	0.4288	160-170	0.1877	84.69	100,100
180	0.3719	0.3870	0.4021	0.4121	0.3870	0.4196	0.3669	0.3945	170-180	0.0415	84.73	100,100
DEG	LUMINOUS INTENSITY:cd									UNIT:lm		



LUMINANCE cd/(m2)		
G (DEG)	C0/180	C90/270
85	5093	652
80	2865	699
75	2178	770
70	1844	781
65	1639	808
60	1516	828
55	1415	846
50	1308	861
45	1210	874

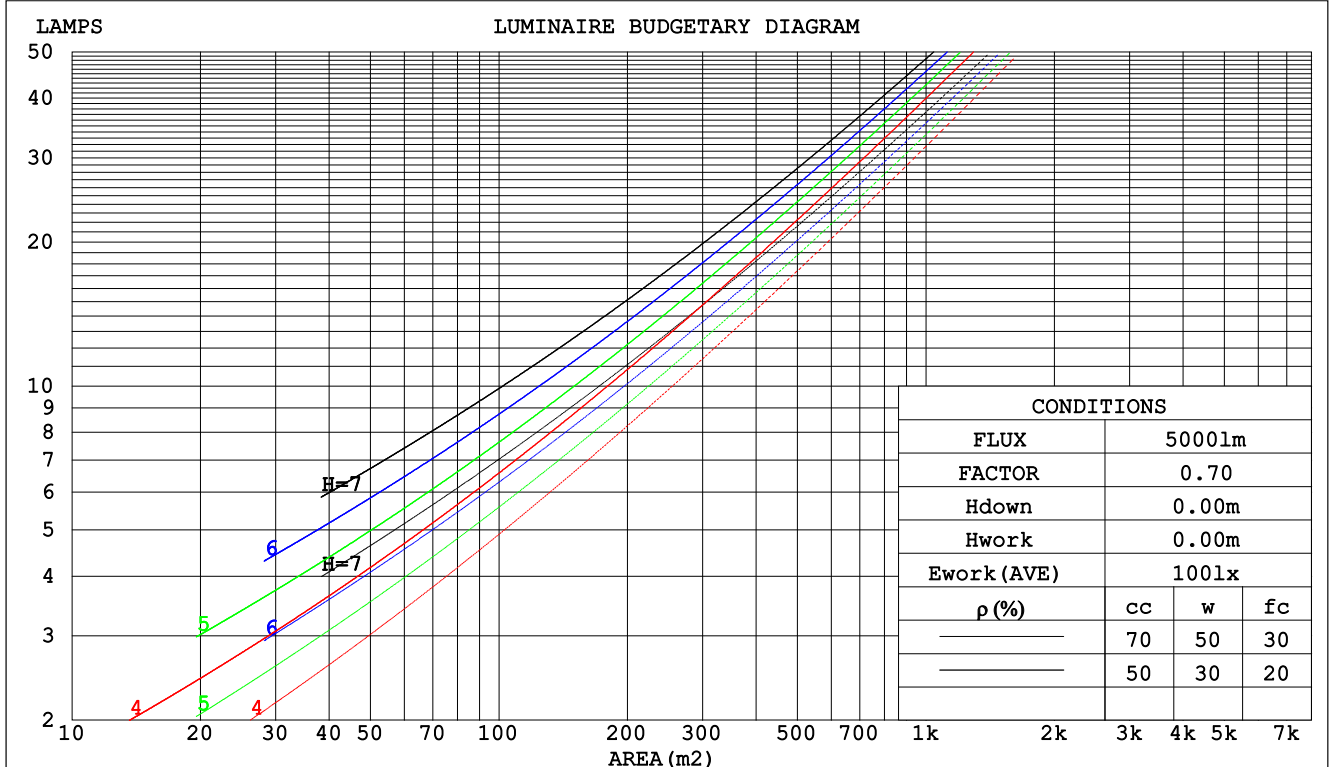
C Range: 0 - 360DEG
C Interval: 30.0DEG
Test Speed: HIGH
Temperature:25.3DEG
Operators:HXJ
Test Date:2022-04-29

γ Range: 0 - 180DEG
 γ Interval: 1.0DEG
Test System:EVERFINE GO-2000B_V1 SYSTEM V2.0.269
Humidity:65.0%
Test Distance:9.200m [K=1.0000]
Remarks:

CU AND LUMINAIRE BUDGETARY ESTIMATE DIAGRAM

Test:U:24.00V I:0.2364A P:5.673W PF:1.000 Lamp Flux:84.7289x1 lm		
NAME: SF18-24V-5050-70-SPI4-3000-R	TYPE: 硅胶	WEIGHT:
DIM.: 16.5mm*16.5mm	SPEC.:	SERIAL No.:2022042901
MFR.: OLYMPIA	SUR.:1*0.0165	PROTECTION ANGLE:

pcc	80%			70%			50%			30%			10%			0
pw	50%	30%	10%	50%	30%	10%	50%	30%	10%	50%	30%	10%	50%	30%	10%	0
pfc	20%			20%			20%			20%			20%			0
RCR	RCR:Room Cavity Ratio						Coefficients of Utilization(CU)									
0.0	1.13	1.13	1.13	1.07	1.07	1.07	.97	.97	.97	.88	.88	.88	.79	.79	.79	.75
1.0	.94	.89	.84	.89	.85	.80	.80	.77	.73	.72	.69	.67	.65	.62	.60	.56
2.0	.80	.73	.66	.76	.69	.63	.69	.63	.58	.61	.57	.53	.55	.51	.48	.45
3.0	.70	.61	.54	.66	.58	.51	.59	.53	.47	.53	.48	.43	.48	.43	.39	.36
4.0	.61	.52	.44	.58	.49	.43	.52	.45	.39	.47	.41	.36	.42	.37	.33	.30
5.0	.54	.45	.38	.51	.43	.36	.46	.39	.33	.42	.36	.31	.37	.32	.28	.25
6.0	.48	.39	.32	.46	.37	.31	.41	.34	.29	.37	.31	.27	.34	.28	.24	.22
7.0	.43	.34	.28	.41	.33	.27	.37	.30	.25	.34	.28	.23	.30	.25	.21	.19
8.0	.39	.31	.25	.38	.29	.24	.34	.27	.22	.31	.25	.21	.28	.23	.19	.17
9.0	.36	.28	.22	.34	.26	.21	.31	.24	.20	.28	.23	.18	.26	.21	.17	.15
10.0	.33	.25	.20	.31	.24	.19	.29	.22	.18	.26	.21	.17	.24	.19	.15	.13



C Range: 0 - 360DEG
C Interval: 30.0DEG
Test Speed: HIGH
Temperature:25.3DEG
Operators:HXJ
Test Date:2022-04-29

γ Range: 0 - 180DEG
γ Interval: 1.0DEG
Test System:EVERFINE GO-2000B_V1 SYSTEM V2.0.269
Humidity:65.0%
Test Distance:9.200m [K=1.0000]
Remarks:

WEC AND CCEC

Test:U:24.00V I:0.2364A P:5.673W PF:1.000 Lamp Flux:84.7289x1 lm					
NAME: SF18-24V-5050-70-SPI4-3000-R			TYPE: 硅胶		WEIGHT:
DIM.: 16.5mm*16.5mm			SPEC.:		SERIAL No.:2022042901
MFR.: OLYMPIA			SUR.:1*0.0165		PROTECTION ANGLE:

pcc	80%			70%			50%			30%			10%			0	
pw	50%	30%	10%	50%	30%	10%	50%	30%	10%	50%	30%	10%	50%	30%	10%	0	
pfc	20%			20%			20%			20%			20%			0	
RCR	RCR:Room Cavity Ratio						Wall Exitance Coefficients(WEC)										
0.0																	
1.0	.378	.215	.068	.364	.207	.066	.336	.193	.061	.310	.179	.057	.286	.166	.054		
2.0	.329	.180	.055	.316	.174	.054	.291	.162	.050	.267	.150	.047	.246	.139	.044		
3.0	.293	.156	.047	.281	.150	.045	.258	.140	.042	.237	.130	.040	.217	.120	.037		
4.0	.264	.137	.040	.253	.132	.039	.232	.123	.037	.213	.114	.034	.195	.106	.032		
5.0	.240	.123	.035	.230	.118	.034	.211	.110	.032	.193	.102	.030	.177	.094	.028		
6.0	.220	.110	.032	.211	.107	.031	.194	.099	.029	.177	.092	.027	.162	.085	.025		
7.0	.203	.100	.028	.195	.097	.028	.179	.090	.026	.164	.084	.024	.149	.078	.023		
8.0	.188	.092	.026	.181	.089	.025	.166	.083	.024	.152	.077	.022	.139	.071	.021		
9.0	.176	.085	.024	.168	.082	.023	.155	.077	.022	.142	.071	.020	.130	.066	.019		
10.0	.164	.079	.022	.158	.076	.021	.145	.071	.020	.133	.066	.019	.122	.061	.018		

pcc	80%			70%			50%			30%			10%			0
pw	50%	30%	10%	50%	30%	10%	50%	30%	10%	50%	30%	10%	50%	30%	10%	0
pfc	20%			20%			20%			20%			20%			0
RCR	RCR:Room Cavity Ratio						Ceiling Cavity Exitance Coefficients(CCEC)									
0.0	.383	.383	.383	.327	.327	.327	.223	.223	.223	.128	.128	.128	.041	.041	.041	
1.0	.379	.350	.323	.324	.300	.278	.222	.206	.192	.128	.119	.112	.041	.038	.036	
2.0	.373	.327	.289	.319	.282	.250	.219	.195	.174	.126	.113	.102	.040	.037	.033	
3.0	.365	.311	.267	.313	.268	.232	.215	.186	.163	.124	.109	.096	.040	.035	.031	
4.0	.358	.299	.253	.307	.258	.220	.211	.180	.155	.122	.105	.092	.039	.034	.030	
5.0	.350	.289	.244	.301	.250	.212	.207	.175	.150	.120	.103	.089	.039	.033	.029	
6.0	.343	.281	.237	.295	.244	.206	.203	.170	.146	.118	.100	.087	.038	.033	.029	
7.0	.336	.275	.232	.289	.238	.202	.200	.167	.143	.116	.098	.085	.038	.032	.028	
8.0	.330	.269	.228	.284	.234	.199	.196	.164	.141	.114	.097	.084	.037	.032	.028	
9.0	.323	.265	.225	.279	.230	.196	.193	.161	.139	.112	.095	.083	.036	.031	.028	
10.0	.318	.261	.222	.274	.226	.194	.190	.159	.138	.111	.094	.082	.036	.031	.027	

C Range: 0 - 360DEG
C Interval: 30.0DEG
Test Speed: HIGH
Temperature:25.3DEG
Operators:HXJ
Test Date:2022-04-29

γ Range: 0 - 180DEG
γ Interval: 1.0DEG
Test System:EVERFINE GO-2000B_V1 SYSTEM V2.0.269
Humidity:65.0%
Test Distance:9.200m [K=1.0000]
Remarks:

Uncorrected UGR Table

Test:U:24.00V I:0.2364A P:5.673W PF:1.000 Lamp Flux:84.7289x1 lm										
NAME: SF18-24V-5050-70-SPI4-3000-R					TYPE: 硅胶			WEIGHT:		
DIM.: 16.5mm*16.5mm					SPEC.:			SERIAL No.:2022042901		
MFR.: OLYMPIA					SUR.:1*0.0165			PROTECTION ANGLE:		
ceiling/cavity	0.7	0.7	0.5	0.5	0.3	0.7	0.7	0.5	0.5	0.3
walls	0.5	0.3	0.5	0.3	0.3	0.5	0.3	0.5	0.3	0.3
working plane	0.2	0.2	0.2	0.2	0.2	0.2	0.2	0.2	0.2	0.2
Room dimensions	Viewed crosswise					Viewed endwise				
x = 2H y = 2H	12.9	14.2	13.5	14.8	15.5	10.3	11.6	10.9	12.2	12.9
3H	15.4	16.6	16.1	17.3	18.0	12.0	13.1	12.6	13.8	14.5
4H	16.8	17.9	17.4	18.6	19.3	12.7	13.8	13.3	14.4	15.2
6H	18.2	19.3	18.9	19.9	20.7	13.2	14.3	13.9	14.9	15.7
8H	19.0	20.0	19.7	20.7	21.5	13.4	14.4	14.1	15.1	15.9
12H	19.9	20.9	20.6	21.6	22.4	13.5	14.5	14.2	15.2	16.0
4H 2H	13.4	14.5	14.0	15.2	15.9	11.5	12.7	12.2	13.3	14.1
3H	16.2	17.2	16.9	17.9	18.7	13.4	14.4	14.1	15.1	15.9
4H	17.7	18.6	18.4	19.3	20.2	14.3	15.1	15.0	15.9	16.7
6H	19.3	20.1	20.1	20.9	21.7	15.0	15.8	15.7	16.5	17.4
8H	20.2	21.0	21.0	21.7	22.6	15.2	16.0	16.0	16.7	17.6
12H	21.3	22.0	22.0	22.7	23.7	15.4	16.1	16.2	16.9	17.8
8H 4H	18.0	18.7	18.7	19.5	20.4	15.2	16.0	16.0	16.7	17.6
6H	19.9	20.5	20.7	21.3	22.2	16.2	16.9	17.0	17.7	18.6
8H	21.0	21.6	21.8	22.4	23.3	16.7	17.2	17.5	18.0	19.0
12H	22.3	22.8	23.1	23.6	24.6	17.1	17.5	17.9	18.4	19.3
12H 4H	18.0	18.7	18.8	19.4	20.4	15.5	16.2	16.3	17.0	17.9
6H	20.0	20.6	20.8	21.4	22.3	16.7	17.3	17.5	18.1	19.0
8H	21.2	21.7	22.0	22.5	23.5	17.3	17.8	18.1	18.6	19.6
Variations with the observer position at spacings:										
S = 1.0H	+ 0.1 / - 0.1					+ 0.1 / - 0.1				
1.5H	+ 0.2 / - 0.3					+ 0.2 / - 0.3				
2.0H	+ 0.2 / - 0.3					+ 0.2 / - 0.4				

CIE Pub.117 Corrected 84.73 lm Total Lamp Luminous Flux. (8log(F/F0) = -8.6)

C Range: 0 - 360DEG
C Interval: 30.0DEG
Test Speed: HIGH
Temperature:25.3DEG
Operators:HXJ
Test Date:2022-04-29

γ Range: 0 - 180DEG
γ Interval: 1.0DEG
Test System:EVERFINE GO-2000B_V1 SYSTEM V2.0.269
Humidity:65.0%
Test Distance:9.200m [K=1.0000]
Remarks:

UTILIZATION FACTORS TABLE

Test:U:24.00V I:0.2364A P:5.673W PF:1.000 Lamp Flux:84.7289x1 lm		
NAME: SF18-24V-5050-70-SPI4-3000-R	TYPE: 硅胶	WEIGHT:
DIM.: 16.5mm*16.5mm	SPEC.:	SERIAL No.:2022042901
MFR.: OLYMPIA	SUR.:1*0.0165	PROTECTION ANGLE:

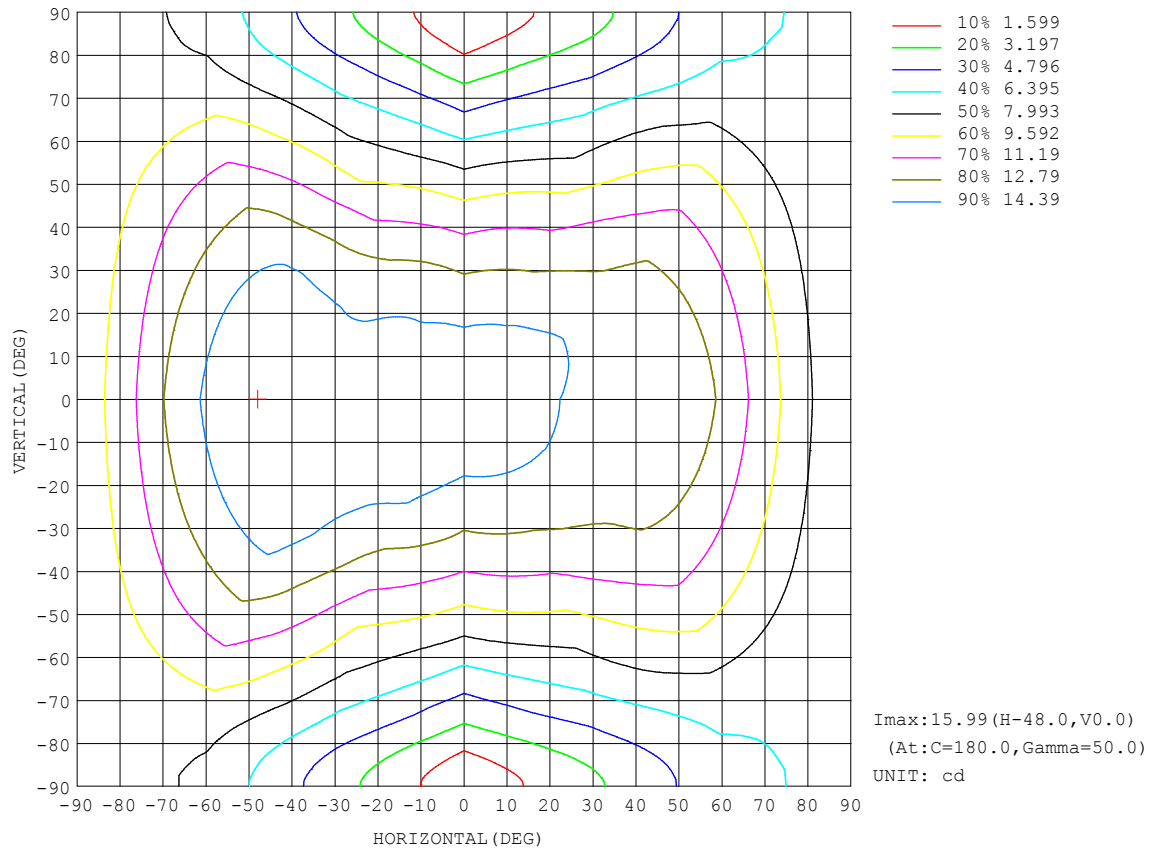
REFLECTANCE										
Ceiling	0.8	0.8	0.8	0.7	0.7	0.7	0.5	0.5	0.5	0
Walls	0.7	0.5	0.3	0.7	0.5	0.3	0.7	0.5	0.3	0
Working plane	0.2	0.2	0.2	0.2	0.2	0.2	0.2	0.2	0.2	0
ROOM INDEX	UTILIZATION FACTORS (PERCENT) $k(RI) \times RCR = 5$									
$k = 0.60$	45	33	25	44	32	25	41	31	24	18
0.80	54	41	33	52	40	32	49	38	31	23
1.00	62	49	40	60	47	39	55	47	38	29
1.25	69	56	47	66	54	46	61	51	44	34
1.50	74	62	53	71	60	52	65	56	49	37
2.00	82	70	62	78	68	60	71	63	56	43
2.50	86	76	68	82	73	66	75	67	61	47
3.00	90	81	73	86	77	71	78	71	66	50
4.00	95	87	80	90	83	77	82	76	71	55
5.00	98	91	85	93	87	82	84	80	75	58
ROOM INDEX	UF(total)									Direct
According to DIN EN 13032-2 2004			Suspended					SHRNOM = 1.25		

C Range: 0 - 360DEG
C Interval: 30.0DEG
Test Speed: HIGH
Temperature:25.3DEG
Operators:HXJ
Test Date:2022-04-29

γ Range: 0 - 180DEG
 γ Interval: 1.0DEG
Test System:EVERFINE GO-2000B_V1 SYSTEM V2.0.269
Humidity:65.0%
Test Distance:9.200m [K=1.0000]
Remarks:

ISOCANDELA DIAGRAM

Test:U:24.00V I:0.2364A P:5.673W PF:1.000 Lamp Flux:84.7289x1 lm		
NAME: SF18-24V-5050-70-SPI4-3000-R	TYPE: 硅胶	WEIGHT:
DIM.: 16.5mm*16.5mm	SPEC.:	SERIAL No.:2022042901
MFR.: OLYMPIA	SUR.:1*0.0165	PROTECTION ANGLE:

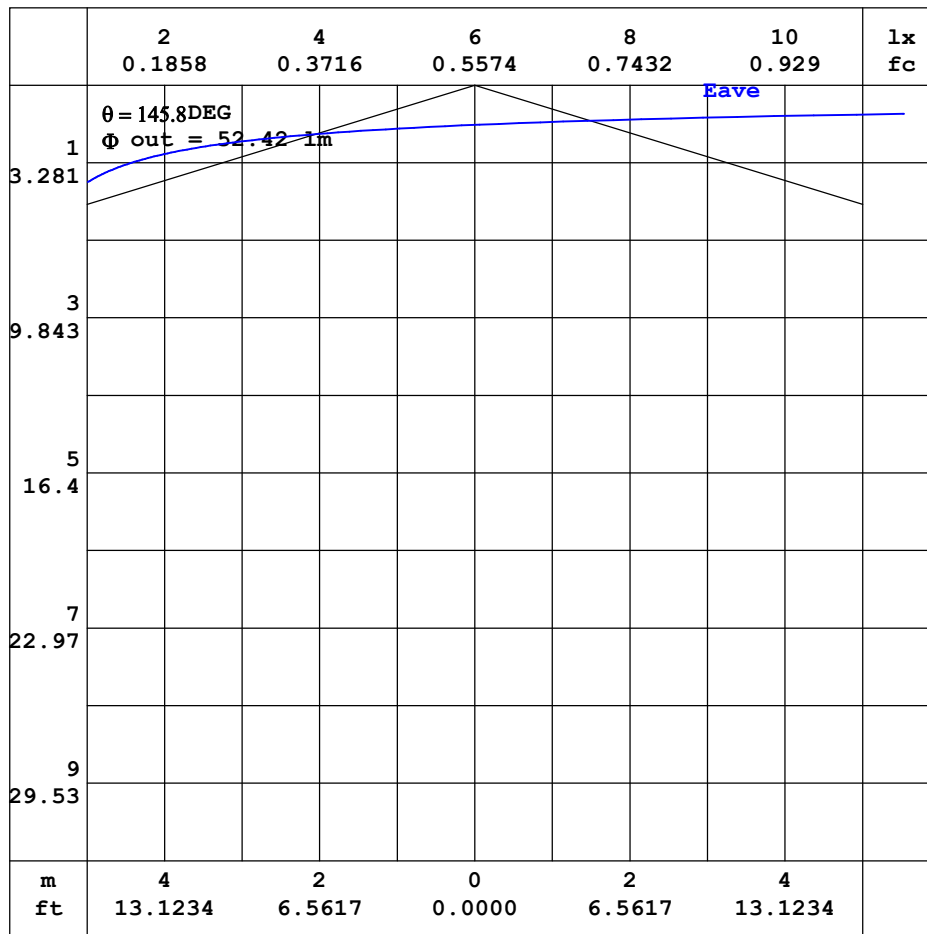


C Range: 0 - 360DEG
C Interval: 30.0DEG
Test Speed: HIGH
Temperature:25.3DEG
Operators:HXJ
Test Date:2022-04-29

γ Range: 0 - 180DEG
 γ Interval: 1.0DEG
Test System:EVERFINE GO-2000B_V1 SYSTEM V2.0.269
Humidity:65.0%
Test Distance:9.200m [K=1.0000]
Remarks:

AAI CURVES

Test:U:24.00V I:0.2364A P:5.673W PF:1.000 Lamp Flux:84.7289x1 lm		
NAME: SF18-24V-5050-70-SPI4-3000-R	TYPE: 硅胶	WEIGHT:
DIM.: 16.5mm*16.5mm	SPEC.:	SERIAL No.:2022042901
MFR.: OLYMPIA	SUR.:1*0.0165	PROTECTION ANGLE:



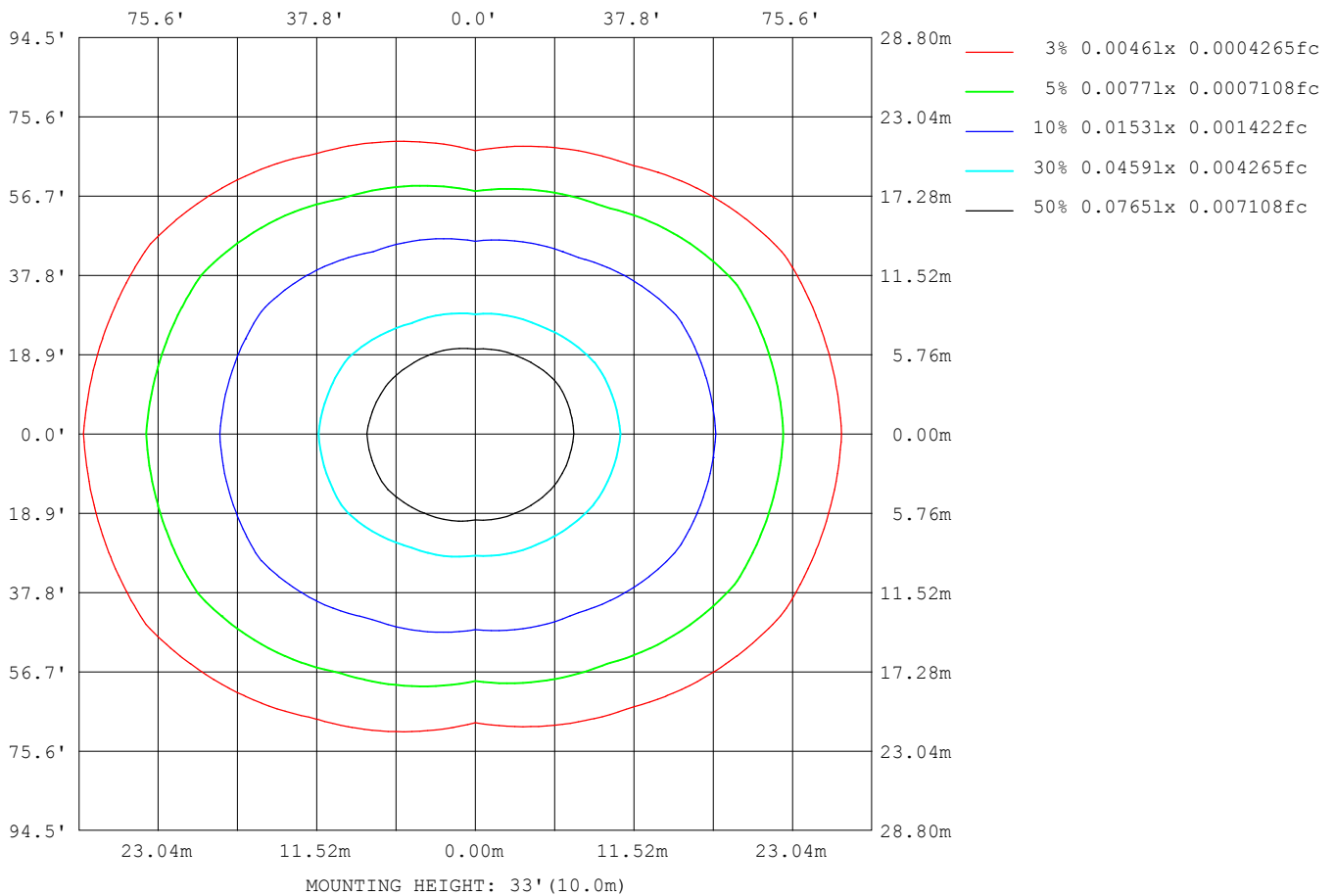
Note: The Curves indicate the illuminated area and the average illumination when the luminaire is at different distance.

C Range: 0 - 360 DEG
C Interval: 30.0 DEG
Test Speed: HIGH
Temperature: 25.3 DEG
Operators: HXJ
Test Date: 2022-04-29

γ Range: 0 - 180 DEG
γ Interval: 1.0 DEG
Test System: EVERFINE GO-2000B_V1 SYSTEM V2.0.269
Humidity: 65.0%
Test Distance: 9.200m [K=1.0000]
Remarks:

ISOLUX DIAGRAM

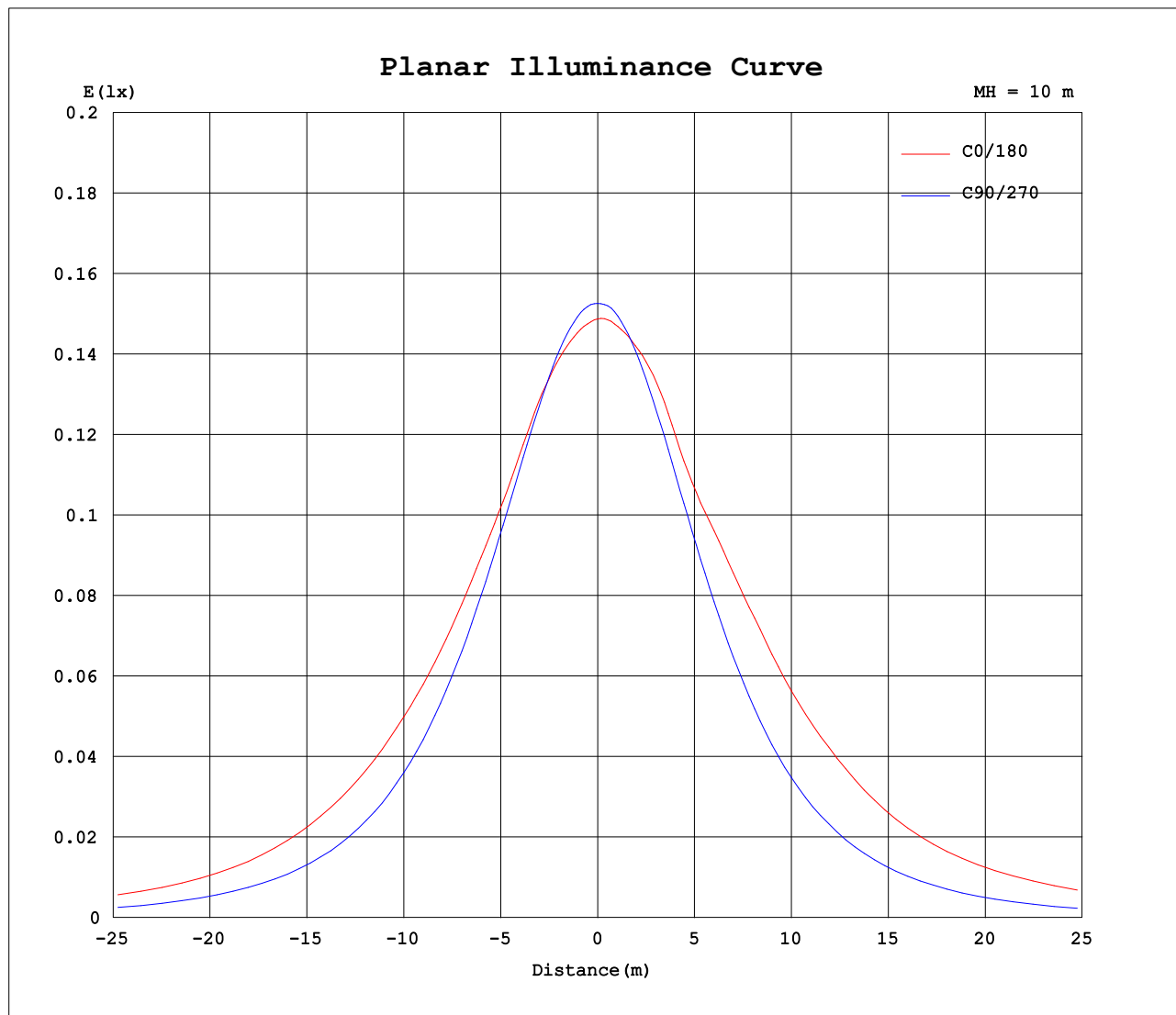
Test:U:24.00V I:0.2364A P:5.673W PF:1.000 Lamp Flux:84.7289x1 lm		
NAME: SF18-24V-5050-70-SPI4-3000-R	TYPE: 硅胶	WEIGHT:
DIM.: 16.5mm*16.5mm	SPEC.:	SERIAL No.:2022042901
MFR.: OLYMPIA	SUR.:1*0.0165	PROTECTION ANGLE:



C Range: 0 - 360DEG
C Interval: 30.0DEG
Test Speed: HIGH
Temperature:25.3DEG
Operators:HXJ
Test Date:2022-04-29

γ Range: 0 - 180DEG
 γ Interval: 1.0DEG
Test System:EVERFINE GO-2000B_V1 SYSTEM V2.0.269
Humidity:65.0%
Test Distance:9.200m [K=1.0000]
Remarks:

Planar Illuminance Curve



C Range: 0 - 360DEG
C Interval: 30.0DEG
Test Speed: HIGH
Temperature: 25.3DEG
Operators: HXJ
Test Date: 2022-04-29

γ Range: 0 - 180DEG
 γ Interval: 1.0DEG
Test System: EVERFINE GO-2000B_V1 SYSTEM V2.0.269
Humidity: 65.0%
Test Distance: 9.200m [K=1.0000]
Remarks:

LUMINOUS DISTRIBUTION INTENSITY DATA

Test:U:24.00V I:0.2364A P:5.673W PF:1.000 Lamp Flux:84.7289x1 lm		
NAME: SF18-24V-5050-70-SPI4-3000-R	TYPE: 硅胶	WEIGHT:
DIM.: 16.5mm*16.5mm	SPEC.:	SERIAL No.:2022042901
MFR.: OLYMPIA	SUR.:1*0.0165	PROTECTION ANGLE:

Table--1

UNIT: cd

C (DEG) γ (DEG)	0	30	60	90	120	150	180	210	240	270	300	330							
0	14.9	15.0	15.2	15.3	15.3	15.5	14.9	15.0	15.2	15.3	15.3	15.5							
5	14.8	14.9	15.1	15.2	15.4	15.5	14.9	15.1	15.1	15.2	15.2	15.4							
10	14.7	14.9	15.0	15.0	15.3	15.5	15.0	15.1	15.0	15.0	15.0	15.3							
15	14.7	14.7	14.7	14.6	15.1	15.6	15.2	15.1	14.7	14.6	14.7	15.1							
20	14.5	14.5	14.4	14.2	14.8	15.6	15.1	15.1	14.4	14.0	14.4	14.9							
25	14.3	14.2	13.9	13.6	14.5	15.2	14.9	14.8	14.1	13.4	13.8	14.5							
30	14.2	13.9	13.3	12.9	14.1	15.0	15.2	14.5	13.7	12.6	13.2	14.2							
35	14.2	13.7	12.7	12.1	13.4	15.2	15.6	14.6	13.0	11.8	12.5	14.0							
40	14.1	13.3	11.9	11.2	12.6	15.2	15.9	14.6	12.1	10.9	11.8	13.6							
45	14.1	13.1	11.1	10.2	11.8	15.2	15.9	14.7	11.3	9.86	10.9	13.3							
50	13.9	12.8	10.2	9.13	10.9	14.9	16.0	14.4	10.5	8.79	9.99	12.9							
55	13.4	12.3	9.19	8.00	9.93	14.5	15.5	14.0	9.53	7.66	8.93	12.4							
60	12.5	11.5	8.24	6.83	9.06	13.8	14.6	13.4	8.69	6.48	7.94	11.7							
65	11.4	10.6	7.39	5.63	8.28	12.8	13.7	12.4	7.92	5.25	7.08	10.7							
70	10.4	9.57	6.49	4.41	7.33	11.7	12.7	11.3	7.02	4.01	6.19	9.65							
75	9.30	8.27	5.43	3.29	6.32	10.5	11.5	10.2	6.04	2.76	5.15	8.35							
80	8.21	7.11	4.38	2.00	5.28	9.21	10.3	8.97	5.07	1.63	4.13	7.17							
85	7.32	6.20	3.41	0.94	4.32	8.15	9.38	7.97	4.15	0.71	3.20	6.27							
90	6.98	5.82	2.93	0.45	3.86	7.67	9.24	7.52	3.66	0.30	2.77	5.85							
95	7.15	6.03	2.81	0.44	3.74	7.79	9.28	7.55	3.56	0.29	2.69	6.05							
100	7.26	6.17	2.45	0.44	3.59	8.03	9.10	7.77	3.40	0.29	2.25	6.25							
105	7.26	5.67	2.23	0.44	3.49	8.06	8.90	7.82	3.36	0.29	2.12	6.04							
110	6.82	5.22	2.08	0.43	3.47	7.85	8.87	7.73	3.35	0.29	2.11	5.58							
115	6.46	4.85	1.91	0.40	3.42	7.24	8.62	7.12	3.29	0.29	2.10	5.18							
120	5.97	4.44	2.00	0.40	3.15	6.58	7.90	6.46	3.03	0.29	1.95	4.76							
125	5.48	3.88	1.74	0.40	2.82	6.00	7.08	5.90	2.72	0.29	1.65	4.11							
130	4.68	3.57	1.41	0.40	2.42	5.38	6.32	5.28	2.33	0.29	1.38	3.74							
135	4.17	2.84	1.15	0.40	2.06	4.68	5.51	4.59	1.96	0.31	1.13	3.08							
140	3.58	2.16	1.02	0.40	1.73	3.92	4.66	3.84	1.62	0.32	0.94	2.40							
145	2.84	1.61	0.88	0.40	1.45	3.09	3.78	3.06	1.36	0.33	0.79	1.78							
150	2.19	1.29	0.72	0.40	1.13	2.45	2.89	2.42	1.06	0.34	0.65	1.39							
155	1.49	0.97	0.61	0.40	0.88	1.90	2.20	1.87	0.82	0.35	0.53	1.07							
160	1.34	0.75	0.53	0.40	0.72	1.40	1.62	1.37	0.64	0.35	0.46	0.78							
165	0.86	0.52	0.46	0.40	0.58	0.91	0.99	0.91	0.52	0.36	0.39	0.58							
170	0.46	0.42	0.43	0.40	0.52	0.60	0.47	0.63	0.45	0.36	0.38	0.48							
175	0.41	0.38	0.41	0.40	0.51	0.47	0.39	0.50	0.43	0.36	0.38	0.43							
180	0.37	0.37	0.40	0.40	0.42	0.41	0.39	0.42	0.42	0.37	0.38	0.41							

C Range: 0 - 360DEG
C Interval: 30.0DEG
Test Speed: HIGH
Temperature:25.3DEG
Operators:HXJ
Test Date:2022-04-29

γ Range: 0 - 180DEG
γ Interval: 1.0DEG
Test System:EVERFINE GO-2000B_V1 SYSTEM V2.0.269
Humidity:65.0%
Test Distance:9.200m [K=1.0000]
Remarks:

Photometric Data Table [cd]

G/C	0.0	30.0	60.0	90.0	120.0	150.0	180.0	210.0	240.0	270.0
0.0	14.88	15.03	15.17	15.26	15.35	15.48	14.88	15.03	15.17	15.26
3.0	14.81	14.98	15.18	15.24	15.39	15.51	14.92	15.07	15.17	15.26
6.0	14.77	14.92	15.10	15.17	15.36	15.51	14.93	15.08	15.11	15.19
9.0	14.74	14.87	15.00	15.05	15.31	15.53	14.99	15.08	15.02	15.04
12.0	14.71	14.84	14.85	14.87	15.20	15.55	15.06	15.09	14.89	14.82
15.0	14.67	14.73	14.70	14.63	15.07	15.61	15.15	15.09	14.73	14.56
18.0	14.59	14.63	14.51	14.37	14.91	15.64	15.17	15.13	14.56	14.25
21.0	14.44	14.48	14.28	14.05	14.74	15.55	15.04	15.12	14.36	13.89
24.0	14.30	14.27	13.97	13.69	14.59	15.32	14.89	14.88	14.18	13.51
27.0	14.24	14.07	13.69	13.30	14.41	15.08	14.93	14.65	13.97	13.08
30.0	14.22	13.87	13.34	12.86	14.13	15.01	15.17	14.52	13.71	12.63
33.0	14.21	13.79	12.95	12.40	13.71	15.07	15.44	14.51	13.29	12.14
36.0	14.17	13.65	12.55	11.89	13.23	15.15	15.64	14.60	12.81	11.62
39.0	14.14	13.41	12.11	11.36	12.74	15.16	15.86	14.64	12.30	11.05
42.0	14.13	13.20	11.63	10.79	12.25	15.16	15.94	14.65	11.80	10.46
45.0	14.12	13.06	11.12	10.20	11.76	15.17	15.95	14.67	11.31	9.862
48.0	14.00	12.90	10.61	9.542	11.27	15.03	15.96	14.57	10.83	9.204
51.0	13.80	12.69	10.04	8.918	10.71	14.82	15.93	14.36	10.30	8.551
54.0	13.52	12.40	9.391	8.215	10.13	14.57	15.63	14.13	9.713	7.872
57.0	13.08	11.99	8.792	7.552	9.561	14.24	15.16	13.81	9.175	7.154
60.0	12.51	11.52	8.239	6.833	9.058	13.78	14.64	13.35	8.688	6.485
63.0	11.87	11.00	7.732	6.109	8.596	13.19	14.09	12.79	8.235	5.737
66.0	11.22	10.42	7.219	5.381	8.109	12.57	13.56	12.20	7.758	4.993
69.0	10.62	9.788	6.681	4.657	7.531	11.90	12.97	11.56	7.205	4.274
72.0	9.964	9.074	6.074	3.913	6.933	11.25	12.27	10.93	6.642	3.505
75.0	9.300	8.271	5.425	3.290	6.325	10.54	11.51	10.24	6.044	2.756
78.0	8.627	7.542	4.772	2.551	5.697	9.708	10.76	9.446	5.466	2.112
81.0	8.008	6.909	4.174	1.757	5.068	8.964	10.09	8.752	4.878	1.419
84.0	7.470	6.366	3.576	1.114	4.490	8.326	9.522	8.138	4.315	0.8712
87.0	7.152	5.950	3.138	0.6273	4.057	7.875	9.271	7.706	3.884	0.4634
90.0	6.981	5.815	2.930	0.4523	3.865	7.674	9.239	7.525	3.659	0.2996
93.0	7.071	5.921	2.858	0.4423	3.775	7.720	9.282	7.542	3.598	0.2917
96.0	7.161	6.082	2.786	0.4406	3.714	7.826	9.242	7.558	3.533	0.2865
99.0	7.222	6.187	2.514	0.4389	3.614	7.981	9.136	7.724	3.442	0.2865
102.0	7.297	6.070	2.362	0.4371	3.543	8.038	9.021	7.835	3.362	0.2865
105.0	7.263	5.668	2.232	0.4354	3.493	8.055	8.900	7.820	3.357	0.2865
108.0	6.901	5.372	2.096	0.4337	3.478	7.985	8.875	7.798	3.352	0.2865
111.0	6.750	5.141	2.011	0.4320	3.472	7.774	8.855	7.635	3.347	0.2865
114.0	6.534	4.925	1.920	0.3970	3.448	7.387	8.709	7.253	3.332	0.2865
117.0	6.298	4.678	1.969	0.3970	3.333	6.919	8.361	6.836	3.201	0.2865
120.0	5.972	4.442	2.000	0.3970	3.147	6.578	7.904	6.459	3.035	0.2865
123.0	5.710	4.145	1.895	0.3970	2.966	6.241	7.386	6.127	2.859	0.2865
126.0	5.354	3.794	1.684	0.3970	2.745	5.884	6.939	5.795	2.633	0.2865
129.0	4.822	3.608	1.469	0.3970	2.494	5.507	6.476	5.409	2.401	0.2914
132.0	4.424	3.431	1.297	0.3970	2.272	5.100	5.989	5.017	2.171	0.3015
135.0	4.167	2.838	1.146	0.3970	2.056	4.678	5.511	4.590	1.959	0.3115
138.0	3.826	2.366	1.081	0.3970	1.845	4.225	4.999	4.142	1.753	0.3136
141.0	3.449	2.085	0.9855	0.3970	1.669	3.753	4.476	3.695	1.567	0.3186
144.0	2.997	1.758	0.9100	0.3970	1.508	3.270	3.958	3.208	1.422	0.3246
147.0	2.600	1.507	0.8295	0.3970	1.317	2.833	3.410	2.775	1.236	0.3317
150.0	2.188	1.286	0.7190	0.3972	1.131	2.451	2.888	2.418	1.060	0.3360
153.0	1.876	1.065	0.6386	0.3978	0.9756	2.105	2.456	2.077	0.8990	0.3415
156.0	1.388	0.9296	0.5982	0.3983	0.8647	1.793	2.069	1.775	0.7836	0.3483
159.0	1.412	0.7837	0.5479	0.3988	0.7593	1.497	1.718	1.478	0.6781	0.3534
162.0	1.167	0.6428	0.4977	0.3994	0.6639	1.160	1.385	1.162	0.5976	0.3576
165.0	0.8556	0.5174	0.4624	0.3999	0.5833	0.9141	0.9941	0.9103	0.5174	0.3594
168.0	0.6239	0.4372	0.4423	0.4004	0.5428	0.7083	0.7478	0.7292	0.4572	0.3600
171.0	0.4474	0.4019	0.4272	0.4010	0.5127	0.5525	0.4419	0.5884	0.4472	0.3607
174.0	0.4173	0.3809	0.4171	0.4015	0.5026	0.4773	0.3999	0.5078	0.4371	0.3613
177.0	0.3820	0.3719	0.4021	0.4021	0.4876	0.4623	0.3820	0.4927	0.4271	0.3619
180.0	0.3719	0.3719	0.4021	0.4021	0.4171	0.4071	0.3870	0.4222	0.4171	0.3669
G/C	300.0	330.0								
0.0	15.35	15.48								
3.0	15.29	15.41								
6.0	15.19	15.35								
9.0	15.08	15.29								
12.0	14.91	15.24								
15.0	14.74	15.10								
18.0	14.51	15.00								
21.0	14.26	14.81								
24.0	13.92	14.60								
27.0	13.60	14.37								
30.0	13.23	14.16								

C Range: 0 - 360DEG
 C Interval: 30.0DEG
 Test Speed: HIGH
 Temperature: 25.3DEG
 Operators: HXJ
 Test Date: 2022-04-29

γ Range: 0 - 180DEG
 γ Interval: 1.0DEG
 Test System: EVERFINE GO-2000B_V1 SYSTEM V2.0.269
 Humidity: 65.0%
 Test Distance: 9.200m [K=1.0000]
 Remarks:

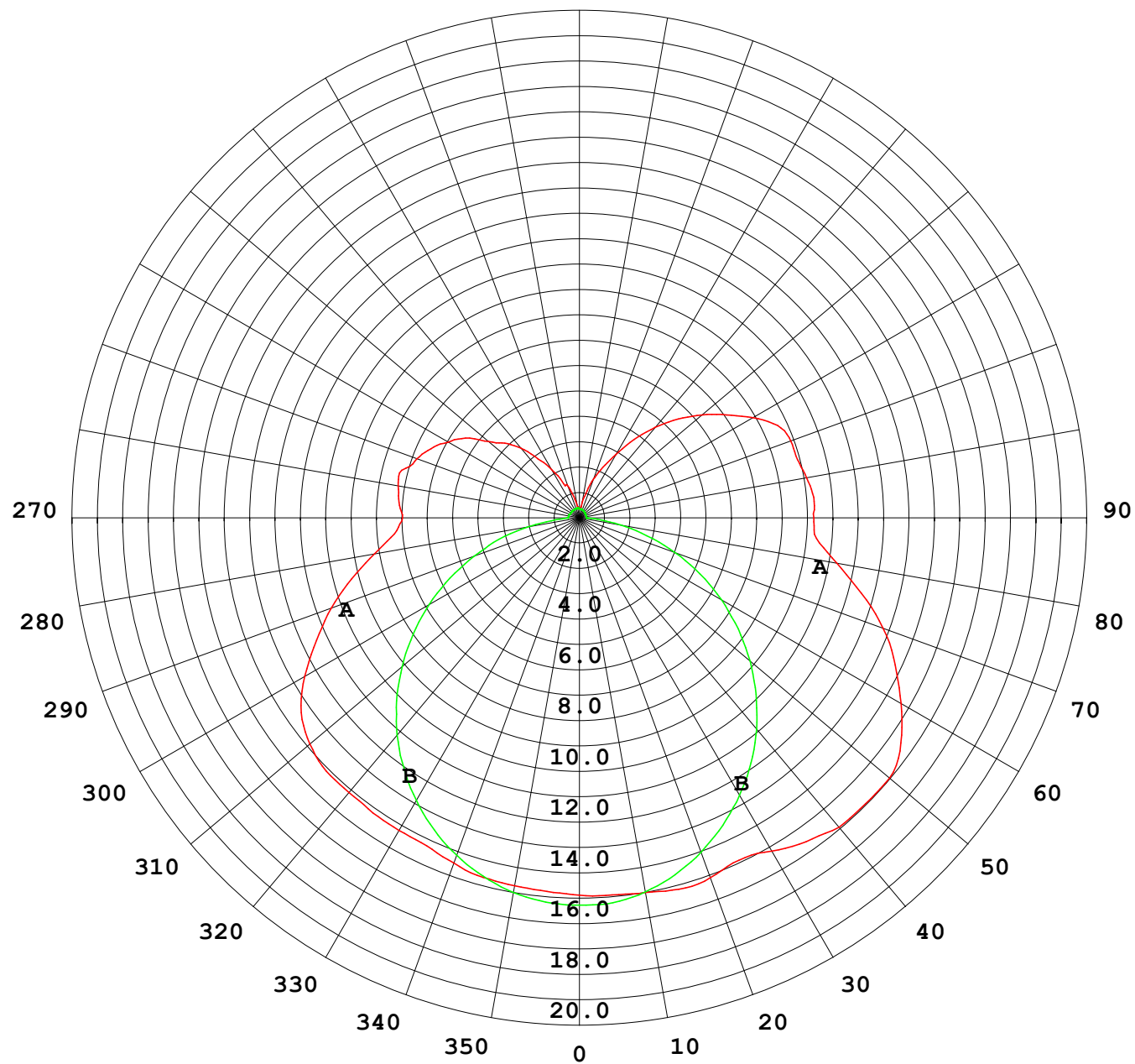
Photometric Data Table [cd]

33.0	12.83	14.07
36.0	12.38	13.91
39.0	11.94	13.64
42.0	11.42	13.41
45.0	10.88	13.26
48.0	10.36	13.08
51.0	9.787	12.85
54.0	9.140	12.52
57.0	8.516	12.08
60.0	7.944	11.66
63.0	7.421	11.12
66.0	6.909	10.50
69.0	6.376	9.877
72.0	5.777	9.194
75.0	5.154	8.345
78.0	4.521	7.606
81.0	3.928	6.982
84.0	3.365	6.420
87.0	2.914	6.047
90.0	2.774	5.850
93.0	2.721	5.920
96.0	2.516	6.101
99.0	2.306	6.247
102.0	2.196	6.237
105.0	2.123	6.041
108.0	2.115	5.836
111.0	2.107	5.514
114.0	2.099	5.247
117.0	2.091	4.981
120.0	1.954	4.755
123.0	1.754	4.434
126.0	1.582	4.006
129.0	1.442	3.795
132.0	1.276	3.524
135.0	1.125	3.077
138.0	1.015	2.660
141.0	0.9243	2.258
144.0	0.8239	1.901
147.0	0.7634	1.614
150.0	0.6480	1.388
153.0	0.5626	1.172
156.0	0.5125	1.026
159.0	0.4673	0.8499
162.0	0.4472	0.6890
165.0	0.3919	0.5783
168.0	0.3810	0.5077
171.0	0.3797	0.4675
174.0	0.3783	0.4373
177.0	0.3769	0.4222
180.0	0.3769	0.4121

C Range: 0 - 360DEG
 C Interval: 30.0DEG
 Test Speed: HIGH
 Temperature: 25.3DEG
 Operators: HXJ
 Test Date: 2022-04-29

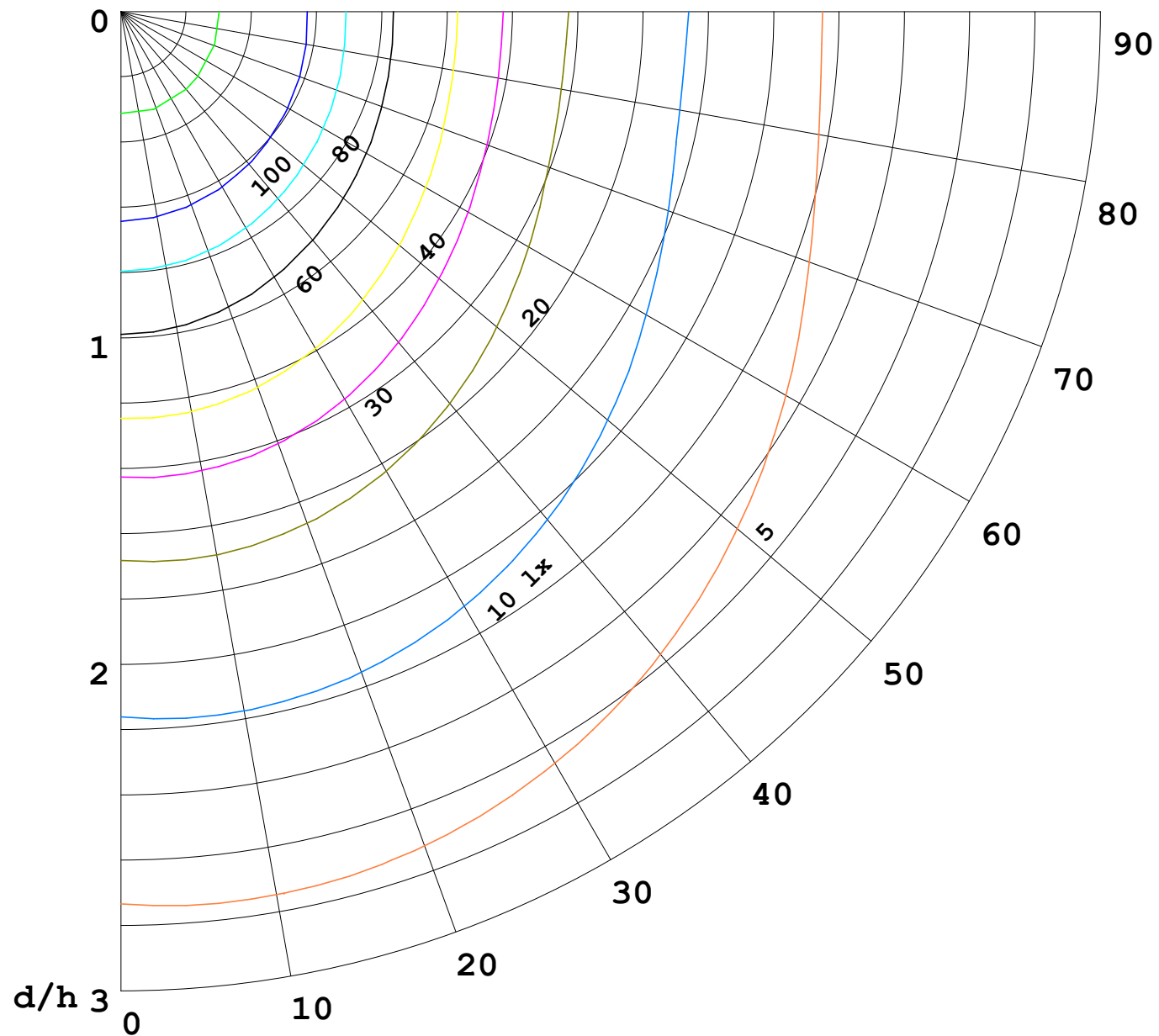
γ Range: 0 - 180DEG
 γ Interval: 1.0DEG
 Test System: EVERFINE GO-2000B_V1 SYSTEM V2.0.269
 Humidity: 65.0%
 Test Distance: 9.200m [K=1.0000]
 Remarks:

I (cd)



1000 lm

$\kappa = 1$



F = 5000 lm
 K = 0.7
 Hcc = 0.0 m
 Hfc = 0.0 m
 Eave = 100 lx

	Pcc	Pw	Pfc
—	70	50	30
—	50	30	20

