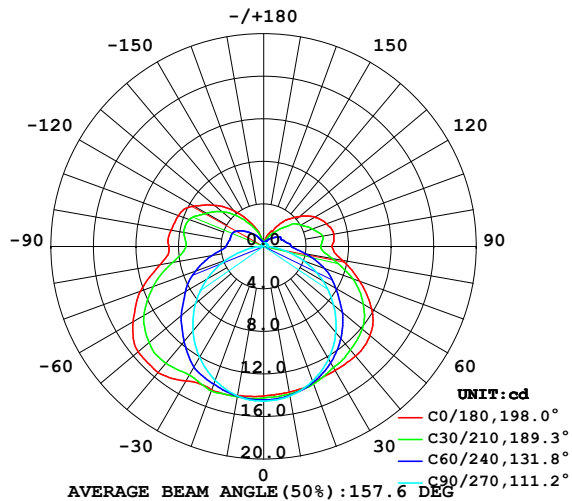


LUMINAIRE PHOTOMETRIC TEST REPORT

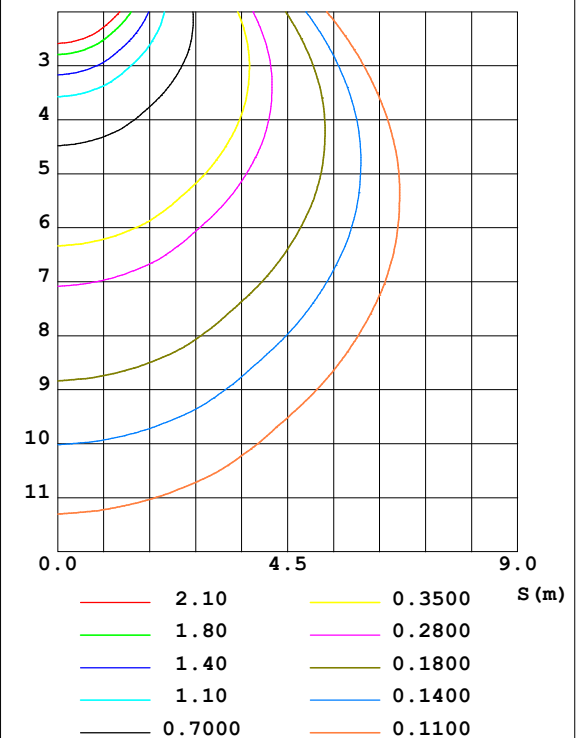
Test:U:24.00V I:0.2360A P:5.664W PF:1.000 Lamp Flux:80.5901x1 lm		
NAME: SF18-24V-5050-70-SPI4-RGBW-4000-R	TYPE: 硅胶	WEIGHT:
DIM.: 16.5mm*16.5mm	SPEC.:	SERIAL No.:2022042901
MFR.: OLYMPIA	SUR.:1*0.0165	PROTECTION ANGLE:

DATA OF LAMP		PHOTOMETRIC DATA Eff: 14.23 lm/W			
MODEL	5050	I _{max} (cd)	15.47	S/MH (C0/180)	1.47
NOMINAL POWER (W)	4.5	LOR (%)	100.0	S/MH (C90/270)	1.25
RATED VOLTAGE (V)	24	TOTAL FLUX (lm)	80.582	η UP, DN (C0-180)	12.0, 37.1
NOMINAL FLUX (lm)	80.5901	CIE CLASS	SEMI-D.	η UP, DN (C180-360)	13.0, 37.9
LAMPS INSIDE	1	η up (%)	25.0	CIBSE SHR NOM	1.50
TEST VOLTAGE (V)	24.0	η down (%)	75.0	CIBSE SHR MAX	1.55

LUMINOUS INTENSITY DISTRIBUTION DIAGRAM



C0 PLANE ISOLUX DIAGRAM (UNIT:lx)



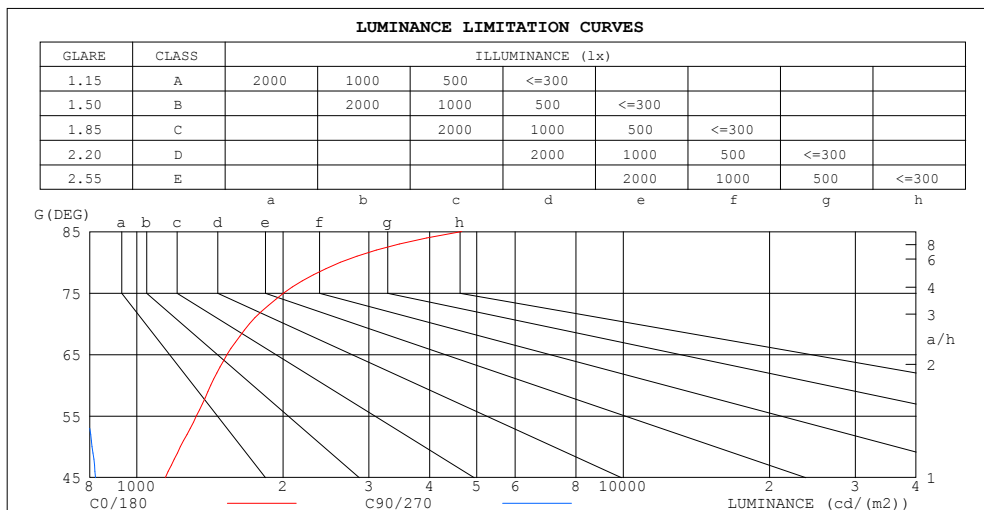
C Range: 0 - 360DEG
C Interval: 30.0DEG
Test Speed: HIGH
Temperature: 25.3DEG
Operators: HXJ
Test Date: 2022-04-29

γ Range: 0 - 180DEG
γ Interval: 1.0DEG
Test System: EVERFINE GO-2000B_V1 SYSTEM V2.0.269
Humidity: 65.0%
Test Distance: 9.200m [K=1.0000]
Remarks:

ZONAL FLUX DIAGRAM AND LUMINANCE LIMITATION CURVES

ZONAL FLUX DIAGRAM:

γ	C0	C45	C90	C135	C180	C225	C270	C315	γ	Φ zone	Φ total	%lum, lamp
10	13.91	14.16	14.27	14.77	14.23	14.34	14.27	14.47	0- 10	1.375	1.375	1.71,1.71
20	13.67	13.67	13.47	14.58	14.35	14.12	13.38	13.94	10- 20	4.013	5.388	6.69,6.69
30	13.47	12.88	12.21	14.02	14.60	13.55	12.06	13.08	20- 30	6.291	11.68	14.5,14.5
40	13.44	11.99	10.56	13.45	15.47	12.99	10.36	12.12	30- 40	8.132	19.81	24.6,24.6
50	13.04	10.88	8.587	12.51	15.40	12.10	8.365	10.95	40- 50	9.349	29.16	36.2,36.2
60	11.72	9.318	6.416	11.14	14.18	10.76	6.158	9.325	50- 60	9.654	38.81	48.2,48.2
70	9.622	7.519	4.064	9.245	12.35	8.938	3.811	7.506	60- 70	8.945	47.76	59.3,59.3
80	7.516	5.270	1.687	7.001	9.918	6.815	1.524	5.244	70- 80	7.281	55.04	68.3,68.3
90	6.433	3.986	0.3625	5.571	8.921	5.430	0.2565	3.950	80- 90	5.410	60.45	75,75
100	6.699	3.925	0.3566	5.601	8.880	5.468	0.2563	3.892	90-100	4.922	65.37	81.1,81.1
110	6.293	3.347	0.3518	5.433	8.533	5.341	0.2563	3.470	100-110	4.626	70.00	86.9,86.9
120	5.540	2.955	0.3518	4.676	7.597	4.579	0.2563	3.051	110-120	3.955	73.95	91.8,91.8
130	4.389	2.166	0.3518	3.726	6.034	3.644	0.2563	2.222	120-130	2.971	76.92	95.5,95.5
140	3.223	1.460	0.3518	2.698	4.405	2.594	0.2785	1.455	130-140	1.923	78.85	97.8,97.8
150	1.630	0.9623	0.3518	1.676	2.702	1.621	0.2827	0.8771	140-150	1.051	79.90	99.1,99.1
160	1.192	0.5828	0.3518	0.9722	1.476	0.9274	0.2865	0.5446	150-160	0.4794	80.38	99.7,99.7
170	0.4275	0.3794	0.3518	0.5100	0.4217	0.4776	0.3025	0.3978	160-170	0.1682	80.55	100,99.9
180	0.3418	0.3468	0.3518	0.3845	0.3418	0.3719	0.3216	0.3719	170-180	0.0375	80.58	100,100
DEG	LUMINOUS INTENSITY:cd									UNIT:lm		



LUMINANCE cd/(m2)		
G (DEG)	C0/180	C90/270
85	4659	568
80	2623	589
75	2006	668
70	1705	720
65	1533	754
60	1420	778
55	1327	794
50	1229	810
45	1145	823

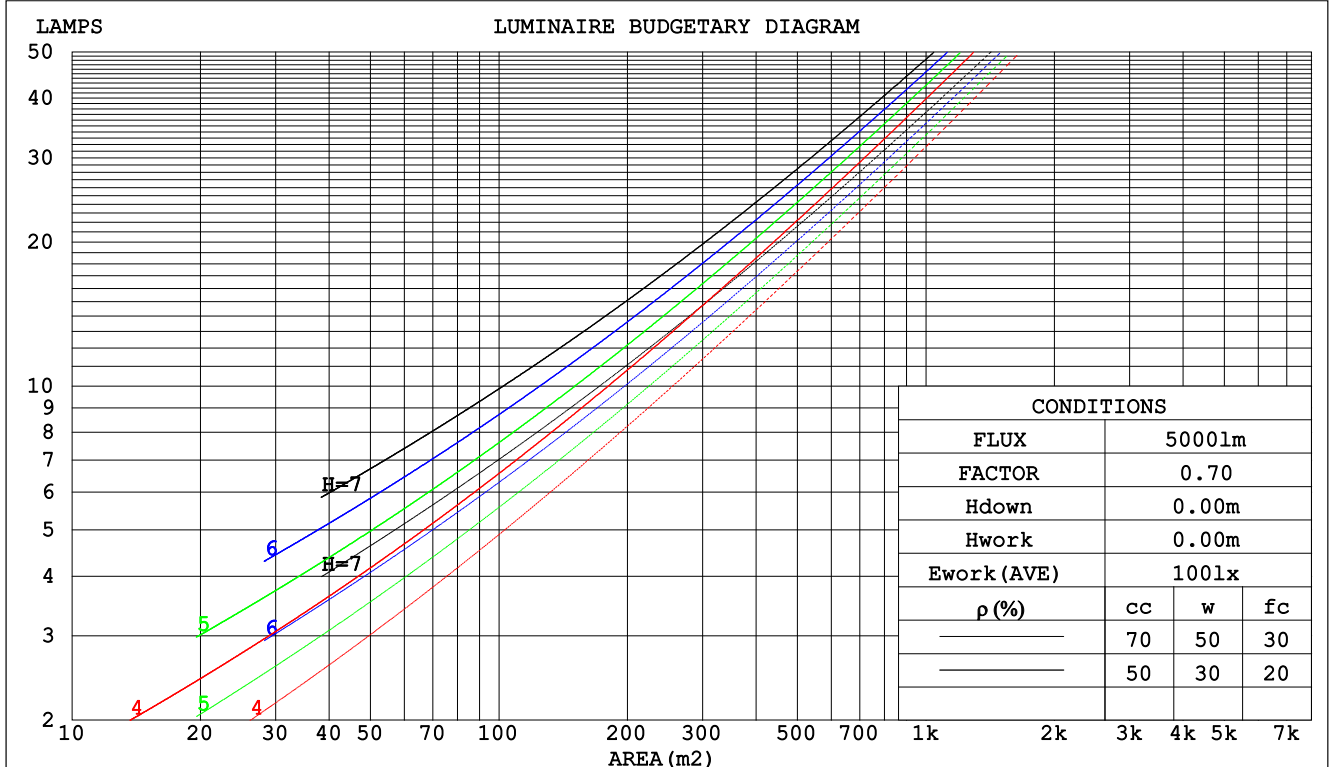
C Range: 0 - 360DEG
C Interval: 30.0DEG
Test Speed: HIGH
Temperature:25.3DEG
Operators:HXJ
Test Date:2022-04-29

γ Range: 0 - 180DEG
 γ Interval: 1.0DEG
Test System:EVERFINE GO-2000B_V1 SYSTEM V2.0.269
Humidity:65.0%
Test Distance:9.200m [K=1.0000]
Remarks:

CU AND LUMINAIRE BUDGETARY ESTIMATE DIAGRAM

Test:U:24.00V I:0.2360A P:5.664W PF:1.000 Lamp Flux:80.5901x1 lm		
NAME: SF18-24V-5050-70-SPI4-RGBW-4000-R	TYPE: 硅胶	WEIGHT:
DIM.: 16.5mm*16.5mm	SPEC.:	SERIAL No.:2022042901
MFR.: OLYMPIA	SUR.:1*0.0165	PROTECTION ANGLE:

ρ_{cc}	80%			70%			50%			30%			10%			0
ρ_w	50%	30%	10%	50%	30%	10%	50%	30%	10%	50%	30%	10%	50%	30%	10%	0
ρ_{fc}	20%			20%			20%			20%			20%			0
RCR	RCR:Room Cavity Ratio															



C Range: 0 - 360DEG
C Interval: 30.0DEG
Test Speed: HIGH
Temperature:25.3DEG
Operators:HXJ
Test Date:2022-04-29

γ Range: 0 - 180DEG
 γ Interval: 1.0DEG
Test System:EVERFINE GO-2000B_V1 SYSTEM V2.0.269
Humidity:65.0%
Test Distance:9.200m [K=1.0000]
Remarks:

WEC AND CCEC

Test:U:24.00V I:0.2360A P:5.664W PF:1.000 Lamp Flux:80.5901x1 lm					
NAME: SF18-24V-5050-70-SPI4-RGBW-4000-R			TYPE: 硅胶		WEIGHT:
DIM.: 16.5mm*16.5mm			SPEC.:		SERIAL No.:2022042901
MFR.: OLYMPIA			SUR.:1*0.0165		PROTECTION ANGLE:

pcc	80%			70%			50%			30%			10%			0	
pw	50%	30%	10%	50%	30%	10%	50%	30%	10%	50%	30%	10%	50%	30%	10%	0	
pfc	20%			20%			20%			20%			20%			0	
RCR	RCR:Room Cavity Ratio						Wall Exitance Coefficients(WEC)										
0.0																	
1.0	.378	.215	.068	.363	.207	.066	.335	.192	.061	.310	.179	.057	.286	.166	.053		
2.0	.329	.180	.055	.316	.174	.054	.291	.162	.050	.267	.150	.047	.246	.139	.044		
3.0	.293	.156	.047	.281	.151	.045	.258	.140	.043	.237	.130	.040	.217	.120	.037		
4.0	.264	.137	.040	.253	.133	.039	.232	.123	.037	.213	.114	.035	.195	.106	.032		
5.0	.240	.123	.035	.230	.118	.034	.211	.110	.032	.194	.102	.030	.177	.095	.028		
6.0	.220	.110	.032	.211	.107	.031	.194	.099	.029	.178	.092	.027	.162	.086	.025		
7.0	.203	.101	.028	.195	.097	.028	.179	.090	.026	.164	.084	.024	.150	.078	.023		
8.0	.189	.092	.026	.181	.089	.025	.166	.083	.024	.152	.077	.022	.139	.072	.021		
9.0	.176	.085	.024	.169	.082	.023	.155	.077	.022	.142	.071	.020	.130	.066	.019		
10.0	.164	.079	.022	.158	.076	.021	.145	.071	.020	.133	.066	.019	.122	.061	.018		

pcc	80%			70%			50%			30%			10%			0
pw	50%	30%	10%	50%	30%	10%	50%	30%	10%	50%	30%	10%	50%	30%	10%	0
pfc	20%			20%			20%			20%			20%			0
RCR	RCR:Room Cavity Ratio						Ceiling Cavity Exitance Coefficients(CCEC)									
0.0	.381	.381	.381	.325	.325	.325	.222	.222	.222	.128	.128	.128	.041	.041	.041	
1.0	.377	.347	.321	.322	.298	.276	.221	.205	.191	.127	.119	.111	.041	.038	.036	
2.0	.370	.325	.287	.317	.280	.248	.217	.193	.173	.125	.113	.101	.040	.036	.033	
3.0	.363	.309	.265	.311	.266	.230	.214	.185	.161	.123	.108	.095	.040	.035	.031	
4.0	.356	.296	.251	.305	.256	.218	.210	.178	.154	.121	.105	.091	.039	.034	.030	
5.0	.348	.287	.241	.299	.248	.210	.206	.173	.148	.119	.102	.088	.038	.033	.029	
6.0	.341	.279	.235	.293	.242	.204	.202	.169	.144	.117	.099	.086	.038	.033	.028	
7.0	.334	.272	.229	.287	.236	.200	.198	.166	.142	.115	.098	.084	.037	.032	.028	
8.0	.327	.267	.226	.282	.232	.197	.195	.163	.140	.113	.096	.083	.037	.031	.028	
9.0	.321	.262	.223	.277	.228	.194	.192	.160	.138	.112	.095	.082	.036	.031	.027	
10.0	.315	.258	.220	.272	.224	.192	.189	.158	.136	.110	.093	.081	.036	.031	.027	

C Range: 0 - 360DEG
 C Interval: 30.0DEG
 Test Speed: HIGH
 Temperature:25.3DEG
 Operators:HXJ
 Test Date:2022-04-29

γ Range: 0 - 180DEG
 γ Interval: 1.0DEG
 Test System:EVERFINE GO-2000B_V1 SYSTEM V2.0.269
 Humidity:65.0%
 Test Distance:9.200m [K=1.0000]
 Remarks:

Uncorrected UGR Table

Test:U:24.00V I:0.2360A P:5.664W PF:1.000 Lamp Flux:80.5901x1 lm											
NAME: SF18-24V-5050-70-SPI4-RGBW-4000-R						TYPE:硅胶			WEIGHT:		
DIM.: 16.5mm*16.5mm						SPEC.:			SERIAL No.:2022042901		
MFR.: OLYMPIA						SUR.:1*0.0165			PROTECTION ANGLE:		
ceiling/cavity	0.7	0.7	0.5	0.5	0.3	0.7	0.7	0.5	0.5	0.3	
walls	0.5	0.3	0.5	0.3	0.3	0.5	0.3	0.5	0.3	0.3	
working plane	0.2	0.2	0.2	0.2	0.2	0.2	0.2	0.2	0.2	0.2	
Room dimensions		Viewed crosswise					Viewed endwise				
x = 2H y = 2H	12.7	14.0	13.2	14.6	15.2	10.1	11.4	10.7	12.0	12.7	
	3H	15.2	16.4	15.8	17.0	17.7	11.7	12.9	12.3	13.5	14.3
	4H	16.5	17.6	17.1	18.2	19.0	12.4	13.5	13.0	14.1	14.9
	6H	17.8	18.9	18.5	19.6	20.4	12.8	13.9	13.5	14.5	15.3
	8H	18.6	19.6	19.3	20.3	21.1	12.9	14.0	13.6	14.6	15.4
	12H	19.5	20.5	20.2	21.2	22.0	13.0	14.0	13.7	14.7	15.5
4H	2H	13.2	14.3	13.8	14.9	15.7	11.3	12.4	12.0	13.1	13.9
	3H	15.9	16.9	16.6	17.6	18.4	13.1	14.1	13.8	14.8	15.6
	4H	17.4	18.3	18.1	19.0	19.8	13.9	14.8	14.7	15.6	16.4
	6H	19.0	19.8	19.7	20.5	21.4	14.6	15.4	15.3	16.1	17.0
	8H	19.9	20.6	20.6	21.4	22.2	14.8	15.5	15.5	16.3	17.2
	12H	20.9	21.6	21.6	22.3	23.2	15.0	15.7	15.7	16.4	17.3
8H	4H	17.7	18.4	18.4	19.2	20.1	14.9	15.7	15.6	16.4	17.3
	6H	19.5	20.2	20.3	20.9	21.9	15.9	16.5	16.6	17.3	18.2
	8H	20.6	21.2	21.4	22.0	22.9	16.3	16.8	17.1	17.6	18.6
	12H	21.9	22.4	22.7	23.2	24.2	16.6	17.1	17.4	17.9	18.9
12H	4H	17.7	18.4	18.4	19.1	20.0	15.2	15.9	15.9	16.6	17.5
	6H	19.6	20.2	20.4	21.0	21.9	16.3	16.9	17.1	17.7	18.6
	8H	20.8	21.3	21.6	22.1	23.1	16.9	17.4	17.7	18.2	19.2
Variations with the observer position at spacings:											
S = 1.0H	+ 0.1 / - 0.1					+ 0.1 / - 0.2					
1.5H	+ 0.2 / - 0.3					+ 0.2 / - 0.3					
2.0H	+ 0.2 / - 0.4					+ 0.2 / - 0.4					

CIE Pub.117 Corrected 80.59 lm Total Lamp Luminous Flux. (8log(F/F0) = -8.7)

C Range: 0 - 360DEG
C Interval: 30.0DEG
Test Speed: HIGH
Temperature:25.3DEG
Operators:HXJ
Test Date:2022-04-29

γ Range: 0 - 180DEG
γ Interval: 1.0DEG
Test System:EVERFINE GO-2000B_V1 SYSTEM V2.0.269
Humidity:65.0%
Test Distance:9.200m [K=1.0000]
Remarks:

UTILIZATION FACTORS TABLE

Test:U:24.00V I:0.2360A P:5.664W PF:1.000 Lamp Flux:80.5901x1 lm		
NAME: SF18-24V-5050-70-SPI4-RGBW-4000-R	TYPE: 硅胶	WEIGHT:
DIM.: 16.5mm*16.5mm	SPEC.:	SERIAL No.:2022042901
MFR.: OLYMPIA	SUR.:1*0.0165	PROTECTION ANGLE:

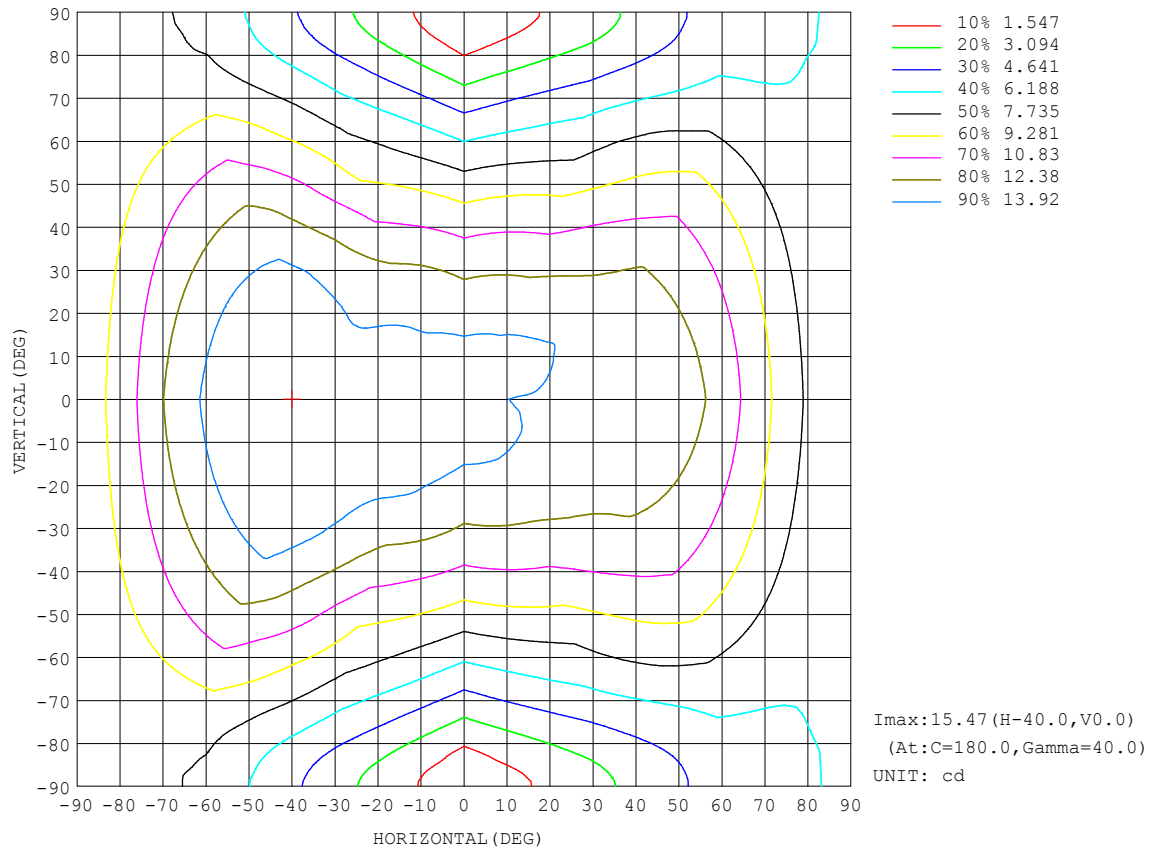
REFLECTANCE										
Ceiling	0.8	0.8	0.8	0.7	0.7	0.7	0.5	0.5	0.5	0
Walls	0.7	0.5	0.3	0.7	0.5	0.3	0.7	0.5	0.3	0
Working plane	0.2	0.2	0.2	0.2	0.2	0.2	0.2	0.2	0.2	0
ROOM INDEX	UTILIZATION FACTORS (PERCENT) $k(RI) \times RCR = 5$									
$k = 0.60$	45	33	25	44	32	25	42	31	24	18
0.80	54	41	33	52	40	32	49	38	31	23
1.00	62	49	40	60	48	40	56	47	38	29
1.25	69	56	47	66	55	46	61	51	44	34
1.50	74	62	53	71	60	52	65	56	49	38
2.00	82	70	62	78	68	60	72	63	57	44
2.50	86	76	68	82	73	66	75	68	61	47
3.00	90	81	73	86	78	71	78	71	66	51
4.00	95	87	80	90	83	77	82	76	72	55
5.00	98	91	85	93	87	82	85	80	75	58
ROOM INDEX	UF (total)									Direct
According to DIN EN 13032-2 2004			Suspended					SHRNOM = 1.25		

C Range: 0 - 360DEG
 C Interval: 30.0DEG
 Test Speed: HIGH
 Temperature:25.3DEG
 Operators:HXJ
 Test Date:2022-04-29

γ Range: 0 - 180DEG
 γ Interval: 1.0DEG
 Test System:EVERFINE GO-2000B_V1 SYSTEM V2.0.269
 Humidity:65.0%
 Test Distance:9.200m [K=1.0000]
 Remarks:

ISOCANDELA DIAGRAM

Test:U:24.00V I:0.2360A P:5.664W PF:1.000 Lamp Flux:80.5901x1 lm		
NAME: SF18-24V-5050-70-SPI4-RGBW-4000-R	TYPE: 硅胶	WEIGHT:
DIM.: 16.5mm*16.5mm	SPEC.:	SERIAL No.:2022042901
MFR.: OLYMPIA	SUR.:1*0.0165	PROTECTION ANGLE:

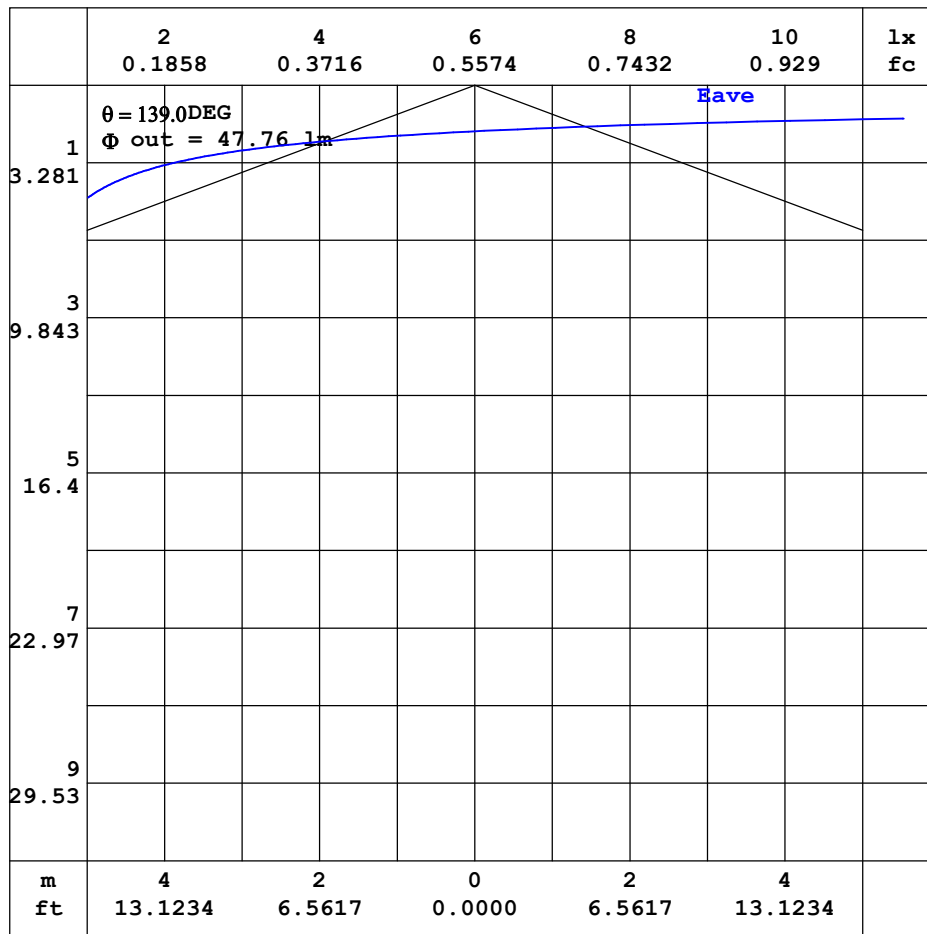


C Range: 0 - 360DEG
C Interval: 30.0DEG
Test Speed: HIGH
Temperature:25.3DEG
Operators:HXJ
Test Date:2022-04-29

γ Range: 0 - 180DEG
 γ Interval: 1.0DEG
Test System:EVERFINE GO-2000B_V1 SYSTEM V2.0.269
Humidity:65.0%
Test Distance:9.200m [K=1.0000]
Remarks:

AAI CURVES

Test:U:24.00V I:0.2360A P:5.664W PF:1.000 Lamp Flux:80.5901x1 lm		
NAME: SF18-24V-5050-70-SPI4-RGBW-4000-R	TYPE: 硅胶	WEIGHT:
DIM.: 16.5mm*16.5mm	SPEC.:	SERIAL No.:2022042901
MFR.: OLYMPIA	SUR.:1*0.0165	PROTECTION ANGLE:



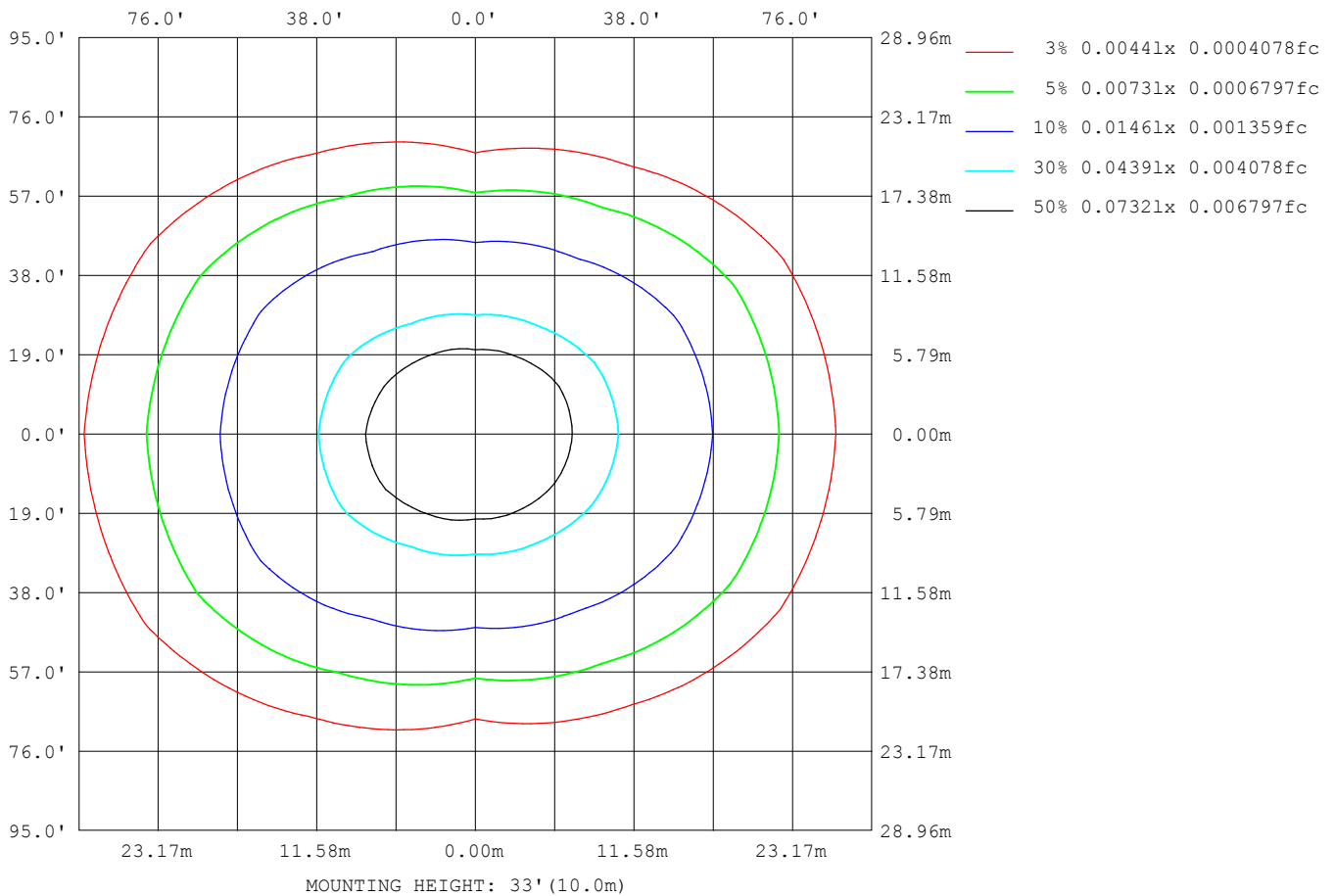
Note: The Curves indicate the illuminated area and the average illumination when the luminaire is at different distance.

C Range: 0 - 360DEG
C Interval: 30.0DEG
Test Speed: HIGH
Temperature: 25.3DEG
Operators: HXJ
Test Date: 2022-04-29

γ Range: 0 - 180DEG
γ Interval: 1.0DEG
Test System: EVERFINE GO-2000B_V1 SYSTEM V2.0.269
Humidity: 65.0%
Test Distance: 9.200m [K=1.0000]
Remarks:

ISOLUX DIAGRAM

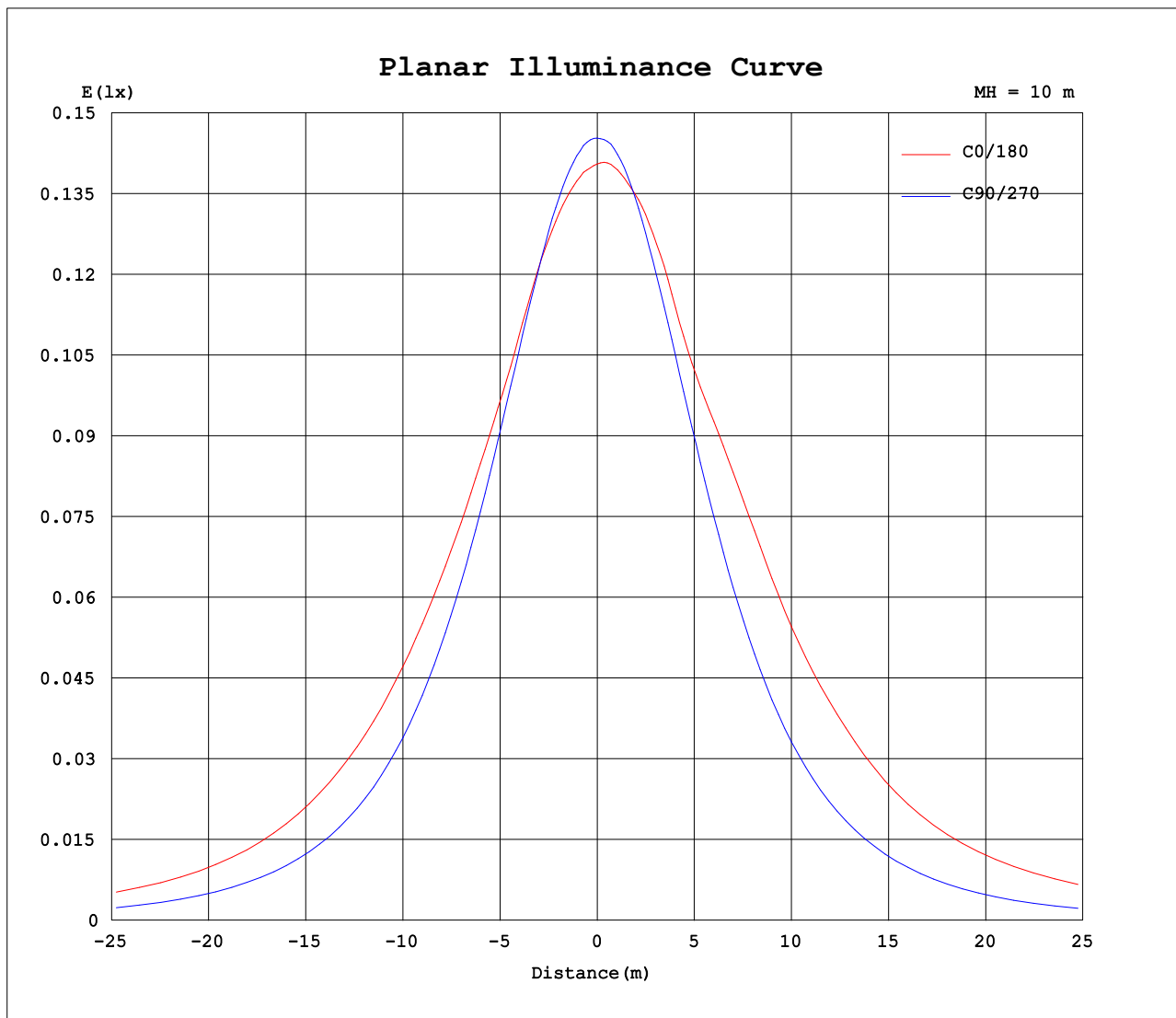
Test:U:24.00V I:0.2360A P:5.664W PF:1.000 Lamp Flux:80.5901x1 lm		
NAME: SF18-24V-5050-70-SPI4-RGBW-4000-R	TYPE: 硅胶	WEIGHT:
DIM.: 16.5mm*16.5mm	SPEC.:	SERIAL No.:2022042901
MFR.: OLYMPIA	SUR.:1*0.0165	PROTECTION ANGLE:



C Range: 0 - 360DEG
C Interval: 30.0DEG
Test Speed: HIGH
Temperature:25.3DEG
Operators:HXJ
Test Date:2022-04-29

γ Range: 0 - 180DEG
 γ Interval: 1.0DEG
Test System:EVERFINE GO-2000B_V1 SYSTEM V2.0.269
Humidity:65.0%
Test Distance:9.200m [K=1.0000]
Remarks:

Planar Illuminance Curve



C Range: 0 - 360DEG
C Interval: 30.0DEG
Test Speed: HIGH
Temperature: 25.3DEG
Operators: HXJ
Test Date: 2022-04-29

γ Range: 0 - 180DEG
 γ Interval: 1.0DEG
Test System: EVERFINE GO-2000B_V1 SYSTEM V2.0.269
Humidity: 65.0%
Test Distance: 9.200m [K=1.0000]
Remarks:

LUMINOUS DISTRIBUTION INTENSITY DATA

Test:U:24.00V I:0.2360A P:5.664W PF:1.000 Lamp Flux:80.5901x1 lm		
NAME: SF18-24V-5050-70-SPI4-RGBW-4000-R	TYPE: 硅胶	WEIGHT:
DIM.: 16.5mm*16.5mm	SPEC.:	SERIAL No.:2022042901
MFR.: OLYMPIA	SUR.:1*0.0165	PROTECTION ANGLE:

Table--1

UNIT: cd

C (DEG) γ (DEG)	0	30	60	90	120	150	180	210	240	270	300	330						
0	14.1	14.3	14.4	14.5	14.7	14.8	14.1	14.3	14.4	14.5	14.7	14.8						
5	14.0	14.2	14.4	14.5	14.7	14.9	14.2	14.3	14.4	14.5	14.5	14.7						
10	13.9	14.1	14.2	14.3	14.6	14.9	14.2	14.4	14.3	14.3	14.3	14.6						
15	13.8	13.9	14.0	13.9	14.4	15.0	14.4	14.4	14.1	13.9	14.1	14.4						
20	13.7	13.7	13.6	13.5	14.2	15.0	14.3	14.5	13.8	13.4	13.7	14.2						
25	13.5	13.5	13.2	12.9	13.9	14.7	14.2	14.2	13.5	12.8	13.2	13.9						
30	13.5	13.1	12.6	12.2	13.5	14.5	14.6	14.0	13.1	12.1	12.6	13.6						
35	13.5	13.0	12.0	11.4	12.8	14.7	15.1	14.2	12.4	11.3	11.9	13.4						
40	13.4	12.7	11.3	10.6	12.0	14.9	15.5	14.3	11.7	10.4	11.2	13.0						
45	13.4	12.4	10.5	9.60	11.3	14.9	15.4	14.4	10.9	9.39	10.4	12.7						
50	13.0	12.1	9.66	8.59	10.5	14.6	15.4	14.1	10.1	8.36	9.52	12.4						
55	12.6	11.6	8.69	7.51	9.59	14.1	15.0	13.6	9.25	7.28	8.52	11.8						
60	11.7	10.8	7.82	6.42	8.83	13.4	14.2	13.0	8.51	6.16	7.61	11.0						
65	10.7	9.95	7.02	5.26	8.04	12.5	13.3	12.1	7.74	4.99	6.80	10.1						
70	9.62	8.94	6.10	4.06	7.08	11.4	12.3	11.0	6.83	3.81	5.89	9.12						
75	8.57	7.65	5.06	2.85	6.09	10.2	11.1	9.94	5.88	2.63	4.86	7.81						
80	7.52	6.54	4.00	1.69	5.07	8.93	9.92	8.70	4.93	1.52	3.82	6.67						
85	6.70	5.66	3.07	0.82	4.13	7.90	9.06	7.74	4.01	0.64	2.91	5.79						
90	6.43	5.36	2.61	0.36	3.67	7.47	8.92	7.32	3.54	0.26	2.46	5.44						
95	6.63	5.52	2.52	0.37	3.54	7.63	9.01	7.41	3.43	0.26	2.44	5.61						
100	6.70	5.65	2.20	0.36	3.39	7.81	8.88	7.64	3.29	0.26	2.02	5.76						
105	6.59	5.27	2.02	0.35	3.30	7.81	8.68	7.63	3.25	0.26	1.87	5.52						
110	6.29	4.86	1.83	0.35	3.26	7.60	8.53	7.45	3.23	0.26	1.85	5.09						
115	5.98	4.47	1.77	0.35	3.23	7.00	8.27	6.89	3.17	0.26	1.83	4.76						
120	5.54	4.08	1.83	0.35	2.99	6.36	7.60	6.25	2.91	0.26	1.72	4.38						
125	5.03	3.74	1.55	0.35	2.66	5.81	6.79	5.71	2.59	0.26	1.45	3.82						
130	4.39	3.00	1.33	0.35	2.28	5.17	6.03	5.08	2.21	0.26	1.20	3.25						
135	3.78	2.44	1.15	0.35	1.93	4.50	5.26	4.40	1.85	0.28	1.00	2.74						
140	3.22	1.93	0.99	0.35	1.62	3.77	4.41	3.67	1.52	0.28	0.83	2.08						
145	2.53	1.53	0.83	0.35	1.34	2.96	3.56	2.90	1.25	0.28	0.69	1.57						
150	1.63	1.24	0.69	0.35	1.05	2.31	2.70	2.27	0.97	0.28	0.55	1.20						
155	1.51	0.96	0.57	0.35	0.82	1.78	2.04	1.74	0.75	0.28	0.44	0.97						
160	1.19	0.68	0.48	0.35	0.66	1.28	1.48	1.26	0.59	0.29	0.39	0.70						
165	0.77	0.50	0.42	0.35	0.53	0.82	0.86	0.82	0.45	0.30	0.38	0.49						
170	0.43	0.37	0.39	0.35	0.48	0.54	0.42	0.56	0.40	0.30	0.37	0.43						
175	0.36	0.34	0.36	0.35	0.46	0.45	0.35	0.46	0.38	0.31	0.36	0.40						
180	0.34	0.34	0.35	0.35	0.39	0.38	0.34	0.38	0.37	0.32	0.37	0.37						

C Range: 0 - 360DEG
C Interval: 30.0DEG
Test Speed: HIGH
Temperature:25.3DEG
Operators:HXJ
Test Date:2022-04-29

γ Range: 0 - 180DEG
γ Interval: 1.0DEG
Test System:EVERFINE GO-2000B_V1 SYSTEM V2.0.269
Humidity:65.0%
Test Distance:9.200m [K=1.0000]
Remarks:

Photometric Data Table [cd]

G/C	0.0	30.0	60.0	90.0	120.0	150.0	180.0	210.0	240.0	270.0
0.0	14.05	14.26	14.43	14.53	14.67	14.79	14.05	14.26	14.43	14.53
3.0	14.00	14.19	14.41	14.51	14.68	14.86	14.13	14.31	14.43	14.53
6.0	13.96	14.16	14.36	14.44	14.67	14.88	14.17	14.35	14.41	14.46
9.0	13.93	14.10	14.26	14.32	14.67	14.90	14.21	14.36	14.35	14.33
12.0	13.88	14.04	14.13	14.15	14.55	14.91	14.30	14.37	14.22	14.14
15.0	13.85	13.94	13.97	13.94	14.42	14.97	14.36	14.38	14.07	13.89
18.0	13.76	13.86	13.78	13.66	14.25	15.01	14.38	14.46	13.90	13.60
21.0	13.64	13.69	13.53	13.37	14.12	14.93	14.30	14.43	13.73	13.26
24.0	13.50	13.52	13.25	13.02	13.98	14.72	14.24	14.24	13.56	12.89
27.0	13.47	13.32	12.97	12.62	13.79	14.52	14.31	14.06	13.38	12.50
30.0	13.47	13.14	12.63	12.21	13.51	14.52	14.60	13.98	13.12	12.06
33.0	13.47	13.07	12.25	11.76	13.10	14.65	14.94	14.05	12.72	11.60
36.0	13.46	12.95	11.88	11.26	12.65	14.78	15.21	14.19	12.27	11.09
39.0	13.45	12.74	11.45	10.75	12.17	14.87	15.42	14.30	11.81	10.55
42.0	13.44	12.59	10.98	10.19	11.73	14.90	15.47	14.36	11.34	9.978
45.0	13.35	12.43	10.51	9.603	11.27	14.87	15.45	14.37	10.88	9.395
48.0	13.19	12.24	10.02	9.014	10.81	14.69	15.43	14.21	10.46	8.787
51.0	12.96	12.02	9.471	8.376	10.30	14.47	15.38	13.99	9.954	8.149
54.0	12.69	11.70	8.883	7.733	9.752	14.20	15.12	13.74	9.421	7.505
57.0	12.26	11.29	8.330	7.084	9.259	13.87	14.68	13.43	8.929	6.837
60.0	11.72	10.81	7.822	6.416	8.832	13.44	14.18	13.01	8.507	6.158
63.0	11.11	10.32	7.355	5.717	8.370	12.87	13.63	12.46	8.069	5.470
66.0	10.49	9.753	6.852	5.014	7.867	12.26	13.13	11.88	7.577	4.761
69.0	9.848	9.150	6.299	4.300	7.284	11.61	12.57	11.25	7.014	4.038
72.0	9.200	8.436	5.692	3.576	6.697	10.97	11.86	10.65	6.456	3.339
75.0	8.566	7.653	5.058	2.853	6.093	10.24	11.10	9.943	5.883	2.630
78.0	7.918	6.949	4.410	2.139	5.480	9.401	10.36	9.174	5.325	1.937
81.0	7.324	6.351	3.787	1.481	4.862	8.703	9.703	8.480	4.732	1.323
84.0	6.807	5.803	3.229	0.9884	4.289	8.055	9.180	7.892	4.174	0.7907
87.0	6.579	5.458	2.811	0.5120	3.871	7.664	8.926	7.519	3.753	0.4130
90.0	6.433	5.358	2.614	0.3625	3.674	7.468	8.921	7.318	3.543	0.2565
93.0	6.553	5.463	2.556	0.3643	3.594	7.539	9.016	7.322	3.487	0.2563
96.0	6.649	5.569	2.499	0.3662	3.518	7.670	8.991	7.458	3.412	0.2563
99.0	6.669	5.669	2.262	0.3590	3.418	7.795	8.890	7.609	3.332	0.2563
102.0	6.679	5.548	2.116	0.3518	3.342	7.840	8.780	7.660	3.257	0.2563
105.0	6.590	5.266	2.021	0.3518	3.297	7.815	8.684	7.633	3.247	0.2563
108.0	6.399	5.025	1.946	0.3518	3.276	7.694	8.609	7.549	3.239	0.2563
111.0	6.238	4.789	1.785	0.3518	3.257	7.533	8.483	7.388	3.231	0.2563
114.0	6.052	4.573	1.769	0.3518	3.238	7.160	8.347	7.027	3.191	0.2563
117.0	5.811	4.276	1.794	0.3518	3.152	6.703	8.055	6.615	3.090	0.2563
120.0	5.540	4.080	1.829	0.3518	2.991	6.362	7.597	6.248	2.909	0.2563
123.0	5.243	3.864	1.649	0.3518	2.815	6.040	7.090	5.921	2.733	0.2563
126.0	4.901	3.663	1.508	0.3518	2.594	5.673	6.662	5.580	2.517	0.2563
129.0	4.520	3.209	1.378	0.3518	2.358	5.311	6.190	5.218	2.281	0.2563
132.0	4.153	2.788	1.247	0.3518	2.132	4.924	5.718	4.816	2.060	0.2643
135.0	3.776	2.442	1.151	0.3518	1.931	4.497	5.255	4.399	1.849	0.2763
138.0	3.454	2.175	1.046	0.3518	1.735	4.060	4.742	3.966	1.643	0.2776
141.0	3.092	1.824	0.9553	0.3518	1.579	3.602	4.235	3.505	1.482	0.2789
144.0	2.700	1.618	0.8697	0.3518	1.413	3.115	3.737	3.057	1.316	0.2801
147.0	2.243	1.417	0.7893	0.3518	1.222	2.683	3.209	2.634	1.150	0.2814
150.0	1.630	1.236	0.6889	0.3518	1.046	2.306	2.702	2.272	0.9693	0.2827
153.0	1.638	1.055	0.6035	0.3518	0.8901	1.974	2.290	1.946	0.8086	0.2840
156.0	1.418	0.9142	0.5580	0.3518	0.7845	1.673	1.924	1.649	0.7033	0.2852
159.0	1.267	0.7533	0.4978	0.3518	0.6939	1.391	1.572	1.368	0.6079	0.2865
162.0	1.001	0.5926	0.4525	0.3518	0.6084	1.075	1.219	1.066	0.5276	0.2965
165.0	0.7747	0.5021	0.4172	0.3518	0.5330	0.8237	0.8637	0.8248	0.4472	0.2965
168.0	0.5786	0.3920	0.3971	0.3518	0.4926	0.6529	0.6473	0.6588	0.4318	0.2985
171.0	0.4073	0.3568	0.3821	0.3518	0.4725	0.5172	0.4077	0.5130	0.3919	0.3038
174.0	0.3720	0.3467	0.3620	0.3518	0.4624	0.4541	0.3658	0.4625	0.3819	0.3077
177.0	0.3519	0.3418	0.3569	0.3518	0.4423	0.4419	0.3467	0.4473	0.3669	0.3116
180.0	0.3418	0.3418	0.3518	0.3518	0.3870	0.3820	0.3418	0.3769	0.3669	0.3216
G/C	300.0	330.0								
0.0	14.67	14.79								
3.0	14.58	14.73								
6.0	14.50	14.67								
9.0	14.38	14.61								
12.0	14.24	14.53								
15.0	14.06	14.40								
18.0	13.85	14.32								
21.0	13.57	14.14								
24.0	13.27	13.96								
27.0	12.97	13.74								
30.0	12.61	13.55								

C Range: 0 - 360DEG
 C Interval: 30.0DEG
 Test Speed: HIGH
 Temperature: 25.3DEG
 Operators: HXJ
 Test Date: 2022-04-29

γ Range: 0 - 180DEG
 γ Interval: 1.0DEG
 Test System: EVERFINE GO-2000B_V1 SYSTEM V2.0.269
 Humidity: 65.0%
 Test Distance: 9.200m [K=1.0000]
 Remarks:

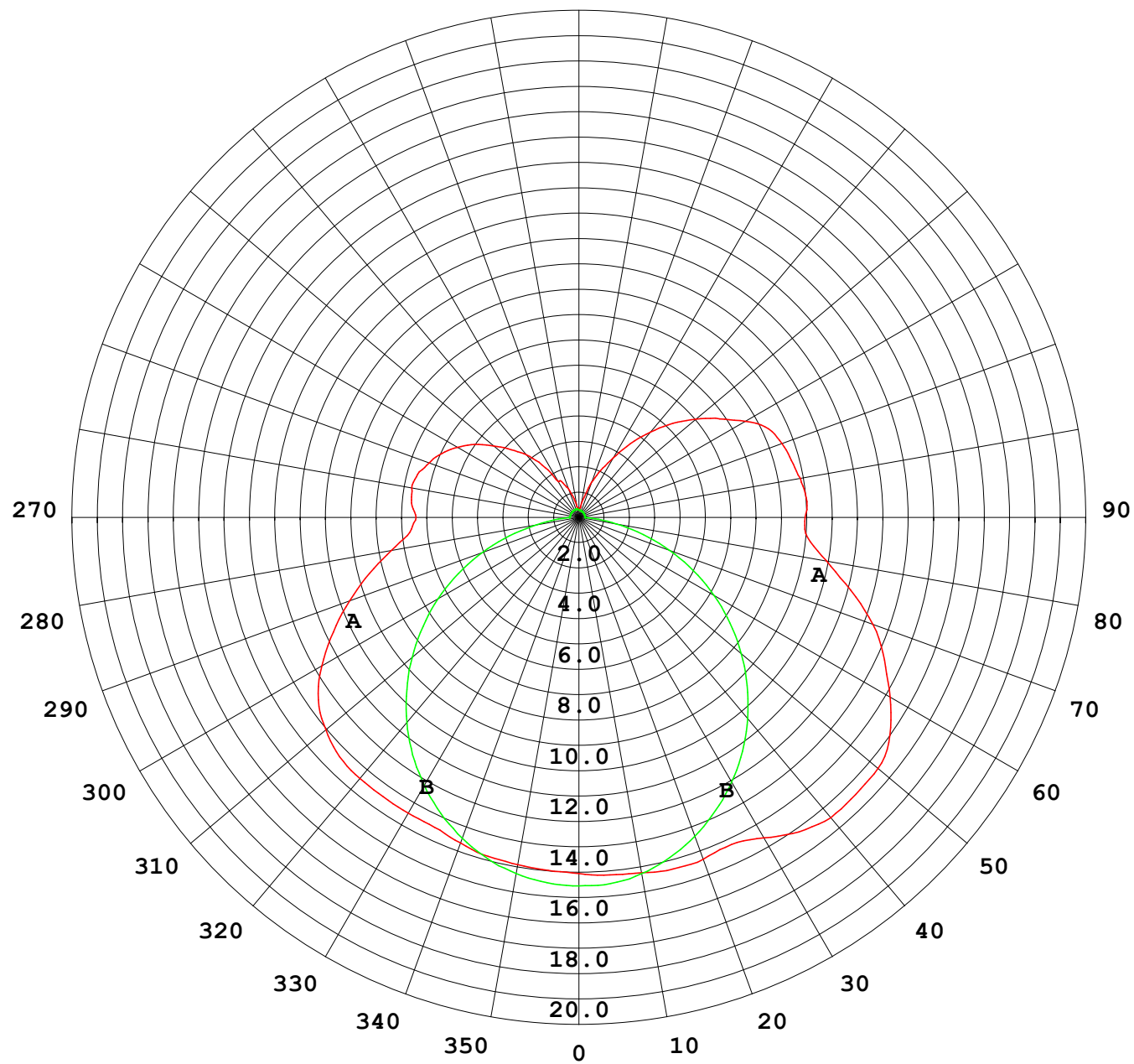
Photometric Data Table [cd]

33.0	12.23	13.48
36.0	11.81	13.32
39.0	11.39	13.08
42.0	10.89	12.91
45.0	10.39	12.75
48.0	9.884	12.54
51.0	9.325	12.28
54.0	8.718	11.93
57.0	8.145	11.51
60.0	7.607	11.04
63.0	7.114	10.54
66.0	6.642	9.953
69.0	6.079	9.324
72.0	5.476	8.612
75.0	4.863	7.812
78.0	4.235	7.088
81.0	3.626	6.460
84.0	3.069	5.927
87.0	2.632	5.589
90.0	2.457	5.443
93.0	2.443	5.513
96.0	2.275	5.659
99.0	2.060	5.769
102.0	1.915	5.740
105.0	1.867	5.519
108.0	1.847	5.223
111.0	1.850	4.986
114.0	1.854	4.815
117.0	1.804	4.629
120.0	1.723	4.378
123.0	1.557	4.042
126.0	1.357	3.720
129.0	1.236	3.379
132.0	1.115	3.052
135.0	0.9997	2.740
138.0	0.8941	2.388
141.0	0.7937	1.976
144.0	0.7284	1.669
147.0	0.6430	1.413
150.0	0.5525	1.202
153.0	0.4673	1.051
156.0	0.4422	0.9451
159.0	0.3869	0.7595
162.0	0.3818	0.6037
165.0	0.3768	0.4929
168.0	0.3718	0.4474
171.0	0.3668	0.4172
174.0	0.3618	0.3971
177.0	0.3568	0.3820
180.0	0.3719	0.3719

C Range: 0 - 360DEG
C Interval: 30.0DEG
Test Speed: HIGH
Temperature:25.3DEG
Operators:HXJ
Test Date:2022-04-29

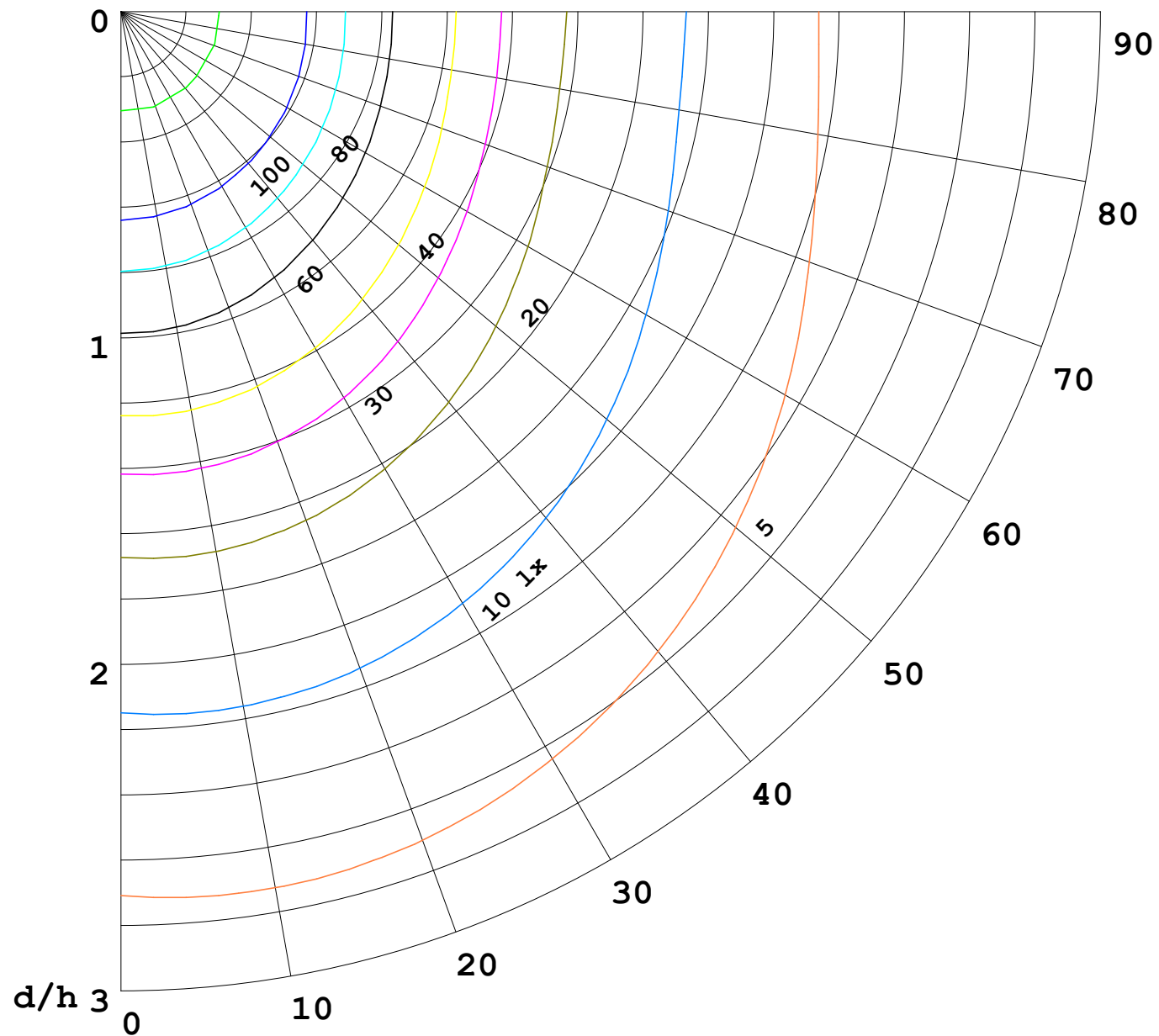
γ Range: 0 - 180DEG
γ Interval: 1.0DEG
Test System:EVERFINE GO-2000B_V1 SYSTEM V2.0.269
Humidity:65.0%
Test Distance:9.200m [K=1.0000]
Remarks:

I (cd)



1000 lm

$\kappa = 1$



F = 5000 lm
 K = 0.7
 Hcc = 0.0 m
 Hfc = 0.0 m
 Eave = 100 lx

	Pcc	Pw	Pfc
—	70	50	30
—	50	30	20

