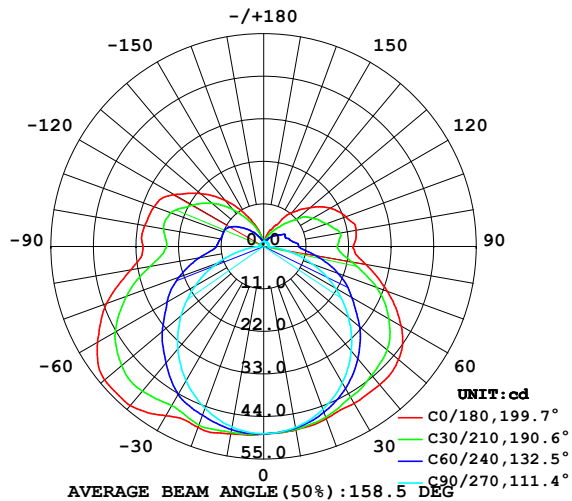


## LUMINAIRE PHOTOMETRIC TEST REPORT

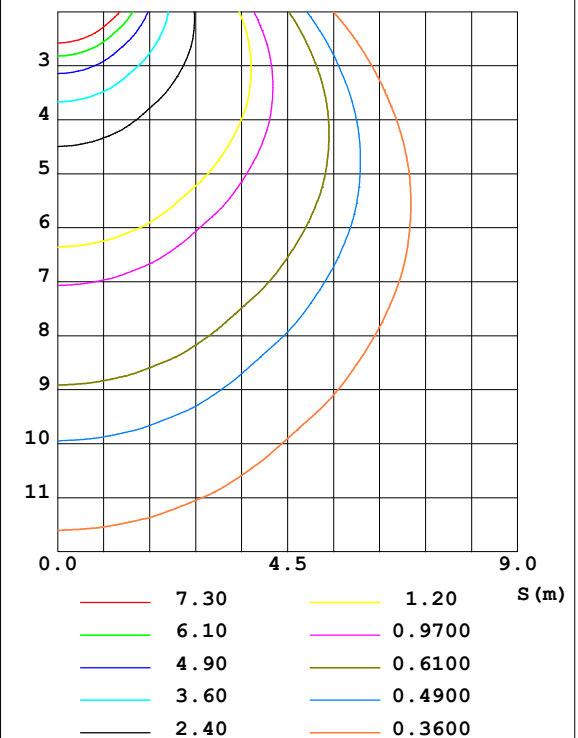
Test:U:24.00V I:0.2365A P:5.676W PF:1.000 Lamp Flux:274.816x1 lm		
NAME: SF18-24V-5050-70-SPI4-RGBW-4000-G	TYPE: 硅胶	WEIGHT:
DIM.: 16.5mm*16.5mm	SPEC.:	SERIAL No.:2022042901
MFR.: OLYMPIA	SUR.:1*0.0165	PROTECTION ANGLE:

DATA OF LAMP		PHOTOMETRIC DATA Eff: 48.42 lm/W			
MODEL	5050	I <sub>max</sub> (cd)	53.83	S/MH (C0/180)	1.49
NOMINAL POWER (W)	4.5	LOR (%)	100.0	S/MH (C90/270)	1.25
RATED VOLTAGE (V)	24	TOTAL FLUX (lm)	274.81	η UP, DN (C0-180)	12.2, 36.8
NOMINAL FLUX (lm)	274.816	CIE CLASS	SEMI-D.	η UP, DN (C180-360)	13.2, 37.8
LAMPS INSIDE	1	η up (%)	25.5	CIBSE SHR NOM	1.50
TEST VOLTAGE (V)	24.0	η down (%)	74.5	CIBSE SHR MAX	1.55

LUMINOUS INTENSITY DISTRIBUTION DIAGRAM



C0 PLANE ISOLUX DIAGRAM (UNIT:lx)



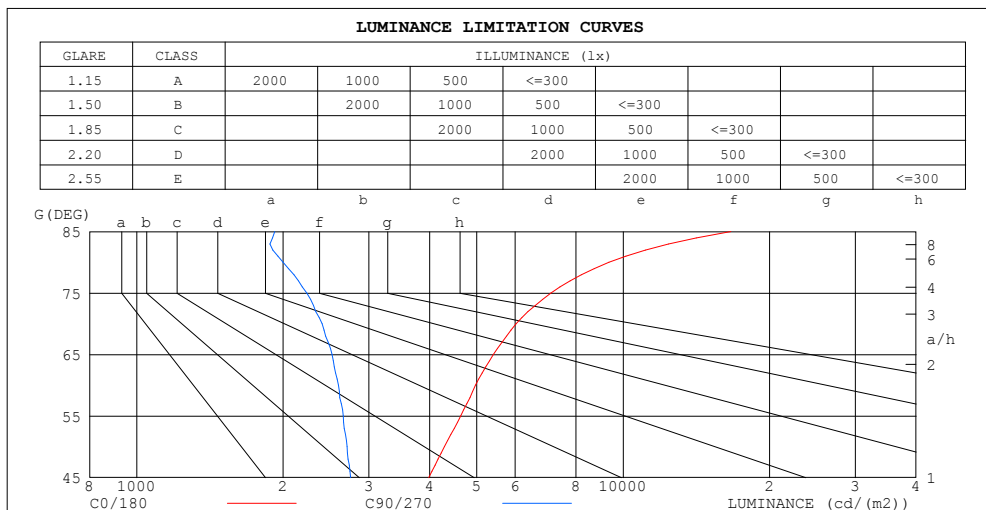
C Range: 0 - 360DEG  
C Interval: 30.0DEG  
Test Speed: HIGH  
Temperature: 25.3DEG  
Operators: HXJ  
Test Date: 2022-04-29

γ Range: 0 - 180DEG  
γ Interval: 1.0DEG  
Test System: EVERFINE GO-2000B\_V1 SYSTEM V2.0.269  
Humidity: 65.0%  
Test Distance: 9.200m [K=1.0000]  
Remarks:

ZONAL FLUX DIAGRAM  
AND LUMINANCE LIMITATION CURVES

ZONAL FLUX DIAGRAM:

$\gamma$	C0	C45	C90	C135	C180	C225	C270	C315	$\gamma$	$\Phi$ zone	$\Phi$ total	%lum, lamp
10	48.19	47.89	47.51	48.52	49.17	48.46	47.40	47.72	0- 10	4.611	4.611	1.68,1.68
20	47.37	46.29	44.82	47.93	49.77	47.80	44.47	46.01	10- 20	13.47	18.08	6.58,6.58
30	46.84	43.68	40.66	46.03	50.56	45.89	40.13	43.31	20- 30	21.14	39.23	14.3,14.3
40	46.68	40.66	35.25	44.30	53.71	44.08	34.53	40.15	30- 40	27.37	66.59	24.2,24.2
50	45.50	37.05	28.71	41.29	53.70	41.10	27.92	36.41	40- 50	31.56	98.15	35.7,35.7
60	41.01	31.84	21.45	36.77	49.60	36.60	20.53	31.13	50- 60	32.67	130.8	47.6,47.6
70	34.00	25.89	13.57	30.65	43.26	30.58	12.80	25.27	60- 70	30.41	161.2	58.7,58.7
80	26.80	18.39	5.728	23.24	34.93	23.36	5.182	17.91	70- 80	24.93	186.2	67.7,67.7
90	23.11	14.07	1.221	18.51	31.19	18.66	1.071	13.66	80- 90	18.70	204.9	74.5,74.5
100	24.26	13.86	1.250	18.69	31.24	18.84	1.099	13.46	90-100	17.08	221.9	80.8,80.8
110	22.62	11.79	1.251	18.11	30.18	18.31	1.100	11.85	100-110	16.06	238.0	86.6,86.6
120	19.85	10.54	1.261	15.56	26.82	15.70	1.091	10.49	110-120	13.71	251.7	91.6,91.6
130	15.67	7.608	1.271	12.46	21.30	12.56	1.091	7.541	120-130	10.29	262.0	95.3,95.3
140	11.49	5.145	1.277	9.027	15.63	8.980	1.106	5.080	130-140	6.692	268.7	97.8,97.8
150	6.444	3.399	1.285	5.678	9.724	5.644	1.141	3.089	140-150	3.674	272.4	99.1,99.1
160	4.219	2.120	1.292	3.334	5.267	3.250	1.191	1.956	150-160	1.690	274.1	99.7,99.7
170	1.554	1.440	1.312	1.844	1.653	1.782	1.248	1.401	160-170	0.6085	274.7	99.9,99.9
180	1.287	1.322	1.332	1.370	1.312	1.367	1.282	1.339	170-180	0.1393	274.8	100,100
DEG	LUMINOUS INTENSITY:cd									UNIT:lm		



LUMINANCE cd/(m2)		
G (DEG)	C0/180	C90/270
85	16649	1922
80	9353	1999
75	7107	2237
70	6024	2405
65	5407	2521
60	4971	2600
55	4633	2658
50	4290	2707
45	3986	2752

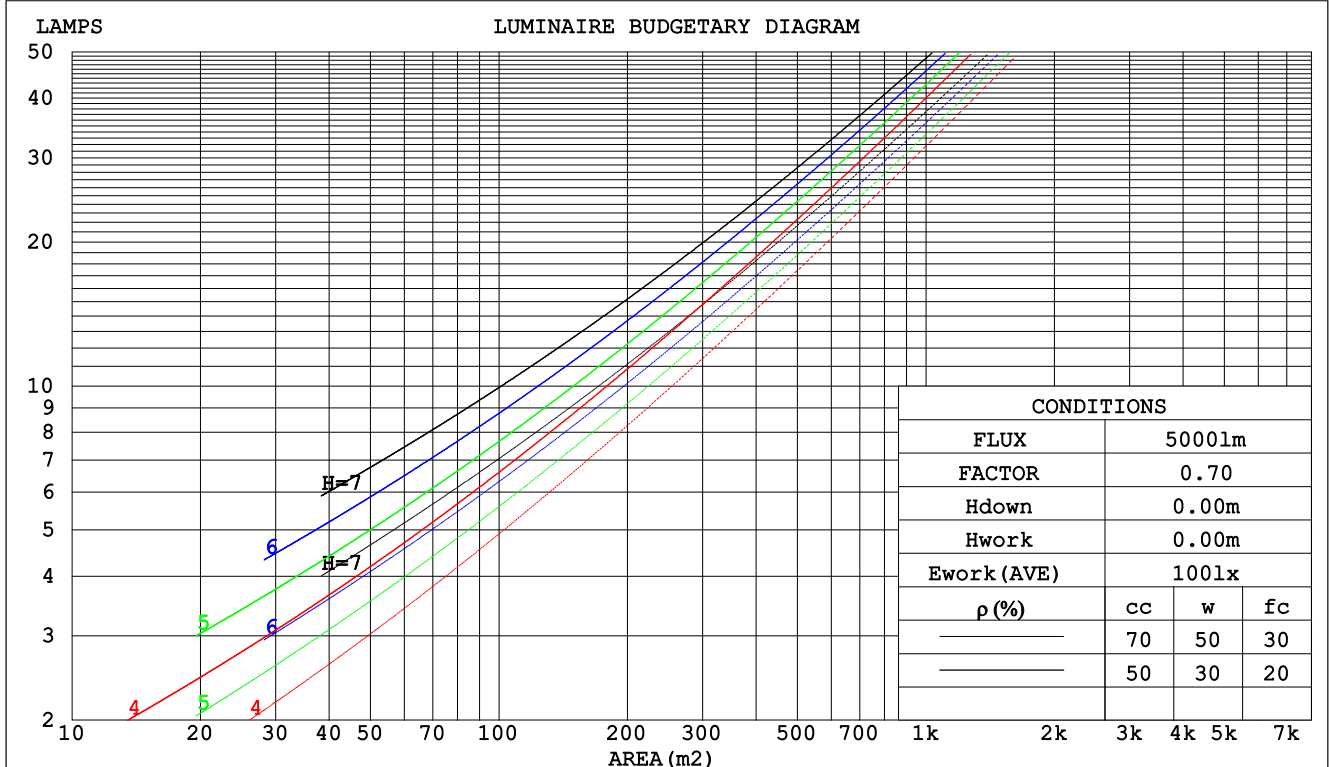
C Range: 0 - 360DEG  
C Interval: 30.0DEG  
Test Speed: HIGH  
Temperature:25.3DEG  
Operators:HXJ  
Test Date:2022-04-29

$\gamma$  Range: 0 - 180DEG  
 $\gamma$  Interval: 1.0DEG  
Test System:EVERFINE GO-2000B\_V1 SYSTEM V2.0.269  
Humidity:65.0%  
Test Distance:9.200m [K=1.0000]  
Remarks:

## CU AND LUMINAIRE BUDGETARY ESTIMATE DIAGRAM

Test:U:24.00V I:0.2365A P:5.676W PF:1.000 Lamp Flux:274.816x1 lm		
NAME: SF18-24V-5050-70-SPI4-RGBW-4000-G	TYPE: 硅胶	WEIGHT:
DIM.: 16.5mm*16.5mm	SPEC.:	SERIAL No.:2022042901
MFR.: OLYMPIA	SUR.:1*0.0165	PROTECTION ANGLE:

$\rho_{cc}$	80%			70%			50%			30%			10%			0
$\rho_w$	50%	30%	10%	50%	30%	10%	50%	30%	10%	50%	30%	10%	50%	30%	10%	0
$\rho_{fc}$	20%			20%			20%			20%			20%			0
RCR	RCR:Room Cavity Ratio						Coefficients of Utilization(CU)									
0.0	1.13	1.13	1.13	1.07	1.07	1.07	.97	.97	.97	.87	.87	.87	.79	.79	.79	.75
1.0	.94	.89	.84	.89	.85	.80	.80	.77	.73	.72	.69	.66	.64	.62	.60	.56
2.0	.80	.73	.66	.76	.69	.63	.68	.63	.58	.61	.57	.53	.55	.51	.48	.44
3.0	.69	.61	.53	.66	.58	.51	.59	.53	.47	.53	.48	.43	.47	.43	.39	.36
4.0	.61	.51	.44	.58	.49	.43	.52	.45	.39	.47	.41	.36	.42	.37	.33	.30
5.0	.54	.44	.37	.51	.43	.36	.46	.39	.33	.41	.35	.31	.37	.32	.28	.25
6.0	.48	.39	.32	.46	.37	.31	.41	.34	.29	.37	.31	.26	.33	.28	.24	.22
7.0	.43	.34	.28	.41	.33	.27	.37	.30	.25	.34	.28	.23	.30	.25	.21	.19
8.0	.39	.31	.25	.37	.29	.24	.34	.27	.22	.31	.25	.20	.28	.23	.19	.17
9.0	.36	.27	.22	.34	.26	.21	.31	.24	.20	.28	.22	.18	.26	.21	.17	.15
10.0	.33	.25	.20	.31	.24	.19	.29	.22	.18	.26	.20	.16	.24	.19	.15	.13



C Range: 0 - 360DEG  
C Interval: 30.0DEG  
Test Speed: HIGH  
Temperature:25.3DEG  
Operators:HXJ  
Test Date:2022-04-29

$\gamma$  Range: 0 - 180DEG  
 $\gamma$  Interval: 1.0DEG  
Test System:EVERFINE GO-2000B\_V1 SYSTEM V2.0.269  
Humidity:65.0%  
Test Distance:9.200m [K=1.0000]  
Remarks:

## WEC AND CCEC

Test:U:24.00V I:0.2365A P:5.676W PF:1.000 Lamp Flux:274.816x1 lm		
NAME: SF18-24V-5050-70-SPI4-RGBW-4000-G	TYPE: 硅胶	WEIGHT:
DIM.: 16.5mm*16.5mm	SPEC.:	SERIAL No.:2022042901
MFR.: OLYMPIA	SUR.:1*0.0165	PROTECTION ANGLE:

pcc	80%			70%			50%			30%			10%			0	
pw	50%	30%	10%	50%	30%	10%	50%	30%	10%	50%	30%	10%	50%	30%	10%	0	
pfc	20%			20%			20%			20%			20%			0	
RCR	RCR:Room Cavity Ratio						Wall Exitance Coefficients(WEC)										
0.0																	
1.0	.379	.216	.068	.364	.208	.066	.336	.193	.062	.310	.179	.057	.287	.166	.054		
2.0	.330	.181	.055	.316	.174	.054	.291	.162	.050	.267	.150	.047	.246	.139	.044		
3.0	.294	.156	.047	.281	.151	.045	.258	.140	.043	.237	.130	.040	.217	.120	.037		
4.0	.265	.137	.040	.253	.133	.039	.232	.123	.037	.213	.114	.034	.195	.106	.032		
5.0	.241	.123	.036	.230	.118	.034	.211	.110	.032	.193	.102	.030	.177	.094	.028		
6.0	.221	.111	.032	.211	.107	.031	.194	.099	.029	.177	.092	.027	.162	.085	.025		
7.0	.203	.101	.029	.195	.097	.028	.179	.090	.026	.164	.084	.024	.149	.078	.023		
8.0	.189	.092	.026	.181	.089	.025	.166	.083	.024	.152	.077	.022	.139	.071	.021		
9.0	.176	.085	.024	.169	.082	.023	.155	.077	.022	.142	.071	.020	.130	.066	.019		
10.0	.164	.079	.022	.158	.076	.021	.145	.071	.020	.133	.066	.019	.122	.061	.018		

pcc	80%			70%			50%			30%			10%			0
pw	50%	30%	10%	50%	30%	10%	50%	30%	10%	50%	30%	10%	50%	30%	10%	0
pfc	20%			20%			20%			20%			20%			0
RCR	RCR:Room Cavity Ratio						Ceiling Cavity Exitance Coefficients(CCEC)									
0.0	.384	.384	.384	.329	.329	.329	.224	.224	.224	.129	.129	.129	.041	.041	.041	
1.0	.381	.351	.324	.326	.301	.279	.223	.207	.193	.128	.120	.112	.041	.039	.036	
2.0	.374	.329	.290	.320	.283	.251	.220	.196	.175	.127	.114	.103	.041	.037	.033	
3.0	.367	.312	.269	.315	.269	.233	.216	.187	.163	.125	.109	.096	.040	.035	.032	
4.0	.359	.300	.255	.308	.259	.221	.212	.181	.156	.123	.106	.092	.039	.034	.030	
5.0	.352	.290	.245	.302	.251	.213	.208	.176	.151	.121	.103	.089	.039	.034	.029	
6.0	.345	.283	.238	.296	.245	.207	.204	.171	.147	.119	.101	.087	.038	.033	.029	
7.0	.338	.276	.233	.290	.239	.203	.201	.168	.144	.117	.099	.086	.038	.032	.028	
8.0	.331	.271	.229	.285	.235	.200	.197	.165	.142	.115	.097	.085	.037	.032	.028	
9.0	.325	.266	.226	.280	.231	.197	.194	.162	.140	.113	.096	.084	.037	.031	.028	
10.0	.319	.262	.224	.275	.227	.195	.191	.160	.139	.111	.095	.083	.036	.031	.027	

C Range: 0 - 360DEG  
 C Interval: 30.0DEG  
 Test Speed: HIGH  
 Temperature:25.3DEG  
 Operators:HXJ  
 Test Date:2022-04-29

γ Range: 0 - 180DEG  
 γ Interval: 1.0DEG  
 Test System:EVERFINE GO-2000B\_V1 SYSTEM V2.0.269  
 Humidity:65.0%  
 Test Distance:9.200m [K=1.0000]  
 Remarks:

### Uncorrected UGR Table

Test:U:24.00V I:0.2365A P:5.676W PF:1.000 Lamp Flux:274.816x1 lm										
NAME: SF18-24V-5050-70-SPI4-RGBW-4000-G						TYPE:硅胶		WEIGHT:		
DIM.: 16.5mm*16.5mm						SPEC.:		SERIAL No.:2022042901		
MFR.: OLYMPIA						SUR.:1*0.0165		PROTECTION ANGLE:		
ceiling/cavity	0.7	0.7	0.5	0.5	0.3	0.7	0.7	0.5	0.5	0.3
walls	0.5	0.3	0.5	0.3	0.3	0.5	0.3	0.5	0.3	0.3
working plane	0.2	0.2	0.2	0.2	0.2	0.2	0.2	0.2	0.2	0.2
Room dimensions	Viewed crosswise					Viewed endwise				
x = 2H y = 2H	17.0	18.3	17.6	18.9	19.6	14.2	15.5	14.8	16.1	16.9
3H	19.6	20.8	20.2	21.4	22.2	15.9	17.0	16.5	17.7	18.4
4H	20.9	22.0	21.6	22.7	23.5	16.5	17.6	17.2	18.3	19.1
6H	22.3	23.4	23.0	24.1	24.8	17.0	18.0	17.6	18.7	19.5
8H	23.1	24.1	23.8	24.8	25.6	17.1	18.1	17.8	18.8	19.6
12H	24.0	25.0	24.7	25.7	26.5	17.2	18.2	17.9	18.9	19.7
4H 2H	17.5	18.6	18.2	19.3	20.1	15.5	16.6	16.2	17.3	18.1
3H	20.3	21.3	21.0	22.0	22.8	17.3	18.3	18.0	19.0	19.8
4H	21.8	22.7	22.5	23.5	24.3	18.1	19.0	18.8	19.7	20.6
6H	23.5	24.3	24.2	25.0	25.9	18.8	19.6	19.5	20.3	21.2
8H	24.4	25.1	25.1	25.9	26.8	19.0	19.7	19.7	20.5	21.4
12H	25.4	26.1	26.2	26.9	27.8	19.2	19.9	19.9	20.6	21.5
8H 4H	22.1	22.9	22.8	23.6	24.5	19.1	19.9	19.9	20.6	21.5
6H	24.0	24.6	24.8	25.4	26.4	20.1	20.7	20.9	21.5	22.4
8H	25.1	25.7	25.9	26.5	27.4	20.5	21.1	21.3	21.9	22.8
12H	26.4	26.9	27.2	27.7	28.7	20.9	21.4	21.7	22.2	23.1
12H 4H	22.1	22.8	22.9	23.6	24.5	19.4	20.1	20.2	20.9	21.8
6H	24.1	24.7	24.9	25.5	26.4	20.6	21.2	21.4	22.0	22.9
8H	25.3	25.8	26.1	26.6	27.6	21.2	21.7	22.0	22.5	23.4
Variations with the observer position at spacings:										
S = 1.0H	+ 0.1 / - 0.1					+ 0.1 / - 0.1				
1.5H	+ 0.2 / - 0.2					+ 0.2 / - 0.3				
2.0H	+ 0.2 / - 0.3					+ 0.2 / - 0.4				

CIE Pub.117 Corrected 274.8 lm Total Lamp Luminous Flux. (8log(F/F0) = -4.5)

C Range: 0 - 360DEG  
C Interval: 30.0DEG  
Test Speed: HIGH  
Temperature:25.3DEG  
Operators:HXJ  
Test Date:2022-04-29

γ Range: 0 - 180DEG  
γ Interval: 1.0DEG  
Test System:EVERFINE GO-2000B\_V1 SYSTEM V2.0.269  
Humidity:65.0%  
Test Distance:9.200m [K=1.0000]  
Remarks:

### UTILIZATION FACTORS TABLE

Test:U:24.00V I:0.2365A P:5.676W PF:1.000 Lamp Flux:274.816x1 lm		
NAME: SF18-24V-5050-70-SPI4-RGBW-4000-G	TYPE: 硅胶	WEIGHT:
DIM.: 16.5mm*16.5mm	SPEC.:	SERIAL No.:2022042901
MFR.: OLYMPIA	SUR.:1*0.0165	PROTECTION ANGLE:

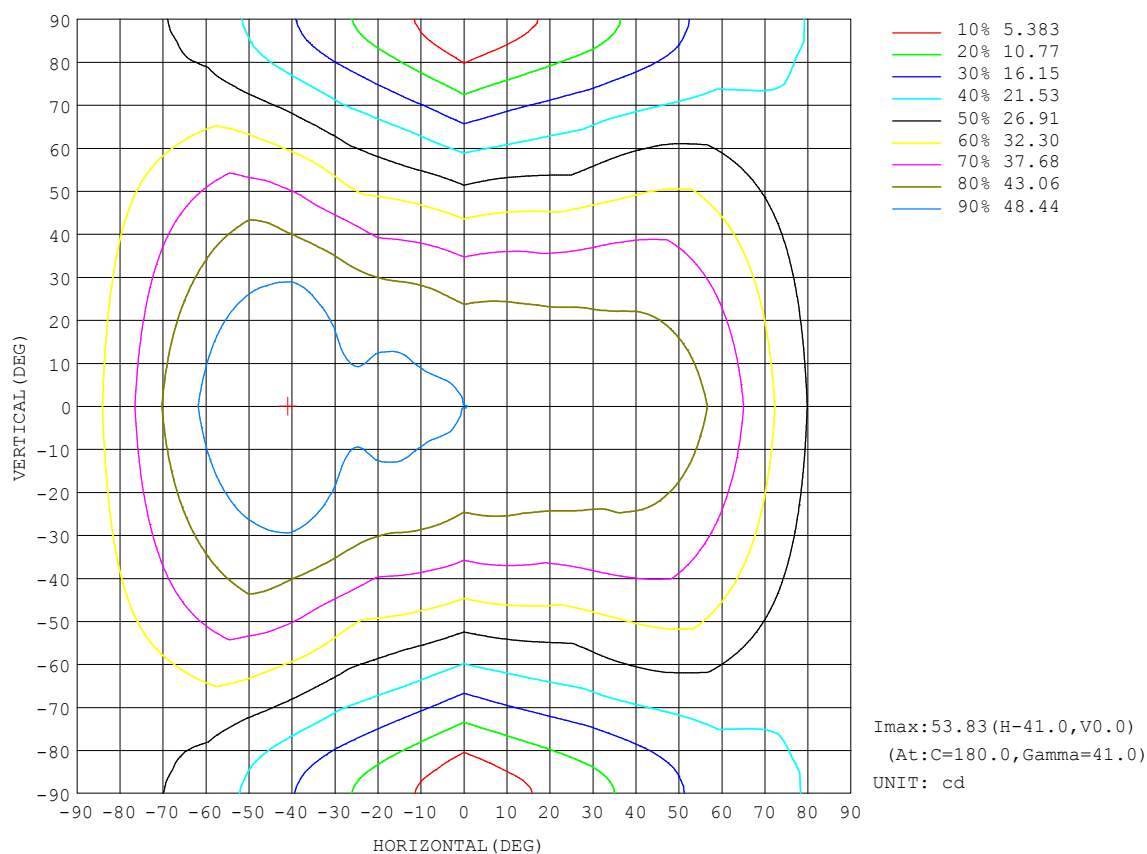
REFLECTANCE										
Ceiling	0.8	0.8	0.8	0.7	0.7	0.7	0.5	0.5	0.5	0
Walls	0.7	0.5	0.3	0.7	0.5	0.3	0.7	0.5	0.3	0
Working plane	0.2	0.2	0.2	0.2	0.2	0.2	0.2	0.2	0.2	0
ROOM INDEX	UTILIZATION FACTORS (PERCENT) $k(RI) \times RCR = 5$									
$k = 0.60$	45	32	25	44	32	25	41	31	24	17
0.80	54	41	33	52	40	32	49	38	31	23
1.00	62	49	40	59	47	39	55	47	38	28
1.25	69	56	47	66	54	46	61	51	44	33
1.50	74	61	53	71	60	51	65	56	49	37
2.00	81	70	62	78	68	60	71	63	56	43
2.50	86	76	68	82	73	65	75	67	61	47
3.00	90	80	73	86	77	70	78	71	65	50
4.00	95	87	80	90	83	77	82	76	71	55
5.00	98	91	85	93	87	81	84	79	75	58
ROOM INDEX	UF(total)									Direct
According to DIN EN 13032-2 2004			Suspended					SHRNOM = 1.25		

C Range: 0 - 360DEG  
C Interval: 30.0DEG  
Test Speed: HIGH  
Temperature:25.3DEG  
Operators:HXJ  
Test Date:2022-04-29

$\gamma$  Range: 0 - 180DEG  
 $\gamma$  Interval: 1.0DEG  
Test System:EVERFINE GO-2000B\_V1 SYSTEM V2.0.269  
Humidity:65.0%  
Test Distance:9.200m [K=1.0000]  
Remarks:

## ISOCANDELA DIAGRAM

Test:U:24.00V I:0.2365A P:5.676W PF:1.000 Lamp Flux:274.816x1 lm		
NAME: SF18-24V-5050-70-SPI4-RGBW-4000-G	TYPE: 硅胶	WEIGHT:
DIM.: 16.5mm*16.5mm	SPEC.:	SERIAL No.:2022042901
MFR.: OLYMPIA	SUR.:1*0.0165	PROTECTION ANGLE:

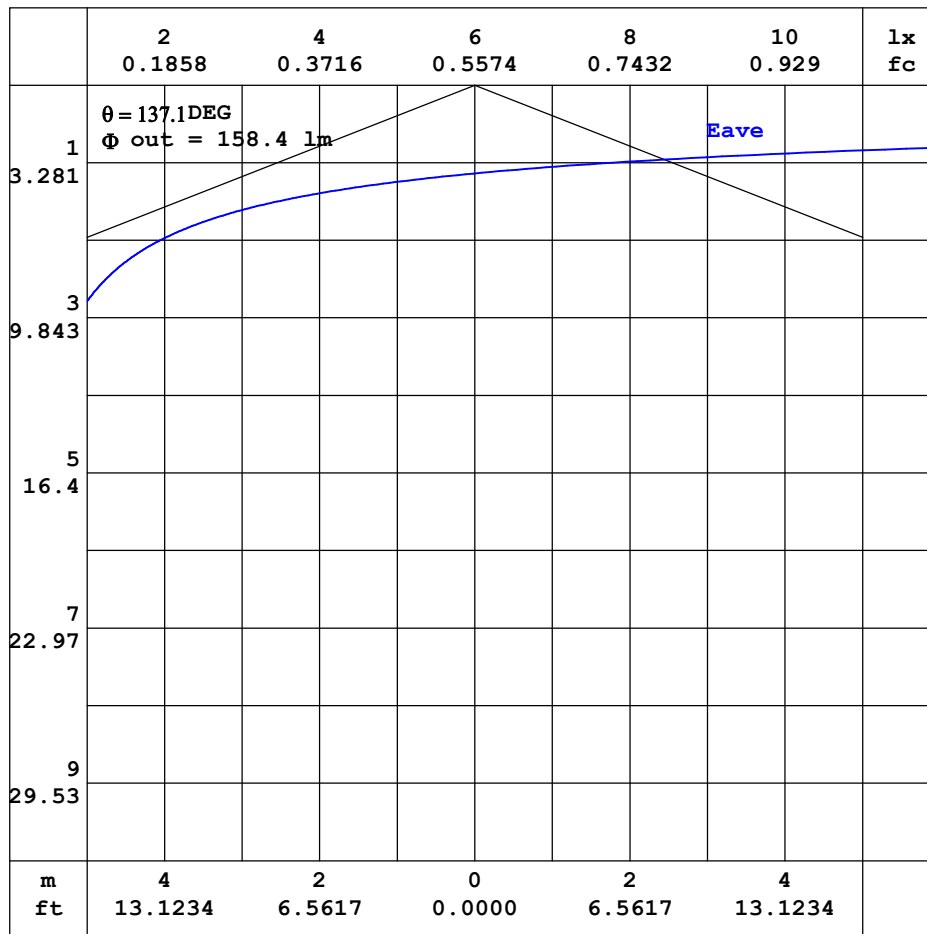


C Range: 0 - 360DEG  
C Interval: 30.0DEG  
Test Speed: HIGH  
Temperature:25.3DEG  
Operators:HXJ  
Test Date:2022-04-29

$\gamma$  Range: 0 - 180DEG  
 $\gamma$  Interval: 1.0DEG  
Test System:EVERFINE GO-2000B\_V1 SYSTEM V2.0.269  
Humidity:65.0%  
Test Distance:9.200m [K=1.0000]  
Remarks:

## AAI CURVES

Test:U:24.00V I:0.2365A P:5.676W PF:1.000 Lamp Flux:274.816x1 lm		
NAME: SF18-24V-5050-70-SPI4-RGBW-4000-G	TYPE: 硅胶	WEIGHT:
DIM.: 16.5mm*16.5mm	SPEC.:	SERIAL No.:2022042901
MFR.: OLYMPIA	SUR.:1*0.0165	PROTECTION ANGLE:



Note: The Curves indicate the illuminated area and the average illumination when the luminaire is at different distance.

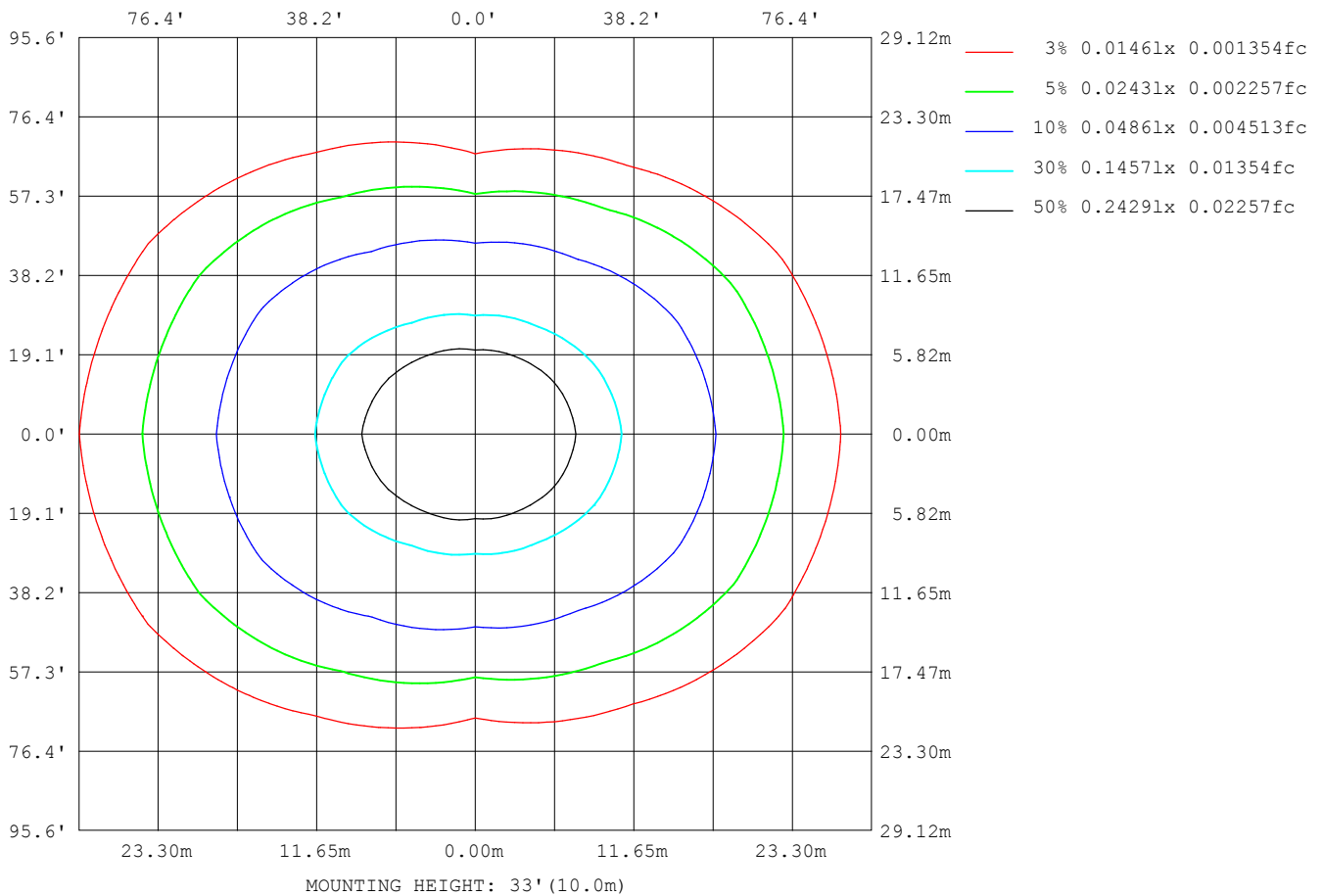
C Range: 0 - 360DEG  
 C Interval: 30.0DEG  
 Test Speed: HIGH  
 Temperature: 25.3DEG  
 Operators: HXJ  
 Test Date: 2022-04-29

$\gamma$  Range: 0 - 180DEG  
 $\gamma$  Interval: 1.0DEG  
 Test System: EVERFINE GO-2000B\_V1 SYSTEM V2.0.269  
 Humidity: 65.0%  
 Test Distance: 9.200m [K=1.0000]  
 Remarks:



## ISOLUX DIAGRAM

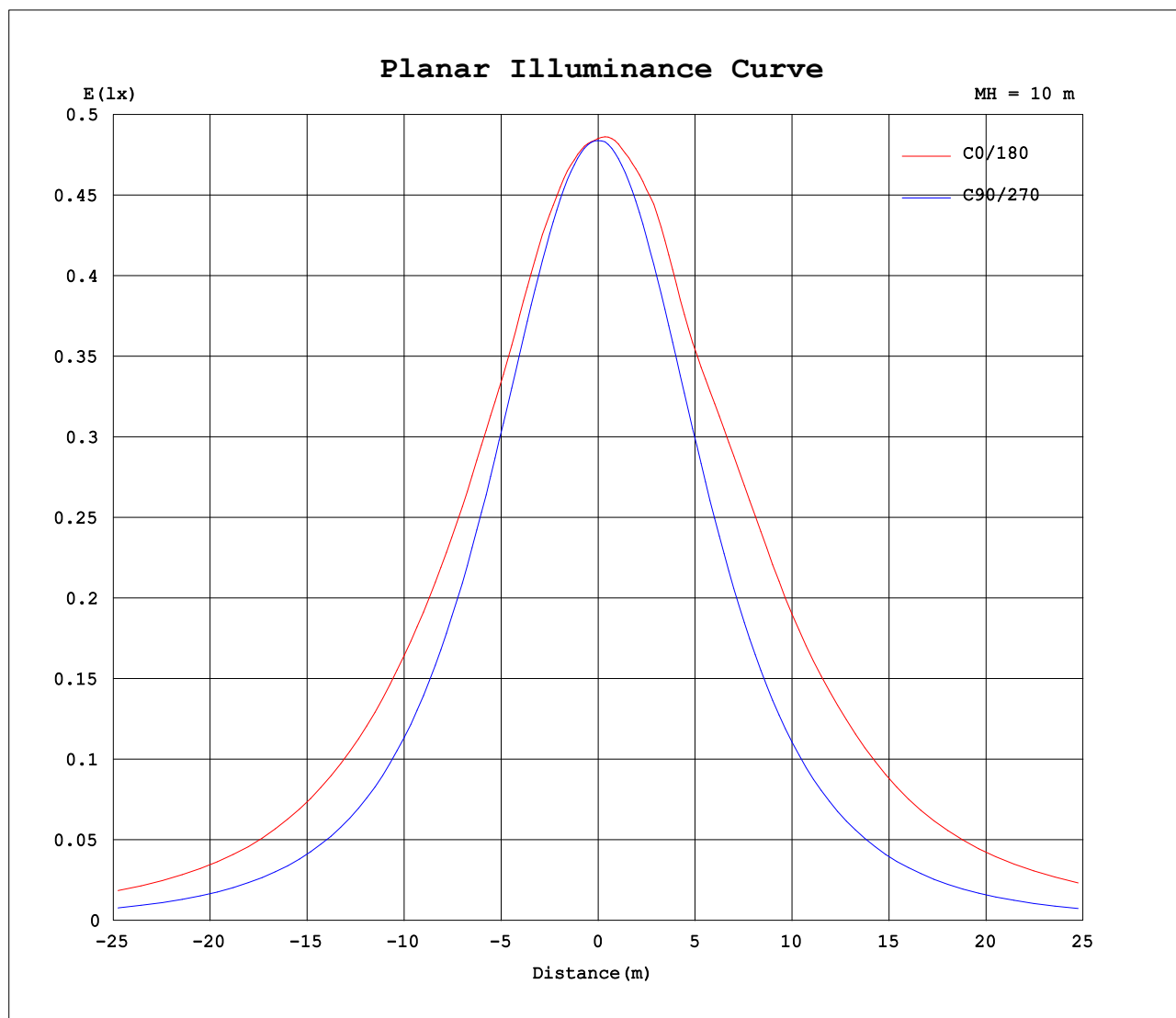
Test:U:24.00V I:0.2365A P:5.676W PF:1.000 Lamp Flux:274.816x1 lm		
NAME: SF18-24V-5050-70-SPI4-RGBW-4000-G	TYPE: 硅胶	WEIGHT:
DIM.: 16.5mm*16.5mm	SPEC.:	SERIAL No.:2022042901
MFR.: OLYMPIA	SUR.:1*0.0165	PROTECTION ANGLE:



C Range: 0 - 360DEG  
C Interval: 30.0DEG  
Test Speed: HIGH  
Temperature:25.3DEG  
Operators:HXJ  
Test Date:2022-04-29

$\gamma$  Range: 0 - 180DEG  
 $\gamma$  Interval: 1.0DEG  
Test System:EVERFINE GO-2000B\_V1 SYSTEM V2.0.269  
Humidity:65.0%  
Test Distance:9.200m [K=1.0000]  
Remarks:

## Planar Illuminance Curve



C Range: 0 - 360DEG  
C Interval: 30.0DEG  
Test Speed: HIGH  
Temperature: 25.3DEG  
Operators: HXJ  
Test Date: 2022-04-29

$\gamma$  Range: 0 - 180DEG  
 $\gamma$  Interval: 1.0DEG  
Test System: EVERFINE GO-2000B\_V1 SYSTEM V2.0.269  
Humidity: 65.0%  
Test Distance: 9.200m [K=1.0000]  
Remarks:

## LUMINOUS DISTRIBUTION INTENSITY DATA

Test:U:24.00V I:0.2365A P:5.676W PF:1.000 Lamp Flux:274.816x1 lm											
NAME: SF18-24V-5050-70-SPI4-RGBW-4000-G						TYPE: 硅胶			WEIGHT:		
DIM.: 16.5mm*16.5mm						SPEC.:			SERIAL No.:2022042901		
MFR.: OLYMPIA						SUR.:1*0.0165			PROTECTION ANGLE:		

Table--1

UNIT: cd

C (DEG) γ (DEG)	0	30	60	90	120	150	180	210	240	270	300	330							
0	48.5	48.5	48.5	48.4	48.4	48.4	48.5	48.5	48.5	48.4	48.4	48.4							
5	48.4	48.3	48.2	48.2	48.4	48.7	48.9	48.8	48.5	48.2	48.1	48.2							
10	48.2	48.1	47.7	47.5	48.2	48.8	49.2	48.8	48.1	47.4	47.5	47.9							
15	47.9	47.5	46.8	46.4	47.5	49.1	49.9	49.0	47.3	46.1	46.6	47.3							
20	47.4	47.0	45.6	44.8	46.7	49.2	49.8	49.2	46.4	44.5	45.3	46.7							
25	46.7	46.0	44.1	42.9	45.8	48.2	49.3	48.1	45.5	42.5	43.8	45.7							
30	46.8	45.0	42.4	40.7	44.4	47.7	50.6	47.6	44.2	40.1	42.0	44.7							
35	46.7	44.5	40.3	38.1	42.1	48.3	52.5	48.2	41.9	37.5	39.8	44.1							
40	46.7	43.4	37.9	35.2	39.6	49.0	53.7	48.8	39.4	34.5	37.4	42.9							
45	46.5	42.7	35.3	32.1	37.1	49.1	53.8	49.0	36.8	31.4	34.6	42.2							
50	45.5	41.7	32.4	28.7	34.5	48.1	53.7	48.0	34.2	27.9	31.8	41.1							
55	43.8	39.9	29.2	25.2	31.5	46.5	52.4	46.4	31.3	24.3	28.5	39.2							
60	41.0	37.4	26.3	21.4	29.1	44.5	49.6	44.4	28.8	20.5	25.5	36.7							
65	37.7	34.5	23.6	17.6	26.6	41.4	46.5	41.3	26.4	16.7	22.9	33.9							
70	34.0	31.2	20.6	13.6	23.4	37.9	43.3	37.8	23.3	12.8	19.9	30.6							
75	30.3	26.9	17.1	9.55	20.1	34.0	39.0	34.1	20.1	8.87	16.6	26.4							
80	26.8	23.1	13.6	5.73	16.8	29.7	34.9	29.8	16.9	5.18	13.2	22.7							
85	23.9	20.2	10.6	2.76	13.7	26.4	31.9	26.6	13.8	2.33	10.1	19.8							
90	23.1	19.1	9.08	1.22	12.2	24.8	31.2	25.1	12.2	1.07	8.60	18.7							
95	24.0	19.6	8.95	1.24	11.8	25.3	31.7	25.5	11.8	1.10	8.35	19.4							
100	24.3	20.1	7.61	1.25	11.3	26.1	31.2	26.3	11.4	1.10	7.10	19.8							
105	23.9	18.6	6.99	1.25	10.9	26.1	30.7	26.3	11.1	1.10	6.58	18.9							
110	22.6	17.3	6.31	1.25	10.8	25.4	30.2	25.6	11.1	1.10	6.47	17.2							
115	21.4	16.0	6.15	1.25	10.7	23.3	29.3	23.5	10.9	1.10	6.41	16.2							
120	19.9	14.7	6.39	1.26	9.91	21.2	26.8	21.4	10.0	1.09	6.11	14.9							
125	17.9	13.4	5.27	1.27	8.88	19.4	24.0	19.5	8.99	1.09	5.11	12.9							
130	15.7	10.6	4.58	1.27	7.62	17.3	21.3	17.4	7.72	1.09	4.26	10.8							
135	13.6	8.79	3.93	1.27	6.48	15.0	18.6	15.1	6.52	1.09	3.63	9.38							
140	11.5	6.94	3.35	1.28	5.44	12.6	15.6	12.6	5.41	1.11	3.00	7.16							
145	9.16	5.58	2.84	1.28	4.47	10.0	12.7	9.96	4.45	1.12	2.54	5.33							
150	6.44	4.46	2.34	1.28	3.48	7.88	9.72	7.83	3.46	1.14	2.06	4.11							
155	4.93	3.50	1.97	1.29	2.77	6.10	7.25	6.02	2.70	1.17	1.70	3.32							
160	4.22	2.57	1.67	1.29	2.26	4.40	5.27	4.32	2.18	1.19	1.50	2.41							
165	2.80	1.84	1.46	1.30	1.84	2.92	3.28	2.87	1.74	1.22	1.36	1.73							
170	1.55	1.48	1.40	1.31	1.66	2.02	1.65	2.01	1.56	1.25	1.32	1.48							
175	1.36	1.33	1.34	1.33	1.60	1.64	1.40	1.64	1.52	1.26	1.30	1.39							
180	1.29	1.32	1.32	1.33	1.37	1.37	1.31	1.38	1.36	1.28	1.33	1.35							

C Range: 0 - 360DEG  
C Interval: 30.0DEG  
Test Speed: HIGH  
Temperature:25.3DEG  
Operators:HXJ  
Test Date:2022-04-29

γ Range: 0 - 180DEG  
γ Interval: 1.0DEG  
Test System:EVERFINE GO-2000B\_V1 SYSTEM V2.0.269  
Humidity:65.0%  
Test Distance:9.200m [K=1.0000]  
Remarks:

## Photometric Data Table [cd]

G/C	0.0	30.0	60.0	90.0	120.0	150.0	180.0	210.0	240.0	270.0
0.0	48.50	48.49	48.49	48.39	48.39	48.43	48.50	48.49	48.49	48.39
3.0	48.40	48.35	48.32	48.32	48.49	48.67	48.81	48.71	48.51	48.34
6.0	48.32	48.27	48.14	48.08	48.43	48.74	48.96	48.79	48.45	48.04
9.0	48.27	48.10	47.85	47.69	48.31	48.80	49.12	48.80	48.23	47.59
12.0	48.02	47.89	47.39	47.08	47.93	48.88	49.44	48.83	47.84	46.95
15.0	47.95	47.55	46.85	46.37	47.47	49.10	49.86	49.02	47.34	46.13
18.0	47.65	47.30	46.19	45.49	46.94	49.32	50.02	49.26	46.81	45.22
21.0	47.27	46.78	45.34	44.47	46.49	49.04	49.64	48.98	46.29	44.10
24.0	46.82	46.22	44.46	43.34	45.98	48.42	49.32	48.36	45.74	42.90
27.0	46.70	45.53	43.52	42.12	45.38	47.82	49.59	47.76	45.14	41.60
30.0	46.84	44.98	42.38	40.66	44.39	47.67	50.56	47.56	44.22	40.13
33.0	46.77	44.78	41.15	39.22	43.07	48.03	51.69	47.91	42.90	38.60
36.0	46.71	44.29	39.85	37.58	41.64	48.44	52.71	48.33	41.45	36.88
39.0	46.70	43.61	38.40	35.81	40.10	48.89	53.50	48.72	39.88	35.17
42.0	46.64	43.18	36.85	34.02	38.58	49.14	53.82	48.98	38.30	33.31
45.0	46.51	42.69	35.28	32.11	37.12	49.07	53.78	48.99	36.81	31.37
48.0	45.98	42.15	33.63	30.04	35.58	48.54	53.76	48.41	35.34	29.29
51.0	45.23	41.39	31.79	28.01	33.87	47.85	53.59	47.68	33.64	27.18
54.0	44.29	40.31	29.79	25.84	32.11	46.85	52.79	46.76	31.87	25.10
57.0	42.88	38.89	27.99	23.66	30.44	45.82	51.29	45.71	30.23	22.80
60.0	41.01	37.38	26.31	21.45	29.07	44.47	49.60	44.36	28.84	20.53
63.0	39.06	35.73	24.74	19.08	27.61	42.67	47.71	42.53	27.45	18.20
66.0	37.02	33.93	23.09	16.79	25.98	40.71	45.91	40.55	25.84	15.85
69.0	34.79	31.89	21.24	14.36	24.07	38.56	44.00	38.47	23.98	13.54
72.0	32.50	29.51	19.25	11.90	22.12	36.45	41.63	36.32	22.04	11.11
75.0	30.35	26.95	17.14	9.553	20.10	34.03	38.99	34.05	20.10	8.867
78.0	28.16	24.56	15.02	7.216	18.09	31.39	36.46	31.46	18.20	6.625
81.0	26.14	22.47	12.96	5.040	16.06	28.99	34.22	29.12	16.23	4.613
84.0	24.37	20.68	11.11	3.282	14.20	26.90	32.33	27.07	14.37	2.805
87.0	23.55	19.49	9.689	1.797	12.83	25.56	31.39	25.80	12.93	1.586
90.0	23.11	19.06	9.082	1.221	12.21	24.81	31.19	25.10	12.23	1.071
93.0	23.66	19.40	9.004	1.232	11.94	25.01	31.61	25.23	11.99	1.096
96.0	24.06	19.76	8.643	1.242	11.69	25.40	31.66	25.66	11.77	1.098
99.0	24.20	20.16	7.793	1.250	11.35	25.95	31.36	26.20	11.49	1.099
102.0	24.31	19.80	7.324	1.251	11.10	26.24	30.98	26.40	11.23	1.100
105.0	23.92	18.63	6.992	1.251	10.92	26.12	30.70	26.29	11.12	1.100
108.0	23.00	17.86	6.741	1.251	10.85	25.73	30.44	25.89	11.09	1.100
111.0	22.42	16.95	6.168	1.251	10.79	25.16	30.03	25.31	11.06	1.100
114.0	21.73	16.22	6.161	1.252	10.72	23.84	29.53	24.07	10.97	1.101
117.0	20.82	15.55	6.216	1.255	10.44	22.33	28.45	22.48	10.58	1.101
120.0	19.85	14.69	6.388	1.261	9.908	21.22	26.82	21.35	10.04	1.091
123.0	18.74	13.91	5.713	1.267	9.345	20.12	25.01	20.28	9.476	1.091
126.0	17.50	13.07	5.103	1.269	8.632	19.01	23.46	19.09	8.727	1.091
129.0	16.14	11.22	4.695	1.271	7.873	17.73	21.84	17.82	7.973	1.091
132.0	14.82	10.02	4.354	1.273	7.139	16.50	20.19	16.48	7.225	1.091
135.0	13.60	8.787	3.927	1.274	6.476	15.04	18.56	15.06	6.521	1.091
138.0	12.19	7.791	3.580	1.276	5.822	13.58	16.80	13.57	5.827	1.096
141.0	11.10	6.597	3.258	1.278	5.254	12.08	15.05	12.02	5.209	1.108
144.0	9.686	5.873	2.946	1.280	4.691	10.51	13.30	10.47	4.662	1.116
147.0	7.489	5.164	2.665	1.282	4.073	9.083	11.48	9.040	4.049	1.129
150.0	6.444	4.461	2.338	1.285	3.480	7.877	9.724	7.828	3.460	1.141
153.0	5.673	3.863	2.071	1.287	2.997	6.741	8.216	6.718	2.944	1.161
156.0	4.727	3.336	1.910	1.289	2.655	5.777	6.775	5.692	2.597	1.170
159.0	4.475	2.772	1.729	1.292	2.358	4.766	5.585	4.682	2.276	1.176
162.0	3.592	2.230	1.574	1.298	2.087	3.721	4.471	3.672	1.999	1.196
165.0	2.797	1.839	1.463	1.302	1.835	2.923	3.284	2.872	1.738	1.216
168.0	2.088	1.578	1.432	1.305	1.709	2.351	2.479	2.313	1.603	1.243
171.0	1.488	1.437	1.382	1.312	1.639	1.859	1.567	1.846	1.553	1.250
174.0	1.377	1.357	1.347	1.323	1.613	1.653	1.407	1.664	1.518	1.256
177.0	1.322	1.317	1.317	1.332	1.543	1.578	1.382	1.598	1.462	1.271
180.0	1.287	1.322	1.322	1.332	1.372	1.367	1.312	1.377	1.357	1.282
G/C	300.0	330.0								
0.0	48.39	48.43								
3.0	48.20	48.27								
6.0	47.98	48.16								
9.0	47.65	47.97								
12.0	47.19	47.71								
15.0	46.60	47.32								
18.0	45.92	47.05								
21.0	45.03	46.49								
24.0	44.07	45.91								
27.0	43.09	45.21								
30.0	41.96	44.66								

C Range: 0 - 360DEG  
 C Interval: 30.0DEG  
 Test Speed: HIGH  
 Temperature: 25.3DEG  
 Operators: HXJ  
 Test Date: 2022-04-29

γ Range: 0 - 180DEG  
 γ Interval: 1.0DEG  
 Test System: EVERFINE GO-2000B\_V1 SYSTEM V2.0.269  
 Humidity: 65.0%  
 Test Distance: 9.200m [K=1.0000]  
 Remarks:

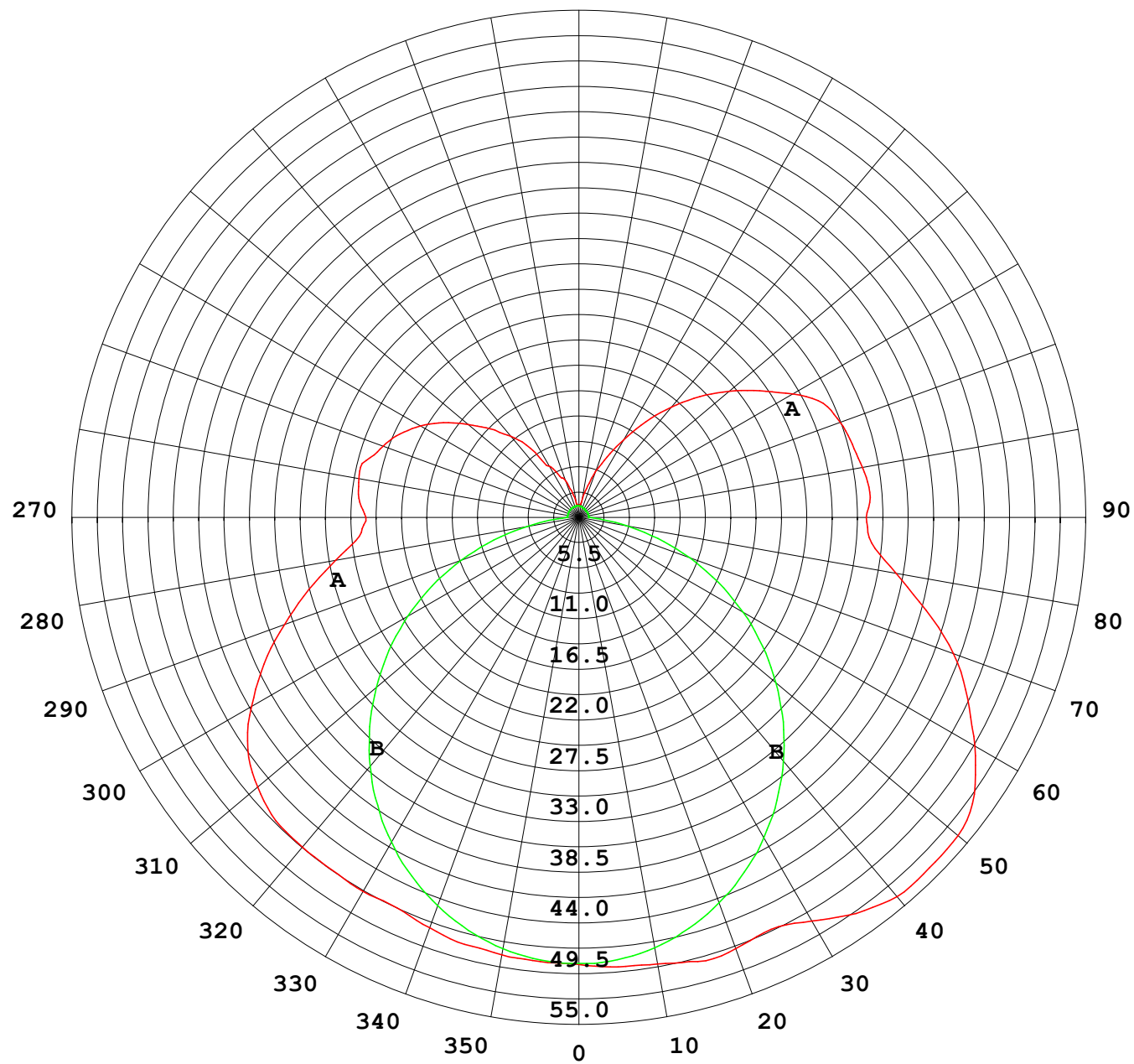
## Photometric Data Table [cd]

33.0	40.69	44.41
36.0	39.34	43.87
39.0	37.90	43.11
42.0	36.26	42.63
45.0	34.63	42.16
48.0	32.98	41.57
51.0	31.11	40.74
54.0	29.12	39.64
57.0	27.25	38.18
60.0	25.54	36.73
63.0	23.91	35.14
66.0	22.33	33.28
69.0	20.55	31.29
72.0	18.59	28.97
75.0	16.59	26.45
78.0	14.55	24.07
81.0	12.53	21.99
84.0	10.67	20.21
87.0	9.234	19.15
90.0	8.604	18.72
93.0	8.619	19.07
96.0	8.026	19.53
99.0	7.320	19.85
102.0	6.819	19.58
105.0	6.583	18.88
108.0	6.353	17.60
111.0	6.554	17.01
114.0	6.467	16.49
117.0	6.357	15.76
120.0	6.114	14.87
123.0	5.491	13.68
126.0	4.808	12.61
129.0	4.421	11.06
132.0	4.004	10.31
135.0	3.627	9.375
138.0	3.230	8.115
141.0	2.914	6.788
144.0	2.623	5.657
147.0	2.371	4.831
150.0	2.064	4.113
153.0	1.798	3.580
156.0	1.653	3.202
159.0	1.527	2.620
162.0	1.417	2.092
165.0	1.362	1.735
168.0	1.331	1.558
171.0	1.313	1.458
174.0	1.303	1.407
177.0	1.297	1.367
180.0	1.332	1.347

C Range: 0 - 360DEG  
 C Interval: 30.0DEG  
 Test Speed: HIGH  
 Temperature: 25.3DEG  
 Operators: HXJ  
 Test Date: 2022-04-29

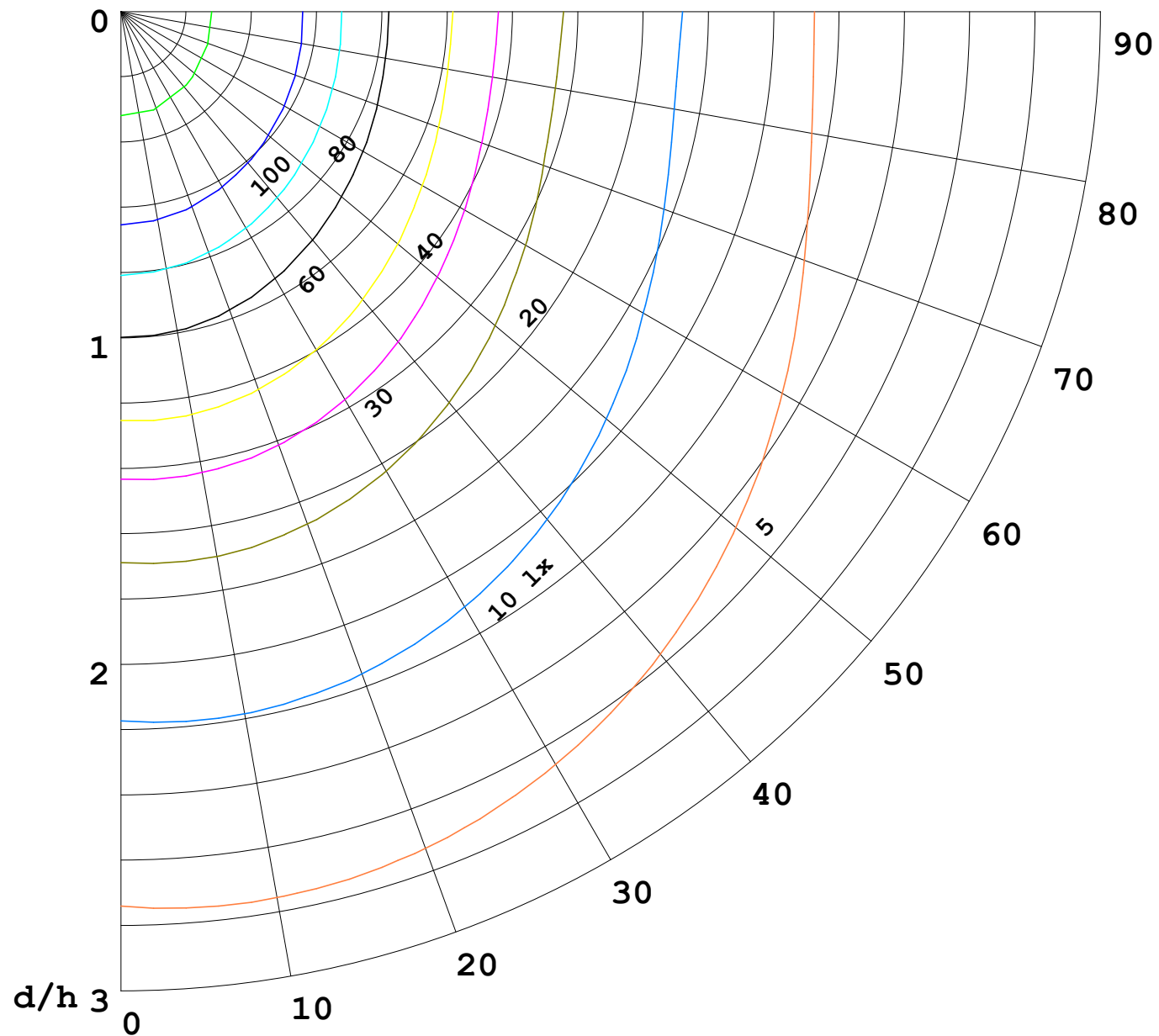
γ Range: 0 - 180DEG  
 γ Interval: 1.0DEG  
 Test System: EVERFINE GO-2000B\_V1 SYSTEM V2.0.269  
 Humidity: 65.0%  
 Test Distance: 9.200m [K=1.0000]  
 Remarks:

I (cd)



1000 lm

$\kappa = 1$



F = 5000 lm  
 K = 0.7  
 Hcc = 0.0 m  
 Hfc = 0.0 m  
 Eave = 100 lx

	Pcc	Pw	Pfc
—	70	50	30
—	50	30	20

