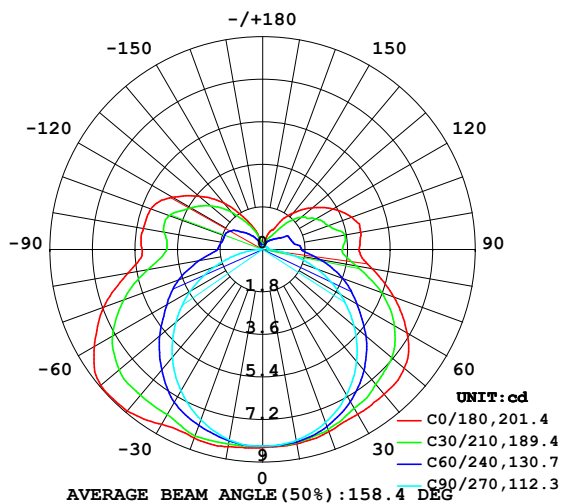


LUMINAIRE PHOTOMETRIC TEST REPORT

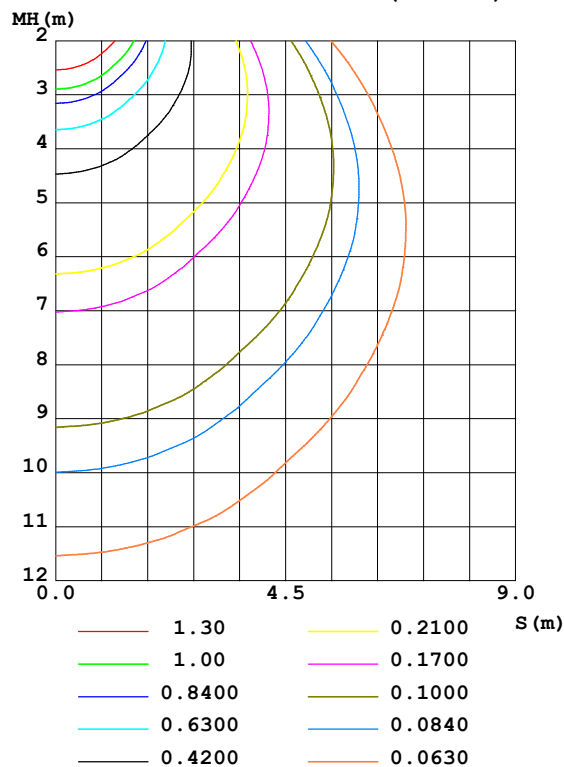
| | | |
|---|---------------------|-----------------------|
| Test:U:24.00V I:0.2347A P:5.633W PF:1.000 Freq:0Hz Lamp Flux:46.6422x1 lm | | |
| NAME: F18-24V-5050-70-SPI3-RGB-B | TYPE: 硅胶 | WEIGHT: |
| SPEC.: | DIM.: 16.5mm*16.5mm | SERIAL No.:2022042801 |
| MFR.: OLYMPIA | SUR.:1*0.0165 | Shielding Angle: |

| DATA OF LAMP | | PHOTOMETRIC DATA | | | | Eff: 8.28 lm/W |
|-------------------|---------|-----------------------|---------|---------------------|------------|----------------|
| MODEL | 5050 | I _{max} (cd) | 8.971 | S/MH (C0/180) | 1.61 | |
| NOMINAL POWER (W) | 5 | LOR (%) | 100.0 | S/MH (C90/270) | 1.24 | |
| RATED VOLTAGE (V) | 24 | TOTAL FLUX (lm) | 46.647 | η UP, DN (C0-180) | 12.4, 37.5 | |
| NOMINAL FLUX (lm) | 46.6422 | CIE CLASS | SEMI-D. | η UP, DN (C180-360) | 12.7, 37.5 | |
| LAMPS INSIDE | 1 | η up (%) | 25.1 | CIBSE SHR NOM | 1.50 | |
| TEST VOLTAGE (V) | 24.0 | η down (%) | 74.9 | CIBSE SHR MAX | 1.55 | |

LUMINOUS INTENSITY DISTRIBUTION DIAGRAM



C0 PLANE ISOLUX DIAGRAM (UNIT:lx)



C Range: 0 - 360DEG
C Interval: 30.0DEG
Test Speed: HIGH
Temperature: 25.3DEG
Operators: HXJ
Test Date: 2022-04-28

γ Range: 0 - 180DEG
γ Interval: 1.0DEG
Test System: EVERFINE GO-2000B_V1 SYSTEM V2.0.269
Humidity: 65.0%
Test Distance: 9.200m [K=1.0000]
Remarks:

ZONAL FLUX DIAGRAM

ZONAL FLUX DIAGRAM:

| γ | C0 | C45 | C90 | C135 | C180 | C225 | C270 | C315 | γ | Φ zone | Φ total | %lum, lamp |
|----------|-----------------------|--------|--------|--------|--------|--------|--------|--------|----------|-------------|--------------|------------|
| 10 | 8.347 | 8.290 | 8.202 | 8.369 | 8.474 | 8.291 | 8.177 | 8.230 | 0- 10 | 0.7944 | 0.7944 | 1.7,1.7 |
| 20 | 8.197 | 8.041 | 7.785 | 8.272 | 8.493 | 8.159 | 7.670 | 7.928 | 10- 20 | 2.322 | 3.117 | 6.68,6.68 |
| 30 | 8.054 | 7.594 | 7.106 | 7.971 | 8.544 | 7.777 | 6.916 | 7.430 | 20- 30 | 3.641 | 6.758 | 14.5,14.5 |
| 40 | 7.998 | 7.062 | 6.186 | 7.560 | 8.926 | 7.350 | 5.951 | 6.865 | 30- 40 | 4.687 | 11.45 | 24.5,24.5 |
| 50 | 7.826 | 6.418 | 5.045 | 7.031 | 8.940 | 6.809 | 4.801 | 6.194 | 40- 50 | 5.372 | 16.82 | 36.1,36.1 |
| 60 | 7.052 | 5.516 | 3.788 | 6.227 | 8.226 | 6.013 | 3.539 | 5.282 | 50- 60 | 5.549 | 22.37 | 47.9,48 |
| 70 | 5.907 | 4.491 | 2.451 | 5.217 | 7.170 | 5.026 | 2.177 | 4.282 | 60- 70 | 5.153 | 27.52 | 59,59 |
| 80 | 4.705 | 3.244 | 1.140 | 3.968 | 5.788 | 3.832 | 0.9156 | 3.076 | 70- 80 | 4.250 | 31.77 | 68.1,68.1 |
| 90 | 4.091 | 2.515 | 0.2695 | 3.169 | 5.106 | 2.983 | 0.1308 | 2.398 | 80- 90 | 3.183 | 34.95 | 74.9,74.9 |
| 100 | 4.212 | 2.445 | 0.2097 | 3.176 | 5.131 | 3.010 | 0.1221 | 2.281 | 90-100 | 2.879 | 37.83 | 81.1,81.1 |
| 110 | 4.006 | 2.108 | 0.1998 | 3.064 | 5.036 | 2.958 | 0.1185 | 2.000 | 100-110 | 2.714 | 40.55 | 86.9,86.9 |
| 120 | 3.433 | 1.857 | 0.1958 | 2.628 | 4.417 | 2.546 | 0.1171 | 1.754 | 110-120 | 2.309 | 42.85 | 91.9,91.9 |
| 130 | 2.750 | 1.427 | 0.1608 | 2.073 | 3.507 | 2.015 | 0.1191 | 1.284 | 120-130 | 1.716 | 44.57 | 95.5,95.6 |
| 140 | 2.006 | 0.8892 | 0.1608 | 1.487 | 2.562 | 1.450 | 0.1235 | 0.8423 | 130-140 | 1.124 | 45.70 | 98,98 |
| 150 | 1.072 | 0.4975 | 0.1608 | 0.8995 | 1.522 | 0.8820 | 0.1284 | 0.4749 | 140-150 | 0.5911 | 46.29 | 99.2,99.2 |
| 160 | 0.7342 | 0.2939 | 0.1608 | 0.4999 | 0.8284 | 0.4851 | 0.1292 | 0.2615 | 150-160 | 0.2578 | 46.54 | 99.8,99.8 |
| 170 | 0.2062 | 0.1781 | 0.1608 | 0.2486 | 0.1959 | 0.2442 | 0.1301 | 0.1700 | 160-170 | 0.0854 | 46.63 | 100,100 |
| 180 | 0.1558 | 0.1583 | 0.1608 | 0.1784 | 0.1608 | 0.1784 | 0.1307 | 0.1533 | 170-180 | 0.0172 | 46.65 | 100,100 |
| DEG | LUMINOUS INTENSITY:cd | | | | | | | | | UNIT:lm | | |

Conical surface Flux(90deg): 14.07 lm

%lum = 30.2%

%lamp = 30.2%

Conical surface Flux(120deg): 22.366 lm

%lum = 47.9%

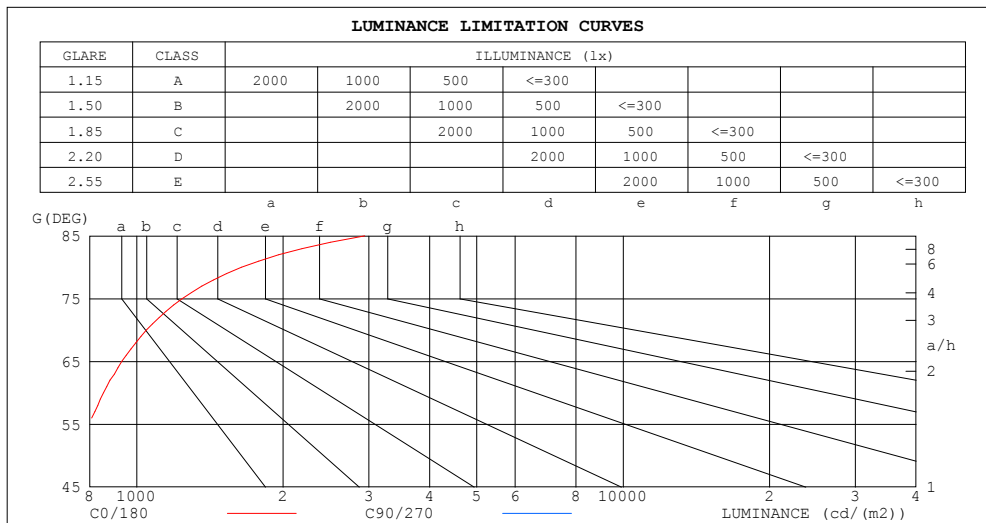
%lamp = 48.0%

C Range: 0 - 360DEG
 C Interval: 30.0DEG
 Test Speed: HIGH
 Temperature:25.3DEG
 Operators:HXJ
 Test Date:2022-04-28

γ Range: 0 - 180DEG
 γ Interval: 1.0DEG
 Test System:EVERFINE GO-2000B_V1 SYSTEM V2.0.269
 Humidity:65.0%
 Test Distance:9.200m [K=1.0000]
 Remarks:

LUMINANCE LIMITATION CURVES

| | | |
|---|---------------------|-----------------------|
| Test:U:24.00V I:0.2347A P:5.633W PF:1.000 Freq:0Hz Lamp Flux:46.6422x1 lm | | |
| NAME: F18-24V-5050-70-SPI3-RGB-B | TYPE: 硅胶 | WEIGHT: |
| SPEC.: | DIM.: 16.5mm*16.5mm | SERIAL No.:2022042801 |
| MFR.: OLYMPIA | SUR.:1*0.0165 | Shielding Angle: |



| LUMINANCE cd/(m2) | | |
|-------------------|--------|---------|
| G (DEG) | C0/180 | C90/270 |
| 85 | 2943 | 359 |
| 80 | 1642 | 398 |
| 75 | 1241 | 430 |
| 70 | 1047 | 434 |
| 65 | 932 | 448 |
| 60 | 855 | 459 |
| 55 | 797 | 468 |
| 50 | 738 | 476 |
| 45 | 684 | 483 |

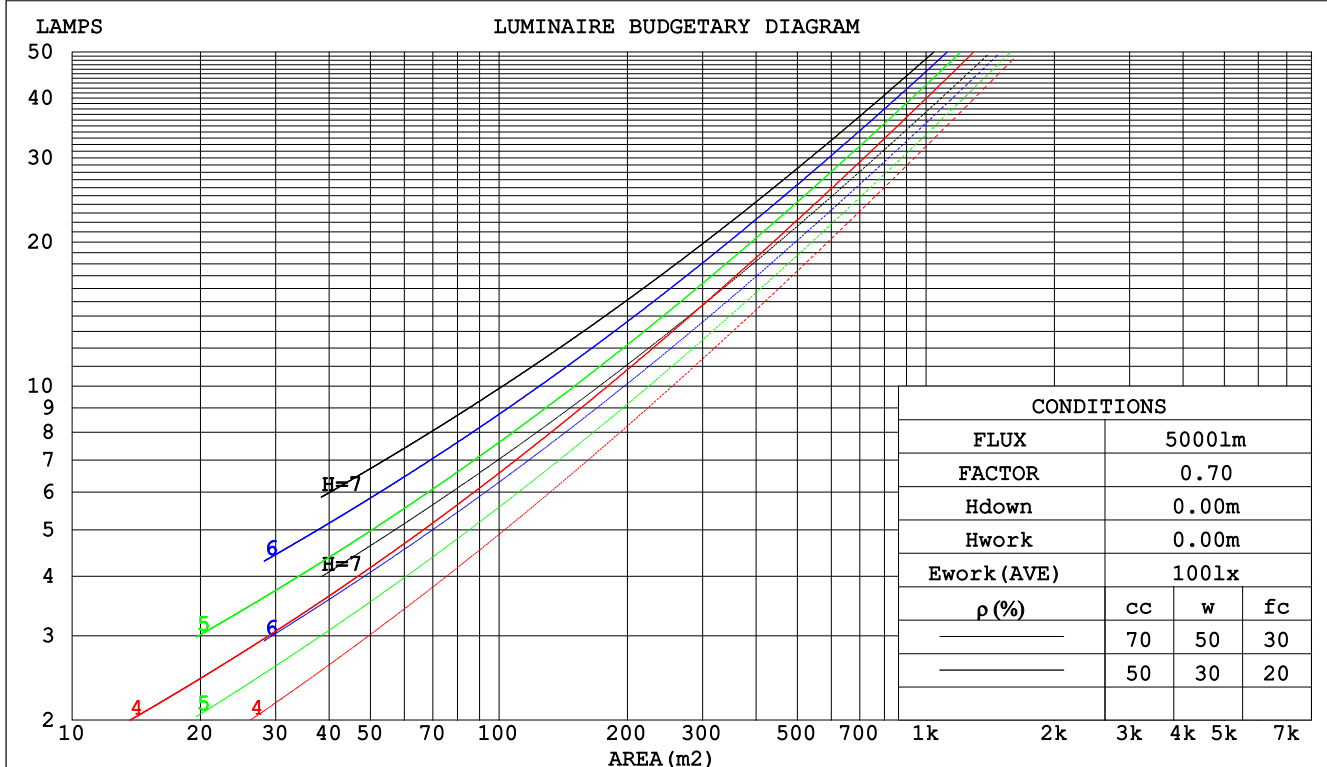
C Range: 0 - 360DEG
C Interval: 30.0DEG
Test Speed: HIGH
Temperature:25.3DEG
Operators:HXJ
Test Date:2022-04-28

γ Range: 0 - 180DEG
 γ Interval: 1.0DEG
Test System:EVERFINE GO-2000B_V1 SYSTEM V2.0.269
Humidity:65.0%
Test Distance:9.200m [K=1.0000]
Remarks:

CU AND LUMINAIRE BUDGETARY ESTIMATE DIAGRAM

| | | |
|---|---------------------|-----------------------|
| Test:U:24.00V I:0.2347A P:5.633W PF:1.000 Freq:0Hz Lamp Flux:46.6422x1 lm | | |
| NAME: F18-24V-5050-70-SPI3-RGB-B | TYPE:硅胶 | WEIGHT: |
| SPEC.: | DIM.: 16.5mm*16.5mm | SERIAL No.:2022042801 |
| MFR.: OLYMPIA | SUR.:1*0.0165 | Shielding Angle: |

| | | | | | | | | | | | | | | | | |
|------|-----------------------|------|------|------|------|------|---------------------------------|-----|-----|-----|-----|-----|-----|-----|-----|-----|
| pcc | 80% | | | 70% | | | 50% | | | 30% | | | 10% | | | 0 |
| pw | 50% | 30% | 10% | 50% | 30% | 10% | 50% | 30% | 10% | 50% | 30% | 10% | 50% | 30% | 10% | 0 |
| pfc | 20% | | | 20% | | | 20% | | | 20% | | | 20% | | | 0 |
| RCR | RCR:Room Cavity Ratio | | | | | | Coefficients of Utilization(CU) | | | | | | | | | |
| 0.0 | 1.13 | 1.13 | 1.13 | 1.08 | 1.08 | 1.08 | .97 | .97 | .97 | .88 | .88 | .88 | .79 | .79 | .79 | .75 |
| 1.0 | .94 | .89 | .84 | .89 | .85 | .80 | .81 | .77 | .73 | .72 | .69 | .67 | .65 | .62 | .60 | .56 |
| 2.0 | .80 | .73 | .66 | .76 | .69 | .63 | .69 | .63 | .58 | .62 | .57 | .53 | .55 | .51 | .48 | .45 |
| 3.0 | .70 | .61 | .54 | .66 | .58 | .51 | .59 | .53 | .47 | .53 | .48 | .43 | .48 | .43 | .40 | .36 |
| 4.0 | .61 | .52 | .44 | .58 | .49 | .43 | .52 | .45 | .39 | .47 | .41 | .36 | .42 | .37 | .33 | .30 |
| 5.0 | .54 | .45 | .38 | .51 | .43 | .36 | .46 | .39 | .33 | .42 | .36 | .31 | .37 | .32 | .28 | .25 |
| 6.0 | .48 | .39 | .32 | .46 | .37 | .31 | .42 | .34 | .29 | .37 | .31 | .27 | .34 | .28 | .24 | .22 |
| 7.0 | .43 | .34 | .28 | .41 | .33 | .27 | .38 | .30 | .25 | .34 | .28 | .23 | .31 | .25 | .21 | .19 |
| 8.0 | .39 | .31 | .25 | .38 | .29 | .24 | .34 | .27 | .22 | .31 | .25 | .21 | .28 | .23 | .19 | .17 |
| 9.0 | .36 | .28 | .22 | .34 | .26 | .21 | .31 | .25 | .20 | .28 | .23 | .18 | .26 | .21 | .17 | .15 |
| 10.0 | .33 | .25 | .20 | .31 | .24 | .19 | .29 | .22 | .18 | .26 | .21 | .17 | .24 | .19 | .15 | .13 |



C Range: 0 - 360DEG
C Interval: 30.0DEG
Test Speed: HIGH
Temperature:25.3DEG
Operators:HXJ
Test Date:2022-04-28

γ Range: 0 - 180DEG
γ Interval: 1.0DEG
Test System:EVERFINE GO-2000B_V1 SYSTEM V2.0.269
Humidity:65.0%
Test Distance:9.200m [K=1.0000]
Remarks:

WEC AND CCEC

| | | |
|---|---------------------|-----------------------|
| Test:U:24.00V I:0.2347A P:5.633W PF:1.000 Freq:0Hz Lamp Flux:46.6422x1 lm | | |
| NAME: F18-24V-5050-70-SPI3-RGB-B | TYPE: 硅胶 | WEIGHT: |
| SPEC.: | DIM.: 16.5mm*16.5mm | SERIAL No.:2022042801 |
| MFR.: OLYMPIA | SUR.:1*0.0165 | Shielding Angle: |

| pcc | 80% | | | 70% | | | 50% | | | 30% | | | 10% | | | 0 | |
|------|-----------------------|------|------|------|------|------|---------------------------------|------|------|------|------|------|------|------|------|---|--|
| pw | 50% | 30% | 10% | 50% | 30% | 10% | 50% | 30% | 10% | 50% | 30% | 10% | 50% | 30% | 10% | 0 | |
| pfc | 20% | | | 20% | | | 20% | | | 20% | | | 20% | | | 0 | |
| RCR | RCR:Room Cavity Ratio | | | | | | Wall Exitance Coefficients(WEC) | | | | | | | | | | |
| 0.0 | | | | | | | | | | | | | | | | | |
| 1.0 | .379 | .216 | .068 | .364 | .208 | .066 | .337 | .193 | .062 | .311 | .179 | .058 | .287 | .167 | .054 | | |
| 2.0 | .330 | .181 | .055 | .316 | .174 | .054 | .291 | .162 | .050 | .268 | .150 | .047 | .246 | .139 | .044 | | |
| 3.0 | .294 | .156 | .047 | .281 | .151 | .045 | .259 | .140 | .043 | .237 | .130 | .040 | .218 | .121 | .037 | | |
| 4.0 | .265 | .137 | .040 | .254 | .133 | .039 | .233 | .123 | .037 | .213 | .115 | .035 | .195 | .106 | .032 | | |
| 5.0 | .241 | .123 | .036 | .231 | .118 | .034 | .212 | .110 | .032 | .194 | .102 | .030 | .177 | .095 | .028 | | |
| 6.0 | .221 | .111 | .032 | .211 | .107 | .031 | .194 | .099 | .029 | .178 | .092 | .027 | .162 | .085 | .025 | | |
| 7.0 | .203 | .101 | .029 | .195 | .097 | .028 | .179 | .090 | .026 | .164 | .084 | .024 | .150 | .078 | .023 | | |
| 8.0 | .189 | .092 | .026 | .181 | .089 | .025 | .166 | .083 | .024 | .152 | .077 | .022 | .139 | .071 | .021 | | |
| 9.0 | .176 | .085 | .024 | .169 | .082 | .023 | .155 | .077 | .022 | .142 | .071 | .020 | .130 | .066 | .019 | | |
| 10.0 | .164 | .079 | .022 | .158 | .076 | .021 | .145 | .071 | .020 | .133 | .066 | .019 | .122 | .061 | .018 | | |

| pcc | 80% | | | 70% | | | 50% | | | 30% | | | 10% | | | 0 |
|------|-----------------------|------|------|------|------|------|--|------|------|------|------|------|------|------|------|---|
| pw | 50% | 30% | 10% | 50% | 30% | 10% | 50% | 30% | 10% | 50% | 30% | 10% | 50% | 30% | 10% | 0 |
| pfc | 20% | | | 20% | | | 20% | | | 20% | | | 20% | | | 0 |
| RCR | RCR:Room Cavity Ratio | | | | | | Ceiling Cavity Exitance Coefficients(CCEC) | | | | | | | | | |
| 0.0 | .382 | .382 | .382 | .326 | .326 | .326 | .223 | .223 | .223 | .128 | .128 | .128 | .041 | .041 | .041 | |
| 1.0 | .378 | .348 | .321 | .323 | .299 | .277 | .221 | .206 | .191 | .127 | .119 | .111 | .041 | .038 | .036 | |
| 2.0 | .371 | .326 | .287 | .318 | .280 | .248 | .218 | .194 | .173 | .126 | .113 | .102 | .040 | .036 | .033 | |
| 3.0 | .364 | .309 | .266 | .312 | .267 | .231 | .214 | .185 | .162 | .124 | .108 | .095 | .040 | .035 | .031 | |
| 4.0 | .356 | .297 | .252 | .306 | .257 | .219 | .210 | .179 | .154 | .122 | .105 | .091 | .039 | .034 | .030 | |
| 5.0 | .349 | .287 | .242 | .300 | .249 | .211 | .206 | .174 | .149 | .120 | .102 | .088 | .039 | .033 | .029 | |
| 6.0 | .342 | .280 | .235 | .294 | .242 | .205 | .203 | .170 | .145 | .118 | .100 | .086 | .038 | .033 | .028 | |
| 7.0 | .335 | .273 | .230 | .288 | .237 | .201 | .199 | .166 | .142 | .116 | .098 | .085 | .037 | .032 | .028 | |
| 8.0 | .328 | .268 | .226 | .282 | .232 | .197 | .195 | .163 | .140 | .114 | .096 | .083 | .037 | .032 | .028 | |
| 9.0 | .322 | .263 | .223 | .277 | .228 | .195 | .192 | .160 | .138 | .112 | .095 | .082 | .036 | .031 | .027 | |
| 10.0 | .316 | .259 | .221 | .273 | .225 | .193 | .189 | .158 | .137 | .110 | .094 | .082 | .036 | .031 | .027 | |

C Range: 0 - 360DEG
 C Interval: 30.0DEG
 Test Speed: HIGH
 Temperature:25.3DEG
 Operators:HXJ
 Test Date:2022-04-28

γ Range: 0 - 180DEG
 γ Interval: 1.0DEG
 Test System:EVERFINE GO-2000B_V1 SYSTEM V2.0.269
 Humidity:65.0%
 Test Distance:9.200m [K=1.0000]
 Remarks:

UGR(Unified Glare Rating) Table

| | | | | | | | | | | |
|---|------------------|------|------|------|---------------------|----------------|------|-----------------------|------|------|
| Test:U:24.00V I:0.2347A P:5.633W PF:1.000 Freq:0Hz Lamp Flux:46.6422x1 lm | | | | | | | | | | |
| NAME: F18-24V-5050-70-SPI3-RGB-B | | | | | TYPE: 硅胶 | | | WEIGHT: | | |
| SPEC.: | | | | | DIM.: 16.5mm*16.5mm | | | SERIAL No.:2022042801 | | |
| MFR.: OLYMPIA | | | | | SUR.:1*0.0165 | | | Shielding Angle: | | |
| ceiling/cavity | 0.7 | 0.7 | 0.5 | 0.5 | 0.3 | 0.7 | 0.7 | 0.5 | 0.5 | 0.3 |
| walls | 0.5 | 0.3 | 0.5 | 0.3 | 0.3 | 0.5 | 0.3 | 0.5 | 0.3 | 0.3 |
| working plane | 0.2 | 0.2 | 0.2 | 0.2 | 0.2 | 0.2 | 0.2 | 0.2 | 0.2 | 0.2 |
| Room dimensions | Viewed crosswise | | | | | Viewed endwise | | | | |
| x = 2H y = 2H | 21.6 | 22.9 | 22.2 | 23.5 | 24.2 | 19.0 | 20.3 | 19.6 | 20.9 | 21.6 |
| 3H | 24.2 | 25.4 | 24.8 | 26.0 | 26.8 | 20.6 | 21.8 | 21.2 | 22.4 | 23.2 |
| 4H | 25.5 | 26.7 | 26.2 | 27.3 | 28.1 | 21.3 | 22.5 | 22.0 | 23.1 | 23.9 |
| 6H | 27.0 | 28.0 | 27.6 | 28.7 | 29.5 | 21.9 | 22.9 | 22.5 | 23.6 | 24.4 |
| 8H | 27.8 | 28.8 | 28.5 | 29.5 | 30.3 | 22.1 | 23.1 | 22.7 | 23.8 | 24.6 |
| 12H | 28.7 | 29.7 | 29.4 | 30.4 | 31.2 | 22.2 | 23.1 | 22.8 | 23.8 | 24.6 |
| 4H 2H | 22.1 | 23.2 | 22.7 | 23.9 | 24.6 | 20.2 | 21.3 | 20.8 | 22.0 | 22.7 |
| 3H | 24.9 | 25.9 | 25.6 | 26.6 | 27.4 | 22.1 | 23.0 | 22.7 | 23.7 | 24.5 |
| 4H | 26.5 | 27.4 | 27.2 | 28.1 | 28.9 | 22.9 | 23.8 | 23.6 | 24.5 | 25.4 |
| 6H | 28.1 | 28.9 | 28.8 | 29.7 | 30.5 | 23.7 | 24.5 | 24.4 | 25.2 | 26.1 |
| 8H | 29.0 | 29.8 | 29.8 | 30.5 | 31.4 | 23.9 | 24.7 | 24.6 | 25.4 | 26.3 |
| 12H | 30.1 | 30.8 | 30.9 | 31.6 | 32.5 | 24.1 | 24.8 | 24.8 | 25.5 | 26.4 |
| 8H 4H | 26.7 | 27.5 | 27.5 | 28.2 | 29.1 | 23.9 | 24.7 | 24.7 | 25.4 | 26.3 |
| 6H | 28.7 | 29.3 | 29.5 | 30.1 | 31.0 | 25.0 | 25.6 | 25.7 | 26.4 | 27.3 |
| 8H | 29.8 | 30.4 | 30.6 | 31.2 | 32.1 | 25.4 | 26.0 | 26.2 | 26.7 | 27.7 |
| 12H | 31.1 | 31.6 | 31.9 | 32.4 | 33.4 | 25.8 | 26.3 | 26.6 | 27.1 | 28.0 |
| 12H 4H | 26.7 | 27.4 | 27.5 | 28.2 | 29.1 | 24.2 | 24.9 | 25.0 | 25.7 | 26.6 |
| 6H | 28.8 | 29.3 | 29.6 | 30.1 | 31.1 | 25.4 | 26.0 | 26.2 | 26.8 | 27.7 |
| 8H | 30.0 | 30.5 | 30.8 | 31.3 | 32.3 | 26.0 | 26.5 | 26.8 | 27.3 | 28.3 |
| Variations with the observer position at spacings: | | | | | | | | | | |
| S = 1.0H | + 0.1 / - 0.1 | | | | | + 0.1 / - 0.1 | | | | |
| 1.5H | + 0.2 / - 0.2 | | | | | + 0.2 / - 0.3 | | | | |
| 2.0H | + 0.2 / - 0.3 | | | | | + 0.2 / - 0.4 | | | | |

CIE Pub.117, 46.64 lm Total Lamp Luminous Flux Correct (8log(F/F0) = -10.6)

C Range: 0 - 360DEG
 C Interval: 30.0DEG
 Test Speed: HIGH
 Temperature:25.3DEG
 Operators:HXJ
 Test Date:2022-04-28

γ Range: 0 - 180DEG
 γ Interval: 1.0DEG
 Test System:EVERFINE GO-2000B_V1 SYSTEM V2.0.269
 Humidity:65.0%
 Test Distance:9.200m [K=1.0000]
 Remarks:

UTILIZATION FACTORS TABLE

| | | |
|---|---------------------|-----------------------|
| Test:U:24.00V I:0.2347A P:5.633W PF:1.000 Freq:0Hz Lamp Flux:46.6422x1 lm | | |
| NAME: F18-24V-5050-70-SPI3-RGB-B | TYPE: 硅胶 | WEIGHT: |
| SPEC.: | DIM.: 16.5mm*16.5mm | SERIAL No.:2022042801 |
| MFR.: OLYMPIA | SUR.:1*0.0165 | Shielding Angle: |

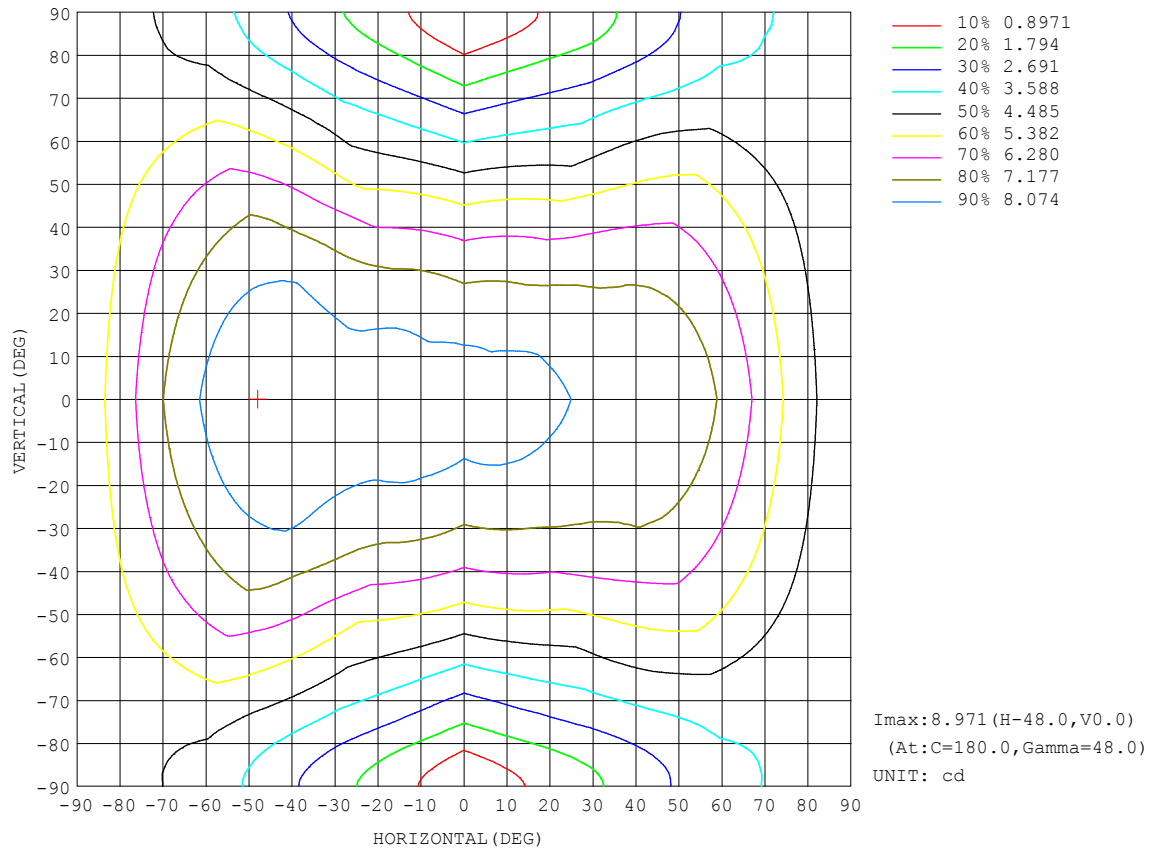
| REFLECTANCE | | | | | | | | | | |
|----------------------------------|--|-----|-----------|-----|-----|-----|-----|---------------|-----|--------|
| Ceiling | 0.8 | 0.8 | 0.8 | 0.7 | 0.7 | 0.7 | 0.5 | 0.5 | 0.5 | 0 |
| Walls | 0.7 | 0.5 | 0.3 | 0.7 | 0.5 | 0.3 | 0.7 | 0.5 | 0.3 | 0 |
| Working plane | 0.2 | 0.2 | 0.2 | 0.2 | 0.2 | 0.2 | 0.2 | 0.2 | 0.2 | 0 |
| ROOM INDEX | UTILIZATION FACTORS (PERCENT) $k(RI) \times RCR = 5$ | | | | | | | | | |
| $k = 0.60$ | 45 | 33 | 25 | 44 | 32 | 25 | 42 | 31 | 24 | 18 |
| 0.80 | 54 | 41 | 33 | 52 | 40 | 32 | 49 | 38 | 31 | 23 |
| 1.00 | 62 | 49 | 40 | 60 | 47 | 40 | 56 | 47 | 38 | 29 |
| 1.25 | 69 | 56 | 47 | 66 | 54 | 46 | 61 | 51 | 44 | 34 |
| 1.50 | 74 | 62 | 53 | 71 | 60 | 52 | 65 | 56 | 49 | 37 |
| 2.00 | 82 | 70 | 62 | 78 | 68 | 60 | 71 | 63 | 57 | 44 |
| 2.50 | 86 | 76 | 68 | 82 | 73 | 66 | 75 | 67 | 61 | 47 |
| 3.00 | 90 | 81 | 73 | 86 | 77 | 71 | 78 | 71 | 66 | 51 |
| 4.00 | 95 | 87 | 80 | 90 | 83 | 77 | 82 | 76 | 71 | 55 |
| 5.00 | 98 | 91 | 85 | 93 | 87 | 82 | 85 | 80 | 75 | 58 |
| ROOM INDEX | UF (total) | | | | | | | | | Direct |
| According to DIN EN 13032-2 2004 | | | Suspended | | | | | SHRNOM = 1.25 | | |

C Range: 0 - 360DEG
C Interval: 30.0DEG
Test Speed: HIGH
Temperature:25.3DEG
Operators:HXJ
Test Date:2022-04-28

γ Range: 0 - 180DEG
 γ Interval: 1.0DEG
Test System:EVERFINE GO-2000B_V1 SYSTEM V2.0.269
Humidity:65.0%
Test Distance:9.200m [K=1.0000]
Remarks:

ISOCANDELA DIAGRAM

| | | |
|---|---------------------|-----------------------|
| Test:U:24.00V I:0.2347A P:5.633W PF:1.000 Freq:0Hz Lamp Flux:46.6422x1 lm | | |
| NAME: F18-24V-5050-70-SPI3-RGB-B | TYPE: 硅胶 | WEIGHT: |
| SPEC.: | DIM.: 16.5mm*16.5mm | SERIAL No.:2022042801 |
| MFR.: OLYMPIA | SUR.:1*0.0165 | Shielding Angle: |

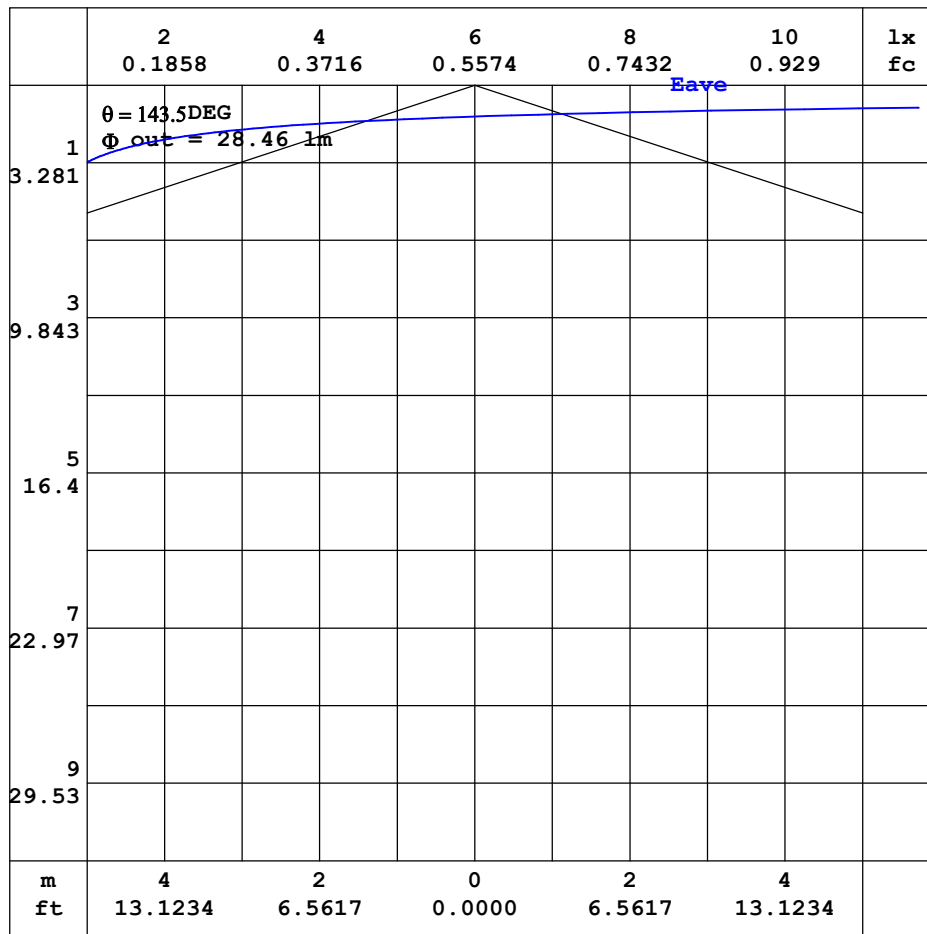


C Range: 0 - 360DEG
C Interval: 30.0DEG
Test Speed: HIGH
Temperature:25.3DEG
Operators:HXJ
Test Date:2022-04-28

γ Range: 0 - 180DEG
 γ Interval: 1.0DEG
Test System:EVERFINE GO-2000B_V1 SYSTEM V2.0.269
Humidity:65.0%
Test Distance:9.200m [K=1.0000]
Remarks:

AAI CURVES

| | | |
|---|---------------------|-----------------------|
| Test:U:24.00V I:0.2347A P:5.633W PF:1.000 Freq:0Hz Lamp Flux:46.6422x1 lm | | |
| NAME: F18-24V-5050-70-SPI3-RGB-B | TYPE: 硅胶 | WEIGHT: |
| SPEC.: | DIM.: 16.5mm*16.5mm | SERIAL No.:2022042801 |
| MFR.: OLYMPIA | SUR.:1*0.0165 | Shielding Angle: |



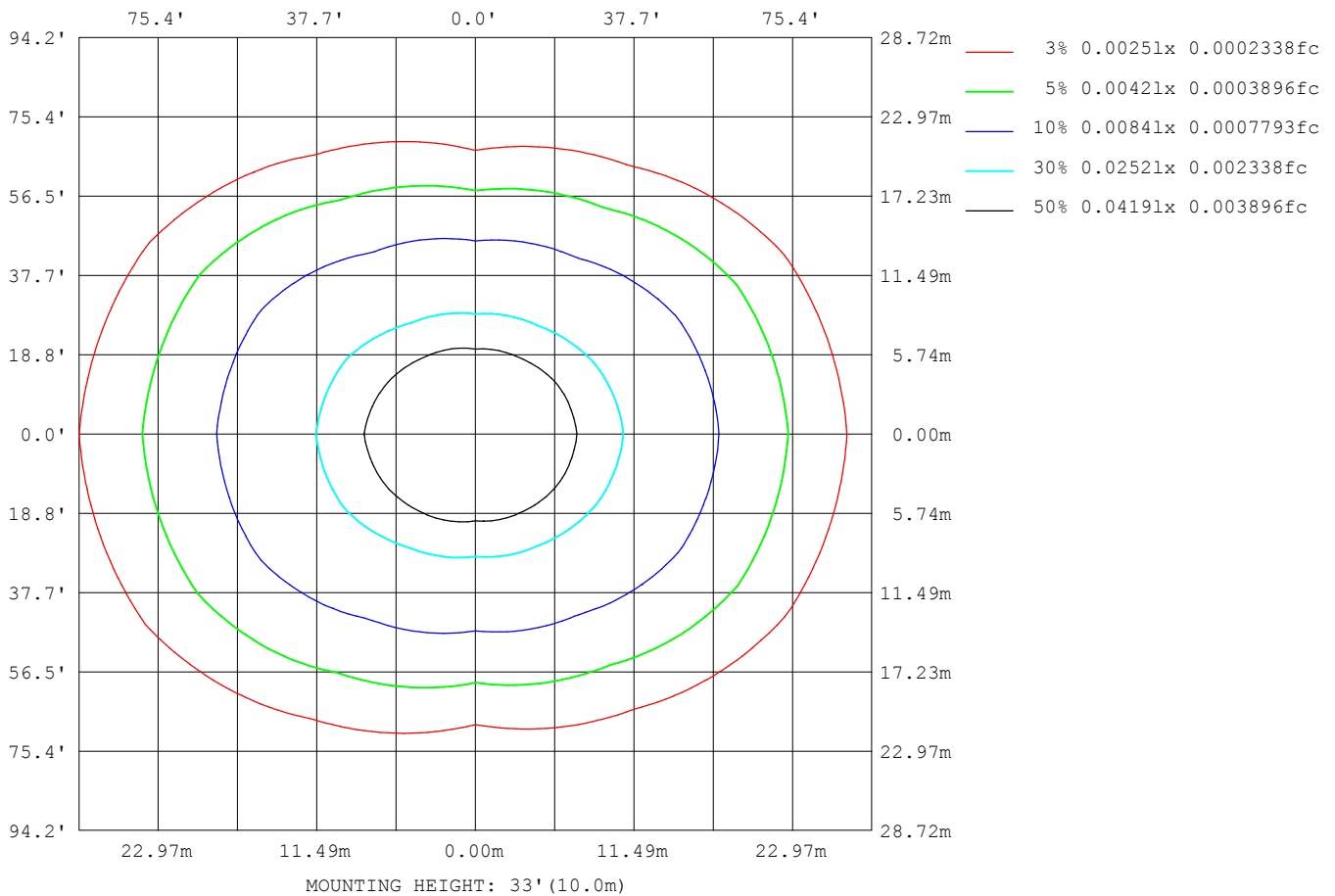
Note: The Curves indicate the illuminated area and the average illumination when the luminaire is at different distance.

C Range: 0 - 360DEG
 C Interval: 30.0DEG
 Test Speed: HIGH
 Temperature: 25.3DEG
 Operators: HXJ
 Test Date: 2022-04-28

γ Range: 0 - 180DEG
 γ Interval: 1.0DEG
 Test System: EVERFINE GO-2000B_V1 SYSTEM V2.0.269
 Humidity: 65.0%
 Test Distance: 9.200m [K=1.0000]
 Remarks:

ISOLUX DIAGRAM

| | | |
|---|---------------------|-----------------------|
| Test:U:24.00V I:0.2347A P:5.633W PF:1.000 Freq:0Hz Lamp Flux:46.6422x1 lm | | |
| NAME: F18-24V-5050-70-SPI3-RGB-B | TYPE: 硅胶 | WEIGHT: |
| SPEC.: | DIM.: 16.5mm*16.5mm | SERIAL No.:2022042801 |
| MFR.: OLYMPIA | SUR.:1*0.0165 | Shielding Angle: |



C Range: 0 - 360DEG
C Interval: 30.0DEG
Test Speed: HIGH
Temperature:25.3DEG
Operators:HXJ
Test Date:2022-04-28

γ Range: 0 - 180DEG
 γ Interval: 1.0DEG
Test System:EVERFINE GO-2000B_V1 SYSTEM V2.0.269
Humidity:65.0%
Test Distance:9.200m [K=1.0000]
Remarks:

LED Avg.L Report

| | | |
|---|---------------------|-----------------------|
| Test:U:24.00V I:0.2347A P:5.633W PF:1.000 Freq:0Hz Lamp Flux:46.6422x1 lm | | |
| NAME: F18-24V-5050-70-SPI3-RGB-B | TYPE:硅胶 | WEIGHT: |
| SPEC.: | DIM.: 16.5mm*16.5mm | SERIAL No.:2022042801 |
| MFR.: OLYMPIA | SUR.:1*0.0165 | Shielding Angle: |

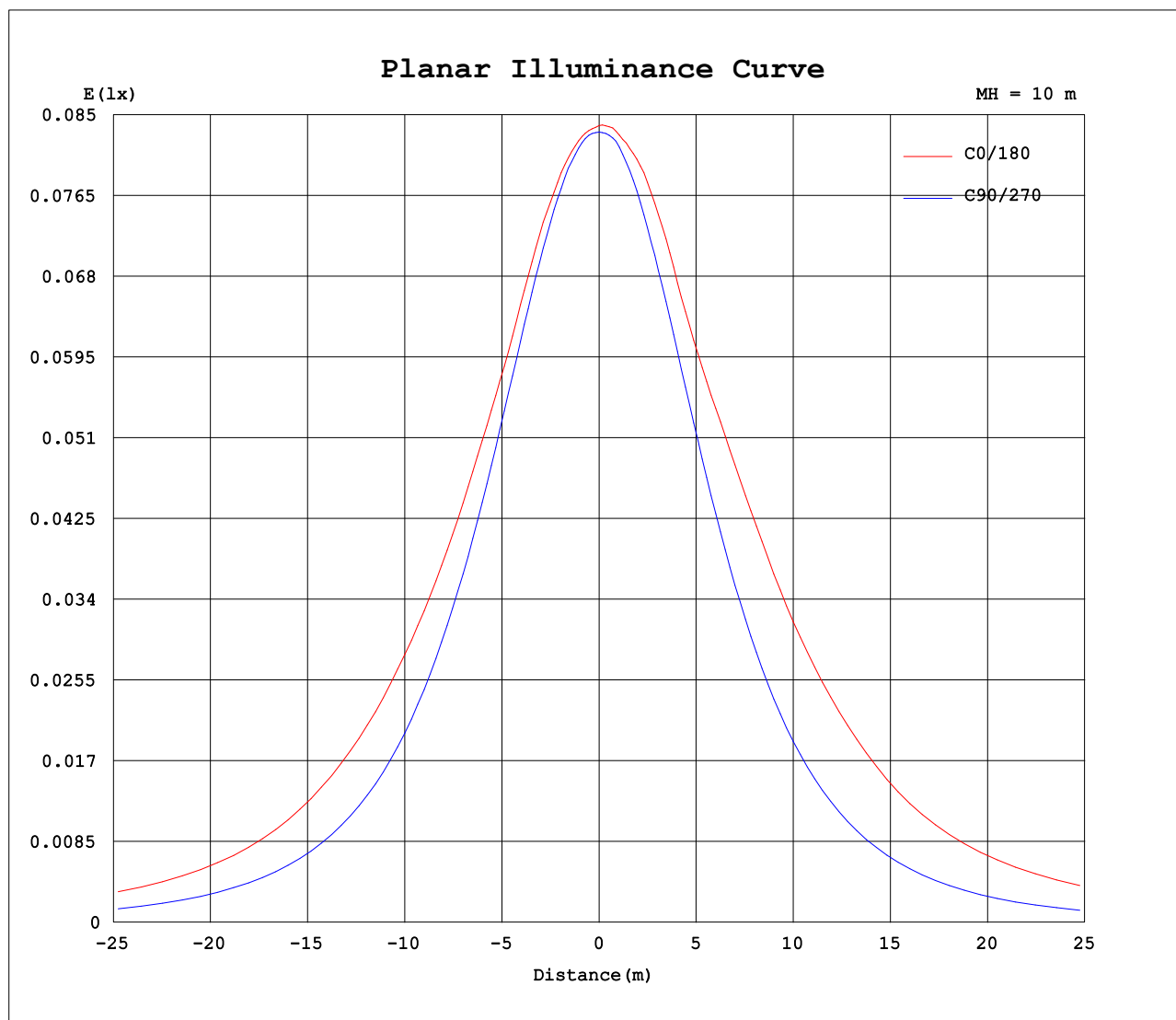
| AvgL | cd/m2 |
|------------------|-------|
| L_0~180 (65) av | 1019 |
| L_0~180 (75) av | 1378 |
| L_0~180 (85) av | 3296 |
| L_90~270 (65) av | 430 |
| L_90~270 (75) av | 393 |
| L_90~270 (85) av | 309 |
| L_45 (65) av | 762 |
| L_45 (75) av | 982 |
| L_45 (85) av | 2122 |

Standard: GB/T 29293-2012

C Range: 0 - 360DEG
C Interval: 30.0DEG
Test Speed: HIGH
Temperature:25.3DEG
Operators:HXJ
Test Date:2022-04-28

γ Range: 0 - 180DEG
γ Interval: 1.0DEG
Test System:EVERFINE GO-2000B_V1 SYSTEM V2.0.269
Humidity:65.0%
Test Distance:9.200m [K=1.0000]
Remarks:

Planar Illuminance Curve



C Range: 0 - 360DEG
C Interval: 30.0DEG
Test Speed: HIGH
Temperature: 25.3DEG
Operators: HXJ
Test Date: 2022-04-28

γ Range: 0 - 180DEG
 γ Interval: 1.0DEG
Test System: EVERFINE GO-2000B_V1 SYSTEM V2.0.269
Humidity: 65.0%
Test Distance: 9.200m [K=1.0000]
Remarks:

LUMINOUS DISTRIBUTION INTENSITY DATA

| | | |
|---|---------------------|-----------------------|
| Test:U:24.00V I:0.2347A P:5.633W PF:1.000 Freq:0Hz Lamp Flux:46.6422x1 lm | | |
| NAME: F18-24V-5050-70-SPI3-RGB-B | TYPE: 硅胶 | WEIGHT: |
| SPEC.: | DIM.: 16.5mm*16.5mm | SERIAL No.:2022042801 |
| MFR.: OLYMPIA | SUR.:1*0.0165 | Shielding Angle: |

Table--1

UNIT: cd

| C (DEG) γ (DEG) | 0 | 30 | 60 | 90 | 120 | 150 | 180 | 210 | 240 | 270 | 300 | 330 | | | | | | |
|--------------------|------|------|------|------|------|------|------|------|------|------|------|------|--|--|--|--|--|--|
| 0 | 8.39 | 8.33 | 8.32 | 8.32 | 8.32 | 8.37 | 8.39 | 8.33 | 8.32 | 8.32 | 8.32 | 8.37 | | | | | | |
| 5 | 8.37 | 8.32 | 8.31 | 8.30 | 8.33 | 8.41 | 8.42 | 8.34 | 8.32 | 8.32 | 8.26 | 8.34 | | | | | | |
| 10 | 8.35 | 8.30 | 8.28 | 8.20 | 8.31 | 8.43 | 8.47 | 8.36 | 8.23 | 8.18 | 8.16 | 8.30 | | | | | | |
| 15 | 8.30 | 8.21 | 8.16 | 8.03 | 8.24 | 8.46 | 8.52 | 8.38 | 8.08 | 7.95 | 8.00 | 8.19 | | | | | | |
| 20 | 8.20 | 8.11 | 7.97 | 7.78 | 8.11 | 8.44 | 8.49 | 8.40 | 7.92 | 7.67 | 7.78 | 8.08 | | | | | | |
| 25 | 8.07 | 7.95 | 7.72 | 7.49 | 7.96 | 8.27 | 8.44 | 8.23 | 7.72 | 7.32 | 7.49 | 7.90 | | | | | | |
| 30 | 8.05 | 7.75 | 7.43 | 7.11 | 7.74 | 8.21 | 8.54 | 8.08 | 7.48 | 6.92 | 7.18 | 7.68 | | | | | | |
| 35 | 8.03 | 7.67 | 7.07 | 6.67 | 7.36 | 8.20 | 8.77 | 8.06 | 7.09 | 6.46 | 6.79 | 7.57 | | | | | | |
| 40 | 8.00 | 7.45 | 6.68 | 6.19 | 6.93 | 8.19 | 8.93 | 8.05 | 6.65 | 5.95 | 6.39 | 7.34 | | | | | | |
| 45 | 7.98 | 7.29 | 6.21 | 5.63 | 6.48 | 8.19 | 8.95 | 8.04 | 6.18 | 5.39 | 5.89 | 7.18 | | | | | | |
| 50 | 7.83 | 7.12 | 5.72 | 5.04 | 5.99 | 8.07 | 8.94 | 7.93 | 5.69 | 4.80 | 5.40 | 6.99 | | | | | | |
| 55 | 7.54 | 6.84 | 5.12 | 4.43 | 5.46 | 7.82 | 8.69 | 7.68 | 5.16 | 4.18 | 4.81 | 6.69 | | | | | | |
| 60 | 7.05 | 6.43 | 4.60 | 3.79 | 4.97 | 7.48 | 8.23 | 7.34 | 4.69 | 3.54 | 4.28 | 6.28 | | | | | | |
| 65 | 6.50 | 5.94 | 4.12 | 3.13 | 4.53 | 6.96 | 7.71 | 6.83 | 4.26 | 2.87 | 3.80 | 5.81 | | | | | | |
| 70 | 5.91 | 5.37 | 3.61 | 2.45 | 4.06 | 6.38 | 7.17 | 6.25 | 3.80 | 2.18 | 3.32 | 5.25 | | | | | | |
| 75 | 5.30 | 4.66 | 3.05 | 1.84 | 3.50 | 5.74 | 6.47 | 5.65 | 3.25 | 1.52 | 2.76 | 4.57 | | | | | | |
| 80 | 4.71 | 4.03 | 2.46 | 1.14 | 2.92 | 5.02 | 5.79 | 4.94 | 2.73 | 0.92 | 2.19 | 3.96 | | | | | | |
| 85 | 4.23 | 3.54 | 1.92 | 0.52 | 2.39 | 4.43 | 5.25 | 4.36 | 2.22 | 0.37 | 1.68 | 3.47 | | | | | | |
| 90 | 4.09 | 3.38 | 1.65 | 0.27 | 2.12 | 4.22 | 5.11 | 4.06 | 1.91 | 0.13 | 1.51 | 3.28 | | | | | | |
| 95 | 4.14 | 3.48 | 1.60 | 0.23 | 2.03 | 4.26 | 5.17 | 4.07 | 1.85 | 0.12 | 1.46 | 3.32 | | | | | | |
| 100 | 4.21 | 3.52 | 1.37 | 0.21 | 1.96 | 4.39 | 5.13 | 4.24 | 1.78 | 0.12 | 1.15 | 3.41 | | | | | | |
| 105 | 4.23 | 3.23 | 1.31 | 0.20 | 1.90 | 4.40 | 5.10 | 4.30 | 1.73 | 0.12 | 1.07 | 3.29 | | | | | | |
| 110 | 4.01 | 2.95 | 1.26 | 0.20 | 1.89 | 4.24 | 5.04 | 4.20 | 1.72 | 0.12 | 1.05 | 2.96 | | | | | | |
| 115 | 3.74 | 2.81 | 1.23 | 0.20 | 1.85 | 3.91 | 4.82 | 3.86 | 1.69 | 0.12 | 1.03 | 2.71 | | | | | | |
| 120 | 3.43 | 2.58 | 1.13 | 0.20 | 1.71 | 3.55 | 4.42 | 3.52 | 1.57 | 0.12 | 0.98 | 2.53 | | | | | | |
| 125 | 3.11 | 2.31 | 0.85 | 0.18 | 1.55 | 3.24 | 3.96 | 3.22 | 1.41 | 0.12 | 0.71 | 2.25 | | | | | | |
| 130 | 2.75 | 2.12 | 0.73 | 0.16 | 1.26 | 2.88 | 3.51 | 2.88 | 1.15 | 0.12 | 0.62 | 1.95 | | | | | | |
| 135 | 2.40 | 1.76 | 0.61 | 0.16 | 1.09 | 2.49 | 3.05 | 2.50 | 0.99 | 0.12 | 0.53 | 1.68 | | | | | | |
| 140 | 2.01 | 1.26 | 0.52 | 0.16 | 0.90 | 2.07 | 2.56 | 2.08 | 0.82 | 0.12 | 0.44 | 1.24 | | | | | | |
| 145 | 1.65 | 0.81 | 0.46 | 0.16 | 0.74 | 1.63 | 2.04 | 1.61 | 0.66 | 0.13 | 0.34 | 0.86 | | | | | | |
| 150 | 1.07 | 0.62 | 0.38 | 0.16 | 0.57 | 1.23 | 1.52 | 1.26 | 0.50 | 0.13 | 0.27 | 0.68 | | | | | | |
| 155 | 0.90 | 0.47 | 0.30 | 0.16 | 0.43 | 0.93 | 1.15 | 0.97 | 0.37 | 0.13 | 0.20 | 0.53 | | | | | | |
| 160 | 0.73 | 0.34 | 0.25 | 0.16 | 0.34 | 0.66 | 0.83 | 0.69 | 0.28 | 0.13 | 0.16 | 0.37 | | | | | | |
| 165 | 0.40 | 0.22 | 0.20 | 0.16 | 0.27 | 0.42 | 0.49 | 0.46 | 0.22 | 0.13 | 0.15 | 0.25 | | | | | | |
| 170 | 0.21 | 0.18 | 0.18 | 0.16 | 0.23 | 0.27 | 0.20 | 0.30 | 0.19 | 0.13 | 0.14 | 0.20 | | | | | | |
| 175 | 0.17 | 0.16 | 0.17 | 0.16 | 0.22 | 0.19 | 0.17 | 0.23 | 0.18 | 0.13 | 0.14 | 0.18 | | | | | | |
| 180 | 0.16 | 0.16 | 0.16 | 0.16 | 0.18 | 0.18 | 0.16 | 0.18 | 0.18 | 0.13 | 0.14 | 0.17 | | | | | | |

C Range: 0 - 360DEG
C Interval: 30.0DEG
Test Speed: HIGH
Temperature:25.3DEG
Operators:HXJ
Test Date:2022-04-28

γ Range: 0 - 180DEG
γ Interval: 1.0DEG
Test System:EVERFINE GO-2000B_V1 SYSTEM V2.0.269
Humidity:65.0%
Test Distance:9.200m [K=1.0000]
Remarks:

Photometric Data Table [cd]

| G/C | 0.0 | 30.0 | 60.0 | 90.0 | 120.0 | 150.0 | 180.0 | 210.0 | 240.0 | 270.0 |
|-------|--------|--------|--------|--------|--------|--------|--------|--------|--------|--------|
| 0.0 | 8.388 | 8.328 | 8.323 | 8.318 | 8.323 | 8.373 | 8.388 | 8.328 | 8.323 | 8.318 |
| 3.0 | 8.368 | 8.323 | 8.323 | 8.318 | 8.338 | 8.408 | 8.408 | 8.343 | 8.318 | 8.318 |
| 6.0 | 8.364 | 8.326 | 8.305 | 8.282 | 8.326 | 8.414 | 8.423 | 8.353 | 8.302 | 8.293 |
| 9.0 | 8.351 | 8.307 | 8.288 | 8.237 | 8.314 | 8.428 | 8.454 | 8.355 | 8.242 | 8.212 |
| 12.0 | 8.323 | 8.272 | 8.232 | 8.141 | 8.303 | 8.448 | 8.509 | 8.362 | 8.167 | 8.097 |
| 15.0 | 8.303 | 8.207 | 8.157 | 8.031 | 8.237 | 8.458 | 8.524 | 8.377 | 8.081 | 7.951 |
| 18.0 | 8.253 | 8.162 | 8.057 | 7.905 | 8.162 | 8.458 | 8.516 | 8.393 | 7.990 | 7.790 |
| 21.0 | 8.177 | 8.071 | 7.921 | 7.739 | 8.077 | 8.408 | 8.478 | 8.378 | 7.885 | 7.605 |
| 24.0 | 8.097 | 7.996 | 7.775 | 7.548 | 7.991 | 8.317 | 8.433 | 8.268 | 7.774 | 7.393 |
| 27.0 | 8.060 | 7.860 | 7.615 | 7.342 | 7.891 | 8.224 | 8.454 | 8.152 | 7.639 | 7.167 |
| 30.0 | 8.054 | 7.755 | 7.434 | 7.106 | 7.735 | 8.207 | 8.544 | 8.077 | 7.478 | 6.916 |
| 33.0 | 8.048 | 7.709 | 7.218 | 6.854 | 7.519 | 8.203 | 8.680 | 8.069 | 7.256 | 6.655 |
| 36.0 | 8.011 | 7.634 | 7.002 | 6.588 | 7.288 | 8.199 | 8.785 | 8.062 | 7.010 | 6.368 |
| 39.0 | 8.002 | 7.503 | 6.756 | 6.291 | 7.017 | 8.195 | 8.891 | 8.055 | 6.733 | 6.052 |
| 42.0 | 7.989 | 7.388 | 6.489 | 5.975 | 6.751 | 8.191 | 8.937 | 8.048 | 6.462 | 5.730 |
| 45.0 | 7.976 | 7.292 | 6.208 | 5.633 | 6.484 | 8.187 | 8.954 | 8.041 | 6.181 | 5.394 |
| 48.0 | 7.896 | 7.207 | 5.926 | 5.286 | 6.198 | 8.141 | 8.971 | 8.001 | 5.899 | 5.042 |
| 51.0 | 7.780 | 7.081 | 5.600 | 4.929 | 5.891 | 8.026 | 8.910 | 7.886 | 5.587 | 4.680 |
| 54.0 | 7.620 | 6.910 | 5.238 | 4.552 | 5.565 | 7.870 | 8.784 | 7.735 | 5.266 | 4.303 |
| 57.0 | 7.374 | 6.679 | 4.906 | 4.175 | 5.258 | 7.699 | 8.513 | 7.569 | 4.964 | 3.926 |
| 60.0 | 7.052 | 6.432 | 4.600 | 3.788 | 4.971 | 7.482 | 8.226 | 7.338 | 4.688 | 3.539 |
| 63.0 | 6.736 | 6.156 | 4.303 | 3.406 | 4.705 | 7.176 | 7.909 | 7.042 | 4.432 | 3.137 |
| 66.0 | 6.384 | 5.829 | 4.027 | 3.004 | 4.444 | 6.844 | 7.608 | 6.725 | 4.175 | 2.735 |
| 69.0 | 6.032 | 5.492 | 3.720 | 2.602 | 4.157 | 6.492 | 7.291 | 6.369 | 3.884 | 2.323 |
| 72.0 | 5.670 | 5.095 | 3.389 | 2.200 | 3.841 | 6.130 | 6.904 | 6.022 | 3.572 | 1.911 |
| 75.0 | 5.299 | 4.663 | 3.052 | 1.838 | 3.499 | 5.738 | 6.472 | 5.645 | 3.246 | 1.519 |
| 78.0 | 4.932 | 4.266 | 2.710 | 1.426 | 3.152 | 5.301 | 6.060 | 5.208 | 2.924 | 1.142 |
| 81.0 | 4.600 | 3.914 | 2.338 | 0.9888 | 2.801 | 4.889 | 5.668 | 4.806 | 2.617 | 0.7900 |
| 84.0 | 4.313 | 3.618 | 2.002 | 0.6172 | 2.484 | 4.527 | 5.331 | 4.454 | 2.311 | 0.4634 |
| 87.0 | 4.147 | 3.407 | 1.760 | 0.3463 | 2.232 | 4.276 | 5.121 | 4.202 | 2.060 | 0.2318 |
| 90.0 | 4.091 | 3.377 | 1.653 | 0.2695 | 2.116 | 4.223 | 5.106 | 4.056 | 1.910 | 0.1308 |
| 93.0 | 4.121 | 3.428 | 1.621 | 0.2444 | 2.061 | 4.202 | 5.156 | 4.062 | 1.880 | 0.1247 |
| 96.0 | 4.161 | 3.513 | 1.589 | 0.2241 | 2.025 | 4.287 | 5.171 | 4.091 | 1.829 | 0.1236 |
| 99.0 | 4.211 | 3.538 | 1.408 | 0.2133 | 1.970 | 4.388 | 5.136 | 4.201 | 1.799 | 0.1225 |
| 102.0 | 4.222 | 3.482 | 1.342 | 0.2061 | 1.935 | 4.403 | 5.111 | 4.292 | 1.749 | 0.1214 |
| 105.0 | 4.232 | 3.231 | 1.307 | 0.2011 | 1.905 | 4.402 | 5.096 | 4.302 | 1.732 | 0.1203 |
| 108.0 | 4.081 | 3.045 | 1.272 | 0.1996 | 1.897 | 4.312 | 5.066 | 4.282 | 1.724 | 0.1192 |
| 111.0 | 3.961 | 2.925 | 1.255 | 0.1999 | 1.890 | 4.186 | 5.015 | 4.157 | 1.718 | 0.1181 |
| 114.0 | 3.795 | 2.849 | 1.237 | 0.2003 | 1.870 | 3.995 | 4.874 | 3.941 | 1.713 | 0.1170 |
| 117.0 | 3.624 | 2.749 | 1.219 | 0.2006 | 1.810 | 3.733 | 4.668 | 3.715 | 1.648 | 0.1165 |
| 120.0 | 3.433 | 2.583 | 1.132 | 0.1958 | 1.709 | 3.548 | 4.417 | 3.524 | 1.568 | 0.1171 |
| 123.0 | 3.237 | 2.442 | 0.9051 | 0.1809 | 1.609 | 3.362 | 4.125 | 3.343 | 1.492 | 0.1177 |
| 126.0 | 3.036 | 2.292 | 0.8245 | 0.1658 | 1.498 | 3.171 | 3.879 | 3.152 | 1.376 | 0.1183 |
| 129.0 | 2.820 | 2.176 | 0.7441 | 0.1608 | 1.323 | 2.949 | 3.602 | 2.951 | 1.196 | 0.1189 |
| 132.0 | 2.614 | 2.010 | 0.6688 | 0.1608 | 1.186 | 2.733 | 3.326 | 2.730 | 1.085 | 0.1195 |
| 135.0 | 2.403 | 1.758 | 0.6084 | 0.1608 | 1.086 | 2.492 | 3.055 | 2.503 | 0.9896 | 0.1201 |
| 138.0 | 2.162 | 1.517 | 0.5581 | 0.1608 | 0.9654 | 2.241 | 2.758 | 2.252 | 0.8841 | 0.1207 |
| 141.0 | 1.951 | 1.150 | 0.5078 | 0.1608 | 0.8698 | 1.979 | 2.461 | 1.976 | 0.7836 | 0.1249 |
| 144.0 | 1.735 | 0.8840 | 0.4775 | 0.1608 | 0.7793 | 1.713 | 2.155 | 1.689 | 0.6882 | 0.1279 |
| 147.0 | 1.499 | 0.7033 | 0.4274 | 0.1608 | 0.6689 | 1.472 | 1.808 | 1.468 | 0.5926 | 0.1281 |
| 150.0 | 1.072 | 0.6179 | 0.3770 | 0.1608 | 0.5683 | 1.231 | 1.522 | 1.262 | 0.5020 | 0.1284 |
| 153.0 | 0.9548 | 0.5375 | 0.3168 | 0.1608 | 0.4778 | 1.045 | 1.291 | 1.081 | 0.4117 | 0.1286 |
| 156.0 | 0.8848 | 0.4421 | 0.2915 | 0.1608 | 0.4123 | 0.8842 | 1.080 | 0.9152 | 0.3466 | 0.1289 |
| 159.0 | 0.7794 | 0.3617 | 0.2515 | 0.1608 | 0.3670 | 0.7182 | 0.8839 | 0.7443 | 0.2913 | 0.1292 |
| 162.0 | 0.5991 | 0.2814 | 0.2263 | 0.1608 | 0.3118 | 0.5473 | 0.6925 | 0.5885 | 0.2561 | 0.1294 |
| 165.0 | 0.4027 | 0.2160 | 0.1961 | 0.1608 | 0.2716 | 0.4218 | 0.4869 | 0.4577 | 0.2152 | 0.1297 |
| 168.0 | 0.3018 | 0.1808 | 0.1860 | 0.1608 | 0.2413 | 0.3113 | 0.3512 | 0.3571 | 0.1980 | 0.1299 |
| 171.0 | 0.1911 | 0.1724 | 0.1809 | 0.1608 | 0.2262 | 0.2259 | 0.1909 | 0.2766 | 0.1851 | 0.1302 |
| 174.0 | 0.1809 | 0.1641 | 0.1809 | 0.1608 | 0.2211 | 0.1960 | 0.1759 | 0.2313 | 0.1805 | 0.1304 |
| 177.0 | 0.1658 | 0.1558 | 0.1609 | 0.1608 | 0.2011 | 0.1859 | 0.1608 | 0.2162 | 0.1759 | 0.1307 |
| 180.0 | 0.1558 | 0.1558 | 0.1608 | 0.1608 | 0.1809 | 0.1759 | 0.1608 | 0.1809 | 0.1759 | 0.1307 |
| G/C | 300.0 | 330.0 | | | | | | | | |
| 0.0 | 8.323 | 8.373 | | | | | | | | |
| 3.0 | 8.302 | 8.353 | | | | | | | | |
| 6.0 | 8.247 | 8.328 | | | | | | | | |
| 9.0 | 8.177 | 8.308 | | | | | | | | |
| 12.0 | 8.091 | 8.262 | | | | | | | | |
| 15.0 | 7.996 | 8.187 | | | | | | | | |
| 18.0 | 7.875 | 8.137 | | | | | | | | |
| 21.0 | 7.724 | 8.037 | | | | | | | | |
| 24.0 | 7.548 | 7.941 | | | | | | | | |
| 27.0 | 7.372 | 7.790 | | | | | | | | |
| 30.0 | 7.176 | 7.685 | | | | | | | | |

C Range: 0 - 360DEG
 C Interval: 30.0DEG
 Test Speed: HIGH
 Temperature: 25.3DEG
 Operators: HXJ
 Test Date: 2022-04-28

γ Range: 0 - 180DEG
 γ Interval: 1.0DEG
 Test System: EVERFINE GO-2000B_V1 SYSTEM V2.0.269
 Humidity: 65.0%
 Test Distance: 9.200m [K=1.0000]
 Remarks:

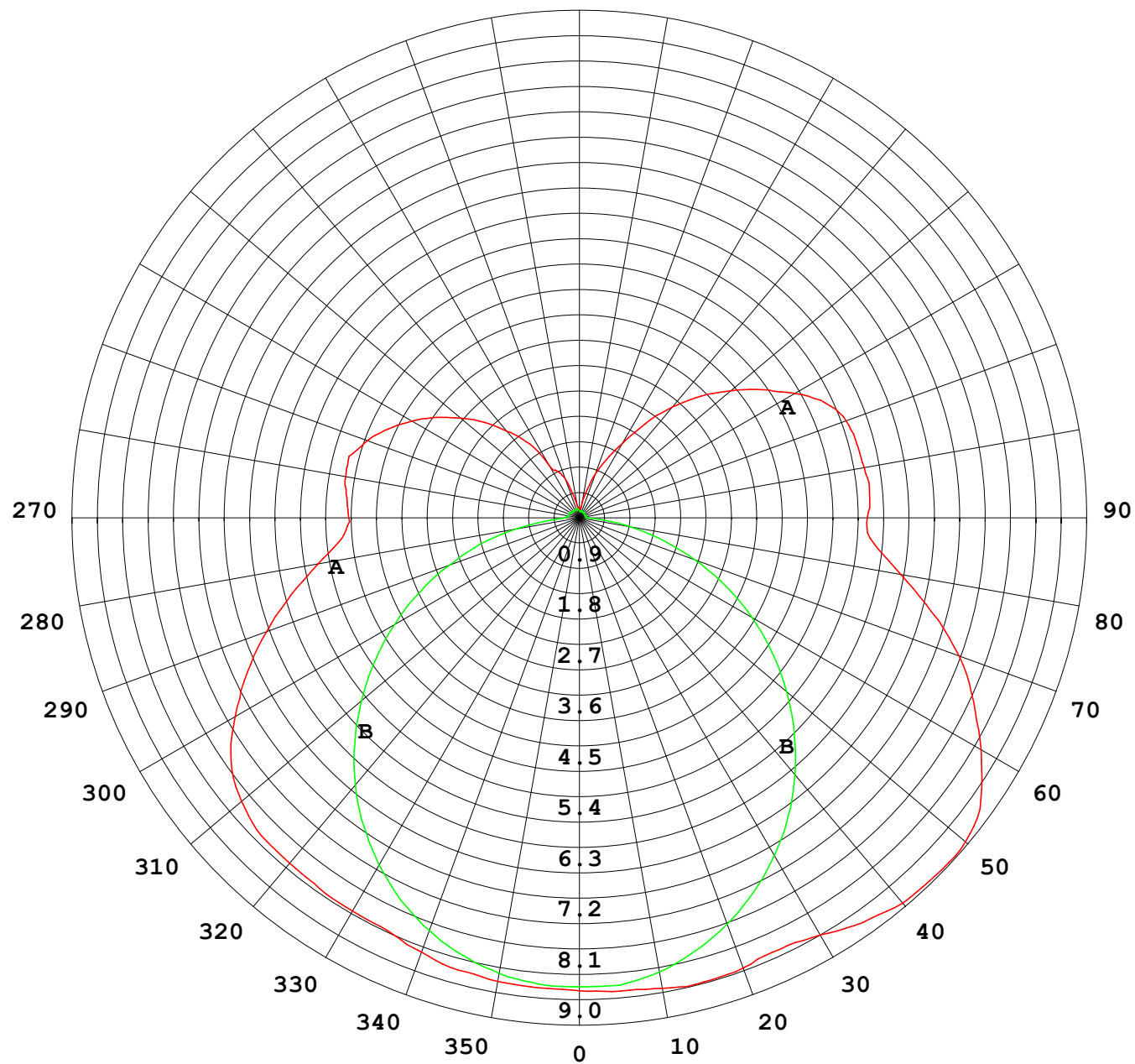
Photometric Data Table [cd]

| | | |
|-------|--------|--------|
| 33.0 | 6.950 | 7.634 |
| 36.0 | 6.719 | 7.544 |
| 39.0 | 6.477 | 7.393 |
| 42.0 | 6.191 | 7.278 |
| 45.0 | 5.894 | 7.177 |
| 48.0 | 5.607 | 7.077 |
| 51.0 | 5.281 | 6.941 |
| 54.0 | 4.929 | 6.760 |
| 57.0 | 4.597 | 6.539 |
| 60.0 | 4.281 | 6.283 |
| 63.0 | 3.989 | 6.012 |
| 66.0 | 3.713 | 5.700 |
| 69.0 | 3.411 | 5.363 |
| 72.0 | 3.090 | 4.992 |
| 75.0 | 2.763 | 4.570 |
| 78.0 | 2.421 | 4.172 |
| 81.0 | 2.079 | 3.841 |
| 84.0 | 1.773 | 3.554 |
| 87.0 | 1.547 | 3.353 |
| 90.0 | 1.513 | 3.283 |
| 93.0 | 1.479 | 3.286 |
| 96.0 | 1.351 | 3.347 |
| 99.0 | 1.191 | 3.417 |
| 102.0 | 1.091 | 3.417 |
| 105.0 | 1.070 | 3.287 |
| 108.0 | 1.055 | 3.112 |
| 111.0 | 1.040 | 2.915 |
| 114.0 | 1.036 | 2.744 |
| 117.0 | 1.032 | 2.644 |
| 120.0 | 0.9792 | 2.528 |
| 123.0 | 0.7735 | 2.373 |
| 126.0 | 0.7035 | 2.162 |
| 129.0 | 0.6380 | 1.971 |
| 132.0 | 0.5980 | 1.905 |
| 135.0 | 0.5326 | 1.679 |
| 138.0 | 0.4772 | 1.458 |
| 141.0 | 0.4269 | 1.142 |
| 144.0 | 0.3517 | 0.9101 |
| 147.0 | 0.3114 | 0.7942 |
| 150.0 | 0.2710 | 0.6788 |
| 153.0 | 0.2061 | 0.5833 |
| 156.0 | 0.1908 | 0.5028 |
| 159.0 | 0.1608 | 0.4074 |
| 162.0 | 0.1534 | 0.3119 |
| 165.0 | 0.1498 | 0.2515 |
| 168.0 | 0.1463 | 0.2112 |
| 171.0 | 0.1428 | 0.1860 |
| 174.0 | 0.1392 | 0.1759 |
| 177.0 | 0.1357 | 0.1709 |
| 180.0 | 0.1357 | 0.1709 |

C Range: 0 - 360DEG
 C Interval: 30.0DEG
 Test Speed: HIGH
 Temperature: 25.3DEG
 Operators: HXJ
 Test Date: 2022-04-28

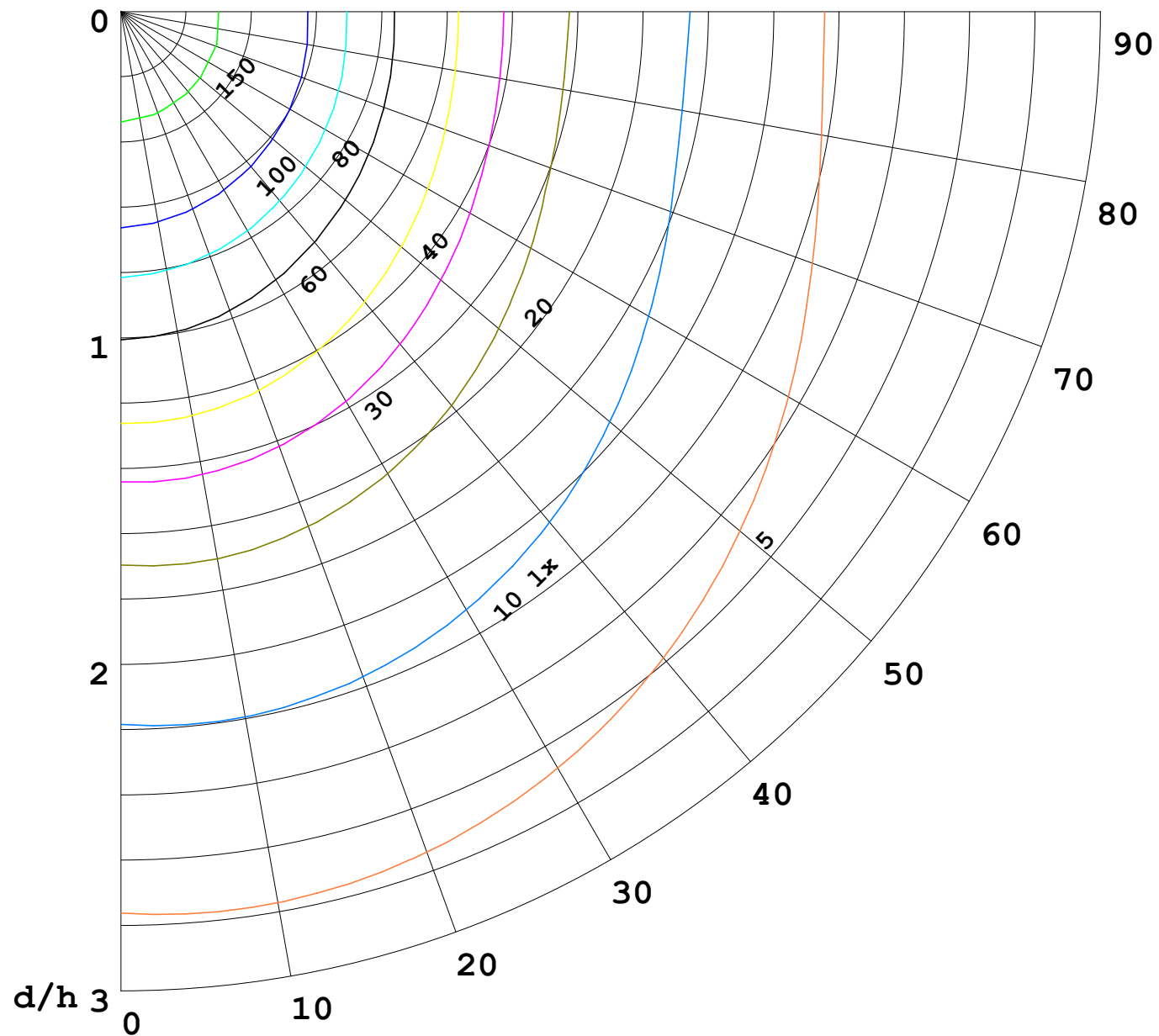
γ Range: 0 - 180DEG
 γ Interval: 1.0DEG
 Test System: EVERFINE GO-2000B_V1 SYSTEM V2.0.269
 Humidity: 65.0%
 Test Distance: 9.200m [K=1.0000]
 Remarks:

I (cd)



1000 lm

$\kappa = 1$



F = 5000 lm
 K = 0.7
 Hcc = 0.0 m
 Hfc = 0.0 m
 Eave = 100 lx

| | Pcc | Pw | Pfc |
|---|-----|----|-----|
| — | 70 | 50 | 30 |
| — | 50 | 30 | 20 |

