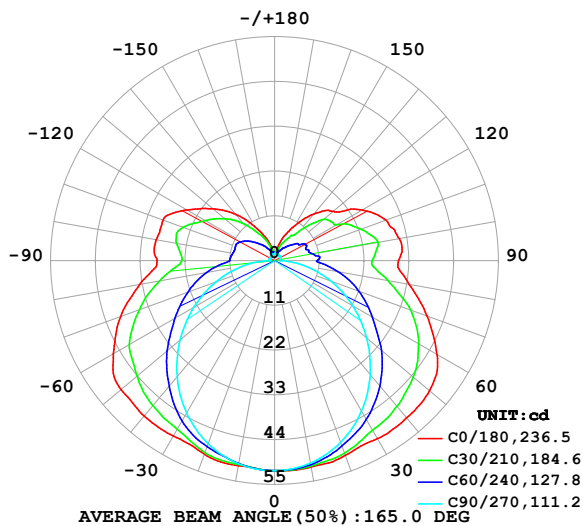


## LUMINAIRE PHOTOMETRIC TEST REPORT

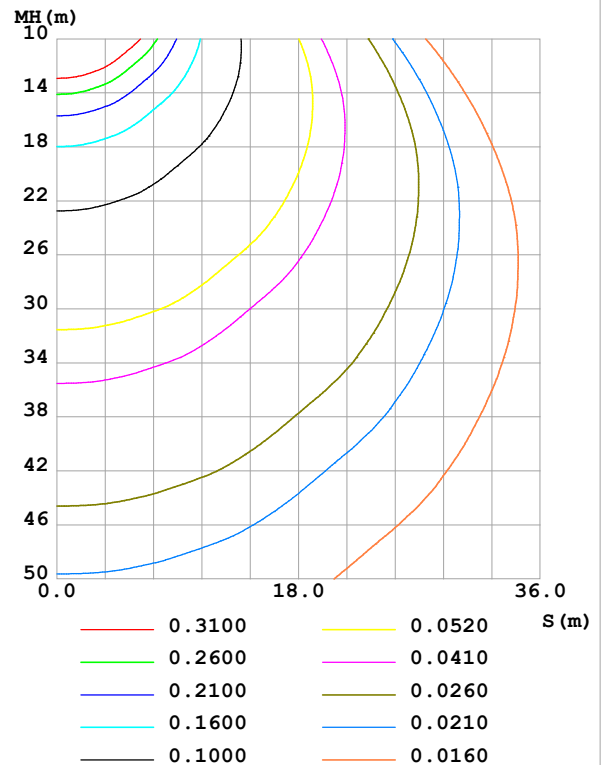
Test:U:24.00V I:0.4679A P:11.23W PF:1.000 Freq:0Hz Lamp Flux:290.662x1 lm		
NAME: SF18-24V-5050-70-SPI-RGBW(4000K)-W	TYPE:	WEIGHT:
SPEC.:	DIM.: Length=1m	SERIAL No.:
MFR.: Olym pia lighting	SUR.:	Shielding Angle:

DATA OF LAMP		PHOTOMETRIC DATA Eff: 25.88 lm/W			
MODEL	5050	Imax (cd)	51.69	S/MH(C0/180)	1.49
NOMINAL POWER(W)		LOR(%)	100.0	S/MH(C90/270)	1.25
RATED VOLTAGE(V)	24	TOTAL FLUX(lm)	290.66	$\eta$ UP,DN(C0-180)	13.3,36.5
NOMINAL FLUX(lm)	290.662	CIE CLASS	SEMI-D.	$\eta$ UP,DN(C180-360)	13.1,37.1
LAMPS INSIDE	1	$\eta$ up (%)	26.4	CIBSE SHR NOM	1.50
TEST VOLTAGE(V)		$\eta$ down (%)	73.6	CIBSE SHR MAX	1.55

LUMINOUS INTENSITY DISTRIBUTION DIAGRAM



C0 PLANE ISOLUX DIAGRAM (UNIT:lx)



C Range: 0 - 360DEG  
C Interval: 30.0DEG  
Test Speed: HIGH  
Temperature:25.3℃  
Operators:  
Test Date:2025-03-14

$\gamma$  Range: 0 - 180DEG  
 $\gamma$  Interval: 1.0DEG  
Test System:EVERFINE GO-2000B\_V1 SYSTEM V2.00.488  
Humidity:65.0%  
Test Distance:6.360m [K=1.0000]  
Remarks:

## ZONAL FLUX DIAGRAM

## ZONAL FLUX DIAGRAM:

$\gamma$	C0	C45	C90	C135	C180	C225	C270	C315	$\gamma$	$\Phi$ zone	$\Phi$ total	%lum, lamp
10	51.51	51.10	50.52	50.66	51.17	50.76	50.71	51.25	0- 10	4.893	4.893	1.68,1.68
20	50.91	49.37	47.51	49.21	50.59	49.39	47.85	49.65	10- 20	14.22	19.12	6.58,6.58
30	50.46	46.60	42.72	46.33	49.72	46.66	43.23	46.98	20- 30	22.17	41.29	14.2,14.2
40	50.46	43.48	36.55	42.98	49.86	43.41	37.26	44.01	30- 40	28.32	69.61	23.9,23.9
50	49.73	39.39	29.52	38.83	49.28	39.30	30.31	40.05	40- 50	32.15	101.8	35,35
60	46.08	34.29	22.13	34.22	45.75	34.73	22.92	35.26	50- 60	33.21	135.0	46.4,46.4
70	39.88	28.81	14.66	28.65	40.26	29.01	15.38	30.21	60- 70	31.35	166.3	57.2,57.2
80	33.58	22.01	7.453	22.59	33.65	22.85	8.031	23.85	70- 80	26.86	193.2	66.5,66.5
90	30.42	17.24	1.307	17.21	28.86	16.90	1.406	18.21	80- 90	20.74	213.9	73.6,73.6
100	31.13	17.71	1.353	17.82	29.55	17.46	1.272	17.87	90-100	18.62	232.5	80,80
110	29.11	15.45	1.446	17.39	29.18	17.14	1.376	16.20	100-110	17.66	250.2	86.1,86.1
120	24.88	13.00	1.527	14.73	24.90	14.56	1.408	13.57	110-120	14.97	265.2	91.2,91.2
130	18.90	11.07	1.616	11.78	19.83	11.64	1.408	10.86	120-130	11.07	276.2	95,95
140	14.94	6.975	1.651	8.640	14.81	8.528	1.402	6.801	130-140	7.377	283.6	97.6,97.6
150	9.888	4.652	1.700	5.644	9.512	5.562	1.451	4.040	140-150	4.109	287.7	99,99
160	6.061	2.923	1.735	3.554	5.633	3.519	1.601	2.646	150-160	1.990	289.7	99.7,99.7
170	2.189	2.012	1.755	2.243	2.245	2.269	1.706	1.913	160-170	0.7623	290.5	99.9,99.9
180	1.871	1.840	1.778	1.787	1.868	1.849	1.766	1.774	170-180	0.1880	290.7	100,100
DEG	LUMINOUS INTENSITY:cd									UNIT:lm		

Conical surface Flux(90deg): 85.367 lm

%lum = 29.4%

%lamp = 29.4%

Conical surface Flux(130deg): 151.05 lm

%lum = 52.0%

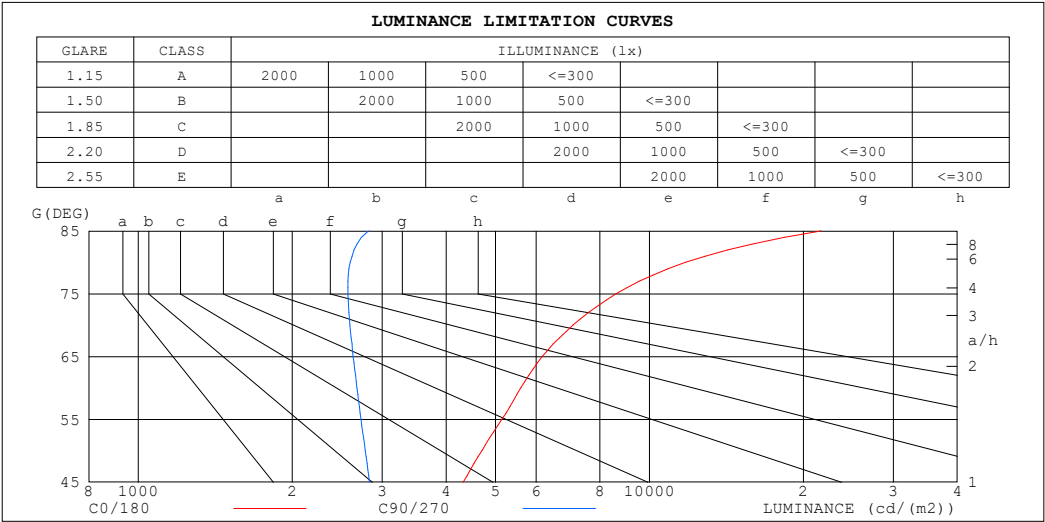
%lamp = 52.0%

C Range: 0 - 360DEG  
 C Interval: 30.0DEG  
 Test Speed: HIGH  
 Temperature:25.3℃  
 Operators:  
 Test Date:2025-03-14

$\gamma$  Range: 0 - 180DEG  
 $\gamma$  Interval: 1.0DEG  
 Test System:EVERFINE GO-2000B\_V1 SYSTEM V2.00.488  
 Humidity:65.0%  
 Test Distance:6.360m [K=1.0000]  
 Remarks:

LUMINANCE LIMITATION CURVES

Test:U:24.00V I:0.4679A P:11.23W PF:1.000 Freq:0Hz Lamp Flux:290.662x1 lm		
NAME: SF18-24V-5050-70-SPI-RGBW(4000K)-W	TYPE:	WEIGHT:
SPEC.:	DIM.: Length=1m	SERIAL No.:
MFR.: OLYMPIA lighting	SUR.:	Shielding Angle:



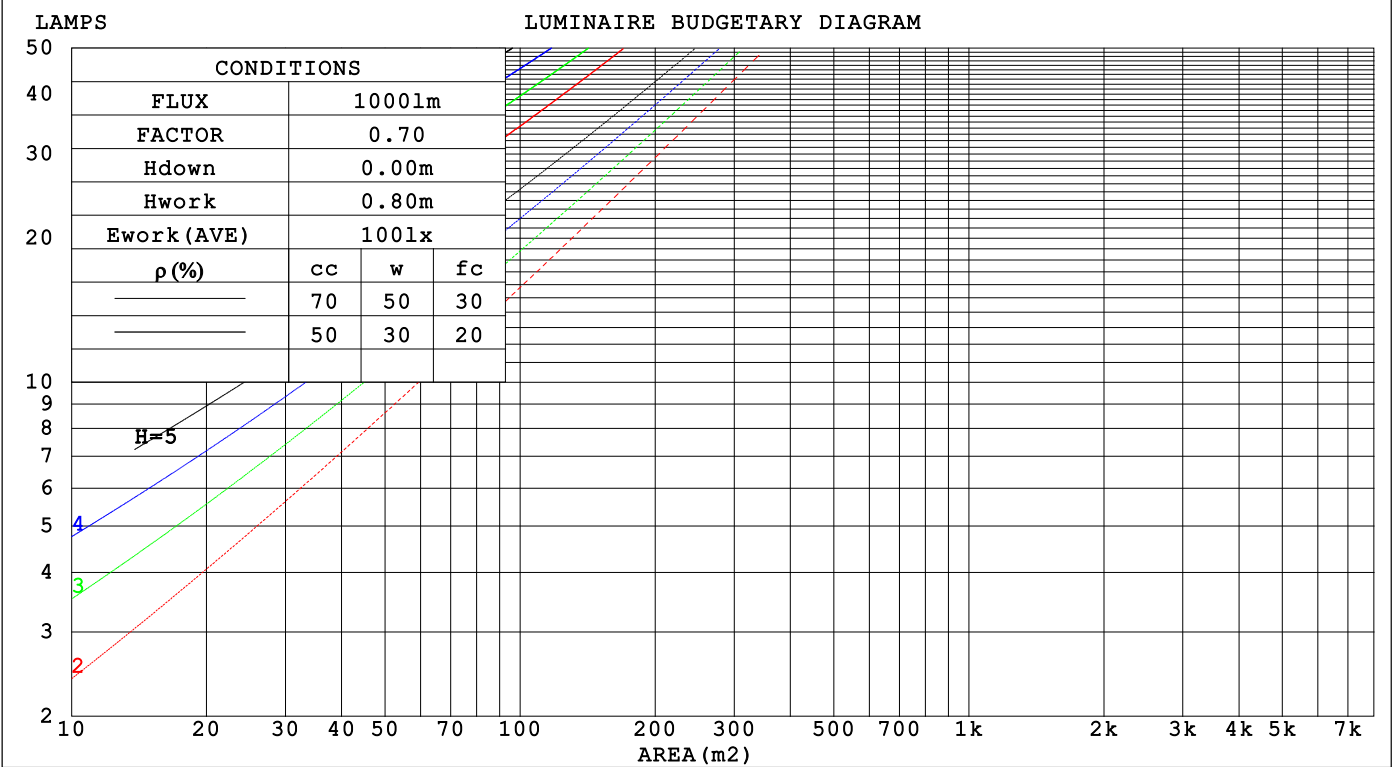
LUMINANCE cd/(m2)		
G (DEG)	C0/180	C90/270
85	21642	2817
80	11751	2597
75	8609	2572
70	7085	2593
65	6170	2632
60	5600	2678
55	5144	2725
50	4701	2779
45	4320	2833

C Range: 0 - 360DEG	γ Range: 0 - 180DEG
C Interval: 30.0DEG	γ Interval: 1.0DEG
Test Speed: HIGH	Test System:EVERFINE GO-2000B_V1 SYSTEM V2.00.488
Temperature:25.3℃	Humidity:65.0%
Operators:	Test Distance:6.360m [K=1.0000]
Test Date:2025-03-14	Remarks:

CU AND LUMINAIRE BUDGETARY ESTIMATE DIAGRAM

Test:U:24.00V I:0.4679A P:11.23W PF:1.000 Freq:0Hz		
Lamp Flux:290.662x1 lm		
NAME: SF18-24V-5050-70-SPI-RGBW(4000K)-W	TYPE:	WEIGHT:
SPEC.:	DIM.: Length=1m	SERIAL No.:
MFR.: OLYMPIA lighting	SUR.:	Shielding Angle:

pcc	80%			70%			50%			30%			10%			0
p <sub>w</sub>	50%	30%	10%	50%	30%	10%	50%	30%	10%	50%	30%	10%	50%	30%	10%	0
p <sub>fc</sub>	20%			20%			20%			20%			20%			0
RCR	RCR:Room Cavity Ratio															



C Range: 0 - 360DEG  
C Interval: 30.0DEG  
Test Speed: HIGH  
Temperature:25.3℃  
Operators:  
Test Date:2025-03-14

γ Range: 0 - 180DEG  
γ Interval: 1.0DEG  
Test System:EVERFINE GO-2000B\_V1 SYSTEM V2.00.488  
Humidity:65.0%  
Test Distance:6.360m [K=1.0000]  
Remarks:

## WEC AND CCEC

Test:U:24.00V I:0.4679A P:11.23W PF:1.000 Freq:0Hz Lamp Flux:290.662x1 lm		
NAME: SF18-24V-5050-70-SPI-RGBW(4000K)-W	TYPE:	WEIGHT:
SPEC.:	DIM.: Length=1m	SERIAL No.:
MFR.: OLympia lighting	SUR.:	Shielding Angle:

pcc	80%			70%			50%			30%			10%			0														
pw	50%	30%	10%	50%	30%	10%	50%	30%	10%	50%	30%	10%	50%	30%	10%	0														
pfc	20%			20%			20%			20%			20%			0														
RCR	RCR:Room Cavity Ratio															Wall Exitance Coefficients(WEC)														
0.0																														
1.0	.382	.217	.069	.367	.209	.067	.339	.194	.062	.312	.180	.058	.288	.167	.054															
2.0	.331	.181	.056	.317	.175	.054	.291	.162	.050	.267	.150	.047	.245	.139	.044															
3.0	.294	.156	.047	.282	.151	.045	.258	.140	.042	.236	.129	.040	.216	.120	.037															
4.0	.265	.137	.040	.253	.133	.039	.232	.123	.037	.212	.114	.034	.193	.105	.032															
5.0	.240	.123	.035	.230	.118	.034	.210	.110	.032	.192	.101	.030	.175	.094	.028															
6.0	.220	.110	.032	.211	.106	.031	.193	.099	.029	.176	.091	.027	.160	.084	.025															
7.0	.203	.100	.028	.194	.097	.028	.178	.090	.026	.162	.083	.024	.148	.077	.023															
8.0	.188	.092	.026	.180	.089	.025	.165	.082	.024	.151	.076	.022	.137	.070	.021															
9.0	.175	.085	.024	.168	.082	.023	.154	.076	.022	.141	.071	.020	.128	.065	.019															
10.0	.164	.079	.022	.157	.076	.021	.144	.071	.020	.132	.065	.019	.120	.060	.017															

pcc	80%			70%			50%			30%			10%			0
pw	50%	30%	10%	50%	30%	10%	50%	30%	10%	50%	30%	10%	50%	30%	10%	0
pfc	20%			20%			20%			20%			20%			0
RCR	RCR:Room Cavity Ratio						Ceiling Cavity Exitance Coefficients(CCEC)									
0.0	.392	.392	.392	.335	.335	.335	.228	.228	.228	.131	.131	.131	.042	.042	.042	
1.0	.388	.358	.331	.332	.308	.285	.227	.212	.197	.131	.122	.115	.042	.039	.037	
2.0	.382	.336	.297	.327	.289	.257	.224	.200	.179	.129	.116	.105	.041	.038	.034	
3.0	.374	.320	.276	.321	.276	.239	.220	.192	.168	.127	.112	.099	.041	.036	.032	
4.0	.367	.308	.262	.315	.266	.228	.216	.185	.160	.125	.108	.095	.040	.035	.031	
5.0	.359	.298	.253	.309	.258	.220	.213	.180	.155	.123	.106	.092	.040	.034	.030	
6.0	.352	.290	.246	.303	.251	.214	.209	.176	.151	.121	.103	.090	.039	.034	.030	
7.0	.345	.284	.241	.297	.246	.210	.205	.172	.149	.119	.102	.088	.038	.033	.029	
8.0	.338	.278	.237	.291	.241	.207	.202	.169	.146	.117	.100	.087	.038	.033	.029	
9.0	.332	.274	.234	.286	.237	.204	.198	.167	.145	.116	.099	.086	.037	.032	.029	
10.0	.327	.269	.231	.281	.234	.202	.195	.165	.144	.114	.097	.086	.037	.032	.028	

C Range: 0 - 360DEG  
C Interval: 30.0DEG  
Test Speed: HIGH  
Temperature:25.3℃  
Operators:  
Test Date:2025-03-14

γ Range: 0 - 180DEG  
γ Interval: 1.0DEG  
Test System:EVERFINE GO-2000B\_V1 SYSTEM V2.00.488  
Humidity:65.0%  
Test Distance:6.360m [K=1.0000]  
Remarks:

UGR(Unified Glare Rating) Table

Test:U:24.00V I:0.4679A P:11.23W PF:1.000 Freq:0Hz Lamp Flux:290.662x1 lm											
NAME: SF18-24V-5050-70-SPI-RGBW(4000K)-W						TYPE:		WEIGHT:			
SPEC.:						DIM.: Length=1m		SERIAL No.:			
MFR.: OLympia lighting						SUR.:		Shielding Angle:			
ceiling/cavity	0.7	0.7	0.5	0.5	0.3	0.7	0.7	0.5	0.5	0.3	
walls	0.5	0.3	0.5	0.3	0.3	0.5	0.3	0.5	0.3	0.3	
working plane	0.2	0.2	0.2	0.2	0.2	0.2	0.2	0.2	0.2	0.2	
Room dimensions		Viewed crosswise					Viewed endwise				
x = 2H y = 2H	2H	21.7	23.0	22.3	23.6	24.3	18.5	19.8	19.2	20.5	21.2
	3H	24.4	25.6	25.1	26.2	27.0	20.2	21.4	20.8	22.0	22.8
	4H	25.9	27.0	26.5	27.7	28.5	20.9	22.1	21.6	22.7	23.5
	6H	27.5	28.5	28.2	29.2	30.0	21.6	22.6	22.2	23.3	24.1
	8H	28.4	29.4	29.1	30.1	30.9	21.8	22.8	22.5	23.5	24.3
	12H	29.4	30.4	30.1	31.1	31.9	22.0	23.0	22.7	23.7	24.5
4H	2H	22.1	23.3	22.8	23.9	24.7	19.9	21.0	20.6	21.7	22.5
	3H	25.2	26.1	25.9	26.8	27.7	21.8	22.7	22.5	23.4	24.3
	4H	26.8	27.7	27.5	28.4	29.3	22.6	23.5	23.4	24.3	25.1
	6H	28.6	29.4	29.4	30.2	31.1	23.4	24.2	24.2	25.0	25.9
	8H	29.6	30.4	30.4	31.1	32.1	23.7	24.5	24.5	25.3	26.2
	12H	30.8	31.5	31.6	32.3	33.2	24.0	24.7	24.8	25.5	26.4
8H	4H	27.1	27.8	27.8	28.6	29.5	23.8	24.5	24.6	25.3	26.2
	6H	29.2	29.8	30.0	30.6	31.6	24.9	25.5	25.7	26.3	27.3
	8H	30.4	31.0	31.2	31.8	32.8	25.4	26.0	26.2	26.8	27.7
	12H	31.9	32.4	32.7	33.2	34.2	25.8	26.3	26.6	27.1	28.1
12H	4H	27.1	27.8	27.9	28.5	29.5	24.2	24.9	25.0	25.6	26.6
	6H	29.3	29.8	30.1	30.7	31.6	25.5	26.0	26.3	26.8	27.8
	8H	30.6	31.1	31.4	31.9	32.9	26.1	26.6	26.9	27.4	28.4
Variations with the observer position at spacings(CIE Pub.117):											
S = 1.0H		+ 0.1 / - 0.1					+ 0.1 / - 0.1				
1.5H		+ 0.2 / - 0.2					+ 0.2 / - 0.3				
2.0H		+ 0.2 / - 0.3					+ 0.2 / - 0.4				

CIE Pub.117, 290.7 lm Total Lamp Luminous Flux Correct (8log(F/F0) = -4.3)  
Area: 0.0165 m2

C Range: 0 - 360DEG  
C Interval: 30.0DEG  
Test Speed: HIGH  
Temperature:25.3℃  
Operators:  
Test Date:2025-03-14

γ Range: 0 - 180DEG  
γ Interval: 1.0DEG  
Test System:EVERFINE GO-2000B\_V1 SYSTEM V2.00.488  
Humidity:65.0%  
Test Distance:6.360m [K=1.0000]  
Remarks:

## UTILIZATION FACTORS TABLE

Test:U:24.00V I:0.4679A P:11.23W PF:1.000 Freq:0Hz Lamp Flux:290.662x1 lm		
NAME: SF18-24V-5050-70-SPI-RGBW(4000K)-W	TYPE:	WEIGHT:
SPEC.:	DIM.: Length=1m	SERIAL No.:
MFR.: OLympia lighting	SUR.:	Shielding Angle:

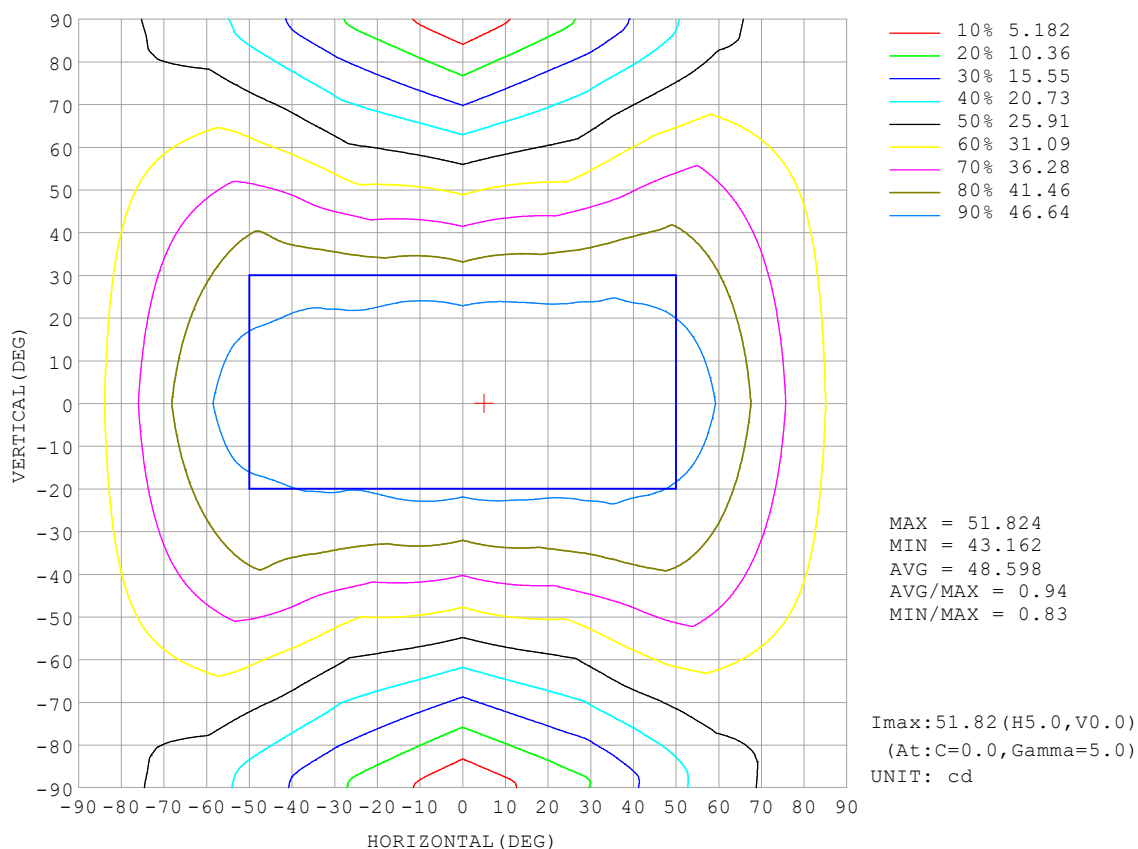
REFLECTANCE										
Ceiling	0.8	0.8	0.8	0.7	0.7	0.7	0.5	0.5	0.5	0
Walls	0.7	0.5	0.3	0.7	0.5	0.3	0.7	0.5	0.3	0
Working plane	0.2	0.2	0.2	0.2	0.2	0.2	0.2	0.2	0.2	0
ROOM INDEX	UTILIZATION FACTORS (PERCENT) $k(RI) \times RCR = 5$									
$k = 0.60$	45	32	25	43	32	25	41	30	24	17
0.80	54	41	32	52	40	32	49	38	31	23
1.00	61	48	40	59	47	39	55	47	37	28
1.25	68	55	47	66	54	46	60	51	43	33
1.50	74	61	52	70	59	51	65	55	48	36
2.00	81	70	61	77	67	59	71	62	56	42
2.50	86	75	67	82	72	65	74	67	60	46
3.00	90	80	72	85	77	70	77	70	65	49
4.00	94	86	79	90	82	76	81	75	70	54
5.00	97	90	84	93	86	81	84	79	74	56
ROOM INDEX	UF (total)									Direct
According to DIN EN 13032-2 2004			Suspended					SHRNOM = 1.25		

C Range: 0 - 360DEG  
 C Interval: 30.0DEG  
 Test Speed: HIGH  
 Temperature: 25.3°C  
 Operators:  
 Test Date: 2025-03-14

γ Range: 0 - 180DEG  
 γ Interval: 1.0DEG  
 Test System: EVERFINE GO-2000B\_V1 SYSTEM V2.00.488  
 Humidity: 65.0%  
 Test Distance: 6.360m [K=1.0000]  
 Remarks:

## ISOCANDELA DIAGRAM

Test:U:24.00V I:0.4679A P:11.23W PF:1.000 Freq:0Hz Lamp Flux:290.662x1 lm		
NAME: SF18-24V-5050-70-SPI-RGBW(4000K)-W	TYPE:	WEIGHT:
SPEC.:	DIM.: Length=1m	SERIAL No.:
MFR.: OLympia lighting	SUR.:	Shielding Angle:



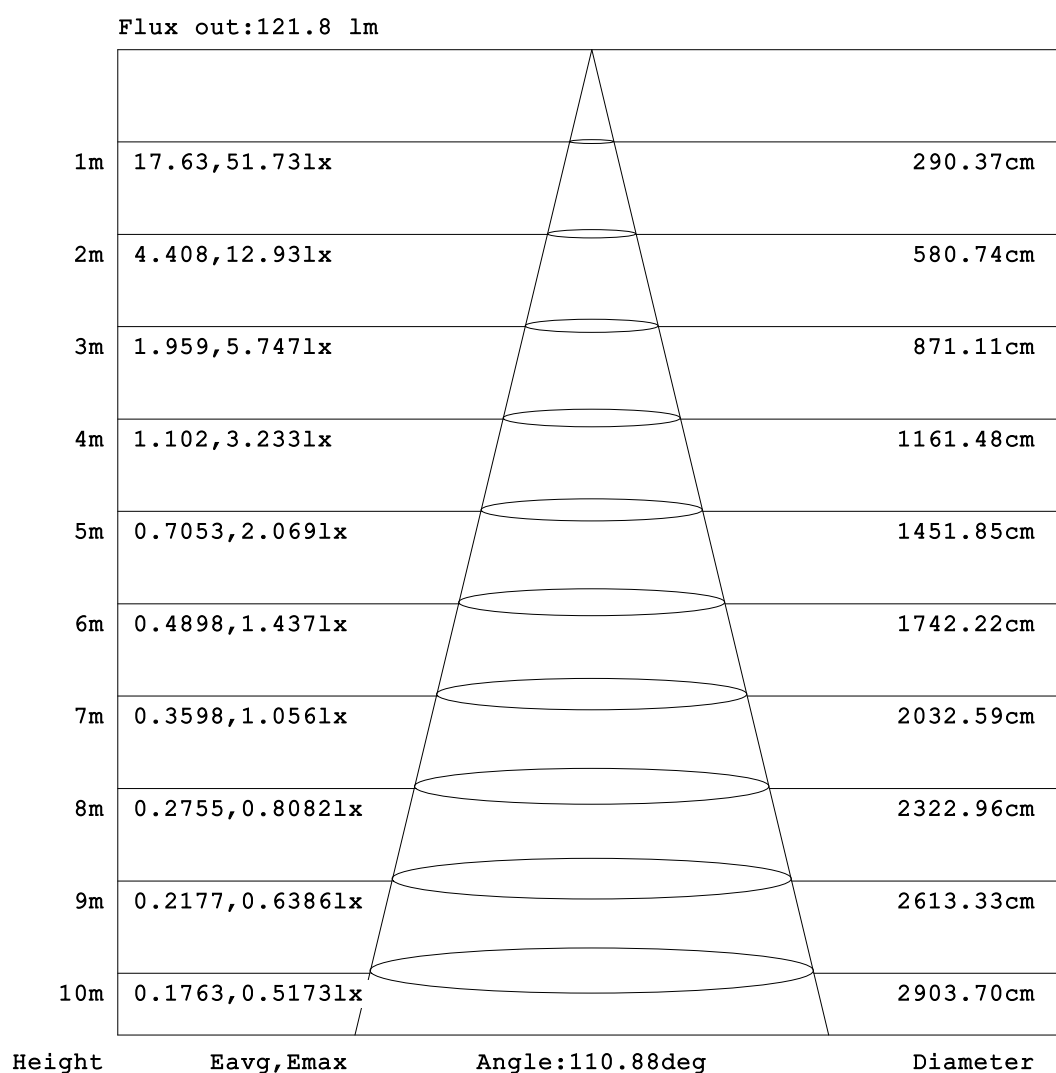
C Range: 0 - 360DEG  
C Interval: 30.0DEG  
Test Speed: HIGH  
Temperature: 25.3°C  
Operators:  
Test Date: 2025-03-14

γ Range: 0 - 180DEG  
γ Interval: 1.0DEG  
Test System: EVERFINE GO-2000B\_V1 SYSTEM V2.00.488  
Humidity: 65.0%  
Test Distance: 6.360m [K=1.0000]  
Remarks:



## AAI Figure

Test:U:24.00V I:0.4679A P:11.23W PF:1.000 Freq:0Hz Lamp Flux:290.662x1 lm		
NAME: SF18-24V-5050-70-SPI-RGBW(4000K)-W	TYPE:	WEIGHT:
SPEC.:	DIM.: Length=1m	SERIAL No.:
MFR.: OLympia lighting	SUR.:	Shielding Angle:



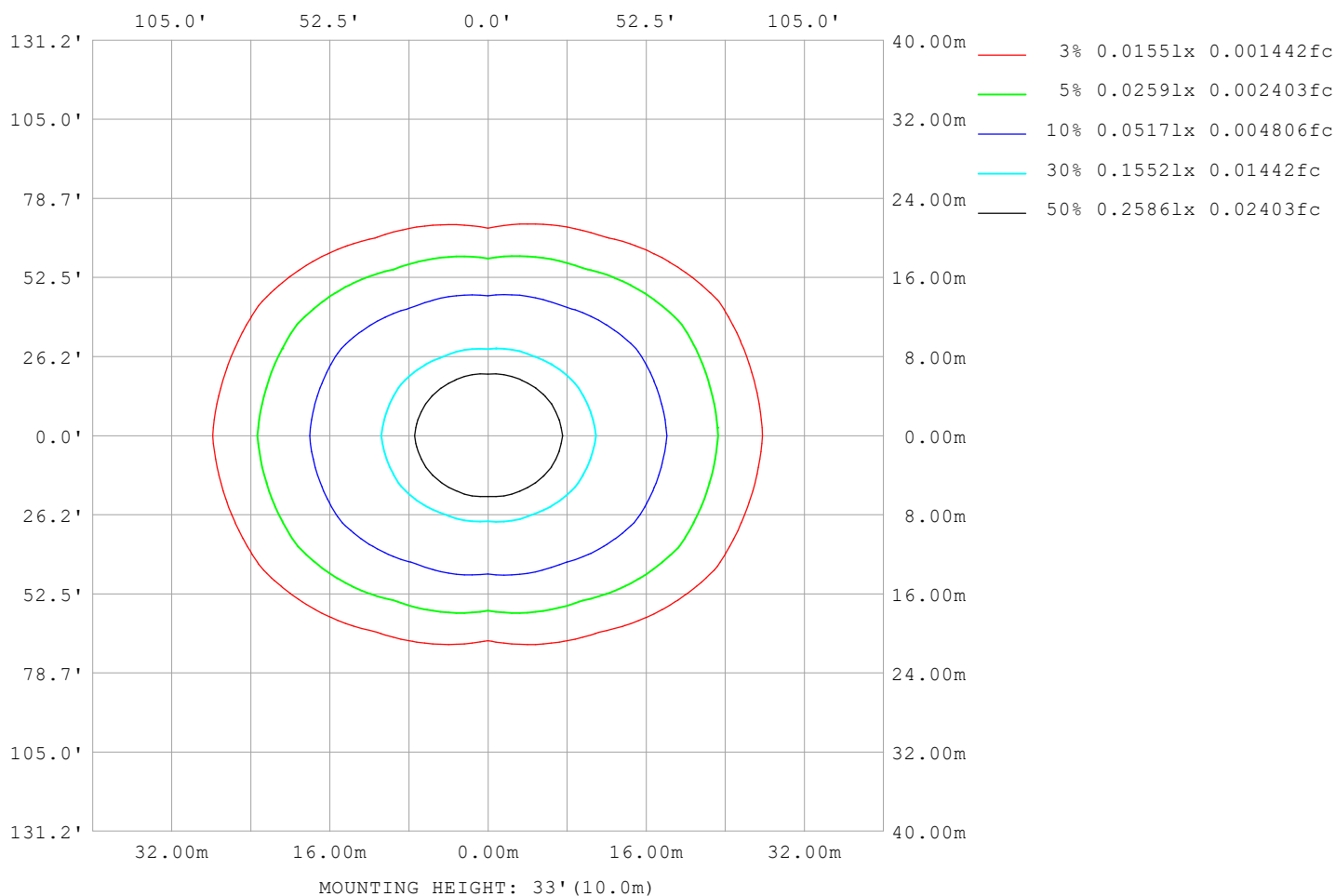
Note:The Curves indicate the illuminated area and the average illumination when the luminaire is at different distance.

C Range: 0 - 360DEG  
C Interval: 30.0DEG  
Test Speed: HIGH  
Temperature:25.3℃  
Operators:  
Test Date:2025-03-14

γ Range: 0 - 180DEG  
γ Interval: 1.0DEG  
Test System:EVERFINE GO-2000B\_V1 SYSTEM V2.00.488  
Humidity:65.0%  
Test Distance:6.360m [K=1.0000]  
Remarks:

## ISOLUX DIAGRAM

Test:U:24.00V I:0.4679A P:11.23W PF:1.000 Freq:0Hz Lamp Flux:290.662x1 lm		
NAME: SF18-24V-5050-70-SPI-RGBW(4000K)-W	TYPE:	WEIGHT:
SPEC.:	DIM.: Length=1m	SERIAL No.:
MFR.: OLympia lighting	SUR.:	Shielding Angle:



C Range: 0 - 360DEG  
C Interval: 30.0DEG  
Test Speed: HIGH  
Temperature:25.3℃  
Operators:  
Test Date:2025-03-14

γ Range: 0 - 180DEG  
γ Interval: 1.0DEG  
Test System:EVERFINE GO-2000B\_V1 SYSTEM V2.00.488  
Humidity:65.0%  
Test Distance:6.360m [K=1.0000]  
Remarks:

## LED Avg.L Report

Test:U:24.00V I:0.4679A P:11.23W PF:1.000 Freq:0Hz Lamp Flux:290.662x1 lm		
NAME: SF18-24V-5050-70-SPI-RGBW(4000K)-W	TYPE:	WEIGHT:
SPEC.:	DIM.: Length=1m	SERIAL No.:
MFR.: OLympia lighting	SUR.:	Shielding Angle:

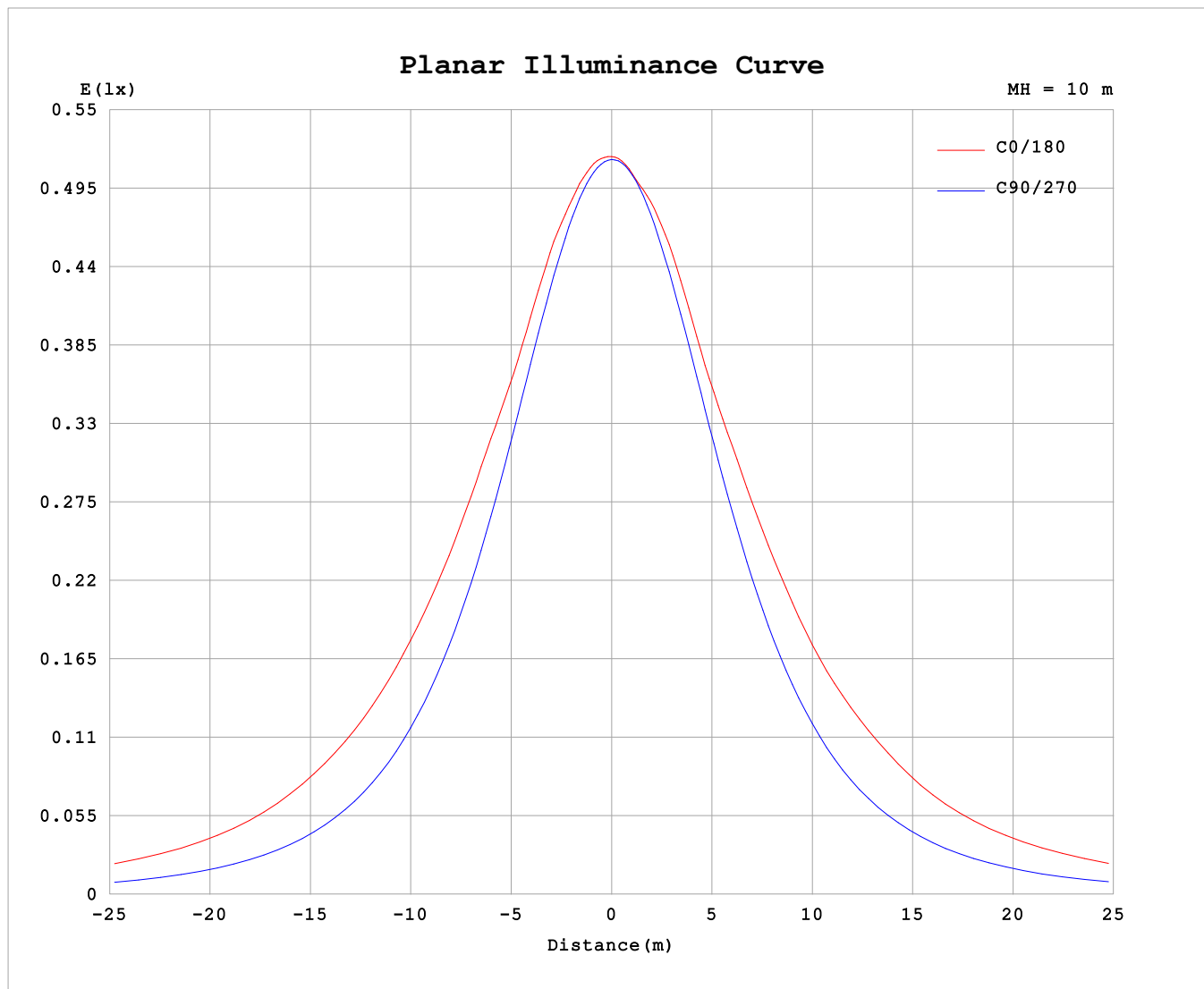
AvgL	cd/m2
L_0~180 (65) av	6165
L_0~180 (75) av	8612
L_0~180 (85) av	21333
L_90~270 (65) av	2691
L_90~270 (75) av	2652
L_90~270 (85) av	2988
L_45 (65) av	4612
L_45 (75) av	6172
L_45 (85) av	13763

Standard: GB/T 29293-2012

C Range: 0 - 360DEG  
C Interval: 30.0DEG  
Test Speed: HIGH  
Temperature:25.3℃  
Operators:  
Test Date:2025-03-14

γ Range: 0 - 180DEG  
γ Interval: 1.0DEG  
Test System:EVERFINE GO-2000B\_V1 SYSTEM V2.00.488  
Humidity:65.0%  
Test Distance:6.360m [K=1.0000]  
Remarks:

## Planar Illuminance Curve



C Range: 0 - 360DEG  
C Interval: 30.0DEG  
Test Speed: HIGH  
Temperature: 25.3 °C  
Operators:  
Test Date: 2025-03-14

$\gamma$  Range: 0 - 180DEG  
 $\gamma$  Interval: 1.0DEG  
Test System: EVERFINE GO-2000B\_V1 SYSTEM V2.00.488  
Humidity: 65.0%  
Test Distance: 6.360m [K=1.0000]  
Remarks:

## LUMINOUS DISTRIBUTION INTENSITY DATA

Test:U:24.00V I:0.4679A P:11.23W PF:1.000 Freq:0Hz Lamp Flux:290.662x1 lm																	
NAME: SF18-24V-5050-70-SPI-RGBW(4000K)-W									TYPE:						WEIGHT:		
SPEC.:									DIM.: Length=1m						SERIAL No.:		
MFR.: OLYMPIA lighting									SUR.:						Shielding Angle:		

Table--1

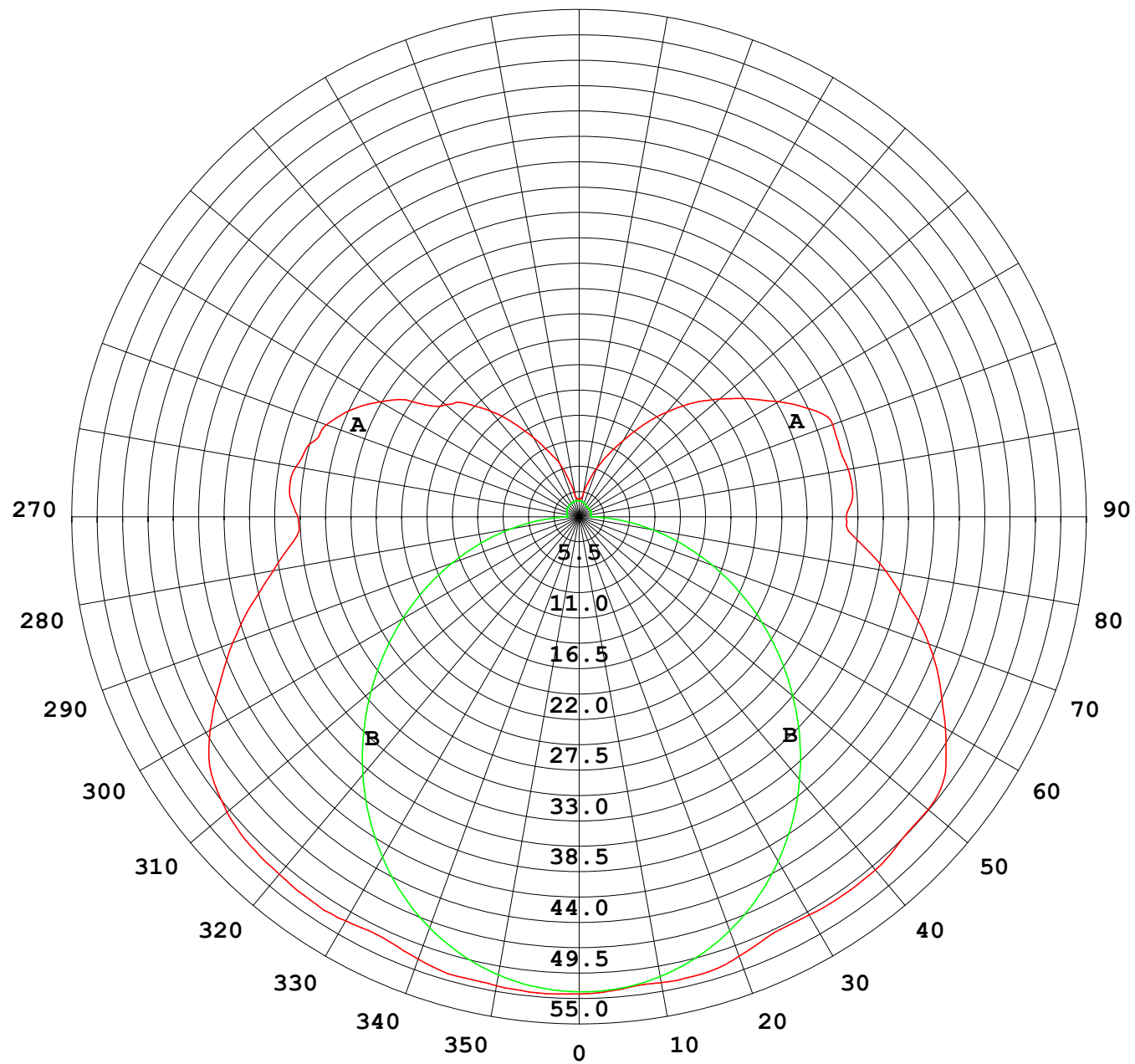
UNIT: cd

C (DEG) γ (DEG)	0	30	60	90	120	150	180	210	240	270	300	330						
0	51.6	51.6	51.6	51.6	51.6	51.6	51.6	51.6	51.6	51.6	51.6	51.6						
5	51.7	51.6	51.5	51.3	51.3	51.3	51.3	51.3	51.3	51.4	51.5	51.7						
10	51.5	51.3	50.9	50.5	50.5	50.8	51.2	50.9	50.7	50.7	51.1	51.4						
15	51.4	50.8	49.9	49.2	49.4	50.7	51.2	50.8	49.6	49.5	50.1	51.0						
20	50.9	50.3	48.4	47.5	48.3	50.1	50.6	50.2	48.6	47.9	48.8	50.5						
25	50.2	49.2	46.9	45.3	47.0	48.7	49.7	48.9	47.4	45.7	47.3	49.5						
30	50.5	48.1	45.1	42.7	45.0	47.6	49.7	47.8	45.5	43.2	45.6	48.4						
35	50.6	47.6	42.8	39.8	42.5	47.1	49.9	47.3	43.1	40.4	43.4	48.0						
40	50.5	46.7	40.2	36.5	39.7	46.2	49.9	46.5	40.3	37.3	40.9	47.1						
45	50.3	45.6	37.3	33.1	36.9	45.3	49.4	45.6	37.5	33.9	38.0	46.1						
50	49.7	44.5	34.3	29.5	33.8	43.8	49.3	44.1	34.5	30.3	35.1	45.0						
55	48.6	42.9	30.8	25.8	30.5	42.4	48.3	42.7	31.2	26.6	31.6	43.6						
60	46.1	40.8	27.7	22.1	27.6	40.8	45.8	41.2	28.2	22.9	28.7	41.8						
65	42.9	38.5	24.9	18.4	24.9	38.2	43.1	38.5	25.5	19.1	26.1	39.6						
70	39.9	35.5	22.1	14.7	22.2	35.1	40.3	35.4	22.7	15.4	23.4	37.0						
75	36.7	31.7	19.1	11.0	19.5	32.1	36.9	32.3	19.9	11.7	20.8	33.4						
80	33.6	28.3	15.7	7.45	16.7	28.5	33.6	28.7	17.0	8.03	17.7	30.0						
85	31.0	25.0	12.6	4.06	13.6	25.1	30.3	25.2	13.8	4.54	14.3	26.7						
90	30.4	24.0	10.5	1.31	11.4	23.0	28.9	22.7	11.1	1.41	11.6	24.8						
95	31.5	25.0	11.1	1.33	11.1	23.8	29.7	23.3	10.8	1.29	11.7	25.4						
100	31.1	25.8	9.58	1.35	10.7	24.9	29.6	24.5	10.5	1.27	10.0	25.7						
105	30.3	24.4	8.63	1.39	10.5	25.3	29.2	25.0	10.2	1.31	9.07	25.2						
110	29.1	22.6	8.26	1.45	10.6	24.2	29.2	24.0	10.3	1.38	8.85	23.6						
115	27.3	20.7	8.75	1.48	10.3	22.0	27.6	21.8	10.1	1.40	8.01	21.8						
120	24.9	17.7	8.29	1.53	9.55	19.9	24.9	19.7	9.39	1.41	7.73	19.4						
125	21.5	16.8	7.17	1.59	8.57	18.1	22.3	17.9	8.42	1.41	6.73	16.7						
130	18.9	15.8	6.33	1.62	7.41	16.1	19.8	16.0	7.24	1.41	6.09	15.6						
135	17.4	12.7	5.36	1.63	6.35	14.1	17.4	14.0	6.18	1.41	5.01	11.8						
140	14.9	9.49	4.46	1.65	5.38	11.9	14.8	11.8	5.23	1.40	4.11	9.49						
145	12.4	7.63	3.81	1.68	4.52	9.55	12.2	9.50	4.36	1.40	3.46	7.09						
150	9.89	6.15	3.15	1.70	3.66	7.63	9.51	7.62	3.50	1.45	2.74	5.34						
155	7.73	4.83	2.58	1.72	3.06	5.99	7.40	6.03	2.93	1.54	2.25	4.49						
160	6.06	3.58	2.26	1.73	2.62	4.49	5.63	4.51	2.53	1.60	2.07	3.22						
165	3.83	2.55	2.03	1.75	2.26	3.19	3.85	3.24	2.20	1.66	1.91	2.21						
170	2.19	2.08	1.94	1.75	2.11	2.38	2.24	2.46	2.07	1.71	1.86	1.97						
175	1.95	1.92	1.87	1.78	2.03	2.07	2.01	2.18	2.02	1.74	1.81	1.85						
180	1.87	1.87	1.81	1.78	1.80	1.78	1.87	1.88	1.82	1.77	1.78	1.77						

C Range: 0 - 360DEG  
C Interval: 30.0DEG  
Test Speed: HIGH  
Temperature:25.3℃  
Operators:  
Test Date:2025-03-14

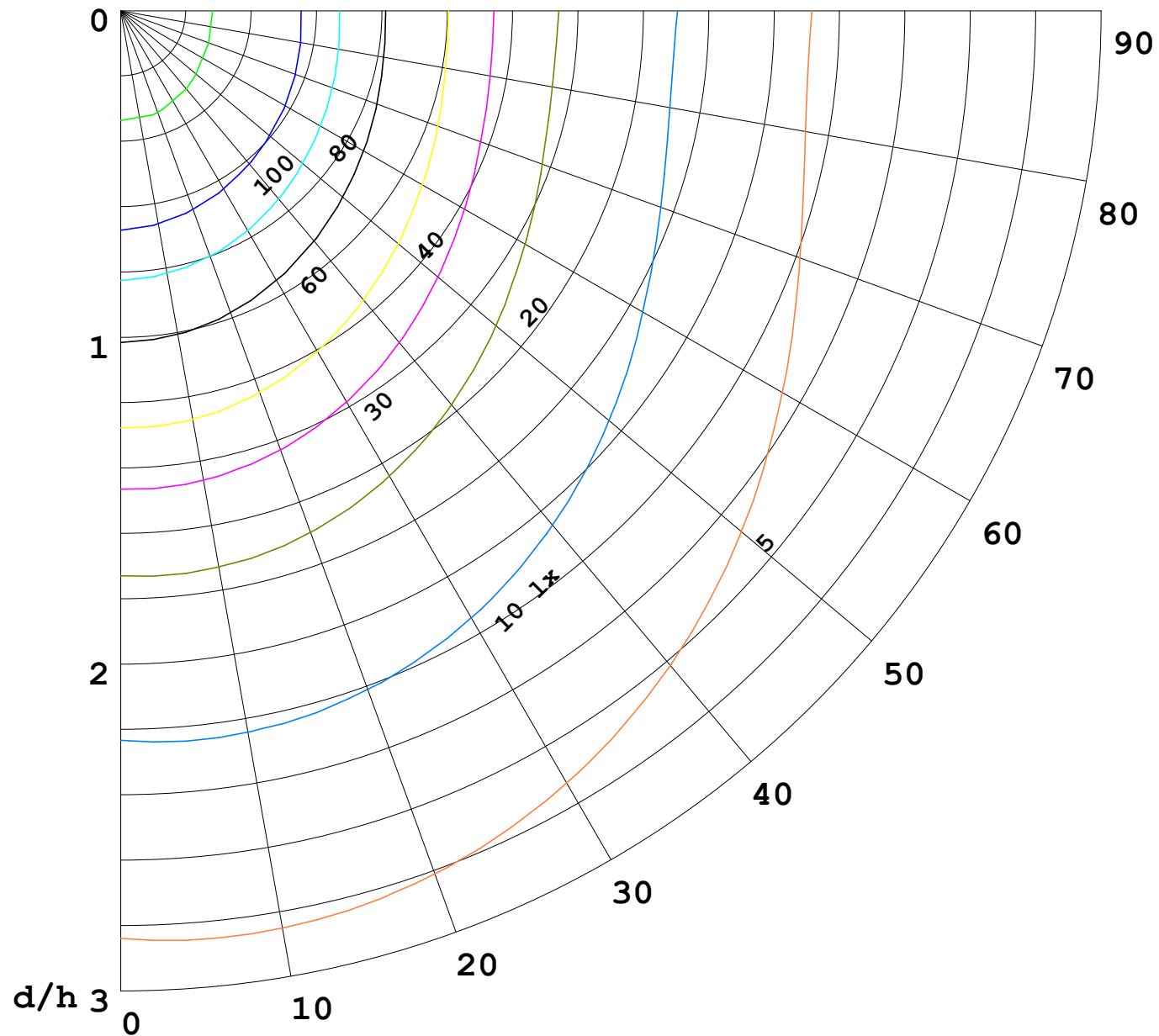
γ Range: 0 - 180DEG  
γ Interval: 1.0DEG  
Test System:EVERFINE GO-2000B\_V1 SYSTEM V2.00.488  
Humidity:65.0%  
Test Distance:6.360m [K=1.0000]  
Remarks:

I (cd)



1000 lm

$\kappa = 1$



F = 1000 lm  
 K = 0.7  
 Hcc = 0.8 m  
 Hfc = 0.0 m  
 Eave = 100 lx

	Pcc	Pw	Pfc
————	70	50	30
————	50	30	20

