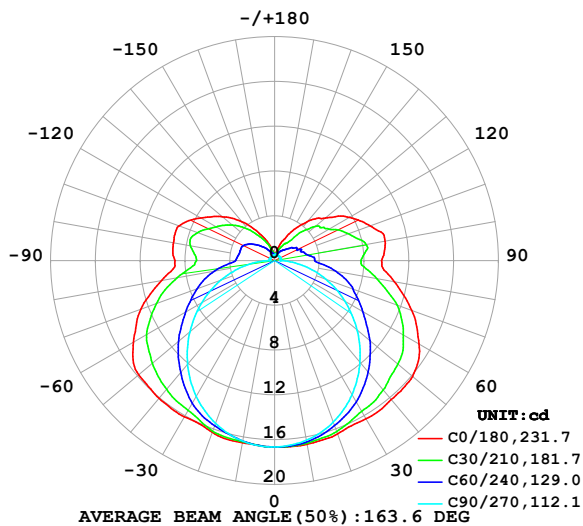


LUMINAIRE PHOTOMETRIC TEST REPORT

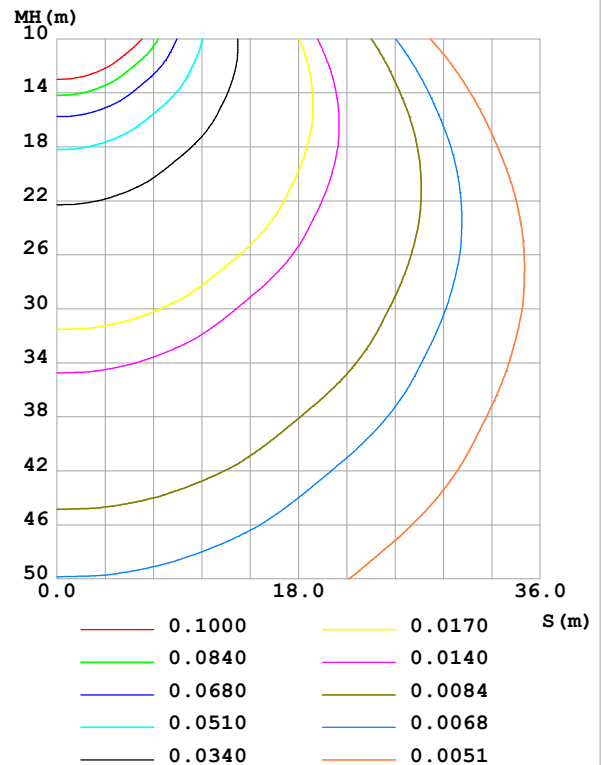
Test:U:24.00V I:0.2373A P:5.695W PF:1.000 Freq:0Hz Lamp Flux:93.0478x1 lm		
NAME: SF18-24V-5050-70-SPI-RGBW(2700K)-R	TYPE:	WEIGHT:
SPEC.:	DIM.: Length=1m	SERIAL No.:
MFR.: Olym pia lighting	SUR.:	Shielding Angle:

DATA OF LAMP		PHOTOMETRIC DATA				Eff: 16.34 lm/W
MODEL	5050	I _{max} (cd)	16.69	S/MH(C0/180)	1.49	
NOMINAL POWER(W)		LOR(%)	100.0	S/MH(C90/270)	1.25	
RATED VOLTAGE(V)	24	TOTAL FLUX(lm)	93.047	η UP,DN(C0-180)	13.0,37.0	
NOMINAL FLUX(lm)	93.0478	CIE CLASS	SEMI-D.	η UP,DN(C180-360)	12.8,37.2	
LAMPS INSIDE	1	η up (%)	25.7	CIBSE SHR NOM	1.50	
TEST VOLTAGE(V)		η down (%)	74.3	CIBSE SHR MAX	1.55	

LUMINOUS INTENSITY DISTRIBUTION DIAGRAM



C0 PLANE ISOLUX DIAGRAM (UNIT:lx)



C Range: 0 - 360DEG
C Interval: 30.0DEG
Test Speed: HIGH
Temperature:25.3℃
Operators:
Test Date:2025-03-15

γ Range: 0 - 180DEG
γ Interval: 1.0DEG
Test System:EVERFINE GO-2000B_V1 SYSTEM V2.00.488
Humidity:65.0%
Test Distance:6.360m [K=1.0000]
Remarks:

ZONAL FLUX DIAGRAM

ZONAL FLUX DIAGRAM:

γ	C0	C45	C90	C135	C180	C225	C270	C315	γ	Φ zone	Φ total	%lum, lamp
10	16.67	16.51	16.30	16.38	16.52	16.40	16.38	16.57	0- 10	1.580	1.580	1.7,1.7
20	16.46	15.97	15.35	15.91	16.33	15.96	15.47	16.06	10- 20	4.596	6.176	6.64,6.64
30	16.32	15.07	13.84	15.00	16.12	15.08	14.02	15.22	20- 30	7.171	13.35	14.3,14.3
40	16.22	14.05	11.86	13.92	16.07	14.04	12.10	14.25	30- 40	9.169	22.52	24.2,24.2
50	16.09	12.77	9.610	12.61	15.87	12.75	9.875	12.98	40- 50	10.40	32.92	35.4,35.4
60	14.90	11.20	7.245	11.05	14.57	11.20	7.516	11.43	50- 60	10.78	43.69	47,47
70	13.02	9.566	4.869	9.238	12.71	9.312	5.085	9.741	60- 70	10.16	53.85	57.9,57.9
80	10.87	7.416	2.545	7.121	10.26	7.155	2.686	7.552	70- 80	8.678	62.53	67.2,67.2
90	9.567	5.668	0.5049	5.372	8.904	5.245	0.4943	5.676	80- 90	6.569	69.10	74.3,74.3
100	10.03	5.675	0.5353	5.613	9.184	5.459	0.4671	5.666	90-100	5.884	74.98	80.6,80.6
110	9.099	4.774	0.5468	5.399	9.102	5.278	0.4903	4.963	100-110	5.581	80.56	86.6,86.6
120	7.734	3.980	0.5512	4.586	7.651	4.482	0.4954	4.157	110-120	4.634	85.20	91.6,91.6
130	5.934	3.265	0.5512	3.690	6.118	3.594	0.4908	3.300	120-130	3.434	88.63	95.3,95.3
140	4.533	1.996	0.5512	2.706	4.548	2.627	0.4729	2.122	130-140	2.271	90.90	97.7,97.7
150	2.939	1.311	0.5512	1.776	2.885	1.712	0.4713	1.254	140-150	1.253	92.15	99,99
160	1.691	0.8326	0.5486	1.119	1.671	1.082	0.4874	0.8368	150-160	0.6027	92.76	99.7,99.7
170	0.6487	0.6103	0.5532	0.7009	0.6708	0.6938	0.5145	0.6034	160-170	0.2317	92.99	99.9,99.9
180	0.5574	0.5586	0.5541	0.5611	0.5602	0.5643	0.5367	0.5553	170-180	0.0578	93.05	100,100
DEG	LUMINOUS INTENSITY:cd									UNIT:lm		

Conical surface Flux(90deg): 27.611 lm

%lum = 29.7%

%lamp = 29.7%

Conical surface Flux(130deg): 48.902 lm

%lum = 52.6%

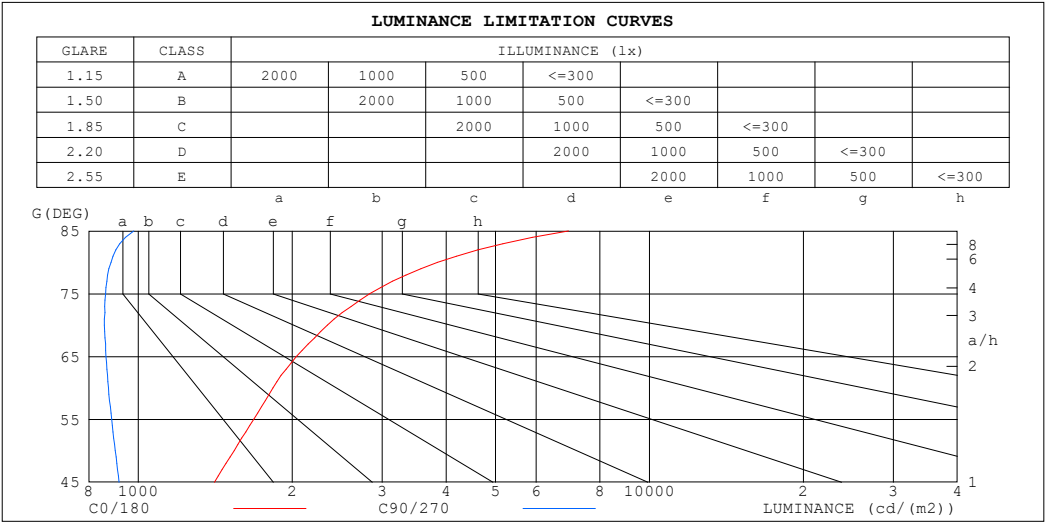
%lamp = 52.6%

C Range: 0 - 360DEG
 C Interval: 30.0DEG
 Test Speed: HIGH
 Temperature:25.3℃
 Operators:
 Test Date:2025-03-15

γ Range: 0 - 180DEG
 γ Interval: 1.0DEG
 Test System:EVERFINE GO-2000B_V1 SYSTEM V2.00.488
 Humidity:65.0%
 Test Distance:6.360m [K=1.0000]
 Remarks:

LUMINANCE LIMITATION CURVES

Test:U:24.00V I:0.2373A P:5.695W PF:1.000 Freq:0Hz Lamp Flux:93.0478x1 lm		
NAME: SF18-24V-5050-70-SPI-RGBW(2700K)-R	TYPE:	WEIGHT:
SPEC.:	DIM.: Length=1m	SERIAL No.:
MFR.: OLYMPIA lighting	SUR.:	Shielding Angle:



LUMINANCE cd/(m2)		
G (DEG)	C0/180	C90/270
85	6942	980
80	3850	884
75	2837	863
70	2342	858
65	2039	864
60	1833	874
55	1682	886
50	1540	901
45	1409	917

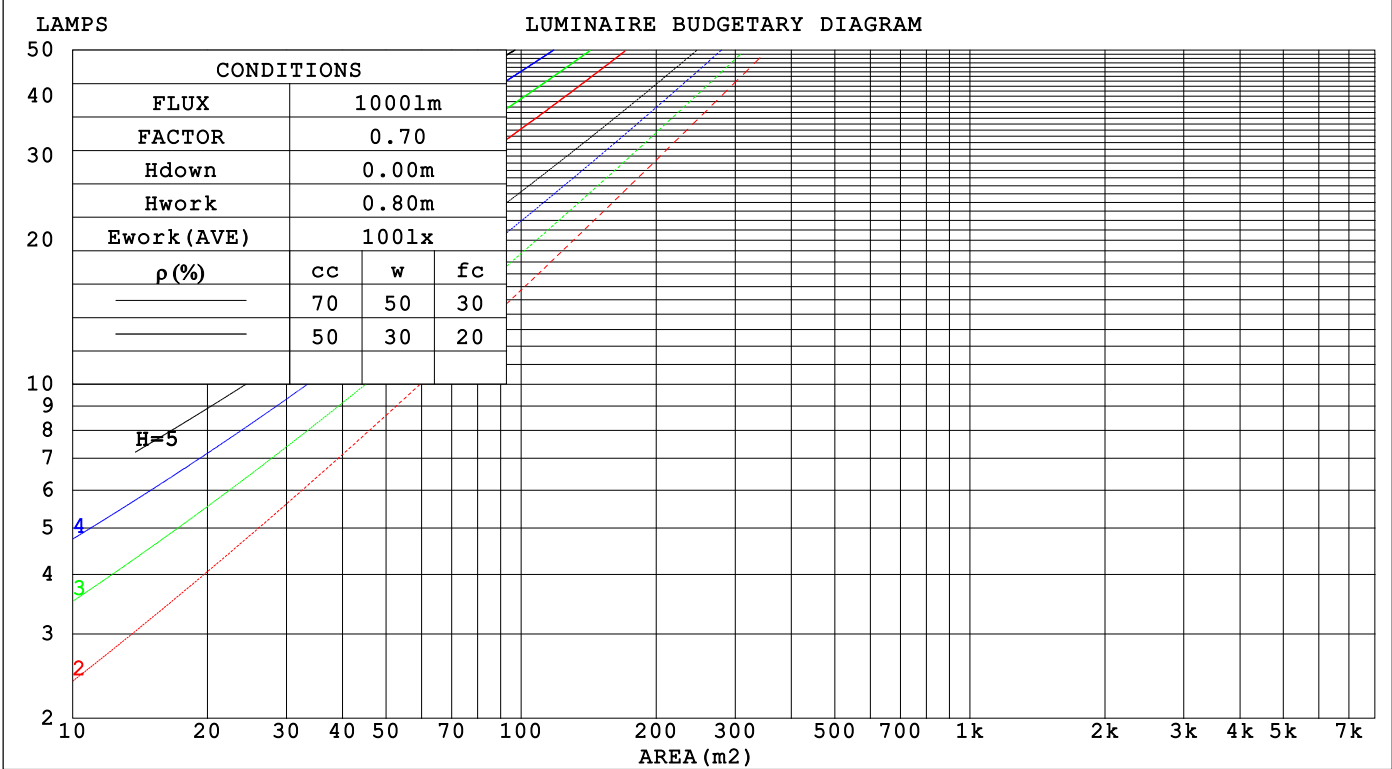
C Range: 0 - 360DEG
C Interval: 30.0DEG
Test Speed: HIGH
Temperature:25.3℃
Operators:
Test Date:2025-03-15

γ Range: 0 - 180DEG
γ Interval: 1.0DEG
Test System:EVERFINE GO-2000B_V1 SYSTEM V2.00.488
Humidity:65.0%
Test Distance:6.360m [K=1.0000]
Remarks:

CU AND LUMINAIRE BUDGETARY ESTIMATE DIAGRAM

Test:U:24.00V I:0.2373A P:5.695W PF:1.000 Freq:0Hz Lamp Flux:93.0478x1 lm		
NAME: SF18-24V-5050-70-SPI-RGBW(2700K)-R	TYPE:	WEIGHT:
SPEC.:	DIM.: Length=1m	SERIAL No.:
MFR.: OLYMPIA lighting	SUR.:	Shielding Angle:

pcc	80%			70%			50%			30%			10%			0
p _w	50%	30%	10%	50%	30%	10%	50%	30%	10%	50%	30%	10%	50%	30%	10%	0
p _{fc}	20%			20%			20%			20%			20%			0
RCR	RCR:Room Cavity Ratio															



C Range: 0 - 360DEG
C Interval: 30.0DEG
Test Speed: HIGH
Temperature:25.3℃
Operators:
Test Date:2025-03-15

γ Range: 0 - 180DEG
γ Interval: 1.0DEG
Test System:EVERFINE GO-2000B_V1 SYSTEM V2.00.488
Humidity:65.0%
Test Distance:6.360m [K=1.0000]
Remarks:

WEC AND CCEC

Test:U:24.00V I:0.2373A P:5.695W PF:1.000 Freq:0Hz Lamp Flux:93.0478x1 lm		
NAME: SF18-24V-5050-70-SPI-RGBW(2700K)-R	TYPE:	WEIGHT:
SPEC.:	DIM.: Length=1m	SERIAL No.:
MFR.: OLympia lighting	SUR.:	Shielding Angle:

pcc	80%			70%			50%			30%			10%			0														
pw	50%	30%	10%	50%	30%	10%	50%	30%	10%	50%	30%	10%	50%	30%	10%	0														
pfc	20%			20%			20%			20%			20%			0														
RCR	RCR:Room Cavity Ratio															Wall Exitance Coefficients(WEC)														
0.0																														
1.0	.382	.217	.069	.367	.209	.067	.339	.194	.062	.313	.181	.058	.289	.168	.054															
2.0	.331	.182	.056	.318	.175	.054	.292	.162	.050	.269	.151	.047	.247	.140	.044															
3.0	.294	.157	.047	.282	.151	.045	.259	.140	.043	.237	.130	.040	.217	.120	.037															
4.0	.265	.138	.040	.254	.133	.039	.233	.123	.037	.213	.114	.034	.195	.106	.032															
5.0	.241	.123	.036	.231	.118	.034	.211	.110	.032	.193	.102	.030	.176	.094	.028															
6.0	.221	.111	.032	.211	.107	.031	.194	.099	.029	.177	.092	.027	.162	.085	.025															
7.0	.203	.101	.028	.195	.097	.028	.179	.090	.026	.163	.084	.024	.149	.077	.023															
8.0	.189	.092	.026	.181	.089	.025	.166	.083	.024	.152	.077	.022	.138	.071	.021															
9.0	.176	.085	.024	.168	.082	.023	.154	.076	.022	.141	.071	.020	.129	.066	.019															
10.0	.164	.079	.022	.158	.076	.021	.145	.071	.020	.133	.066	.019	.121	.061	.017															

pcc	80%			70%			50%			30%			10%			0
pw	50%	30%	10%	50%	30%	10%	50%	30%	10%	50%	30%	10%	50%	30%	10%	0
pfc	20%			20%			20%			20%			20%			0
RCR	RCR:Room Cavity Ratio						Ceiling Cavity Exitance Coefficients (CCEC)									
0.0	.387	.387	.387	.330	.330	.330	.226	.226	.226	.130	.130	.130	.041	.041	.041	
1.0	.383	.353	.326	.328	.303	.281	.224	.209	.194	.129	.121	.113	.041	.039	.037	
2.0	.377	.331	.292	.323	.285	.253	.221	.197	.176	.127	.115	.103	.041	.037	.034	
3.0	.369	.315	.271	.317	.271	.235	.217	.189	.165	.126	.110	.097	.040	.036	.032	
4.0	.362	.302	.257	.310	.261	.223	.213	.182	.157	.123	.107	.093	.040	.035	.031	
5.0	.354	.293	.247	.304	.253	.215	.210	.177	.152	.121	.104	.090	.039	.034	.030	
6.0	.347	.285	.240	.298	.247	.209	.206	.173	.148	.119	.102	.088	.039	.033	.029	
7.0	.340	.278	.235	.292	.241	.205	.202	.169	.145	.117	.100	.087	.038	.033	.029	
8.0	.333	.273	.232	.287	.237	.202	.199	.166	.143	.116	.098	.085	.037	.032	.028	
9.0	.327	.268	.229	.282	.233	.199	.195	.164	.142	.114	.097	.084	.037	.032	.028	
10.0	.321	.264	.226	.277	.229	.197	.192	.161	.140	.112	.095	.084	.036	.031	.028	

C Range: 0 - 360DEG
C Interval: 30.0DEG
Test Speed: HIGH
Temperature:25.3℃
Operators:
Test Date:2025-03-15

γ Range: 0 - 180DEG
γ Interval: 1.0DEG
Test System:EVERFINE GO-2000B_V1 SYSTEM V2.00.488
Humidity:65.0%
Test Distance:6.360m [K=1.0000]
Remarks:

UGR(Unified Glare Rating) Table

Test:U:24.00V I:0.2373A P:5.695W PF:1.000 Freq:0Hz Lamp Flux:93.0478x1 lm										
NAME: SF18-24V-5050-70-SPI-RGBW(2700K)-R					TYPE:			WEIGHT:		
SPEC.:					DIM.: Length=1m			SERIAL No.:		
MFR.: OLympia lighting					SUR.:			Shielding Angle:		
ceiling/cavity	0.7	0.7	0.5	0.5	0.3	0.7	0.7	0.5	0.5	0.3
walls	0.5	0.3	0.5	0.3	0.3	0.5	0.3	0.5	0.3	0.3
working plane	0.2	0.2	0.2	0.2	0.2	0.2	0.2	0.2	0.2	0.2
Room dimensions	Viewed crosswise					Viewed endwise				
x = 2H y = 2H	21.8	23.1	22.4	23.8	24.5	18.7	20.0	19.3	20.6	21.3
3H	24.6	25.8	25.3	26.5	27.2	20.4	21.6	21.0	22.2	23.0
4H	26.1	27.2	26.7	27.9	28.7	21.2	22.3	21.9	23.0	23.8
6H	27.7	28.7	28.4	29.4	30.2	21.9	22.9	22.5	23.6	24.4
8H	28.6	29.6	29.2	30.3	31.1	22.1	23.1	22.8	23.8	24.6
12H	29.6	30.6	30.3	31.3	32.1	22.3	23.3	23.0	24.0	24.8
4H 2H	22.3	23.4	23.0	24.1	24.9	20.1	21.2	20.7	21.9	22.6
3H	25.4	26.4	26.1	27.1	27.9	22.0	23.0	22.7	23.7	24.5
4H	27.0	27.9	27.7	28.7	29.5	23.0	23.9	23.7	24.6	25.4
6H	28.8	29.6	29.6	30.4	31.3	23.8	24.6	24.5	25.3	26.2
8H	29.8	30.6	30.6	31.3	32.2	24.1	24.9	24.9	25.6	26.6
12H	31.0	31.7	31.7	32.4	33.4	24.4	25.1	25.2	25.9	26.8
8H 4H	27.3	28.1	28.1	28.8	29.7	24.1	24.9	24.9	25.6	26.5
6H	29.4	30.1	30.2	30.8	31.8	25.3	25.9	26.1	26.7	27.7
8H	30.6	31.2	31.4	32.0	33.0	25.8	26.4	26.6	27.2	28.2
12H	32.0	32.5	32.8	33.3	34.3	26.3	26.8	27.1	27.6	28.6
12H 4H	27.3	28.0	28.1	28.8	29.7	24.5	25.2	25.3	26.0	26.9
6H	29.5	30.1	30.3	30.9	31.8	25.9	26.4	26.7	27.2	28.2
8H	30.8	31.3	31.7	32.2	33.1	26.6	27.1	27.4	27.9	28.9
Variations with the observer position at spacings(CIE Pub.117):										
S = 1.0H	+ 0.1 / - 0.1					+ 0.1 / - 0.1				
1.5H	+ 0.2 / - 0.2					+ 0.2 / - 0.3				
2.0H	+ 0.2 / - 0.3					+ 0.2 / - 0.4				

CIE Pub.117, 93.05 lm Total Lamp Luminous Flux Correct (8log(F/F0) = -8.3)
Area: 0.0165 m2

C Range: 0 - 360DEG
C Interval: 30.0DEG
Test Speed: HIGH
Temperature:25.3℃
Operators:
Test Date:2025-03-15

γ Range: 0 - 180DEG
γ Interval: 1.0DEG
Test System:EVERFINE GO-2000B_V1 SYSTEM V2.00.488
Humidity:65.0%
Test Distance:6.360m [K=1.0000]
Remarks:

UTILIZATION FACTORS TABLE

Test:U:24.00V I:0.2373A P:5.695W PF:1.000 Freq:0Hz Lamp Flux:93.0478x1 lm		
NAME: SF18-24V-5050-70-SPI-RGBW(2700K)-R	TYPE:	WEIGHT:
SPEC.:	DIM.: Length=1m	SERIAL No.:
MFR.: OLympia lighting	SUR.:	Shielding Angle:

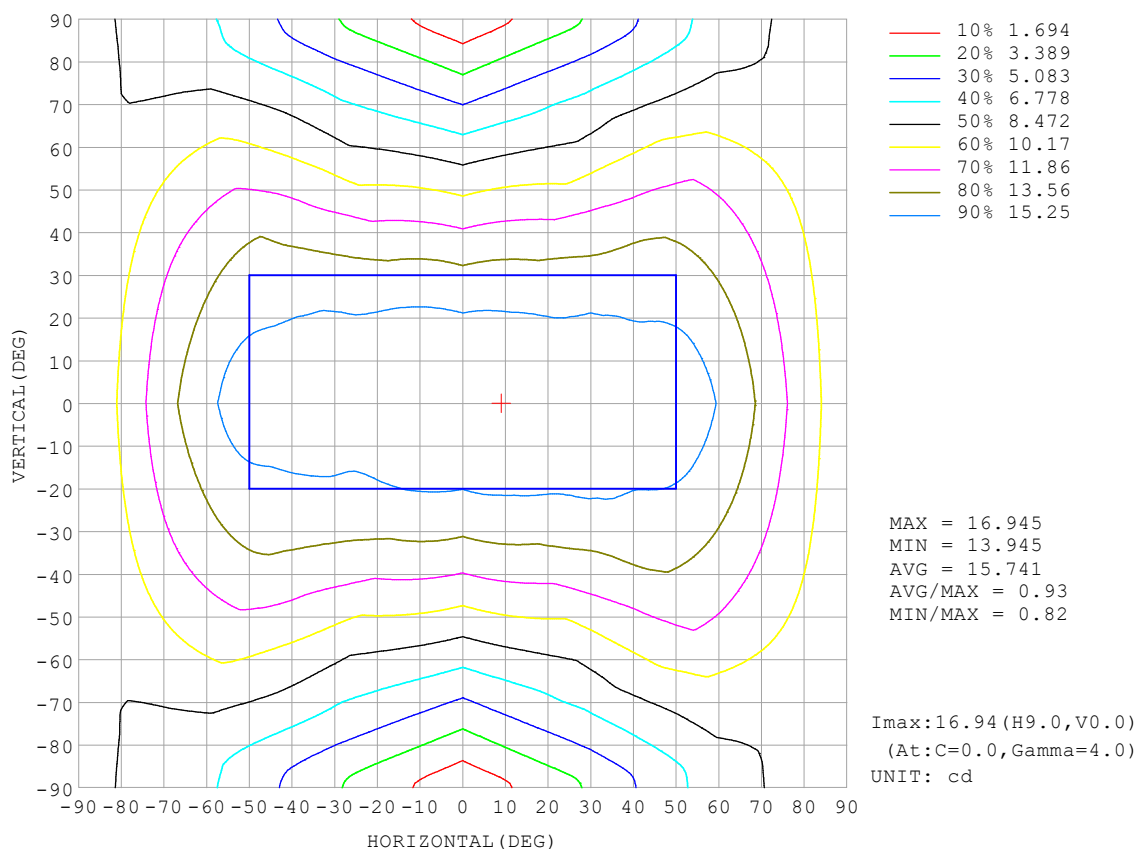
REFLECTANCE										
Ceiling	0.8	0.8	0.8	0.7	0.7	0.7	0.5	0.5	0.5	0
Walls	0.7	0.5	0.3	0.7	0.5	0.3	0.7	0.5	0.3	0
Working plane	0.2	0.2	0.2	0.2	0.2	0.2	0.2	0.2	0.2	0
ROOM INDEX	UTILIZATION FACTORS (PERCENT) $k(RI) \times RCR = 5$									
$k = 0.60$	45	32	25	44	32	25	41	31	24	17
0.80	54	41	33	52	40	32	49	38	31	23
1.00	62	48	40	59	47	39	55	47	38	28
1.25	69	56	47	66	54	46	61	51	44	33
1.50	74	61	52	71	59	51	65	55	48	37
2.00	81	70	61	78	67	59	71	63	56	43
2.50	86	75	67	82	72	65	75	67	61	46
3.00	90	80	72	86	77	70	78	71	65	50
4.00	95	86	80	90	83	77	82	76	71	54
5.00	98	91	85	93	87	81	84	79	75	57
ROOM INDEX	UF (total)									Direct
According to DIN EN 13032-2 2004			Suspended					SHRNOM = 1.25		

C Range: 0 - 360DEG
 C Interval: 30.0DEG
 Test Speed: HIGH
 Temperature: 25.3 °C
 Operators:
 Test Date: 2025-03-15

γ Range: 0 - 180DEG
 γ Interval: 1.0DEG
 Test System: EVERFINE GO-2000B_V1 SYSTEM V2.00.488
 Humidity: 65.0%
 Test Distance: 6.360m [K=1.0000]
 Remarks:

ISOCANDELA DIAGRAM

Test:U:24.00V I:0.2373A P:5.695W PF:1.000 Freq:0Hz Lamp Flux:93.0478x1 lm		
NAME: SF18-24V-5050-70-SPI-RGBW(2700K)-R	TYPE:	WEIGHT:
SPEC.:	DIM.: Length=1m	SERIAL No.:
MFR.: OLympia lighting	SUR.:	Shielding Angle:

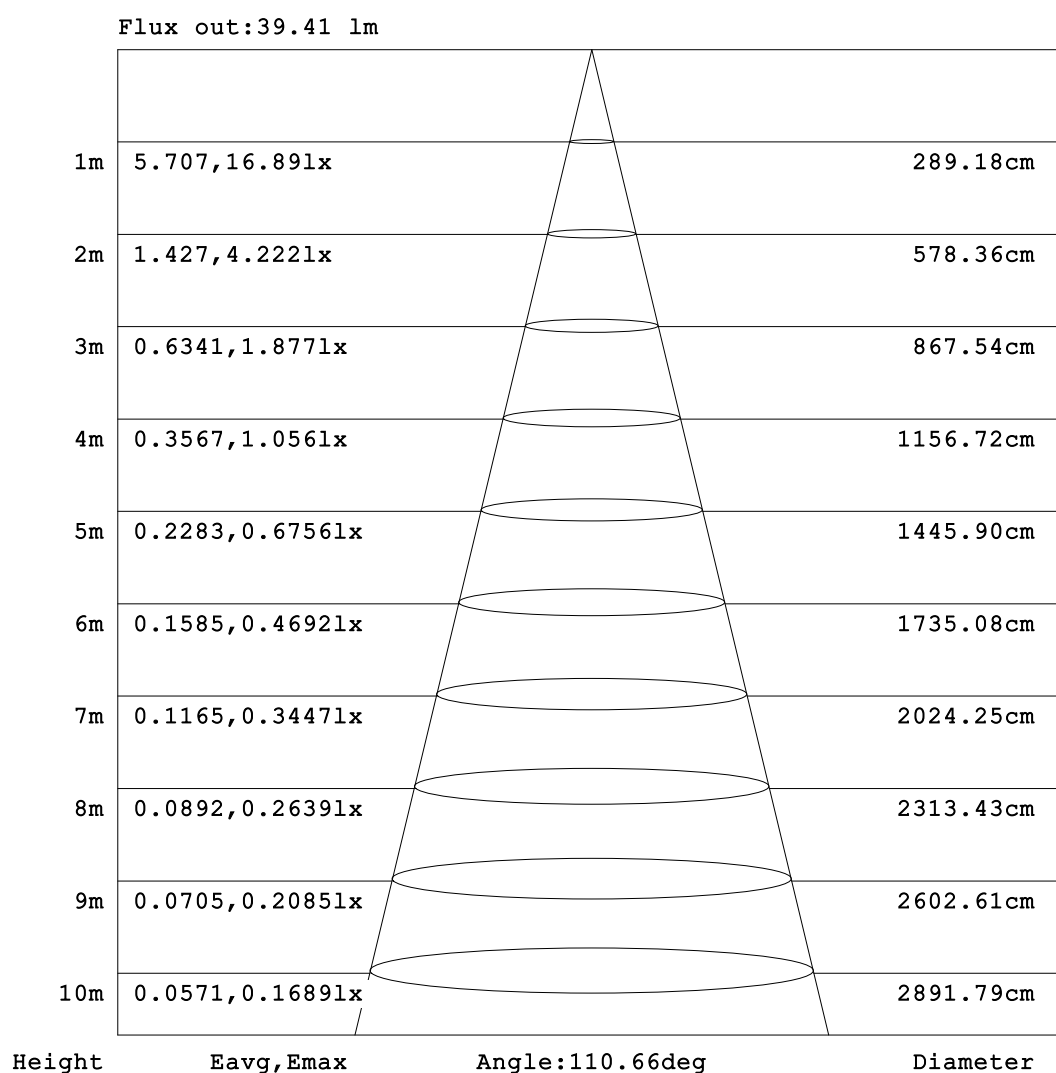


C Range: 0 - 360DEG
C Interval: 30.0DEG
Test Speed: HIGH
Temperature:25.3℃
Operators:
Test Date:2025-03-15

γ Range: 0 - 180DEG
γ Interval: 1.0DEG
Test System:EVERFINE GO-2000B_V1 SYSTEM V2.00.488
Humidity:65.0%
Test Distance:6.360m [K=1.0000]
Remarks:

AAI Figure

Test:U:24.00V I:0.2373A P:5.695W PF:1.000 Freq:0Hz Lamp Flux:93.0478lx1 lm		
NAME: SF18-24V-5050-70-SPI-RGBW(2700K)-R	TYPE:	WEIGHT:
SPEC.:	DIM.: Length=1m	SERIAL No.:
MFR.: OLympia lighting	SUR.:	Shielding Angle:



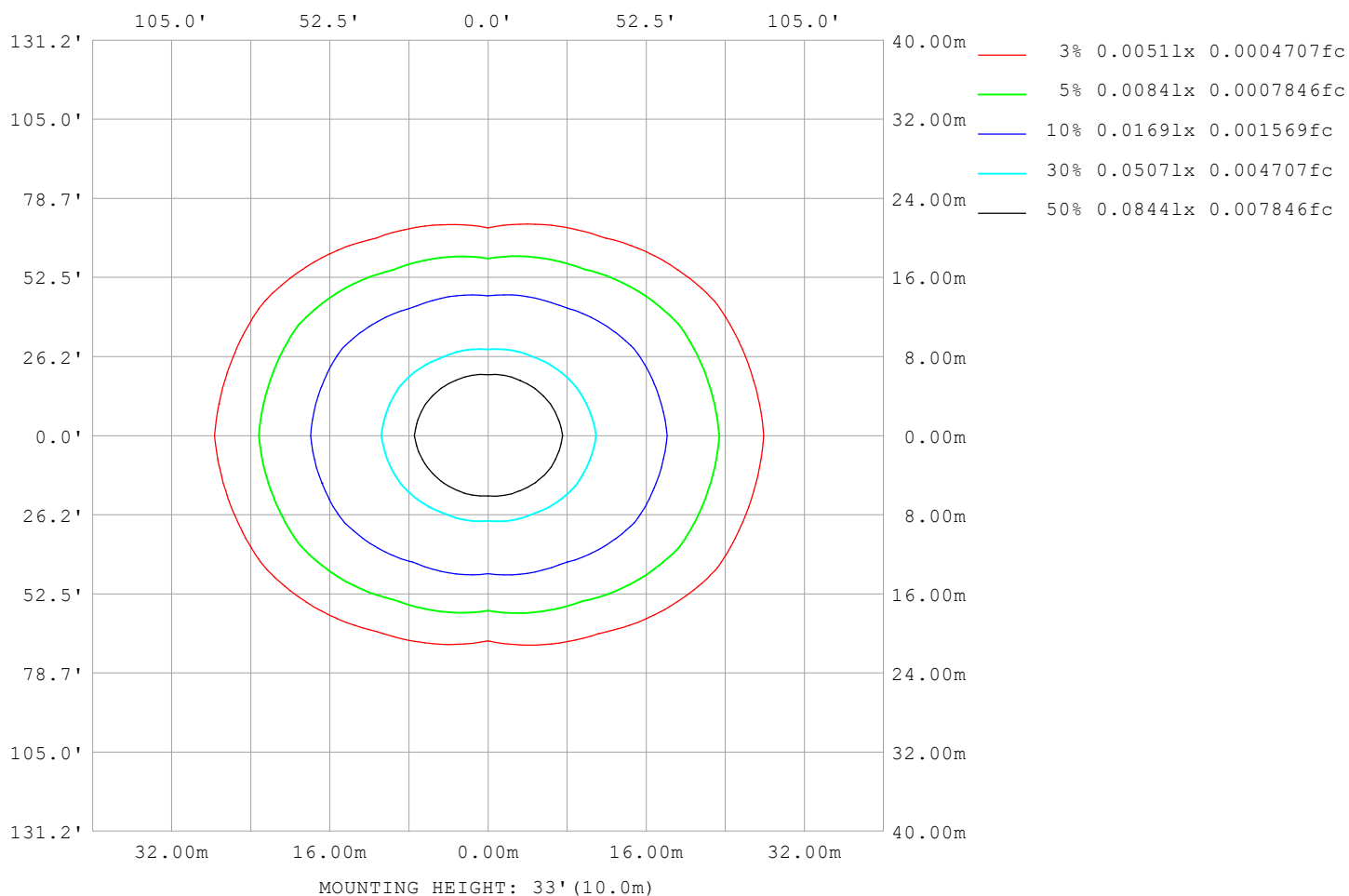
Note:The Curves indicate the illuminated area and the average illumination when the luminaire is at different distance.

C Range: 0 - 360DEG
C Interval: 30.0DEG
Test Speed: HIGH
Temperature:25.3℃
Operators:
Test Date:2025-03-15

γ Range: 0 - 180DEG
γ Interval: 1.0DEG
Test System:EVERFINE GO-2000B_V1 SYSTEM V2.00.488
Humidity:65.0%
Test Distance:6.360m [K=1.0000]
Remarks:

ISOLUX DIAGRAM

Test:U:24.00V I:0.2373A P:5.695W PF:1.000 Freq:0Hz Lamp Flux:93.0478x1 lm		
NAME: SF18-24V-5050-70-SPI-RGBW(2700K)-R	TYPE:	WEIGHT:
SPEC.:	DIM.: Length=1m	SERIAL No.:
MFR.: OLympia lighting	SUR.:	Shielding Angle:



C Range: 0 - 360DEG
C Interval: 30.0DEG
Test Speed: HIGH
Temperature:25.3℃
Operators:
Test Date:2025-03-15

γ Range: 0 - 180DEG
γ Interval: 1.0DEG
Test System:EVERFINE GO-2000B_V1 SYSTEM V2.00.488
Humidity:65.0%
Test Distance:6.360m [K=1.0000]
Remarks:

LED Avg.L Report

Test:U:24.00V I:0.2373A P:5.695W PF:1.000 Freq:0Hz Lamp Flux:93.0478x1 lm		
NAME: SF18-24V-5050-70-SPI-RGBW(2700K)-R	TYPE:	WEIGHT:
SPEC.:	DIM.: Length=1m	SERIAL No.:
MFR.: OLympia lighting	SUR.:	Shielding Angle:

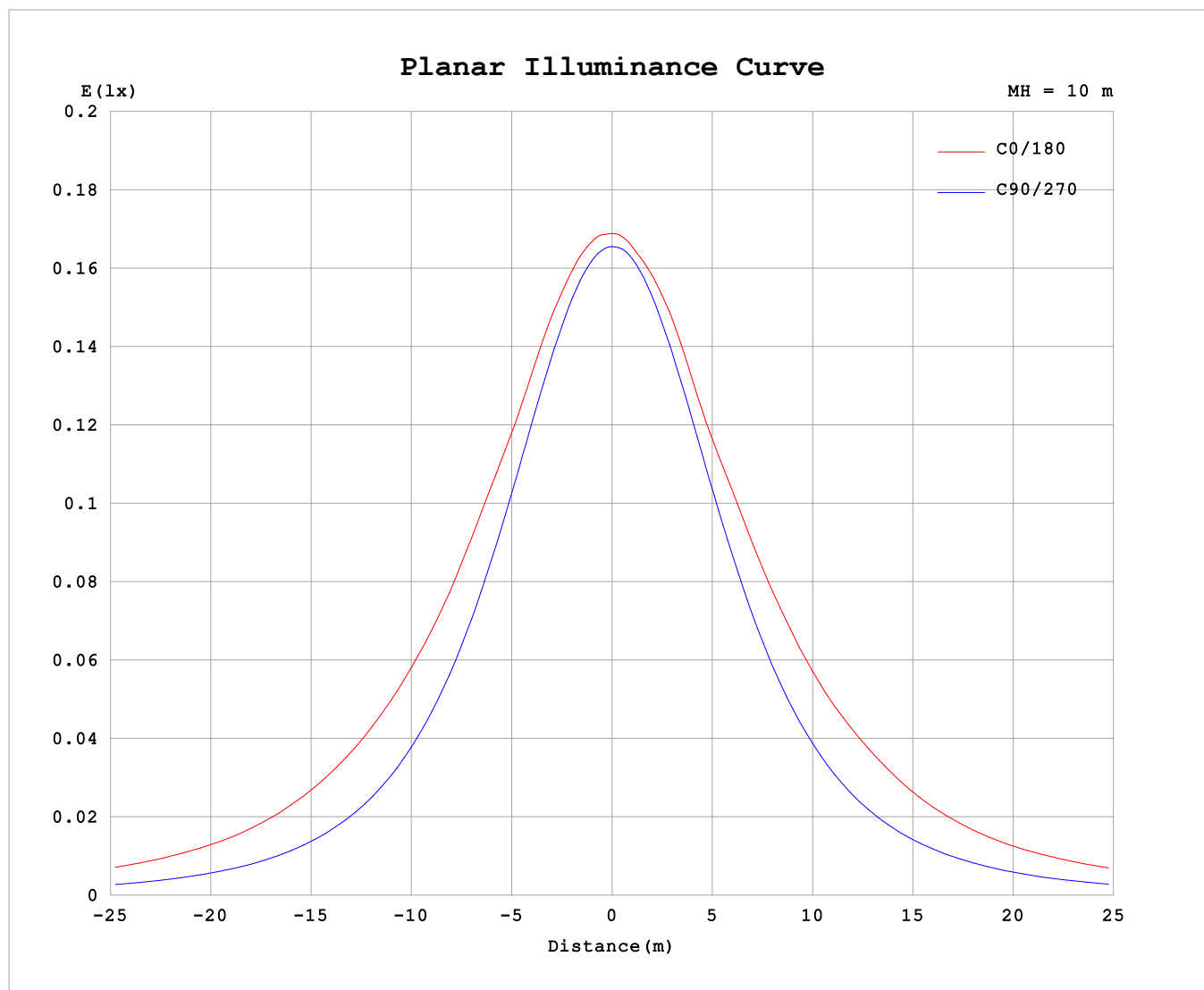
AvgL	cd/m2
L_0~180 (65) av	1983
L_0~180 (75) av	2743
L_0~180 (85) av	6598
L_90~270 (65) av	886
L_90~270 (75) av	887
L_90~270 (85) av	1022
L_45 (65) av	1490
L_45 (75) av	1995
L_45 (85) av	4340

Standard: GB/T 29293-2012

C Range: 0 - 360DEG
C Interval: 30.0DEG
Test Speed: HIGH
Temperature:25.3℃
Operators:
Test Date:2025-03-15

γ Range: 0 - 180DEG
γ Interval: 1.0DEG
Test System:EVERFINE GO-2000B_V1 SYSTEM V2.00.488
Humidity:65.0%
Test Distance:6.360m [K=1.0000]
Remarks:

Planar Illuminance Curve



C Range: 0 - 360DEG
C Interval: 30.0DEG
Test Speed: HIGH
Temperature: 25.3°C
Operators:
Test Date: 2025-03-15

γ Range: 0 - 180DEG
 γ Interval: 1.0DEG
Test System: EVERFINE GO-2000B_V1 SYSTEM V2.00.488
Humidity: 65.0%
Test Distance: 6.360m [K=1.0000]
Remarks:

LUMINOUS DISTRIBUTION INTENSITY DATA

Test:U:24.00V I:0.2373A P:5.695W PF:1.000 Freq:0Hz Lamp Flux:93.0478x1 lm		
NAME: SF18-24V-5050-70-SPI-RGBW(2700K)-R	TYPE:	WEIGHT:
SPEC.:	DIM.: Length=1m	SERIAL No.:
MFR.: OLYMPIA lighting	SUR.:	Shielding Angle:

Table--1

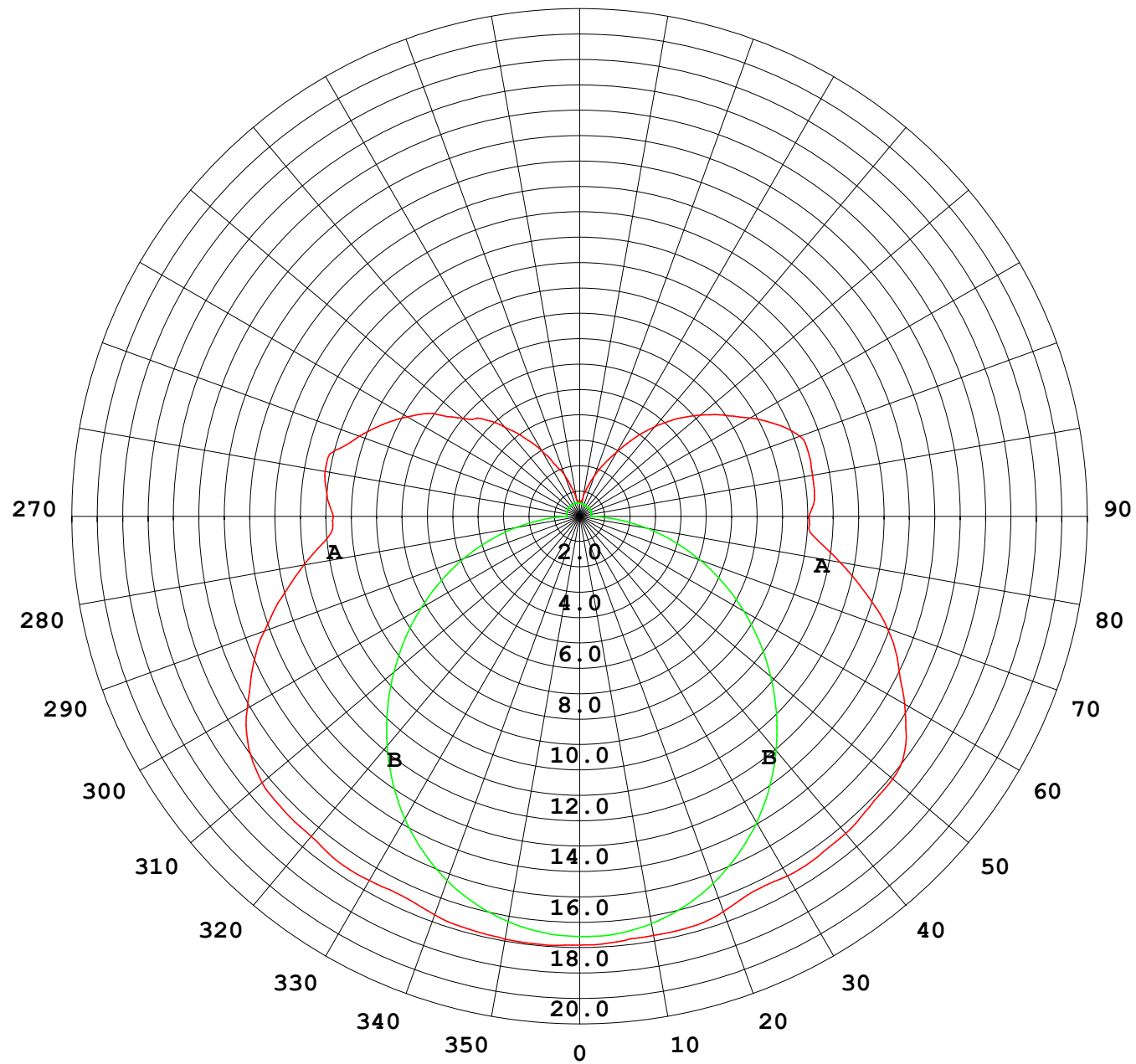
UNIT: cd

C (DEG) γ (DEG)	0	30	60	90	120	150	180	210	240	270	300	330						
0	16.6	16.6	16.6	16.6	16.6	16.6	16.6	16.6	16.6	16.6	16.6	16.6						
5	16.7	16.7	16.6	16.5	16.6	16.6	16.6	16.6	16.6	16.6	16.6	16.7						
10	16.7	16.6	16.5	16.3	16.3	16.4	16.5	16.4	16.4	16.4	16.5	16.7						
15	16.6	16.4	16.1	15.9	16.0	16.4	16.5	16.4	16.0	16.0	16.2	16.5						
20	16.5	16.2	15.7	15.3	15.6	16.2	16.3	16.2	15.7	15.5	15.8	16.3						
25	16.3	15.9	15.2	14.7	15.2	15.7	16.1	15.8	15.3	14.8	15.3	16.0						
30	16.3	15.6	14.6	13.8	14.6	15.4	16.1	15.4	14.7	14.0	14.7	15.7						
35	16.4	15.4	13.8	12.9	13.8	15.3	16.1	15.3	13.9	13.1	14.0	15.6						
40	16.2	15.1	13.0	11.9	12.9	15.0	16.1	15.0	13.1	12.1	13.2	15.3						
45	16.2	14.7	12.1	10.8	12.0	14.6	15.9	14.7	12.2	11.0	12.3	14.8						
50	16.1	14.4	11.1	9.61	11.0	14.2	15.9	14.3	11.2	9.88	11.4	14.6						
55	15.7	14.0	10.0	8.43	9.96	13.7	15.5	13.8	10.2	8.71	10.3	14.2						
60	14.9	13.3	9.10	7.25	9.00	13.1	14.6	13.2	9.18	7.52	9.38	13.5						
65	14.0	12.5	8.23	6.06	8.11	12.2	13.6	12.3	8.25	6.31	8.48	12.7						
70	13.0	11.7	7.46	4.87	7.27	11.2	12.7	11.2	7.39	5.08	7.69	11.8						
75	11.9	10.4	6.60	3.70	6.40	10.1	11.5	10.1	6.49	3.87	6.81	10.5						
80	10.9	9.27	5.54	2.55	5.41	8.84	10.3	8.82	5.47	2.69	5.73	9.38						
85	9.84	8.20	4.43	1.42	4.29	7.63	9.14	7.56	4.33	1.52	4.58	8.25						
90	9.57	7.72	3.60	0.50	3.60	7.15	8.90	6.99	3.49	0.49	3.68	7.68						
95	9.85	8.10	3.56	0.53	3.49	7.44	9.15	7.20	3.36	0.46	3.60	8.03						
100	10.0	8.31	3.01	0.54	3.38	7.85	9.18	7.65	3.25	0.47	3.09	8.25						
105	9.86	7.63	2.76	0.54	3.33	7.91	9.22	7.77	3.22	0.49	2.86	7.85						
110	9.10	7.04	2.49	0.55	3.34	7.47	9.10	7.33	3.20	0.49	2.63	7.30						
115	8.44	6.42	2.22	0.55	3.28	6.81	8.46	6.69	3.15	0.50	2.67	6.71						
120	7.73	5.64	2.31	0.55	3.02	6.15	7.65	6.05	2.90	0.50	2.44	5.88						
125	6.97	5.15	1.99	0.55	2.71	5.60	6.86	5.52	2.60	0.49	1.91	5.13						
130	5.93	4.79	1.73	0.55	2.36	5.03	6.12	4.94	2.23	0.49	1.87	4.74						
135	5.35	3.84	1.45	0.55	2.03	4.38	5.37	4.31	1.90	0.48	1.54	3.60						
140	4.53	2.74	1.24	0.55	1.73	3.69	4.55	3.63	1.61	0.47	1.29	2.95						
145	3.72	1.93	1.10	0.55	1.46	2.96	3.72	2.92	1.34	0.47	1.08	2.25						
150	2.94	1.69	0.93	0.55	1.19	2.37	2.88	2.34	1.08	0.47	0.87	1.64						
155	2.17	1.33	0.78	0.55	0.98	1.86	2.24	1.86	0.90	0.48	0.72	1.35						
160	1.69	0.97	0.70	0.55	0.84	1.40	1.67	1.39	0.77	0.49	0.64	1.04						
165	1.11	0.71	0.63	0.55	0.71	0.99	1.16	1.00	0.67	0.50	0.59	0.74						
170	0.65	0.61	0.61	0.55	0.66	0.74	0.67	0.75	0.63	0.51	0.57	0.64						
175	0.58	0.58	0.58	0.55	0.64	0.65	0.60	0.67	0.62	0.53	0.55	0.59						
180	0.56	0.56	0.56	0.55	0.56	0.56	0.56	0.57	0.56	0.54	0.55	0.56						

C Range: 0 - 360DEG
C Interval: 30.0DEG
Test Speed: HIGH
Temperature:25.3℃
Operators:
Test Date:2025-03-15

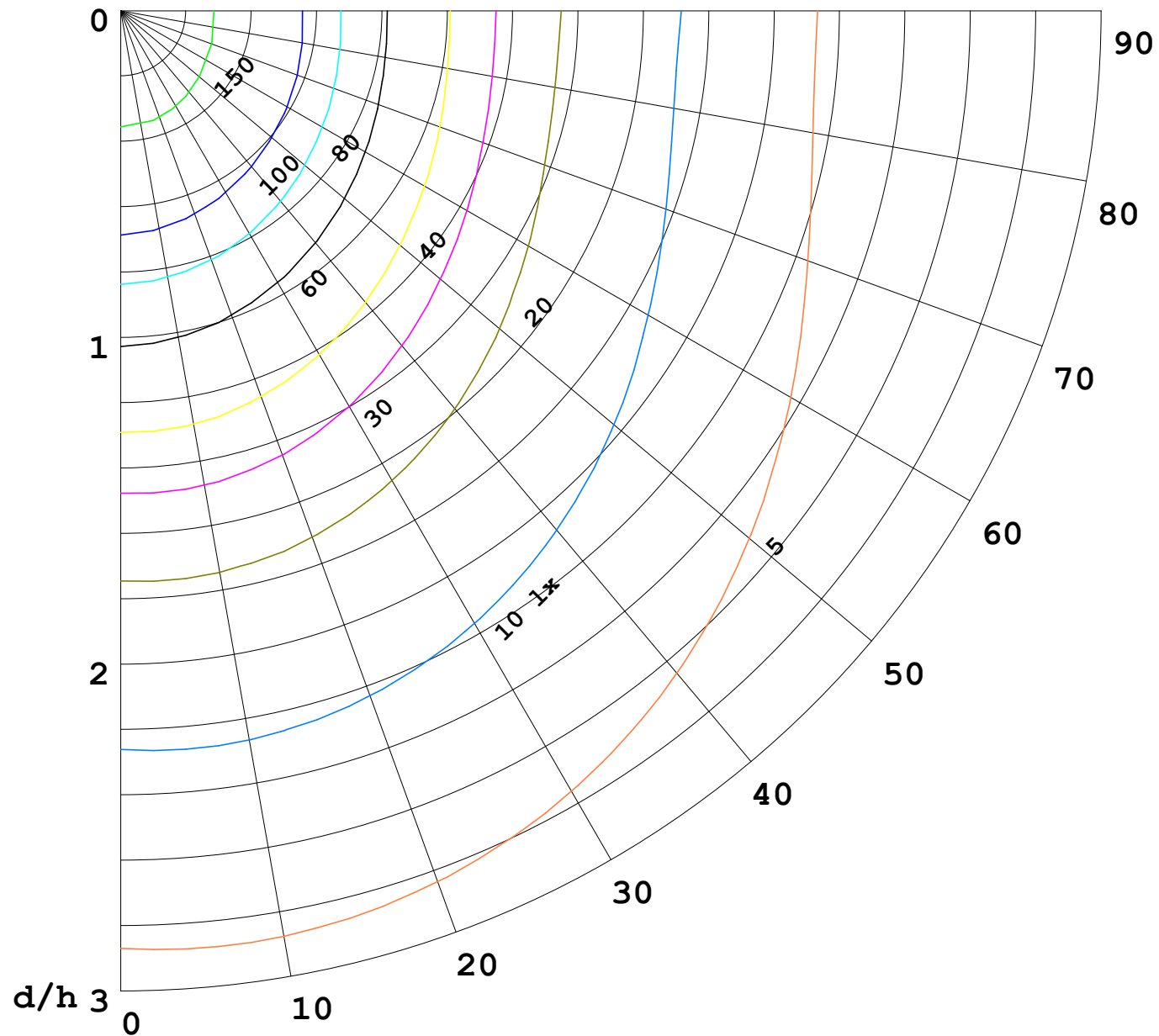
γ Range: 0 - 180DEG
γ Interval: 1.0DEG
Test System:EVERFINE GO-2000B_V1 SYSTEM V2.00.488
Humidity:65.0%
Test Distance:6.360m [K=1.0000]
Remarks:

I (cd)



1000 lm

$\kappa = 1$



F = 1000 lm
 K = 0.7
 Hcc = 0.8 m
 Hfc = 0.0 m
 Eave = 100 lx

	Pcc	Pw	Pfc
————	70	50	30
————	50	30	20

