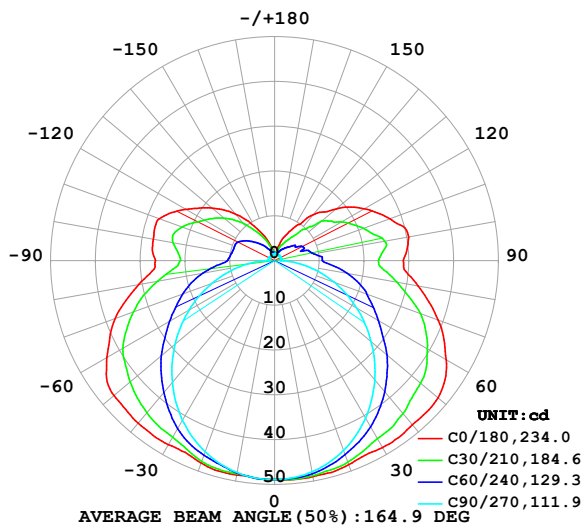


## LUMINAIRE PHOTOMETRIC TEST REPORT

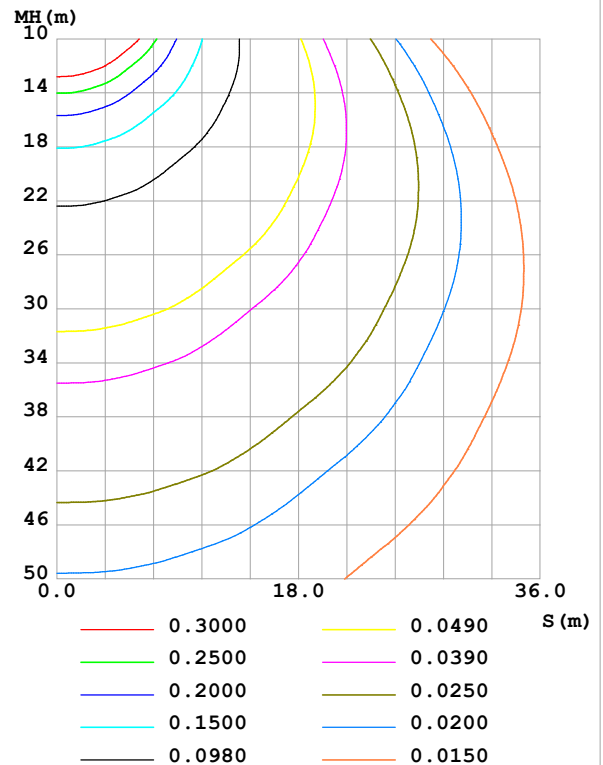
Test:U:24.00V I:0.4766A P:11.44W PF:1.000 Freq:0Hz Lamp Flux:275.415x1 lm		
NAME: SF18-24V-5050-70-SPI-RGBW(2700K)-G	TYPE:	WEIGHT:
SPEC.:	DIM.: Length=1m	SERIAL No.:
MFR.: Olymبيا lighting	SUR.:	Shielding Angle:

DATA OF LAMP		PHOTOMETRIC DATA Eff: 24.08 lm/W			
MODEL	5050	I <sub>max</sub> (cd)	49.11	S/MH(C0/180)	1.49
NOMINAL POWER(W)		LOR(%)	100.0	S/MH(C90/270)	1.25
RATED VOLTAGE(V)	24	TOTAL FLUX(lm)	275.41	η UP,DN(C0-180)	13.0,37.0
NOMINAL FLUX(lm)	275.415	CIE CLASS	SEMI-D.	η UP,DN(C180-360)	12.9,37.2
LAMPS INSIDE	1	η up (%)	25.9	CIBSE SHR NOM	1.50
TEST VOLTAGE(V)		η down (%)	74.1	CIBSE SHR MAX	1.55

LUMINOUS INTENSITY DISTRIBUTION DIAGRAM



C0 PLANE ISOLUX DIAGRAM (UNIT:lx)



C Range: 0 - 360DEG  
C Interval: 30.0DEG  
Test Speed: HIGH  
Temperature:25.3℃  
Operators:  
Test Date:2025-03-17

γ Range: 0 - 180DEG  
γ Interval: 1.0DEG  
Test System:EVERFINE GO-2000B\_V1 SYSTEM V2.00.488  
Humidity:65.0%  
Test Distance:6.360m [K=1.0000]  
Remarks:

## ZONAL FLUX DIAGRAM

## ZONAL FLUX DIAGRAM:

$\gamma$	C0	C45	C90	C135	C180	C225	C270	C315	$\gamma$	$\Phi$ zone	$\Phi$ total	%lum, lamp
10	48.98	48.58	47.90	48.17	48.61	48.26	48.08	48.72	0- 10	4.647	4.647	1.69,1.69
20	48.48	46.98	45.09	46.80	48.08	46.98	45.42	47.27	10- 20	13.52	18.17	6.6,6.6
30	48.20	44.40	40.63	44.12	47.44	44.45	41.16	44.85	20- 30	21.11	39.27	14.3,14.3
40	47.88	41.43	34.80	41.03	47.42	41.42	35.55	42.01	30- 40	27.00	66.27	24.1,24.1
50	47.67	37.66	28.16	37.18	46.86	37.57	29.01	38.28	40- 50	30.66	96.93	35.2,35.2
60	44.22	33.11	21.19	32.66	43.28	33.10	22.05	33.78	50- 60	31.78	128.7	46.7,46.7
70	38.85	28.34	14.14	27.38	37.90	27.69	14.90	28.93	60- 70	30.05	158.8	57.6,57.6
80	32.56	22.09	7.282	21.21	30.78	21.42	7.892	22.56	70- 80	25.78	184.5	67,67
90	28.72	16.94	1.316	16.05	26.63	15.80	1.432	17.00	80- 90	19.63	204.2	74.1,74.1
100	30.40	16.96	1.408	16.74	27.53	16.41	1.385	17.04	90-100	17.60	221.8	80.5,80.5
110	27.38	13.66	1.458	16.09	27.39	15.79	1.472	14.78	100-110	16.66	238.4	86.6,86.6
120	23.16	11.86	1.492	13.66	22.93	13.41	1.469	12.36	110-120	13.75	252.2	91.6,91.6
130	17.94	9.475	1.530	10.97	18.31	10.73	1.411	9.965	120-130	10.23	262.4	95.3,95.3
140	13.39	5.879	1.544	8.032	13.60	7.826	1.339	6.264	130-140	6.679	269.1	97.7,97.7
150	8.358	3.799	1.565	5.223	8.636	5.067	1.336	3.807	140-150	3.698	272.8	99,99
160	5.124	2.443	1.573	3.286	4.973	3.168	1.426	2.454	150-160	1.776	274.6	99.7,99.7
170	1.830	1.767	1.582	2.065	1.978	2.035	1.521	1.753	160-170	0.6793	275.2	99.9,99.9
180	1.614	1.617	1.605	1.617	1.617	1.627	1.591	1.617	170-180	0.1685	275.4	100,100
DEG	LUMINOUS INTENSITY:cd									UNIT:lm		

Conical surface Flux(90deg): 81.289 lm

%lum = 29.5%

%lamp = 29.5%

Conical surface Flux(130deg): 144.11 lm

%lum = 52.3%

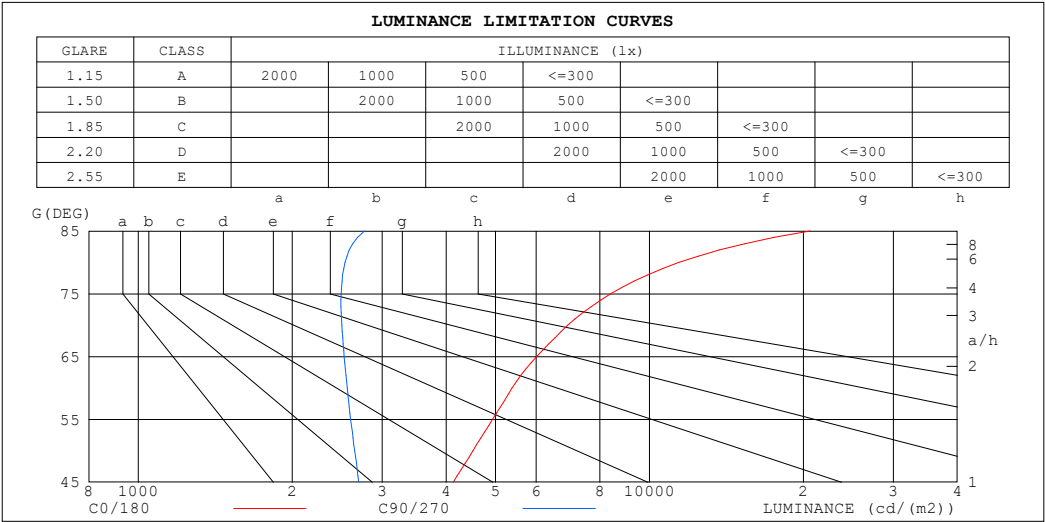
%lamp = 52.3%

C Range: 0 - 360DEG  
 C Interval: 30.0DEG  
 Test Speed: HIGH  
 Temperature:25.3℃  
 Operators:  
 Test Date:2025-03-17

$\gamma$  Range: 0 - 180DEG  
 $\gamma$  Interval: 1.0DEG  
 Test System:EVERFINE GO-2000B\_V1 SYSTEM V2.00.488  
 Humidity:65.0%  
 Test Distance:6.360m [K=1.0000]  
 Remarks:

LUMINANCE LIMITATION CURVES

Test:U:24.00V I:0.4766A P:11.44W PF:1.000 Freq:0Hz Lamp Flux:275.415x1 lm		
NAME: SF18-24V-5050-70-SPI-RGBW(2700K)-G	TYPE:	WEIGHT:
SPEC.:	DIM.: Length=1m	SERIAL No.:
MFR.: OLYMPIA lighting	SUR.:	Shielding Angle:



LUMINANCE cd/(m2)		
G (DEG)	C0/180	C90/270
85	20613	2771
80	11421	2536
75	8397	2495
70	6919	2501
65	6017	2528
60	5386	2563
55	4935	2602
50	4517	2649
45	4129	2698

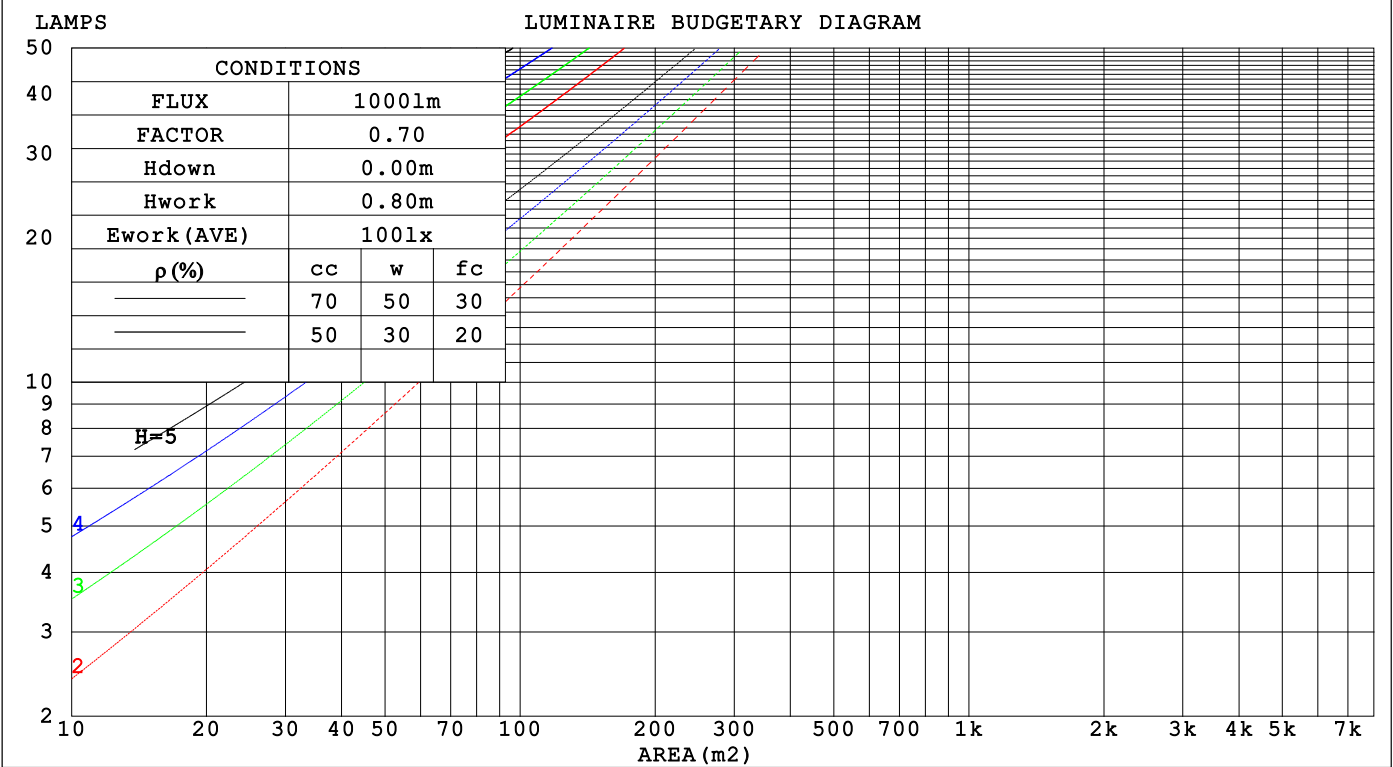
C Range: 0 - 360DEG  
C Interval: 30.0DEG  
Test Speed: HIGH  
Temperature:25.3℃  
Operators:  
Test Date:2025-03-17

γ Range: 0 - 180DEG  
γ Interval: 1.0DEG  
Test System:EVERFINE GO-2000B\_V1 SYSTEM V2.00.488  
Humidity:65.0%  
Test Distance:6.360m [K=1.0000]  
Remarks:

CU AND LUMINAIRE BUDGETARY ESTIMATE DIAGRAM

Test:U:24.00V I:0.4766A P:11.44W PF:1.000 Freq:0Hz Lamp Flux:275.415x1 lm		
NAME: SF18-24V-5050-70-SPI-RGBW(2700K)-G	TYPE:	WEIGHT:
SPEC.:	DIM.: Length=1m	SERIAL No.:
MFR.: OLYMPIA lighting	SUR.:	Shielding Angle:

pcc	80%			70%			50%			30%			10%			0
pw	50%	30%	10%	50%	30%	10%	50%	30%	10%	50%	30%	10%	50%	30%	10%	0
pfc	20%			20%			20%			20%			20%			0
RCR	RCR:Room Cavity Ratio															



C Range: 0 - 360DEG  
C Interval: 30.0DEG  
Test Speed: HIGH  
Temperature:25.3℃  
Operators:  
Test Date:2025-03-17

γ Range: 0 - 180DEG  
γ Interval: 1.0DEG  
Test System:EVERFINE GO-2000B\_V1 SYSTEM V2.00.488  
Humidity:65.0%  
Test Distance:6.360m [K=1.0000]  
Remarks:

## WEC AND CCEC

Test:U:24.00V I:0.4766A P:11.44W PF:1.000 Freq:0Hz Lamp Flux:275.415x1 lm		
NAME: SF18-24V-5050-70-SPI-RGBW(2700K)-G	TYPE:	WEIGHT:
SPEC.:	DIM.: Length=1m	SERIAL No.:
MFR.: OLympia lighting	SUR.:	Shielding Angle:

pcc	80%			70%			50%			30%			10%			0	
pw	50%	30%	10%	50%	30%	10%	50%	30%	10%	50%	30%	10%	50%	30%	10%	0	
pfc	20%			20%			20%			20%			20%			0	
RCR	RCR:Room Cavity Ratio						Wall Exitance Coefficients(WEC)										
0.0																	
1.0	.383	.218	.069	.368	.210	.067	.340	.195	.062	.314	.181	.058	.290	.168	.054		
2.0	.332	.182	.056	.318	.175	.054	.293	.163	.051	.269	.151	.047	.247	.140	.044		
3.0	.295	.157	.047	.282	.151	.046	.259	.140	.043	.237	.130	.040	.217	.120	.037		
4.0	.265	.138	.041	.254	.133	.039	.233	.123	.037	.213	.114	.034	.195	.106	.032		
5.0	.241	.123	.036	.231	.118	.034	.211	.110	.032	.193	.102	.030	.176	.094	.028		
6.0	.221	.111	.032	.211	.107	.031	.194	.099	.029	.177	.092	.027	.161	.085	.025		
7.0	.203	.101	.029	.195	.097	.028	.179	.090	.026	.163	.084	.024	.149	.077	.023		
8.0	.189	.092	.026	.181	.089	.025	.166	.083	.024	.152	.077	.022	.138	.071	.021		
9.0	.176	.085	.024	.168	.082	.023	.154	.076	.022	.141	.071	.020	.129	.066	.019		
10.0	.164	.079	.022	.158	.076	.021	.145	.071	.020	.132	.066	.019	.121	.061	.017		

pcc	80%			70%			50%			30%			10%			0
pw	50%	30%	10%	50%	30%	10%	50%	30%	10%	50%	30%	10%	50%	30%	10%	0
pfc	20%			20%			20%			20%			20%			0
RCR	RCR:Room Cavity Ratio						Ceiling Cavity Exitance Coefficients (CCEC)									
0.0	.388	.388	.388	.331	.331	.331	.226	.226	.226	.130	.130	.130	.042	.042	.042	
1.0	.384	.354	.327	.329	.304	.282	.225	.209	.195	.129	.121	.113	.041	.039	.037	
2.0	.378	.332	.293	.323	.286	.253	.222	.198	.177	.128	.115	.104	.041	.037	.034	
3.0	.370	.316	.272	.318	.272	.236	.218	.189	.165	.126	.110	.097	.040	.036	.032	
4.0	.363	.303	.258	.311	.262	.224	.214	.183	.158	.124	.107	.093	.040	.035	.031	
5.0	.355	.294	.248	.305	.254	.216	.210	.178	.153	.122	.104	.090	.039	.034	.030	
6.0	.348	.286	.241	.299	.248	.210	.206	.173	.149	.120	.102	.088	.039	.033	.029	
7.0	.341	.279	.236	.293	.242	.206	.203	.170	.146	.118	.100	.087	.038	.033	.029	
8.0	.334	.274	.233	.288	.238	.203	.199	.167	.144	.116	.098	.086	.037	.032	.028	
9.0	.328	.269	.230	.283	.234	.200	.196	.164	.142	.114	.097	.085	.037	.032	.028	
10.0	.322	.265	.227	.278	.230	.198	.193	.162	.141	.112	.096	.084	.036	.031	.028	

C Range: 0 - 360DEG  
C Interval: 30.0DEG  
Test Speed: HIGH  
Temperature:25.3℃  
Operators:  
Test Date:2025-03-17

γ Range: 0 - 180DEG  
γ Interval: 1.0DEG  
Test System:EVERFINE GO-2000B\_V1 SYSTEM V2.00.488  
Humidity:65.0%  
Test Distance:6.360m [K=1.0000]  
Remarks:

UGR(Unified Glare Rating) Table

Test:U:24.00V I:0.4766A P:11.44W PF:1.000 Freq:0Hz Lamp Flux:275.415x1 lm										
NAME: SF18-24V-5050-70-SPI-RGBW(2700K)-G					TYPE:			WEIGHT:		
SPEC.:					DIM.: Length=1m			SERIAL No.:		
MFR.: OLympia lighting					SUR.:			Shielding Angle:		
ceiling/cavity	0.7	0.7	0.5	0.5	0.3	0.7	0.7	0.5	0.5	0.3
walls	0.5	0.3	0.5	0.3	0.3	0.5	0.3	0.5	0.3	0.3
working plane	0.2	0.2	0.2	0.2	0.2	0.2	0.2	0.2	0.2	0.2
Room dimensions	Viewed crosswise					Viewed endwise				
x = 2H y = 2H	21.8	23.1	22.4	23.7	24.4	18.6	19.9	19.2	20.6	21.3
3H	24.6	25.8	25.2	26.4	27.2	20.4	21.5	21.0	22.2	22.9
4H	26.1	27.2	26.7	27.9	28.6	21.1	22.3	21.8	22.9	23.7
6H	27.7	28.7	28.4	29.4	30.2	21.8	22.8	22.4	23.5	24.3
8H	28.6	29.6	29.3	30.3	31.1	22.0	23.0	22.7	23.7	24.5
12H	29.6	30.6	30.3	31.3	32.1	22.2	23.2	22.9	23.9	24.7
4H 2H	22.3	23.4	22.9	24.1	24.8	20.0	21.2	20.7	21.8	22.6
3H	25.4	26.3	26.0	27.0	27.9	22.0	22.9	22.7	23.6	24.5
4H	27.0	27.9	27.7	28.6	29.5	22.9	23.8	23.6	24.5	25.4
6H	28.8	29.6	29.6	30.4	31.3	23.7	24.5	24.5	25.3	26.2
8H	29.8	30.6	30.6	31.3	32.3	24.1	24.8	24.8	25.6	26.5
12H	31.0	31.7	31.8	32.5	33.4	24.3	25.0	25.1	25.8	26.7
8H 4H	27.3	28.1	28.1	28.8	29.7	24.1	24.8	24.8	25.6	26.5
6H	29.4	30.1	30.2	30.8	31.8	25.3	25.9	26.0	26.7	27.6
8H	30.6	31.2	31.4	32.0	33.0	25.8	26.4	26.6	27.2	28.1
12H	32.1	32.5	32.9	33.4	34.3	26.3	26.8	27.1	27.6	28.6
12H 4H	27.3	28.0	28.1	28.8	29.7	24.5	25.2	25.2	25.9	26.9
6H	29.5	30.1	30.3	30.9	31.9	25.9	26.4	26.6	27.2	28.2
8H	30.9	31.3	31.7	32.2	33.1	26.5	27.0	27.4	27.9	28.8
Variations with the observer position at spacings(CIE Pub.117):										
S = 1.0H	+ 0.1 / - 0.1					+ 0.1 / - 0.1				
1.5H	+ 0.2 / - 0.2					+ 0.2 / - 0.3				
2.0H	+ 0.2 / - 0.3					+ 0.2 / - 0.4				

CIE Pub.117, 275.4 lm Total Lamp Luminous Flux Correct (8log(F/F0) = -4.5)  
Area: 0.0165 m2

C Range: 0 - 360DEG  
C Interval: 30.0DEG  
Test Speed: HIGH  
Temperature:25.3℃  
Operators:  
Test Date:2025-03-17

γ Range: 0 - 180DEG  
γ Interval: 1.0DEG  
Test System:EVERFINE GO-2000B\_V1 SYSTEM V2.00.488  
Humidity:65.0%  
Test Distance:6.360m [K=1.0000]  
Remarks:

## UTILIZATION FACTORS TABLE

Test:U:24.00V I:0.4766A P:11.44W PF:1.000 Freq:0Hz Lamp Flux:275.415x1 lm		
NAME: SF18-24V-5050-70-SPI-RGBW(2700K)-G	TYPE:	WEIGHT:
SPEC.:	DIM.: Length=1m	SERIAL No.:
MFR.: OLympia lighting	SUR.:	Shielding Angle:

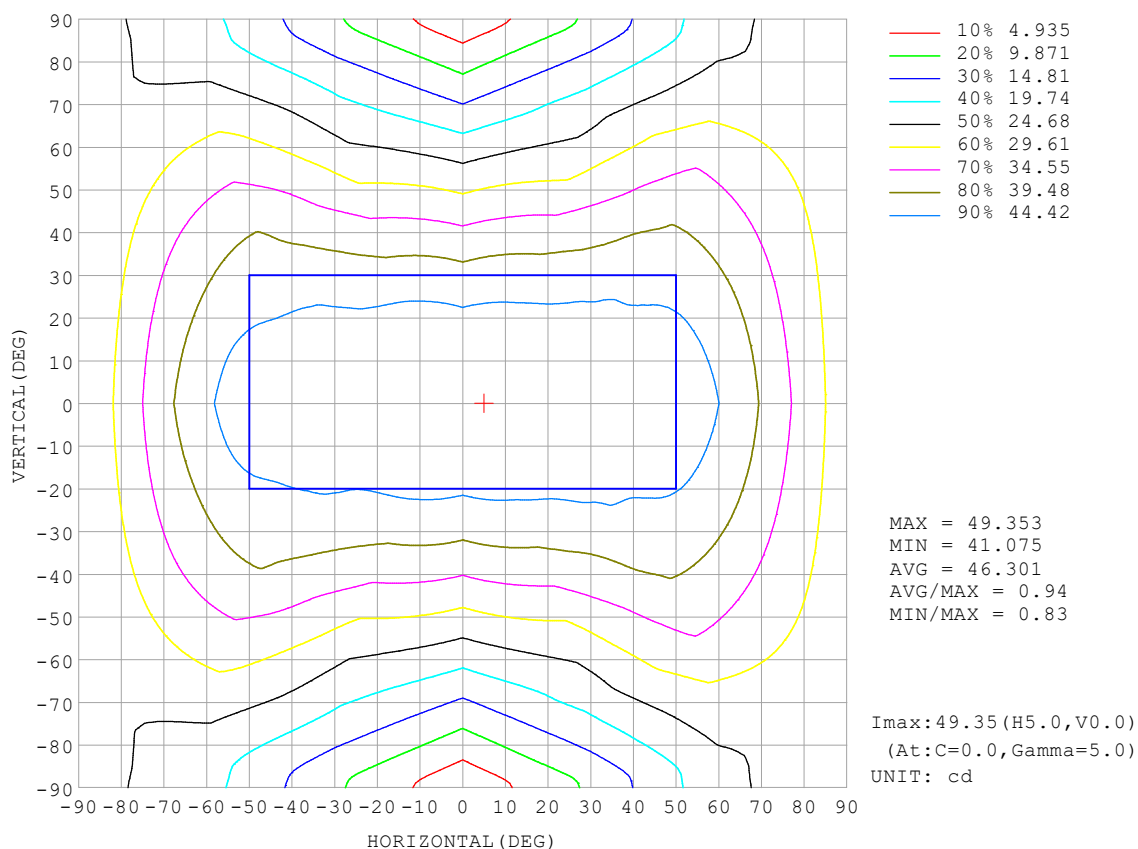
REFLECTANCE										
Ceiling	0.8	0.8	0.8	0.7	0.7	0.7	0.5	0.5	0.5	0
Walls	0.7	0.5	0.3	0.7	0.5	0.3	0.7	0.5	0.3	0
Working plane	0.2	0.2	0.2	0.2	0.2	0.2	0.2	0.2	0.2	0
ROOM INDEX	UTILIZATION FACTORS (PERCENT) $k(RI) \times RCR = 5$									
$k = 0.60$	45	32	25	43	32	25	41	31	24	17
0.80	54	41	33	52	40	32	49	38	31	23
1.00	62	48	40	59	47	39	55	47	37	28
1.25	68	56	47	66	54	46	61	51	44	33
1.50	74	61	52	71	59	51	65	55	48	37
2.00	81	70	61	78	67	59	71	62	56	43
2.50	86	75	67	82	72	65	74	67	61	46
3.00	90	80	72	85	77	70	78	71	65	50
4.00	95	86	80	90	83	76	81	76	71	54
5.00	98	90	84	93	86	81	84	79	75	57
ROOM INDEX	UF (total)									Direct
According to DIN EN 13032-2 2004			Suspended					SHRNOM = 1.25		

C Range: 0 - 360DEG  
 C Interval: 30.0DEG  
 Test Speed: HIGH  
 Temperature: 25.3 °C  
 Operators:  
 Test Date: 2025-03-17

γ Range: 0 - 180DEG  
 γ Interval: 1.0DEG  
 Test System: EVERFINE GO-2000B\_V1 SYSTEM V2.00.488  
 Humidity: 65.0%  
 Test Distance: 6.360m [K=1.0000]  
 Remarks:

## ISOCANDELA DIAGRAM

Test:U:24.00V I:0.4766A P:11.44W PF:1.000 Freq:0Hz Lamp Flux:275.415x1 lm		
NAME: SF18-24V-5050-70-SPI-RGBW(2700K)-G	TYPE:	WEIGHT:
SPEC.:	DIM.: Length=1m	SERIAL No.:
MFR.: OLympia lighting	SUR.:	Shielding Angle:



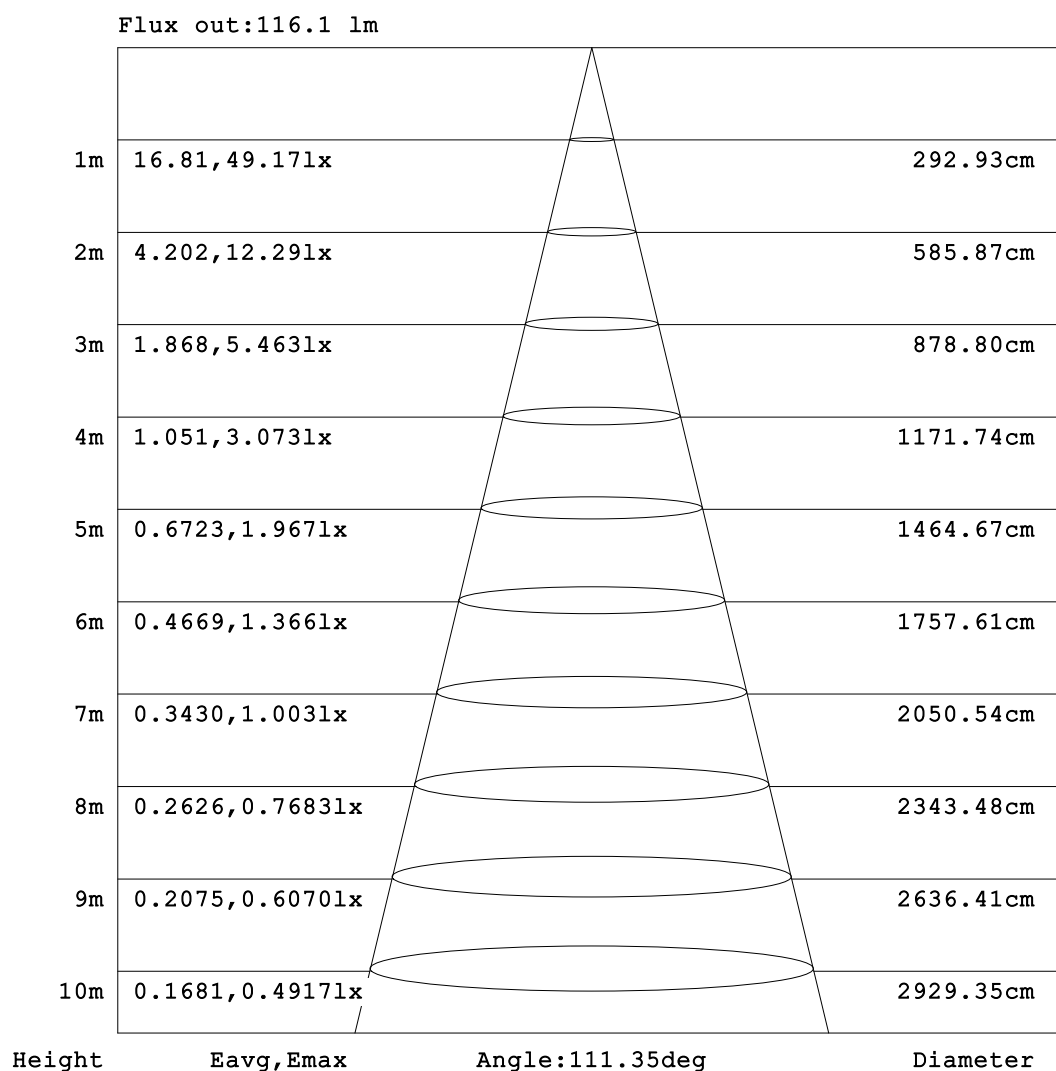
C Range: 0 - 360DEG  
C Interval: 30.0DEG  
Test Speed: HIGH  
Temperature:25.3℃  
Operators:  
Test Date:2025-03-17

γ Range: 0 - 180DEG  
γ Interval: 1.0DEG  
Test System:EVERFINE GO-2000B\_V1 SYSTEM V2.00.488  
Humidity:65.0%  
Test Distance:6.360m [K=1.0000]  
Remarks:



## AAI Figure

Test:U:24.00V I:0.4766A P:11.44W PF:1.000 Freq:0Hz Lamp Flux:275.415x1 lm		
NAME: SF18-24V-5050-70-SPI-RGBW(2700K)-G	TYPE:	WEIGHT:
SPEC.:	DIM.: Length=1m	SERIAL No.:
MFR.: OLympia lighting	SUR.:	Shielding Angle:



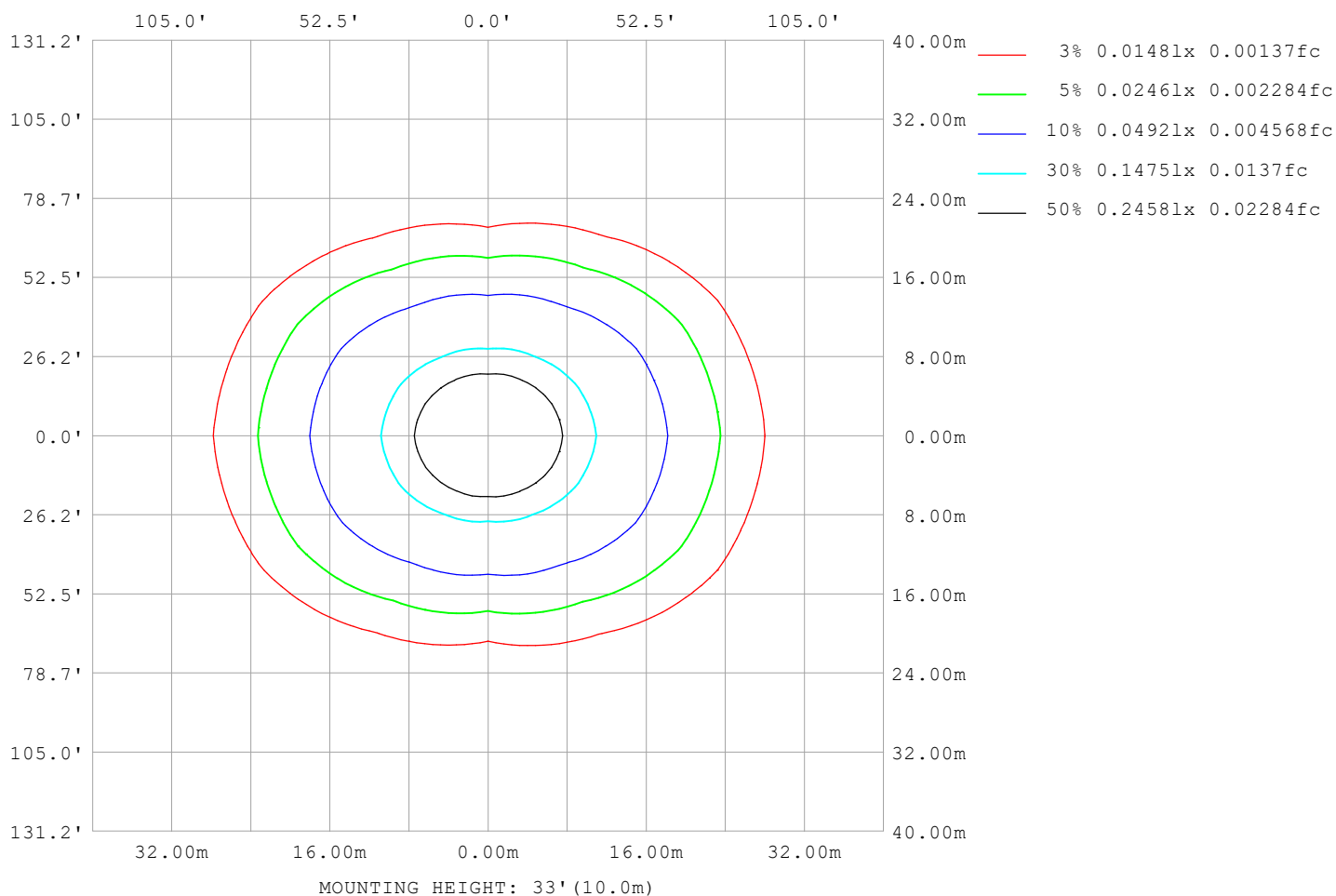
Note:The Curves indicate the illuminated area and the average illumination when the luminaire is at different distance.

C Range: 0 - 360DEG  
C Interval: 30.0DEG  
Test Speed: HIGH  
Temperature:25.3℃  
Operators:  
Test Date:2025-03-17

γ Range: 0 - 180DEG  
γ Interval: 1.0DEG  
Test System:EVERFINE GO-2000B\_V1 SYSTEM V2.00.488  
Humidity:65.0%  
Test Distance:6.360m [K=1.0000]  
Remarks:

## ISOLUX DIAGRAM

Test:U:24.00V I:0.4766A P:11.44W PF:1.000 Freq:0Hz Lamp Flux:275.415x1 lm		
NAME: SF18-24V-5050-70-SPI-RGBW(2700K)-G	TYPE:	WEIGHT:
SPEC.:	DIM.: Length=1m	SERIAL No.:
MFR.: OLympia lighting	SUR.:	Shielding Angle:



C Range: 0 - 360DEG  
C Interval: 30.0DEG  
Test Speed: HIGH  
Temperature:25.3℃  
Operators:  
Test Date:2025-03-17

γ Range: 0 - 180DEG  
γ Interval: 1.0DEG  
Test System:EVERFINE GO-2000B\_V1 SYSTEM V2.00.488  
Humidity:65.0%  
Test Distance:6.360m [K=1.0000]  
Remarks:

## LED Avg.L Report

Test:U:24.00V I:0.4766A P:11.44W PF:1.000 Freq:0Hz Lamp Flux:275.415x1 lm		
NAME: SF18-24V-5050-70-SPI-RGBW(2700K)-G	TYPE:	WEIGHT:
SPEC.:	DIM.: Length=1m	SERIAL No.:
MFR.: OLympia lighting	SUR.:	Shielding Angle:

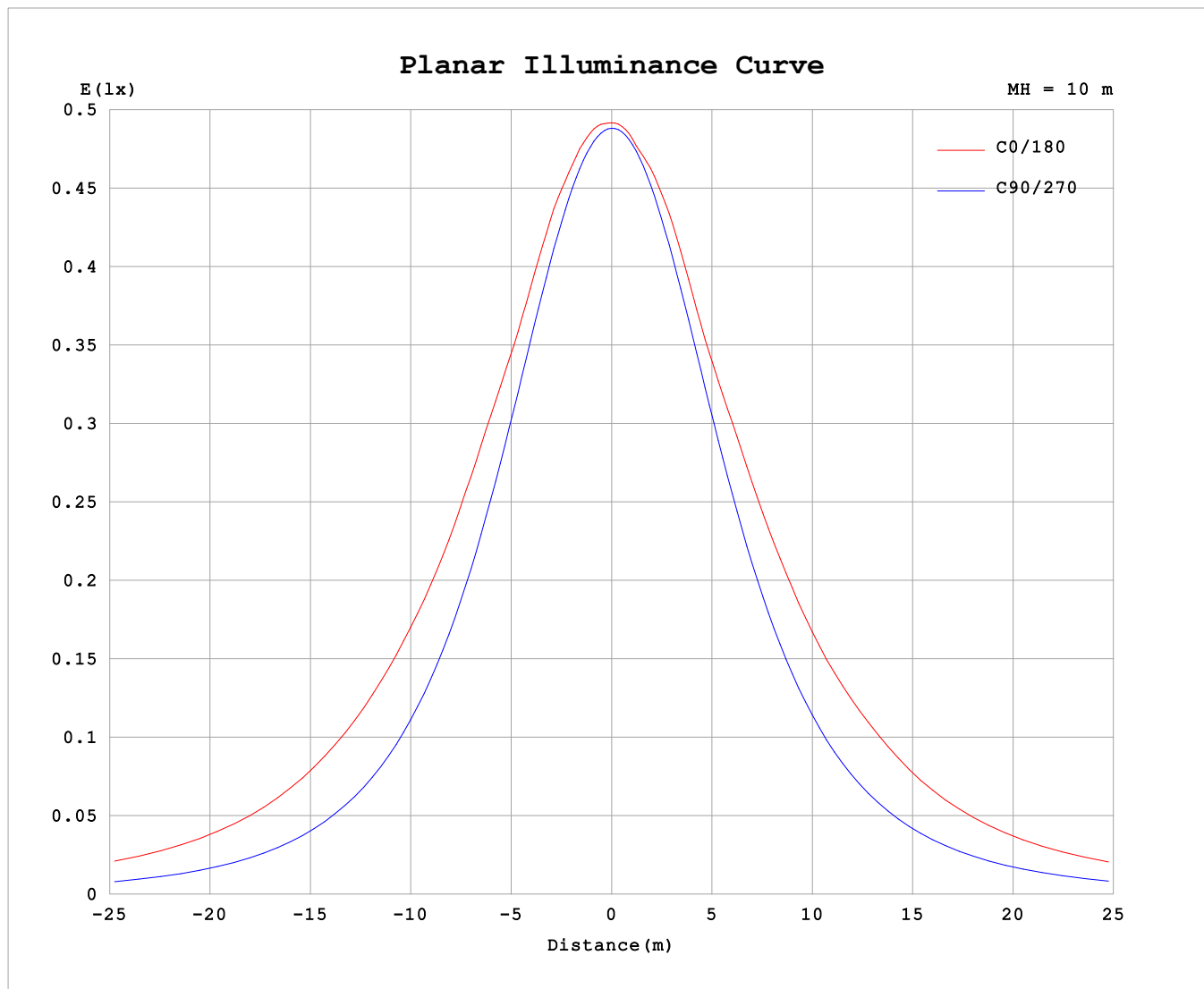
AvgL	cd/m2
L_0~180 (65) av	5905
L_0~180 (75) av	8201
L_0~180 (85) av	19806
L_90~270 (65) av	2591
L_90~270 (75) av	2580
L_90~270 (85) av	2949
L_45 (65) av	4412
L_45 (75) av	5939
L_45 (85) av	13018

Standard: GB/T 29293-2012

C Range: 0 - 360DEG  
C Interval: 30.0DEG  
Test Speed: HIGH  
Temperature:25.3℃  
Operators:  
Test Date:2025-03-17

γ Range: 0 - 180DEG  
γ Interval: 1.0DEG  
Test System:EVERFINE GO-2000B\_V1 SYSTEM V2.00.488  
Humidity:65.0%  
Test Distance:6.360m [K=1.0000]  
Remarks:

## Planar Illuminance Curve



C Range: 0 - 360DEG  
C Interval: 30.0DEG  
Test Speed: HIGH  
Temperature: 25.3°C  
Operators:  
Test Date: 2025-03-17

$\gamma$  Range: 0 - 180DEG  
 $\gamma$  Interval: 1.0DEG  
Test System: EVERFINE GO-2000B\_V1 SYSTEM V2.00.488  
Humidity: 65.0%  
Test Distance: 6.360m [K=1.0000]  
Remarks:

## LUMINOUS DISTRIBUTION INTENSITY DATA

Test:U:24.00V I:0.4766A P:11.44W PF:1.000 Freq:0Hz Lamp Flux:275.415x1 lm											
NAME: SF18-24V-5050-70-SPI-RGBW(2700K)-G						TYPE:			WEIGHT:		
SPEC.:						DIM.: Length=1m			SERIAL No.:		
MFR.: OLympia lighting						SUR.:			Shielding Angle:		

Table--1

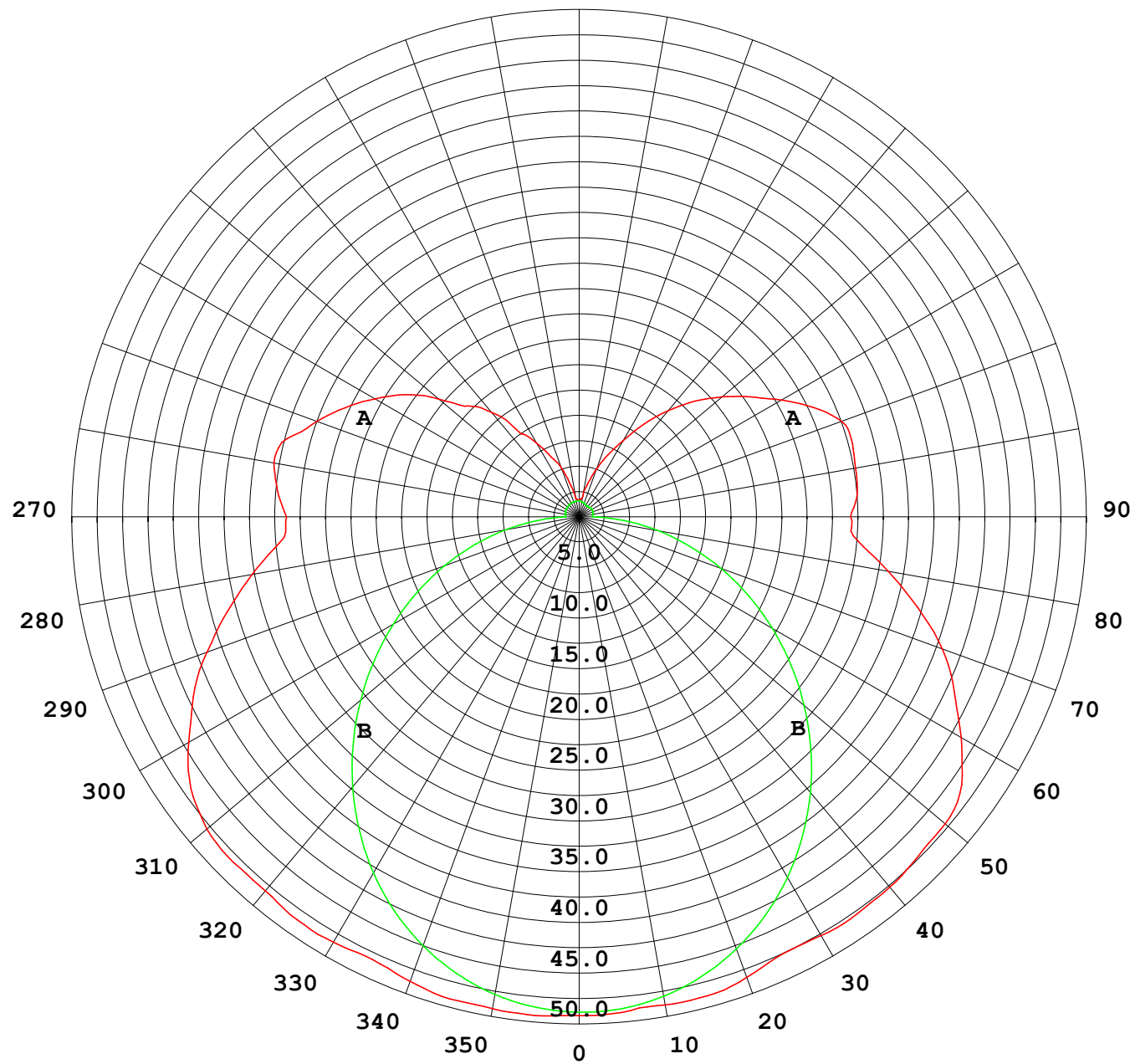
UNIT: cd

C (DEG) γ (DEG)	0	30	60	90	120	150	180	210	240	270	300	330							
0	48.9	48.9	48.9	48.9	48.9	48.9	48.9	48.9	48.9	48.9	48.9	48.9							
5	49.1	49.0	48.8	48.6	48.7	48.7	48.8	48.8	48.8	48.8	48.8	49.1							
10	49.0	48.8	48.4	47.9	48.0	48.3	48.6	48.3	48.2	48.1	48.5	48.9							
15	49.0	48.4	47.4	46.7	46.9	48.2	48.6	48.3	47.1	47.0	47.6	48.5							
20	48.5	47.9	46.1	45.1	46.0	47.6	48.1	47.7	46.2	45.4	46.4	48.1							
25	47.9	46.9	44.6	43.0	44.7	46.4	47.3	46.5	45.0	43.5	45.1	47.2							
30	48.2	45.9	42.9	40.6	42.8	45.4	47.4	45.6	43.3	41.2	43.4	46.3							
35	48.2	45.5	40.7	37.8	40.4	45.0	47.6	45.1	41.0	38.5	41.3	45.9							
40	47.9	44.6	38.3	34.8	37.9	44.2	47.4	44.4	38.5	35.6	39.0	45.0							
45	47.9	43.3	35.5	31.5	35.2	43.2	47.1	43.4	35.8	32.4	36.4	43.8							
50	47.7	42.5	32.7	28.2	32.4	42.0	46.9	42.1	33.0	29.0	33.6	43.0							
55	46.5	41.4	29.5	24.7	29.3	40.5	45.8	40.6	29.9	25.6	30.4	41.9							
60	44.2	39.4	26.8	21.2	26.5	38.8	43.3	39.1	27.1	22.0	27.6	39.9							
65	41.7	37.3	24.2	17.7	23.9	36.2	40.6	36.5	24.3	18.5	25.0	37.7							
70	38.9	34.7	22.0	14.1	21.4	33.3	37.9	33.5	21.8	14.9	22.8	35.1							
75	35.7	31.0	19.5	10.7	18.9	30.2	34.4	30.3	19.2	11.4	20.2	31.5							
80	32.6	27.7	16.4	7.28	16.0	26.4	30.8	26.5	16.3	7.89	17.0	28.1							
85	29.5	24.6	13.1	3.99	12.8	22.9	27.5	22.8	13.0	4.49	13.7	24.8							
90	28.7	23.2	10.7	1.32	10.7	21.4	26.6	21.1	10.5	1.43	10.9	23.1							
95	29.7	24.3	10.7	1.37	10.3	22.2	27.4	21.7	10.1	1.34	10.8	24.2							
100	30.4	25.0	8.89	1.41	10.00	23.5	27.5	23.0	9.77	1.39	9.26	24.8							
105	29.7	22.9	8.12	1.43	9.82	23.7	27.8	23.3	9.58	1.45	8.53	23.5							
110	27.4	21.1	6.19	1.46	9.82	22.4	27.4	22.0	9.54	1.47	7.76	21.8							
115	25.3	19.2	7.12	1.48	9.64	20.3	25.4	20.0	9.41	1.47	7.60	19.7							
120	23.2	17.3	6.39	1.49	8.90	18.4	22.9	18.1	8.68	1.47	7.40	17.3							
125	20.9	15.5	5.73	1.51	7.99	16.8	20.5	16.5	7.78	1.47	6.21	15.6							
130	17.9	13.8	5.14	1.53	6.94	15.0	18.3	14.8	6.67	1.41	5.66	14.3							
135	15.4	10.3	4.32	1.53	5.96	13.1	16.0	12.9	5.68	1.37	4.67	11.0							
140	13.4	8.01	3.74	1.54	5.05	11.0	13.6	10.8	4.80	1.34	3.85	8.68							
145	9.91	6.19	3.19	1.56	4.24	8.81	11.1	8.70	3.97	1.33	3.21	6.78							
150	8.36	4.95	2.65	1.56	3.42	7.03	8.64	6.95	3.18	1.34	2.57	5.04							
155	6.47	3.91	2.22	1.57	2.83	5.54	6.70	5.49	2.66	1.39	2.12	4.23							
160	5.12	2.91	1.97	1.57	2.42	4.15	4.97	4.04	2.29	1.43	1.89	3.02							
165	3.21	2.12	1.80	1.57	2.06	2.95	3.44	2.92	1.97	1.47	1.71	2.14							
170	1.83	1.80	1.74	1.58	1.93	2.20	1.98	2.20	1.87	1.52	1.68	1.83							
175	1.67	1.69	1.68	1.60	1.86	1.92	1.75	1.93	1.82	1.56	1.64	1.71							
180	1.61	1.62	1.61	1.61	1.62	1.62	1.62	1.64	1.62	1.59	1.61	1.63							

C Range: 0 - 360DEG  
C Interval: 30.0DEG  
Test Speed: HIGH  
Temperature:25.3℃  
Operators:  
Test Date:2025-03-17

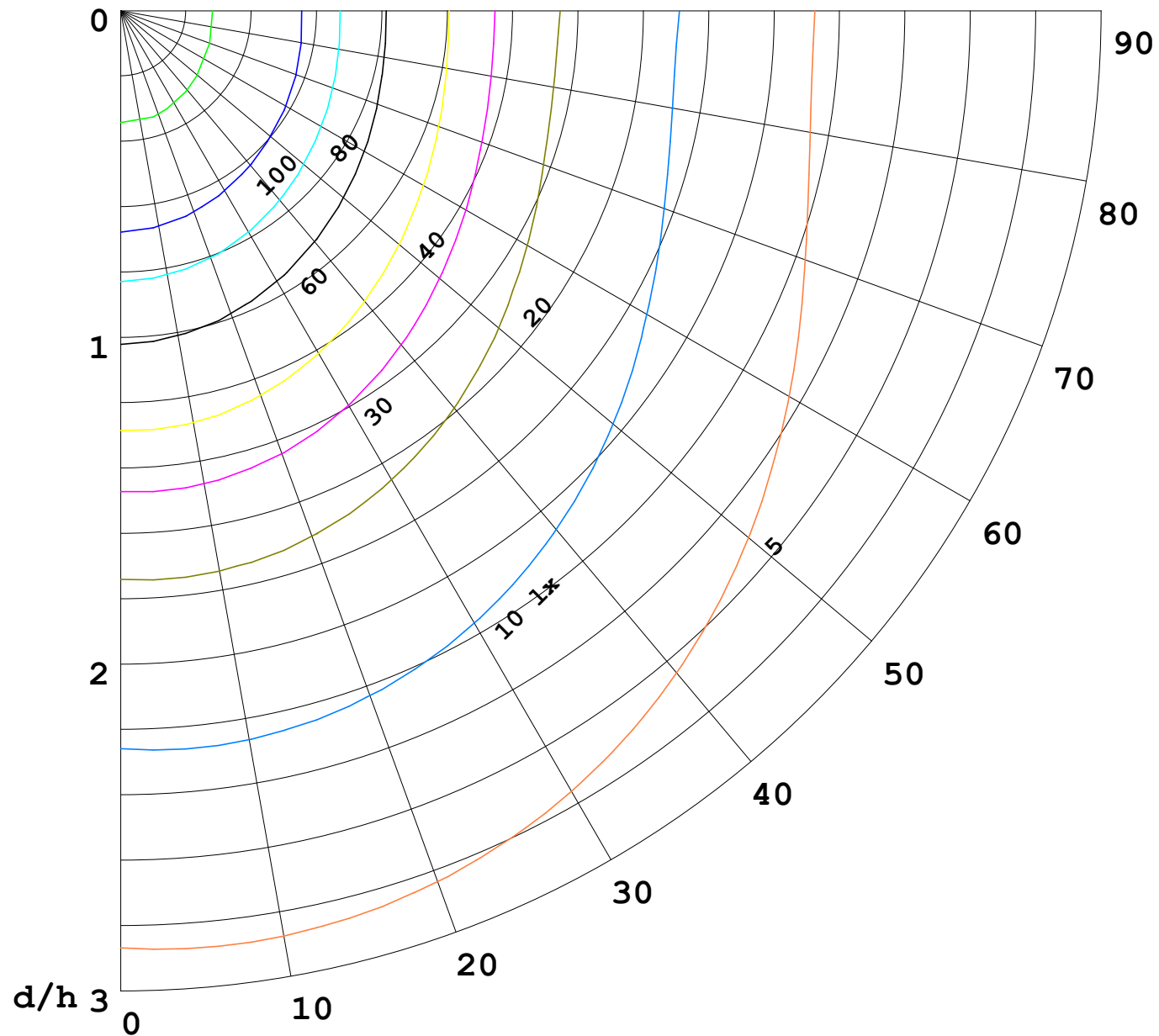
γ Range: 0 - 180DEG  
γ Interval: 1.0DEG  
Test System:EVERFINE GO-2000B\_V1 SYSTEM V2.00.488  
Humidity:65.0%  
Test Distance:6.360m [K=1.0000]  
Remarks:

I (cd)



1000 lm

$\kappa = 1$



F = 1000 lm  
 K = 0.7  
 Hcc = 0.8 m  
 Hfc = 0.0 m  
 Eave = 100 lx

	Pcc	Pw	Pfc
—————	70	50	30
—————	50	30	20

